

**TALBERT, BRIGHT & ELLINGTON, INC.**

**RE: HILTON HEAD ISLAND AIRPORT**

**“COMMERCIAL APRON EXPANSION”**

**TBI PROJECT # 2119-1906**

***THIS GEOTECH DATA IS BEING  
PROVIDED FOR INFORMATIONAL  
PURPOSES ONLY AND SHALL NOT  
BE CONSIDERED AS PART OF THE  
CONTRACT DOCUMENTS.***

**ENGINEERING & PLANNING CONSULTANTS**

2000 PARK STREET – SUITE 101

COLUMBIA, SC 29201

Phone: 803-933-9290 Fax: 803-933-9205

[www.talbertandbright.com](http://www.talbertandbright.com)

Charlotte, NC

Wilmington, NC

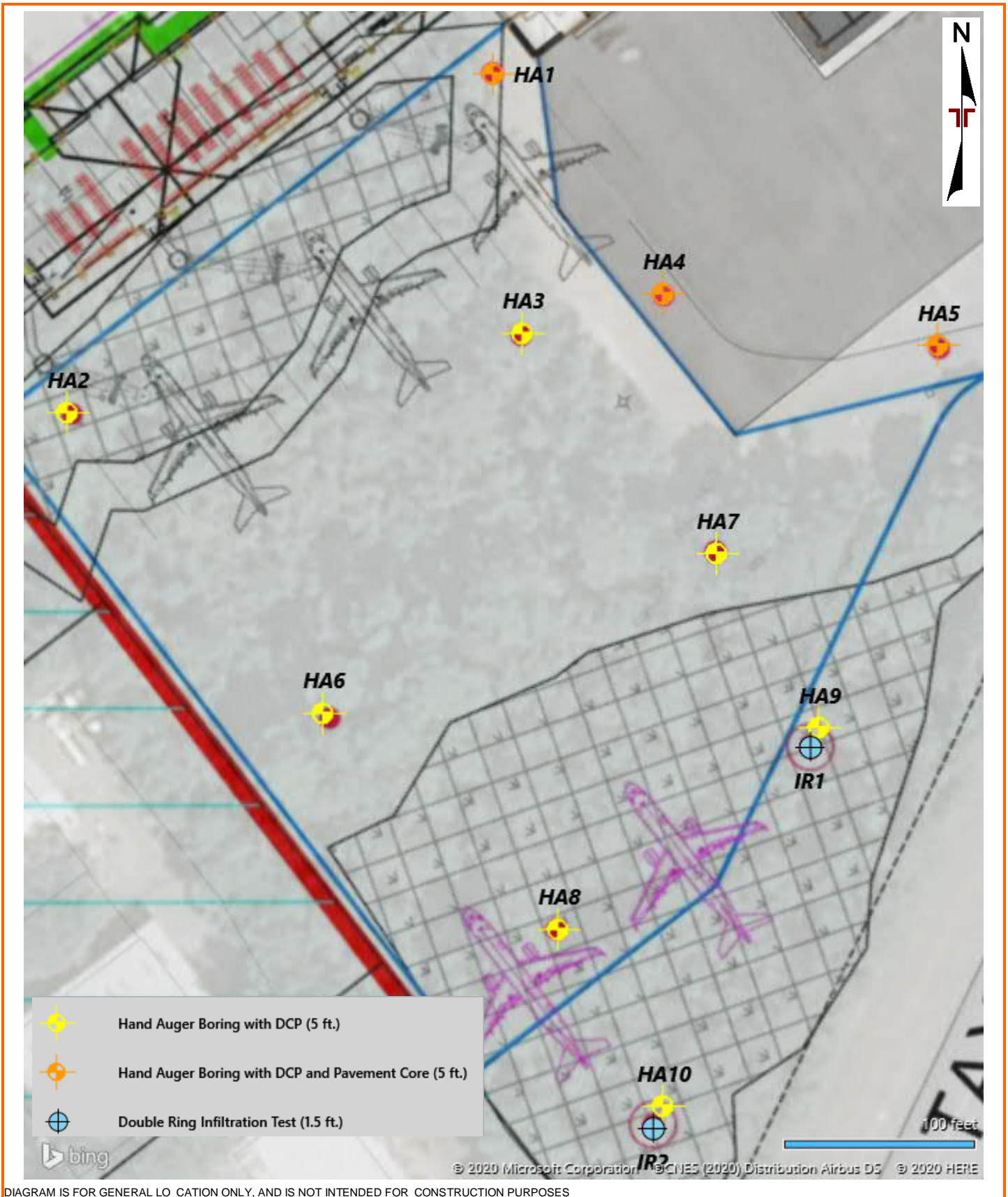
Chesterfield, VA

Columbia, SC

**EXHIBIT A-2 - EXPLORATION PLAN**

HHI Airport Terminal ■ Hilton Head Island, South Carolina

April 20, 2020 ■ Terracon Project No. HG205014



# Hand Auger Boring Log with DCP



Project Name: Hilton Head Airport Terminal Expansion

Project No.: HG205014

Project Location: Hilton Head Island, South Carolina

Location	Depth (in)	Material Description	USCS Classification	DCP Depth (ft)	DCP Blow Counts (Blows/1.75 inches)		
					1	2	3
HA1	0 to 5.5	Asphalt core	--	0.5	9	12	20
	5.5 to 15	Dark brown/dark gray, fine, loose silty sand	SM	1	8	12	10
	15 to 30	Gray, fine, loose sand	SP	2	8	12	15
	30 to 48	Gray/light gray, fine, loose sand	SP	3	5	9	11
	48 to 60	Dark brown, fine, loose silty sand w/organics	SM	4 5	11 9	14 10	10 12
Groundwater observed @ 60" BGS. No mottling observed.							

Location	Depth (in)	Material Description	USCS Classification	DCP Depth (ft)	DCP Blow Counts (Blows/1.75 inches)		
					1	2	3
HA2	0 to 38	Dark brown, fine, silty sand w/ organics	SM	0	4	5	6
				1	8	8	7
				2	8	9	10
				3	15	20	--
	38 to 50	Dark brown, fine, silty sand	SM	4	20	--	--
50 to 60	Gray/light gray, silty sand	SM	5	18	20	--	
Groundwater observed @ 48" BGS. No mottling observed.							

Location	Depth (in)	Material Description	USCS Classification	DCP Depth (ft)	DCP Blow Counts (Blows/1.75 inches)		
					1	2	3
HA3	0 to 12	Brown/gray, fine, loose silty sand	SM	0	6	4	4
				1	6	8	12
	12 to 48	Brown/light brown, fine, loose silty sand	SM	2	4	4	4
				3	10	11	16
	48 to 60	Brown, fine, loose silty sand	SM	4 5	16 20	20 --	-- --
Groundwater observed @ 60" BGS. No mottling observed.							

Location	Depth (in)	Material Description	USCS Classification	DCP Depth (ft)	DCP Blow Counts (Blows/1.75 inches)		
					1	2	3
HA4	0 to 7.25	Concrete core	--	1	6	20	--
	7.25 to 12	GAB	--	2	15	20	--
	12 to 24	Gray/light gray, fine, loose sand	SP	3	13	20	--
	24 to 48	Brown, fine, loose silty sand	SM	4	8	13	15
	48 to 60	Dark brown, fine, loose silty sand	SM	5 6	13 11	20 20	-- --
No groundwater observed. No mottling observed.							

Note: BGS = Below Ground Surface, GAB = Graded Aggregate Base

# Hand Auger Boring Log with DCP



Project Name: Hilton Head Airport Terminal Expansion

Project No.: HG205014

Project Location: Hilton Head Island, South Carolina

Location	Depth (in)	Material Description	USCS Classification	DCP Depth (ft)	DCP Blow Counts (Blows/1.75 inches)		
					1	2	3
HA5	0 to 4	Asphalt core	--	0	16	20	--
	4 to 10.5	Cement-treated base core	--	--	--	--	--
	10.5 to 20	Dark brown, fine, loose silty sand	SM	1	9	20	--
	20 to 35	Brown, fine, loose sand	SP	2	11	17	20
				3	10	15	19
				4	20	--	--
35 to 60	Brown/gray, fine, loose sand	SP	5	11	20	--	

Groundwater observed @ 60" BGS. No mottling observed.

Location	Depth (in)	Material Description	USCS Classification	DCP Depth (ft)	DCP Blow Counts (Blows/1.75 inches)		
					1	2	3
HA6	0 to 48	Dark brown, loose silty sand	SM	0	3	4	3
				1	4	4	5
				2	7	7	7
				3	10	15	15
				4	17	18	20
	48 to 60	Gray/light gray, fine, loose silty sand	SM	5	17	20	--

Groundwater observed @ 48" BGS. No mottling observed.

Location	Depth (in)	Material Description	USCS Classification	DCP Depth (ft)	DCP Blow Counts (Blows/1.75 inches)		
					1	2	3
HA7	0 to 24	Dark brown, fine, loose silty sand w/organics	SM	0	3	5	6
				1	6	6	6
				2	6	10	12
	24 to 38	Dark brown/gray, loose silty sand	SM	3	16	20	--
	38 to 50	Brown, fine, loose silty sand	SM	4	17	20	--
50 to 60	Gray/brown, fine, loose silty sand	SM	5	15	20	--	

Groundwater observed @ 60" BGS. No mottling observed.

Location	Depth (in)	Material Description	USCS Classification	DCP Depth (ft)	DCP Blow Counts (Blows/1.75 inches)		
					1	2	3
HA8	0 to 40	Dark brown, fine, loose silty sand	SM	0	4	5	4
				1	4	6	7
				2	8	9	11
				3	10	12	12
	40 to 50	Gray/brown, loose silty sand	SM	4	15	20	--
	50 to 60	Light gray/brown, loose silty sand	SM	5	20	--	--

Groundwater observed @ 48" BGS. No mottling observed.

Note: BGS = Below Ground Surface.

# Hand Auger Boring Log with DCP



Project Name: Hilton Head Airport Terminal Expansion

Project No.: HG205014

Project Location: Hilton Head Island, South Carolina

Location	Depth (in)	Material Description	USCS Classification	DCP Depth (ft)	DCP Blow Counts (Blows/1.75 inches)		
					1	2	3
HA9	0 to 48	Dark brown, fine, loose silty sand	SM	0	3	3	4
				1	3	4	6
				2	5	6	7
				3	12	20	--
				4	20	--	--
48 to 60	Gray/brown, fine, loose silty sand	SM	5	10	10	10	
Groundwater observed @ 36" BGS. No mottling observed.							

Location	Depth (in)	Material Description	USCS Classification	DCP Depth (ft)	DCP Blow Counts (Blows/1.75 inches)		
					1	2	3
HA10	0 to 15	Dark brown, fine, loose sand with silt and organics	SP-SM	0	2	3	4
				1	4	5	6
	15 to 30	Dark brown, fine, loose silty sand	SM	2	6	7	9
	30 to 60	Light gray/light brown silty sand	SM	3	17	16	15
				4	3	5	6
5	1	1	1				
Groundwater observed @ 48" BGS. No mottling observed.							

Note: BGS = Below Ground Surface.