



City of Alamogordo

Engineering Department □ 1376 E. Ninth Street □ Alamogordo, New Mexico 88310 □ Ph (575) 439-4235 FAX (575) 439-4343

May 21, 2021

To: All Bidders/Plan Holders

Re: **Addendum 2**
Public Works Bid No. 2021-003
Scenic Drive Extension to Mesa Verde Ranch

Addendum Number 2 is issued to provide changes and/or clarifications to the questions asked on the above referenced bid. Date, time, and location of submitting this bid remains unchanged.

General

Questions and responses offered at the Pre-Bid Meeting held May 12, 2021 at 1:30 PM; as well as additional questions received to date.

Question 1 – How will the removal of existing concrete sidewalks, ramps, curbs, and pavement be handled?

Response 1 – An allowance of \$50,000 has been included in the attached Revised Bid Schedule for Item No. 601000 Removal of Structures and Obstructions. The allowance shall be utilized for the removal of concrete flatwork, concrete curb and gutter, and asphalt pavement. The Contractor shall submit a Cost of Work with an allowable markup of up to but not exceeding 15-percent in accordance with Section 13 of the General Conditions.

Question 2 – Clarify the Lump Sum Bid Item 702810 Traffic Control Devices for Construction and the reference to unit price payment for actual field quantities as stated in Traffic Control Note Number 1 on Plan Sheet 6-1.

Response 2 – The estimated quantities shown for construction signing and related devices, provided on Plan Sheet 6-1, are for the Contractor's reference and information only. The reference to unit price payment for actual field quantities shall be disregarded. The Lump Sum Bid Price included in the Contractor's Bid Schedule shall cover the traffic control devices for the complete construction and associated phasing as provided using the included Traffic Control Plans or alternate plans to be designed, reviewed, and implemented by the Contractor.

Question 3 – There are six ADA ramps on the project that need to be removed (Bypass intersection & EOP) and a section of asphalt pavement that needs to be removed (10+49). The bid schedule doesn't have any removal items. Are the removals incidental?

Response 3 – Refer to the response provided for Question 1.

Question 4 – You provided a flagging allowance. How many hours of flagging does the allowance cover?

Response 4 – We anticipate 60 working days where a railroad flagger may be required.

Question 5 – Have all the railroad permits been acquired?

Response 5 – The railroad coordination and permitting has been completed.

Question 6 – Summary of Work Details (Sheet 1-3): 4", 6", 8" Concrete Pavements states that "concrete fillets will be paid as 6" Concrete Pavement." All fillet drawings state that the fillets are to be 8-inch. You have 8" Concrete Pavement line item. In which line item do the concrete fillets get paid.

Response 6 – The Summary of Work Details for Concrete Pavement 4", 6", 8" and Median Pavement incorrectly states that concrete fillets will be paid as 6" concrete pavement. **Concrete fillets will be paid as 8" Concrete Pavement.**

Question 7 – Is there any base course under the concrete pavements, sidewalk, and valley gutter? The plan details don't show any but the NMDOT standard requires 4 inches under the concrete.

Response 7 – The following clarification is provided for preparation beneath concrete flatwork:

- Concrete Sidewalk – to be placed on prepared subgrade, incidental to sidewalk construction.
- Curb & Gutter – shall be placed on prepared subgrade and six-inches of bed course, incidental to curb and gutter construction.
- Flush Header Curb – to be placed on prepared subgrade, incidental to flush header curb construction.
- Concrete Valley Gutter – to be placed on prepared subgrade and six-inches of bed course, incidental to valley gutter construction.
- Concrete Median Pavement – to be placed on prepared subgrade and four-inches of bed course, incidental to concrete median pavement construction.
- Concrete Fillet – to be placed on prepared subgrade and six-inches of bed course, incidental to concrete fillet construction.
- Concrete Drivepad – to be placed on prepared subgrade and six-inches of base course, incidental to concrete drivepad construction.

Question 8 – Can you please send us a detail for the flush header curb?

Response 8 – A flush header curb detail is provided on the revised Plan Sheet 2-3 included with this Addendum.

Question 9 – The medians are to receive landscape gravel. Can you please identify the rock color and size?

Response 9 – The landscape rock shall be ¾-inch Desert Tan or Mesa Red Stone Surfacing, smooth grade with Surfplan applied, a minimum of 2” thick.

Question 10 – Is the concrete box culvert two 8x10 single barrels or one double barrel?

Response 10 – The concrete box culvert, as designed, is a single (1) double opening structure.

Bid Documents & Specifications

1. Revised Bid Schedule

Construction Plans

1. Replace Plan Sheet 2-3 with Revised Plan Sheet included with this Addendum.

Attachments

1. Pre-Bid Meeting Agenda
2. Pre-Bid Meeting Sign-In Sheet
3. Revised Bid Schedule
4. Revised Plan Sheet 2-3
5. NMDOT Standard Drawing 623-14-1/3
6. NMDOT Standard Drawing 623-14-2/3
7. NMDOT Standard Drawing 623-14-3/3

All other provisions of the Contract Documents shall remain unchanged. This addendum is hereby made part of the Contract Documents to the same extent as though contained in the original documents and itemized listings thereof.

Each bidder is required to acknowledge receipt of each addendum in Section 3 of the Bid Proposal, failure to do so could render the bid non-responsive.

Plan holders: As a courtesy, please fill out the information below and fax this page back to the City of Alamogordo, Attention: Barbara Pyeatt, Purchasing Manager at 575-439-4117 or replying via e-mail to: bpyeatt@ci.alamogordo.nm.us

Received By (Company): _____

Date Received: _____

Number of sheets received: _____

Time Received: _____

Signature: _____



Public Works Bid No. 2021-003
Scenic Drive Extension to Mesa Verde Ranch Road
PRE-BID MEETING
AGENDA
May 12, 2021

1. Sign-in sheet and introductions
2. Project scope: new asphalt roadway construction including sidewalk, curb and gutter, mass grading, material import, subgrade preparation, base and surface course placement, all within the city limits of Alamogordo, New Mexico. The roadway will include a new railroad crossing and drainage improvements within railroad right of way. New potable water line and sanitary sewer lines will be constructed below the roadway surface. Each utility will be encased beneath the railroad. Miscellaneous work includes seeding, driveway construction, median construction, signage, striping, traffic control, and traffic signal modification.
3. Within the project limits, **the contractor will be working within New Mexico Department of Transportation (NMDOT) right of way and within Union Pacific Railroad (UPRR) right of way.** See Section 14 of the Specifications and Contract Documents for UPRR documents and exhibits. Make note of additional insurance requirements for UPRR. The NMDOT Form A-66, Traffic Control/Roadway Work Permit, will be required for work on US 54/70 Charlie Lee Memorial Relief Route.
4. The licensing requirement is GA-98; EE-98 for traffic signal installation.
5. Schedule: 300 calendar days to Substantial Completion; 15 days to Final Completion (Section 8, Page 2).
6. BID OPENING is Wednesday, June 9, 2021 at 1:30 pm in Commission Chambers at City Hall. Bidder questions must be submitted by 4:00 pm May 20, 2021. Questions received after that time will not be answered. Bidder questions must be directed to Purchasing either via fax at 575.439.4117 or via email to bpyeatt@ci.alamogordo.nm.us. Questions submitted will be answered by written addendum and will be binding.
7. Ten percent (10%) bid preference for local bidders is applicable for this project (See Section 2, Article 30.0). Section 2, Article 33.0 covers In-State Preference and Resident Veterans Preference. A Bidder must specify which preference they would claim if qualifying for more than one. The preference values are not cumulative. Bidder must meet criteria at time of bid opening.
8. Section 2, Article 17.0 lists documents that must be submitted with the bid package.
9. For contractors familiar with City of Alamogordo Specifications, take note that the specification chapters and standard drawings have been modified.
10. For Reclaimed Water Rates contact the Water Billing Department at 575.439.4288. Locations of Reclaimed Water Hydrants are listed in Chapter 01, Article 01-01-050.
11. Wage Rates apply. See Section 12 of Specifications and Contract Documents. Certified payrolls will be required and can be submitted via email.
12. Questions and discussion

Public Works Bid No. 2021-003
Scenic Drive Extension to Mesa Verde Ranch Road
Pre-Bid Meeting
 May 12, 2021
 SIGN IN SHEET

NAME	ORGANIZATION	CONTACT INFO
Nancy Beshaler NB	City of Alamogordo	575.439.4235 ext 1
Rusty Payne RWP	Smith Engineering	575.523.2395
Bob Johnson BJ	City of Alamogordo	575.439.4235 ext 3
Manuel Mata	Smith Engineering	—
Breana Mora	Renegade construction	
Bob J		
Shauna McNatt	Rock Canyon	575-551-1491
Cal McNatt	Rock Canyon	575-921-6525
Andrew Perea	GH Concrete	575-921-1384
Joel T. Darley	L L P	575-437-1134
Jeff Grain	Alamo Earthwork	575-437-3337
Charles Martin	General Hydronics Util.	575-430-5727
Edwin Boles	GHU —	575-430-1403
Jimmy Perea	GH Concrete	575-491-2324
Alonso Acosta	Mesa Verde Ent	575-437-2995
Derck Jarr	Mesa Verde Ent	575-437-2995
Heleene Sicker	COA	575-551-1731

SCENIC DRIVE EXTENSION TO MESA VERDE RANCH ROAD
Public Works Bid No. 2021-003
June 9, 2021
Addendum 002

ITEM NO.	APPROX. QTY.	CONSTRUCTION ITEMS Items with unit or lump sum bid prices should be written in numerals on the blank lines.	UNIT BID PRICE	AMOUNT OF BID
201000	1	Lump Sum (LS) Clearing and Grubbing , complete, in place and accepted by the City	\$ _____	\$ _____
203000	4,400	Cubic Yard (CY) Unclassified Excavation , complete, in place and accepted by the City	\$ _____	\$ _____
203100	1,730	Cubic Yard (CY) Borrow , complete, in place and accepted by the City	\$ _____	\$ _____
207000	10,200	Square Yard (SY) Subgrade Preparation , complete, in place and accepted by the City	\$ _____	\$ _____
303180	10,200	Square Yard (SY) Base Course 8" , complete, in place and accepted by the City	\$ _____	\$ _____
407000	10,200	Square Yard (SY) Asphalt Material for Tack Coat , complete, in place and accepted by the City	\$ _____	\$ _____
408100	10,200	Square Yard (SY) Prime Coat Material , complete, in place and accepted by the City	\$ _____	\$ _____
416107	10,200	Square Yard (SY) HMA SP-IV Complete 4" , complete, in place and accepted by the City	\$ _____	\$ _____
502036	16	Linear Feet (LF) Drilled Shaft Foundation 36" Diameter , complete, in place and accepted by the City	\$ _____	\$ _____
511000	2	Cubic Yard (CY) Structural Concrete, Class A , complete, in place and accepted by the City	\$ _____	\$ _____
540060	820	Pounds (Lbs) Reinforcing Bars Grade 60 , complete in place and accepted by the City	\$ _____	\$ _____

SCENIC DRIVE EXTENSION TO MESA VERDE RANCH ROAD
Public Works Bid No. 2021-003
JUNE 9, 2021
Addendum 002

570001	1	Lump Sum (LS) Double 10'x8' Concrete Box Culvert , complete, in place and accepted by the City	\$ _____	\$ _____
570437	250	Linear Feet (LF) 24" Storm Drain Culvert Pipe , complete, in place and accepted by the City	\$ _____	\$ _____
570441	2	Each (Ea) 24" Storm Drain Culvert Pipe End Section , complete, in place and accepted by the City	\$ _____	\$ _____
601000	1	Allowance (Allow) Removal of Structures and Obstructions , complete, in place and accepted by the City	<u>\$50,000.00</u>	<u>\$50,000.00</u>
602000	200	Cubic Yard (CY) Riprap Class A , complete, in place and accepted by the City	\$ _____	\$ _____
603100	1	Acre (Ac) Temporary Soil Stabilant , complete, in place and accepted by the City	\$ _____	\$ _____
603281	1	Lump Sum (LS) SWPPP Plan Preparation and Maintenance , complete, in place and accepted by the City	\$ _____	\$ _____
606542	240	Linear Feet (LF) Concrete Wall Barrier 42" , complete, in place and accepted by the City	\$ _____	\$ _____
607079	80	Linear Feet (LF) Pedestrian/Bicycle Railing , complete, in place and accepted by the City	\$ _____	\$ _____
608000	210	Square Feet (SF) Tactile Warning Surface , complete, in place and accepted by the City	\$ _____	\$ _____
608004	1,860	Square Yard (SY) Concrete Pavement 4" , complete, in place and accepted by the City	\$ _____	\$ _____

SCENIC DRIVE EXTENSION TO MESA VERDE RANCH ROAD
Public Works Bid No. 2021-003
JUNE 9, 2021
Addendum 002

608006	230	Square Yard (SY) Concrete Pavement 6" , complete, in place and accepted by the City	\$ _____	\$ _____
608007	1	Each (Ea) Sidewalk Trench Grate , complete, in place and accepted by the City	\$ _____	\$ _____
608108	195	Square Yard (SY) Concrete Pavement 8" , complete, in place and accepted by the City	\$ _____	\$ _____
608204	215	Square Yard (SY) Concrete Median Pavement 4" , complete, in place and accepted by the City	\$ _____	\$ _____
609200	110	Linear Feet (LF) Flush Header Curb , complete, in place and accepted by the City	\$ _____	\$ _____
609424	3,720	Linear Feet (LF) 24" Curb and Gutter (All Types) , complete, in place and accepted by the City	\$ _____	\$ _____
609478	2,910	Linear Feet (LF) 18" Raised Median Curb & Gutter , complete, in place and accepted by the City	\$ _____	\$ _____
609636	110	Linear Feet (LF) 36" Valley Gutter , complete, in place and accepted by the City	\$ _____	\$ _____
614024	420	Linear Feet (LF) 24" Steel Casing for 12" Diameter Utility Lines , complete, in place and accepted by the City	\$ _____	\$ _____
618000	1	Lump Sum (LS) Traffic Control Management , complete, in place and accepted by the City	\$ _____	\$ _____
621000	1	Lump Sum (LS) Mobilization , complete, in place and accepted by the City	\$ _____	\$ _____
623331	2	Each (Ea) Curb Drop Inlet , complete, in place and accepted by the City	\$ _____	\$ _____

SCENIC DRIVE EXTENSION TO MESA VERDE RANCH ROAD
Public Works Bid No. 2021-003
JUNE 9, 2021
Addendum 002

632000	1	Acre (Ac) Class A Seeding , complete, in place and accepted by the City	\$ _____	\$ _____
662000	3	Each (Ea) Manhole 4' Diameter 0'-6' Depth , complete, in place and accepted by the City	\$ _____	\$ _____
662062	2	Each (Ea) Manhole 4' Diameter 6' to 10' Depth , complete, in place and accepted by the City	\$ _____	\$ _____
662064	1	Each (Ea) Manhole 4' Diameter 10' to 14' Depth , complete, in place and accepted by the City	\$ _____	\$ _____
662066	1	Each (Ea) Manhole 4' Diameter 14' to 18' Depth , complete, in place and accepted by the City	\$ _____	\$ _____
662066	1	Each (Ea) Drop Manhole 4' Diameter 14' to 18' Depth , complete, in place and accepted by the City	\$ _____	\$ _____
663100	3	Each (Ea) Fire Hydrant including Tracing Wire, Termination Point, and Bollards , complete, in place and accepted by the City	\$ _____	\$ _____
663726	100	Linear Feet (LF) 6" Waterline , complete, in place and accepted by the City	\$ _____	\$ _____
663728	200	Linear Feet (LF) 8" Waterline , complete, in place and accepted by the City	\$ _____	\$ _____
663732	1,500	Linear Feet (LF) 12" Waterline , complete, in place and accepted by the City	\$ _____	\$ _____
663748	2	Each (Ea) Air Valve & Precast Enclosure , complete, in place and accepted by the City	\$ _____	\$ _____
663784	2	Each (Ea) Tie to Existing 12" Waterline , complete, in place and accepted by the City	\$ _____	\$ _____

SCENIC DRIVE EXTENSION TO MESA VERDE RANCH ROAD
Public Works Bid No. 2021-003
JUNE 9, 2021
Addendum 002

663830	1	Lump Sum (LS) Bypass Pumping , complete, in place and accepted by the City	\$ _____	\$ _____
663896	3	Each (Ea) Gate Valve-6" w/ Valve Box , complete, in place and accepted by the City	\$ _____	\$ _____
663897	7	Each (Ea) Gate Valve-12" w/ Valve Box , complete, in place and accepted by the City	\$ _____	\$ _____
663898	3	Each (Ea) Gate Valve-8" w/ Valve Box , complete, in place and accepted by the City	\$ _____	\$ _____
663908	220	Linear Feet (LF) Sanitary Sewer Line-8" , complete, in place and accepted by the City	\$ _____	\$ _____
663912	1,790	Linear Feet (LF) Sanitary Sewer Line-12" , complete, in place and accepted by the City	\$ _____	\$ _____
663950	1	Each (Ea) Connect to Existing Sanitary Sewer Manhole , complete, in place and accepted by the City	\$ _____	\$ _____
667210	1,350	Square Yard (SY) Landscape Gravel , complete, in place and accepted by the City	\$ _____	\$ _____
667500	6	Each (Ea) 6" Steel Bollard for Casing Vent , complete, in place and accepted by the City	\$ _____	\$ _____
690001	1	Allowance (Allow) Railway Flagging , complete, in place and accepted by the City	<u>\$97,500</u>	<u>\$97,500</u>
701000	253	Square Feet (SF) Panel Signs , complete, in place and accepted by the City	\$ _____	\$ _____
701100	640	Linear Feet (LF) Steel Post and Base Post for Aluminum Panel Signs , complete, in place and accepted by the City	\$ _____	\$ _____

SCENIC DRIVE EXTENSION TO MESA VERDE RANCH ROAD
Public Works Bid No. 2021-003
JUNE 9, 2021
Addendum 002

702810	1	Lump Sum (LS) Traffic Control Devices for Construction , complete, in place and accepted by the City	\$ _____	\$ _____
704700	1,600	Linear Feet (LF) Hot Thermoplastic Pavement Markings 4" , complete, in place and accepted by the City	\$ _____	\$ _____
704702	590	Linear Feet (LF) Hot Thermoplastic Pavement Markings 8" , complete, in place and accepted by the City	\$ _____	\$ _____
704704	500	Linear Feet (LF) Hot Thermoplastic Pavement Markings 24" , complete, in place and accepted by the City	\$ _____	\$ _____
704715	3	Each (Ea) Hot Thermoplastic Pavement Marking Combination (Thru, Right) Arrow , complete, in place and accepted by the City	\$ _____	\$ _____
704718	6	Each (Ea) Hot Thermoplastic Pavement Marking Left Arrow , complete, in place and accepted by the City	\$ _____	\$ _____
704719	3	Each (Ea) Hot Thermoplastic Pavement Marking Thru Arrow , complete, in place and accepted by the City	\$ _____	\$ _____
704740	4	Each (Ea) Hot Thermoplastic Pavement Marking Railroad Crossing , complete, in place and accepted by the City	\$ _____	\$ _____
707013	2	Each (Ea) Type I Standard, 13' , complete, in place and accepted by the City	\$ _____	\$ _____
707335	1	Each (Ea) Type III Standard, 35' Arm , complete, in place and accepted by the City	\$ _____	\$ _____

SCENIC DRIVE EXTENSION TO MESA VERDE RANCH ROAD
Public Works Bid No. 2021-003
JUNE 9, 2021
Addendum 002

709020	400	Linear Feet (LF) Rigid Electrical Conduit 2" (Dia.) , complete, in place and accepted by the City	\$ _____	\$ _____
709030	530	Linear Feet (LF) Rigid Electrical Conduit 3" (Dia.) , complete, in place and accepted by the City	\$ _____	\$ _____
710000	2	Each (Ea) Electrical Pull Box (Standard) , complete, in place and accepted by the City	\$ _____	\$ _____
710010	5	Each (Ea) Electrical Pull Box (Large) , complete, in place and accepted by the City	\$ _____	\$ _____
711005	110	Linear Feet (LF) Multi Conductor Cable 5 , complete, in place and accepted by the City	\$ _____	\$ _____
711007	1,210	Linear Feet (LF) Multi Conductor Cable 7 , complete, in place and accepted by the City	\$ _____	\$ _____
711020	460	Linear Feet (LF) Multi Conductor Cable 20 , complete, in place and accepted by the City	\$ _____	\$ _____
711106	1,450	Linear Feet (LF) Single Conductor 6 , complete, in place and accepted by the City	\$ _____	\$ _____
712031	3	Each (Ea) 3 Section Traffic Signal Assembly (LED) , complete, in place and accepted by the City	\$ _____	\$ _____
712051	5	Each (Ea) 5 Section Traffic Signal Assembly (LED) , complete, in place and accepted by the City	\$ _____	\$ _____
712202	2	Each (Ea) Pedestrian Countdown Signal (LED) , complete, in place and accepted by the City	\$ _____	\$ _____
712330	3	Each (Ea) 3 Section Backplate , complete, in place and accepted by the City	\$ _____	\$ _____

SCENIC DRIVE EXTENSION TO MESA VERDE RANCH ROAD
Public Works Bid No. 2021-003
JUNE 9, 2021
Addendum 002

712350	5	Each (Ea) 5 Section Backplate , complete, in place and accepted by the City	\$ _____	\$ _____
713025	2	Each (Ea) Accessible Pedestrian Signal Push Button Station , complete, in place and accepted by the City	\$ _____	\$ _____
713511	1	Each (Ea) Optical Detector, 1 Direction, 1 Channel , complete, in place and accepted by the City	\$ _____	\$ _____
713600	290	Linear Feet (LF) Optical Detector Cable , complete, in place and accepted by the City	\$ _____	\$ _____
713807	290	Linear Feet (LF) Video Cable , complete, in place and accepted by the City	\$ _____	\$ _____
713810	1	Each (Ea) Video Camera , complete, in place and accepted by the City	\$ _____	\$ _____
716301	4	Each (Ea) Internally Illuminated Sign , complete, in place and accepted by the City	\$ _____	\$ _____
716302	3	Each (Ea) Luminaires , complete, in place and accepted by the City	\$ _____	\$ _____
801000	1	Lump Sum (LS) Construction Staking by the Contractor , complete, in place and accepted by the City	\$ _____	\$ _____

BID TOTAL \$ _____

SCENIC DRIVE EXTENSION TO MESA VERDE RANCH ROAD
Public Works Bid No. 2021-003
JUNE 9, 2021
Addendum 002

NOTE: Gross receipts tax shall be paid with each pay request as it is submitted at the current tax rate for Alamogordo, New Mexico (Alamogordo – 8.125%)

To the City of Alamogordo, New Mexico (hereinafter called "OWNER"), the undersigned, (hereinafter called "BIDDER"), in compliance with your invitation for bids for the construction of **SCENIC DRIVE EXTENSION TO MESA VERDE RANCH ROAD - Public Works Bid No. 2021-003**, having carefully examined the Contract Documents and the site of the proposed Work, and being familiar with all of the conditions surrounding the construction of the proposed project including the availability of materials and labor, hereby proposes to furnish all labor, materials, and supplies, and to construct the Project in accordance with the Contract Documents, within the time set forth herein, and at the unit prices stated above. These prices are to cover all expenses incurred in performing the Work required under the Contract Documents of which this Bid Schedule is a part. Quantities shown in this Bid Schedule are estimated and actual payment will be made on the basis of the unit bid prices for confirmed quantities as constructed.

BIDDER acknowledges receipt of the following addenda:

CALLOUT NOTICE ACKNOWLEDGMENT:

Authorized Signature of Bidder

Business Name of Bidder

Authorized Signature of Bidder

Printed Name and Title of Authorized Signature

BIDDER'S New Mexico Contractor's License No. & Classification, Federal Employee ID#

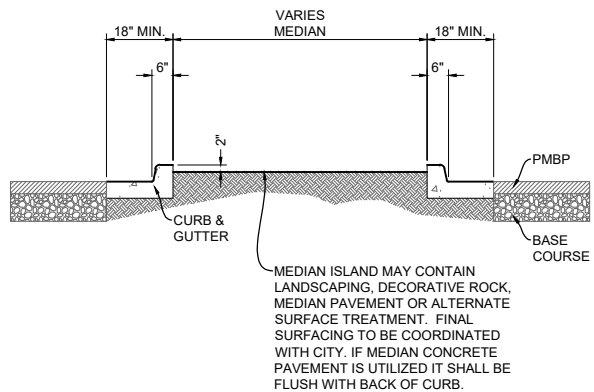
Address

Telephone

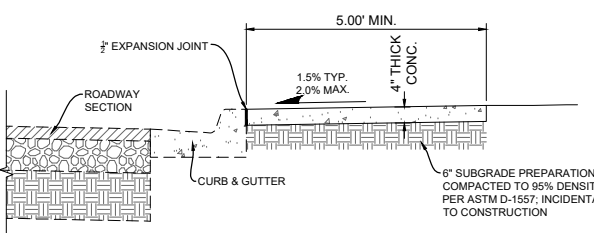
Fax

Email

(SEAL) If Bid Proposal is submitted by a corporation.



RAISED MEDIAN DETAIL
NOT TO SCALE

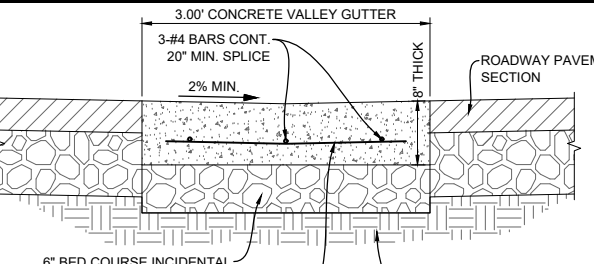


SIDEWALK ADJACENT TO CURB & GUTTER

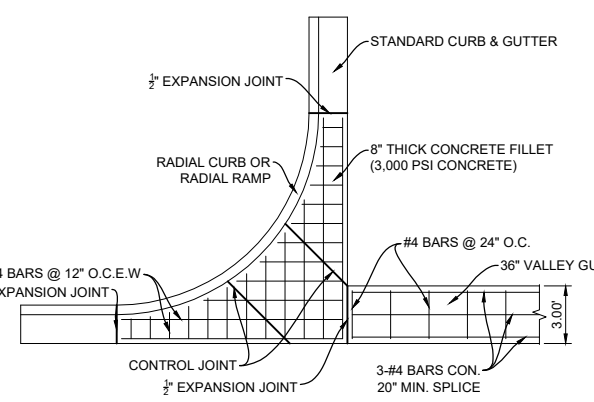
SIDEWALK NOTES:

1. PROVIDE 1/2" EXPANSION JOINT MATERIAL WHERE SIDEWALK ABUTS AN IMMOVABLE OBJECT (I.E. UTILITY POLE, WALL, CURB AND GUTTER, DRIVE APRON, STRUCTURES, ETC.).
2. PROVIDE CONTROL JOINTS EVERY 5'-0" FOR SIDEWALKS AND EVERY 10'-0" FOR CURBS; PROVIDE EXPANSION JOINTS EVERY 25'-0" MAX. FOR SIDEWALKS AND EVERY 50'-0" FOR CURBS.

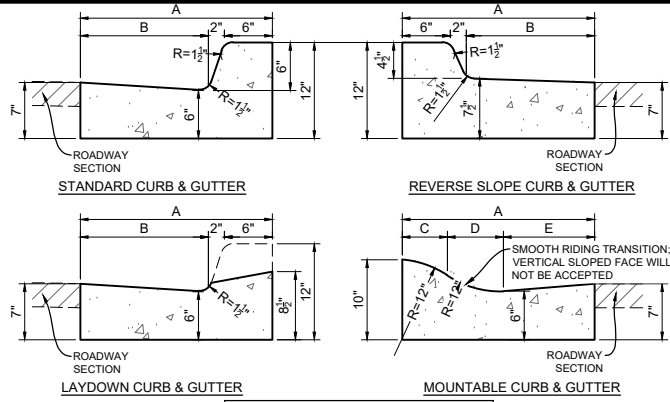
SIDEWALK DETAIL
NOT TO SCALE



CONCRETE VALLEY GUTTER DETAIL
NOT TO SCALE



CONCRETE RADIUS FILLET DETAIL
NOT TO SCALE



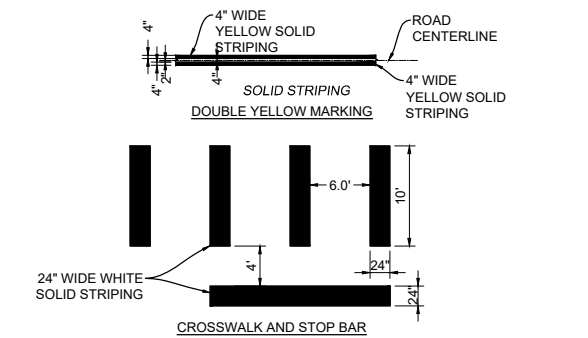
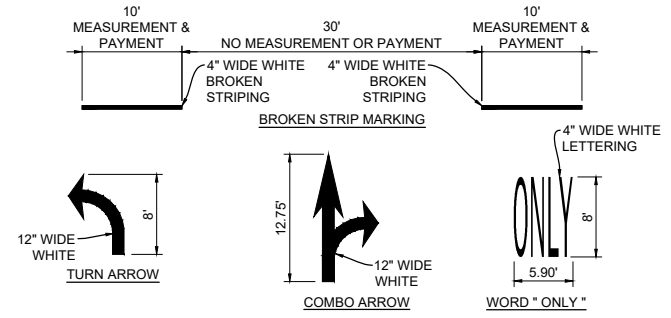
CURB AND GUTTER LEGEND

TYPE	I	II	III
A	1'-6"	2'-0"	2'-6"
B	0'-10"	1'-4"	1'-10"
C	0'-5 5/8"	0'-5 5/8"	0'-5 5/8"
D	0'-5"	0'-7"	0'-7"
E	0'-7 3/8"	0'-11 3/8"	1'-5 3/8"

CURB & GUTTER NOTES:

1. NEW CURB & GUTTER PROFILE SHALL MATCH EXISTING ADJACENT CURB & GUTTER AND/OR STREET PROFILE.
2. NEW CURB & GUTTER SHALL INCLUDE EIGHT-INCH (8") SUBGRADE PREPARATION, INCIDENTAL TO CONSTRUCTION.
3. NEW CURB & GUTTER SHALL INCLUDE SIX-INCH (6") BASE COURSE, INCIDENTAL TO CONSTRUCTION.
4. EDGES OF CURB & GUTTER NOT SPECIFICALLY DIMENSIONS SHALL BE EDGED WITH A 3/8" EDGING TOOL.
5. DIMENSIONS AT ROUNDED CORNERS MEASURED TO INTERSECTION OF STRAIGHT LINES.
6. PROVIDE CONTROL JOINTS EVERY 5'-0". CONTROL JOINTS SHALL BE TOOL JOINTED WITH TOP ROUND EDGE OF 3/8" RADIUS, DEPTH OF ONE-INCH (1"). THE FINISHED JOINT OPENING EXCLUDING RADIUS SHALL NOT BE WIDER THAN 3/8".
7. PROVIDE 1/2" EXPANSION JOINTS EVERY 50'-0" ALONG CURB & GUTTER.
8. TACK COAT EDGE OF GUTTER PRIOR TO PLACEMENT OF NEW PAVEMENT OR PAVEMENT PATCH.
9. THE CONSTRUCTION OF CURB & GUTTER AND/OR PAVEMENT SHALL BE CONSTRUCTED SO THAT THE GUTTER FLOW WILL BE CONSTANT (NO PONDING AREAS WILL BE ACCEPTED).

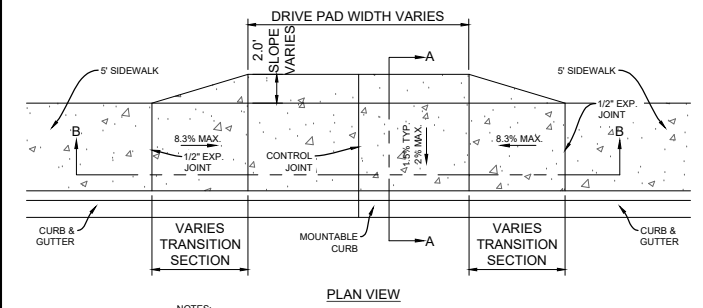
CURB AND GUTTER DETAILS
NOT TO SCALE



CONTRACTOR NOTE:

1. CROSSWALK AND STOP BARS SHALL BE 3M-N380 PREFORMED PATTERNED MARKING OR APPROVED EQUAL (O.A.E.).
2. ALIGN CROSSWALK WITH CENTERLINE OF WHEEL PATH, COORDINATE WITH OWNER PRIOR TO INSTALLATION.
3. SYMBOLS AND LEGENDS SHALL BE 3M-380IES PREFORMED PATTERNED MARKING O.A.E.
4. BROKEN STRIPING, DOUBLE STRIPING AND SINGLE STRIPING SHALL BE 90 MIL HOT THERMOPLASTIC PAVEMENT STRIPING.
5. MEASUREMENT AND PAYMENT FOR BROKEN STRIPING (10 LF) SHALL BE CALCULATED BY MATERIAL USED.

STRIPING DETAILS
NOT TO SCALE



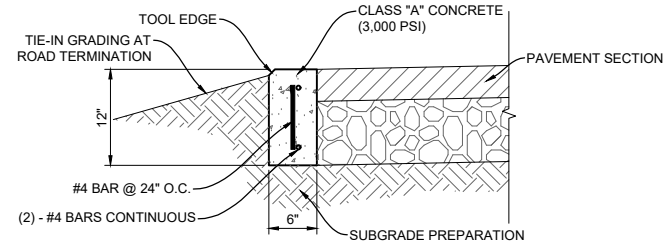
DRIVEPAD NOTES:

1. SUBGRADE PREPARATION AND SIX-INCH (6") BED COURSE INCIDENTAL TO DRIVEPAD CONSTRUCTION.

SLOPE CONVERSION

10%	10:1
8.3%	12:1
2%	50:1

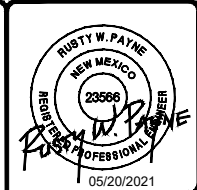
DRIVEPAD DETAILS
NOT TO SCALE



CURB NOTES:

1. FLUSH HEADER CURB SHALL BE INSTALLED AT ROADWAY TEMPORARY TERMINATION LOCATIONS.
2. SUBGRADE PREPARATION SHALL BE INCIDENTAL TO CONSTRUCTION.
3. TOOL EDGE OPPOSITE OF ASPHALT PAVEMENT.
4. REINFORCING IS INCIDENTAL TO CONSTRUCTION OF FLUSH HEADER CURB.

FLUSH HEAD CURB DETAIL
NOT TO SCALE



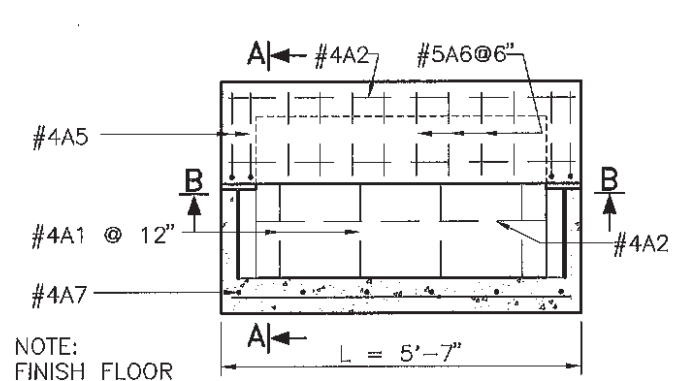
CITY OF ALAMOGORDO
OTERO COUNTY, NEW MEXICO

CITY OF ALAMOGORDO
SCENIC DRIVE EXTENSION TO MESA VERDE RANCH

Solutions for Today...
Vision for Tomorrow
201 N Church Street
Suite 200A
Las Cruces, NM 88001
Phone: 575-523-2395
www.smithengineering-pro

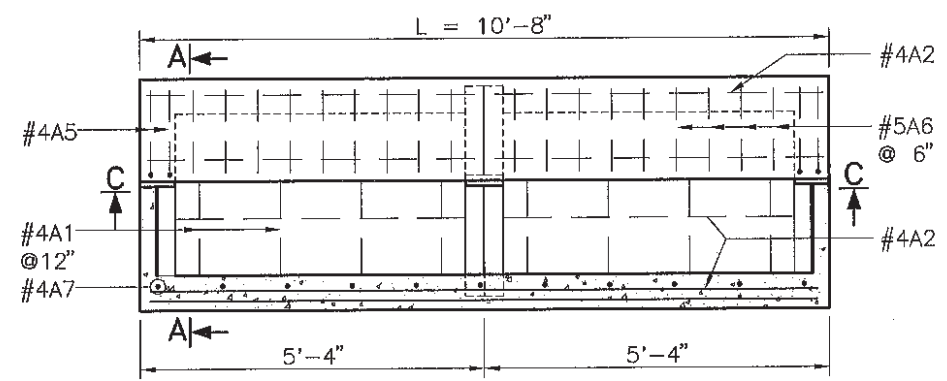


JOB NO:
816204
DATE:
MAY 2021
SHEET NO:
2-3

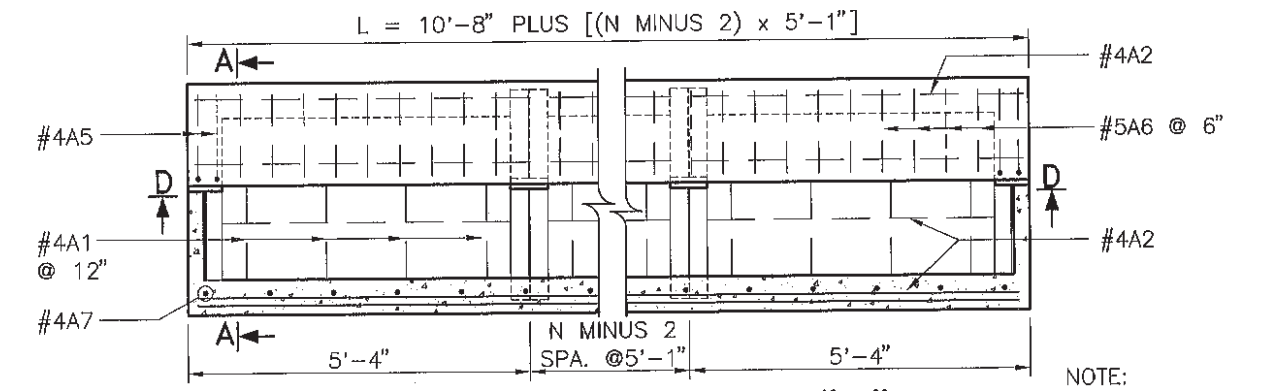


PLAN TYPE I

NOTE:
FINISH FLOOR
TO DRAIN
TO OUTLET PIPE.
SEE SKETCH.

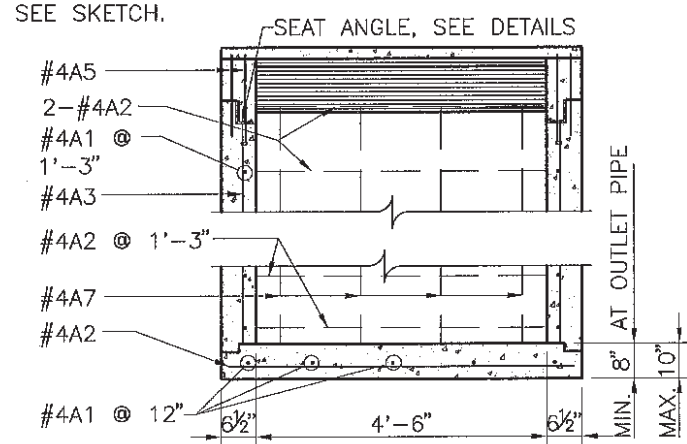


PLAN TYPE II

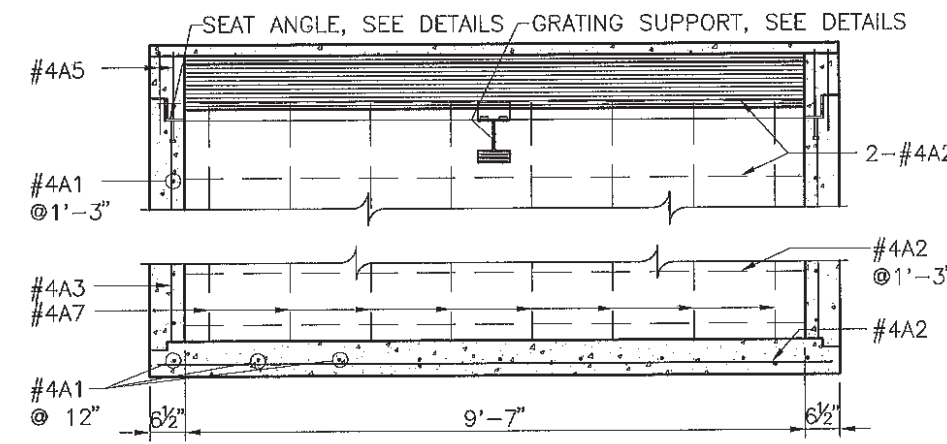


PLAN TYPE III TO TYPE "N"

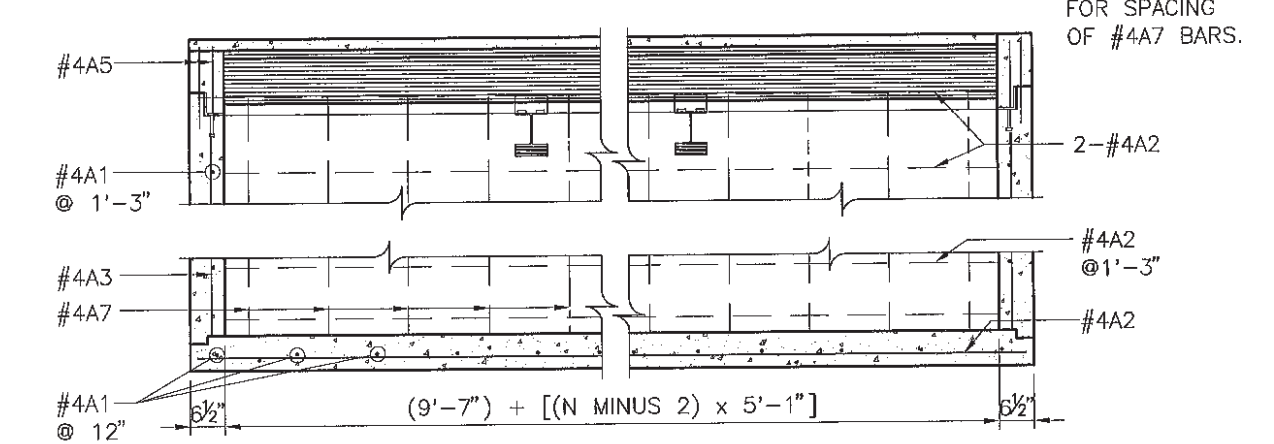
NOTE:
SEE REINFORCING
BAR SCHEDULE
FOR SPACING
OF #4A7 BARS.



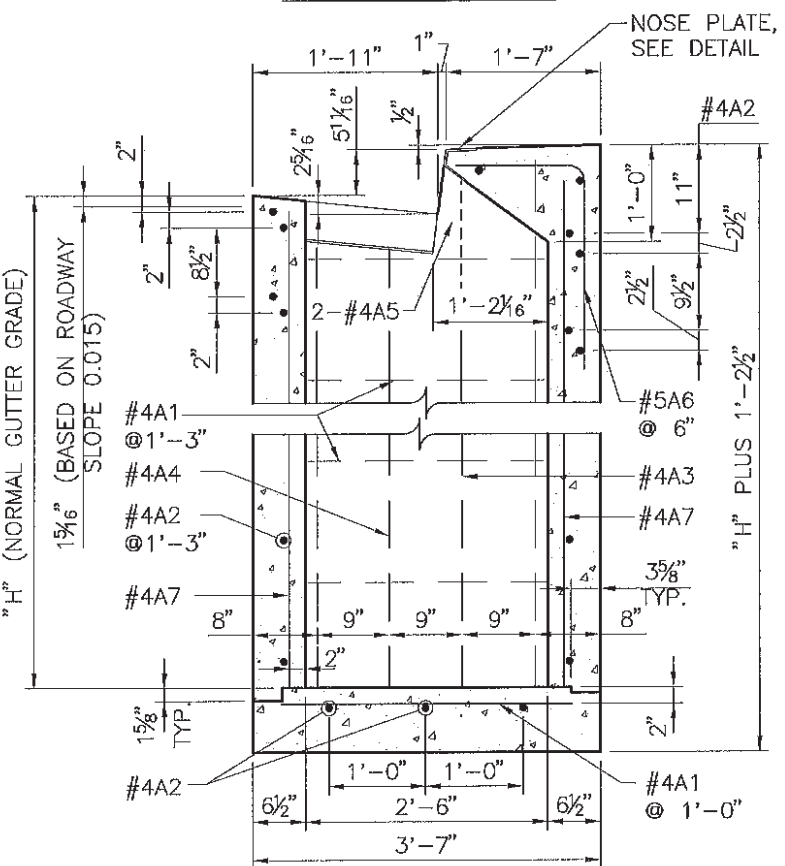
SECTION B-B



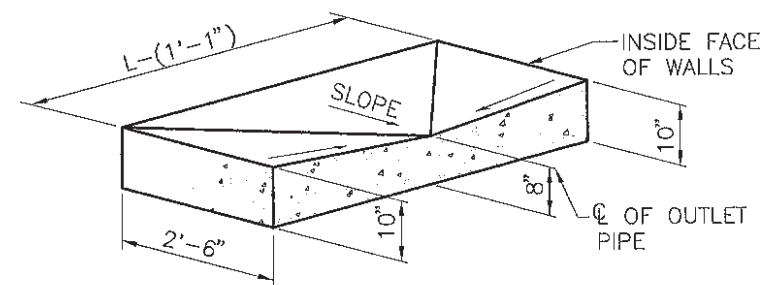
SECTION C-C



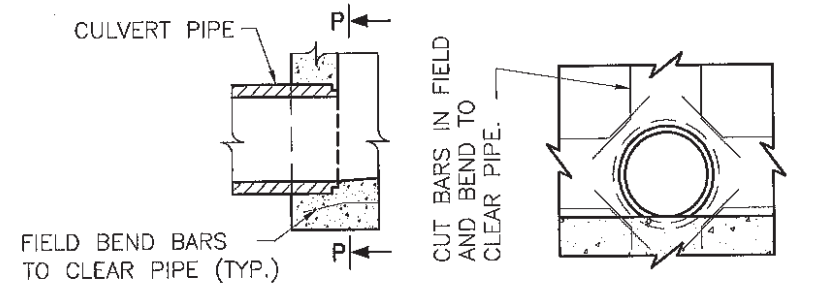
SECTION D-D



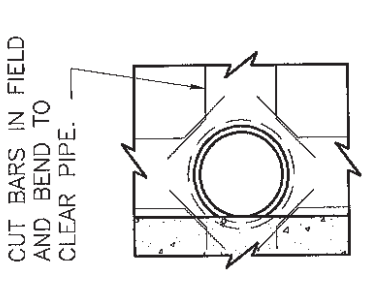
SECTION A-A
TYPICAL FOR ALL TYPES



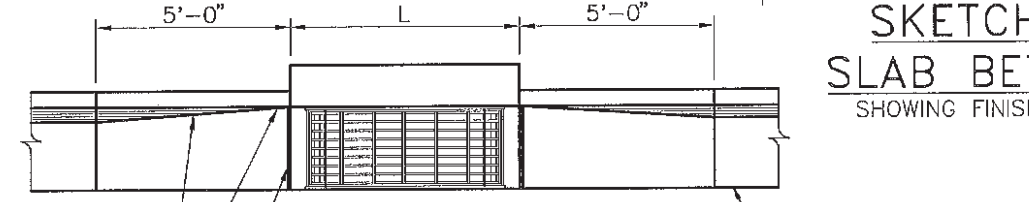
SKETCH OF FLOOR
SLAB BETWEEN WALLS
SHOWING FINISH TO DRAIN OUTLET PIPE



TYPICAL SECTION
@ C PIPE



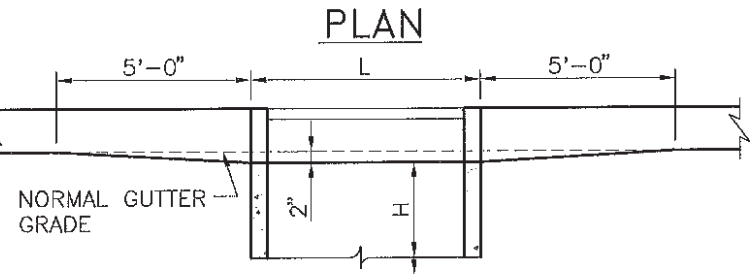
PART
SECTION P-P



GUTTER LINE
WARP TO MEET
DROP INLET

1/2" PREMOLDED BITUMINOUS JOINT.
COST TO BE INCLUDED IN
UNIT BID PRICE FOR CONCRETE.

EDGE OF PAVEMENT

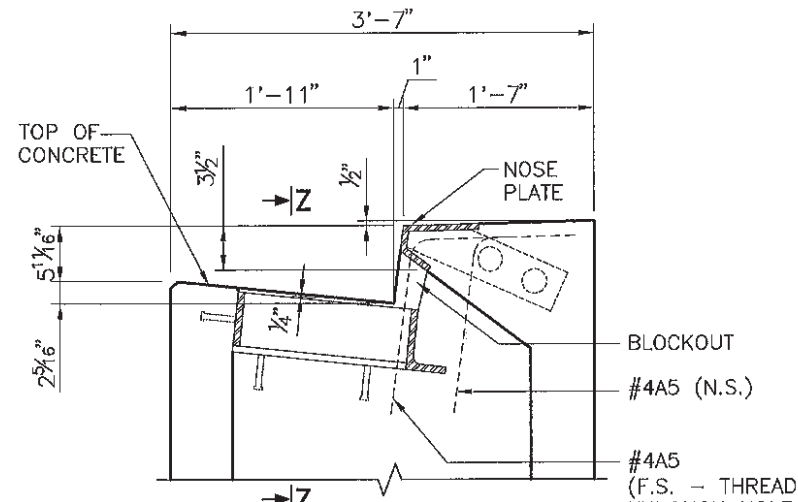


SECTION ALONG GUTTER LINE
DETAIL FOR PLACING DROP INLET

SERIAL 623-14-2/3 AND 623-14-3/3 MUST ACCOMPANY THIS SHEET.

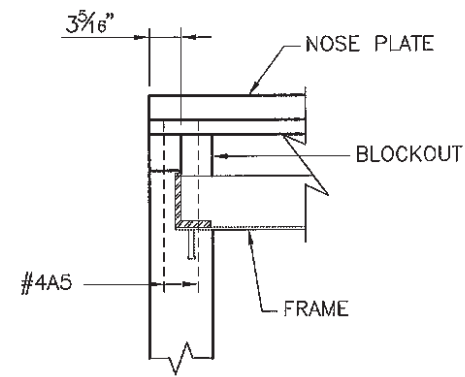


DATE	BY	DESCRIPTION
1/23/12	YML	REVISED TO LRFD.
REVISIONS (OR CHANGE NOTICES)		
NEW MEXICO DEPARTMENT OF TRANSPORTATION STANDARD DRAWING		
DROP INLET FOR TYPE "B" CURB		
DESIGNED BY: YML DRAWN BY: SKL CHECKED BY: YML/TM		
623-14-1/3		1 of 3



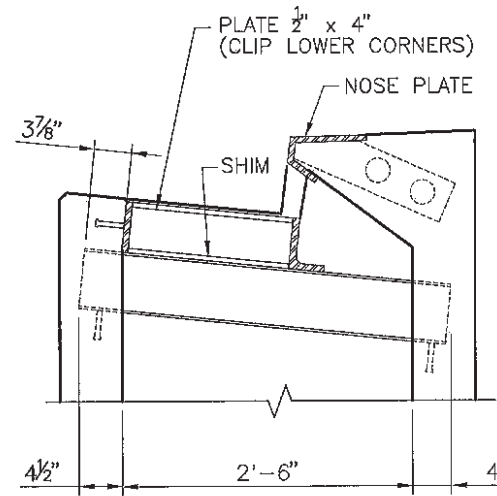
SECTION X-X

(SEE SHEET 3 OF 3)
(GRATE NOT SHOWN)



SECTION Z-Z

(GRATE NOT SHOWN)



SECTION Y-Y

(SEE SHEET 3 OF 3)
(GRATE NOT SHOWN)

GENERAL NOTES

1. WORKMANSHIP AND MATERIALS SHALL CONFORM TO THE NEW MEXICO DEPARTMENT OF TRANSPORTATION'S STANDARD SPECIFICATIONS FOR HIGHWAY AND BRIDGE CONSTRUCTION (CURRENT EDITION), APPLICABLE SUPPLEMENTAL SPECIFICATIONS AND SPECIAL PROVISIONS.
2. STRUCTURAL STEEL MATERIALS, WELDING, AND FABRICATION SHALL CONFORM TO SECTION 541 - STEEL STRUCTURES OF THE STANDARD SPECIFICATIONS.
3. ALL STRUCTURAL STEEL SHALL RECEIVE A PROTECTIVE COATING IN CONFORMANCE WITH SECTION 545 OF THE STANDARD SPECIFICATIONS.
4. ALL CONCRETE TO BE CLASS "A." CHAMFER ALL EXPOSED EDGES 3/4", UNLESS OTHERWISE NOTED.
5. ALL REINFORCING BARS SHALL CONFORM TO AASHTO M31, GRADE 60. DIMENSIONS REFER TO CENTERLINE OF BARS.
6. SEE ROADWAY PLANS FOR LOCATION OF DROP INLET, NUMBER, SIZE, AND FLOW LINE ELEVATIONS OF PIPE DRAINS, AND "H" DIMENSION.
7. OUTLET PIPES SHALL NOT BE SET AT END OF DROP INLET.

DESIGN DATA:

DESIGN IS IN ACCORDANCE WITH AASHTO LRFD SPECIFICATIONS 2010 FIFTH EDITION AND CURRENT INTERIMS.

DESIGN STRESSES: STRUCTURAL STEEL:
ASTM A-36
FY = 36 KSI

REINFORCED CONCRETE:
F'c = 3,000 PSI @ 28 DAYS
Fy = 60 ksi, GRADE 60

LIVE LOAD: HL-93

HORIZONTAL EARTH PRESSURE: 36 LBS./CU.FT. EQUIVALENT FLUID PRESSURE WITH 2' LIVE LOAD SURCHARGE

MAXIMUM: H = 11'-6"

ESTIMATED QUANTITIES							
TYPE	N	L	CLASS "A" CONC. † CU. YDS.	REINFORCING BARS - LBS.			STRUCTURAL STEEL - LBS.
				H = 8'-0" OR LESS	H = 8'-1" TO 10'-0"	H = 10'-0" TO 11'-6"	
I	1	5'-7"	0.324H+0.698	23.870 H + 94.779	25.206 H + 95.448	35.894 H + 100.790	570
II	2	10'-8"	0.528H+1.357	37.319 H + 180.150	41.327 H + 182.185	58.185 H + 190.838	1186
III	3	15'-9"	0.732H+2.017	50.768 H + 265.518	57.448 H + 268.858	81.496 H + 280.882	1796
IV	4	20'-10"	0.936H+2.676	64.217 H + 350.887	73.569 H + 354.563	104.297 H + 370.927	2412
V	5	25'-11"	1.140H+3.335	77.662 H + 436.258	89.690 H + 442.270	127.098 H + 460.974	3022
VI	6	31'-0"	1.344H+3.995	91.115 H + 521.716	105.811 H + 528.974	149.899 H + 551.018	3631

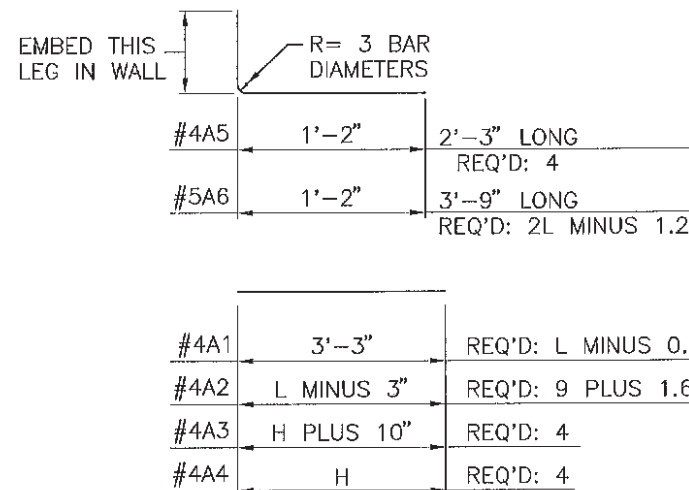
† SEE TABLE FOR PIPE DEDUCTION
N = NUMBER OF GRATINGS PLACED IN DROP INLET
H = NORMAL GUTTER ELEVATION TO FLOW LINE ELEVATION OF OUTLET PIPE. USE H IN FEET.

CLASS "A" CONCRETE DEDUCTIONS FOR ONE PIPE

SIZE	CONCRETE PIPE	METAL PIPE
18"	0.06 CU. YDS.	0.04 CU. YDS.
24"	0.10 CU. YDS.	0.06 CU. YDS.
30"	0.15 CU. YDS.	0.10 CU. YDS.
36"	0.21 CU. YDS.	0.14 CU. YDS.
42"	0.28 CU. YDS.	0.19 CU. YDS.

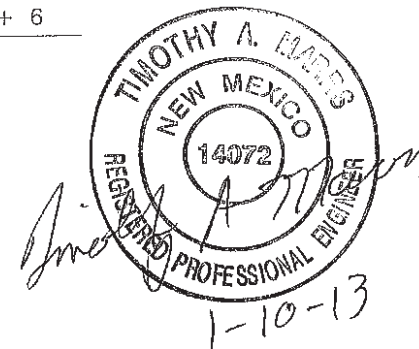
NOTE: DEDUCTIONS NOTED ARE FOR PIPES NORMAL TO WALLS. FOR SKEWED PIPES, MULTIPLY DEDUCTIONS BY SECANT OF SKEW ANGLE. FOR SMALLER PIPES OTHER THAN THOSE SHOWN IN TABLE, ADJUST DEDUCTIONS ACCORDINGLY.

REINFORCING BAR SCHEDULE



"H"	SPACES	#4A7 REQUIRED
8'-0" OR LESS	10"	H PLUS 6"
8'-1" TO 10'-0"	8"	H PLUS 6"
10'-1" TO 11'-6"	4 1/2"	H PLUS 6"

NOTE: "H" AND "L" ARE IN FEET. FINISH BARS TO THE NEAREST WHOLE NUMBER OF BARS.



DATE	BY	DESCRIPTION
1/23/12	YML	REVISED TO LRFD.
REVISIONS (OR CHANGE NOTICES)		

NEW MEXICO DEPARTMENT OF TRANSPORTATION STANDARD DRAWING

DROP INLET FOR TYPE "B" CURBS GRATES, FRAMES, NOSE PLATES AND CENTER SUPPORT BEAMS

DESIGNED BY: YML DRAWN BY: SKL CHECKED BY: YML/TM

623-14-2/3 2 of 3

SERIALS 623-14-1/3 AND 623-14-3/3 MUST ACCOMPANY THIS SHEET.

