

REFERENCE DRAWINGS: WINDOW DIAGRAM



SOUTH ELEVATION

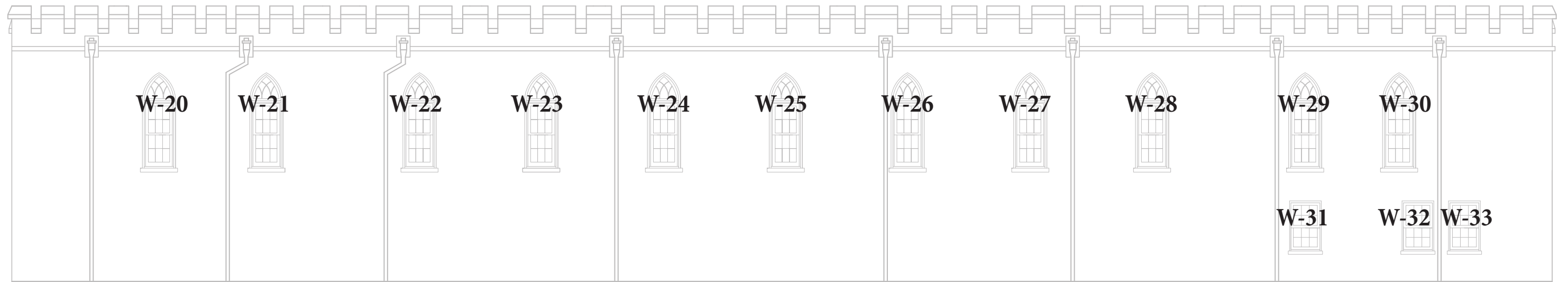


EAST ELEVATION
INTERIOR COURTYARD

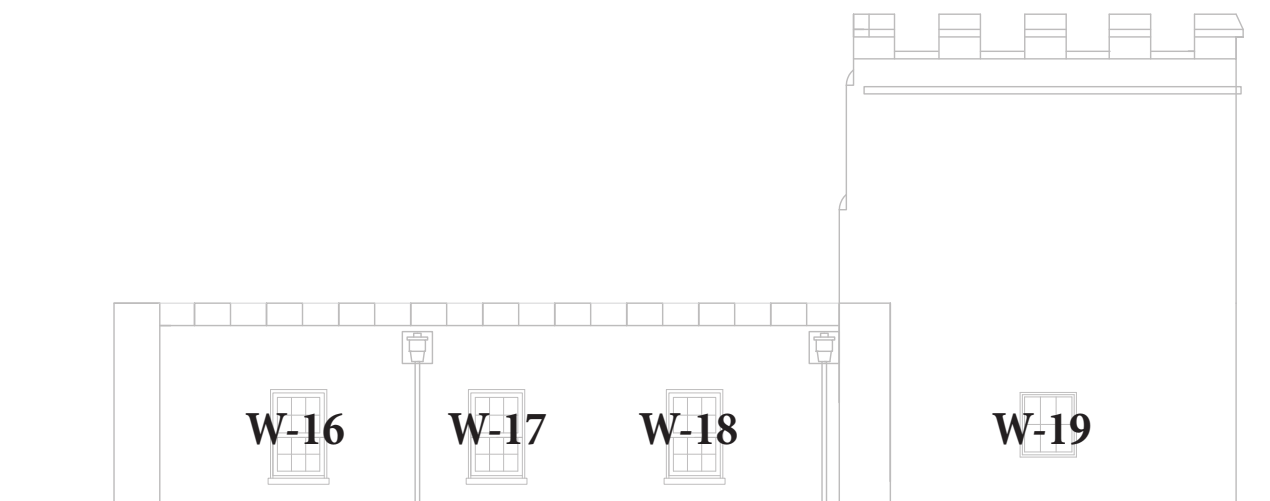


WEST ELEVATION
INTERIOR COURTYARD

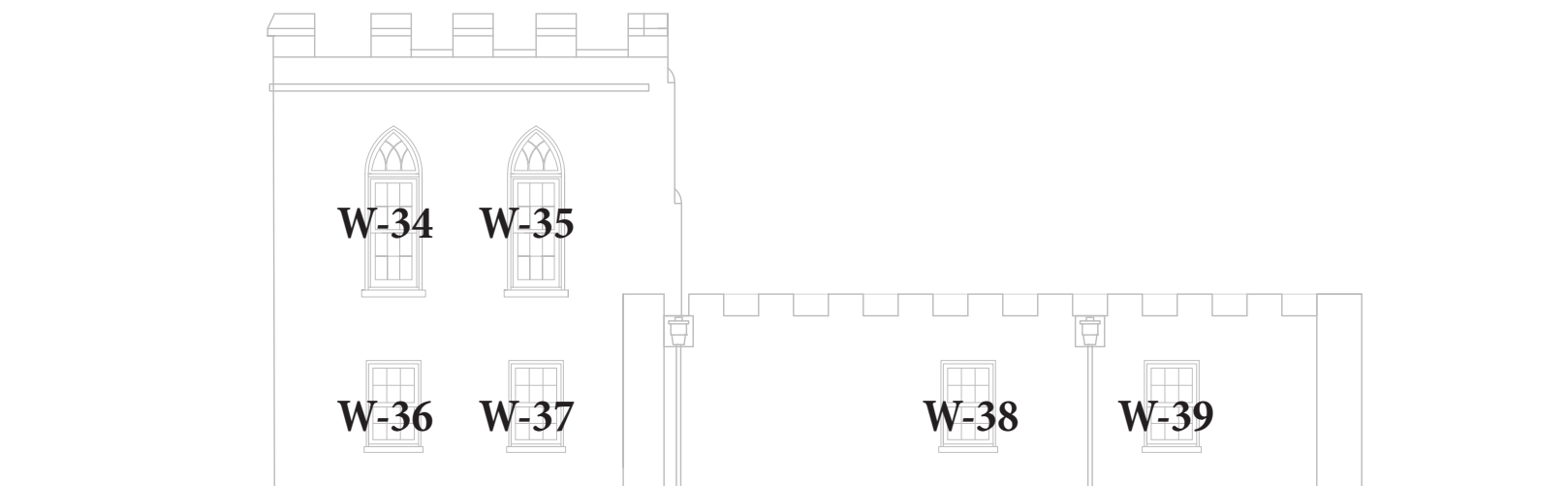
REFERENCE DRAWINGS: WINDOW DIAGRAM



NORTH ELEVATION



EAST ELEVATION



WEST ELEVATION

WINDOW SCHEDULE

Mark	Window Type	Width	Height
01	W1- Double Hung Window With Arched Transom	2' - 10 3/4"	6' - 6"
02	W1- Double Hung Window With Arched Transom	2' - 10 3/4"	6' - 6"
03	W1- Double Hung Window With Arched Transom	2' - 10 3/4"	6' - 6"
04	W1- Double Hung Window With Arched Transom	2' - 10 3/4"	6' - 6"
05	W1- Double Hung Window With Arched Transom	2' - 10 3/4"	6' - 6"
06	W1- Double Hung Window With Arched Transom	2' - 10 3/4"	6' - 6"
07	W1- Double Hung Window With Arched Transom	2' - 10 3/4"	6' - 6"
08	W1- Double Hung Window With Arched Transom	2' - 10 3/4"	6' - 6"
09	W1- Double Hung Window With Arched Transom	2' - 10 3/4"	6' - 6"
10	W1- Double Hung Window With Arched Transom	2' - 10 3/4"	6' - 6"
11	W1- Double Hung Window With Arched Transom	2' - 10 3/4"	6' - 6"
12	W2- Double Hung Window	2' - 6"	4' - 0"
13	W2- Double Hung Window	2' - 6"	4' - 0"
14	W2- Double Hung Window	2' - 6"	4' - 0"
15	W2- Double Hung Window	2' - 6"	4' - 0"
16	W2- Double Hung Window	2' - 6"	4' - 0"
17	W2- Double Hung Window	2' - 6"	4' - 0"
18	W2- Double Hung Window	2' - 6"	4' - 0"
19	W2- Double Hung Window	2' - 6"	2' - 6"
20	W1- Double Hung Window With Arched Transom	2' - 10 3/4"	6' - 6"
21	W1- Double Hung Window With Arched Transom	2' - 10 3/4"	6' - 6"
22	W1- Double Hung Window With Arched Transom	2' - 10 3/4"	6' - 6"
23	W1- Double Hung Window With Arched Transom	2' - 10 3/4"	6' - 6"
24	W1- Double Hung Window With Arched Transom	2' - 10 3/4"	6' - 6"
25	W1- Double Hung Window With Arched Transom	2' - 10 3/4"	6' - 6"
26	W1- Double Hung Window With Arched Transom	2' - 10 3/4"	6' - 6"
27	W1- Double Hung Window With Arched Transom	2' - 10 3/4"	6' - 6"
28	W1- Double Hung Window With Arched Transom	2' - 10 3/4"	6' - 6"
29	W1- Double Hung Window With Arched Transom	2' - 10 3/4"	6' - 6"
30	W1- Double Hung Window With Arched Transom	2' - 10 3/4"	6' - 6"
31	W2- Double Hung Window	2' - 6"	4' - 0"
32	W2- Double Hung Window	2' - 6"	4' - 0"
33	W2- Double Hung Window	2' - 6"	4' - 0"
34	W1- Double Hung Window With Arched Transom	2' - 10 3/4"	6' - 6"
35	W1- Double Hung Window With Arched Transom	2' - 10 3/4"	6' - 6"
36	W2- Double Hung Window	2' - 6"	4' - 0"
37	W2- Double Hung Window	2' - 6"	4' - 0"
38	W2- Double Hung Window	2' - 6"	4' - 0"
39	W2- Double Hung Window	2' - 6"	4' - 0"