

STATE	COUNTY	FILE NO.	PROJECT NO.	ROUTE NO.	SHEET NO.
SC	BEAUFORT			US-21 BUS	1

SHEET INDEX

SHEET NO.	DESCRIPTION	SHEET TOTALS
1	TITLE SHEET	1
2	SUMMARY OF ESTIMATED QUANTITIES	1
3A	DETAIL SHEET	1
6	PLAN AND PROFILE SHEET	1
EC1	DRAINAGE & EROSION CONTROL SHEET	1
S0.0-S3.0	STRUCTURAL SHEETS	7
TOTAL		12

CITY OF BEAUFORT



PLAN AND PROFILE OF WHITEHALL DRIVE BOARDWALK

FROM: SEA ISLAND PARKWAY (US 21 – BUS)
TO: WHITEHALL DRIVE

NPDES PERMIT INFORMATION	
Disturbed Area =	0.05 Acre(s)
Project Area =	0.21 Acre(s)
Approximate Location of Roadway is	
Begin	
Latitude	32°25'22" N
Longitude	80°40'02" W
End	
Latitude	32°25'20" N
Longitude	80°40'03" W
Hydraulic and NPDES Design provided by:	
I.C.E.	
Designs may be obtained from the SCDOT Regional Production Group	

Hydraulic Design Reference for these plans is the:
2009
Edition of SCDOT's "Requirements for Hydraulic Design Studies"

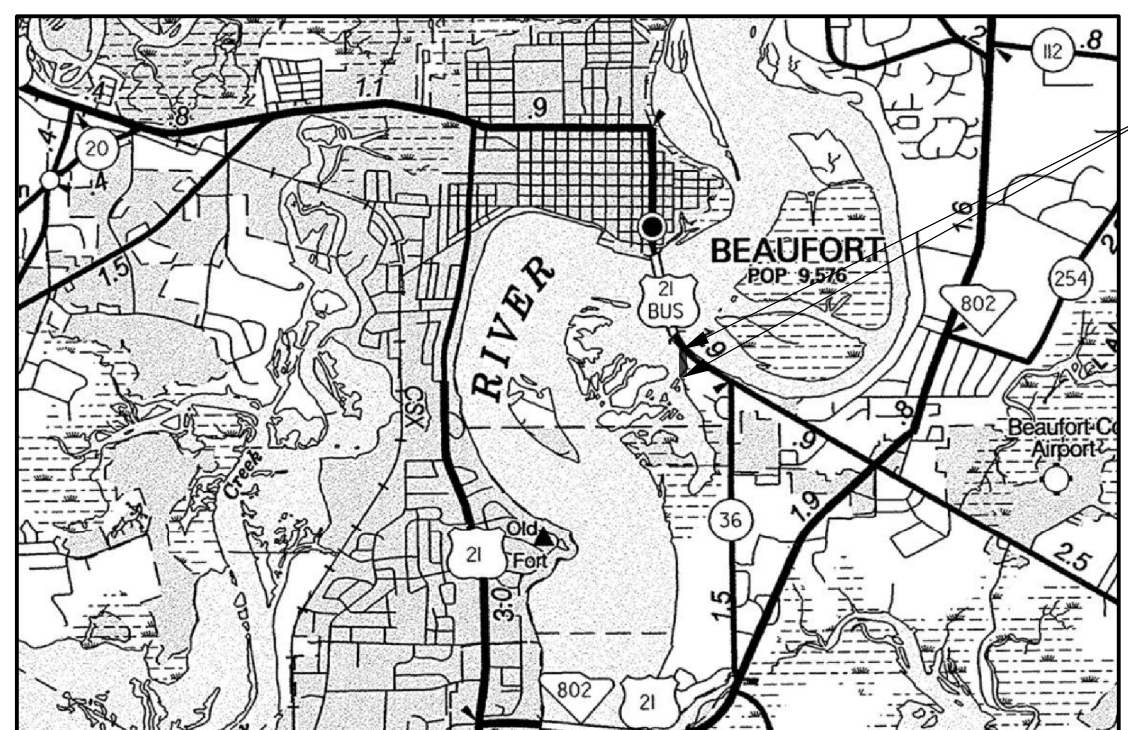
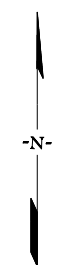
Design Reference for these plans is the:
2011
AASHTO "A Policy on Geometric Design of Highways and Streets"

ENVIRONMENTAL PERMIT INFORMATION			
USACE PERMIT	___YES___	___NO___	
NEPA DOCUMENT	___YES___	___NO___	
401 CERTIFICATION	___YES___	___NO___	
OCRM CAP	___YES___	___NO___	
NAVIGABLE WATERS	___SC___	___USCG___	___USACE___
			___N/A___

3 DAYS BEFORE DIGGING IN
SOUTH CAROLINA
CALL 811
SOUTH CAROLINA 811 (SC811)
WWW.SC811.COM
ALL UTILITIES MAY NOT BE A MEMBER OF SC811

RAILROAD INVOLVEMENT?
YES NO

TRAFFIC DATA	
2019	ADT _____
2039	ADT _____



WHITEHALL DRIVE BOARDWALK
BEGIN CONSTRUCTION
STA.10+25.50
END CONSTRUCTION
STA.12+23.50

LAYOUT
N.T.S.

	GREENLAWN DRIVE	TOTAL (MILES)
NET LENGTH OF ROADWAY	-	-
NET LENGTH OF BRIDGES	-	-
NET LENGTH OF PROJECT	0.04	0.04
LENGTH OF EXCEPTIONS	-	-
GROSS LENGTH OF PROJECT	0.04	0.04

EQUALITIES IN STATIONING:
NONE

NOTE: EXCEPT AS MAY OTHERWISE BE SPECIFIED ON THE PLANS OR IN THE SPECIAL PROVISIONS, ALL MATERIALS AND WORKMANSHIP ON THIS PROJECT SHALL TO CONFORM WITH SOUTH CAROLINA DEPARTMENT OF TRANSPORTATION STANDARD SPECIFICATIONS FOR HIGHWAY CONSTRUCTION (2007 EDITION) AND STANDARD DRAWINGS FOR ROAD CONSTRUCTION IN EFFECT AT THE TIME OF LETTING.

CONSULTING ENGINEERING FIRM
INFRASTRUCTURE CONSULTING & ENGINEERING

For Right Of Way Acquisition:

Consultant Engineer of Record

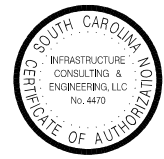
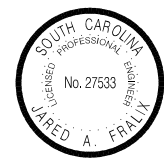
Date

ENGINEER OF RECORD

FOR CONSTRUCTION : _____ DATE _____

SUMMARY OF ESTIMATED QUANTITIES

PAYITEM	DESCRIPTION	QUANTITY	UNIT
1031000	MOBILIZATION	NEC	LS
1032010	BONDS AND INSURANCE	NEC	LS
1050800	CONSTRUCTION STAKES, LINES & GRADES	1	EA
1071000	TRAFFIC CONTROL	NEC	LS
2012000	CLEARING & GRUBBING WITHIN ROADWAY	NEC	LS
2025000	REMOVAL & DISPOSAL OF EXISTING ASPHALT PAVEMENT	5	SY
2031000	UNCLASSIFIED EXCAVATION	10	CY
2033000	BORROW EXCAVATION	10	CY
6020005	PERMANENT CONSTRUCTION SIGNS (GROUND MOUNTED) SCHEME C	184	SF
6531210	U-SECTION POST FOR SIGN SUPPORTS - 3P	132	LF
7203220	CONCRETE CURB AND GUTTER(2'-0") SLOPING FACE	60	LF
7204100	CONCRETE SIDEWALK(4" UNIFORM)	34	SY
7204600	CONCRETE SIDEWALK(6" UNIFORM)	16	SY
7209000	PEDESTRIAN RAMP CONSTRUCTION (6" UNIFORM)	25	SY
8041025	RIP-RAP (CLASS B)	210	CY
8100100	PERMANENT COVER	0.05	ACRE
8100200	TEMPORARY COVER	0.05	ACRE
8104005	FERTILIZER (NITROGEN)	5	LB
8104010	FERTILIZER (PHOSPHORIC ACID)	5	LB
8104015	FERTILIZER (POTASH)	5	LB
8105005	AGRICULTURAL GRANULAR LIME	100	LB
8151203	HYDRAULIC EROSION CONTROL PRODUCT (HECP) - TYPE 3	0.05	ACRE
8152004	INLET STRUCTURE FILTER - TYPE F (WEIGHTED)	20	LF
8153000	SILT FENCE	350	LF
8153090	REPLACE/REPAIR SILT FENCE	35	LF
8154050	REMOVAL OF SILT RETAINED BY SILT FENCE	88	LF
	STAINLESS STEEL BOLLARD	2	EA
	BOARDWALK INCLUDING FILTER FABRIC	1	LS



4				
3				
2				
1				
REV. NO.	BY	DATE	DESCRIPTION OF REVISION	
DESIGNED BY:	TKC	DATE		
DRAWN BY:	TKC	DATE		
CHECKED BY:	JAF	DATE		

BEAUFORT COUNTY
CITY OF BEAUFORT

WHITEHALL DRIVE BOARDWALK
SUMMARY OF ESTIMATED QUANTITIES

SHEET 2 SCALE: NTS

STATE	COUNTY	FILE NO.	PROJECT NO.	ROUTE NO.	SHEET NO.
SC	BEAUFORT			US-21 BUS	3A

REFERENCES

NATIONAL DOCUMENTS
 REVISED DRAFT GUIDELINES FOR ACCESSIBLE PUBLIC RIGHTS-OF-WAY NOVEMBER, 2005
 MUTCD 2009

SCDOT DOCUMENTS
 SCDOT TRANSITION PLAN
 QPL 61

RELATED DRAWINGS & KEYWORDS
 720-929-02

THIS DRAWING IS ONLY VALID FOR CONSTRUCTION WHEN SEALED AND SIGNED BY A PROFESSIONAL ENGINEER REGISTERED IN THE STATE OF SOUTH CAROLINA. CHECK WWW.SCDOT.ORG FOR LATEST UPDATE.

SOUTH CAROLINA REGISTERED PROFESSIONAL ENGINEER
 NO. 21242
 JAMES W. KENDALL JR.

James W. Kendall Jr.
 SIGNATURE

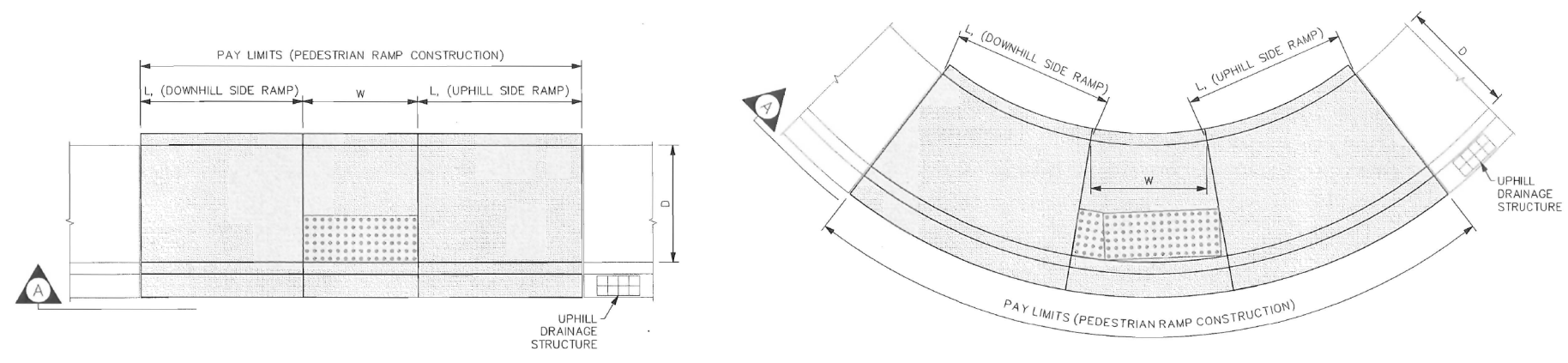
9-27-2012
 DATE

6	---	---	---
5	---	---	---
4	---	---	---
3	---	---	---
2	---	---	---
1	---	---	---
0	1/13	DSO	NEW DRAWING
#	DATE	CHK	DESCRIPTION

SCDOT
 SOUTH CAROLINA DEPARTMENT OF TRANSPORTATION
 DESIGN STANDARDS OFFICE
 955 PARK STREET
 ROOM 405
 COLUMBIA, SC 29201

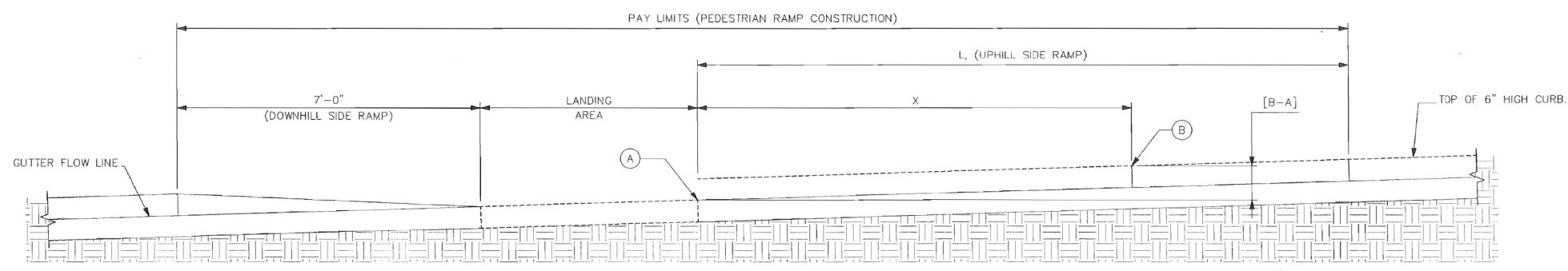
STANDARD DRAWING
 PEDESTRIAN RAMP STANDARD VARIANTS

720-929-01
 EFFECTIVE LETTING DATE: JANUARY, 2013



THIS DETAIL ILLUSTRATES HOW TO USE A PEDESTRIAN RAMP (SHOWN LEFT) IN A RADIAL APPLICATION (SHOWN RIGHT). RAMP DIMENSIONS L AND W ARE MEASURED FROM THE BACK EDGE OF SIDEWALK. THIS MEASUREMENT CONCEPT APPLIES TO ALL PEDESTRIAN RAMP VARIANTS SHOWN ON STANDARD DRAWING 720-929-02. SEE INDIVIDUAL RAMP DETAILS FOR W AND L DIMENSIONS.

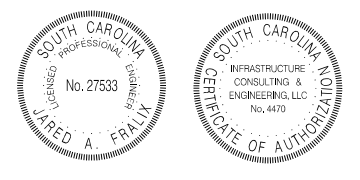
DETAIL
 SCALE: 3/16" = 1'-0"
 APPLICATION OF PEDESTRIAN RAMP VARIANTS



MEASURE HORIZONTALLY X (10'-0" SHOWN IN EXAMPLE) FROM POINT A (EDGE OF LANDING) TOWARDS THE UPHILL SIDE OF SIDEWALK POINT B. THEN MEASURE THE ELEVATION OF POINTS A & B. SEE TABLES ON RAMP DETAIL SHEETS FOR L (UPHILL SIDE RAMP) LENGTH.

SECTION
 SCALE: 3/8" = 1'-0"
 ELEVATION VIEW
 DETERMINING UPHILL SIDE RAMP LENGTH

JE INFRASTRUCTURE
 CONSULTING & ENGINEERING



4			
3			
2			
1			
REV. NO.	BY	DATE	DESCRIPTION OF REVISION
DESIGNED BY:		DATE	
DRAWN BY:		DATE	
CHECKED BY:	JAF	DATE	

BEAUFORT COUNTY
 CITY OF BEAUFORT

WHITEHALL DRIVE BOARDWALK
 DETAIL SHEET

SHEET 3A SCALE: NTS

STATE	COUNTY	FILE NO.	PROJECT NO.	ROUTE NO.	SHEET NO.
SC	BEAUFORT			US-21 BUS.	5

GENERAL NOTES

GENERAL CONSTRUCTION NOTES:

THE CITY ADMINISTRATOR MUST SPECIFICALLY AUTHORIZE CHANGES INVOLVING INCREASED COST OF THE PROJECT OR CHANGES IN ALIGNMENT. THE DIRECTOR OF PROJECTS & PUBLIC FACILITIES IS PERMITTED UNDER THE DIRECTION OF THE CITY ADMINISTRATOR TO AUTHORIZE MINOR ALTERATIONS NOT IN CONFLICT WITH THE STANDARD PRACTICES OF THE CITY. FORWARD INFORMATION ON ANY PROPOSED CHANGES IN ALIGNMENT TO THE CITY OFFICE AS SOON AS POSSIBLE.

SEE INDIVIDUAL CURVES ON REFERENCE DATA SHEET FOR SUPERELEVATION RATE AND DESIGN SPEED, AS APPLICABLE.

THE LOCATIONS OF EXISTING UTILITIES SHOWN ON THE PLANS HAVE BEEN DETERMINED FROM AVAILABLE INFORMATION AND ARE PROVIDED FOR THE CONVENIENCE OF THE CONTRACTOR. THE ENGINEER ASSUMES NO RESPONSIBILITY FOR THE ACCURACY OR COMPLETENESS OF THE UTILITIES INFORMATION SHOWN ON THE DRAWINGS. IT IS THEREFORE THE CONTRACTOR'S RESPONSIBILITY TO CONFIRM THAT THE PROPER COORDINATION WITH THE VARIOUS UTILITY OWNERS HAS BEEN PERFORMED.

THE CONTRACTOR SHALL COOPERATE WITH THE UTILITY OWNERS DURING RELOCATION OPERATIONS. THE CONTRACTOR SHALL EXERCISE CAUTION WHEN CROSSING AN UNDERGROUND UTILITY WHETHER SHOWN ON THE DRAWINGS OR LOCATED BY THE UTILITY COMPANY. COST OF DAMAGES TO ANY UTILITIES AS A RESULT OF CONSTRUCTION SHALL BE THE RESPONSIBILITY OF THE CONTRACTOR.

ALL WORKMANSHIP AND MATERIALS USED ON THIS PROJECT SHALL CONFORM TO THE SCDOT STANDARD SPECIFICATIONS FOR HIGHWAY CONSTRUCTION (2007 EDITION), SCDOT 2007 SUPPLEMENTAL SPECIFICATIONS, SCDOT SUPPLEMENTAL TECHNICAL SPECIFICATIONS IN EFFECT AT THE TIME OF LETTING, AND SCDOT 2009 STANDARD DRAWINGS EXCEPT WHERE OTHERWISE NOTED IN THE PLANS.

ALL EXISTING ROAD SIGNS AFFECTED BY CONSTRUCTION ACTIVITIES SHALL BE RETAINED, RELOCATED, OR REMOVED AS DIRECTED BY ENGINEER. PAYMENT FOR THIS WORK SHALL BE INCLUDED IN THE LUMP SUM COST FOR CLEARING AND GRUBBING.

ALL NEW SIGNS SHALL BE PLACED IN ACCORDANCE WITH THE MANUAL ON UNIFORM TRAFFIC CONTROL DEVICES AND SCDOT STANDARD DRAWINGS. NEW 2P & 3P SIGN SUPPORTS REQUIRED FOR RELOCATED SIGNS WILL BE PAID PER LINEAR FOOT INSTALLED AND ACCEPTED.

THE CONTRACTOR SHALL FURNISH, INSTALL, AND MAINTAIN ALL NECESSARY PROVISIONS FOR TRAFFIC CONTROL FOR THE DURATION OF THE PROJECT. THESE PROVISIONS, AS IN EACH CASE IS APPLICABLE, WILL CONFORM TO THE REQUIREMENTS CONTAINED IN THE SCDOT STANDARD SPECIFICATIONS, STANDARD DRAWINGS, SUPPLEMENTAL SPECIFICATIONS, SPECIAL PROVISIONS, THE FEDERAL HIGHWAY ADMINISTRATION MANUAL ON UNIFORM TRAFFIC CONTROL DEVICES, AND AS DIRECTED BY THE ENGINEER. THE CONTRACTOR SHALL SUBMIT THE TRAFFIC CONTROL PLAN TO THE CITY FOR APPROVAL BEFORE BEGINNING CONSTRUCTION.

THE LUMP SUM COST FOR TRAFFIC CONTROL SHALL INCLUDE ALL WORK AS DIRECTED ABOVE. THIS LUMP SUM COST SHALL INCLUDE TEMPORARY CONSTRUCTION SIGNS, BARRICADES, DRUMS, CONES, LIGHTS, AND OTHER ITEMS AS REQUIRED TO COMPLETE THIS WORK.

CONTRACTOR SHALL REFER TO SCDOT STD. DWG. 605-010-02 FOR PLACEMENT OF PERMANENT CONSTRUCTION SIGNS. THIS PROJECT REQUIRES TWO (2) SCHEME C. SIGNS SHALL BE PAID FOR PER SQUARE FOOT INSTALLED AND ACCEPTED UNDER THE BID ITEM FOR PERMANENT CONSTRUCTION SIGNS.

NARRATIVE DESCRIPTION:

THIS PROJECT CONSTRUCTS A PEDESTRIAN BOARDWALK CONNECTING US-21 TO ABANDONED WHITEHALL DRIVE ROADBED OVER A TRIBUTARY OF THE BEAUFORT RIVER. NO ADDITIONAL DRAINAGE STRUCTURES WILL BE INSTALLED.

THE SITE CONNECTS THE TWO ROADWAY EMBANKMENTS CONSISTING OF GRASSY LANDSCAPED AREAS. WEB SOIL SURVEY WAS USED TO DETERMINE THE SOIL CONDITIONS AT THIS SITE. THE SOILS ARE PREDOMINANTLY SANDY SOILS.

THE SEDIMENT CONTROL PLAN INCLUDES FOLLOWING THE EROSION CONTROL NOTES AND SEQUENCE OF CONSTRUCTION BY PLACING SILT FENCE AROUND THE PERIMETER AND PLACING WEIGHTED TYPE F INLET TUBES AT ALL ADJACENT INLETS.

SEQUENCE OF CONSTRUCTION

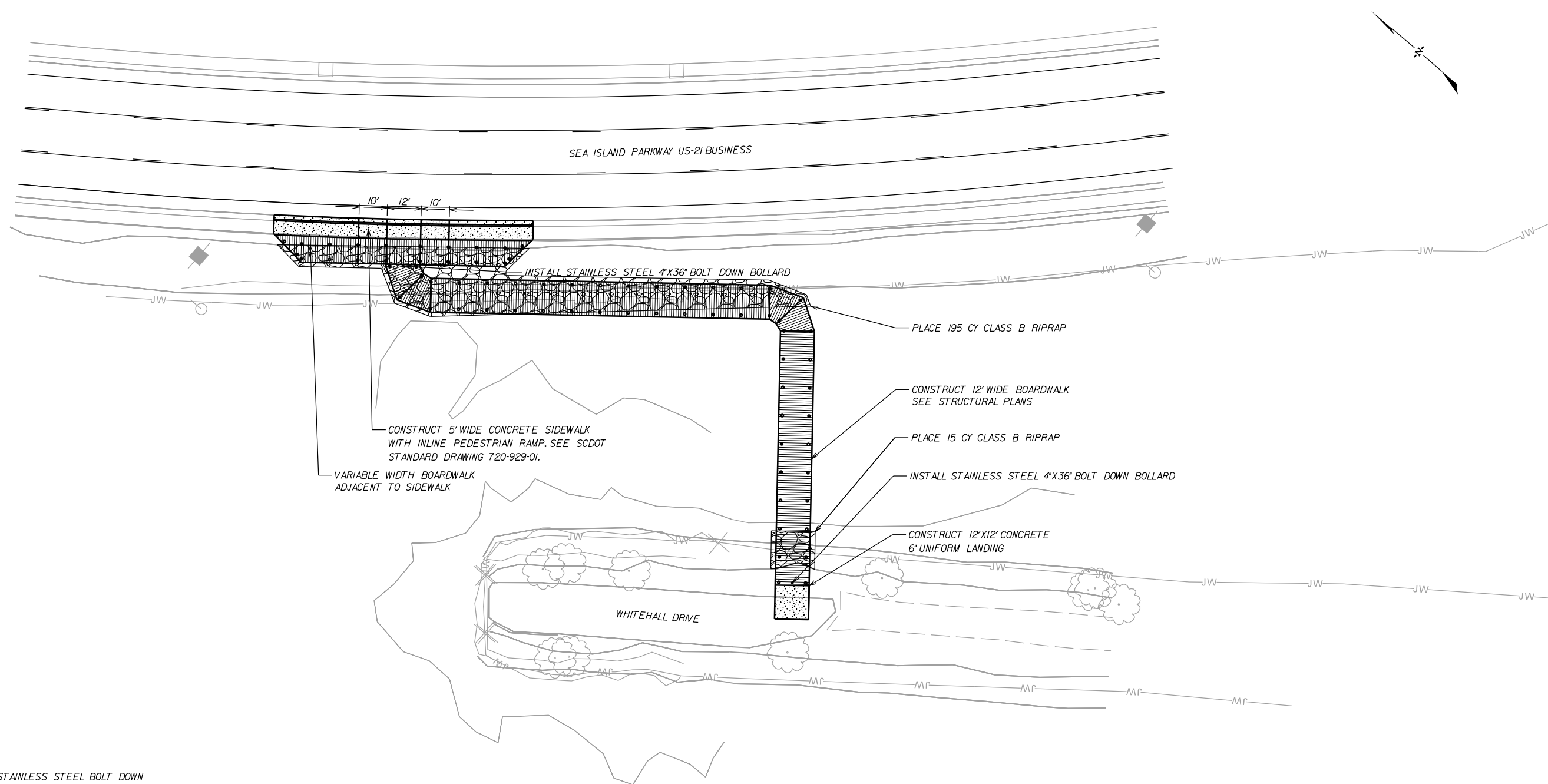
1. OBTAIN NPDES COVERAGE FROM DHEC AND FINAL MS4 APPROVAL FROM THE CITY OF BEAUFORT DEPARTMENT OF PUBLIC WORKS.
2. NOTIFY SC DHEC REGIONAL OFFICE AND THE CITY OF BEAUFORT DEPARTMENT OF PUBLIC WORKS 48 HOURS PRIOR TO ANY LAND DISTURBING ACTIVITIES.
3. INSTALL TREE PROTECTION AND DELINEATE CLEARING LIMITS.
4. CLEARING & GRUBBING ONLY AS NECESSARY FOR INSTALLATION OF PERIMETER CONTROLS (E.G. SILT FENCE).
5. INSTALL PERIMETER CONTROLS (E.G. SILT FENCE).
6. PROVIDE SITE DRAINAGE WITH DIVERSION DITCHES, SWALES AND DRAINS.
7. CLEARING AND GRUBBING OF SITE (SEDIMENT & EROSION CONTROL MEASURES FOR THESE AREAS MUST ALREADY BE INSTALLED).
8. STRIP TOP SOIL AND STOCKPILE FOR LATER USE ON SHOULDERS AND SLOPES PER SECTION 209 OF THE STANDARD SPECIFICATIONS. ALL DISTURBED AREA (ANY AREA OF LAND THAT WILL BE DISTURBED DURING CONSTRUCTION, THAT INCLUDES CLEARING, GRUBBING, STOCK PILING AND INSTALLATION OF ANY BMPs (SILT FENCE, SWALES, CHECK DAMS, ETC) MUST BE INCLUDED WITHIN THE LIMITS OF DISTURBANCE.
9. ROUGH GRADING.
10. FINE GRADING.
11. CONSTRUCT CURB & GUTTER.
12. CONSTRUCT SIDEWALK.
13. FINISH GRADING AND FINAL GRASSING AND LANDSCAPING.
14. MAINTAIN ALL SEDIMENT AND EROSION CONTROL DEVICES FOR THE EXTENT OF THE PROJECT.
15. REMOVAL OF SEDIMENT CONTROLS AFTER SITE HAS BEEN STABILIZED.
16. CONTACT THE CITY OF BEAUFORT DIRECTOR OF PROJECTS & PUBLIC FACILITIES.
17. FILE NOTICE OF TERMINATION.

11/15/2024 10:58 AM
 11/15/2024 10:58 AM
 11/15/2024 10:58 AM



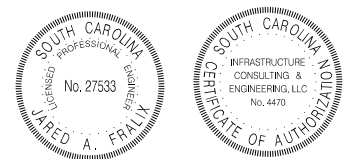
4				
3				
2				
1				
REV. NO.	BY	DATE	DESCRIPTION OF REVISION	
DESIGNED BY:	TKC	DATE		
DRAWN BY:	TKC	DATE		
CHECKED BY:	JAF	DATE		

BEAUFORT COUNTY CITY OF BEAUFORT	
WHITEHALL DRIVE BOARDWALK GENERAL CONSTRUCTION NOTES	
SHEET 5	SCALE: NTS



NOTES:

- 1) BOLLARDS TO BE 4"X36" STAINLESS STEEL BOLT DOWN BY POST GUARD, OR APPROVED EQUAL.
- 2) SIDEWALK RAMP TO BE CONSTRUCTED FOR BICYCLE ACCESS. DO NOT INSTALL DETECTABLE WARNING MATERIAL.



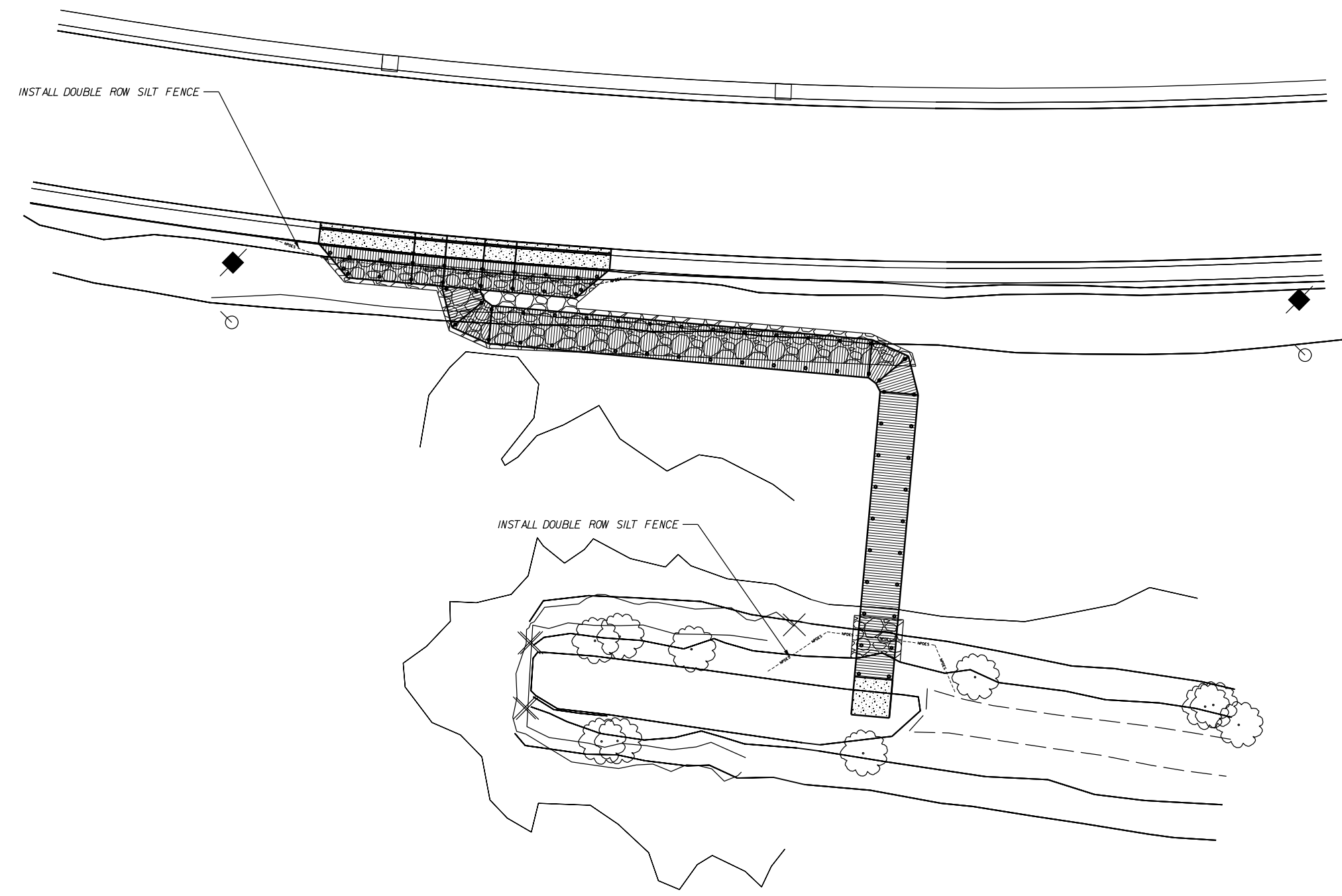
4				
3				
2				
1				
REV. NO.	BY	DATE	DESCRIPTION OF REVISION	
DESIGNED BY:		DATE		
DRAWN BY:		DATE		
CHECKED BY:	JAF	DATE		

BEAUFORT COUNTY
CITY OF BEAUFORT

WHITEHALL DRIVE BOARDWALK

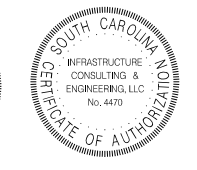
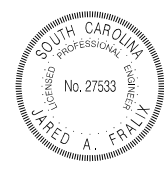
SHEET 6 SCALE: 1"=20'

STATE	COUNTY	FILE NO.	PROJECT NO.	ROUTE NO.	SHEET NO.
SC	BEAUFORT			US-21 BUS	EC1



LEGEND	
	TYPE F INLET FILTERS (NON-WEIGHTED DURING CONSTRUCTION. WEIGHTED ONCE BASE COURSE IS PLACED.)
	SILT FENCE

JE INFRASTRUCTURE
CONSULTING & ENGINEERING

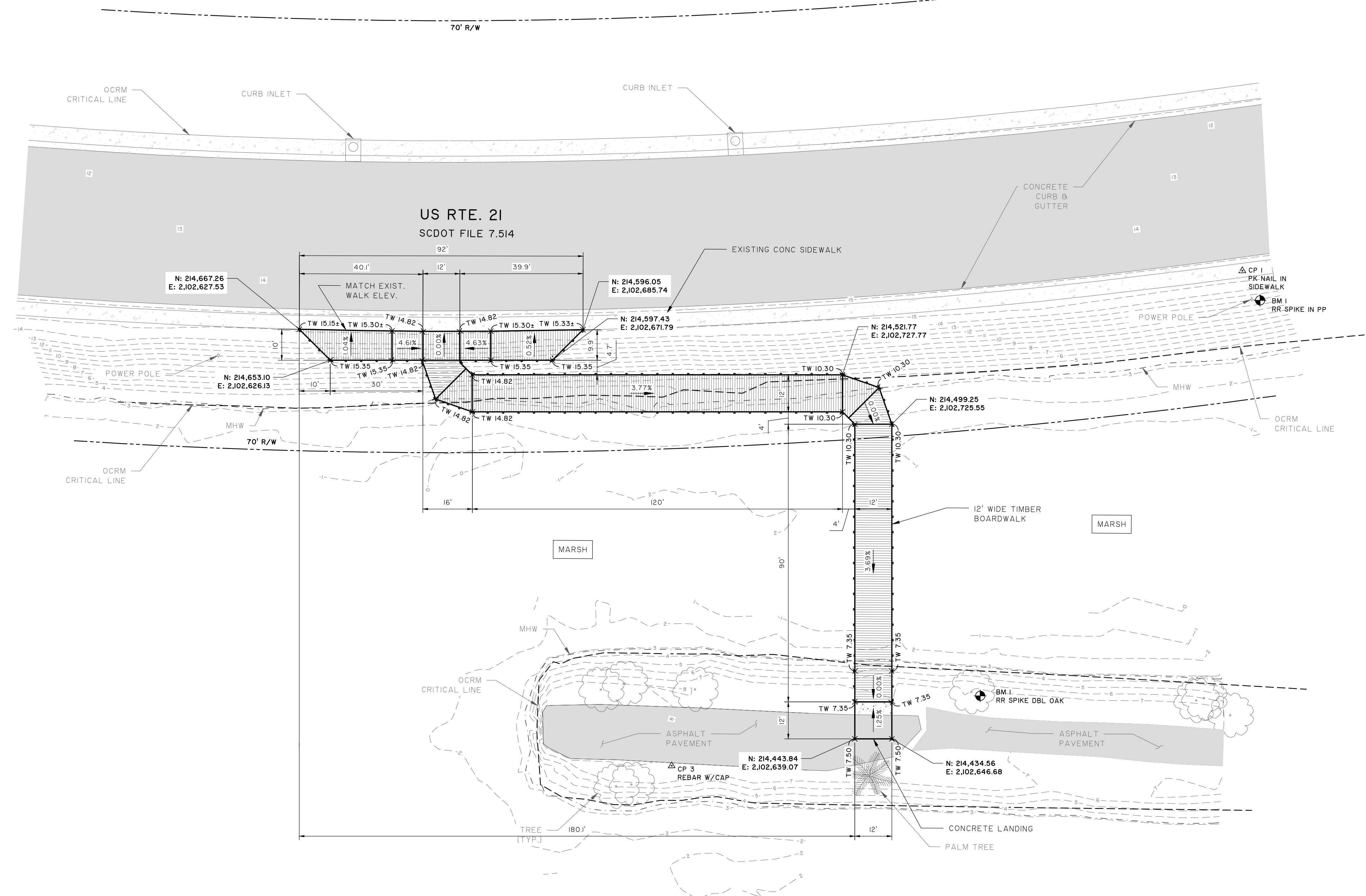
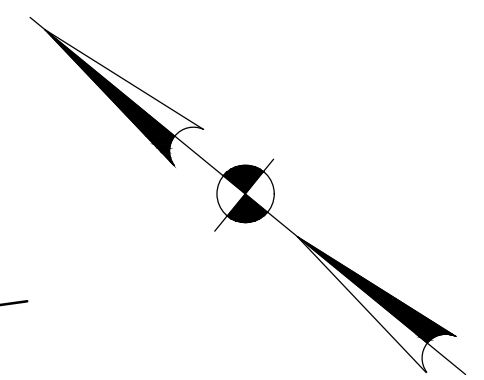


4			
3			
2			
1			
REV. NO.	BY	DATE	DESCRIPTION OF REVISION
DESIGNED BY:		DATE	
DRAWN BY:		DATE	
CHECKED BY:	JAF	DATE	

BEAUFORT COUNTY
CITY OF BEAUFORT

WHITEHALL DRIVE BOARDWALK
EROSION CONTROL SHEET

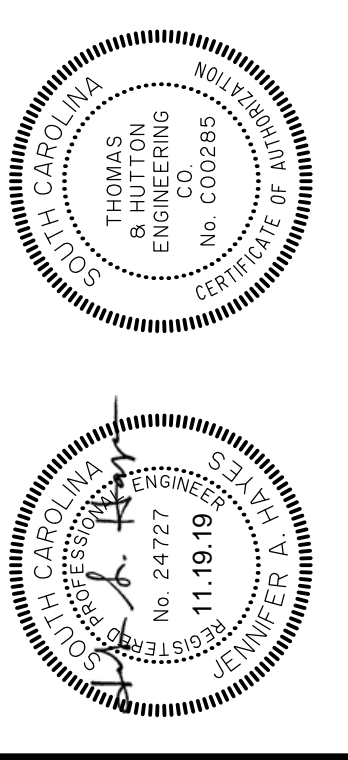
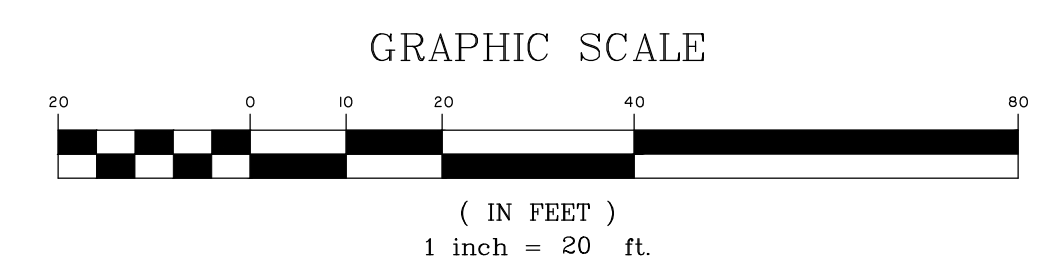
2127760.000000 Engineering/Overseer/Construction Plans/2127760.0000 - S1.0 Plan - Rev. 02 - 11/19/2019



CONTROL POINT TABLE				
CP	ELEVATION	NORTHING	EASTING	DESCRIPTION
1	15.434	214442.9285	2102836.040	PK NAIL IN SIDEWALK JOINT
2	15.362	214801.0447	2102535.348	PK NAIL IN SIDEWALK JOINT
3	7.651	214484.1973	2102594.674	REBAR WITH CAP

BENCHMARK TABLE			
BM	ELEVATION	DATUM	DESCRIPTION
1	14.402	NAVD88	RAILROAD SPIKE IN SCE&G PP 651507
2	8.456	NAVD88	RAILROAD SPIKE IN DOUBLE OAK TREE

1 BOARDWALK SITE PLAN
S1.0 1" = 20'



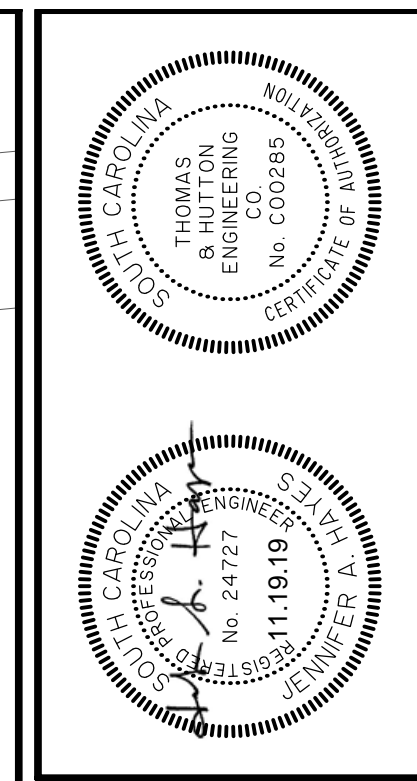
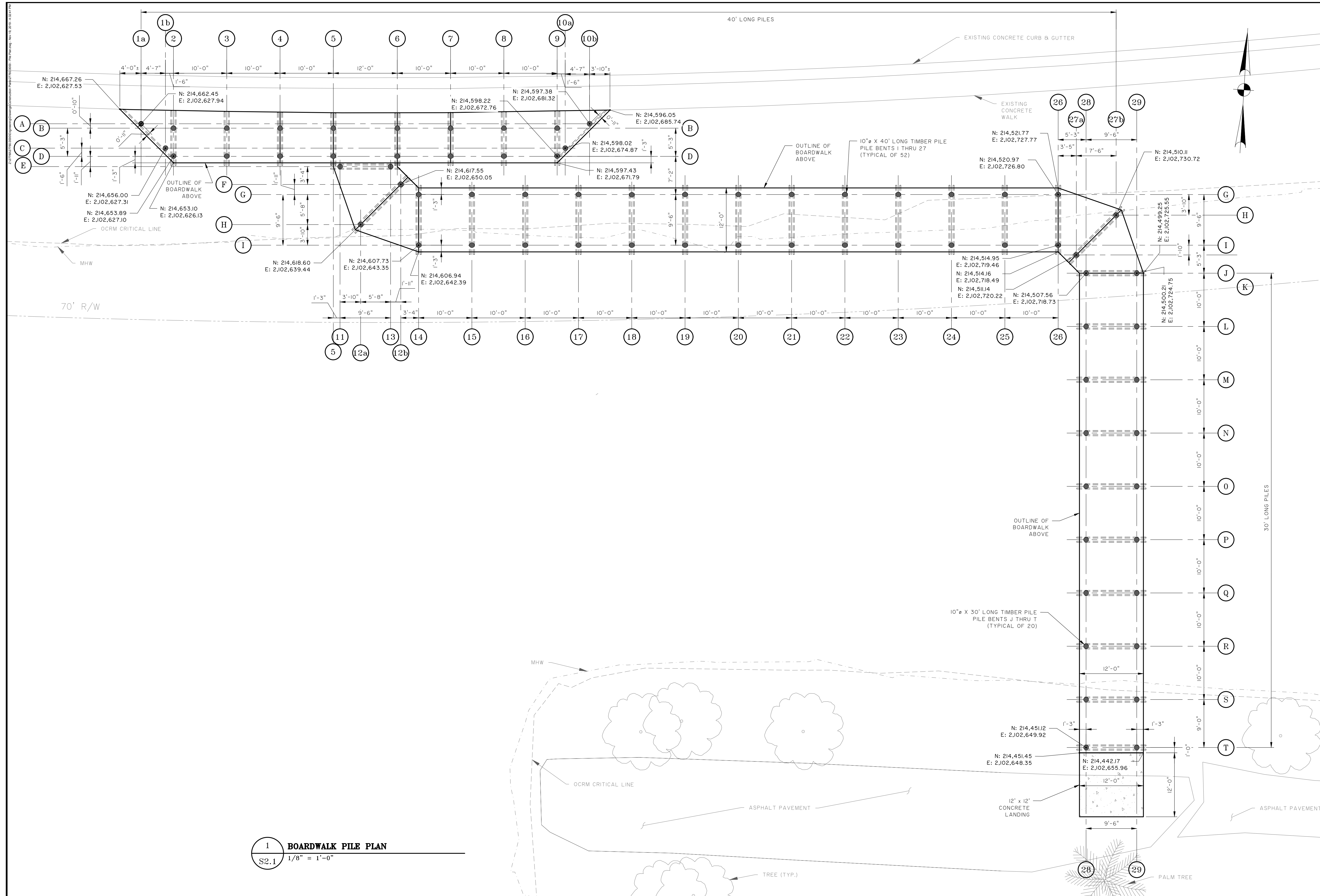
NO.	REVISIONS	BY	DATE

THOMAS & HUTTON
 682 Johnnie Dodds Blvd. • Suite 100
 Mt. Pleasant, SC 29464 • 843.849.0200
 www.thomasandhutton.com

CITY OF BEAUFORT
 BEAUFORT COUNTY, SC
WHITEHALL PARK BOARDWALK
BOARDWALK SITE PLAN

JOB NO:	J-27760.0000
DATE:	11/19/2019
DRAWN:	RAS
DESIGNED:	JAH
REVIEWED:	JAH
APPROVED:	JAH
SCALE:	1" = 20'

S1.0



NO.	REVISIONS	BY	DATE

THOMAS & HUTTON
 682 Johnnie Dodds Blvd. • Suite 100
 Mt. Pleasant, SC 29464 • 843.849.0200
 www.thomasandhutton.com

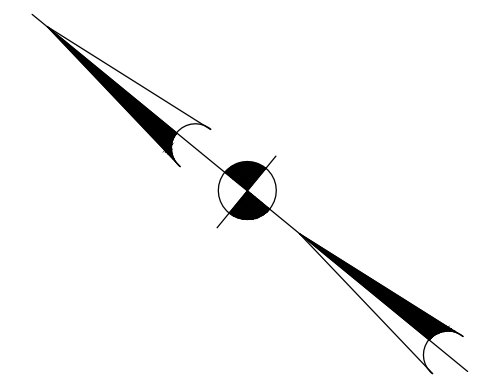
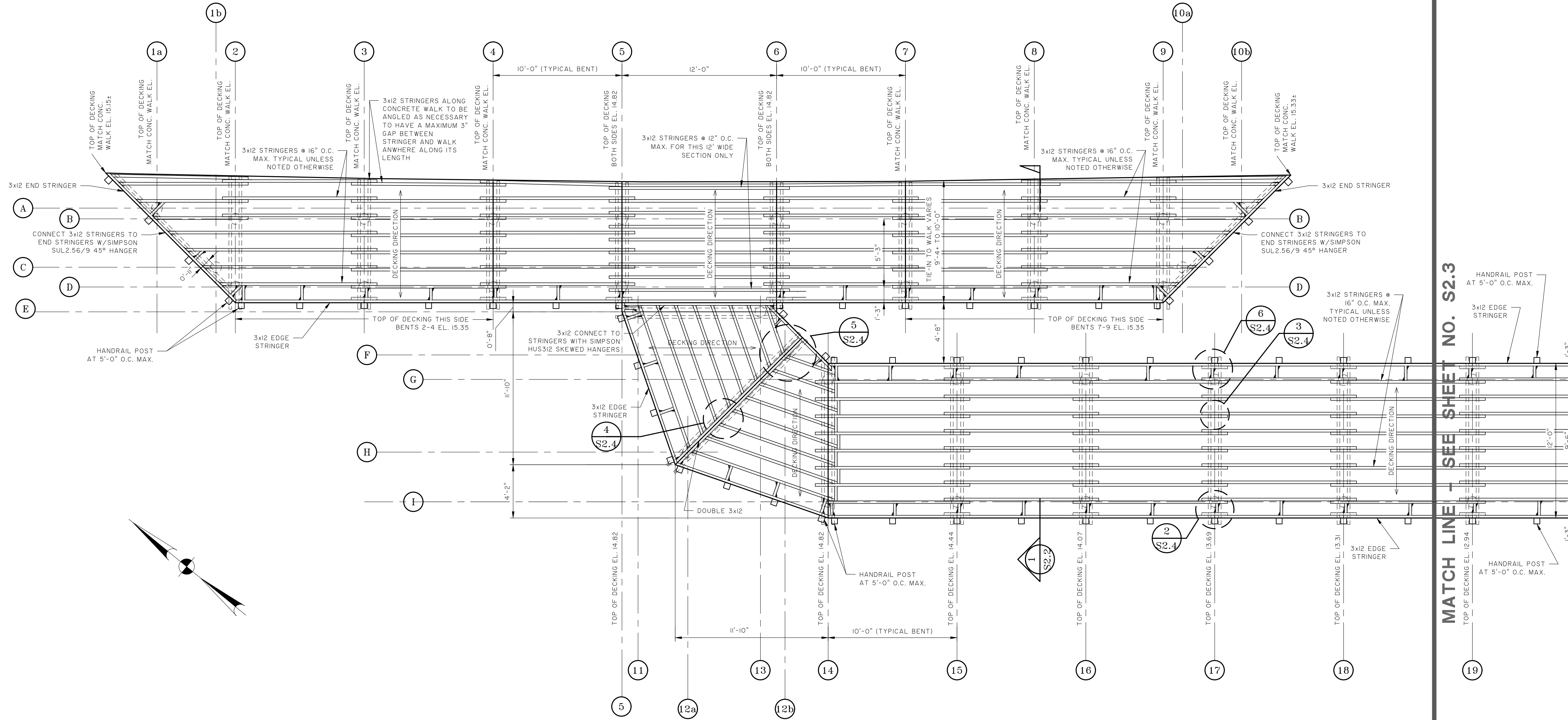
CITY OF BEAUFORT
 BEAUFORT COUNTY, SC
WHITEHALL PARK BOARDWALK
BOARDWALK PILE PLAN

JOB NO.:	J-27760.0000
DATE:	11/19/2019
DRAWN:	RAS
DESIGNED:	JAH
REVIEWED:	JAH
APPROVED:	JAH
SCALE:	1/8" = 1'-0"

S.2.1

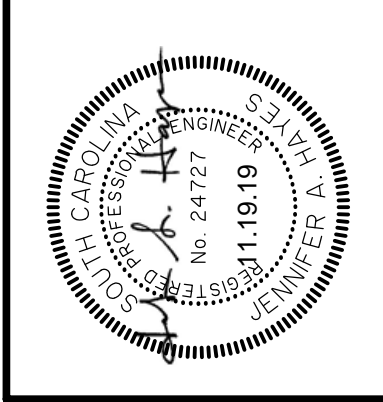
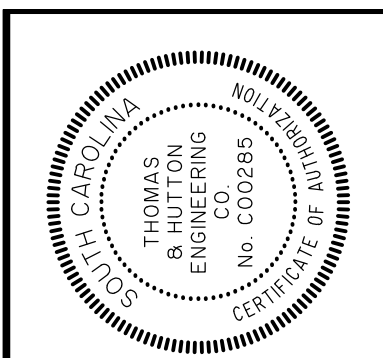
1 BOARDWALK PILE PLAN
 S2.1 1/8" = 1'-0"

2/27/2019 10:00 AM Engineering/Design/Construction/Projects/27760.0000 - Framing Plan No. 19 - 11/19/2019



MATCH LINE - SEE SHEET NO. S2.3

1 PARTIAL BOARDWALK FRAMING PLAN
S2.2 1/4" = 1'-0"



NO.	REVISIONS	BY	DATE

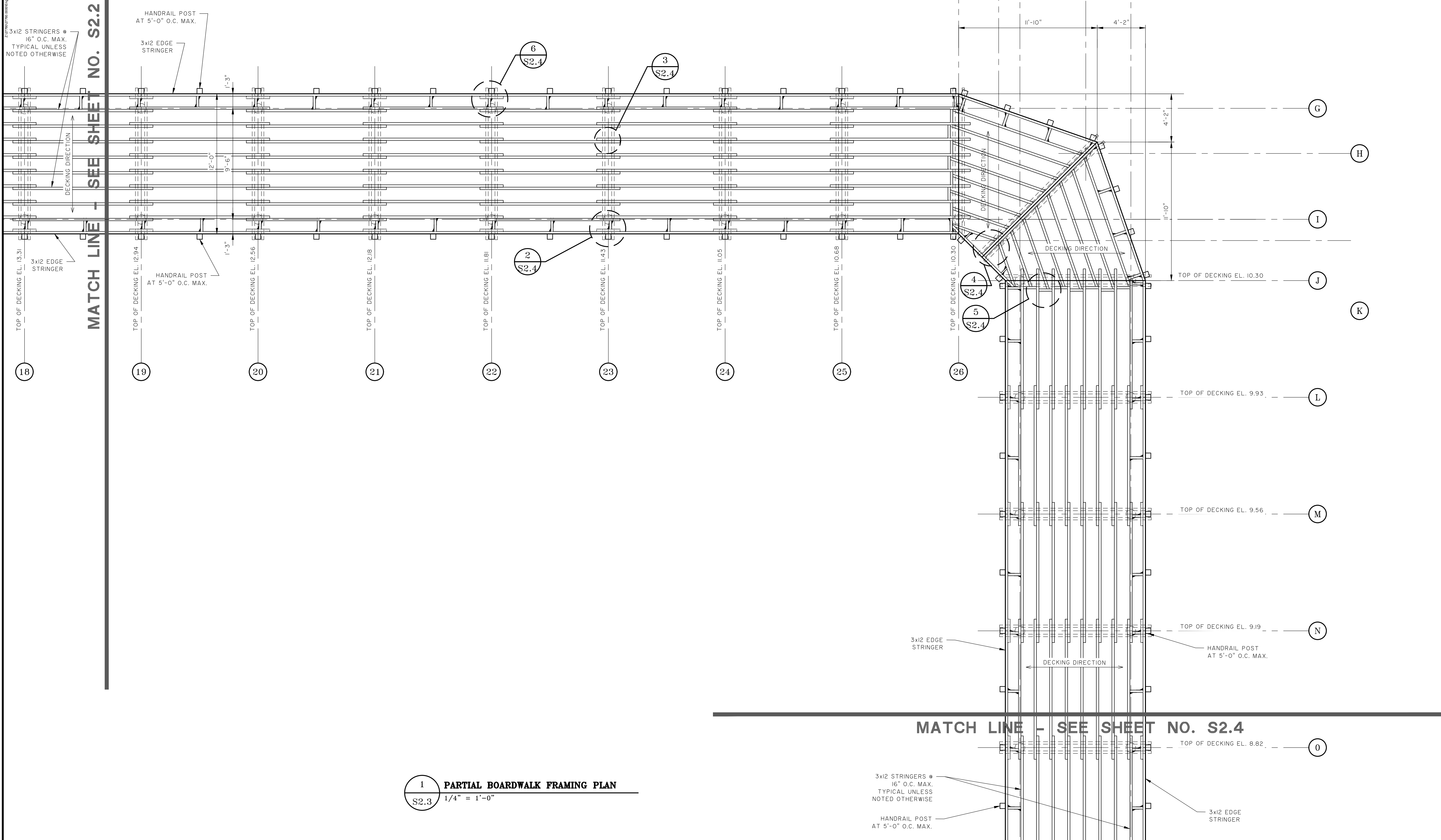
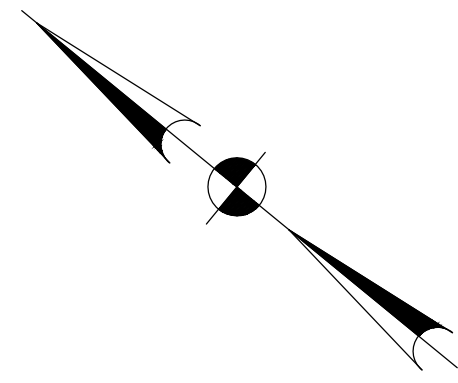
THOMAS & HUTTON
 682 Johnnie Dodds Blvd. • Suite 100
 Mt. Pleasant, SC 29464 • 843.849.0200
 www.thomasandhutton.com

CITY OF BEAUFORT
 BEAUFORT COUNTY, SC
 WHITEHALL PARK BOARDWALK
 PARTIAL BOARDWALK FRAMING PLAN

JOB NO.	J-27760.0000
DATE	11/19/2019
DRAWN	RAS
DESIGNED	JAH
REVIEWED	JAH
APPROVED	JAH
SCALE	1/4" = 1'-0"

S2.2

J:\27760\27760-0000\Engineering\DWG\Boardwalk\Partial Boardwalk Framing Plan.dwg, Nov 19, 2019, 4:16:58 PM

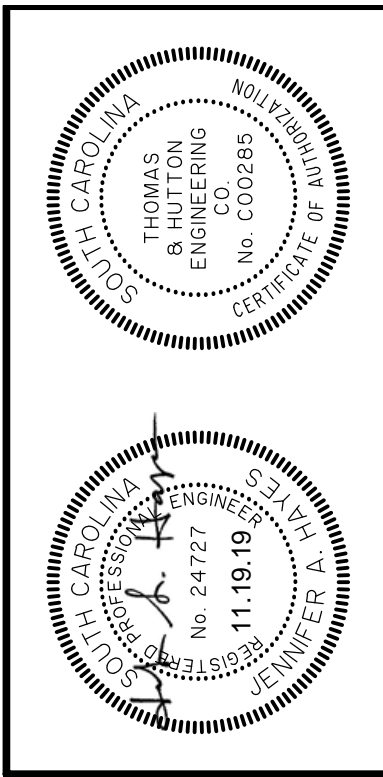


MATCH LINE - SEE SHEET NO. S2.2

MATCH LINE - SEE SHEET NO. S2.4

1 PARTIAL BOARDWALK FRAMING PLAN
S2.3 1/4" = 1'-0"

3x12 STRINGERS @ 16" O.C. MAX. TYPICAL UNLESS NOTED OTHERWISE
HANDRAIL POST AT 5'-0" O.C. MAX.
3x12 EDGE STRINGER



NO.	REVISIONS	BY	DATE

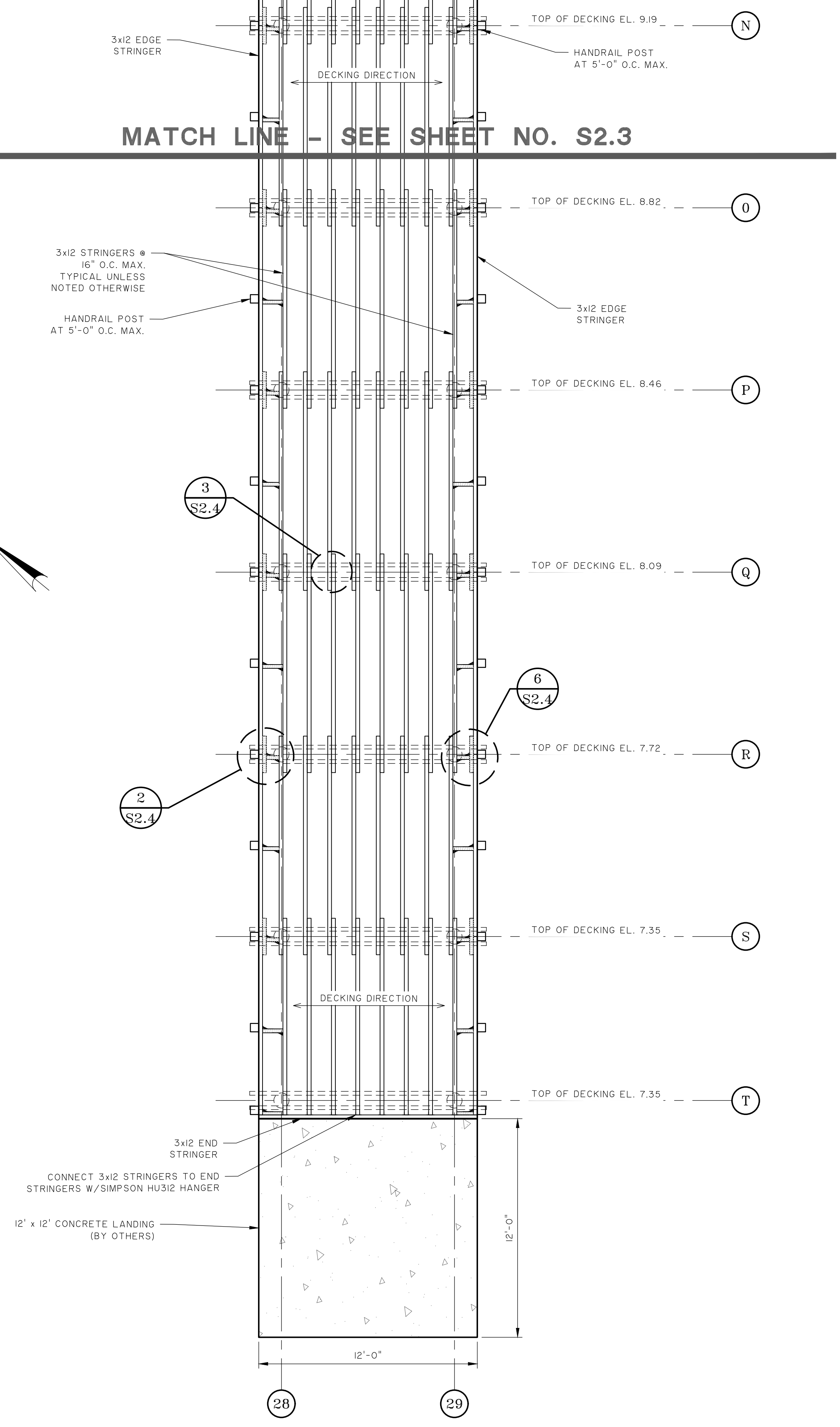
THOMAS & HUTTON
 682 Johnnie Dodds Blvd. • Suite 100
 Mt. Pleasant, SC 29464 • 843.849.0200
 www.thomasandhutton.com

CITY OF BEAUFORT
 BEAUFORT COUNTY, SC
 WHITEHALL PARK BOARDWALK
 PARTIAL BOARDWALK FRAMING PLAN

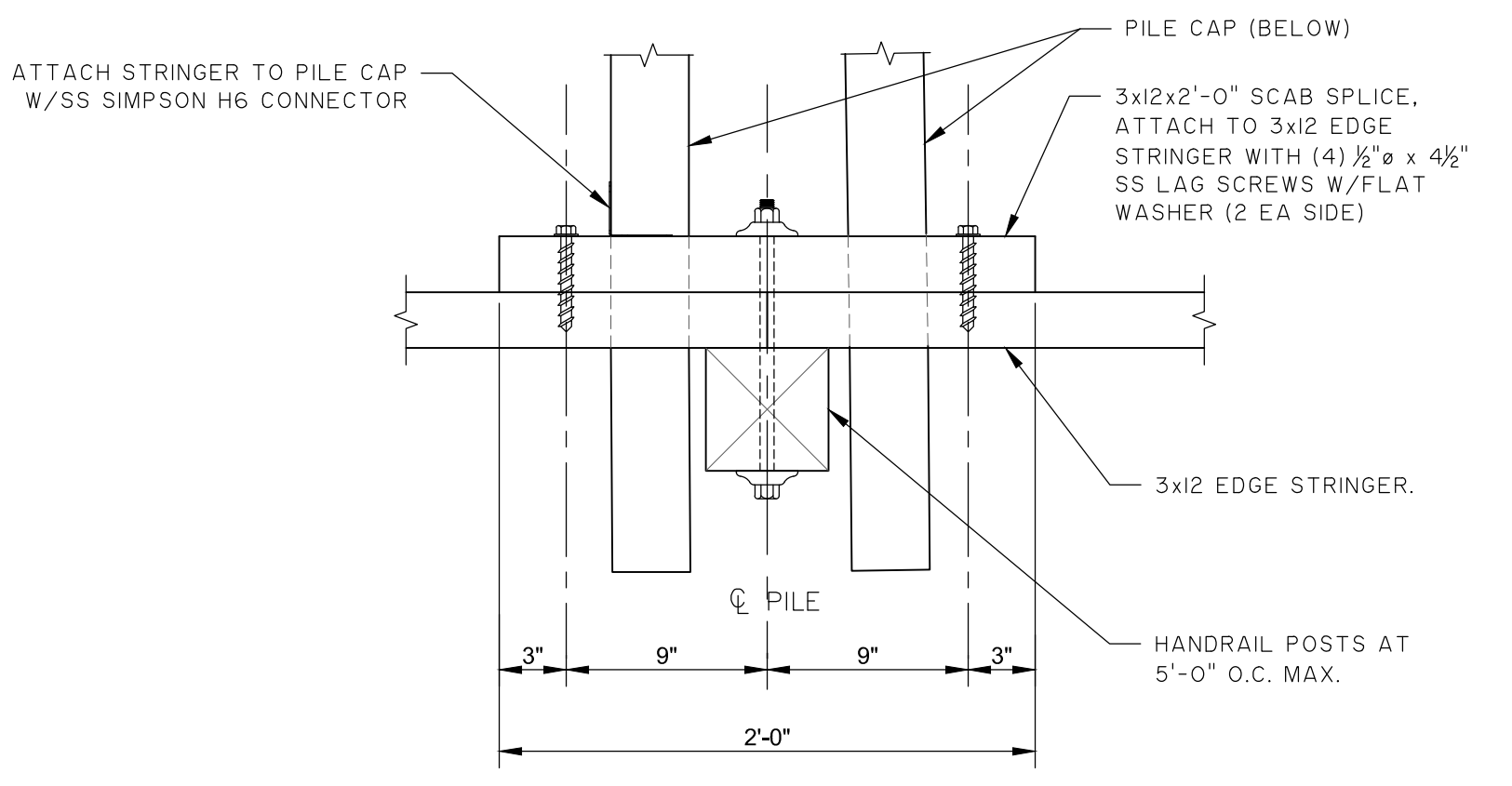
JOB NO.	J-27760-0000
DATE	11/19/2019
DRAWN	RAS
DESIGNED	JAH
REVIEWED	JAH
APPROVED	JAH
SCALE	1/4" = 1'-0"

S2.3

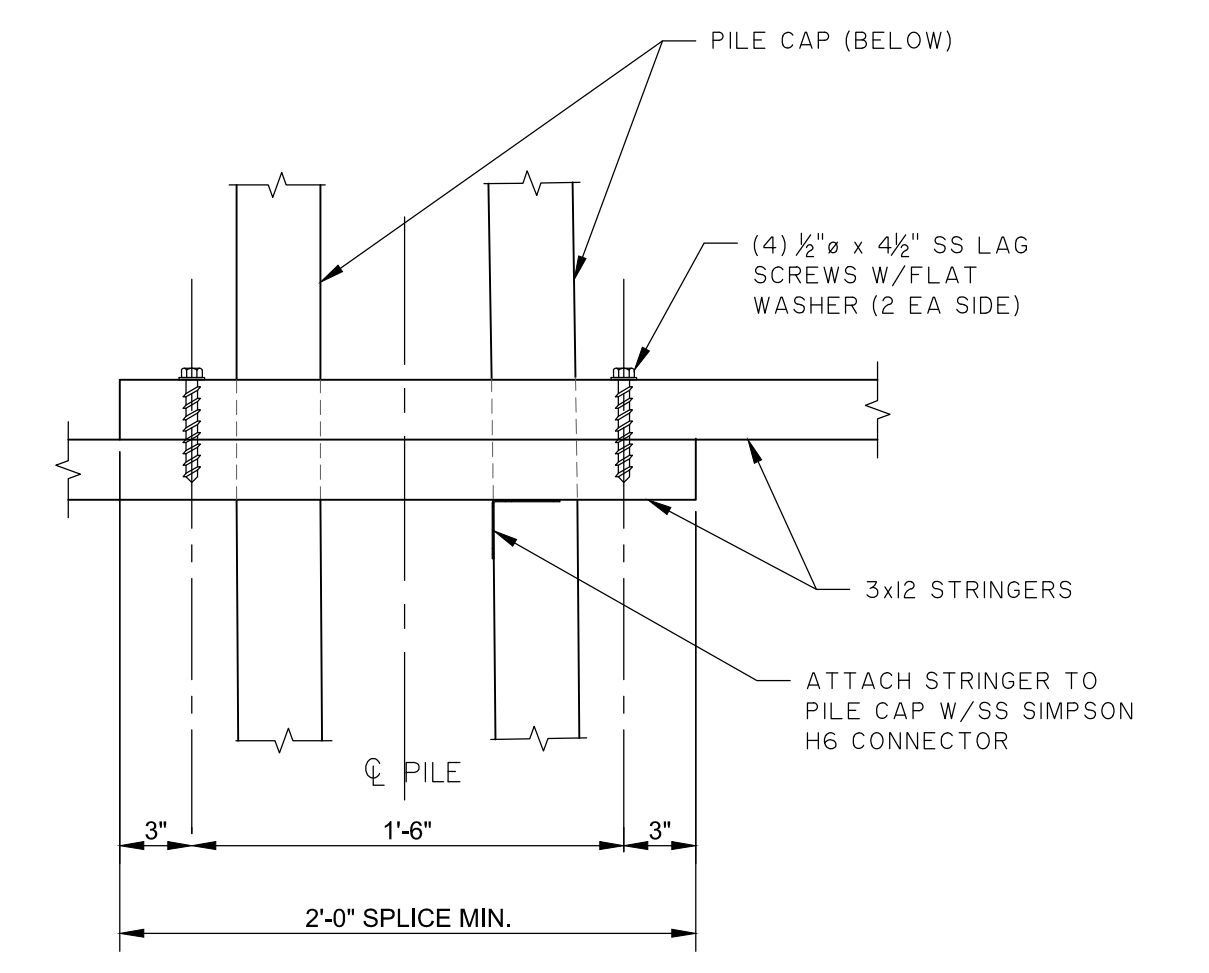
2/27/2019 11:00 AM Engineering/Design/Drawings/Projects/27760.000 - Framing Plan No. 19 - 11/19/2019



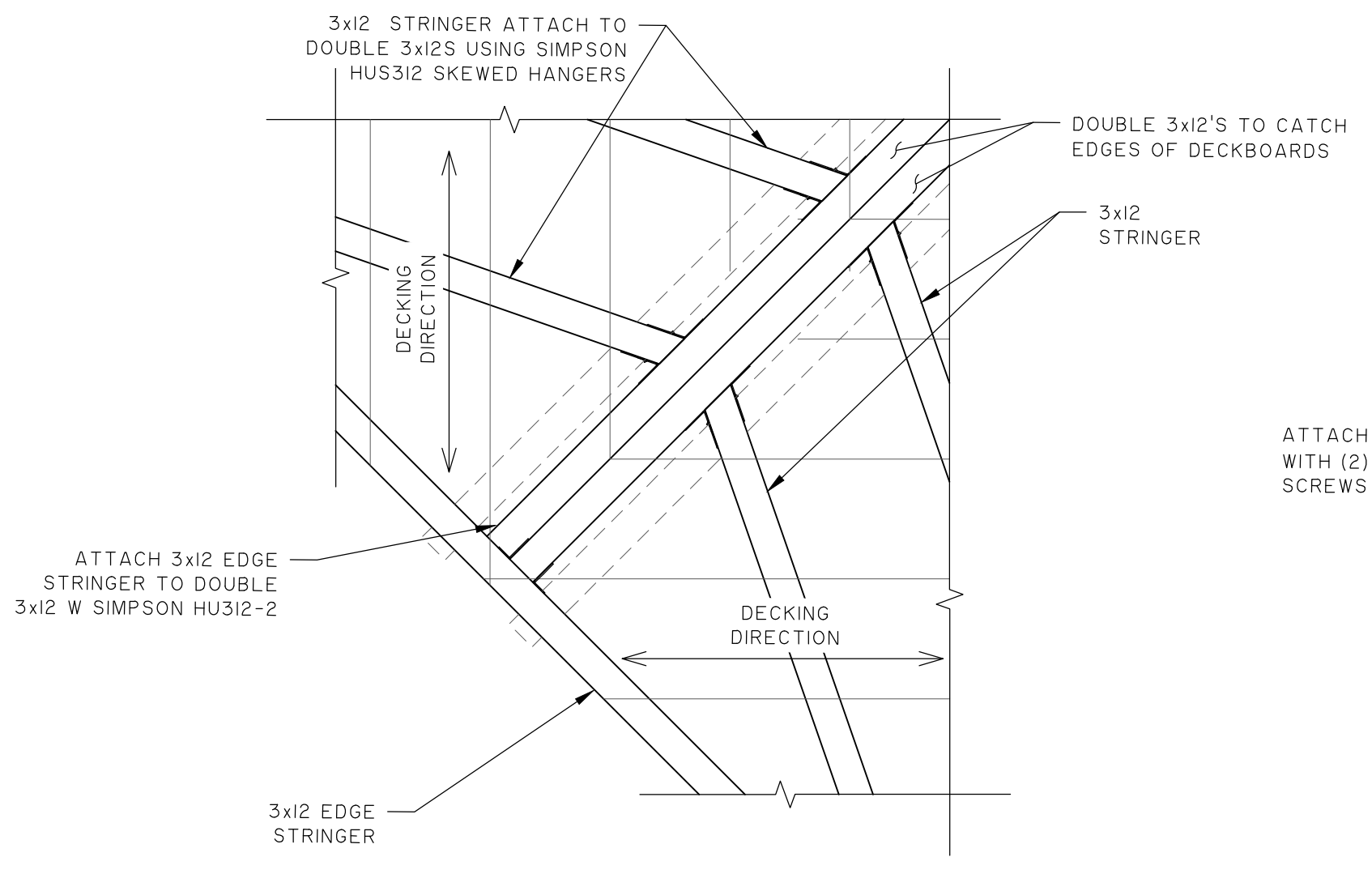
1 PARTIAL BOARDWALK FRAMING PLAN
S2.4 1/4" = 1'-0"



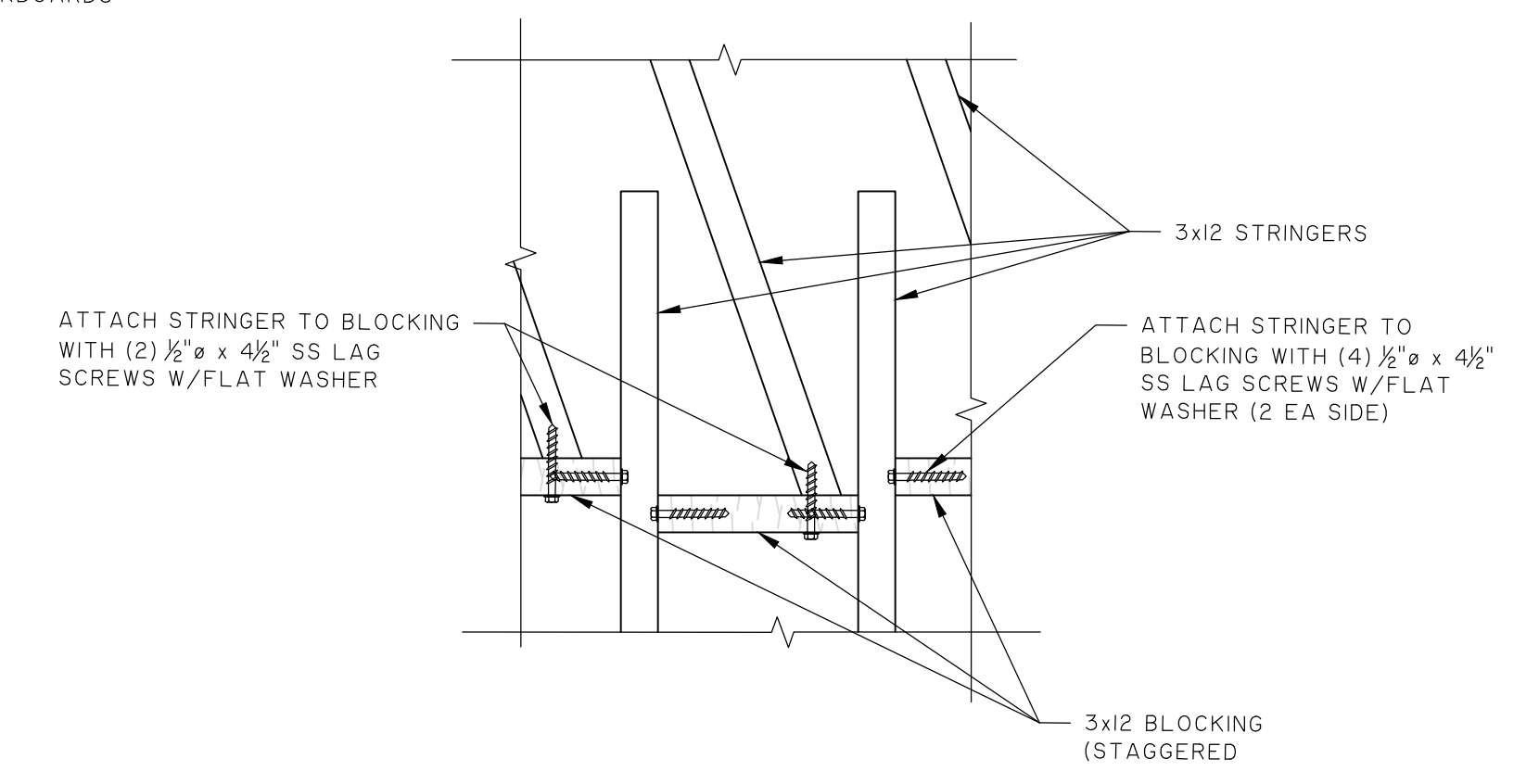
2 TYPICAL EDGE STRINGER AT HANDRAIL POST
S2.4 1-1/2" = 1'-0"



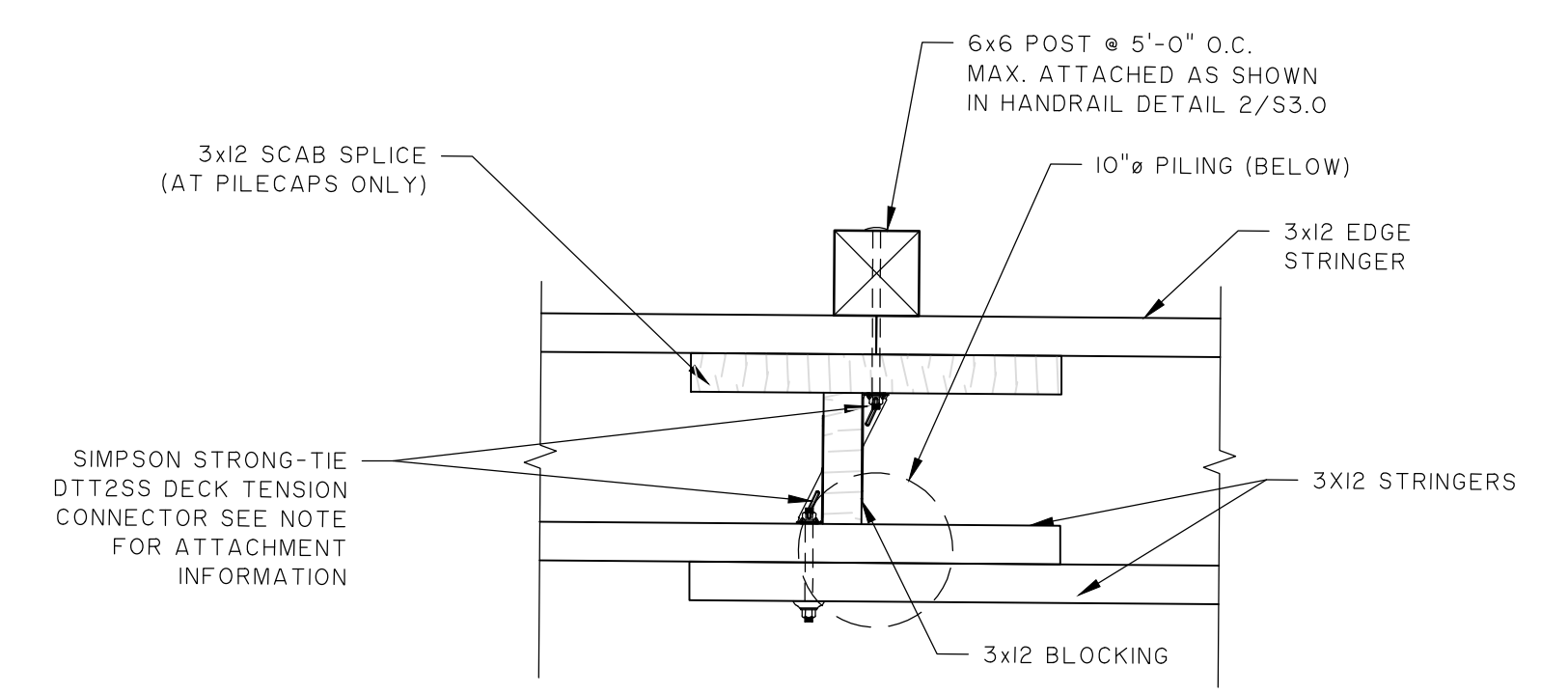
3 TYPICAL STRINGER SPLICE
S2.4 1-1/2" = 1'-0"



4 FRAMING DETAIL
S2.4 1" = 1'-0"

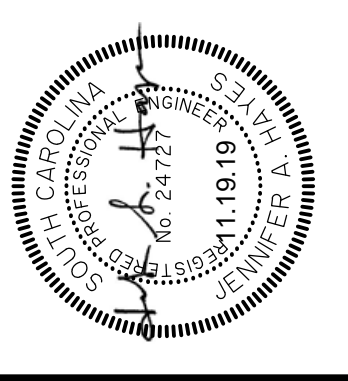
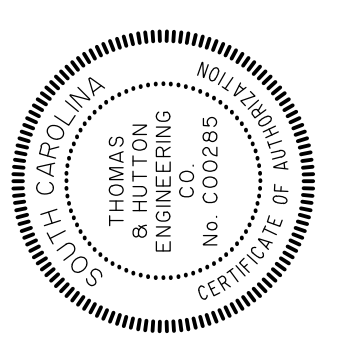


5 FRAMING DETAIL
S2.4 1" = 1'-0"



6 HANDRAIL POST ANCHORAGE
S2.4 1" = 1'-0"

NOTE: THE SIMPSON STRONG-TIE DTT2SS DECK TENSION CONNECTORS ARE TO BE ATTACHED TO STRINGERS AND/OR BLOCKING WITH (8) 1/4" x 1.5" SDS SCREWS, PER MANUFACTURER'S RECOMMENDATIONS AND AS NOTED IN THE SECTIONS.



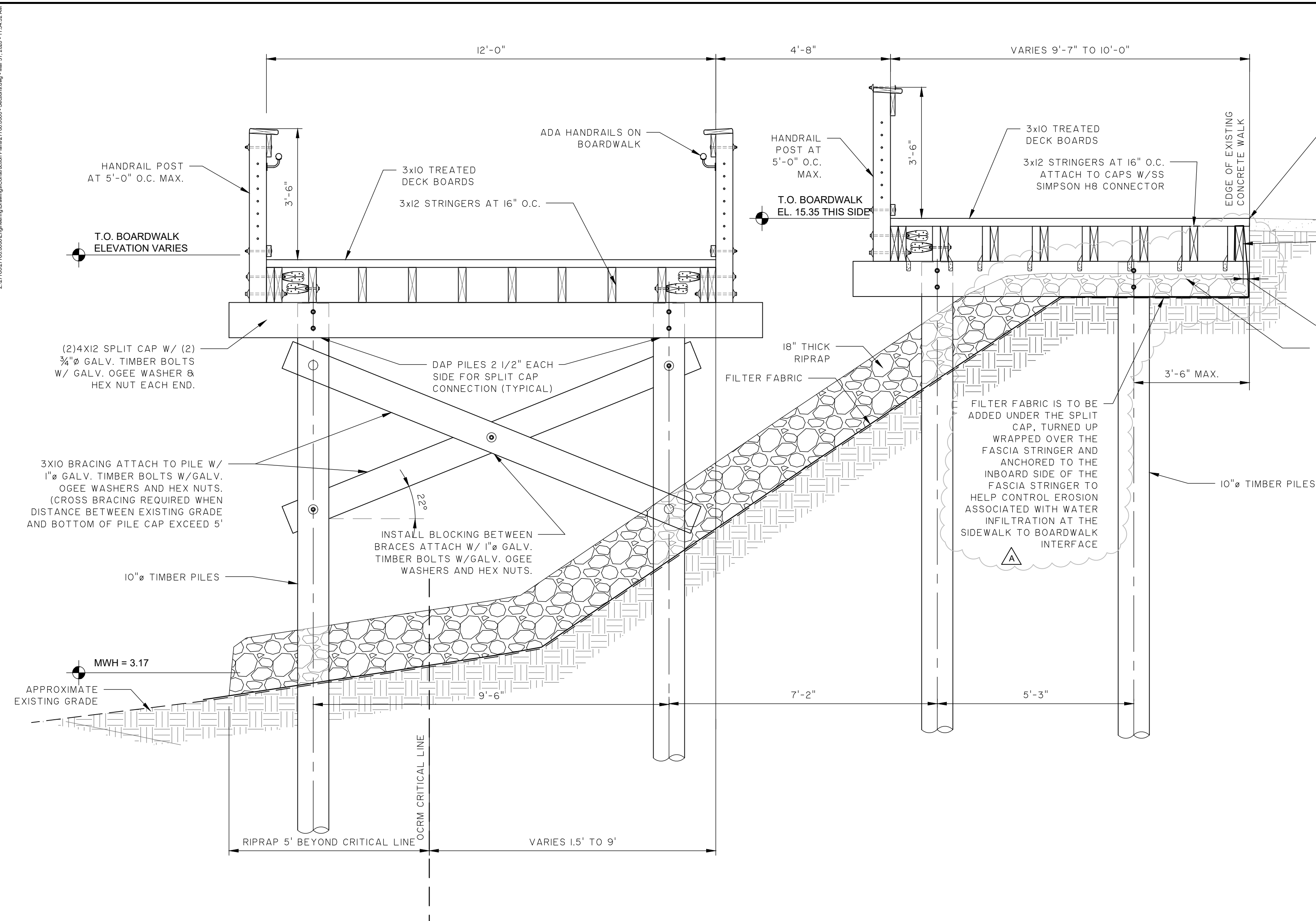
NO.	REVISIONS	BY	DATE

THOMAS & HUTTON
682 Johnnie Dodds Blvd. • Suite 100
Mt. Pleasant, SC 29464 • 843.849.0200
www.thomasandhutton.com

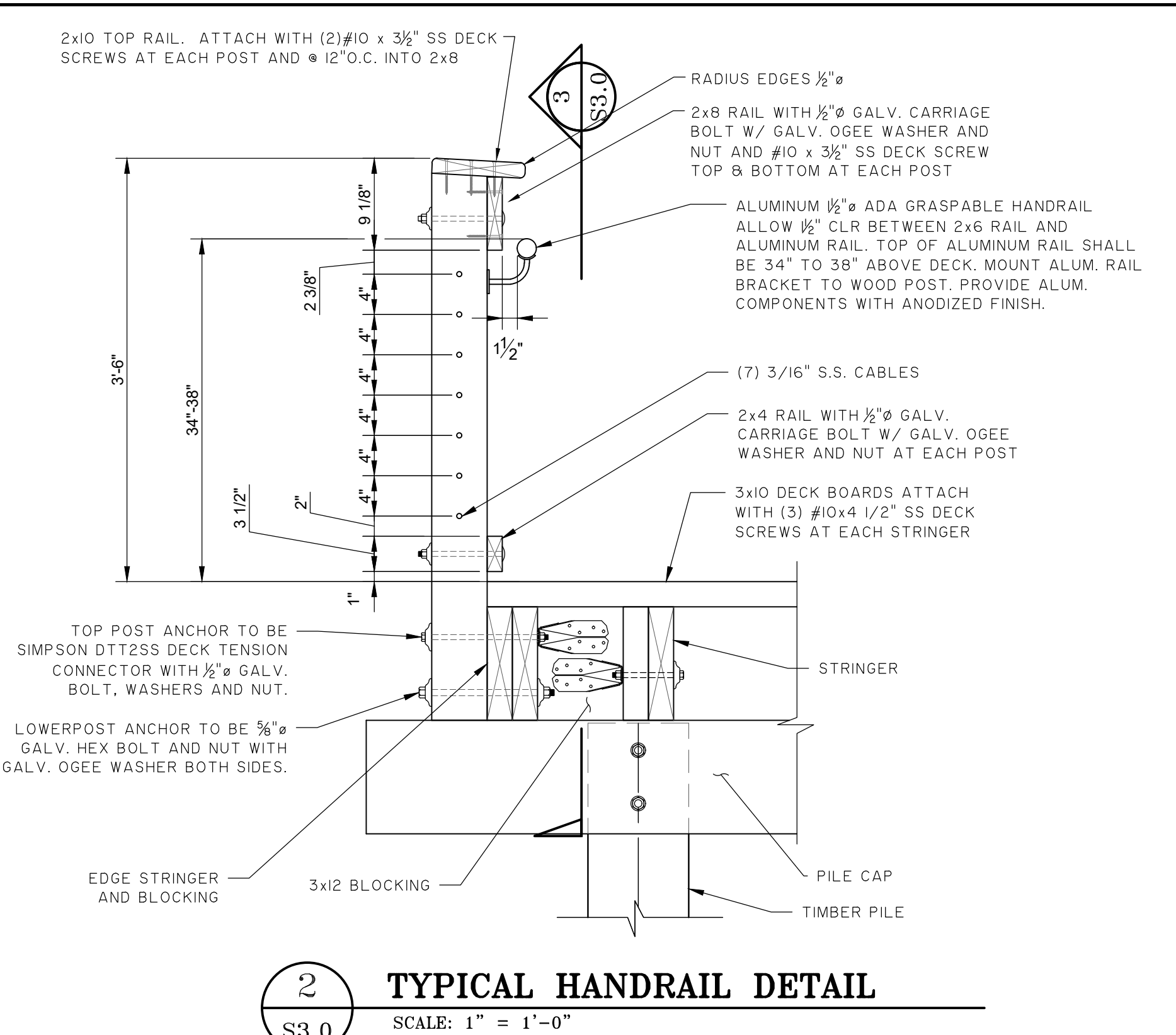
CITY OF BEAUFORT
BEAUFORT COUNTY, SC
WHITEHALL PARK BOARDWALK
PARTIAL BOARDWALK FRAMING PLAN

JOB NO.	J-27760.0000
DATE:	11/19/2019
DRAWN:	RAS
DESIGNED:	JAH
REVIEWED:	JAH
APPROVED:	JAH
SCALE:	AS NOTED

S2.4

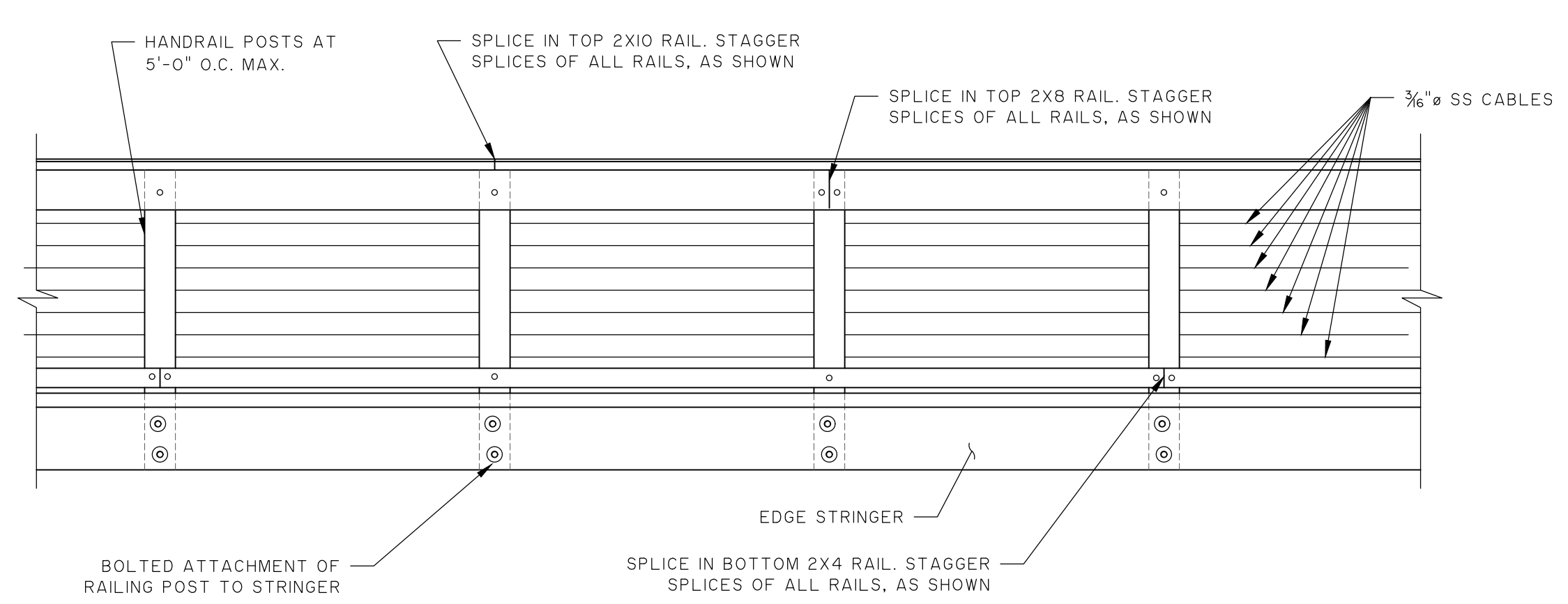


1 BOARDWALK SECTION
SCALE: 1/2" = 1'-0"

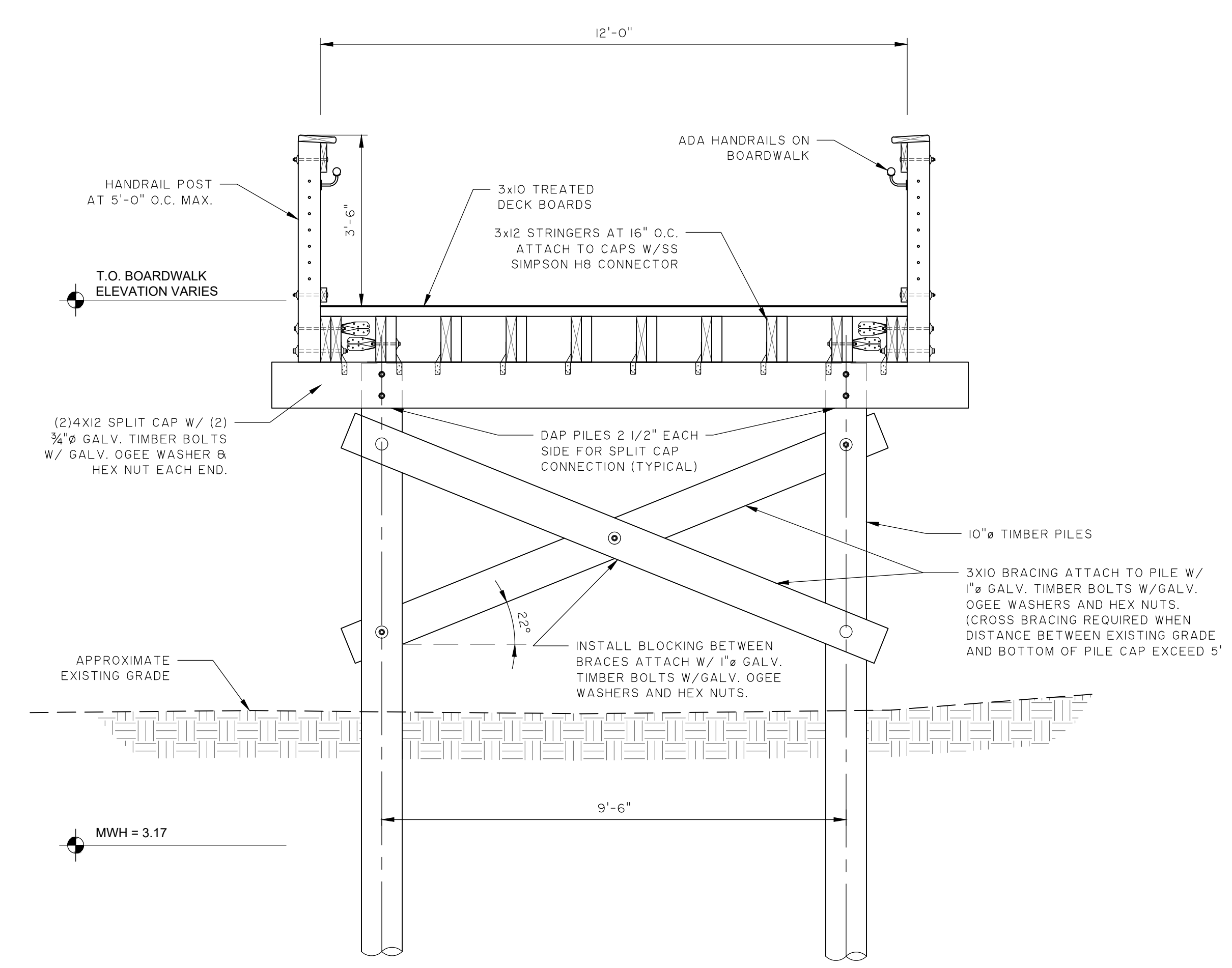


2 TYPICAL HANDRAIL DETAIL
SCALE: 1" = 1'-0"

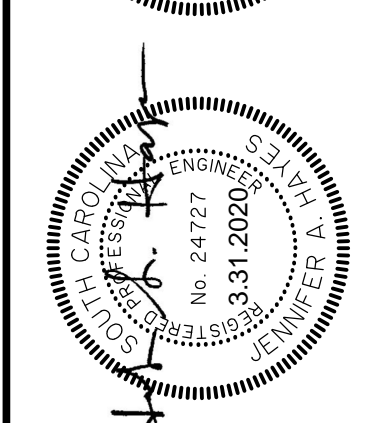
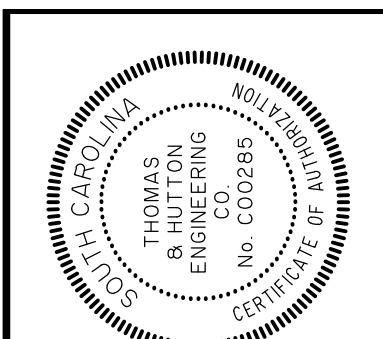
- NOTES:
- ALUMINUM RAIL SHALL HAVE A BRUSHED ANODIZED FINISH.
 - PROVIDE 180 DEGREE ENDS OF ADA RAIL AS REQUIRED BY CODE.
 - ADA RAIL SHALL BE CONTINUOUS ALONG FLAT PORTIONS OF BOARDWALK.
 - STAINLESS STEEL CABLE FOR HANDRAIL TO BE 316.



3 TYPICAL HANDRAIL ELEVATION
SCALE: 1/2" = 1'-0"



4 TYPICAL BOARDWALK SECTION
SCALE: 1/2" = 1'-0"



NO.	DATE	BY	REVISIONS

THOMAS & HUTTON
 682 Johnnie Dodds Blvd. • Suite 100
 Mt. Pleasant, SC 29464 • 843.849.0200
 www.thomasandhutton.com

CITY OF BEAUFORT
 BEAUFORT COUNTY, SC
WHITEHALL PARK BOARDWALK
BOARDWALK SECTIONS

JOB NO.:	J-27760.0000
DATE:	11/19/2019
DRAWN:	RAS
DESIGNED:	JAH
REVIEWED:	JAH
APPROVED:	JAH
SCALE:	AS NOTED

S3.0