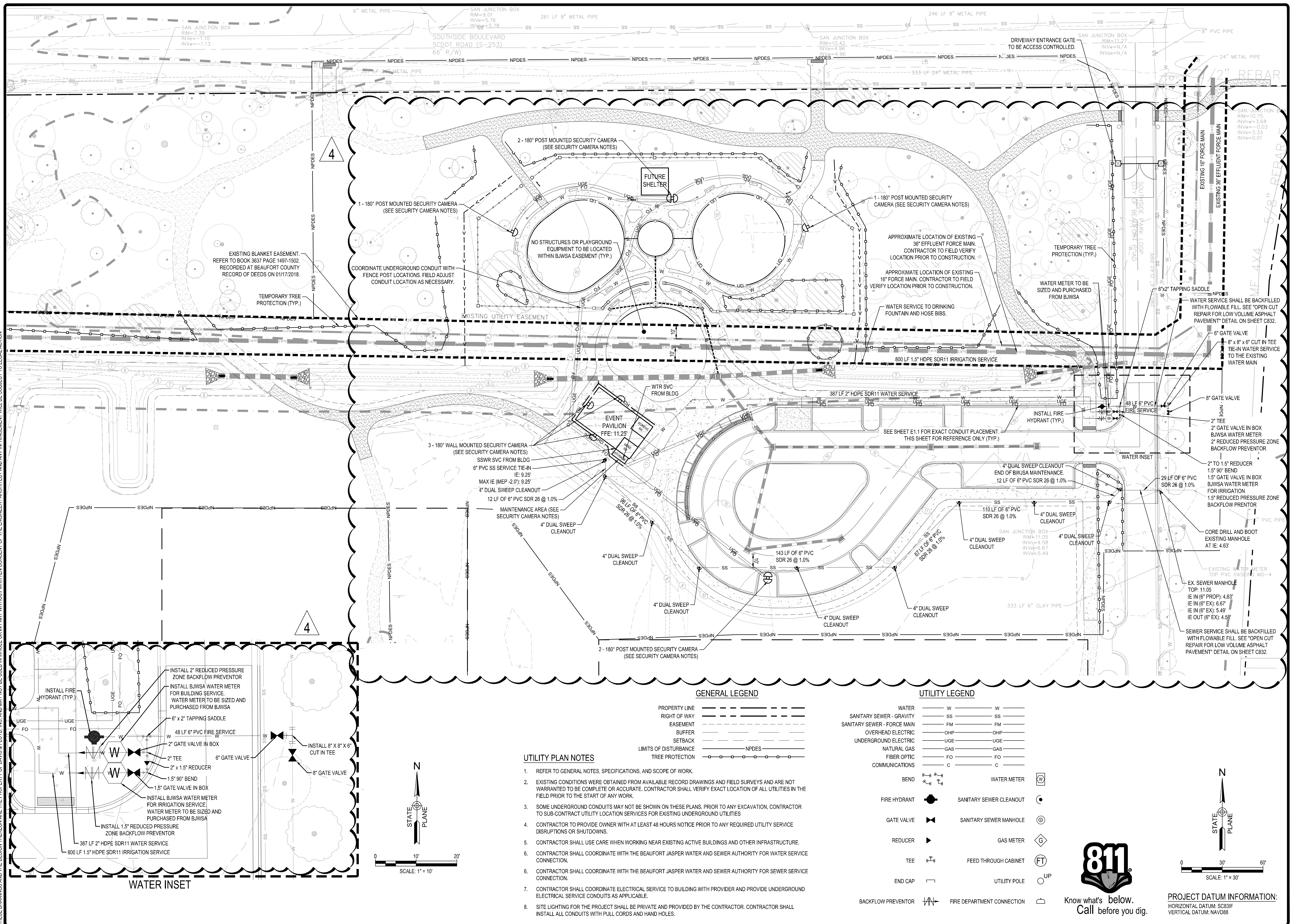


G:\Jobs\130224-00\Production\Civil\Drawings\030224-00-UTILITY.dwg, 11/7/2023 10:21:26 AM, brandon a. turk  
 THESE DRAWINGS AND THE DESIGN THEREON ARE THE PROPERTY OF DAVIS & FLOYD, INC. AND MAY NOT BE USED IN WHOLE OR IN PART WITHOUT WRITTEN CONSENT OF THE ENGINEER. ARCHITECT AND ANY INFRINGEMENT WILL BE SUBJECT TO LEGAL ACTION.

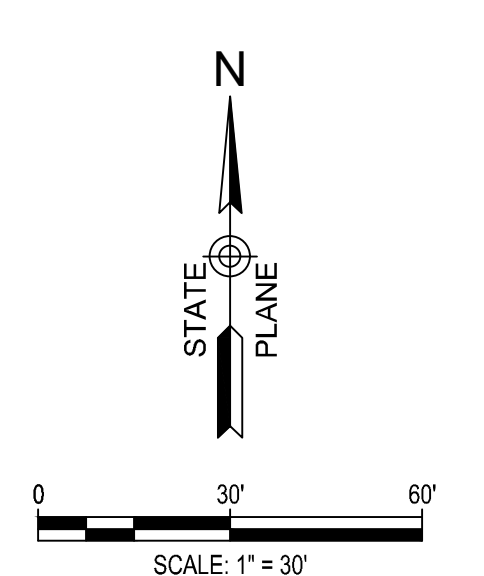
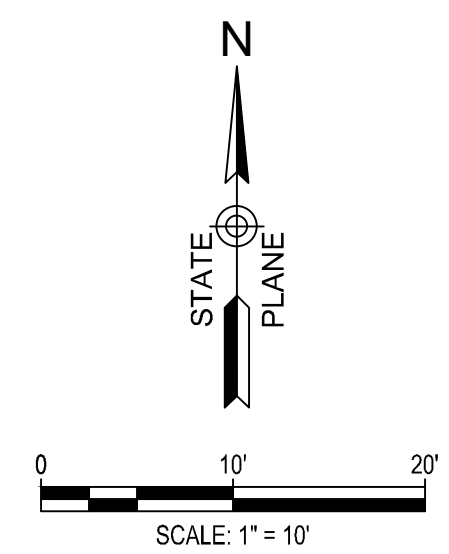


GENERAL LEGEND	
PROPERTY LINE	---
RIGHT OF WAY	---
EASEMENT	---
BUFFER	---
SETBACK	---
LIMITS OF DISTURBANCE	NPDES
TREE PROTECTION	○

- UTILITY PLAN NOTES**
- REFER TO GENERAL NOTES, SPECIFICATIONS, AND SCOPE OF WORK.
  - EXISTING CONDITIONS WERE OBTAINED FROM AVAILABLE RECORD DRAWINGS AND FIELD SURVEYS AND ARE NOT WARRANTED TO BE COMPLETE OR ACCURATE. CONTRACTOR SHALL VERIFY EXACT LOCATION OF ALL UTILITIES IN THE FIELD PRIOR TO THE START OF ANY WORK.
  - SOME UNDERGROUND CONDUITS MAY NOT BE SHOWN ON THESE PLANS. PRIOR TO ANY EXCAVATION, CONTRACTOR TO SUB-CONTRACT UTILITY LOCATION SERVICES FOR EXISTING UNDERGROUND UTILITIES.
  - CONTRACTOR TO PROVIDE OWNER WITH AT LEAST 48 HOURS NOTICE PRIOR TO ANY REQUIRED UTILITY SERVICE DISRUPTIONS OR SHUTDOWNS.
  - CONTRACTOR SHALL USE CARE WHEN WORKING NEAR EXISTING ACTIVE BUILDINGS AND OTHER INFRASTRUCTURE.
  - CONTRACTOR SHALL COORDINATE WITH THE BEAUFORT JASPER WATER AND SEWER AUTHORITY FOR WATER SERVICE CONNECTION.
  - CONTRACTOR SHALL COORDINATE WITH THE BEAUFORT JASPER WATER AND SEWER AUTHORITY FOR SEWER SERVICE CONNECTION.
  - CONTRACTOR SHALL COORDINATE ELECTRICAL SERVICE TO BUILDING WITH PROVIDER AND PROVIDE UNDERGROUND ELECTRICAL SERVICE CONDUITS AS APPLICABLE.
  - SITE LIGHTING FOR THE PROJECT SHALL BE PRIVATE AND PROVIDED BY THE CONTRACTOR. CONTRACTOR SHALL INSTALL ALL CONDUITS WITH PULL CORDS AND HAND HOLES.

UTILITY LEGEND	
WATER	W
SANITARY SEWER - GRAVITY	SS
SANITARY SEWER - FORCE MAIN	FM
OVERHEAD ELECTRIC	OHP
UNDERGROUND ELECTRIC	UGE
NATURAL GAS	GAS
FIBER OPTIC	FO
COMMUNICATIONS	C

BEND	⤵	WATER METER	⊞
FIRE HYDRANT	⦿	SANITARY SEWER CLEANOUT	⊙
GATE VALVE	⋈	SANITARY SEWER MANHOLE	⊚
REDUCER	▶	GAS METER	⊠
TEE	⋈	FEED THROUGH CABINET	⊞
END CAP	⊞	UTILITY POLE	⊚
BACKFLOW PREVENTOR	⋈	FIRE DEPARTMENT CONNECTION	⊞



**PROJECT DATUM INFORMATION:**  
 HORIZONTAL DATUM: SC83IF  
 VERTICAL DATUM: NAVD88

**DAVIS & FLOYD, INC.**  
 No. C00538  
 ISSUED FOR BID  
 NOT FOR CONSTRUCTION

**SOUTH CAROLINA**  
 No. 23172  
 11/07/2023  
 REGISTERED PROFESSIONAL ENGINEER  
 CIVIL ENGINEERING

**DAVIS & FLOYD**  
 SINCE 1954  
 WWW.DAVISANDFLOYD.COM

**WOOD+PARTNERS**  
 LANDSCAPE ARCHITECTURE  
 LAND PLANNING

**CITY OF BEAUFORT**  
 BEAUFORT, SC 29902

**SOUTHSIDE PARK - PHASE I**  
 PLAYGROUND AREA IMPROVEMENTS

**UTILITY PLAN - GRID 1**

NO.	DATE	DESCRIPTION	BY	CHECKED
1	03/20/24	00	SW	SW
2	03/20/24	00	SW	SW
3	11/07/2023	00	SW	SW
4	11/07/2023	00	SW	SW

PROJECT NO: C401  
 SHEET NO: 18 OF 33

