

- FIRE ALARM SYSTEM NOTES:
1. FIRE ALARM SYSTEM SHALL MEET ALL RULES AND REGULATIONS OF THE SAFETY FIRE COMMISSIONER CHAPTER 120-3-3 RULES AND REGULATIONS FOR THE STATE MINIMUM FIRE SAFETY STANDARDS AND ALL APPLICABLE CODES.
 2. A NEW FIRE ALARM PANEL AND SYSTEM SHALL REPLACE THE EXISTING FIRE ALARM SYSTEM AND INCORPORATE THE ENTIRE BUILDING INTO THE NEW SYSTEM.
 3. NEW FIRE ALARM SYSTEM SHALL INTEGRATE WITH THE EXISTING HVAC CONTROL SYSTEM TO CONTROL THE OPERATION OF THE AIR HANDLERS AND OTHER CRITICAL COMPONENTS IN THE EVENT OF FIRE ALARM ACTIVATION IN ACCORDANCE WITH ALL APPLICABLE RULES AND CODES.
 4. FIRE ALARM SHALL INCORPORATE MANUAL PULL STATIONS AT KEY POINTS THROUGHOUT THE ENTIRE BUILDING, AUDIBLE AND VISUAL ALARMS THAT WILL NOTIFY OCCUPANTS THROUGHOUT THE BUILDING INCLUDING ALL HALLWAYS, OCCUPIED OFFICES, AND MEETING ROOMS AND COURTROOMS.
 5. FIRE ALARM SHALL INCORPORATE SMOKE AND HEAT DETECTORS THROUGHOUT THE ENTIRE BUILDING INCLUDING ALL HALLWAYS, OCCUPIED OFFICES, AND MEETING ROOMS AND COURTROOMS.
 6. FIRE ALARM WILL DEACTIVATE ALL CARD ACCESS LOCKS TO ALLOW IMMEDIATE EGRESS.
 7. FIRE ALARM SYSTEM SHALL BE CONNECTED TO THE LAN SO THE STATUS OF EACH ZONE AND COMPONENT IS VISIBLE ON THE SECURITY CONTROL STATION COMPUTER AT THE PUBLIC ENTRANCE, AND BE AVAILABLE VIA INTERNET CONNECTION TO VIEW THE STATUS OF EACH ZONE FROM VARIOUS CONTROL STATIONS AND USERS THROUGHOUT THE COUNTY.
 8. CONTRACTOR SHALL RECOMMEND AND SUBMIT A QUOTE TO MEET THE ABOVE STANDARDS IN THE DRY STORAGE AREAS.



Peach County

Public Works
 410 OLD MACON ROAD
 FORT VALLEY, GEORGIA
 PHONE: (478) 825-8717
 FAX: (478) 825-8624

REVISIONS	DATE

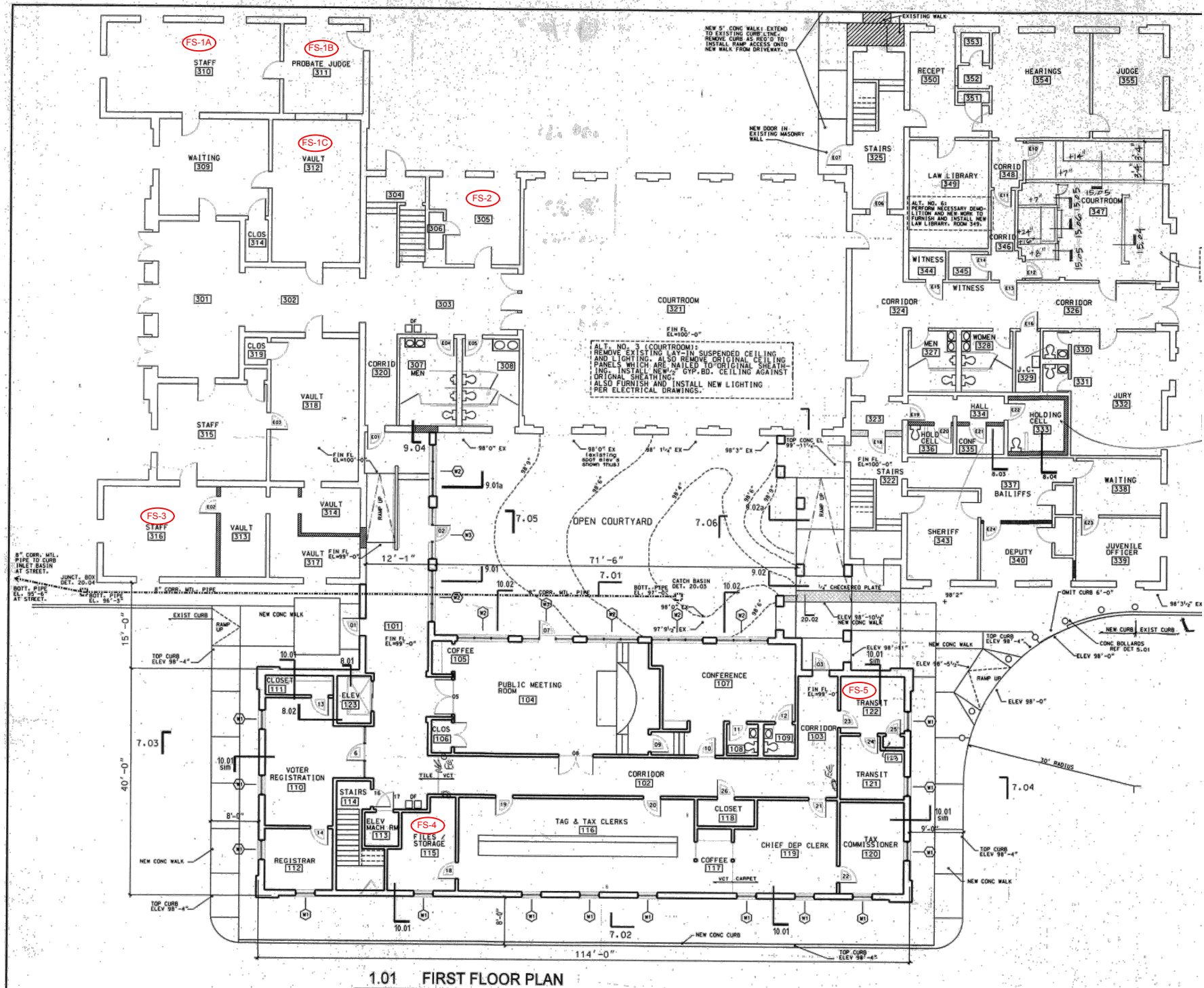
PEACH COUNTY COURTHOUSE
 205 CHURCH STREET, FORT VALLEY
 PEACH COUNTY, GEORGIA

PUBLIC WORKS
 410 OLD MACON ROAD FORT VALLEY, GA
 24-HR CONTACT: PAUL SCHWINDLER, P.E.
 MBL: (478) 508-8098

COURTHOUSE SECURITY AND ACCESS
 UPGRADE, PROJECT 17E

ISSUE DATE 05/30/2017
SCALE 1" = ??
SHEET NUMBER C1 OF C2

FIRE SUPPRESSION SYSTEM PLAN SKETCH



1.01 FIRST FLOOR PLAN

FIRE SUPPRESSION SYSTEM PLAN SKETCH

FIRE SUPPRESSION SYSTEM NOTES:

1. FIRE SUPPRESSION SYSTEMS SHALL MEET ALL RULES AND REGULATIONS OF THE SAFETY FIRE COMMISSIONER CHAPTER 120-3-3 RULES AND REGULATIONS FOR THE STATE MINIMUM FIRE SAFETY STANDARDS AND ALL APPLICABLE CODES.
2. EACH AREA NOTED ON THIS SKETCH REPRESENTS A ROOM OR AREA USED FOR STORAGE OF DRY MATERIALS, FILES, AND PAPER.
3. CONTRACTOR SHALL RECOMMEND AND SUBMIT A QUOTE TO MEET THE ABOVE STANDARDS IN THE DRY STORAGE AREAS.



Peach County

Public Works
 410 OLD MACON ROAD
 FORT VALLEY, GEORGIA
 PHONE: (478) 825-8717
 FAX: (478) 825-8624

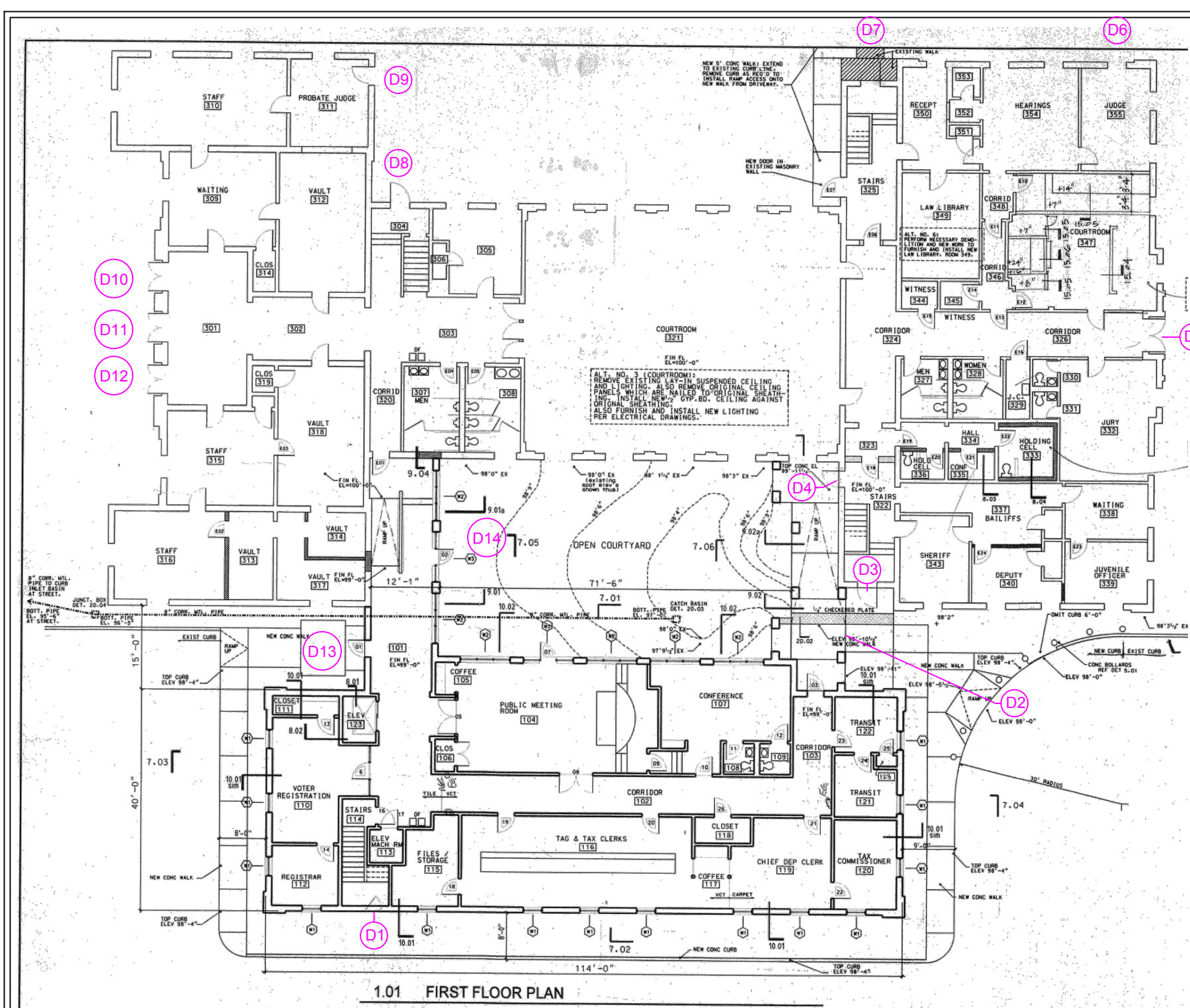
REVISIONS	DATE

PEACH COUNTY COURTHOUSE
 205 CHURCH STREET, FORT VALLEY
 PEACH COUNTY, GEORGIA

PUBLIC WORKS
 410 OLD MACON ROAD FORT VALLEY, GA
 24-HR CONTACT: PAUL SCHWINDLER, P.E.
 MBL: (478) 508-8098

COURTHOUSE SECURITY AND ACCESS
 UPGRADE, PROJECT 17E

ISSUE DATE 05/30/2017
SCALE 1" = ??
SHEET NUMBER C1 OF C2



1.01 FIRST FLOOR PLAN

DOOR AND ACCESS PLAN SKETCH

- DOOR AND ACCESS NOTES:
- D1. WEST ENTRANCE - INTERIOR AND EXTERIOR CONTACT CARD ACCESS READERS; DELAYED EXIT PANIC BAR WITH AUDIBLE ALARM AND A CONSOL ALERT AT THE PUBLIC ENTRANCE SECURITY DESK.
 - D2. REAR COURTYARD ENTRANCE - INTERIOR AND EXTERIOR CONTACT CARD ACCESS READERS; DELAYED EXIT PANIC BAR WITH AUDIBLE ALARM AND A CONSOL ALERT AT THE PUBLIC ENTRANCE SECURITY DESK.
 - D3. SOUTHWEST STAIRWELL WEST ENTRANCE - DELAYED EXIT PANIC BAR WITH AUDIBLE ALARM AND A CONSOL ALERT AT THE PUBLIC ENTRANCE SECURITY DESK.
 - D4. SOUTHWEST STAIRWELL EAST ENTRANCE - CHANGE TO UPPER GLASS WINDOW STEEL STORE FRONT DOOR WITH STANDARD EXTERIOR LOCK CYLINDER AND INTERNAL PANIC BAR (NO ALARM)
 - D5. COLLEGE STREET ENTRANCE - (DOUBLE DOORS), INSTALL NEW DOUBLE 29-INCH WIDE STOREFRONT DOORS AND FRAMES SIZED TO EXISTING OPENING AND MATCHING THE EXISTING ARCHITECTURAL STYLE AND INTERIOR AND EXTERIOR FINISHES; INTERIOR 10" STAINLESS STEEL KICK PLATE; INTERIOR AND EXTERIOR CONTACT CARD ACCESS READERS TO OPERATE BOTH DOORS; DELAYED EXIT PANIC BAR WITH AUDIBLE ALARM AND A CONSOL ALERT AT THE PUBLIC ENTRANCE SECURITY DESK.
 - D6. JUDGES' ENTRANCE - REMOVE SCREEN DOOR; INSTALL NEW COMMERCIAL GRADE STEEL PANEL DOOR WHITE PAINTED FINISH; INTERIOR AND EXTERIOR 10" STAINLESS STEEL KICK PLATE
 - D7. SOUTHEAST STAIRWELL ENTRANCE - INSTALL NEW COMMERCIAL STEEL DOOR SIZED TO FIT EXISTING FRAME WITH APPROXIMATELY 4' X 25" NARROW CLEAR GLASS, WHITE FINISH, 10" STAINLESS STEEL KICK PLATE; INTERIOR AND EXTERIOR CONTACT CARD ACCESS READERS; DELAYED EXIT PANIC BAR WITH AUDIBLE ALARM AND A CONSOL ALERT AT THE PUBLIC ENTRANCE SECURITY DESK.
 - D8. NORTHWEST STAIRWELL ENTRANCE - INTERIOR AND EXTERIOR CONTACT CARD ACCESS READERS; DELAYED EXIT PANIC BAR WITH AUDIBLE ALARM AND A CONSOL ALERT AT THE PUBLIC ENTRANCE SECURITY DESK.
 - D9. COURT STORAGE ENTRANCE -
 - D10. FRONT DOOR EAST - INSTALL NEW DOUBLE 29-INCH WIDE STOREFRONT DOORS AND FRAMES SIZED TO EXISTING OPENING AND MATCHING THE EXISTING STYLE AND INTERIOR AND EXTERIOR FINISHES; INTERIOR 10" STAINLESS STEEL KICK PLATE; INTERIOR AND EXTERIOR CONTACT CARD ACCESS READER FOR EAST DOOR ONLY; DELAYED EXIT PANIC BAR WITH AUDIBLE ALARM AND A CONSOL ALERT AT THE PUBLIC ENTRANCE SECURITY DESK.
 - D11. FRONT DOOR CENTER - INSTALL NEW DOUBLE 29-INCH WIDE STOREFRONT DOORS AND FRAMES SIZED TO EXISTING OPENING AND MATCHING THE EXISTING STYLE AND INTERIOR AND EXTERIOR FINISHES; DELAYED EXIT PANIC BAR WITH AUDIBLE ALARM AND A CONSOL ALERT AT THE PUBLIC ENTRANCE SECURITY DESK.
 - D12. FRONT DOOR WEST - INSTALL NEW DOUBLE 29-INCH WIDE STOREFRONT DOORS AND FRAMES SIZED TO EXISTING OPENING AND MATCHING THE EXISTING STYLE AND INTERIOR AND EXTERIOR FINISHES; DELAYED EXIT PANIC BAR WITH AUDIBLE ALARM AND A CONSOL ALERT AT THE PUBLIC ENTRANCE SECURITY DESK.
 - D13. PUBLIC ENTRANCE - INSTALL NEW STORE FRONT DOOR AND FRAME SIZED TO FIT EXISTING OPENING AND MATCH THE EXISTING STYLE AND FINISH; NEW ADA OPERATOR



Peach County

Public Works
 410 OLD MACON ROAD
 FORT VALLEY, GEORGIA
 PHONE: (478) 825-8717
 FAX: (478) 825-8624

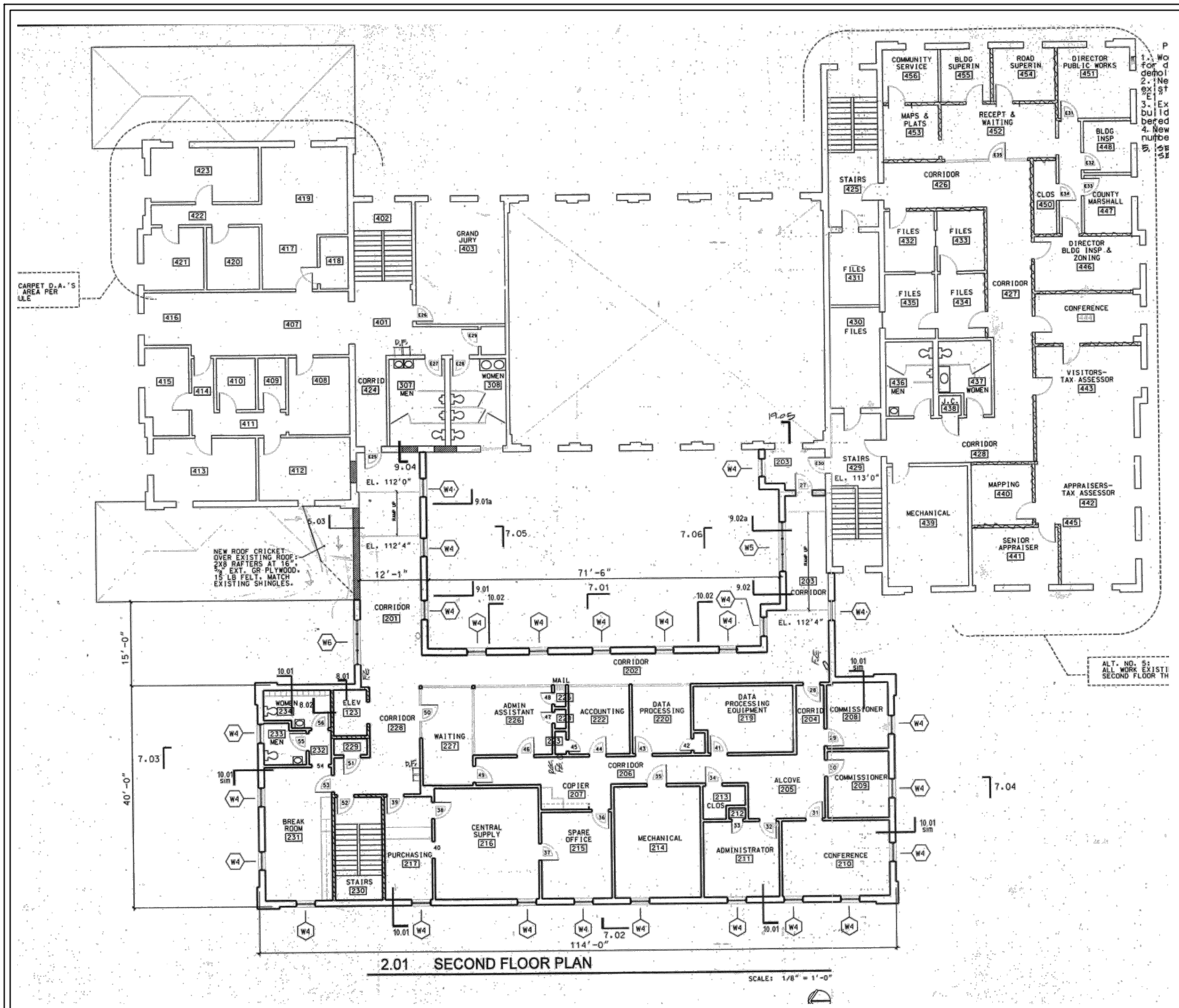
REVISIONS	DATE

PEACH COUNTY COURTHOUSE
 205 CHURCH STREET, FORT VALLEY
 PEACH COUNTY, GEORGIA

PUBLIC WORKS
 410 OLD MACON ROAD FORT VALLEY, GA
 24-HR CONTACT: PAUL SCHWINDLER, P.E.
 MBL: (478) 508-8098

COURTHOUSE SECURITY AND ACCESS
 UPGRADE, PROJECT 17E

ISSUE DATE 05/30/2017
SCALE 1" = ??
SHEET NUMBER C1 OF C2



FIRE ALARM SYSTEM NOTES:

1. FIRE ALARM SYSTEM SHALL MEET ALL RULES AND REGULATIONS OF THE SAFETY FIRE COMMISSIONER CHAPTER 120-3-3 RULES AND REGULATIONS FOR THE STATE MINIMUM FIRE SAFETY STANDARDS AND ALL APPLICABLE CODES.
2. A NEW FIRE ALARM PANEL AND SYSTEM SHALL REPLACE THE EXISTING FIRE ALARM SYSTEM AND INCORPORATE THE ENTIRE BUILDING INTO THE NEW SYSTEM.
3. NEW FIRE ALARM SYSTEM SHALL INTEGRATE WITH THE EXISTING HVAC CONTROL SYSTEM TO CONTROL THE OPERATION OF THE AIR HANDLERS AND OTHER CRITICAL COMPONENTS IN THE EVENT OF FIRE ALARM ACTIVATION IN ACCORDANCE WITH ALL APPLICABLE RULES AND CODES.
4. FIRE ALARM SHALL INCORPORATE MANUAL PULL STATIONS AT KEY POINTS THROUGHOUT THE ENTIRE BUILDING, AUDIBLE AND VISUAL ALARMS THAT WILL NOTIFY OCCUPANTS THROUGHOUT THE BUILDING INCLUDING ALL HALLWAYS, OCCUPIED OFFICES, AND MEETING ROOMS AND COURTROOMS.
5. FIRE ALARM SHALL INCORPORATE SMOKE AND HEAT DETECTORS THROUGHOUT THE ENTIRE BUILDING INCLUDING ALL HALLWAYS, OCCUPIED OFFICES, AND MEETING ROOMS AND COURTROOMS.
6. FIRE ALARM WILL DEACTIVATE ALL CARD ACCESS LOCKS TO ALLOW IMMEDIATE EGRESS.
7. FIRE ALARM SYSTEM SHALL BE CONNECTED TO THE LAN SO THE STATUS OF EACH ZONE AND COMPONENT IS VISIBLE ON THE SECURITY CONTROL STATION COMPUTER AT THE PUBLIC ENTRANCE, AND BE AVAILABLE VIA INTERNET CONNECTION TO VIEW THE STATUS OF EACH ZONE FROM VARIOUS CONTROL STATIONS AND USERS THROUGHOUT THE COUNTY.
8. CONTRACTOR SHALL RECOMMEND AND SUBMIT A QUOTE TO MEET THE ABOVE STANDARDS IN THE DRY STORAGE AREAS.

FIRE SUPPRESSION SYSTEM PLAN SKETCH



Peach County

Public Works
 410 OLD MACON ROAD
 FORT VALLEY, GEORGIA
 PHONE: (478) 825-8717
 FAX: (478) 825-8624

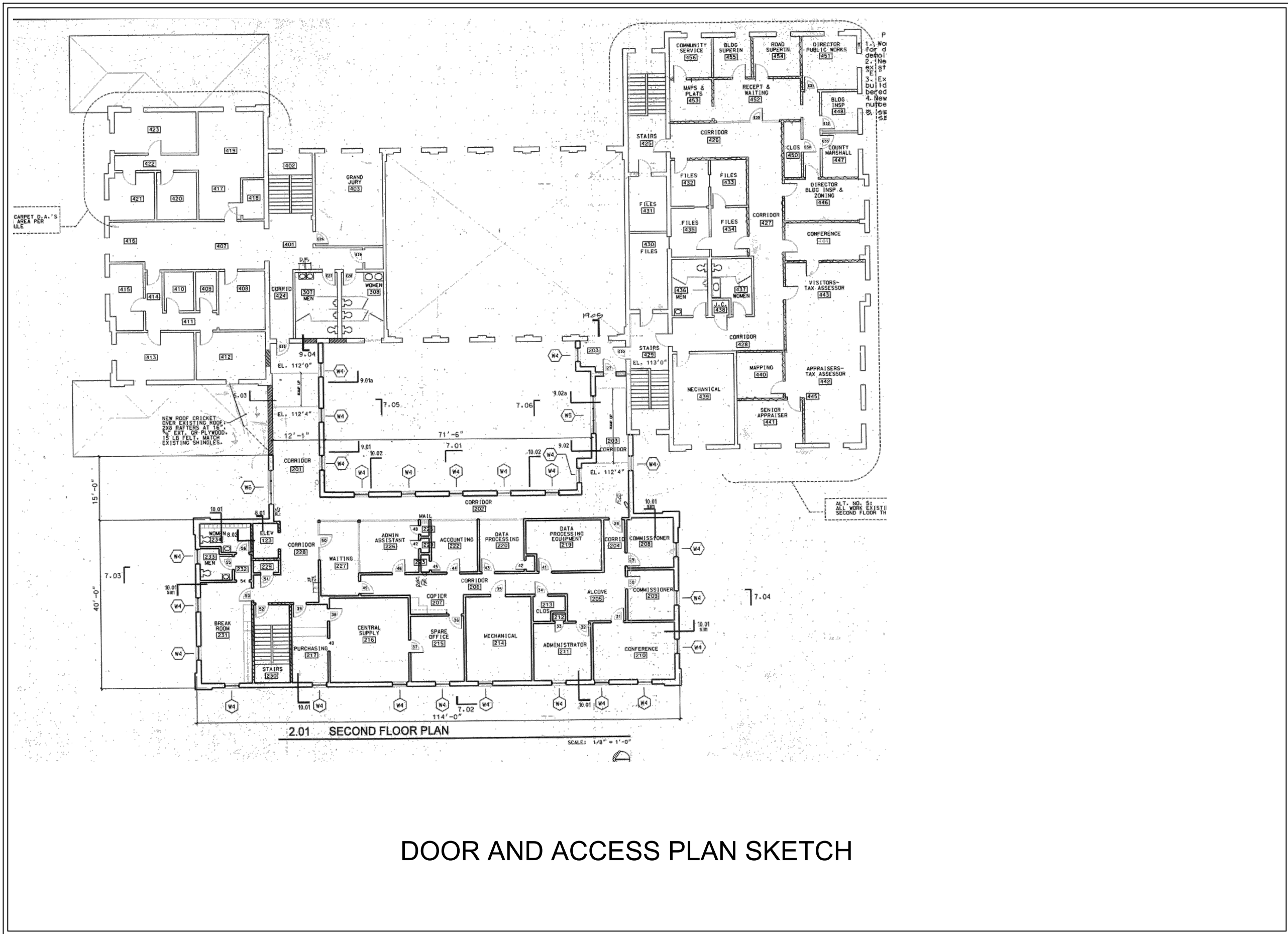
REVISIONS	DATE

PEACH COUNTY COURTHOUSE
 205 CHURCH STREET, FORT VALLEY
 PEACH COUNTY, GEORGIA

PUBLIC WORKS
 410 OLD MACON ROAD FORT VALLEY, GA
 24-HR CONTACT: PAUL SCHWINDLER, P.E.
 MBL: (478) 508-8098

COURTHOUSE SECURITY AND ACCESS
 UPGRADE, PROJECT 17E

ISSUE DATE 05/30/2017
SCALE 1" = ??
SHEET NUMBER C1 OF C2



DOOR AND ACCESS PLAN SKETCH



Peach County

Public Works
 410 OLD MACON ROAD
 FORT VALLEY, GEORGIA
 PHONE: (478) 825-8717
 FAX: (478) 825-8624

REVISIONS	DATE

PEACH COUNTY COURTHOUSE
 205 CHURCH STREET, FORT VALLEY
 PEACH COUNTY, GEORGIA

PUBLIC WORKS
 410 OLD MACON ROAD FORT VALLEY, GA
 24-HR CONTACT: PAUL SCHWINDLER, P.E.
 MBL: (478) 508-8098

COURTHOUSE SECURITY AND ACCESS
 UPGRADE, PROJECT 17E

ISSUE DATE 05/30/2017
SCALE 1" = ??
SHEET NUMBER C1 OF C2