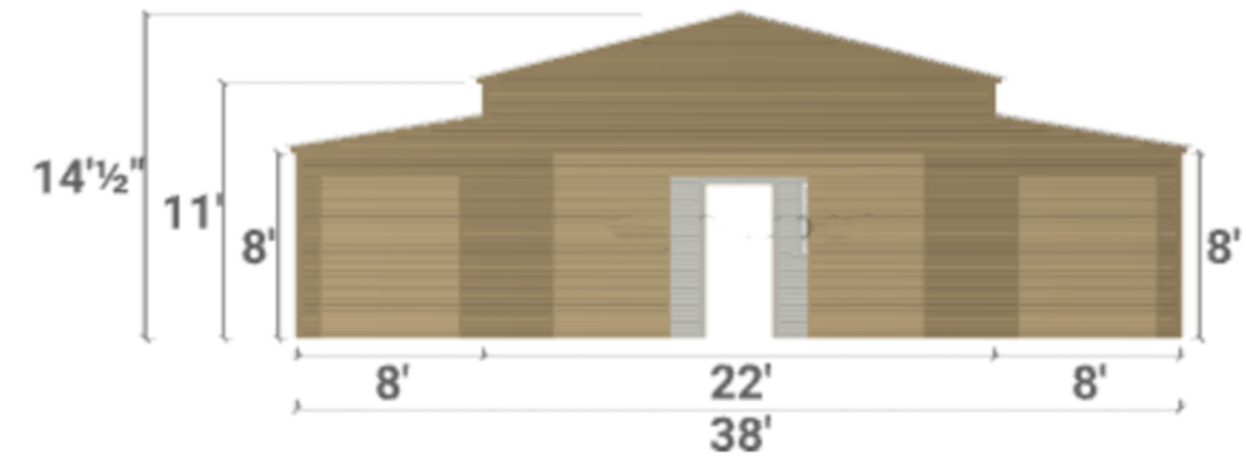


Peach County Animal Control

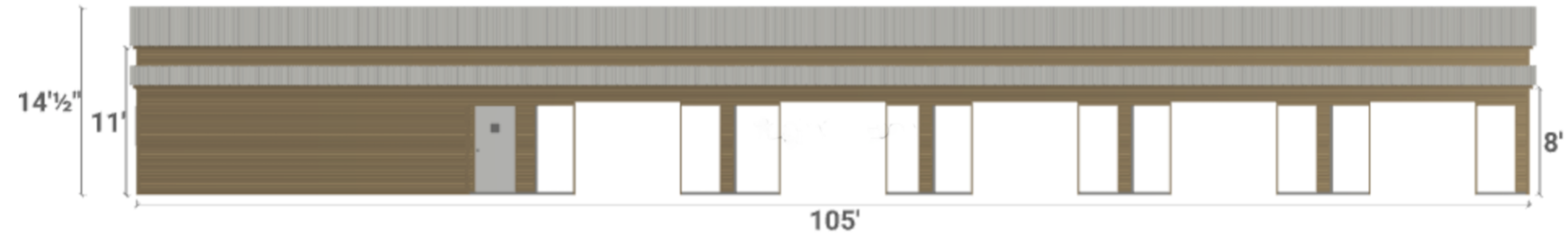
*Drawings are not to scale and are for illustrative and placement purposes

Note: If you are winner of bid or quote, and have questions,
please contact Wade Yoder 478-825-7410
wade-yoder@peachcounty.net

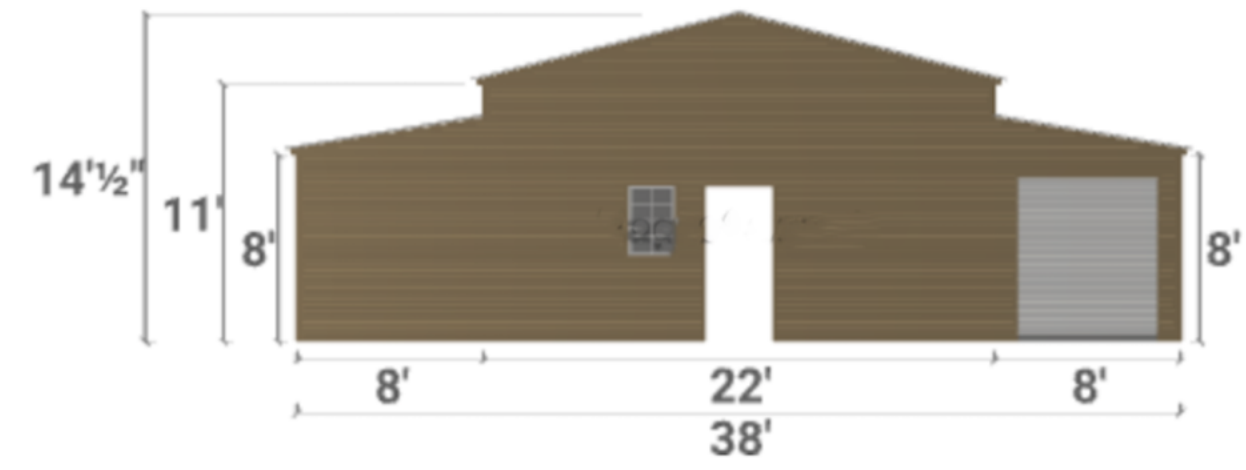
FRONT



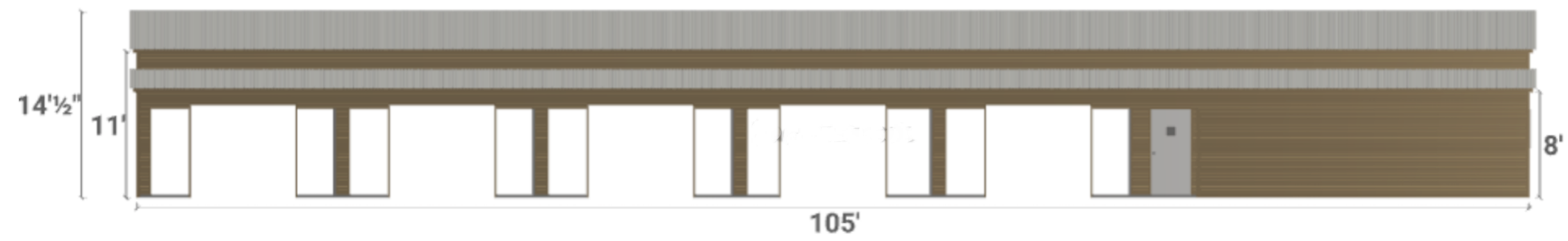
LEFT SIDE



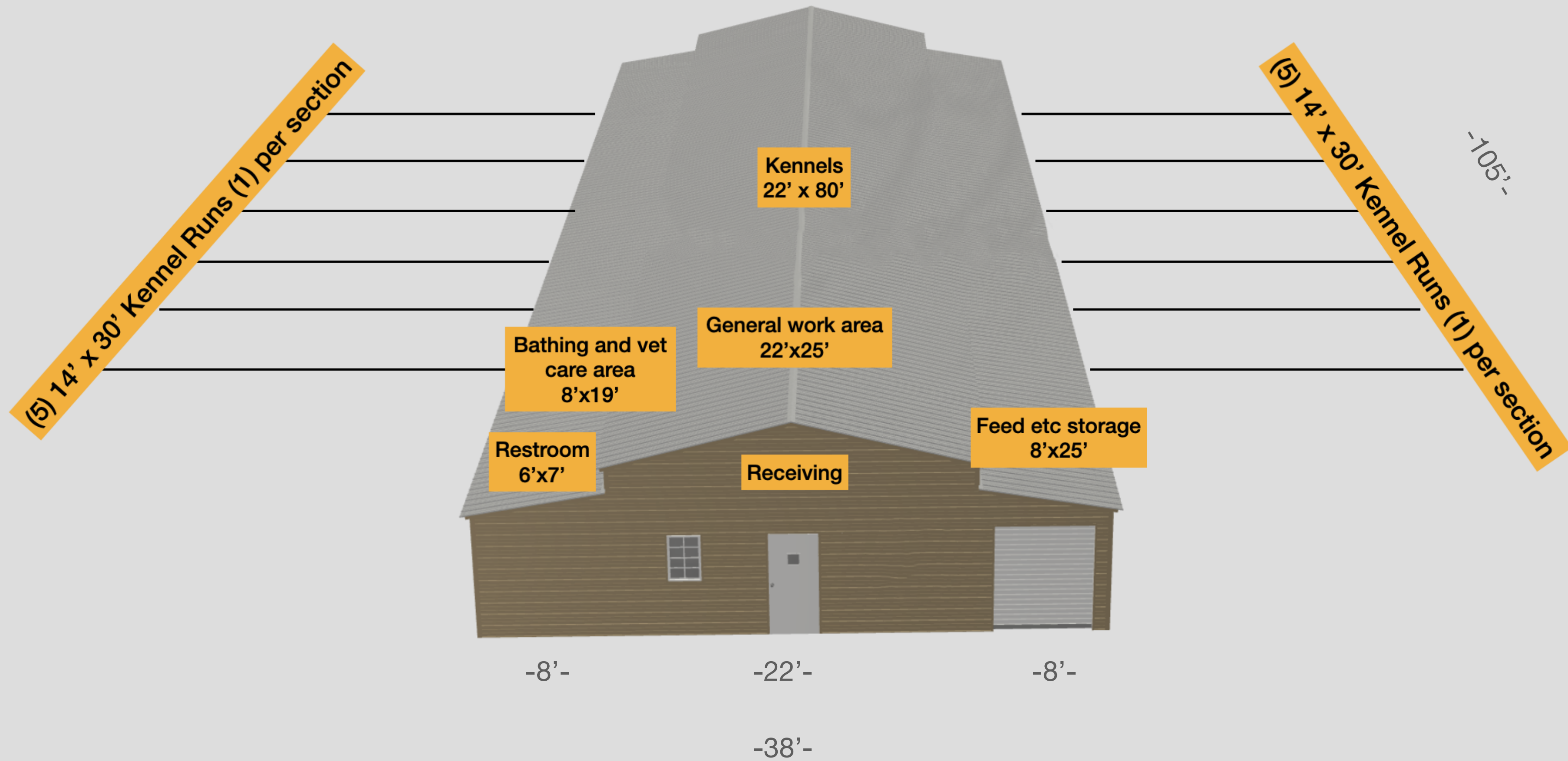
BACK

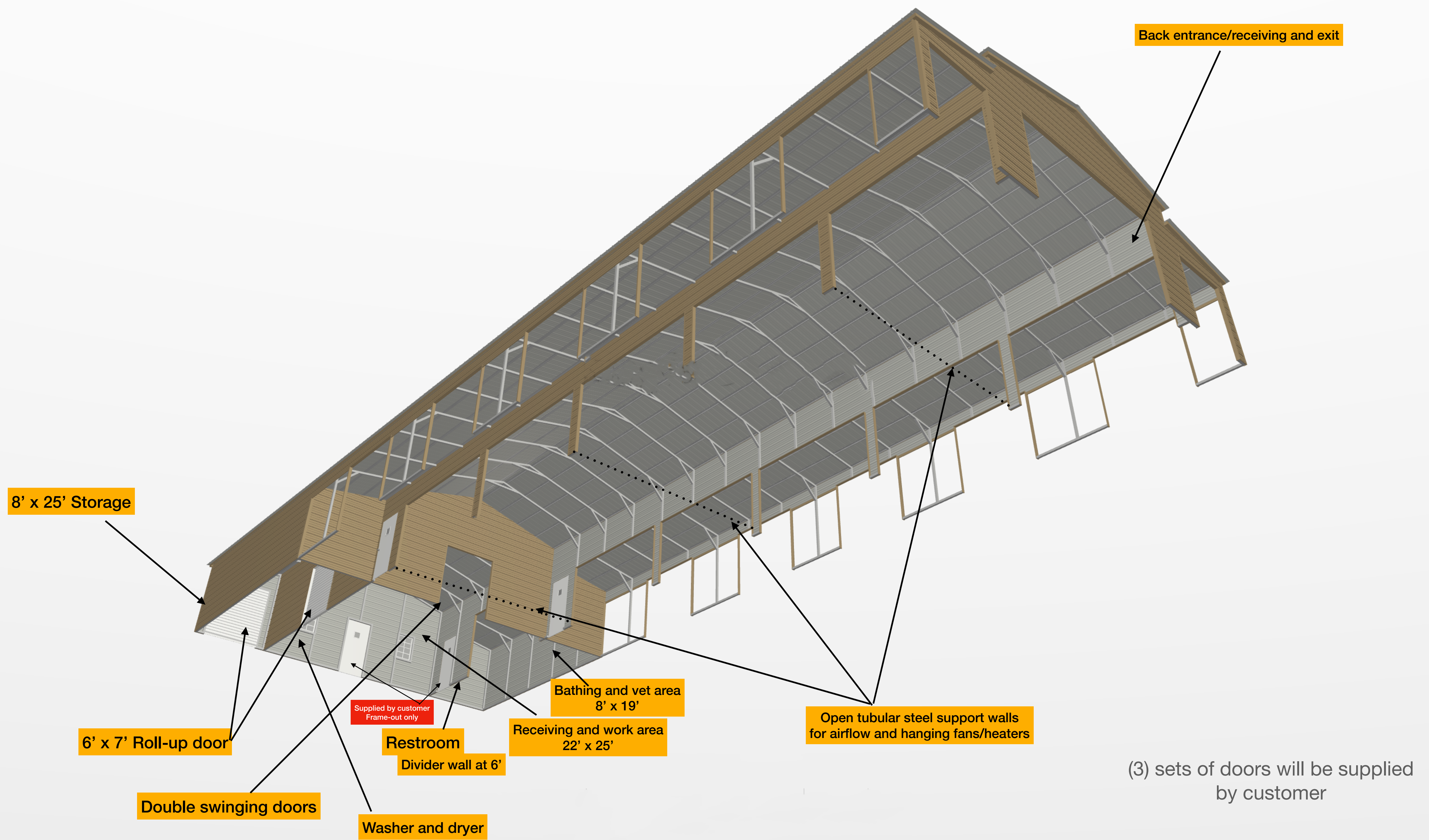


RIGHT SIDE



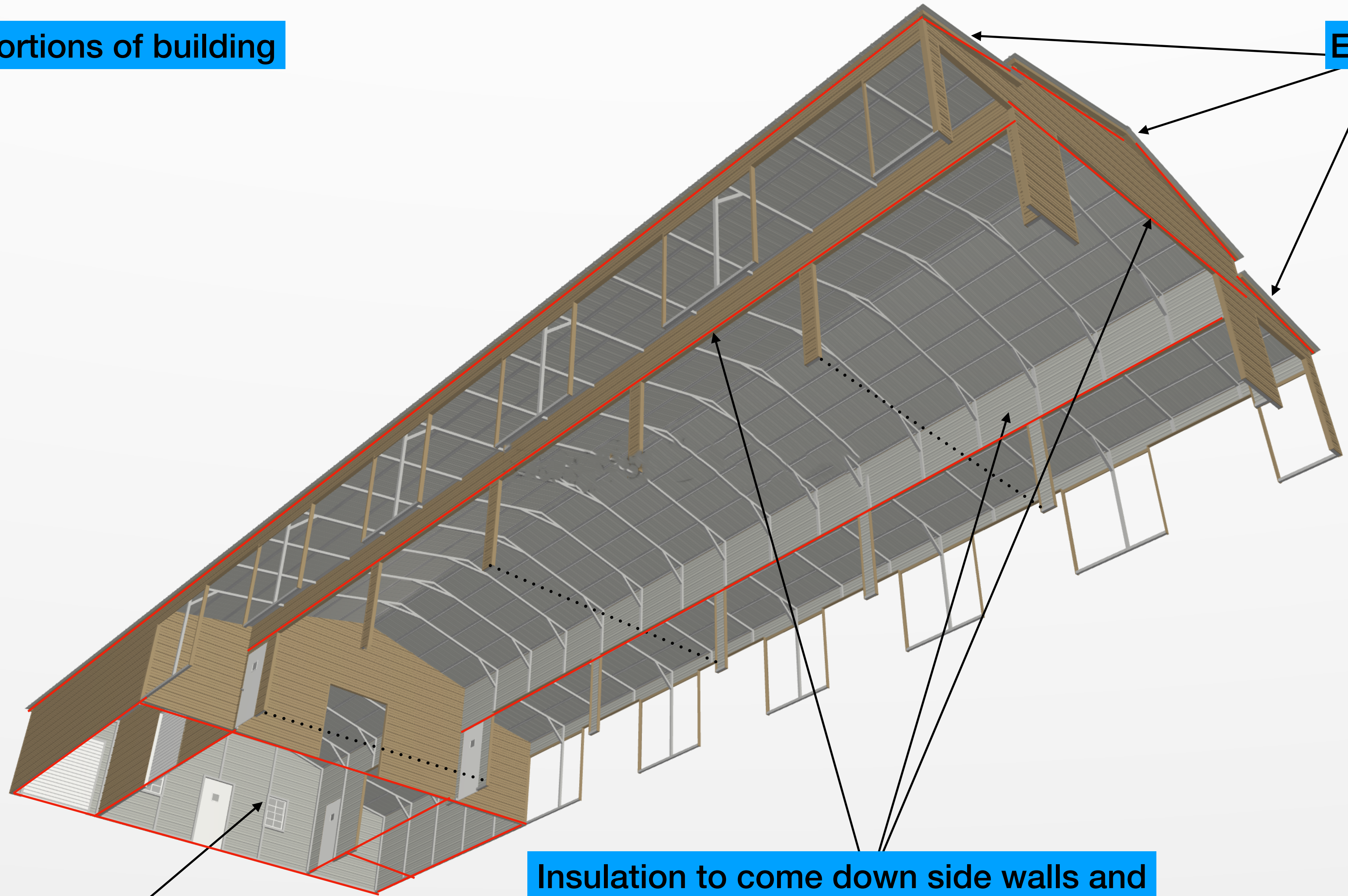
Building size 38' x 105' x 11'8"





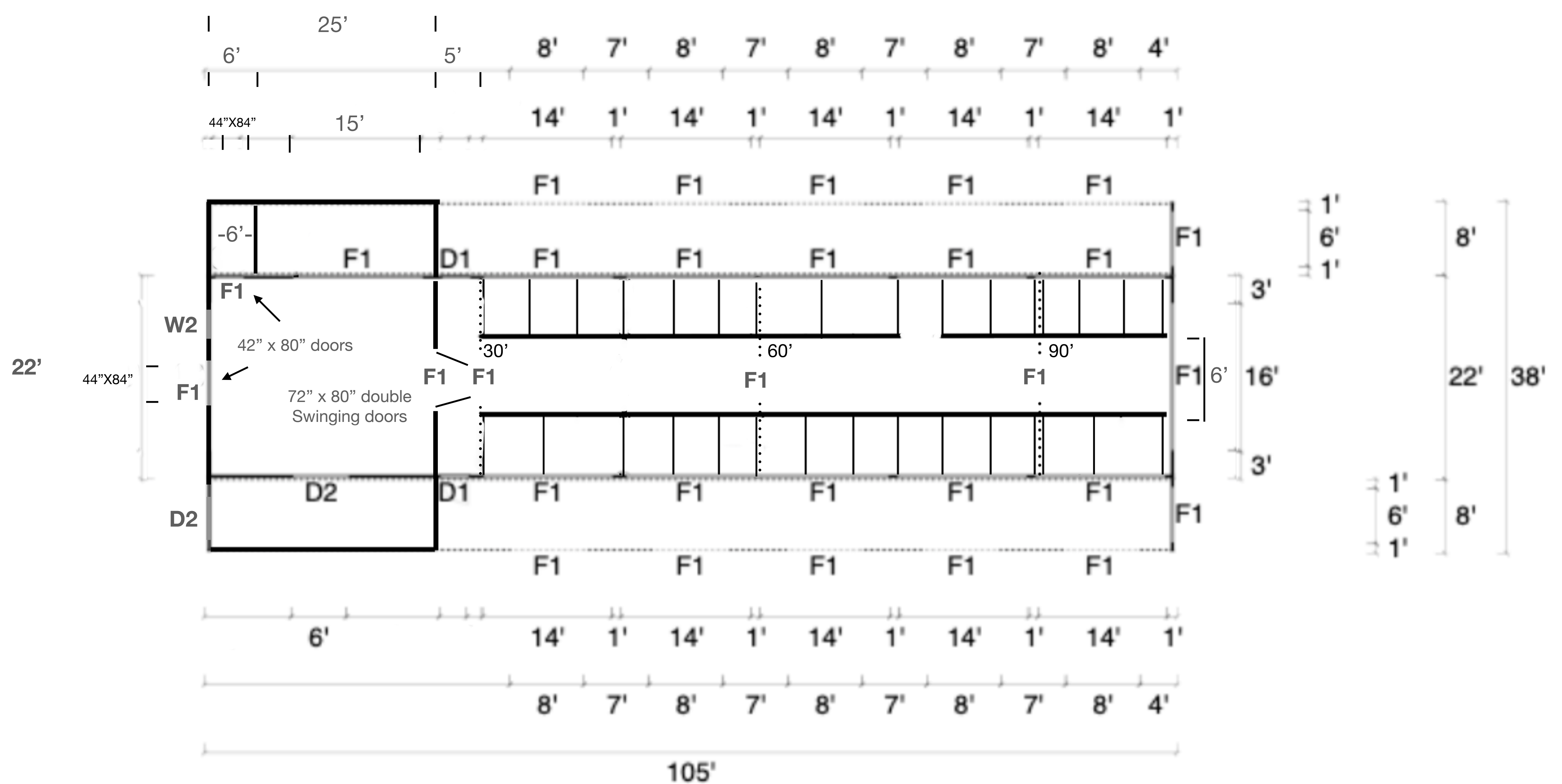
Insulated portions of building

Entire roof



Insulation to come down side walls and gable on end wall of open area

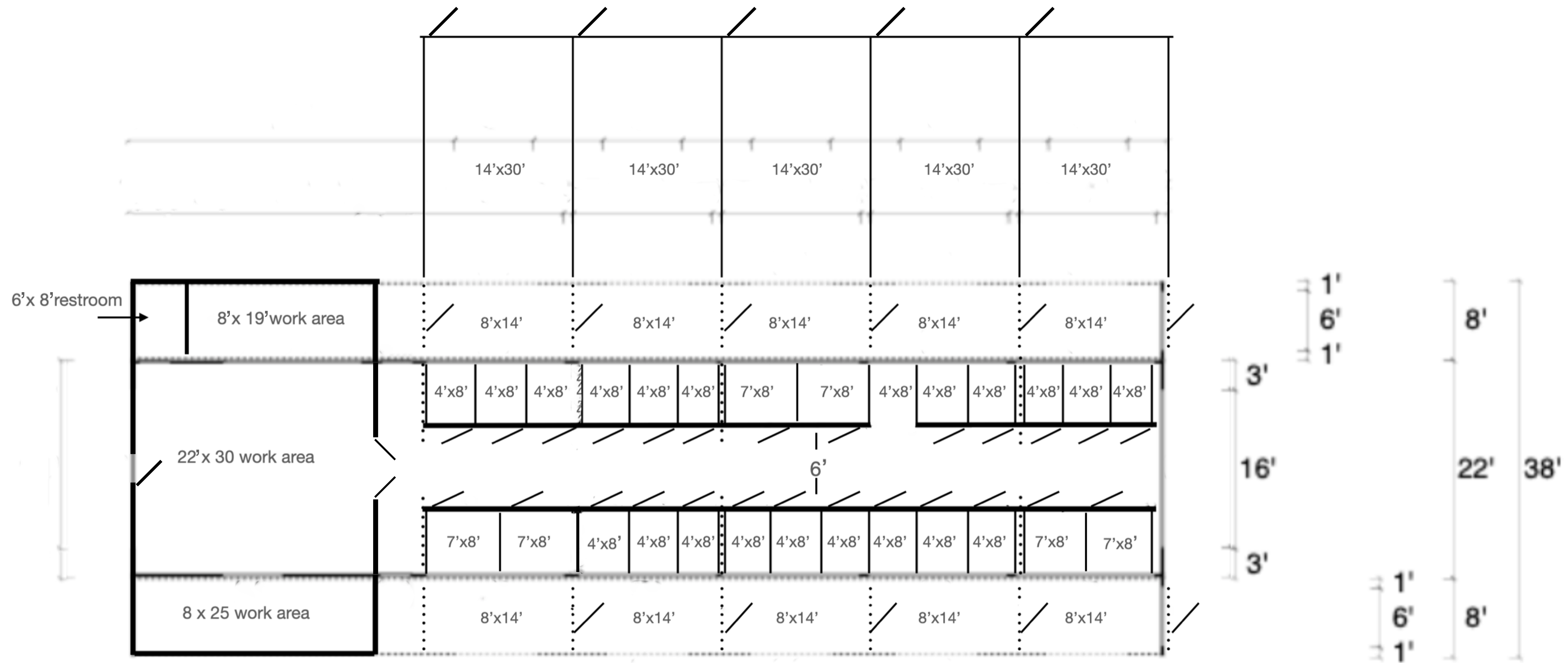
All walls around and in enclosed area



(3) Tubular steel open walls with
 10' x 8' frame-outs
 Spaced at
 30'
 60'
 90'

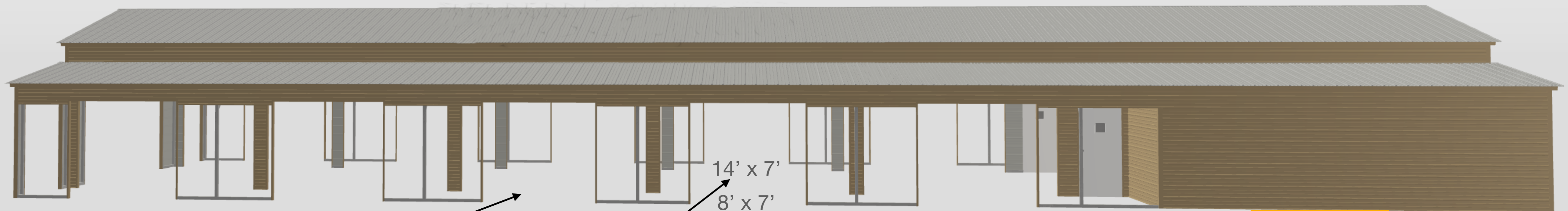
(1) Frame-out for 72" x 80" swinging
 double doors
(2) Frame-outs for 42" x 80" doors approximately
 a 44" x 84" frame-out needed
(2) 6' x 7' Roll-up doors
(2) 36" x 80" entry doors

F1 = Door Frame-out
W2 = Window
D1 - Entry Door
D2 = Roll-up Door



- (6) 7'x8' kennels and (20) 4'x8 kennels
- 14 x 30 Kennel Runs (these can be split up later for more runs)
- Tubular walls for fans and heaters
- Solid wall for receiving area **————**
- Gated kennel fencing in lean-to's

*Drawings are for illustrative purpose and not to scale



(2) 29' gutters and (1) 14' gutter under open area of both lean-to's

Frame-out opening measurements

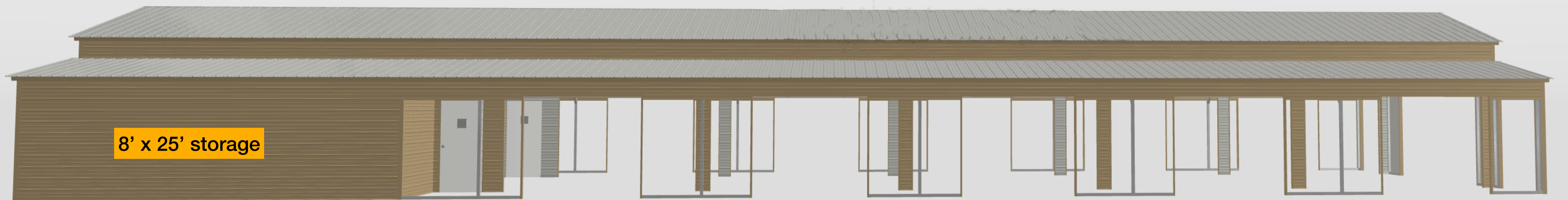
14' x 7'

8' x 7'

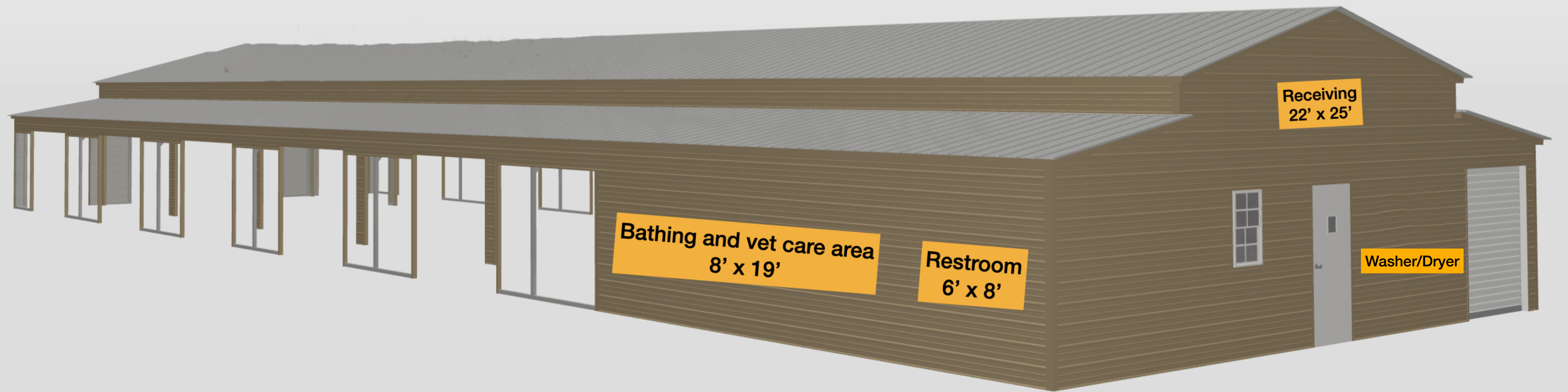
(1) 14' gutter in lean-to area along outside wall of lean-to

HVAC Unit
750 sq. ft. Temperature
controlled

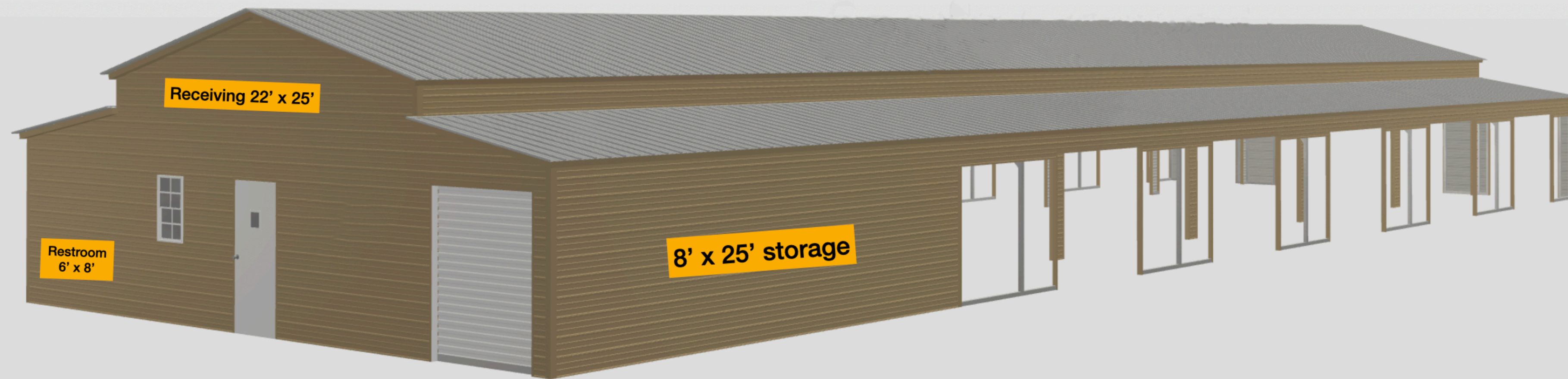
A pipe needs to be
inserted here for
electrical supply



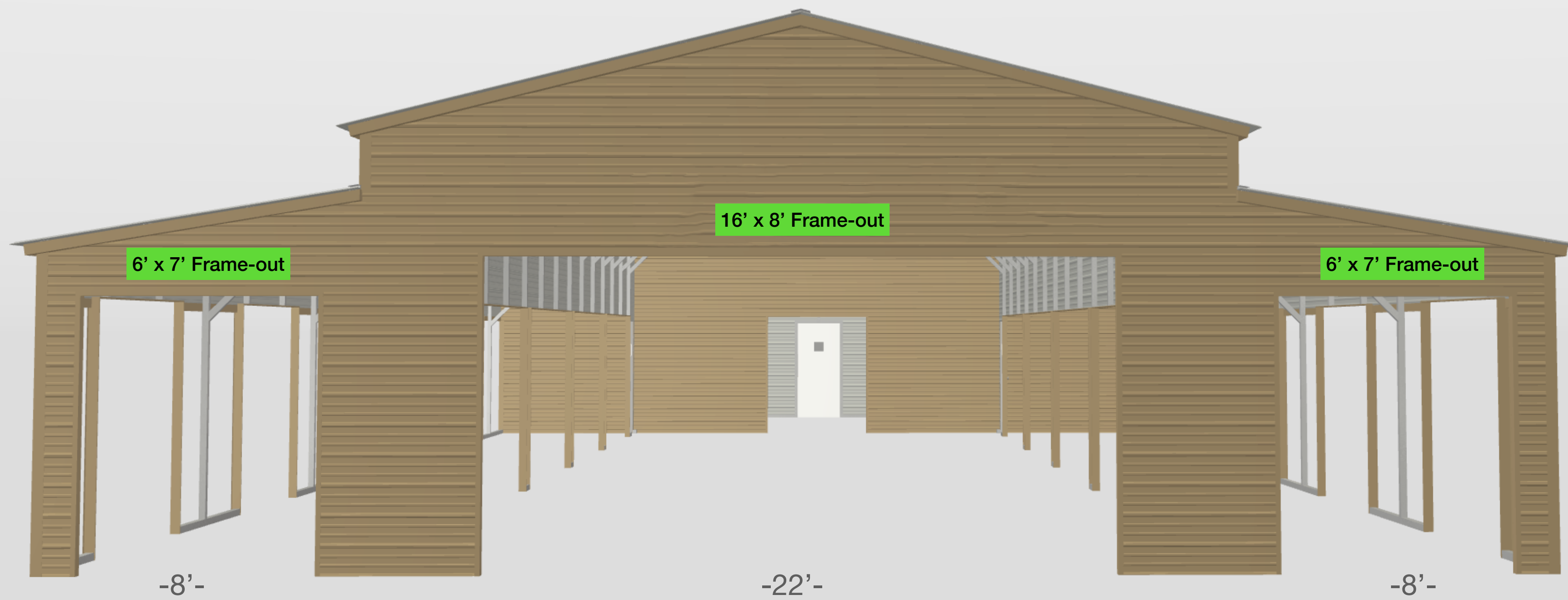
Right side view



Left view



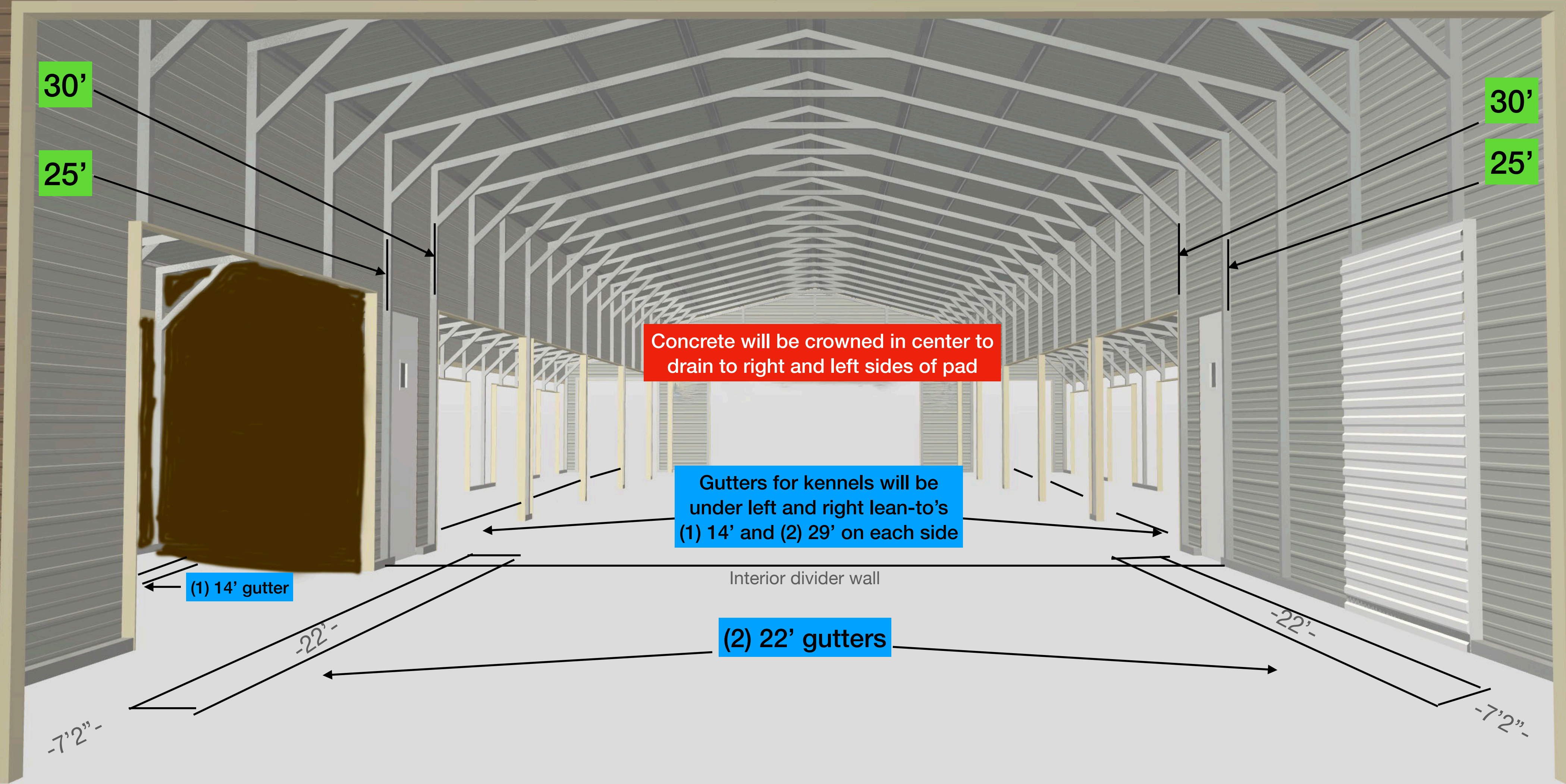
Right view



This end can also be used for intake

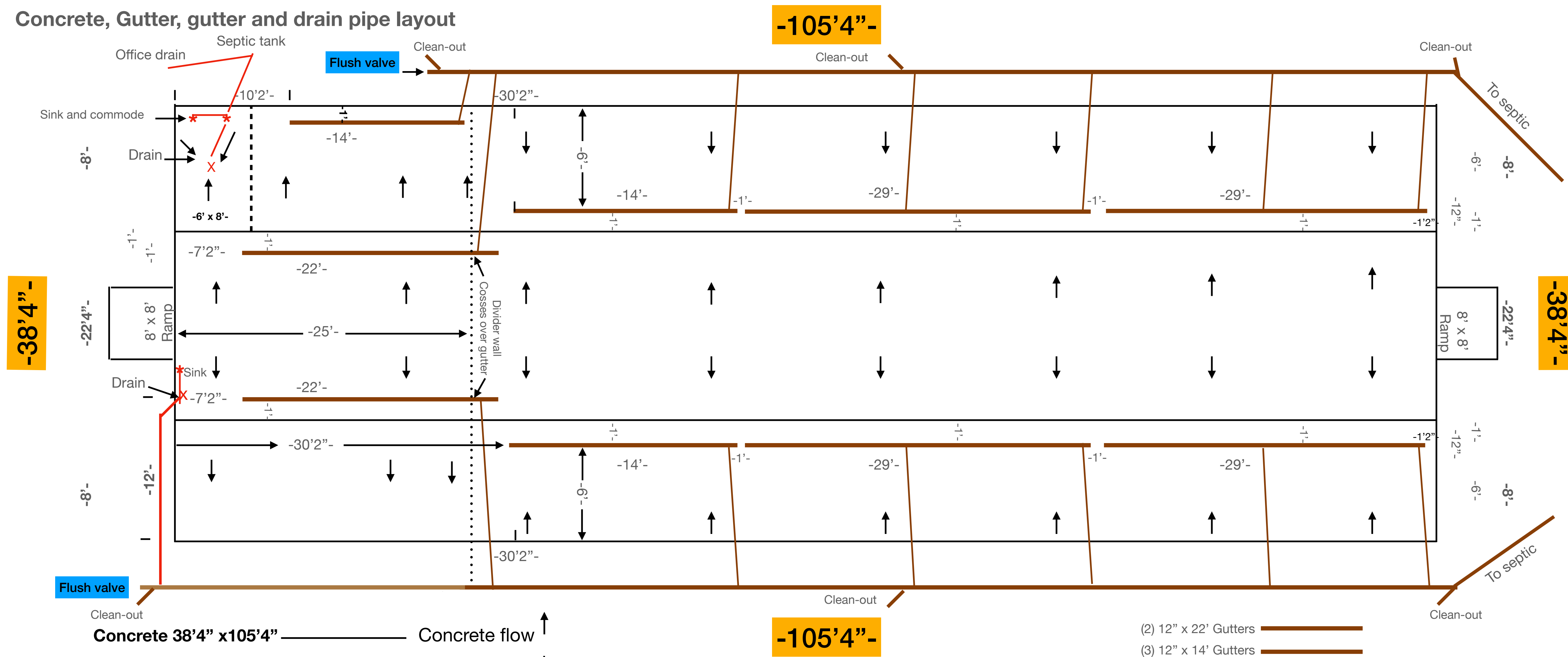
-38'-

Rear view of kennel area



View without interior walls

Concrete, Gutter, gutter and drain pipe layout



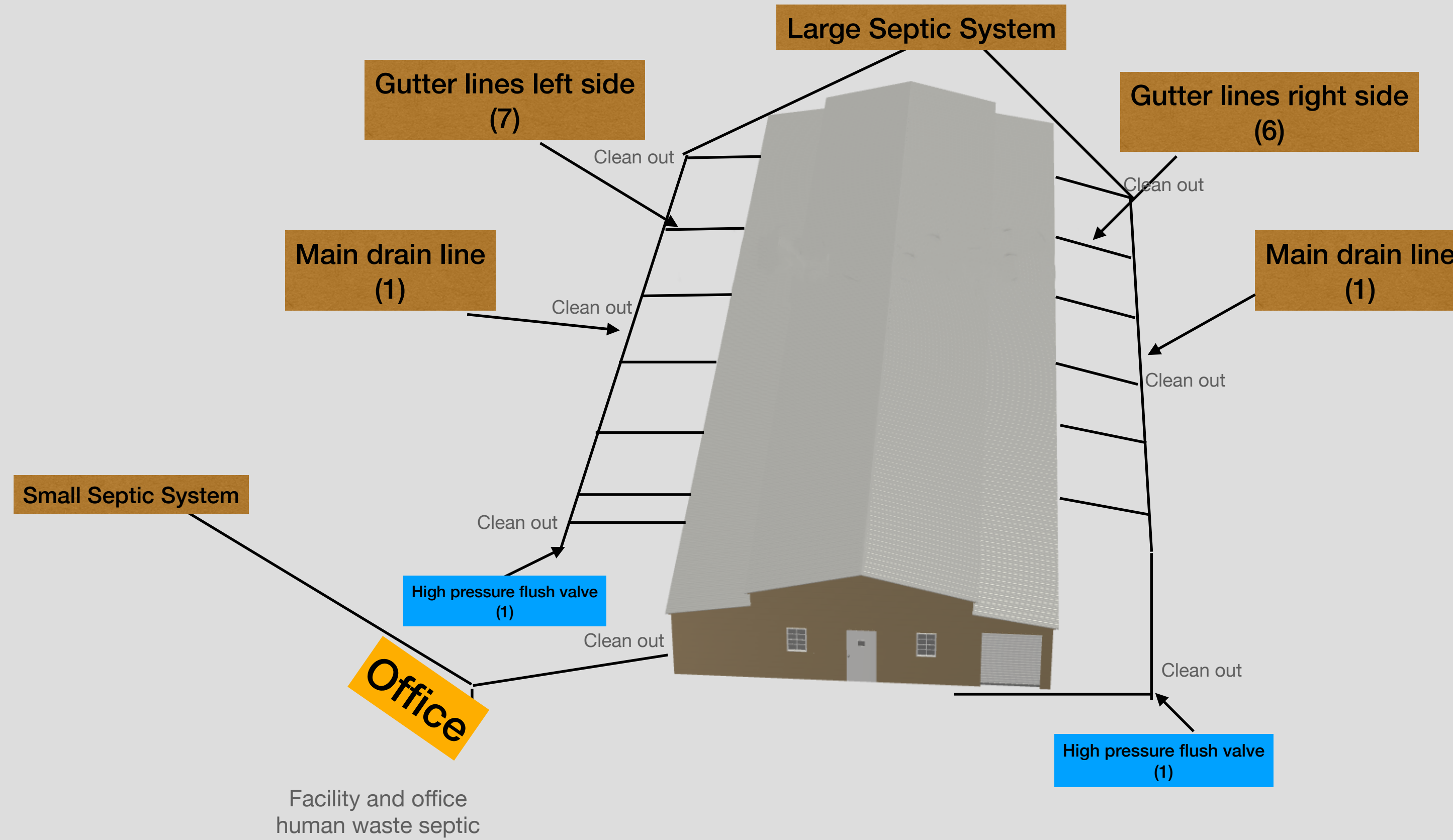
Concrete 38'4" x 105'4" Concrete flow ↑

- (1) 22'4" x 105'4" center pad
- (2) 8' x 105'4" lean-to pads
- (2) 8' x 8' sloped ramps

- *Concrete crowned in center.
- *Entire center pad will have a 1" fall to right and left side of pad (from the center).
- *Except for first 6' of left lean-to pad (for restroom drain) the first 30' of both lean-to's continue slope to outer edge.
- *Starting at 30' concrete in lean-to's will slope inward to the gutters.
- *A divider wall will cross over gutters in center slab between 24.5' - 25.5' (concrete needs to cross over gutter for the base-rail).

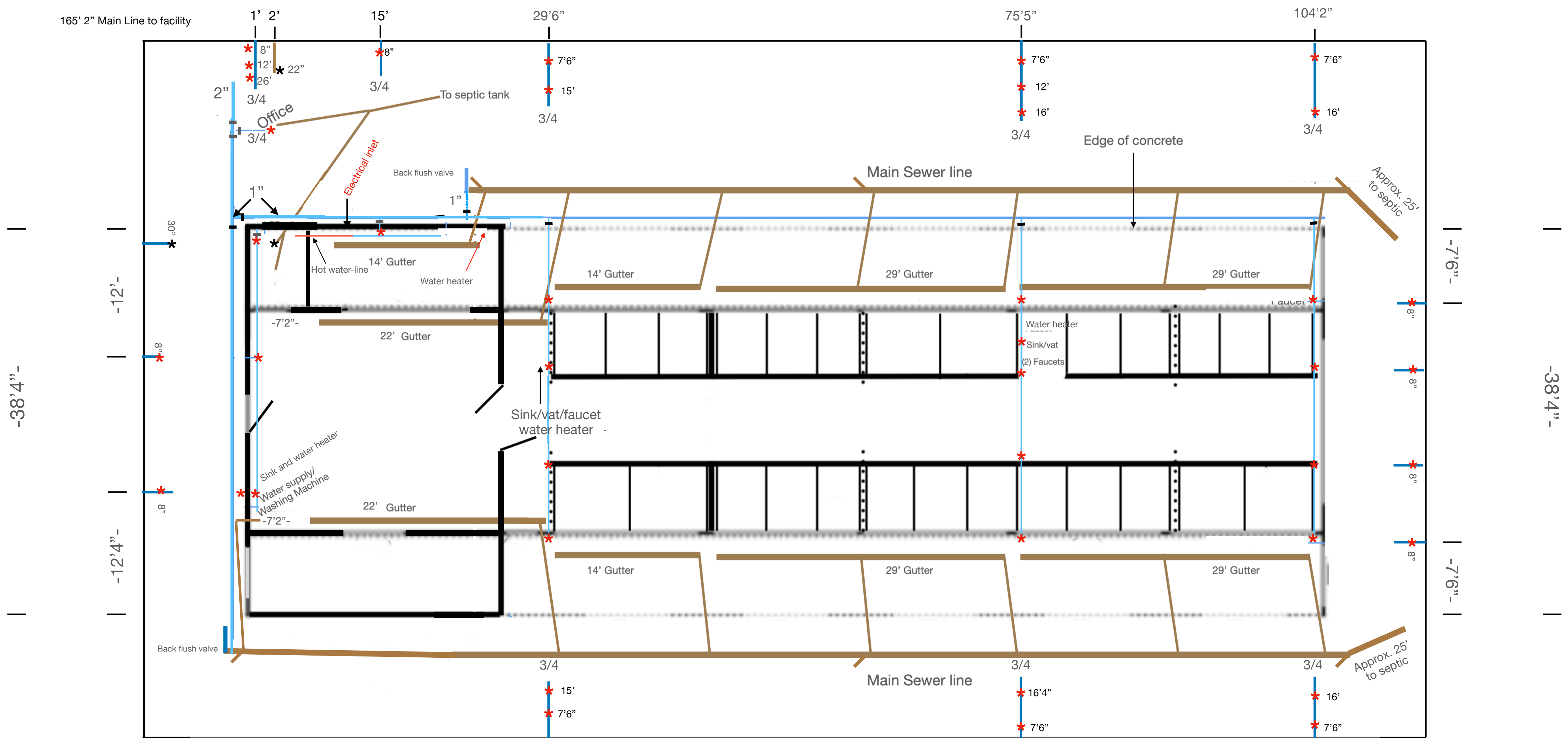
- (2) 12" x 22' Gutters
- (3) 12" x 14' Gutters
- (4) 12" x 29' Gutters
- (13) 4" Gutter drain-pipes
- (2) Floor Drain Rest Room/Washing Machine X
- (3) 3" Floor Drain Pipes
- Commode, sink or washing machine *
- (6) Clean-outs
- Approximately 255 ft. 6" sewage trunk-line
- (1) 3000 Gallon septic tank (facility)
- (1) 1000 Gallon septic tank (human waste, facility and office)

Drainage and septic



Water supply

-105'4"-



165' 2" Main Line to facility

-38'4"-

-38'4"-

620' 2" Main Line from fire hydrant

(20) supply line stub-outs *

29'6"

150' 1" PEX-B water supply line
 165' 3/4" PEX-B feeder lines
 20 3/4" PEX-B supply line stub-outs
 11 Shut-offs

(16) Exterior Anti-Siphon faucets
 30' 1/2" Hot Water PEX (for fixture connections)
 30' 1/2" Cold Water PEX (for fixture connections)

-12'-

-12'4"-

-7'9"-

-7'9"-

Back flush valve

Office

Electrical inlet

Back flush valve

Hot water-line

Water heater

Sink and water heater

Water supply/
Washing Machine

Sink/vat/faucet
water heater

Water heater

Sink/vat

(2) Faucets

Edge of concrete

Approx. 25'
to septic

Approx. 25'
to septic

Main Sewer line

Main Sewer line

15'

7'6"

16'4"

7'6"

16'

7'6"

8"

12"

26"

3/4"

3/4"

3/4"

1"

3/4"

1"

1"

1"

1"

1"

1"

1"

1"

1"

1"

1"

1"

1"

1"

1"

1"

1"

1"

1"

1"

1"

1"

1'

2'

15'

29'6"

75'5"

104'2"

8"

12"

26"

3/4"

3/4"

3/4"

3/4"

3/4"

3/4"

3/4"

3/4"

3/4"

3/4"

3/4"

3/4"

3/4"

3/4"

3/4"

3/4"

3/4"

3/4"

3/4"

3/4"

3/4"

7'6"

15'

7'6"

12'

16'

7'6"

16'

7'6"

16'

7'6"

16'

7'6"

16'

7'6"

16'

7'6"

16'

7'6"

16'

7'6"

16'

7'6"

16'

7'6"

16'

7'6"

16'

7'6"

16'

7'6"

7'6"

15'

7'6"

12'

16'

7'6"

16'

7'6"

16'

7'6"

16'

7'6"

16'

7'6"

16'

7'6"

16'

7'6"

16'

7'6"

16'

7'6"

16'

7'6"

16'

7'6"

16'

7'6"

16'

7'6"

7'6"

15'

7'6"

12'

16'

7'6"

16'

7'6"

16'

7'6"

16'

7'6"

16'

7'6"

16'

7'6"

16'

7'6"

16'

7'6"

16'

7'6"

16'

7'6"

16'

7'6"

16'

7'6"

16'

7'6"

7'6"

15'

7'6"

12'

16'

7'6"

16'

7'6"

16'

7'6"

16'

7'6"

16'

7'6"

16'

7'6"

16'

7'6"

16'

7'6"

16'

7'6"

16'

7'6"

16'

7'6"

16'

7'6"

16'

7'6"

7'6"

15'

7'6"

12'

16'

7'6"

16'

7'6"

16'

7'6"

16'

7'6"

16'

7'6"

16'

7'6"

16'

7'6"

16'

7'6"

16'

7'6"

16'

7'6"

16'

7'6"

16'

7'6"

16'

7'6"

7'6"

15'

7'6"

12'

16'

7'6"

16'

7'6"

16'

7'6"

16'

7'6"

16'

7'6"

16'

7'6"

16'

7'6"

16'

7'6"

16'

7'6"

16'

7'6"

16'

7'6"

16'

7'6"

16'

7'6"

7'6"

15'

7'6"

12'

16'

7'6"

16'

7'6"

16'

7'6"

16'

7'6"

16'

7'6"

16'

7'6"

16'

7'6"

16'

7'6"

16'

7'6"

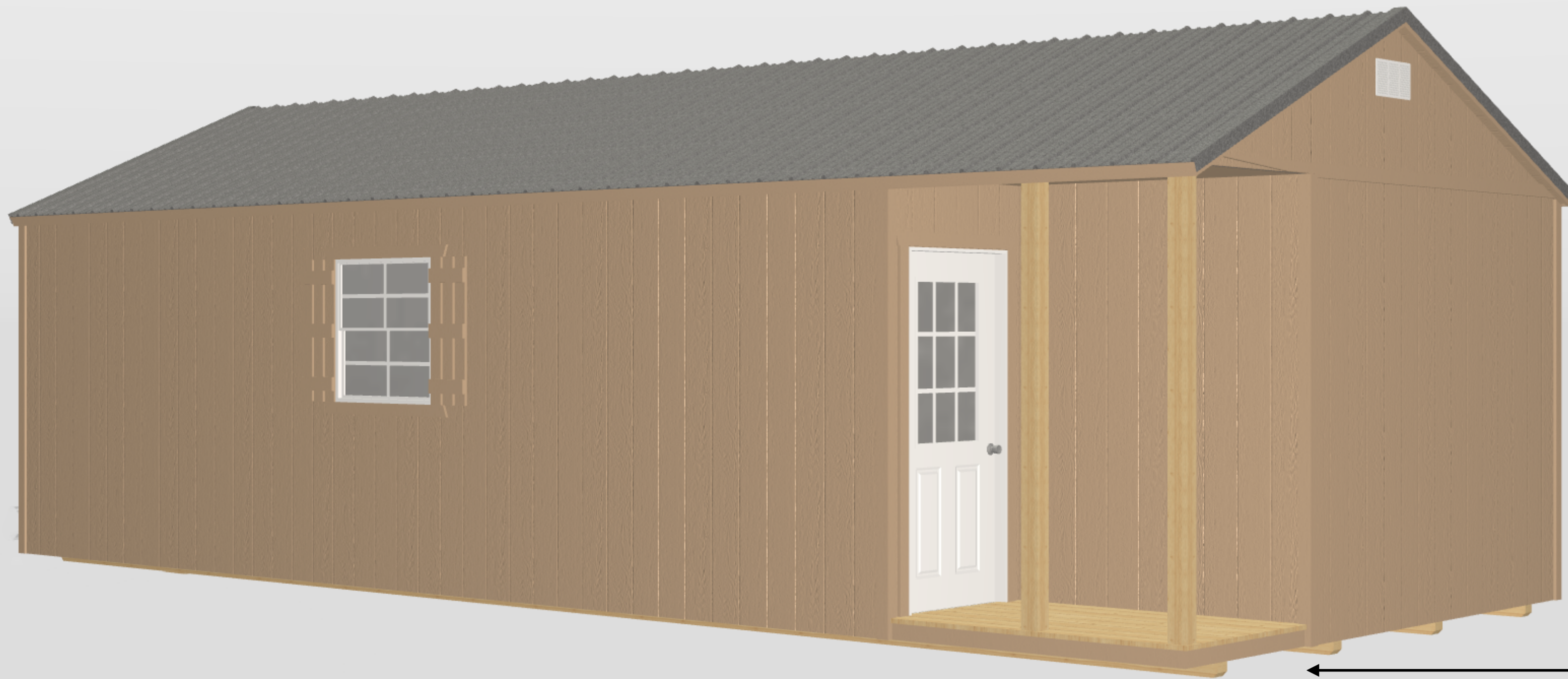
16'

7'6"

16'

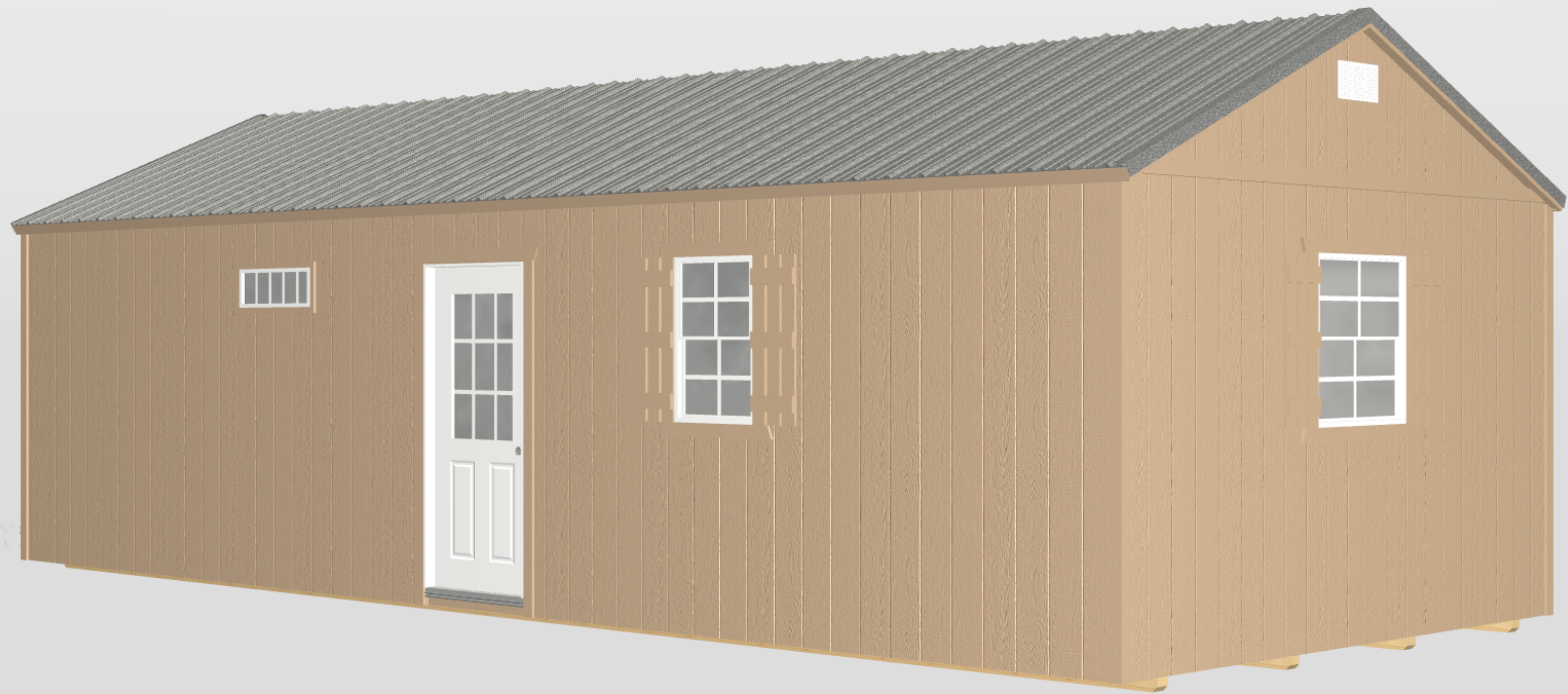
7'6"

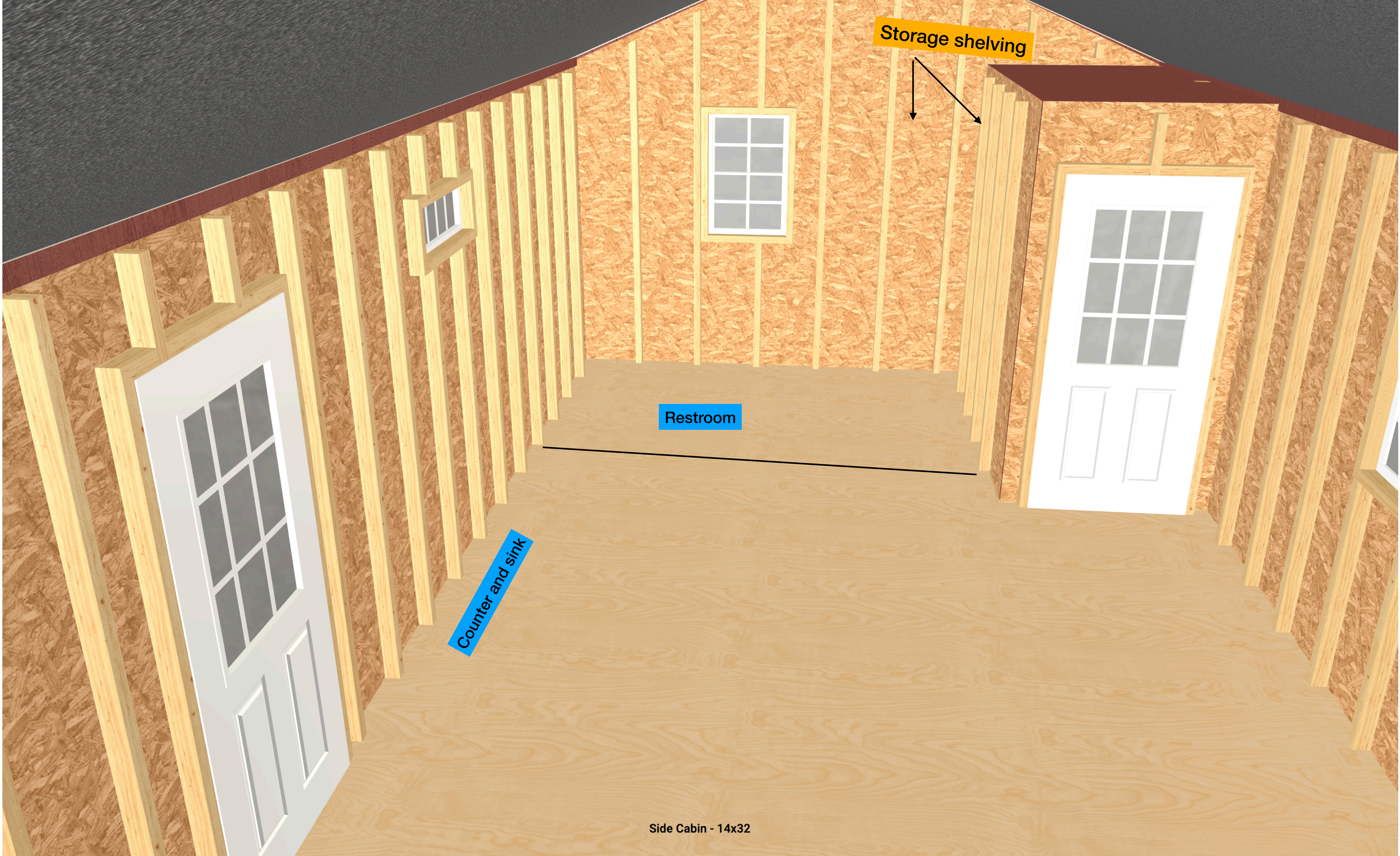
16'</



ADA compliant ramp and handrails

**Small office and storage
14' x 32' Side Porch Cabin**





Storage shelving

Restroom

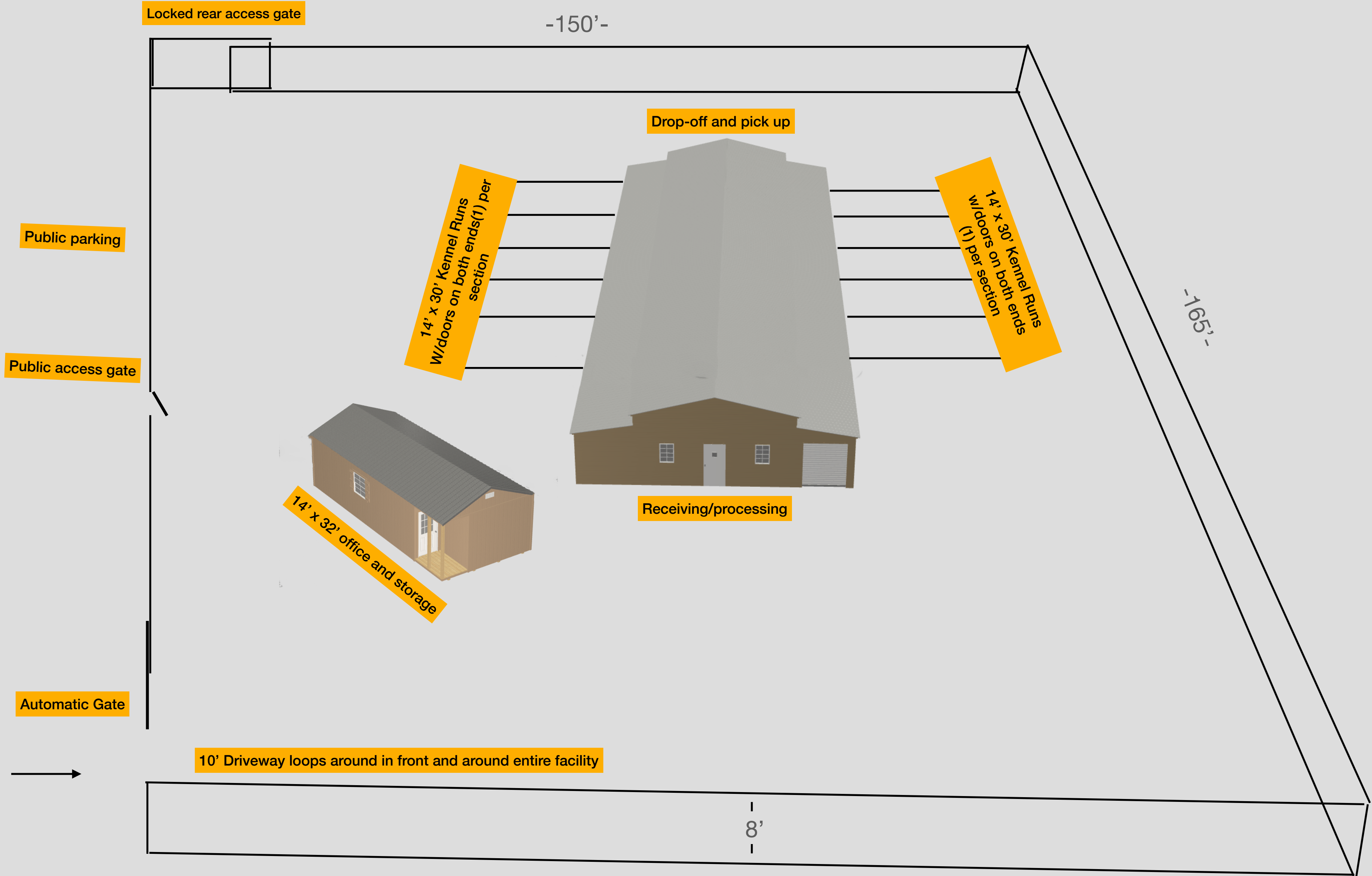
Counter and sink

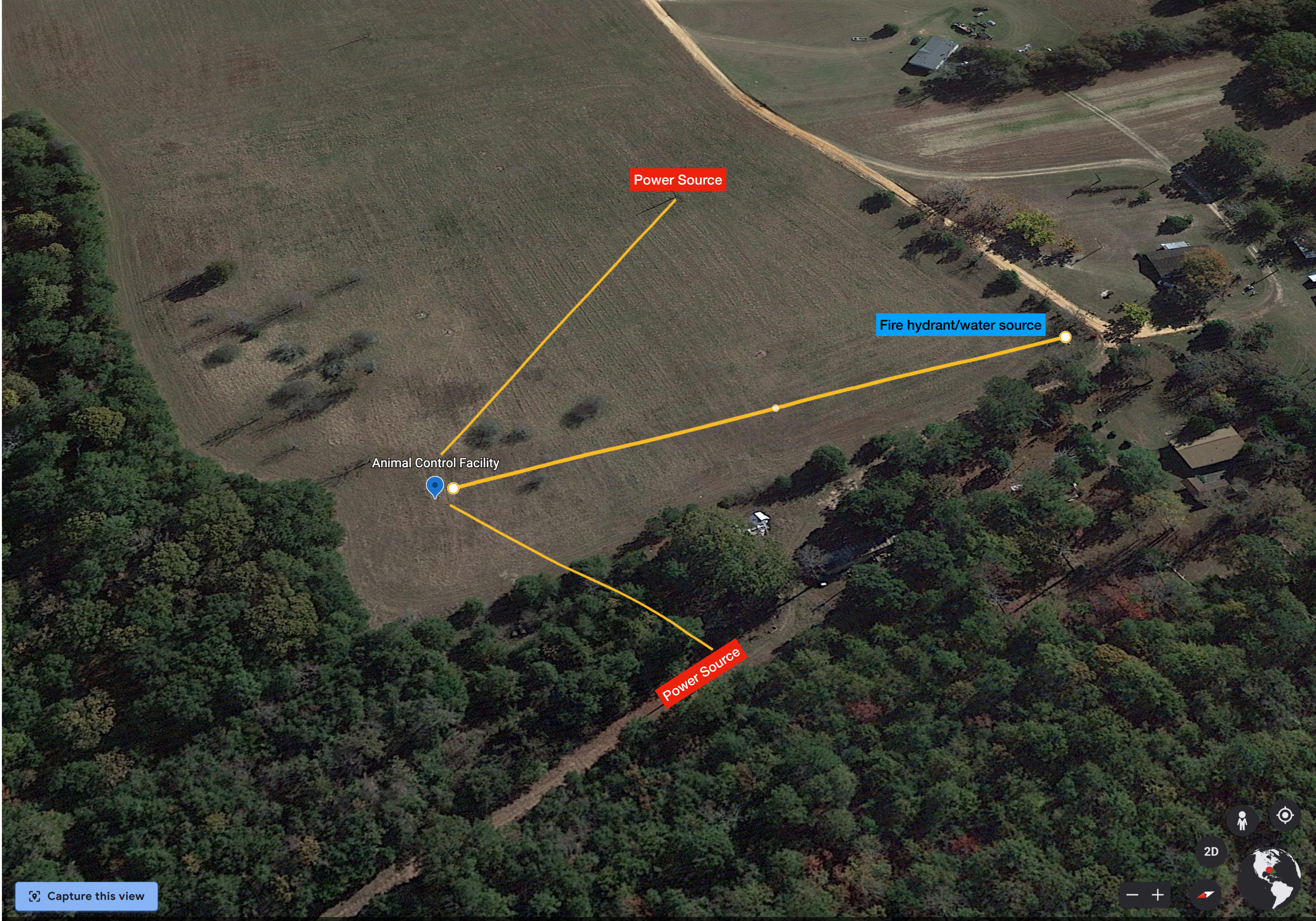


Office area

Side Cabin - 14x32

Design will be for front of rear drop off and pick-up





Power Source

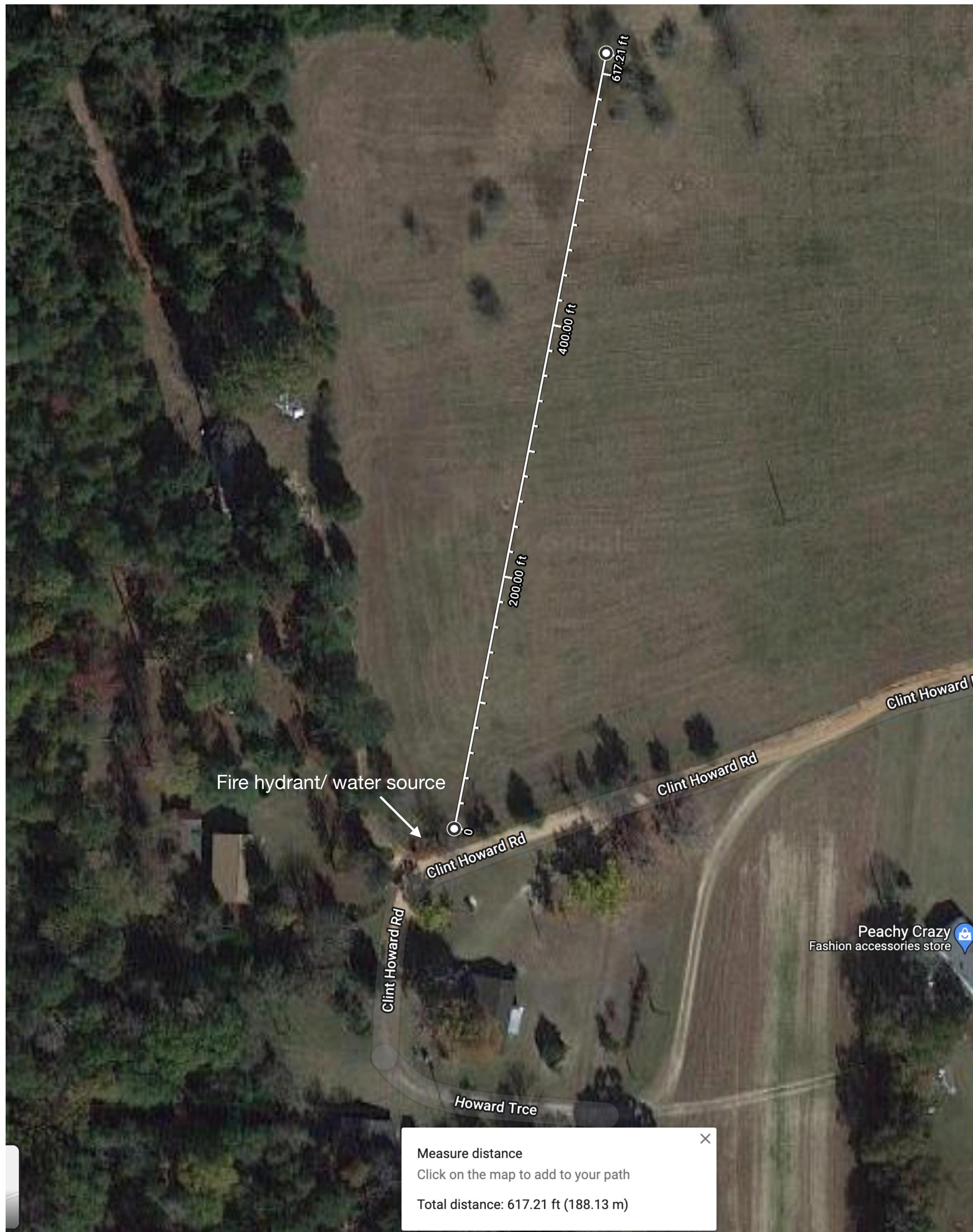
Fire hydrant/water source

Animal Control Facility

Power Source

Capture this view

A set of standard map navigation controls including a person icon for street view, a compass, a 2D/3D toggle, a zoom in (+) and zoom out (-) button, a north arrow, and a globe icon for location search.



Housers Mill Rd

Clint Howard Road



184.89 acres





Old house needs to be conditioned but could compliment animal control in many ways as a mixed usage facility