

OTERO/GREEN TREE REGIONAL LANDFILL CELL #5

OTERO COUNTY

NEW MEXICO

JANUARY 2018

PROJECT DESCRIPTION

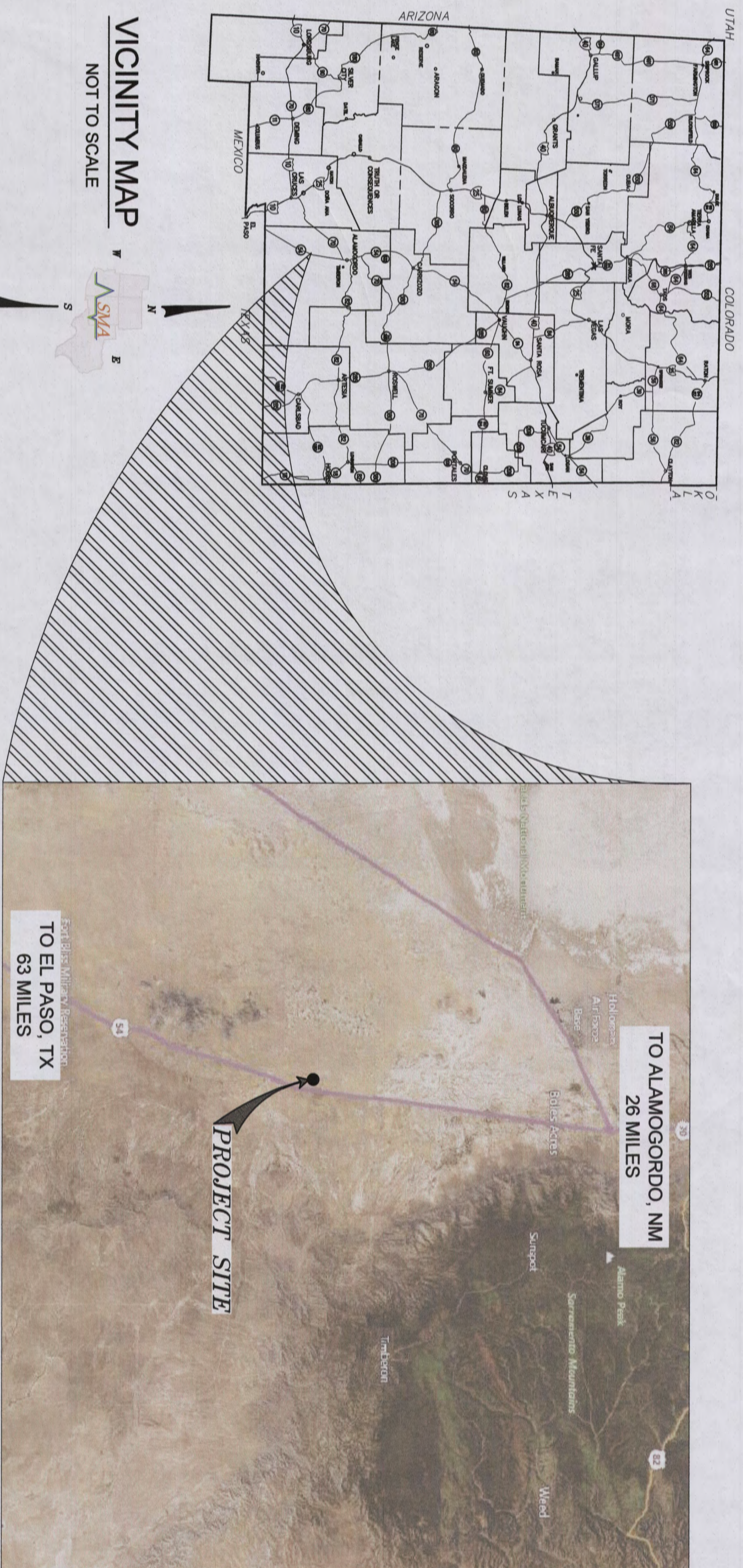
- THIS PROJECT CONSISTS OF THE FOLLOWING IMPROVEMENTS
- CONSTRUCT CELL #5
 - CONSTRUCT LEACHATE COLLECTION SUMP
 - INSTALL LEACHATE COLLECTION SYSTEM PIPING

GENERAL NOTES

- THERE WILL BE A PERSON OR PERSONS (HEREINAFTER KNOWN AS THE OWNER REPRESENTATIVE) CHOSEN BY THE CITY (HEREINAFTER KNOWN AS THE OWNER) TO ACT AS A CONTRACT PERSON BETWEEN THE OWNER AND THE ENGINEER. THE OWNER REPRESENTATIVE WILL OBSERVE AND PROVIDE INFORMATION AND PROVIDE CRITICAL LOCATIONS THROUGH THE ENGINEER TO THE CONTRACTOR IN THE FIELD.
- SOUDER, MILLER AND ASSOCIATES SHALL HEREINAFTER BE KNOWN AS THE ENGINEER. THERE WILL BE A PERSON PROVIDED BY THE ENGINEER THAT WILL ACT AS A CONSTRUCTION OBSERVER WHO WILL BE THE CONTACT FOR QUESTIONS FROM THE CONTRACTOR TO THE ENGINEER.
- THE CONTRACTOR IS SOLELY RESPONSIBLE FOR CONSTRUCTING THE PROJECT ACCORDING TO NEW MEXICO STANDARD SPECIFICATIONS FOR PUBLIC WORKS CONSTRUCTION (MSMSTW) SECTIONS 701, 801 AND 802.
- CONTRACTOR IS SOLELY RESPONSIBLE FOR UTILITY LOCATION, PROTECTION AND VERIFICATION. CONTRACTOR MUST NOTIFY NEW MEXICO ONE CALL SYSTEM, INC. AT 1-800-321-2537, AND ALL LOCAL UTILITY PROVIDERS, THREE (3) DAYS BEFORE STARTING UTILITY LINE CONSTRUCTION.
- THE CONTRACTOR WILL UPDATE SETS OF "AS-BUILT" DRAWINGS FOR THE PROJECT AND DELIVER TWO (2) SETS OF THESE DRAWINGS WITH RED LINES TO THE OWNER UPON COMPLETION OF THE PROJECT.
- IN THE EVENT THAT THE CONTRACTOR ENCOUNTERS ITEMS OF HISTORICAL IMPORTANCE, THE ENGINEER SHALL BE NOTIFIED IMMEDIATELY AND WORK IN THE AREA SHALL IMMEDIATELY CEASE UNTIL THE SITE CAN BE CLEARED PROPERLY.
- EXCAVATION INCLUDING COMPACTION AND FINE GRADING OF BOTH THE LANDFILL AND LEACHATE EVAPORATION POND WILL BE COMPLETED UNDER SEPARATE CONTRACT ASSURANCE (CCA) PLAN PERTAINING TO THE PROJECT.
- CONTRACTOR SHALL FOLLOW THE QUALITY CONSTRUCTION ASSURANCE (QCA) PLAN PERTAINING TO THE PROJECT PLANS AND SPECIFICATIONS.
- CONTRACTOR TO PHYSICALLY VERIFY LINER AND LEACHATE LINE LOCATION (BOTH HORIZONTAL AND VERTICAL) PRIOR TO ENGAGING IN CUT AND FILL ACTIVITIES.

SHEET INDEX

SHEET NUMBER	SHEET NAME
G100	COVER SHEET
C100	SURVEY CONTROL
C101	CELL #5 GRADING PLAN
C102	CELL #5 CROSS SECTIONS
C103	CELL #5 CROSS SECTIONS
C104	CELL #9 CROSS SECTIONS
D100	COVER, LINER AND LEACHATE COLLECTION DETAILS
D101	BOLLARD AND CLEANOUTS DETAILS
D102	COLLECTION SUMP DETAILS
D103	LINER CONNECTION & CONSTRUCTION DETAILS



LOCATION MAP
NOT TO SCALE

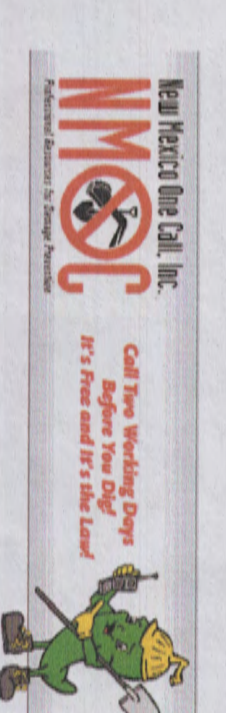
PREPARED BY:
THESE DETAILED PLANS AND SPECIFICATIONS WERE PREPARED UNDER MY DIRECTION AND SUPERVISION ON BEHALF OF SOUDER, MILLER AND ASSOCIATES.

Karl E. Touvander

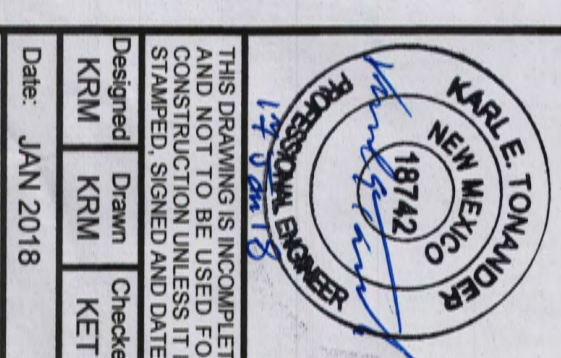
KARL E. TOUVANDER, NEW MEXICO PE 18742
PROJECT ENGINEER

DATE: 17 Jan 18

PREPARED FOR
CITY OF ALAMOGORDO
2600 NORTH FLORIDA AVE.
ALAMOGORDO, NEW MEXICO 88310
TELE: (575) 439-4240



To Request a Line Location: Dial 811
New Mexico One Call requires everyone involved in any excavation to provide at least two working days notice to the utility owners to mark the location of any underground lines or take other appropriate measures to protect them.



OTERO COUNTY ALAMOGORDO, NM
GREENTREE REGIONAL LANDFILL CELL #5
OTERO COUNTY, NM
COVER SHEET

SOUDER, MILLER & ASSOCIATES
3500 Sedona Hills Parkway
Las Cruces, NM 88011
Phone (575) 647-0799 Toll-Free (800) 647-0799 Fax (575) 647-0680
www.soudermiller.com
Serving the Mountain West
Albuquerque, Carlsbad, Hobbs, Farmington, Las Cruces, Roswell, Santa Fe, NM
Corral, Grand Junction, Lakewood, CO - Sedro, AZ - Moho, UT - El Paso, TX

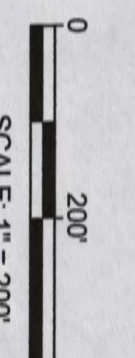
Rev #	Date	Description	By	Chk'd

SMMA
Engineering • Environmental
Surveying
3500 Sedona Hills Pkwy
Las Cruces, NM 88011
Phone: (575) 647-0799 Toll Free: (800) 647-0799 Fax: (575) 647-0680
www.soudermiller.com
Serving the Mountain West
Albuquerque, Carlsbad, Hobbs, Farmington, Las Cruces, Roswell, Santa Fe, NM
Corral, Grand Junction, Lakewood, CO - Sedro, AZ - Moho, UT - El Paso, TX



NOTE:
 PHOTOGRAPHY NOT PREPARED BY SMA FOR THIS SPECIFIC PROJECT. AERIAL PHOTOGRAPHS ACQUIRED FROM RECORD AND/OR PUBLICLY ACCESSIBLE SOURCES.
 PROJECT INFORMATION OVERLAIN ON RECORD AERIAL PHOTOGRAPHY FOR REFERENCE ONLY.

1
SURVEY CONTROL
 SCALE: 1"=200'



To Request a Live Location 811
 New Mexico state law requires everyone involved in any excavation to provide at least two working days' notice to owners of underground facilities when a dig is planned. All facility owners are then required to mark the locations of any underground lines or take other appropriate measures to protect them.

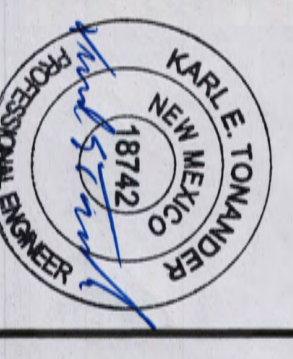
© Copyright 2018 Souder, Miller & Associates - All Rights Reserved

P:\4-Otero-Greentree RLF-Cell #5 (4323139)\CAD\CIVIL\FINAL CONSTRUCTION DWG 01-17-2018\BC Sheets\May17.dwg 1/17/2018 7:44:13 AM TWO

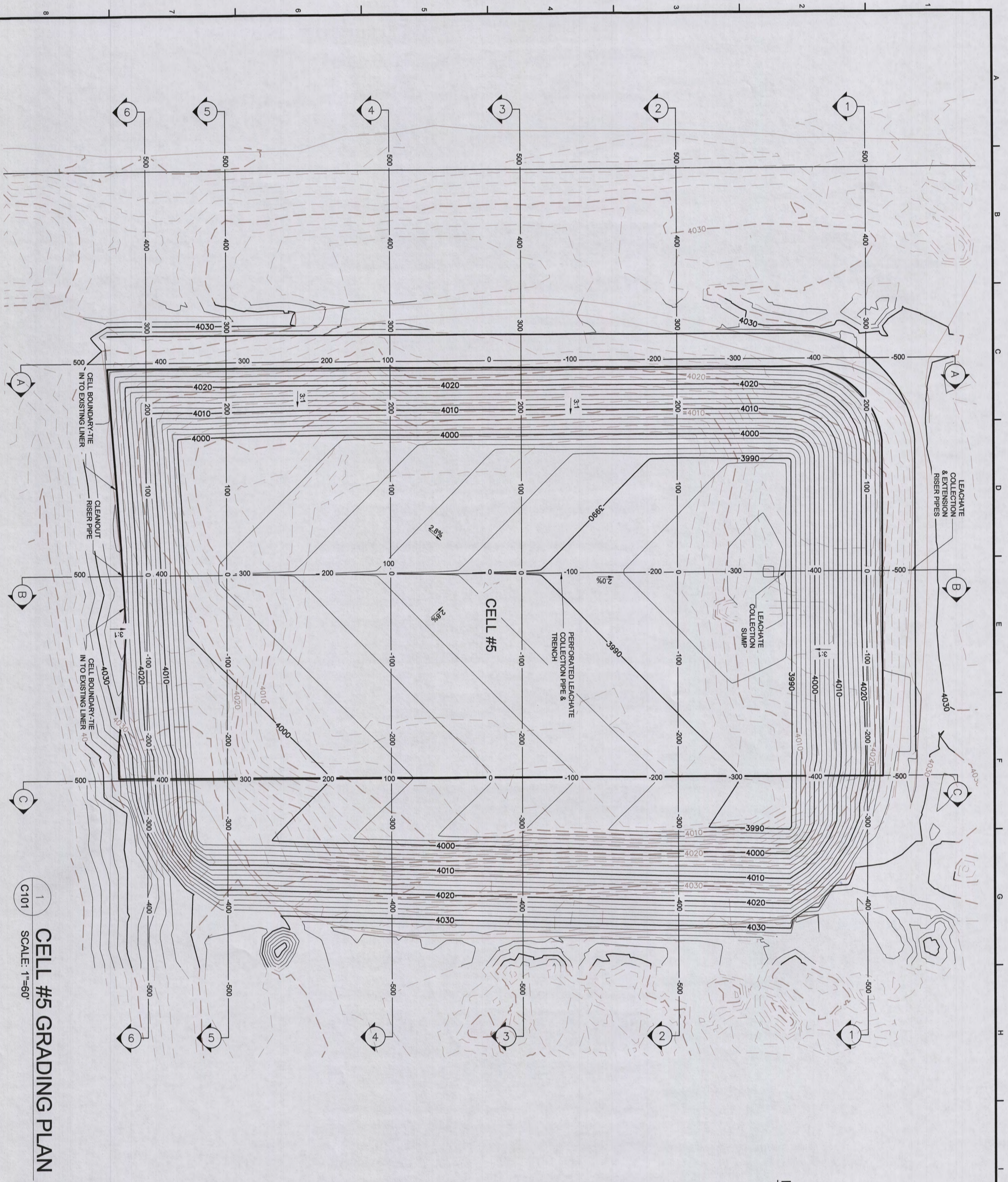
Rev #	Date	Description	By	Chk'd

SOUDER, MILLER & ASSOCIATES
 3500 Sedona Hills Parkway
 Las Cruces, NM 88011
 Phone (575) 647-0799 Toll-Free (800) 647-0799 Fax (575) 647-0680
 www.soudermiller.com
 Serving the Mountain West
 Albuquerque, Carlsbad, Hobbs, Farmington, Las Cruces, Roswell, Santa Fe, NM
 Cortez, Grand Junction, Lakewood, CO - Safford, AZ - Moab, UT - El Paso, TX

OTERO COUNTY ALAMOGORDO, NM
GREENTREE REGIONAL LANDFILL CELL #5
 OTERO COUNTY, NM
 SURVEY CONTROL

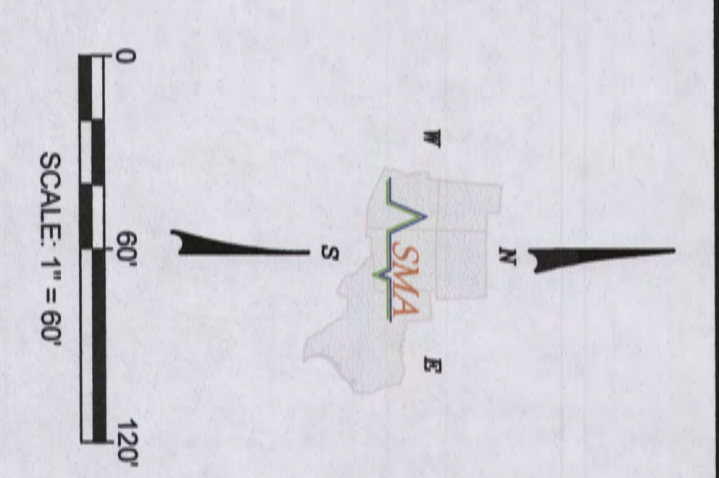


THIS DRAWING AND SPECIFICATIONS ARE TO BE USED FOR THE PROJECT DESCRIBED AND DATED AS SHOWN.
 Date: JAN 2018
 Scale: Horizontal: 1"=100'
 Vertical: N/A
 Project No: 4323139
 Sheet: C100



CELL #5 GRADING PLAN
 SCALE: 1"=60'

- LEGEND:**
- XXXX— EXISTING (NATURAL) MAJOR CONTOUR
 - XXXX— EXISTING (NATURAL) MINOR CONTOUR
 - XXXX— PROPOSED MAJOR CONTOUR
 - XXXX— PROPOSED MINOR CONTOUR



CELL #5
 ACRES: 18.6
 EARTHWORK:
 CUT: 280,624 CU. YD.
 FILL: 10,521 CU. YD.
 NET: 250,103 CU. YD.

NOTE: VALUES ARE BASED ON BANK TO BANK MEASUREMENTS. NO ADJUSTMENT FOR SHRINKSWELL FACTORS.



To Request a Line Location: 1811 811

Best Practice which has machine equipment involved in any operation to provide at least two working days notice to owners of underground facilities when a dig is planned. All facility owners are then required to mark the locations of any underground lines or take other appropriate measures to protect them.

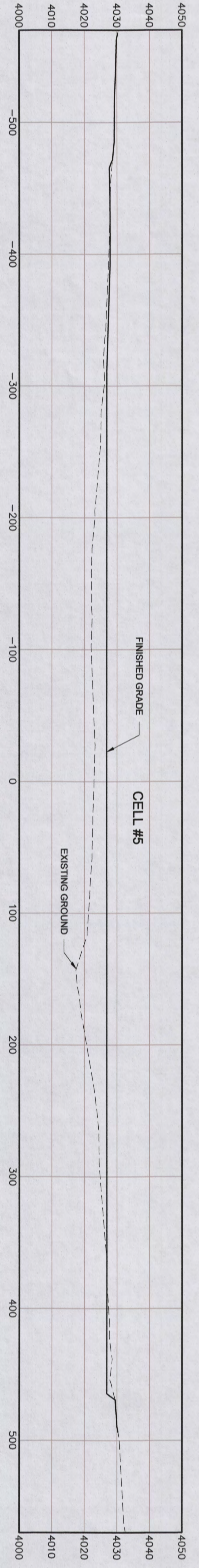
Rev #	Date	Description	By	Chk'd

SOUDEY, MILLER & ASSOCIATES
 3500 Sedona Hills Parkway
 Las Cruces, NM 88011
 Phone (575) 647-0799 Toll-Free (800) 647-0799 Fax (575) 647-0680
 www.soudeymiller.com
 Serving the Mountain West
 Albuquerque, Carlsbad, Hobbs, Farmington, Las Cruces, Roswell, Santa Fe, NM
 Cortez, Grand Junction, Lakewood, CO - Safford, AZ - Moab, UT - El Paso, TX

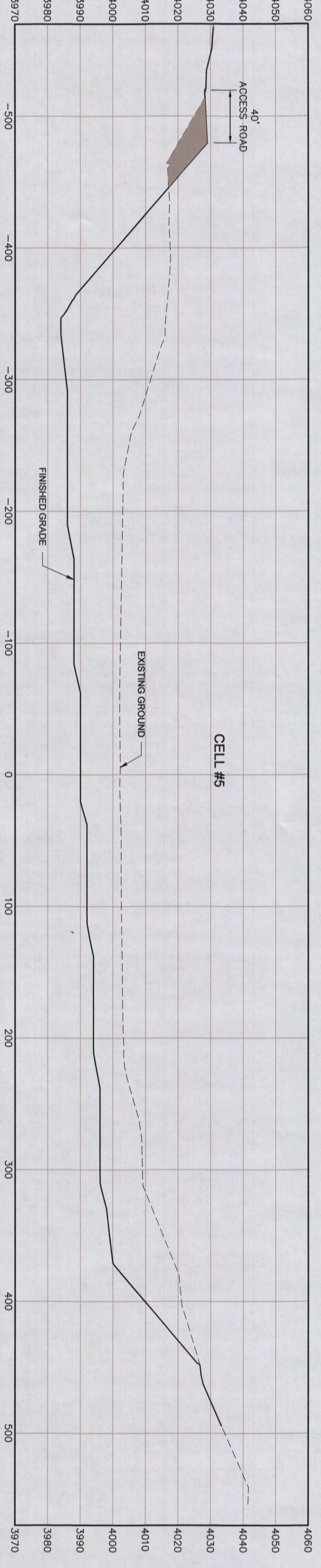
OTERO COUNTY ALAMOGORDO, NM

GREENTREE REGIONAL LANDFILL CELL #5
OTERO COUNTY, NM
CELL #5 GRADING PLAN

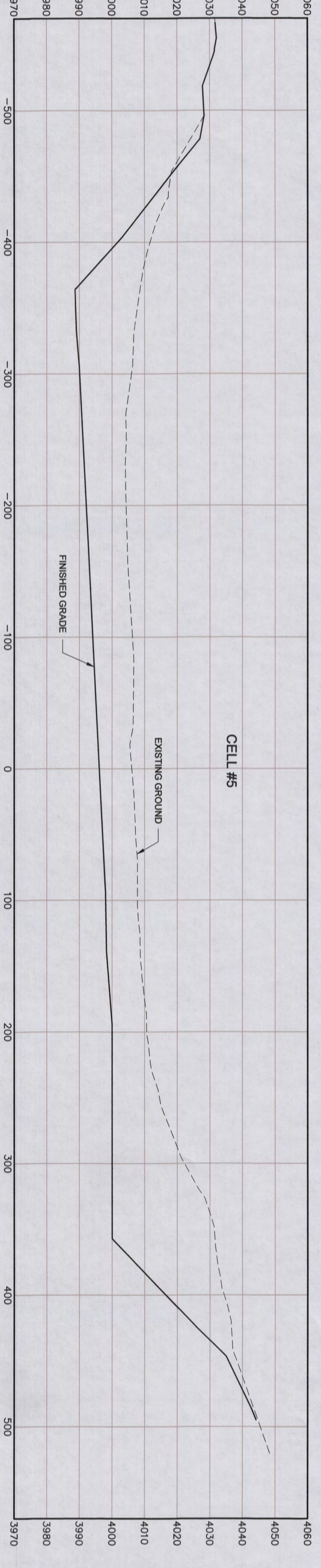
THIS DRAWING IS UNLESS OTHERWISE NOTED TO BE USED FOR STRAINED, STRESSED AND DATED	Designed	Checked
	KRM	KET
Date: JAN 2018	Scale: Horiz: 1"=100'	Vert: N/A
Project No: 4323139	Sheet: C-101	




A
CROSS SECTION
 SCALE: HORIZONTAL: 1"=50'
 VERTICAL: 1"=20'



B
CROSS SECTION
 SCALE: HORIZONTAL: 1"=50'
 VERTICAL: 1"=20'



C
CROSS SECTION
 SCALE: HORIZONTAL: 1"=50'
 VERTICAL: 1"=20'

LEGEND:
 RE-ESTABLISH BANK
 COMPACTED MATERIAL

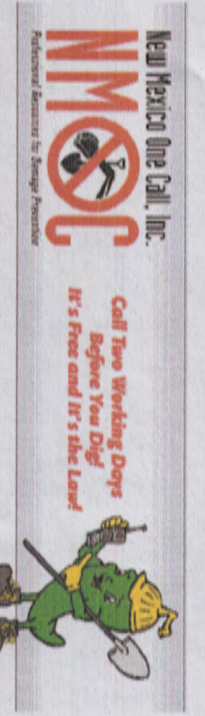
Rev #	Date	Description	By	Chk'd

SOUDER, MILLER & ASSOCIATES
 3500 Sedona Hills Parkway
 LAS CRUCES, NM 88011
 Phone (575) 647-0799 Toll-Free (800) 647-0799 Fax (575) 647-0680
 www.soudermiller.com
 Serving the Mountain West
 Albuquerque, Carlsbad, Hobbs, Farmington, Las Cruces, Roswell, Santa Fe, NM
 Cortez, Grand Junction, Lakewood, CO - Safford, AZ - Moab, UT - El Paso, TX

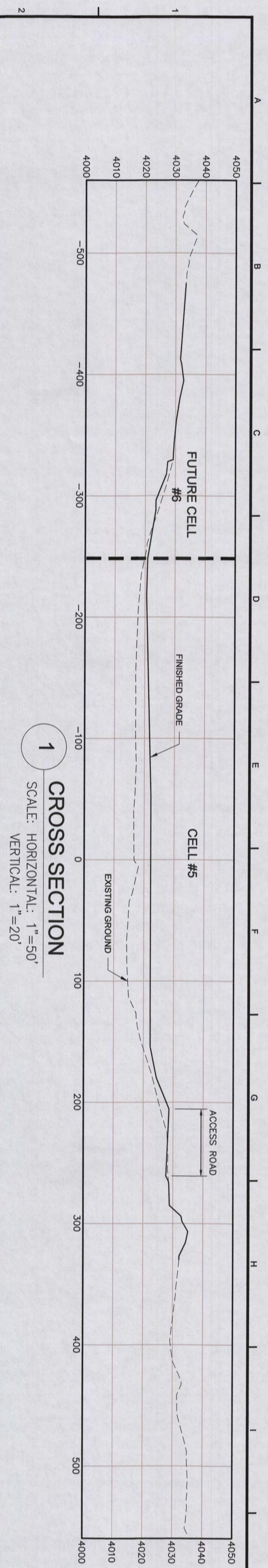
OTERO COUNTY ALAMOGORDO, NM
GREENTREE REGIONAL LANDFILL CELL #5
 OTERO COUNTY, NM
CELL #5 CROSS SECTIONS

KARLE TOLKNER
 PROFESSIONAL ENGINEER
 (18742)
 NEW MEXICO
 12/27/2018

THIS DRAWING IS INCOMPLETE AND NOT TO BE USED FOR CONSTRUCTION. IT IS FOR STAFF REVIEW ONLY. STRAWED, SIGNED AND DATED
 Designed/Drawn/Checked/Stamped
 KRM/KRM/KET
 Date: JAN 2018
 Scale: Horiz: 1"=50'
 Vert: 1"=20'
 Project No: 4323139
 Sheet: C102



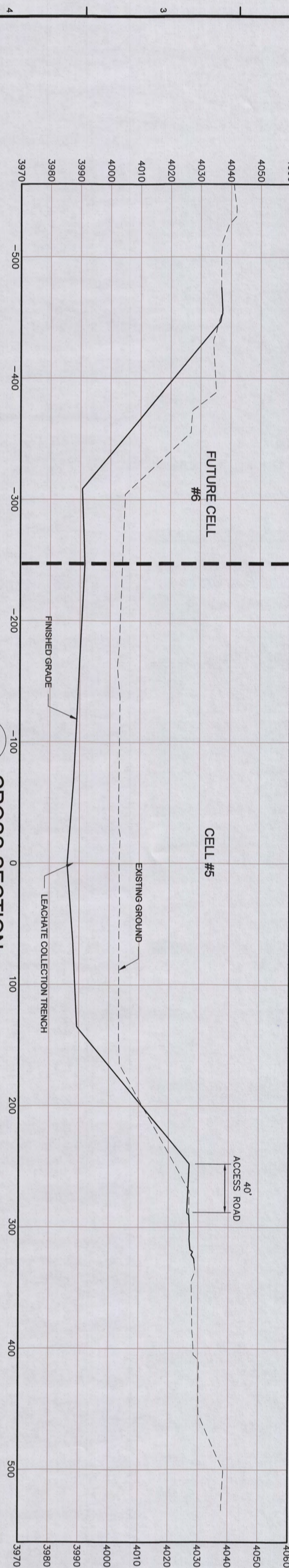
To Request a Live Locate Dial 811
 New Mexico state law requires everyone involved in any excavation to provide at least two working days' notice to owners of underground facilities when a dig is planned. All facility owners are then required to mark the locations of any underground lines or take other appropriate measures to protect them.



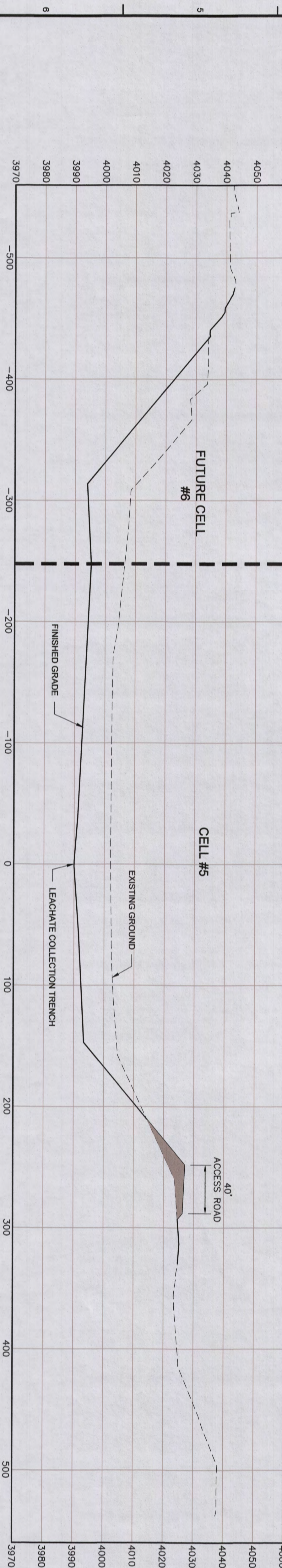
1
CROSS SECTION
 SCALE: HORIZONTAL: 1"=50'
 VERTICAL: 1"=20'

LEGEND:

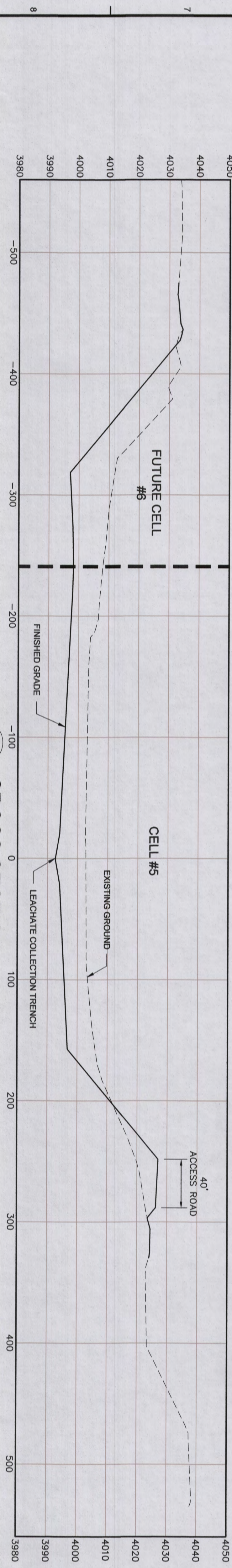
 RE-ESTABLISH BANK
 COMPACTED MATERIAL



2
CROSS SECTION
 SCALE: HORIZONTAL: 1"=50'
 VERTICAL: 1"=20'



3
CROSS SECTION
 SCALE: HORIZONTAL: 1"=50'
 VERTICAL: 1"=20'



4
CROSS SECTION
 SCALE: HORIZONTAL: 1"=50'
 VERTICAL: 1"=20'

Rev #	Date	Description	By	Chkd

SOUDEY, MILLER & ASSOCIATES
 3500 Sedona Hills Parkway
 LAS CRUCES, NM 88011
 Phone (575) 647-0799 Toll-Free (800) 647-0799 Fax (575) 647-0680
 www.soudermiller.com
 Serving the Mountain West
 Albuquerque, Carlsbad, Hobbs, Farmington, Las Cruces, Roswell, Santa Fe, NM
 Cortez, Grand Junction, Lakewood, CO - Safford, AZ - Moab, UT - El Paso, TX

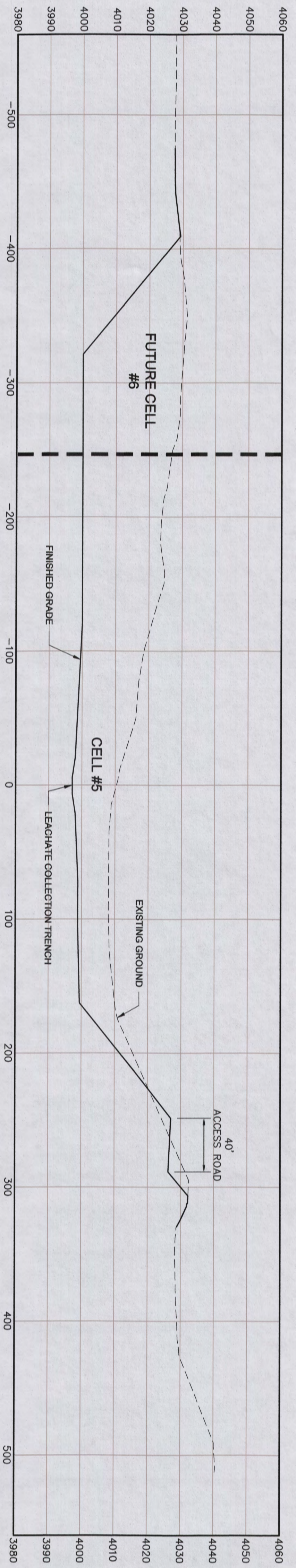
OTERO COUNTY ALAMOGORDO, NM
GREENTREE REGIONAL LANDFILL CELL #5
OTERO COUNTY
CELL #5 CROSS SECTIONS

KARLE TOLKAMER
 19742
 REGISTERED PROFESSIONAL ENGINEER
 12736418

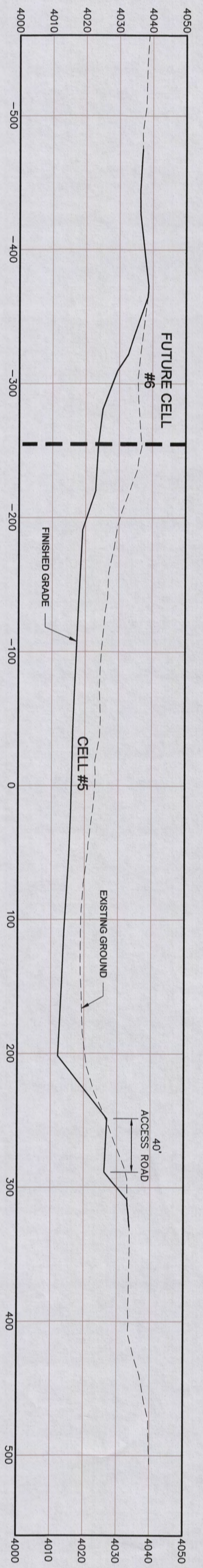
THIS DRAWING IS IN COMPLETE CONFORMANCE WITH THE RULES AND REGULATIONS OF THE BOARD OF PROFESSIONAL ENGINEERS AND SURVEYORS OF THE STATE OF NEW MEXICO.

MMOC
 Call Now, Working Days
 877-766-6677
 24 Hours a Day, 7 Days a Week

DATE: JAN 2018
SCALE: HORIZ: 1"=50' VERT: 1"=20'
PROJECT NO.: 4323139
SHEET: C103



5 CROSS SECTION
 SCALE: HORIZONTAL: 1" = 50'
 VERTICAL: 1" = 20'



6 CROSS SECTION
 SCALE: HORIZONTAL: 1" = 50'
 VERTICAL: 1" = 20'

LEGEND:
 RE-ESTABLISH BANK
 COMPACTED MATERIAL

Rev #	Date	Description	By	Chk'd

SOUDER, MILLER & ASSOCIATES
 3500 Sedona Hills Parkway
 Las Cruces, NM 88011
 Phone (575) 647-0799 Toll-Free (800) 647-0799 Fax (575) 647-0680
 www.soudermiller.com
 Serving the Mountain West
 Albuquerque, Carlsbad, Hobbs, Farmington, Las Cruces, Roswell, Santa Fe, NM
 Cortez, Grand Junction, Lakewood, CO - Safford, AZ - Moab, UT - El Paso, TX

OTERO COUNTY ALAMOGORDO, NM
GREENTREE REGIONAL LANDFILL CELL #5
 OTERO COUNTY
CELL #5 CROSS SECTIONS

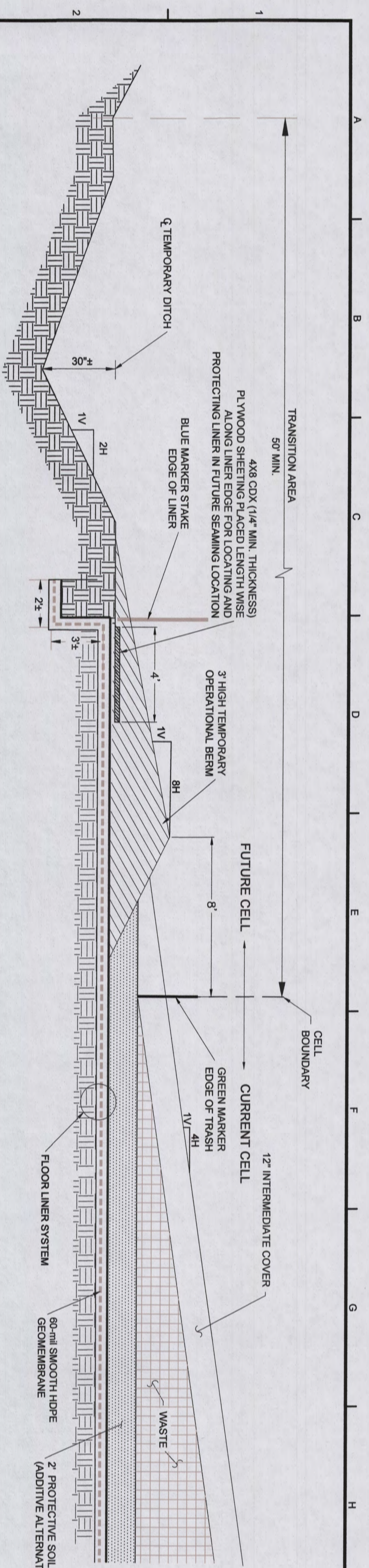


To Request a Line Location: Dial 811
 New Mexico state law requires everyone involved in any excavation to provide at least 48 hours notice to the utility companies whose lines may be affected. All Public Works or other appropriate measures to protect them.

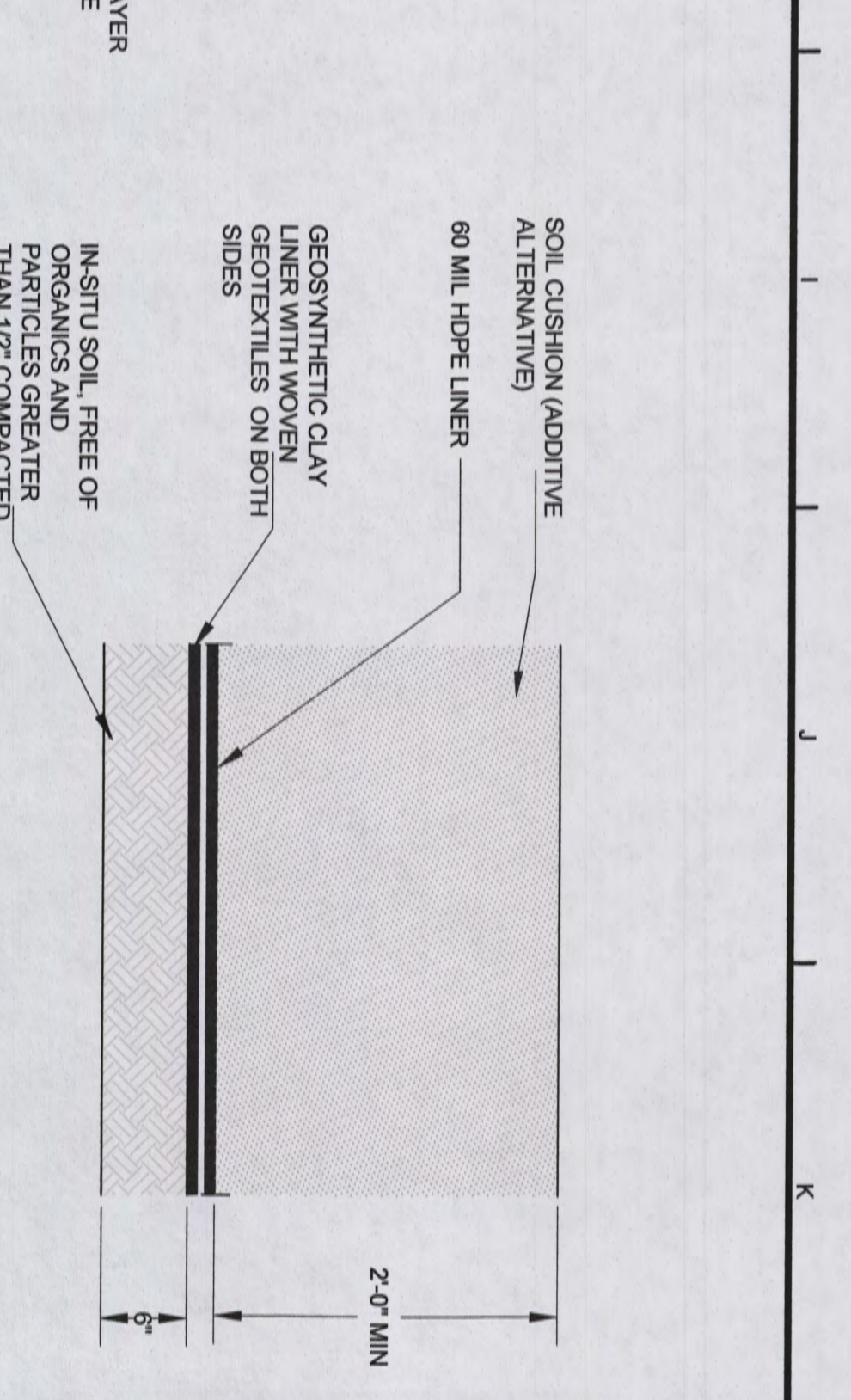
KARLE TOMANOSKI
 18712
 PROFESSIONAL ENGINEER
 STATE OF NEW MEXICO
 12/20/13

THIS DRAWING IS THE PROPERTY OF SOUDER, MILLER & ASSOCIATES. IT IS TO BE USED ONLY FOR THE PROJECT AND LOCATION SPECIFICALLY IDENTIFIED HEREON. IT IS NOT TO BE REPRODUCED, COPIED, OR TRANSMITTED IN ANY FORM OR BY ANY MEANS, ELECTRONIC OR MECHANICAL, INCLUDING PHOTOCOPYING, RECORDING, OR BY ANY INFORMATION STORAGE AND RETRIEVAL SYSTEM, WITHOUT THE WRITTEN PERMISSION OF SOUDER, MILLER & ASSOCIATES.

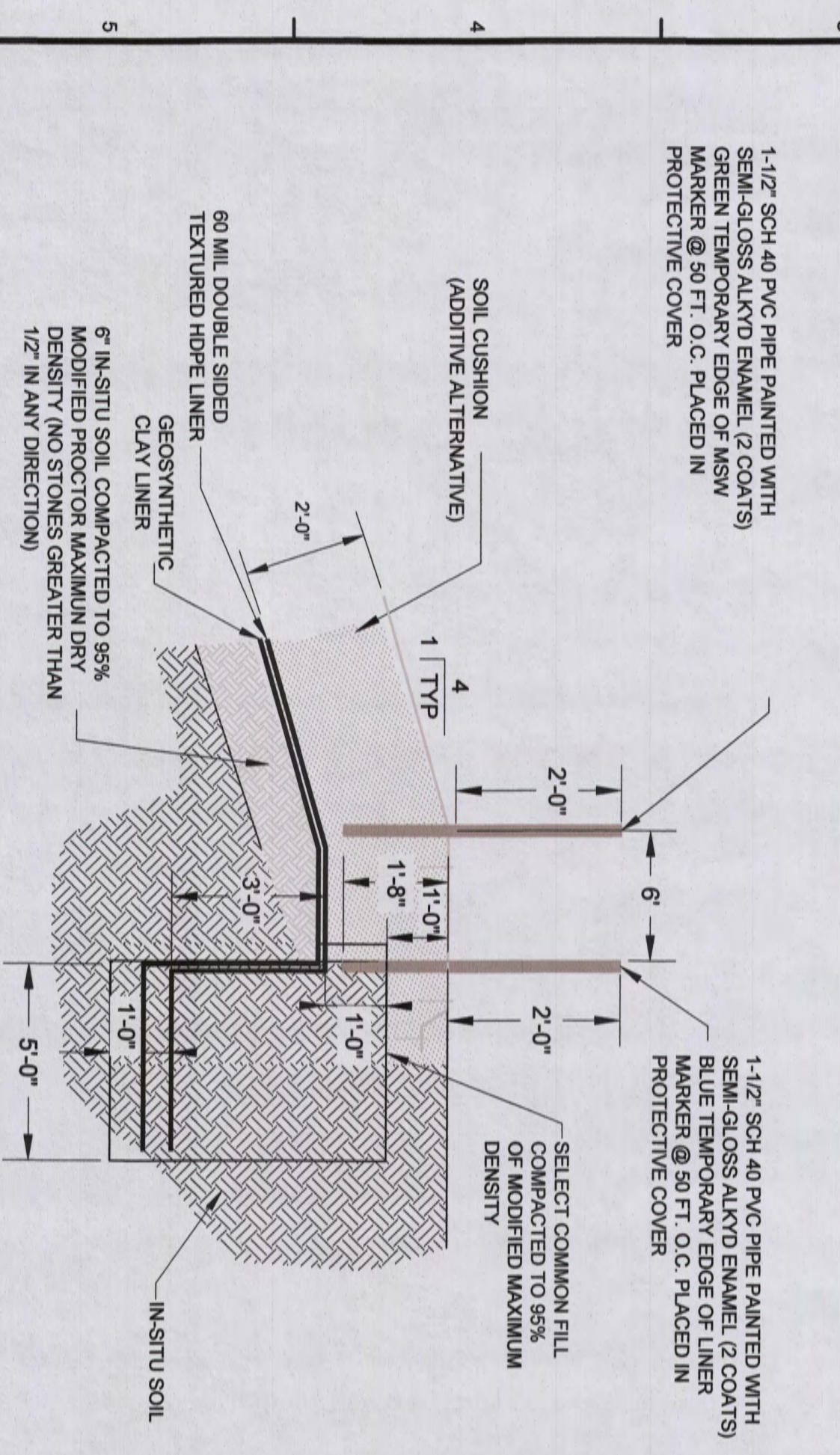
Project No: 4323139
 Date: JAN 2018
 Scale: Horiz: 1:50
 Vert: 1:10
 Sheet: **C104**



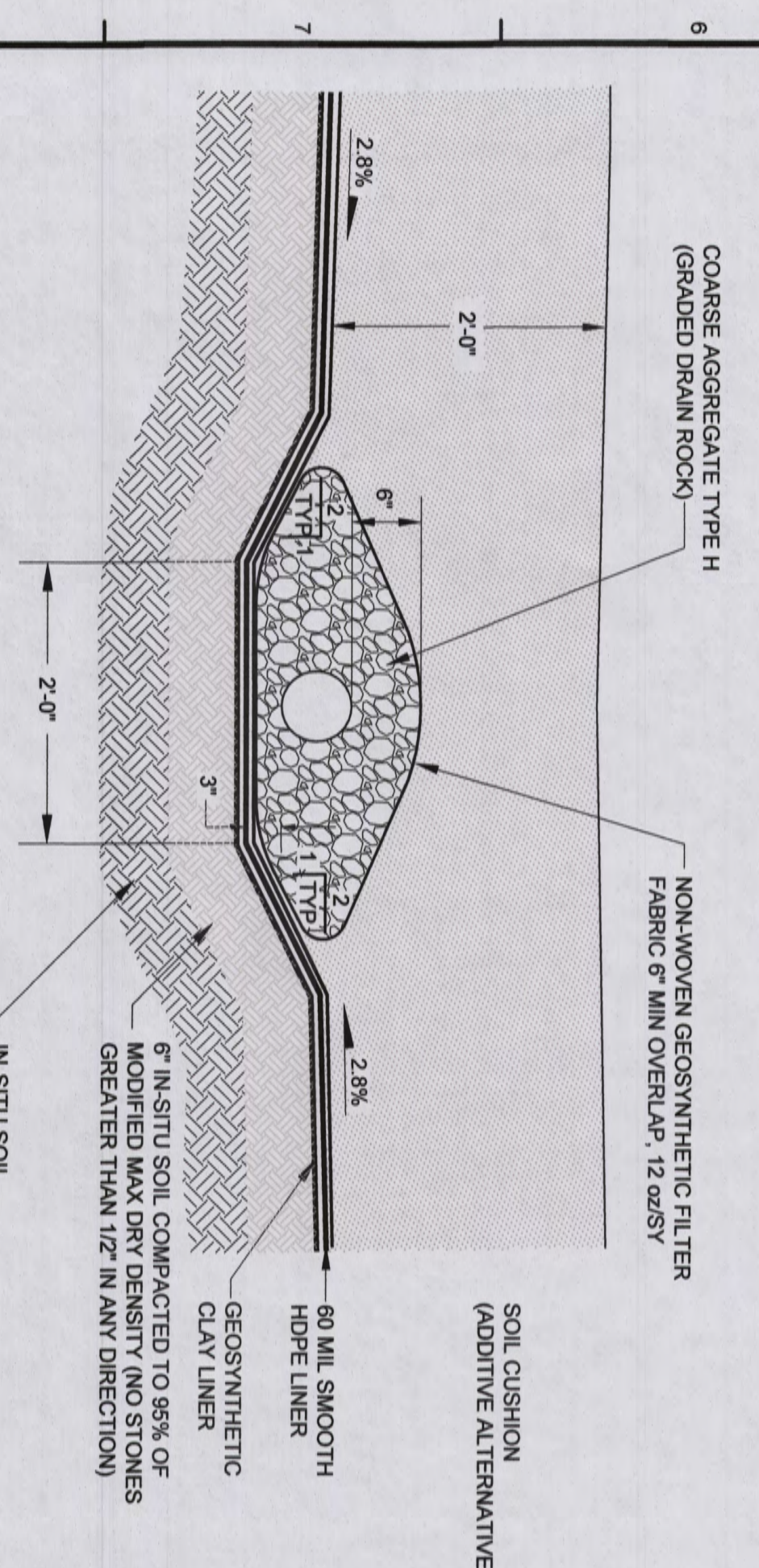
1 TYPICAL CELL TRANSITION AREA
D100 NOT TO SCALE



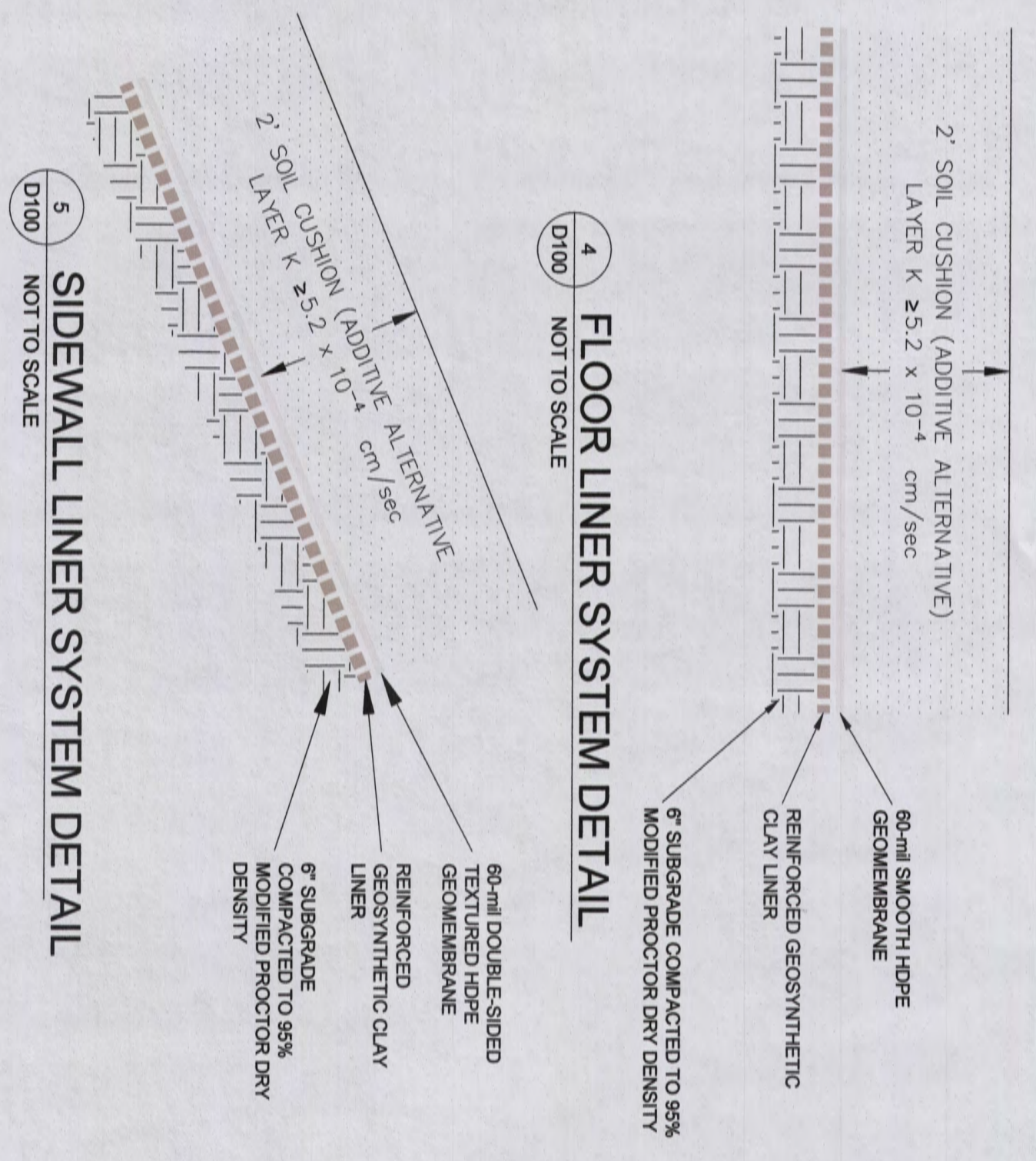
2 CROSS SECTION OF LINER SYSTEM
D100 NOT TO SCALE



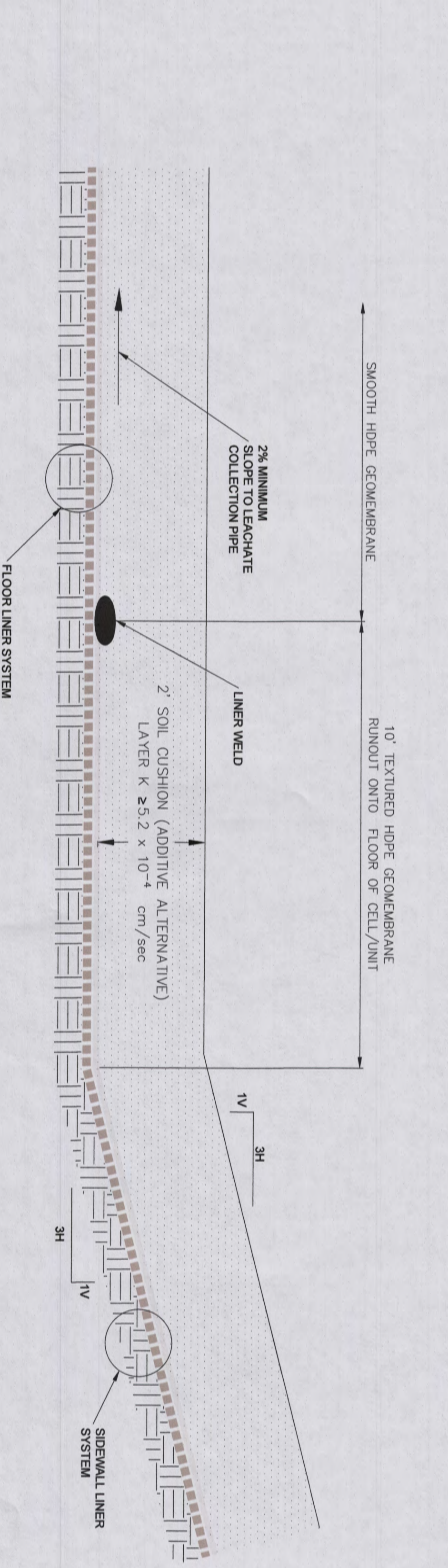
3 TYPICAL ANCHOR TRENCH DETAIL
D100 NOT TO SCALE



4 TYPICAL LEACHATE COLLECTION LATERAL SECTION
D100 NOT TO SCALE



5 FLOOR LINER SYSTEM DETAIL
D100 NOT TO SCALE



6 SIDEWALL LINER SYSTEM DETAIL
D100 NOT TO SCALE



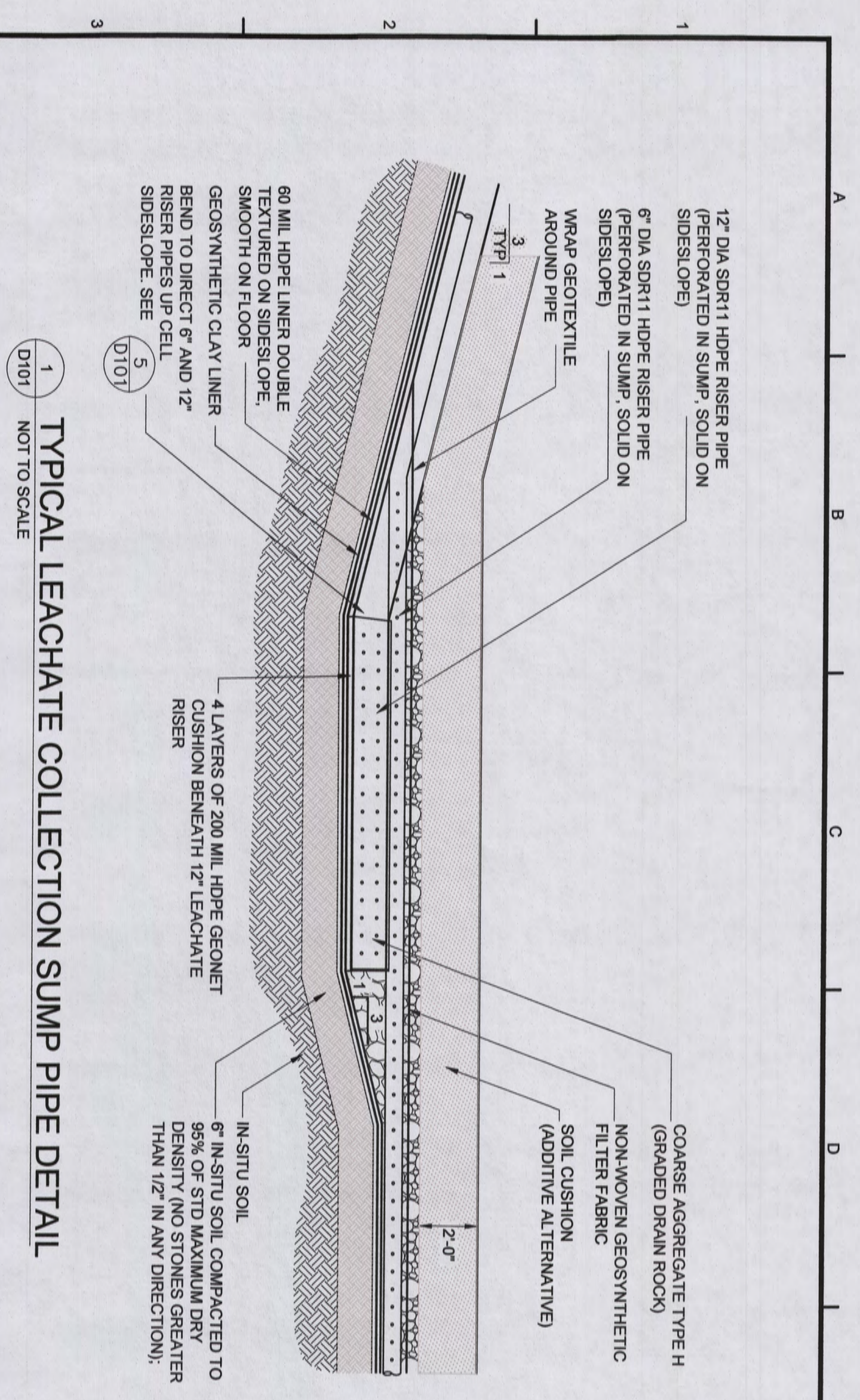
7 LINER TIE-IN SMOOTH TO TEXTURED LINER
D100 NOT TO SCALE

- NOTE:**
- SOIL COMPONENTS OF THE BASE LINER SYSTEM PLACED ON TOP OF GEOMEMBRANE LAYER (INCLUDING IN THE ANCHOR TRENCH AREA) TO HAVE A MAXIMUM PARTICLE SIZE OF 1/2".
 - THE PROTECTIVE SOIL LAYER ON THE LANDFILL FLOOR TO CONSIST OF A NON-CALCAREOUS EARTH FILL.
 - AGGREGATE USED IN THE LEACHATE COLLECTION SYSTEM SLOPES AND LEACHATE COLLECTION SYSTEM TRENCHES TO BE A CLEAN NON-CALCAREOUS GRANULAR MATERIAL, LESS THAN 2% PASSING THE 3/4" SIEVE, AND TO HAVE A MAXIMUM PARTICLE SIZE OF 1/2". ALL DIMENSIONS ARE MINIMUM VALUES UNLESS SPECIFIED OTHERWISE.
 - TEXTURED FILL (FLEXIBLE MEMBRANE LINER) SHALL BE USED ON ALL SLOPES EQUAL TO OR STEEPER THAN 10:1 (H:V) WITH VERTICAL RISE OF 10 FT. OR GREATER.
 - SMOOTH FILL SHALL BE USED ON ALL SLOPES LESS THAN 10:1 (H:V).
 - EARTH SURFACE UPON WHICH THE SOIL & HDPE LINER ARE TO BE INSTALLED SHALL MEET COMPACTION REQUIREMENTS CONSISTING OF A MINIMUM 6 NMAC SECTIONS 20.9.4.13E FOR SLOPE SECTIONS AND 95% MODIFIED PROCTOR DENSITY. ALL SUBGRADE PREPARATION SHALL CONFORM TO NMAC SECTIONS 20.9.4.13E FOR SLOPE SECTIONS AND 95% MODIFIED PROCTOR DENSITY.
 - OVER-EXCAVATION AND RE-COMPACTION REQUIRED TO MEET GEOTECHNICAL REQUIREMENTS WILL CONFORM TO NMAC SECTION 20.9.4.13E(3a).
 - TESTING AND QUALITY CONTROL TO CONFORM TO THE CONSTRUCTION QUALITY ASSURANCE PLAN (CQA) AS APPROVED BY NMEQ SOLID WASTE BUREAU IN ACCORDANCE WITH NMAC SECTION 20.9.4.14.
 - TEMPORARY MARKERS TO BE PLACED IN SOIL CUSHION LAYER DURING PLACEMENT OF SAND PROTECTIVE LAYER AND NOT DRIVEN INTO SOIL AFTER PLACEMENT OF PROTECTIVE LAYER. CONTRACTOR TO MAINTAIN MINIMUM OF 2" CLEARANCE BETWEEN BOTTOM OF TEMPORARY MARKER AND HDPE LINER TO ENSURE THAT THE LINER IS NOT PUNCTURED OR COMPROMISED BY THE TEMPORARY MARKER.
 - ALL DIMENSIONS INDICATED REPRESENT MINIMUM VALUES UNLESS OTHERWISE SPECIFIED.

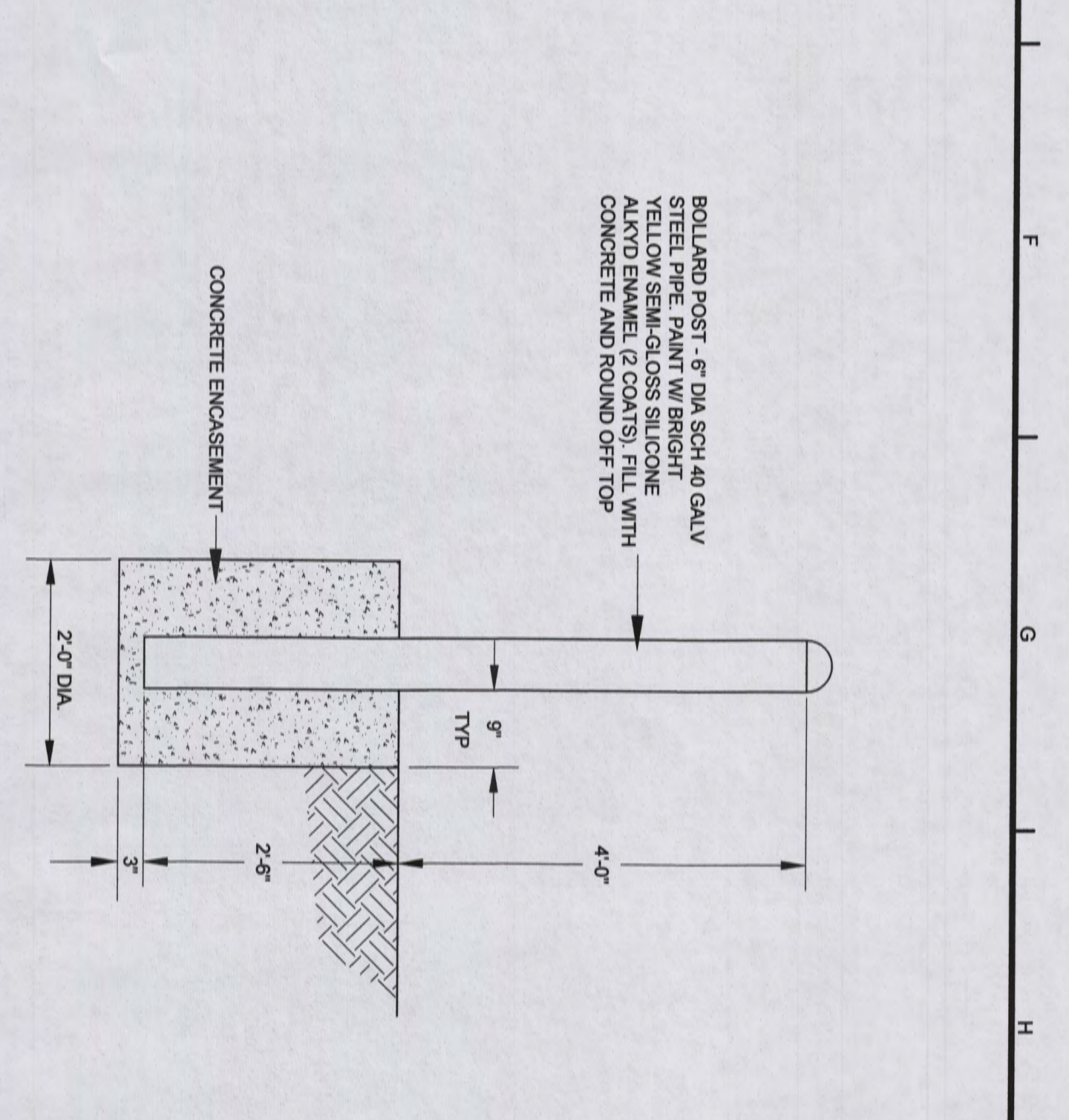
Rev #	Date	Description	By	Chk'd

OTERO COUNTY ALAMOGORDO, NM
GREENTREE REGIONAL LANDFILL CELL #5
 OTERO COUNTY
 COVER, LINER, AND LEACHATE COLLECTION DETAILS
 1:7.5x11.8
 KARL E. TOMANER
 NEW MEXICO
 18742
 12/15/2018

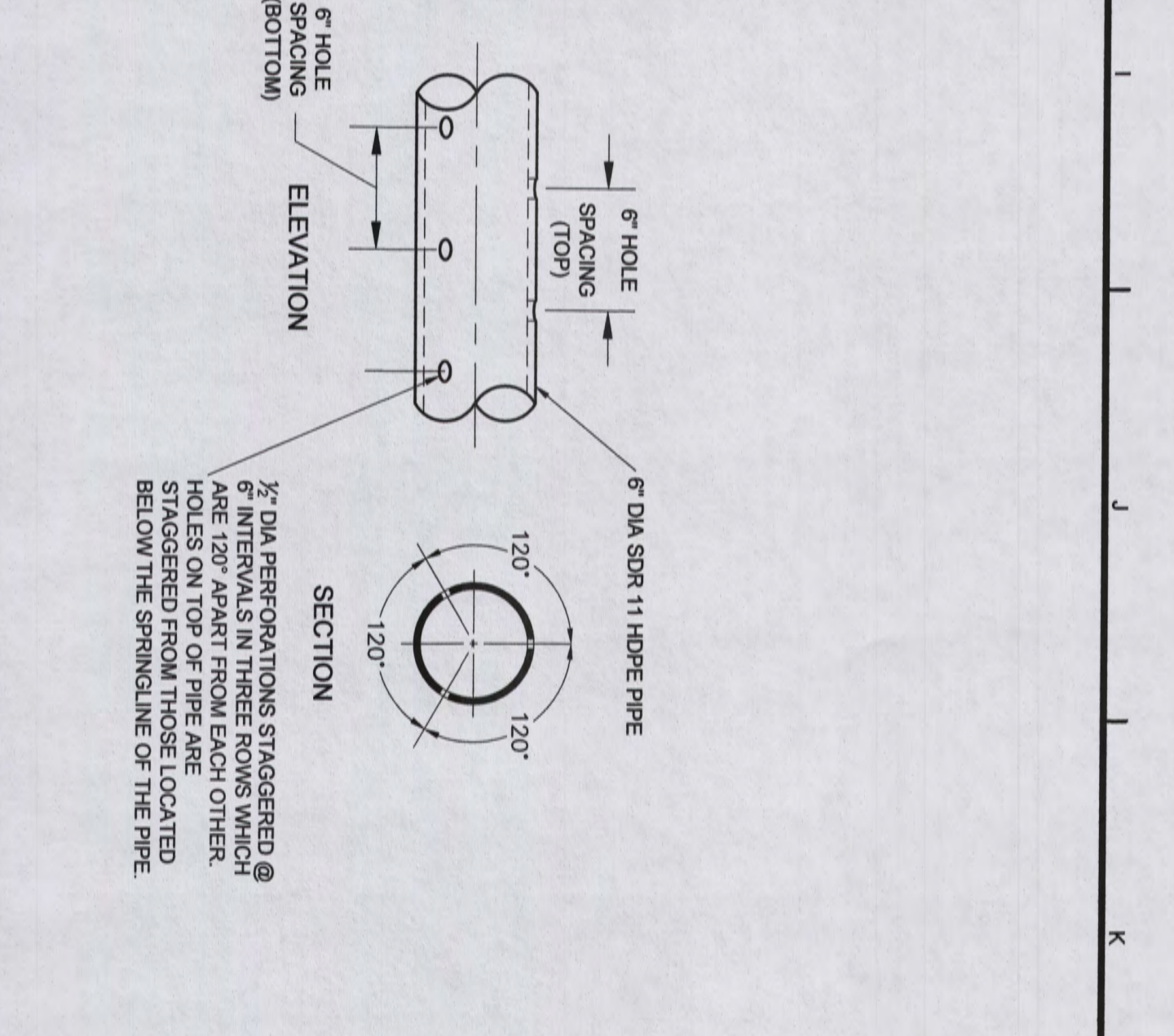
THIS DRAWING IS IN COMPLIANCE WITH THE REQUIREMENTS OF THE CONSTRUCTION INDUSTRY IN ITS STANDARD SPECIFICATIONS DATED 12/15/2018
 Drawn: KRM
 Checked: KRM
 Date: JAN 2018
 Scale: Horiz: N/A
 Vert: N/A
 Project No.: 4323139
 Sheet: D100



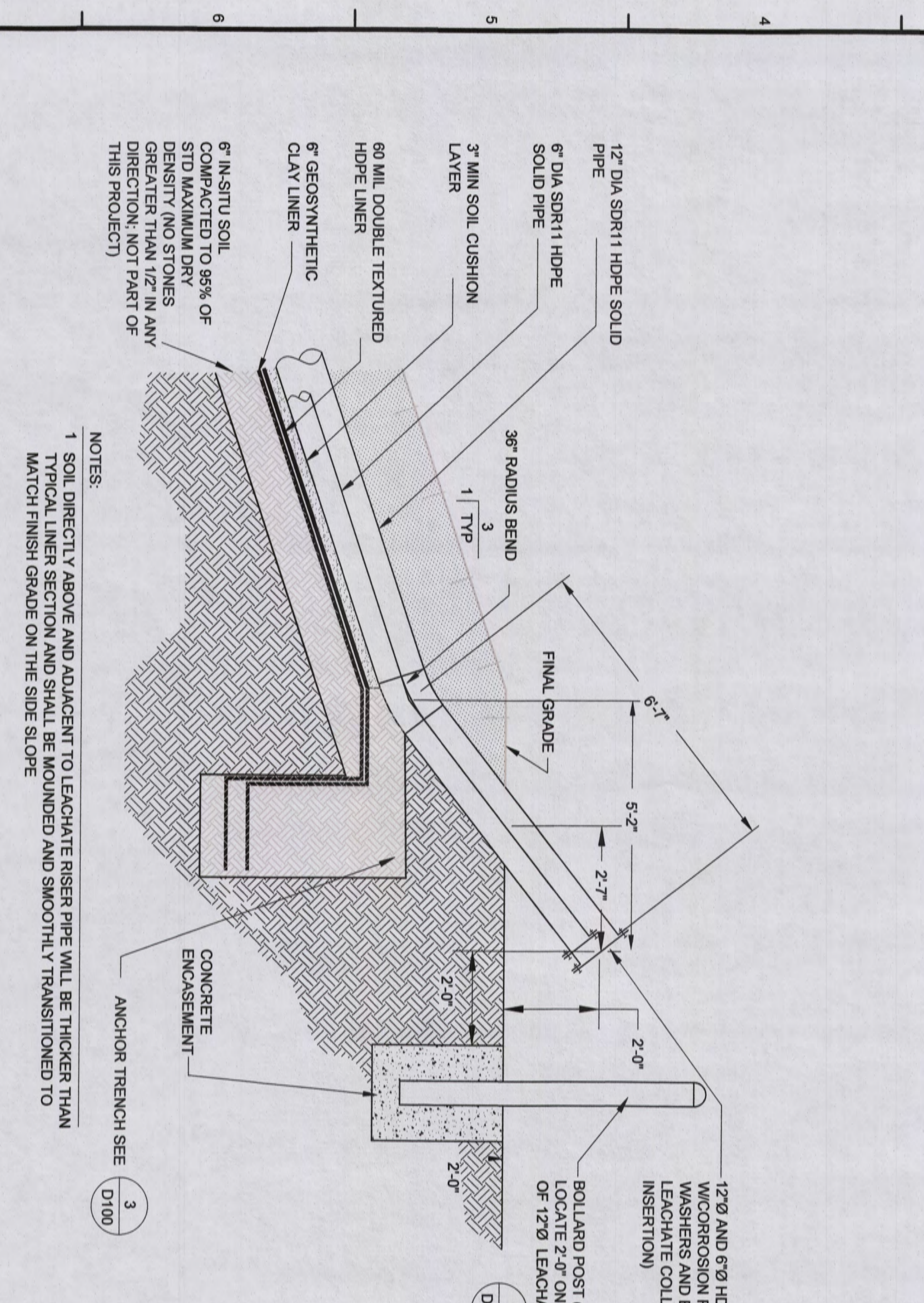
1 TYPICAL LEACHATE COLLECTION SUMP PIPE DETAIL
 D101 NOT TO SCALE



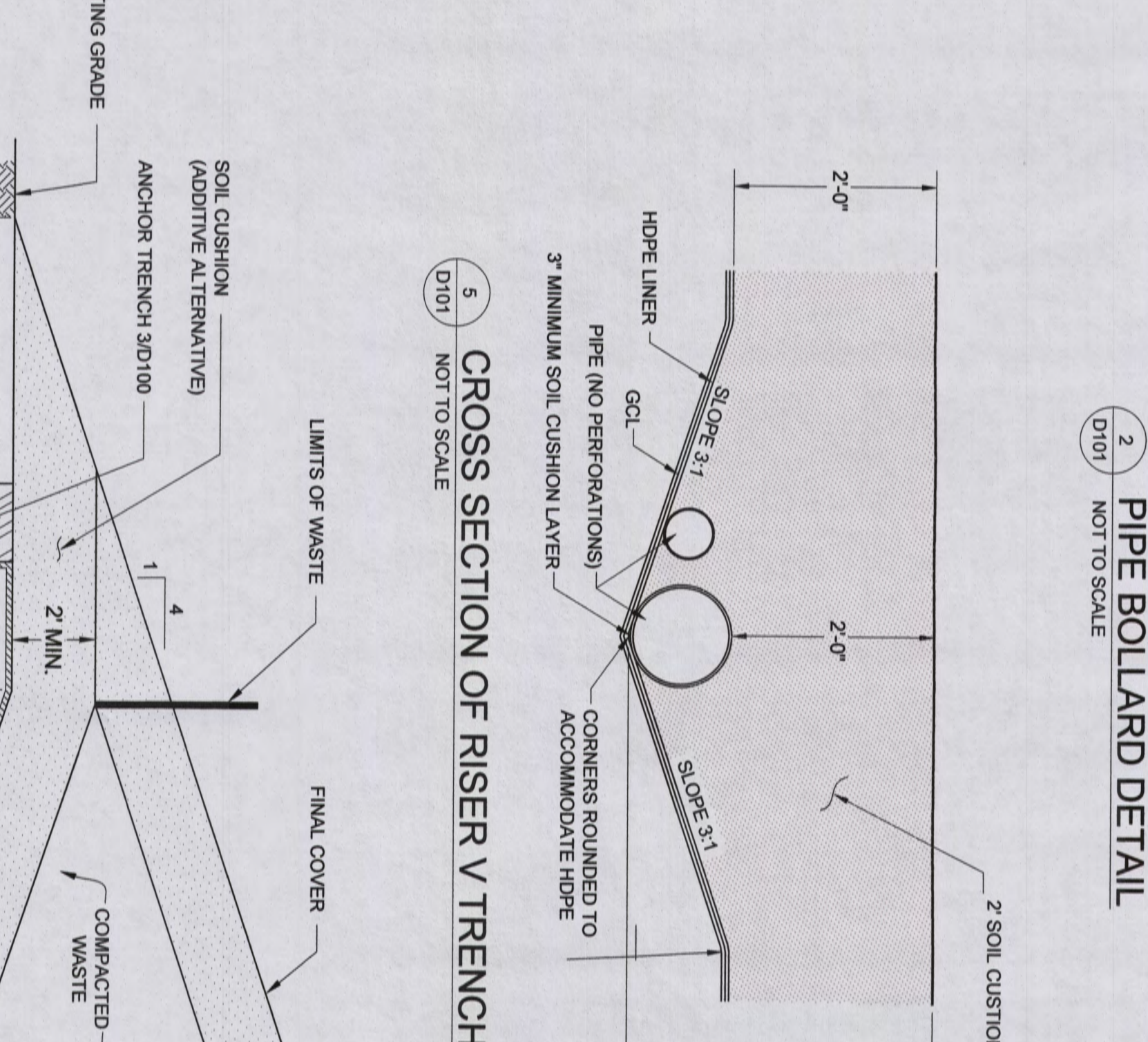
2 PIPE BOLLARD DETAIL
 D101 NOT TO SCALE



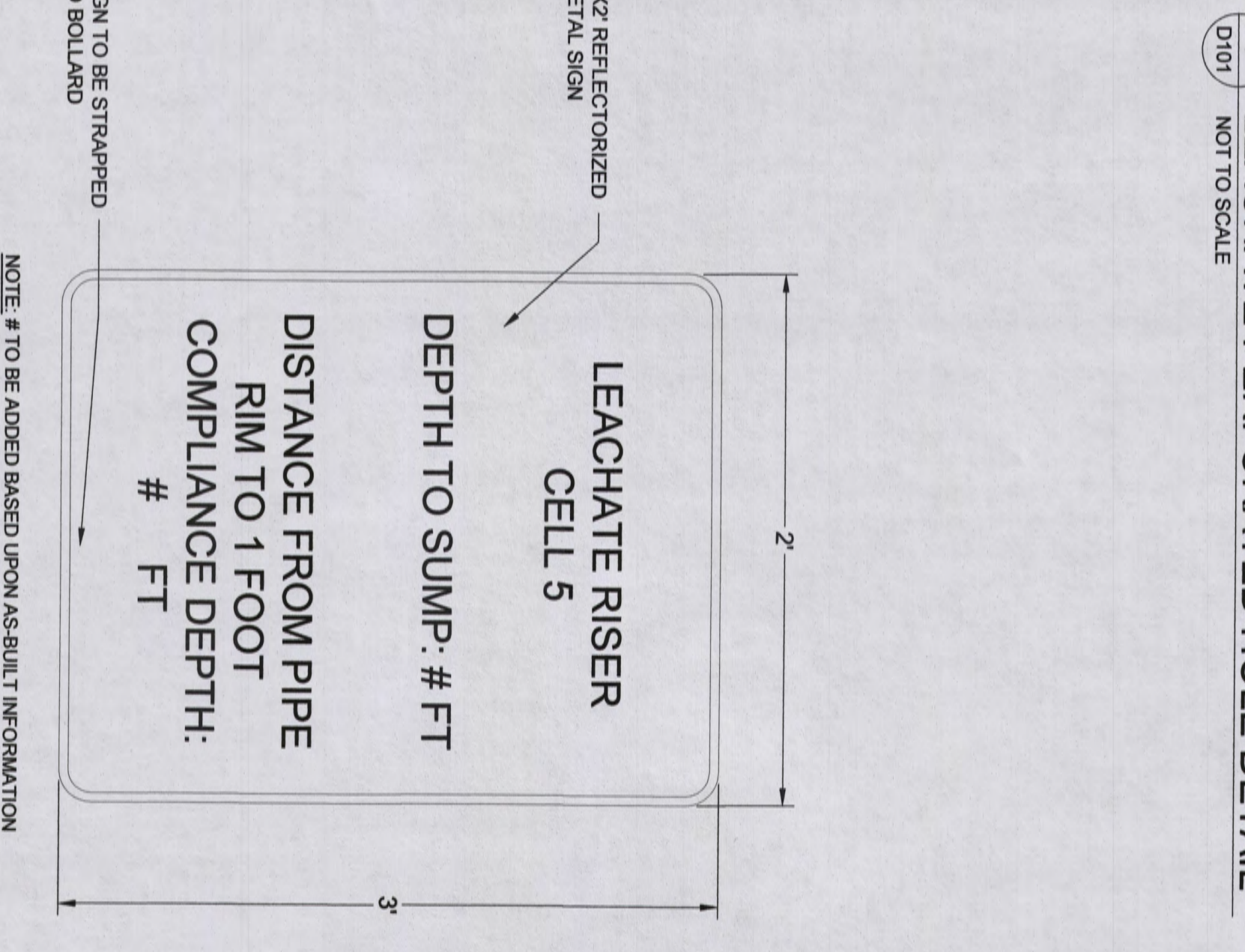
3 LEACHATE PERFORATED HOLE DETAIL
 D101 NOT TO SCALE



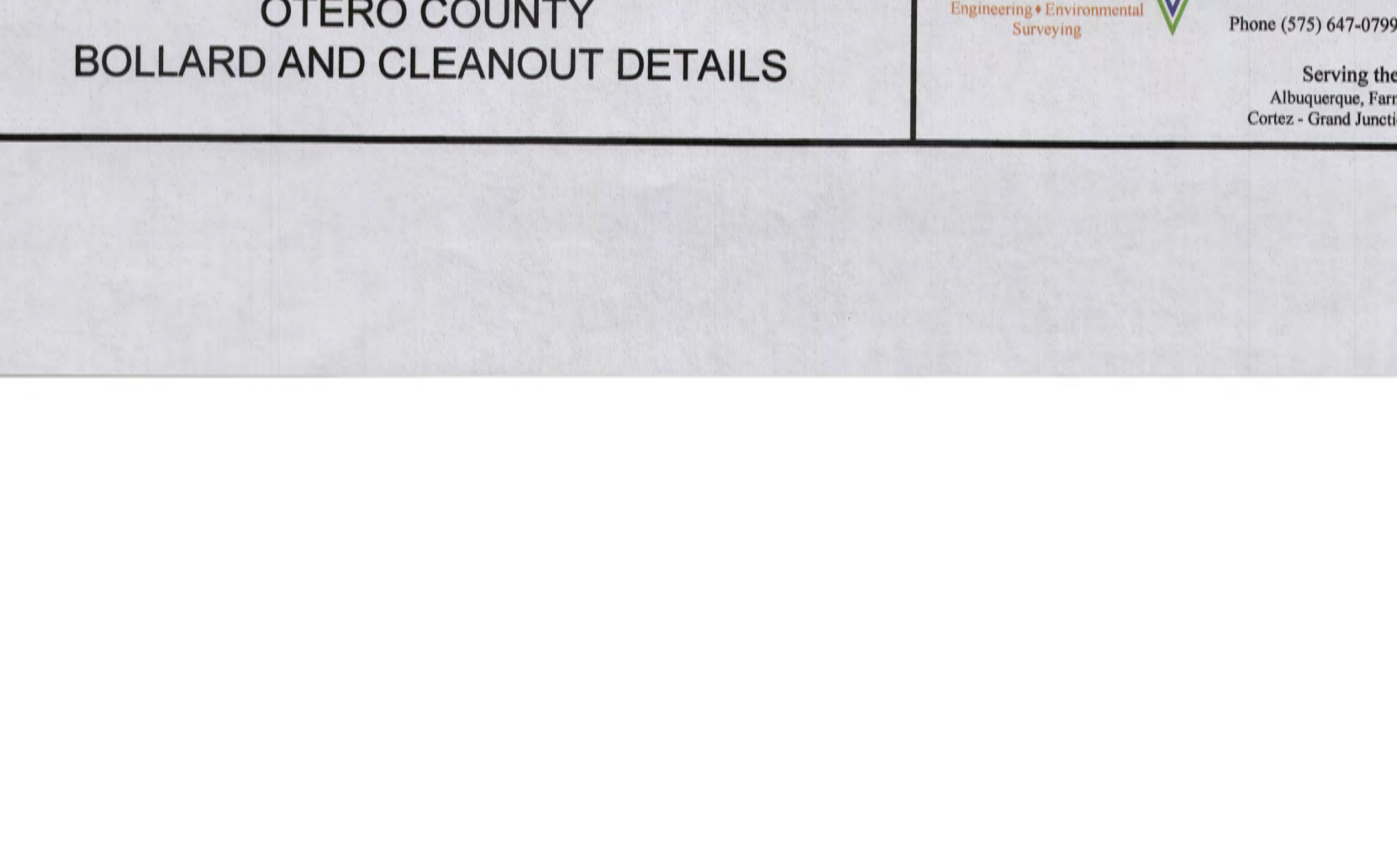
4 TYPICAL LEACHATE COLLECTION RISER PIPE SECTION
 D101 NOT TO SCALE



5 CROSS SECTION OF RISER V TRENCH
 D101 NOT TO SCALE



6 FINAL COVER TIE-IN DETAIL
 D101 NOT TO SCALE



7 LEACHATE SIGN
 D101 NOT TO SCALE

OTERO COUNTY ALAMOGORDO, NM

GREENTREE REGIONAL LANDFILL CELL #5
 OTERO COUNTY
 BOLLARD AND CLEANOUT DETAILS

SOUDER, MILLER & ASSOCIATES
 401 NORTH SEVENTEENTH STREET, SUITE 4
 LAS CRUCES, NM 88005-8131
 Phone (575) 647-0799 Toll-Free (800) 647-0799 Fax (505) 326-0045
 www.soudermiller.com
 Serving the Southwest & Rocky Mountains
 Albuquerque, Farmington, Las Cruces, Roswell, Santa Fe, NM
 Cortez - Grand Junction, CO - Sarford, AZ - Moab, UT, El Paso, TX

Rev #	Date	Description	By	Chk'd

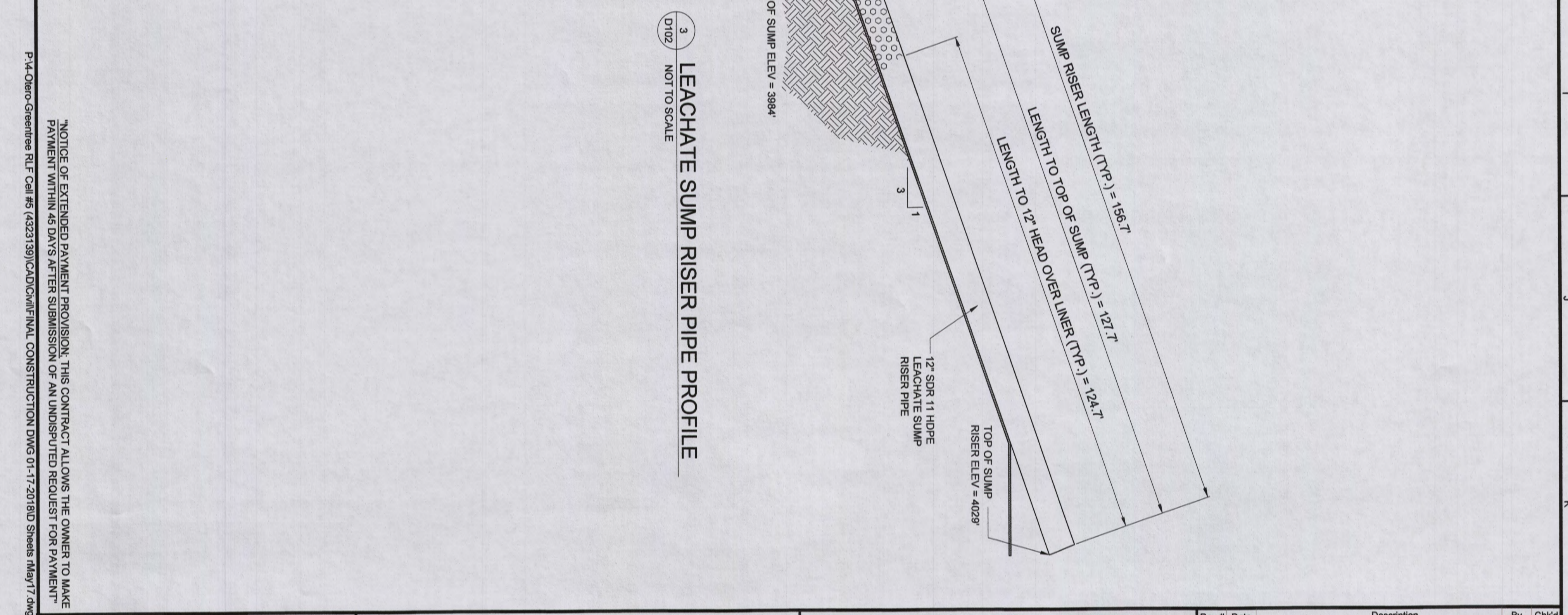
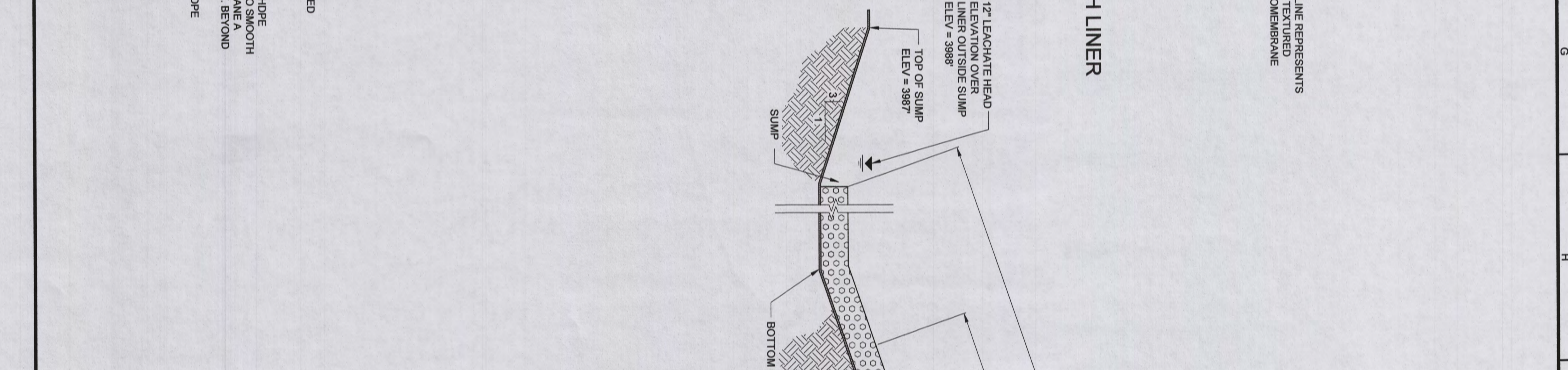
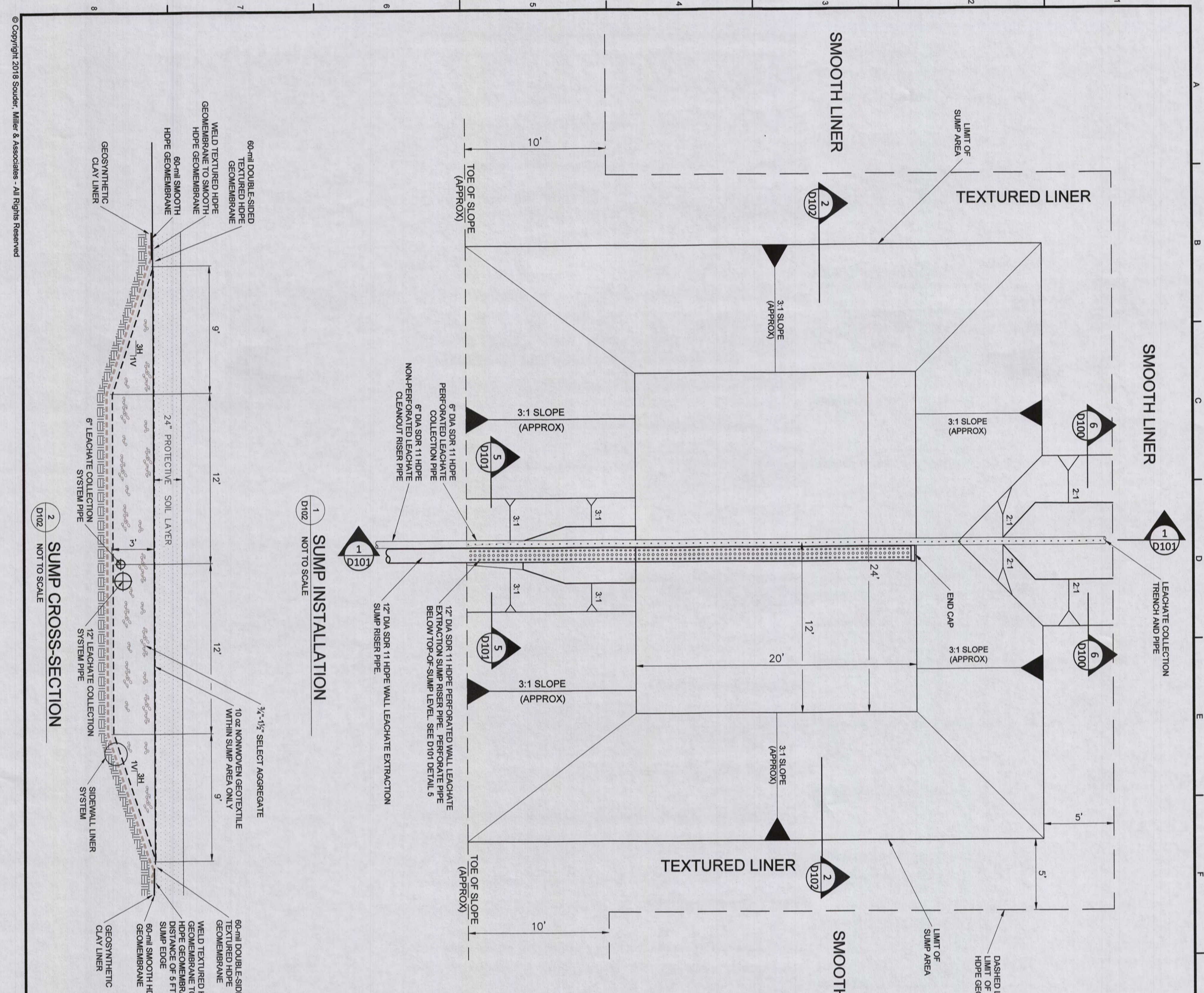
Scale: Horiz: N/A Vert: N/A
 Date: JAN 2018
 Project No: 4323139
 Sheet: **D101**

THIS DRAWING IS INCOMPLETE AND NOT TO BE USED FOR CONSTRUCTION. ANY CHANGES MUST BE APPROVED BY THE DESIGNER. DRAWN: KRM CHECKED: KRM DATE: JAN 2018

KARLE TONKANDER
 PROFESSIONAL ENGINEER
 18742
 NEW MEXICO
 18742

Copyright 2018 Souder, Miller & Associates - All Rights Reserved

P:\4-Client-Greentree RLF Cell #5 (4323139)\CAD\Civil\FINAL CONSTRUCTION DWG 01-17-2018\B0 Sheets (May17.dwg) 1/17/2018 7:50:14 AM Inv



Rev #	Date	Description	By	Chkd

OTERO COUNTY ALAMOGORDO, NM

GREENTREE REGIONAL LANDFILL CELL #5
OTERO COUNTY
COLLECTION SUMP DETAILS

SOUDE, MILLER & ASSOCIATES
401 NORTH SEVENTEENTH STREET, SUITE 4
LAS CRUCES, NM 88005-8131
Phone (575) 647-0799 Toll-Free (800) 647-0799 Fax (505) 326-0045
www.soudemiller.com
Serving the Southwest & Rocky Mountains
Albuquerque, Farmington, Las Cruces, Roswell, Santa Fe, NM
Cortez - Grand Junction, CO - Safford, AZ - Moab, UT, El Paso, TX

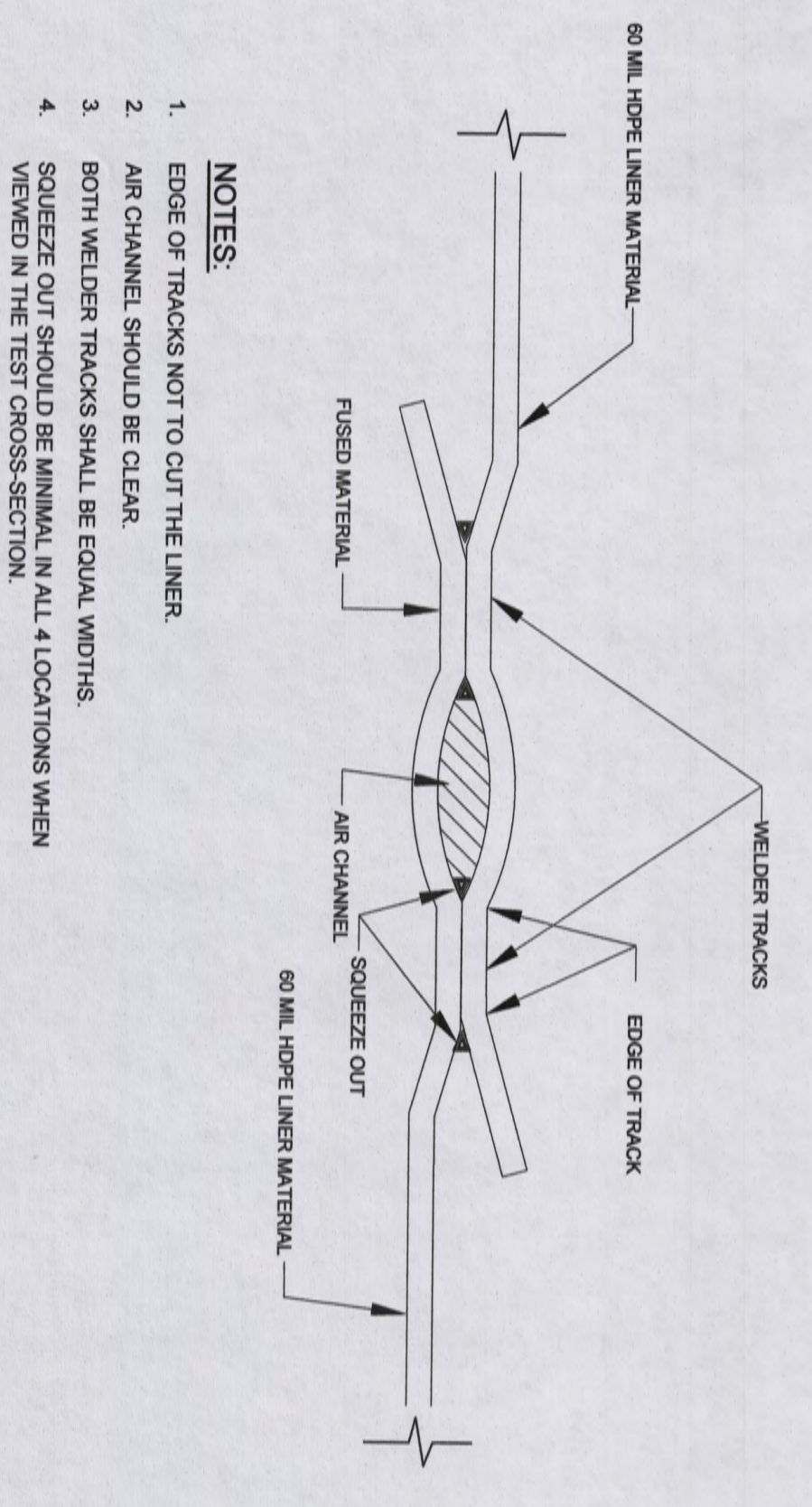
KARLE TOLKANDER
18742
PROFESSIONAL ENGINEER
1/23/2018

THIS DRAWING IS INCOMPLETE AND NOT TO BE USED FOR STRADDLED, SHORED AND DATED
Designed KRM
Drawn KRM
Checked KRM

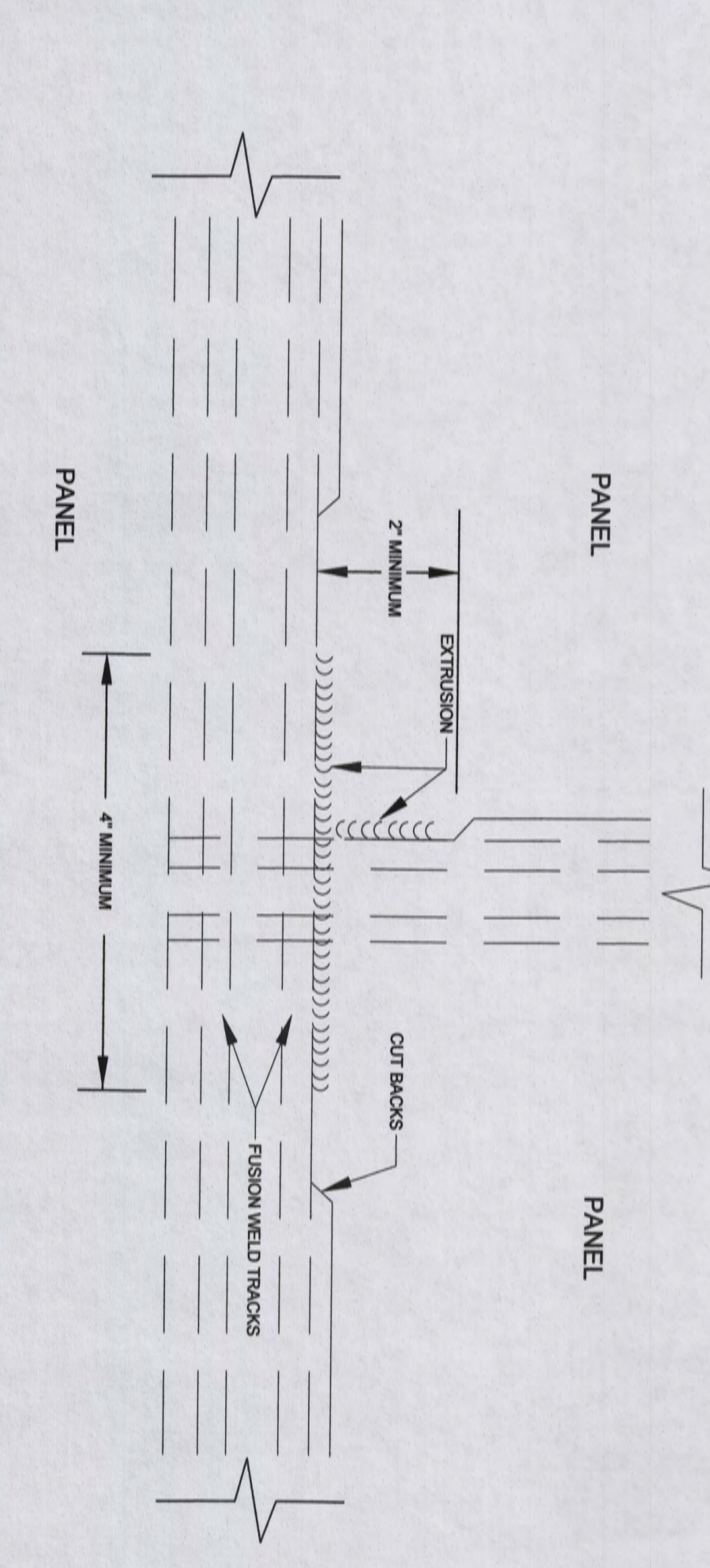
Date: JAN 2018
Scale: Horiz: N/A
Vert: N/A
Project No: 4323139
Sheet: D102

NOTICE OF EXTENDED PAYMENT PROVISION: THIS CONTRACT ALLOWS THE OWNER TO MAKE PAYMENT WITHIN 45 DAYS AFTER SUBMISSION OF AN UNDISPUTED REQUEST FOR PAYMENT.

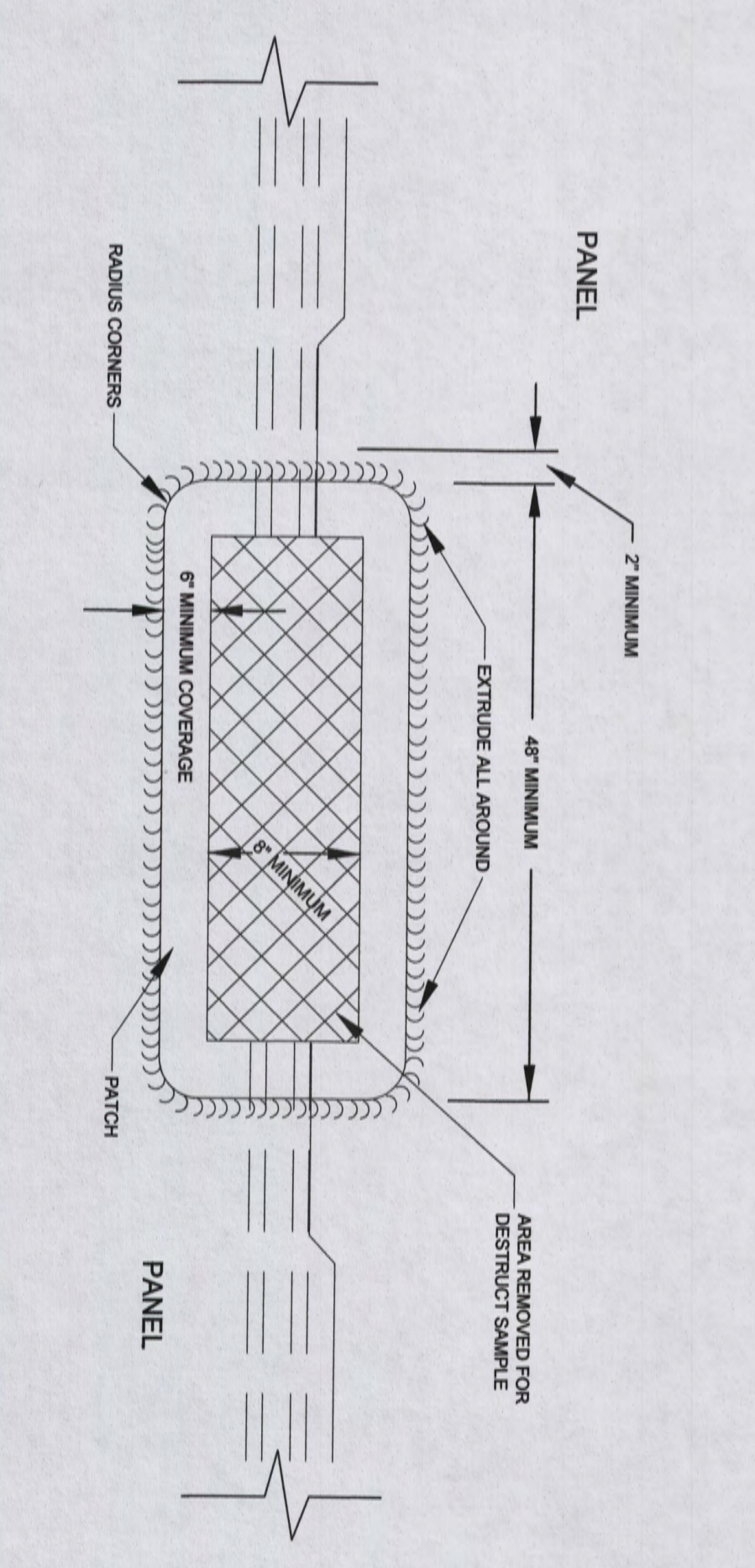
P-14-Civico-Greentree RLF Cell #5 (4323139) CAD/CIVIL/FINAL CONSTRUCTION DWG 01-17-2018/D Sheets May/17.dwg 1/17/2018 7:49:47 AM Two



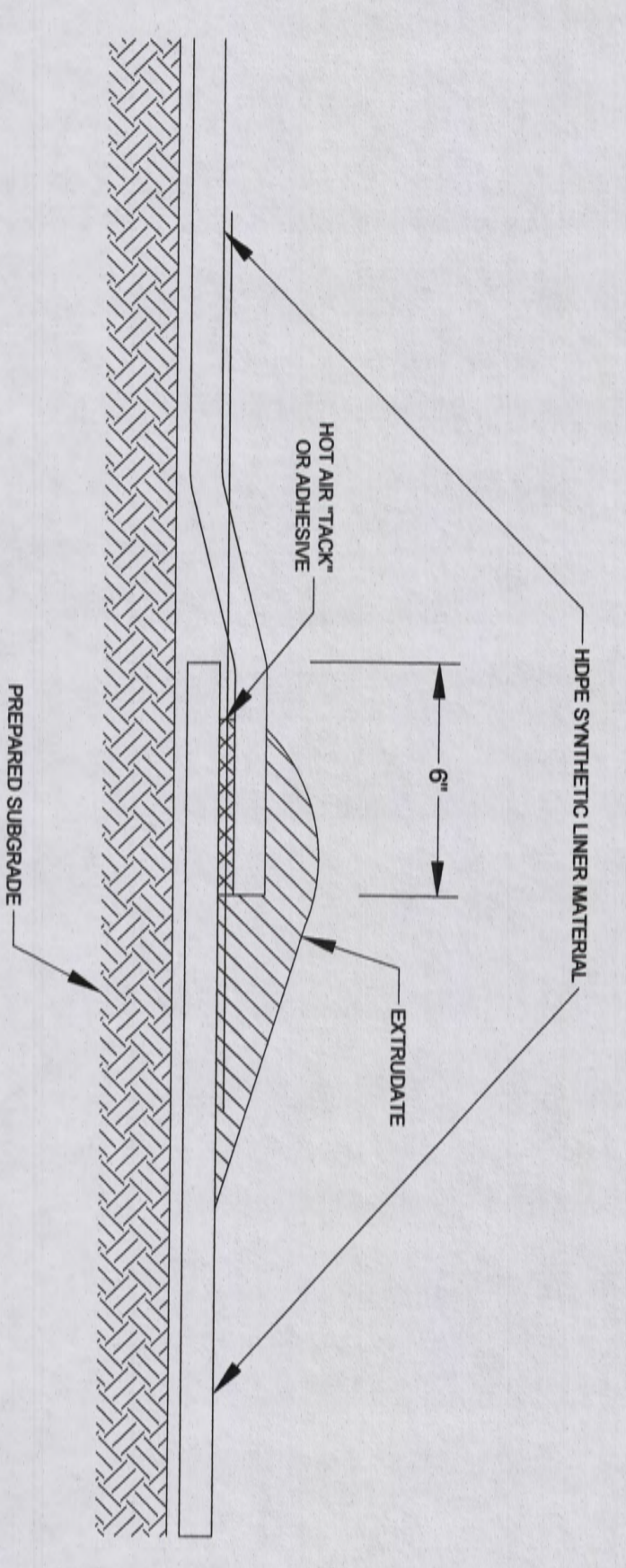
1 TYPICAL FUSION WELD
SECTION VIEW
D103 NOT TO SCALE



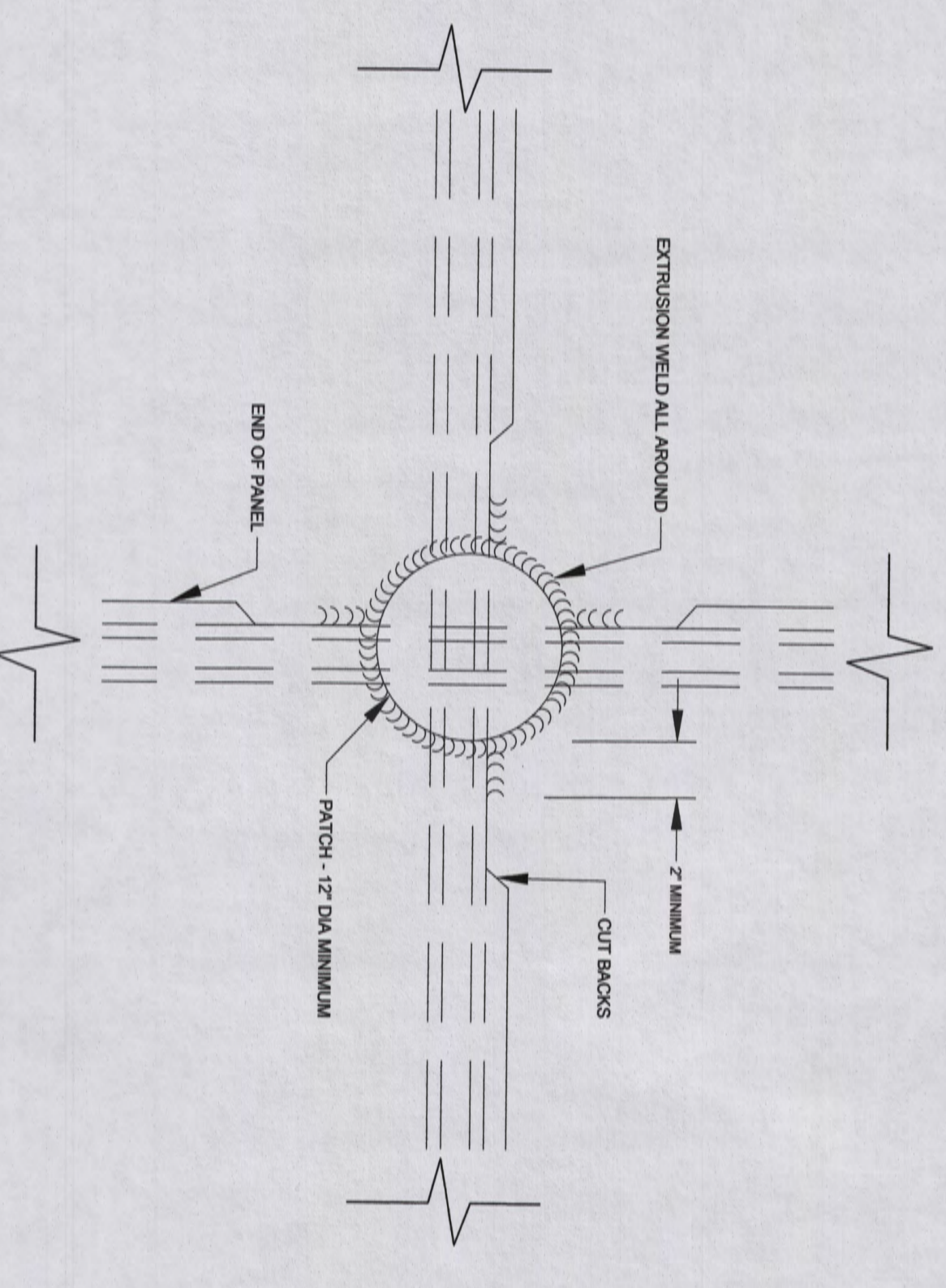
2 TYPICAL "T" AT BUTT SEAM
PLAN VIEW
D103 NOT TO SCALE



3 TYPICAL DESTRUCT SAMPLE PATCH
PLAN VIEW
D103 NOT TO SCALE



4 TYPICAL EXTRUSION WELD
SECTION VIEW
D103 NOT TO SCALE



5 TYPICAL PATCH AT PANEL END
PLAN VIEW
D103 NOT TO SCALE

- FMIL LAYOUT NOTES:**
1. LINER PANEL EXTENDING OVER LEACHATE COLLECTOR TRENCH DECREASES ABOUT 1 FT. IN WIDTH DUE TO THE TRENCH SIDE SLOPE CONFIGURATION.
 2. LINER PANEL DOUBLE FUSION WELD SEAMS SHALL NOT BE LOCATED CLOSER THAN 5.0 FT. TO ANY LEACHATE LATERAL IN A PARALLEL DIRECTION.
 3. A MAXIMUM 6\"/>

NOTE:
CONTRACTOR TO JOINWELD LINER PER MANUFACTURER RECOMMENDATION. DRAWINGS AS SHOWN ARE FOR INFORMATION PURPOSES ONLY.

Rev #	Date	Description	By	Chk'd

SOUDER, MILLER & ASSOCIATES
 401 NORTH SEVENTEENTH STREET, SUITE 4
 LAS CRUCES, NM 88005-8131
 Phone (575) 647-0799 Toll-Free (800) 647-0799 Fax (505) 326-0045
 www.soudermiller.com
 Serving the Southwest & Rocky Mountains
 Albuquerque, Farmington, Las Cruces, Roswell, Santa Fe, NM
 Cortez - Grand Junction, CO - Safford, AZ - Moab, UT, El Paso, TX

OTERO COUNTY ALAMOGORDO, NM
GREENTREE REGIONAL LANDFILL CELL #5
OTERO COUNTY
LINER CONNECTION & CONNECTION DETAILS

THIS DRAWING IS IN ACCORDANCE WITH THE REQUIREMENTS OF THE OTERO COUNTY CONSTRUCTION UNLESS IT IS OTHERWISE SPECIFIED AND DATED.
 Designated Drawn Checked
 KRM KET
 Date: JAN 2018
 Scale: Horiz: N/A Vert: N/A
 Project No.: 4323139
 Sheet: D103