

609 Cherry Street, Macon, GA 31201
478.742.1208 / www.bbinc.com
© COPYRIGHT 2020 BTBB Inc.
NOT FOR REPRODUCTION

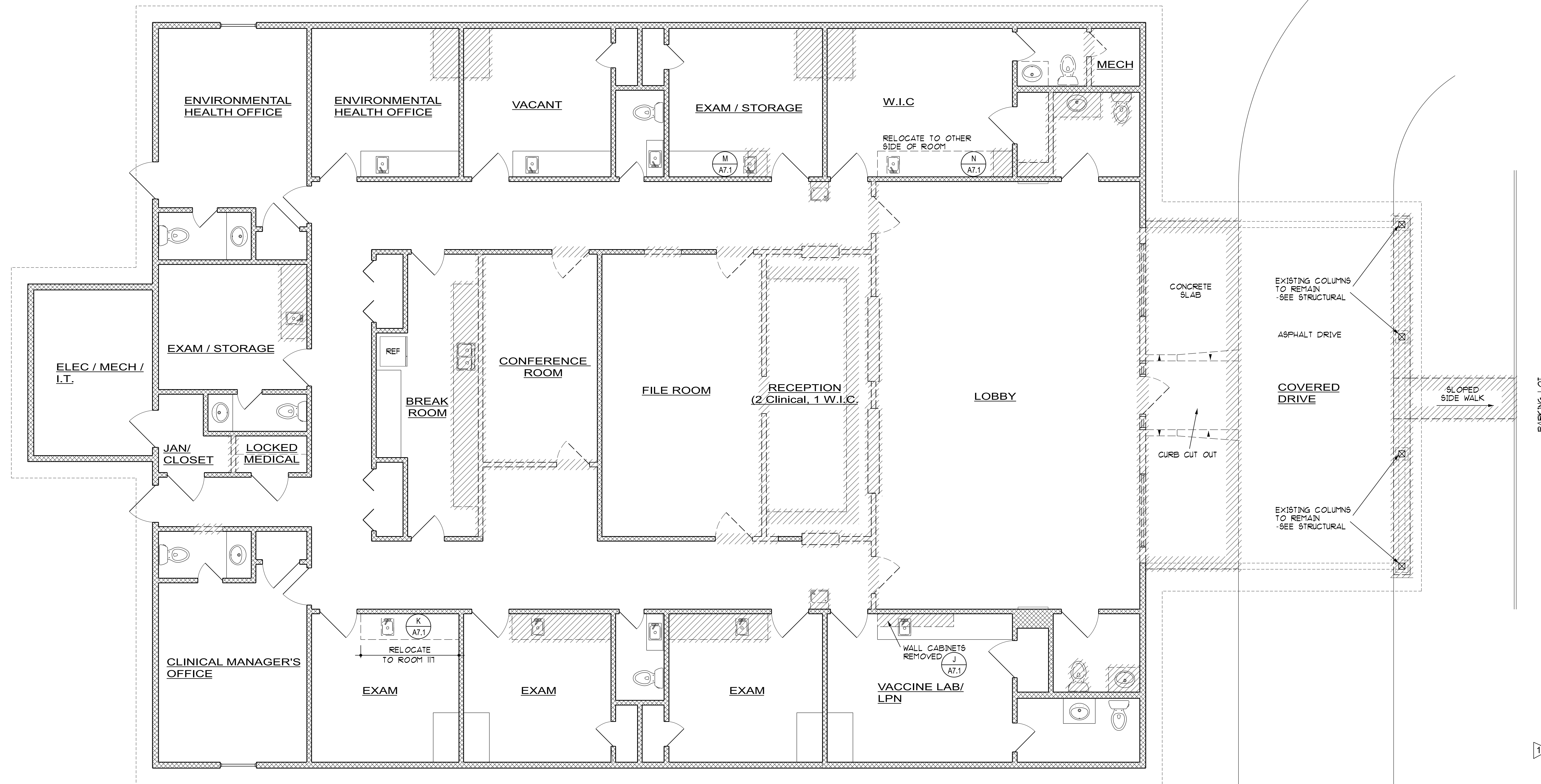


The delivery of this drawing should not be construed to provide any express warranty or guarantee to anyone that all dimensions, details, etc are exact or to indicate that the use of this drawing implies any review and approval of the design professional for any future use. Any use of the information on this drawing is at the sole risk and liability of the user.

Renovations to:
Peach County Health Department
503 Bluebird Blvd. Fort Valley, Georgia 31030

Drawing Issue Schedule	
9/29/2020	Existing Conditions
7/12/2021	Permit Set
7/28/2021	R1 - Addendum #1
Project No: 2020-27	

Demolition Floor Plan
A1.0

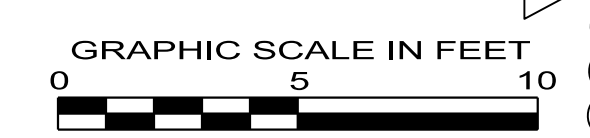


DEMOLITION FLOOR PLAN

1/4" = 1'-0"
MAIN BUILDING = 4,985 GROSS S.F.
COVERED DRIVE @ 0.5 = 295 S.F.
TOTAL = 5,280 GROSS S.F.

LEGEND

- REMOVED
- - - RELOCATE



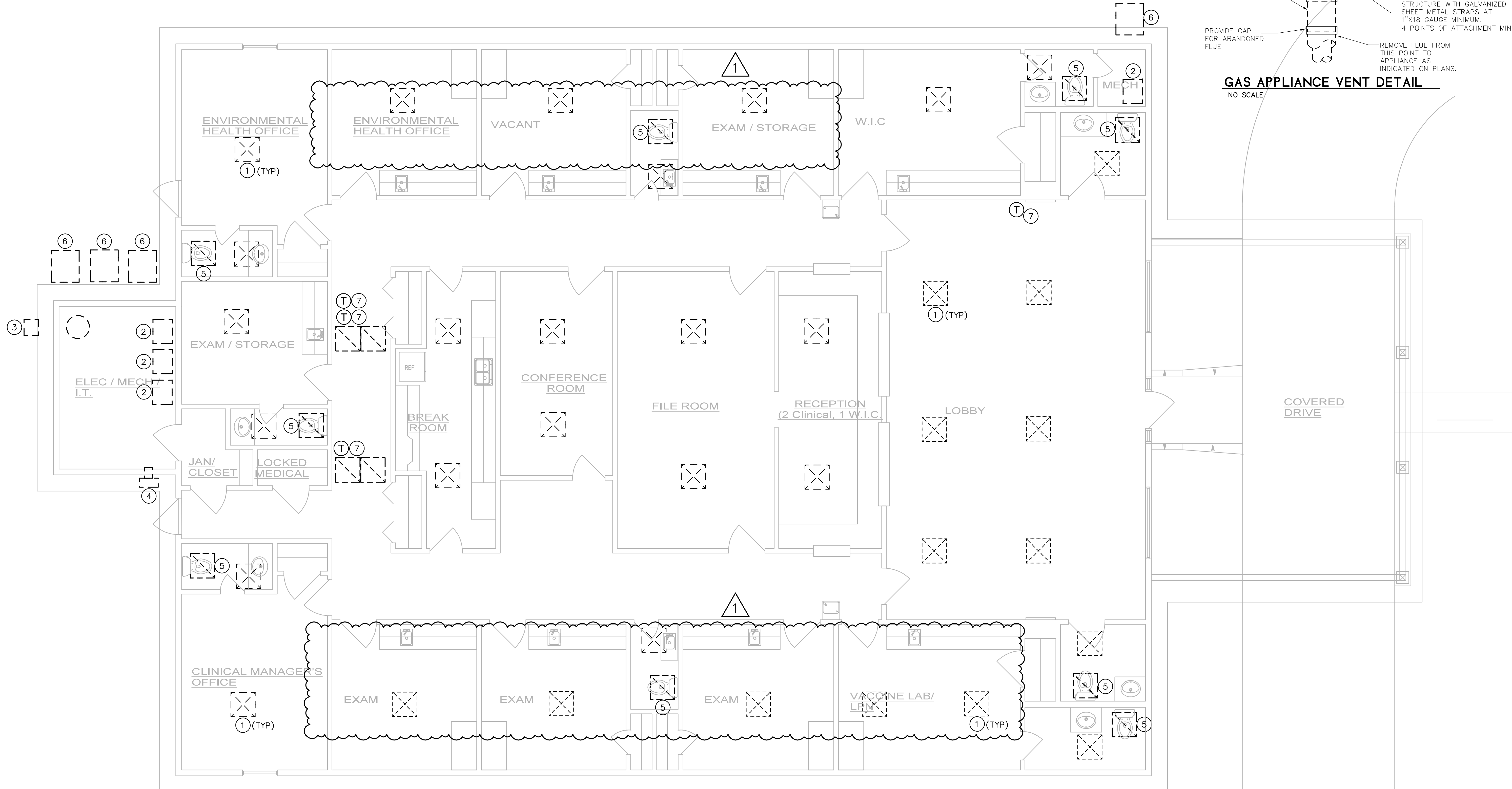
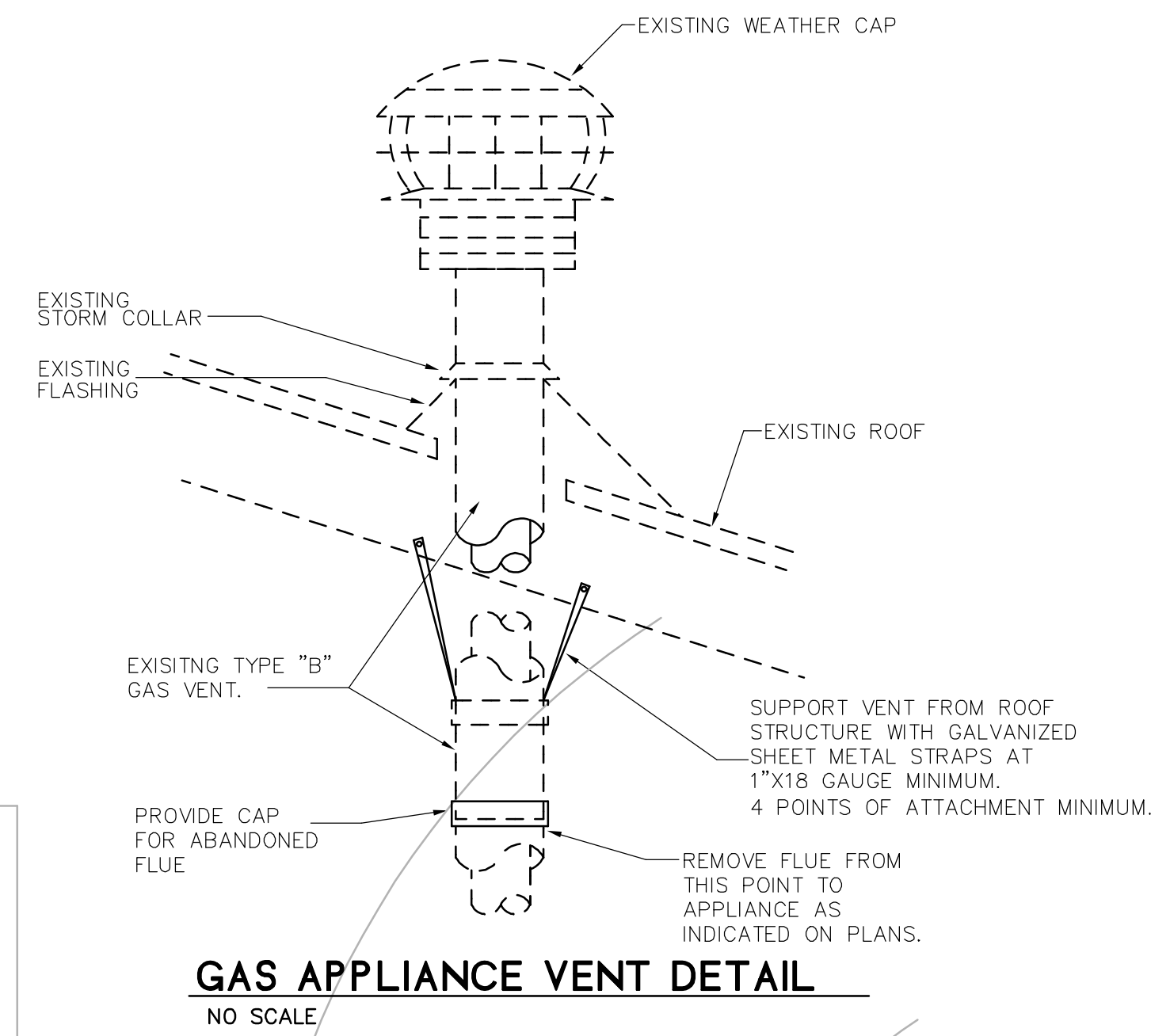
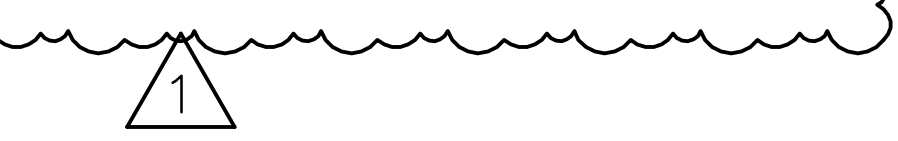
F:\PROJECTS\2020-27 Peach County Health Dept. For + Valley\Marketing Drawings\Revisions\Revision 1 - Addendum #1-28-20\2020-27 A1.0 Demolition Floor Plan.dgn 7/27/2021

GENERAL PLAN NOTES-DEMOLITION

- A. VARIOUS PIECES OF EQUIPMENT TO BE REMOVED SHALL REMAIN THE PROPERTY OF THE OWNER. COORDINATE WITH OWNER.
- B. COORDINATE WITH ARCHITECTURAL DOCUMENTS. FOR PHASING SCHEDULE TO ENSURE THAT CERTAIN EQUIPMENT AND OTHER ITEMS ARE NOT REMOVED OR ABANDONED PREMATURELY. PARTICULARLY WITH REFERENCE TO ENVELOPE BREACH.
- C. REPAIR ALL SURFACES DAMAGED DURING DEMOLITION TO MATCH ADJACENT CONSTRUCTION AND FINISHES.
- D. REMOVE ALL EXISTING MECHANICAL EQUIPMENT & ASSOCIATED DUCT WORK ENTIRELY, WITHIN SCOPED AREAS OF PROJECT, UNLESS NOTED OTHERWISE.
- E. COORDINATE WITH NEW WORK DRAWINGS FOR NEW EQUIPMENT LOCATIONS DUCTWORK AND VARIOUS ITEMS TO REMAIN. CONTRACTOR SHALL MAKE PROVISIONS FOR WEATHER PROOFING BUILDING WHERE ROOF & EXTERIOR WALL EQUIPMENT IS REMOVED. COORDINATE WITH NEW WORK DRAWINGS.
- F. FIELD VERIFY ALL EXISTING CONDITIONS.
- G. COORDINATE MECHANICAL ROOF EQUIPMENT/PENETRATIONS WITH ARCHITECT.

NUMBERED NOTES - DEMOLITION

- 1. REMOVE SUPPLY/RETURN GRILLE & ASSOCIATED DUCT ENTIRELY U.N.O.
- 2. REMOVE AIR HANDLING UNIT AND ASSOC. PIPING, CONTROLS, AND DUCTWORK ENTIRELY. UNLESS NOTED OTHERWISE, REMOVE FLUE TO ATTIC AND CAP OFF. PROVIDE SUPPORT TO ENSURE PROPER SUPPORT. TAKE CARE NOT TO DAMAGE FLUE THRU ROOF AND/OR ASSOCIATED FLASHING. OBJECTIVE IS TO MAINTAIN WATER PROOF INSTALLATION. COORDINATE WITH ARCHITECT. REFER TO DETAIL, THIS SHEET.
- 3. EXISTING GAS METER.
- 4. REMOVE EXISTING LOUVER AND FILL IN WALL. COORDINATE WITH ARCHITECTURAL.
- 5. REMOVE EXHAUST FAN AND ASSOC. DUCTWORK AND CONTROLS ENTIRELY.
- 6. REMOVE CONDENSER UNIT AND ASSOC. PIPING.
- 7. REMOVE EXISTING THERMOSTAT AND WIRING ENTIRELY.
- 8. NOT USED



FLOOR PLAN-HVAC-DEMOLITION

1/4" = 1'-0"

Peach County Health Department Improvements
 503 Bluebird Blvd. Fort Valley, Georgia 31030

Drawing Issue Schedule	
7/12/2021	PERMIT SET
7/28/2021	ADDENDUM 1

Project No: 2020-27

HVAC DEMOLITION PLAN
M0.1

B BUTLER ENGINEERING, INC.
 1506 WEST THIRD AVENUE
 ALBANY, GEORGIA 31707
 PHONE: 229.434.0236
 EMAIL: TODD@BUTLERENG.COM

7/27/2021 5:21 PM

HVAC KEY NOTES

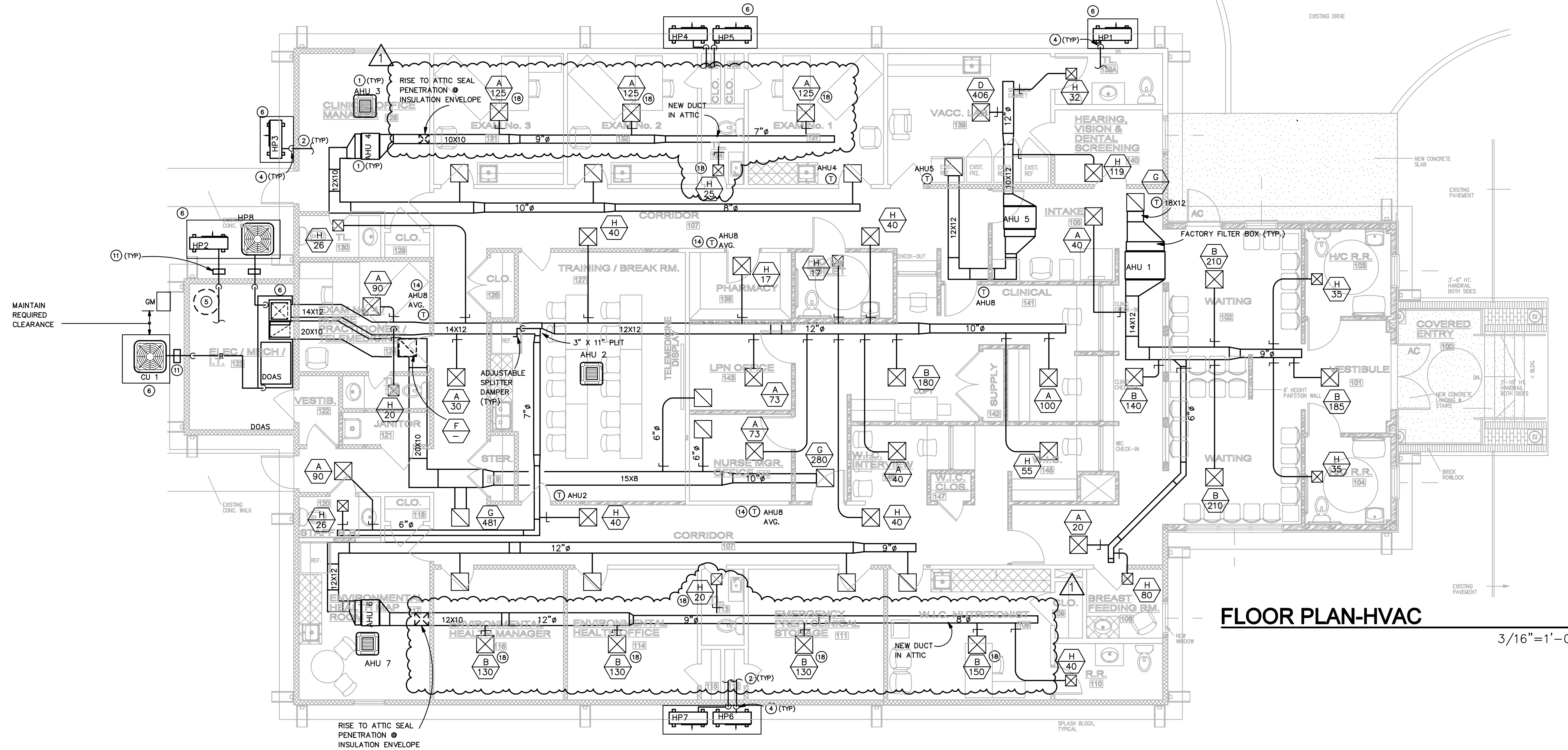
- RUN CONDENSATE DRAIN AS INDICATED. COORD. W/PLUMBING DWGS FOR HD AND FLOOR DRAIN LOCATIONS.
- REFRIGERANT LINES ABOVE CLG. EXTEND TO ASSOCIATED AHU AND CONNECT TO SAME PER AHU MANUFACTURER RECOMMENDATIONS. COMPLETE RUN NOT SHOWN FOR CLARITY.
- NOT USED.
- RISE REFRIGERANT LINES UP EXTERIOR WALL, AND INTO BLDG. AS HIGH AS POSSIBLE. PROVIDE ALUMINUM COVER CONTINUOUS AT VERTICAL RUN. SECURE COVER TO WALL WITH TAPCONS AT 12" ON CENTER. PROVIDE SLOPED CAP @ TOP OF COVER. COORD. W/ ARCHITECT FOR FINISH.
- WATER HEATER. COORDINATE WITH PLUMBING.
- 4-INCH THICK CONCRETE PAD 3000 PSI WITH FIBER MESH REINFORCEMENT.
- SIZE PLENUM TO SUIT AHU /LOUVER/FAN AND ASSOCIATED DUCT SIZE.
- DROP/CONNECT O.S.A. INTAKE DUCT MIXING BOX/R.ADUCT CONNECTION. PROVIDE TRANSITIONS AS REQUIRED TO MAKE CONNECTION TO SAME. PROVIDE MVD IN OSA DUCT.
- DUCT TO LOUVER/GRILLE. PROVIDE TRANSITIONS AS REQUIRED ACCOMMODATE CONNECTIONS TO SAME.
- DUCT IN ATTIC.
- UNISTRUT REFRIGERANT PIPE SUPPORT, TYPICAL.
- INSULATED CONDENSATE DRAIN ABOVE CEILING.
- RISE DUCT TO ATTIC.
- PROVIDE AVERAGING THERMOSTAT.
- RUN DUCT EXPOSED IN MECH. ROOM.

HVAC GENERAL PLAN NOTES:

- COORDINATE FINAL LOCATION OF THERMOSTAT WITH OWNER AND ARCHITECT. INSTALL THERMOSTAT SUCH THAT EQUIP. DOES NOT IMPOSE FALSE LOADS STAT. LOCATIONS INDICATED ARE APPROXIMATE. COORDINATE WITH OWNER. CONCEAL WIRING IN WALLS.
- PROVIDE MVD @ EACH DIRECTION DOWNSTREAM OF ALL SPLITS IN S.A. DUCTS.
- RUN DUCT AS HIGH AS POSSIBLE U.N.O.
- COORDINATE WITH ARCHITECTURAL DOCUMENTS FOR PHASING SCHEDULE TO ENSURE THAT CERTAIN EQUIPMENT AND OTHER ITEMS ARE NOT REMOVED, INSTALLED OR ABANDONED PREMATURELY.
- REPAIR ALL SURFACES DAMAGED DURING DEMOLITION TO MATCH ADJACENT CONSTRUCTION AND FINISHES.
- REMOVE ALL EXISTING MECHANICAL EQUIPMENT, CONTROLS, WIRING, ETC. WHETHER NOTED & INDICATED OR NOT, UNLESS NOTED OTHERWISE. COORDINATE WITH ARCHITECT AND OWNER FOR PHASING. ABANDONED PIPING SHALL BE CAPPED (ALL OPEN ENDS). ALSO, IF PORTIONS ARE REMOVED FOR NEW WORK ACCESS, CONTRACTOR SHALL ENSURE PIPE IS SUPPORTED WITHIN 12" OF PIPE END OF RUNS. INSTALL NEW HVAC SYSTEMS WITH CONTROLS AS INDICATED.
- CONTRACTOR SHALL MAKE PROVISIONS FOR WEATHER PROOFING BUILDING WHERE ROOF/WALL EQUIPMENT IS REMOVED. ALL SURFACES LEFT OPEN DUE TO DEMOLITION SHALL BE REPAIRED TO MATCH EXISTING SURFACES. COORDINATE WITH ARCHITECT.
- NEW EQUIPMENT INSTALLATION SHALL BE IN COMPLIANCE WITH MANUFACTURING REQUIREMENTS.
- EXISTING WORK INDICATED IS TAKEN FROM OLD DRAWINGS. CONTRACTOR SHALL FIELD VERIFY ACTUAL CONDITIONS AND REPORT DISCREPANCIES AND/OR CONCERNS TO ARCHITECT.
- GENERAL: DRAWINGS SHOW GENERAL ARRANGEMENT, LAYOUT AND LOCATION OF PIPING, DUCTWORK, APPURTENANCES, ETC. BUT DO NOT SHOW REQUIRED FITTINGS AND OFFSETS THAT MAY BE NECESSARY TO RUN PIPING AND DUCTWORK AND CONNECT TO EQUIPMENT, ETC. OFFSET PIPING AND DUCTWORK AROUND ALL OBSTRUCTIONS. FABRICATE AND INSTALL ALL NEW WORK BASED ON FIELD MEASUREMENTS. PROVIDE ALL NECESSARY FITTINGS AND OFFSETS AT NO ADDITIONAL COST TO THE OWNER. DUCT & PIPE ROUTING SHOWN ON DRAWINGS SHALL BE ALTERED BY CONTRACTOR WHERE REQUIRED TO AVOID INTERFERENCE AND CLEARANCE DIFFICULTIES. CAREFULLY COORDINATE PIPE & DUCT ROUTING WITH ELECTRICAL TO AVOID CONFLICTS WITH ELECTRICAL CONDUIT CABLE TRAY, ETC. SEE ELECTRICAL PLANS FOR LOCATION. COORDINATE PIPE AND DUCT ROUTING WITH PLUMBING PIPING (E.G. SPRINKLER, VENT PIPING, STORM DRAIN, DOMESTIC WATER, ETC) TO AVOID CONFLICTS. SEE PLUMBING DRAWINGS FOR LOCATIONS.
- WHERE DUCTWORK EXIST TO REMAIN, REPLACE ALL EXISTING GRILLES WITH NEW GRILLES. CONNECT TO EXISTING DUCTWORK. SIZE GRILLES TO MATCH EXISTING, UNLESS NOTED OTHERWISE (UNO).

- NEW FLUE AND COMBUSTION AIR VENT THRU ROOF. COMPLETE INSTALLATION PER WH MANUF. REQUIREMENTS & ALL APPLICABLE CODES. COORDINATE WITH MANUF. FOR WATER HEATER ACCESSORIES TO BE FURNISHED TO ENSURE COMPLETE AND PROPER OPERATING SYSTEM
- DROP COND. PIPING EXPOSED IN CORNER OFFSET AND TERMINATE IN MOP SINK
- NOT USED
- NOT USED
- DUCT MOUNTED SMOKE DETECTOR
- RISE 6" EXHAUST DUCT TO BROAN OR EQUIVALENT MODEL 634M ROOF CAP. FACTORY BLACK FINISH. SEAL ALL JOINTS INCLUDING CONNECTION TO ROOF CAP.

CFM RANGE	DUCT CONNECTION SIZE (INCHES)		
	SUPPLY AIR	RETURN AIR	EXHAUST AIR
25-65	5"φ	6"φ	6"φ
66-100	6"φ	8"φ	8"φ
101-150	7"φ	9"φ	9"φ
151-225	8"φ	10"φ	10"φ
226-300	9"φ	10"φ	10"φ
301-400	10"φ	12"φ	12"φ
401-600	12"φ	14"φ	14"φ



FLOOR PLAN-HVAC 3/16"=1'-0"

NOTE: REFER TO SHEET M1.2 FOR EXHAUST & VENTILATION PLAN, AND CONDENSATE PIPING.



609 Cherry Street, Macon, GA 31201
478.742.1208 / www.btbbinc.com
© COPYRIGHT 2020 BTBB Inc.
NOT FOR REPRODUCTION



7/14/21
The delivery of this drawing should not be construed to provide any express warranty or guarantee to anyone that all dimensions, details, etc. are exact or to indicate that the use of this drawing implies any review and approval of the design professional for any future use. Any use of the information on this drawing is at the sole risk and liability of the user.

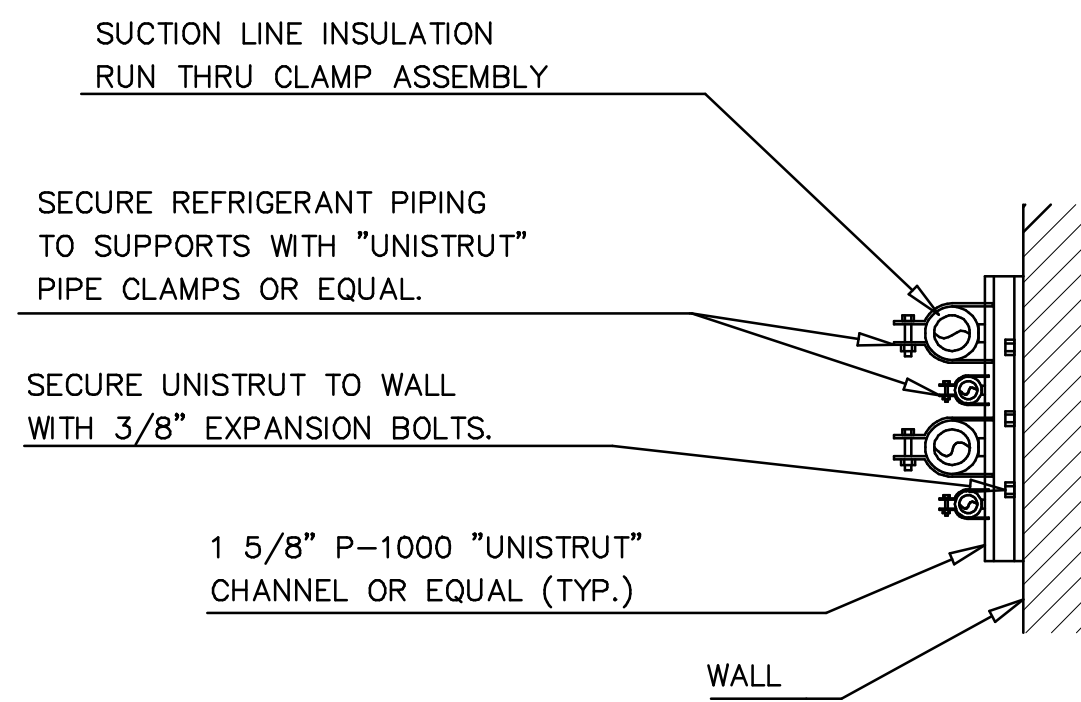
**Peach County Health Department
Improvements**
503 Bluebird Blvd. Fort Valley, Georgia 31030

Drawing Issue Schedule	
7/12/2021	PERMIT SET
7/28/2021	ADDENDUM 1
Project No:	2020-27

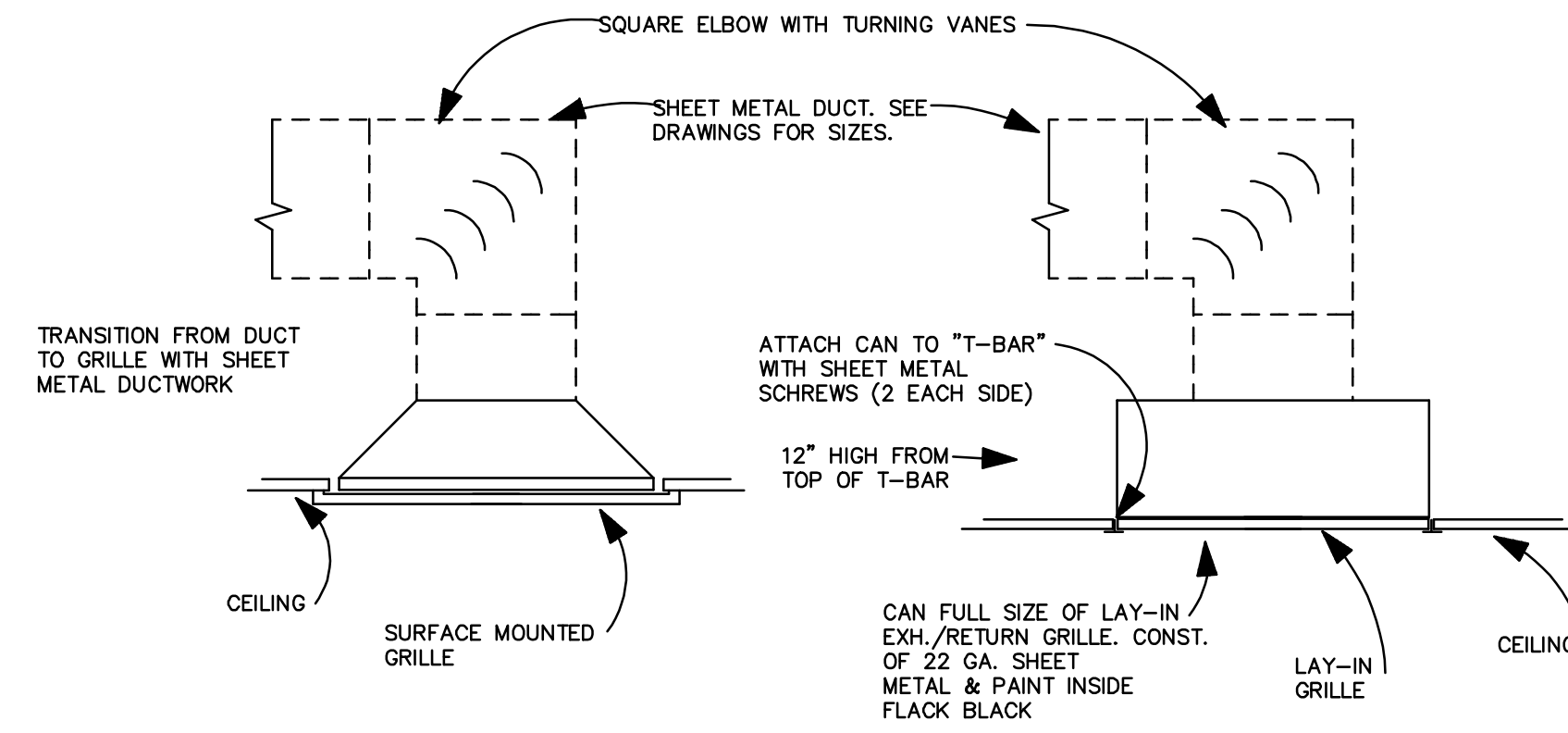
FLOOR PLAN-HVAC
M1.1

**B BUTLER
ENGINEERING, INC.**
1506 WEST THIRD AVENUE
ALBANY, GEORGIA 31707
PHONE: 229-434-0236
EMAIL: TODD@BUTLERENG.COM

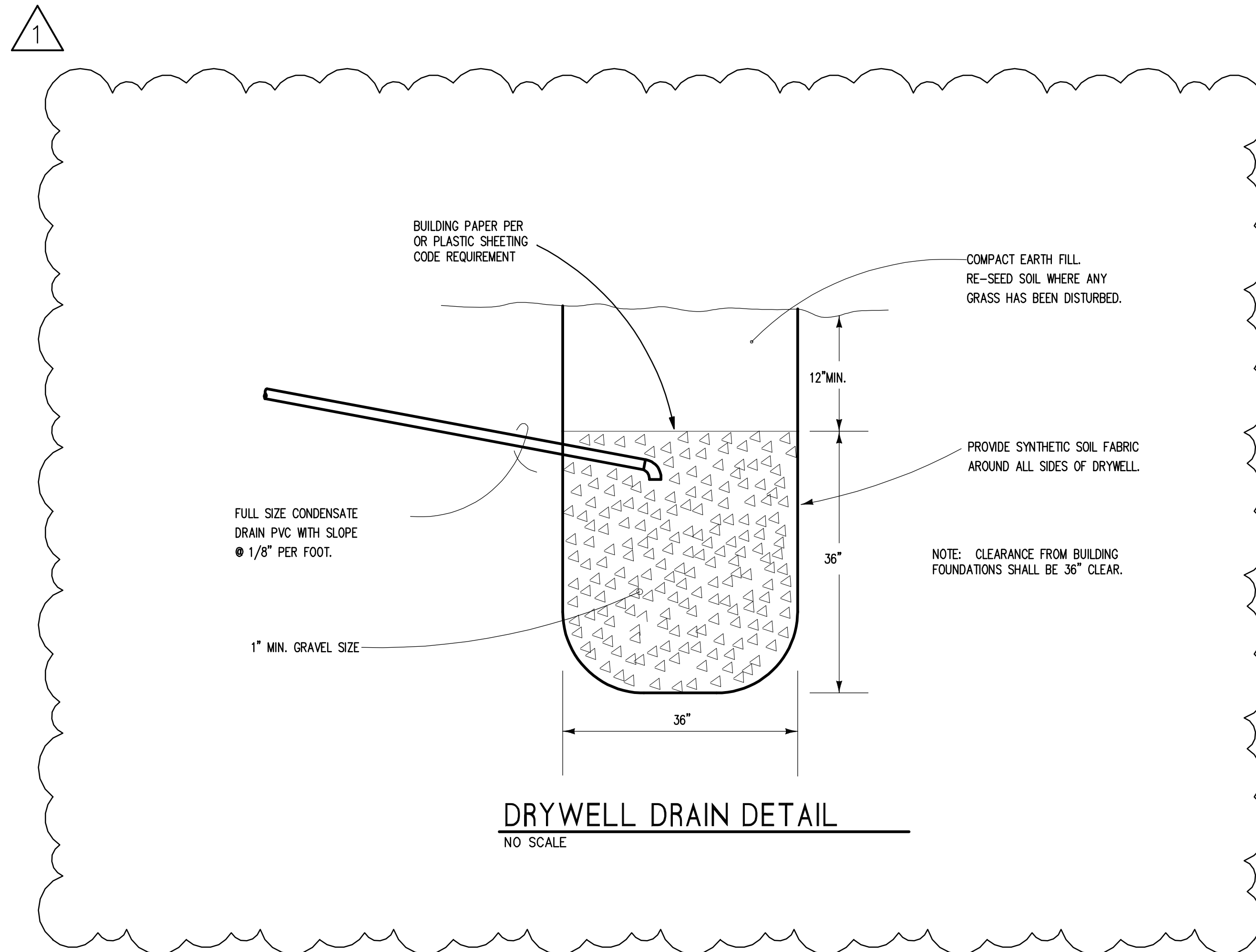
7/27/2021 5:22 PM



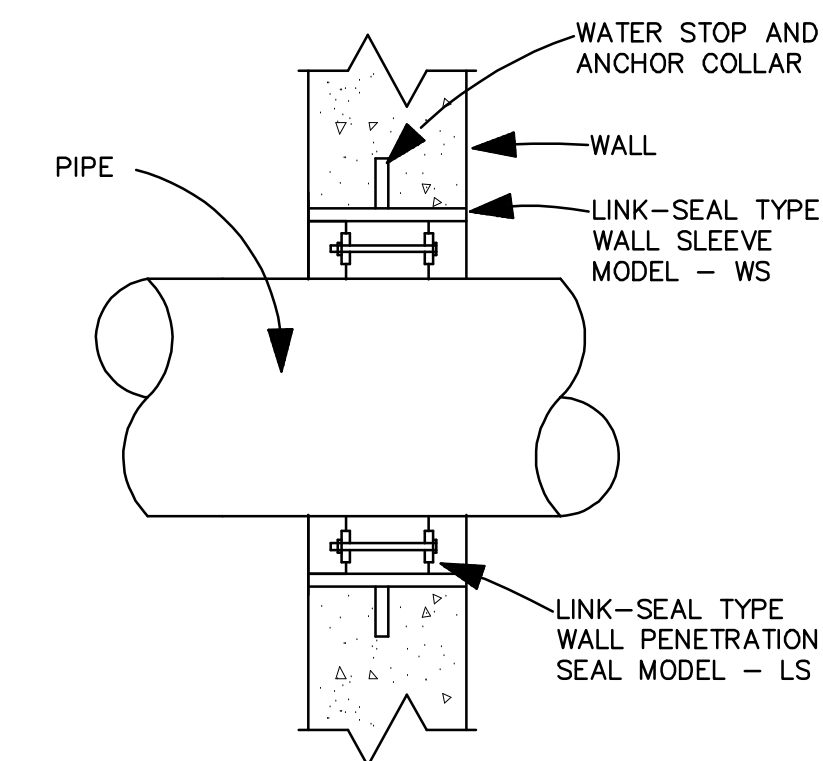
EXTERIOR PIPING WALL SUPPORT DETAIL
NOT TO SCALE



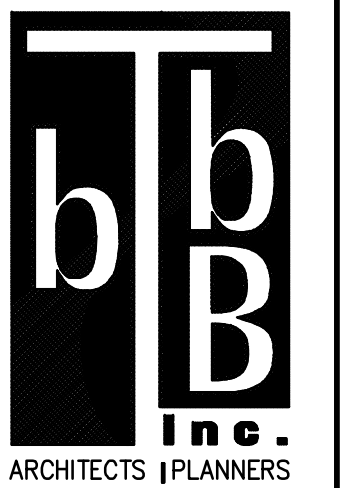
EXHAUST/RETURN GRILLE CONNECTION DETAILS
NOT TO SCALE



DRYWELL DRAIN DETAIL
NO SCALE



PIPE THRU EXTERIOR WALL DETAIL
NOT TO SCALE



609 Cherry Street, Macon, GA 31201
478.742.1208 / www.btbinc.com
© COPYRIGHT 2020 BTBB Inc.
NOT FOR REPRODUCTION



7/14/21

The delivery of this drawing should not be construed to provide any express warranty or guarantee to anyone that all dimensions, details, etc are exact or to indicate that the use of this drawing implies any review and approval of the design professional for any future use. Any use of the information on this drawing is at the sole risk and liability of the user.

**Peach County Health Department
Improvements**
503 Bluebird Blvd. Fort Valley, Georgia 31030

Drawing Issue Schedule	
7/12/2021	PERMIT SET
7/28/2021	ADDENDUM 1

Project No: 2020-27

**B BUTLER
ENGINEERING, INC.**
1506 WEST THIRD AVENUE
ALBANY, GEORGIA 31707
PHONE: 229.434.0236
EMAIL: TODD@BUTLERENG.COM

HVAC DETAILS

M2.3

WALL CAP SCHEDULE												
MARK	SIZE			GREENCHECK MODEL NO.	DUTY			PERFORMANCE		FINISH	ACCESSORIES	NOTES
	NECK IN.	FACE IN.	FLOOR TO TOP FLOOR TO TOP		INTAKE	RELIEF	EXHAUST	C.F.M.	MAX. PRESS. DROP IN. W.G.			
WC-1	6"	8X8	9'-0"	WC6	*		75	0.11	*		1x2x3+4	EF1
WC-2	6"	8X8	10'-0"	WC6	*		75	0.11	*		1x2x3+4	EF2
WC-3	6"	8X8	10'-0"	WC6	*		75	0.11	*		1x2x3+4	EF3
WC-4	6"	8X8	10'-0"	WC6	*		75	0.11	*		1x2x3+4	EF4
WC-5	6"	8X8	10'-0"	WC6	*		75	0.11	*		1x2x3+4	EF6
WC-6	6"	8X8	10'-0"	WC6	*		75	0.11	*		1x2x3+4	EF5
WC-7	6"	8X8	10'-0"	WC6	*		75	0.11	*		1x2x3+4	EF8
WC-8	6"	8X8	10'-0"	WC6	*		75	0.11	*		1x2x3+4	EF10

1. INDICATED MOUNTING HEIGHTS ARE APPROX. AND SHALL BE COORDINATED WITH ARCHITECT BEFORE INSTALLING WALL CAPS.
 2. FLOOR TO TOP INDICATED IS ABOVE FINISHED FLOOR. ADJUST HEIGHT AS REQUIRED TO ENSURE MODULAR COURSE INSTALLATION WITH BRICK WORK, WHERE APPLICABLE.
 3. SEAL AND CAULK PERIMETER WATER TIGHT.
 4. SECURE WALL CAP TO WALL ON MAXIMUM 2'-0" CENTER ON FOUR SIDES. PROVIDE 22 GAUGE GALVANIZED STEEL SLEEVE THRU WALL.
 5. WALL CAPS FOR OSA INTAKE SHALL BE PROVIDED WITH BIRD SCREEN ONLY, NO BD DAMPER.
 6. MOUNTING HEIGHT TO BE FIELD DETERMINED.

AIR DEVICE SCHEDULE																							
O MARK	SIZE			TYPE	MFR	MODEL NO.	MATERIAL				FINISH	ACCESSORIES	SERVICE	MTG. HT.			THROW			MAX. LOSS IN. W.G.	CFM RANGE	REMARKS	
	FACE IN.	NECK IN.	GRILLE				STEEL	ALUMINUM (AL)	AL WITH STL. FRAME	AL WITH STL. FRAME				PRIMER	GR BY ARCH	OPR BLADE DAMPER	PAR BLADE DAMPER	PLENUM	FIRE DAMPER				SMOKE DAMPER
A	24X24	6"	*	GRILLE		TMS															21	0.1	0-135
B	24X24	8"	*	GRILLE		TMS															21	0.1	136-245
C	24X24	10"	*	GRILLE		TMS															21	0.1	246-327
D	24X24	12"	*	GRILLE		TMS															21	0.1	328-470
E	24X24	14"	*	GRILLE		TMS															21	0.1	471-534
F	12X12	12X12	*	GRILLE		50F															21	0.1	0-300 1"x1"x1" GRID
G	24X24	24X24	*	GRILLE		50F															21	0.1	301-2000 1"x1"x1" GRID
H	10X6	10X6	*	GRILLE		250															21	0.1	25-150

NOTES:
 1. GRILLES LOCATED IN OR ON FIRE RATED CEILINGS SHALL BE OF STEEL CONSTRUCTION.
 2. COORDINATE GRILLE HEIGHTS AND FINISH LOCATIONS WITH ARCHITECT BEFORE INSTALLING SAME.
 3. REFER TO PLAN FOR ASSOCIATED CFM.
 4. PROVIDE MOUNTING FRAME FOR LAY-IN INSTALLATION AT LAY-IN CEILINGS AND SURFACE MOUNTING FRAME FOR SURFACE MOUNTING INSTALLATION AT GYPSUM BOARD CEILINGS. COORDINATE WITH ARCHITECTURAL DOCUMENTS.
 5. PROVIDE NECK SIZE ADAPTORS WHERE REQUIRED.
 6. INSULATE THE BACK SIDE OF ALL SUPPLY GRILLES AND DIFFUSERS, FACTORY SEALED.
 7. PROVIDE OPPOSED BLADE DAMPER IN GRILLE NECK.
 8. REFER TO BRANCH DUCT CONNECTION SCHEDULE FOR BRANCH RUNOUT SIZES.
 9. WALL MOUNTED BAR GRILLES SHALL BE PROVIDED WITH BARS PARALLEL TO FLOOR.

LOUVER/BRICK VENT SCHEDULE												
MARK	SIZE			RUSKIN MODEL NO.	DUTY			PERFORMANCE		FINISH	ACCESSORIES	NOTES
	NECK IN.	FACE IN.	DEPTH IN.		INTAKE	RELIEF	EXHAUST	C.F.M.	MAX. PRESS. DROP IN. W.G.			
L-1	24X18	24X18	6"	ELF6375DX	*		850	0.11	*		1*2*3*4	

1. MOUNTING HEIGHTS ARE APPROX. AND SHALL BE COORDINATED WITH ARCHITECT BEFORE INSTALLATION.
 2. ADJUST HEIGHT AS REQUIRED TO ENSURE MODULAR COURSE INSTALLATION WITH BRICK WORK, WHERE APPLICABLE.
 3. SEAL AND CAULK PERIMETER WATER TIGHT.
 4. SECURE LOUVER TO WALL ON MAXIMUM 2'-0" CENTER ON FOUR SIDES. PROVIDE 22 GAUGE GALVANIZED STEEL SLEEVE THRU WALL.

HEAT PUMP SCHEDULE																	
UNIT	C F M	EXT.S.P.	SENSIBLE COOLING	TOTAL COOLING	TOTAL HEATING	AIR TEMP. DEG. FDB	ON COIL DEG. FWB	O S A C F M	OUTSIDE AIR TEMP. DEG. FDB	DEG. FWB	ELEC. STRIP HEAT RATED @ 230 V U.N.G.	HSPF	SEER	SEER*	COP @ 47 DEG. F	CARRIER MODEL USED AS A GUIDE UNLESS OTHERWISE NOTED	REMARKS
AHU/HP-8	1000	0.5	24.25	32.96	35.22	78.00	64.90	75	96.0	77.0	9.0 KW	8.2	14.5	3.70	FV4CNF002/25HCB636	1*2*3*4*5*6*7*8*9*10*11*12*13*14	

1. COOLING CAPACITIES BASED ON 95° AMBIENT AIR TEMPERATURES AND ARE MBH.
 2. ALL REFRIGERANT LINES TO BE INSTALLED AND SIZED PER MANUFACTURER'S INSTALLATION RECOMMENDATIONS.
 3. SCHEDULED CAPACITIES ARE OVERALL CAPACITIES REQUIRED FOR MATCHED HEAT PUMP AND EVAPORATOR COIL WITH 2°F SUCTION LINE LOSS.
 4. PROVIDE INTEGRAL CONTROLS INCLUDING CONTACTORS, CRANKCASE HEATER, 5 MINUTE COMPRESSOR TIME DELAY RELAY AND COMPRESSOR OVER TEMPERATURE (OVERLOAD) PROTECTION.
 5. PROVIDE CONTROLS TO PERMIT COOLING OPERATION TO 20°F. LOW AMBIENT CONTROLS.
 6. PROVIDE LIQUID AND SUCTION LINE SERVICE VALVES/GAUGE PORTS.
 7. PROVIDE HIGH PRESSURE SWITCH, LOW PRESSURE SWITCH.
 8. PROVIDE TIME INITIATED, TEMPERATURE TERMINATED DEFROST CONTROLS.
 9. COORDINATE WITH ELECTRICAL BEFORE ORDERING EQUIPMENT.
 10. PROVIDE FACTORY DX COOLING COIL WITH EXPANSION VALVE FOR REFRIGERANT CONTROL.
 11. PROVIDE UNIT WITH FACTORY MOTOR CONTACTOR, TERMINAL STRIP, AND ALL NECESSARY CONTROLS.
 12. PROVIDE UNIT WITH FACTORY INTEGRAL FILTER RACK TO ACCOMMODATE MANUF. RECOMMENDED FILTER.
 13. PROVIDE UNIT WITH CONDENSATE DRAIN AS REQUIRED.
 14. TWO SPEED HEAT PUMP UNIT. TWO SPEED FAN WITH VFD CONTROLS. TWO STAGES OF COOLING.

MECHANICAL LEGEND	
SYM.	DESCRIPTION
	SUPPLY DUCT IN SECTION (RISE), DASHED (DROP)
	RETURN DUCT IN SECTION (RISE), DASHED (DROP)
CFM	CUBIC FEET PER MINUTE
EF	EXHAUST FAN
AF	ABOVE FINISHED FLOOR
DIA.Ø	DIAMETER
CLG	CEILING
	THERMOSTAT
	PIPE DROP
	PIPE RISE
	MANUAL VOLUME DAMPER
UNO	UNLESS NOTED OTHERWISE
RAF	RETURN AIR FILTER GRILLE
RA	RETURN AIR
SA	SUPPLY AIR
AC	ABOVE CEILING
	LETTER REPRESENTING TAG AT GRILL SCHEDULE.
	NUMBER REPRESENTING CFM.
	FIRE DAMPER
A/C	AIR CONDITIONING
SDR	SMOKE DAMPER
BTUH	BRITISH THERMAL UNITS PER HOUR
-C-	CONDENSATE DRAIN
ON	OUTSIDE AIR INTAKE
CONC	CONCRETE
CONT	CONTINUED, CONTINUATION
-D-	DRAIN
AHU	AIR HANDLING UNIT
DWG	DRAWING
EA	EXHAUST AIR
EAT	ENTERING AIR TEMPERATURE
EDB	ENTERING DRY BULB
HP	HEAT PUMP
EG	EXHAUST GRILLE
ELEC	ELECTRIC, ELECTRICAL
ER	EXHAUST REGISTER
ESP	EXTERNAL STATIC PRESSURE
EXH	EXHAUST
FD	FLOOR DRAIN
CU	CONDENSER UNIT
FLEX	FLEXIBLE
FT	FEET
GPM	GALLONS PER MINUTE
GV	GATE VALVE
HP	HORSE POWER
HVAC	HEATING, VENTILATING, AND AIR CONDITIONING
HTG	HEATING
HW	HOT WATER
HWR	HOT WATER HEATING RETURN
FR	FIRE RATED
IN	INCHES
KW	KILOWATT
LAT	LEAVING AIR TEMPERATURE
LB	POUND
LD	LEAVING DRY BULB
LWB	LEAVING WET BULB
LWT	LEAVING WATER TEMPERATURE
MD	MOTORIZED DAMPER
MCH	MECHANICAL
NTS	NOT TO SCALE
OSA	OUTSIDE AIR
VAV	VAV DIFFUSER
VAV	VARIABLE AIR VOLUME
SG	SUPPLY GRILLE
SP	STATIC PRESSURE
TEMP	TEMPERATURE
TYP	TYPICAL
MVD	MANUAL VOLUME DAMPER
W/	WITH
W/O	WITHOUT
R	REFRIGERANT PIPING (SINGLE LINE INDICATED FOR CLARITY)
	DUCT MOUNTED SMOKE DETECTOR

FAN SCHEDULE													
MARK	C.F.M. HI/LO	S.P. IN. W.G.	MFR	MODEL NO.	MOTOR	MAX. WATTS (HP)	MAX. SPEED HEIGHT (FT)	MAX. NOISE LEVEL (dBA)	DRIVE			ACCESSORIES	GENERAL NOTE: MARK SF=SUPPLY FAN MARK EF=EXHAUST FAN MARK RF=RETURN FAN
									DIRECT	BELT	ELECTRIC DAMPER		
EF1	70	0.25	*	SP-80-VG	6	12	0.6	*	*	*			1x2x3+4
EF2	70	0.25	*	SP-80-VG	6	12	0.6	*	*	*			1x2x3+4
EF3	70	0.25	*	SP-80-VG	6	12	0.6	*	*	*			1x2x3+4
EF4	70	0.25	*	SP-80-VG	6	12	0.6	*	*	*			1x2x3+4
EF5	70	0.25	*	SP-80-VG	6	12	0.6	*	*	*			1x2x3+4
EF6	70	0.25	*	SP-80-VG	6	12	0.6	*	*	*			1x2x3+4
EF7	70	0.25	*	SP-80-VG	6	12	0.6	*	*	*			1x2x3+4
EF8	70	0.25	*	SP-80-VG	6	12	0.6	*	*	*			1x2x3+4
EF9	70	0.25	*	SP-80-VG	6	12	0.6	*	*	*			1x2x3+4
EF10	70	0.25	*	SP-80-VG	6	12	0.6	*	*	*			1x2x3+4
EF11	70	0.25	*	SP-80-VG	6	12	0.6	*	*	*			1x2x4+5
EF12	70	0.25	*	SP-80-VG	6	12	0.6	*	*	*			1x2x3+4

NOTES:
 1. FORWARD CURVED BLADE.
 2. COORDINATE WITH ELECTRICAL BEFORE ORDERING EQUIPMENT.
 3. CONTROL WITH LOCAL LIGHT CIRCUIT OR SEPERATE SWITCH. COORD. WITH ELECTRICAL.
 4. PROVIDE WITH FACTORY DISCONNECT AND SPEED CONTROLLER. MOUNT SPEED CONTROLLER IN ACCESSIBLE WITH EASE LOCATION.
 5. CONTROL TO RUN CONTINUOUS.

HVAC SEQUENCE OF OPERATION

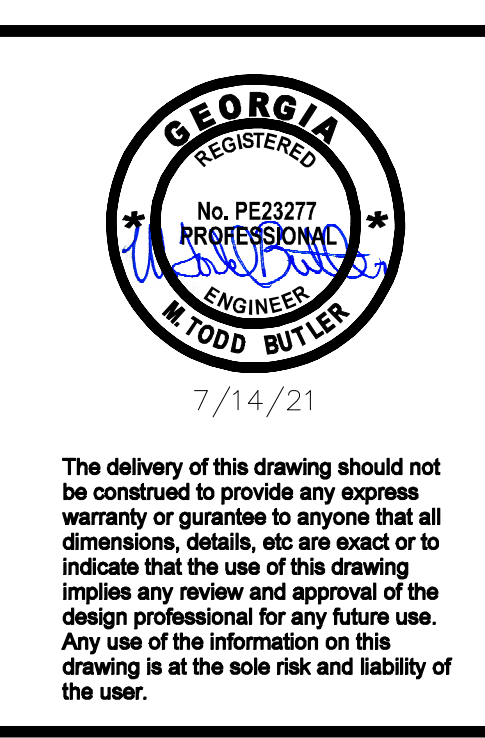
Occupied/Unoccupied Mode: The occupancy mode will be controlled through the thermostats built-in programmable time schedule.
 Supply Fan Control: During occupied mode, the variable speed supply fan will be started when occupied and will run continuously. The supply fan will modulate as needed to satisfy the heating or cooling demand.
 Heat Pump Control: When the zone temperature falls below the heating setpoint the reversing valve will be indexed to provide heating when the compressor is running. When the zone temperature rises above the cooling setpoint the reversing valve will be indexed to provide cooling when the compressor is running.
 Reheat Coil: The reheat coil will be energized to maintain the heating setpoint.
 Humidity Control: The unit will control to maintain zone humidity setpoint as sensed by the thermostat by slowing down the variable speed fan.
 Exhaust fans: Control as indicated.

ROOF VENTILATOR SCHEDULE					
MARK	BROAN MODEL	THROAT SIZE	CFM	SERVES	NOTES
RV-1	634M	6"Ø	70	EF 12	EXHAUST
RV-2	634M	6"Ø	70	EF 7	EXHAUST
RV-3	634M	6"Ø	70	EF 9	EXHAUST
RV-4	634M	6"Ø	70	EF 11	EXHAUST

NOTES:
 1. MAXIMUM PRESSURE DROP SHALL BE 0.1"
 2. FINISH SHALL BE SELECTED BY ARCHITECT.
 3. STEEL CONSTRUCTION, BIRD SCREEN. PROVIDE FACTORY INSULATED ROOF CURB AS REQUIRED.
 4. PROVIDE GRAVITY BD DAMPERS AT ALL VENTILATORS.

UNIT TAG	SA CFM	SA ESP	TSP	Supply Fans		Outside Air			Natural Gas Heat			DX Cooling Coil			Hot Gas Reheat		Electrical Data		PRE FILTER	Indoor Unit Standard of Performance	NOTES						
				HP	BHP	SUMMER	WINTER	HEATING	EAT	TURN	COOLING	Capacity (MBH)	Ent Air	Lvg Air	Coil	EAT	Capacity	Voltage									
				CFM	DB	WB	R DB	CFM	LAT	DOWN	CFM	Sensible	Total	DB	WB	DB	WB	ROWS				FPI	EAT	MBH			
DOAS-1	850	0.8	1.3	1.10	1.0	850	95.00	77.00	20	850	20/103	5:01	850	34.86	54.34	95.0	77.0	53.5	53.4	6	12	53/72	34	230V/1ph	2" MERV 8	AAON V3ARB10161C/CBB0601D1:DoKoDAO	1, 2, 3, 4, 5, 6, 7, 8, 9, 10, 11

Notes:
 1. Unit shall be provided with gear driven, motorized outside air damper with factory mounted DDC actuator.
 2. Unit shall be provided with ECM driven, backward inclined plenum fans. ECM used for balancing purposes.
 3. Unit shall be provided with double wall, 2", foam insulated, R-13 cabinet with exterior polyurethane paint that shall withstand 2500 hour salt spray test, according to ASTM B 117-95 procedure.
 4. Unit shall be provided with factory unitary DDC controller with supply air temperature and outside tempature/humidity sensors with BACnet interface.
 5. Unit shall be provided with double sloped, 304 stainless steel drain pan.
 6. Unit shall be provided with single refrigeration circuit with variable capacity digital scroll compressors on the lead refrigeration circuit and hot gas bypass on the lag circuit.
 7. Unit shall be provided with variable speed condenser fan head pressure control on all condenser fan.
 8. Unit shall be provided with factory mounted electrical disconnect and branch circuit fusing for all high voltage components.
 9. Unit shall be provided with condenser fan coil guards for protection against vandalism and hail.
 10. Unit shall be provided with fully modulating hot gas reheat coil located downstream of evaporator controlled by 3 way sporan stepper valve.
 11. Unit shall be provided with fully modulating hot gas reheat coil located downstream of evaporator controlled by 3 way sporan stepper valve.
 12. Provide separated combustion heat exchanger unit to be field mounted on DOAS AHU. Bu HeatCo or Approved Equivalent. All components factory provided. Heating Unit shall be by HeatCo or Approved equivalent. 75MBH input / 60MBH output. Stainless Steel heat exchanger, 80% Eff., Non-Condensing, Nat. Gas. Complete system shall be coordinated and provided by DOAS manuf. to ensure proper and complete compatibility with DOAS.



Peach County Health Department
 Improvements
 503 Bluebird Blvd, Fort Valley, Georgia 31030

Drawing Issue Schedule	
7/12/2021	PERMIT SET
7/28/2021	ADDENDUM 1

Project No: 2020-27

HVAC SCHEDULES
M3.3

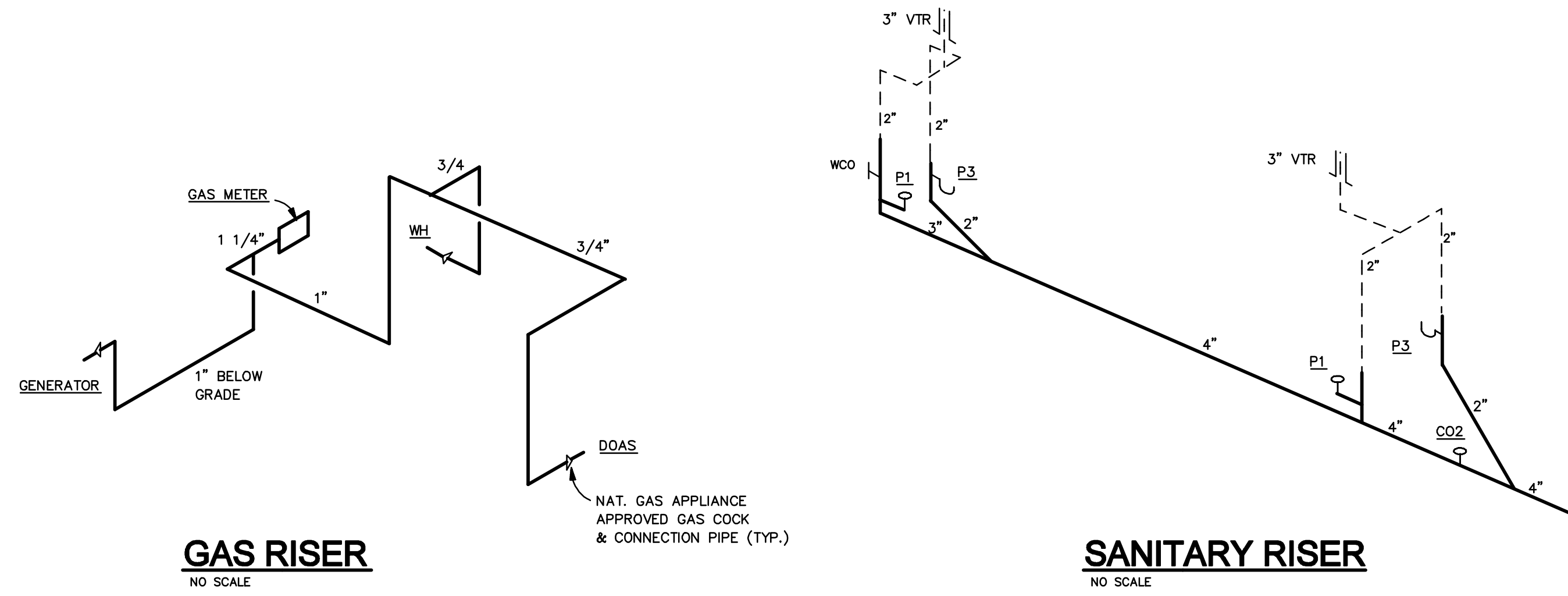
B BUTLER ENGINEERING, INC.
 1506 WEST THIRD AVENUE
 ALBANY, GEORGIA 31707
 PHONE: 229 434 0236
 EMAIL: TODD@BUTLERENG.COM

GENERAL PLAN NOTES: (APPLIES TO ALL PLUMBING SHEETS)

- A. WHERE PLUMBING FIXTURES AND/OR EQUIP. IS TO BE REMOVED AND NO FIXTURE GOING BACK IN, REMOVE PIPING TO BELOW FLOOR/WALL/CEILING AND CAP OR PLUG. REPAIR FLOOR/WALL/CEILING TO MATCH EXISTING. TYPICAL UNLESS NOTED OTHERWISE. COORD. W/ ARCH. DOCUMENTS. FIELD VERIFY.
- B. EXISTING WORK INDICATED WAS TAKEN FROM OLD DRAWINGS. CONTRACTOR SHALL FIELD VERIFY LOCATIONS AND SIZES OF EXISTING PIPING AS WELL AS PIPE SERVICE TYPE. POINTS OF TIE INTO EXISTING PIPING MAY VARY FROM THAT INDICATED AS EXACT LOCATION OF PIPING IS NOT KNOWN.
- C. CONTRACTOR SHALL RUD AND HIGH PRESSURE WASH EXISTING SANITARY SEWER SYSTEM TO INSURE CLEAR DRAINAGE SYSTEM.
- D. VARIOUS PIECES OF EQUIPMENT TO BE REMOVED SHALL REMAIN THE PROPERTY OF THE OWNER. COORDINATE WITH OWNER AND ARCHITECT FOR SPECIFIC INSTRUCTIONS.
- E. COORDINATE WITH ARCHITECTURAL DOCUMENTS, FOR PHASING SCHEDULE TO ENSURE THAT CERTAIN EQUIPMENT AND OTHER ITEMS ARE NOT REMOVED OR ABANDONED PREMATURELY, ALSO THAT SYSTEMS ARE NOT SHUT DOWN PREMATURELY.
- F. REPAIR ALL SURFACES DAMAGED DURING DEMOLITION TO MATCH ADJACENT CONSTRUCTION AND FINISHES.
- G. NEW PLUMBING FIXTURES AND EQUIPMENT SHALL BE INSTALLED PER MANUFACTURE REQUIREMENTS.
- H. NOT USED
- I. FIELD VERIFY PHYSICAL SPACE, ROUGH-IN MEASUREMENTS, ETC. PRIOR TO ORDERING EQUIPMENT OR INSTALLATION.
- J. WHERE REQUIRED, SAW OUT SLAB AS REQUIRED TO INSTALL NEW WORK. REPAIR SLAB WITH 3000 PSI FIBER REINFORCED CONCRETE AND LEVEL TO MATCH EXISTING SURFACES. COORDINATE WITH ARCHITECTURAL DOCUMENTS.
- K. REMOVE GAS PIPING COMPLETELY AND INSTALL NEW GAS PIPING AS INDICATED.
- L. PROVIDE GAS, WASTE AND WATER SERVICES AND FINAL CONNECTIONS TO ALL EQUIPMENT REQUIRING WASTE, GAS, OR WATER.
- M. WASTE, GAS AND WATER, SHALL BE CONNECTED TO EQUIPMENT IN ACCORDANCE WITH MANUFACTURER'S RECOMMENDATIONS.
- N. PROVIDE ISOLATION VALVES @ ALL INDIVIDUAL PIECES OF EQUIP. OR FIXTURES.
- O. ALL FLOOR DRAINS SHALL BE 3" SIZE U.N.O.
- P. COORDINATE FINAL LOCATION OF DRAINS FOR HVAC EQUIPMENT TO INSURE LOCATIONS ARE CORRECT.
- Q. RUN NEW WATER PIPING ABOVE CEILING, U.N.O.
- R. COORDINATE DOM. WATER PIPING RUNS WITH DUCT WORK AND OTHER TRADES. COORDINATE WITH HVAC PLANS.
- S. AT ALL LAVATORIES AND SINKS, PROVIDE MIXING VALVE TO TEMPER HOT WATER TO 110°F
- T. PROVIDE WATERLESS TRAP PRIMERS AT ALL FLOOR DRAINS. MANUF. SHALL BE PRO-SET SURESEAL BY RECTOR SEAL OR EQUIVALENT.
- U. PROVIDE CORING OF HOLES WHERE REQUIRED TO RUN NEW PIPING. SLEEVE SEAL PENETRATIONS AS REQUIRED.
- V. ALL LAWN FAUCETS EXIST TO REMAIN U.N.O. CONTRACTOR SHALL FIELD VERIFY THAT ALL ARE IN PROPER WORKING ORDER. REPAIR OR REPLACE AS REQUIRED.

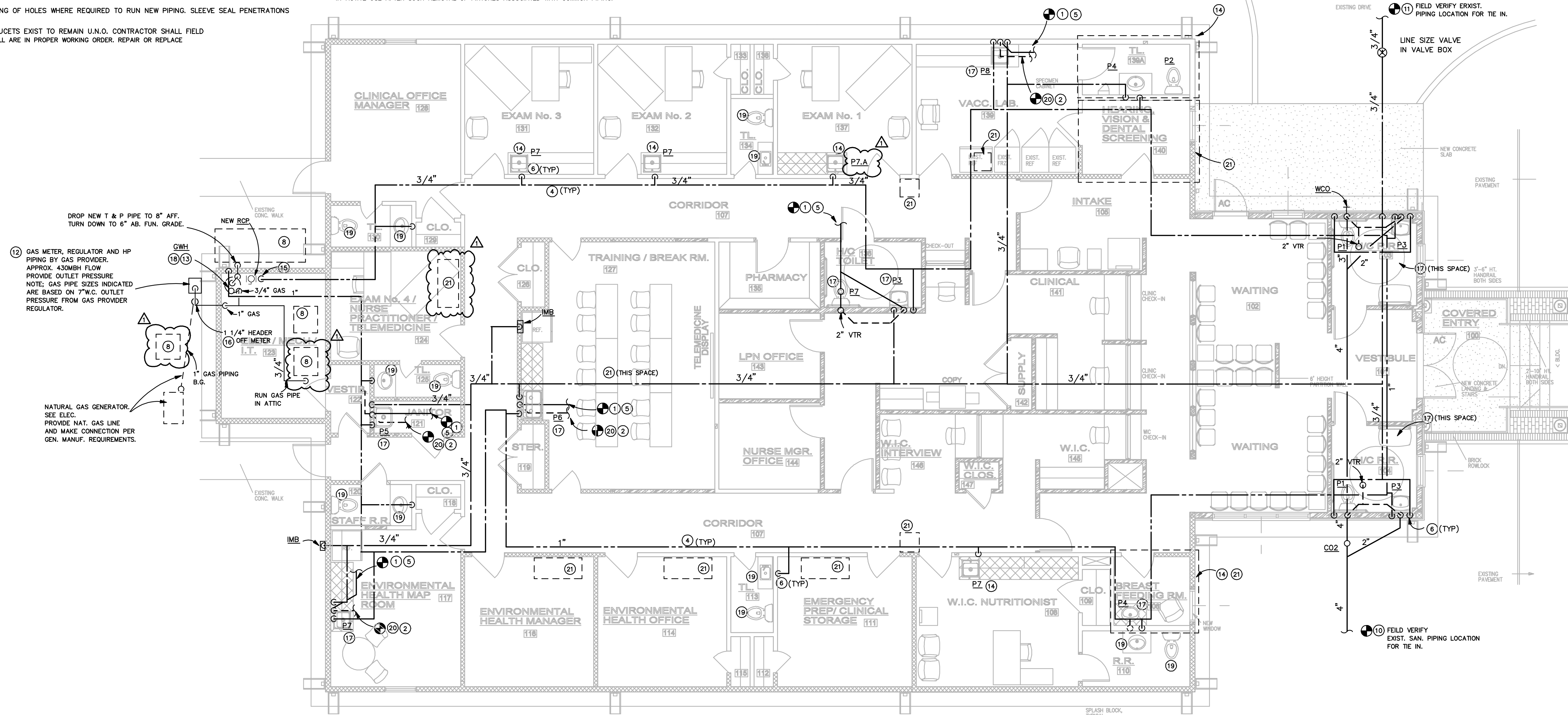
PLUMBING NUMBERED NOTES (APPLIES TO ALL PLUMBING SHEETS)

1. EXTEND AND CONNECT SANITARY PIPING AS REQUIRED TO ENSURE COMPLETE & PROPER OPERATION OF NEW PLUMBING FIXTURE. SIZE OF EXIST. SAN. PIPING FOR TIE IN SHALL BE 2" MIN. FOR LAVATORIES AND SINKS, AND 4" MIN. FOR WATER CLOSETS
2. NEW PLUMBING VENT ABOVE CEILING.
3. EXISTING SANITARY PIPING.
4. NEW PIPE ABOVE CEILING.
5. NEW SANITARY PIPING BELOW SLAB.
6. DROP NEW DOMESTIC WATER PIPING IN WALL AND CONNECT TO FIXTURE AS REQUIRED. CAP OFF EXISTING HOT WATER PIPING.
7. NOT USED.
8. HVAC EQUIPMENT. COORDINATE W/MECHANICAL.
9. NOT USED.
10. TAP EXISTING SANITARY WITH NEW SANITARY PIPING. FIELD VERIFY EXACT LOCATION.
11. TAP EXISTING DOMESTIC WATER PIPING AND EXTEND AS INDICATED TO SERVE NEW FIXTURE OR EQUIPMENT AT NEW LOCATION. FIELD VERIFY.
12. GAS METER. FIELD VERIFY LOCATION.
13. REMOVE EXIST. FLUE AND INSTALL NEW CONCENTRIC FLUE AND COMBUSTION AIR VENT THRU ROOF TO BE FURNISHED WITH WATER HEATER. COMPLETE INSTALLATION PER WH MANUF. REQUIREMENTS, AND ALL APPLIABLE CODES. COORDINATE WITH WATER HEATER MANUF.
14. REPLACE EXISTING FIXTURE COMPLETELY. MODIFY EXISTING PLUMBING ROUGH IN TO ACCOMMODATE NEW FIXTURE AND NEW ROUGH IN LOCATION.
15. DROP PIPING ON WALL. CONNECT TO NEW REGR. PUMP PER MANUF. REQUIREMENTS.
16. GAS PIPING TO ACCOMMODATE NEW EQUIP. EXTEND AND CONNECT TO UNIT PER MANUF. REQUIREMENTS AND RECOMMENDATIONS.
17. NEW FIXTURE AT NEW LOCATION. PROVIDE COMPLETE NEW PLUMBING ROUGH IN FOR DOM. WATER & SANITARY PIPING AS REQUIRED.
18. REPLACE EXISTING WATER HEATER WITH NEW WATER HEATER. CONNECT TO EXIST. DOMESTIC CW PIPING. PROVIDE NEW T & P, HW, AND HWR PIPING AS INDICATED.
19. EXISTING PLUMBING FIXTURE TO REMAIN. CONTRACTOR TEST TO MAKE SURE FIXTURE IS IN PROPER WORKING ORDER. REPAIR AS REQUIRED, PER MANUF. RECOMMENDATIONS TO ENSURE PROPER WORKING ORDER.
20. EXTEND NEW PLUMBING VENT AND TIE INTO EXIST. PLUMBING VENT TO THRU ROOF. FIELD VERIFY LOCATIONS OF EXISTING PLUMBING VENT.
21. REMOVE EXISTING PLUMBING FIXTURES AND ASSOCIATED PIPING TO BELOW FLOOR/ WALL AND CAP OR PLUG. REPAIR SURFACES TO MATCH EXISTING. DURING REMOVAL, CONTRACTOR SHALL ENSURE THAT FIXTURE LOCATIONS WHICH EXIST TO REMAIN IN USE, SHALL REMAIN IN ACTIVE USE AFTER SUCH REMOVAL OF FIXTURES ASSOCIATED WITH COMMON PIPING.



GAS RISER
NO SCALE

SANITARY RISER
NO SCALE



FLOOR PLAN- PLUMBING

3/16"=1'-0"

REFER TO SHEET P1.0 FOR PLUMBING GENERAL NOTES

609 Cherry Street, Macon, GA 31201
478.742.1208 / www.bbbinc.com
© COPYRIGHT 2020 BTBB inc.
NOT FOR REPRODUCTION

The delivery of this drawing should not be construed to provide any express warranty or guarantee to anyone that all dimensions, details, etc are exact or to indicate that the use of this drawing implies any review and approval of the design professional for any future use. Any use of the information on this drawing is at the sole risk and liability of the user.

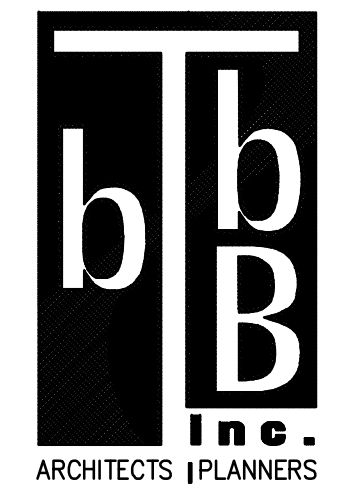
Peach County Health Department
Improvements
503 Bluebird Blvd. Fort Valley, Georgia 31030

Drawing Issue Schedule	
7/12/2021	PERMIT SET
7/28/2021	ADDENDUM 1
Project No:	2020-27

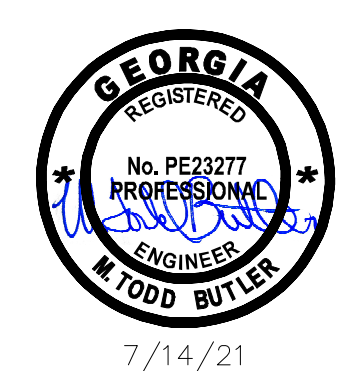
FLOOR PLAN- PLUMBING
P1.1

B BUTLER ENGINEERING, INC.
1506 WEST THIRD AVENUE
ALBANY, GEORGIA 31707
PHONE: 229-434-0236
EMAIL: TODD@BUTLERENG.COM

7/27/2021 5:28 PM



609 Cherry Street, Macon, GA 31201
478.742.1208 / www.btbbinc.com
© COPYRIGHT 2020 BTBB inc.
NOT FOR REPRODUCTION



7/14/21
The delivery of this drawing should not be construed to provide any express warranty or guarantee to anyone that all dimensions, details, etc. are exact or to indicate that the use of this drawing implies any review and approval of the design professional for any future use. Any use of the information on this drawing is at the sole risk and liability of the user.

Peach County Health Department
Improvements
503 Bluebird Blvd. Fort Valley, Georgia 31030

Drawing Issue Schedule	
7/12/2021	PERMIT SET
7/28/2021	ADDENDUM 1
Project No:	2020-27

PLUMBING SCHEDULES
P3.1

GENERAL WATER CONSERVATION
MAXIMUM WATER FLOW FOR FIXTURES: WATER CLOSETS = 1.28/GAL/FLUSH, URINALS = 0.5 GAL/FLUSH, LAVATORY FAUCET = 0.5 GPM, SHOWER HEAD = 2.5 GPM, SINK FAUCET = 2.0 GPM.
PLUMBING FIXTURE SCHEDULE KEYNOTES
1 RIM HEIGHT FOR GUIDANCE ONLY. SEE ARCHITECTS DRAWINGS FOR EXACT MOUNTING HEIGHT. ROUGH WATER AND SANITARY CONNECTION AS REQUIRED. RIM HEIGHT INCLUDES SPECIFIED SEAT ON WATER CLOSETS.
2 PROVIDE "TRUEBRO LAV SHIELD" PROTECTIVE COVERS ON WASTE AND SUPPLY PIPING. INSTALL ALL FITTINGS INCLUDING ELEC. POWER AND MIXING VALVE. EQUIP. TO FIT WITHIN SHIELD COVER.
3 PROVIDE 7" STRAINER ON 3" DRAINS AND 9" STRAINER ON 4" DRAINS. PROVIDE ROUND TOP FOR ALL FLOOR DRAINS.
4 RIM FLUSH WITH FINISHED FLOOR.
5 PROVIDE FAUCET WITH VANDAL RESISTANT AERATOR.
6 PROVIDE SMITH 0710-M30 CARRIERS WHERE LAVATORIES ARE MOUNTED ON CHASE WALLS. PROVIDE SMITH 0792-M30 CARRIER WHERE LAVATORIES ARE MOUNTED ON SINGLE BLOCK WALL. COORDINATE CARRIERS WITH ASSOCIATED FIXTURE.

PLUMBING LEGEND	
SYM.	DESCRIPTION
AFF	ABOVE FINISHED FLOOR
CLG	CEILING
	CHECK VALVE
	PIPE DROP
	PIPE RISE
	DOMESTIC COLD WATER PIPING
	DOMESTIC HOT WATER PIPING
	DOMESTIC HOT WATER RECIRCULATING PIPING
	SANITARY PIPING
	GATE VALVE
	BALL VALVE
UNO	UNLESS NOTED OTHERWISE
	PLUMBING VENT
	STRAINER
	UNION
	BACKFLOW PREVENTER
COTG	CLEANOUT TO GRADE
WCO	WALL CLEANOUT
FCO	FLOOR CLEANOUT
WCB	WASHER MACHINE CONNECTOR BOX
BS	BELOW SLAB
BF	BELOW FLOOR
BG	BELOW GRADE
AC	ABOVE CEILING
CI	CAST IRON
HW	HOT WATER PIPING
CW	COLD WATER PIPING
HTG	HEATING
HWR	HOT WATER RETURN
HWS	HOT WATER SUPPLY
HD	HUB DRAIN
FD	FLOOR DRAIN
	CONNECT NEW TO EXISTING

PLUMBING FIXTURE SCHEDULE										
#	FIXTURE	DISABLED ACCESSIBLE	FLOOR TO RIM ①	WASTE		WATER SUPPLY		WATER FIX. CONN.		BASIS OF DESIGN
				BELOW FLOOR	FIXTURE CONN.	COLD	HOT	COLD	HOT	
P1	WATER CLOSET ACCESSIBLE	YES	18"	4"	4"	1/2"	-	1/2"	-	K-3493 VITREOUS CHINA, ELONGATED BOWL. PRESSURE ASSIST. KOHLER-HAVY DUTY CLOW CLOSE SEAT WITH OPEN FRONT. TANK COVER LOCKS. ADA & GAC COMPLIANT. COORDINATE WITH ARCHITECTURAL GRAB BARS. PROVIDE INTELLI-FLUSH AUTOMATIC FLUSHING SYSTEM FOR HANDS FREE OPERATION. INFRARED TECHNOLOGY. ADJUSTABLE FLUSH DELAY. ADA COMPLIANT. OVERRIDE BUTTON. CHROME TRIM. FOUR C CELL AND FOUR AA BATTERIES TO BE PROVIDED. 3 YEAR LIMITED WARRANTY. 24 HOUR FLUSH CYCLE FEATURE. COORDINATE WITH TOILET TO BE PROVIDED TO ENSURE COMPATIBILITY.
P2	WATER CLOSET STANDARD	-	15"	4"	4"	1/2"	-	1/2"	-	K-3505 VITREOUS CHINA, ELONGATED BOWL. PRESSURE ASSIST. KOHLER-HAVY DUTY CLOW CLOSE SEAT WITH OPEN FRONT. TANK COVER LOCKS. COORDINATE WITH ARCHITECTURAL GRAB BARS. ADA & GAC COMPLIANT. COORDINATE WITH ARCHITECTURAL GRAB BARS. PROVIDE INTELLI-FLUSH AUTOMATIC FLUSHING SYSTEM FOR HANDS FREE OPERATION. INFRARED TECHNOLOGY. ADJUSTABLE FLUSH DELAY. ADA COMPLIANT. OVERRIDE BUTTON. CHROME TRIM. FOUR C CELL AND FOUR AA BATTERIES TO BE PROVIDED. 3 YEAR LIMITED WARRANTY. 24 HOUR FLUSH CYCLE FEATURE. COORDINATE WITH TOILET TO BE PROVIDED TO ENSURE COMPATIBILITY.
P3	WALL MOUNTED LAVATORY ACCESSIBLE	YES	29" APRON BOTTOM	2"	1-1/2"	1/2"	1/2"	1/2"	1/2"	K-2032 VITREOUS CHINA, 4" CENTER HOLE DRILL. MCGUIRE PIPE X 3/8" ANGLE SUPPLIES WITH STOPS. STAINLESS BRAIDED RISER. MCGUIRE 17 GAUGE CP BRASS P-TRAP W/CO. SLOAN SF-2250-4-BAT-TEE-CP-0.5GPM-MLM-IR-FCT TOUCHLESS FAUCET WITH 4" TRIM PLATE, BACK-CHECK TEE, ADA COMPLIANT. MCGUIRE PRO DRAIN WCSAN GRID STRAINER WITH 1-1/4" OFFSET TAIL PIECE. PROVIDE FACTORY COVER FOR FITTINGS BENEATH LAVATORY. COVER SHALL BE AS MANUFACTURED BY TRUEBRO LAV-SHIELD. RIGID HI-IMPACT STAIN RESISTANT PVC COLOR SHALL BE WHITE. EQUIVALENTS: MCGUIRE OR ENGINEERING BRASS CO. PROVIDE WATTS LFUSG SERIES MIXING VALVE BENEATH SINK, 120F DELIVERY TEMP.
P4	DROP IN MOUNTED LAVATORY ACCESSIBLE	YES	29" APRON BOTTOM	2"	1-1/2"	1/2"	1/2"	1/2"	1/2"	K-2196 VITREOUS CHINA, 4" CENTER HOLE DRILL. MCGUIRE PIPE X 3/8" ANGLE SUPPLIES WITH STOPS. STAINLESS BRAIDED RISER. MCGUIRE 17 GAUGE CP BRASS P-TRAP W/CO. SLOAN SF-2250-4-BAT-TEE-CP-0.5GPM-MLM-IR-FCT TOUCHLESS FAUCET WITH 4" TRIM PLATE, BACK-CHECK TEE, ADA COMPLIANT. MCGUIRE PRO DRAIN WCSAN GRID STRAINER WITH 1-1/4" OFFSET TAIL PIECE. PROVIDE FACTORY COVER FOR FITTINGS BENEATH LAVATORY. COVER SHALL BE AS MANUFACTURED BY TRUEBRO LAV-SHIELD. RIGID HI-IMPACT STAIN RESISTANT PVC COLOR SHALL BE WHITE. EQUIVALENTS: MCGUIRE OR ENGINEERING BRASS CO. PROVIDE WATTS LFUSG SERIES MIXING VALVE BENEATH SINK, 120F DELIVERY TEMP.
P5	MOP SINK	-	-	3"	3"	1/2"	1/2"	1/2"	1/2"	FIAT TSB3000, 24"x24", INTEGRAL CAST DRAIN, CHROMIUM PLATED, STAINLESS STEEL CURB CAPS, BUMPER GUARD. PROVIDE B32AA HOSE & BRACKET. MOP HANGER BRACKET 889CC. KOHLER K-8908 FAUCET WITH INTEGRAL STOPS. VACUUM BREAKER, TOP BRACE, PAIL HOOK. 30" MOUNTING HEIGHT. STAINLESS STEEL WALL GUARD.
P6	BREAK ROOM SINK	YES	C.T.	2"	2"	1/2"	1/2"	1/2"	1/2"	ELKAY LR2025055 TWO COMP. A8 GAUGE TYPE 304 STAINLESS STEEL. ADA COMPLIANT DEPTH OF 5.5" DELTA 16970-SD-DST ADA FAUCET MCGUIRE 1151AWC. OFFSET DRAIN WITH 151 BASKET STRAINERS & 17 GA. PROVIDE WATTS LFUSG SERIES MIXING VALVE BENEATH SINK, 120F DELIVERY TEMP.
P7	EXAM ROOM SINK	NO	C.T.	2"	2"	1/2"	1/2"	1/2"	1/2"	ELKAY LR1919, 7.5" DEEP. 18 GAUGE TYPE 304 STAINLESS STEEL. SLOAN EBF-775-BAT-ADM-CP-2.2GPM-LAM-IR-FCT TOUCHLESS FAUCET WITH 4" TRIM PLATE, BACK-CHECK TEE. MCGUIRE 1151AWC. OFFSET DRAIN WITH 151 BASKET STRAINERS & 17 GA. PROVIDE WATTS LFUSG SERIES MIXING VALVE BENEATH SINK, 120F DELIVERY TEMP. PROVIDE FACTORY COVER FOR FITTINGS BENEATH LAVATORY. COVER SHALL BE AS MANUFACTURED BY TRUEBRO LAV-SHIELD. RIGID HI-IMPACT STAIN RESISTANT PVC COLOR SHALL BE WHITE. EQUIVALENTS: MCGUIRE OR ENGINEERING BRASS CO. PROVIDE GUARDIAN G1849 SWING DOWN EMERG. EYE WASH, FACTORY G6020 TEMPERING VALVE.
P7A	EXAM ROOM SINK ADA	YES	C.T.	2"	2"	1/2"	1/2"	1/2"	1/2"	ELKAY LR2025055 TWO COMP. A8 GAUGE TYPE 304 STAINLESS STEEL. ADA COMPLIANT DEPTH OF 5.5" DELTA 16970-SD-DST ADA FAUCET MCGUIRE 1151AWC. OFFSET DRAIN WITH 151 BASKET STRAINERS & 17 GA. PROVIDE WATTS LFUSG SERIES MIXING VALVE BENEATH SINK, 120F DELIVERY TEMP. PROVIDE FACTORY COVER FOR FITTINGS BENEATH LAVATORY. COVER SHALL BE AS MANUFACTURED BY TRUEBRO LAV-SHIELD. RIGID HI-IMPACT STAIN RESISTANT PVC COLOR SHALL BE WHITE. EQUIVALENTS: MCGUIRE OR ENGINEERING BRASS CO. PROVIDE GUARDIAN G1849 SWING DOWN EMERG. EYE WASH, FACTORY G6020 TEMPERING VALVE.
P8	LAB ROOM SINK	NO	C.T.	2"	2"	1/2"	1/2"	1/2"	1/2"	ELKAY LR2219, 7.5" DEEP. 18 GAUGE TYPE 304 STAINLESS STEEL. SLOAN EBF-775-BAT-ADM-CP-2.2GPM-LAM-IR-FCT TOUCHLESS FAUCET WITH 4" TRIM PLATE, BACK-CHECK TEE. MCGUIRE 1151AWC. OFFSET DRAIN WITH 151 BASKET STRAINERS & 17 GA. PROVIDE WATTS LFUSG SERIES MIXING VALVE BENEATH SINK, 120F DELIVERY TEMP. PROVIDE GUARDIAN G1849 SWING DOWN EMERG. EYE WASH, FACTORY G6020 TEMPERING VALVE.
IMB	ICE MAKER BOX	-	36"	-	-	1/2"	1/2"	1/2"	1/2"	GUY GREY OR WATER TITE WITH WATER HAMMER ARRESTOR. (FIRE RATED WHERE LOCATED IN FIRE RATED WALL)
CO-1	CLEANOUT (INTERIOR)	-	-	-	-	-	-	-	-	SMITH 4031 ④
CO-2	CLEANOUT (EXTERIOR)	-	-	-	-	-	-	-	-	SMITH 4291 (UNPAVED AREA) SMITH 4031 (PAVED AREA)
WCO	WALL CLEANOUT	-	-	-	-	-	-	-	-	SMITH 4531S

NOTE: MOUNT @ HEIGHT AFF AS REQUIRED BY ADA & GAC. COORDINATE ALL MOUNTING HEIGHTS WITH ARCHITECTURAL DOCUMENTS AND FIRE MARSHAL REQUIREMENTS BEFORE ORDERING FIXTURES

THERMOSTATIC/PRESSURE BALANCE MIXING VALVE SCHEDULE										
MARK	PIPING		MAX PRESSURE DROP	CAPACITY GPM	TEMPERATURE			SYMMONS MODEL NO.	NOTES	LOC.
	INLETS	OUTLET			COLD	HOT	TEMPERED			
TMV 1	3/4"	3/4"	15 LBS.	0.5-58	50	140	120	7-200A	1; 2; 3; 4; 5; 6; 7; 8; 9	139

NOTES:
1. WALL MOUNTED LESS BOX.
2. TEMP CONTROL SERIES RECIRCULATING THERMOSTATIC MIXING VALVE AS REQUIRED FOR FIXTURES SERVED.
3. FACTOR ASSEMBLED AND TESTED.
4. CHECK STOPS. REMOVABLE, REPLACEABLE CARTRIDGE. STAINLESS STEEL PISTON.
5. THERMAL MOTOR WITH TURBULATOR.
6. VOLUME CONTROL VALVE.
7. BI-METAL THERMOMETER
8. BRASS PIPES, FITTINGS, UNIONS.
9. STANDARD ROUGH BRONZE FINISH.

GAS FIRED TANK WATER HEATER SCHEDULE								
MARK	STORAGE CAPACITY	HEATING MEDIUM	VOLTAGE	INPUT MBH	TEMPERATURE RISE	FIRST HR RATING	BRADFORD WHITE MODEL.	LOCATION
GWH-1	50 GAL	NAT. GAS	120V FOR CONTROLS	60	80	103 GAL	LG2PDV50H603N	MECH

NOTES:
1. REFER TO PLUMBING SPECIFICATIONS.
2. COORDINATE ELECTRICAL REQUIREMENTS WITH ELECTRICAL ENGINEERING DOCUMENTS BEFORE ORDERING EQUIPMENT.
3. ENSURE ADEQUATE INSTALLATION AND MAINTENANCE CLEARANCE BEFORE ORDERING EQUIPMENT
4. PROVIDE WITH FACTORY HEAT TRAPS AS REQUIRED.
5. EFFICIENCY SHALL COMPLY WITH CURRENTLY ADOPTED ASHRAE 90.1 AND INTERNATIONAL ENERGY CODE.

PUMP SCHEDULE										
MARK	PUMP TYPE	BASIS OF DESIGN MANUFACTURER	MODEL NUMBER	RPM	HP	GPM	FEET HEAD	*ELECTRICAL		REMARKS
								VOLTS	PHASE	
RC1	RECIRCULATING	TACO	014	3520	1/6	5	18	115	1	110F RECIRCULATING LINE.

* VERIFY ELECTRIC POWER REQUIREMENTS WITH ELECTRICAL PLANS, WHICH TAKE PRECEDENCE OVER THIS INFORMATION.

B BUTLER ENGINEERING, INC.
1506 WEST THIRD AVENUE
ALBANY, GEORGIA 31707
PHONE: 229.434.0236
E-MAIL: TODD@BUTLERENG.COM

7/27/2021 6:01 PM