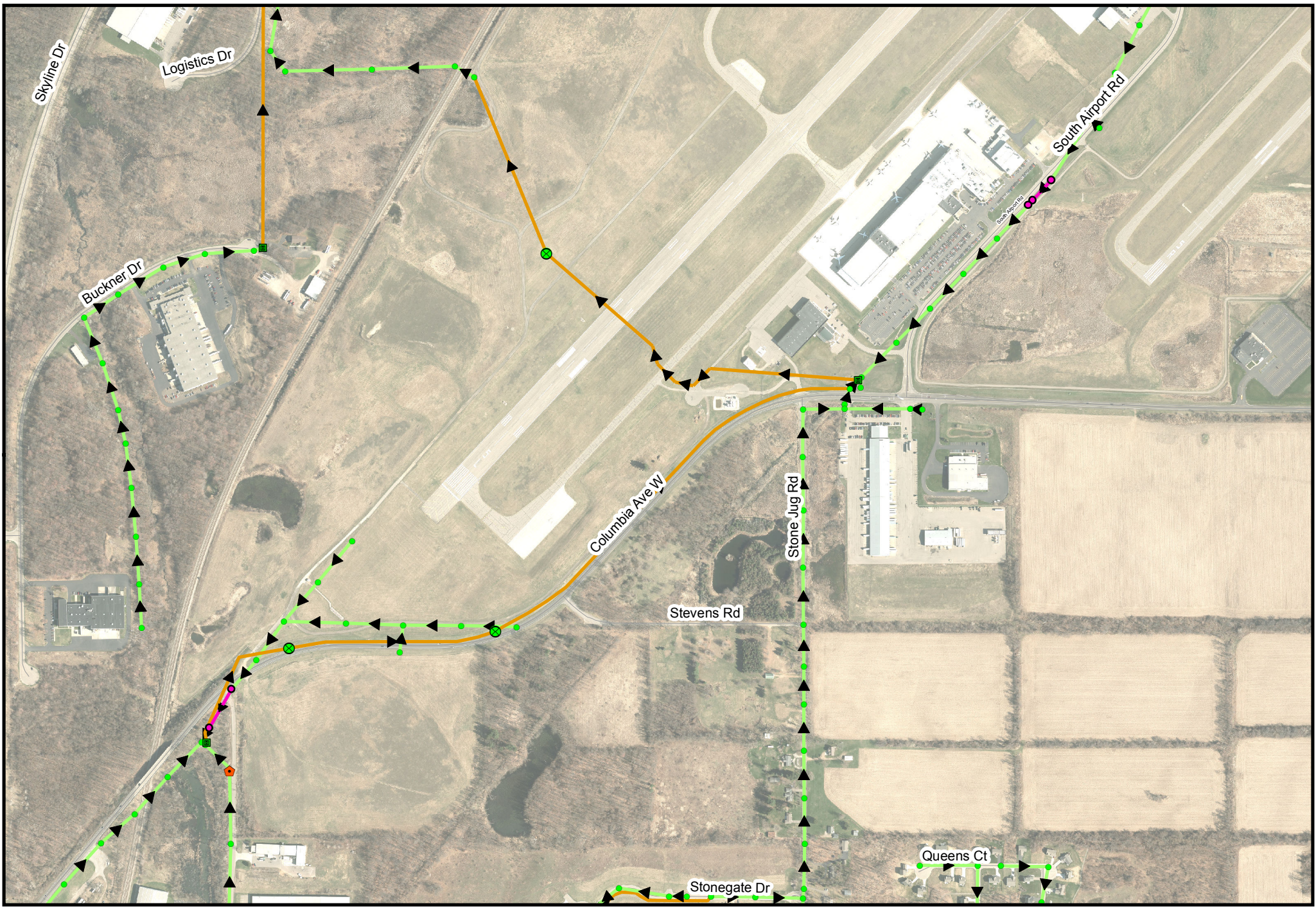


2018 Sewer Cleaning Needed							
<i>Road</i>	<i>Segment</i>	<i>Downstream Manhole</i>	<i>Upstream Manhole</i>	<i>Length</i>	<i>Size</i>	<i>Off-Road</i>	
Sonoma Rd	58895	C11-2	C11-1	341'	8"	No	
Sonoma Rd	58908	C11-3	C11-2	366'	8"	No	
Watkins Rd	59752	C11-18	C11-19	278'	18"	No	
Watkins Rd	59342	C11-17	C11-18	439'	18"	Yes	
Watkins Rd	59771	C11-16	C11-17	407'	18"	Yes	
Watkins Rd	59710	C11-15	C11-16	429'	18"	Yes	
Watkins Rd	59340	D11-30	C11-15	402'	18"	Yes	
Watkins Rd	58611	D11-29	D11-30	307'	21"	Yes	
Geiger Ave	51019	C06-1058	C06-137	78'	8"	No	Roots
Oakley St	50814	C06-141	C06-140	64'	8"	No	Roots
Simmons Ave	50210	C05-25	C05-26	205'	8"	No	
Simmons Ave	50211	C05-24	C05-25	201'	8"	No	
Simmons Ave	60236/50209	C05-24	C05-23	191'	8"	No	
Senate St	50215	C05-22	C05-24	194'	8"	No	
South Airport Rd	57099	C09-232	C09-233	167'	15"	No	
South Airport Rd	57117	C09-231	C09-232	43'	15"	No	
Columbia Ave W	57848	B09-10	B09-9	276'	8"	No	
Harmonia Rd	52735	B06-213	B07-216	431'	30"	Yes	
Evergreen Rd	54810	B08-36	B08-35	243'	8"	Yes	Roots
Evergreen Rd	54811	B08-37	B08-36	209'	8"	Yes	Roots
Brady Rd	51359	B06-128	B06-127	289'	8"	Yes	Roots
Brady Rd	51413	B06-126	B06-124	230'	8"	Yes	
Brady Rd	51461	B06-124	B06-125	489'	8"	Yes	
Hill Brady Rd	52368	B06-8	B06-7	213'	36"	Yes	
Hill Brady Rd	52274	B06-145	B06-146	277'	10"	Yes	
Harmonia Rd	60318	B06-156	B06-437	184'	12"	Yes	
Harmonia Rd	52246	B06-157	B06-156	354'	12"	Yes	Roots

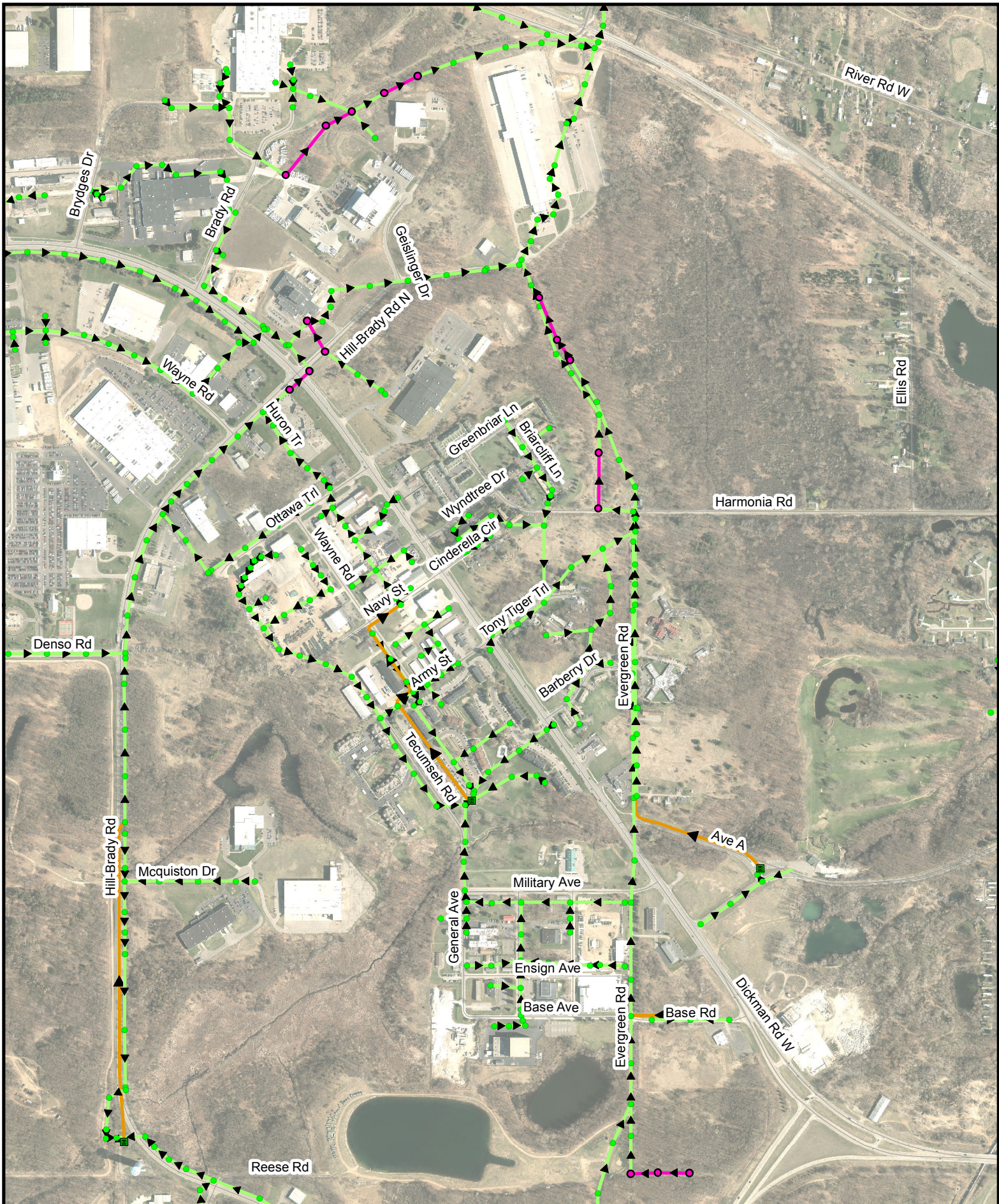
2018 Sewer Cleaning Needed							
<i>Road</i>	<i>Segment</i>	<i>Downstream Manhole</i>	<i>Upstream Manhole</i>	<i>Length</i>	<i>Size</i>	<i>Off-Road</i>	
Lagrange Ave	54980	F06-383	F06-5	178'	8"	No	
Raymond Rd	52964	E07-779		200'	12"	No	Roots
Raymond Rd	53125	E07-778	F07-806	56'	10"	No	
Raymond Rd	53167	F07-806	E07-804	118'	10"	No	
Raymond Rd	53249	E07-804	E07-803	214'	10"	No	
Raymond Rd	53334	E07-803	E07-802	229'	10"	No	



2018 Sewer Cleaning Needed

NEEDS TO BE CLEANED		EXISTING SANITARY (NO CLEANING REQUIRED)	
	SANITARY MAINS TO CLEAN		Gravity Main
	ASSOCIATED SANITARY MANHOLES		Cleanout
			Force Main
			Lift Stations

Every reasonable effort has been made to assure the accuracy of this map and associated data. The City of Battle Creek (hereinafter "City") makes no warranty, representation, or guarantee as to the content, sequence, accuracy, timeliness, or completeness of any data herein. The user of this map should not rely on the data provided herein for any reason. The City explicitly disclaims any representations and warranties, including, without limitation, the implied warranties of merchantability and fitness for a particular purpose. The City shall assume no liability for any decision made or actions taken or not taken by the user of the map in reliance upon any information or data furnished hereunder. To be sure of the accuracy, please check with City staff for updated information.



2018 Sewer Cleaning Needed

NEEDS TO BE CLEANED

— SANITARY MAINS TO CLEAN

● ASSOCIATED SANITARY MANHOLES

EXISTING SANITARY (NO CLEANING REQUIRED)

— Gravity Main

— Force Main

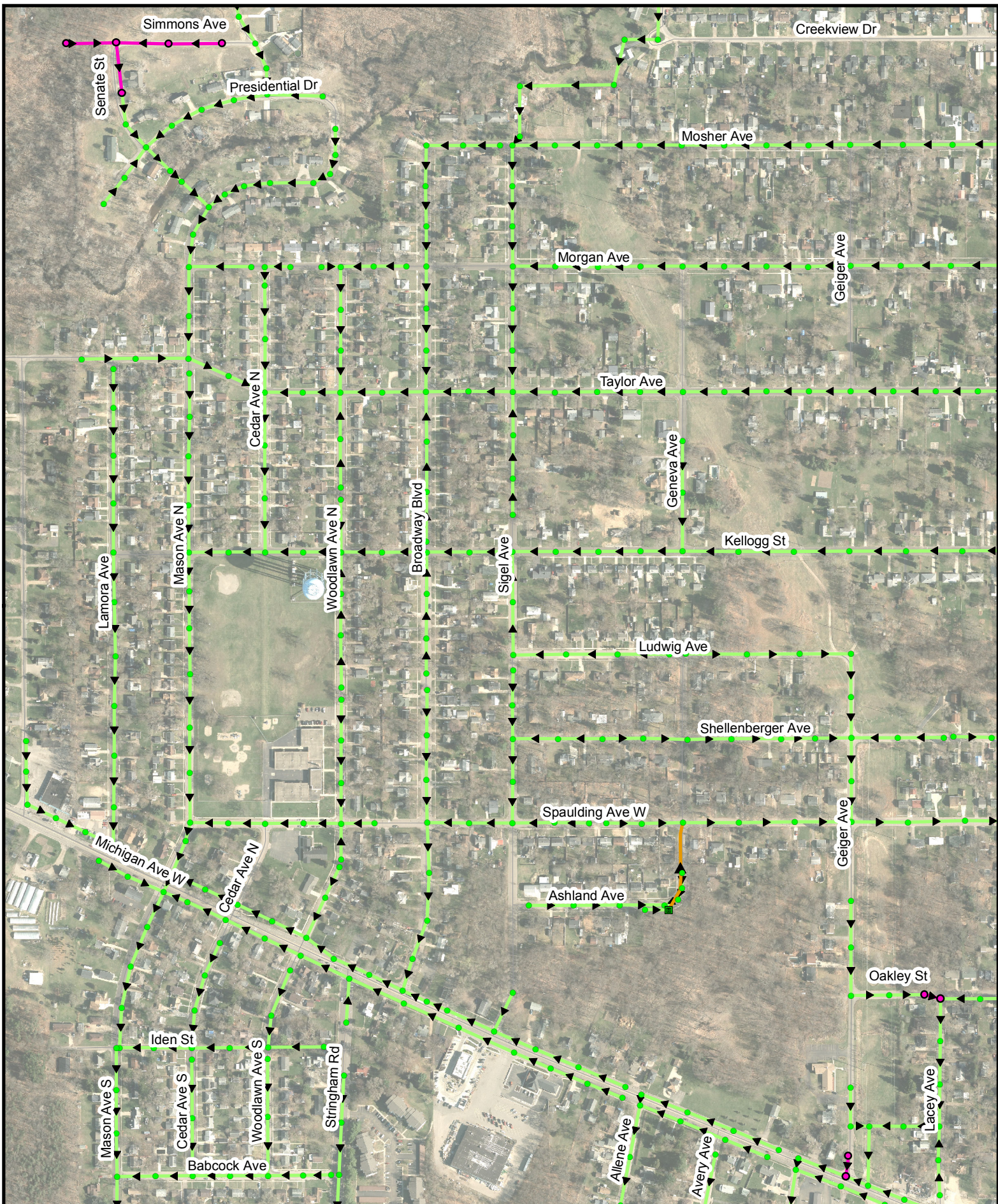
● Manhole

● Cleanup

■ Lift Stations



Every reasonable effort has been made to ensure the accuracy of this map and associated data. The City of Bates Creek (hereinafter "City") makes no warranty, representation, or guarantee as to the content, accuracy, timeliness, or completeness of any data herein. This use of this map should not rely on the data provided herein for any reason. The City expressly disclaims any representations and warranties, including, without limitation, the implied warranties of merchantability and fitness for a particular purpose. The City shall assume no liability for any decision made or action taken or not taken by the user of the map in reliance upon any information or data furnished hereunder. To be sure of the accuracy, please check with City and/or associated information.



2018 Sewer Cleaning Needed

NEEDS TO BE CLEANED

— SANITARY MAINS TO CLEAN

● ASSOCIATED SANITARY MANHOLES

EXISTING SANITARY (NO CLEANING REQUIRED)

— Gravity Main

— Force Main

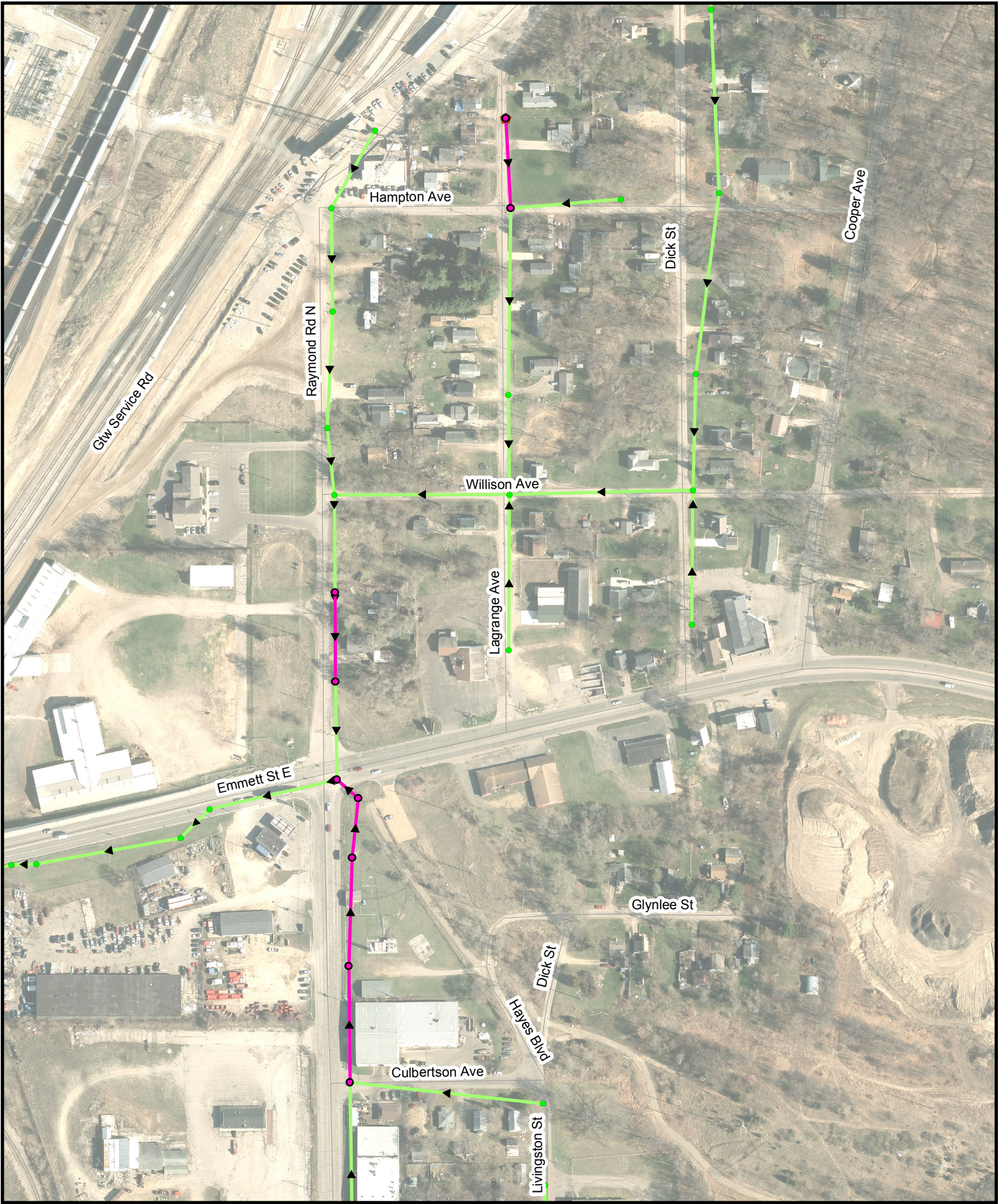
● Manhole

● Cleanout

■ Lift Stations



Every reasonable effort has been made to ensure the accuracy of this map and associated data. The City of Bates, Missouri ("City") makes no warranty, representation, or guarantee as to the content, accuracy, timeliness, or completeness of any data herein. This use of the map should not rely on the data provided herein for any reason. The City explicitly disclaims any implied warranties of merchantability and fitness for a particular purpose. The City shall assume no liability for any decision made or action taken or not taken by the user of the map in reliance upon any information or data furnished hereunder. To be sure of the accuracy, please check with City and/or the associated information.



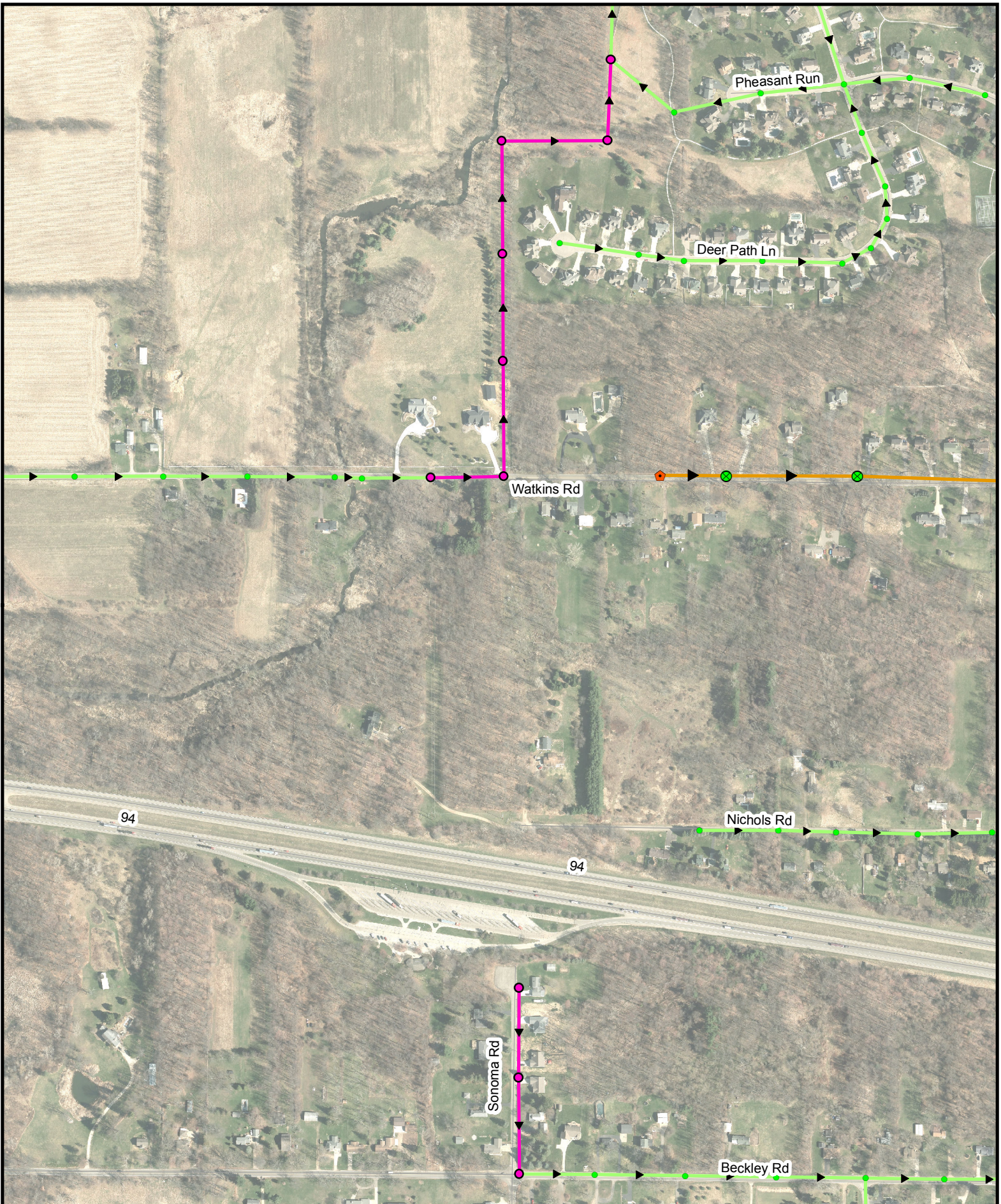


2018 Sewer Cleaning Needed

NEEDS TO BE CLEANED	EXISTING SANITARY (NO CLEANING REQUIRED)
<p>→ SANITARY MAINS TO CLEAN</p> <p>● ASSOCIATED SANITARY MANHOLES</p>	<p>→ Gravity Main</p> <p>→ Force Main</p> <p>● Manhole</p> <p>● Cleanout</p> <p>■ Lift Stations</p>



Every responsible effort has been made to ensure the accuracy of this map and associated data. The City of Bates Creek (hereinafter "City") makes no warranty, representation, or guarantee as to the content, accuracy, timeliness, or completeness of any data herein. This use of the map should not rely on the data provided herein for any reason. The City explicitly disclaims any implied warranties of merchantability and fitness for a particular purpose. The City shall assume no liability for any decision made or actions taken or not taken by the user of the map in reliance upon any information or data furnished hereunder. To be sure of the accuracy, please check with City and/or the associated collection system.



2018 Sewer Cleaning Needed

NEEDS TO BE CLEANED		EXISTING SANITARY (NO CLEANING REQUIRED)	
	SANITARY MAINS TO CLEAN		Gravity Main
	ASSOCIATED SANITARY MANHOLES		Cleanout
			Lift Stations



Every reasonable effort has been made to ensure the accuracy of this map and associated data. The City of Bates Creek (hereinafter "City") makes no warranty, representation, or guarantee as to the content, accuracy, timeliness, or completeness of any data herein. The user of this map should not rely on the data provided herein for any purpose. The City expressly disclaims any implied warranties of merchantability and fitness for a particular purpose. The City shall assume no liability for any decision made or action taken or not taken by the user of the map in reliance upon any information or data furnished hereunder. To be sure of the accuracy, please check with City and/or associated collection.