

MEMBERS OF THE AMERICAN INSTITUTE OF ARCHITECTS
COPYRIGHT 2015 ALL RIGHTS RESERVED
PRINTED OR ELECTRONIC DRAWINGS AND DOCUMENTATION MAY NOT BE REPRODUCED IN ANY FORM WITHOUT PERMISSION FROM LS3P ASSOCIATES LTD.

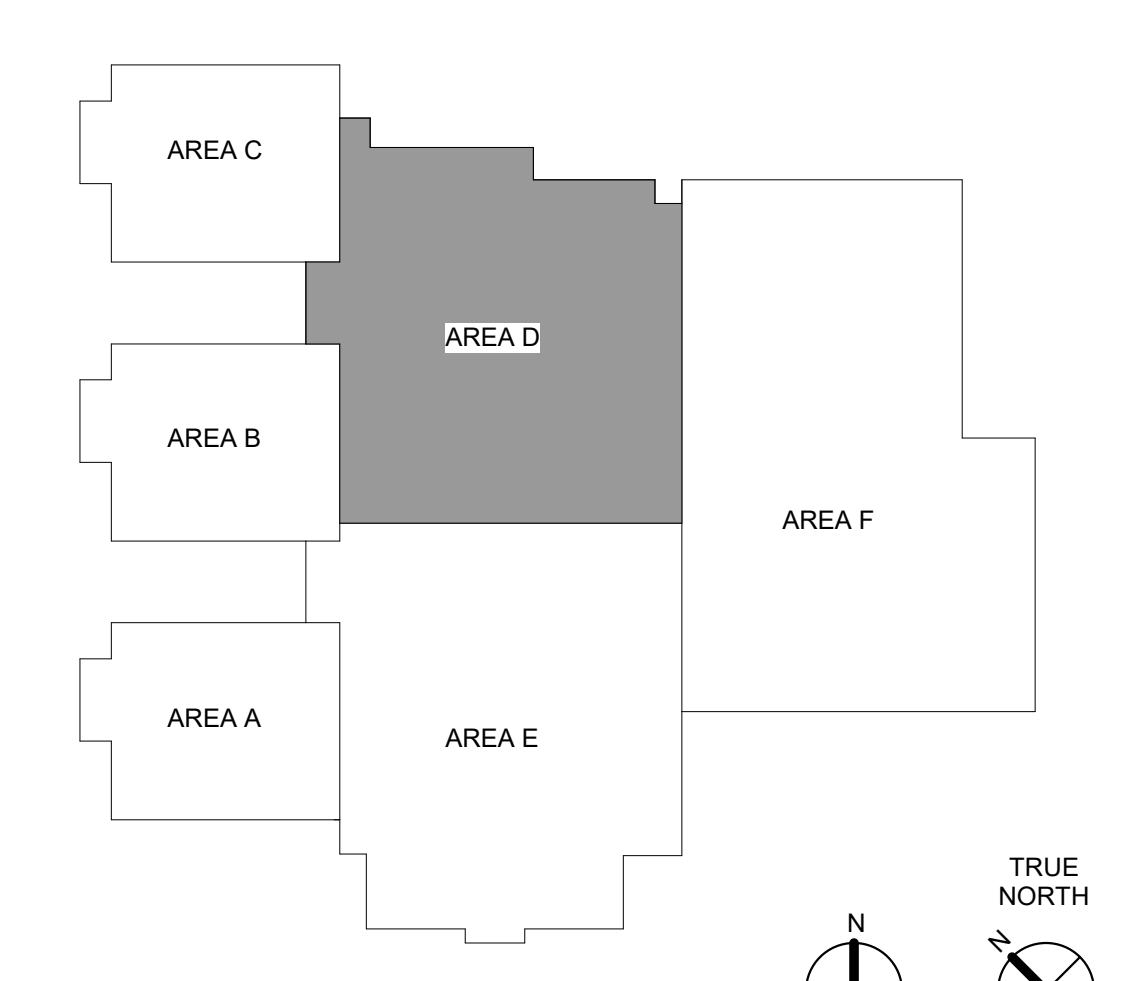
REVISIONS:

No.	Description	Date
1	ASI #2 - ACCESS CONTROL COORDINATION	February 21, 2020

PARTITION LEGEND

- 1 HR. RATED FIRE BARRIER
- 2 HR. RATED FIRE BARRIER
- 3 HR. RATED FIRE WALL
- SMOKE PARTITION

KEY PLAN

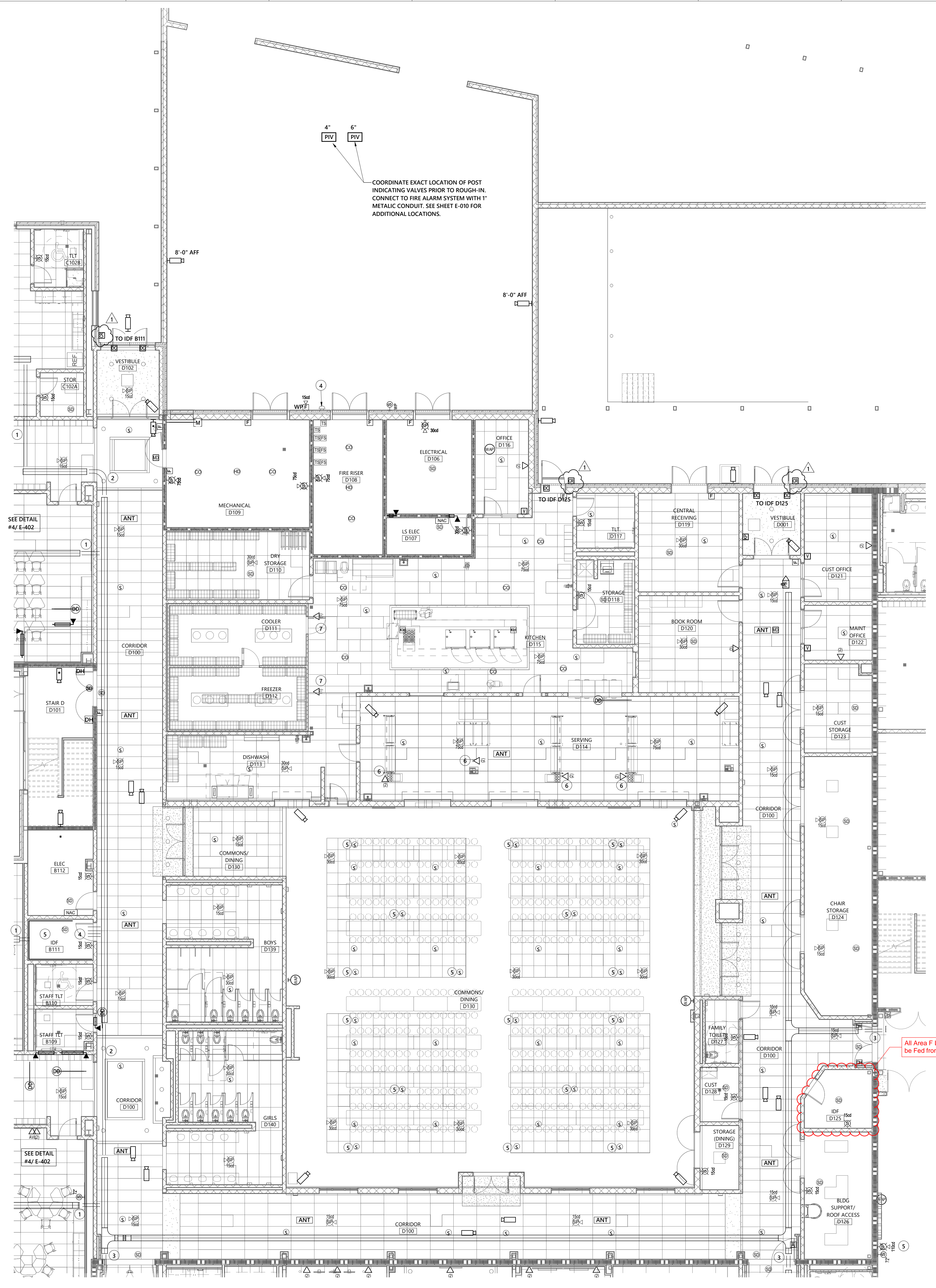


PROJECT: 9201-178520
DATE: JUNE 19, 2019
DRAWN BY: JR
CHECKED BY: MM

FIRST FLOOR SPECIAL SYSTEMS PLAN AREA D

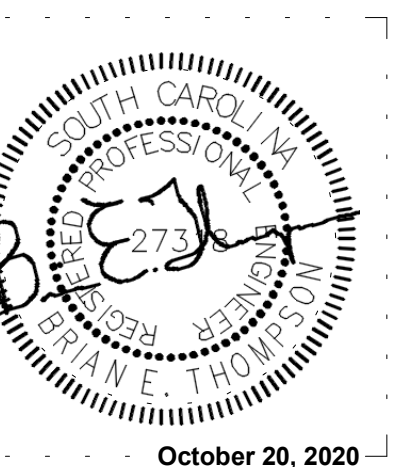
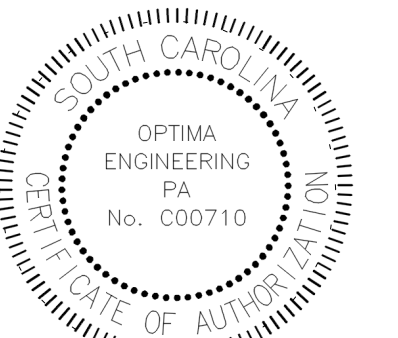
E-301D

- KEYED FLOOR PLAN NOTES:**
- TYPICAL - PROVIDE TWO (2) - 4" CONDUIT SLEEVES BETWEEN CLASSROOM AS AN EXTENSION OF THE CABLE TRAY SYSTEM.
 - TYPICAL - PROVIDE TWO (2) - 4" CONDUIT SLEEVES OVER GYP BOARD CEILINGS (NON-ACCESSIBLE) AS AN EXTENSION OF THE CABLE TRAY SYSTEM.
 - PROVIDE TWO (2) - 4" FIRE/ SMOKE RATED CONDUIT SLEEVE SYSTEMS IN RATED WALL.
 - SPRINKLER SYSTEM ELECTRIC ALARM BELL 24 VOLT BELL PROVIDED BY SPRINKLER CONTRACTOR AND INSTALLED AND WIRED BY THE ELECTRICAL CONTRACTOR. POWER IS DERIVED FROM THE FIRE ALARM SYSTEM. VERIFY EXACT LOCATION AND WIRING REQUIREMENTS WITH THE SPRINKLER CONTRACTOR PRIOR TO ROUGH-IN.
 - PROVISIONS FOR AV SPEAKERS. AV SPEAKERS PROVIDED BY AV INSTALLER. ELECTRICAL CONTRACTOR TO PROVIDE A 4" SQUARE BACK BOX ABOVE THE SPEAKER LOCATION. COORDINATE EXACT LOCATIONS WITH AV INSTALLER PRIOR TO ROUGH-IN.
 - DATA OUTLETS TO BE INSTALLED ON COMBINATION POWER/ DATA POLE.
 - DATA OUTLET FOR TEMPERATURE MONITORING. COORDINATE EXACT HEIGHT PRIOR TO ROUGH-IN WITH KITCHEN MONITOR PROVIDER.



1 FIRST FLOOR SYSTEMS PLAN AREA D
1/8" = 1'-0"

BIM 360/Fort Mill Middle School #6/MEP - F1 Mill MS #6_2019.rvt
 2/21/2020 2:37:58 PM



MEMBERS OF THE AMERICAN INSTITUTE OF ARCHITECTS

COPYRIGHT 2015 ALL RIGHTS RESERVED
PRINTED OR ELECTRONIC DRAWINGS AND DOCUMENTATION MAY NOT BE REPRODUCED IN ANY FORM WITHOUT WRITTEN PERMISSION FROM LS3P ASSOCIATES LTD.

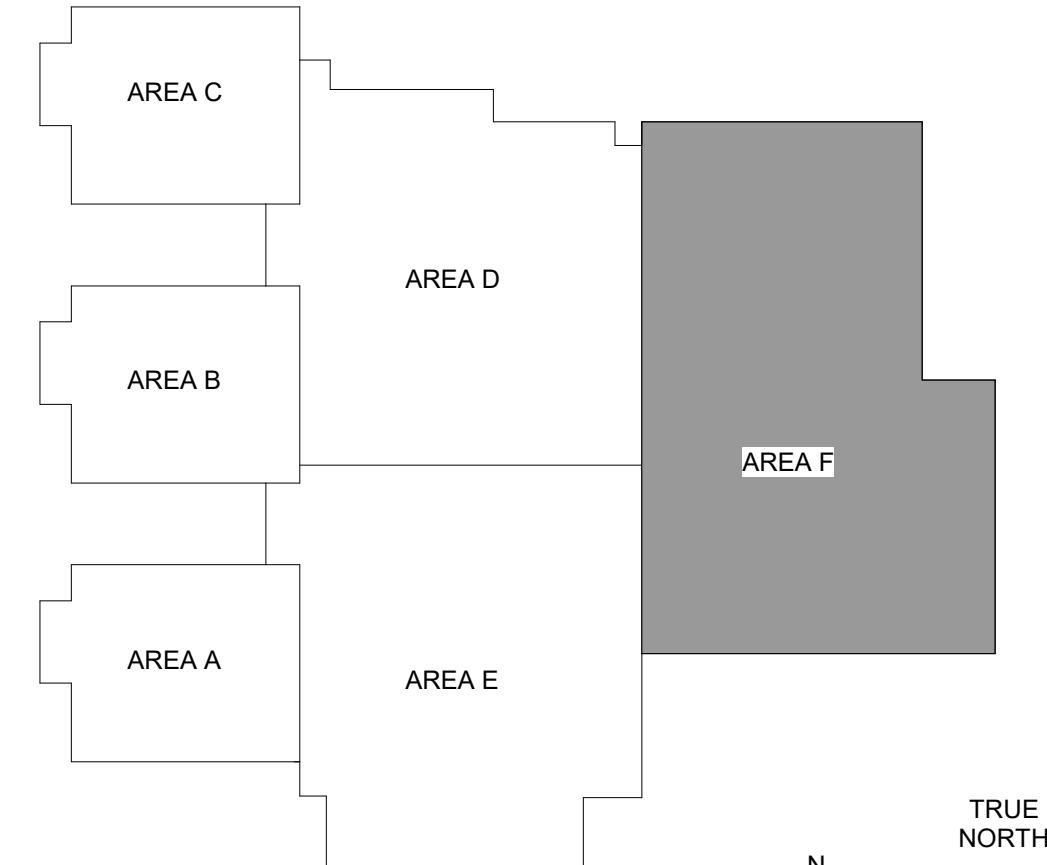
REVISIONS:

No.	Description	Date
1	ASI #2 - ACCESS CONTROL COORDINATION	February 21, 2020
2	ASI #8 ACCESS CONTROLS AND FIRE ALARM	August 13, 2020
3	AV COORDINATION/ ASI #12	September 14, 2020
4	PR #10 Admin Restroom	October 20, 2020

PARTITION LEGEND

- 1 HR. RATED FIRE BARRIER
- 2 HR. RATED FIRE BARRIER
- 3 HR. RATED FIRE WALL
- SMOKE PARTITION

KEY PLAN



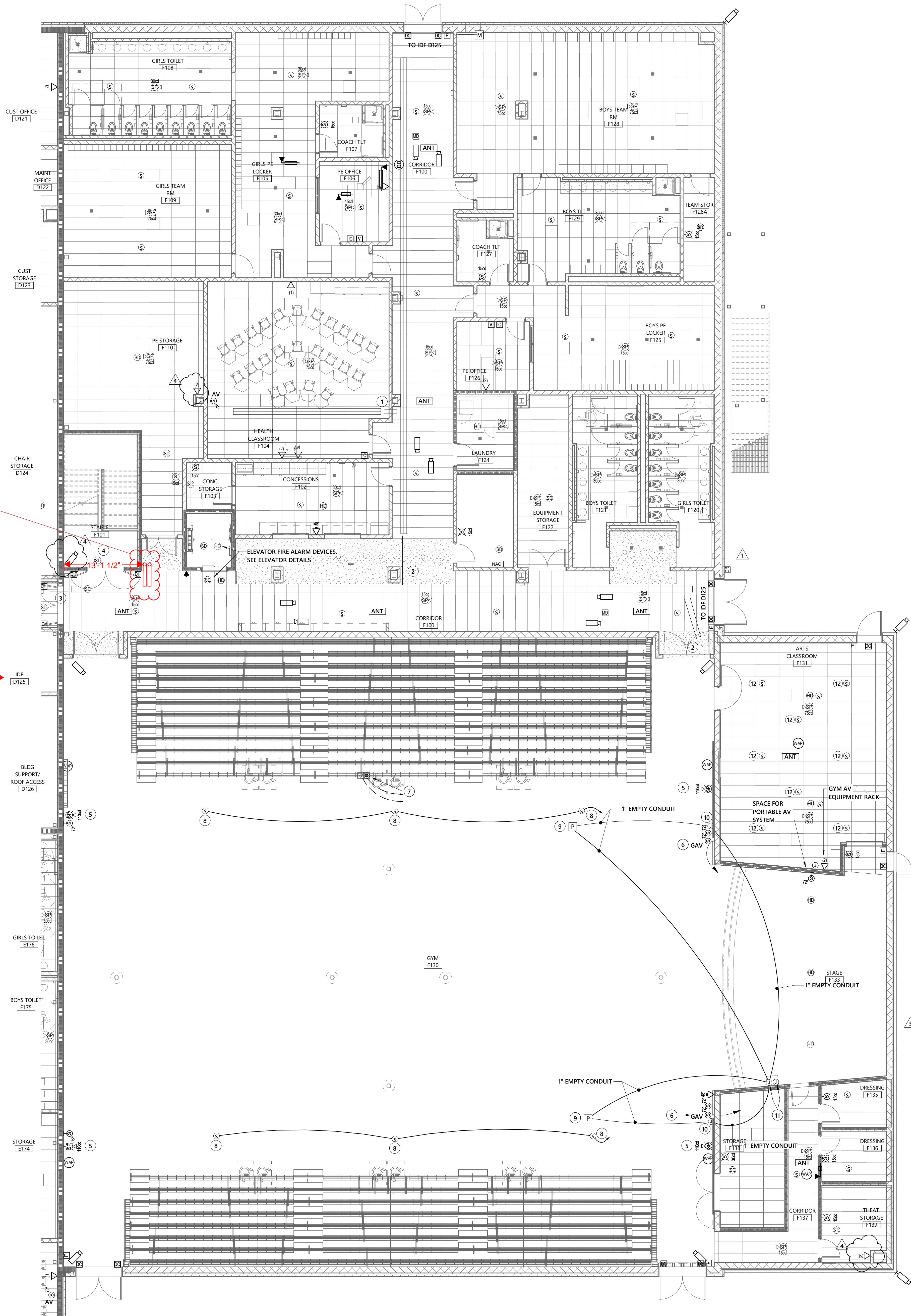
PROJECT: 9201-178520
DATE: JUNE 19, 2019
DRAWN BY: JR
CHECKED BY: MM

FIRST FLOOR SPECIAL SYSTEMS PLAN AREA F

E-301F

KEYED FLOOR PLAN NOTES:

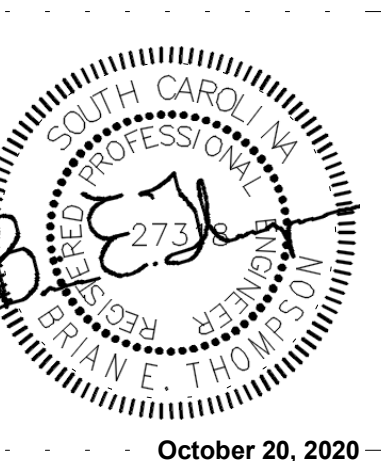
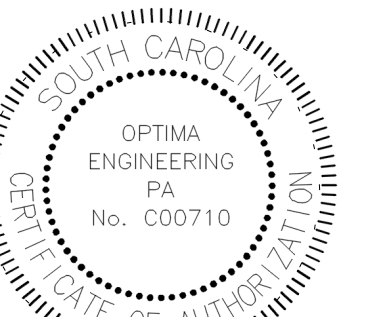
1. TYPICAL - PROVIDE TWO (2) - 4" CONDUIT SLEEVES BETWEEN CLASSROOM AS AN EXTENSION OF THE CABLE TRAY SYSTEM.
2. TYPICAL - PROVIDE TWO (2) - 4" CONDUIT SLEEVES OVER GYP BOARD CEILINGS (NON-ACCESSIBLE) AS AN EXTENSION OF THE CABLE TRAY SYSTEM.
3. PROVIDE TWO (2) - 4" FIRE/ SMOKE RATED CONDUIT SLEEVE SYSTEMS IN RATED WALL.
4. LOCATE SMOKE DETECTOR ON STAIR WALL WITHIN 5 FEET OF THE DOORS.
5. PROVIDE WIRE GUARDS FOR ALL FIRE ALARM DEVICES IN THE GYM.
6. GYM WALL MOUNTED SPEAKER PROVISIONS. PROVIDE A SINGLE GANG PLASTER BACK BOX WITH A SINGLE GANG PLASTER RING AND A 1" EMPTY CONDUIT TO THE AV RACK LOCATED ON THE STAGE. VERIFY THE EXACT LOCATION AND MOUNTING HEIGHT OF THE SPEAKER BACK BOX PRIOR TO ROUGH-IN.
7. FLUSH MOUNTED FLOOR BOX (6 GANG) AT SCORERS TABLE. VERIFY WITH THE GENERAL CONTRACTOR THE EXACT LOCATION AND STYLE OF FLOOR BOX TO BE COMPATIBLE WITH THE GYM FLOOR SYSTEM INSTALLED. PROVIDE A 1" CONDUIT FROM THE FLOOR BOX TO THE AV RACK LOCATION ON THE STAGE. PROVIDE A 1" CONDUIT FROM THE FLOOR BOX TO THE SCOREBOARD CONTROL LOCATIONS.
8. PROVISIONS FOR AV SPEAKERS. AV SPEAKERS PROVIDED BY AV INSTALLER. PROVIDE A 4" SQUARE BACK BOX ABOVE THE SPEAKER LOCATION. COORDINATE EXACT LOCATIONS WITH AV INSTALLER PRIOR TO ROUGH-IN. FROM FIRST SPEAKER IN LINE, PROVIDE 1" EMPTY CONDUIT TO AV BOX ON STAGE.
9. PROJECTOR LOCATION. PROVIDE SINGLE GANG BACK BOX AT PROJECTOR AND 1" EMPTY CONDUITS TO SCREEN AND AV BACK BOX ON STAGE. VERIFY EXACT ROUTING AND TERMINATION LOCATIONS WITH AV INSTALLER PRIOR TO ROUGH-IN.
10. SCREEN LOCATION. PROVIDE FLUSH MOUNTED SINGLE GANG JUNCTION BOX WITH 1" EMPTY CONDUIT BETWEEN SCREEN AND AV BACK BOX ON STAGE. VERIFY EXACT ROUTING AND TERMINATION LOCATIONS WITH AV INSTALLER PRIOR TO ROUGH-IN.
11. AV BOX FOR POWER AND CABLES. PROVIDE 8" SQUARE X 4" DEEP FLUSH MOUNTED BOX WITH DUPLEX RECEPTACLE AND SPACE FOR AV CABLE ENTRY. LOCATE BOTTOM AT 40" AFF. IN ADDITION TO OTHER CONDUITS SHOWN TO THE AV CABINET STUB A SPARE 1" CONDUIT TO ABOVE THE ASSOCIATED ACCESSIBLE CEILING SPACE IN THE ROOM. VERIFY THE EXACT BACK BOX SIZE, FACE PLATE REQUIREMENTS AND LOCATION WITH THE AV INSTALLER PRIOR TO ROUGH-IN. PROVIDE A 4" SQUARE BACK BOX AT 96" AFF ABOVE THE AV CABINET FOR THE FIRE ALARM VOICE DROP OUT RELAY. DROP OUT RELAY SHALL OPEN THE SPEAKER SYSTEM CIRCUIT IN THE EVENT OF A FIRE ALARM VOICE NOTIFICATION. FIRE ALARM DROP OUT RELAY TO BE CONNECTED TO AND PROVIDED AS A PART OF THE FIRE ALARM SYSTEM. PROVIDE AN 3/4" CONDUIT AND WIRING FROM THE FIRE ALARM RELAY BACK BOX DOWN TO THE AV CABINET. CONNECT TO THE RDL-MODEL ST.SRSL AUDIO RELAY TO CONTROL THE SPEAKERS. AUDIO RELAY IS PROVIDED BY THE AV CONTRACTOR. COORDINATE THE EXACT WIRING FROM THE DROP OUT RELAY CONTACTS TO THE AV CABINET WITH THE AV INSTALLER PRIOR TO ROUGH-IN. COORDINATE BETWEEN THE FIRE ALARM SYSTEM AND THE AV SYSTEM INSTALLER. VERIFY EXACT LOCATION OF AV EQUIPMENT PRIOR TO ROUGH-IN.
12. PROVISIONS FOR AV SPEAKERS. AV SPEAKERS PROVIDED BY AV INSTALLER. ELECTRICAL CONTRACTOR SHALL PROVIDE A 4" SQUARE BACK BOX ABOVE THE SPEAKER LOCATION. COORDINATE EXACT LOCATIONS WITH AV INSTALLER PRIOR TO ROUGH-IN.



(2) 4" Conduit for raceway up to Level 2 for Fiber & Future Use

ALL AREA F LEVEL 1 DATA TO BE FED FROM IDF D125.

1 FIRST FLOOR SYSTEMS PLAN AREA F
1/8" = 1'-0"



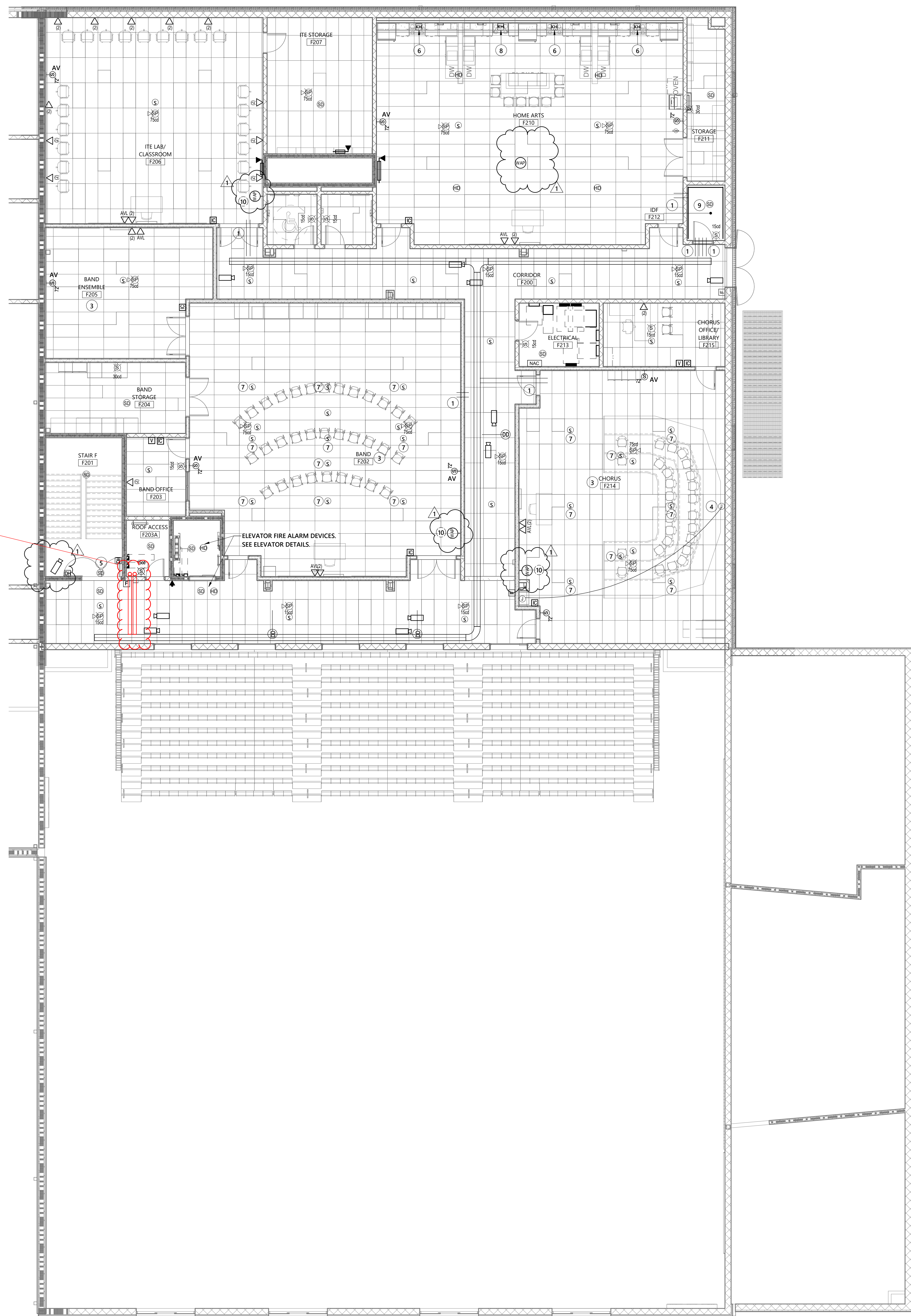
MEMBERS OF THE AMERICAN INSTITUTE OF ARCHITECTS
COPYRIGHT 2015 ALL RIGHTS RESERVED
PRINTED OR ELECTRONIC DRAWINGS AND DOCUMENTATION MAY NOT BE REPRODUCED IN ANY FORM WITHOUT WRITTEN PERMISSION FROM LS3P ASSOCIATES LTD.

REVISIONS:

No.	Description	Date
1	PR #10 Admin Restroom	October 20, 2020

- KEYED FLOOR PLAN NOTES:**
- TYPICAL - PROVIDE TWO (2) - 4" CONDUIT SLEEVES BETWEEN CLASSROOM AND CABLE TRAY AS AN EXTENSION OF THE CABLE TRAY SYSTEM.
 - TYPICAL - PROVIDE TWO (2) - 4" CONDUIT SLEEVES OVER GYP BOARD CEILING (NON-ACCESSIBLE) AS AN EXTENSION OF THE CABLE TRAY SYSTEM.
 - THE WALL SYSTEM IN THIS ROOM HAS EXTRA DEPTH. PROVIDE THE REQUIRED EXTRA DEEP JUNCTION BOXES OR EXTRA DEEP PLASTER RINGS. COORDINATE WITH THE GENERAL CONTRACTOR PRIOR TO ROUGH-IN. FACES OF BOXES OR PLASTER RINGS SHALL BE FLUSH WITH THE FINAL LAYER OF WALL.
 - PROVIDE A FLUSH TWO GANG BACK BOX AT 18" AFF WITH A TWO GANG BLANK COVER PLATE FOR FUTURE MICROPHONE CONNECTION. PROVIDE A 1" EMPTY CONDUIT BETWEEN THIS JUNCTION BOX AND THE AV CABINET ACROSS THE ROOM. VERIFY BACK BOX SIZE, CONDUIT SIZE AND LOCATION WITH AV INSTALLER PRIOR TO ROUGH-IN.
 - LOCATE SMOKE DETECTOR ON STAIR WALL WITHIN 5 FEET OF THE DOORS.
 - PROVIDE FIRE ALARM CONNECTION TO FIRE SUPPRESSION SYSTEM IN THIS RANGE HOOD. ACTIVATION OF FIRE SUPPRESSION SYSTEM SHALL SHUT DOWN THE POWER SOURCE TO THE RANGE RECEPTACLE. COORDINATE ALL REQUIRED WIRING AND INSTALLATION OF DEVICES WITH THE MECHANICAL CONTRACTOR PRIOR TO ROUGH-IN. SEE RANGE HOOD SCHEDULE ON SHEET M-003.
 - PROVISIONS FOR AV SPEAKERS. AV SPEAKERS PROVIDED BY AV INSTALLER. ELECTRICAL CONTRACTOR SHALL PROVIDE A 4" SQUARE BACK BOX ABOVE THE SPEAKER LOCATION. COORDINATE EXACT LOCATIONS WITH AV INSTALLER PRIOR TO ROUGH-IN.
 - PROVIDE FIRE ALARM CONNECTION TO COMMERCIAL FIRE SUPPRESSION SYSTEM IN TEACHERS RANGE HOOD. ACTIVATION OF FIRE SUPPRESSION SYSTEM SHALL SHUT DOWN THE POWER SOURCE TO THE RANGE RECEPTACLE. RANGE HOOD US SUPPLIED WITH LIGHTS, MASTER DISCONNECT SWITCH, PILOT LIGHTS, CONTROL SWITCHES, STARTER FOR FAN, FIRE CONTROL RELAY. COORDINATE ALL REQUIRED WIRING AND INSTALLATION OF DEVICES WITH THE MECHANICAL CONTRACTOR PRIOR TO ROUGH-IN. SEE RANGE HOOD SCHEDULE ON SHEET M-003.
 - PROVIDE PLYWOOD BACKBOARD AROUND ROOM-SEE DETAIL ON SHEET E503.
 - WALL MOUNTED WIRELESS ACCESS POINT. LOCATE WITH BOTTOM OF DEVICE AT 88" AFF. COORDINATE EXACT LOCATION ON WALL WITH THE GENERAL CONTRACTOR, FMMS I.T. DEPARTMENT AND WALL ELEMENTS PRIOR TO ROUGH-IN.

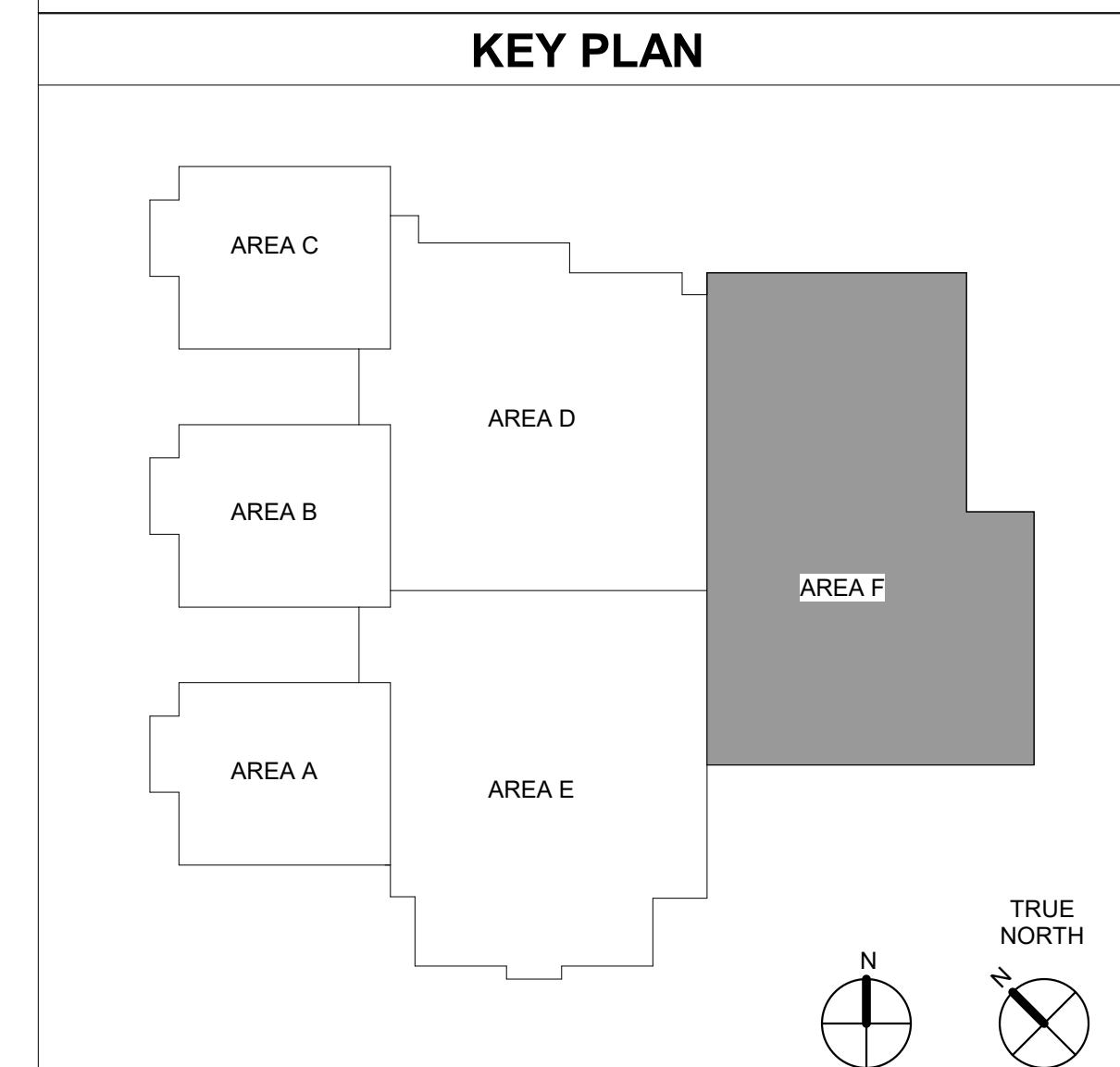
(2) 4" Conduit fed from Level 1 for Fiber & Future Use.



1 SECOND FLOOR SYSTEMS PLAN AREA F
1/8" = 1'-0"

PARTITION LEGEND

	1 HR. RATED FIRE BARRIER
	2 HR. RATED FIRE BARRIER
	3 HR. RATED FIRE WALL
	SMOKE PARTITION



PROJECT: 9201-178520
DATE: JUNE 19, 2019
DRAWN BY: JR
CHECKED BY: MM

SECOND FLOOR SPECIAL SYSTEMS PLAN AREA F

E-302F