

MYRTLE BEACH HIGH SCHOOL  
NORTHWEST WING BRICK VENEER CRACKING

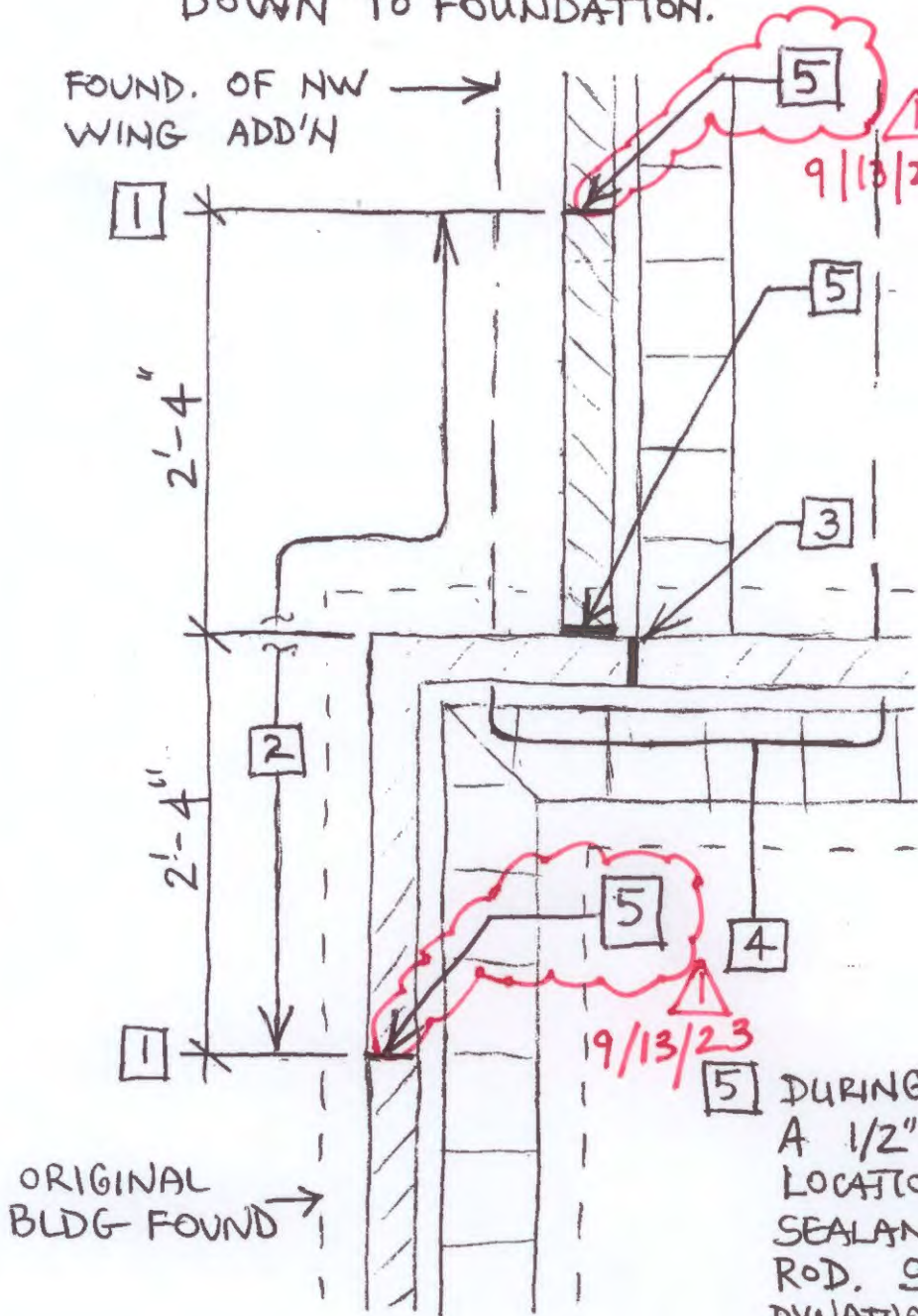
1 CUT BRICK VENEER AT CLOSEST JOINT TO DIMENSION SHOWN. FROM TOP OF PARAPET DOWN TO FOUNDATION.

2 REMOVE ALL BRICK VENEER FROM TOP OF WALL DOWN TO TOP OF FOUNDATION.

3 CUT BRICK VENEER FLUSH WITH FACE OF CMU WALL FROM TOP OF PARAPET DOWN TO TOP OF FOUNDATION. CUT JOINT PLUMB AND CLEAN TO ALLOW FOR FULL-HEIGHT 1/2" WIDE JOINT DURING RECONSTRUCTION.

4 REMOVE ADDITIONAL BRICK AT FOUNDATION LEVEL ONLY TO DISSOCIATE ADDITION FOOTING FROM ORIGINAL BRICK.

5 DURING RECONSTRUCTION, CREATE A 1/2" CONTROL JOINT AT THE LOCATION INDICATED. INSTALL SEALANT JOINT WITH BACKER ROD. SEALANT TO BE PECORA DYNATROL I-XL OR EQUAL.



SUPPLEMENTAL DETAIL 4A

BRICK VENEER REMOVAL, STRUCTURAL DETACHMENT, AND CONTROL JOINT LOCATIONS