

MYRTLE BEACH HIGH SCHOOL BRICK VENEER
CRACK REPAIR AT NORTH WEST WING ADDITION

9/13/23

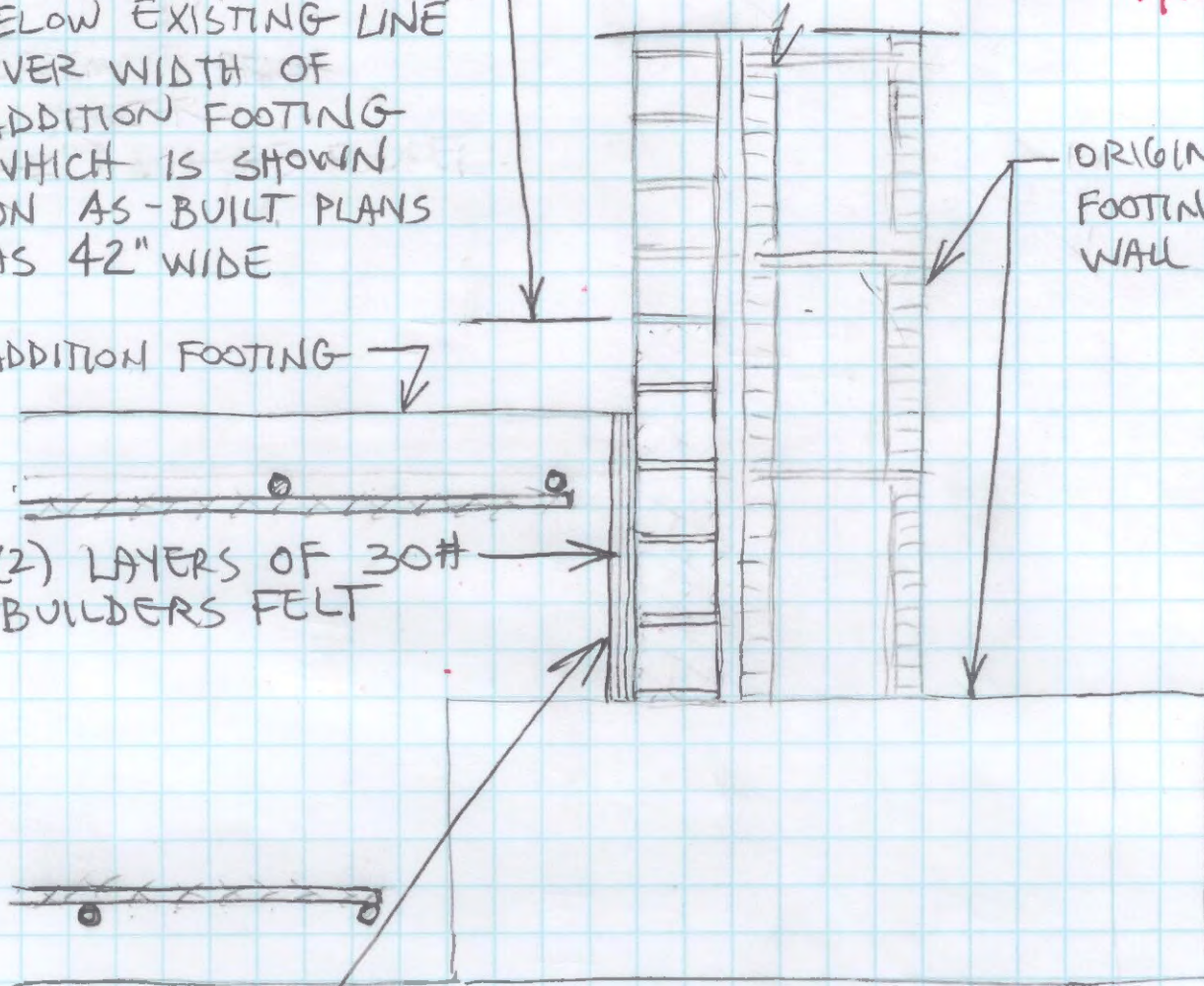
9/13/23

REMOVE BRICK VENEER
BELOW EXISTING LINE
OVER WIDTH OF
ADDITION FOOTING
WHICH IS SHOWN
ON AS-BUILT PLANS
AS 42" WIDE

ADDITION FOOTING

(2) LAYERS OF 30#
BUILDERS FELT

ORIGINAL BLDG
FOOTING AND
WALL ASSEMBLY



FOUNDATION LEVEL
CLARIFICATION FOR
SUPPLEMENTAL
DETAIL 4A

AFTER REMOVAL OF BRICK VENEER,
AND PRIOR TO REPLACEMENT,
GRIND END OF "ADDITION
FOOTING" AS REQUIRED TO
INSTALL (2) LAYERS OF 30#
BUILDERS FELT TO SERVE AS
A BOND BREAKER BETWEEN
THE ADDITION FOOTING AND
THE BRICK VENEER OF THE
ORIGINAL BUILDING.