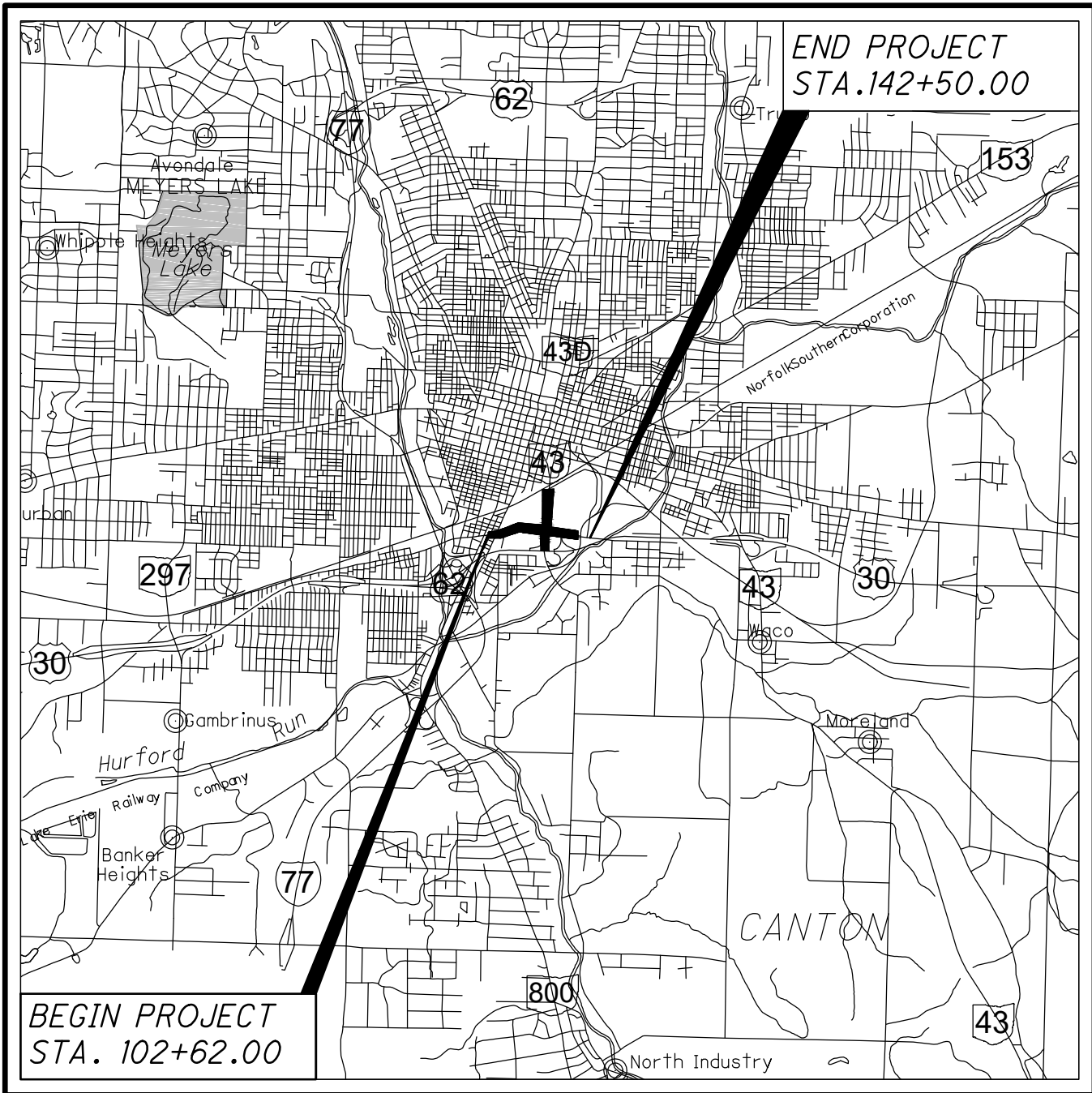
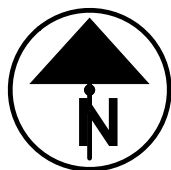


C:\pwworking\aecom_ds20_na_2019\brittney.crandall@aecom.com\dms20667\17790_GT001.dwg 10-May-23 4:03 PM



LOCATION MAP

LATITUDE: N40°47'22" LONGITUDE: W81°22'36"



PORTION TO BE IMPROVED	
INTERSTATE HIGHWAY	
FEDERAL ROUTES	
STATE ROUTES	
COUNTY & TOWNSHIP ROADS	
OTHER ROADS	

DESIGN DESIGNATION

CURRENT ADT (2023)	12,830
DESIGN YEAR ADT (2043)	13,320
DESIGN HOURLY VOLUME (2043)	1,332
DIRECTIONAL DISTRIBUTION	0.70
TRUCKS (24 HOUR B&C)	10%
DESIGN SPEED	35 MPH
LEGAL SPEED	35 MPH
DESIGN FUNCTIONAL CLASSIFICATION:	
05 MAJOR COLLECTOR ROAD (URBAN)	
NHS PROJECT	NO

DESIGN EXCEPTIONS

NONE

UNDERGROUND UTILITIES

Contact Two Working Days
Before You Dig

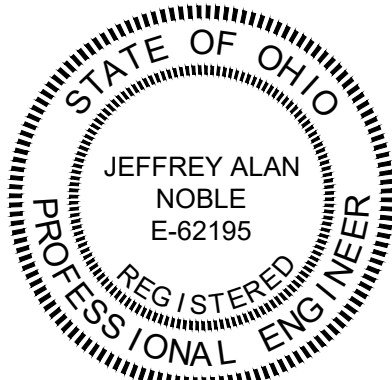

Before You Dig

OHIO811, 8-1-1, or 1-800-362-2764
(Non-members must be called directly)

PLAN PREPARED BY:
AECOM
AKRON CINCINNATI CLEVELAND COLUMBUS
564 WHITE POND DRIVE AKRON, OHIO 44320-1100
(330) 836-9111

CITY OF CANTON
ENGINEERING DEPARTMENT
**STA - 11TH STREET SE
IMPROVEMENTS**
CITY OF CANTON
STARK COUNTY

TITLE SHEET	1
SCHEMATIC PLAN	2
CONTROL POINTS AND CENTERLINE DATA	3
ROUNDAABOUT GEOMETRIC DATA	4-5
TYPICAL SECTIONS	6-18
GENERAL NOTES	19-23C
PLAN VIEW LEGEND	24
MAINTENANCE OF TRAFFIC	25A-33
GENERAL SUMMARY	34-37, 37A
SUBSUMMARIES	38-45
PROJECT SITE PLAN	46
PLAN AND PROFILE - 11TH STREET SE	47-64A
CROSS SECTIONS - 11TH STREET SE	65-104
PLAN AND PROFILE - MARKET AVENUE S	105-108
CROSS SECTIONS - MARKET AVENUE S	109-127
PLAN AND PROFILE - CHERRY AVENUE SE	128A-131
CROSS SECTIONS - CHERRY AVENUE SE	132-149
HOUSEL AVENUE SE PROFILE	150
ROUNDAABOUT PROFILES	151
ROUNDAABOUT DETAILS	152
SPLITTER ISLAND DETAILS	153-154
INTERSECTION DETAILS	155-157
DRIVE DETAILS	158
DRIVE PROFILES	159-167
DRAINAGE PROFILES	168-170
DRAINAGE DETAILS	170A-170D
WATER WORK	171-186
MISCELLANEOUS DETAILS	187-194B
NOT USED	195-197
TRAFFIC CONTROL	198-220
SIGNAL PLANS	221-242
LIGHTING AND LANDSCAPING	243-268
RIGHT OF WAY	269-302

ENGINEERS SEAL	CITY OF CANTON		ODOT				ODOT	
	STANDARD CONSTRUCTION DRAWINGS		STANDARD CONSTRUCTION DRAWINGS				SUPPLEMENTAL SPECIFICATIONS	
	CE-1	CURRENT EDITION	4-2A	7/16/21	MT-105.10	1/17/20	800	4/15/22
	CE-10	CURRENT EDITION					832	10/19/18
	CE-11	CURRENT EDITION	DM-1.2	7/16/21	TC-41.20	10/18/13	895	4/18/14
	CE-12	CURRENT EDITION			TC-41.30	10/18/13	995	7/17/15
	CE-13	CURRENT EDITION	BP-3.1	1/17/20	TC-41.50	10/18/13		
	CE-18 CE-19	CURRENT EDITION			TC-42.20	10/18/13		
	CE-20CE-21	CURRENT EDITION	HL-10.11	1/15/21	TC-52.10	10/18/13		
	CE-27	CURRENT EDITION	HL-10.12	1/20/17	TC-52.20	1/15/21		
	CE-28	CURRENT EDITION	HL-30.11	1/15/21	TC-71.10	7/16/21		
	CE-30	CURRENT EDITION	HL-30.22	1/15/21	TC-81.22	7/16/21		
	CE-31	CURRENT EDITION	HL-30.31	4/17/20	TC-82.10	7/19/19	SS01-00	5/12/20
	CE-33	CURRENT EDITION	HL-60.11	7/21/17	TC-83.10	1/17/20	SS03-00	7/18/08
	CE-34	CURRENT EDITION	HL-60.12	7/16/21	TC-85.10	4/17/20	SS04-01	4/01
	CE-40	CURRENT EDITION						
	CE-41	CURRENT EDITION	MT-97.10	4/19/19				
	CE-42	CURRENT EDITION	MT-99.20	4/19/19				
	CE-43	CURRENT EDITION	MT-101.60	1/17/20				

SIGNED: *Jeffrey A. Noble*
DATE: 11/11/2022

PROJECT DESCRIPTION

IMPROVEMENTS CONSIST OF A ROUNDAABOUT AT THE INTERSECTION OF 11TH STREET SE/MARKET AVENUE S, STREETSCAPING WITH TREES, UPGRADED PEDESTRIAN LIGHTING, UPGRADED SIGNALS, ADA IMPROVEMENTS AT CROSSWALKS, BRICK INTERSECTION, A SHARED-USE PATH AND BIKE LANES THAT ALIGN WITH THE CITY'S MASTER BIKE ROUTES. 11TH STREET SE WILL ALSO BE REALIGNED TO ELIMINATE THE SUBSTANDARD DEFLECTION IN THE EXISTING ALIGNMENT.

EARTH DISTURBED AREAS

PROJECT EARTH DISTURBED AREA:	5.97 ACRES
ESTIMATED CONTRACTOR EARTH DISTURBED AREA:	0.67 ACRES
NOTICE OF INTENT EARTH DISTURBED AREA:	6.64 ACRES

2019 SPECIFICATIONS

THE STANDARD SPECIFICATIONS OF THE STATE OF OHIO, DEPARTMENT OF TRANSPORTATION, INCLUDING SUPPLEMENTAL SPECIFICATIONS LISTED IN THE PLANS AND CHANGES LISTED IN THE PROPOSAL SHALL GOVERN THIS IMPROVEMENT.

SANITARY SEWER 'PERMIT TO INSTALL' APPROVED BY THE OHIO EPA PURSUANT TO LETTER DATED _____.

I HEREBY APPROVE THESE PLANS AND DECLARE THAT THE MAKING OF THIS IMPROVEMENT WILL NOT REQUIRE THE CLOSING TO TRAFFIC OF THE HIGHWAY EXCEPT AS NOTED ON SHEETS 25-32, AND THAT PROVISIONS FOR THE MAINTENANCE AND SAFETY OF TRAFFIC WILL BE AS SET FORTH ON THE PLANS AND ESTIMATES.

APPROVED _____
DATE _____ DISTRICT DEPUTY DIRECTOR

APPROVED _____
DATE _____ DIRECTOR, DEPARTMENT OF TRANSPORTATION

FEDERAL PROJECT NO.

E110 (520)

PID NO.

90465

GENERAL PROJECT NO.

G.P. 1144

RAILROAD INVOLVEMENT

WHEELING & LAKE ERIE

STA - 11TH STREET SE
IMPROVEMENTS (PID 90465)

1
302

○

ADDENDUM A 5/10/23

C:\pwworking\aecom_ds20_na_2019\britney.randall@aecom.com\dms20667\17790_GG001.dwg 10-May-23 8:10 PM

SHEET NUM.													PART.	ITEM	ITEM	GRAND	UNIT	DESCRIPTION	SEE SHEET NO.	CALCULATED JPK	CHECKED JES
40	41	42	45								OFFICE CALC			EXT	TOTAL						
																		DRAINAGE			
											6,629		605	14020	6,629	FT	6" BASE PIPE UNDERDRAINS WITH GEOTEXTILE FABRIC				
											540		611	00510	540	FT	6" CONDUIT, TYPE F FOR UNDERDRAIN OUTLETS				
24													611	00900	24	FT	6" CONDUIT, TYPE B, 707.45				
5	5												611	01800	10	FT	8" CONDUIT, TYPE B , 707.45				
180	9												611	04400	189	FT	12" CONDUIT, TYPE B, 706.02				
748	207	10											611	04400	965	FT	12" CONDUIT, TYPE B, 707.33				
105													611	05900	105	FT	15" CONDUIT, TYPE B, 706.02				
29	389	16											611	05900	434	FT	15" CONDUIT, TYPE B, 707.33				
33	101												611	07400	134	FT	18" CONDUIT, TYPE B, 706.02				
59													611	10400	59	FT	24" CONDUIT, TYPE B, 706.02				
16													611	22400	16	FT	54" CONDUIT, TYPE B, 706.02				
	1												611	98370	1	EACH	CATCH BASIN, NO. 6				
5	7	9											611	98631	21	EACH	CATCH BASIN ADJUSTED TO GRADE, AS PER PLAN	21			
		2											611	98870	2	EACH	INLET, NO. 2-A-12				
12	15	12											611	99655	39	EACH	MANHOLE ADJUSTED TO GRADE, AS PER PLAN	21			
26	17	2											611	99900	45	EACH	DRAINAGE STRUCTURE, MISC.: CITY OF CANTON CURB INLET CATCH BASIN	21			
4	2												611	99900	6	EACH	DRAINAGE STRUCTURE, MISC.: CITY OF CANTON MANHOLE	21			
LS													611	99920	LS		DRAINAGE STRUCTURE, MISC.: JUNCTION CHAMBER	170A			
	1												611	99582	1	EACH	MANHOLE, NO. 3 WITH 90" BASE I.D. AND 8" WEIR				
	1												611	99584	1	EACH	MANHOLE, NO. 3 WITH 96" BASE I.D. AND 9" WEIR				
	1												611	99621	1	EACH	MANHOLE, NO. 5, AS PER PLAN	170B			
	1												895	10020	1	EACH	MANUFACTURED WATER QUALITY STRUCTURE, TYPE 2				
	1												895	10030	1	EACH	MANUFACTURED WATER QUALITY STRUCTURE, TYPE 3				
											30,577		254	01000	30,577	SY	PAVEMENT				
											1,936		301	56000	1,936	CY	PAVEMENT PLANING, ASPHALT CONCRETE				
											4,362		304	20000	4,362	CY	ASPHALT CONCRETE BASE, PG64-22, (449)				
											4,780		305	10010	4,780	SY	AGGREGATE BASE				
											5,063		407	10000	5,063	GAL	6" CONCRETE BASE, CLASS QC 1P				
																	TACK COAT				
											59		407	20000	59	GAL	NON-TRACKING TACK COAT				
											879		424	13100	879	CY	FINE GRADED POLYMER ASPHALT CONCRETE, TYPE A, (449)				
											2,637		441	70300	2,637	CY	ASPHALT CONCRETE INTERMEDIATE COURSE, TYPE 2, (449)				
											18		441	70500	18	CY	ASPHALT CONCRETE SURFACE COURSE, TYPE 1, (449), (DRIVEWAYS)				
											10		441	70700	10	CY	ASPHALT CONCRETE INTERMEDIATE COURSE, TYPE 2, (449), (DRIVEWAYS)				
											359		452	14010	359	SY	10" NON-REINFORCED CONCRETE PAVEMENT, CLASS QC 1P				
											707		609	22001	707	FT	CURB, TYPE 3-B, AS PER PLAN	14			
											10,597		609	98000	10,597	FT	CURB, MISC.: CONCRETE CURB, CANTON TYPE 1	23			
											216		609	98000	216	FT	CURB, MISC.: CONCRETE CURB, CANTON TYPE 1 - 18" X 18"	14			
			9										611	00101	9	FT	4" CONDUIT, TYPE B, AS PER PLAN	23			
			66										611	97400	66	FT	CONDUIT, MISC.: 4" SANITARY LATERAL RECONNECTED, COMPLETE, AS PER PLAN	23			
			152										611	00901	152	FT	6" CONDUIT, TYPE B, AS PER PLAN	23			
			1,014										611	01801	1,014	FT	8" CONDUIT, TYPE B, AS PER PLAN	23			
			108										611	01801	108	FT	8" CONDUIT, TYPE B, AS PER PLAN, 748.02	23			
			1,223										611	04401	1,223	FT	12" CONDUIT, TYPE B, AS PER PLAN	23			
			10										611	07401	10	FT	18" CONDUIT, TYPE B, AS PER PLAN	23			
			71										611	08901	71	FT	21" CONDUIT, TYPE B, AS PER PLAN	23			
			2,571										611	13401	2,571	FT	30" CONDUIT, TYPE B, AS PER PLAN	23			
			6										611	99655	6	EACH	MANHOLE ADJUSTED TO GRADE, AS PER PLAN	23			
			33										611	99900	33	EACH	DRAINAGE STRUCTURE, MISC.: CITY OF CANTON MANHOLE, AS PER PLAN	23			
			1										611	99900	1	EACH	DRAINAGE STRUCTURE, MISC.: MANHOLE WITH OUTSIDE DROP CONNECTION, COMPLETE, AS PER PLAN	23			
			1										611	99900	1	EACH	DRAINAGE STRUCTURE, MISC.: SANITARY CLEANOUT				
			18										611	99900	18	EACH	DRAINAGE STRUCTURE, MISC.: SANITARY WYE	23			
			1										611	99900	1	EACH	DRAINAGE STRUCTURE, MISC.: 21" COUPLER, AS PER PLAN	45			
													SPECIAL	69021000	LS		SANITARY SEWER BYPASS PUMPING, AS PER PLAN	23			

C:\pwworking\aecom_ds20_na_2019\brittney.crandall@aecom.com\dms20667\17790_GG001.dwg 10-May-23 8:10 PM

SHEET NUM.													PART.	ITEM	ITEM	GRAND	UNIT	DESCRIPTION	SEE SHEET NO.	CALCULATED JPK	CHECKED JES
203	209	210	211	249	43							OFFICE CALC			EXT	TOTAL					
																		WATER WORK			
					328									638	00601	328	FT	6" WATER MAIN DUCTILE IRON PIPE ANSI CLASS 52, PUSH-ON JOINTS AND FITTINGS, AS PER PLAN	22		
					293									638	01201	293	FT	8" WATER MAIN DUCTILE IRON PIPE ANSI CLASS 52, PUSH-ON JOINTS AND FITTINGS, AS PER PLAN	22		
					19									638	01805	19	FT	10" WATER MAIN DUCTILE IRON PIPE ANSI CLASS 53, PUSH-ON JOINTS AND FITTINGS, AS PER PLAN	22		
					3,165									638	02405	3,165	FT	12" WATER MAIN DUCTILE IRON PIPE ANSI CLASS 53, PUSH-ON JOINTS AND FITTINGS, AS PER PLAN	22		
					3									638	07801	3	EACH	6" GATE VALVE AND VALVE BOX, AS PER PLAN	22		
					2									638	07901	2	EACH	8" GATE VALVE AND VALVE BOX, AS PER PLAN	22		
					1									638	08001	1	EACH	10" GATE VALVE AND VALVE BOX, AS PER PLAN	22		
					8									638	08101	8	EACH	12" GATE VALVE AND VALVE BOX, AS PER PLAN	22		
					7									638	10201	7	EACH	6" FIRE HYDRANT, AS PER PLAN	22		
					7									638	10480	7	EACH	FIRE HYDRANT REMOVED			
					10									638	10800	10	EACH	VALVE BOX ADJUSTED TO GRADE			
					115									SPECIAL	63820772	115	FT	1" HDPE WATER SERVICE LINE AND APPURTENANCES , CITY OF CANTON STANDARD, AS PER PLAN	22		
					73									SPECIAL	63820776	73	FT	1 1/2" HDPE WATER SERVICE LINE AND APPURTENANCES , CITY OF CANTON STANDARD, AS PER PLAN	22		
					46									SPECIAL	63820780	46	FT	2" HDPE WATER SERVICE LINE AND APPURTENANCES , CITY OF CANTON STANDARD, AS PER PLAN	22		
					1									SPECIAL	63820876	1	EACH	CUT AND PLUG EXISTING 4" WATER LINE	21		
					5									SPECIAL	63820878	5	EACH	CUT AND PLUG EXISTING 6" WATER LINE	21		
					3									SPECIAL	63820880	3	EACH	CUT AND PLUG EXISTING 8" WATER LINE	21		
					2									SPECIAL	63820882	2	EACH	CUT AND PLUG EXISTING 10" WATER LINE	21		
					2									SPECIAL	63820884	2	EACH	CUT AND PLUG EXISTING 12" WATER LINE	21		
					LS									638	98100	LS		WATER WORK, MISC.: CONNECTION FOR EX. 30" CONCRETE PIPE AND PR. 12" DIP	21		
																		LIGHTING			
					306									625	00450	306	EACH	CONNECTION, FUSED PULL APART			
					102									625	00460	102	EACH	CONNECTION, UNFUSED PULL APART			
					94									625	10481	94	EACH	LIGHT POLE, DECORATIVE, AS PER PLAN	243		
					94									625	14600	94	EACH	LIGHT POLE FOUNDATION, MISC.: 30" X 6' DEEP	243		
					46,852									625	22990	46,852	FT	NO. 6 AWG 600 VOLT DISTRIBUTION CABLE			
					12,600									625	23410	12,600	FT	NO. 12 AWG POLE AND BRACKET CABLE			
					8,829									625	25402	8,829	FT	CONDUIT, 2", 725.05			
					1,684									625	25403	1,684	FT	CONDUIT, 2", 725.05, AS PER PLAN	243		
					89									625	25902	89	FT	CONDUIT, JACKED OR DRILLED, 725.04 ,2"			
					8									625	26251	8	EACH	LUMINAIRE, CONVENTIONAL, AS PER PLAN	243		
					188									625	27551	188	EACH	LUMINAIRE, DECORATIVE, AS PER PLAN	243		
					9,590									625	29000	9,590	FT	TRENCH			
					39									625	31600	39	EACH	PULL BOX, MISC.: 725.06 (17" X 30")	243		
					94									625	32000	94	EACH	GROUND ROD			
					2									625	34001	2	EACH	POWER SERVICE, AS PER PLAN	243		
					9,590									625	36010	9,590	FT	UNDERGROUND WARNING/MARKING TAPE			
					LS									SPECIAL	62540000	LS		MAINTAIN EXISTING LIGHTING	243		
					22									625	75400	22	EACH	LIGHT POLE REMOVED			
					22									625	75500	22	EACH	LIGHT POLE FOUNDATION REMOVED			
					32									625	75506	32	EACH	LUMINAIRE REMOVED			
					1									625	75510	1	EACH	POWER SERVICE REMOVED			
					32									625	75800	32	EACH	DISCONNECT CIRCUIT			
					2									625	76000	2	EACH	ARC FLASH CALCULATIONS AND LABEL (CC)	243		
																		TRAFFIC CONTROL			
	220.7	117												630	02100	337.7	FT	GROUND MOUNTED SUPPORT, NO. 2 POST			
	329.8	184.1	15											630	03100	528.9	FT	GROUND MOUNTED SUPPORT, NO. 3 POST			
		14.3	26.1											630	08520	40.4	FT	STREET NAME SIGN SUPPORT, NO. 3 POST			
	8	3	1											630	08600	12	EACH	SIGN POST REFLECTOR			
6	9	25	7											630	79500	47	EACH	SIGN SUPPORT ASSEMBLY, POLE MOUNTED			
	308	271.1	45.8											630	80100	624.9	SF	SIGN, FLAT SHEET			
		2	4											630	80500	6	EACH	SIGN, DOUBLE FACED, STREET NAME			
53														630	84900	53	EACH	REMOVAL OF GROUND MOUNTED SIGN AND DISPOSAL			
3														630	85100	3	EACH	REMOVAL OF GROUND MOUNTED SIGN AND REERECTION			
33														630	86002	33	EACH	REMOVAL OF GROUND MOUNTED POST SUPPORT AND DISPOSAL			

GENERAL SUMMARY

STA - 11TH STREET SE
IMPROVEMENTS (PID 90465)

C:\pwworking\aecom_ds20_na_2019\brittney.crandall@aecom.com\dms20667\17790_GG001.dwg-10-May-23 8:12 PM

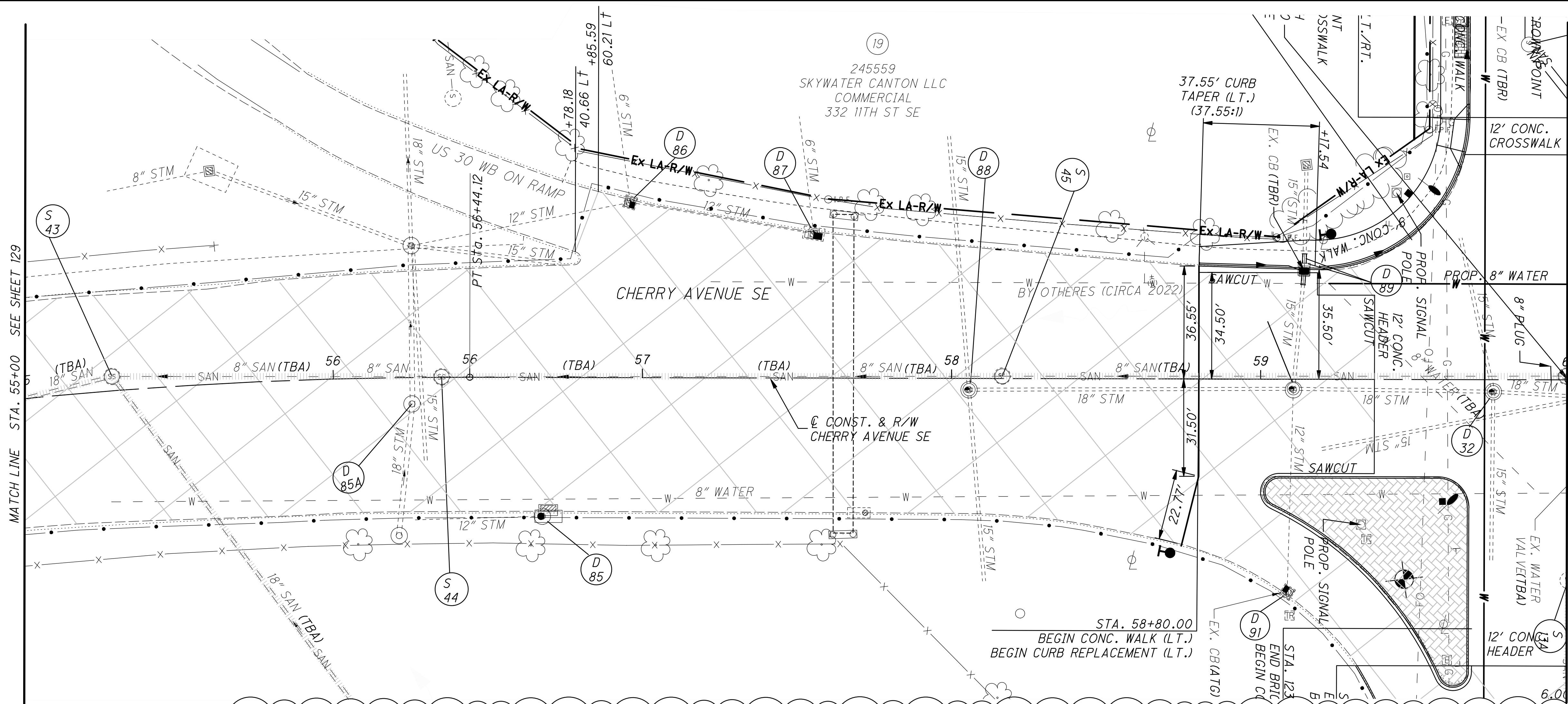
SHEET NUM.													PART.	ITEM	ITEM	GRAND	UNIT	DESCRIPTION	SEE SHEET NO.	CALCULATED JPK	CHECKED JES
229	234	242	217	218	219	220						OFFICE CALC		EXT	TOTAL						
														630	87400	3	EACH	REMOVAL OF OVERHEAD MOUNTED SIGN AND DISPOSAL			
														630	87500	22	EACH	REMOVAL OF POLE MOUNTED SIGN AND DISPOSAL			
														630	87520	4	EACH	REMOVAL OF POLE MOUNTED SIGN AND REERECTION			
														630	89704	1	EACH	REMOVAL OF OVERHEAD SIGN SUPPORT AND DISPOSAL, TYPE TC-16.21			
			0.34	0.01										644	00104	0.35	MILE	EDGE LINE, 6"			
				0.51	0.1	0.49								644	00200	1.1	MILE	LANE LINE, 4"			
			0.36	0.78	0.31	0.44								644	00300	1.89	MILE	CENTER LINE			
				2,710	220	667								644	00400	3,597	FT	CHANNELIZING LINE, 8"			
				147	232									644	00500	379	FT	STOP LINE			
				95	515	34								644	00620	644	FT	CROSSWALK LINE, 12"			
			124		46									644	00621	170	FT	CROSSWALK LINE, 12", AS PER PLAN	211		
			270		245	387								644	00700	902	FT	TRANSVERSE/DIAGONAL LINE			
					25									644	00900	25	SF	ISLAND MARKING			
					5	3								644	01000	8	EACH	RAILROAD SYMBOL MARKING			
			12	12	36	9								644	01300	69	EACH	LANE ARROW			
			141											644	01510	141	FT	DOTTED LINE, 6"			
					150									644	01514	150	FT	DOTTED LINE, 8"			
				137										644	01520	137	FT	DOTTED LINE, 12"			
				5		5								644	01630	10	EACH	BIKE LANE SYMBOL MARKING			
				1	3									644	19000	4	EACH	SHARED LANE MARKING			
				72										644	20800	72	FT	YIELD LINE			
TRAFFIC SIGNALS																					
55	23													625	25402	78	FT	CONDUIT, 2", 725.05			
92														625	25403	92	FT	CONDUIT, 2", 725.05, AS PER PLAN	222		
81	46	3,107												625	25502	3,234	FT	CONDUIT, 3", 725.05			
427	371	1,174												625	25503	1,972	FT	CONDUIT, 3", 725.05, AS PER PLAN	222		
427	371													625	25603	798	FT	CONDUIT, 4", 725.05, AS PER PLAN	222		
554	430	902												625	29000	1,886	FT	TRENCH			
6	3													625	31600	9	EACH	PULL BOX, MISC.: 725.06 (17" X 30")	222		
1	1	29												625	31600	31	EACH	PULL BOX, MISC.: 725.06 (36" X 36")	222		
6	4													625	32000	10	EACH	GROUND ROD			
554	430	902												625	36010	1,886	FT	UNDERGROUND WARNING/MARKING TAPE			
1	1													625	76000	2	EACH	ARC FLASH CALCULATIONS AND LABEL	221		
7	4													630	79101	11	EACH	SIGN HANGER ASSEMBLY, MAST ARM, AS PER PLAN	221		
41.5	23													630	80100	64.5	SF	SIGN, FLAT SHEET			
3	7													632	05007	10	EACH	VEHICULAR SIGNAL HEAD, (LED), 3-SECTION, 12" LENS, 1-WAY, POLYCARBONATE, AS PER PLAN	222		
7	2													632	05087	9	EACH	VEHICULAR SIGNAL HEAD, (LED), 5-SECTION, 12" LENS, 1-WAY, POLYCARBONATE, AS PER PLAN	222		
4	2													632	20731	6	EACH	PEDESTRIAN SIGNAL HEAD (LED), TYPE D2, COUNTDOWN, AS PER PLAN	222		
10	9													632	25000	19	EACH	COVERING OF VEHICULAR SIGNAL HEAD	221		
4	2													632	25010	6	EACH	COVERING OF PEDESTRIAN SIGNAL HEAD			
4	2													632	26001	6	EACH	PEDESTRIAN PUSHBUTTON, AS PER PLAN	222		
2,387	1,639													632	40700	4,026	FT	SIGNAL CABLE, 7 CONDUCTOR, NO. 14 AWG			
4	4													632	64011	8	EACH	SIGNAL SUPPORT FOUNDATION, AS PER PLAN	223		
2														632	64021	2	EACH	PEDESTAL FOUNDATION, AS PER PLAN	223		
296	76													632	68101	372	FT	POWER CABLE, 1 CONDUCTOR, NO. 6 AWG, AS PER PLAN	221		
1	1													632	70001	2	EACH	POWER SERVICE, AS PER PLAN	221		
	1													632	81700	1	EACH	COMBINATION SIGNAL SUPPORT, MISC.: NOSTALGIA SIGNAL SUPPORT, TYPE TC-81.22, DESIGN 2	223		
3	3													632	81700	6	EACH	COMBINATION SIGNAL SUPPORT, MISC.: NOSTALGIA SIGNAL SUPPORT, TYPE TC-81.22, DESIGN 12	223		
1														632	81700	1	EACH	COMBINATION SIGNAL SUPPORT, MISC.: NOSTALGIA SIGNAL SUPPORT, TYPE TC-81.22, DESIGN 14	223		
2														632	90010	2	EACH	PEDESTAL, MISC.: NOSTALGIA PEDESTAL 8'	223		
1	1													632	90101	2	EACH	REMOVAL OF TRAFFIC SIGNAL INSTALLATION, AS PER PLAN	221		
1	1													633	67100	2	EACH	CABINET FOUNDATION			
1	1													633	67200	2	EACH	CONTROLLER WORK PAD			
1	1													633	75001	2	EACH	UNINTERRUPTIBLE POWER SUPPLY (UPS), 1000 WATT, AS PER PLAN	222		
1	1													633	99000	2	EACH	CONTROLLER ITEM, MISC.: CONTROLLER UNIT, TYPE TS2/A2, WITH CABINET, TYPE TS1	224		

GENERAL SUMMARY

STA - 11TH STREET SE
IMPROVEMENTS (PID 90465)

37
302

ADDENDUM ^ 5/10/23

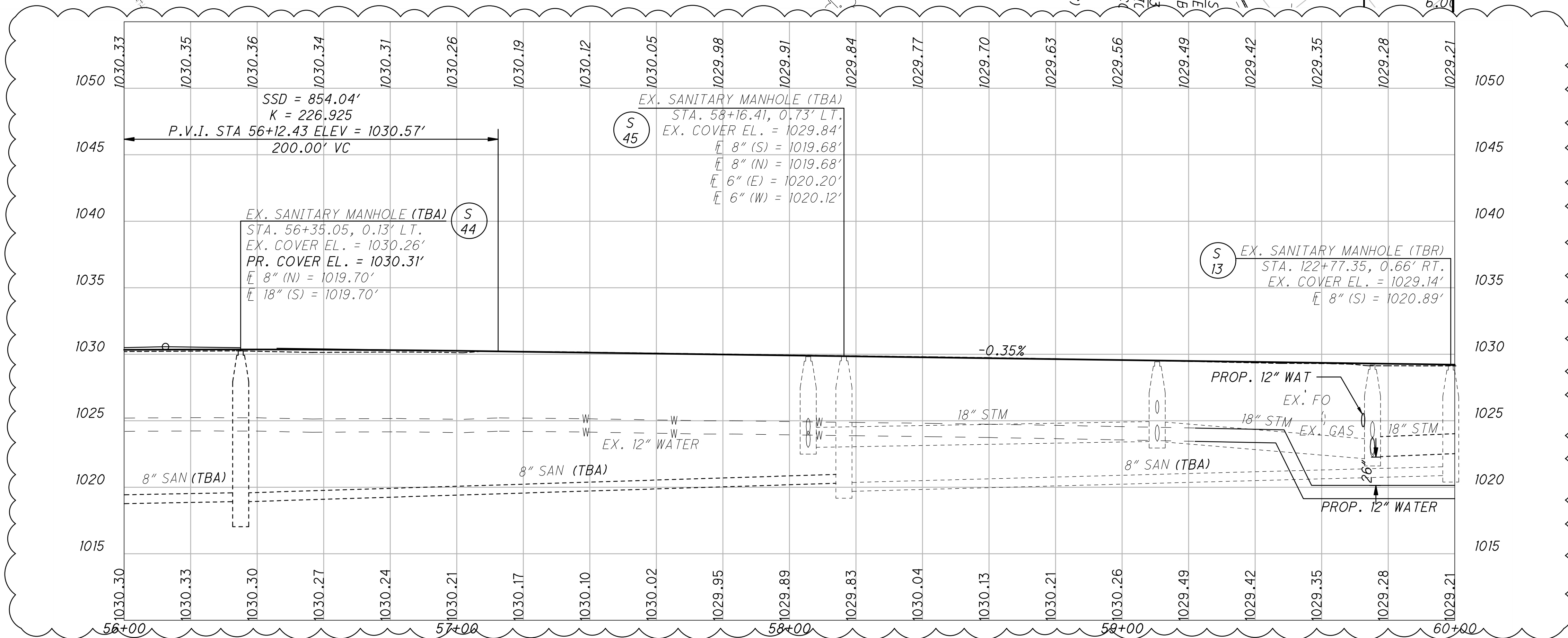


NOTES
PAVEMENT DIMENSIONS ARE MEASURED TO THE FACE OF CURB.

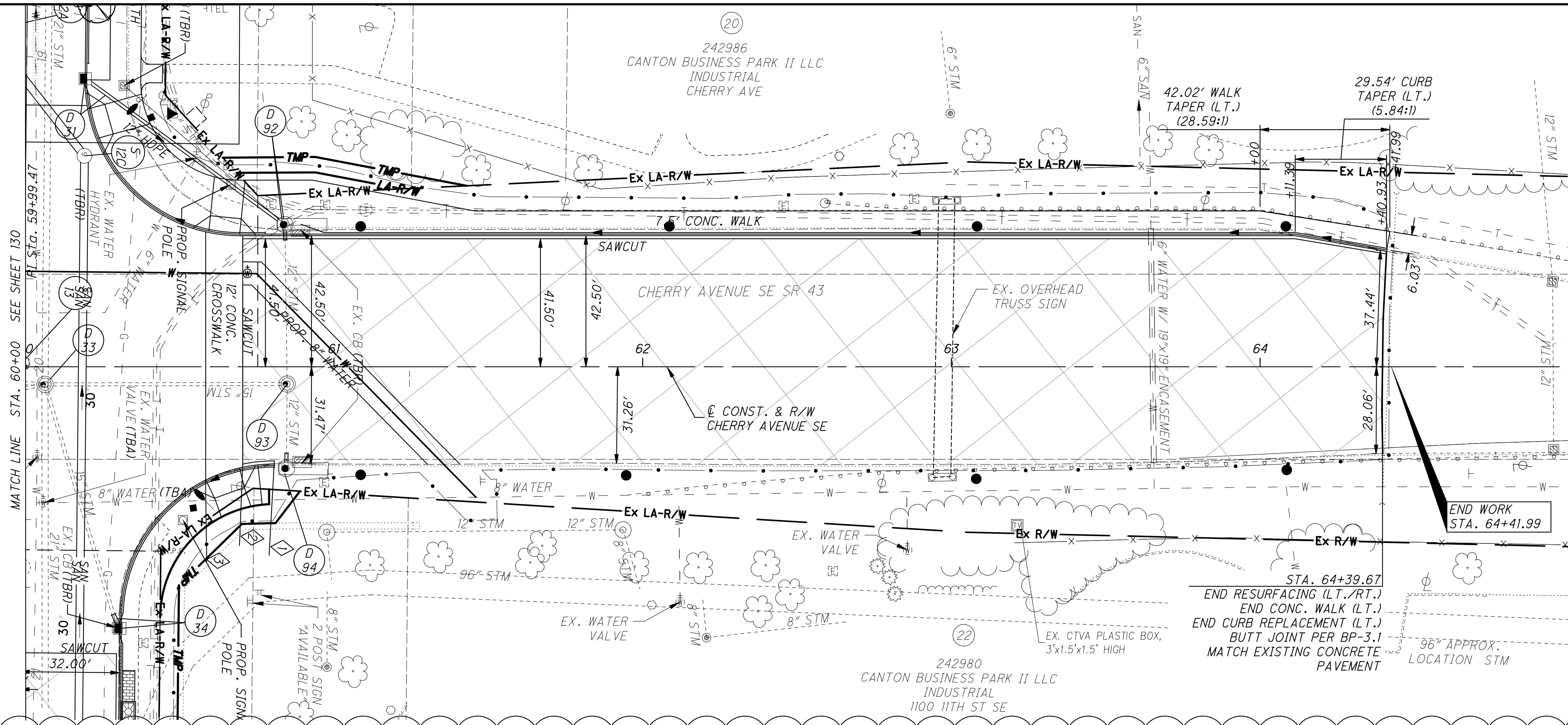
FOR CHERRY AVENUE SE CROSS SECTIONS, SEE SHEETS 132-149.

FOR INTERSECTION DETAILS, SEE SHEETS 155-157.

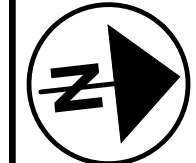
FOR PLAN VIEW LEGEND, SEE SHEET 24.



C:\pwworking\becom_ds20_na_2019\brittney.crandall@becom.com\dms20667\17790_GP003.dwg 10-May-23 4:34 PM



NOTES
PAVEMENT DIMENSIONS ARE MEASURED TO THE FACE OF CURB.
FOR CHERRY AVENUE SE CROSS SECTIONS, SEE SHEETS 132-149.
FOR PLAN VIEW LEGEND, SEE SHEET 24.

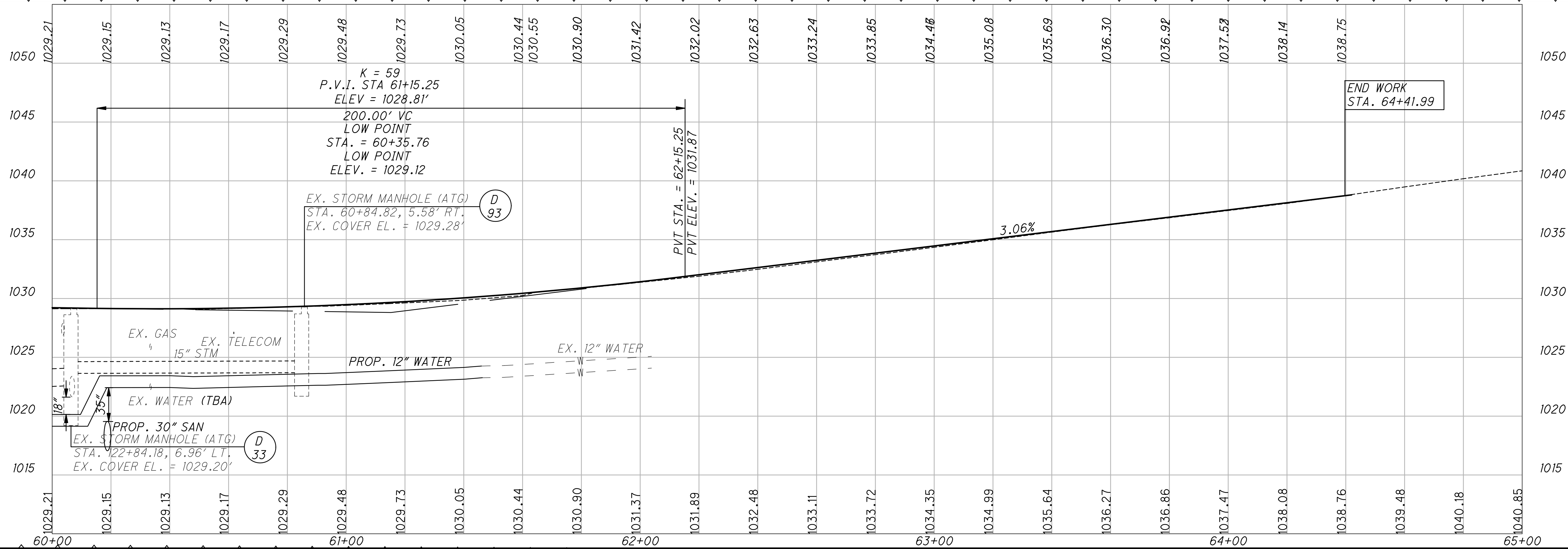


CALCULATED	JPK
CHECKED	JES

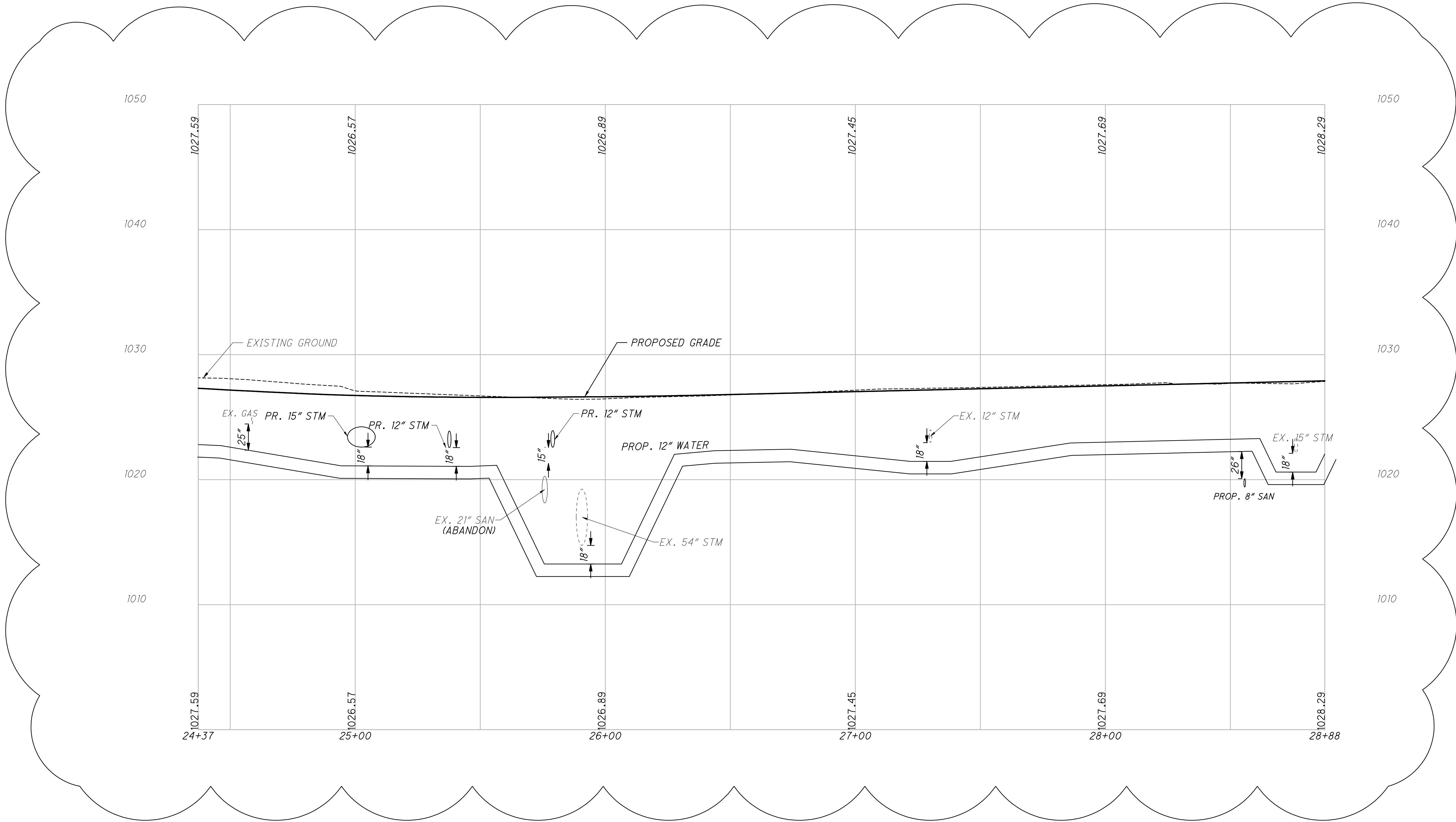
PLAN AND PROFILE - CHERRY AVENUE SE
STA. 61+00.00 TO END

STA - 11TH STREET SE
IMPROVEMENTS (PID 90465)

131
302

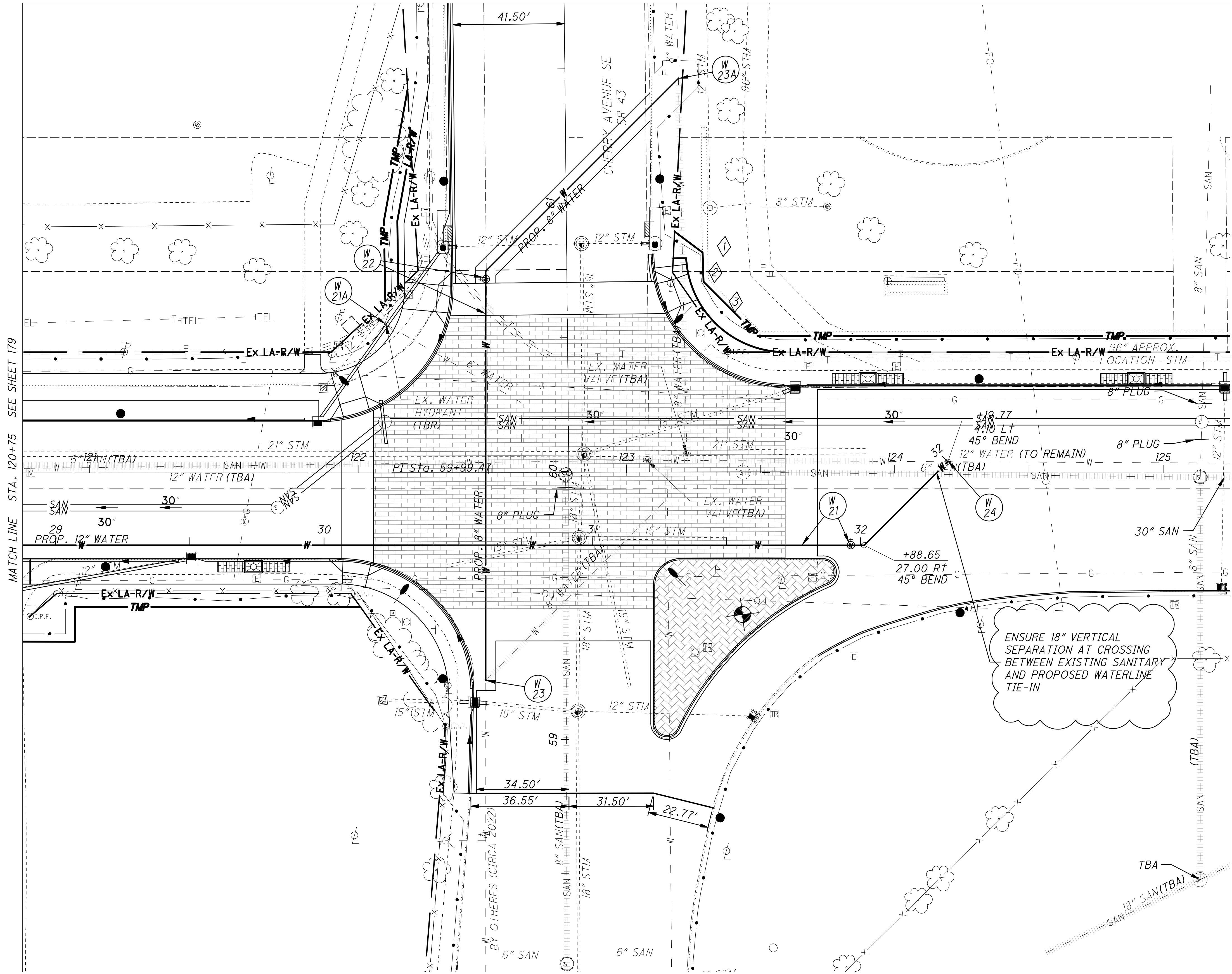


C:\pwworking\acem_ds20_na_2019\britney.crandall@acem.com\dms21996\17790_UP001.dwg 10-May-23 4:28 PM



CALCULATED JPK	STA - 11TH STREET SE IMPROVEMENTS (PID 90465)		WATER WORK PROFILE - 11TH STREET SE STA. 116+25 TO STA. 120+75	
CHECKED JES	180 302			

C:\pwworking\aecom_ds20_na_2019\brittney.randall@aecom.com\dms21996\17790_UP001.dwg 10-May-23 4:27 PM



NOTES:
FOR 11TH STREET SE PLAN AND
PROFILES, SEE SHEETS 47-64.

02040

HORIZONTAL
SCALE IN FEET

CALCULATED

JPK

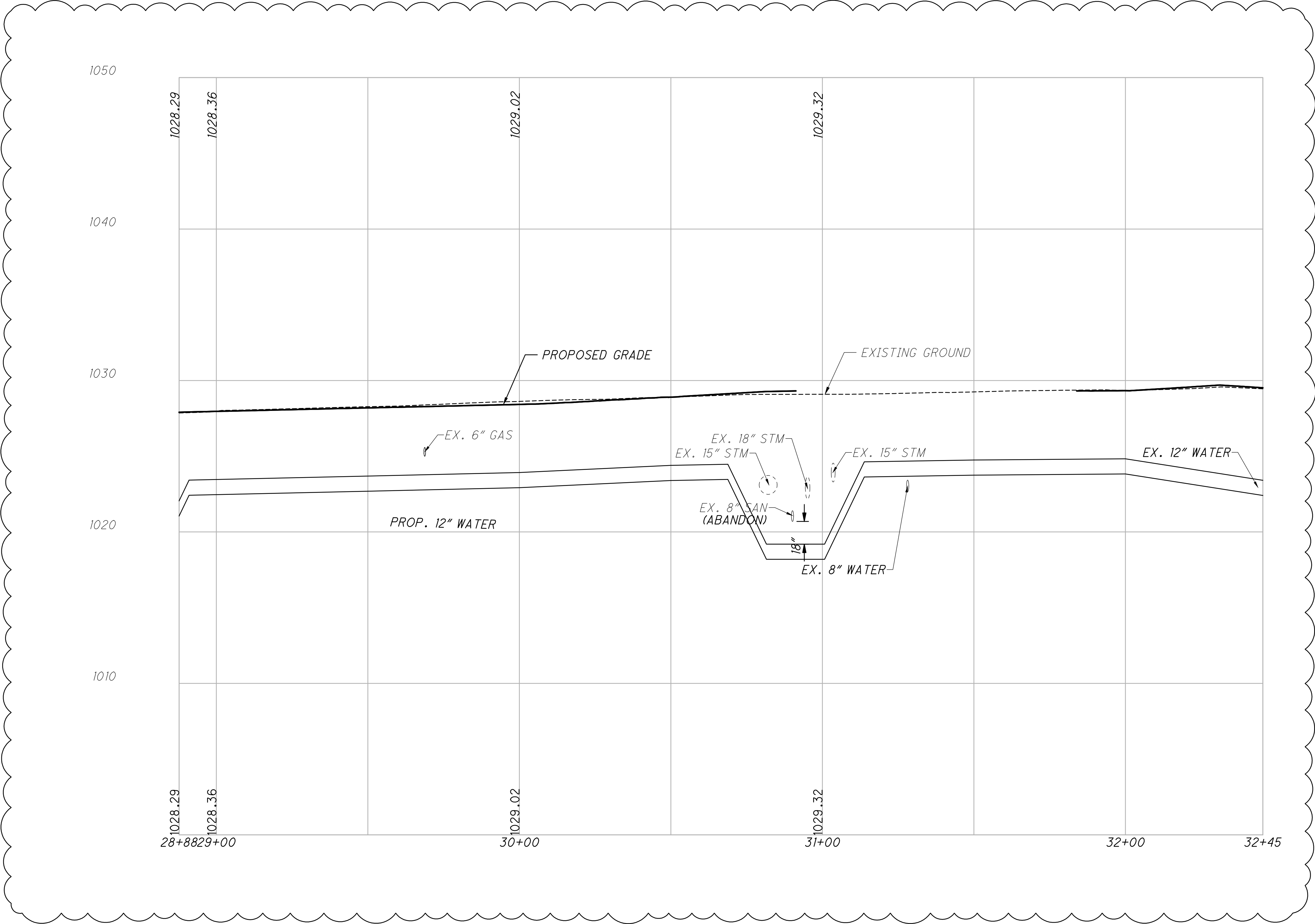
CHECKED

JES

181
302

STA - 11TH STREET SE
IMPROVEMENTS (PID 90465)

WATER WORK PLAN - 11TH STREET SE
STA. 120+75 TO 125+25



NOTE 2: FOR SLIP FORM CONSTRUCTION USING CITY STD. 30 OR ODOT TYPE 6 CURB, USE 9 IN. #3 DOWELS 3 IN INTO CURB AND EXTENDING 6 IN. INTO CONC. WALK, SPACED 2 FT ON CENTER IN LIEU OF MESH. SEE CITY STANDARD DRAWING 29, TYPE A, FOR DETAIL.

4X8 BRICK PAVER, 2 1/4" THICK - PAWNEE PAVER BY
BELDEN BRICK - TERRA COTTA RANGE EXCLUDED. OR APPROVED
USE PERPENDICULAR HERRINGBONE PATTERN. ALTERNATIVE.

SWEEP JOINTS WITH DRY MIXTURE OF POLYMERIC SAND
Techni-Seal OR APPROVED EQUAL. USE PLATE TAMPER
WITH RUBBER MAT OR OTHER PROTECTION FOR BRICK.
REMOVE EXCESS AND MOISTEN TO SET JOINT SEALANT SAND.

1" MAX COMPACTED CONCRETE SAND ODOT 703.02
(ASTM C 33) SETTING BED.

USE INTERIOR FORMING PINS FOR WEEP HOLES ON
DOWNSLOPE SIDES AND INTERIOR CORNERS.
MAX 4 FT. CENTERS. — COVER W/ FILTER FABRIC.

CONCRETE WALKS AND PAVER BASE IS TO BE CLASS "C"
ODOT 608. NO EXPANSION JOINTS ARE TO BE PLACED
AGAINST BRICK PAVER SECTIONS.
MAX 1/4" SPACE BETWEEN BRICK AND CONCRETE.

ODOT REFERENCES ARE FROM THE CURRENT ODOT CONSTRUCTION AND MATERIAL SPECIFICATIONS. ANY DISCREPANCIES SHALL BE SUBJECT TO THE CITY ENGINEER'S DISCRETION.

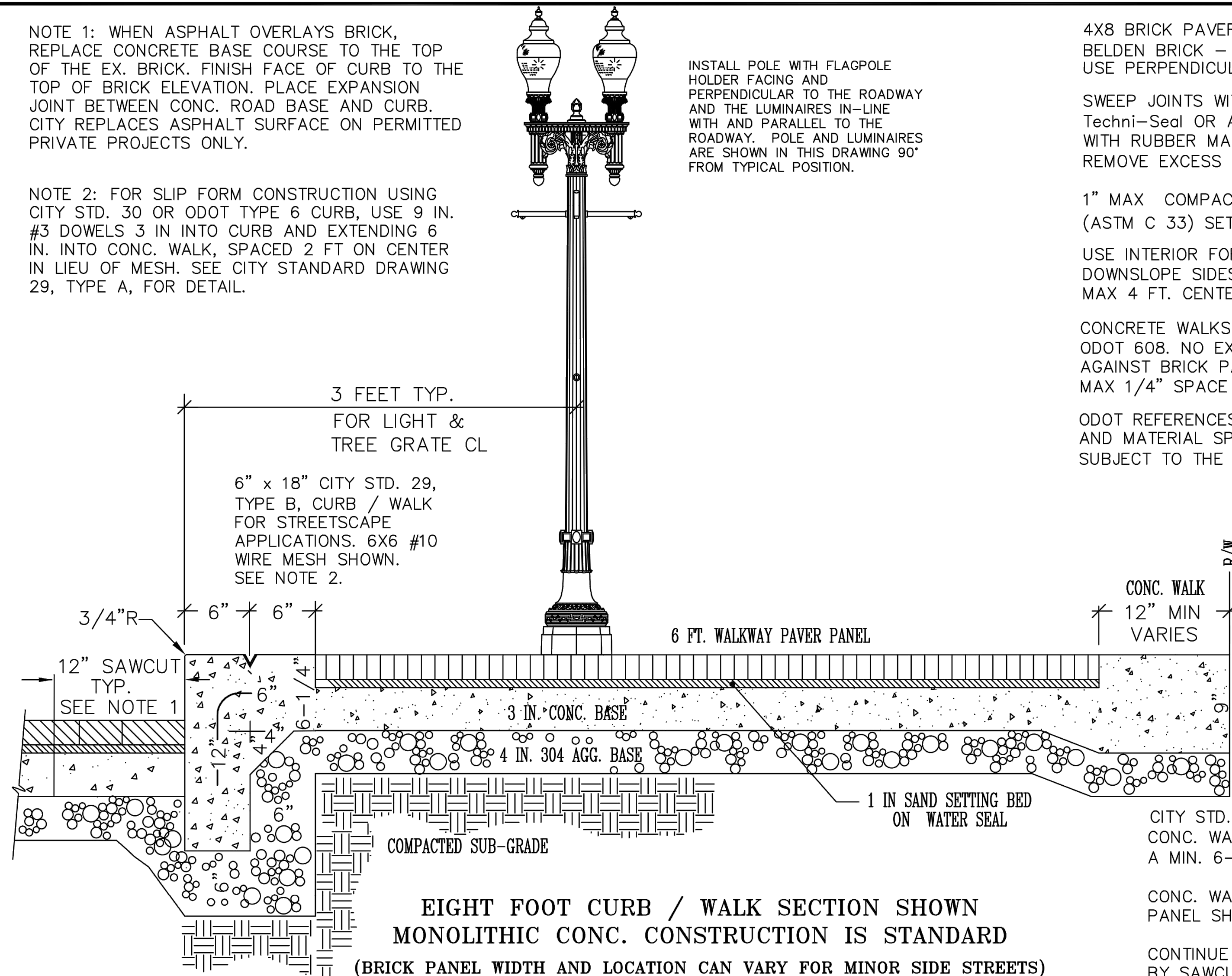
CONCRETE WALK EXPANSION JOINT -
1/2" CLOSED CELL EXPANSION JOINT
FILLER TO BE SEALTIGHT CERAMAR WITH
1/2" PEEL STRIP OR EQUAL. PLACE
EXP. JOINTS AGAINST BUILDINGS,
STRUCTURAL FOUNDATIONS, AND 60FT
O.C. IN WALK, TYP. SEAL EXPANSION
JOINTS WITH POLYURETHANE
ELASTOMERIC SEALANT TREMCO THC
900/901 OR EQUAL.

TYPICAL TOOLED AND CUT CONTROL
JOINT, 1/4 DEPTH OF SLAB

CITY STD. CONC. WALK (COMMERCIAL) IS 5 IN. THICK.
CONC. WALK WITHIN 6 IN. OF BRICK PANEL SHALL BE
A MIN. 6-1/4" THICK.

CONC. WALK WITHIN 12 IN. OF R/W AND NEXT TO BRICK
PANEL SHALL BE A MIN. 9 IN. THICK.

CONTINUE TRANSVERSE WALK CONTROL JOINTS
BY SAWCUTTING ACROSS BRICK CONC. BASE.



OFFICE OF THE CITY ENGINEER
CANTON, OHIO

DANIEL J. MOEGLIN, P.E., CITY ENGINEER
2436 30th St. NE 44705 330-489-3381 www.cantonohio.gov/engineering

DESCRIPTION	DATE	BY
CAD DRAWING	FEB 2012	JTD
REVISED JOINT NO TIES AND BRICK BOX	02/26/2019	RMB
TITLE BLOCK REVISION	03/02/2021	GML

STANDARD DRAWING NO. 40

TYPICAL STREETSCAPE

CORRIDOR

CE 40 20210302.DWG

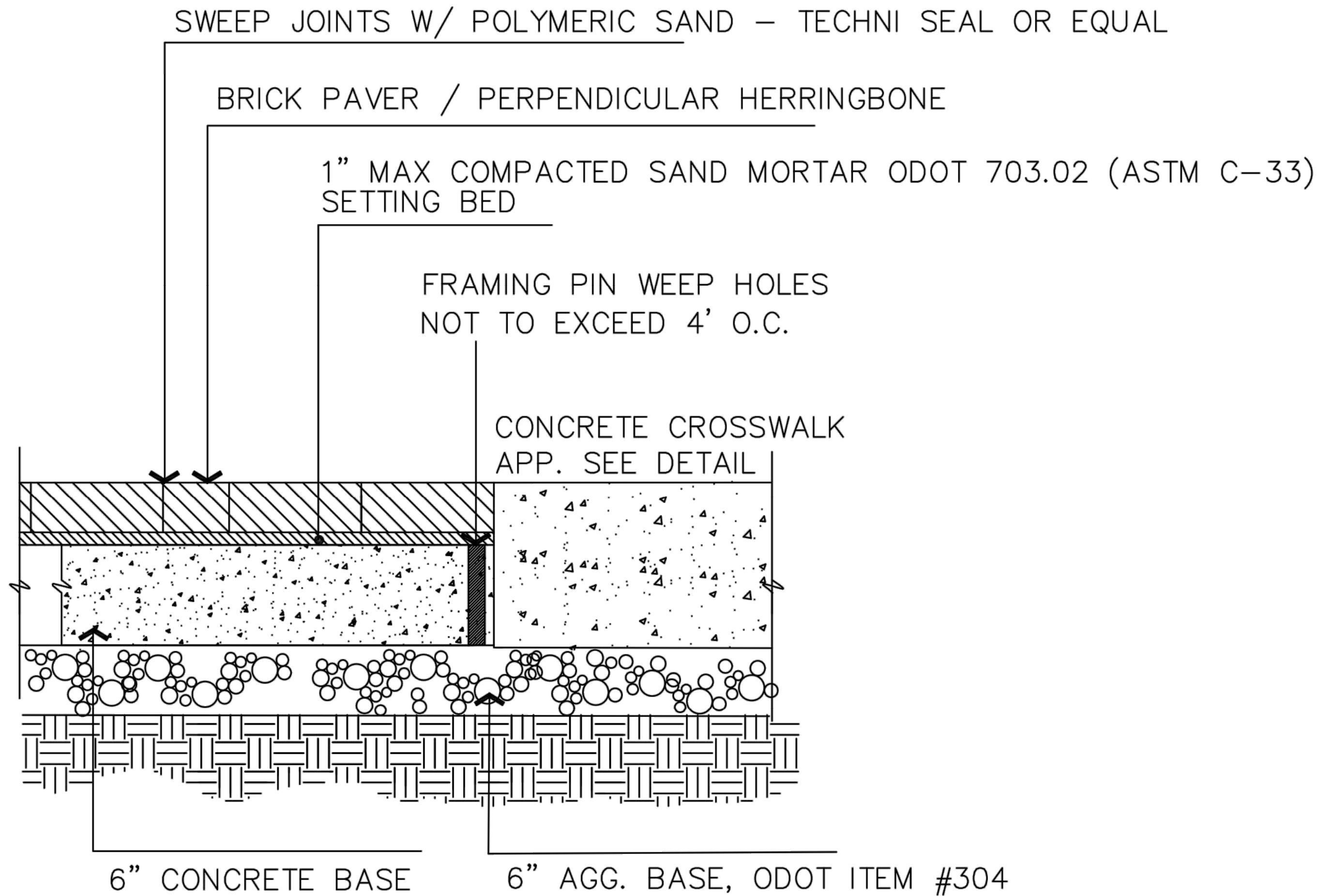
1 OF 1

CITY OF CANTON STANDARD DRAWINGS

**SIA - 11TH STREET SE
IMPROVEMENTS (PID 90465)**

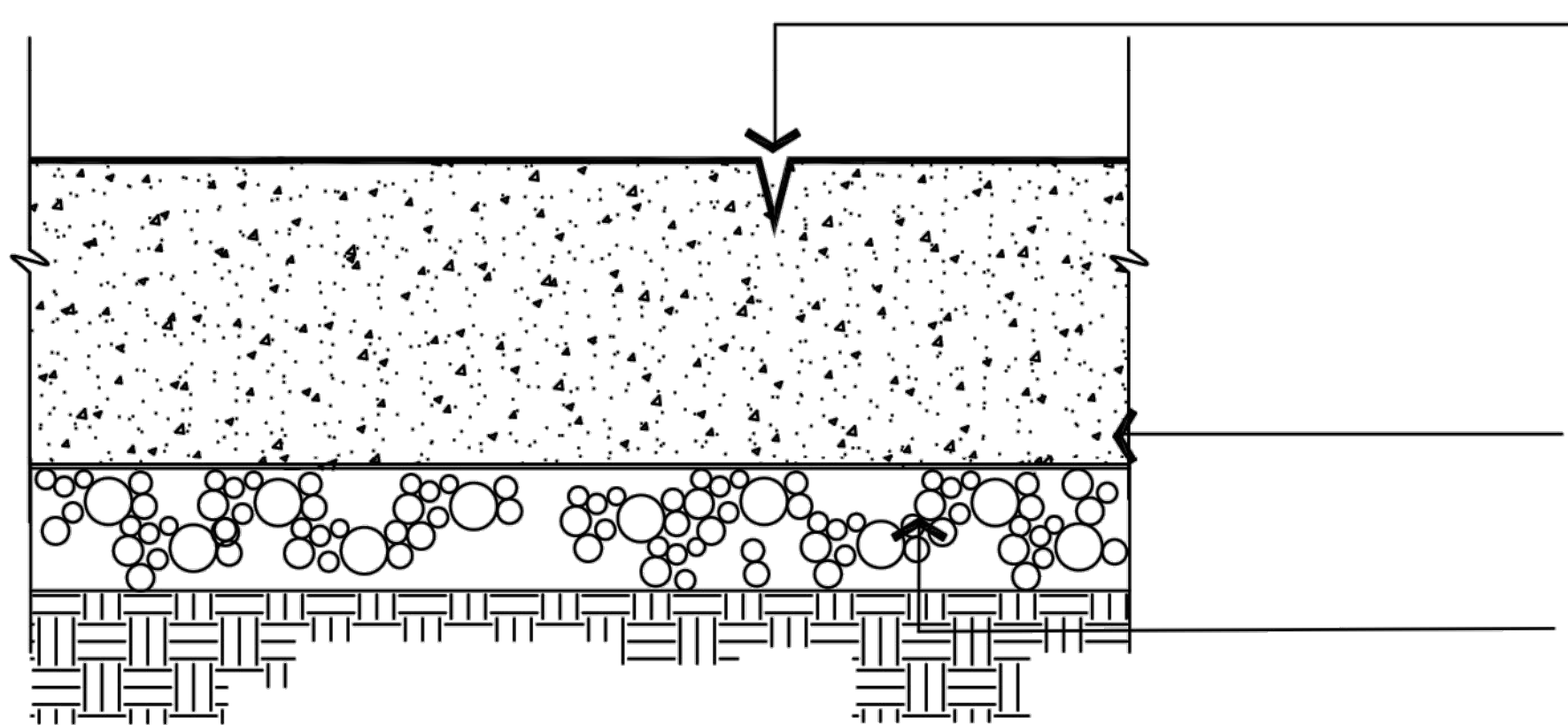
194A
302

C:\pwworking\aecom_ds20_na_2019\brittney.crandall@aecom.com\dms20667\17790_GM001.dwg 10-May-23 4:24 PM



NOTE: NO FOUNDRY SAND OR SLAG IS PERMITTED IN AGGREGATE BASE (304).

CROSSWALK DETAIL



TYPICAL TOOLED AND CUT CONTROL JOINT 1/4 DEPTH OF SLAB – SPACING OF JOINTS TO BE 4' O.C. ALIGN CONCRETE CROSSWALK AND CONCRETE WALK JOINTS.

EXPANSION JOINTS – 1/2" CLOSED CELL EXPANSION JOINT FILLER TO BE SEALTIGHT CERAMAR OR EQUAL – 60FT O.C. TYPICAL. SEAL EXPANSION JOINTS WITH POLYURETHANE ELASTOMERIC SEALANT TYP. TREMCO THC 900/901 OR EQUAL.

10" ITEM 452 PLAIN PORTLAND CEMENT CLASS C (LIMESTONE) CONCRETE PAVEMENT

COMPACTED AGGREGATE BASE ODOT ITEM 304, 6" TYP.

BRICK PAVER, 4"x8"x2 3/4" THICK – ROADWAY PAVER BY BELDEN-BRICK – CRABAPPLE PAVER, CRESTLINE SERIES. ~~OR APPROVED ALTERNATIVE.~~ USE PERPENDICULAR HERRINGBONE PATTERN IN INTERSECTION.

SWEEP JOINTS WITH DRY MIXTURE OF POLYMERIC SAND Techni-Seal OR APPROVED EQUAL. USE PLATE TAMPER WITH RUBBER MAT OR OTHER PROTECTION FOR BRICK. REMOVE EXCESS AND MOISTEN TO SET JOINT SEALANT SAND.

1" MAX COMPACTED CONCRETE SAND ODOT 703.02 (ASTM C 33) SETTING BED W/ MORTAR.

USE INTERIOR FORMING PINS FOR WEEP HOLES ON DOWNSLOPE SIDES AND INTERIOR CORNERS. MAX 4 FT. CENTERS. – COVER W/ FILTER FABRIC.

CONCRETE CROSSWALK AND PAVER BASE IS TO BE CLASS "C" ODOT 499.03 – HIGH EARLY. NO EXPANSION JOINTS ARE TO BE PLACED AGAINST BRICK PAVER SECTIONS.

MAX 1/4" SPACE BETWEEN BRICK AND CONCRETE. PROVIDE 1/4" RADIUS ON ALL SLAB EDGES.

ODOT REFERENCES ARE FROM THE CURRENT ODOT CONSTRUCTION AND MATERIAL SPECIFICATIONS. ANY DISCREPANCIES SHALL BE SUBJECT TO THE CITY ENGINEER'S DISCRETION.

ALL CONCRETE CONSTRUCTION TO CONFORM TO CURRENT CITY OF CANTON SPECIFICATIONS FOR CONSTRUCTION, REPAIR AND REPLACEMENT OF SIDEWALKS, CURBS AND DRIVEWAYS.



OFFICE OF THE CITY ENGINEER
CANTON, OHIO
DANIEL J. MOEGLIN, P.E., CITY ENGINEER
2436 30th St. NE 44705 330-489-3381 www.cantonohio.gov/engineering

DESCRIPTION	DATE	BY
CAD DRAWING	FEB 2012	JTD
REVISED JOINT NOTES	02/26/2019	RMB
TITLE BLOCK REVISION	03/03/2021	GML

STANDARD DRAWING NO. 41

ROADWAY BRICK & CROSSWALK PAVEMENT DETAILS

CE_41_20210303.DWG

1 OF 1

STA - 11TH STREET SE
IMPROVEMENTS (PID 90465)

194B
302

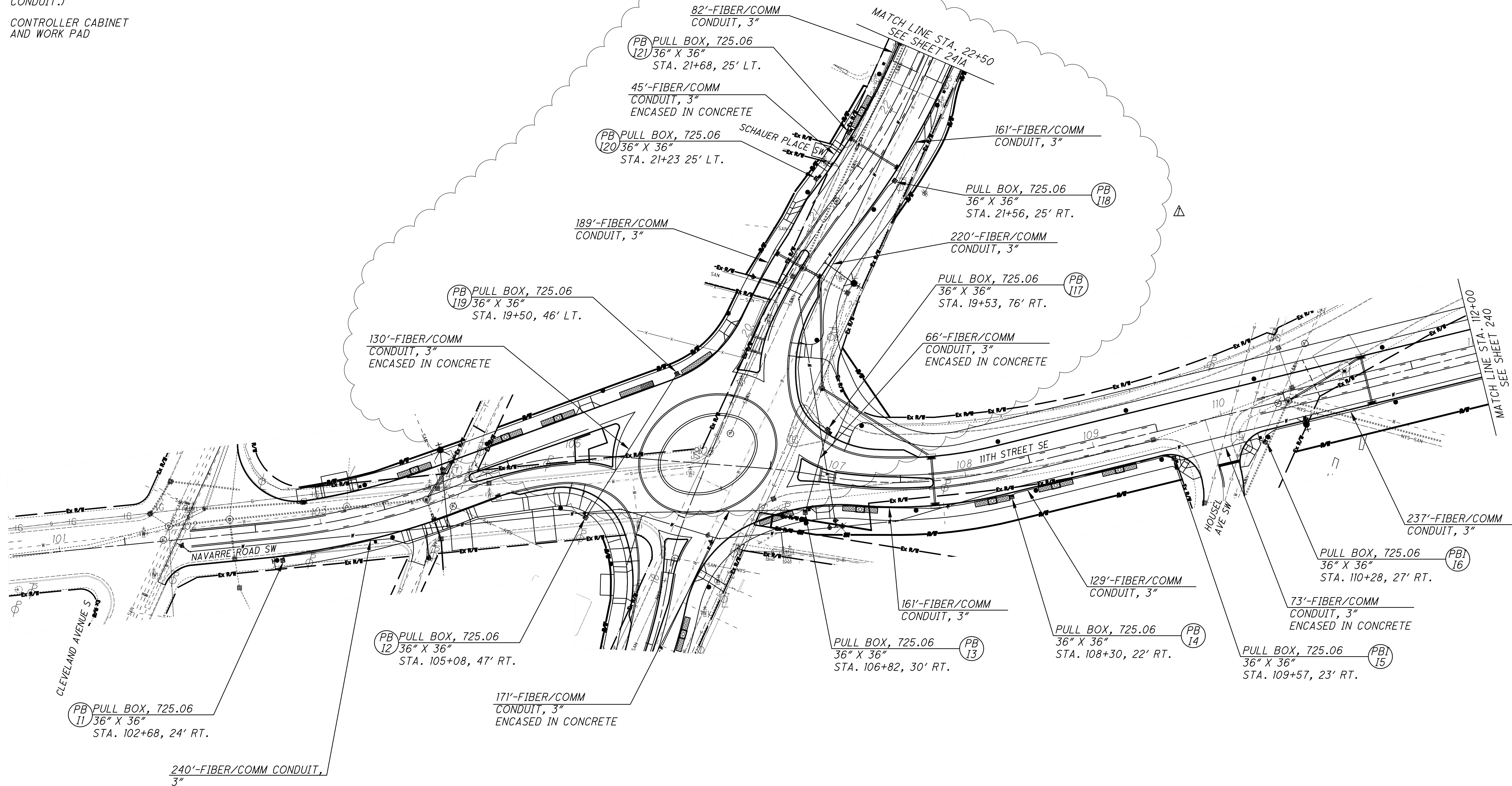
CITY OF CANTON STANDARD DRAWINGS

CALCULATED
CHECKED

C:\pwworking\acem_ds20_na_2019\clara.xin@acem.com\dms20737\17790_CP003.dwg 10-May-23 4:39 PM

LEGEND

- TRAFFIC INTERCONNECT PULL BOX, 36"X36", 725.06
- CONDUIT (ALL CONDUIT LABELED IN INTERCONNECT PLANS (EXCEPT AS NOTED) CONTAIN FIBER OPTIC CABLE, ARMORED, 48 FIBER. INTERCONNECT CONDUIT SHALL SHARE SAME TRENCH AS LIGHTING CONDUIT.)
- CONTROLLER CABINET AND WORK PAD



0 20 40 80
HORIZONTAL SCALE IN FEET

CALCULATED CX
CHECKED VMN

INTERCONNECT PLAN
11TH STREET SE - BEGINNING TO STA. 112+00

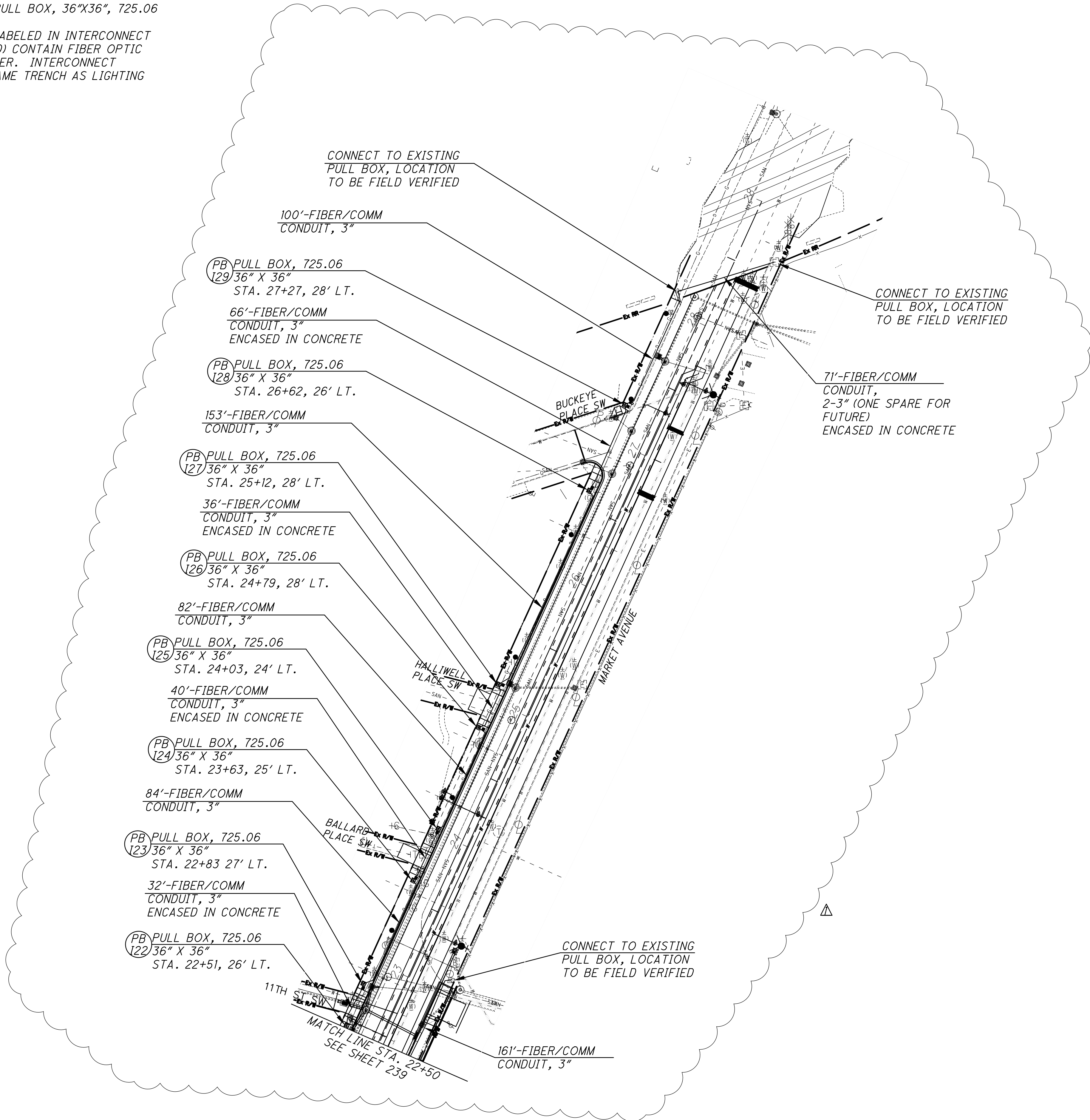
STA - 11TH STREET SE
IMPROVEMENTS (PID 90465)

239
302

C:\pwworking\aecom_ds20_na_2019\clara.xin@aecom.com\dms20737\17790_CP003.dwg 10-May-23 4:40 PM

LEGEND

- TRAFFIC INTERCONNECT PULL BOX, 36"X36", 725.06
- CONDUIT (ALL CONDUIT LABELED IN INTERCONNECT PLANS (EXCEPT AS NOTED) CONTAIN FIBER OPTIC CABLE, ARMORED, 48 FIBER. INTERCONNECT CONDUIT SHALL SHARE SAME TRENCH AS LIGHTING CONDUIT.)
- CONTROLLER CABINET AND WORK PAD



0

20

40

80

HORIZONTAL

SCALE IN FEET

CALCULATED

CX

CHECKED

VMN

INTERCONNECT PLAN
MARKET AVENUE S - STA. 22+50 TO ENDING

STA - 11TH STREET SE
IMPROVEMENTS (PID 90465)

241A
302

ADDENDUM 5/10/23

C:\pwworking\aecom_ds20_na_2019\clara.xin@aecom.com\dms20737\17790_CS003.dwg 10-May-23 4:37 PM

SHEET NO.	REFERENCE NO.	STATION		SIDE	625	625	625	625	625	804	804	804	804	804	804	804	804	804	
					CONDUIT, 3", 725.05	<div>CONDUIT, 3", 725.05, AS PER PLAN</div>	TRENCH	PULL BOX, MISC.: 725.06 (36" X 36")	UNDERGROUND WARNING/MARKING TAPE	FIBER OPTIC CABLE, ARMORED, 48 FIBER	FAN-OUT KIT, 12 FIBER	DROP CABLE, 12 FIBER	FIBER OPTIC PATCH CORD, 1 FIBER	FIBER TERMINATION PANEL, 24 FIBER	FUSION SPLICE	SPLICE ENCLOSURE, BUTT STYLE	FIBER OPTIC CONNECTOR	FIBER OPTIC CABLE TESTING	FIBER OPTIC CABLE MODEM
		FT	FT		FT														
239	PB-I1	102+68	105+08	RT	240			1		245									
	PB-I2	105+08	106+82	RT		171		1		176									
	PB-I3	106+82	108+30	RT	161			1		166									
	PB-I4	108+30	109+57	RT	129			1		134									
	PB-I5	109+57	110+28	RT		73		1		78									
	PB-I6	110+28	112+60	RT	237			1		242									
240	PB-I7	112+60	114+60	RT	200			1		205									
	PB-I8	114+60	116+70	RT	210			1		215									
	PB-I9	116+70	118+77	RT	207			1		212									
	PB-I10	118+77	120+24	RT	147			1		152									
	PB-I11	120+24	120+82	RT		58		1		63									
	PB-I12	120+82	122+25	RT	150			1		155									
241	PB-4 TO CONTROLLER	122+25	122+24	RT						178	2	1	2	1	12	1	2		
	PB-4	122+25	123+18	RT		96				101									
	PB-I13	123+18	124+19	RT		101	101	1	101	106									
	PB-I14	124+19	126+06	RT	190			1		195									
	PB-I15	126+06	127+62	RT	165			1		170									
	PB-I16	127+62	128+79	RT		118		1		123									
	PB-4 TO CONTROLLER	128+79	128+82	RT						165	2	1	2	1	12	1	2	LS	
239	PB-I17	19+53	21+56	RT	220	66	220	1	220	296									
	PB-I18	21+56	EX PB	RT	161		161	1	161	166									
	PB-I19	19+50	21+23	LT	189	130	319	1	319	329									
	PB-I20	21+23	21+68	LT		45		1		50									
	PB-I21	21+68	22+51	LT	82			1		87									
241A	PB-I22	22+51	22+83	LT		32		1		37									
	PB-I23	22+83	23+63	LT	84			1		89									
	PB-I24	23+63	24+03	LT		40		1		45									
	PB-I25	24+03	24+79	LT	82			1		87									
	PB-I26	24+79	25+12	LT		36		1		41									
	PB-I27	25+12	26+62	LT	153			1		158									
	PB-I28	26+62	27+27	LT		66		1		71									
	PB-I29	27+27	EX PB	LT	100		30	1	30	105									
	EX-PB	ABOUT 28+25	ABOUT 28+50	LT		142	71		71	76									
TOTALS CARRIED TO GENERAL SUMMARY					3107	1174	902	29	902	4718	4	2	4	2	24	2	4	LS	2

C:\pwworking\aeocom_ds20_na_2019\clara.xin@aeocom.com\dms20578\17790_LS001.dwg 10-May-23 4:33 PM

REF NO.	SHEET NO.	ROADWAY	STATION TO STATION				625	625	625	625	625	625	625	625	625	625	625	625	625	625	SPECIAL	625	625	625	625	625	625		
							CONNECTION, FUSED PULL APART	CONNECTION, UNFUSED PULL APART	LIGHT POLE, DECORATIVE, AS PER PLAN	LIGHT POLE FOUNDATION, MISC.: 30" X 6' DEEP	NO. 6 AWG 600 VOLT DISTRIBUTION CABLE	NO. 12 AWG POLE AND BRACKET CABLE	CONDUIT, 2", 725.05	CONDUIT, 2", 725.05, AS PER PLAN	CONDUIT, JACKED OR DRILLED, 725.04 ,2"	LUMINAIRE, CONVENTIONAL, AS PER PLAN	LUMINAIRE, DECORATIVE, AS PER PLAN	TRENCH	PULL BOX, MISC.: 725.06 (17" X 30")	GROUND ROD	POWER SERVICE, AS PER PLAN	UNDERGROUND WARNING/MARKING TAPE	MAINTAIN EXISTING LIGHTING	LIGHT POLE REMOVED	LIGHT POLE FOUNDATION REMOVED	LUMINAIRE REMOVED	POWER SERVICE REMOVED	DISCONNECT CIRCUIT	ARC FLASH CALCULATIONS AND LABEL (CC)
						EACH	EACH	EACH	EACH	FT	FT	FT	FT	FT	EACH	EACH	FT	EACH	EACH	EACH	FT	LS	EACH	EACH	EACH	EACH	EACH	EACH	
CD-3	253	11TH ST SE	130+54	RT		3	1	1	1		120					2		1											
			130+54	RT																									
CD-2	252	11TH ST SE	129+59	RT		3	1	1	1	424	120	96				2		96		1		96							
			129+59	RT																									
			129+59	RT						420		95					95				95								
CD-1	252	11TH ST SE	128+69	RT		3	1				165				1														
			128+69	RT						64		6					6				6								
RM-1	250	MARKET AVE	15+63	RT																						1			
RM-2	250	MARKET AVE	16+90	LT																				1	1		1		
RM-3	250	MARKET AVE	20+16	LT																			1	1	1		1		
RM-4	250	MARKET AVE	21+54	RT																					1		1		
RM-5	250	11TH ST SE	102+87	RT																					1		1		
RM-6	250	11TH ST SE	104+79	RT																					1		1		
RM-7	250	11TH ST SE	107+83	RT																					1		1		
RM-8	250	11TH ST SE	110+01	LT																					1		1		
RM-9	250	11TH ST SE	112+04	LT																					1		1		
RM-10	250	11TH ST SE	113+11	LT																					1		1		
RM-11	250	11TH ST SE	115+35	LT																					1		1		
RM-12	251	11TH ST SE	118+00	RT																			1	1	1		1		
RM-13	252	11TH ST SE	120+95	RT																			1	1	1		1		
RM-14	252	11TH ST SE	121+90	LT																			1	1	1		1		
RM-15	252	11TH ST SE	123+17	LT																			1	1	1		1		
RM-16	252	11TH ST SE	123+58	RT																			1	1	1		1		
RM-17	252	11TH ST SE	124+32	RT																			1	1	1		1		
RM-18	252	11TH ST SE	124+68	LT																			1	1	1		1		
RM-19	252	11TH ST SE	125+73	RT																			1	1	1		1		
RM-20	252	11TH ST SE	126+73	LT																			1	1	1		1		
RM-21	252	11TH ST SE	127+22	RT																			1	1	1		1		
RM-22	252	11TH ST SE	129+08	LT																			1	1	1		1		
RM-23	252	CHERRY AVE	58+58	RT																			1	1	1		1		
RM-24	252	CHERRY AVE	59+20	LT																			1	1	1		1		
RM-25	252	CHERRY AVE	61+75	LT																			1	1	1		1		
RM-26	252	CHERRY AVE	62+77	RT																			1	1	1		1		
RM-27	252	CHERRY AVE	63+82	LT																			1	1	1		1		
RM-28	252	CHERRY AVE	64+85	RT																			1	1	1		1		
RM-29	253	11TH ST SE	130+80	RT																			1	1	1		1		
RM-30	253	11TH ST SE	132+26	LT																			1	1	1		1		
RM-31	253	11TH ST SE	133+74	RT																			1	1	1		1		
RM-32	253	11TH ST SE	135+61	RT																					1		1		
RM-LCC	251	11TH ST SE	121+93	RT																						1			
PB-EX	254	MARKET AVE	ABOUT 28+00	RT										156															
PB-EX	254	MARKET AVE	ABOUT 28+00	LT								5																	
AB-6	254	MARKET AVE	27+96	LT							120					2		1											
			27+96	LT													69				69								
AB-5	254	MARKET AVE	27+32	LT							120					2		6		1									
			27+32	LT																		6							
PB-A18	254	MARKET AVE	27+26	LT								6					6												
			27+26	LT														1											
PB-A17	254	MARKET AVE	26+64	LT													62												
			26+64	LT																									
TOTALS CARRIED TO 249							15	5	4	4	1760	645	277	218	0	1	8	334	1	4	0	334	0	22	22	32	1	32	0
TOTALS CARRIED FROM 244							60	20	20	20	8500	2400	1590	170	0	0	40	1760	8	20	0	1760	1	0	0	0	0	0	0
TOTALS CARRIED FROM 245							54	18	18	18	8376	2160	1934	350	0	0	36	2284	9	18	0	2284	0	0	0	0	0	0	0
TOTALS CARRIED FROM 246							63	21	19	19	8840	2610	1672	184	0	2	38	1856	7	19	1	1856	0	0	0	0	0	0	1
TOTALS CARRIED FROM 247							54	18	15	15	10216	2295	1592	568	0	3	30	1592	7	15	0	1592	0	0	0	0	0	0	0
TOTALS CARRIED FROM 248							60	20	18	18	9160	2490	1764	194	89	2	36	1764	7	18	1	1764	0	0	0	0	0	0	1
TOTALS CARRIED FROM THIS SHEET							15	5	4	4	1760	645	277	218	0	1	8	334	1	4	0	334	0	22	22	32	1	32	0
TOTALS CARRIED TO GENERAL SUMMARY							306	102	94	94	46852	12600	8829	1684	89	8	188	9590	39	94	2	9590	1	22	22	32	1	32	2

LIGHTING SUBSUMMARY

STA - 11TH STREET SE
IMPROVEMENTS (PID 90465)

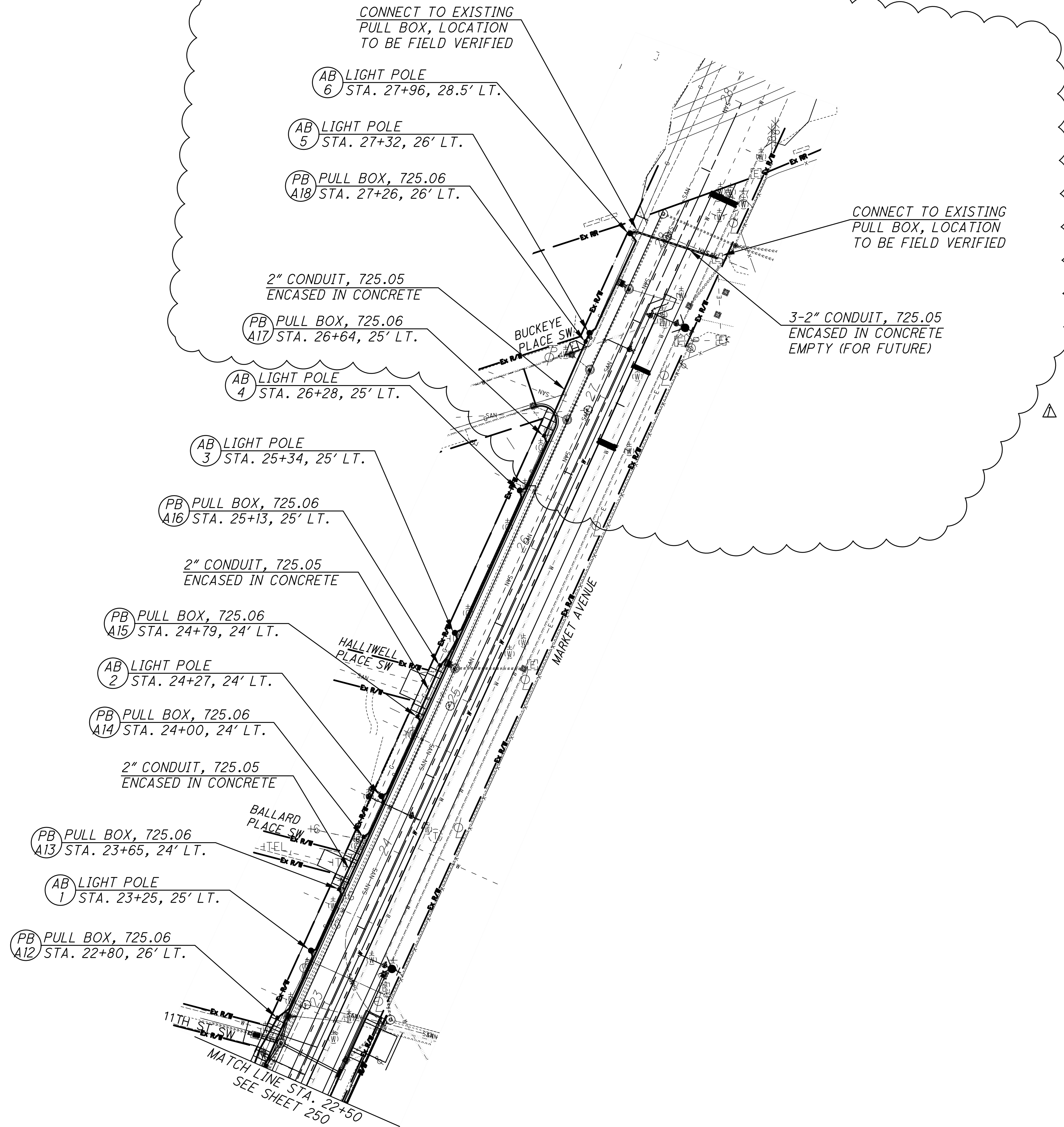
249
302

CALCULATED
CX
CHECKED
JAN

C:\pwworking\acocom_ds20_na_2019\clara.xin@acocom.com\dms20578\17790_LP001.dwg 10-May-23 4:47 PM

LEGEND

- BRACKET ARM & 100W LED (ON COMBINATION SIGNAL POLE)
- DECORATIVE LIGHT POLE WITH 60W LED TWIN LUMINAIRES & 20A-125V DUPLEX RECEPTACLE
- NEW POWER SERVICE/CONTROL CENTER
- PULL BOX, 725.06 (17"X30")
- CONDUIT, 725.05, TYPE EB, SCHEDULE 40 PVC (TYPICAL UNLESS NOTED)
- STUB AND CAP CONDUIT ELL



0

20

40

80

HORIZONTAL SCALE IN FEET

CALCULATED

CX

CHECKED

JAN

STA - 11TH STREET SE IMPROVEMENTS (PID 90465)

254
302

LIGHTING PLAN

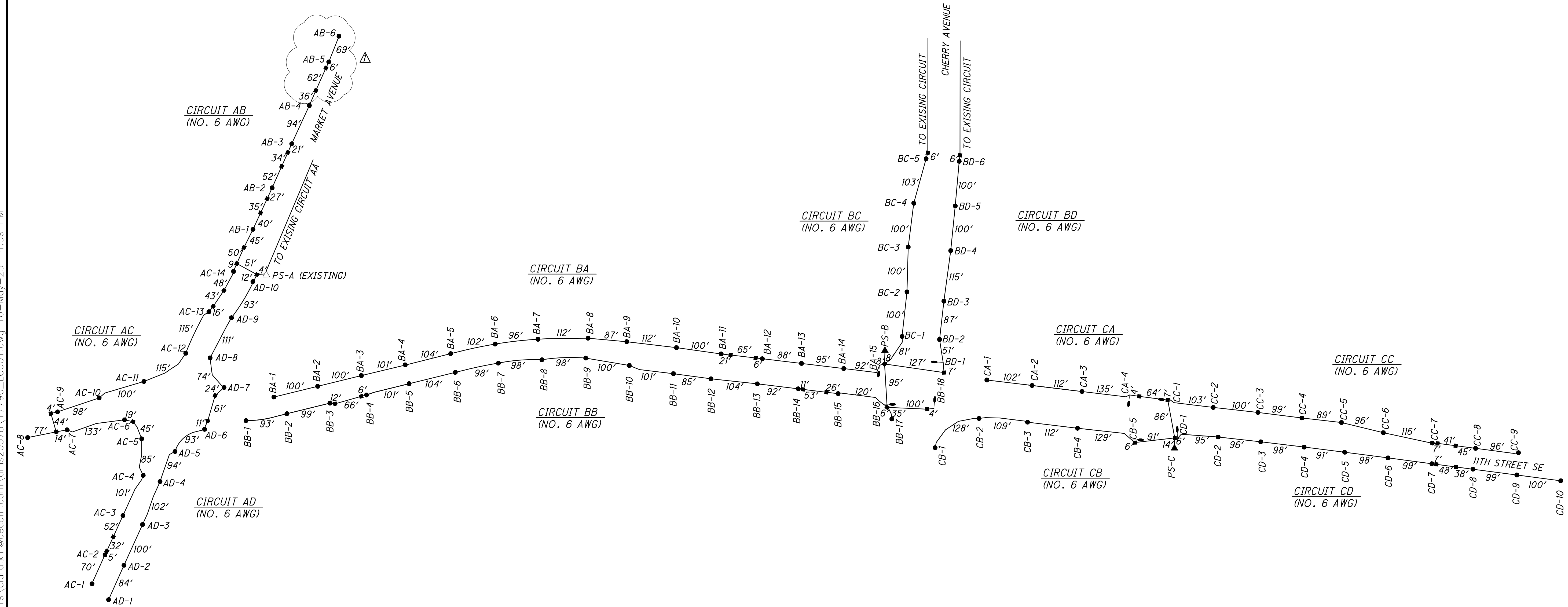
MARKET AVENUE S - STA. 22+50 TO ENDING

ADDENDUM 5/10/23

C:\pwworking\acom_ds20_na_2019\clara.xin@acom.com\dms20578\17790_LC001.dwg 10-May-23 4:59 PM

LEGEND

- BRACKET ARM & 100W LED (ON SIGNAL POLE)
- DECORATIVE LIGHT POLE WITH 60W LED TWIN LUMINAIRES & 20A-125V DUPLEX RECEPTACLE
- NEW POWER SERVICE/CONTROL CENTER
- PULL BOX, 725.06 (17"x30")



POWER SERVICE DATA									
POWER SERVICE	LINE VOLTAGE (VOLTS)	CONNECTED LOAD (KVA)	SERVICE ENTRANCE CABLE (AWG)	ENCLOSURE RATING (AMPS)	CIRCUIT NUMBER	CIRCUIT LOAD (AMPS)	CIRCUIT FUSE SIZE (AMPS)	CIRCUIT CABLE SIZE (AWG)	MAINTAINING AGENCY
PS-A (EX.)	240	5.62	#2	120	A (EX)	3.9	40	6	CITY OF CANTON
					B	3.9	40	6	
					C	9.1	40	6	
					D	6.5	40	6	
PS-B	240	10.60	#2	120	A	9.64	40	6	
					B	11.48	40	6	
					C	11.26	40	6 & 4 (EX)	
					D	11.8	40	6 & 4 (EX)	
PS-C	240	4.26	#2	120	A	2.49	40	6	
					B	3.14	40	6	
					C	5.74	40	6	
					D	6.39	40	6	

0

10

20

30

40

50

60

70

80

90

100

HORIZONTAL SCALE IN FEET

CALCULATED

CX

CHECKED

JAN

STA - 11TH STREET SE IMPROVEMENTS (PID 90465)

255/302

LIGHTING CIRCUIT DIAGRAM