

BOARD OF COMMISSIONERS
Meetings Second Tuesday

DR. MELVIN WALKER, JR.
Chairman

MARTIN H. MOSELEY, JR.
Vice-Chairman

BETTY C. HILL

ROY LEWIS

WALTER SMITH

MARCIA W. JOHNSON
County Administrator

Peach County

213 Persons Street
Fort Valley, Georgia 31030
Phone 478-825-2535
Fax 478-825-2678

COUNTY OFFICIALS

DEBORAH W. HUNNICUTT
Probate Judge

JOE WILDER
Clerk of Superior Court

TERRY DEESE
Sheriff

W. L. BROWN
Tax Commissioner

KERRY ROOKS
Coroner

LAURENS C. LEE
Magistrate

REQUEST FOR BID No. 16-002 **Peach County Workforce Development Center Landscaping**

Addendum No. 2
December 29, 2015

PEACH COUNTY **GEORGIA**

Peach County Workforce Development Center Landscaping
425 James E. Khoury Blvd., Fort Valley, GA

PURPOSE:

1. Revise plans bid set.
2. Add 12 monthly inspections and condition and recommendation reports
3. Replace landscape Architect with Peach County Public works Director
3. Re-Schedule Pre-Bid meeting and site visit

ADDENDUM 2:

1. Revised Plans and Specifications:

The attached revised plans and specifications supersedes and/or replaces the plans and specifications included with RFB 16-002 (Exhibit 2). All references in RFB 16-002 to the "drawings and specifications" shall refer to the attached revised plans and specifications. All bids, and construction of the landscaping, shall be in accordance with the attached revised plans and specifications.

2. Replace landscape Architect with Peach County Public works Director:

All references to the "Landscape Architect" in the Plans and specifications shall be replaced with "Peach County Public works Director."

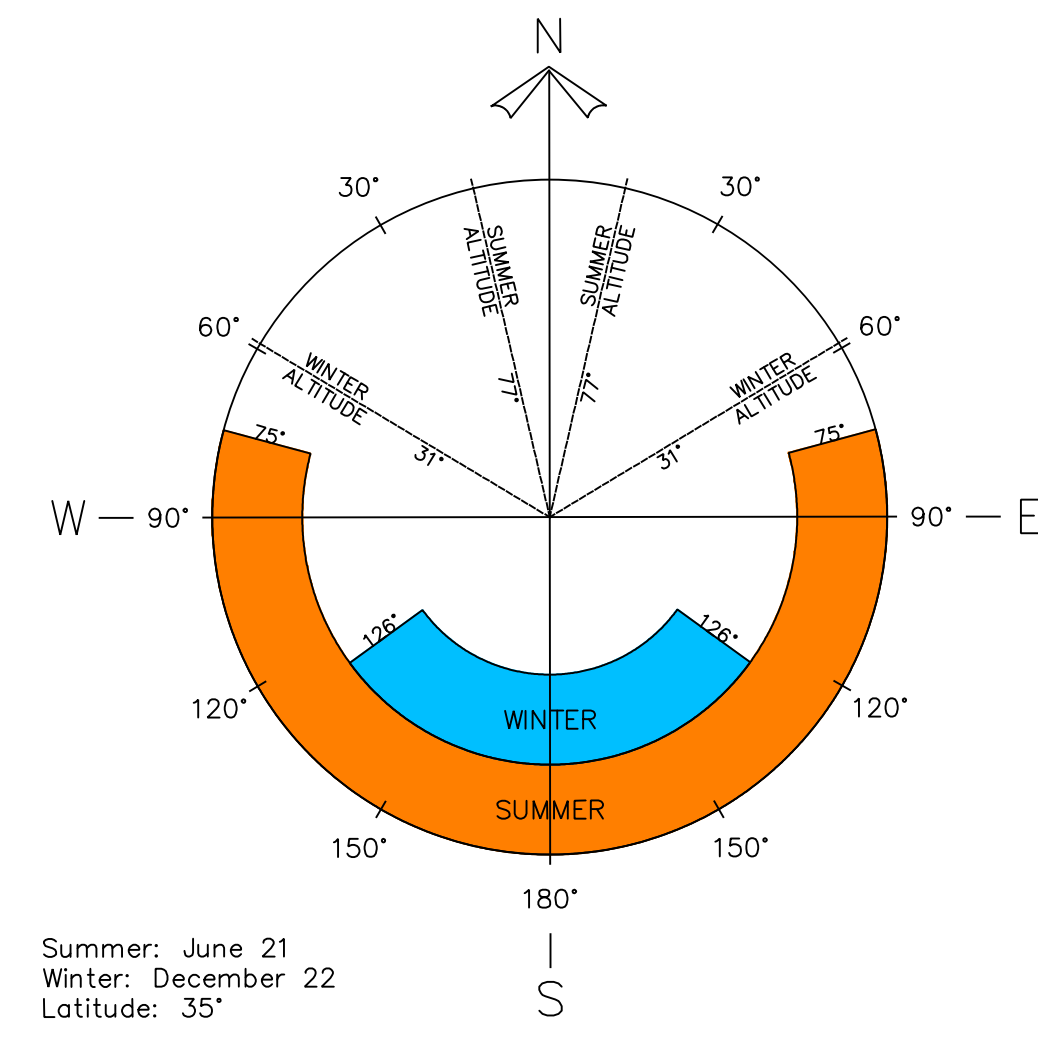
3. Monthly Inspections and condition and Recommendation Reports:

The contractor shall inspect the condition of the plant materials on a monthly basis for 12 consecutive months or throughout the entire warranty period whichever is longer, beginning upon substantial completion and acceptance of the work by the County. The monthly inspections shall continue throughout the entire warranty period. A written report will be submitted to the Peach County Public Works Director no later than five (5) working days after the completion of each inspection. The written report will outline the condition of all plant material, Dates landscape maintenance has taken place, and any warranty replacement actions taken by the contractor during the past month.

4. Re-Scheduled Pre-Bid Meeting and Site Visit

The Pre-Bid meeting and site visit originally scheduled for December 7, 2015 at 9:30 a.m. at the Peach County Regional Workforce Development Center 425 James E. Khoury Blvd. Fort Valley, GA 31030 is re-scheduled for January 6, 2016, 10:30 a.m. local time. Attendance of the pre-bid meeting and site visit is not mandatory, but is recommended.

MASTER PLAN



ZT3 Placemaker Studio, Inc.
Designing Desirable Spaces & Places

urban planning & design
land planning
landscape architecture

EDWOSB FIRM
484 First Street, Suite 1
Macon, Georgia 31201
478-742-0005
www.ZT3placemaker.com

These Documents/Drawings, as instruments of service, are and shall remain the property of this Landscape Architect and shall NOT be reproduced, published or used in anyway without the permission of the Landscape Architect.



NOT RELEASED FOR CONSTRUCTION

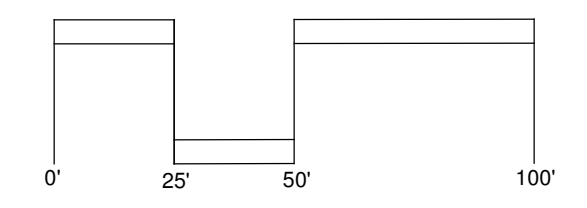
REV. #	DATE	DESCRIPTION
1	12-23-15	Material Reduction

LANDSCAPE PLANTING PLAN
**Peach County Workforce
Development Center**
Peach County Board of Commissioners
Peach County, Georgia

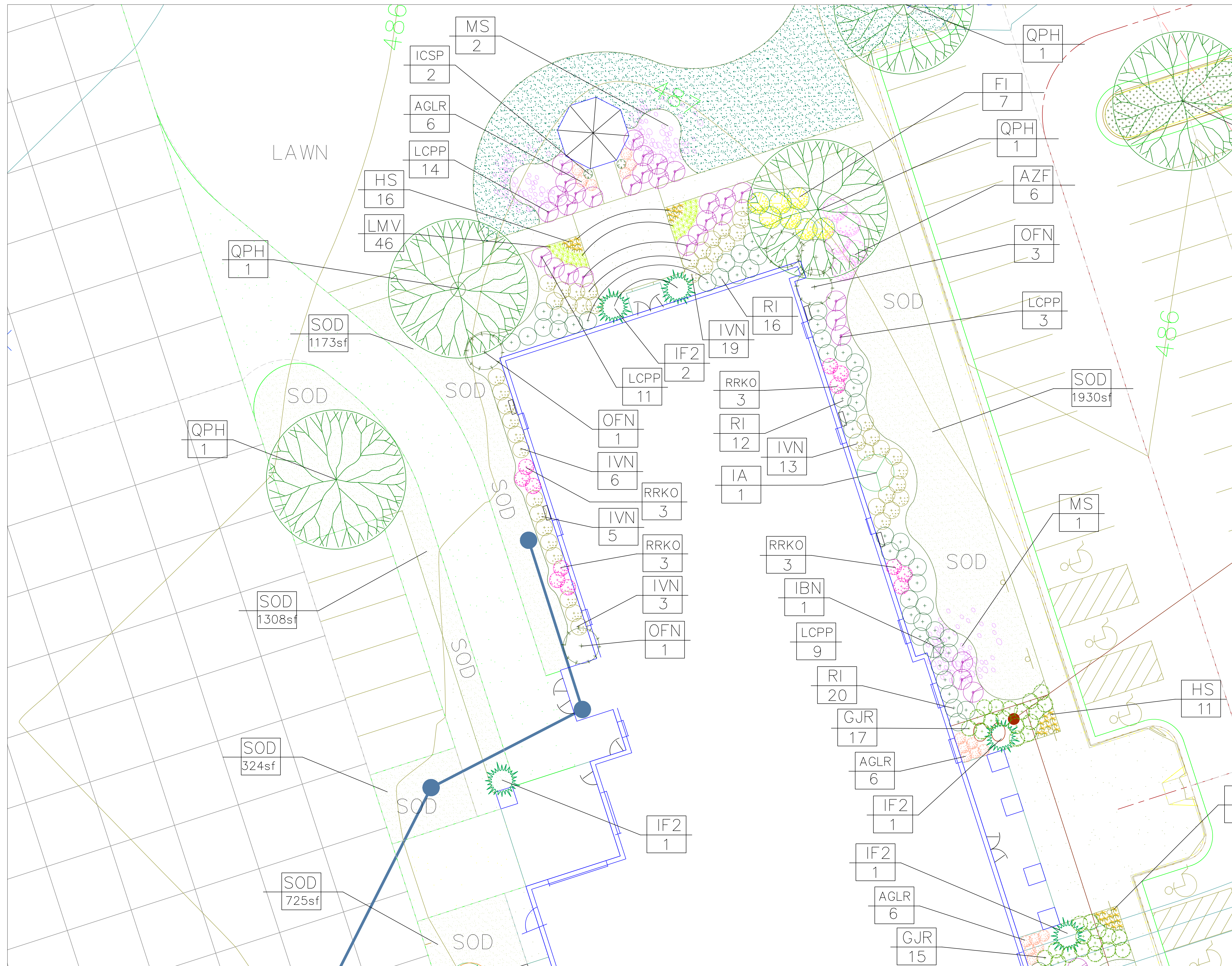
**REVISED
BID SET**

PROJECT NO.	982.03
DATE	05/21/2015
SHEET TITLE	LANDSCAPE PLANTING PLAN MASTER PLAN
CHECKED BY	ZT
SHEET NO.	LA -1

1" = 40'



COPYRIGHT 2015 UNAUTHORIZED USE OF THESE DRAWINGS IS STRICTLY PROHIBITED



BUILDING NORT END 1" = 10'

ZT3 Placemaker Studio, Inc.
Designing Desirable Spaces & Places

urban planning & design
land planning
landscape architecture

EDWOSB FIRM

484 First Street, Suite 1
Macon, Georgia 31201
478-742-0005
www.ZT3placemaker.com

These Documents Drawings, as instruments of service, are and shall remain the property of the Landscape Architect and shall NOT be reproduced, published or used in anyway without the permission of the Landscape Architect.



NOT RELEASED FOR CONSTRUCTION

REVISIONS

REV. #	DATE	DESCRIPTION
1	12-23-15	Material Reduction

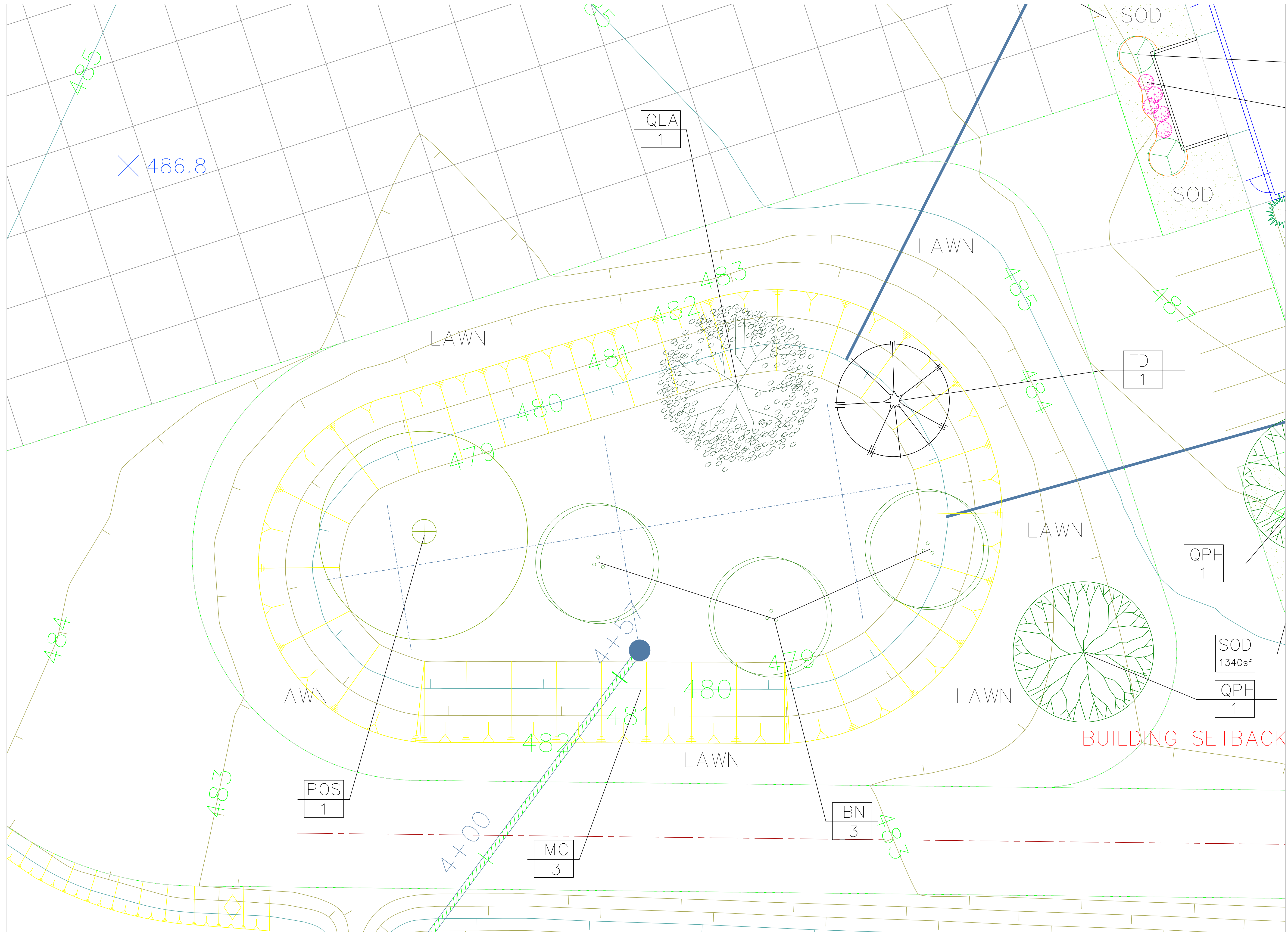
LANDSCAPE PLANTING PLAN
**Peach County Workforce
Development Center**
Peach County Board of Commissioners
Peach County, Georgia

**REVISED
BID SET**

PROJECT NO.	982.03
DATE	05/21/2015
SHEET TITLE	LANDSCAPE PLANTING PLAN BUILDING NORTH END PLAN
CHECKED BY	ZT
SHEET NO.	LA - 2



© COPYRIGHT 2015 UNAUTHORIZED USE OF THESE DRAWINGS IS STRICTLY PROHIBITED



RAINGARDEN/BIORETENTION AREA 1" = 10'

ZT3 Placemaker Studio, Inc.
Designing Desirable Spaces & Places

urban planning & design
land planning
landscape architecture

EDWOSB FIRM

484 First Street, Suite 1
Macon, Georgia 31201
478-742-0005
www.ZT3placemaker.com

These Documents/Drawings, as Instruments of Service, are and shall remain the property of the Landscape Architect and shall NOT be reproduced, published or used in anyway without the permission of the Landscape Architect.



NOT RELEASED FOR CONSTRUCTION

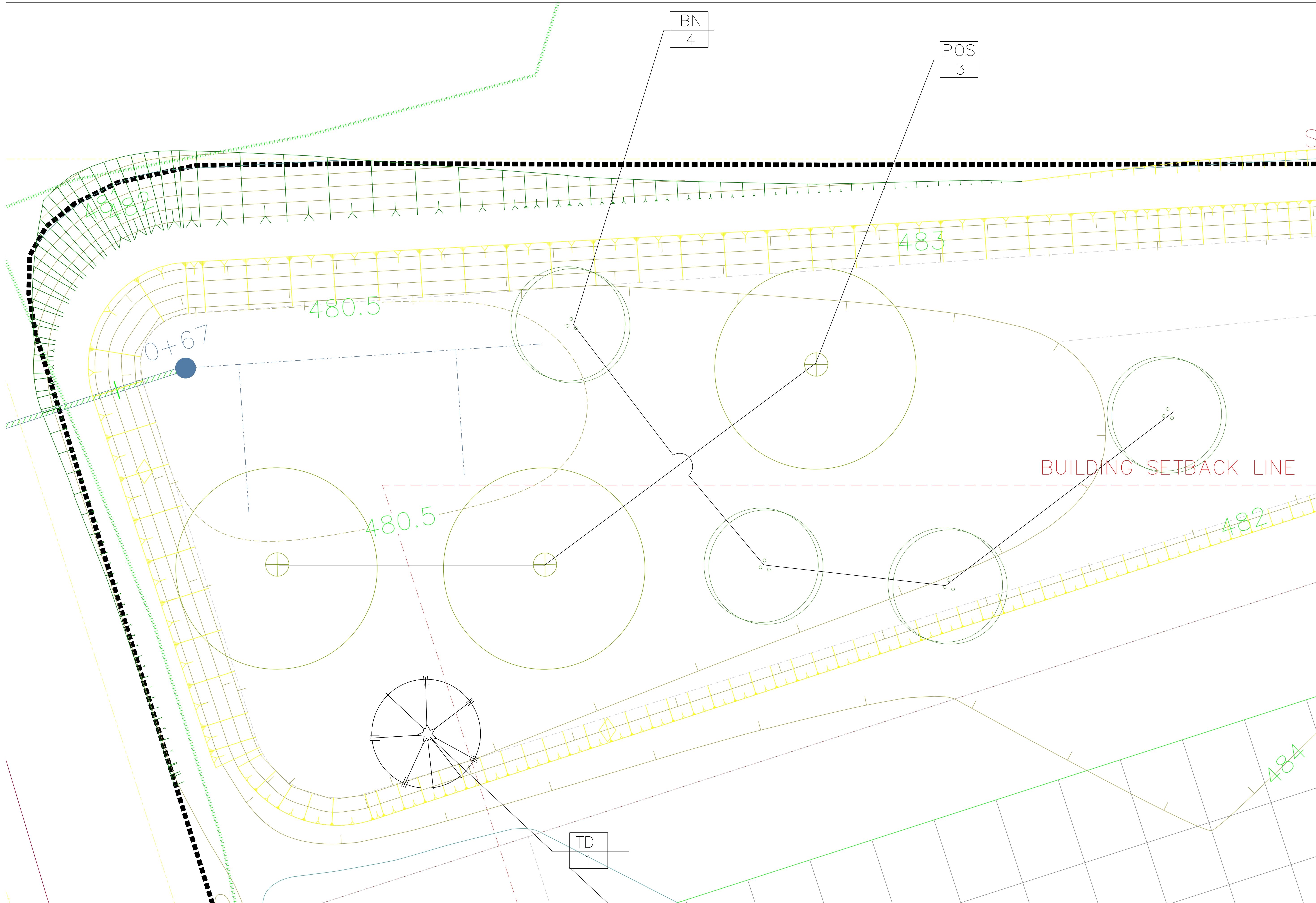
REV. #	DATE	DESCRIPTION
1	12-23-15	Material Reduction

LANDSCAPE PLANTING PLAN
**Peach County Workforce
Development Center**
Peach County Board of Commissioners
Peach County, Georgia

**REVISED
BID SET**

PROJECT NO.	982.03
DATE	05/21/2015
SHEET TITLE	LANDSCAPE PLANTING PLAN Raingarden/Bioretention Pond 1
CHECKED BY	ZT
SHEET NO.	LA -4





RAINGARDEN/BIORETENTION AREA 2 1" = 10'

ZT3 Placemaker Studio, Inc.
Designing Desirable Spaces & Places

urban planning & design
land planning
landscape architecture

EDWOSB FIRM

484 First Street, Suite 1
Macon, Georgia 31201
478-742-0005
www.ZT3placemaker.com

These Documents/Drawings, as instruments of service, are and shall remain the property of the Landscape Architect and shall NOT be reproduced, published or used in any way without the permission of the Landscape Architect.



NOT RELEASED FOR CONSTRUCTION

REVISIONS

REV. #	DATE	DESCRIPTION
1	12-23-15	Material Reduction

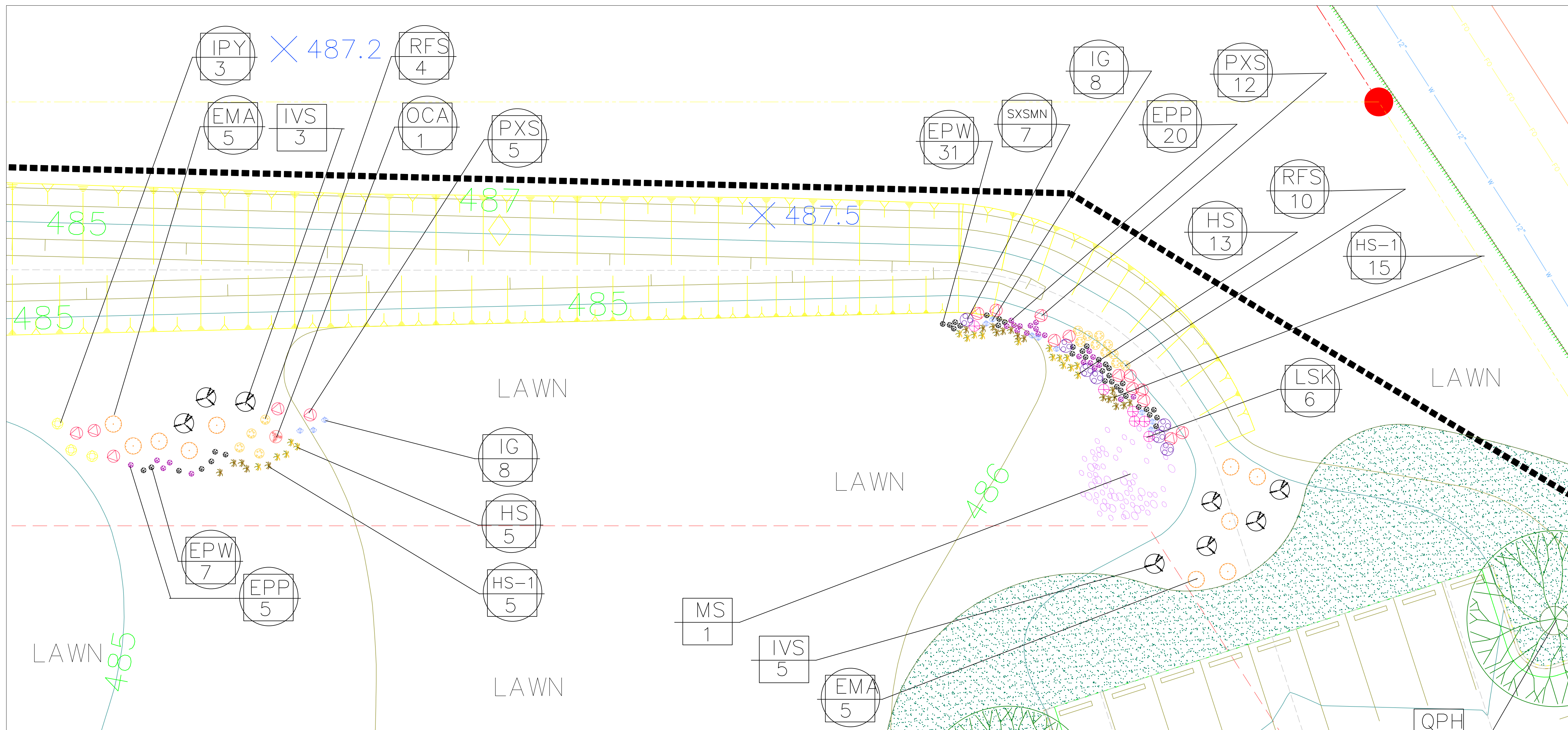
LANDSCAPE PLANTING PLAN
**Peach County Workforce
Development Center**
Peach County Board of Commissioners
Peach County, Georgia

**REVISED
BID SET**

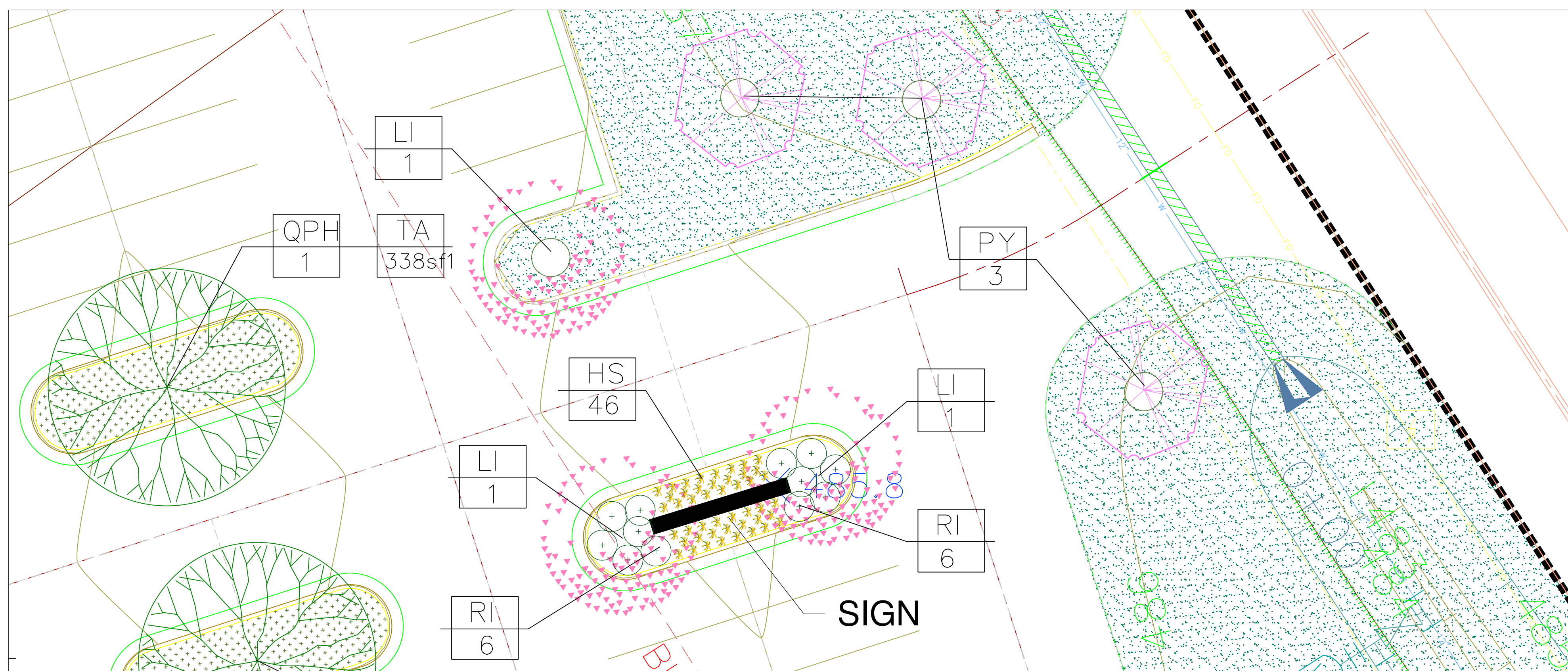
PROJECT NO.	982.03
DATE	05/21/2015
SHEET TITLE	LANDSCAPE PLANTING PLAN Raingarden/Bioretention Pond 2
CHECKED BY	ZT
SHEET NO.	LA-5



© COPYRIGHT 2015 UNAUTHORIZED USE OF THESE DRAWINGS IS STRICTLY PROHIBITED



SPRING GARDENS



ENTRY 1" = 10'

ZT3 Placemaker Studio, Inc.
Designing Desirable Spaces & Places

urban planning & design
land planning
landscape architecture

EDWOSB FIRM

484 First Street, Suite 1
Macon, Georgia 31201
478-742-0005
www.zt3placemaker.com

These Documents Drawings, as instruments of service, are and shall remain the property of the Landscape Architect and shall NOT be reproduced, published or used in any way without the permission of the Landscape Architect.



NOT RELEASED FOR CONSTRUCTION

REVISIONS		
REV. #	DATE	DESCRIPTION
1	12-23-15	Material Reduction

LANDSCAPE PLANTING PLAN
**Peach County Workforce
Development Center**
Peach County Board of Commissioners
Peach County, Georgia

**REVISED
BID SET**

PROJECT NO.	982.03
DATE	05/21/2015
SHEET TITLE	LANDSCAPE PLANTING PLAN Spring Gardens & Entry
CHECKED BY	ZT
SHEET NO.	LA -6



COPYRIGHT 2015 UNAUTHORIZED USE OF THESE DRAWINGS IS STRICTLY PROHIBITED

PLANT SCHEDULE

TREES	QTY	KEY	BOTANICAL NAME	COMMON NAME	SIZE	REMARKS
	0	17-CC	Cercis canadensis	Redbud	1" Caliper	
	0	14-CF-C	Cornus florida 'Cherokee Chief'	Cherokee Chief Dogwood	2" Caliper	White Flower, Well Branched, Full Form
	0	9-ICS	Ilex cornuta 'Sizzler'	Sizzler Holly	6-7' HT.	Tree Form
	6	IF2	Ilex opaca attenuata 'Fosteri'	Foster's Holly	5-6' HT- 8'	Full Form, Straight Trunk Full to GND
	3	8-LAINSF	Lagerstroemia indica 'Carolina Red'	Carolina Red Crape Myrtle	8-10' Ht. 8' HT	Multi-trunk, tree form
	5	7-MS	Magnolia soulangiana	Saucer Magnolia	6-8' Ht.	Multi-trunk well branched sub OF 5' HT
	3	18-MC	Myrica cerifera	Wax Myrtle	4-5' Ht.	
	0	21-QC	Quercus georgiana	Georgia Oak	15 Gallon	Nearly Native Nursery
	0	14-AR	Acer rubrum	Red Maple	2" Caliper	Park Grade
	7	9-BN	Betula nigra Dura Heat -ok	River Birch	26 Caliper HT	Single Trunk Multi trunk -ok
	3	CAG	Cupressus arizonica glabra 'Carolina' *	Carolina Sapphire *	6-8' Ht.	Full Round Shape Branched to Ground
	0	13-PT	Pinus taeda	Loblolly Pine	3-4' Ht.	Straight Trunk
	4	7-POS	Platanus occidentalis **	Sycamore or American Plane Tree **	2.5" Caliper	Straight Trunk
	2	3-QLA	Quercus laurifolia ***	Laurel Oak ***	3" Caliper	specimen, well branched, full
	16	23-QPH	Quercus phellos ***	Willow Oak ***	4" Caliper	uniform, well branched, see spec.
	0	5-QSS	Quercus shumardi	Shumard Oak	3" Caliper	uniform, well branched, see spec.
	4	5-PY	Prunus yedoensis	Yoshino Cherry	3.5" Caliper	Well Branched Full Form
	5	4-TD	Taxodium distichum	Bald Cypress	2.5" Caliper	Well Branched Full Form

* Approved Substitutions, Emily Bruner Holly 6' HT.
 ** Approved Substitutions, Tulip Poplar 3' Cal.
 *** Approved Substitutions, Shumard Oak or Overcup Oak same size

SHRUBS	QTY	KEY	BOTANICAL NAME	COMMON NAME	SIZE	REMARKS
	43	59-AGLR	Abelia grandiflora 'Little Richard'	Little Richard Abelia	5 Gal. 3	
	7	33-FI	Forsythia intermedia	Border Forsythia	5 Gal.	
	32	75-GJR	Gardenia jasminoides radicans	Dwarf Gardenia	3 Gal.	2 Gal. ok
	1	IBN	Ilex cornuta "Burfordii Nana"	Dwarf Burford Holly	5 Gal.	
	6	ICSP	Ilex crenata 'Sky Pencil'	Sky Pencil Holly	3 Gal.	
	73	288-IVN	Ilex vomitoria "Nana"	Dwarf Yaupon Holly	3 Gal.	
	5	IA	Illicium anisatum	Anise	7 Gal.	
	6	22-AZF	Indica Azalea 'Formosa'	Formosa Southern Azalea	3 Gal.	Rose Purple Flower
	8	19-IVS	Itea virginica	Virginia Sweetspire	5 Gal. 3	
	57	134-LOPP	Loropetalum chinense 'Purple Pixie'	Purple Pixie Loropetalum	3 Gal.	
	5	7-OFN	Osmanthus fragrans	Fragrant Tea-olive	7 Gal. 5	
	10	460-RI	Raphiolepis indica	Indian Hawthorn	3 Gal.	Full Rich Color
	23	52-RRKO	Rosa 'Radrazz'	Knock Out Rose	7 Gal. 5	Full Well Branched

GROUNDCOVERS	QTY	KEY	BOTANICAL NAME	COMMON NAME	SIZE	REMARKS
			SOD	Cynodon dactylon Sahara	Bermudagrass Sahara	419 thick no weeds
	0	77-FC	Festuca cinerea	Silver Fescue	1 Gallon	
	120	86-LMV	Liriope muscari 'Variegata'	Variegated Liriope	1/4 Gallon	
	1	14-OCA	Osmunda cinnamomea	Cinnamon Fern	1 Gallon	
	5,525	SF-TA	Trachelospermum asiaticum	Asiatic Jasmine	Sprig./pint	Space 15" O.C.
	1,690	SF				
	9,428	SF-SOD	Zoysia japonica x	Emerald Zoysia Grass	SOD	
	35,376	SF-SOD2	Bermuda Improved Variety	Bermuda Mohawk	SOD	Sahara, 419 approved opt
	5,000	SF	seed Love Grass with Fiber Mat in Pond area			

FLOWERS	QTY	KEY	BOTANICAL NAME	COMMON NAME	SIZE	REMARKS
	25	44-EPP	Echinacea purpurea	Purple Coneflower	Pint	
	38	69-EPW	Echinacea purpurea "Alba"	White Purple Coneflower	Pint	
	10	65-EMA	Eupatorium maculatum "Atropurpureum"	Joe-Pye Weed	Gallon	
	20	80-HS-1	Hemerocallis x "Orange"	Orange Daylily	Bare Root	
	127	132-HS	Hemerocallis x "Stella de Ore"	Stella de Ore Daylily	Bare Root	
	11	24-IG	Iris germanica	German & Bearded Iris	Gallon	
	3	40-IPY	Iris pseudacorus	Yellow Flag Iris	Gallon	
	6	13-LSK	Listris spicata 'Kobold'	Kobold Gay Feather	Gallon	
	1	14-OCA	Osmunda cinnamomea	Cinnamon Fern	Bare Root	
	17	30-PXS	Phlox x 'Starfire'	Starfire Phlox	Pint	
	14	116-RFS	Rudbeckia fulgida speciosa	Blackeye Susan	Pint	
	7	11-SXS-MN	Salvia x sylvestris 'May Night'	May Night Salvia	Pint	

NOTES

- CONTRACTOR SHALL MAKE NECESSARY SITE INSPECTIONS PRIOR TO BIDDING &/OR LANDSCAPE OPERATIONS TO FAMILIARIZE HIMSELF WITH SITE CONDITIONS.
- PLANT MATERIAL SPECIFICATIONS SHOWING SIZE AND SPREAD OF MATERIAL SHALL BE ADHERED TO REGARDLESS OF CONTAINER SIZE. SIZE & SPREAD SHALL ALWAYS RULE OVER CONTAINER SIZE EXCEPT WHERE NO SIZE IS INDICATED. WHEN CONTAINER SIZES ARE SHOWN THEY SHALL BE FULL CONTAINERS, RATHER THAN RECENTLY "TRUMPED" MATERIAL. LANDSCAPE ARCHITECT WILL INSPECT ALL PLANTS AND ANY DETERMINED BY LANDSCAPE ARCHITECT TO BE "BUMPED" WILL HAVE TO BE REPLACED AT CONTRACTOR'S COST.
- THE LANDSCAPE PLAN IS TO SERVE AS A GUIDE TO PLANTING. MINOR ADJUSTMENTS MAY BE REQUIRED IN THE FIELD.
- PLANT LOCATIONS ARE SUBJECT TO CHANGE BY LANDSCAPE ARCHITECT AND/OR OWNER. ALL PLANTS AND INSTALLATION ARE SUBJECT TO APPROVAL BY LANDSCAPE ARCHITECT.
- IN THE EVENT OF VARIATION BETWEEN QUANTITIES SHOWN ON THE PLANT LIST AND THE PLANS, THE PLANS SHALL CONTROL. UNLESS OTHERWISE SPECIFIED, PLANTS SHALL BE PLANTED IN THE MANNER AND QUANTITY SHOWN ON THE PLANS. PLANTS SHALL BE PLANTED IN THE MANNER AND QUANTITY SHOWN ON THE PLANS. PLANTS SHALL BE PLANTED IN THE MANNER AND QUANTITY SHOWN ON THE PLANS.
- NO SUBSTITUTIONS SHALL BE MADE WITHOUT WRITTEN CONSENT OF THE OWNER AND LANDSCAPE ARCHITECT OR THE LANDSCAPE ARCHITECT WHO'S SEAL IS AFFIXED TO THESE DOCUMENTS.
- ALL PLANTING BEDS SHALL RECEIVE 3" DEPTH OF PINE STRAW MULCH EXCEPT WHERE DIRECTED BY LANDSCAPE ARCHITECT. ALL WOOD PLANTS, NONE GRASSED AREAS SHALL RECEIVE 2" COVER OF PINE STRAW. WHERE CYPRESS CHIPS ARE SPECIFIED, THEY SHALL BE CLEAN AND OF NATURAL COLOR AT A DEPTH OF 3" MINIMUM. KEEP ALL MULCH 6" FROM ALL TREE TRUNKS.
- ALL BED LINES SHALL BE 3" V-SHAPED TRENCH.
- ALL PLANTINGS SHALL BE BACKFILLED WITH A MIXTURE OF 3/4 TOPSOIL AND 1/4 PEAT.
- TOPSOIL MATERIAL SHALL BE FREE FROM HARD GLOBS, STIFF CLAY, HARD PAN, STONES LARGER THAN 1" IN DIAMETER, NOXIOUS WEEDS AND PLANTS, SOIL, PARTIALLY DISINTEGRATED DEBRIS, INSECTS, OR ANY OTHER UNSUITABLE MATERIAL. PLANTS, OR SEEDS THAT WOULD BE TOXIC OR HARMFUL TO GROWTH. TOPSOIL SHOULD BE FERTILE, FRAGILE, AND OF A NATURALLY LOAMY CHARACTER WITHOUT ADMIXTURE OF SUBSOIL MATERIAL, OBTAINED FROM A WELL DRAINABLE SITE.
- CAUTION SHALL BE EXERCISED TO AVOID SETTLEMENT OF PLANT MATERIAL IN SOFT OR FILL AREAS.
- IT SHALL BE THE LANDSCAPE CONTRACTOR'S RESPONSIBILITY TO PREVENT PLANTS FROM FALLING OR BEING BLOWN OVER, AND TO STRAIGHTEN OR REPLANT ALL PLANTS WHICH ARE DAMAGED DUE TO LACK OF GUYING OR STAKING. IF UNGUYED, PLANTS BLOWN OVER BY HIGH WINDS SHALL NOT BE A CAUSE OF ADDITIONAL EXPENSE TO OWNER, BUT SHALL BE THE FINANCIAL RESPONSIBILITY OF THE LANDSCAPE CONTRACTOR. GUYED TREES BLOWN OVER BY WINDS IN EXCESS OF 50 MPH PER HOUR SHALL NOT BECOME THE FINANCIAL RESPONSIBILITY OF THE LANDSCAPE CONTRACTOR.
- DURING THE COURSE OF THIS WORK, EXCESS WASTE MATERIAL SHALL BE REMOVED DAILY FROM THE SITE AND UPON COMPLETION OF ALL WORK, THE CONTRACTOR SHALL LEAVE THE SITE CLEAN AT ALL TIMES.
- UPON COMPLETION OF ALL LANDSCAPING AN INSPECTION FOR ACCEPTANCE OF THE WORK SHALL BE HELD. THE LANDSCAPE CONTRACTOR SHALL NOTIFY THE LANDSCAPE ARCHITECT FOR SCHEDULING THE INSPECTION AT LEAST TEN (10) DAYS PRIOR TO THE ANTICIPATED INSPECTION DATE.
- THE LANDSCAPE CONTRACTOR IS HEREBY NOTIFIED OF THE EXISTENCE OF UNDERGROUND UTILITIES ON THE SITE. THEIR EXACT LOCATION SHALL BE VERIFIED IN THE FIELD PRIOR TO THE COMMENCEMENT OF ANY DIGGING OPERATIONS. IN THE EVENT ANY ARE UNCOVERED, THE LANDSCAPE CONTRACTOR SHALL PROMPTLY NOTIFY THE OWNER AND LANDSCAPE ARCHITECT. THE LANDSCAPE CONTRACTOR SHALL BE HELD RESPONSIBLE FOR REPAIR AND /OR REPLACEMENT.
- TREES LISTED AS OWNER PURCHASE WILL BE PURCHASED WITH FIVE YEAR GUARANTEE BY GROWER. LANDSCAPE CONTRACTOR WILL BE RESPONSIBLE FOR SHIPPING ARRANGEMENTS AND SHIPPING COST FROM THE GROWER'S SITE TO THE PROJECT SITE. LANDSCAPE CONTRACTOR MUST UNLOAD ALL TREES IN ACCORD WITH THE REQUIREMENTS OF THE GROWER FOR FIVE YEAR GUARANTEE. TREES WILL BE SUBJECT TO MONITORING BY CONTRACTOR FOR THE FIVE YEAR PERIOD AND INSPECTION FORMS MUST BE SUBMITTED TO LANDSCAPE ARCHITECT FOR APPROVAL. FOLLOW ALL REQUIREMENTS OF THE SELECT TREE WARRANTY.

NOTE ALL TREE PLANTING:
 EACH TREE MUST BE PLANTED SUCH THAT THE TRUNK FLARE IS VISIBLE AT THE TOP OF THE ROOT BALL. TREES WHERE THE TRUNK FLARE IS NOT VISIBLE SHALL BE REJECTED. DO NOT COVER THE TOP OF THE ROOT BALL WITH SOIL.

IF TREE IS SHIPPED WITH A WIRE BASKET AROUND THE ROOT BALL, CUT THE WIRE BASKET AND REMOVE THE UPPER 1/3 OR MINIMUM 8" FROM TOP.

REVISED PLAN NOTES:

LAWN NOTE: APPLY FERTILIZE AND WEED CONTROL - USE WHAT IS THERE AND RESEED AS NEEDED TO HAVE FULL GRASS COVERAGE. HYDRO SEED APPLICATION RECOMMENDED.
SOD2: PLANT IN SPRING AFTER APPLYING ROUNDUP TO ACTIVELY GROWING EROSION CONTROL GRASS. 2 APPLICATIONS REQUIRED AT TWO WEEK INTERVAL.

TREE ISLAND NOTE: DO NOT PLANT ASIATIC JASMINE UNTIL SPRING AND EXISTING EROSION CONTROL GRASS ARE ACTIVELY GROWING. THEN APPLY ROUND-UP, WAIT 2 WEEKS APPLY SECOND APPLICATION OF ROUND-UP. ONCE ALL EROSION CONTROL GRASS IS DEAD PLANT ASIATIC JASMINE. MAY NEED TO MULCH ISLANDS IN THE MEAN TIME. CONTRACTOR TO MAINTAIN & CONTROL WEEDS FOR ONE YEAR.

SELECT TREES WARRANTY REQUIREMENTS FOR CONTRACTOR

CONTRACTOR SHALL FOLLOW ALL INSTRUCTIONS INCLUDING ANY UPDATES PROVIDED AT TIME OF DELIVERY.

- UNLOADING, HANDLING, AND STAGING
 - STAGING SYSTEMS SHOULD BE PREPARED IN ADVANCE TO ADEQUATELY HOLD TREES ABOVE GROUND FOR OPTIMUM TREE HEALTH PRIOR TO PLANTING. MANY TIMES, EVEN WITH THE BEST PLANNING & COORDINATION, TREES CANNOT BE PLANTED WHEN THEY ARE DELIVERED.
 - USE EXTREME CAUTION WHEN HANDLING TREES. USE A STRAP CRADLE (ADEQUATE FOR WEIGHT AND SIZE OF ROOT BALL) ATTACHED TO THE ROOT BALL TO UNLOAD A MOVE TREES. STRAPPING & WIRE BASKETS CAN BREAK OR LOOSEN, NEVER MOVE, LIFT, OR HANDLE BY ATTACHING TO OR BY PUTTING PRESSURE ON THE TRUNK. BE VERY CAREFUL NOT TO DAMAGE OR SCAR TRUNKS & BRANCHES.
 - PRIOR TO UNLOADING, PROPER MOISTURE SHOULD BE MAINTAINED IN ROOT BALLS. TRUCKS SHOULD BE STAGED IN THE SHADE PRIOR TO UNLOADING. UNLOADING TIME SHOULD BE NO MORE THAN TWO HOURS PER TRUCK.
 - IMMEDIATELY AFTER UNLOADING (NO MORE THAN ONE HOUR AFTER UNLOADING) STAND THE TREES UP. THIS WILL REDUCE THE RISK OF SUN SCALD. PROPERLY STAGED TREES ARE STANDING, UNLIFTED, SPACED.
 - REMOVE THE CARDBOARD TRUNK PROTECTOR WITHIN 48 HOURS OF TREES BEING STOOD UPRIGHT TO REDUCE THE RISK OF DAMAGE.
 - MONITOR MOISTURE IN THE ROOT BALL BY PROBING WITH A SOIL PROBE & MANAGE SUPPLEMENTAL IRRIGATION ACCORDINGLY. BE CAREFUL NOT TO OVER OR UNDER IRRIGATE.
 - DURING COLD WEATHER PERIODS, ROOT BALLS MUST BE PROTECTED FROM FREEZING TEMPERATURES.
- PLANTING
 - BEFORE PLANTING, REMOVE ANY PLASTIC WRAP & ANY CIRCLING STRAPS FROM THE ROOT BALL. HANDLE TREE ONLY BY ROOT BALL & BE CERTAIN YOUR EQUIPMENT, INCLUDING STRAP & CHAIN CRADLES ARE RATED FOR THE WEIGHT YOU ARE LIFTING.
 - EXCAVATE PLANTING HOLE AT LEAST TWO TIMES THE DIAMETER & 2" SHALLOWER THAN THE ROOT BALL.
 - WHENEVER POSSIBLE A TELEHANDLER WITH SIDE TILT CARRIAGE FORKS (BRANDS SUCH AS LULL OR JLG) MACHINE RATED TO HANDLE WEIGHTS OF ROOT BALLS AND TREES SHOULD BE USED TO SET ROOT BALLS IN PLANTING PITS. FORKS SHOULD ALWAYS BE CAREFULLY POSITIONED ABOVE ROOT BALL TO LET ROOT BALL BY STRAPPING ON TOP OF THE ROOT BALL WITH FOUR PICK UP POINTS FOR EVEN WEIGHT DISTRIBUTION. PRIOR TO SETTING ROOT BALL IN PLANTING PIT, FORKS SHOULD BE ADJUSTED SO THAT TREE IS PLUMB. PLACE ROOT BALL AT A LEVEL WHERE THE TRUNK FLARE WILL BE 2" ABOVE SURROUNDING FINISHED GRADE AFTER SETTLING.
 - SATURATE THE PLANTING HOLE WITH WATER AFTER BACKFILL IS 1/2 COMPLETE TO AID REMOVAL OF AIR FROM BACKFILL.
 - AFTER INITIAL BACKFILL, WATERING, & THE TREE IS PLUMB, THEN ADD BACKFILL TO JUST BELOW THE TOP HORIZONTAL RING OF THE WIRE BASKET, COMPLETELY SATURATE PLANTING HOLE. ADJUST ROOT BALL (IF NECESSARY) BY ADJUSTING FORKS TO MAKE TREE STRAIGHT & PLUMB AND AT PROPER DEPTH.
 - IF FOR ANY REASON TREES NEED STRAIGHTENING, TREES CAN BE STRAIGHTENED BY CAREFULLY DIGGING OUT AROUND THE ROOT BALL, ATTACHING STRAP TO PART OF THE WIRE BASKET THAT IS STILL INTACT AROUND THE ROOT BALL, AND LIFTING, NEVER PULL, PUSH OR PUT PRESSURE ON THE TRUNK (REFER TO ACTIONS B.3-B.10 FOR INFORMATION TO COMPLETE THIS PROCESS). IF TREE ROOTS ARE SIGNIFICANTLY ESTABLISHED IN BACKFILL, IT IS BEST FOR THE HEALTH OF THE TREES TO WAIT UNTIL DORMANCY TO STRAIGHTEN TREES. STAKING SHOULD BE RE-ADJUSTED AFTER STRAIGHTENING TREES.
 - AFTER ABOVE ITEMS HAVE BEEN COMPLETED AND TREE IS PLUMB WITH ROOT BALL AT PROPER DEPTH, GENTLY REMOVE FORKS AND ALSO REMOVE: A. THE SYNTHETIC WIRE B. ANY CARDBOARD PACKAGING, C. THE TOP PORTION OF THE WIRE BASKET DOWN TO INCLUDE THE FIRST HORIZONTAL RING. D. THE BURLAP FROM THE PORTION OF THE ROOT BALL.
 - COMPLETE THE BACKFILL & THOROUGHLY SATURATE WITH WATER. REPEAT THIS STEP IF NECESSARY TO MAKE ABSOLUTELY CERTAIN THAT AIR POCKETS DO NOT EXIST IN THE BACKFILL.
 - IMMEDIATELY AFTER BACKFILL HAS SETTLED & THE TREE IS STRAIGHT & PLUMB, STAKE TREE TO PROVIDE STABILITY UNTIL ROOT SYSTEM IS THOROUGHLY ESTABLISHED IN THE BACKFILL. CHECK STAKING AS NEEDED TO MAKE SURE TRUNK DAMAGE DOES NOT OCCUR. CHECK TO CONFIRM THAT TREE & ROOT BALL IS STABLE BEFORE REMOVING.
 - MULCH THE AREA OVER THE ROOT BALL TO A DEPTH NO DEEPER THAN 1 1/2" TO 2", KEEP ALL MULCH AWAY FROM TRUNK FLARE.
 - POST-PLANTING CARE AVAILABLE FROM SELECT TREES
 - MULCH THE AREA OVER THE ROOTBALL TO A DEPTH NO DEEPER THAN 3". KEEP ALL MULCH AWAY FROM THE TRUNK FLARE. BARK TISSUE THAT IS IN CONTACT WITH MULCH IS LIKELY TO SOFTEN AND TO ATTRACT INSECTS AND DISEASE. REMOVE ANY OLD MULCH BEFORE APPLYING NEW MULCH.
 - SOIL MOISTURE - "TREE MAINTENANCE SPREADSHEET" (AVAILABLE FROM ZTS OR SELECT TREE) SHOULD BE UPDATED DURING FIRST TWO GROWING SEASONS, (APRIL 1 THROUGH OCTOBER 30) AND BE SUBMITTED TO LANDSCAPE ARCHITECT FOR REVIEW PRIOR TO SUBMITTAL TO SELECT TREES. SUBMITTAL TO SELECT TREES SHALL BE MADE WITHIN TWO BUSINESS DAYS. MONITOR MOISTURE IN THE ROOTBALL AND BACKFILL BY TAKING A CORE SOIL SAMPLE WITH A SOIL PROBE & MANAGE SUPPLEMENTAL IRRIGATION ACCORDINGLY. BE CAREFUL NOT TO OVER OR UNDER IRRIGATE. NOTE: TREES WILL NOT THRIVE AND WILL OFTEN DIE IN SATURATED SOILS. IRRIGATION SHOULD BE IMMEDIATELY STOPPED ON ALL TREES WITH EXCESS SOIL MOISTURE & RESTART ONLY WHEN SOIL PROBE INDICATES WATER IS NEEDED. TREES WITH EXCESS SOIL MOISTURE SHOULD BE MONITORED AND TREATED DAILY. SUBSURFACE DRAINAGE MAY BE REQUIRED TO CREATE PROPER SOIL MOISTURE. WHEN SOIL PROBING INDICATES THAT ROOTBALLS ARE IN NEED OF WATER, TREGATOR BAGS CAN BE ADDED IMMEDIATELY TO ALLOW FOR SLOW APPLICATION OF WATER. TREGATOR BAGS SHOULD NOT STAY ON THE TRUNK LONG ENOUGH TO SOFTEN TRUNK TISSUE OR TO PROVIDE A HAVEN FOR PESTS. TREGATOR BAGS SHOULD BE REMOVED APPROXIMATELY EVERY 8-10 DAYS FOR A PERIOD OF 1 TO 2 DAYS. IF PRACTICAL, THE BEST TIMES TO REMOVE TREGATOR BAGS ARE DURING CLOUDY OR RAINY WEATHER. THIS WILL MINIMIZE RISK OF SUNSCOLD DAMAGE. WHILE THE TREGATOR BAGS ARE OFF THE TREE, ALTERNATE METHODS OF APPLYING WATER SHOULD BE USED IF NEEDED.
 - IF YOUR TREGATOR BAGS ARE NOT DRAINING PROPERLY, TRY THESE RECOMMENDATIONS: FIRST-BE CERTAIN THAT WHILE FILLING THE PRODUCT TO APPROXIMATELY 1/4 CAPACITY LIFT UP GENTLY ON THE STRAPS AT THE TOP OF THE BAG. DOING SO ENSURES THAT THE WATER RELEASE HOLES ARE IN THE CORRECT POSITIONS EACH TIME THE BAG IS FILLED. SOMETIMES A TREGATOR JUST NEEDS TO BE RESET, ESPECIALLY IF IT HAS BEEN LEFT IN A STATIC POSITION FOR AN EXTENDED PERIOD OF TIME. TO RESET YOUR TREGATOR BAG EMPTY ANY REMAINING WATER FROM THE BAG (BE SURE TO HOLD THE TWO SIDES TOGETHER AS THE BAG IS UNZIPPED TO PREVENT DAMAGE TO THE ZIPPERS). THEN, LAY THE BAG FLAT AND SMOOTH OUT ANY WRINKLES OR KINKS THAT MAY HAVE FORMED. THEN ZIP UP AROUND TRUNK, FILL WITH WATER AND LET EMPTY. IF THE BAG STILL WILL NOT DRAIN, TRY CLEANING THE RELEASE HOLE LOCATIONS. CHECK THE HOLES TO MAKE SURE THERE IS NO DEBRIS COVERING THEN UP. WHEN FULL, RELEASE HOLES ARE LOCATED UNDERNEATH EACH CORNER OF THE BAG. CHECK TO SEE IF THEY ARE CLOGGED BY GENTLY LIFTING UP EACH CORNER UNTIL YOU CAN SEE THE WATER RELEASE HOLE LOCATIONS.
 - STAKING-COMPLETELY REMOVE ALL STAKING SYSTEMS AT THE APPROPRIATE TIME TO PREVENT TRUNK & STEM DAMAGE.
 - PESTS-TREES SHOULD BE MONITORED FOR BORING INSECTS FOR THE FIRST YEAR AFTER INSTALLATION. PREVENTIVE PESTICIDE APPLICATIONS ARE RECOMMENDED DURING THE ESTABLISHMENT PERIOD.
 - STRAIGHTENING TREES-REFER TO SECTION B.7.
 - NUTRITION-MONITOR NUTRITION AS NEEDED BY ANALYZING SOIL AND/OR TISSUE SAMPLES.

ZTS Placemaker Studio, Inc.
 Designing Desirable Spaces & Places

urban planning & design
 land planning
 landscape architecture

EDWOSB FIRM

484 First Street, Suite 1
 Macon, Georgia 31201
 478-742-0005
 www.ZTSplacemaker.com

These Documents/Drawings, as instruments of service, are and shall remain the property of the Landscape Architect and shall NOT be reproduced, published or used in anyway without the permission of the Landscape Architect.



NOT RELEASED FOR CONSTRUCTION

REV. #	DATE	DESCRIPTION
1	12-23-15	Material Reduction

LANDSCAPE PLANTING PLAN
Peach County Workforce Development Center
 Peach County Board of Commissioners
 Peach County, Georgia

REVISED BID SET

PROJECT NO.	982.03
DATE	05/21/2015
SHEET TITLE	

LANDSCAPE PLANTING PLAN
 Plant Schedule & Notes

CHECKED BY	ZT
SHEET NO.	LA-7



SPECIFICATIONS

Section 1-A PLANTING OF TREES AND SHRUBS

A. GENERAL

1. SCOPE OF WORK

All labor, materials and equipment required by or inferred from drawings and specifications to complete all of the landscaping and planting as shown on the drawings. Before commencing any work required under the contract, the Contractor shall find the location of all utilities, subsurface drainage and underground construction so that proper precautions may be taken not to disturb or damage any subsurface improvements.

2. APPLICABLE SPECIFICATIONS AND STANDARDS

- Standardized Plant Names, latest edition committee on Horticultural Nomenclature.
- American Standard for Nursery Stock, 1980 Edition American Association of Nurserymen.

3. APPROVAL AND SELECTION OF MATERIALS AND WORK

The selection of all materials and the execution of all operations required under the specifications and drawings shall be subject to the approval of the Landscape Architects. They shall have the right to reject any and all materials and any and all work which, in their opinion, does not meet the requirements of the contract documents at any stage of the operations. All rejected materials shall be removed from the site by the Contractor.

B. MATERIALS

1. PLANTS

Specific requirements concerning the various species and the manner in which they are to be furnished are shown on the drawings and plant list.

- Quality and Size.** Plants shall be nursery-grown, freshly dug, normally shaped, and well-branched; full foliated when in leaf and shall have healthy, well-developed root systems. Trees must be self supporting, with straight trunks and with leaders intact. All plants furnished shall be free of any insect infestations or their eggs, and shall have been grown under climatic conditions with temperature extremes similar to those of the locality of the project for a minimum of two years prior to use on this project. All plants shall be true to species and variety. Plants used where symmetry is required shall match as nearly as possible. No substitutions shall be permitted without written permission of the Landscape Architect.
- The Contractor shall submit for approval by the Landscape Architect, his sources for the various plant materials proposed. Photographs of the actual plant materials may be requested at the option of the Landscape Architect, a visit to these supply sources may be demanded for the purpose of close inspection and/or personal selection of the proposed material by the Landscape Architect.
- Stock furnished in the size range specified shall be interpreted to mean that not less than 50% shall be of the maximum size specified within each range.
- The determining measurements for trees shall be the caliper, height and spread. Caliper shall be taken 6" above the ground for trees up to 4" caliper and 12" above the ground for larger sizes. Height and spread dimensions specified refer to the main body of the plant. Take measurements with branches in normal position.
- Plants larger in size than those specified may be used with approval of the Landscape Architect at no additional cost to the Owner. If the use of larger plants is approved, the ball of earth or spread of roots shall be increased proportionately. Woody and leggy plants shall not be accepted.
- Container grown plants in cans or wooden boxes of equal quality, as balled and burlapped plants, may be substituted in lieu thereof. Plants grown in containers shall be delivered and remain in containers in a shady location until planted. Plants in containers shall be watered prior to transportation and shall be kept moist until planted. The container must be removed prior to planting, care being exercised so as not to injure the plant roots.

- Burlap for wrapping earth ball shall be made of jute and weigh not less than 7.2 oz. per square yard.
- Peat, Reed peat, sedge peat, or moss peat at option of Contractor. Furnish air-dried, finely shredded and suitable for horticultural purposes. Its pH value shall be between 5.5 and 6.5 and it shall contain no more than 35% moisture by weight.
- Pine Straw: shall be clean, fresh color and free of branches and foreign matter. A weed prevention chemical shall be installed under mulch. Color - Natural.
- Commercial fertilizer shall be a complete fertilizer. 50% of the nitrogen of which is derived from natural organic sources or ureaform. It shall be delivered to the site in standard size, unopened containers, showing weight, analysis and name of manufacturer. It shall be stored in a weathertight storage in such a manner that it will be kept dry.

a. Rate of Application:

Trees - ½ lb. per inch caliper, 8-8-8 fertilizer.

Shrubs - Tablespoon per ft. height, 8-8-8 fertilizer.

Groundcover Areas - 25 lbs. per 1,000 sq. ft., 8-8-8 fertilizer.

Wood for Stakes. Unless otherwise specified, use sound uniform stakes 2" x 2" x 5' long, pointed at one end. Saplings or small tree trunks may not be used for staking material.

Wire. Use annealed galvanized steel wire, #14 gauge zinc coated iron.

Hose. Use suitable lengths of rubber or plastic garden hose, ½" diameter. Used hose will be acceptable.

Planting Soil shall consist of one part existing soil and two parts planting mix. Planting mix shall consist of one part peat moss, one part decomposed pine bark and three parts topsoil. Alternative soil mix, submitted to the Landscape Architect shall be considered and approved or disapproved.

Water shall be furnished by Owner. The Contractor shall furnish all hoses and labor to apply.

Herbicide. Use a commercial herbicide such as Scott's "Halt", or other approved equal as a pre-emergent weed killer.

C. CERTIFICATES OF INSPECTION

Certificates of inspection shall accompany the invoice for each shipment of plants as may be required by law for transportation. Inspection by federal or state governments at place of growth does not preclude rejection of the plants at the site.

D. PREPARATION, HANDLING AND DIGGING

Prepare plants for shipment in a manner that will prevent any damage to the branches, shape or future development at the site.

- Protection against drying out. Handle plants so that roots, stems and branches are adequately protected at all times from drying out. Plants that cannot be planted immediately on delivery shall be kept in the shade, well protected with soil, wet moss or other acceptable material and shall be well-watered. Plants shall not remain unplanted for longer than three days after delivery.

- Digging. Retain as many fibrous roots as possible.

- Balled Plants. Plants designated "B & B" shall be adequately balled with firm natural balls of soil in sizes as specified in American Standard for Nursery Stock. Balls shall be firmly wrapped with burlap and securely tied with heavy twine or rope. Plants with loose, broken or manufactured balls shall be rejected. Balls shall be lifted from the bottom only, not by stems or trunks, any such handling shall be grounds for immediate rejection of the material by the Landscape Architect.

- Groundcover beds shall be loosened and raked clean of debris and vegetation. Plants shall be evenly spaced and set to finish grade requirements. All areas prepared for planting in groundcovers shall be covered immediately with Pine Straw, to a depth of three (3) inches as specified herein.

- Planting beds shall be prepared by loosening all soil and raking beds clean of all debris and vegetation. Herbicide and pre-emergent weed killer shall be applied as recommended by the manufacturer. Plants shall be evenly spaced and set to finished grades. All beds shall be immediately covered with (3) inches of mulch as specified herein.

- Container Plants shall be removed just prior to planting in such a manner as to leave the root ball intact and undisturbed. If plants (i.e. azaleas) are pot bound, then longitudinal cuts should be made on the root ball to allow plant to "root out".

E. PLANTING

- All plants, deciduous and evergreen, shall be planted at such times of the year as the Landscape Architect deems suitable, with the agreement of the Contractor to guarantee the material as herein specified. Actual planting shall be performed only during periods when weather conditions are suitable.

- Layout of major planting. Locations for plants and outlines of areas to be planted shall be approved by the Landscape Architect before excavation is begun. Review the applicable architectural and engineering drawings and be familiar with the alignment of underground utilities before digging.

- Excavation of plant trenches and pits. Dig pits as shown on drawings. Remove and legally dispose of excess soils.

- Setting plants: All plants shall be set so that when settled they will bear the same relation to the required finished grades as they bore to the natural grade before transplanting. Each plant shall be planted in planting soil in the center of the pit.

- Prepare planting pits as specified and as shown on the drawings, prior to inserting plants. Use planting soil to backfill plant pits. Eliminate all air pockets. All shrubs shall be planted in individual pits. If the individual pits are arranged in a group, the area between the pits shall be filled to the required grade with clean soil from the excavation of the plant areas or with other acceptable soil. Plant beds shall be neatly edged and kept in this condition until the work is accepted.

- Set plants plumb and brace rigidly in position until the planting soil has been compacted around root balls. Roll burlap down root ball sufficiently to allow air and moisture to reach root zones.
- Form shallow saucers capable of holding water about each plant by placing a mound of topsoil around the edge of each filled in pit.
- Mulching: Immediately after the work of planting has been completed, a layer of pine straw or other approved or specified mulch (3) three inches deep shall be placed on the finished surface about the plant. The mulch around isolated plants shall cover the entire area of the pit. Where plants are planted in groups, the area about the plant, as well as the entire area between the plants, shall be covered with mulch.
- Water: All plants to be holed immediately after planting.

A. STAKING AND PRUNING

- Staking shall be completed immediately after planting. Plants shall stand plumb after staking in accordance with the detail drawings.

- Staking trees 2 -1/2" caliper and under. Stake immediately as shown on the drawings after planting and maintain stakes and wires until acceptance. Unless otherwise approved, place stakes one foot (minimum) away from trunk of tree. Drive stakes securely into the ground and fasten to the tree with double No. #14 wire through a suitable length of hose. Draw wire taut and tie the inside hose so that wire is not in contact with plants at any point and ends are hidden in hose. Trees under 1" in caliper shall be supported by a single stake.

- Pruning of deciduous material shall be limited to the removal of injured twigs and branches. Leave intact the normal shape of the plant. Use clean, sharp tools.

- Paint wounds and cuts on deciduous material over ½" diameter with an approved tree wound paint, covering all exposed, living tissue.

G. MAINTENANCE OF TREES, SHRUBS AND GROUNDCOVER

- Trees, shrubs, groundcovers and grassed areas shall be maintained completely until acceptance, which shall be 30 days after planting operations are complete and approved by the Landscape Architect. This maintenance shall include watering, mulching, weeding and all other operations necessary to maintain a thriving, natural and healthy growth of the plantings proposed.

- Sidewalks, streets and other paved areas shall be kept clean when planting and maintenance operations are in progress.

H. GUARANTEE AND REPLACEMENT

- The guarantee period shall begin at the acceptance of work or portions thereof, on the date substantial completion is recognized in writing by the Landscape Architect.

- All plant material shall be guaranteed by the Contractor for a period of one calendar year from the date of acceptance. The Contractor shall be responsible for replacing all plants which die or are not in healthy and thriving condition during the guarantee period as determined by the Landscape Architect.

- The Contractor shall replace, without cost to the Owner, and as soon as weather conditions permit, all dead plants and all plants not in a vigorous thriving condition, as determined by the Landscape Architect during and at the end of the guarantee period. The plants shall be free of dead branches and dead branch tips and shall bear foliage of a normal density, size and color. Replacements shall closely match adjacent specimens of the same species, and shall be subject to selection in the field by the Landscape Architect prior to digging.

- Acts of God, materials planted and damaged or destroyed by any phenomena considered as an Act of God e.g., unusually strong winds, fire, flood, extreme freeze, theft, hail or vandalism shall according to the law, belong to the "Owner" and shall be his responsibility. Materials on site as yet, not planted are not covered by this clause and shall be the responsibility of the landscape contractor.

1. CLEARING OF GROUND

Upon completion of the work, the grounds shall be cleared of all debris, of all superfluous materials and all equipment which shall be entirely removed from the premises.

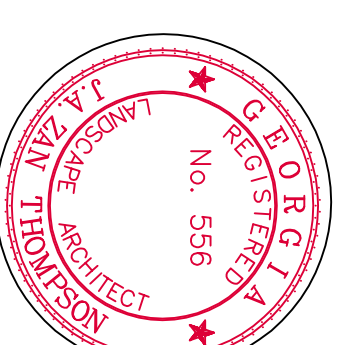
ZT3 Placemaker Studio, Inc.
Designing Desirable Spaces & Places

urban planning & design
land planning
landscape architecture

EDWARDS FIRM

484 FIRST STREET, SUITE 1
MADON, GEORGIA 30421
WWW.ZT3PLACEMAKER.COM

These documents/drawings are the intellectual property of ZT3 Placemaker Studio, Inc. and shall remain the property of ZT3 Placemaker Studio, Inc. and shall not be reproduced, copied, or disseminated in any form without the written permission of ZT3 Placemaker Studio, Inc. or its Landscape Architect.



NOT RELEASED FOR CONSTRUCTION

REVISIONS	REV. #	DATE	DESCRIPTION

LANDSCAPE PLANTING PLAN
Peach County Workforce Development Center
Peach County Board of Commissioners
Peach County, Georgia

BID SET

PROJECT NO.	982.03
DATE	05/21/2015
SHEET TITLE	LANDSCAPE PLANTING PLAN
CHECKED BY	MASTER PLAN
SHEET NO.	ZT LA-9



Call Before We Dig