

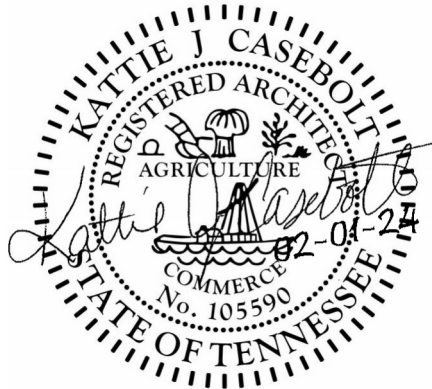
# COLLECTIVE

ARCHITECTURE COMPANY

DATE: Feb 2, 2024

MEMORANDUM TO: All Potential Bidders

FROM: Collective Architecture Company  
Kattie Casebolt  
236 E. Market Street  
Kingsport, TN 37663



SUBJECT: Addendum #1

PROJECT NAME: Interior Modifications to  
Sullivan County Health Department  
154 Blountville Bypass  
Blountville, TN 37616

\*\*\*\*\*

ITEM # 1 **Current Specification:** Replace page 1 of table on contents with attachment "Table of Contents Page 1 - R1 - 2-2-2024" section "01019 - Contract Considerations" was deleted.

ITEM # 2 **Current Specification:** Replace specification section “06411 – Custom Plastic Laminate Casework” with attachment “06411 - Custom Plastic Laminate R1 – 2-2-2024” all items mentioning “Solid Surface Countertops” was changed to read “Laminate or Plastic Laminate Countertops”.

ITEM # 3 **Current Specifications:** Replace specification section “09900 - Painting” with attachment “09900 Painting R1 – 2-2-2024”. Section 3.7 Schedule – Interior Surfaces primers changed from alkyd prime sealer to latex primer.

ITEM # 4 **Current Bid Documents:** Replace sheets A101 & A102 of the bid documents with attached sheets A101 R1 – 2-2-2024 & A102 R1 – 2-2-2024. General Construction Note No 5 was added, “Contractor shall prime and paint all new walls and touch up adjacent walls as necessary. Contractor shall also touch up walls with paint where casework is removed and installed”.

Attachments **Table of Contents Page 1 – R1 – 2-2-2024, 06411 Custom Plastic Laminate Casework R1 – 2-2-2024, A101 R1 – 2-2-2024 & A102 R1 – 2-2-2024**

**END OF ADDENDUM**

**SULLIVAN COUNTY HEALTH DEPARTMENT RENOVATION - 1/16/2024**

**TABLE OF CONTENTS**

COVER SHEET  
TABLE OF CONTENTS - 1/16/2024

**BIDDING REQUIREMENTS, CONTRACT FORMS, AND CONDITIONS OF THE CONTRACT**

	<b>PAGES</b>
Letter to Prospective Bidders	1 page
Invitation to Bid	1 page
Instruction to Bidders	5 pages
Sullivan County Bid Envelope Cover	1 page
Sullivan County Bid Form	3 pages
Sullivan County Affidavits Form	2 pages
Buy American Certification	1 page
Certification Regarding Lobbying	1 page
Certification Regarding Debarment	1 page

**DIVISION 1 - GENERAL REQUIREMENTS**

00501 - Agreement - AIA With AIA A101 and A201 Attached	00501-49
01010 - Summary of Work	01010-2
01039 - Coordination and Meetings	01039-3
01300 - Submittals	01300-5
01400 - Quality Control	01400-2
01500 - Construction Facilities and Temporary Controls	01500-2
01600 - Material and Equipment	01600-2
01700 - Contract Closeout	01700-3

**DIVISION 2 - SITEWORK (NOT USED)**

**DIVISION 3 - CONCRETE (NOT USED)**

**DIVISION 4 - MASONRY (NOT USED)**

**DIVISION 5 – METALS (NOT USED)**

**DIVISION 6 - WOOD AND PLASTIC**

06411 – Custom Plastic Laminate Casework	06411-5
--	---------

**DIVISION 7 - THERMAL AND MOISTURE PROTECTION (NOT USED)**

**DIVISION 8 - DOORS AND WINDOWS (NOT USED)**

**TABLE OF CONTENTS**

**SULLIVAN COUNTY HEALTH DEPARTMENT**

**SECTION 06411**

**CUSTOM PLASTIC LAMINATE CASEWORK**

**PART 1 GENERAL**

**1.1 SECTION INCLUDES**

- A. Special fabricated cabinet units.
- B. Cabinet hardware.
- C. Preparation for installing utilities.
- D. Countertops.

**1.2 REFERENCES**

- A. AWI (Architectural Woodwork Institute) - Quality Standards.

**1.3 SUBMITTALS FOR REVIEW**

- A. Section 01300 - Submittals: Procedures for submittals.
- B. Shop Drawings: Indicate materials, component profiles and elevations, assembly methods, joint details, fastening methods, accessory listings, hardware location and schedule of finishes. C. Product Data: Provide data for hardware accessories.
- D. Samples: Submit two, 12 x 12 inch size samples, illustrating cabinet finish and countertop material.
- E. Samples: Submit two samples of drawer pulls and hinges, illustrating hardware finish.

**1.4 QUALITY ASSURANCE**

- A. Perform work in accordance with AWI Custom quality.

**1.5 ENVIRONMENTAL REQUIREMENTS**

- A. During and after installation of work of this section, maintain the same temperature and humidity conditions in building spaces as will occur after occupancy.

**PART 2 PRODUCTS**

**CUSTOM PLASTIC LAMINATE CASEWORK  
06411-1**

## **2.1 WOOD MATERIALS**

- A. Softwood Lumber: PS 20; graded in accordance with AWI Custom; average moisture content of 11 percent; species and grade selected by manufacturer.
- B. Hardwood Lumber: NHLA; graded in accordance with AWI Custom.

## **2.2 PANEL MATERIALS**

- A. Softwood Plywood: PS 1; graded in accordance with AWI, core materials of particleboard.
- B. Hardwood Lumber: PS 51; HPMA graded in accordance with AWI, core materials of particleboard, type of glue recommended for application.
- C. Hardboard: ANTI A135.4; Pressed wood fiber with resin binder, tempered grade.

## **2.3 LAMINATE CLAD CABINETS (PLASTIC-COVERED CASEWORK)**

- A. Quality Standard: Comply with AWI Section 400 and its Division 400 B "Laminate Clad Cabinets."
  - 1. Grade: Custom
  - 2. AWI Type of Cabinet Construction: Flush overlay.
  - 3. Laminate Cladding: High pressure decorative laminate complying with the following requirements:
  - 4. Colors, Patterns, and Finishes: Provide materials and products that result in colors and textures of exposed laminate surfaces complying with the following requirements:
    - a) Match Architect's sample.
    - b) Match color, pattern, and finish indicated by reference to laminate manufacturer's standard designations for these characteristics.
    - c) Provide selections made by Architect from laminate manufacturer's full range of standard solid colors and finishes.
    - d) Laminate Grade for Exposed Surfaces: Provide laminate cladding complying with the following requirements for type of surface and grade.
    - e) Horizontal Surfaces Other Than Tops: GP-50 (0.050-inch nominal thickness).
    - f) Vertical Surfaces: GP-28 (0.028-inch nominal thickness).
    - g) Edges: GP-28 (0.028-inch nominal thickness).
    - h) Semiexposed Surfaces: Provide surface materials indicated below:

- i) Casework manufacturer's standard low or high pressure laminate.

## **2.4 CABINET HARDWARE AND ACCESSORY AND MATERIALS**

- A. General: Provide cabinet hardware and accessory materials associated with architectural cabinets.
- B. Cabinet Hardware Schedule: Refer to schedule at end of this section for cabinet hardware required for architectural cabinets.

## **2.5 FASTENERS AND ANCHORS**

- A. Screws: Select material, type, size, and finish required for each use. Comply with FS FF-S111 for applicable requirements.

## **2.6 MANUFACTURERS - PLASTIC LAMINATE**

- A. Manufacturers:
  - 1. Formica Corp, Solid Colors.
  - 2. Nevamar Corp., Solid Colors.
  - 3. Substitutions: Refer to Section 01600.

## **2.7 LAMINATE MATERIALS**

- A. Plastic Laminate: Color and texture as selected, GP-50 horizontal surfaces, GP-28 all other surfaces.

## **2.8 ACCESSORIES**

- A. Adhesive: Type recommended by laminate manufacturer to suit application.
- B. Fasteners: Size and type to suit application.
- C. Bolts, Nuts, Washers, Lags, Pins, and Screws: Of size and type to suit application.
- D. Concealed Joint Fasteners: Threaded steel.

## **2.9 HARDWARE**

- A. Shelf Standards and Rests: Formed steel channels and rests, cut for fitted rests spaced at 1 inch centers; chrome finish.
- B. Drawer and Door Pulls: EPCO MC 304.
- C. Catches: Magnetic.
- D. Drawer Slides: Blum 430 E Series.
- E. Hinges: Blum Clip 125 Degree Opening.

- F. Sliding Door Track Assemblies: Galvanized steel construction, ball bearing carriers fitted within tracks, multiple pendant suspension attachments for door.

## **2.11 COUNTERTOPS**

- A. Quality Standard: Comply with AWI specifications for laminate countertops and backsplash.
- B. Type of Top: Plastic Laminate
- C. Grade: Custom.
- D. Manufacturers:
  - 1. Formica Corporation
  - 2. Corian Corporation.
  - 3. Substitutions: Refer to Section 01600.
- F. Plastic Laminate material: Color and texture as selected.

## **2.12 FABRICATION**

- A. Shop assemble casework for delivery to site in units easily handled and to permit passage through building openings.
- B. Fit shelves, doors, and exposed edges with 3/8 inch matching hardwood, plastic edging. Use one piece for full length only.
- C. Door and Drawer Fronts: 3/4 inch thick; overlay style.
- D. When necessary to cut and fit on site, provide materials with ample allowance for cutting. Provide trim for scribing and site cutting.
- E. Apply plastic laminate finish in full uninterrupted sheets consistent with manufactured sizes. Fit corners and joints hairline; secure with concealed fasteners. Slightly bevel arises. Locate counter butt joints minimum 2 feet from sink cut-outs.

## **PART 3 EXECUTION**

### **3.1 EXAMINATION**

- A. Section 01039: Verification of existing conditions before starting work.
- B. Verify adequacy of backing and support framing.
- C. Verify location and sizes of utility rough-in associated with work of this section.

### **3.2 INSTALLATION**

- A. Set and secure casework in place; rigid, plumb, and level.
- B. Use fixture attachments in concealed locations for wall mounted components.

- C. Use concealed joint fasteners to align and secure adjoining cabinet units and counter tops.
- D. Carefully scribe casework abutting other components, with maximum gaps of 1/32 inch. Do not use additional overlay trim for this purpose.
- E. Secure cabinet and counter bases to floor using appropriate angles and anchorages.

### **3.3 ADJUSTING**

- A. Adjust installed work. Text installed work for rigidity and ability to support loads.
- B. Adjust moving or operating parts to function smoothly and correctly.

### **3.4 CLEANING**

- A. Section 01700 - Contract Closeout: Cleaning installed work.
- B. Clean casework, counters, shelves, hardware, fittings, and fixtures.

**END OF SECTION 06411**



**SULLIVAN COUNTY HEALTH DEPARTMENT**

**SECTION 09900**

**PAINTING**

**PART 1 GENERAL**

**1.1 SECTION INCLUDES**

- A. Surface preparation and field application of paints and coatings.

**1.2 DEFINITIONS**

- A. Conform to ASTM D16 for interpretation of terms used in this Section.

**1.3 SUBMITTALS**

- A. Submit under provisions of Section 01300.
- B. Product Data: Provide data on all finishing products.
- C. Samples: Submit two samples illustrating range of colors and textures available for each surface finishing product scheduled.
- D. Samples: Submit two samples, 2 x 2 inch in size illustrating selected colors and textures for each color selected.
- E. Manufacturer's Instructions: Indicate special surface preparation procedures and substrate conditions requiring special attention.

**1.4 QUALIFICATIONS**

- A. Manufacturer: Company specializing in manufacturing the Products specified in this section with minimum three years documented experience.
- B. Applicator: Company specializing in performing the work of this section with minimum five years documented experience.

**1.5 FIELD SAMPLES**

- A. Provide field sample of paint under provisions of Section 01400.
- B. Provide field sample panel, 8 feet long by 8 feet wide, illustrating special coating color, texture, and finish.
- C. Locate where directed.

- D. Accepted sample may remain as part of the Work.

#### **1.6 DELIVERY, STORAGE, AND HANDLING**

- A. Deliver, store, protect and handle products to site under provisions of Section 01600.
- B. Deliver products to site in sealed and labeled containers; inspect to verify acceptability.
- C. Container label to include manufacturer's name, type of paint, brand name, lot number, brand code, coverage, surface preparation, drying time, cleanup requirements, color designation, and instructions for mixing and reducing.
- D. Store paint materials at minimum ambient temperature of 45 degrees F and a maximum of 90 degrees F, in ventilated area, and as required by manufacturer's instructions.

#### **1.7 ENVIRONMENTAL REQUIREMENTS**

- A. Do not apply materials when surface and ambient temperatures are outside the temperature ranges required by the paint product manufacturer.
- B. Do not apply exterior coatings during rain or snow, or when relative humidity is outside the humidity ranges required by the paint product manufacturer.
- C. Minimum Application Temperatures for Latex Paints: 45 degrees F for interiors; 50 degrees F for exterior; unless required otherwise by manufacturer's instructions.
- D. Provide lighting level of 80 ft candles measured mid-height at substrate surface.

#### **1.8 EXTRA MATERIALS**

- A. Furnish under provisions of Section 01700.
- B. Provide 1 gallon of each color and type, and surface texture to Owner.
- C. Label each container with color, type, texture, and room locations in addition to the manufacturer's label.

### **PART 2 PRODUCTS**

#### **2.1 MANUFACTURERS**

- A. Manufacturers - Paint
  - 1. ICI.
  - 2. Sherwin Williams.
  - 3. Pittsburgh.
- B. Substitutions: Under provisions of Section 01600. Substitutions permitted.

## **2.2 MATERIALS**

- A. Coatings: Ready mixed, except field catalyzed coatings. Process pigments to a soft paste consistency, capable of being readily and uniformly dispersed to a homogeneous coating; good flow and brushing properties; capable of drying or curing free of streaks or sags.
- B. Accessory Materials: Linseed oil, shellac, turpentine, paint thinners and other materials not specifically indicated but required to achieve the finishes specified, of commercial quality. C. Patching Materials: Latex filler.
- D. Fastener Head Cover Materials: Latex filler.

## **2.3 FINISHES**

- A. Refer to Drawings.

## **PART 3 EXECUTION**

### **3.1 EXAMINATION**

- A. Verify site conditions under provisions of Section 01039.
- B. Verify that substrate conditions are ready to receive work as instructed by the product manufacturer.
- C. Examine surfaces scheduled to be finished prior to commencement of work. Report any condition that may potentially affect proper application.
- D. Test shop applied primer for compatibility with subsequent cover materials.
- E. Measure moisture content of surfaces using an electronic moisture meter. Do not apply finishes unless moisture content of surfaces are below the following maximums:
  - 1. Plaster and Gypsum Wallboard: 12 percent.
  - 2. Masonry, Concrete, and Concrete Unit Masonry: 12 percent.
  - 3. Interior Wood: 15 percent, measured in accordance with ASTM D2016.
  - 4. Exterior Wood: 15 percent, measured in accordance with ASTM D2016.

### **3.2 PREPARATION**

- A. Remove electrical plates, hardware, light fixture trim, escutcheons, and fittings prior to preparing surfaces or finishing.
- B. Correct defects and clean surfaces which affect work of this section. Remove existing coatings that exhibit loose surface defects.
- C. Seal with shellac and seal marks which may bleed through surface finishes.

- D. Impervious Surfaces: Remove mildew by scrubbing with solution of tri-sodium phosphate and bleach. Rinse with clean water and allow surface to dry.
- E. Aluminum Surfaces Scheduled for Paint Finish: Remove surface contamination by steam or high pressure water. Remove oxidation with acid etch and solvent washing. Apply etching primer immediately following cleaning.
- F. Gypsum Board Surfaces: Fill minor defects with filler compound. Spot prime defects after repair.
- G. Galvanized Surfaces: Remove surface contamination and oils and wash with solvent. Apply coat of etching primer.
- H. Plaster Surfaces: Fill hairline cracks, small holes, and imperfections with latex patching plaster. Make smooth and flush with adjacent surfaces. Wash and neutralize high alkali surfaces.
- I. Interior Wood Items Scheduled to Receive Paint Finish: Wipe off dust and grit prior to priming. Seal knots, pitch streaks, and sappy sections with sealer. Fill nail holes and cracks after primer has dried; sand between coats.

### **3.3 APPLICATION**

- A. Apply products in accordance with manufacturer's instructions.
- B. Do not apply finishes to surfaces that are not dry.
- C. Apply each coat to uniform finish.
- D. Apply each coat of paint slightly darker than preceding coat unless otherwise approved.
- E. Sand wood and metal lightly between coats to achieve required finish.
- F. Vacuum clean surfaces free of loose particles. Use tack cloth just prior to applying next coat.
- G. Allow applied coat to dry before next coat is applied.
- H. Where clear finishes are required, tint fillers to match wood. Work fillers into the grain before set. Wipe excess from surface.
- I. Prime concealed surfaces of interior and exterior woodwork with primer paint.
- J. Prime concealed surfaces of interior woodwork scheduled to receive stain or varnish finish with gloss varnish reduced 25 percent with mineral spirits.

### **3.4 FINISHING MECHANICAL AND ELECTRICAL EQUIPMENT**

### **3.5 CLEANING**

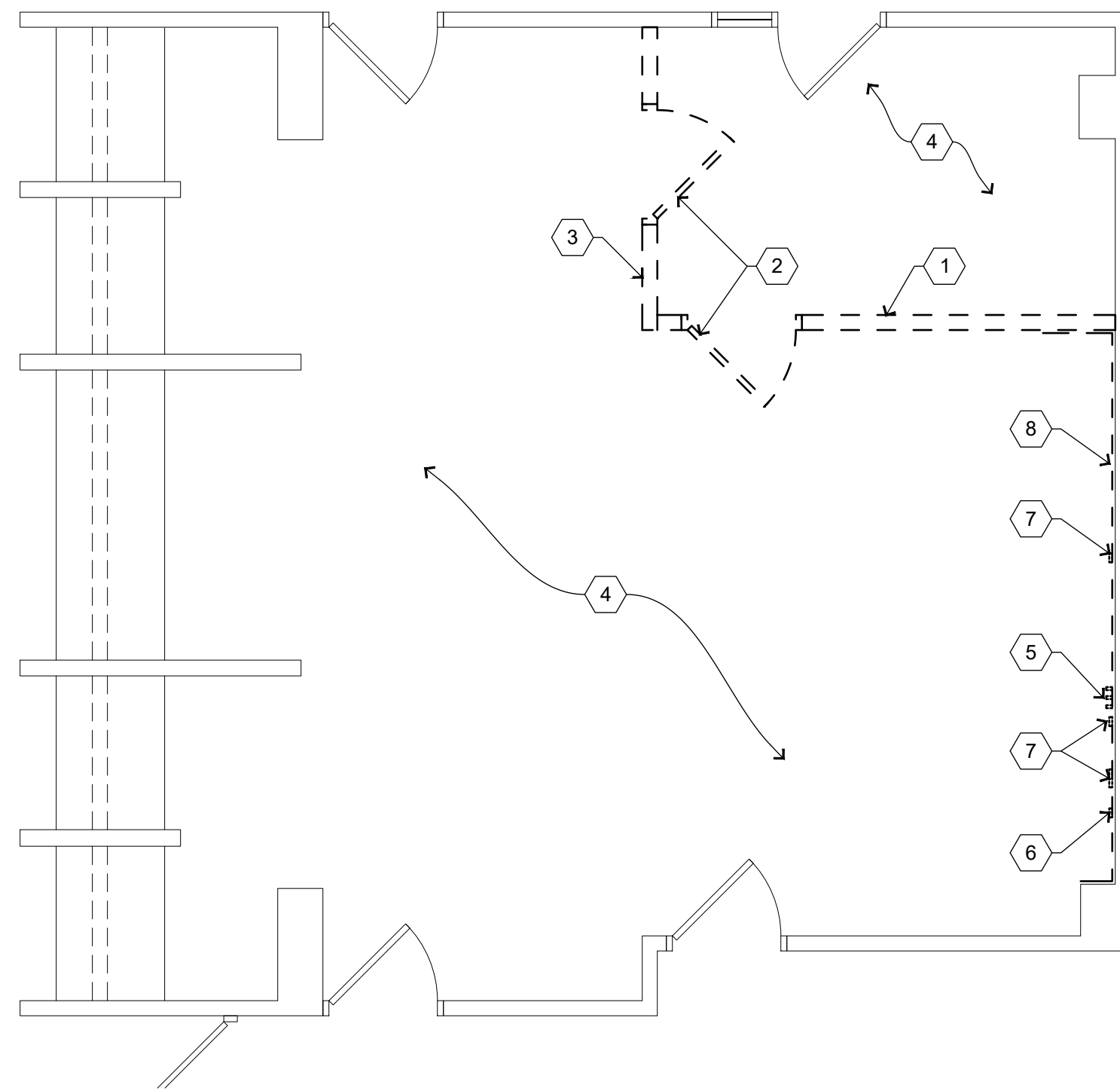
- A. Clean work under provisions of 01700.
- B. Collect waste material which may constitute a fire hazard, place in closed metal containers and remove daily from site.

### **3.6 SCHEDULE - EXTERIOR SURFACES**

### **3.7 SCHEDULE - INTERIOR SURFACES**

- A. Wood - Painted:
  - 1. One coat of interior latex primer.
  - 2. Two coats of latex enamel, semi-gloss.
- B. Plaster, Gypsum Board:
  - 1. One coat of interior latex primer.
  - 2. Two coats of latex enamel, flat.

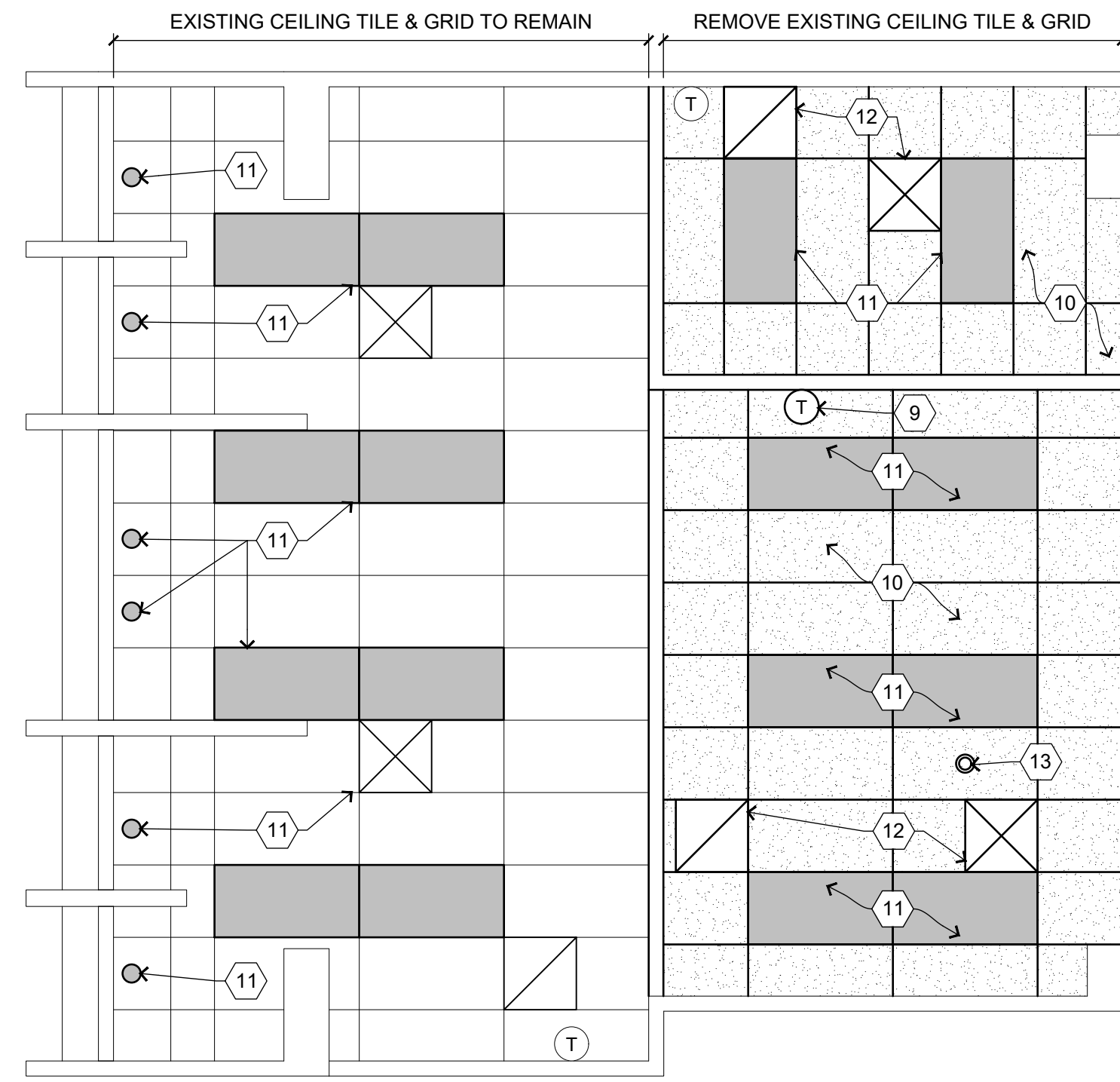
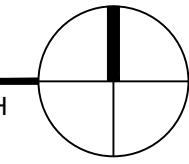
**END OF SECTION 09900**



**DEMOLITION FLOOR PLAN**

SCALE: 1/4"=1'-0"

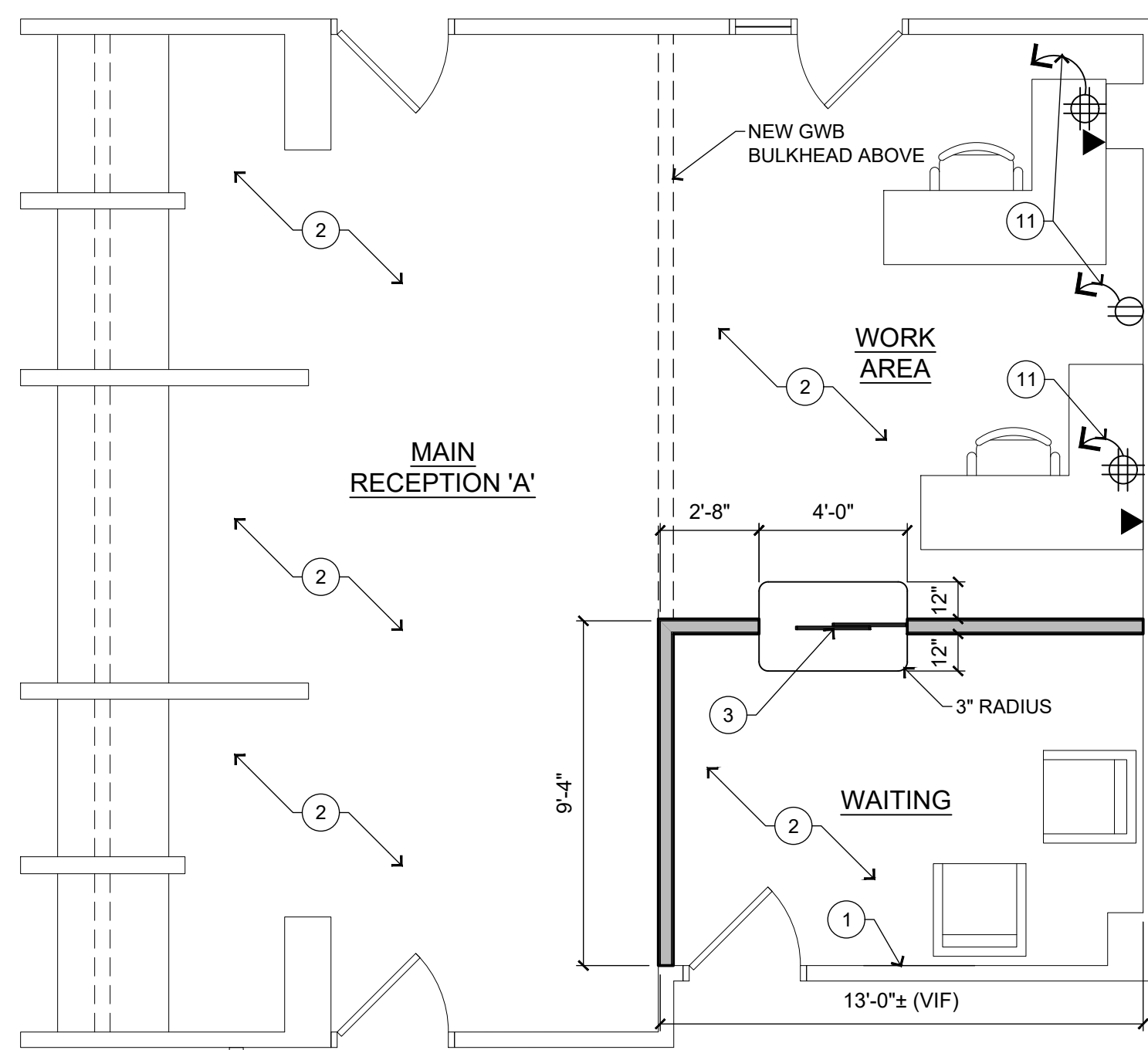
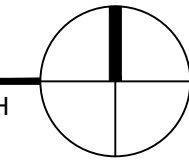
PLAN NORTH



**DEMOLITION CEILING PLAN**

SCALE: 1/4"=1'-0"

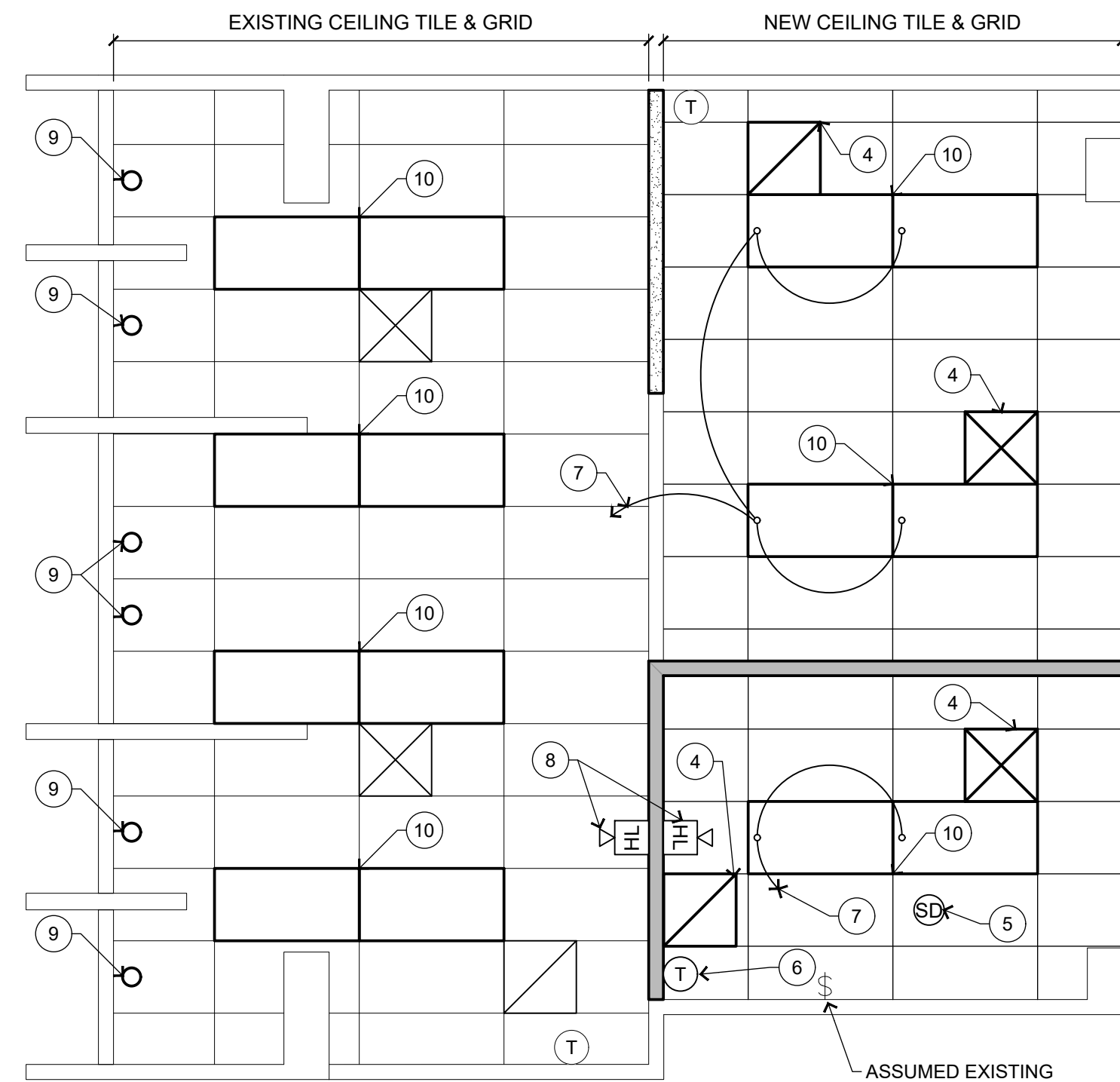
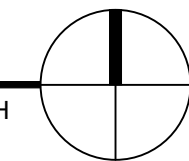
PLAN NORTH



**NEW FLOOR PLAN**

SCALE: 1/4"=1'-0"

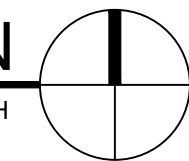
PLAN NORTH



**NEW CEILING PLAN**

SCALE: 1/4"=1'-0"

PLAN NORTH



**FLOOR & CEILING PLAN LEGEND:**

- EXISTING WALL & DOOR
- DEMO WALL & DOOR
- OTHER ITEMS TO BE DEMOLISHED OR REMOVED
- NEW 20 GA. 3 1/2" METAL STUD WALL AT 1'-4" OC W/ 3/8" GWB ON EA SIDE AND A NEW RECEPTION SLIDING WINDOW
- EXISTING 2x4 CEILING TILE
- EXISTING CEILING TILE & GRID TO BE DEMOLISHED
- NEW 2x4 CEILING TILE & GRID
- EXISTING 2x4 & CAN LIGHTS TO BE REPLACE WITH NEW LED LIGHTS
- NEW 2x4 LAY-IN LIGHT
- EXISTING HVAC DIFFUSERS
- EXISTING HVAC DIFFUSERS TO BE REMOVED/RELOCATED
- NEW/RELOCATED HVAC SUPPLY & RETURN DIFFUSERS
- EXISTING HVAC THERMOSTAT
- RELOCATED HVAC THERMOSTAT
- CEILING MOUNTED SMOKE DETECTOR
- HORN & STROBE LIGHT
- NEW ELECTRICAL CIRCUIT DIAGRAM
- DUPLEX-AND QUAD RECEPTACLE
- DATA RECEPTACLE
- EXISTING SWITCH - VERIFY IN FIELD
- SPECIFIC DEMOLITION NOTE
- SPECIFIC CONSTRUCTION NOTE

**GENERAL DEMOLITION NOTES:**

1. CONTRACTOR SHALL VERIFY ALL ITEMS INDICATED TO BE DEMOLISHED WITH THE ARCHITECT PRIOR TO STARTING DEMOLITION WORK.
2. CONTRACTOR SHALL FIELD VERIFY ALL WALLS TO BE DEMOLISHED ARE NON-LOAD BEARING PRIOR TO REMOVAL. SHORE ALL LOAD BEARING WALLS AND NOTIFY ARCHITECT PRIOR TO PROCEEDING.
3. ALL DIMENSIONS ARE TO FACE OF EXISTING STUDS AND FACE OF EXISTING WALL UNLESS NOTED OTHERWISE.
4. CUTTING OF EXISTING CONSTRUCTION FOR THE INSTALLATION OF ALL NEW WORK BY ALL TRADES, AND THE SUBSEQUENT PATCHING THEREOF, SHALL BE THE RESPONSIBILITY OF THE GENERAL CONTRACTOR, WHETHER THE WORK IS DONE BY HIS OWN FORCES OR NOT. CUTTING SHALL BE TO STRAIGHT LINE, UN-WORKMANLIKE CUTTING, DAMAGE RESULTING FROM AND UNACCEPTABLE PATCHING SHALL BE REPAIRED AND/OR REPLACED TO AN ACCEPTABLE CONDITION APPROVED BY THE OWNER.
5. PATCHING MATERIAL SHALL MATCH EXISTING ADJACENT MATERIALS AS CLOSELY AS POSSIBLE IN COLOR, PATTERNS, AND/OR TEXTURE.
6. ALL SALVAGE MATERIALS REMOVED SHALL REMAIN THE PROPERTY OF THE OWNER U.N.O. ALL NON-SALVAGED CONSTRUCTION MATERIALS AND DEBRIS FROM DEMOLITION WORK SHALL BE REMOVED FROM THE SITE AS WORK PROGRESSES.
7. PROTECT ALL EXISTING FINISHES, WALLS, FIXTURES, AND DEVICES TO REMAIN.
8. CONTRACTOR TO PATCH EXISTING FINISHES TO ORIGINAL CONDITION AND TO TOUCH UP FINISHES AS REQUIRED PRIOR TO NEW INSTALLATION.
9. REMOVE ALL MATERIALS, FINISHES, DEVICES, FIXTURES EXPOSED OR CONCEALED ELEMENTS AS REQUIRED TO ACCOMMODATE THE NEW PLAN AND DOCUMENT LAYOUT.

**SPECIFIC DEMOLITION NOTES:**

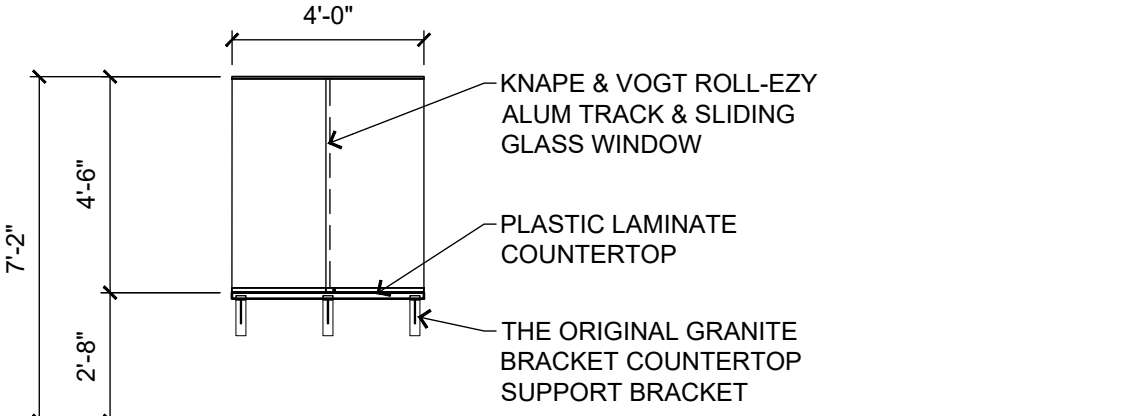
- OCUR ON THE PLANS WHERE (1) IS INDICATED.
- 1 DEMOLISH EXISTING WALL, PATCH AND REPAIR EXISTING FLOOR & WALL AS REQUIRED FOR NEW TILE FLOORING AND PAINT. SECURE ELECTRICAL CIRCUITS AS REQUIRED.
  - 2 DEMOLISH EXISTING DOOR AND FRAME.
  - 3 DEMOLISH SECTION OF EXISTING WALL UP TO ADJACENT EXISTING BULKHEAD.
  - 4 REMOVE EXISTING TILE FLOORING, GLUE RESIDUE AND EXISTING RUBBER WALL BASE.
  - 5 REMOVE, ABANDON AND CAP EXISTING PLUMBING LINES INSIDE OF WALL.
  - 6 EXISTING ELECTRICAL WALL OUTLET SHALL BE LOWERED TO BE 18" ABOVE FLOOR WITH THE TOP OF THE OUTLET.
  - 7 ABANDON AND REMOVE EXISTING ELECTRICAL OUTLETS, PHONE/DATA JUNCTION BOXES. PATCH, REPAIR OPENING WITH ADJACENT MATERIALS AND PREPARE FOR PAINT.
  - 8 REMOVE EXISTING WALL PAPER/BOARDER. PATCH AND REPAIR AS REQUIRED FOR PAINT.
  - 9 REMOVE AND RELOCATE EXISTING HVAC THERMOSTAT. SEE NEW CEILING PLAN THIS SHEET FOR NEW LOCATION.
  - 10 DEMOLISH EXISTING CEILING TILE AND GRID.
  - 11 REMOVE EXISTING LIGHT FIXTURES.
  - 12 REMOVE EXISTING HVAC DIFFUSERS AND REWORK EXISTING DUCTWORK FOR NEW LOCATIONS. SEE NEW CEILING PLAN THIS SHEET.
  - 13 RELOCATED EXISTING CEILING MOUNTED SMOKE DETECTOR.

**GENERAL CONSTRUCTION NOTES:**

1. ALL DIMENSIONS ARE TO FACE OF METAL STUDS & FINISH FACE OF EXISTING WALLS UNLESS OTHERWISE NOTED.
2. CONTRACTOR TO FIELD VERIFY ALL DIMENSIONS SHOW AS PLANS.
3. CONTRACTOR SHALL NOTIFY ARCHITECT TO ANY PROBLEMATIC ISSUES NOT NOTED ON DRAWINGS PRIOR TO NEW CONSTRUCTION.
4. OWNER SHALL PICK COLORS OF CASEWORK/COUNTERTOP/BACKSPLASH LAMINATES, 6" x 36" VINYL PLANK FLOORING TILE & 4" VINYL BASE FROM CONTRACTOR'S SUPPLIED COLOR SAMPLES.
5. CONTRACTOR SHALL PRIME AND PAINT ALL NEW WALLS AND TOUCH UP ADJACENT WALLS AS NECESSARY. CONTRACTOR SHALL ALSO TOUCH UP WALLS WITH PAINT WHERE CASEWORK IS REMOVED AND INSTALLED.

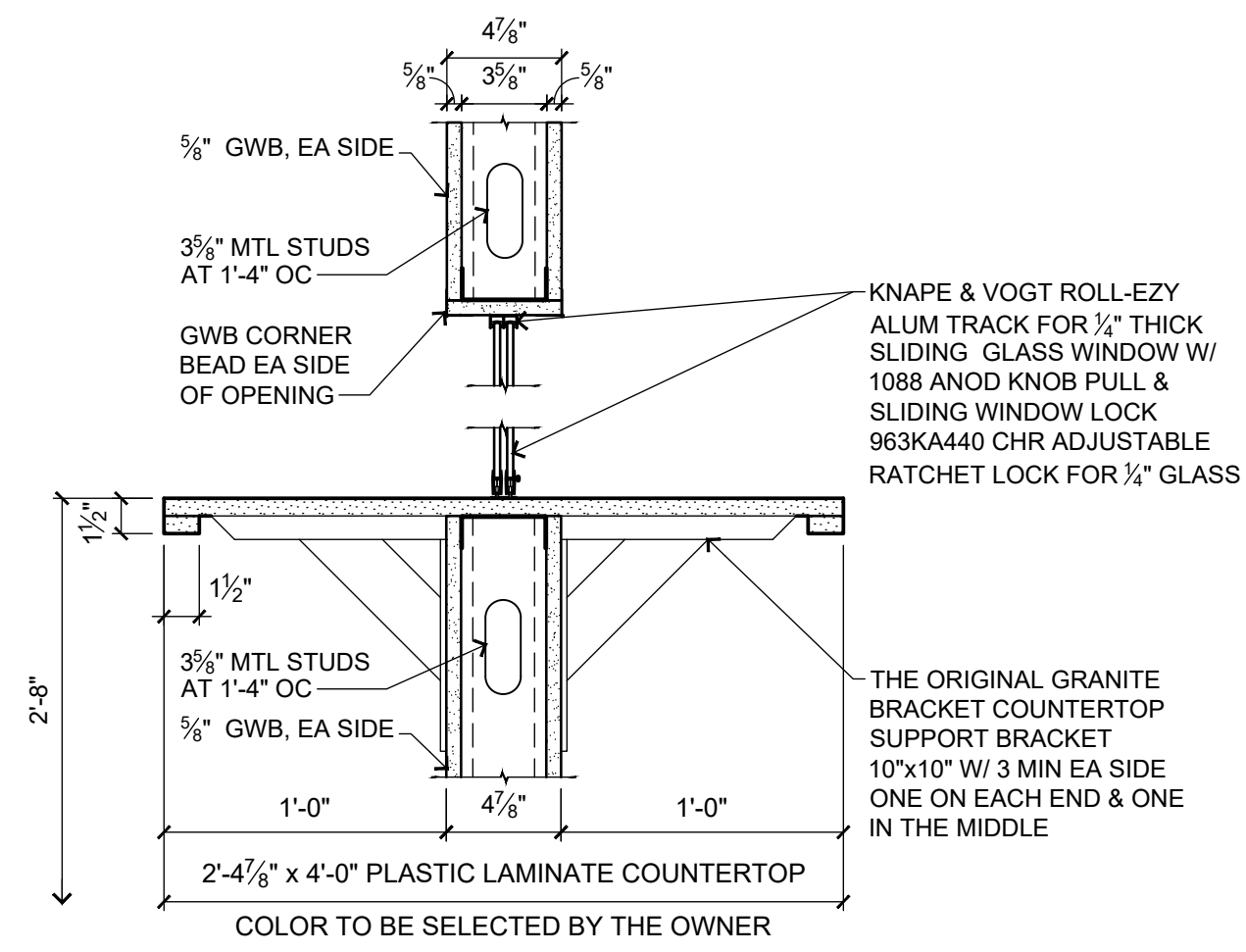
**SPECIFIC CONSTRUCTION NOTES:**

- OCUR ON THE PLANS WHERE (2) IS INDICATED.
- 1 CONTRACTOR SHALL INFILL EXISTING DEMOLISHED WINDOW OPENING WITH GWB. MATCH ADJACENT WALL THICKNESS SO THAT THE INFILL IS FLUSH WITH ADJACENT SURFACES.
  - 2 PROVIDE NEW 6"x36" VINYL PLANK FLOORING AND 4" VINYL WALL BASE. COLOR AND PATTERN TO BE SELECTED BY THE OWNER FROM THE CONTRACTORS SAMPLES.
  - 3 KNAPE & VOGT ROLL-EZY BALL BEARING SLIDING WINDOW OR APPROVED EQUAL. SEE SLIDING GLASS WINDOW ELEVATION AND SECTION BELOW.
  - 4 RELOCATED HVAC SUPPLY AND RETURN DIFFUSERS.
  - 5 RELOCATED EXISTING SMOKE DETECTOR. RECONNECT TO EXISTING SYSTEM.
  - 6 RELOCATED AND RECONNECT EXISTING THERMOSTAT.
  - 7 PROVIDE & INSTALL 3 #12 COPPER IN 3/4" CONDUIT OR MC CABLE AND CONNECT NEW LIGHTS INTO EXISTING LIGHTING CIRCUIT AND SWITCH LEG AS REQUIRED.
  - 8 NEW FIRE ALARM DEVICE - MATCH OWNERS EXISTING SYSTEM, CONNECT AS REQUIRED & NFPA 72.
  - 9 NEW LED RECESSED CAN EQUAL TO LITHONIA MODEL NO WFB-LED-40K-90CRI-MW-M6 (190 LUMENS) - CONNECT INTO EXISTING LIGHTING CIRCUITS & CONNECT AS REQUIRED.
  - 10 NEW 2x4 RECESSED LED FLAT PANEL EQUAL TO LITHONIA MODEL NO CPX-2x4-AL08 (LOW-80CRI-SWWF(40K)-A12-MVOLT TIE INTO EXISTING LIGHTING CIRCUIT AND SWITCH LEG AS REQUIRED.
  - 11 NEW ELECTRICAL DEVICES (RECEPTACLE OR DATA), CONNECT TO EXISTING CIRCUIT IN DEMO NOTE (1).



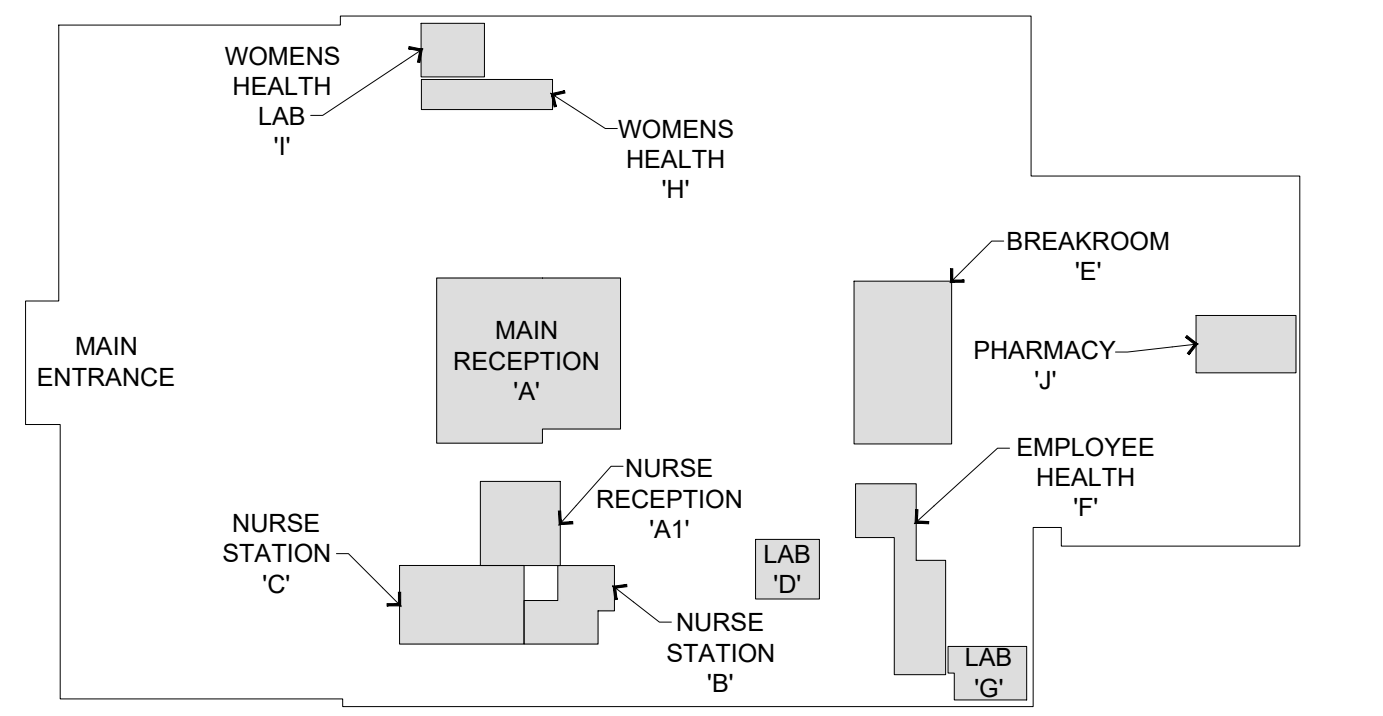
**SLIDING WINDOW ELEVATION**

SCALE: 1/4"=1'-0"



**SLIDING GLASS WINDOW SECTION**

SCALE: 1 1/2"=1'-0"



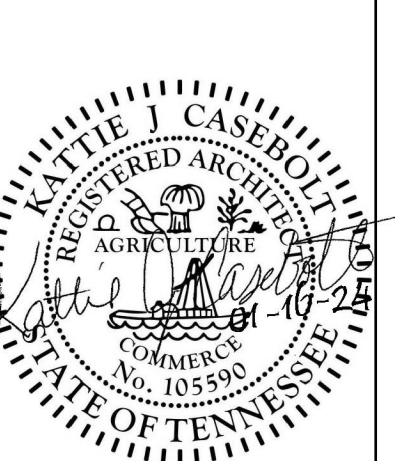
**KEY PLAN**

SCALE: 1/4" = 1'-0"

NOT TO SCALE

SCALE: 1 1/2" = 1'-0"

SEAL:



THIS DRAWING AND THE DESIGN THEREON IS THE PROPERTY OF COLLECTIVE ARCHITECTURE COMPANY. THEIR USE WITHOUT WRITTEN LICENSE IS PROHIBITED AND NOT VALID FOR USE UNLESS SEAL IS AFFIXED AND DATED.

**COLLECTIVE ARCHITECTURE COMPANY**  
236 E. MARKET STREET  
KINGSPORT, TN 37660  
PH: 423.398.6200

INTERIOR MODIFICATIONS FOR  
**SULLIVAN COUNTY HEALTH DEPARTMENT**  
154 BLOUNTVILLE BYPASS  
BLOUNTVILLE, TENNESSEE 37617

DRAWN BY: SC  
DATE: 1-16-2024  
PROJECT #: 23-047  
REVISIONS:

2-2-2024

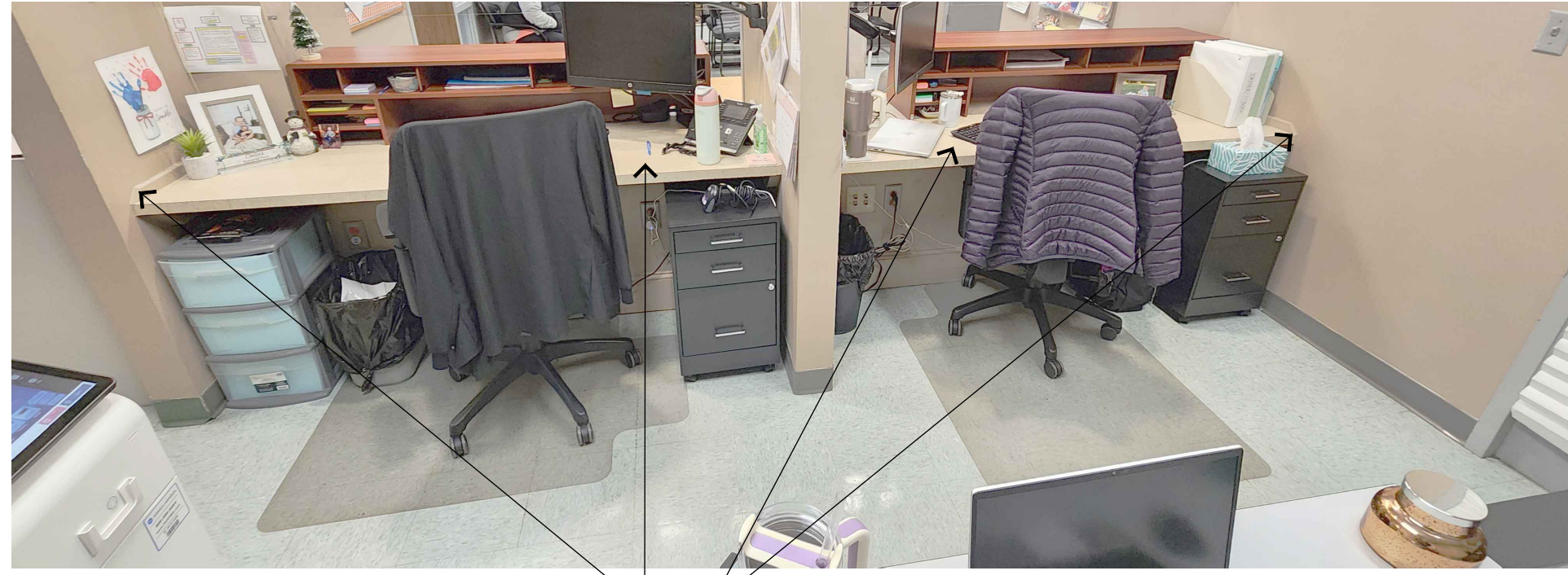
SHEET DESCRIPTION:  
PARTIAL DEMOLITION & PROPOSED MAIN RECEPTION AREA PLANS

SHEET NUMBER:

**A101**

CONTRACTOR SHALL INSPECT ALL EXISTING CONDITIONS TO ENSURE NO DISCREPANCIES WITH CONSTRUCTION DOCUMENTS. LAYOUT WALLS AND VERIFY ALL CRITICAL DIMENSIONS ARE CORRECT PRIOR TO CONSTRUCTION. ANY ISSUES SHALL BE BROUGHT TO THE ATTENTION OF THE ARCHITECT IMMEDIATELY.

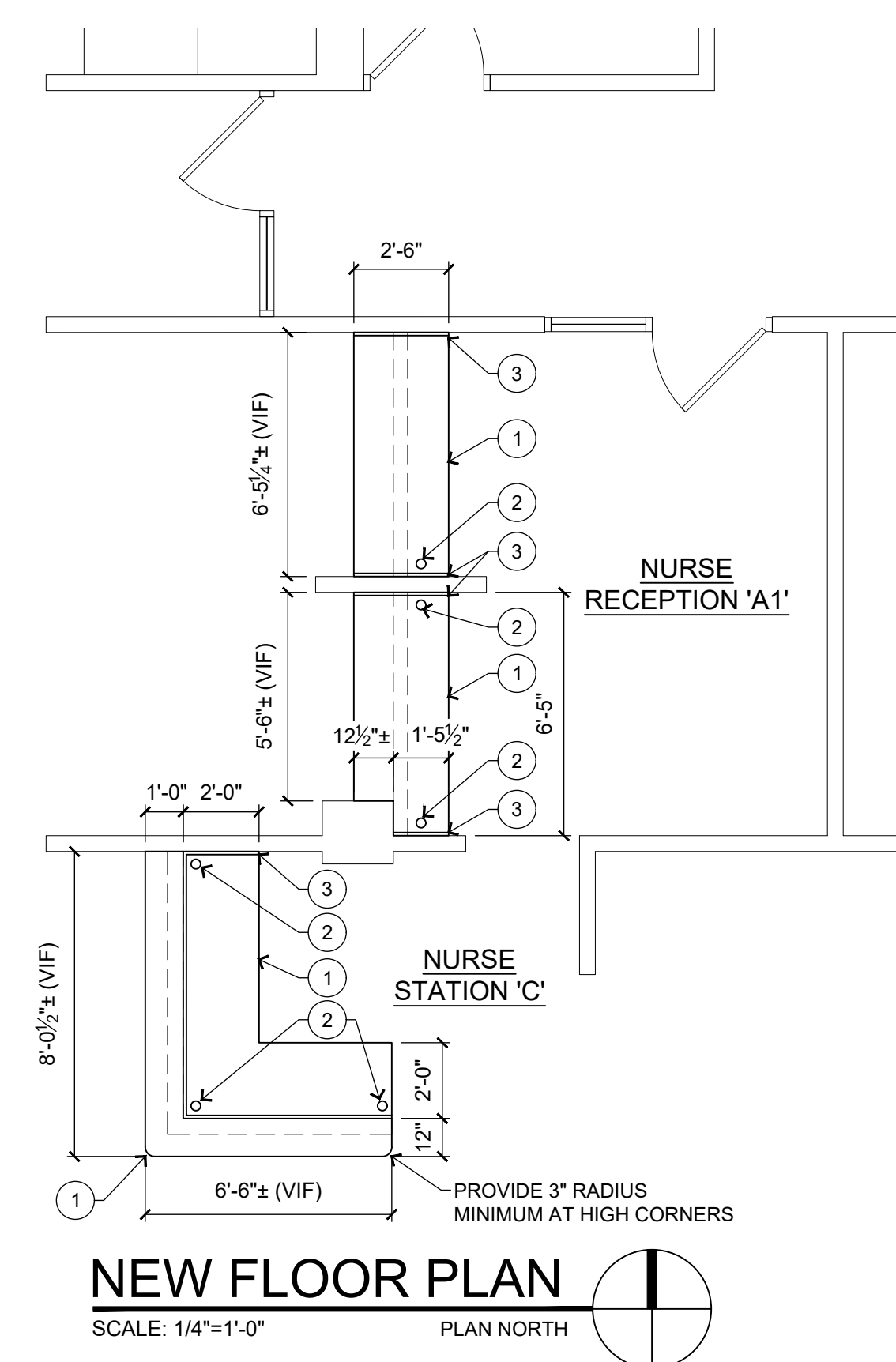
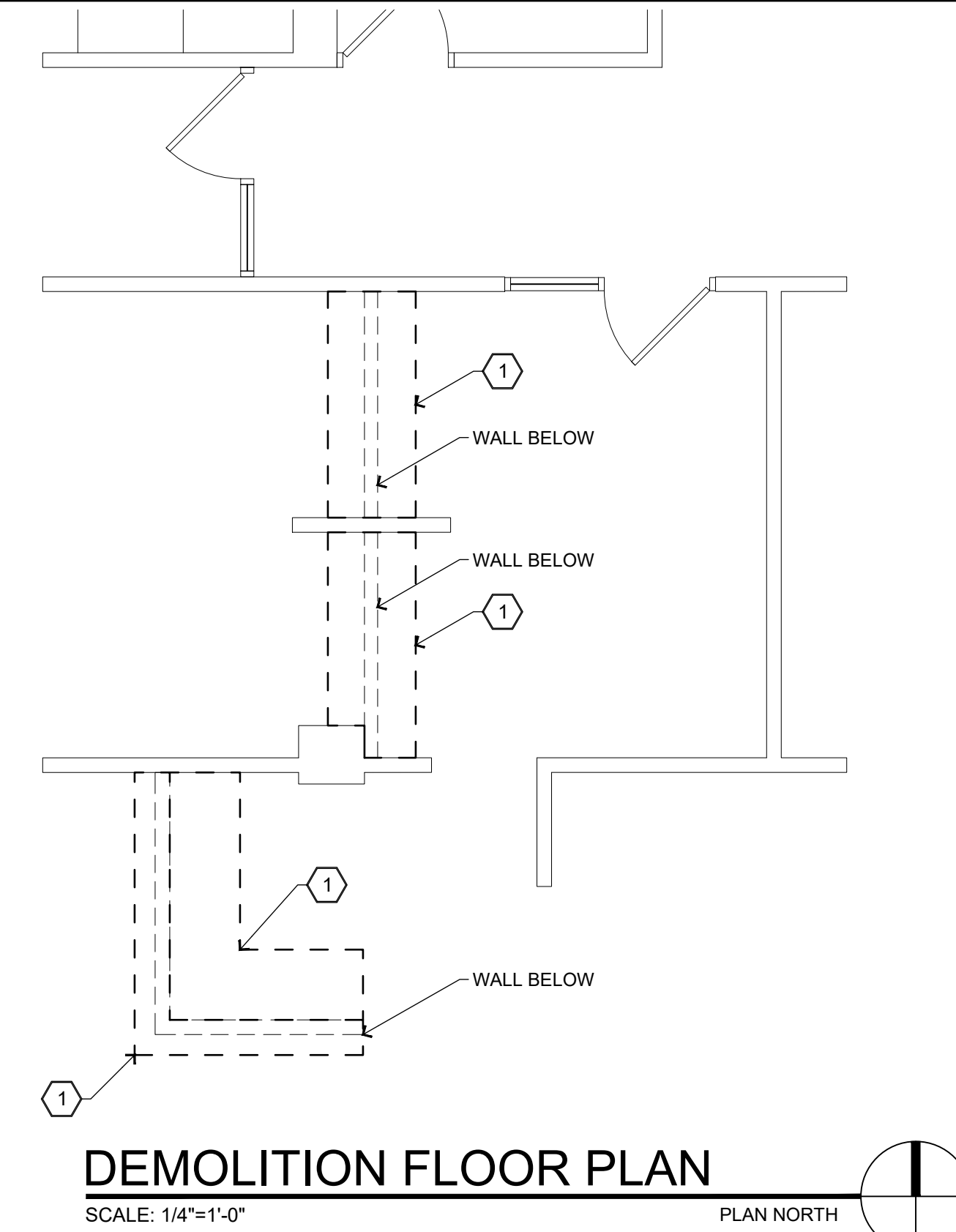
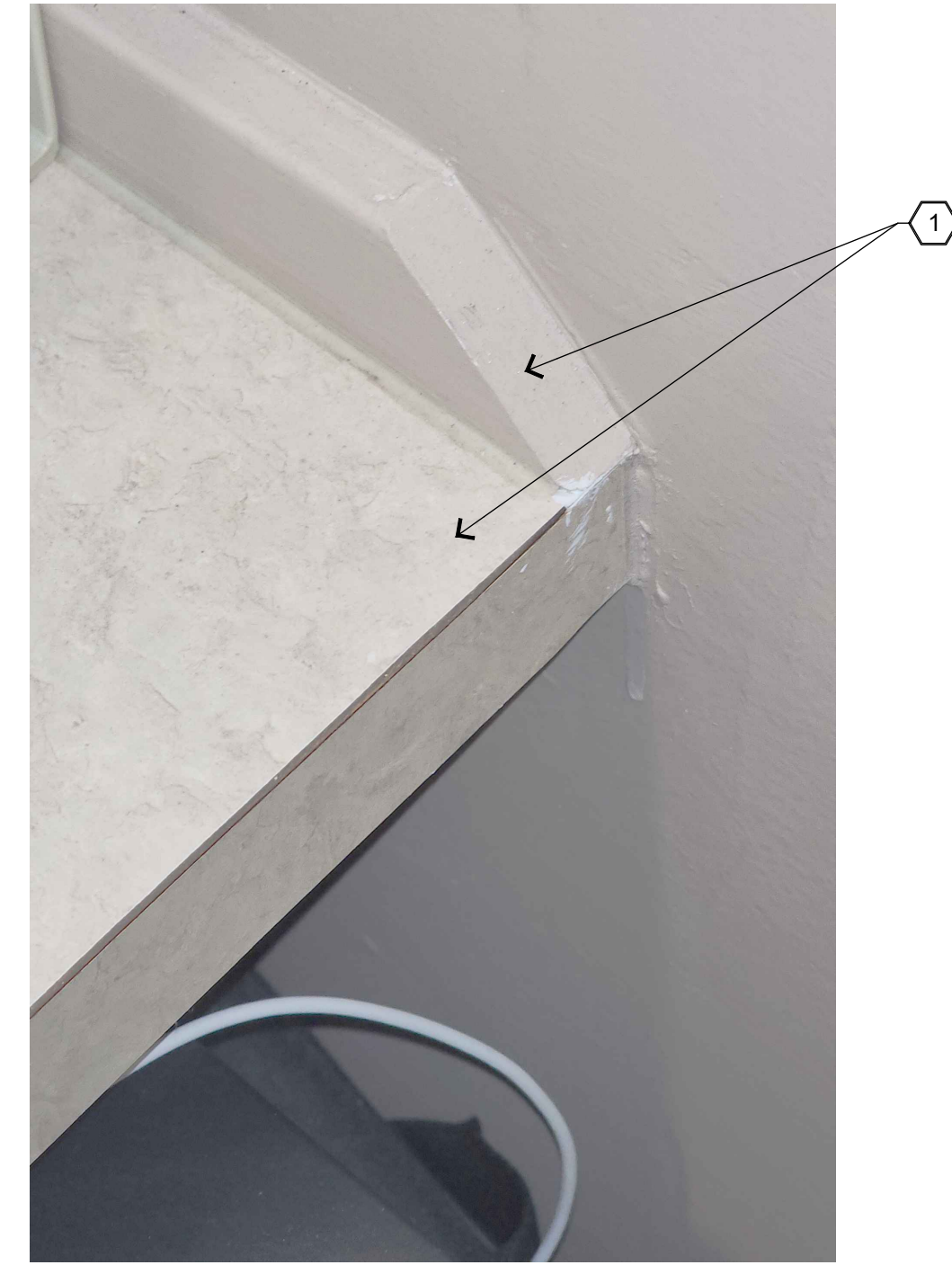




**EXISTING NURSE RECEPTION 'A1'**  
SCALE: NOT TO SCALE



**EXISTING NURSE STATION 'C'**  
SCALE: NOT TO SCALE



**FLOOR & CEILING PLAN LEGEND:**

- EXISTING WALL & DOOR
- OTHER ITEMS TO BE DEMOLISHED OR REMOVED
- NEW PLASTIC LAMINATE COUNTERTOP WITH 3"Ø GROMMETS & 3/4" x 1 1/2" PLASTIC LAMINATE BACKSPASH
- SPECIFIC DEMOLITION NOTE
- SPECIFIC CONSTRUCTION NOTE

**GENERAL DEMOLITION NOTES:**

1. CONTRACTOR SHALL VERIFY ALL ITEMS INDICATED TO BE DEMOLISHED WITH THE ARCHITECT PRIOR TO STARTING DEMOLITION WORK.
2. CONTRACTOR SHALL FIELD VERIFY ALL WALLS TO BE DEMOLISHED ARE NON-LOAD BEARING PRIOR TO REMOVAL. SHORE ALL LOAD BEARING WALLS AND NOTIFY ARCHITECT PRIOR TO PROCEEDING
3. ALL DIMENSIONS ARE TO FACE OF EXISTING STUDS AND FACE OF EXISTING WALL UNLESS NOTED OTHERWISE.
4. CUTTING OF EXISTING CONSTRUCTION FOR THE INSTALLATION OF ALL NEW WORK BY ALL TRADES, AND THE SUBSEQUENT PATCHING THEREOF, SHALL BE THE RESPONSIBILITY OF THE GENERAL CONTRACTOR, WHETHER THE WORK IS DONE BY HIS OWN FORCES OR NOT. CUTTING SHALL BE TO STRAIGHT LINE, UN-WORKMANLIKE CUTTING, DAMAGE RESULTING FROM AND UNACCEPTABLE PATCHING SHALL BE REPAIRED AND/OR REPLACED TO AN ACCEPTABLE CONDITION APPROVED THE THE OWNER.
5. PATCHING MATERIAL SHALL MATCH EXISTING ADJACENT MATERIALS AS CLOSELY AS POSSIBLE IN COLOR, PATTERNS, AND/OR TEXTURE.
6. ALL SALVAGE MATERIALS REMOVED SHALL REMAIN THE PROPERTY OF THE OWNER U.N.O. ALL NON-SALVAGED CONSTRUCTION MATERIALS AND DEBRIS FROM DEMOLITION WORK SHALL BE REMOVED FROM THE SITE AS WORK PROGRESSES.
7. PROTECT ALL EXISTING FINISHES, WALLS, FIXTURES, AND DEVICES TO REMAIN.
8. CONTRACTOR TO PATCH EXISTING FINISHES TO ORIGINAL CONDITION AND TO TOUCH UP FINISHES AS REQUIRED PRIOR TO NEW INSTALLATION.
9. REMOVE ALL MATERIALS, FINISHES, DEVICES, FIXTURES EXPOSED OR CONCEALED ELEMENTS AS REQUIRED TO ACCOMMODATE THE NEW PLAN AND DOCUMENT LAYOUT.

**SPECIFIC DEMOLITION NOTES:**

OCCUR ON THE PLANS WHERE (1) IS INDICATED.

- (1) CONTRACTOR SHALL REMOVE & DEMOLISH EXISTING COUNTERTOP AND BACKSPASH. CONTRACTOR SHALL LEAVE IN-PLACE EXISTING COUNTERTOP SUPPORTS/BRACKETS & UNDER COUNTERTOP WOOD MOLDING.

**GENERAL CONSTRUCTION NOTES:**

1. ALL DIMENSIONS ARE TO FACE OF METAL STUDS & FINISH FACE OF EXISTING WALLS UNLESS OTHERWISE NOTED.
2. CONTRACTOR TO FIELD VERIFY ALL DIMENSIONS SHOW AS PLANS.
3. CONTRACTOR SHALL NOTIFY ARCHITECT TO ANY PROBLEMATIC ISSUES NOT NOTED ON DRAWINGS PRIOR TO NEW CONSTRUCTION.
4. OWNER SHALL PICK COLORS OF CASEWORK/COUNTERTOP/BACKSPASH LAMINATES, 6" x 36" VINYL PLANK FLOORING TILE & 4" VINYL BASE FROM CONTRACTOR'S SUPPLIED COLOR SAMPLES.
5. CONTRACTOR SHALL PRIME AND PAINT ALL NEW WALLS AND TOUCH UP ADJACENT WALLS AS NECESSARY. CONTRACTOR SHALL ALSO TOUCH UP WALLS WITH PAINT WHERE CASEWORK IS REMOVED AND INSTALLED.

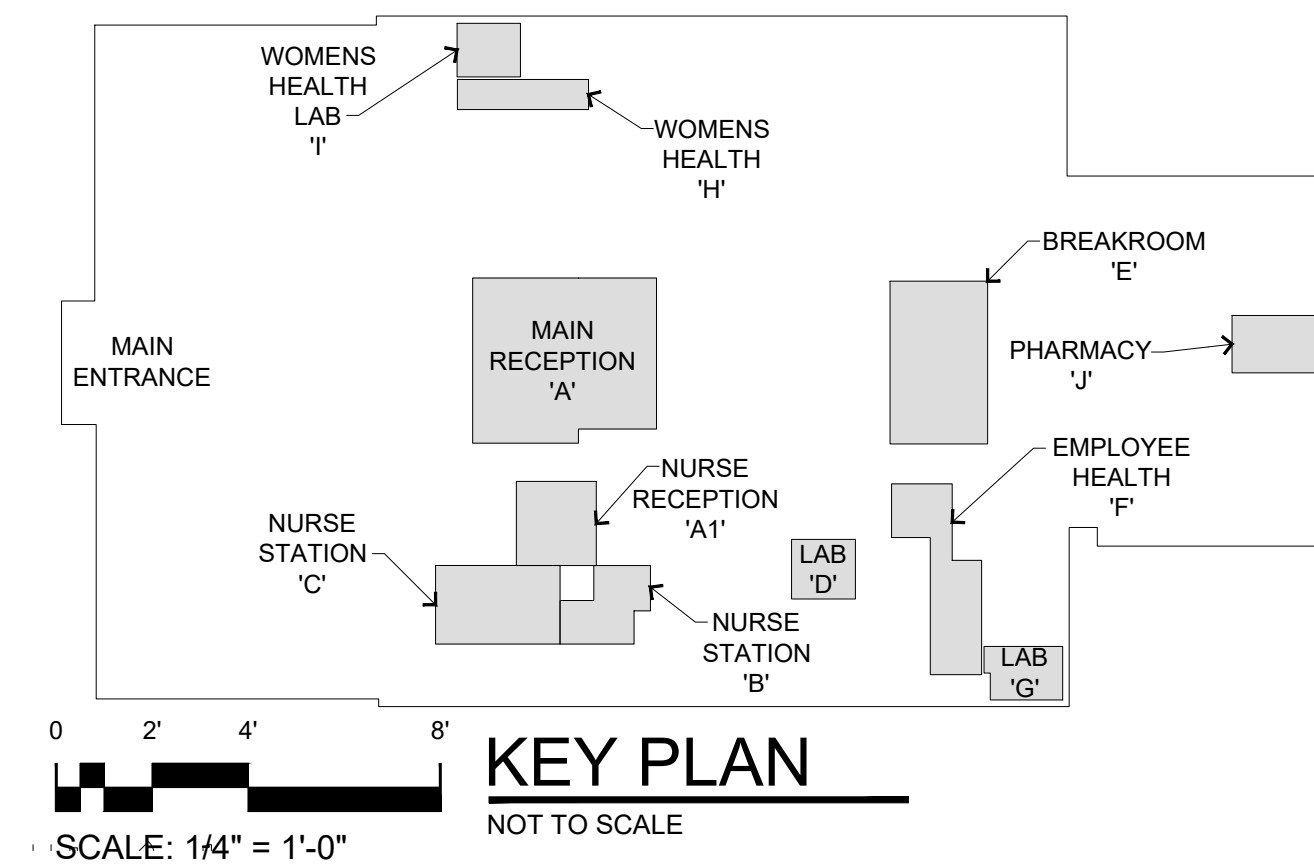
**SPECIFIC CONSTRUCTION NOTES:**

OCCUR ON THE PLANS WHERE (2) IS INDICATED.

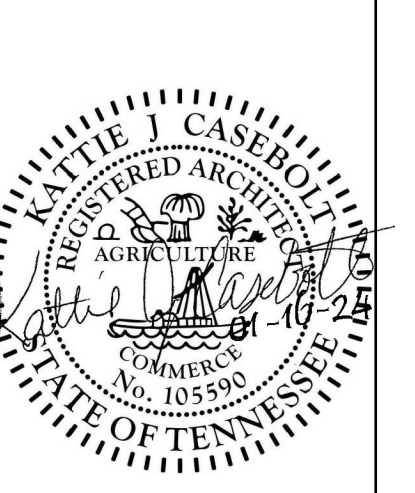
- (1) NEW PLASTIC LAMINATE COUNTERTOP ATTACHED TO EXISTING SUPPORTS/BRACKETS.
- (2) NEW 3"Ø GROMMETS, MIN OF 2" FROM ADJACENT WALL TO OUTSIDE DIAMETER OF GROMMET.
- (3) NEW 3/4" x 1 1/2" HIGH PLASTIC LAMINATE BACKSPASH AS INDICATED ON PLAN. ALL OPEN ENDS SHALL BE MITERED BACK FROM OPEN EDGE AT A 45° ANGLE JUST LIKE THE DEMOLISHED BACKSPASHES.



REVISIONS:  
1 2-2-2024



SEAL:



THIS DRAWING AND THE DESIGN THEREON IS THE PROPERTY OF COLLECTIVE ARCHITECTURE COMPANY. THEIR USE WITHOUT WRITTEN LICENSE IS PROHIBITED. NOT VALID FOR USE UNLESS SEAL IS AFFIXED AND DATED.

**COLLECTIVE**  
ARCHITECTURE COMPANY  
236 E. MARKET STREET  
KINGSPORT, TN 37660  
PH: 423.398.6200

INTERIOR MODIFICATIONS FOR  
**SULLIVAN COUNTY**  
**HEALTH DEPARTMENT**  
154 BLOUNTVILLE BYPASS  
BLOUNTVILLE, TENNESSEE 37617

DRAWN BY: SC  
DATE: 1-16-2024  
PROJECT #: 23-047

REVISIONS:  
1 2-2-2024

SHEET DESCRIPTION:  
PARTIAL DEMOLITION & PROPOSED NURSE STATION AREA PLANS

SHEET NUMBER:  
**A102**

CONTRACTOR SHALL INSPECT ALL EXISTING CONDITIONS TO ENSURE NO DISCREPANCIES WITH CONSTRUCTION DOCUMENTS. LAYOUT WALLS AND VERIFY ALL CRITICAL DIMENSIONS ARE CORRECT PRIOR TO CONSTRUCTION. ANY ISSUES SHALL BE BROUGHT TO THE ATTENTION OF THE ARCHITECT IMMEDIATELY.