

**Okeechobee Agri-Civic Center
 Phase I
 Okeechobee County, Florida**

Revisions

No.	Date	Description
08/07/08		LIGHTING REVISION
11/05/08		EM LIGHTING REVISION

Issued for: _____ Date: _____

CONFORMED 08/14/08

Pricing _____

Bidding _____

Permit _____

Construction _____

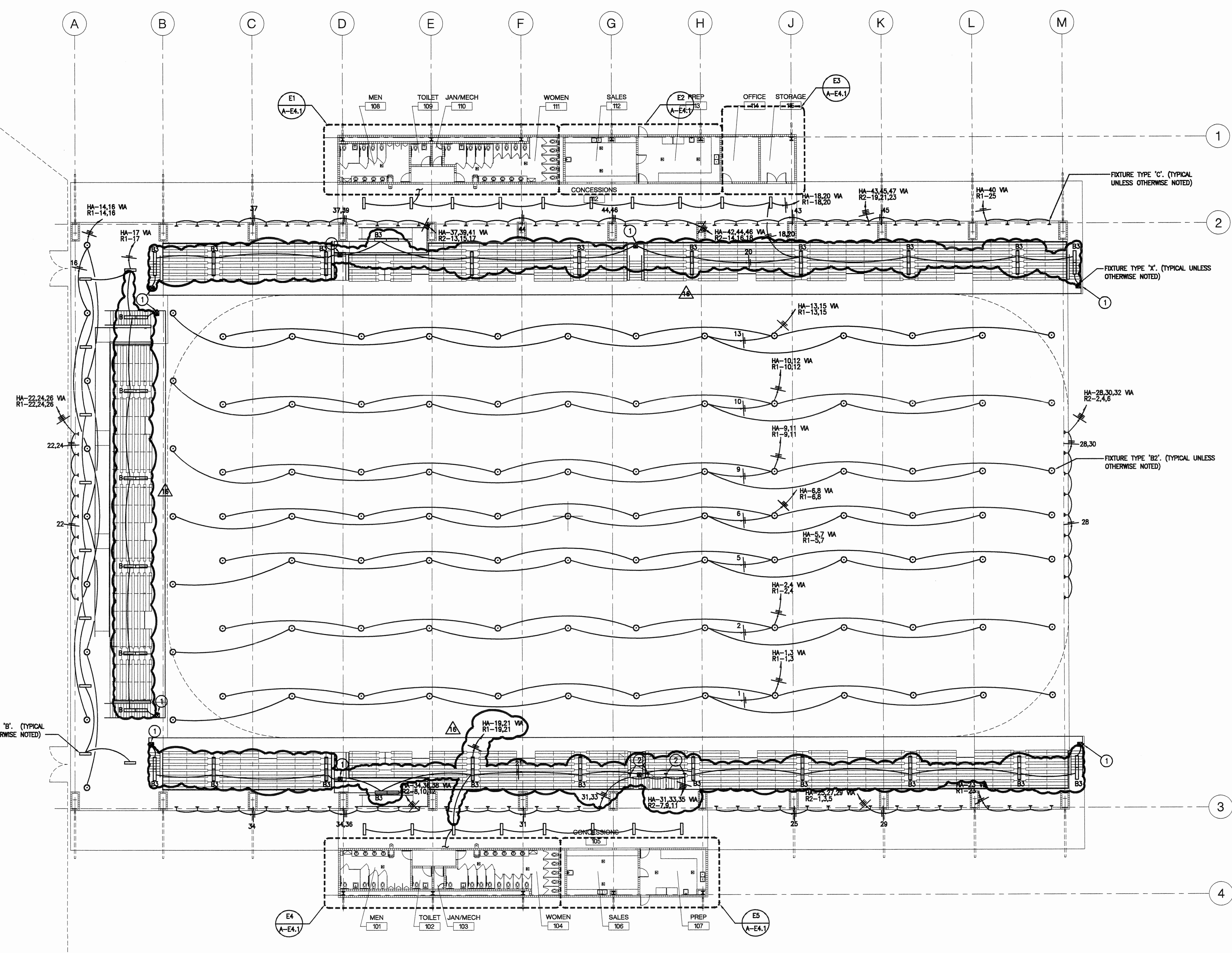
Project No.: 2282.00 Project Coord.: _____

Drawn By: RRS Project Mgr.: MRT

CAD File Name: 512A-E3-1

Drawing Title
**HORSE ARENA
 LIGHTING
 PLAN**

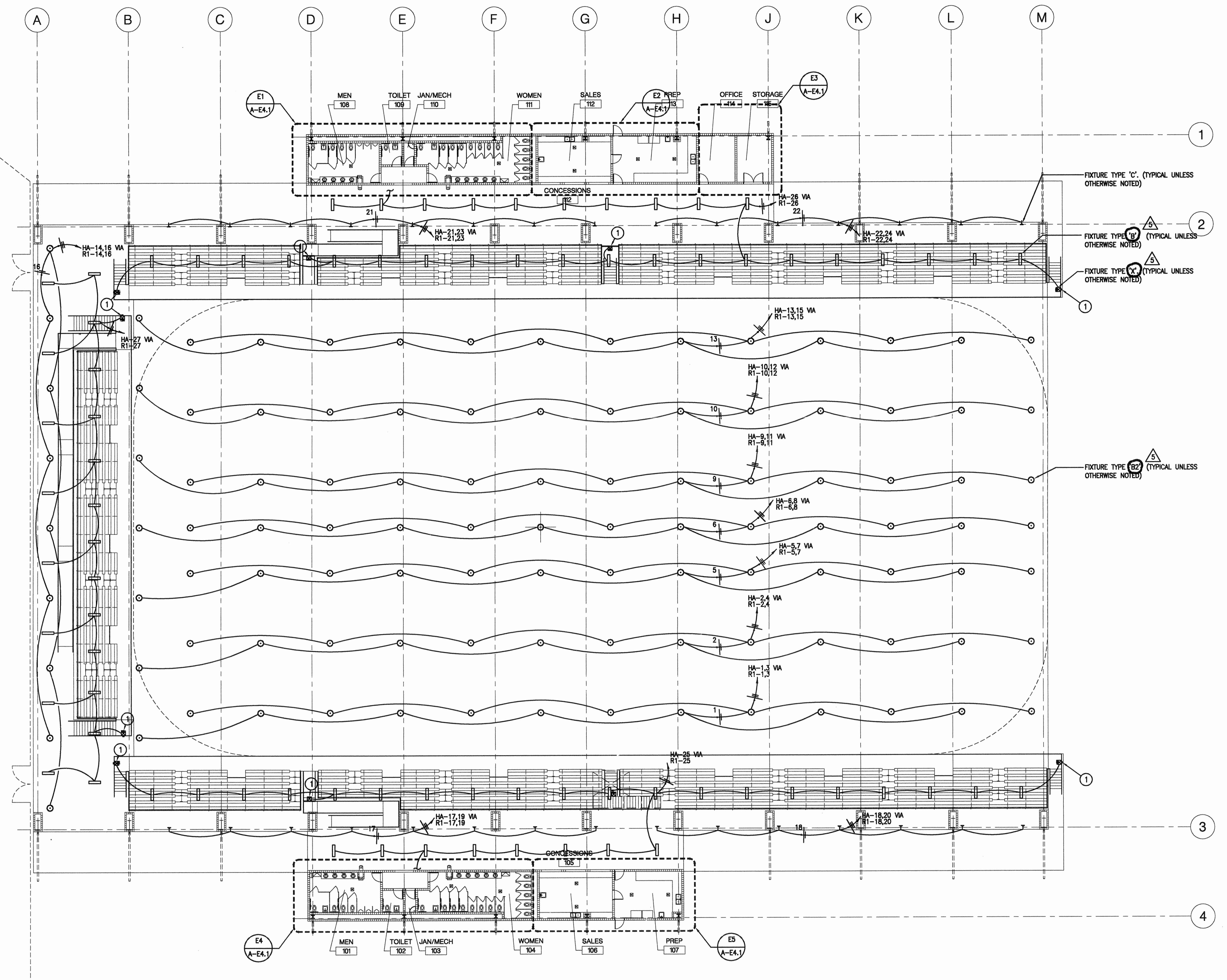
Seal _____ Drawing No.
A-E3.1a



E1 HORSE ARENA LIGHTING PLAN (BID ALTERNATE)
 SCALE: 1/16"=1'-0"

KEYNOTES:

- 1 CONTRACTOR TO PROVIDE PAINTED TUBE STEEL FOR MOUNTING OF EXIST SIGNS TO STRUCTURE AT AN ELEVATION OF 10'-0" ABOVE WALKING SURFACE.
- 2 CONTRACTOR TO PROVIDE PAINTED SECONDARY STEEL FOR MOUNTING OF LIGHT FIXTURES TO STRUCTURE ABOVE BROADCAST BOOTH.



E1 HORSE ARENA LIGHTING PLAN
SCALE: 1/16"=1'-0"

KEYNOTES:
 1 CONTRACTOR TO PROVIDE PAINTED TUBE STEEL FOR MOUNTING OF EXIST SIGNS TO STRUCTURE AT AN ELEVATION OF 10'-0" ABOVE WALKING SURFACE.

HHCP
 Heiman Hurley Charvat Peacock Architects, Inc.
 Mechanical/Plumbing/Electrical
 1007 644-6556 FAX (407) 428-3299
 1007 644-6556 FAX (407) 428-3299
 Professional Engineers, Inc.
 Texas (713) 877-5450
 Florida (407) 660-9099
 Mechanical/Plumbing/Electrical
 4025 US Highway 1
 Houston, TX 77053
 713 877-5450
 407 660-9099
 www.hhcp.com

Okeechobee Agri-Civic Center
 Phase I
 Okeechobee County, Florida

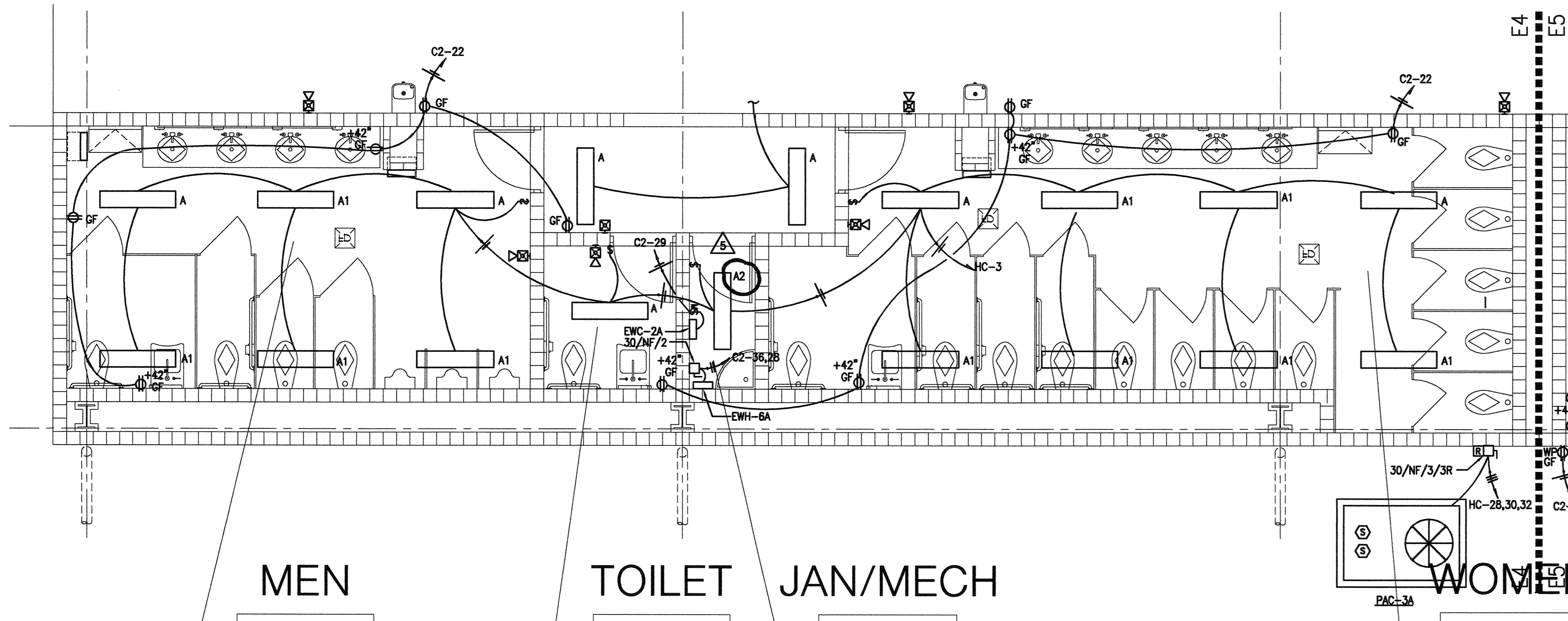
Revisions		
No.	Date	Description
09/14/08		ADD 3-1

Issued for:	Date:
<input type="checkbox"/> CONFIRMED	09/14/08
<input type="checkbox"/> Pricing	
<input type="checkbox"/> Bidding	
<input type="checkbox"/> Permit	
<input type="checkbox"/> Construction	

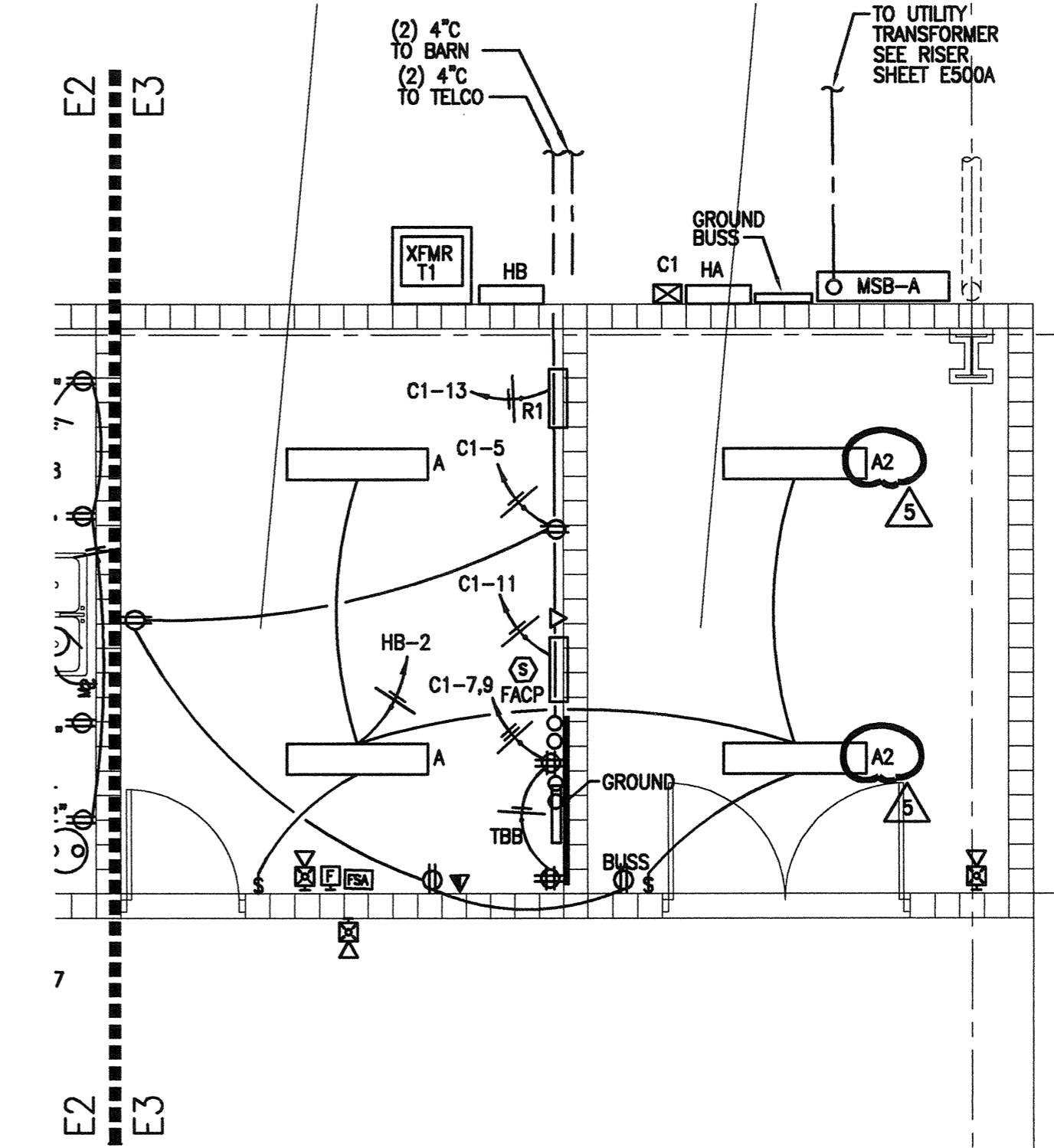
Project No.: 2282.00	Project Coord.:
Drawn By: RRS	Project Mgr.: MRT
CAD File Name: 512A-E3-1	

HORSE ARENA LIGHTING PLAN

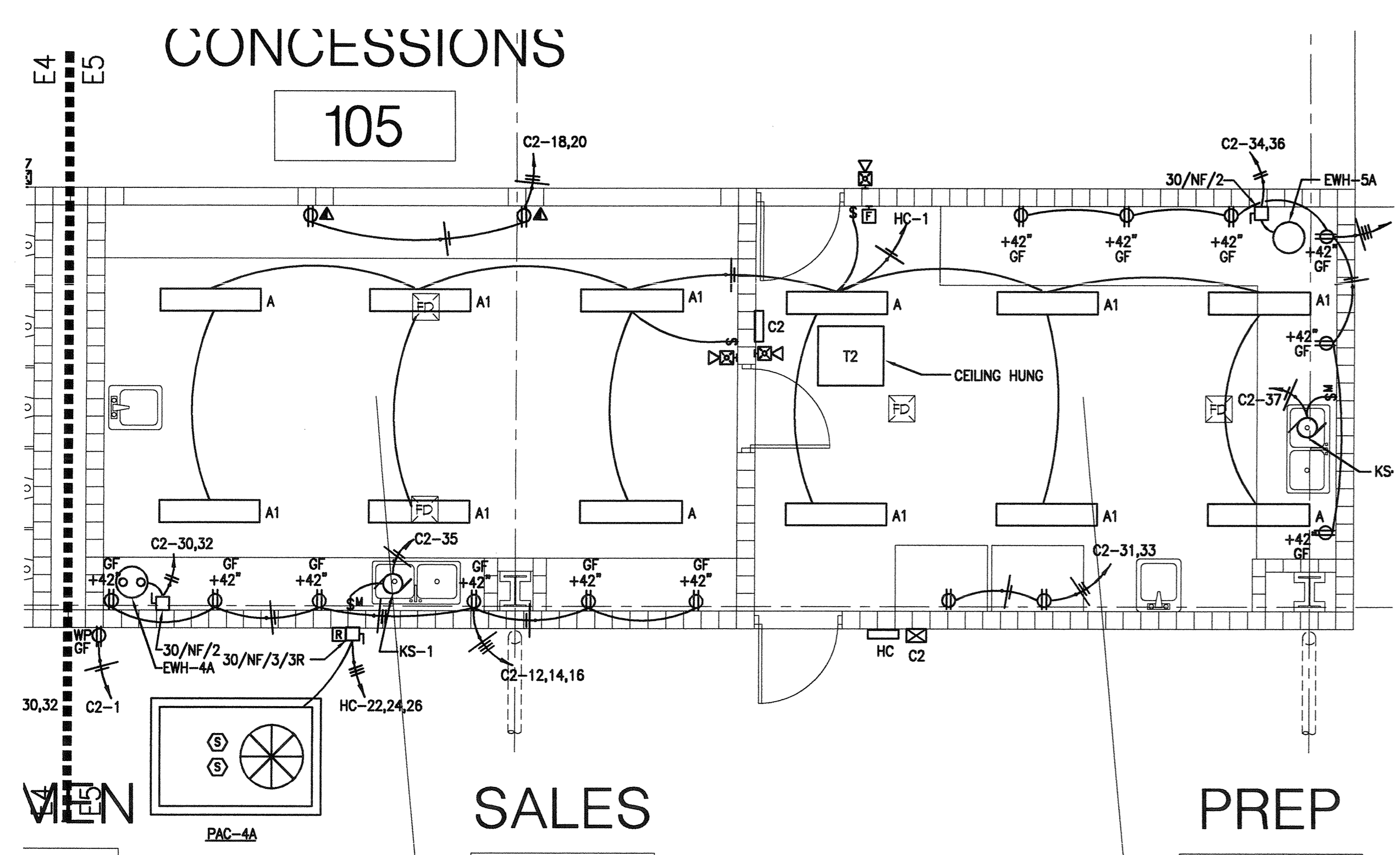
Scale:	Drawing No.:
<i>[Signature]</i>	A-E3.1



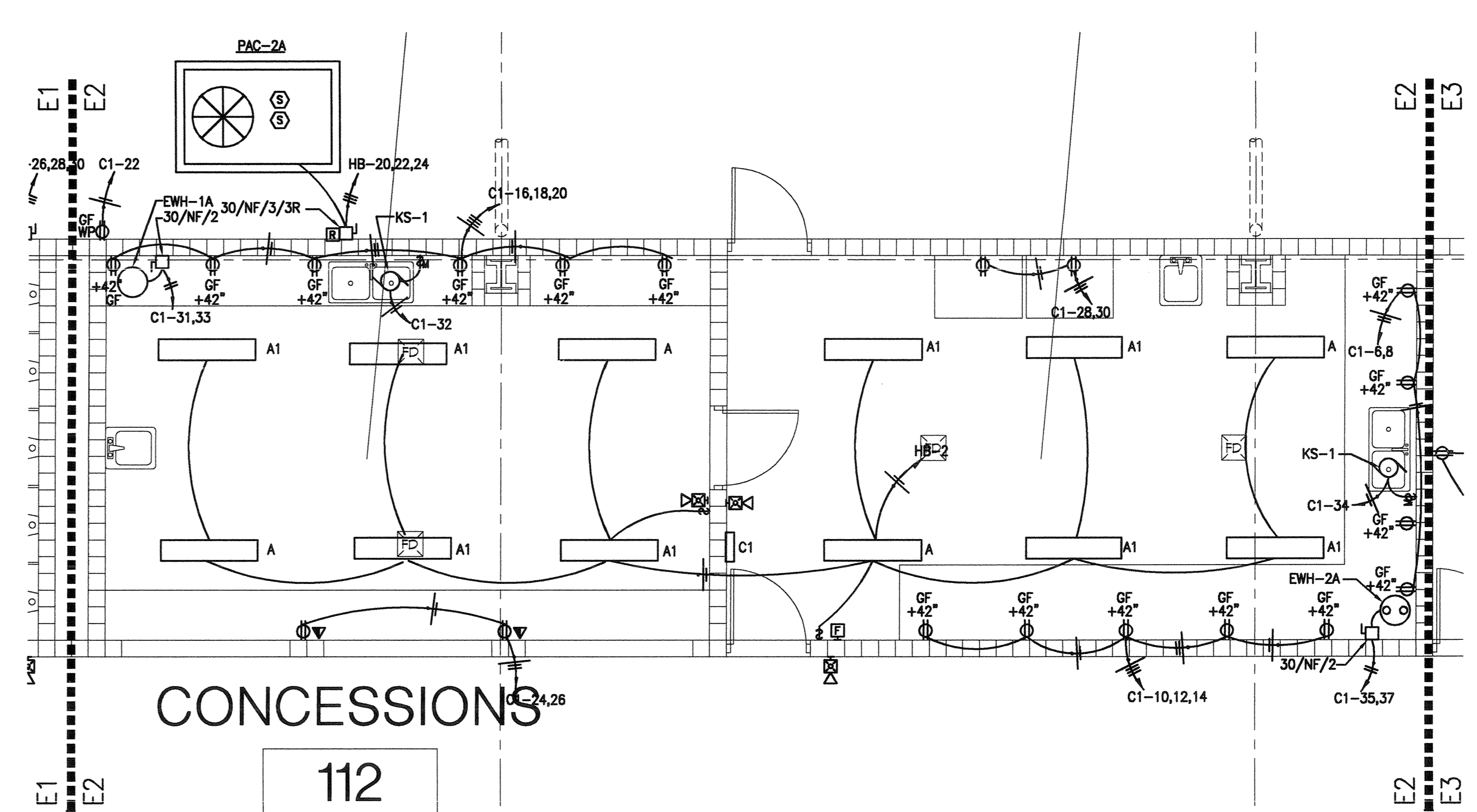
E4 ENLARGED RESTROOM ELECTRICAL PLAN
SCALE: 1/4"=1'-0"



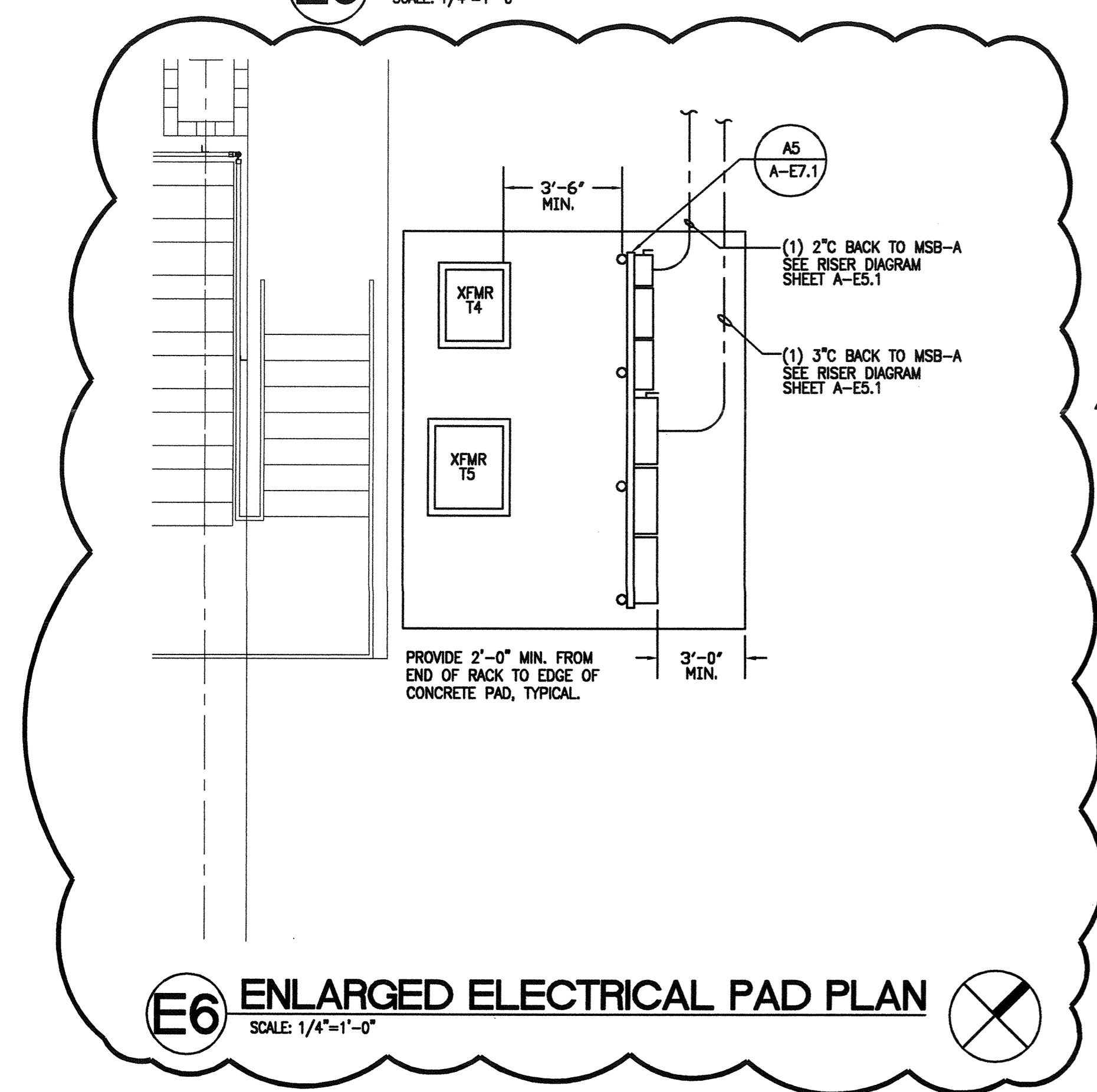
E3 ENLARGED ELECTRICAL ROOM PLAN
SCALE: 1/4"=1'-0"



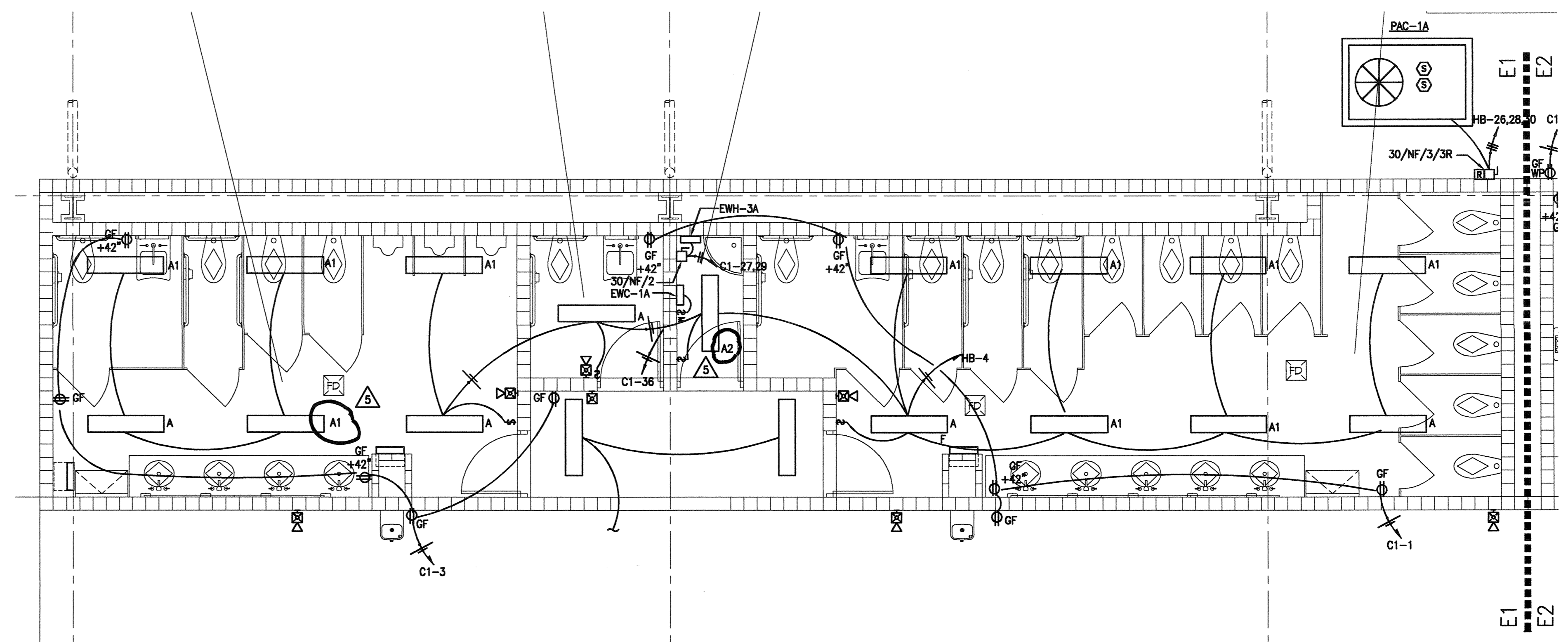
E5 ENLARGED CONCESSIONS ELECTRICAL PLAN
SCALE: 1/4"=1'-0"



E2 ENLARGED CONCESSIONS ELECTRICAL PLAN
SCALE: 1/4"=1'-0"



E6 ENLARGED ELECTRICAL PAD PLAN
SCALE: 1/4"=1'-0"



E1 ENLARGED RESTROOM ELECTRICAL PLAN
SCALE: 1/4"=1'-0"

GENERAL NOTES:
1. ALL FIXTURES THIS SHEET ARE 1 x 4 2LAMP FL 32W TB VAPOR TIGHT SURFACE MOUNTED.

HHCPC
Helman Hurley Charvat Peacock/Architects, Inc.
AA 000332
1222 West Park Drive, Suite 100
Aurora, Florida 32817-4899
407.644.2655 FAX 407.628.5099

CONSULTING ENGINEER
P
7600 Woodway, Suite 101
Houston, TX 77063
409.829.8100
www.hhcpc.com

Okeechobee Agri-Civic Center
Phase I
Okeechobee County, Florida

Revisions

No.	Date	Description
08/14/08	ADD 5-1	

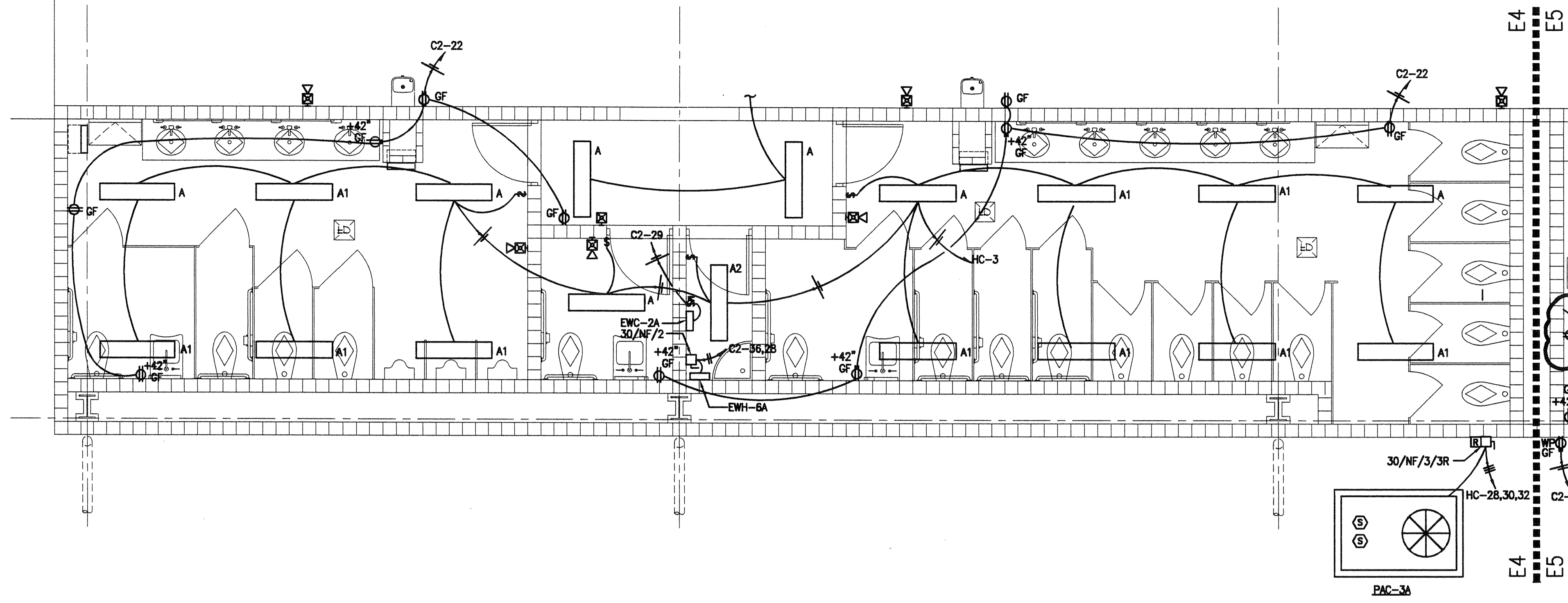
Issued for:

<input type="checkbox"/> CONFORMED	08/14/08
<input type="checkbox"/> Pricing	
<input type="checkbox"/> Bidding	
<input type="checkbox"/> Permit	
<input type="checkbox"/> Construction	

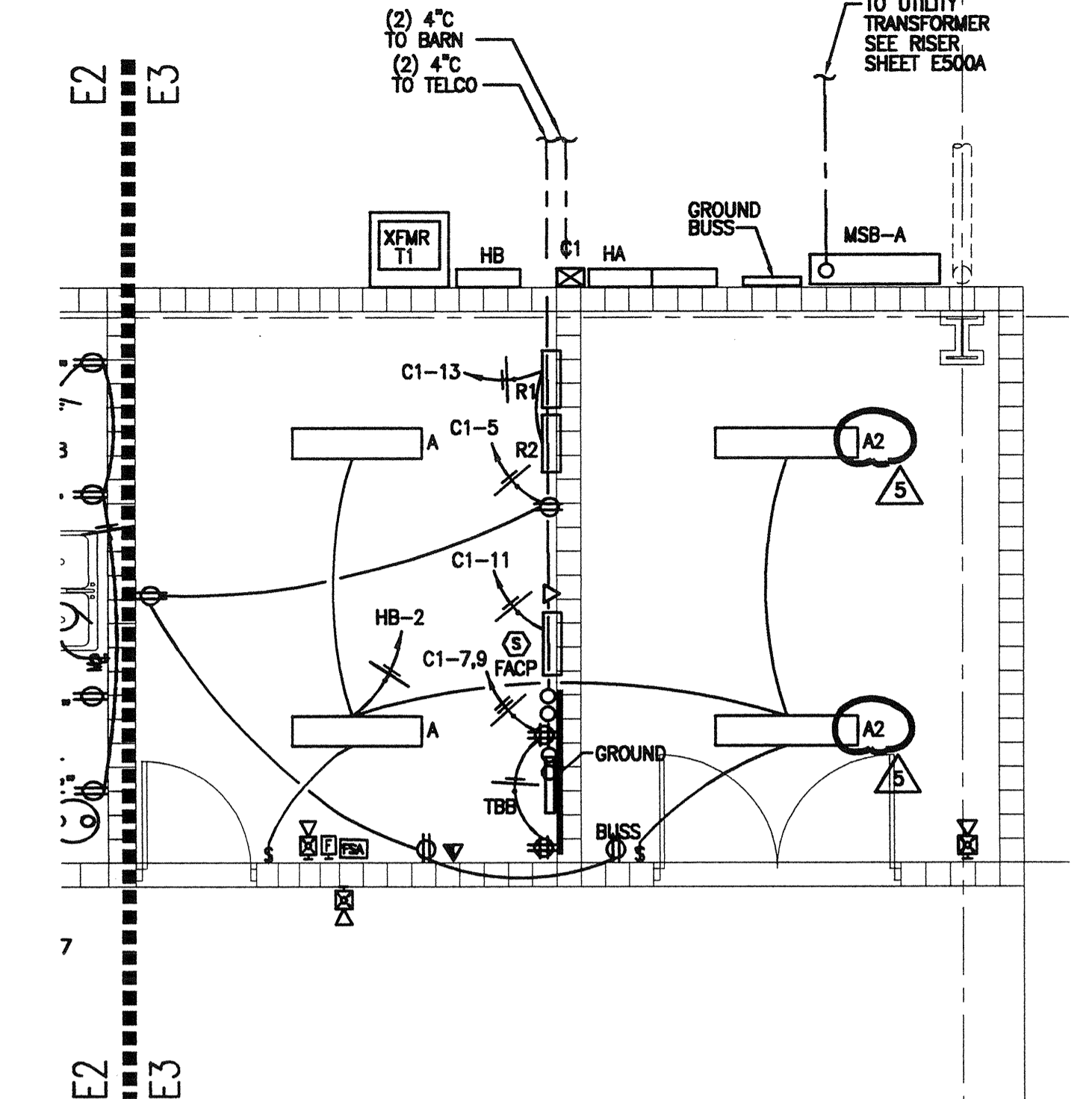
Project No.: 2282.00 **Project Coord.:**
Drawn By: RRS **Project Mgr.:** MRT
CAD File Name: 512A-E4-1

Drawing Title
HORSE ARENA
ENLARGED LIGHTING
AND POWER PLANS

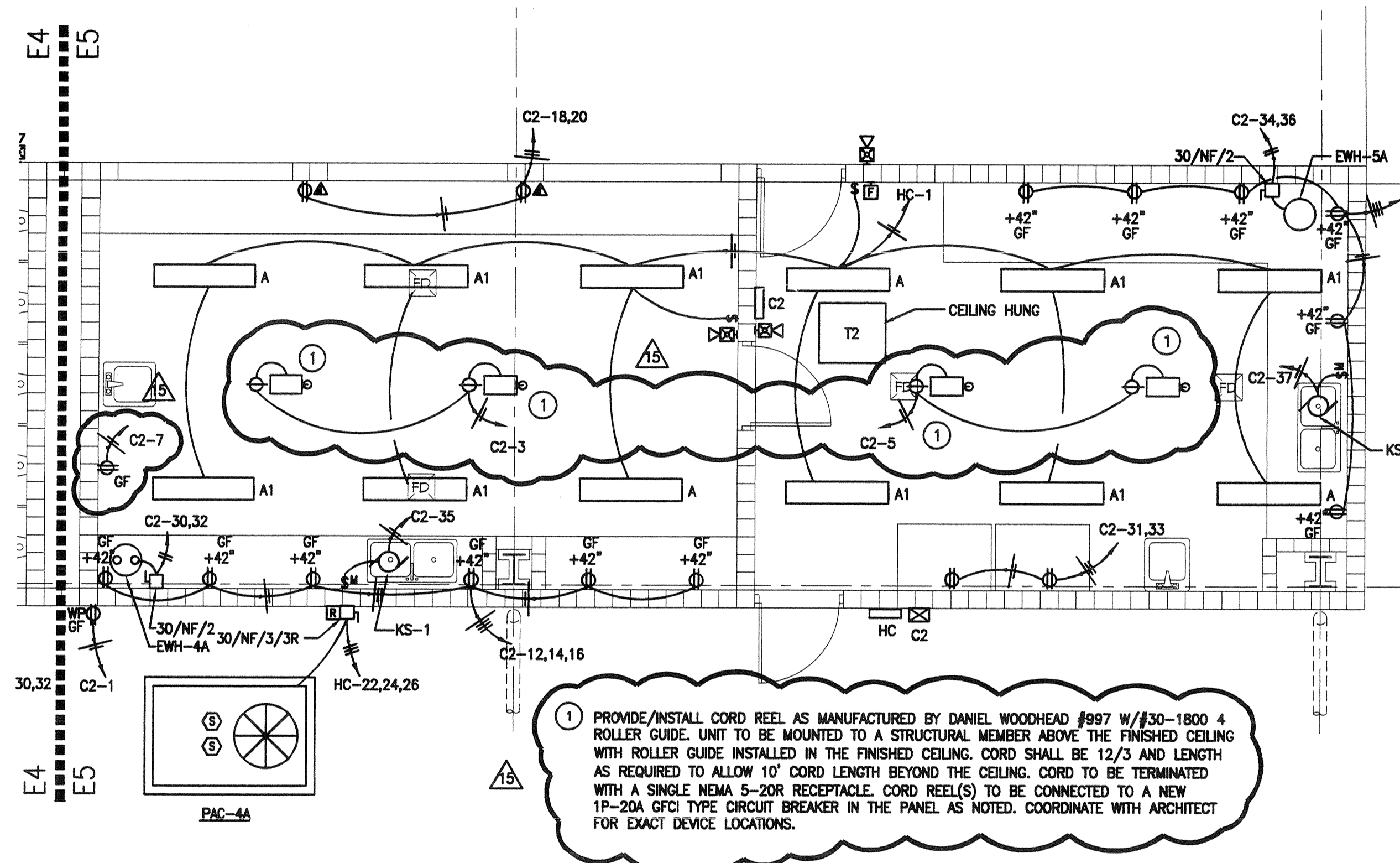
Seal
[Signature]
Drawing No.
A-E4.1



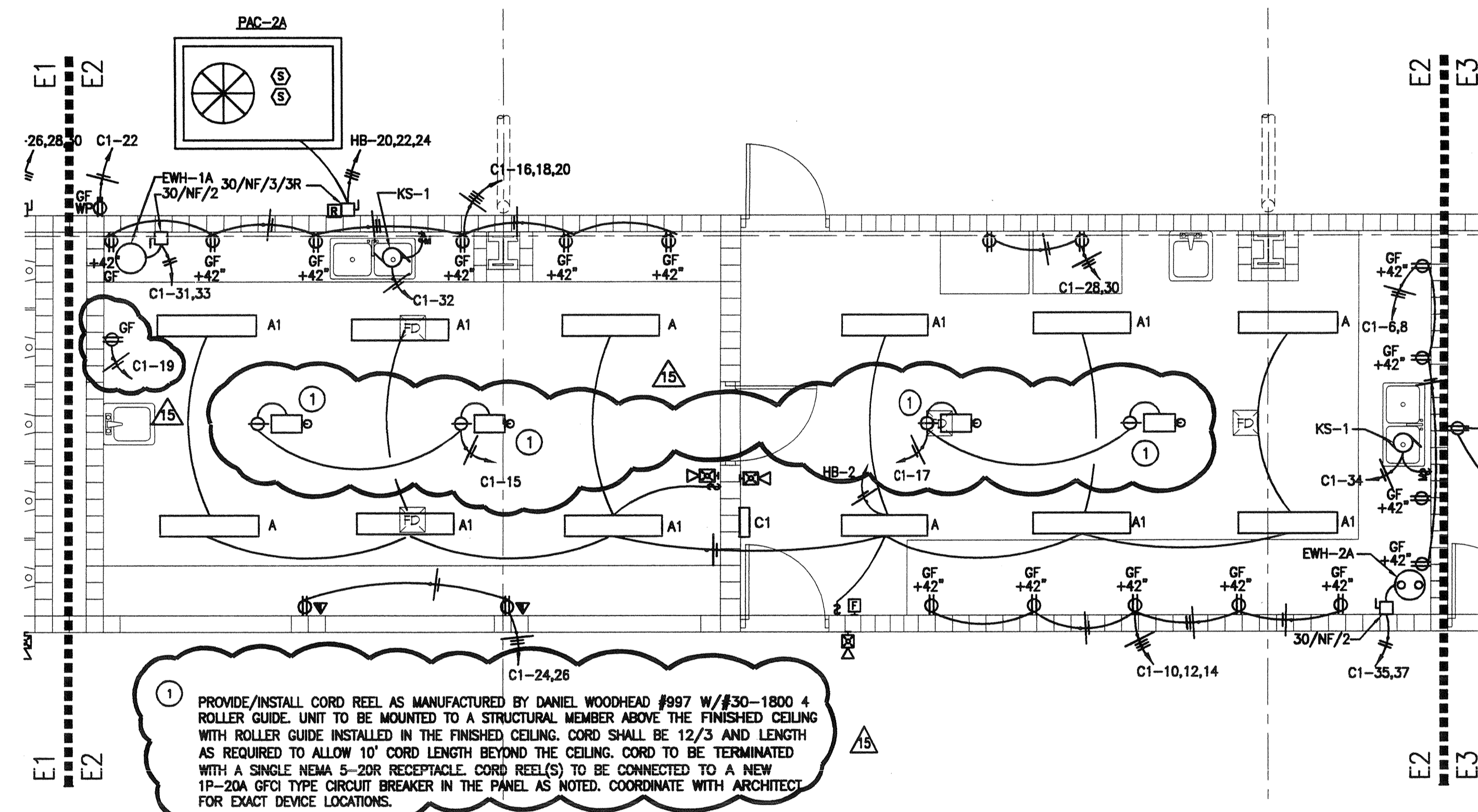
E4 ENLARGED RESTROOM ELECTRICAL PLAN
SCALE: 1/4"=1'-0"



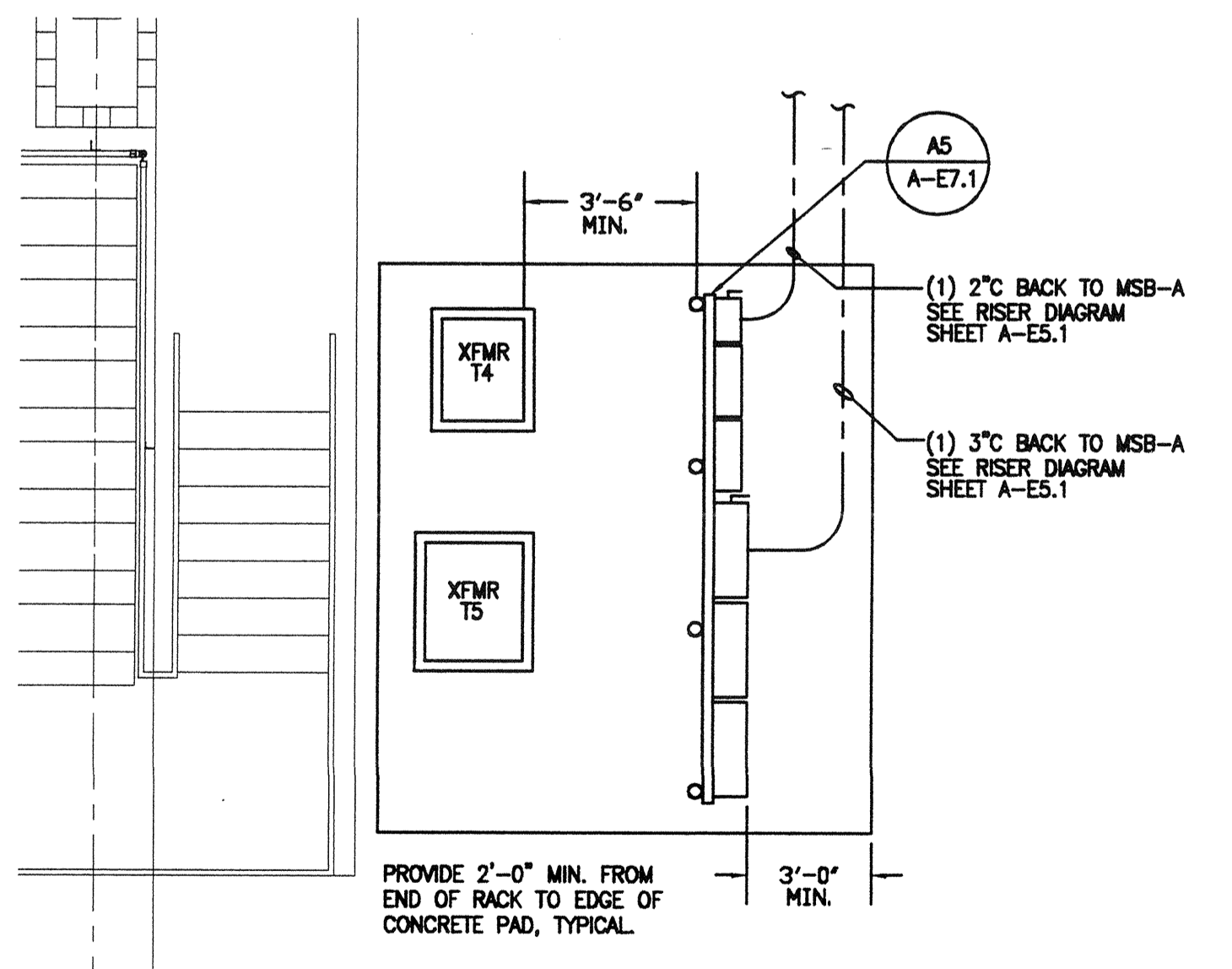
E3 ENLARGED ELECTRICAL ROOM PLAN (BID ALT.)
SCALE: 1/4"=1'-0"



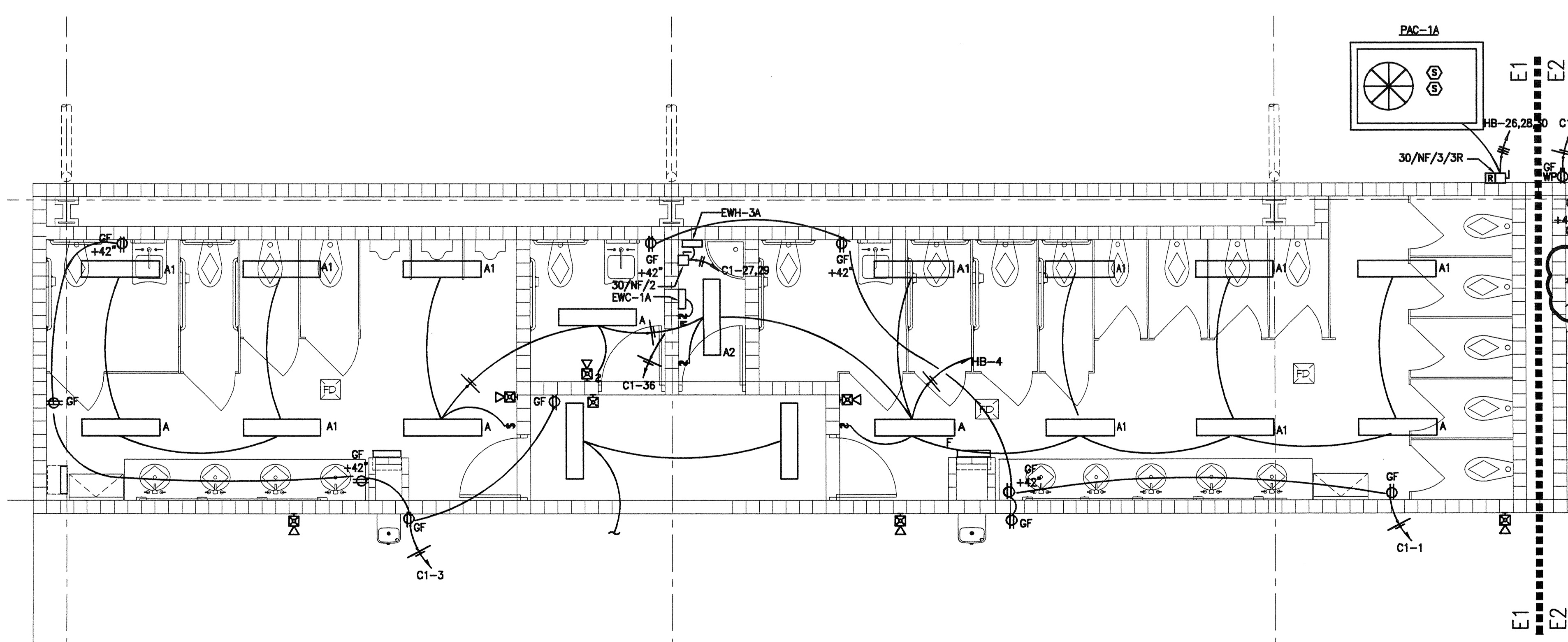
E5 ENLARGED CONCESSIONS ELECTRICAL PLAN
SCALE: 1/4"=1'-0"



E2 ENLARGED CONCESSIONS ELECTRICAL PLAN
SCALE: 1/4"=1'-0"



E6 ENLARGED ELECTRICAL PAD PLAN
SCALE: 1/4"=1'-0"



E1 ENLARGED RESTROOM ELECTRICAL PLAN
SCALE: 1/4"=1'-0"

GENERAL NOTES:
1. ALL FIXTURES THIS SHEET ARE 1 x 4 2LAMP FL 32W TB VAPOR TIGHT SURFACE MOUNTED.

HHCP
Heiman Hurley Charvat Peacock/Architects, Inc.
AA 000032

consulting engineers Inc.
222 West Mallard Boulevard
Tampa, FL 33609
PH 813-289-8000
FAX 813-289-8000
www.hhpcpa.com

Professional Engineer
P E
7660 Woodway, Suite 400
Tomball, TX 77454
PH 281-358-4000
FAX 281-358-4000
www.hhpcpa.com

Okeechobee Agri-Civic Center
Phase I
Okeechobee County, Florida

Revisions

No.	Date	Description
AA	11/05/03	CONCESSIONS ELEC. REVISIONS

Issued for: Date: 03/14/05

<input type="checkbox"/> CONFORMED	
<input type="checkbox"/>	
<input type="checkbox"/> Pricing	
<input type="checkbox"/> Bidding	
<input type="checkbox"/> Permit	
<input type="checkbox"/> Construction	

Project No.: 2282.00	Project Coord.:
Drawn By: RRS	Project Mgr.: MRT
CAD File Name: 512A-E4-1ALT	

**HORSE ARENA
ENLARGED LIGHTING
AND POWER PLANS**

Seal	Drawing No. A-E4.1A
------	-------------------------------

Revisions

No.	Date	Description
02/14/08	ADD 5-1	

Issued for: _____ **Date:** 02/14/08

CONFORMED

Pricing

Bidding

Permit

Construction

Project No.: 2282.00 Project Coord.: _____
 Drawn By: RRS Project Mgr.: MRT
 CAD File Name: S12A-E5-1

Drawing Title
FIRE ALARM AND ELECTRICAL RISER DIAGRAMS

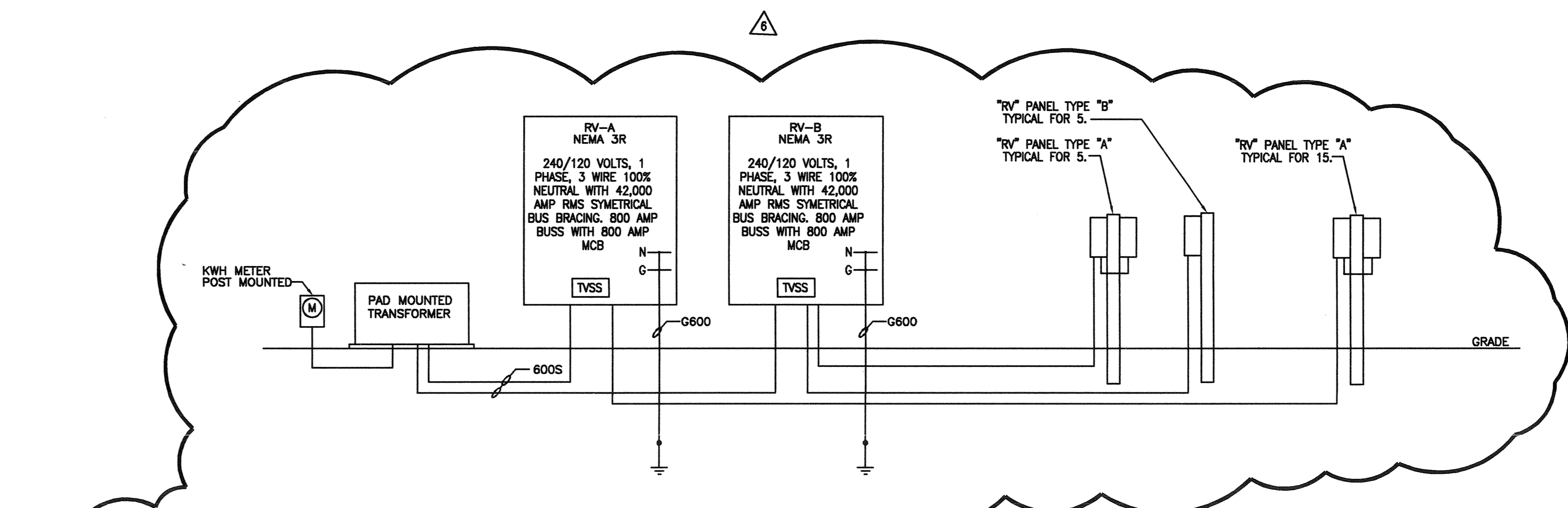
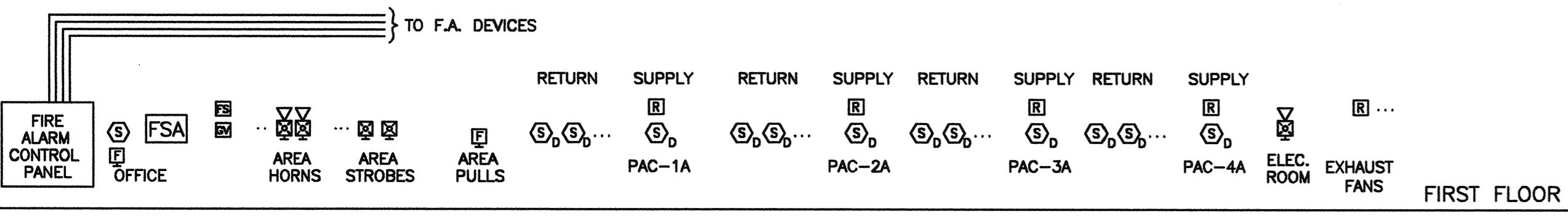
Seal _____ Drawing No. **A-E5.1**

FIRE ALARM SYMBOL LEGEND

NOTE: EVERY SYMBOL SHOWN ON LEGEND MAY NOT APPEAR ON DRAWINGS. REFER TO GENERAL ELECTRICAL NOTES FOR WALL-MOUNTED DEVICE MOUNTING HEIGHTS.

FOOT ADDED TO ANY SYMBOL INDICATES WALL MOUNTED.

⊠	MANUAL FIRE ALARM PULL STATION.
⊠	FIRE ALARM SPEAKER/HORN. SUBSCRIPT "W" INDICATES WHITE FINISH; OTHERWISE STANDARD RED COLOR. REFER TO DIV. 16 SPECIFICATIONS FOR SPEAKER AND/ OR HORN APPLICATIONS.
⊠	COMBINATION HORN/SPEAKER AND STROBE IN SINGLE COVER.
⊠	VISUAL ALARM STROBE.
⊠	SMOKE DETECTOR. NO SUBSCRIPT INDICATES IONIZATION TYPE. "D" INDICATES DUCT TYPE; "P" INDICATES PHOTOELECTRIC TYPE; "S" INDICATES SINGLE STATION TYPE.
⊠	HEAT DETECTOR; COMBINATION RATE OF RISE AND FIXED TEMPERATURE. "F" INDICATES FIXED TEMPERATURE ONLY; "R" INDICATES RATE OF RISE ONLY.
⊠	CARBON MONOXIDE DETECTOR.
⊠	BEAM SMOKE DETECTOR. "S" INDICATES SENDING UNIT. "R" INDICATES RECEIVING UNIT.
⊠	FIRE FIGHTER'S TELEPHONE JACK. "H" INDICATES PERMANENT EMERGENCY TELEPHONE HANDSET.
⊠	AUXILIARY CONTROL RELAY. "2" INDICATES TWO RELAYS REQUIRED FOR FIRE FIGHTER OVERRIDE CONTROL.
⊠	FIRE/SMOKE DUCT DAMPER WITH MOTOR ACTUATOR (BY DIV. 15). PROVIDE FIRE ALARM CONTROL RELAYS AND ADDRESSABLE MODULE.
⊠	TERMINAL CABINET FOR FIRE ALARM SYSTEM WIRING.
⊠	FIRE ALARM CONTROL PANEL.
⊠	FIRE ALARM ANNUNCIATOR PANEL.
⊠	FIRE ALARM TRANSPONDER.
⊠	SPRINKLER SYSTEM GATE VALVE MONITOR SWITCH.
⊠	SPRINKLER SYSTEM WATER FLOW SWITCH.
⊠	TAMPER SWITCH.
⊠	SPRINKLER SYSTEM ALARM CHECK VALVE.
⊠	SPRINKLER SYSTEM ELECTRICAL BELL. BELL BY DIV.15; DIV. 16 PROVIDES ONLY 120V POWER.
⊠	SPRINKLER SYSTEM PRE-ACTION CONTROL PANEL.
⊠	DOOR HOLDER.



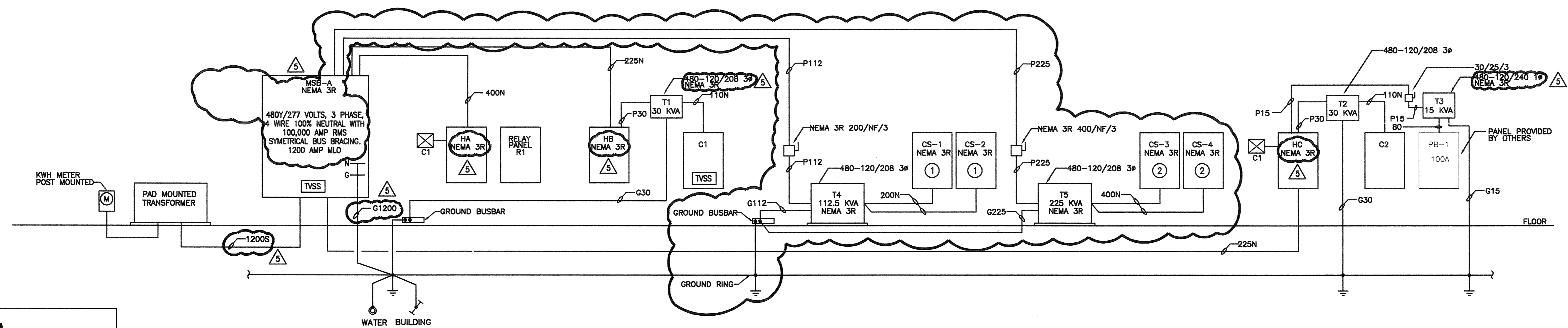
E3 RV ELECTRICAL RISER DIAGRAM

NTS

E2 HORSE ARENA FIRE ALARM RISER DIAGRAM

NTS

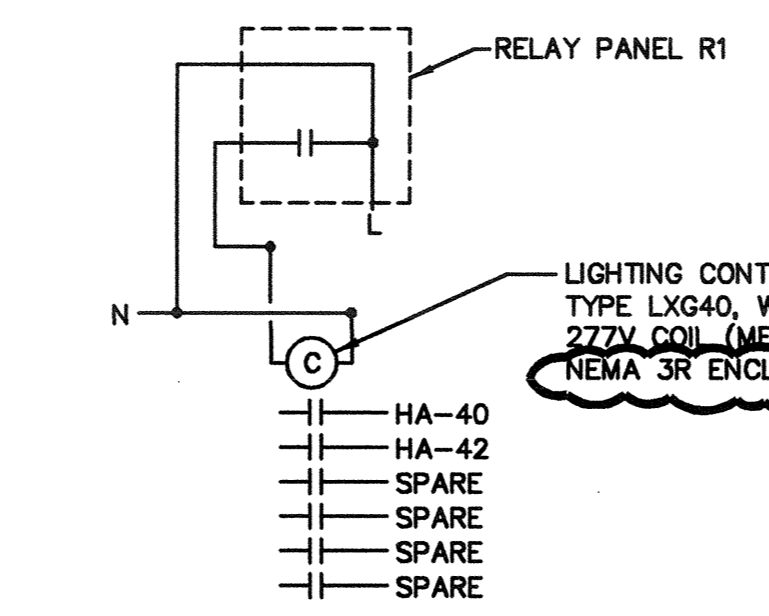
- KEYNOTES:**
- NEMA 3R, 200 AMP COMPANY SOUND SWITCH, CUB CAT#PBS-2010W-P/SP SURFACE MOUNT.
 - NEMA 3R, 400 AMP COMPANY SOUND SWITCH, CUB CAT#PBS-4020W-C/SP SURFACE MOUNT.



LOAD ANALYSIS FOR MSB-A

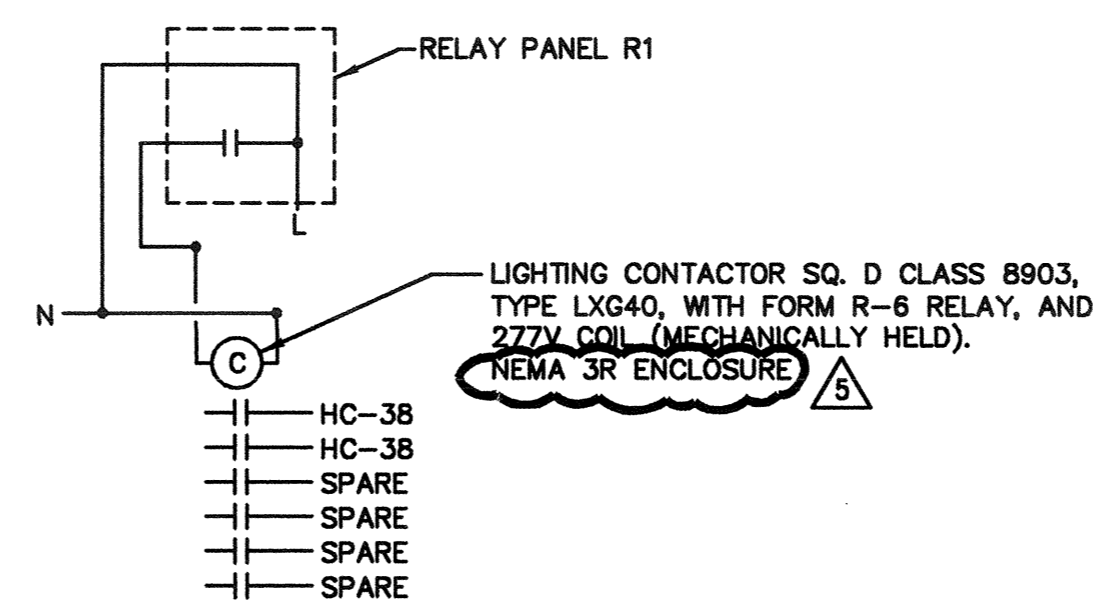
SERVICE VOLTAGE: 480/277 3P 4W
 LIGHTED AREAS SERVED: 76,913 SQ FT AS Restaurants

SERVED	COIN (KVA)	NEC (KVA)	PHASE (AMPS)	NEUT (AMPS)	REMARKS ON NEC COMPUTATION
LIGHTING	87	192	231	231	SOFT from NEC 220-3(b) > Indoor + Nondiv COIN = SOFT div as Restaurants from NEC 220-11, then mult. by 125%
RECEPTACLES	17	14	16	0	Quantity = 96 at 180VA per applied NEC table 220-13 compared to 0 at 1 VA/SF
ELECTRIC HEAT	0	0	0	0	No Electric Heat
A/C REFRIGERATION	29	29	35	0	100% Connected - NEC 440-33
MISC MOTORS	77	80	96	7	100% Conn + 25% Lgt - NEC 430-24
WATER HEATING	15	15	18	0	100% Connected - NEC 220-10(b) (Does NOT include kitchen)
NONDIVERSIFIED LIGHTING	0	0	0	0	No Nondiversified Ltg
KITCHEN EQUIP	0	0	0	0	No Commercial Kitchen Equip
COMPUTERS	0	0	0	0	No Computer Load
MISC NONCONTINUOUS	333	333	401	0	100% Connected - NEC 220-10(b)
MISC CONTINUOUS	0	0	0	0	No Misc Noncontinuous Load
SPARE CAPACITY	0	0	0	0	
TOTAL	568	653	797	239	
SERVICE CAPACITY		1200	1200		
TOTAL SPARE CAPACITY		403	961		Service Capacity less NEC Load



FAN CONTACTOR 'C1'

NTS



FAN CONTACTOR 'C2'

NTS

FEEDER SCHEDULE

TAG	CONDUCTORS (AWG/KCML)	CONDUIT (INCHES)	NUMBER OF BETS	SEE KEY NOTE
P15	3#10, 1#10C	3/4	1	-
G15	1#8	1/2	1	-
P30	3#6, 1#10C	3/4	1	-
G30	1#6	1/2	1	-
P112	3#2/0, 1#6G	2	1	-
G112	1#1/0	3/4	1	-
P225	3#500, 1#3C	3	1	-
G225	1#2/0	3/4	1	-
B1	1#2, 1#6G	1/2	1	-
110N	1#1, 1#6G	1/2	1	-
200N	4#3/0, 1#6G	2	1	-
225N	1#7/0, 1#4C	2 1/2	2	-
400N	4#3/0, 1#3C	2	2	-
1200S	4#350	3	4	-
G1200	1#2/0	1	1	-
600S	3#350	3	2	-
600G	1#3/0	3/4	1	-