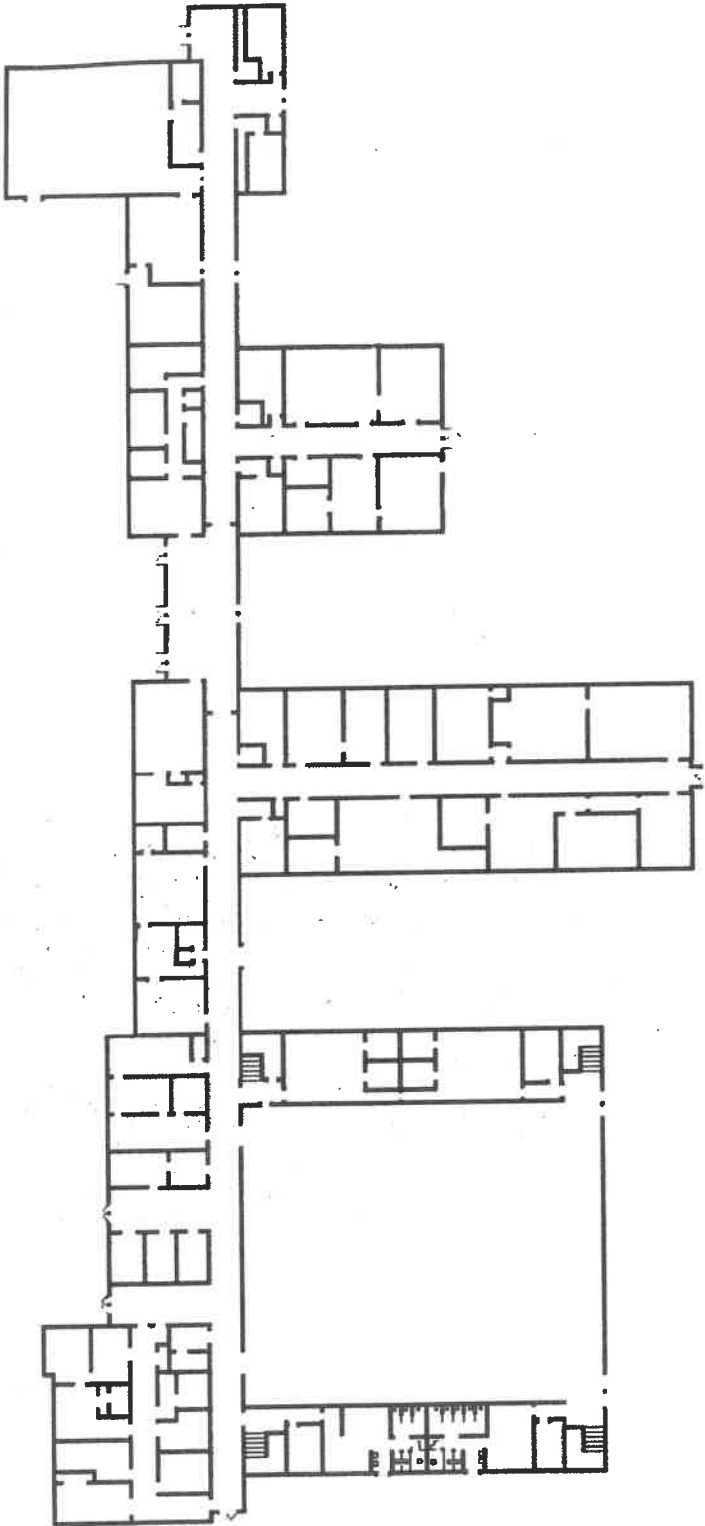


You Are Here ■

Primary ———→

Secondary ———→



HAWAII COMPLEX - ADMINISTRATION BUILDING
 OVERALL S.F. = 55,651

LEGEND
 ■ INSTRUCTIONAL
 ■ SUPPORT
 ■ HALL

Section 4.1 HC 2

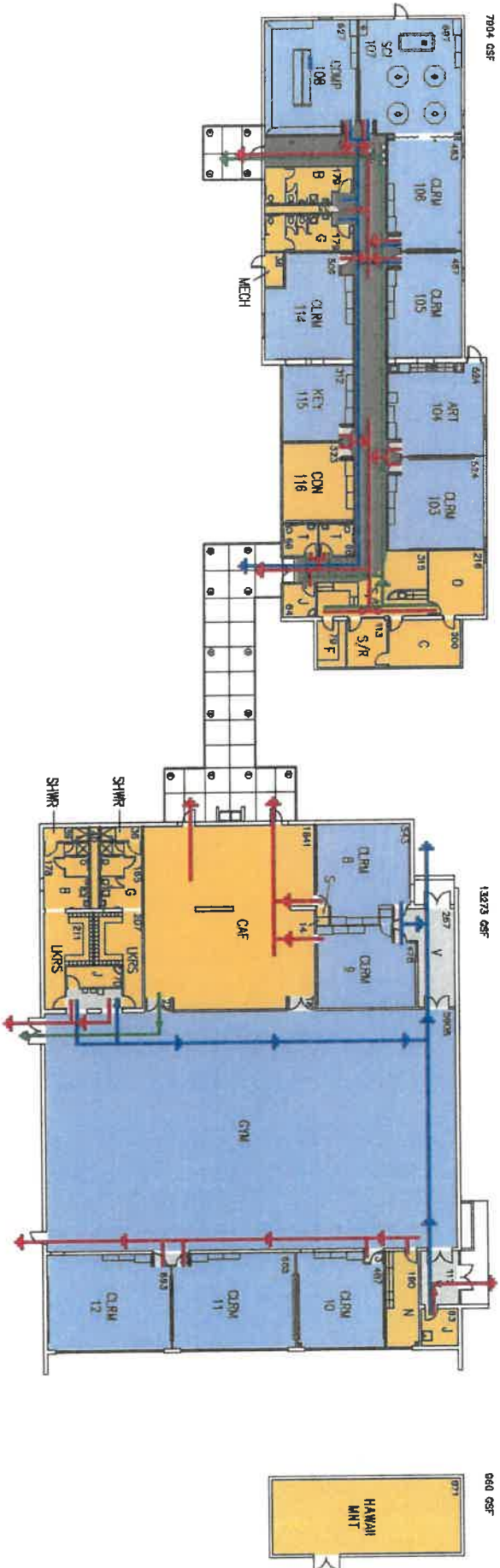


HAWAII COMPLEX - IIS BUILDING
 OVERALL S.F. = 18,445

LEGEND
 INSTRUCTIONAL
 SUPPORT
 HALL

- Primary
- Secondary
- Secondary

You are here



ACADEMY DEL SOL ALT. HIGH SCHOOL
 OVERALL S.F. = 21,177

- LEGEND**
- INSTRUCTIONAL
 - SUPPORT
 - HALL

Greer Stafford/ SJCJF, Inc.

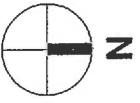
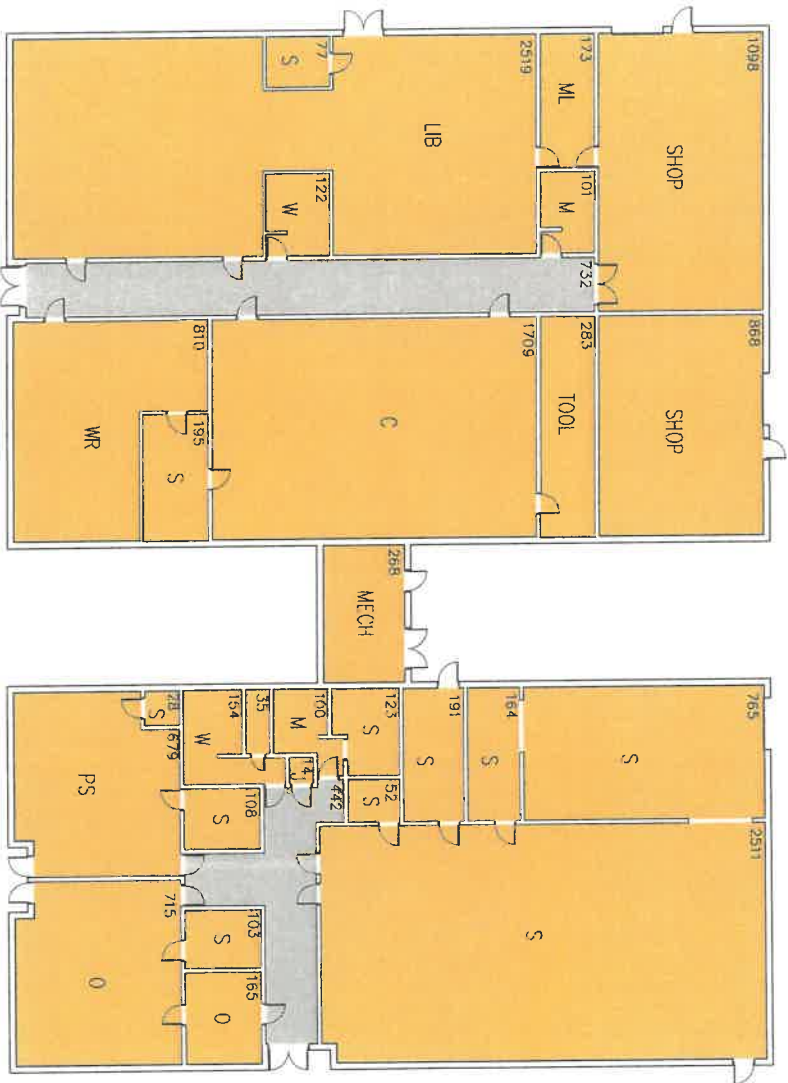
SPEED/Bid. C.

Section X.X.X

June 1, 2006

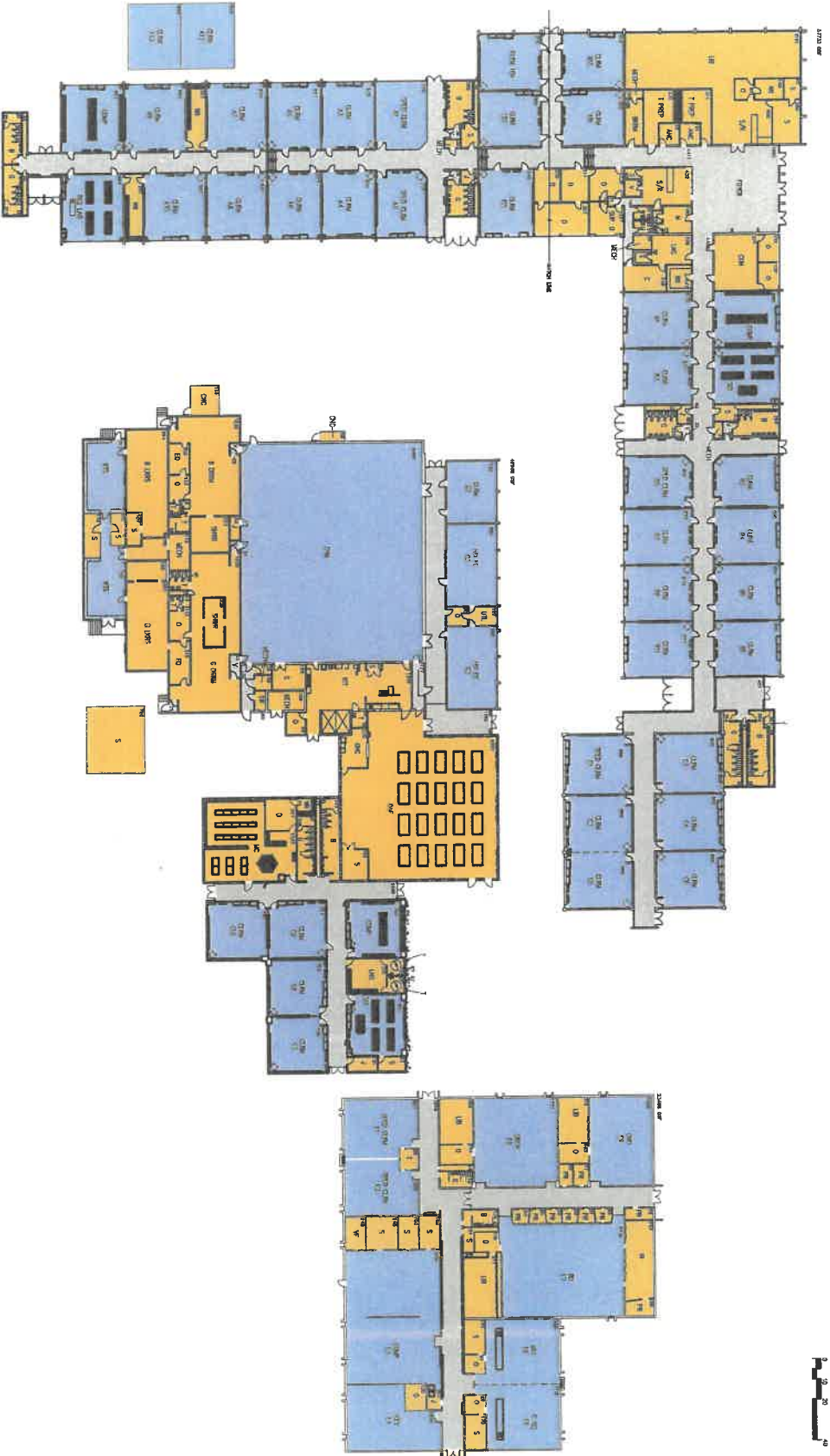


16710 GSF



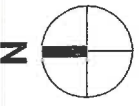
HAWAII COMPLEX - LEARNING RESOURCE CENTER / PRINT SHOP
 OVERALL S.F. = 16,710

LEGEND
 INSTRUCTIONAL
 SUPPORT
 HALL



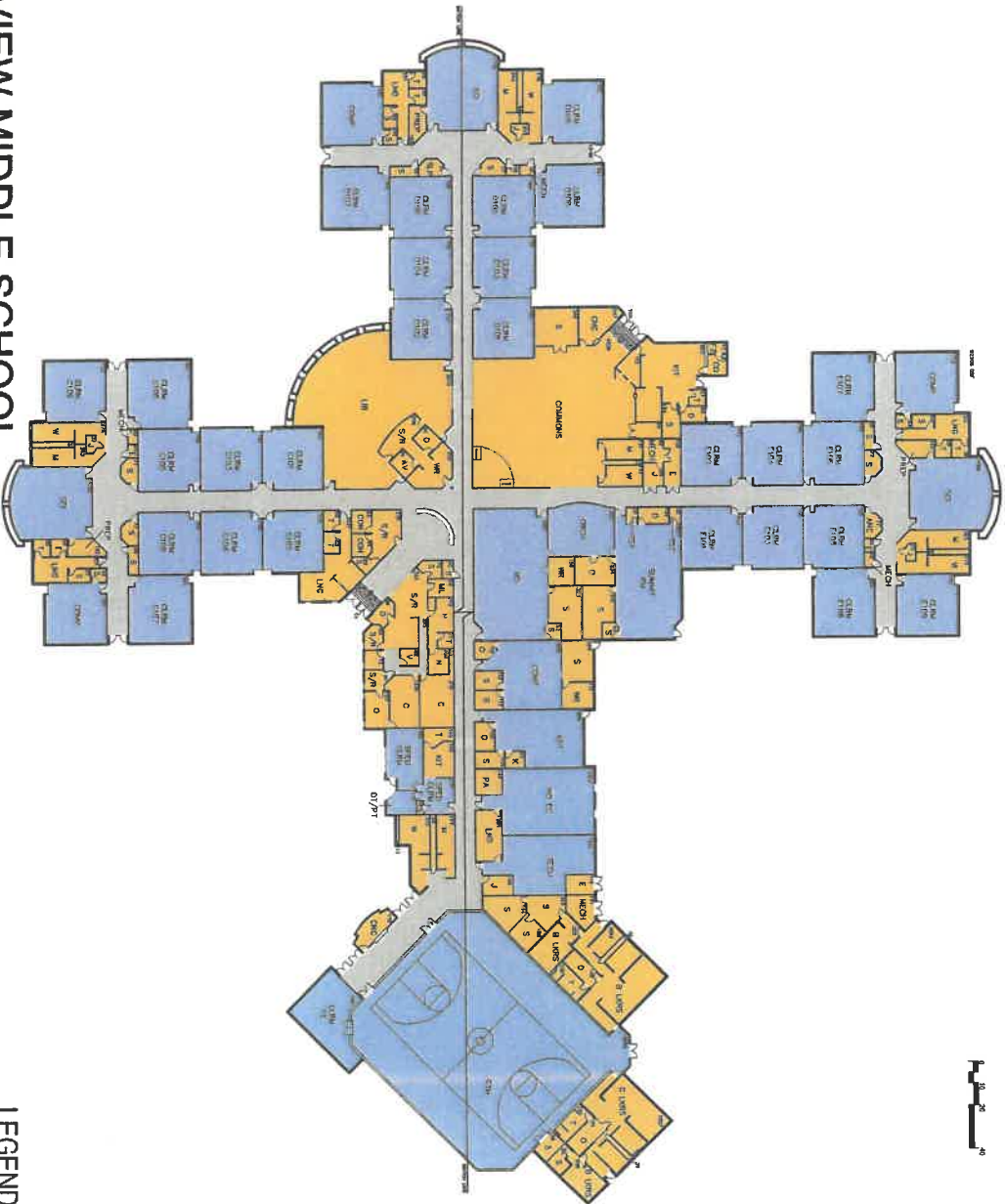
CHAPARRAL MIDDLE SCHOOL
 OVERALL S.F. = 124,175

LEGEND
 INSTRUCTIONAL
 SUPPORT
 HALL



HOLLOMAN MIDDLE SCHOOL
 OVERALL S.F. = 52,178

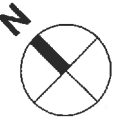
LEGEND
 ■ INSTRUCTIONAL
 ■ SUPPORT
 ■ HALL



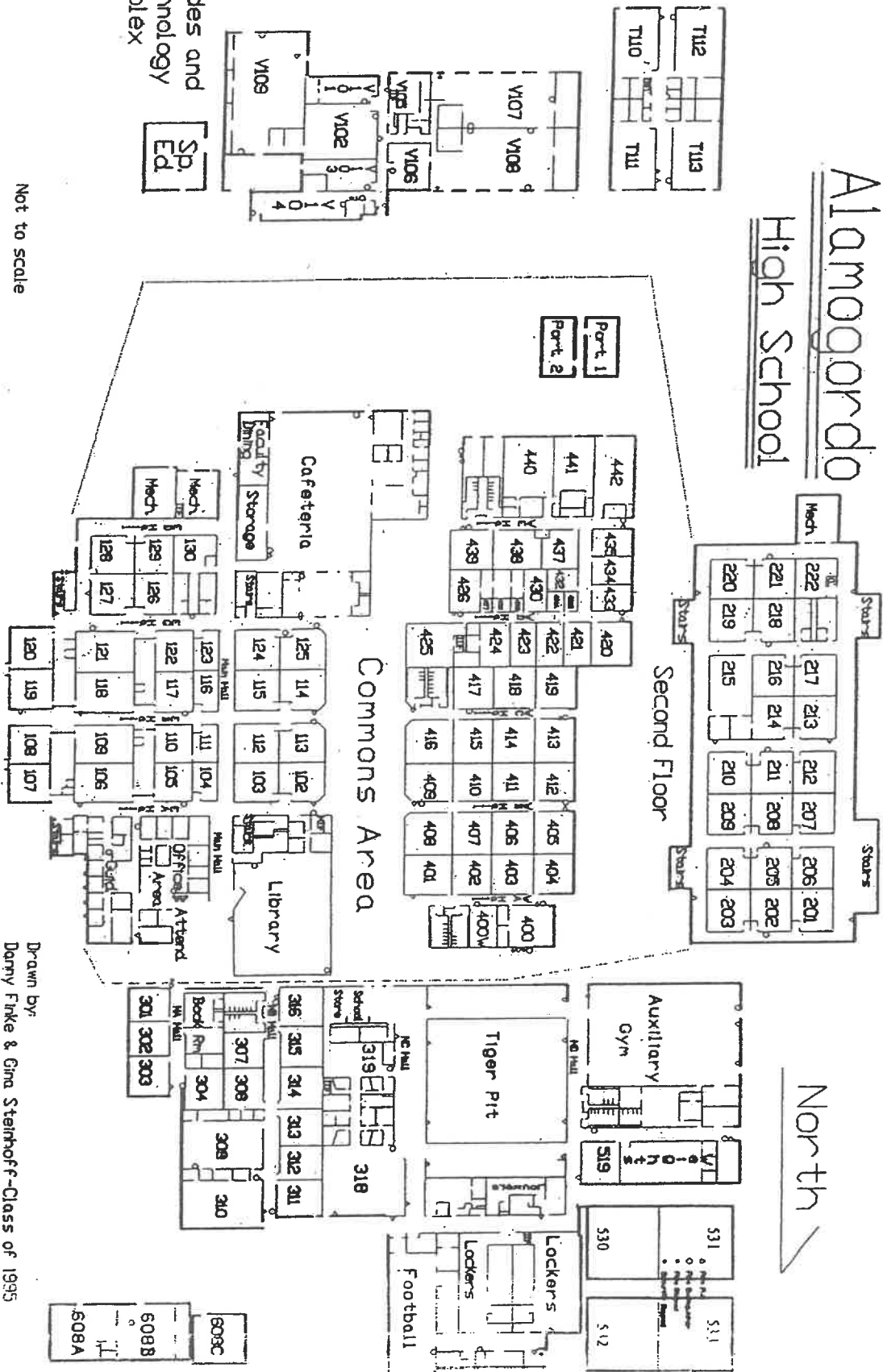
LEGEND
■ INSTRUCTIONAL
■ SUPPORT
■ HALL

MOUNTAIN VIEW MIDDLE SCHOOL

OVERALL S.F. = 92,038



Alamogordo High School

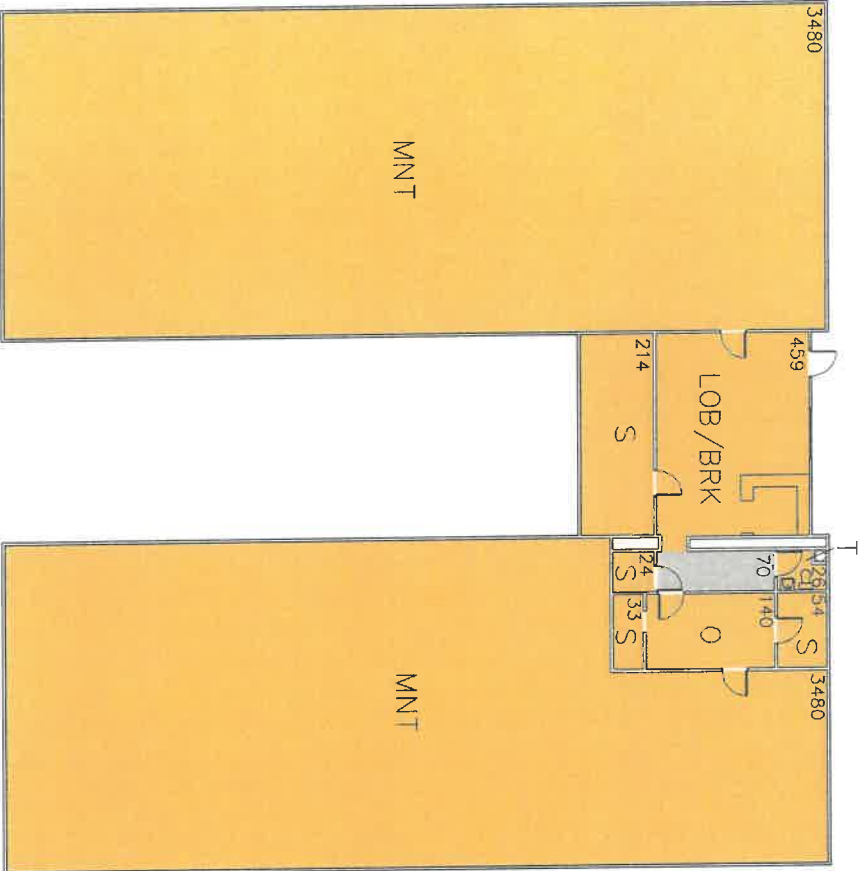


Not to scale

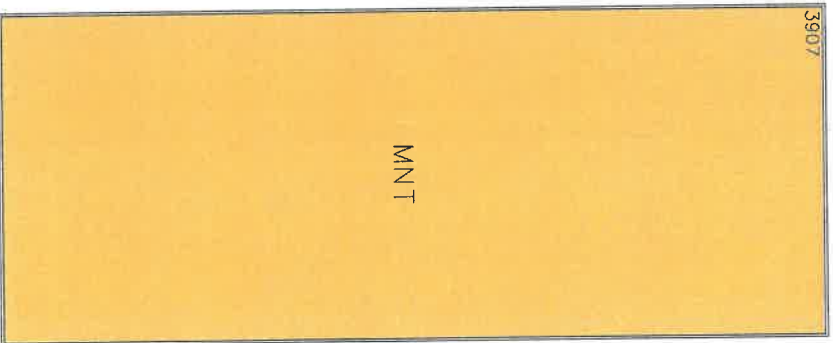
Drawn by:
 Danny Finke & Gina Steinhoff-Class of 1995

5 YEAR FACILITIES MASTER PLAN
 ALAMOGORDO PUBLIC SCHOOL DISTRICT

8687 GSF

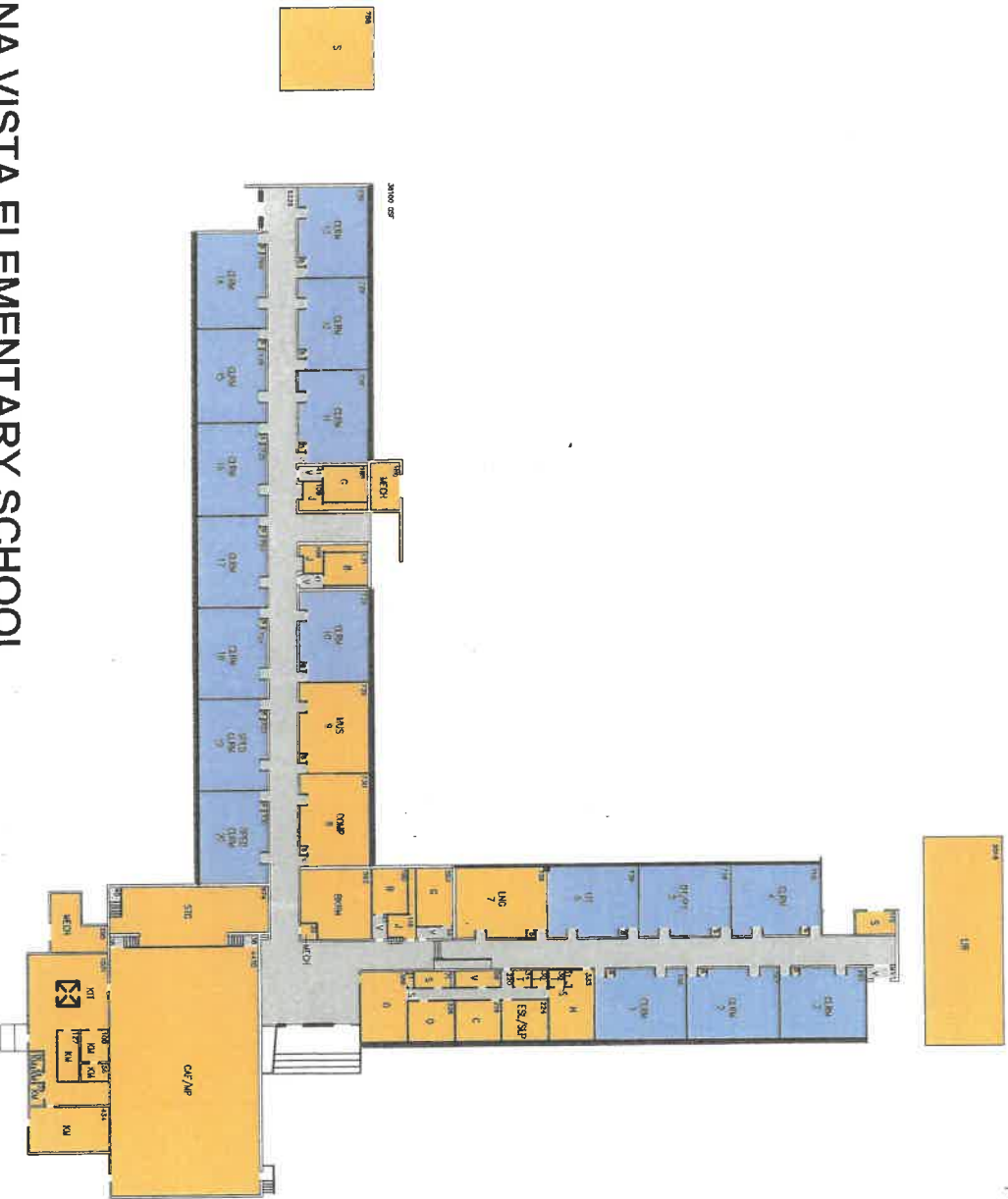


4000 GSF



MAINTENANCE BUILDINGS
 OVERALL S.F. = 12,687

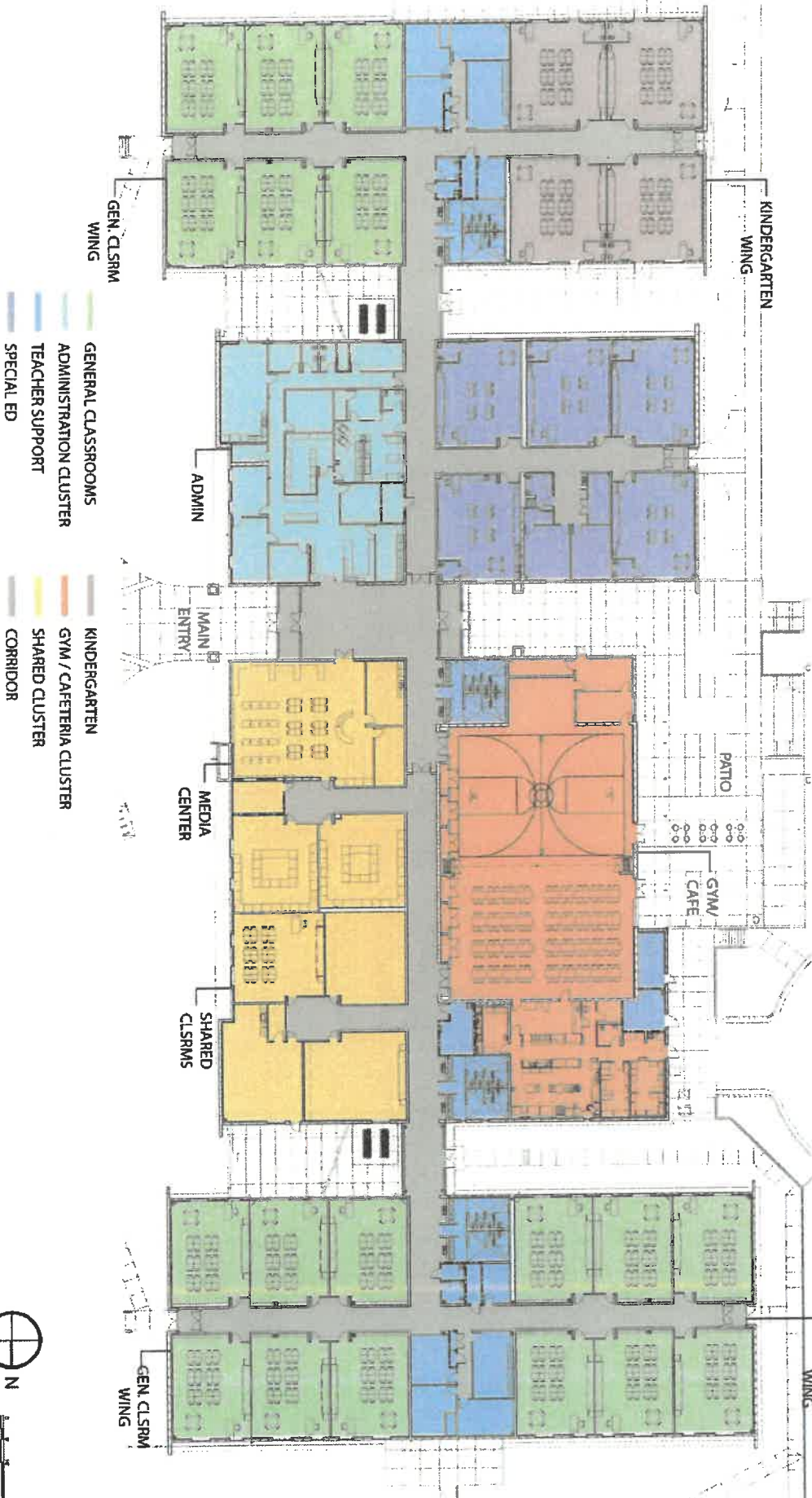
- LEGEND**
- INSTRUCTIONAL
 - SUPPORT
 - HALL



BUENA VISTA ELEMENTARY SCHOOL
 OVERALL S.F. = 36,200

LEGEND
 INSTRUCTIONAL
 SUPPORT
 HALL

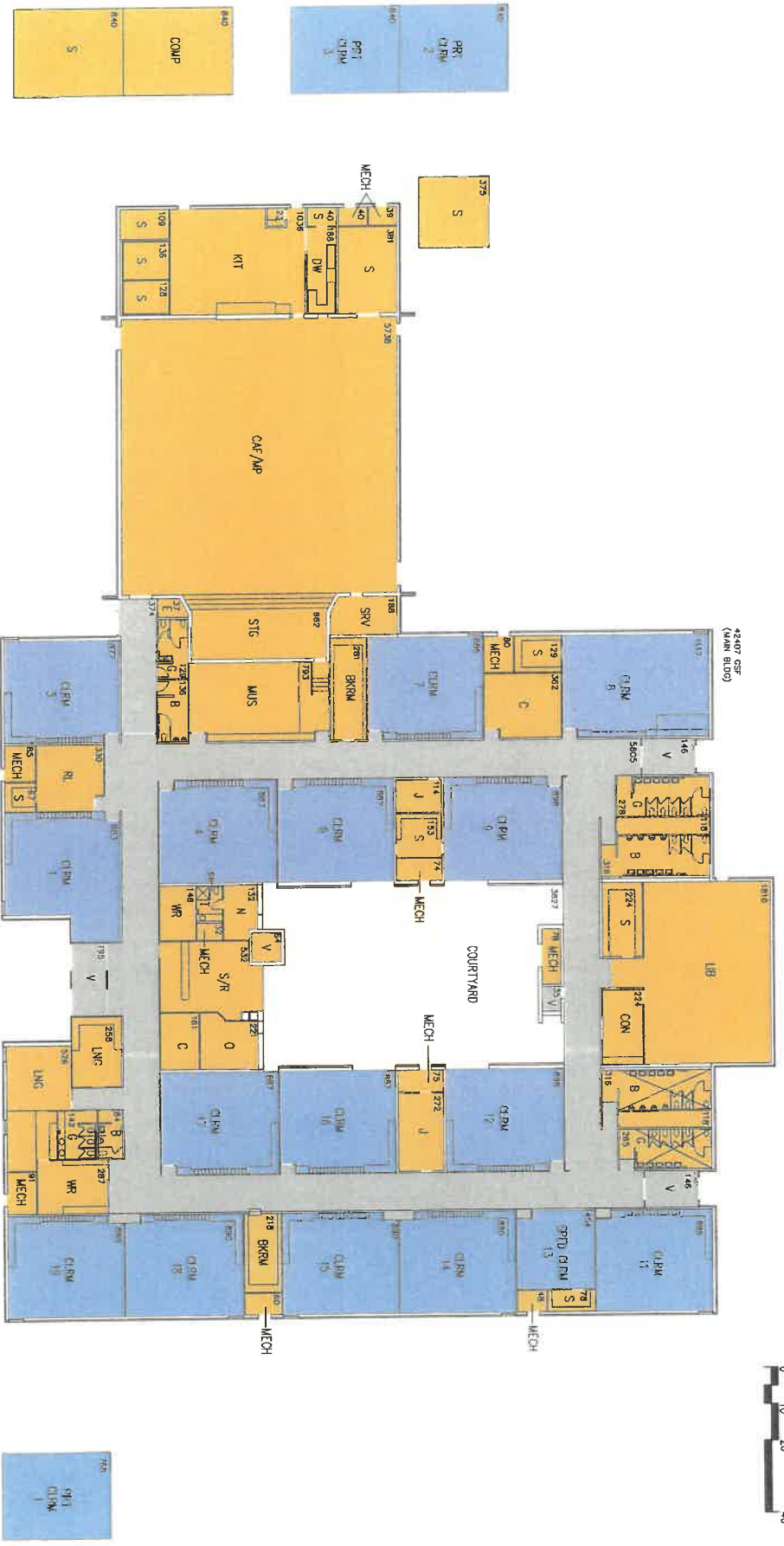
FLOOR PLAN OVERALL



- GENERAL CLASSROOMS
- ADMINISTRATION CLUSTER
- TEACHER SUPPORT
- SPECIAL ED
- KINDERGARTEN
- GYM / CAFETERIA CLUSTER
- SHARED CLUSTER
- CORRIDOR



Deer + Star



LA LUZ ELEMENTARY SCHOOL
 OVERALL S.F. = 42,407

- LEGEND**
- INSTRUCTIONAL
 - SUPPORT
 - HALL

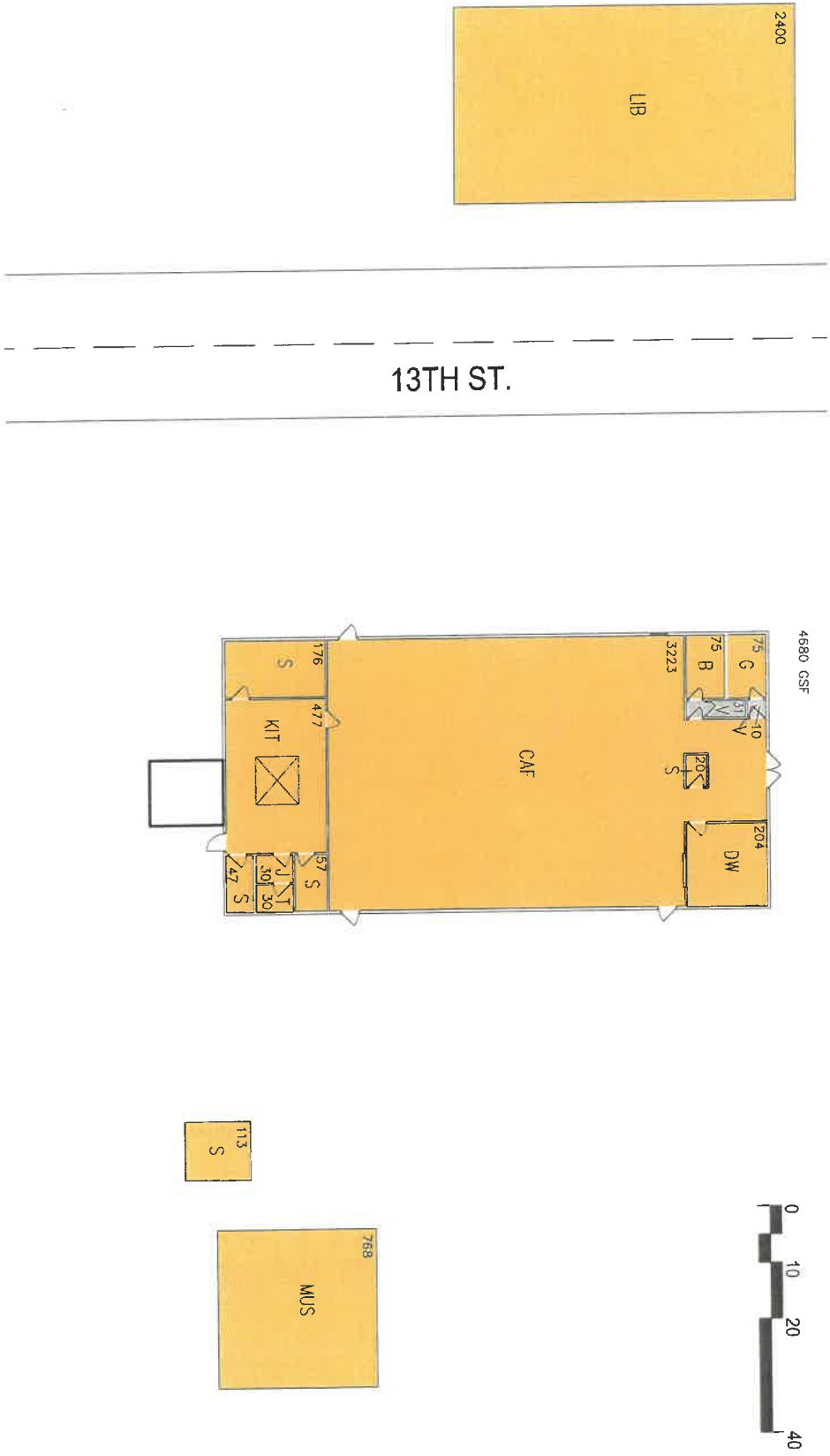
5 YEAR FACILITIES MASTER PLAN
ALAMOGORDO PUBLIC SCHOOL DISTRICT

27855 GSF



NORTH ELEMENTARY SCHOOL
OVERALL S.F. = 32,535

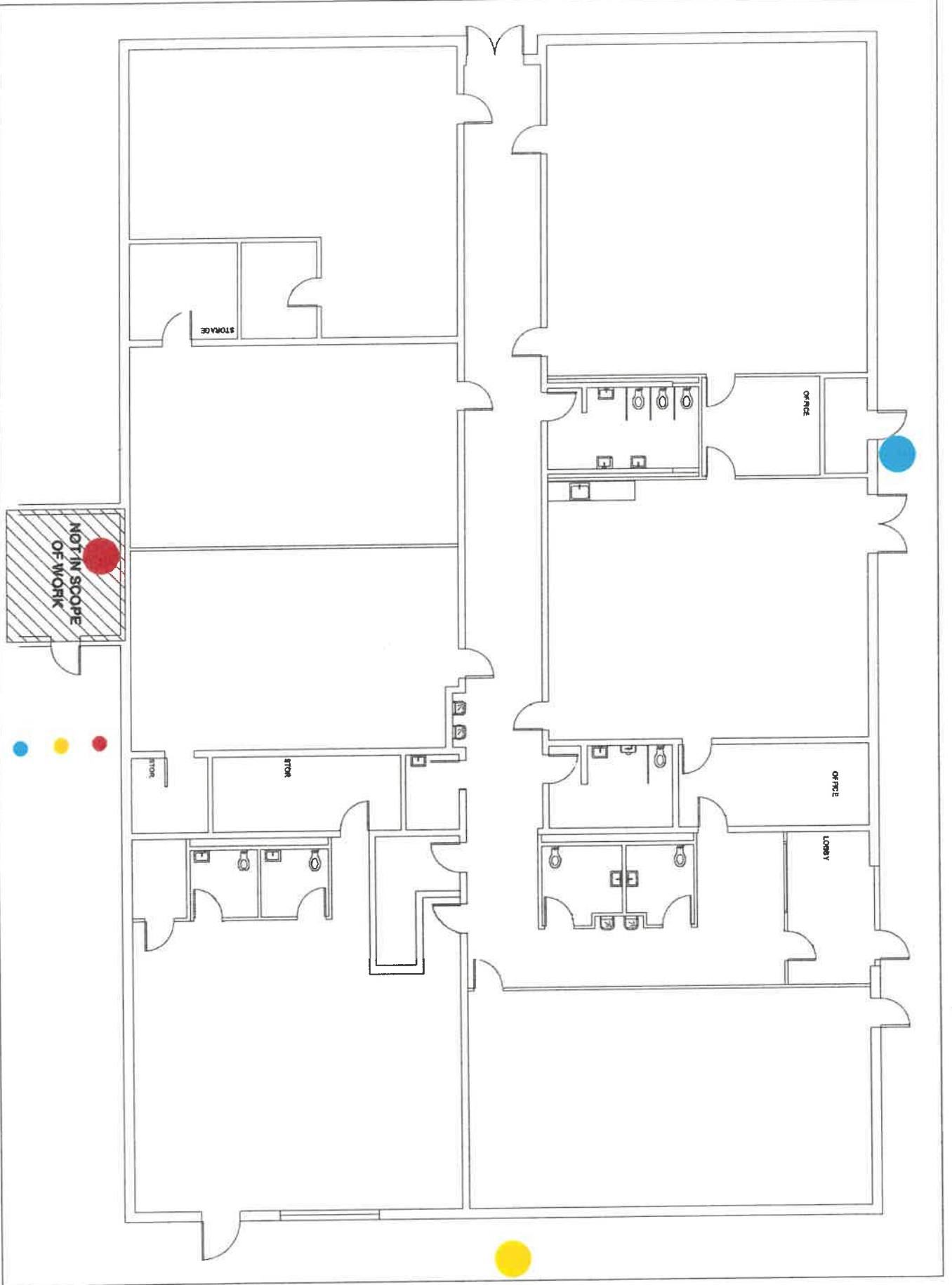
LEGEND
 ■ INSTRUCTIONAL
 ■ SUPPORT
 ■ HALL



NORTH ELEMENTARY SCHOOL
 OVERALL S.F. = 32,535

- LEGEND**
- INSTRUCTIONAL
 - SUPPORT
 - HALL

Bld. F



FIRE ALARM SYSTEM

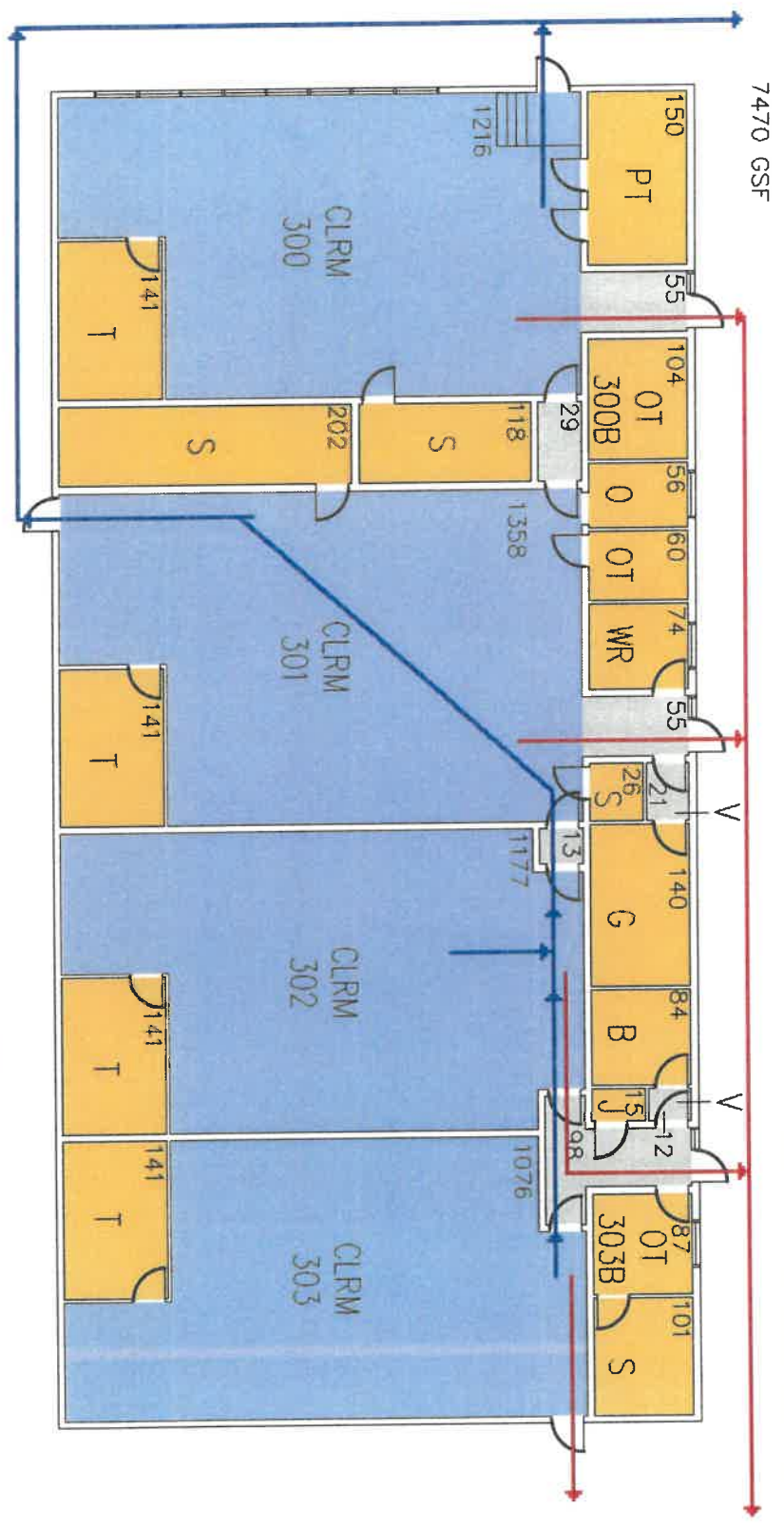
SCALE: 1/8" = 1'-0"



Pre-school

Boldf.

You Are Here---



NORTH ELEMENTARY PRESCHOOL

OVERALL S.F. = 7,470



Primary
Secondary

LEGEND
INSTRUCTIONAL
SUPPORT
HALL



SIERRA ELEMENTARY SCHOOL
 OVERALL S.F. = 41,326

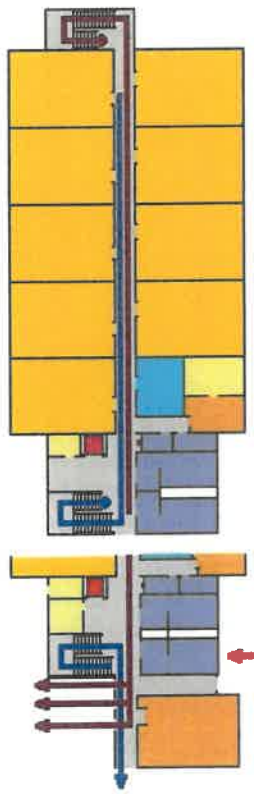
LEGEND
 ■ INSTRUCTIONAL
 ■ SUPPORT
 ■ HALL

PRIMARY - 
SECONDARY - 

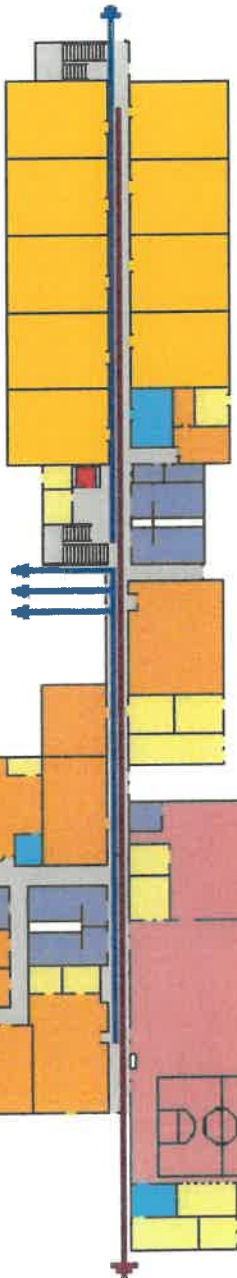
FIRST FLOOR EXIT
STAIRS 

NORTH 

Sunset Hills



SECOND FLOOR



FIRST FLOOR

SCHEMATIC DESIGN
EXITING FLOOR PLAN



FLOOR PLAN



SEE PLAN



YUCCA ELEMENTARY SCHOOL
OVERALL S.F. = 47,894

LEGEND
■ INSTRUCTIONAL
■ SUPPORT
 HALL