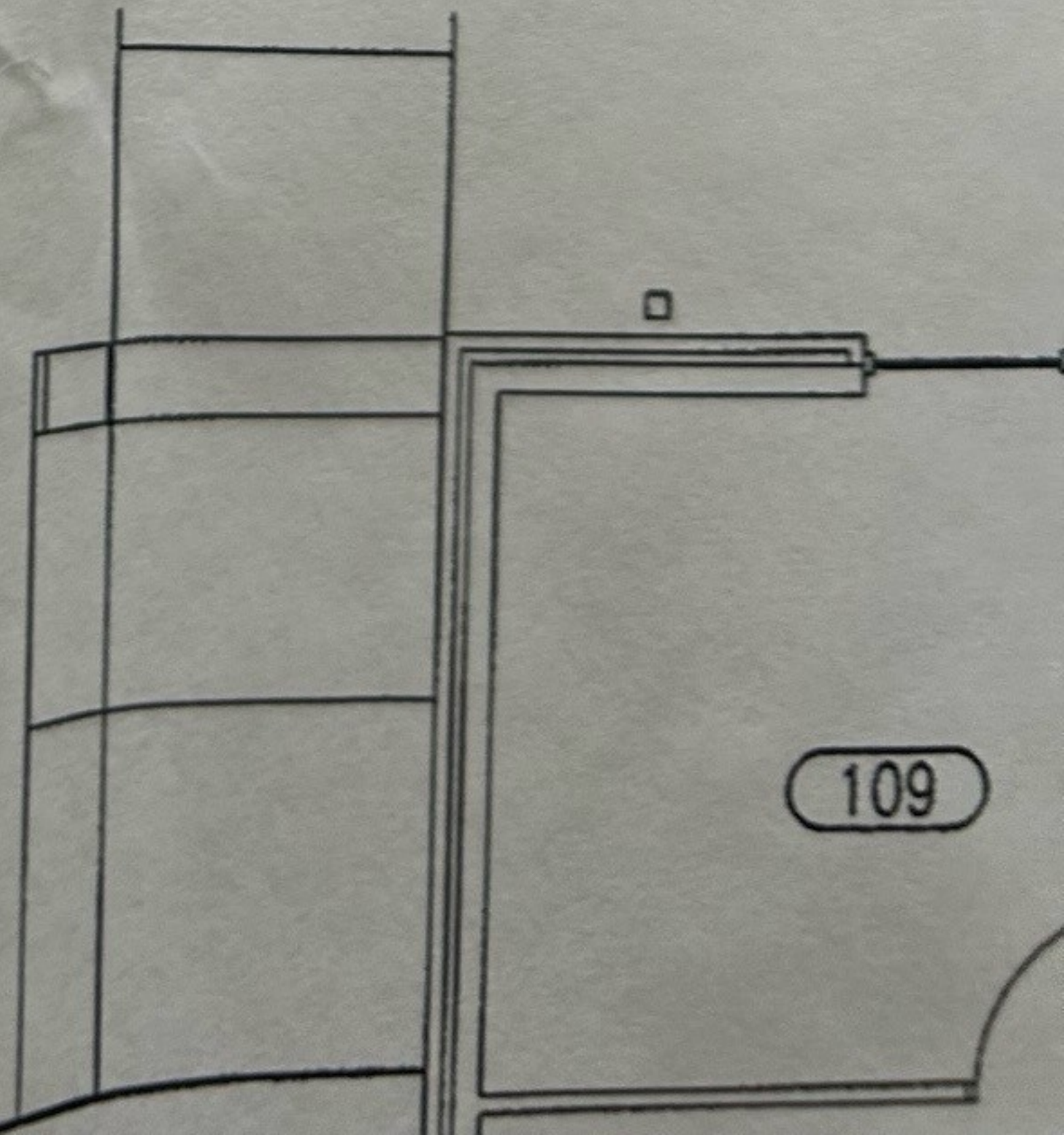
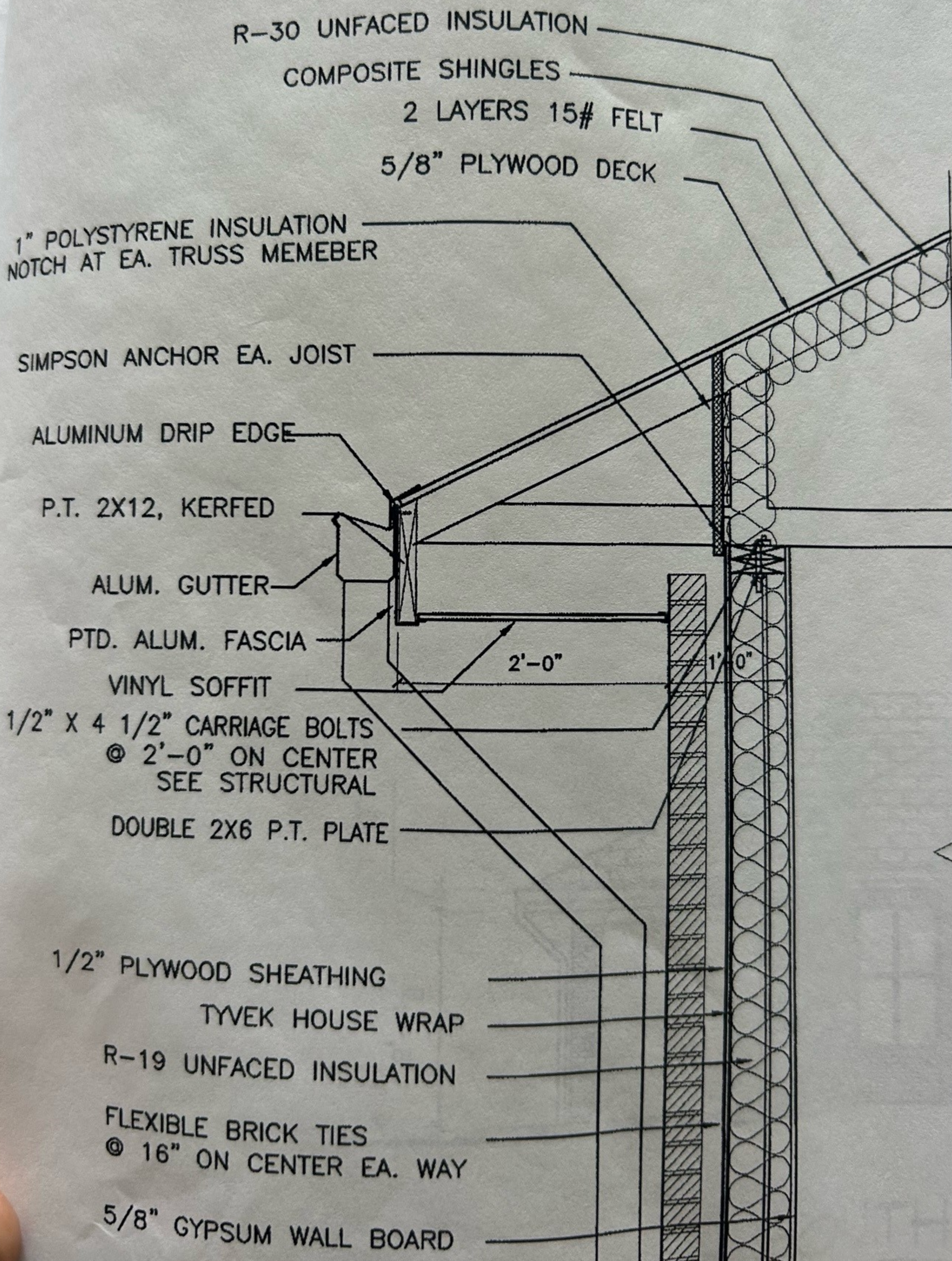


SHEET NOTES

- 1 POTABLE WATER, RISE IN BUILDING TO CEILING SPACE, PROVIDE SHUT-OFF VALVE 36" ABOVE FINISH FLOOR.
- 2 VENT THRU ROOF, OFFSET AND MAINTAIN REQUIRED MINIMUM DISTANCE FROM HVAC OUTSIDE AIR INTAKE IN SURROUNDING VICINITY.
- 3 COORDINATE EXACT FLOOR DRAIN LOCATION WITH HVAC EQUIPMENT, SEE HVAC SHOP DRAWINGS.





R-30 UNFACED INSULATION

COMPOSITE SHINGLES

2 LAYERS 15# FELT

5/8" PLYWOOD DECK

1" POLYSTYRENE INSULATION
NOTCH AT EA. TRUSS MEMEBER

SIMPSON ANCHOR EA. JOIST

ALUMINUM DRIP EDGE

P.T. 2X12, KERFED

ALUM. GUTTER

PTD. ALUM. FASCIA

VINYL SOFFIT

1/2" X 4 1/2" CARRIAGE BOLTS
@ 2'-0" ON CENTER
SEE STRUCTURAL

DOUBLE 2X6 P.T. PLATE

1/2" PLYWOOD SHEATHING

TYVEK HOUSE WRAP

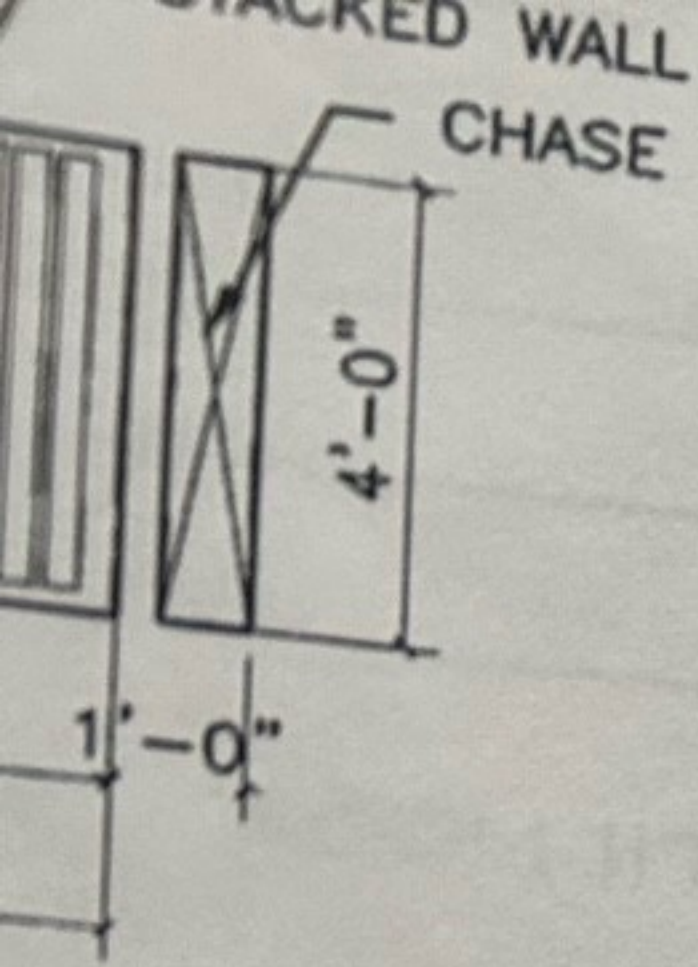
R-19 UNFACED INSULATION

FLEXIBLE BRICK TIES
@ 16" ON CENTER EA. WAY

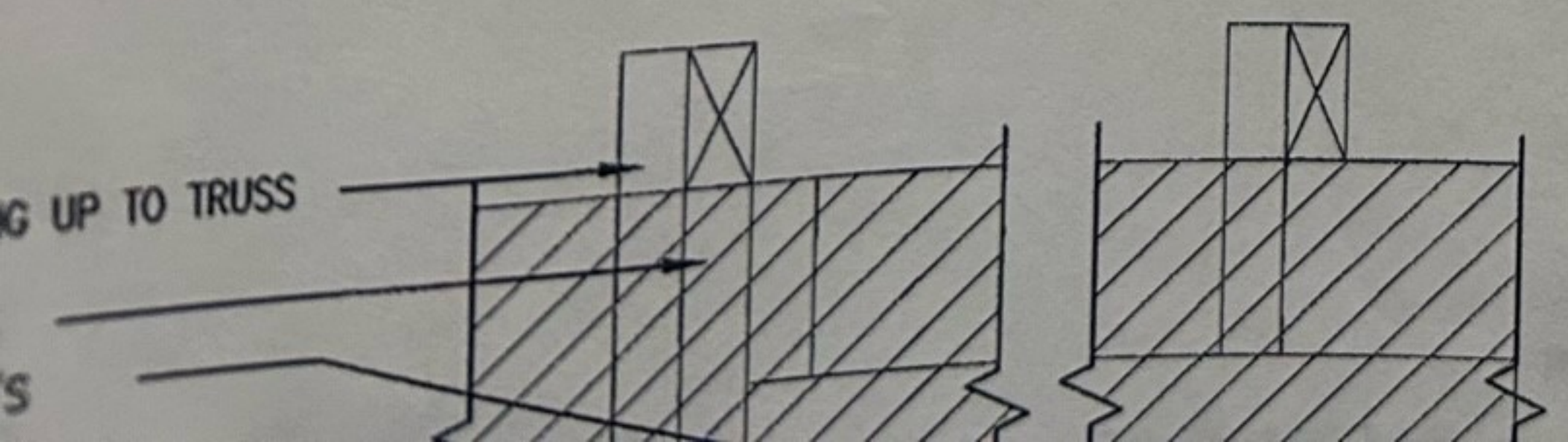
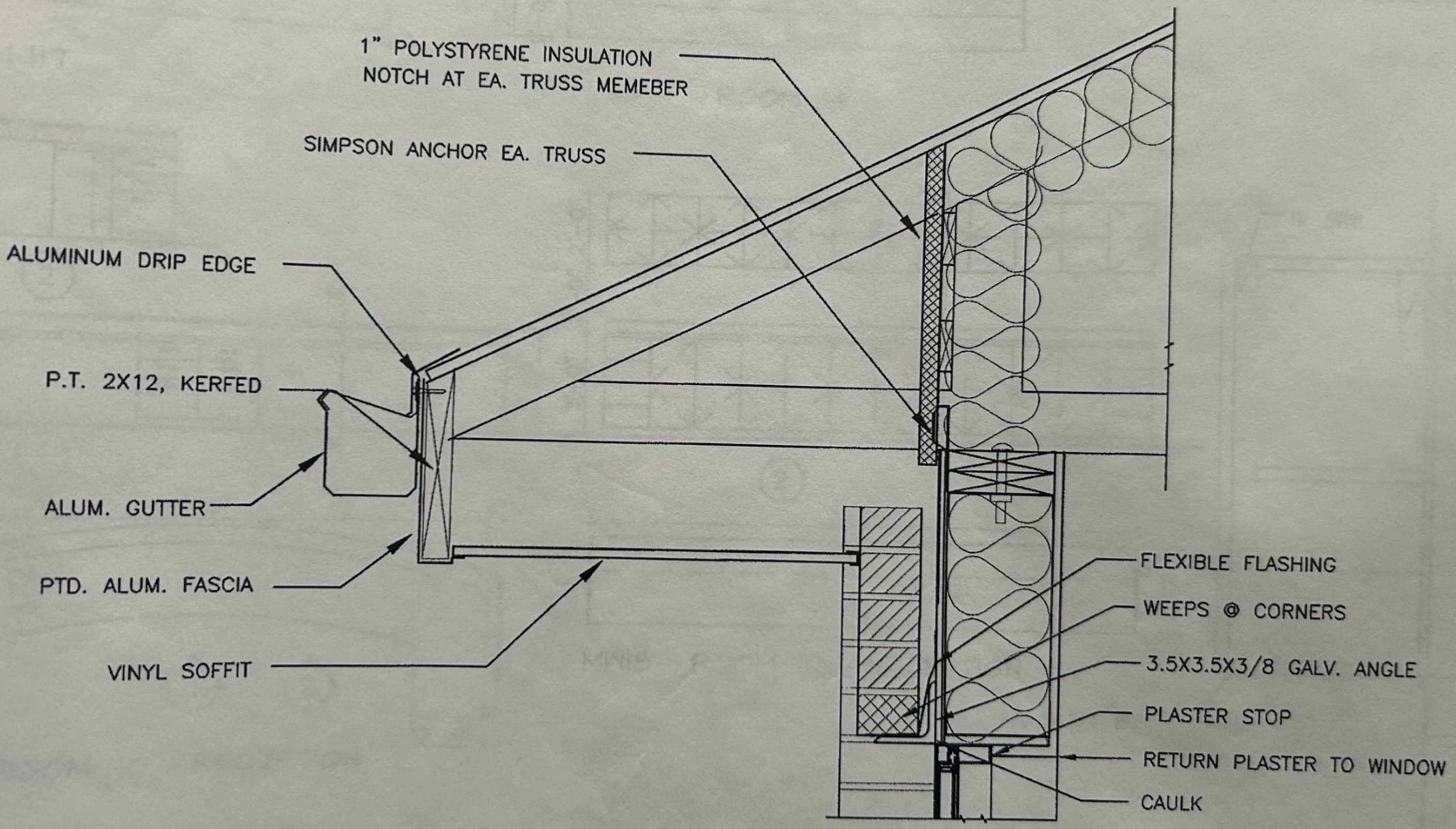
5/8" GYPSUM WALL BOARD

2'-0"

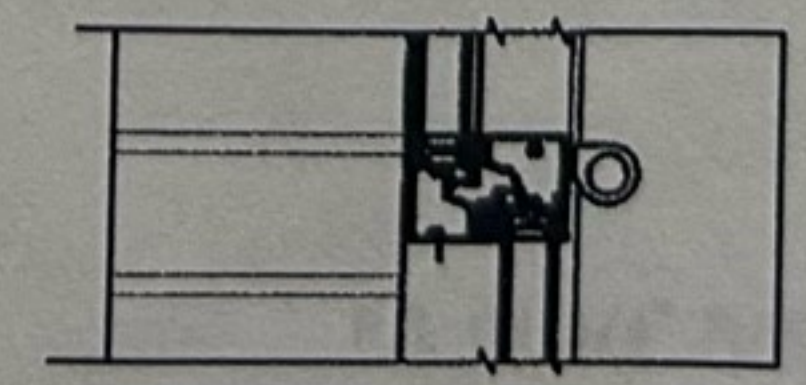
1'-0"



(K)
T&G WOOD SLIDER HEAD TRACK

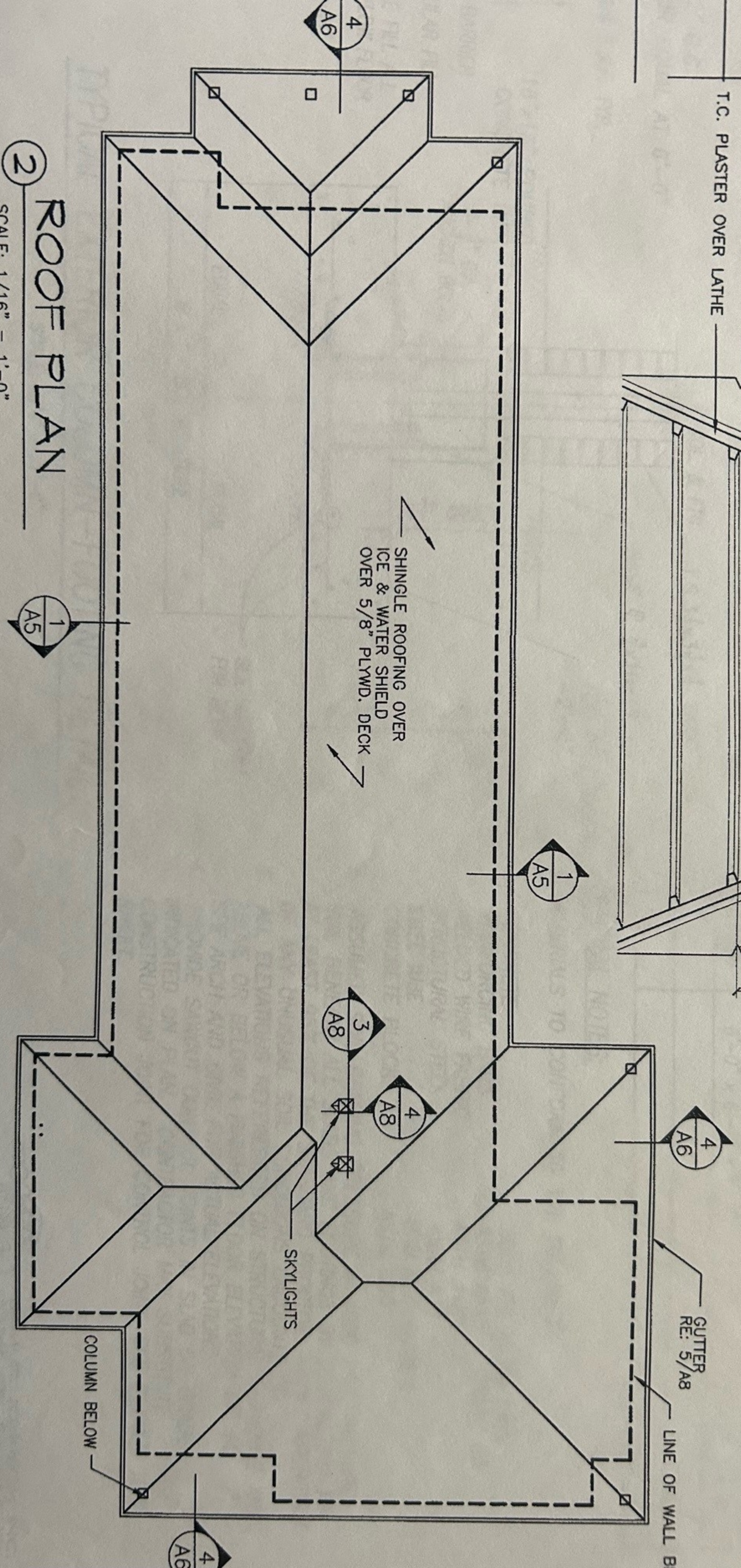
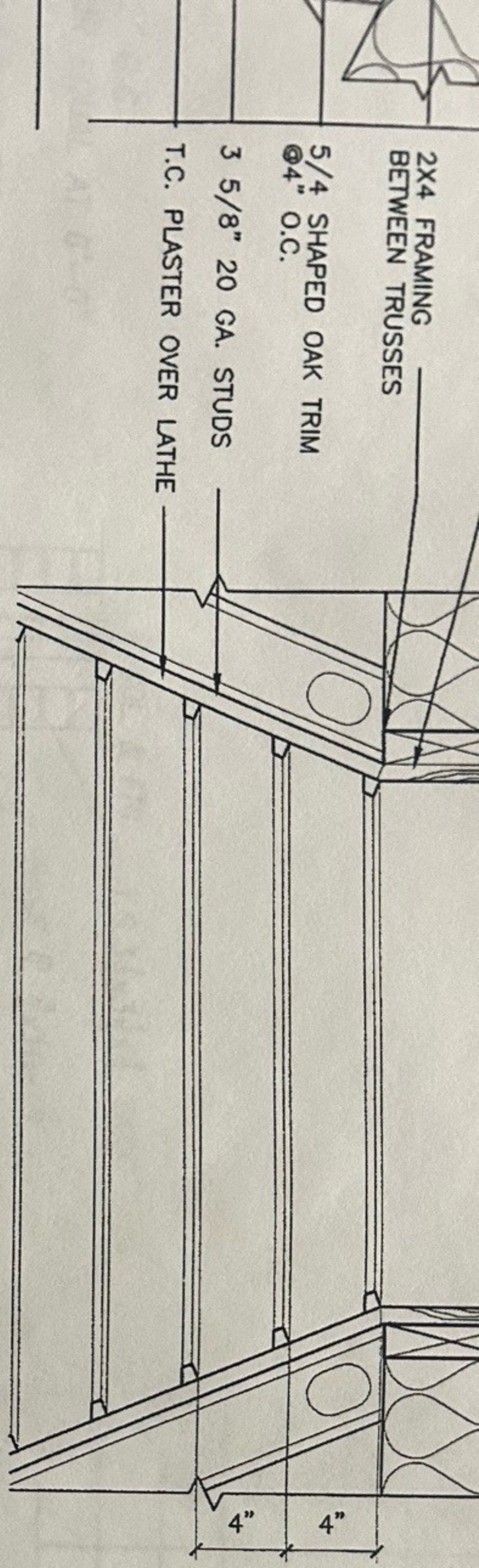


(A) HEAD



(B) INTERMEDIATE SILL

23
24
25
26
27
28
29
30
31
32
33
34
35
36
37
38
39
40
41
42
43
44
45
46
47
48
49
50
51
52
53
54
55
56
57
58
59



2 ROOF PLAN

SCALE: 1/16" = 1'-0"