



DEPARTMENT OF ENVIRONMENTAL SERVICES

Division of Transportation
 Transit Bureau
 2100 Clarendon Boulevard, Suite 900, Arlington, VA 22201
 Phone: 703.228.3681 Fax: 703.228.7548 www.arlingtonva.us

Design Team:

Architectural/Engineering Services

STV Incorporated
 2722 Merrilee Dr. Suite 350, Fairfax, VA 22031
 571.633.2220 www.stvinc.com

Vertical Transportation

Van Deusen & Associates
 1025 Connecticut Ave, NW, Suite 1000, Washington, DC 20036
 202.828.1236 www.vdassoc.com

Cost Estimating & Scheduling

VJ Associates
 1825 K Street NW, Suite 1100, Washington, DC 20006
 202.609.7480 www.vjassociates.com

Survey and Utility Designation

Cervantes & Associates, P.C.
 4229 Lafayette Center Dr, Suite 1125, Chantilly, VA 20151
 703.691.4114 www.cervantes-associates.com

Location Map

SCALE: N.T.S.

Vicinity



100% Design Drawings For: Pentagon City Station Second Elevator Project

South Hayes Street

STV Project Number: 4018669

WMATA Project Number: 251666

Table of Contents:

GENERAL

G-000 Cover Sheet

CIVIL

C-100 Existing Conditions
 C-101 Demolition Plan
 C-200 Site Plan
 C-210 Enlarged Site Plan
 C-310 Enlarged Grading Plan
 C-400 Erosion & Sediment Control Plan
 C-401 Erosion & Sediment Control Notes & Details
 C-500 Site Utility Plan
 C-501 Utility Profiles
 C-MOT-1 Maintenance of Traffic Plan

ARCHITECTURAL

A-001 Architectural Notes and Symbols
 A-002 Codes Summary
 AD-101 Demolition Plan
 A-101 Floor Plan
 A-102 West Elevator Plans
 A-103 East Elevator Plans
 A-201 West Head House Elevations
 A-202 East Head House Elevations
 A-301 West Elevator Building Sections
 A-302 East Elevator Building Sections
 A-303 Elevator Head House Sections
 A-501 Elevator Head House Details
 A-502 Elevator Head House Elevation Details
 A-503 West Elevator Headhouse Details
 A-601 Door and Window Schedules
 A-701 Signage Details Sheet 1 of 2
 A-701A Signage Details Sheet 2 of 2
 A-702 Elevator Cab Plans and Elevations
 A-703 Elevator Details
 AWP-101 Waterproofing Sheet 1 of 4
 AWP-102 Waterproofing Sheet 2 of 4
 AWP-103 Waterproofing Sheet 3 of 4
 AWP-104 Waterproofing Sheet 4 of 4

STRUCTURAL

S-001 General Structural Notes and Legends
 S-101 Foundation Plans
 S-102 Elevator Mezzanine And Plaza Plans
 S-103 Elevator Head House Plans
 S-201 Elevations
 S-301 Concrete Sections
 S-302 Concrete Sections
 S-303 Steel Sections
 S-401 Enlarged Plans And Sections
 S-501 Typical Concrete Details
 S-502 Typical Concrete Details
 S-503 Typical Steel Details

MECHANICAL

M-001 Legend, Schedule and Details
 M-101 Mechanical Floor Plan and Elevations
 M-501 Control Diagrams

ELECTRICAL

E-001 Legend, Schedules and General Notes
 E-101 Partial Mezzanine Level Power Plan
 E-102 Partial Lighting and Power Plans
 E-601 Wiring Diagrams and Panel Schedule

FIRE ALARM

FA-001 Fire Alarm Legend, Abbreviations and Diagrams
 FA-101 Partial Mezzanine Level Fire Alarm Plan
 FA-501 Fire Alarm Details and Elevations

PLUMBING & FIRE PROTECTION

F-101 Partial Floor Plan And Detail
 P-101 Partial Floor Plan

COMMUNICATIONS

T-001 Communications Legend and Abbreviations
 T-101 Mezzanine Plan
 T-201 Street Level Elevations
 T-401 Mezzanine Communications Enlarged Plan
 T-501 CCTV Camera and Door Details
 T-502 Call Station Details
 T-601 Communications Block Diagram
 T-602 Security Block Diagram

EQUIPMENT

VT-101 Proposed Elevator Vertical Transportation
 VT-102 Proposed Elevator Vertical Transportation

I CERTIFY THAT THIS PROJECT WAS BUILT IN SUBSTANTIAL CONFORMANCE WITH THIS PLAN, UNLESS DULY NOTED IN THE ABOVE REVISION BLOCK.

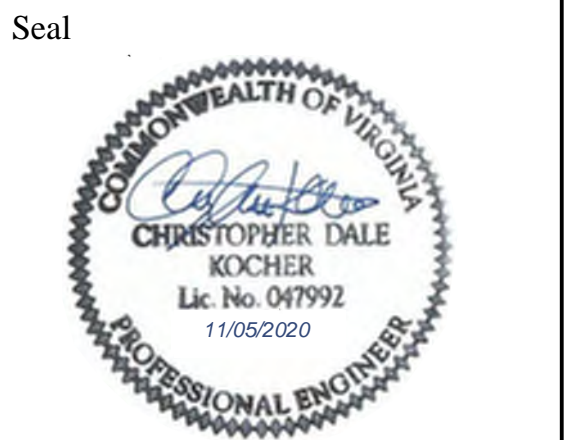
PROJECT MANAGER _____ DATE _____
 CONSTRUCTION MANAGER _____ DATE _____

General Notes:

- ALL ELEVATIONS ARE BASED ON THE NORTH AMERICAN VERTICAL DATUM OF 1988 (N.A.V.D. 88)
- ALL CONSTRUCTION WORK FOR THIS PROJECT SHALL CONFORM TO THE "ARLINGTON COUNTY, DEPARTMENT OF ENVIRONMENTAL SERVICES, CONSTRUCTION STANDARDS AND SPECIFICATIONS" MANUAL OF 2008 AND ANY SPECIAL PROVISIONS AND SPECIAL DESIGN FOR STREETS, STORM SEWER, AND UTILITY CONSTRUCTION AS PROVIDED ON THESE PLANS OR IN THE BID PROPOSAL. COPIES OF THE "CONSTRUCTION STANDARDS AND SPECIFICATIONS" MANUAL MAY BE PURCHASED AT A COST OF \$30.00 PER HARD COPY OR CAN BE DOWNLOADED AT NO COST AT: [HTTP://WWW.ARLINGTONVA.US/DEPARTMENTS/ENVIRONMENTALSERVICES/CPE/ENVIRONMENTALSERVICESPECS.ASPX](http://www.arlingtonva.us/departments/environmentalservices/cpe/environmentalservicespecs.aspx)
- THE CONTRACTOR SHALL CONTACT "MISS UTILITY" AT 811 FOR MARKING THE LOCATIONS OF EXISTING UNDERGROUND UTILITIES (i.e. WATER, SEWER, GAS, TELEPHONE, ELECTRIC, AND CABLE TV) AT LEAST 72 HOURS PRIOR TO ANY EXCAVATION OR CONSTRUCTION. THE CONTRACTOR IS REQUIRED TO IDENTIFY AND PROTECT ALL OTHER UTILITY LINES FOUND IN THE WORK SITE AREA BELONGING TO OTHER OWNERS THAT ARE NOT MEMBERS OF "MISS UTILITY".
- WITH 48 HOURS NOTICE, THE COUNTY WILL PROVIDE CONSTRUCTION STAKES FOR LINE AND GRADE AND THE PREPARATION OF CUT SHEETS RELATED TO THIS PROJECT AT NO CHARGE TO THE CONTRACTOR.
- THE LOCATION OF ALL EXISTING UTILITIES SHOWN ON THESE PLANS ARE FROM BEST AVAILABLE RECORDS AND MUST BE CONSIDERED TO BE APPROXIMATE. WHEN CONSTRUCTION ACTIVITY REACHES IN PROXIMITY TO EXISTING UTILITIES, THE TRENCHES SHALL BE OPENED A SUFFICIENT DISTANCE AHEAD OF THE WORK OR TEST FITS SHALL BE MADE TO VERIFY THE EXACT LOCATION AND INVERTS OF THE UTILITY TO ALLOW FOR POSSIBLE CHANGES IN THE LINE OR GRADE. THE CONTRACTOR SHALL BE RESPONSIBLE FOR ANY DAMAGE TO THE EXISTING UTILITIES AND THE RELATED STRUCTURES. ALL EXISTING UTILITY SYSTEMS SHALL BE PROTECTED TO PREVENT DAMAGE DURING THE CONTRACTOR'S OPERATIONS. ANY SYSTEM DAMAGED SHALL BE PROMPTLY REPAIRED AT NO COST TO THE OWNER.
- FOR CONTROL AND MAINTENANCE OF TRAFFIC REFER TO CONTRACT SPECIAL PROVISION, MAINTENANCE OF TRAFFIC, LOCATED IN THE BID PROPOSAL.
- CONCRETE CRADLES SHALL BE PROVIDED AT ALL SANITARY LATERAL CROSSINGS. IF SO DESIRED BY THE ENGINEER, ADDITIONAL CONCRETE CRADLES SHALL BE PROVIDED TO PROTECT OTHER UTILITIES WITHIN THE CONSTRUCTION LIMITS. THE CONCRETE CRADLES AND ENCASEMENTS SHALL BE PAID FOR AT THE STIPULATED UNIT PRICE.
- ALL UNSUITABLE BACKFILL MATERIAL SHALL BE DISPOSED OF BY THE CONTRACTOR AT HIS OWN EXPENSE. SUITABLE BACKFILL MATERIAL MAY BE REUSED ANYWHERE ON THE JOB AND MAY BE STOCKPILED FOR REUSE. STORING, TRANSPORTATION, LOADING, AND OTHER ASSOCIATED COST ARE TO BE INCLUDED IN THE UNIT BID PRICE FOR PIPE IN PLACE. STORAGE AREAS WILL NOT BE PROVIDED BY ARLINGTON COUNTY.
- ALL CONCRETE ON THIS PROJECT SHALL BE CLASS "A-3", AIR ENTRAINED CONCRETE UNLESS OTHERWISE NOTED. THE CONTRACTOR SHALL USE A CURING COMPOUND TO TREAT ALL EXPOSED CONCRETE.
- THE REMOVAL COST OF ANY EXISTING PAVEMENT, CURB AND GUTTER, SIDEWALKS, APRONS, ETC. IS TO BE INCLUDED IN THE UNIT PRICE BID FOR EXCAVATION. THE CONTRACTORS ARE HEREBY ADVISED THAT THEY MAY DUMP EXCAVATED CONCRETE CURB AND GUTTER AND SIDEWALK (NO REINFORCING STEEL OR WIRE) AT ARLINGTON COUNTY TRADES CENTER LOCATED AT 4300 29TH STREET SOUTH.
- THE CONTRACTOR SHALL PROVIDE ACCESS THROUGH THE SITE AS DIRECTED BY THE ENGINEER AT ALL TIMES DURING CONSTRUCTION AND SHALL ENSURE THE SAFETY OF PEDESTRIANS FROM TRAFFIC AND CONSTRUCTION HAZARDS.
- EXISTING DRAINAGE FACILITIES AFFECTED BY THIS PROPOSED PROJECT SHALL BE CLEANED OUT TO THE SATISFACTION OF THE COUNTY. THE COST IS INCIDENTAL AND SHALL BE INCLUDED IN THE CONTRACT PRICE OF OTHER ITEMS.
- CONTRACTOR SHALL NOT DISTURB OR REMOVE ANY TRAFFIC CONTROL SIGNS, PARKING METERS OR ANY OTHER TRAFFIC CONTROL DEVICE WITHOUT PRIOR PERMISSION FROM THE TRANSPORTATION DIVISION AT (703) 228-3575 OR 228-6512.
- PAVEMENT MARKINGS AND TRAFFIC CONTROL SIGNS THAT PERTAIN TO THIS PROJECT SHALL BE PROVIDED AND INSTALLED BY ARLINGTON COUNTY TRAFFIC ENGINEERING BUREAU. THE CONTRACTOR SHALL COORDINATE WITH ARLINGTON COUNTY, TRAFFIC BUREAU.
- ABANDONING EXISTING STRUCTURES AND PIPELINES, EXCAVATE AND REMOVE EXISTING STRUCTURE AND STORM SEWER LINES OR ABANDON IN PLACE BY FILLING PIPE WITH FLOWABLE FILL AND PLUGGING AT ALL OPEN ENDS. EXCAVATE AND REMOVE STRUCTURE TO A MINIMUM OF 2 FEET BELOW FINISHED GRADE. FILL THE STRUCTURE WITH SAND OR #57 AGGREGATE MATERIAL. THE PRICE FOR ABOVE SHALL BE INCLUDED IN THE UNIT PRICE BID FOR THE PIPE IN PLACE.
- EXISTING UTILITY SYSTEMS SHALL BE PROTECTED TO PREVENT DAMAGE DURING THE CONTRACTOR'S OPERATIONS. ANY SYSTEMS DAMAGED SHALL BE PROMPTLY REPAIRED AT NO COST TO THE OWNER.
- HELICAL PILE FOUNDATIONS AS DEPICTED WITHIN THE CONSTRUCTION DOCUMENTS ARE CONCEPTUAL BASED ON A PROPRIETARY PRODUCT SYSTEM. THE DESIGN THEREOF SHALL BE FINALIZED AS PART OF THE DELEGATED DESIGN UNDER THE GENERAL CONSTRUCTION CONTRACT.
- THE INSTALLATION OF THE ELEVATOR WILL BE COMPLETED BY OTHERS. SUBMIT THE ELEVATOR PERMIT TO STEVE FRANCISCO IN CODE ENFORCEMENT. HIS CONTACT NUMBER IS 703-228-3874



DEPARTMENT OF ENVIRONMENTAL SERVICES
 Division of Transportation
 Transit Bureau
 2100 Clarendon Boulevard, Suite 900
 Arlington, VA 22201
 Phone: 703.228.3681
 Fax: 703.228.7548



Approvals	Date
Tracy D. Twyman, P.C. WMATA PROJECT MANAGER	11/20/2020
[Signature] FD&C BUREAU CHIEF	11/23/20
Azan S. Jaymand FD&C PROJECT MANAGER	11/23/20
Lynn Rivers TRANSIT BUREAU CHIEF	11/23/20
Robin MacChanny TRANSIT PROJECT MANAGER	11/23/20
[Signature] WATER, SEWER STREETS BUREAU CHIEF	11-23-20
Dennis M. Leach TRANSPORTATION DIRECTOR	11/23/20

Revisions	Date
ISSUED FOR CONSTRUCTION	11-20-2020

Project Name and Location
**Pentagon City Station
 Elevator Project**
 Cover Sheet
 South Hayes Street
 G-000

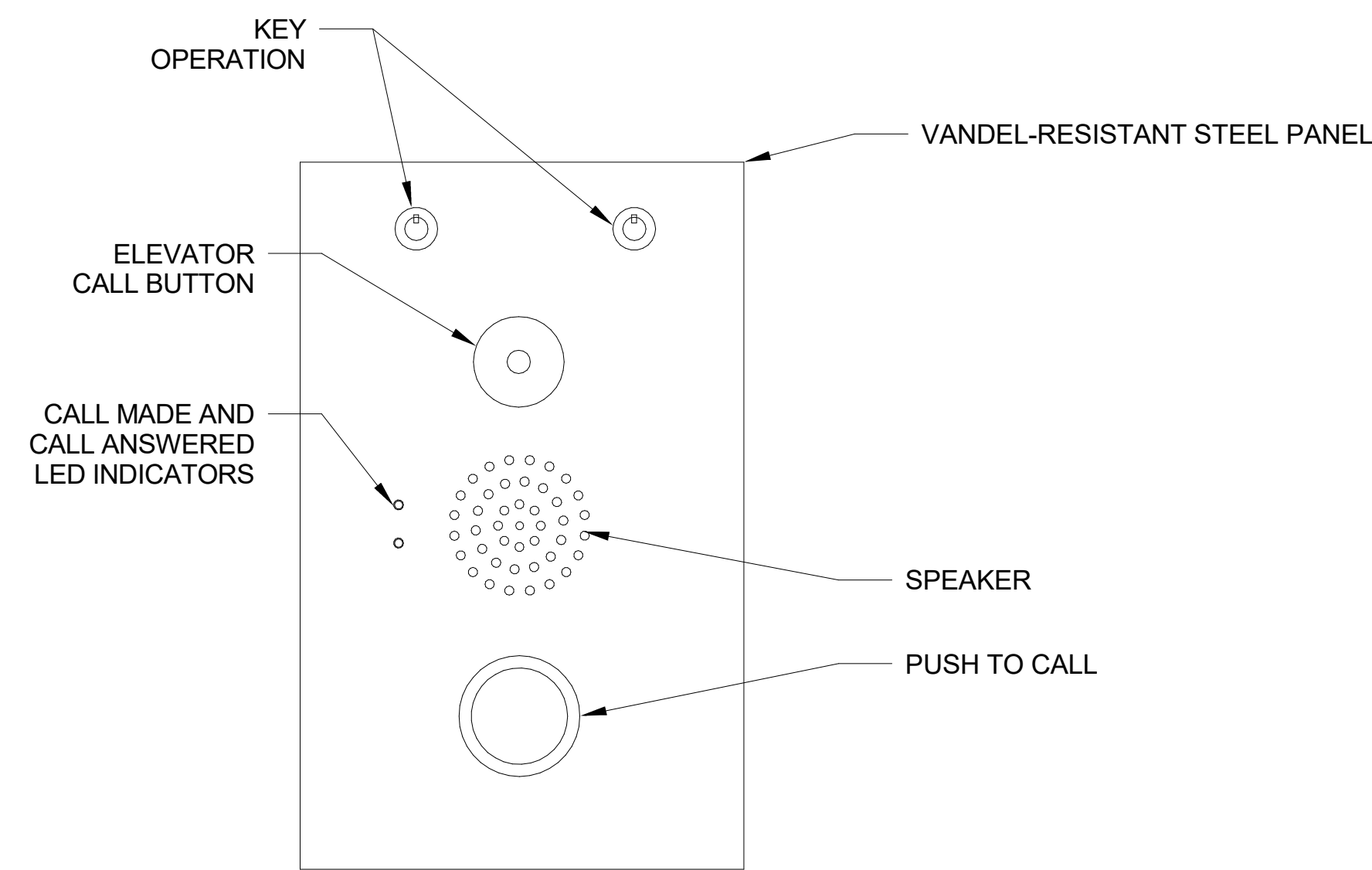
Designed: CK
 Drawn: CK
 Checked: AK
 Miss Utility Transmittal #:

Filename:
 Path:
 Plotted:
 Plotted by:

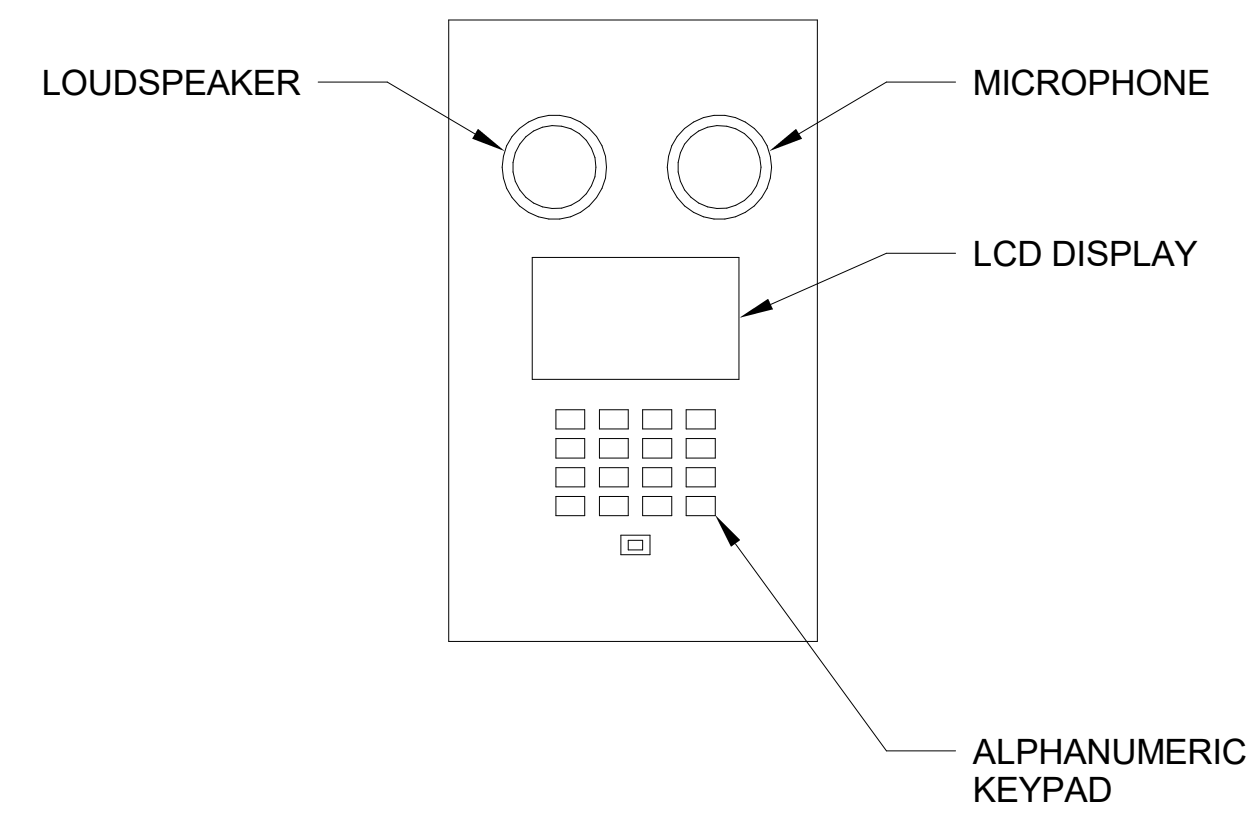
Scale: NONE

100% PLANS - FOR
 CONSTRUCTION

Sheet
 1 OF 68



1 HALL CALL STATION DETAIL
T-502 N.T.S.



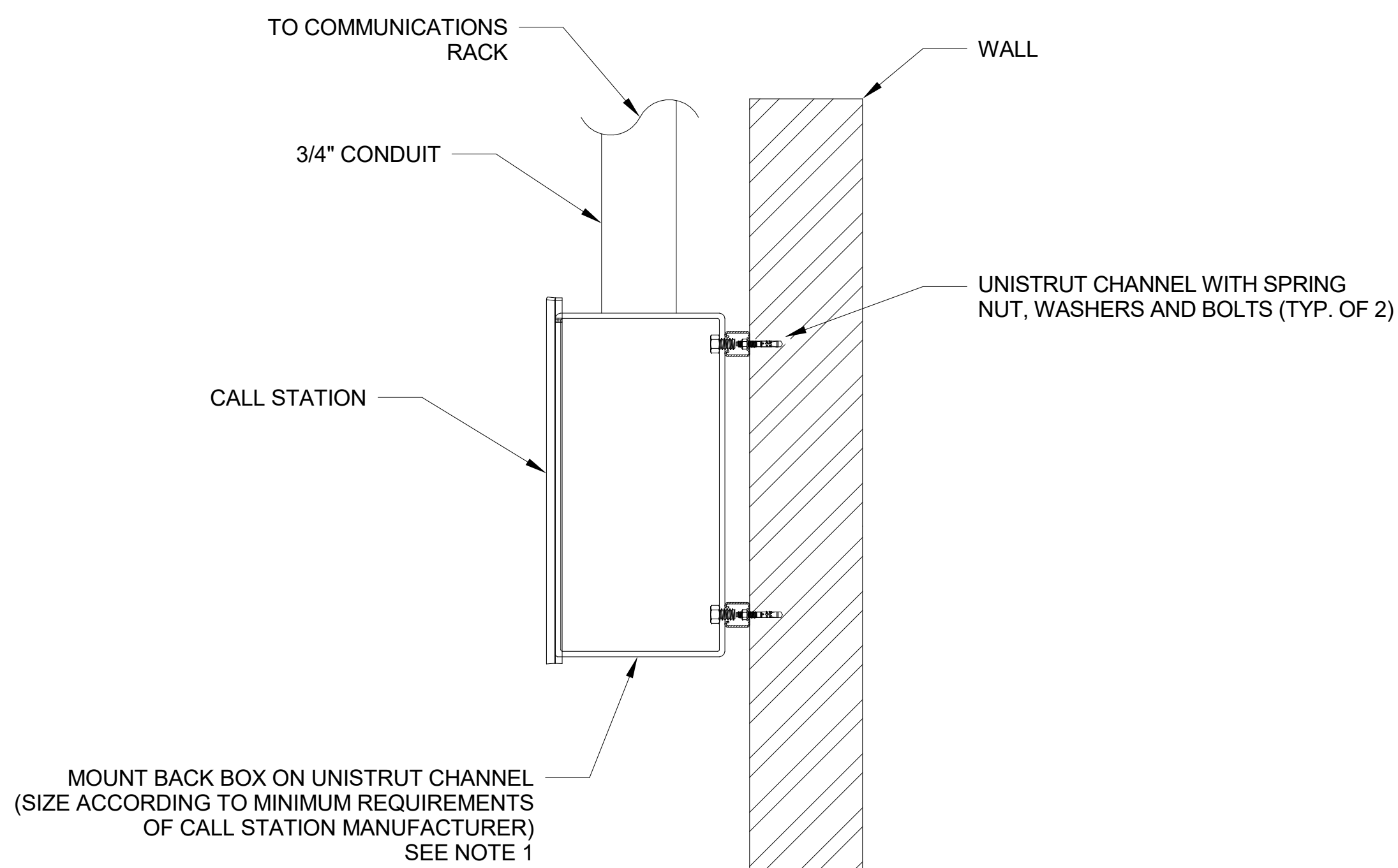
2 ELEVATOR MACHINE ROOM CALL STATION DETAIL
T-502 N.T.S.

- NOTES:**
1. CALL-FOR-AID FOR ELEVATOR LANDINGS AND ELEVATOR CARS SHALL BE INTEGRATED INTO THE ELEVATOR HALL CALL STATIONS. CONTRACTOR SHALL COORDINATE WITH ELEVATOR MANUFACTURER TO INSTALL CALL-FOR-AID IN ELEVATOR LANDINGS AND ELEVATOR CARS. CONTRACTOR SHALL INCLUDE ELEVATOR HALL CALL STATION PANEL CONFIGURATION AS A PART OF SHOP DRAWINGS.
 2. ALL MOUNTING HARDWARE SHALL BE PER MANUFACTURER'S RECOMMENDATION UNLESS OTHERWISE APPROVED BY WMATA.
 3. ELEVATOR HALL CALL STATION AT STREET LEVEL ELEVATOR LANDING SHALL HAVE A COMMUNICATION LINE MONITORING SYSTEM. FOR ELEVATOR HALL CALL STATION DETAILS SEE WMATA COMMUNICATIONS STANDARD DRAWING ST-CM-CFA-005.

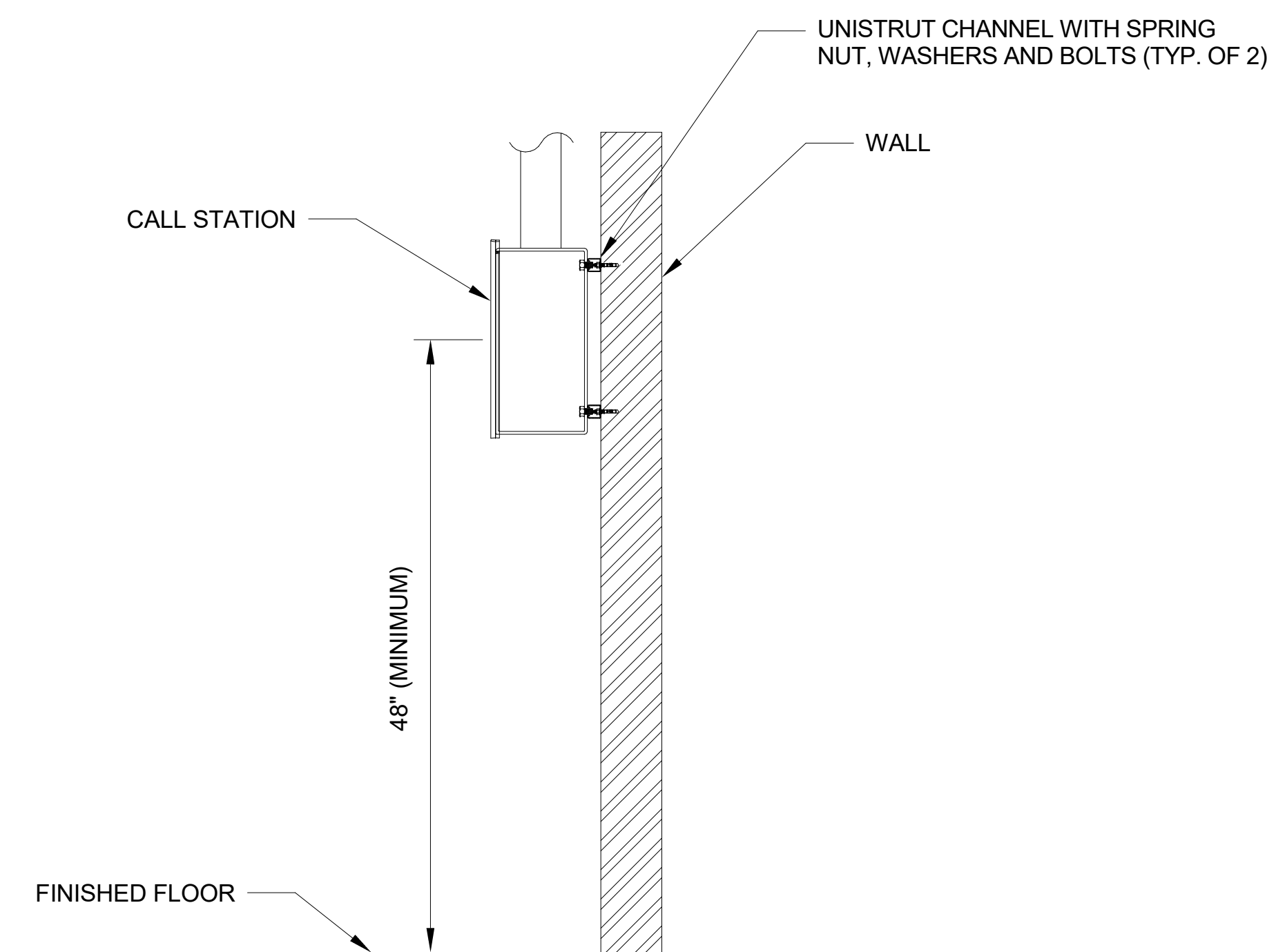


Approvals	Date
WMATA PROJECT MANAGER	
FD&C BUREAU CHIEF	
FD&C PROJECT MANAGER	
TRANSIT BUREAU CHIEF	
TRANSIT PROJECT MANAGER	
WATER, SEWER STREETS BUREAU CHIEF	
TRANSPORTATION DIRECTOR	

Revisions	Date
ISSUED FOR CONSTRUCTION	11-20-2020



3 ELEVATOR MACHINE ROOM CALL STATION WALL MOUNTING DETAIL
T-502 N.T.S.



4 ELEVATOR MACHINE ROOM CALL STATION ELEVATION
T-502 N.T.S.

Project Name and Location
**Pentagon City Station
Elevator Project**
Call Station Details
South Hayes Street
T-502

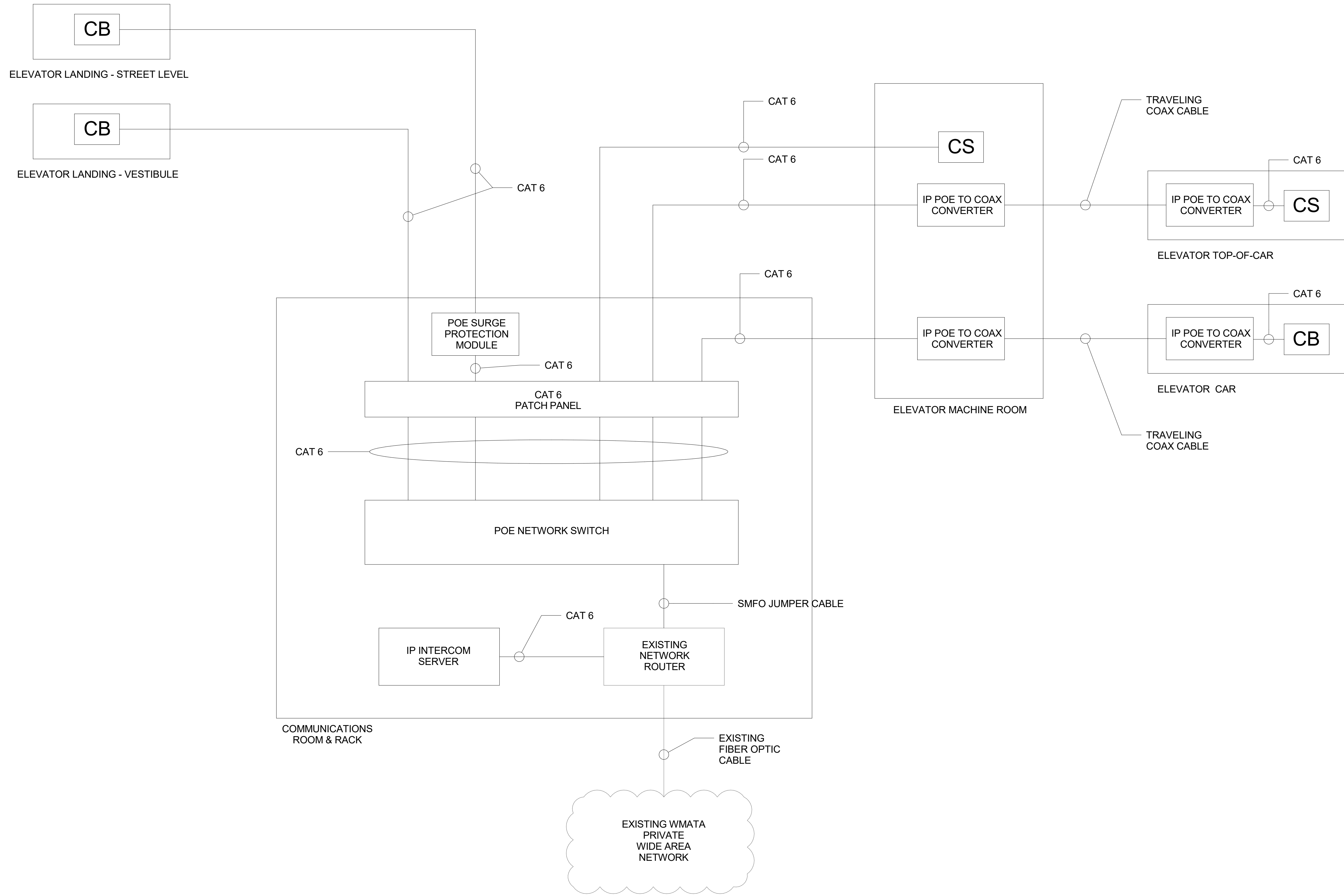
Designed: P. Ebert
Drawn: P. Ebert
Checked: C. Hertz
Miss Utility Transmittal #:

Filename: 4018669_T-3D0000.rvt
Path: I:\Projects\4018669\
Plotted: 5/6/2020 8:33:13 AM
Plotted by:

Scale: None

100% PLANS - FOR CONSTRUCTION

Sheet **64 OF 68**



- NOTES:**
- CONTRACTOR SHALL COORDINATE WITH ELEVATOR MANUFACTURER TO INSTALL ELEVATOR MACHINE ROOM INTERCOM CALL STATION, CALL-FOR-AIDS IN ELEVATOR CAR/LANDINGS, AND ELEVATOR TOP-OF-CAR JACK.
 - ALL CALL STATIONS AND CALL FOR AIDS SHALL BE POE POWERED.



DEPARTMENT OF ENVIRONMENTAL SERVICES

Division of Transportation
Transit Bureau
2100 Clarendon Boulevard, Suite 900
Arlington, VA 22201
Phone: 703.228.3681
Fax: 703.228.7548



Approvals	Date
WMATA PROJECT MANAGER	
FD&C BUREAU CHIEF	
FD&C PROJECT MANAGER	
TRANSIT BUREAU CHIEF	
TRANSIT PROJECT MANAGER	
WATER, SEWER STREETS BUREAU CHIEF	
TRANSPORTATION DIRECTOR	

Revisions	Date
ISSUED FOR CONSTRUCTION	11-20-2020

Project Name and Location
**Pentagon City Station
Elevator Project**
Communications Block Diagram
South Hayes Street
T-601

Designed: P. Ebert
Drawn: P. Ebert
Checked: C. Hertz
Miss Utility Transmittal #:

Filename: 4018669_T-3D0000.rvt
Path: I:\Projects\4018669\
Plotted: 5/6/2020 8:33:14 AM
Plotted by:

Scale: None

100% PLANS - FOR CONSTRUCTION

Sheet 65 OF 68

1 COMMUNICATIONS BLOCK DIAGRAM
T-601 NO SCALE



Approvals _____ Date _____

WMATA PROJECT MANAGER _____

FD&C BUREAU CHIEF _____

FD&C PROJECT MANAGER _____

TRANSIT BUREAU CHIEF _____

TRANSIT PROJECT MANAGER _____

WATER, SEWER STREETS BUREAU CHIEF _____

TRANSPORTATION DIRECTOR _____

Revisions _____ Date _____

ISSUED FOR CONSTRUCTION 11-20-2020

Project Name and Location
**Pentagon City Station
Elevator Project**
Security Block Diagram
South Hayes Street
T-602

Designed: P. Ebert
Drawn: P. Ebert
Checked: C. Hertz
Miss Utility Transmittal #:

Filename: 4018669_T-3D0000.rvt
Path: I:\Projects\4018669\
Plotted: 5/6/2020 8:33:15 AM
Plotted by:

Scale: None

100% PLANS - FOR CONSTRUCTION

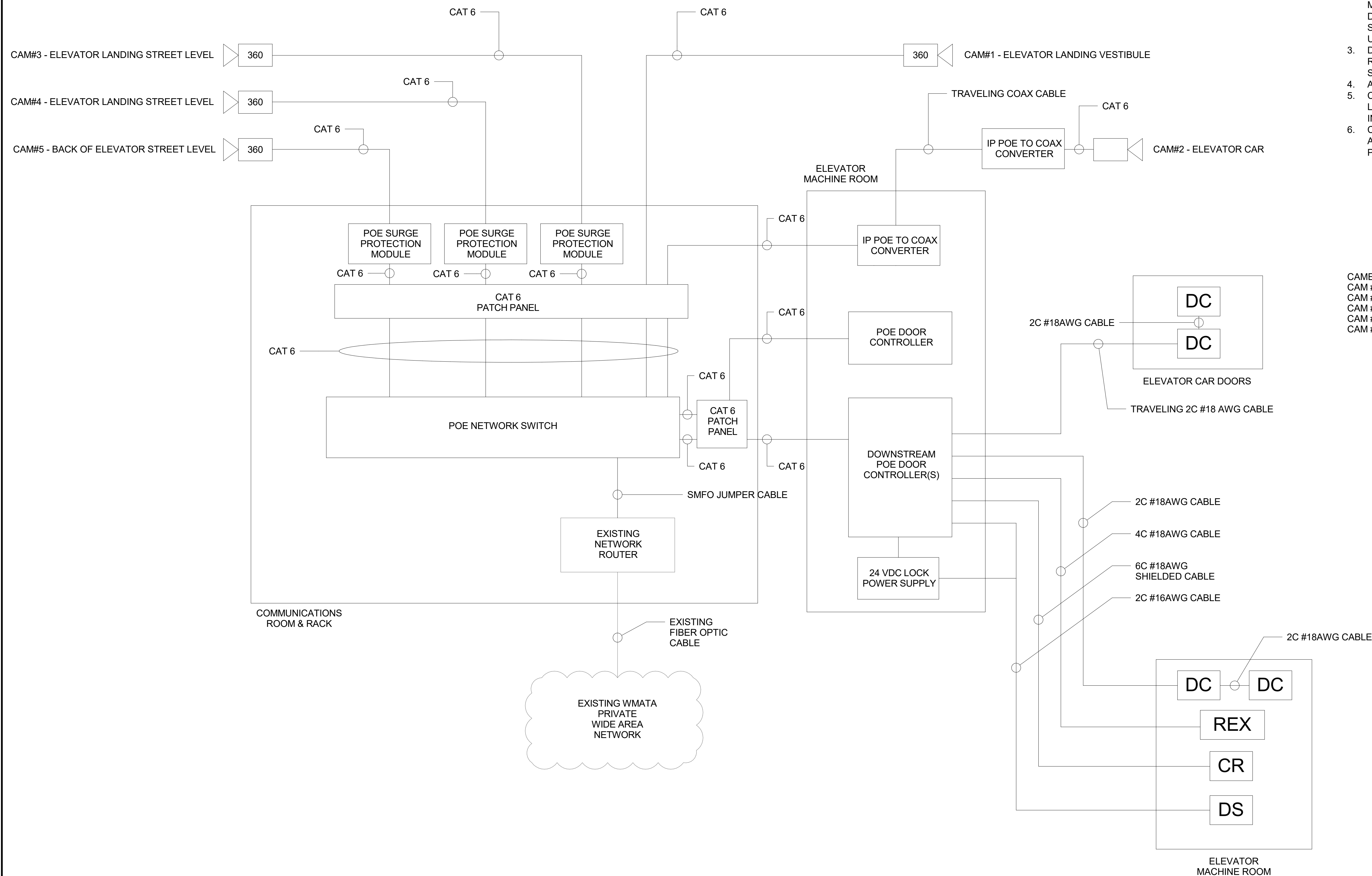
Sheet **66 OF 68**

NOTES:

- CONTRACTOR SHALL FURNISH AND INSTALL LOCKABLE NEMA ENCLOSURE (ACCESS CONTROL ENCLOSURE). THIS ENCLOSURE SHALL HOUSE POE DOOR CONTROLLER AND DOWNSTREAM POE DOOR CONTROLLER(S), AND ANY NECESSARY ANCILLARY EQUIPMENT.
- DOOR CONTACTS ARE TO BE FLUSHED MOUNTED WHERE POSSIBLE. LOCATION OF DOOR CONTACTS AND INFRASTRUCTURE SHALL NOT BE READILY ACCESSIBLE FROM THE UN-SECURE SIDE.
- DOORS CONTACTS FOR ELEVATOR MACHINE ROOM DOUBLE DOOR SHALL BE WIRED IN SERIES.
- ALL CAMERAS SHALL BE POE POWERED.
- CONTRACTOR SHALL PROVIDE NECESSARY LICENSES FOR NEW CAMERAS TO INTEGRATE INTO EXISTING SYSTEM.
- CAM #3 VIEWS PEDESTRIANS APPROACHING AND ENTERING ELEVATOR. CAM #4 VIEWS PEDESTRIANS EXISTING ELEVATOR.

CAMERA LIST:

- CAM #1 - INTERIOR 360 DEGREE CAMERA
- CAM #2 - ELEVATOR CAMERA
- CAM #3 - EXTERIOR 360 DEGREE CAMERA
- CAM #4 - EXTERIOR 360 DEGREE CAMERA
- CAM #5 - EXTERIOR 360 DEGREE CAMERA

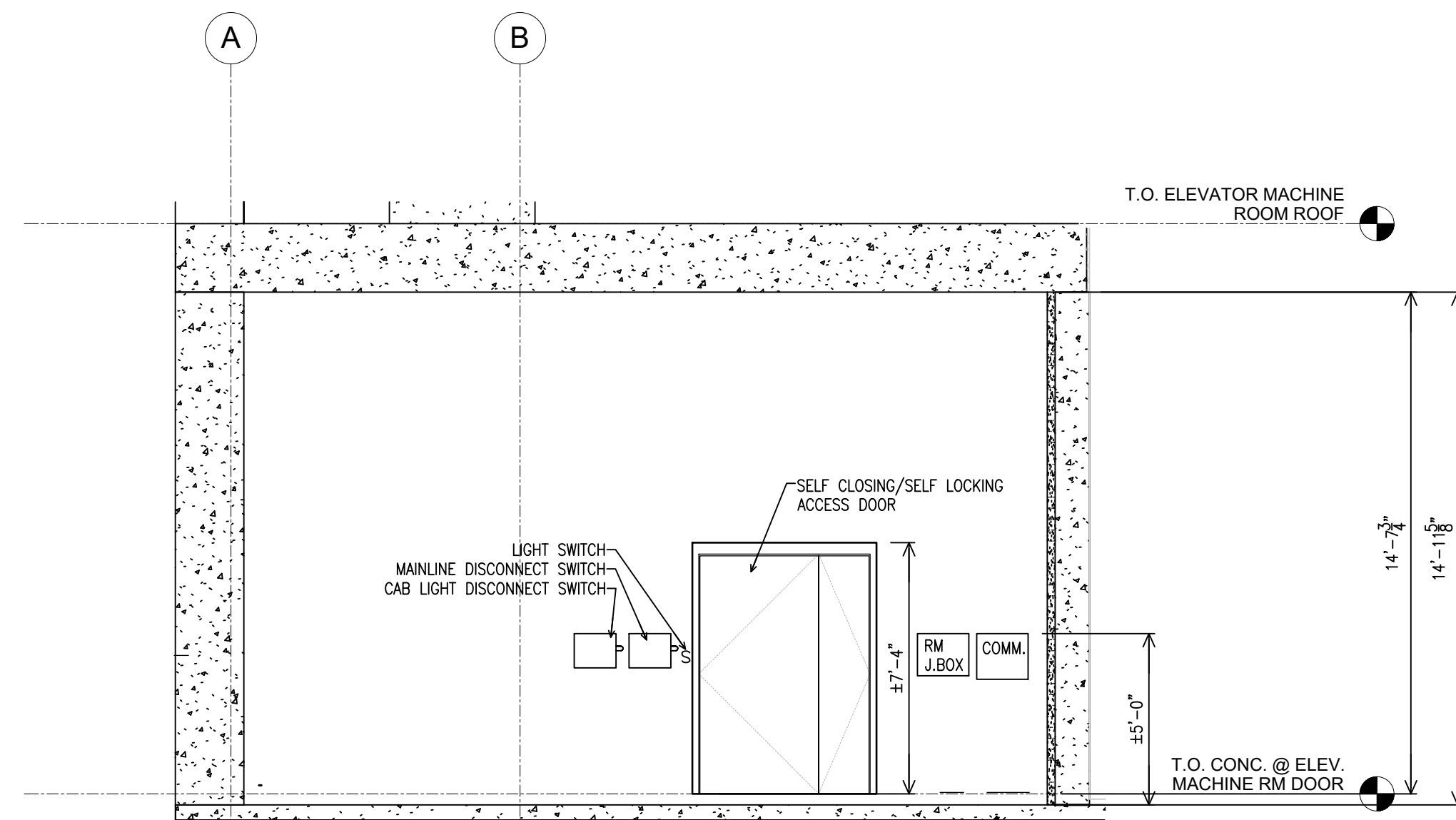


1 SECURITY BLOCK DIAGRAM
T-602 NO SCALE

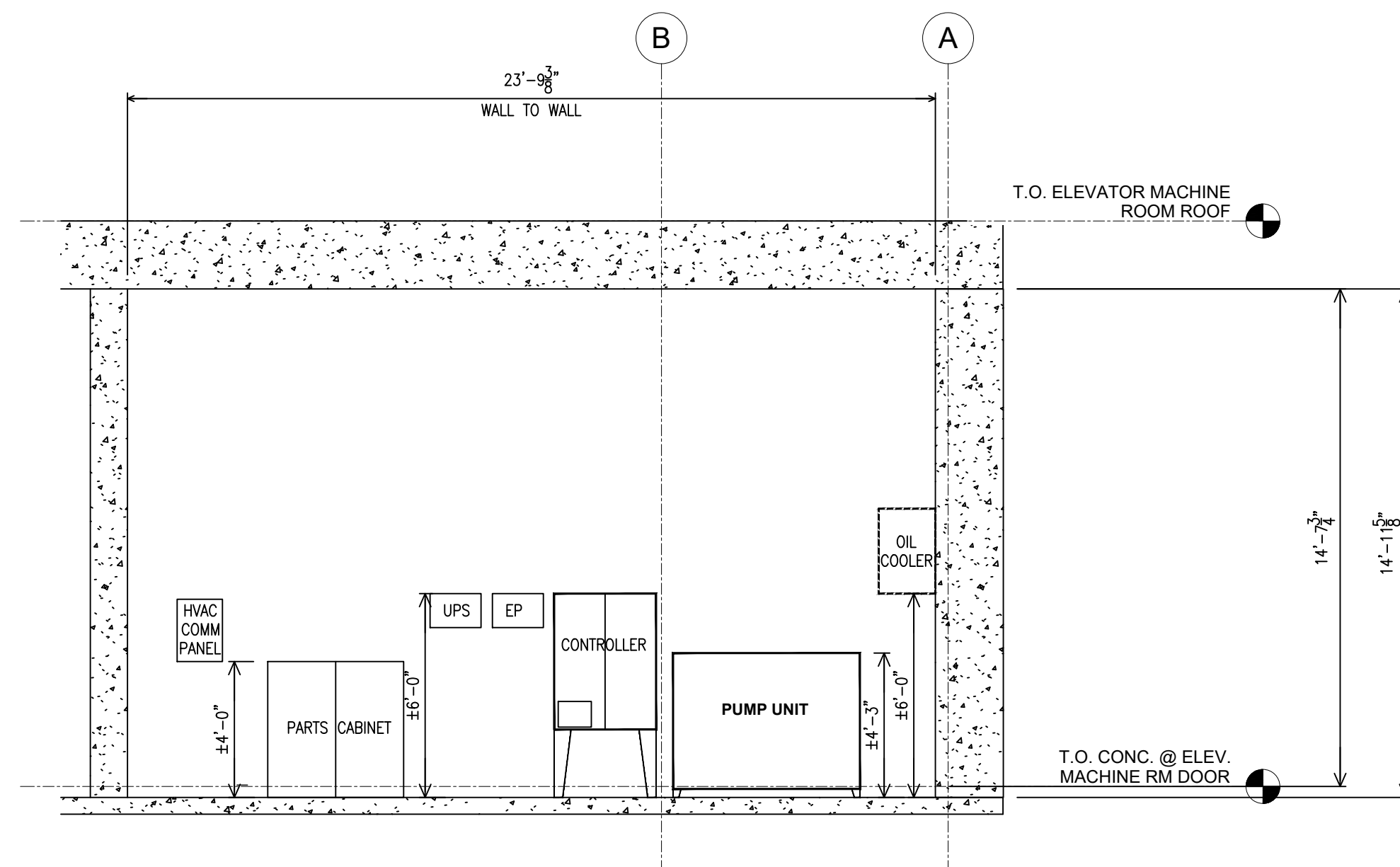


Approvals	Date
WMATA PROJECT MANAGER	
FD&C BUREAU CHIEF	
FD&C PROJECT MANAGER	
TRANSIT BUREAU CHIEF	
TRANSIT PROJECT MANAGER	
WATER, SEWER STREETS BUREAU CHIEF	
TRANSPORTATION DIRECTOR	

Revisions	Date
ISSUED FOR CONSTRUCTION	11-20-2020



3 SECTION EAST VIEW- MACHINE ROOM PLAN
VT-101 SCALE: 1/4"=1'-0"
1/4"=1'
scale feet



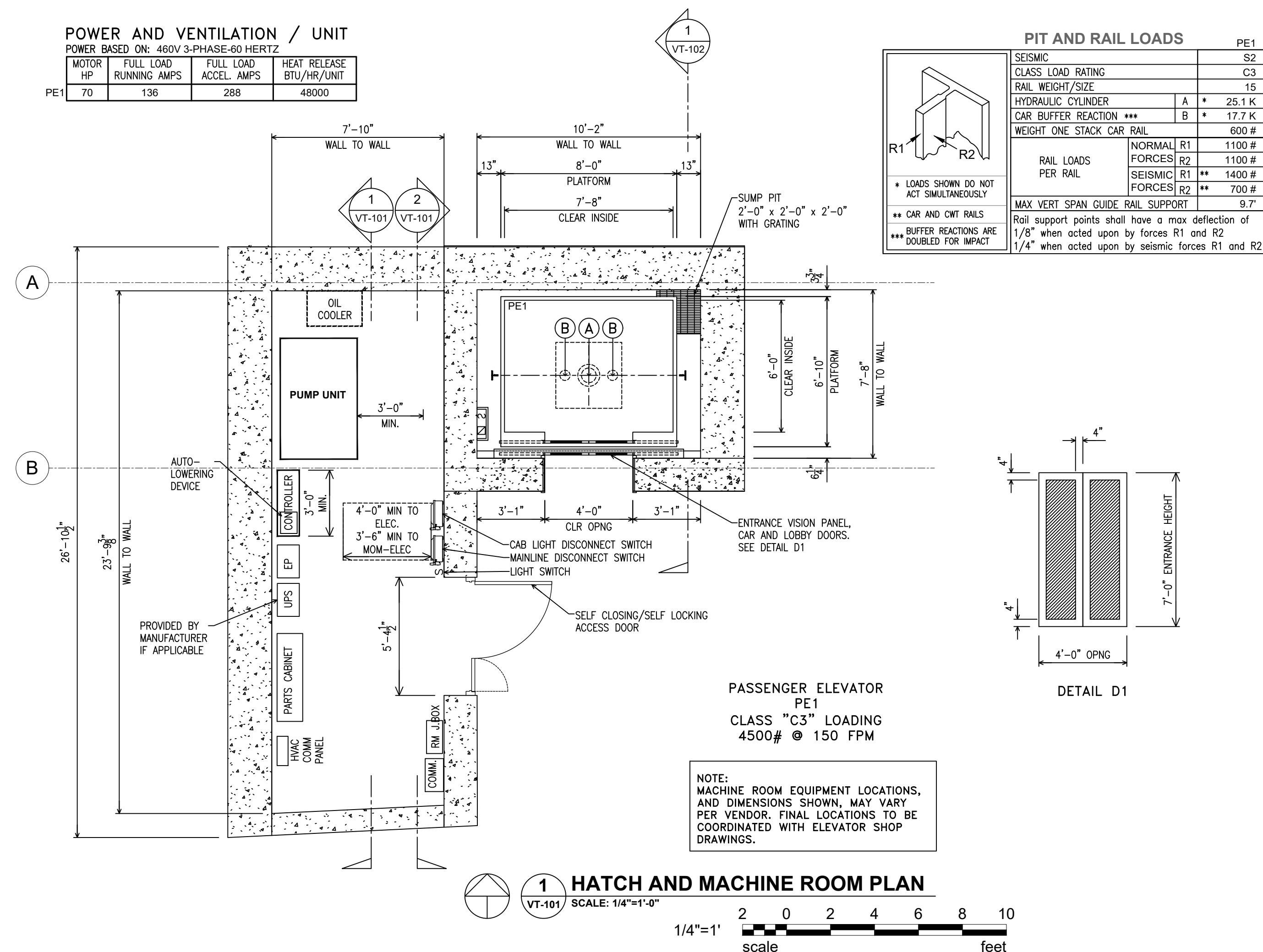
2 SECTION WEST VIEW- MACHINE ROOM PLAN
VT-101 SCALE: 1/4"=1'-0"
1/4"=1'
scale feet

NOTES:

1. INSTALLATION SHALL COMPLY WITH ALL APPLICABLE REQUIREMENTS OF THE VUSBC 2012, IBC 2012, NEC 2011, ICG A117.1-2009 AND ASME A17.1.2010
2. MEANS TO CONTROL FLUIDS IN ELEVATOR PITS SHALL COMPLY WITH REQUIREMENTS ADOPTED BY THE AUTHORITY HAVING JURISDICTION
3. A COPY OF THE APPROVED DRAWINGS AND THE PERMIT SHALL BE ON THE JOB SITE
4. COMPLY WITH ALL REQUIREMENTS OF THE APPROVED DRAWINGS
5. FINAL ACCEPTANCE APPROVAL CONTINGENT ON FIELD INSPECTION FROM ARLINGTON COUNTY AUTHORIZED ELEVATOR INSPECTOR

POWER AND VENTILATION / UNIT
POWER BASED ON: 480V 3-PHASE-60 HERTZ

MOTOR HP	FULL LOAD RUNNING AMPS	FULL LOAD ACCEL. AMPS	HEAT RELEASE BTU/HR/UNIT
70	136	288	48000



PIT AND RAIL LOADS

		PE1	
SEISMIC CLASS LOAD RATING		S2	
RAIL WEIGHT/SIZE		C3	
HYDRAULIC CYLINDER		A	* 25.1 K
CAR BUFFER REACTION ***		B	* 17.7 K
WEIGHT ONE STACK CAR RAIL			600 #
RAIL LOADS PER RAIL	NORMAL R1		1100 #
	SEISMIC R1	**	1400 #
FORCES PER RAIL	NORMAL R2		1100 #
	SEISMIC R2	**	700 #
MAX VERT SPAN GUIDE RAIL SUPPORT			9.7'

* LOADS SHOWN DO NOT ACT SIMULTANEOUSLY
** CAR AND CWT RAILS
*** BUFFER REACTIONS ARE DOUBLED FOR IMPACT

Rail support points shall have a max deflection of 1/8" when acted upon by forces R1 and R2
1/4" when acted upon by seismic forces R1 and R2

NOTE: MACHINE ROOM EQUIPMENT LOCATIONS, AND DIMENSIONS SHOWN, MAY VARY PER VENDOR. FINAL LOCATIONS TO BE COORDINATED WITH ELEVATOR SHOP DRAWINGS.

1 HATCH AND MACHINE ROOM PLAN
VT-101 SCALE: 1/4"=1'-0"
1/4"=1'
scale feet

Project Name and Location
**Pentagon City Station
Elevator Project**
Proposed Elevator Vertical Transportation
South Hayes Street
VT-101

Designed: VDA
Drawn: VDA
Checked: VDA
Miss Utility Transmittal #:

Filename: 2515872_X-3D0000.rvt
Path: I:\Projects\2515872\
Plotted:
Plotted by:

Scale: 1/4" = 1'-0"

100% PLANS - FOR CONSTRUCTION



November 20, 2020

Approvals _____ Date _____

WMATA PROJECT MANAGER _____

FD&C BUREAU CHIEF _____

FD&C PROJECT MANAGER _____

TRANSIT BUREAU CHIEF _____

TRANSIT PROJECT MANAGER _____

WATER, SEWER STREETS BUREAU CHIEF _____

TRANSPORTATION DIRECTOR _____

Revisions _____ Date _____

ISSUED FOR CONSTRUCTION 11-20-2020

Project Name and Location
**Pentagon City Station
Elevator Project**
Proposed Elevator Vertical Transportation
South Hayes Street
VT-102

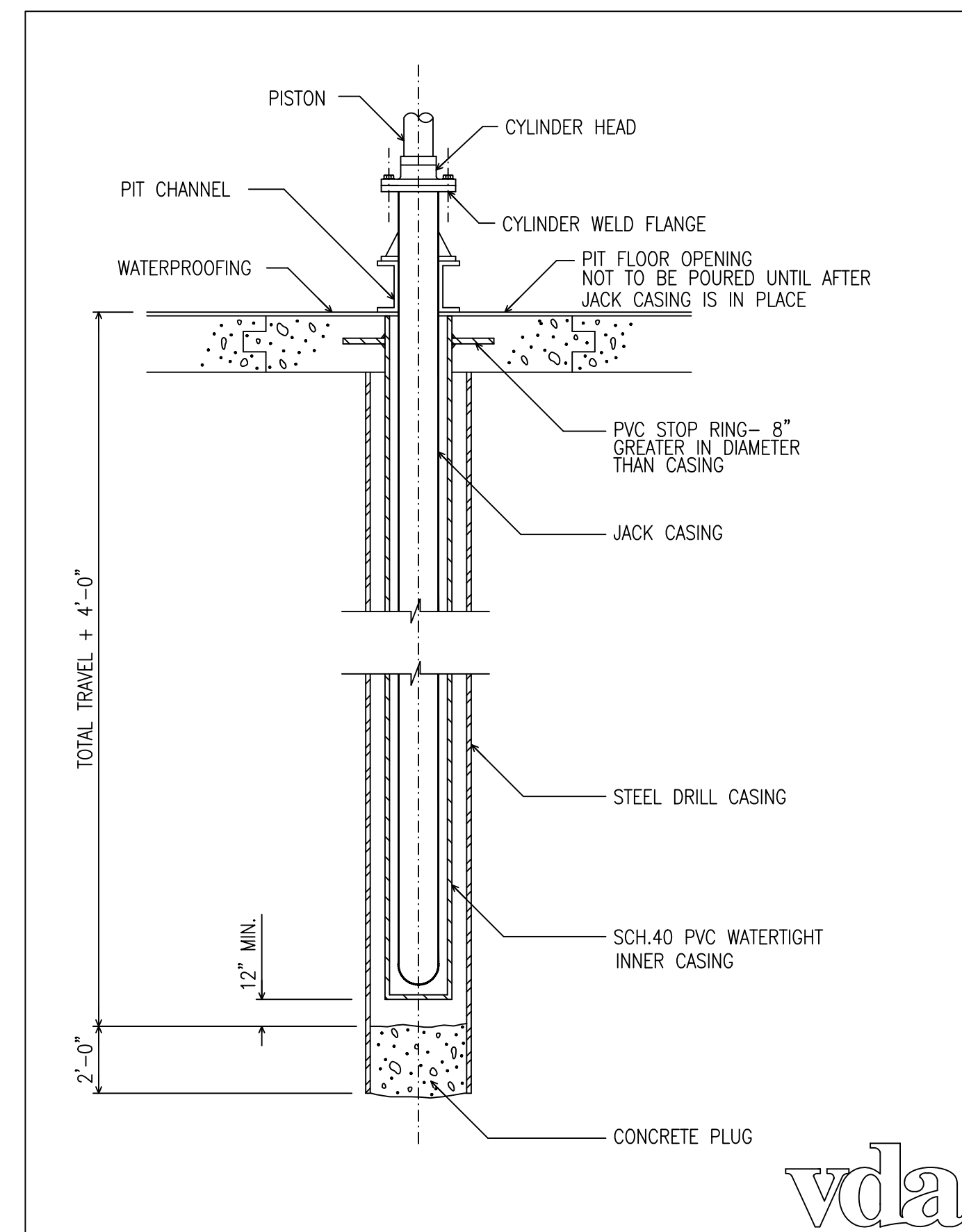
Designed: VDA
Drawn: VDA
Checked: VDA
Miss Utility Transmittal #:

Filename: 2515872_X-3D0000.rvt
Path: I:\Projects\2515872\
Plotted by:

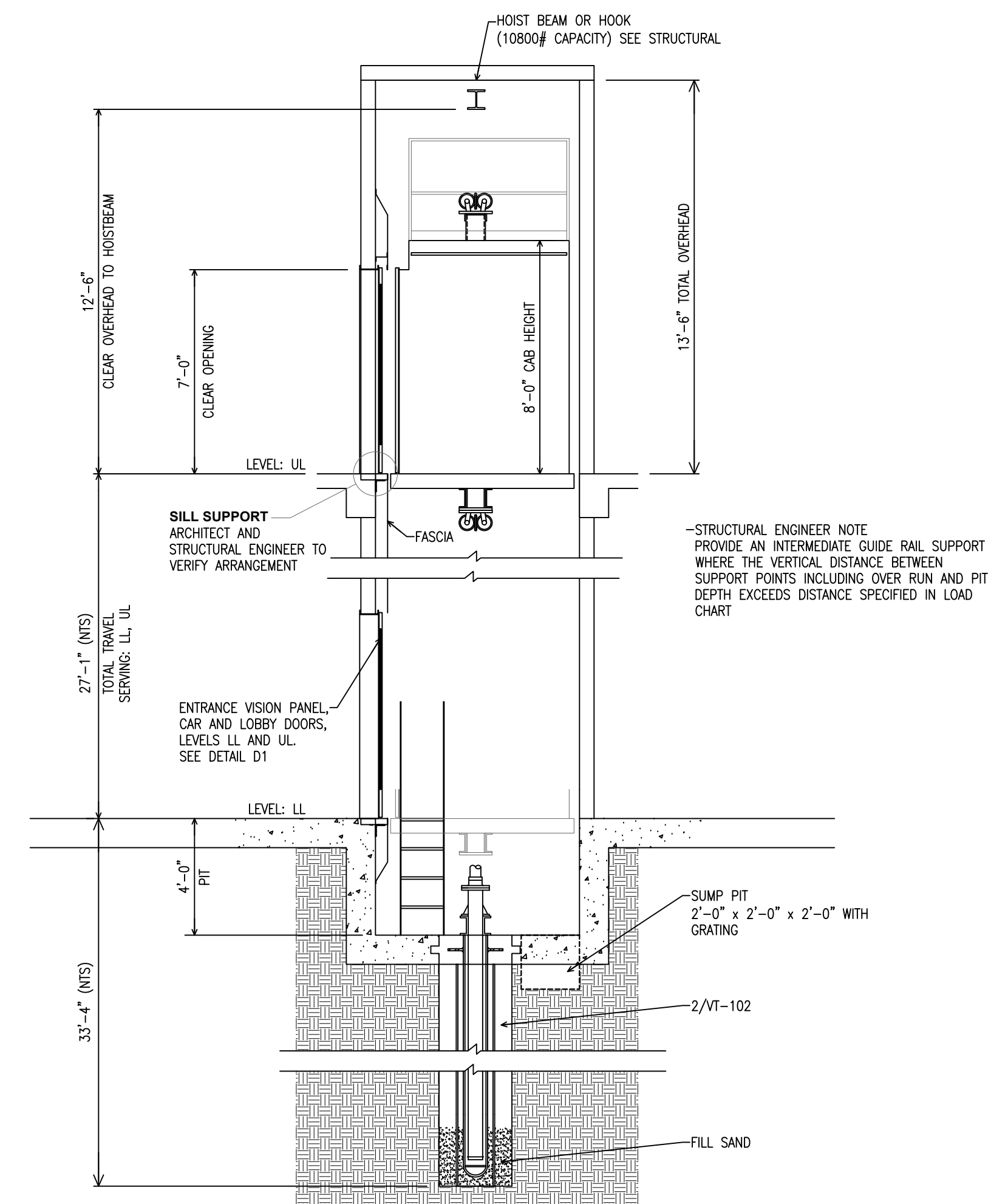
Scale: 1/4" = 1'-0"

100% PLANS - FOR CONSTRUCTION

Sheet 68 OF 68



2 WATERPROOF CYLINDER DETAIL
VT-102 SCALE: NTS
1/4"=1'
2 0 2 4 6 8 10
scale feet



1 SECTIONAL ELEVATION
VT-102 SCALE: 1/4"=1'-0"
1/4"=1'
2 0 2 4 6 8 10
scale feet