



DEPARTMENT OF ENVIRONMENTAL SERVICES

Division of Transportation
 Transit Bureau
 2100 Clarendon Boulevard, Suite 900, Arlington, VA 22201
 Phone: 703.228.3681 Fax: 703.228.7548 www.arlingtonva.us

Design Team:

Architectural/Engineering Services

STV Incorporated
 2722 Merrilee Dr. Suite 350, Fairfax, VA 22031
 571.633.2220 www.stvinc.com

Vertical Transportation

Van Deusen & Associates
 1025 Connecticut Ave, NW, Suite 1000, Washington, DC 20036
 202.828.1236 www.vdassoc.com

Cost Estimating & Scheduling

VJ Associates
 1825 K Street NW, Suite 1100, Washington, DC 20006
 202.609.7480 www.vjassociates.com

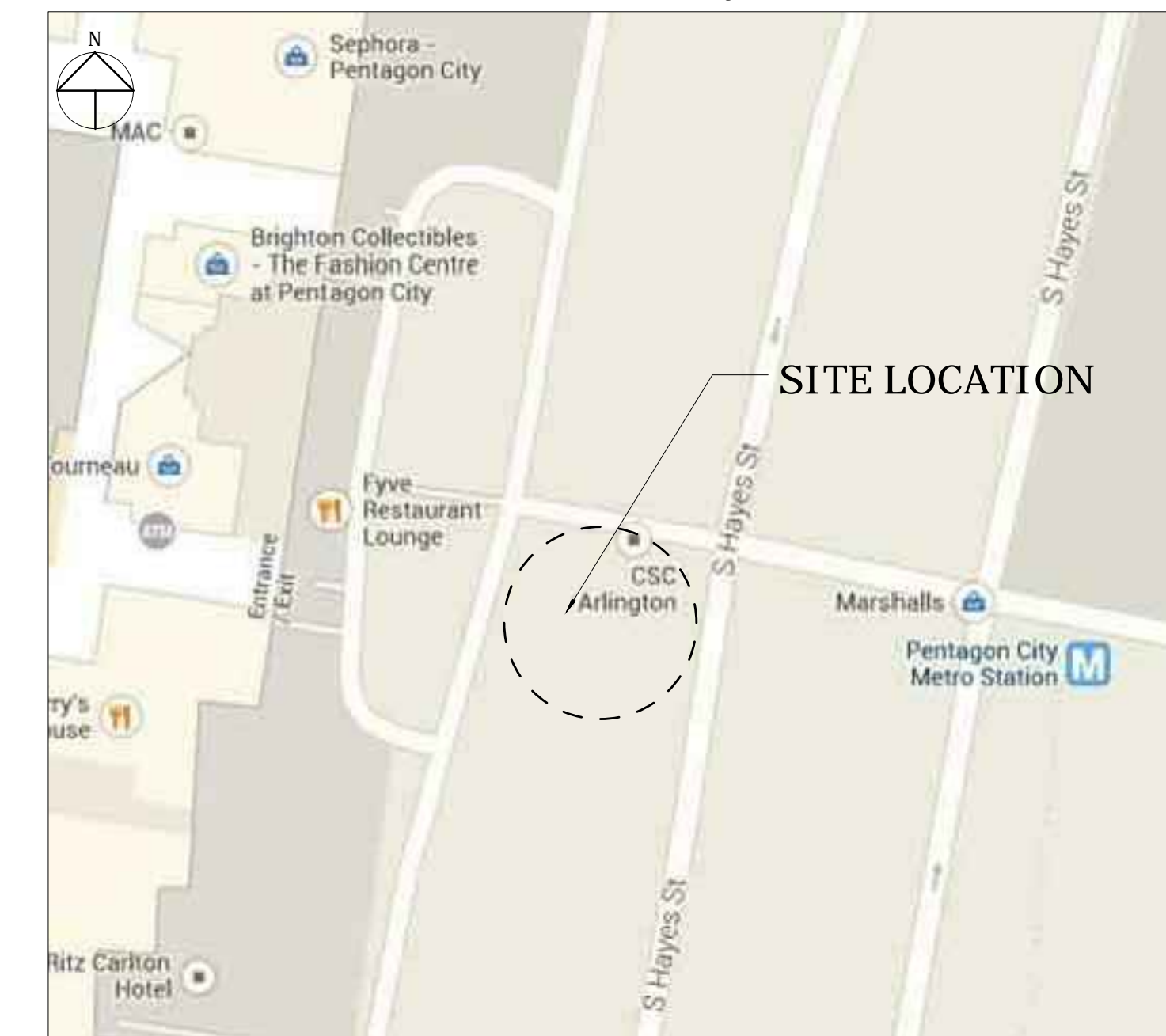
Survey and Utility Designation

Cervantes & Associates, P.C.
 4229 Lafayette Center Dr, Suite 1125, Chantilly, VA 20151
 703.691.4114 www.cervantes-associates.com

Location Map

SCALE: N.T.S.

Vicinity



100% Design Drawings For: Pentagon City Station Second Elevator Project

South Hayes Street

STV Project Number: 4018669

WMATA Project Number: 251666

Table of Contents:

GENERAL

G-000 Cover Sheet

CIVIL

C-100 Existing Conditions
 C-101 Demolition Plan
 C-200 Site Plan
 C-210 Enlarged Site Plan
 C-310 Enlarged Grading Plan
 C-400 Erosion & Sediment Control Plan
 C-401 Erosion & Sediment Control Notes & Details
 C-500 Site Utility Plan
 C-501 Utility Profiles
 C-MOT-1 Maintenance of Traffic Plan

ARCHITECTURAL

A-001 Architectural Notes and Symbols
 A-002 Codes Summary
 AD-101 Demolition Plan
 A-101 Floor Plan
 A-102 West Elevator Plans
 A-103 East Elevator Plans
 A-201 West Head House Elevations
 A-202 East Head House Elevations
 A-301 West Elevator Building Sections
 A-302 East Elevator Building Sections
 A-303 Elevator Head House Sections
 A-501 Elevator Head House Details
 A-502 Elevator Head House Elevation Details
 A-503 West Elevator Headhouse Details
 A-601 Door and Window Schedules
 A-701 Signage Details Sheet 1 of 2
 A-701A Signage Details Sheet 2 of 2
 A-702 Elevator Cab Plans and Elevations
 A-703 Elevator Details
 AWP-101 Waterproofing Sheet 1 of 4
 AWP-102 Waterproofing Sheet 2 of 4
 AWP-103 Waterproofing Sheet 3 of 4
 AWP-104 Waterproofing Sheet 4 of 4

STRUCTURAL

S-001 General Structural Notes and Legends
 S-101 Foundation Plans
 S-102 Elevator Mezzanine And Plaza Plans
 S-103 Elevator Head House Plans
 S-201 Elevations
 S-301 Concrete Sections
 S-302 Concrete Sections
 S-303 Steel Sections
 S-401 Enlarged Plans And Sections
 S-501 Typical Concrete Details
 S-502 Typical Concrete Details
 S-503 Typical Steel Details

MECHANICAL

M-001 Legend, Schedule and Details
 M-101 Mechanical Floor Plan and Elevations
 M-501 Control Diagrams

ELECTRICAL

E-001 Legend, Schedules and General Notes
 E-101 Partial Mezzanine Level Power Plan
 E-102 Partial Lighting and Power Plans
 E-601 Wiring Diagrams and Panel Schedule

FIRE ALARM

FA-001 Fire Alarm Legend, Abbreviations and Diagrams
 FA-101 Partial Mezzanine Level Fire Alarm Plan
 FA-501 Fire Alarm Details and Elevations

PLUMBING & FIRE PROTECTION

F-101 Partial Floor Plan And Detail
 P-101 Partial Floor Plan

COMMUNICATIONS

T-001 Communications Legend and Abbreviations
 T-101 Mezzanine Plan
 T-201 Street Level Elevations
 T-401 Mezzanine Communications Enlarged Plan
 T-501 CCTV Camera and Door Details
 T-502 Call Station Details
 T-601 Communications Block Diagram
 T-602 Security Block Diagram

EQUIPMENT

VT-101 Proposed Elevator Vertical Transportation
 VT-102 Proposed Elevator Vertical Transportation

I CERTIFY THAT THIS PROJECT WAS BUILT IN SUBSTANTIAL CONFORMANCE WITH THIS PLAN, UNLESS DULY NOTED IN THE ABOVE REVISION BLOCK.

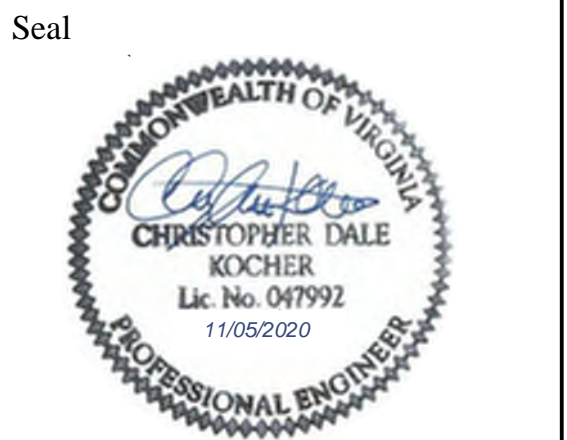
PROJECT MANAGER _____ DATE _____
 CONSTRUCTION MANAGER _____ DATE _____

General Notes:

- ALL ELEVATIONS ARE BASED ON THE NORTH AMERICAN VERTICAL DATUM OF 1988 (N.A.V.D. 88)
- ALL CONSTRUCTION WORK FOR THIS PROJECT SHALL CONFORM TO THE "ARLINGTON COUNTY, DEPARTMENT OF ENVIRONMENTAL SERVICES, CONSTRUCTION STANDARDS AND SPECIFICATIONS" MANUAL OF 2008 AND ANY SPECIAL PROVISIONS AND SPECIAL DESIGN FOR STREETS, STORM SEWER, AND UTILITY CONSTRUCTION AS PROVIDED ON THESE PLANS OR IN THE BID PROPOSAL. COPIES OF THE "CONSTRUCTION STANDARDS AND SPECIFICATIONS" MANUAL MAY BE PURCHASED AT A COST OF \$30.00 PER HARD COPY OR CAN BE DOWNLOADED AT NO COST AT: [HTTP://WWW.ARLINGTONVA.US/DEPARTMENTS/ENVIRONMENTALSERVICES/CPE/ENVIRONMENTALSERVICESPECS.ASPX](http://www.arlingtonva.us/departments/environmentalservices/cpe/environmentalservicespecs.aspx)
- THE CONTRACTOR SHALL CONTACT "MISS UTILITY" AT 811 FOR MARKING THE LOCATIONS OF EXISTING UNDERGROUND UTILITIES (i.e. WATER, SEWER, GAS, TELEPHONE, ELECTRIC, AND CABLE TV) AT LEAST 72 HOURS PRIOR TO ANY EXCAVATION OR CONSTRUCTION. THE CONTRACTOR IS REQUIRED TO IDENTIFY AND PROTECT ALL OTHER UTILITY LINES FOUND IN THE WORK SITE AREA BELONGING TO OTHER OWNERS THAT ARE NOT MEMBERS OF "MISS UTILITY".
- WITH 48 HOURS NOTICE, THE COUNTY WILL PROVIDE CONSTRUCTION STAKES FOR LINE AND GRADE AND THE PREPARATION OF CUT SHEETS RELATED TO THIS PROJECT AT NO CHARGE TO THE CONTRACTOR.
- THE LOCATION OF ALL EXISTING UTILITIES SHOWN ON THESE PLANS ARE FROM BEST AVAILABLE RECORDS AND MUST BE CONSIDERED TO BE APPROXIMATE. WHEN CONSTRUCTION ACTIVITY REACHES IN PROXIMITY TO EXISTING UTILITIES, THE TRENCHES SHALL BE OPENED A SUFFICIENT DISTANCE AHEAD OF THE WORK OR TEST FITS SHALL BE MADE TO VERIFY THE EXACT LOCATION AND INVERTS OF THE UTILITY TO ALLOW FOR POSSIBLE CHANGES IN THE LINE OR GRADE. THE CONTRACTOR SHALL BE RESPONSIBLE FOR ANY DAMAGE TO THE EXISTING UTILITIES AND THE RELATED STRUCTURES. ALL EXISTING UTILITY SYSTEMS SHALL BE PROTECTED TO PREVENT DAMAGE DURING THE CONTRACTOR'S OPERATIONS. ANY SYSTEM DAMAGED SHALL BE PROMPTLY REPAIRED AT NO COST TO THE OWNER.
- FOR CONTROL AND MAINTENANCE OF TRAFFIC REFER TO CONTRACT SPECIAL PROVISION, MAINTENANCE OF TRAFFIC, LOCATED IN THE BID PROPOSAL.
- CONCRETE CRADLES SHALL BE PROVIDED AT ALL SANITARY LATERAL CROSSINGS. IF SO DESIRED BY THE ENGINEER, ADDITIONAL CONCRETE CRADLES SHALL BE PROVIDED TO PROTECT OTHER UTILITIES WITHIN THE CONSTRUCTION LIMITS. THE CONCRETE CRADLES AND ENCASEMENTS SHALL BE PAID FOR AT THE STIPULATED UNIT PRICE.
- ALL UNSUITABLE BACKFILL MATERIAL SHALL BE DISPOSED OF BY THE CONTRACTOR AT HIS OWN EXPENSE. SUITABLE BACKFILL MATERIAL MAY BE REUSED ANYWHERE ON THE JOB AND MAY BE STOCKPILED FOR REUSE. STORING, TRANSPORTATION, LOADING, AND OTHER ASSOCIATED COST ARE TO BE INCLUDED IN THE UNIT BID PRICE FOR PIPE IN PLACE. STORAGE AREAS WILL NOT BE PROVIDED BY ARLINGTON COUNTY.
- ALL CONCRETE ON THIS PROJECT SHALL BE CLASS "A-3", AIR ENTRAINED CONCRETE UNLESS OTHERWISE NOTED. THE CONTRACTOR SHALL USE A CURING COMPOUND TO TREAT ALL EXPOSED CONCRETE.
- THE REMOVAL COST OF ANY EXISTING PAVEMENT, CURB AND GUTTER, SIDEWALKS, APRONS, ETC. IS TO BE INCLUDED IN THE UNIT PRICE BID FOR EXCAVATION. THE CONTRACTORS ARE HEREBY ADVISED THAT THEY MAY DUMP EXCAVATED CONCRETE CURB AND GUTTER AND SIDEWALK (NO REINFORCING STEEL OR WIRE) AT ARLINGTON COUNTY TRADES CENTER LOCATED AT 4300 29TH STREET SOUTH.
- THE CONTRACTOR SHALL PROVIDE ACCESS THROUGH THE SITE AS DIRECTED BY THE ENGINEER AT ALL TIMES DURING CONSTRUCTION AND SHALL ENSURE THE SAFETY OF PEDESTRIANS FROM TRAFFIC AND CONSTRUCTION HAZARDS.
- EXISTING DRAINAGE FACILITIES AFFECTED BY THIS PROPOSED PROJECT SHALL BE CLEANED OUT TO THE SATISFACTION OF THE COUNTY. THE COST IS INCIDENTAL AND SHALL BE INCLUDED IN THE CONTRACT PRICE OF OTHER ITEMS.
- CONTRACTOR SHALL NOT DISTURB OR REMOVE ANY TRAFFIC CONTROL SIGNS, PARKING METERS OR ANY OTHER TRAFFIC CONTROL DEVICE WITHOUT PRIOR PERMISSION FROM THE TRANSPORTATION DIVISION AT (703) 228-3575 OR 228-6512.
- PAVEMENT MARKINGS AND TRAFFIC CONTROL SIGNS THAT PERTAIN TO THIS PROJECT SHALL BE PROVIDED AND INSTALLED BY ARLINGTON COUNTY TRAFFIC ENGINEERING BUREAU. THE CONTRACTOR SHALL COORDINATE WITH ARLINGTON COUNTY, TRAFFIC BUREAU.
- ABANDONING EXISTING STRUCTURES AND PIPELINES, EXCAVATE AND REMOVE EXISTING STRUCTURE AND STORM SEWER LINES OR ABANDON IN PLACE BY FILLING PIPE WITH FLOWABLE FILL AND PLUGGING AT ALL OPEN ENDS. EXCAVATE AND REMOVE STRUCTURE TO A MINIMUM OF 2 FEET BELOW FINISHED GRADE. FILL THE STRUCTURE WITH SAND OR #57 AGGREGATE MATERIAL. THE PRICE FOR ABOVE SHALL BE INCLUDED IN THE UNIT PRICE BID FOR THE PIPE IN PLACE.
- EXISTING UTILITY SYSTEMS SHALL BE PROTECTED TO PREVENT DAMAGE DURING THE CONTRACTOR'S OPERATIONS. ANY SYSTEMS DAMAGED SHALL BE PROMPTLY REPAIRED AT NO COST TO THE OWNER.
- HELICAL PILE FOUNDATIONS AS DEPICTED WITHIN THE CONSTRUCTION DOCUMENTS ARE CONCEPTUAL BASED ON A PROPRIETARY PRODUCT SYSTEM. THE DESIGN THEREOF SHALL BE FINALIZED AS PART OF THE DELEGATED DESIGN UNDER THE GENERAL CONSTRUCTION CONTRACT.
- THE INSTALLATION OF THE ELEVATOR WILL BE COMPLETED BY OTHERS. SUBMIT THE ELEVATOR PERMIT TO STEVE FRANCISCO IN CODE ENFORCEMENT. HIS CONTACT NUMBER IS 703-228-3874



DEPARTMENT OF ENVIRONMENTAL SERVICES
 Division of Transportation
 Transit Bureau
 2100 Clarendon Boulevard, Suite 900
 Arlington, VA 22201
 Phone: 703.228.3681
 Fax: 703.228.7548



Approvals	Date
Tracy D. Twyman, P.C. WMATA PROJECT MANAGER	11/20/2020
[Signature] FD&C BUREAU CHIEF	11/23/20
Azan S. Jaymand FD&C PROJECT MANAGER	11/23/20
Lynn Rivers TRANSIT BUREAU CHIEF	11/23/20
Robin MacChanny TRANSIT PROJECT MANAGER	11/23/20
[Signature] WATER, SEWER STREETS BUREAU CHIEF	11-23-20
Dennis M. Leach TRANSPORTATION DIRECTOR	11/23/20

Revisions	Date
ISSUED FOR CONSTRUCTION	11-20-2020

Project Name and Location
**Pentagon City Station
 Elevator Project**
 Cover Sheet
 South Hayes Street
 G-000

Designed: CK
 Drawn: CK
 Checked: AK
 Miss Utility Transmittal #:

Filename:
 Path:
 Plotted:
 Plotted by:

Scale: NONE

100% PLANS - FOR
 CONSTRUCTION

Sheet
 1 OF 68

SYMBOL LIST

SYMBOLS:	DESCRIPTION
360◀	360 DEGREE CCTV CAMERA
EL◀	ELEVATOR CCTV CAMERA
CB	CALL-FOR-AID
CS	CALL STATION
EACS	ACCESS CONTROL ENCLOSURE
DC	MAGNETIC DOOR CONTACT
REX	REQUEST TO EXIT PUSHBUTTON
DS	DOOR STRIKE
CR	CARD READER
JB	JUNCTION BOX
☒	LOCKABLE NEMA ENCLOSURE

ABBREVIATIONS

A, AMP	AMPERES
AC	ALTERNATING CURRENT
AF	AMPERE FUSE; AMPERE FRAME
AFF	ABOVE FINISHED FLOOR
AWG	AMERICAN WIRE GAUGE
C	CONDUIT
CAM	CCTV CAMERA
CCTV	CLOSED CIRCUIT TELEVISION
DWG	DRAWING
ELEC	ELECTRICAL (EQUIPMENT OR WIRING)
G, GND	GROUND
JB	JUNCTION BOX
KW	KILOWATTS
KWH	KILOWATT-HOURS
LED	LIGHT EMITTING DIODE
MCB	MAIN CIRCUIT BREAKER
MIN	MINIMUM
NIC	NOT IN CONTRACT
NTS	NOT TO SCALE
PB	PULL BOX
PH	PHASE
PNL	PANEL
POE	POWER PANEL
PP	POWER OVER ETHERNET
PWR	POWER
RGS	RIGID GALVANIZED STEEL
SW	SWITCH
TYP	TYPICAL
UTP	UNSHIELDED TWISTED PAIR
V	VOLTS
VA	VOLT AMPERES
W	WATTS
W/	WITH

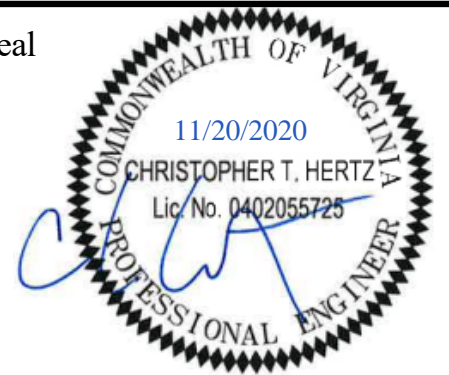


ARLINGTON
VIRGINIA

DEPARTMENT OF
ENVIRONMENTAL SERVICES

Division of Transportation
Transit Bureau
2100 Clarendon Boulevard, Suite 900
Arlington, VA 22201
Phone: 703.228.3681
Fax: 703.228.7548

Seal



Approvals

Date

WMATA PROJECT MANAGER

FD&C BUREAU CHIEF

FD&C PROJECT MANAGER

TRANSIT BUREAU CHIEF

TRANSIT PROJECT MANAGER

WATER, SEWER STREETS BUREAU CHIEF

TRANSPORTATION DIRECTOR

Revisions

Date

ISSUED FOR CONSTRUCTION 11-20-2020

Filename: 4018669_T-3D0000.rvt

Path: I:\Projects\4018669\

Plotted: 5/6/2020 8:33:03 AM

Plotted by:

Scale:

None

100% PLANS - FOR
CONSTRUCTION

Sheet

59 OF 68

Project Name and Location
**Pentagon City Station
Elevator Project**
 Communications Legend and Abbreviations
 South Hayes Street
 T-001

Designed: P. Ebert
 Drawn: P. Ebert
 Checked: C. Hertz
 Miss Utility Transmittal #:



Approvals _____ Date _____

WMATA PROJECT MANAGER _____

FD&C BUREAU CHIEF _____

FD&C PROJECT MANAGER _____

TRANSIT BUREAU CHIEF _____

TRANSIT PROJECT MANAGER _____

WATER, SEWER STREETS BUREAU CHIEF _____

TRANSPORTATION DIRECTOR _____

Revisions _____ Date _____

ISSUED FOR CONSTRUCTION 11-20-2020

Designed: P. Ebert

Drawn: P. Ebert

Checked: C. Hertz

Miss Utility Transmittal #:

Filename: 4018669_T-3D0000.rvt

Path: I:\Projects\4018669\

Plotted: 5/6/2020 8:33:06 AM

Plotted by:

Scale: 1/8" = 1'

100% PLANS - FOR
CONSTRUCTION

Sheet 60 OF 68

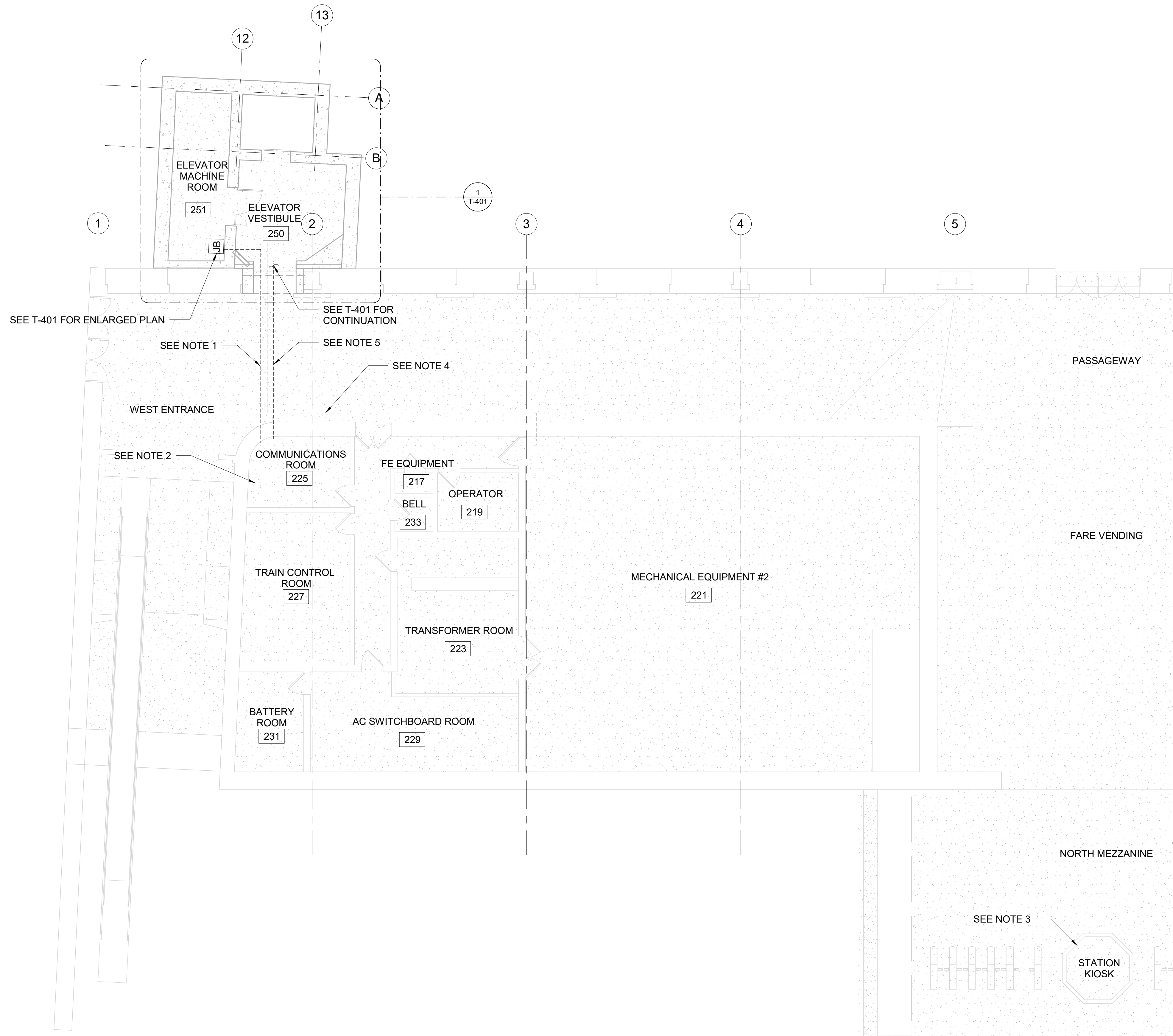
NOTES:

- CONTRACTOR SHALL FURNISH AND INSTALL (2) 2" CONDUITS FROM THE JUNCTION BOX IN ELEVATOR MACHINE ROOM 251 TO COMMUNICATIONS ROOM 225. CONDUITS SHALL STUB OUT ABOVE THE EXISTING CABLE TRAY WITHIN COMMUNICATIONS ROOM 225 AND TERMINATE WITH A NIPPLE TO PROTECT CABLES FROM ABRASION DURING INSTALLATION. THE CONDUITS SHALL ALSO HAVE PULL STRINGS LEFT IN PLACE FOR FUTURE INSTALLATIONS.
CONDUIT 1: 12-CAT6
CONDUIT 2: SPARE
- IT IS THE RESPONSIBILITY OF THE INSTALLATION CONTRACTOR TO INSTALL CAT6 UTP (UNSHIELDED TWISTED PAIR), CMP (COMMUNICATIONS PLENUM) CABLING AND CAT6 CONNECTIVITY HARDWARE AS DESCRIBED ON THE PROVIDED BLOCK DIAGRAMS FOR AN ANSI/TIA-568-C COMPLIANT SYSTEM.
THE INSTALLATION SHALL INCLUDE PERMANENT TERMINATING HARDWARE AT THE DEVICE OUTLET END I.E. BISCUIT JACK OR WALL MOUNT BOX TERMINATED ON A JACK WITH IDC (INSULATION DISPLACEMENT CONNECTOR) CONNECTION AND A FACTORY MADE CAT6 PATCH CABLE TO SERVE EQUIPMENT. THE INSTALLATION SHALL INCLUDE PERMANENT TERMINATING HARDWARE AT THE COMMUNICATIONS ROOM END IN THE FORM OF A PATCH PANEL MOUNTED WITHIN THE EXISTING EQUIPMENT RACKS. IF INSTALLING A NEW PATCH PANEL VERIFY RACK AND RU (RACK UNIT) LOCATION WITH WMATA IT/NCs BEFORE INSTALLATION. ALL CAT6 CIRCUITS WILL CROSS-CONNECT WITH FACTORY TERMINATED PATCH CABLE FROM THE PATCH PANEL TO NETWORK EQUIPMENT APPROPRIATE TO THE LENGTH NECESSARY TO REACH THE NETWORK SWITCH. ALL CAT6 PERMANENT LINK CIRCUITS ARE NOT TO EXCEED 90M (295FT) FROM PATCH PANEL TO OUTLET AND TOTAL CIRCUIT LENGTH IS NOT TO EXCEED MORE THAN 100M (328FT) WITH PATCH CABLES. ALL CAT6 CIRCUITS ARE TO BE TERMINATED USING THE "T-568B" PIN-PAIR ASSIGNMENT STANDARD. ALL CAT6 CIRCUITS (PATCH PANEL TO OUTLET) ARE TO BE TESTED TO APPLICABLE ANSI/TIA-568-C.2 CAT6 TESTING STANDARDS.

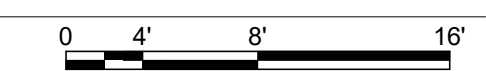
PROVISION MUST BE MADE TO IT/NCs NETWORK ENGINEERING FOR UPGRADING THE EXISTING CER (COMMUNICATIONS EQUIPMENT ROOM) 205 NETWORK SWITCH. WMATA IT/NCs WILL PROVIDE AND INSTALL THE UPGRADED NETWORK SWITCH.

REFER TO THESE STANDARDS AND PRACTICES AS A MINIMUM OF QUALITY FOR THE INSTALLATION:
ANSI/TIA-568-C.0, "GENERIC TELECOMMUNICATIONS CABLING FOR CUSTOMER PREMISES"
ANSI/TIA-568-C.1, "COMMERCIAL BUILDING TELECOMMUNICATIONS CABLING STANDARD"
ANSI/TIA-568-C.2, "BALANCED TWISTED PAIR TELECOMMUNICATIONS CABLING AND COMPONENTS STANDARD"
ANSI/TIA-568-C.3, "OPTICAL FIBER CABLING AND COMPONENTS STANDARD" NOT APPLICABLE TO THIS PROJECT.

- CONTRACTOR SHALL VERIFY PROPER FUNCTIONALITY OF NEW SYSTEMS AT EXISTING STATION KIOSK. NEW SYSTEMS INCLUDES CCTV CAMERAS, ACCESS CONTROL EQUIPMENT, CALL-FOR-AIDS, AND CALL STATIONS.
- CONTRACTOR SHALL FURNISH AND INSTALL 1-CAT6 IN 1" CONDUIT FROM DATA CONCENTRATOR (DCON) IN MECHANICAL ROOM TO JUNCTION BOX IN ELEVATOR MACHINE ROOM FOR ELEVATOR REMOTE MONITORING SYSTEM.
- CONTRACTOR SHALL FURNISH AND INSTALL 3/4" CONDUIT FROM CAM #1 TO COMMUNICATIONS ROOM 225. CONDUIT SHALL STUB OUT ABOVE THE EXISTING CABLE TRAY WITHIN COMMUNICATIONS ROOM 225 AND TERMINATE WITH A NIPPLE TO PROTECT CABLE FROM ABRASION DURING INSTALLATION. THE CONDUIT SHALL ALSO HAVE PULL STRING LEFT IN PLACE FOR FUTURE INSTALLATIONS.



1
MEZZANINE FLOOR PLAN
T-101 SCALE 1/8"=1'





ARLINGTON VIRGINIA

DEPARTMENT OF ENVIRONMENTAL SERVICES

Division of Transportation
Transit Bureau
2100 Clarendon Boulevard, Suite 900
Arlington, VA 22201
Phone: 703.228.3681
Fax: 703.228.7548

NOTES:

1. MOUNT CAMERA ONTO ELEVATOR CANOPY STEEL BEAM. FINISH AND COLOR OF CAMERA SHALL BE WHITE.
2. MOUNT CAMERA ONTO METAL PANEL. FINISH AND COLOR OF CAMERA SHALL BE WHITE.
3. SEE SHEET T-501 FOR INSTALLATION DETAILS OF CCTV CAMERAS.
4. CALL-FOR-AID SHALL BE INTEGRATED INTO ELEVATOR HALL CALL STATION PANEL. CONTRACTOR SHALL COORDINATE WITH ELEVATOR MANUFACTURER. CONTRACTOR SHALL INCLUDE ELEVATOR HALL CALL STATION PANEL CONFIGURATION AS A PART OF SHOP DRAWINGS.
5. CAM #3 VIEWS PEDESTRIANS APPROACHING AND ENTERING ELEVATOR. CAM #4 VIEWS PEDESTRIANS EXISTING ELEVATOR.

Seal



Approvals

Date

WMATA PROJECT MANAGER

FD&C BUREAU CHIEF

FD&C PROJECT MANAGER

TRANSIT BUREAU CHIEF

TRANSIT PROJECT MANAGER

WATER, SEWER STREETS BUREAU CHIEF

TRANSPORTATION DIRECTOR

Revisions

Date

ISSUED FOR CONSTRUCTION 11-20-2020

Project Name and Location

Pentagon City Station
Elevator Project

Street Level Elevations

South Hayes Street
T-201

Designed: P. Ebert
Drawn: P. Ebert
Checked: C. Hertz
Miss Utility Transmittal #:

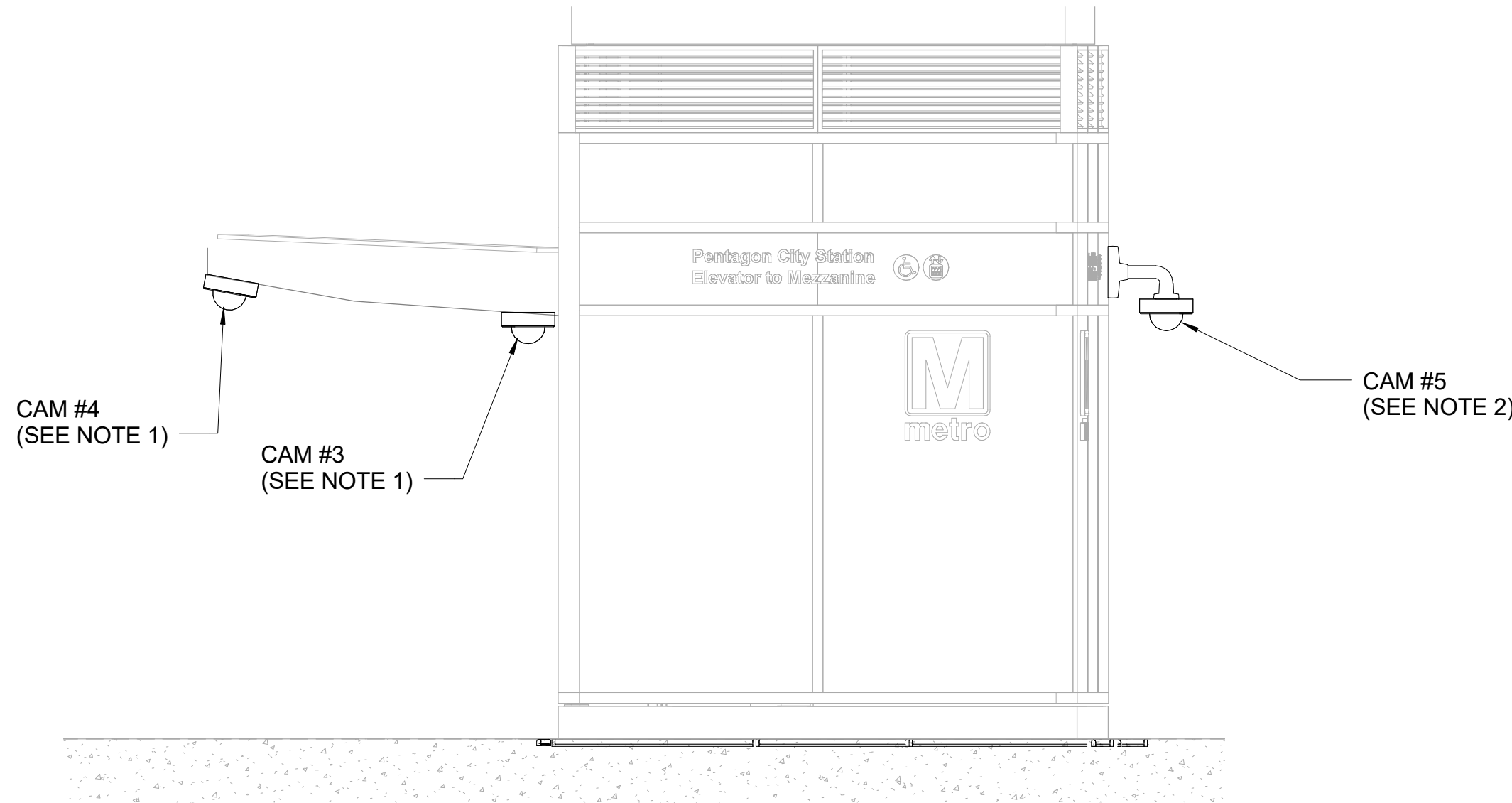
Filename: 4018669_T-3D0000.rvt
Path: I:\Projects\4018669\
Plotted: 5/6/2020 8:33:09 AM
Plotted by:

Scale:
1" = 2.5'

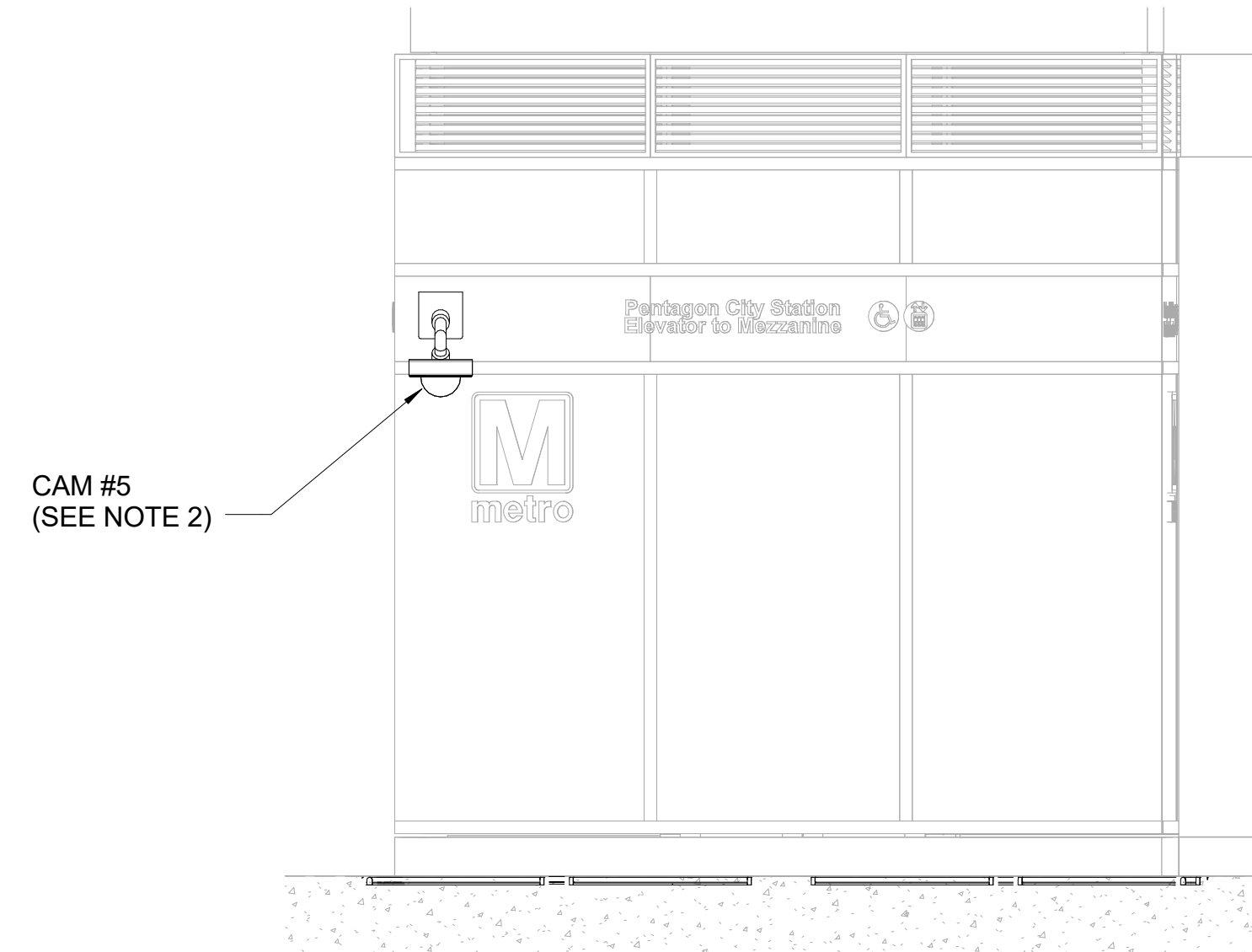
100% PLANS - FOR CONSTRUCTION

Sheet

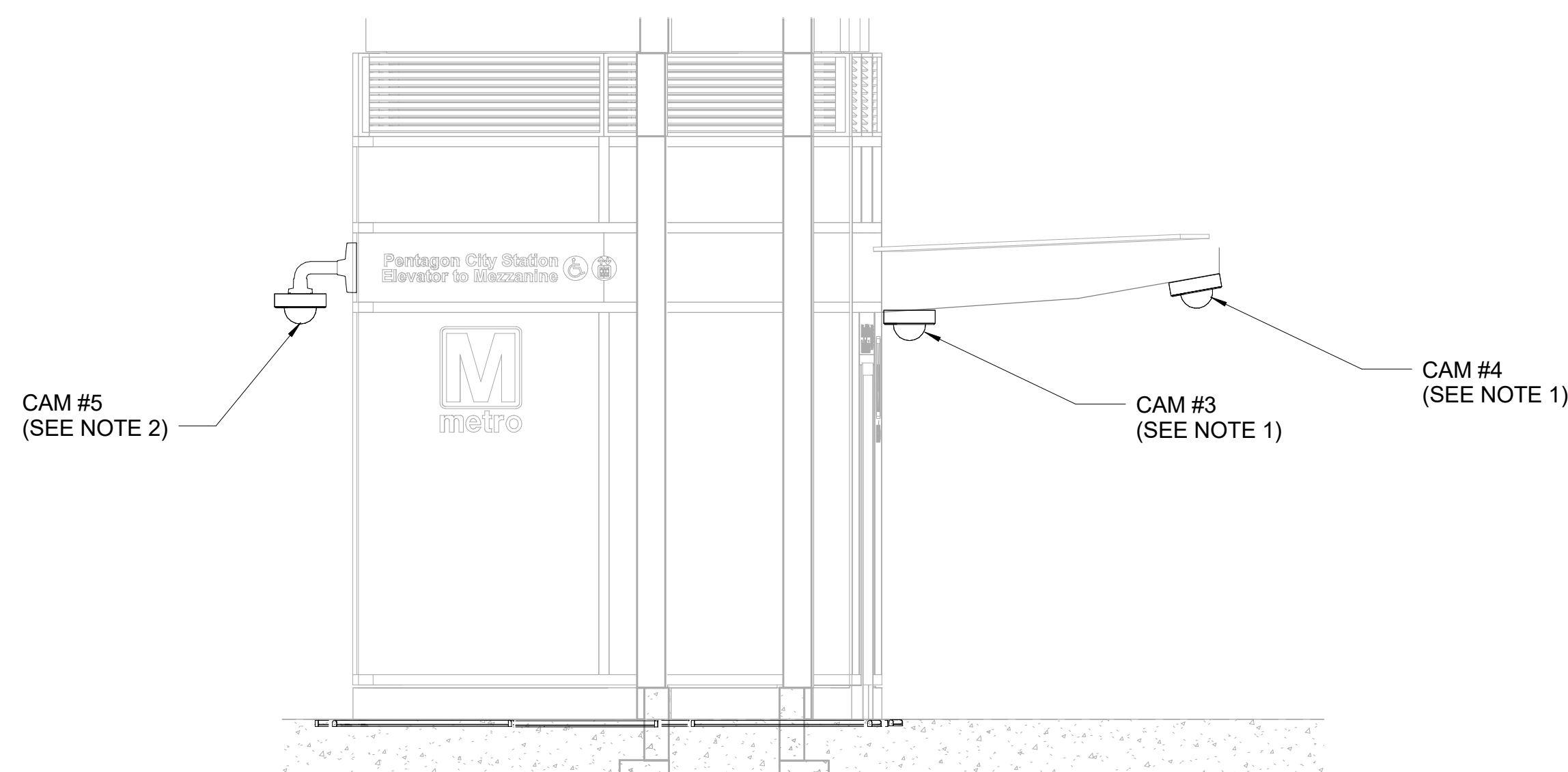
61 OF 68



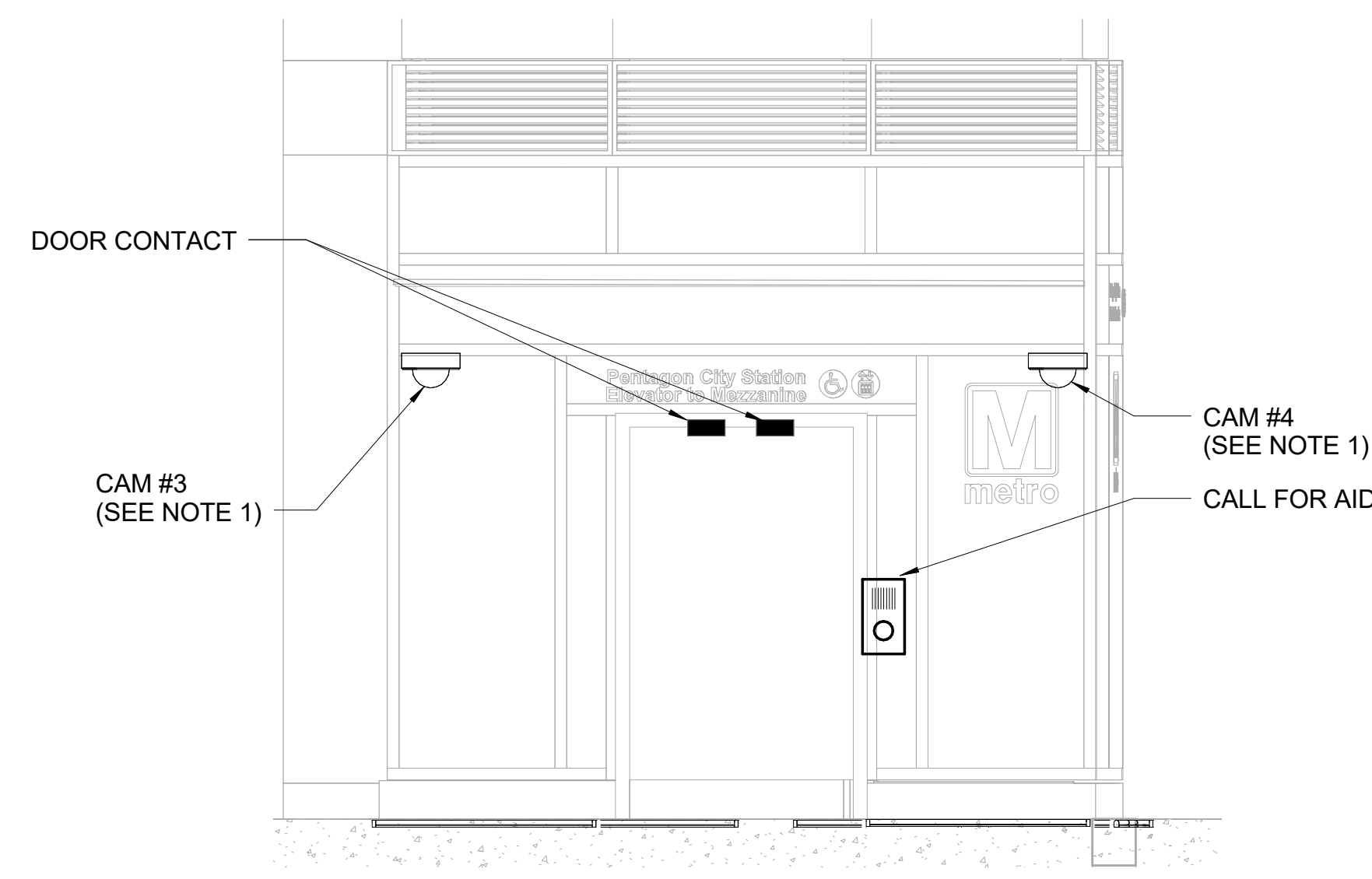
1 EAST ELEVATION
SCALE 1"=2.5'
0 1.25' 2.5' 5'



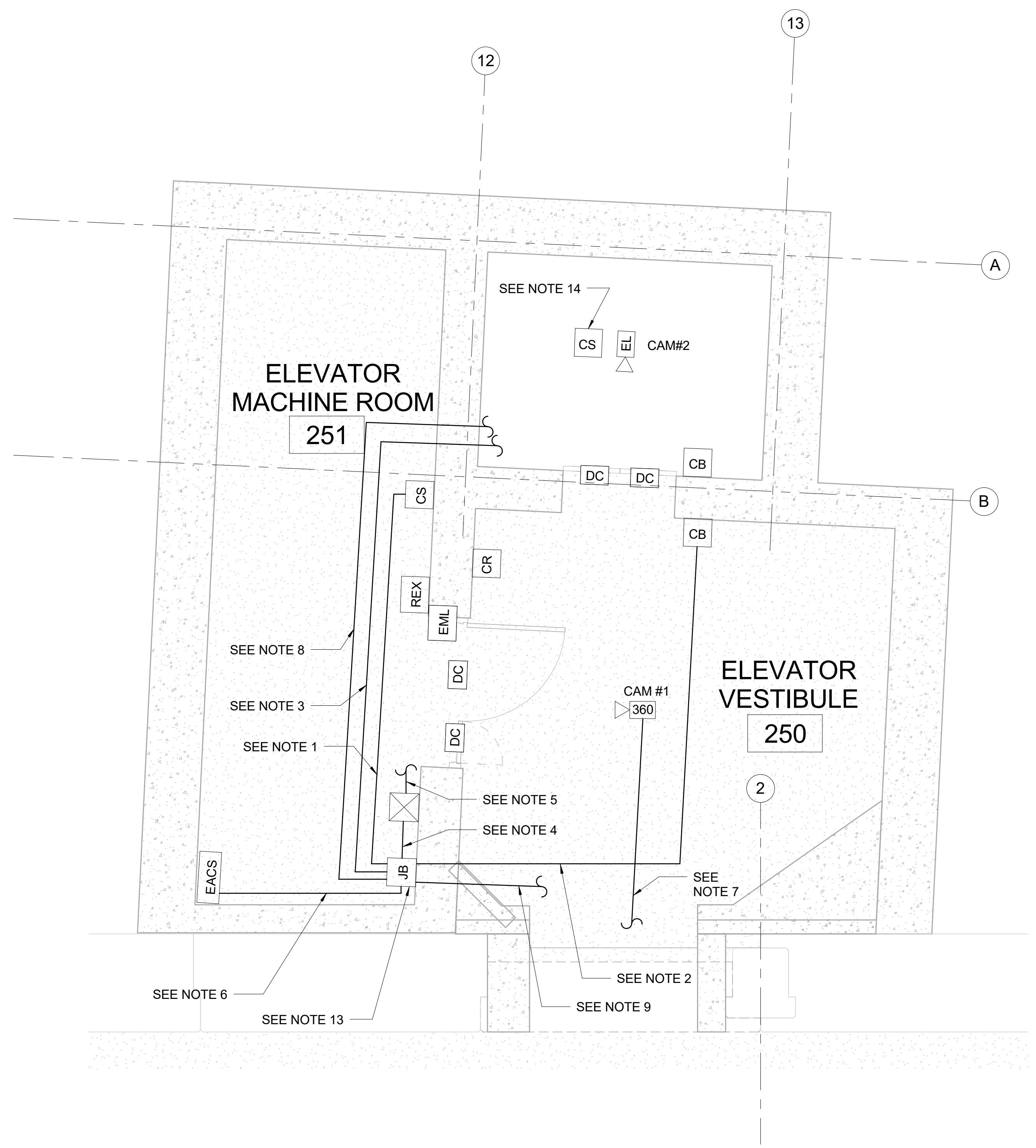
4 NORTH ELEVATION
SCALE 1"=2.5'
0 1.25' 2.5' 5'



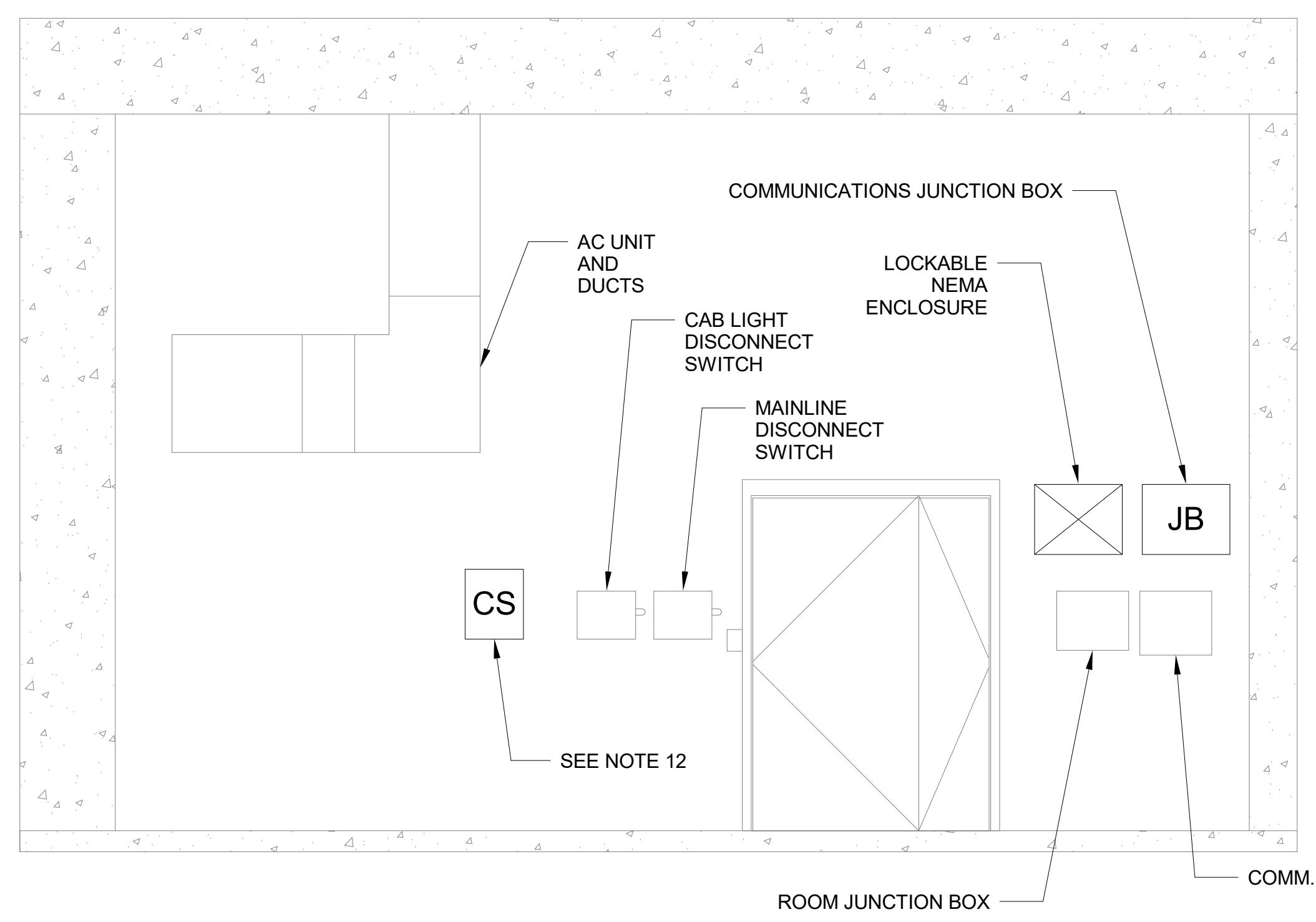
2 WEST ELEVATION
SCALE 1"=2.5'
0 1.25' 2.5' 5'



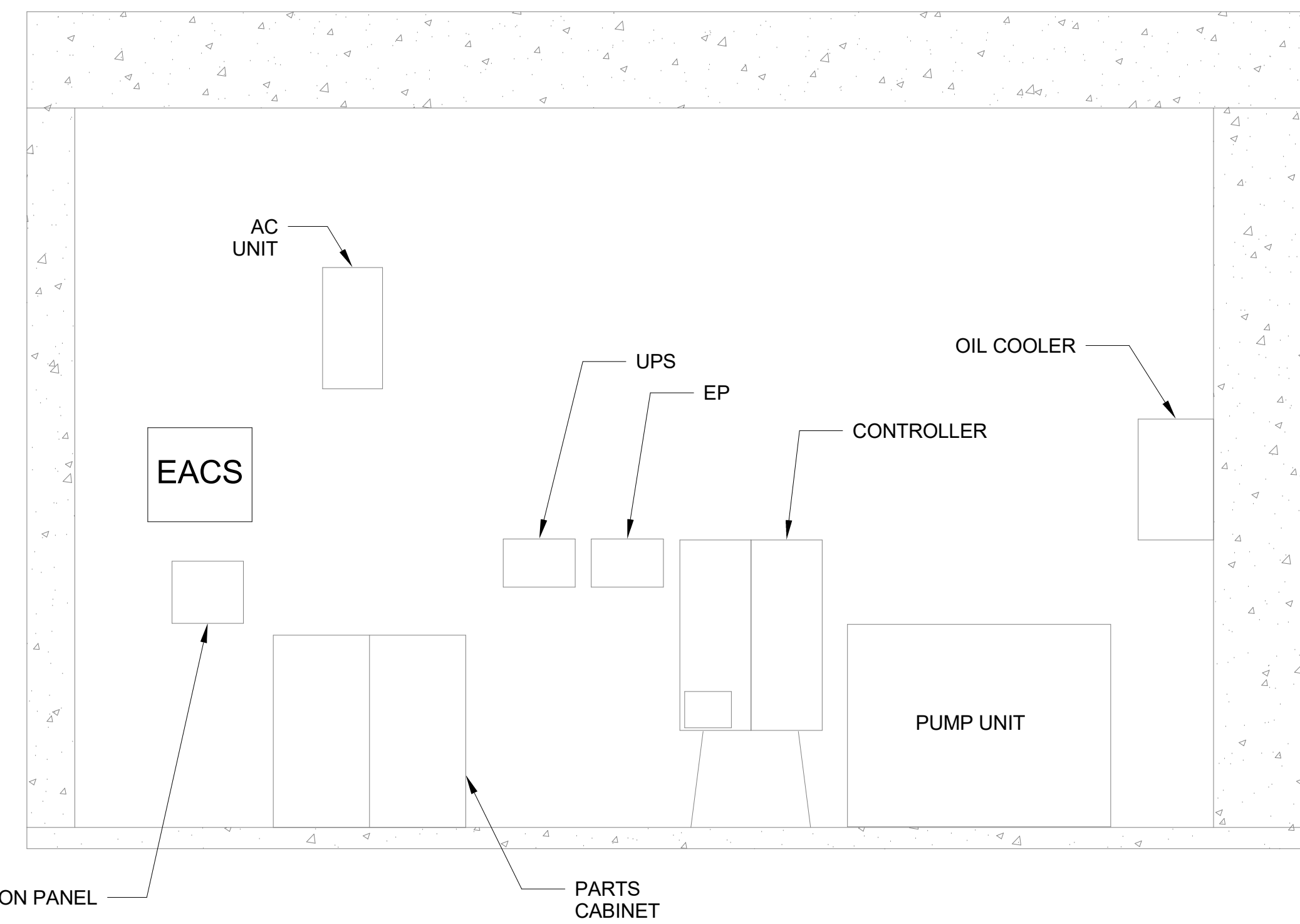
3 SOUTH ELEVATION
SCALE 1"=2.5'
0 1.25' 2.5' 5'



1 ENLARGED MEZZANINE FLOOR PLAN
 SCALE 1"=2.5'



2 ELEVATOR MACHINE ROOM EAST WALL ELEVATION
 SCALE 1"=2.5'



3 ELEVATOR MACHINE ROOM WEST WALL ELEVATION
 SCALE 1"=2.5'

- NOTES:**
- CONTRACTOR SHALL PROVIDE (1) CAT6 IN 3/4" CONDUIT FROM JUNCTION BOX IN ELEVATOR MACHINE ROOM TO ELEVATOR MACHINE ROOM CALL STATION.
 - CONTRACTOR SHALL PROVIDE (1) CAT6 IN 3/4" CONDUIT FROM JUNCTION BOX IN ELEVATOR MACHINE ROOM TO CALL-FOR-AID AT ELEVATOR LANDING - MEZZANINE LEVEL. CONDUIT SHALL BE ROUTED IN SUSPENDED CEILING.
 - CONTRACTOR SHALL PROVIDE (1) CAT6 IN 3/4" CONDUIT FROM JUNCTION BOX IN ELEVATOR MACHINE ROOM TO CALL-FOR-AID AT ELEVATOR LANDING - STREET LEVEL.
 - CONTRACTOR SHALL PROVIDE (3) CAT6 IN 1" CONDUIT FROM JUNCTION BOX IN ELEVATOR MACHINE ROOM TO LOCKABLE NEMA ENCLOSURE THAT HOUSES IP POE TO COAX CONVERTERS. NEMA ENCLOSURE SHALL BE A MINIMUM OF 12"X12"X6" TO ENSURE MINIMUM CAT6 CABLE BEND RADIUS IS NOT VIOLATED AND CABLE IS NOT DAMAGED.
 - CONTRACTOR SHALL PROVIDE (3) COAX AND (1) 2/C #18 AWG CABLES IN 1-1/2" CONDUIT FROM LOCKABLE NEMA ENCLOSURE THAT HOUSES IP POE TO COAX CONVERTERS TO ELEVATOR CABLE SPLICE BOX. COAXIAL CABLES SHALL SPLICE INTO COAXIAL TRAVELING CABLES.
 - CONTRACTOR SHALL PROVIDE (2) CAT6 AND (1) 2/C #18 AWG CABLES IN 3/4" CONDUIT FROM JUNCTION BOX IN ELEVATOR MACHINE ROOM TO ACCESS CONTROL ENCLOSURE. (1) 2/C #18 AWG CABLE CONTINUE TO LOCKABLE NEMA ENCLOSURE THAT HOUSES IP POE TO COAX CONVERTERS. FOR ACCESS CONTROL ENCLOSURE MINIMUM SIZE AND MOUNTING DETAILS SEE WMATA COMMUNICATIONS STANDARD DRAWING ST-CM-ACS-011.
 - CONTRACTOR SHALL PROVIDE (1) CAT6 IN 3/4" CONDUIT FROM COMMUNICATIONS ROOM TO CAM #1. CONDUIT SHALL BE ROUTED IN SUSPENDED CEILING.
 - CONTRACTOR SHALL PROVIDE (3) CAT6 IN 3/4" CONDUIT FROM JUNCTION BOX IN ELEVATOR MACHINE ROOM TO CAM #3, CAM #4, AND CAM #5. CONTRACTOR SHALL ROUTE CONDUIT INSIDE ELEVATOR SHAFT. CONTRACTOR SHALL COORDINATE WITH ELEVATOR MANUFACTURER. (2) 2" CONDUITS TO COMMUNICATIONS ROOM, SEE CONTINUATION ON T-101.
 - JUNCTION BOX SHALL BE SIZED TO ACCOMMODATE INDICATED CABLES AND CONDUITS.
 - SEE SHEET T-501 FOR INSTALLATION DETAILS OF CCTV CAMERAS.
 - SEE SHEET T-502 FOR INSTALLATION DETAILS OF CALL STATION.
 - CONTRACTOR SHALL FURNISH AND INSTALL 1-CAT6 IN 1" CONDUIT FROM JUNCTION BOX IN ELEVATOR MACHINE ROOM TO ELEVATOR REMOTE MONITORING SYSTEM.
 - ELEVATOR TOP OF CAR JACK LOCATION SHALL BE COORDINATED WITH ELEVATOR MANUFACTURER.



DEPARTMENT OF ENVIRONMENTAL SERVICES
 Division of Transportation
 Transit Bureau
 2100 Clarendon Boulevard, Suite 900
 Arlington, VA 22201
 Phone: 703.228.3681
 Fax: 703.228.7548



Approvals	Date
WMATA PROJECT MANAGER	
FD&C BUREAU CHIEF	
FD&C PROJECT MANAGER	
TRANSIT BUREAU CHIEF	
TRANSIT PROJECT MANAGER	
WATER, SEWER STREETS BUREAU CHIEF	
TRANSPORTATION DIRECTOR	

Revisions	Date
ISSUED FOR CONSTRUCTION	11-20-2020

Project Name and Location
**Pentagon City Station
 Elevator Project**
 Mezzanine Communications Enlarged Plan
 South Hayes Street
 T-401

Designed: P. Ebert
 Drawn: P. Ebert
 Checked: C. Hertz
 Miss Utility Transmittal #:

Filename: 4018669_T-3D0000.rvt
 Path: I:\Projects\4018669\ Plotted: 5/6/2020 8:33:10 AM
 Plotted by:

Scale: 1" = 2.5'

100% PLANS - FOR CONSTRUCTION



Approvals _____ Date _____

WMATA PROJECT MANAGER _____

FD&C BUREAU CHIEF _____

FD&C PROJECT MANAGER _____

TRANSIT BUREAU CHIEF _____

TRANSIT PROJECT MANAGER _____

WATER, SEWER STREETS BUREAU CHIEF _____

TRANSPORTATION DIRECTOR _____

Revisions _____ Date _____

ISSUED FOR CONSTRUCTION 11-20-2020

Project Name and Location
**Pentagon City Station
Elevator Project**
CCTV Camera and Door Details
South Hayes Street
T-501

Designed: P. Ebert
Drawn: P. Ebert
Checked: C. Hertz
Miss Utility Transmittal #:

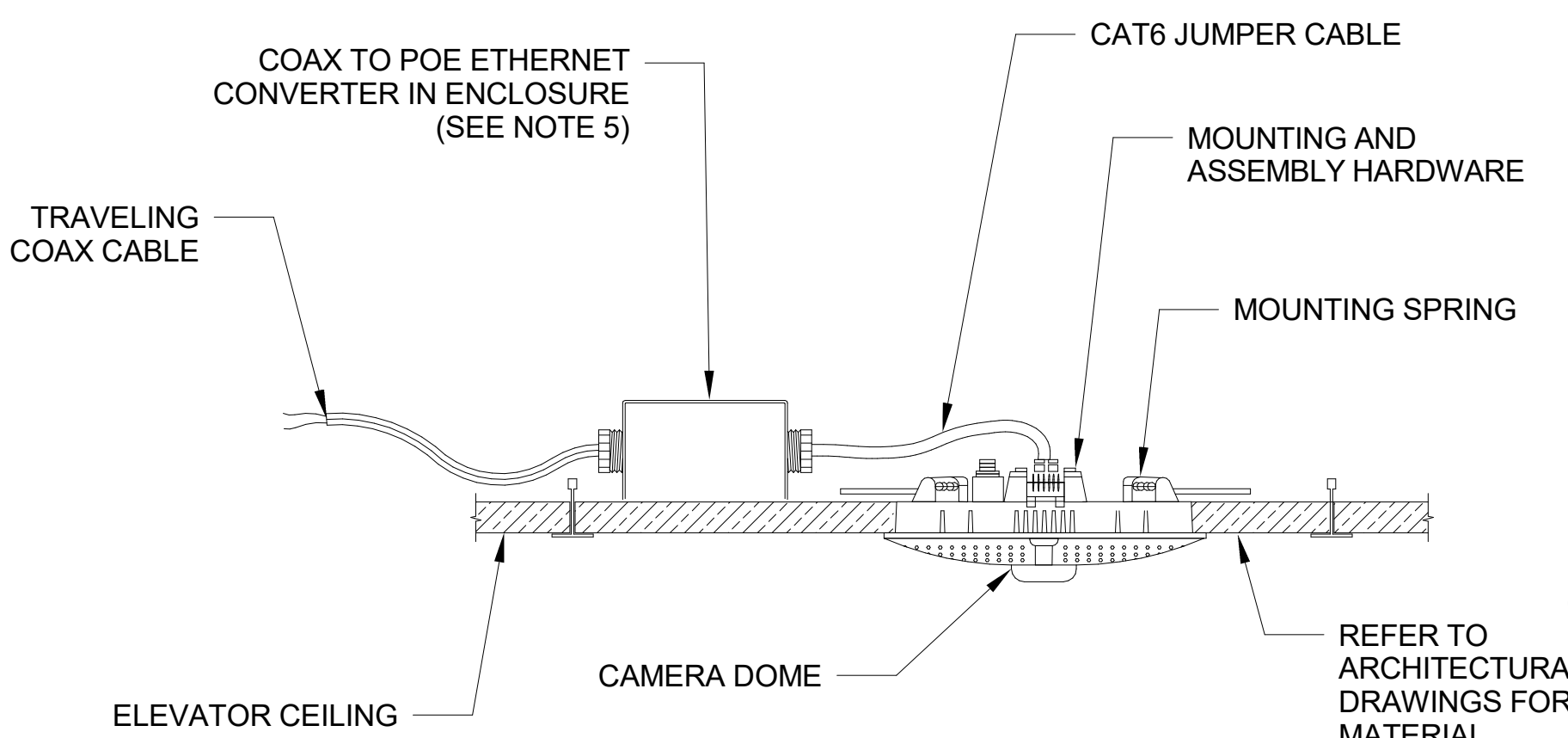
Filename: 4018669_T-3D0000.rvt
Path: I:\Projects\4018669\
Plotted: 5/6/2020 8:33:12 AM
Plotted by:

Scale: None

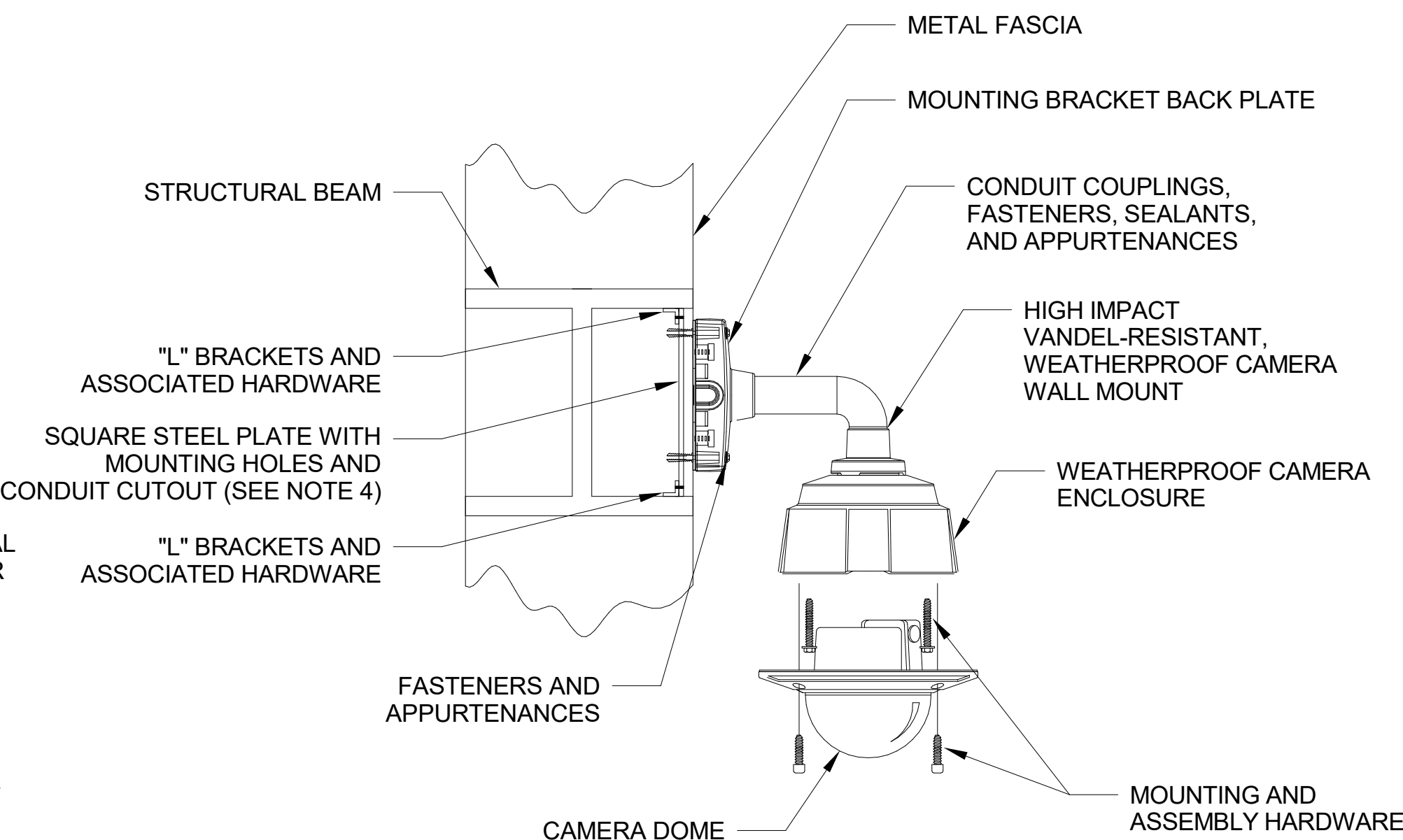
100% PLANS - FOR CONSTRUCTION

Sheet 63 OF 68

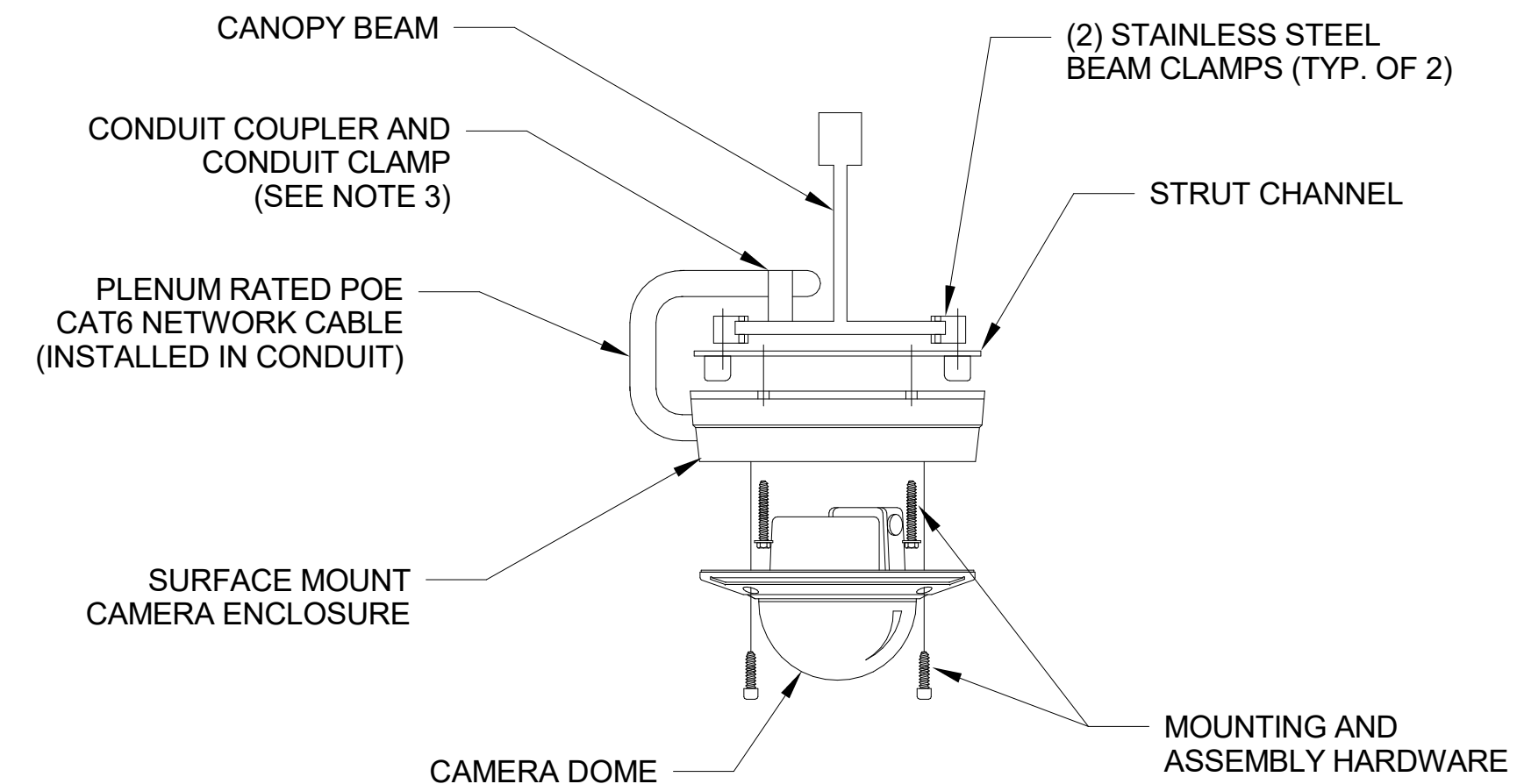
- NOTES:**
1. ALL MOUNTING HARDWARE SHALL BE PER MANUFACTURER'S RECOMMENDATION UNLESS OTHERWISE APPROVED BY WMATA.
 2. ALL DETAILS SHALL BE COORDINATED WITH FINAL PRODUCT SELECTION AND ARCHITECTURAL DETAILS. INSTALL ALL DEVICES IN ACCORDANCE WITH MANUFACTURERS INSTRUCTIONS AND RECOMMENDATIONS.
 3. CONDUIT SHALL BE ROUTED ALONG CANOPY BEAM.
 4. SQUARE STEEL PLATE SHALL FIT BETWEEN STRUCTURAL BEAM FLANGES. SQUARE STEEL PLATE WILL BE FLUSH WITH METAL FASCIA TO SUPPORT CAMERA AND CAMERA MOUNT WEIGHT. "L" BRACKETS SHALL EITHER BE WELDED OR FASTENED TO STRUCTURAL BEAM.
 5. NEMA ENCLOSURE SHALL BE A MINIMUM OF 12"X12"X6" TO ENSURE MINIMUM CAT6 CABLE BEND RADIUS IS NOT VIOLATED AND CABLE IS NOT DAMAGED.
 6. FOR ACCESS CONTROL DETAILS SEE WMATA COMMUNICATIONS STANDARD DRAWING ST-CM-ACS-003.
 7. FOR ACCESS CONTROL ENCLOSURE MINIMUM SIZE AND MOUNTING DETAILS SEE WMATA COMMUNICATIONS STANDARD DRAWING ST-CM-ACS-011.



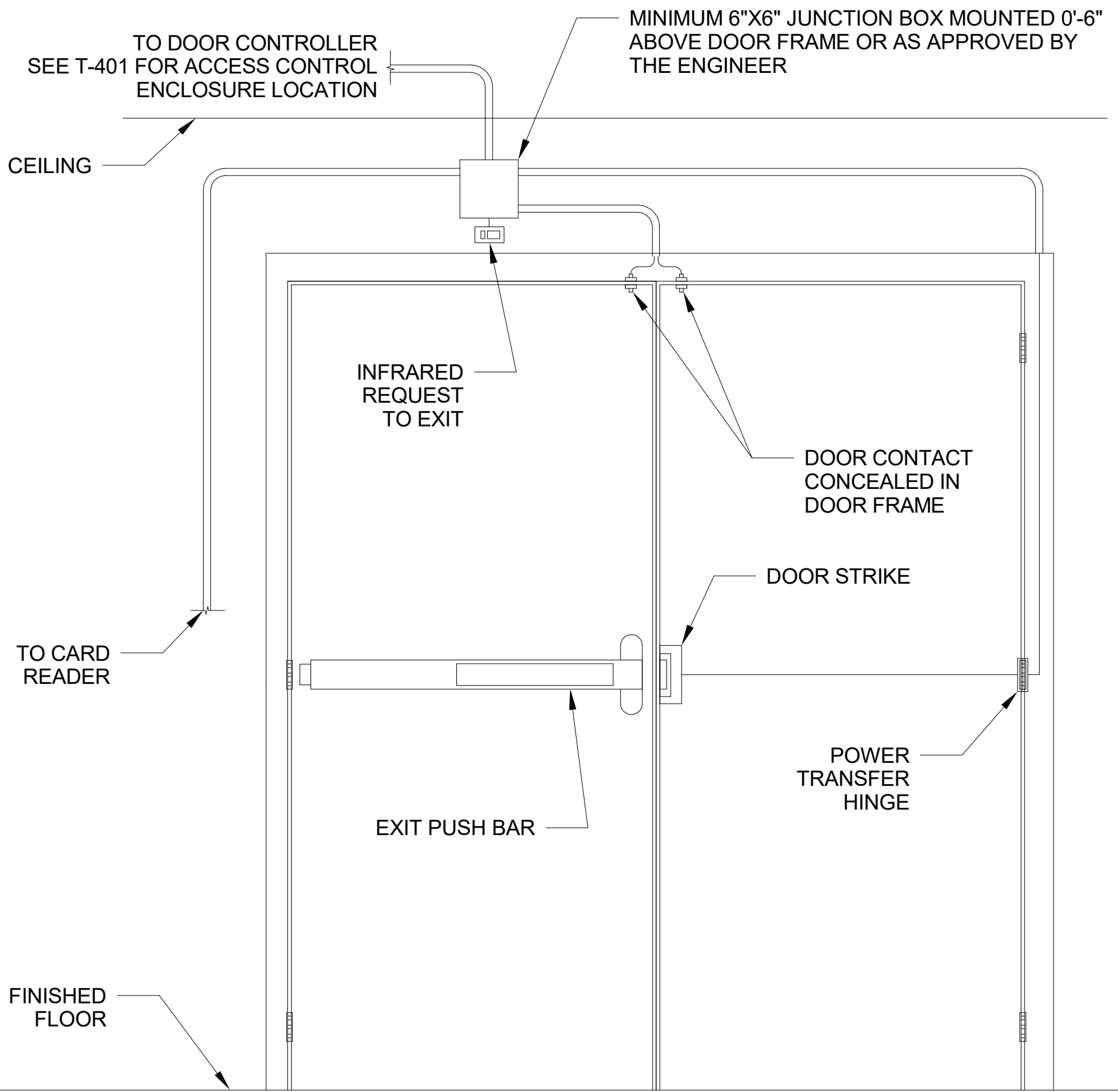
1 TYPICAL CEILING MOUNT ELEVATOR IP CAMERA
T-501 N.T.S.



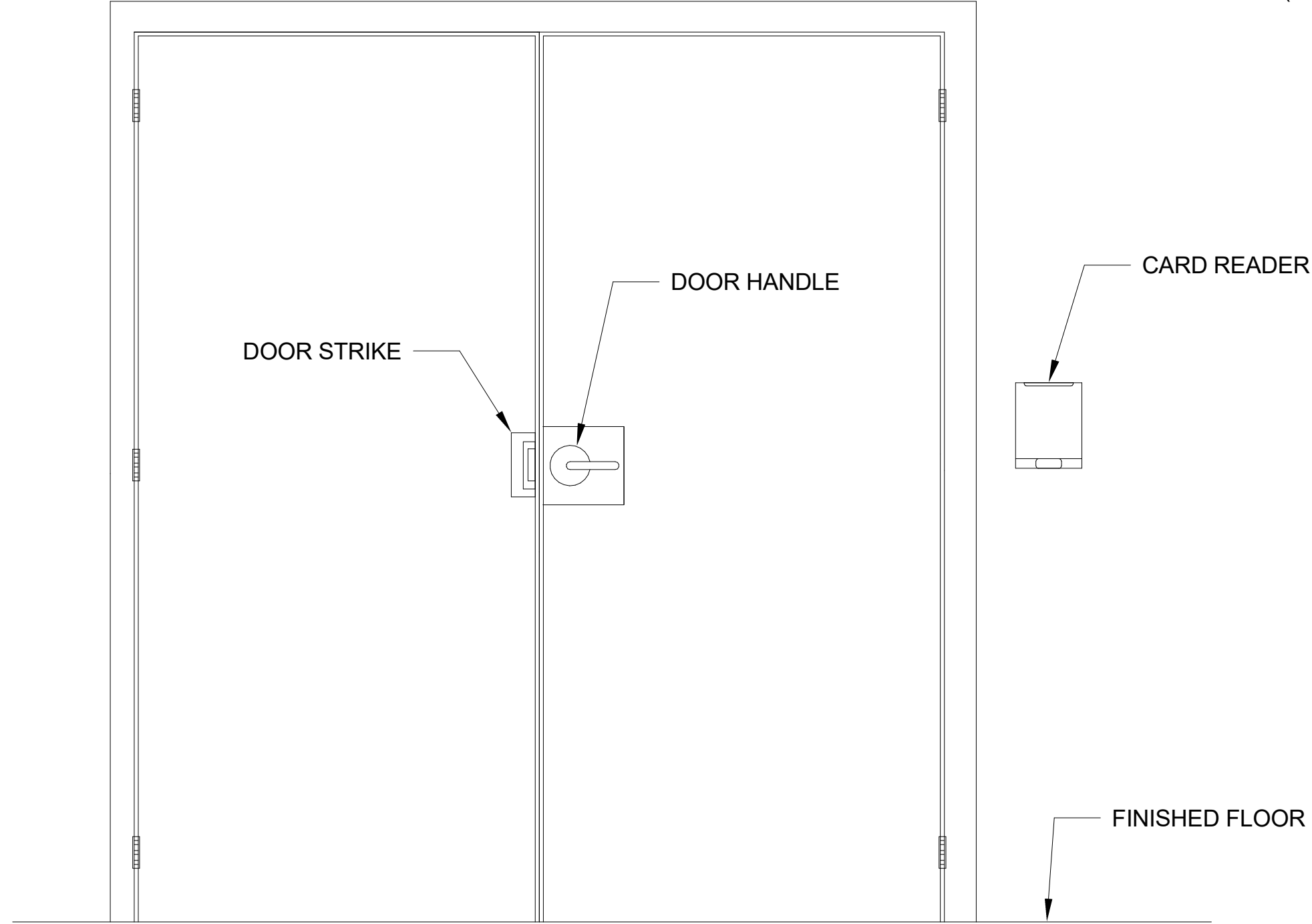
2 TYPICAL WALL MOUNT DOME IP CAMERA
T-501 N.T.S.



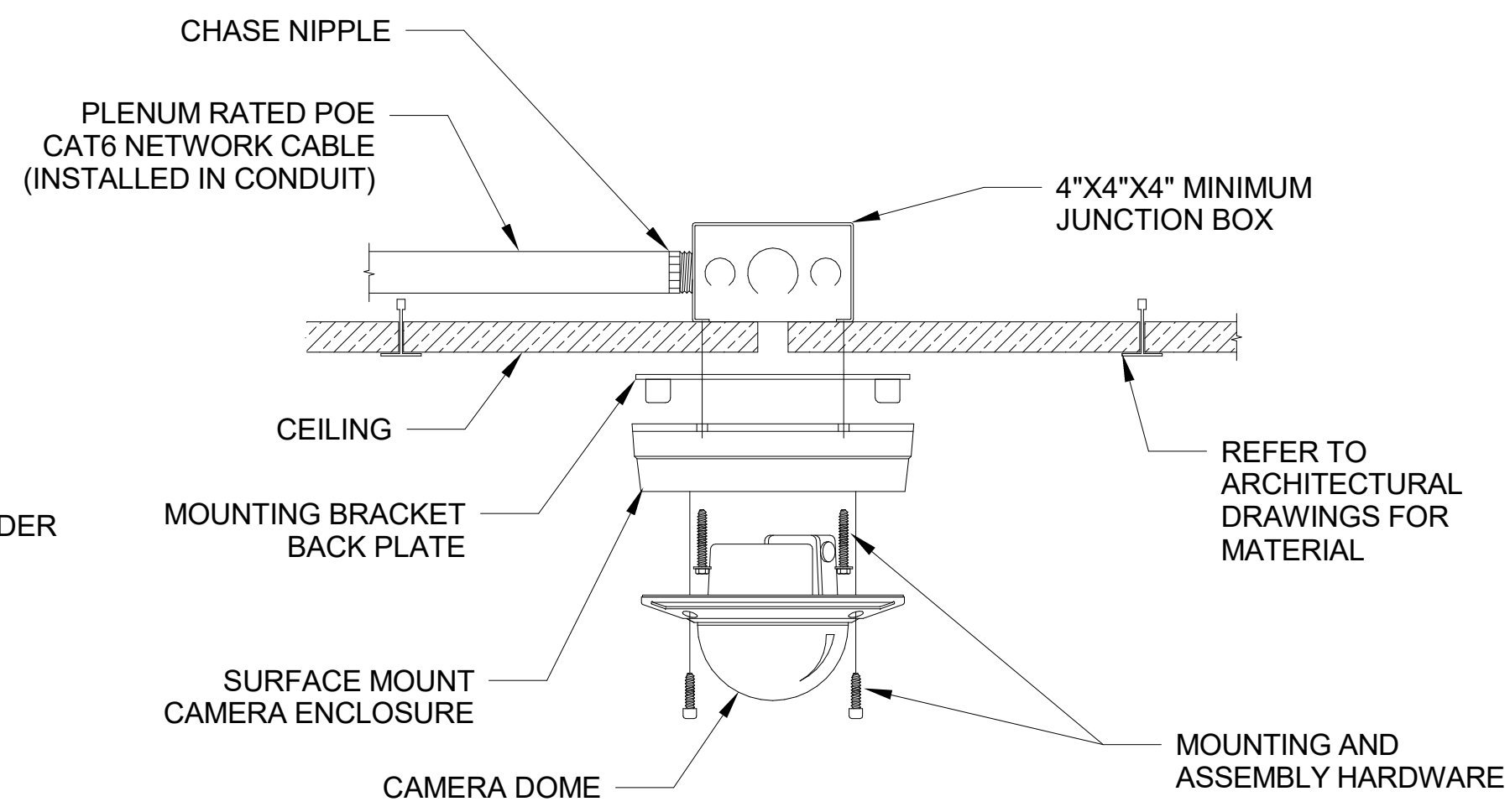
3 TYPICAL BEAM MOUNT DOME IP CAMERA
T-501 N.T.S.



4 DOUBLE DOOR PUSH BAR - SECURED SIDE (DOOR 01)
T-501 N.T.S.



5 DOUBLE DOOR PUSH BAR - UNSECURED SIDE (DOOR 01)
T-501 N.T.S.



6 TYPICAL CEILING MOUNT DOME IP CAMERA
T-501 N.T.S.