

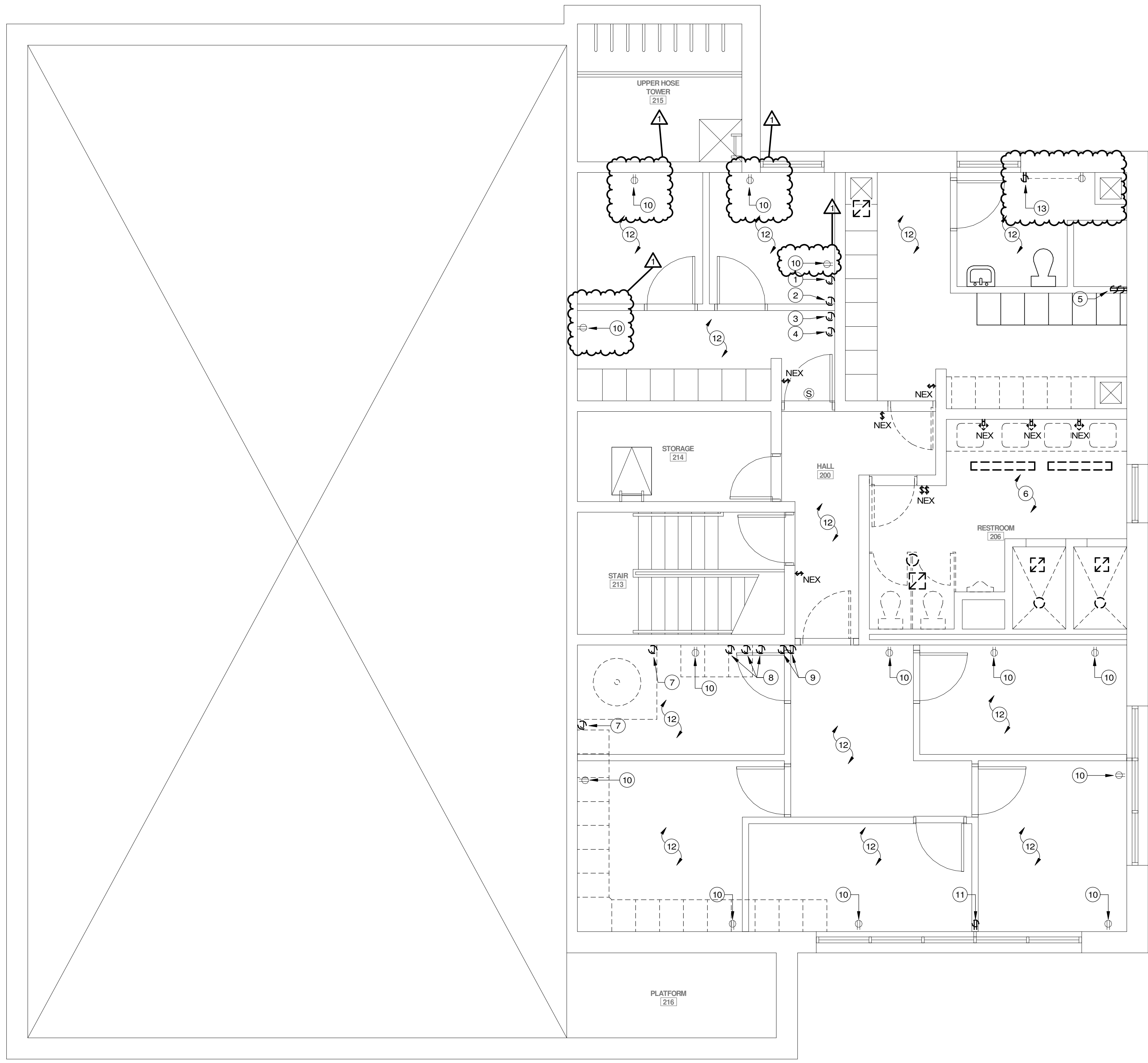
REVISIONS:
1 ADDENDUM 2

Karpinski
ENGINEERING
13714 Cleveland Ave. NW
Uniontown, OH 44685
330-699-4077
karpinskieng.com

600 MARKET AVENUE NORTH CANTON OHIO 44702

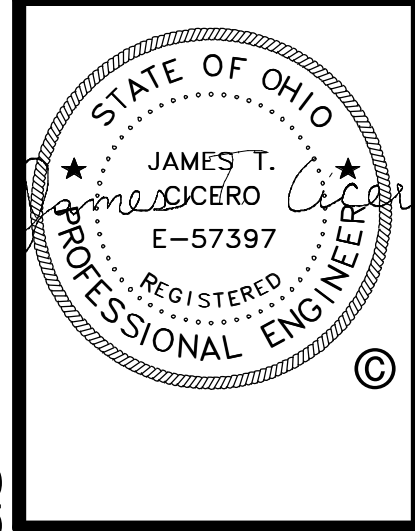
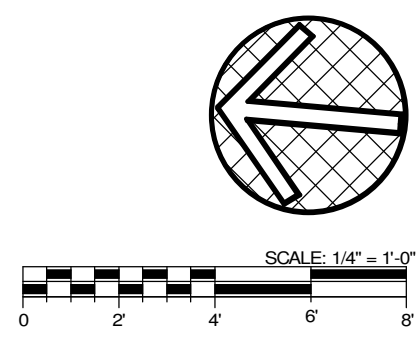
MOTTER & MEADOWS
ARCHITECTS

CITY OF CANTON
FIRE STATION NO. 8 - RENOVATION
1330 DUEBER AVE SW
CANTON, OHIO



PLAN NOTES

- 1 EXISTING NIGHTLIGHT FIXTURE: RECESSED BACKBOX AT 18" AFF TO BE REMOVED. REMOVE ALL EXISTING, ABANDONED WIRING BACK TO SOURCE.
- 2 EXISTING 8"x10" RECESSED BACKBOX AT 72" AFF. REMOVE EXISTING, ABANDONED CONDUCTORS AND PROVIDE BLANK COVER.
- 3 EXISTING 2-GANG, RECESSED BACKBOX AT 70" AFF. PROVIDE BLANK COVERPLATE.
- 4 EXISTING 1-GANG, RECESSED BACKBOX AT 70" AFF. PROVIDE BLANK COVERPLATE.
- 5 REMOVE EXISTING QUAD RECEPTACLE AND PORTION OF BRANCH CIRCUIT BACK TO NEXT UPSTREAM DEVICE.
- 6 ALL LUMINAIRES, LOCAL LIGHTING CONTROL DEVICES AND EXHAUST FANS SHALL BE REMOVED IN THIS AREA. MAINTAIN EXISTING BRANCH CIRCUIT WIRING FOR RECONNECTION TO NEW.
- 7 EXISTING NIGHT LIGHT RECESSED BACKBOX AT 18" AFF TO BE REMOVED. REMOVE ALL EXISTING, ABANDONED WIRING BACK TO SOURCE.
- 8 EXISTING COMMUNICATIONS RECESSED BACKBOX AT 75" AFF TO BE REMOVED. REMOVE ALL EXISTING, ABANDONED WIRING BACK TO SOURCE.
- 9 EXISTING RECESSED BACKBOX AT 50" AFF TO BE REMOVED. REMOVE ALL EXISTING, ABANDONED WIRING BACK TO SOURCE.
- 10 EXISTING RECEPTACLE BACKBOX. PROVIDE BOX EXTENSION RING TO ACCOMMODATE NEW WALL CONSTRUCTION. PROVIDE NEW DUPLEX RECEPTACLE AND COVERPLATE.
- 11 EXISTING RECEPTACLE BACKBOX. REMOVE DEVICE AND ASSOCIATED BRANCH CIRCUIT WIRING BACK TO NEAREST UPSTREAM DEVICE TO ACCOMMODATE NEW WALL CONSTRUCTION.
- 12 ALL LUMINAIRES AND LOCAL LIGHTING CONTROL DEVICES IN THIS AREA SHALL BE REMOVED BY OWNER. MAINTAIN EXISTING BRANCH CIRCUIT WIRING FOR RECONNECTION TO NEW.
- 13 EXISTING SURFACE MOUNTED DUPLEX RECEPTACLE AND ASSOCIATED BRANCH CIRCUIT WIRING SHALL BE REMOVED BACK TO UPSTREAM DEVICE LOCATED ON SAME WALL.



THIS DWG :
SECOND FLOOR
ELECTRICAL
DEMOLITION
PLAN

COMM 22155
DATE 07-17-23

DWG
ED-2

CONSTRUCTION DRAWINGS