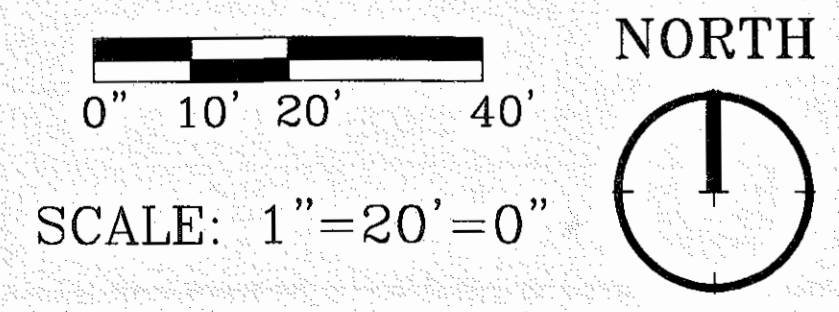
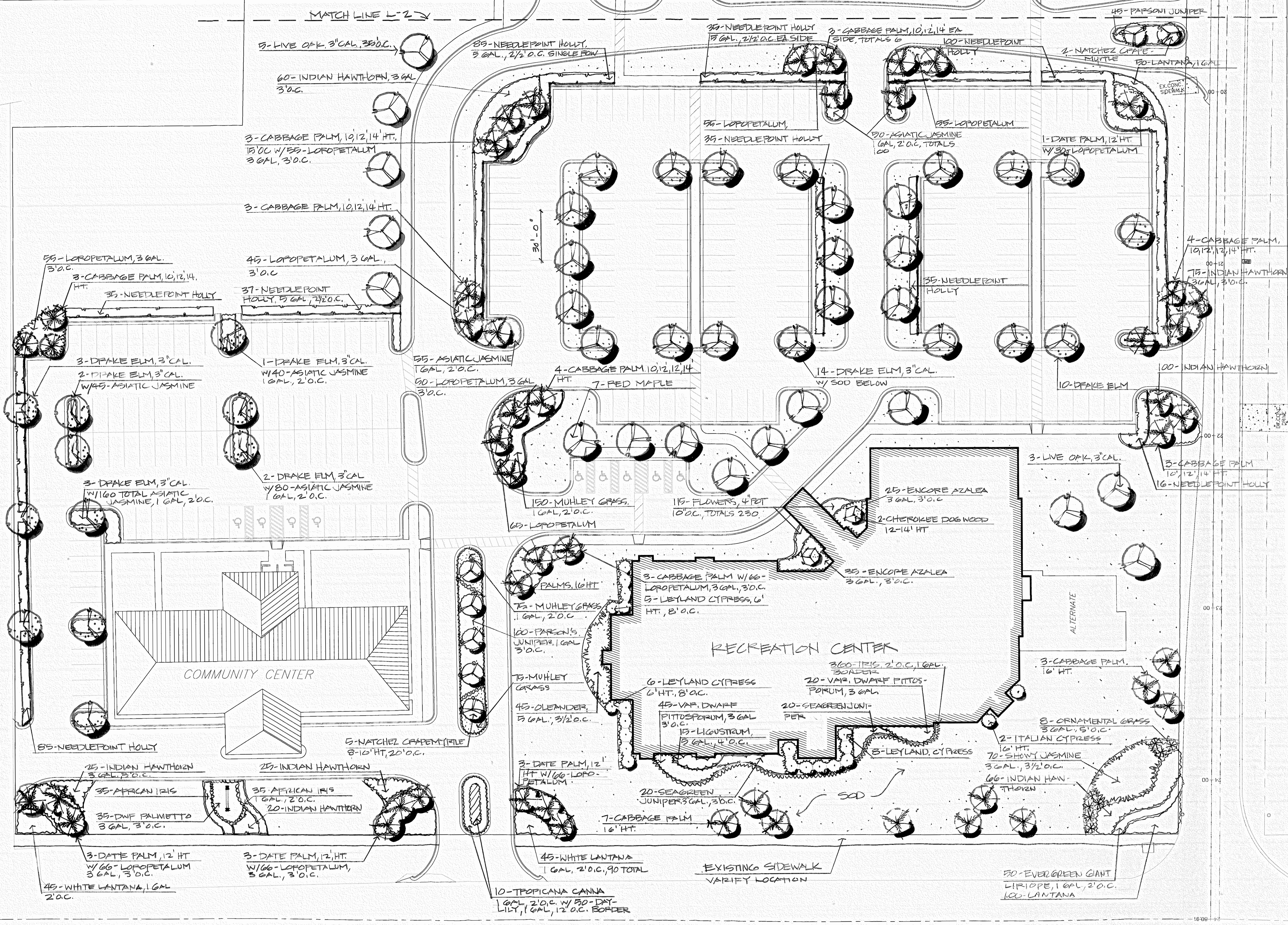


SNELL PARK

ORANGE BEACH, ALABAMA

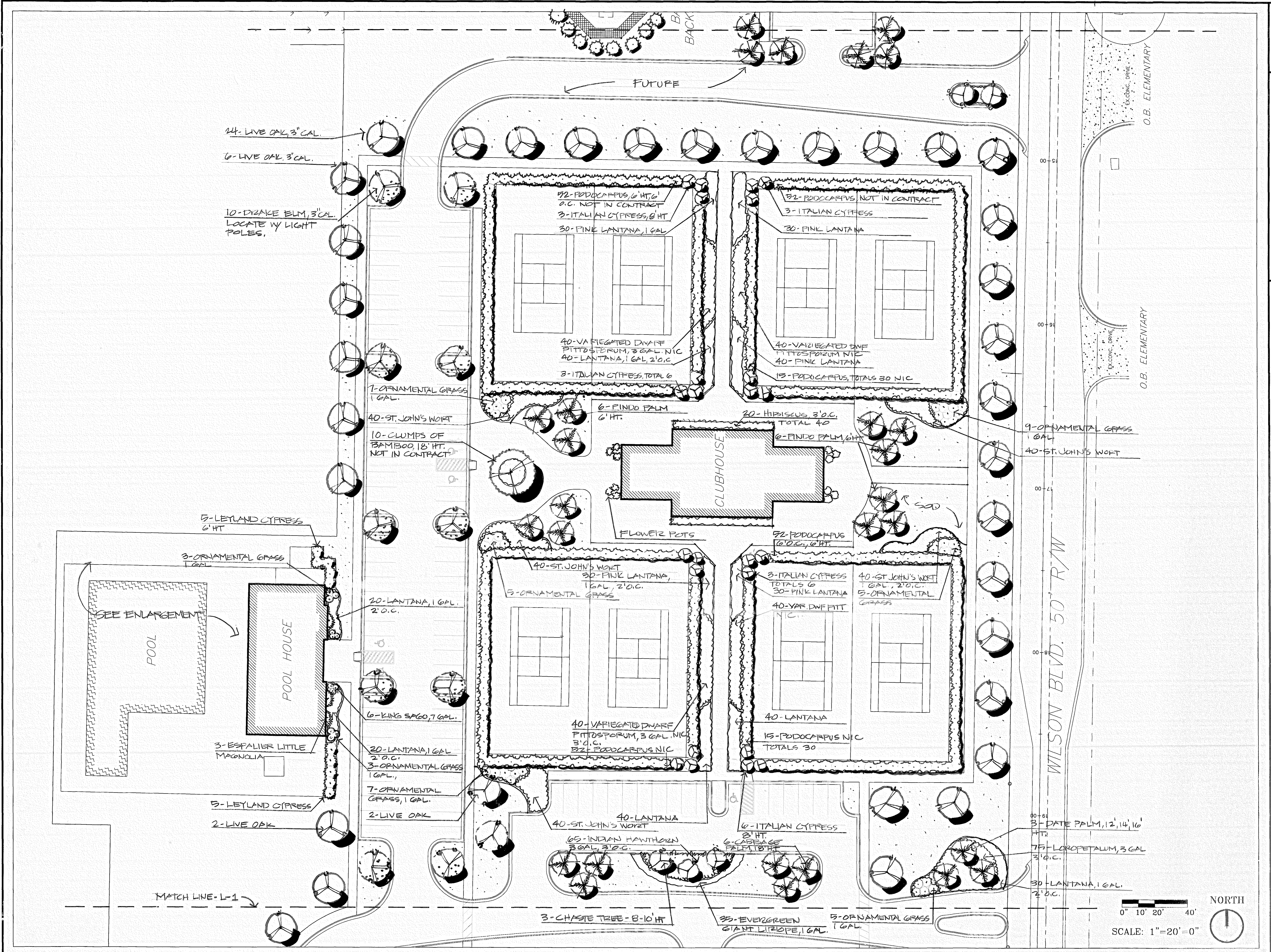
W3



STATE HIGHWAY NO. 180 100' R/W

SNELL PARK

ORANGE BEACH, ALABAMA



24- LIVE OAK, 3" CAL.

6- LIVE OAK, 3" CAL.

10- DIZALE ELM, 3" CAL.
LOCATE WY LIGHT
POLES.

92- PODOCARPUS, 6 HT,
2' C. NOT IN CONTRACT
3- ITALIAN CYPRESS, 8 HT
30- PINK LANTANA, 1 GAL

92- PODOCARPUS NOT IN CONTRACT
3- ITALIAN CYPRESS
30- PINK LANTANA

40- VARIEGATED DWARF
PITTOSPORUM, 3 GAL, NIC
40- LANTANA, 1 GAL, 2' O.C.
3- ITALIAN CYPRESS, TOTAL 6

40- VARIEGATED DWARF
PITTOSPORUM NIC
40- PINK LANTANA
15- PODOCARPUS, TOTALS 30 NIC

1- ORNAMENTAL GRASS
1 GAL.

40- ST. JOHN'S WORT

10- CLUMPS OF
BAMBOO, 18' HT.
NOT IN CONTRACT

6- PINDO PALM
6' HT.

20- HIBISCUS, 3' O.C.
TOTAL 40

6- PINDO PALM, 6' HT.

9- ORNAMENTAL GRASS
1 GAL.

40- ST. JOHN'S WORT

5- LEYLAND CYPRESS
6' HT

3- ORNAMENTAL GRASS
1 GAL.

20- LANTANA, 1 GAL.
2' O.C.

40- ST. JOHN'S WORT
30- PINK LANTANA,
1 GAL, 2' O.C.
5- ORNAMENTAL GRASS

3- ITALIAN CYPRESS
TOTALS 6
30- PINK LANTANA
40- VAR. DWARF FITT
NIC.

40- ST. JOHN'S WORT
1 GAL, 2' O.C.
5- ORNAMENTAL
GRASS

3- ESPALIER LITTLE
MAGNOLIA

20- LANTANA, 1 GAL
2' O.C.
3- ORNAMENTAL GRASS
1 GAL.

7- ORNAMENTAL
GRASS, 1 GAL.

5- LEYLAND CYPRESS

2- LIVE OAK

6- KING SPAG, 7 GAL.

40- VARIEGATED DWARF
PITTOSPORUM, 3 GAL, NIC
3' O.C.
92- PODOCARPUS NIC

40- LANTANA
15- PODOCARPUS NIC
TOTALS 30

40- LANTANA
40- ST. JOHN'S WORT

6- ITALIAN CYPRESS
3' HT.

65- INDIAN HAWTHORN
3 GAL, 3' O.C.

6- CABERAGE
PALM, 18' HT

3- DATE PALM, 12', 14', 16'

75- FLOROPETALUM, 3 GAL
3' O.C.

MATCH LINE - L-1

3- CHASTE TREE - 8-10' HT

35- EVERGREEN
GIANT LIRIOPE, 1 GAL.

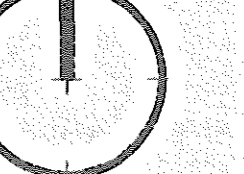
30- LANTANA, 1 GAL.
2' O.C.

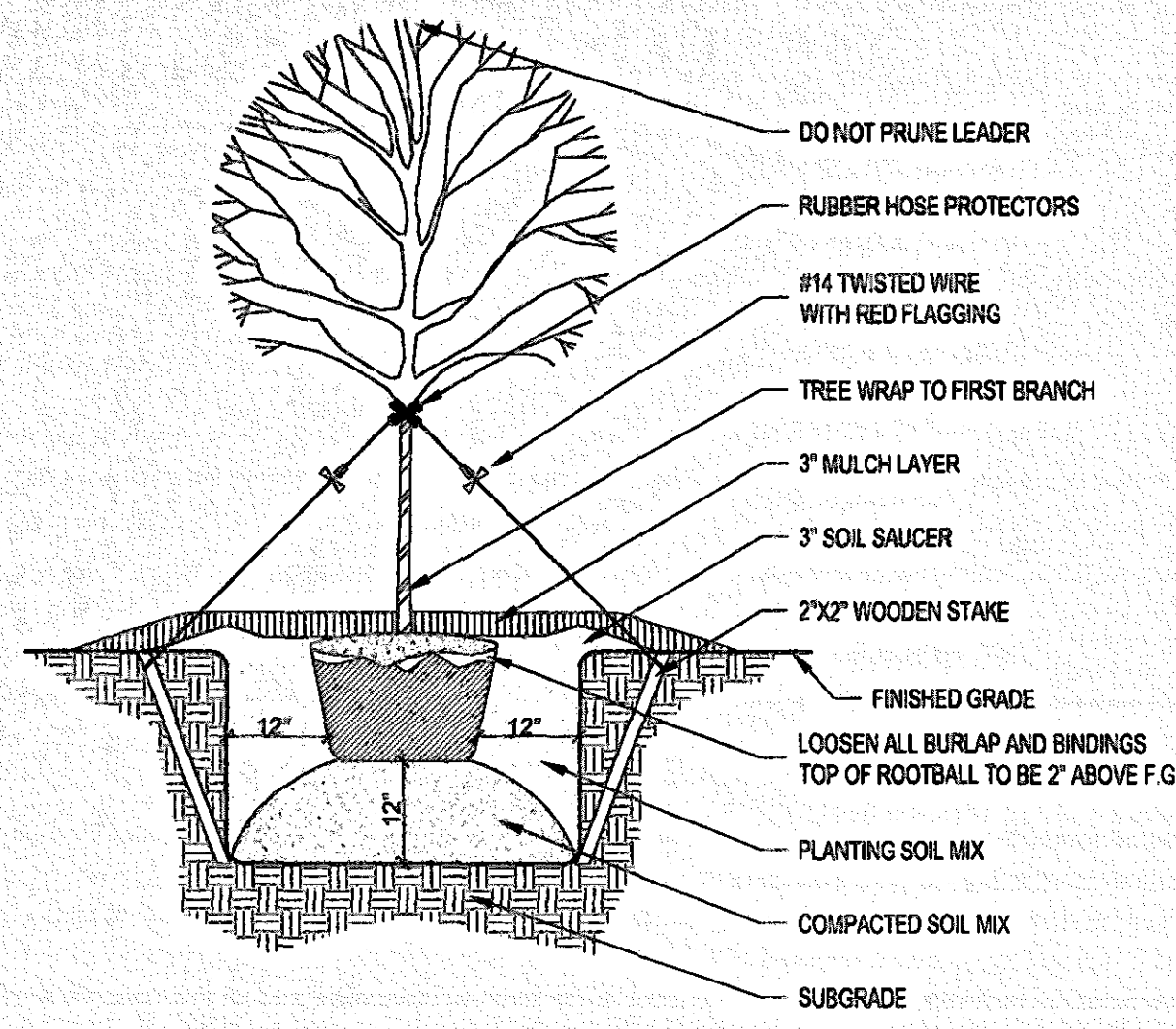
5- ORNAMENTAL GRASS
1 GAL.

0" 10' 20' 40'

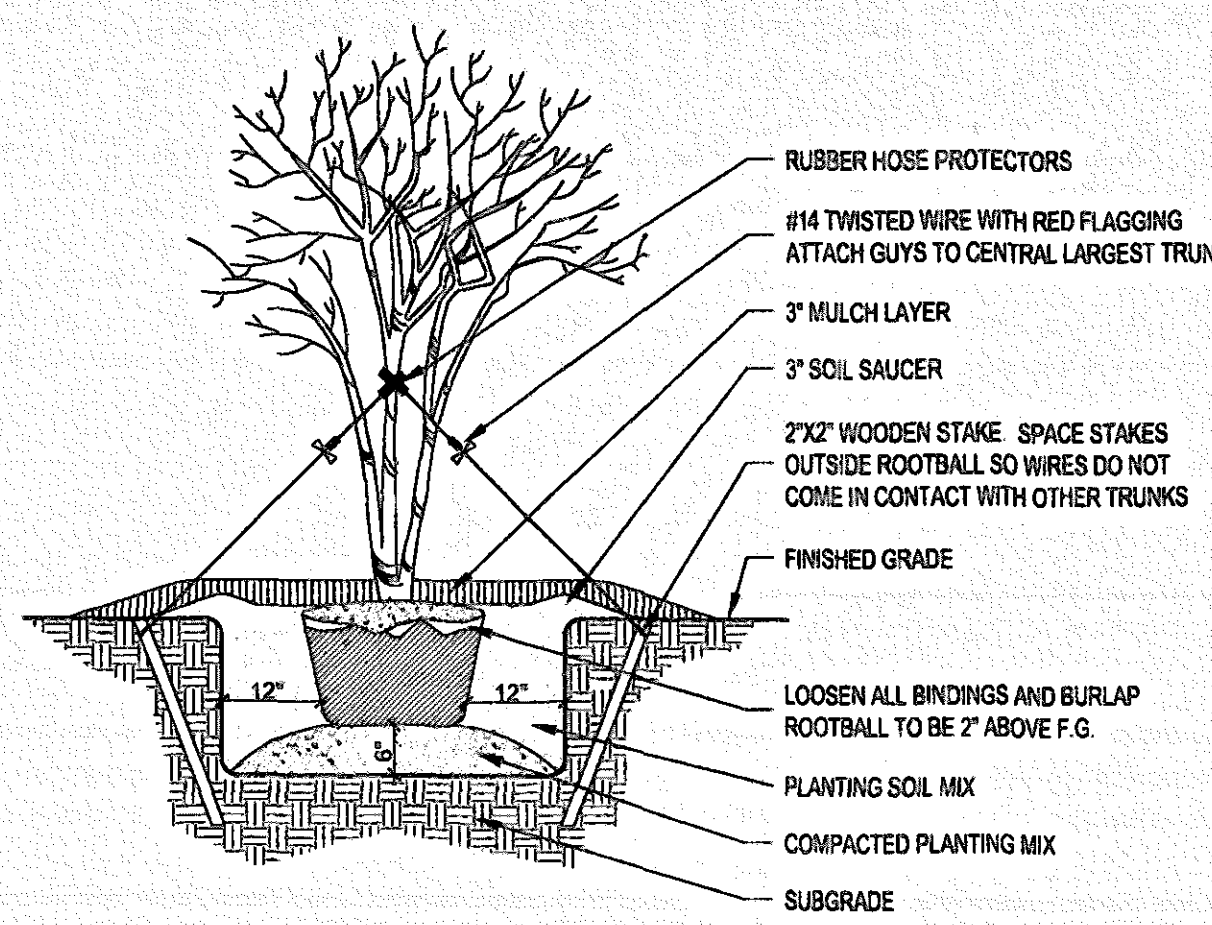
SCALE: 1" = 20' = 0"

NORTH

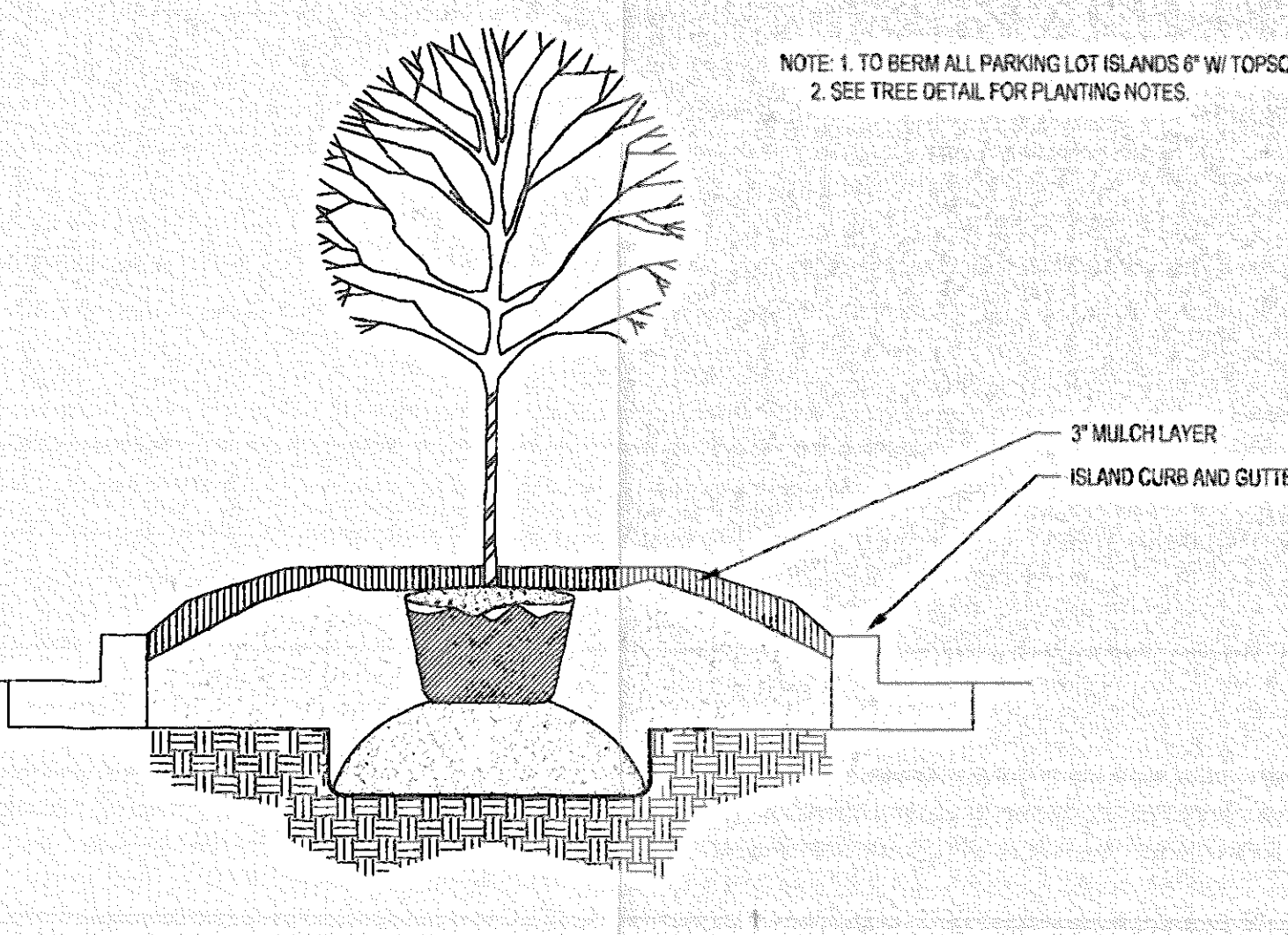




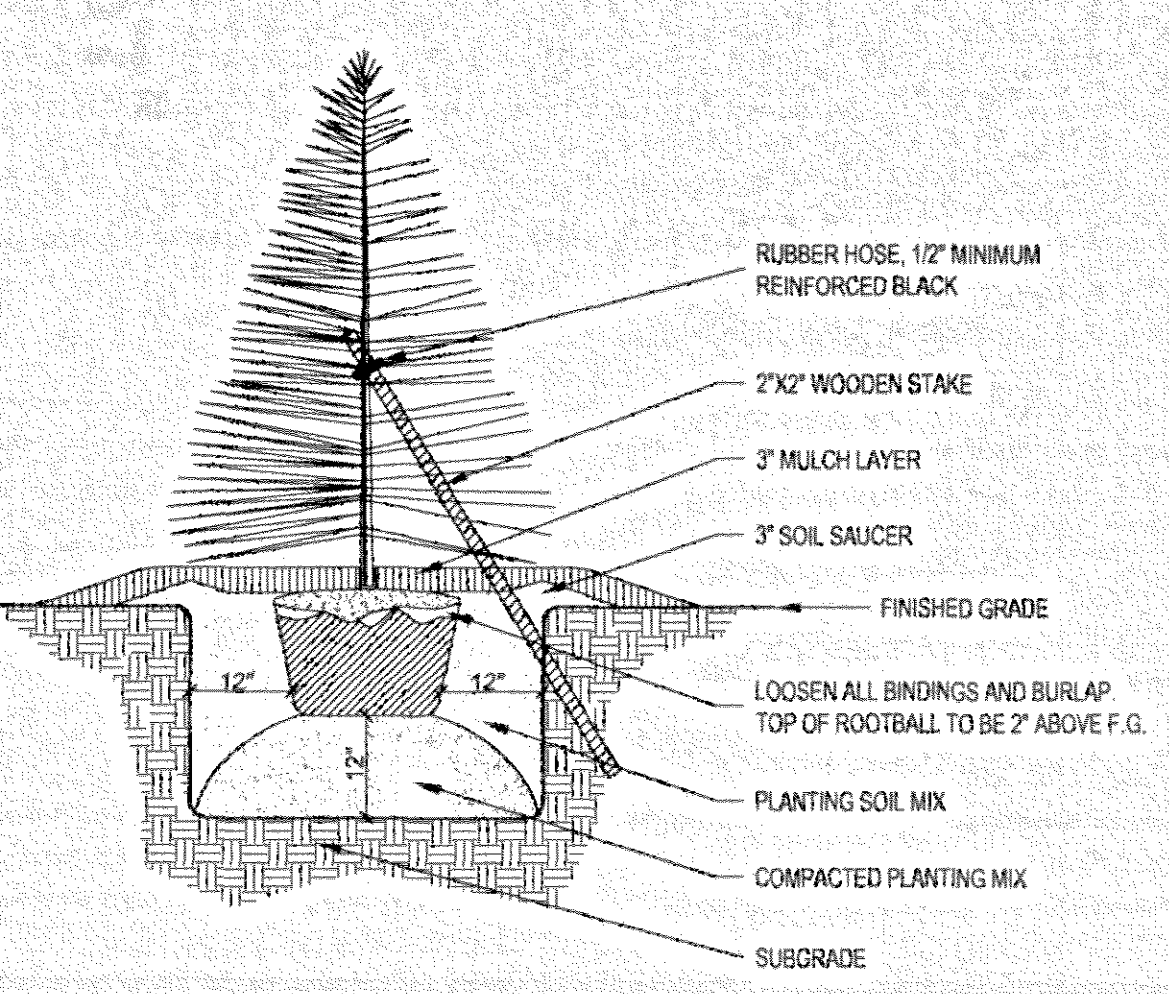
SHADE TREE PLANTING
N.T.S.



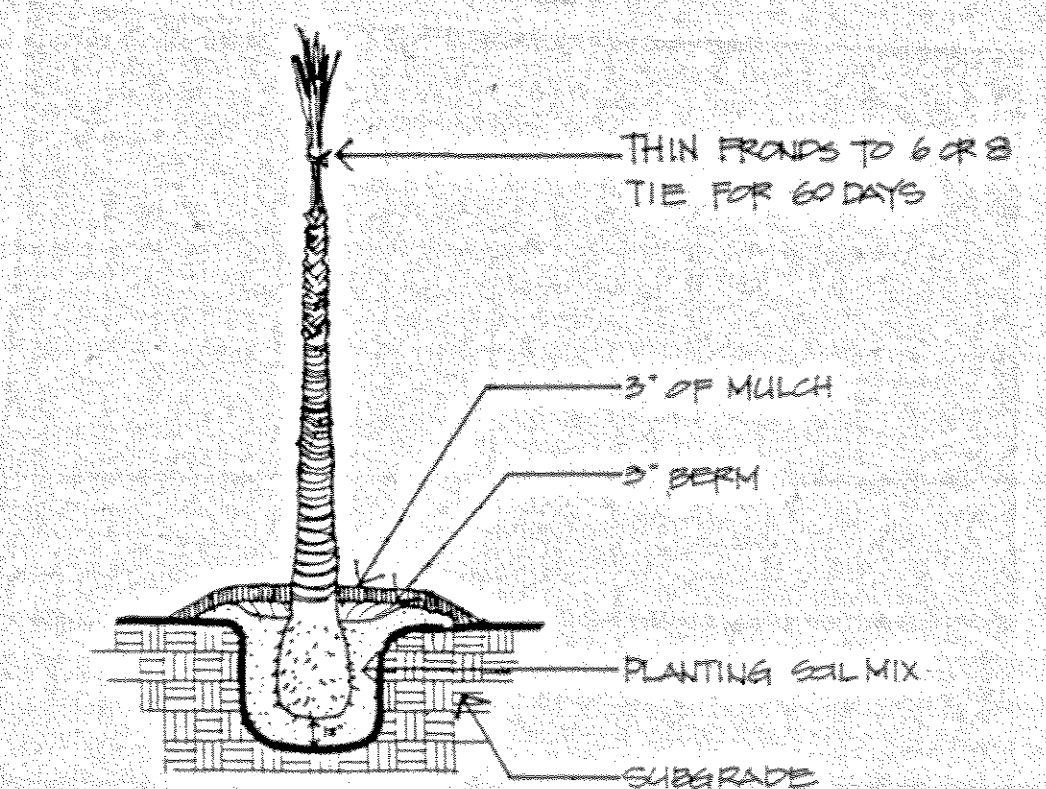
MULTI-TRUNK TREE PLANTING
N.T.S.



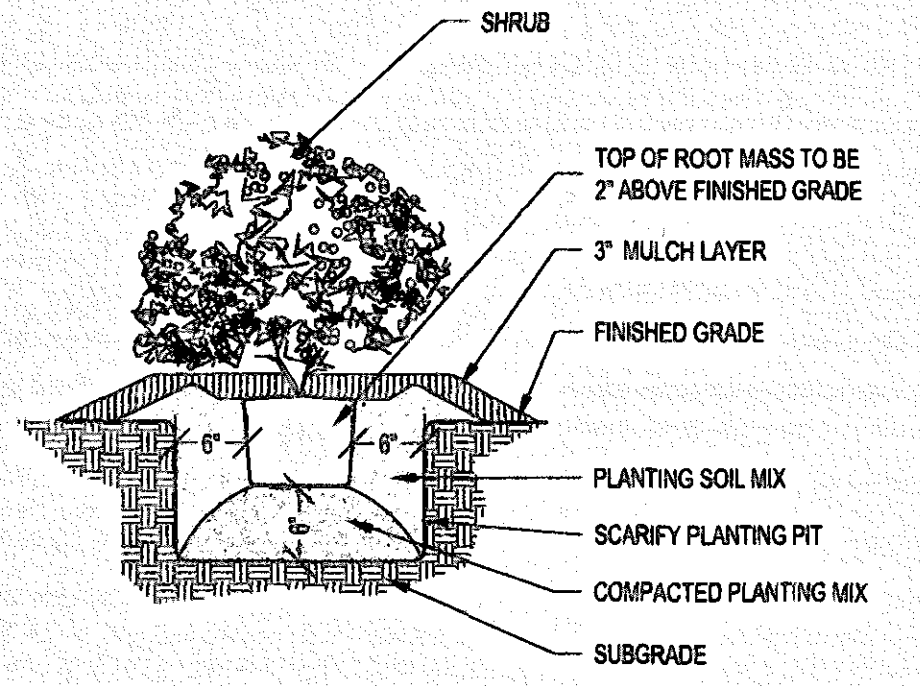
ISLAND TREE PLANTING
N.T.S.



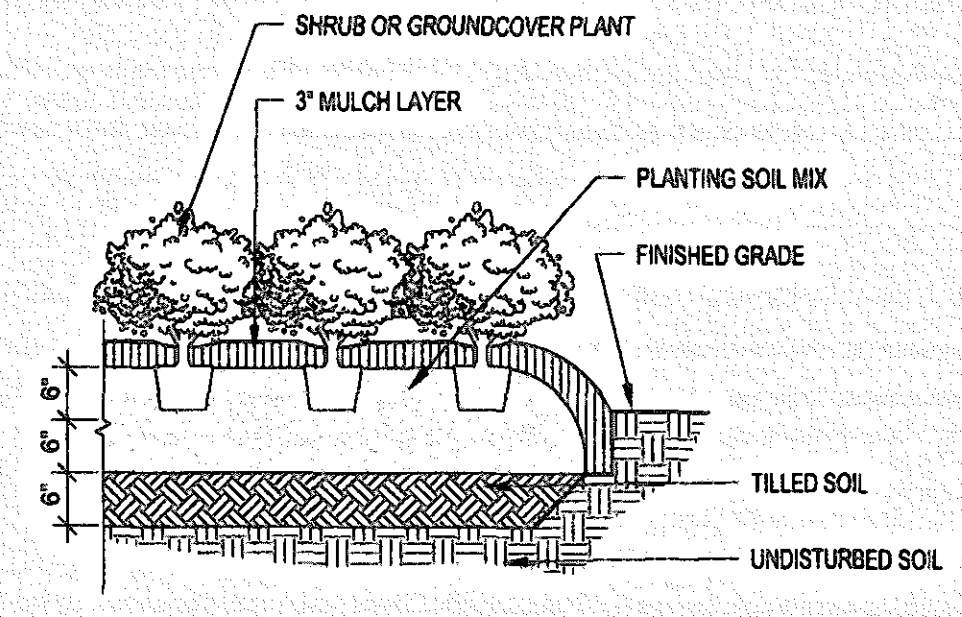
EVERGREEN TREE PLANTING
N.T.S.



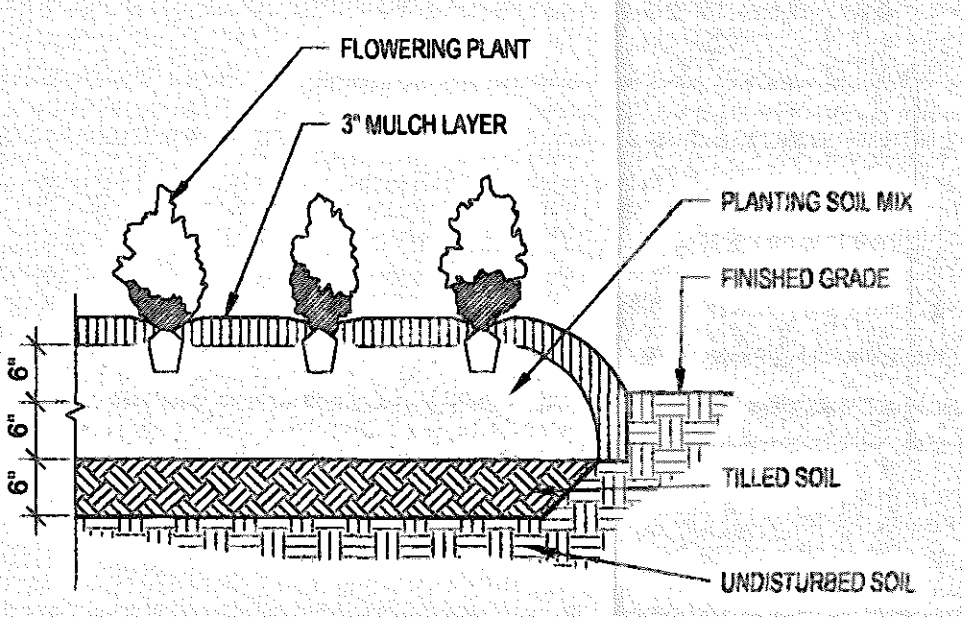
PALM TREE PLANTING
N.T.S.



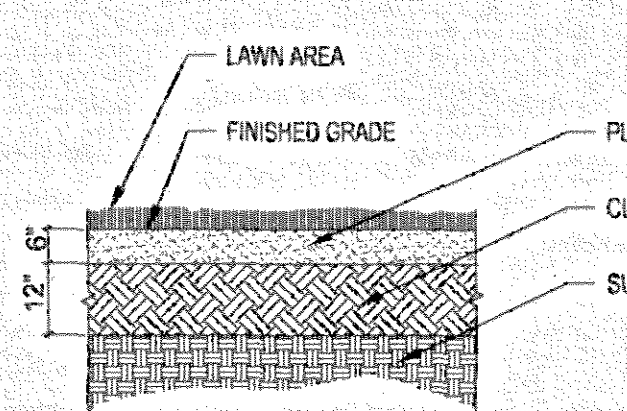
SHRUB PLANTING
N.T.S.



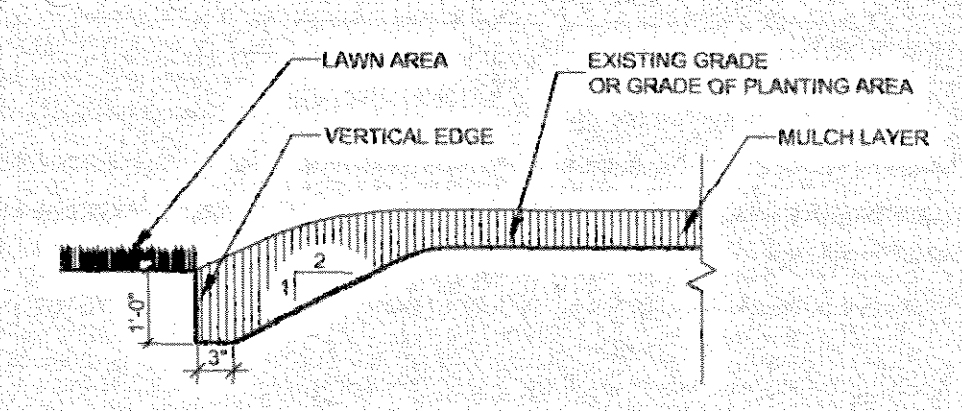
SHRUB AND GROUNDCOVER PLANTING
N.T.S.



SEASONAL COLOR PLANTING
N.T.S.



SOD INSTALLATION
N.T.S.



TRENCH EDGE
N.T.S.

PLANT LIST

TREES							
QTY	COMMON NAME	BOTANICAL NAME	CALIPER	HEIGHT	SPREAD	ROOT	NOTES
6	Cabbage Palm	Sabal palmetto	18"	9'	6'	Bare	Straight trunk and full head
13	Cabbage Palm	Sabal palmetto	16"	6'	6'	Bare	Straight trunk and full head
8	Cabbage Palm	Sabal palmetto	14"	7'	6'	Bare	Straight trunk and full head
10	Cabbage Palm	Sabal palmetto	12"	6'	6'	Bare	Straight trunk and full head
8	Cabbage Palm	Sabal palmetto	10"	5'	6'	Bare	Straight trunk and full head
3	Charlie Tree	Wrightia speciosa	8-10"	4-5'	6-8"	B&B	Straight trunk and full head
2	Cherokee Chief Dogwood	Cornus florida 'Cherokee Chief'	12-14"	6-7'	6-8"	B&B	Straight trunk and full head
7	Crape Myrtle	Lagerstroemia indica 'Natchez'	1"	8-10'	4-5'	B&B	Min. three canes, 1" each
1	Date Palm	Phoenix dactylifera 'Medjool'	18"	10'	6"	Bare	Straight trunk and full head
1	Date Palm	Phoenix dactylifera 'Medjool'	14"	6'	6"	Bare	Straight trunk and full head
11	Date Palm	Phoenix dactylifera 'Medjool'	12"	6'	6"	Bare	Straight trunk and full head
45	Drake Elm	Ulmus parviflora 'Drake'	3"	12-14'	6-7'	B&B	Straight trunk and full head
3	Esquire 'Little Gem' Magnolia	Magnolia grandiflora 'Little Gem'	6"	3'	3"	B&B	Straight trunk and full head
2	Italian Cypress	Cupressus sempervirens	16"	6'	6"	B&B	Straight and full to the ground
24	Italian Cypress	Cupressus sempervirens	6"	3'	6"	B&B	Straight and full to the ground
29	Leyland Cypress	Cupressus leylandii	6"	3'	6"	Cont.	Straight and full to the ground
42	Live Oak	Quercus virginiana	3"	12-14'	6-7'	B&B	Straight trunk and full head
12	Photo Palm	Borlae capitata	6"	3'	6"	Bare	Straight trunk and full head
208	Podocarpus	Podocarpus macrophyllus	6"	2-3'	6-8"	B&B	Straight and full to the ground
7	Red Maple	Acer rubrum	3"	12-14'	6-7'	B&B	Straight trunk and full head
SHRUBS AND GROUNDCOVERS							
QTY	COMMON NAME	BOTANICAL NAME	CALIPER	HEIGHT	SPREAD	ROOT	NOTES
430	African Iris	Iris sibirica	12"-15"	12"-15"	1 Gal.	Vigorous and full w/ no tip burn	
480	Asiatic Jasmine	Trachelospermum asiaticum	12"-15"	12"-15"	1 Gal.	Vigorous and full	
35	Dwarf Palmetto Palm	Sabal minor	15"-18"	15"-18"	3 Gal.	Vigorous and full	
90	Encore Azalea	Azalea s. 'Encore'	15"-18"	15"-18"	3 Gal.	Vigorous and full	
85	Evergreen Giant Linopse	Liriodendron 'Evergreen Giant'	12"-15"	12"-15"	1 Gal.	Vigorous and full	
53	Fatsia	Fatsia japonica	15"-18"	15"-18"	3 Gal.	Vigorous and full	
40	Hibiscus	Hibiscus rosa-sinensis	12"-15"	12"-15"	1 Gal.	Vigorous and full	
55	Hives Hairy Pittosporum	Pittosporum tobira 'Hives's Dwarf'	15"-18"	15"-18"	3 Gal.	Vigorous and full	
435	Indian Hawthorn	Rhodaphys indica 'Indian Princess'	15"-18"	15"-18"	3 Gal.	Vigorous and full	
6	King Sago	Cycas revoluta	36"	36"	7 Gal.	Vigorous and full	
15	Ligustrum	Ligustrum japonica	18"-24"	18"-24"	6 Gal.	Vigorous and full	
740	Loropetalum	Loropetalum chinense	15"-18"	15"-18"	3 Gal.	Vigorous and full	
300	Muhly Grass	Muhlenbergia capillaris	12"-15"	12"-15"	1 Gal.	Vigorous and full w/ no tip burn	
480	Needlepoint Holly	Ilex cornuta 'Needlepoint'	18"-24"	18"-24"	6 Gal.	Vigorous and full	
45	Oleander	Nerium oleander	18"-24"	18"-24"	6 Gal.	Vigorous and full w/ no tip burn	
52	Ornamental Grass	Juniperus chinensis 'Pillar'	15"-18"	15"-18"	6 Gal.	Vigorous and full w/ no tip burn	
145	Panacea Juniper	Juniperus chinensis 'Panacea'	12"-15"	12"-15"	1 Gal.	Vigorous and full	
280	Pink Lantana	Lantana camara 'New Gold'	12"-15"	12"-15"	1 Gal.	Vigorous and full	
40	Sea Green	Juniperus chinensis 'Sea Green'	15"-18"	15"-18"	3 Gal.	Vigorous and full	
230	Seasonal Color	Juniperus chinensis	15"-18"	15"-18"	47 Gal.	Vigorous and full	
70	Showy Jasmine	Jasminum flodum	15"-18"	15"-18"	3 Gal.	Vigorous and full	
200	St. Johns Wort	Hypericum perforatum	12"-15"	12"-15"	1 Gal.	Vigorous and full	
10	Tropicana Lily	Canis generalis 'Tropicana'	12"-15"	12"-15"	1 Gal.	Vigorous and full w/ no tip burn	
355	White Lantana	Lantana camara 'Silver Mound'	12"-15"	12"-15"	1 Gal.	Vigorous and full	

SEAL

605-37th Street, South
Birmingham, Alabama
35222-2357
352-236-6363
205-322-6363
Land Planning
Urban Design
FAX 205-328-2357

siteworks
Landscape Architects
and Planners
Urban Design

SNELL PARK
ORANGE BEACH, ALABAMA

Job No: 02-005

Title:
LANDSCAPE
DETAILS

Date:
3-18-02

REV 4-1-02

Drn: LHS Chkd:

Drawing No.
L-4

**POOL COMPLEX
SNELL PARK**

SITE WORKS, INC.
251-979-5756
SCALE: 1"=10'-0"
DATE: APRIL 1, 2002

