

Targeted Streets for Fiscal Year 2021-2022

|                       |                         |
|-----------------------|-------------------------|
| General Asphalt, Inc. | Star Paving Corporation |
|-----------------------|-------------------------|

| <u>Address</u>  |                      |                      |
|---|----------------------|----------------------|
| Hope Ave. from SW 183rd Street to Wayne Ave.            | \$ 17,740.60         | \$ 24,749.50         |
| East Hibiscus from S. Dixie Highway to Franjo Road      | \$ 33,594.50         | \$ 29,970.00         |
| SW 163rd Street from SW 77th Ave. to SW 74th Ave.       | \$ 37,832.45         | \$ 37,240.00         |
| SW 74th Ave. from SW 162nd Street to N. Cul de Sac      | \$ 13,851.70         | \$ 18,052.00         |
| SW 137th Street from 73rd Ave. to SW 72nd. Ave.         | \$ 18,822.60         | \$ 20,962.00         |
| SW 169th Street from S. Dixie Hwy to SW 92nd. Court     | \$ 42,232.60         | \$ 45,706.00         |
| SW 94th Court from SW 170th St. to 168th St.            | \$ 48,925.80         | \$ 44,677.50         |
| SW 170th Lane from SW 94th Ave. to Cul de Sac           | \$ 18,190.30         | \$ 19,107.00         |
| SW 165th Street from SW 93rd. Avenue to SW 92nd. Avenue | \$ 20,951.15         | \$ 20,642.50         |
| SW 94th Avenue from 170th St. to SW 168th St.           | \$ 18,558.30         | \$ 23,124.00         |
| <b>Bid Total</b>  | <b>\$ 270,700.00</b> | <b>\$ 284,230.50</b> |

BID FORM 01 OF 10

LOCATION: HOPE AVENUE FROM SW 183RD Street to WAYNE AVENUE - APPROX 1,467 SQ YDS

| BID ITEM NO. | DESCRIPTION   | UNIT        | QUANTITY | UNIT PRICE         | TOTAL COST           |
|--------------|---|-------------|----------|--------------------|----------------------|
| MSR-1        | 5' WIDE CONCRETE SIDEWALKS  | LF          | —        | —                  | —                    |
| MSR-2        | ASPHALT CONCRETE (TYPE 1" THICK)  | TON         | 80       | 118. <sup>00</sup> | 9,440. <sup>00</sup> |
| MSR-3        | MILLING EXISTING PAVEMENT (1") PAYMENT WITH GREATER CUTS WILL BE PAID PROPORTIONALLY  | SQ YDS      | 1,467    | 2. <sup>20</sup>   | 3,227. <sup>40</sup> |
| MSR-4        | ADJUST MANHOLE (THIS ITEM IS CONTINGENT UPON FIELD CONDITIONS AND MAY BE INCREASED, DECREASED OR ELIMINATED BY ENGINEER)                  | EACH        | 3        | 605. <sup>00</sup> | 1,815. <sup>00</sup> |
| MSR-5        | ADJUST EXISTING VALVE BOXES (THIS ITEM IS CONTINGENT UPON FIELD CONDITIONS AND MAY BE INCREASED, DECREASED OR ELIMINATED BY THE ENGINEER) | EACH        | 2        | 522. <sup>50</sup> | 1,045. <sup>00</sup> |
| MSR-6        | REFLECTIVE PAVEMENT MARKERS (CLASS B: MONO OR BI-DIRECTIONAL, ALL COLORS)   | EACH        | 5        | 4. <sup>00</sup>   | 20. <sup>00</sup>    |
| MSR-9        | TEMPORARY PAVEMENT MARKING (WHITE/YELLOW:SOLID; 6")   | LINEAR FOOT | 100      | .40                | 40. <sup>00</sup>    |
| MSR-10       | YELLOW, SOLID; 6"   | LINEAR FOOT | 100      | .95                | 95. <sup>00</sup>    |
| MSR-13       | TEMPORARY PAVEMENT MARKING (WHITE:SOLID; 12")   | LINEAR FOOT | —        | —                  | —                    |
| MSR-14       | THERMOPLASTIC (WHITE:SOLID; 12")  | LINEAR FOOT | —        | —                  | —                    |
| MSR-17       | TEMPORARY PAVEMENT MARKING (WHITE:SOLID; 24")   | LINEAR FOOT | 12       | 1.30               | 15. <sup>60</sup>    |
| MSR-18       | THERMOPLASTIC (WHITE:SOLID; 24")  | LINEAR FOOT | 12       | 3.55               | 42. <sup>60</sup>    |
| MOT          | MAINTENANCE OF TRAFFIC  | LUMP SUM    | 1        | 2,000              | 2,000. <sup>00</sup> |

TOTAL BID FOR: HOPE AVENUE FROM SW 183RD ST TO WAYNE AVENUE

\$ 17,740.<sup>60</sup>





BID FORM 02 OF 10

LOCATION: EAST HIBISCUS FROM S DIXIE HIGHWAY TO FRANJO ROAD - APPROX 2,000 SQ YDS

| BID ITEM NO. | DESCRIPTION  | UNIT        | QUANTITY | UNIT PRICE | TOTAL COST |
|--------------|--|-------------|----------|------------|------------|
| MSR-1        | 5' WIDE CONCRETE SIDEWALKS   | LF          | 237      | 45.00      | 10,665     |
| MSR-2        | ASPHALT CONCRETE (TYPE 1" THICK)   | TON         | 110      | 118.00     | 12,980     |
| MSR-3        | MILLING EXISTING PAVEMENT (1") PAYMENT WITH GREATER CUTS WILL BE PAID PROPORTIONALLY   | SQ YDS      | 2000     | 2.20       | 4,400      |
| MSR-4        | ADJUST MANHOLE (THIS ITEM IS CONTINGENT UPON FIELD CONDITIONS AND MAY BE INCREASED,<br>DECREASED OR ELIMINATED BY ENGINEER)                  | EACH        | 3        | 605.00     | 1,815      |
| MSR-5        | ADJUST EXISTING VALVE BOXES (THIS ITEM IS CONTINGENT UPON FIELD CONDITIONS AND MAY BE<br>INCREASED, DECREASED OR ELIMINATED BY THE ENGINEER) | EACH        | 3        | 522.50     | 1,567.50   |
| MSR-6        | REFLECTIVE PAVEMENT MARKERS (CLASS B: MONO OR BI-DIRECTIONAL, ALL COLORS)  | EACH        | 8        | 4.00       | 32.00      |
| MSR-9        | TEMPORARY PAVEMENT MARKING (WHITE/YELLOW:SOLID; 6")  | LINEAR FOOT | 100      | .40        | 40.00      |
| MSR-10       | YELLOW, SOLID; 6"  | LINEAR FOOT | 100      | .95        | 95.00      |
| MSR-13       | TEMPORARY PAVEMENT MARKING (WHITE:SOLID;12")   | LINEAR FOOT | -        |            |            |
| MSR-14       | THERMOPLASTIC (WHITE:SOLID; 12")   | LINEAR FOOT | -        |            |            |
| MSR-17       | TEMPORARY PAVEMENT MARKING (WHITE:SOLID; 24")  | LINEAR FOOT | -        |            |            |
| MSR-18       | THERMOPLASTIC (WHITE:SOLID; 24")   | LINEAR FOOT | -        |            |            |
| MOT          | MAINTENANCE OF TRAFFIC   | LUMP SUM    | 1        | 2000       | 2,000      |

TOTAL BID FOR: EAST HIBISCUS FROM S DIXIE HIGHWAY TO FRANJO ROAD

\$ 33,594.50

Legend

E. HIBISCUS US1 TO FRANJO

SW 14th Hwy

Palmis City Village Hall

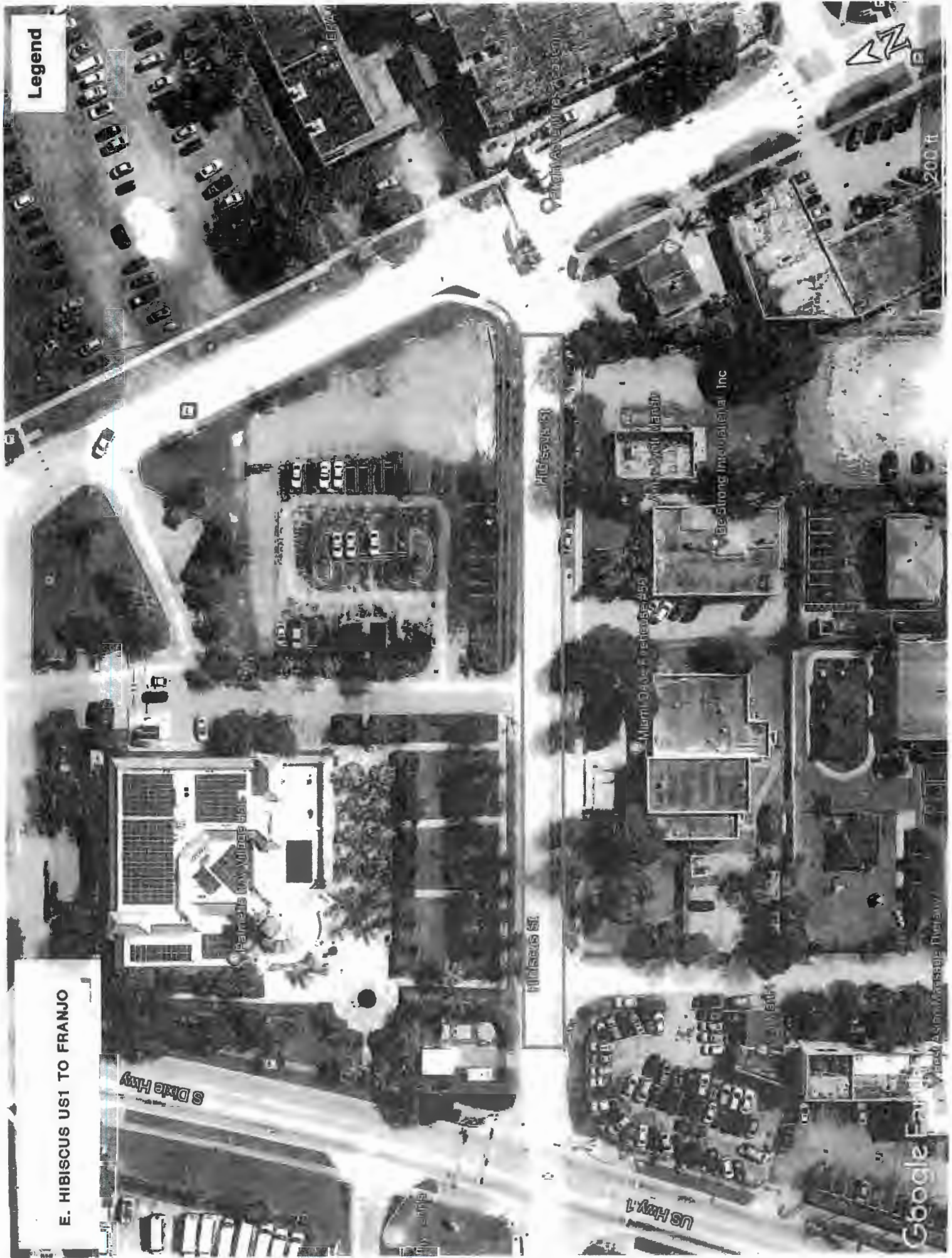
Hibiscus St

Miami City Vehicle #55

Be Strong Inc/Alstria, Inc

Google Earth  
West Ashland Bridge Parkway

200 ft



BID FORM 03 OF 10

LOCATION: SW 163RD Street From SW 77TH Avenue to SW 74TH Avenue) - APPROX 3,875 SQ YDS

| BID ITEM NO. | DESCRIPTION  | UNIT        | QUANTITY | UNIT PRICE         | TOTAL COST           |
|--------------|--|-------------|----------|--------------------|----------------------|
| MSR-1        | 5' WIDE CONCRETE SIDEWALKS   | LF          | —        |                    |                      |
| MSR-2        | ASPHALT CONCRETE (TYPE 1" THICK)   | TON         | 213      | 118. <sup>00</sup> | 25,134               |
| MSR-3        | MILLING EXISTING PAVEMENT (1") PAYMENT WITH GREATER CUTS WILL BE PAID PROPORTIONALLY   | SQ YDS      | 3875     | 2. <sup>20</sup>   | 8,525                |
| MSR-4        | ADJUST MANHOLE (THIS ITEM IS CONTINGENT UPON FIELD CONDITIONS AND MAY BE INCREASED,<br>DECREASED OR ELIMINATED BY ENGINEER)                  | EACH        | —        |                    |                      |
| MSR-5        | ADJUST EXISTING VALVE BOXES (THIS ITEM IS CONTINGENT UPON FIELD CONDITIONS AND MAY BE<br>INCREASED, DECREASED OR ELIMINATED BY THE ENGINEER) | EACH        | 3        | 522. <sup>50</sup> | 1,567. <sup>50</sup> |
| MSR-6        | REFLECTIVE PAVEMENT MARKERS (CLASS B: MONO OR BI-DIRECTIONAL, ALL COLORS)  | EACH        | 9        | 4. <sup>00</sup>   | 36. <sup>00</sup>    |
| MSR-9        | TEMPORARY PAVEMENT MARKING (WHITE/YELLOW:SOLID; 6")  | LINEAR FOOT | 200      | .40                | 80. <sup>00</sup>    |
| MSR-10       | YELLOW, SOLID; 6"  | LINEAR FOOT | 200      | .95                | 190. <sup>00</sup>   |
| MSR-13       | TEMPORARY PAVEMENT MARKING (WHITE:SOLID;12")   | LINEAR FOOT | 65       | .75                | 48. <sup>75</sup>    |
| MSR-14       | THERMOPLASTIC (WHITE:SOLID; 12")   | LINEAR FOOT | 65       | 1.85               | 120. <sup>25</sup>   |
| MSR-17       | TEMPORARY PAVEMENT MARKING (WHITE:SOLID; 24")  | LINEAR FOOT | 27       | 1.30               | 35. <sup>10</sup>    |
| MSR-18       | THERMOPLASTIC (WHITE:SOLID; 24")   | LINEAR FOOT | 27       | 3.55               | 95. <sup>85</sup>    |
| MOT          | MAINTENANCE OF TRAFFIC   | LUMP SUM    | 1        | 2,000              | 2,000                |

TOTAL BID FOR: SW 163RD Street From SW 77TH Avenue to SW 74TH Avenue

\$ 37,832.<sup>45</sup>



SW 163 ST. 77TH TO 74 AVE.

Legend



Google Earth

Data © 2008, U.S. Dept. of Commerce, NOAA, GEBCO

100 ft

BID FORM 04 OF 10

LOCATION: SW 74th Avenue From SW 162nd Street to North Cul de Sac) - APPROX 1,300 SQ YDS

| BID ITEM NO. | DESCRIPTION  | UNIT        | QUANTITY | UNIT PRICE         | TOTAL COST           |
|--------------|--|-------------|----------|--------------------|----------------------|
| MSR-1        | 5' WIDE CONCRETE SIDEWALKS   | LF          | —        |                    |                      |
| MSR-2        | ASPHALT CONCRETE (TYPE 1" THICK)   | TON         | 70       | 118. <sup>00</sup> | 8,260. <sup>00</sup> |
| MSR-3        | MILLING EXISTING PAVEMENT (1") PAYMENT WITH GREATER CUTS WILL BE PAID PROPORTIONALLY   | SQ YDS      | 1300     | 2.20               | 2,860                |
| MSR-4        | ADJUST MANHOLE (THIS ITEM IS CONTINGENT UPON FIELD CONDITIONS AND MAY BE INCREASED,<br>DECREASED OR ELIMINATED BY ENGINEER)                  | EACH        | —        |                    |                      |
| MSR-5        | ADJUST EXISTING VALVE BOXES (THIS ITEM IS CONTINGENT UPON FIELD CONDITIONS AND MAY BE<br>INCREASED, DECREASED OR ELIMINATED BY THE ENGINEER) | EACH        | 1        | 522. <sup>50</sup> | 522.50               |
| MSR-6        | REFLECTIVE PAVEMENT MARKERS (CLASS B: MONO OR BI-DIRECTIONAL, ALL COLORS)  | EACH        | 4        | 4. <sup>00</sup>   | 16. <sup>00</sup>    |
| MSR-9        | TEMPORARY PAVEMENT MARKING (WHITE/YELLOW:SOLID; 6")  | LINEAR FOOT | 100      | .40                | 40. <sup>00</sup>    |
| MSR-10       | YELLOW, SOLID; 6"  | LINEAR FOOT | 100      | .95                | 95. <sup>00</sup>    |
| MSR-13       | TEMPORARY PAVEMENT MARKING (WHITE:SOLID;12")   | LINEAR FOOT | —        |                    |                      |
| MSR-14       | THERMOPLASTIC (WHITE:SOLID; 12")   | LINEAR FOOT | —        |                    |                      |
| MSR-17       | TEMPORARY PAVEMENT MARKING (WHITE:SOLID; 24")  | LINEAR FOOT | 12       | 1.30               | 15.60                |
| MSR-18       | THERMOPLASTIC (WHITE:SOLID; 24")   | LINEAR FOOT | 12       | 3.55               | 42.60                |
| MOT          | MAINTENANCE OF TRAFFIC   | LUMP SUM    | 1        | 2,000              | 2,000. <sup>00</sup> |

TOTAL BID FOR: SW 74th Avenue From SW 162nd Street to North Cul-de-Sac

\$13,851.70



SW 74TH AVE. 162 ST TO CUL DE SAC

Legend



Google Earth

© 2021 Google

300 呎



BID FORM 05 OF 10

LOCATION: SW 137th Street From SW 73rd Avenue to SW 72ND Avenue) - APPROX 1,700 SQ YDS

| BID ITEM NO. | DESCRIPTION   | UNIT        | QUANTITY | UNIT PRICE | TOTAL COST |
|--------------|---|-------------|----------|------------|------------|
| MSR-1        | 5' WIDE CONCRETE SIDEWALKS  | LF          | 27       | 45.00      | 1,215      |
| MSR-2        | ASPHALT CONCRETE (TYPE 1" THICK)  | TON         | 93       | 118.00     | 10,974     |
| MSR-3        | MILLING EXISTING PAVEMENT (1") PAYMENT WITH GREATER CUTS WILL BE PAID PROPORTIONALLY  | SQ YDS      | 1700     | 2.20       | 3,740      |
| MSR-4        | ADJUST MANHOLE (THIS ITEM IS CONTINGENT UPON FIELD CONDITIONS AND MAY BE INCREASED, DECREASED OR ELIMINATED BY ENGINEER)                  | EACH        | —        |            |            |
| MSR-5        | ADJUST EXISTING VALVE BOXES (THIS ITEM IS CONTINGENT UPON FIELD CONDITIONS AND MAY BE INCREASED, DECREASED OR ELIMINATED BY THE ENGINEER) | EACH        | 1        | 522.50     | 522.50     |
| MSR-6        | REFLECTIVE PAVEMENT MARKERS (CLASS B: MONO OR BI-DIRECTIONAL, ALL COLORS)   | EACH        | 5        | 4.00       | 20.00      |
| MSR-9        | TEMPORARY PAVEMENT MARKING (WHITE/YELLOW:SOLID; 6")   | LINEAR FOOT | 100      | .40        | 40.00      |
| MSR-10       | YELLOW, SOLID; 6"   | LINEAR FOOT | 100      | .95        | 95.00      |
| MSR-13       | TEMPORARY PAVEMENT MARKING (WHITE:SOLID;12")  | LINEAR FOOT | 57       | .75        | 42.75      |
| MSR-14       | THERMOPLASTIC (WHITE:SOLID; 12")  | LINEAR FOOT | 57       | 1.85       | 105.45     |
| MSR-17       | TEMPORARY PAVEMENT MARKING (WHITE:SOLID; 24")   | LINEAR FOOT | 14       | 1.30       | 18.20      |
| MSR-18       | THERMOPLASTIC (WHITE:SOLID; 24")  | LINEAR FOOT | 14       | 3.55       | 49.70      |
| MOT          | MAINTENANCE OF TRAFFIC  | LUMP SUM    | 1        | 2,000      | 2,000.00   |

TOTAL BID FOR: SW 137th Street From SW 73rd Avenue to SW 72ND Avenue

\$ 18,822.60



SW 137ST FROM 73-72ND AVE.

Legend



Google Earth

© 2008 Google  
All Rights Reserved

200 ft



BID FORM 06 OF 10

LOCATION: SW 169th Street (From S Dixie Hwy to SW 92ND Court) - APPROX 4,400 SQ YDS

| BID ITEM NO. | DESCRIPTION   | UNIT        | QUANTITY | UNIT PRICE | TOTAL COST |
|--------------|---|-------------|----------|------------|------------|
| MSR-1        | 5' WIDE CONCRETE SIDEWALKS  | LF          | —        |            |            |
| MSR-2        | ASPHALT CONCRETE (TYPE 1" THICK)  | TON         | 240      | 118.00     | 28,320     |
| MSR-3        | MILLING EXISTING PAVEMENT (1") PAYMENT WITH GREATER CUTS WILL BE PAID PROPORTIONALLY  | SQ YDS      | 4,400    | 2.20       | 9,680      |
| MSR-4        | ADJUST MANHOLE (THIS ITEM IS CONTINGENT UPON FIELD CONDITIONS AND MAY BE INCREASED, DECREASED OR ELIMINATED BY ENGINEER)                  | EACH        | —        |            |            |
| MSR-5        | ADJUST EXISTING VALVE BOXES (THIS ITEM IS CONTINGENT UPON FIELD CONDITIONS AND MAY BE INCREASED, DECREASED OR ELIMINATED BY THE ENGINEER) | EACH        | 2        | 522.50     | 1,045      |
| MSR-6        | REFLECTIVE PAVEMENT MARKERS (CLASS B: MONO OR BI-DIRECTIONAL, ALL COLORS)   | EACH        | 21       | 4.00       | 84.00      |
| MSR-9        | TEMPORARY PAVEMENT MARKING (WHITE/YELLOW:SOLID; 6")   | LINEAR FOOT | 572      | .40        | 228.80     |
| MSR-10       | YELLOW, SOLID; 6"   | LINEAR FOOT | 572      | .95        | 543.40     |
| MSR-13       | TEMPORARY PAVEMENT MARKING (WHITE:SOLID;12")  | LINEAR FOOT | 23       | .75        | 17.25      |
| MSR-14       | THERMOPLASTIC (WHITE:SOLID; 12")  | LINEAR FOOT | 23       | 1.85       | 42.55      |
| MSR-17       | TEMPORARY PAVEMENT MARKING (WHITE:SOLID; 24")   | LINEAR FOOT | 56       | 1.30       | 72.80      |
| MSR-18       | THERMOPLASTIC (WHITE:SOLID; 24")  | LINEAR FOOT | 56       | 3.55       | 198.80     |
| MOT          | MAINTENANCE OF TRAFFIC  | LUMP SUM    | 1        | 2,000      | 2,000      |

TOTAL BID FOR: SW 169th Street From S Dixie Hwy to SW 92ND Court

\$ 42,232.60

SW 169 ST. FROM US1-92ND. CT.

Legend

SW 168th St

SW 168th St

SW 172th St

Google Earth

Walters Coffee Shop

© 2021 Google

500 ft



BID FORM 07 OF 10

LOCATION: SW 94th Court (From SW 170TH Street to SW 168TH Street) - APPROX 1,890 SQ YDS

| BID ITEM NO. | DESCRIPTION   | UNIT        | QUANTITY | UNIT PRICE         | TOTAL COST            |
|--------------|---|-------------|----------|--------------------|-----------------------|
| MSR-1        | 5' WIDE CONCRETE SIDEWALKS  | LF          | —        |                    |                       |
| MSR-2        | ASPHALT CONCRETE (TYPE 1" THICK)  | TON         | 250      | 118. <sup>00</sup> | 29,500. <sup>00</sup> |
| MSR-3        | MILLING EXISTING PAVEMENT (1") PAYMENT WITH GREATER CUTS WILL BE PAID PROPORTIONALLY  | SQ YDS      | 4,550    | 2.20               | 10,010. <sup>00</sup> |
| MSR-4        | ADJUST MANHOLE (THIS ITEM IS CONTINGENT UPON FIELD CONDITIONS AND MAY BE INCREASED, DECREASED OR ELIMINATED BY ENGINEER)                  | EACH        | 3        | 605. <sup>00</sup> | 1,815. <sup>00</sup>  |
| MSR-5        | ADJUST EXISTING VALVE BOXES (THIS ITEM IS CONTINGENT UPON FIELD CONDITIONS AND MAY BE INCREASED, DECREASED OR ELIMINATED BY THE ENGINEER) | EACH        | 7        | 522. <sup>50</sup> | 3,657. <sup>50</sup>  |
| MSR-6        | REFLECTIVE PAVEMENT MARKERS (CLASS B: MONO OR BI-DIRECTIONAL, ALL COLORS)   | EACH        | 29       | 4. <sup>00</sup>   | 116. <sup>00</sup>    |
| MSR-9        | TEMPORARY PAVEMENT MARKING (WHITE/YELLOW:SOLID; 6")   | LINEAR FOOT | 636      | .40                | 254. <sup>40</sup>    |
| MSR-10       | YELLOW, SOLID; 6"   | LINEAR FOOT | 636      | .95                | 604. <sup>20</sup>    |
| MSR-13       | TEMPORARY PAVEMENT MARKING (WHITE:SOLID;12")  | LINEAR FOOT | 242      | .75                | 181. <sup>50</sup>    |
| MSR-14       | THERMOPLASTIC (WHITE:SOLID; 12")  | LINEAR FOOT | 242      | 1.85               | 447. <sup>70</sup>    |
| MSR-17       | TEMPORARY PAVEMENT MARKING (WHITE:SOLID; 24")   | LINEAR FOOT | 70       | 1.30               | 91. <sup>00</sup>     |
| MSR-18       | THERMOPLASTIC (WHITE:SOLID; 24")  | LINEAR FOOT | 70       | 3.55               | 248. <sup>50</sup>    |
| MOT          | MAINTENANCE OF TRAFFIC  | LUMP SUM    | 1        | 2,000              | 2,000                 |

TOTAL BID FOR: SW 94th Court From SW 170TH Street to SW 168TH Street

\$ 48,925.<sup>80</sup>



SW 94 CT. FROM 170ST.-168ST.

Legend

SW 168th St

Marathon Gas

SW 94th Ct

SW 94th Ave

SW 94th Ct

SW 98th Ave

SW 169th St

SW 169th St

Community Auto Insurance

1

SW 94th Hwy

SW 170th St

SW 170th St

SW 170th St

SW 170th St

Call 800-NGA-4119

400 ft



BID FORM 08 OF 10

LOCATION: SW 170th Lane (From SW 94th Avenue to Cul-de-Sac) - APPROX 1,603 SQ YDS

| BID ITEM NO. | DESCRIPTION   | UNIT        | QUANTITY | UNIT PRICE | TOTAL COST |
|--------------|---|-------------|----------|------------|------------|
| MSR-1        | 5' WIDE CONCRETE SIDEWALKS  | LF          | —        |            |            |
| MSR-2        | ASPHALT CONCRETE (TYPE 1" THICK)  | TON         | 88       | 118.00     | 10,384     |
| MSR-3        | MILLING EXISTING PAVEMENT (1") PAYMENT WITH GREATER CUTS WILL BE PAID PROPORTIONALLY  | SQ YDS      | 1603     | 2.20       | 3,526.60   |
| MSR-4        | ADJUST MANHOLE (THIS ITEM IS CONTINGENT UPON FIELD CONDITIONS AND MAY BE INCREASED, DECREASED OR ELIMINATED BY ENGINEER)                  | EACH        | 3        | 605        | 1815       |
| MSR-5        | ADJUST EXISTING VALVE BOXES (THIS ITEM IS CONTINGENT UPON FIELD CONDITIONS AND MAY BE INCREASED, DECREASED OR ELIMINATED BY THE ENGINEER) | EACH        | —        | —          |            |
| MSR-6        | REFLECTIVE PAVEMENT MARKERS (CLASS B: MONO OR BI-DIRECTIONAL, ALL COLORS)   | EACH        | 5        | 4.00       | 20.00      |
| MSR-9        | TEMPORARY PAVEMENT MARKING (WHITE/YELLOW:SOLID; 6")   | LINEAR FOOT | 100      | .40        | 40.00      |
| MSR-10       | YELLOW, SOLID; 6"   | LINEAR FOOT | 100      | .95        | 95.00      |
| MSR-13       | TEMPORARY PAVEMENT MARKING (WHITE:SOLID;12")  | LINEAR FOOT | 93       | .75        | 69.75      |
| MSR-14       | THERMOPLASTIC (WHITE:SOLID; 12")  | LINEAR FOOT | 93       | 1.85       | 172.05     |
| MSR-17       | TEMPORARY PAVEMENT MARKING (WHITE:SOLID; 24")   | LINEAR FOOT | 14       | 1.30       | 18.20      |
| MSR-18       | THERMOPLASTIC (WHITE:SOLID; 24")  | LINEAR FOOT | 14       | 3.55       | 49.70      |
| MCT          | MAINTENANCE OF TRAFFIC  | LUMP SUM    | 1        | 2,000      | 2,000      |

TOTAL BID FOR: SW 170th Lane From SW 94TH Avenue to Cul de Sac

\$ 18,190.30



Legend

W 170 LANE FROM 94 AVE TO CUL DE SAC

SW 170th Ln

SW 171st Terrace

Google Earth

© 2007 Google

200 ft





BID FORM 09 OF 10

LOCATION: SW 165th Street (From SW 93rd Avenue to SW 92nd Avenue) - APPROX 1,922 SQ YDS

| BID ITEM NO. | DESCRIPTION   | UNIT        | QUANTITY | UNIT PRICE | TOTAL COST |
|--------------|---|-------------|----------|------------|------------|
| MSR-1        | 5' WIDE CONCRETE SIDEWALKS  | LF          | 35       | 45.00      | 1,575      |
| MSR-2        | ASPHALT CONCRETE (TYPE 1" THICK)  | TON         | 106      | 110.00     | 12,508     |
| MSR-3        | MILLING EXISTING PAVEMENT (1") PAYMENT WITH GREATER CUTS WILL BE PAID PROPORTIONALLY  | SQ YDS      | 1922     | 2.20       | 4,228.40   |
| MSR-4        | ADJUST MANHOLE (THIS ITEM IS CONTINGENT UPON FIELD CONDITIONS AND MAY BE INCREASED, DECREASED OR ELIMINATED BY ENGINEER)                  | EACH        | -        | -          |            |
| MSR-5        | ADJUST EXISTING VALVE BOXES (THIS ITEM IS CONTINGENT UPON FIELD CONDITIONS AND MAY BE INCREASED, DECREASED OR ELIMINATED BY THE ENGINEER) | EACH        | -        | -          |            |
| MSR-6        | REFLECTIVE PAVEMENT MARKERS (CLASS B: MONO OR BI-DIRECTIONAL, ALL COLORS)   | EACH        | 9        | 4.00       | 36.00      |
| MSR-9        | TEMPORARY PAVEMENT MARKING (WHITE/YELLOW:SOLID; 6")   | LINEAR FOOT | 200      | .40        | 80.00      |
| MSR-10       | YELLOW, SOLID; 6"   | LINEAR FOOT | 200      | .95        | 190.00     |
| MSR-13       | TEMPORARY PAVEMENT MARKING (WHITE:SOLID;12")  | LINEAR FOOT | 78       | .75        | 58.50      |
| MSR-14       | THERMOPLASTIC (WHITE:SOLID; 12")  | LINEAR FOOT | 78       | 1.85       | 144.30     |
| MSR-17       | TEMPORARY PAVEMENT MARKING (WHITE:SOLID; 24")   | LINEAR FOOT | 27       | 1.30       | 35.10      |
| MSR-18       | THERMOPLASTIC (WHITE:SOLID; 24")  | LINEAR FOOT | 27       | 3.55       | 95.85      |
| MOT          | MAINTENANCE OF TRAFFIC  | LUMP SUM    | 1        | 2,000      | 2,000      |

TOTAL BID FOR: SW 165th Street From SW 93rd Avenue to SW 92nd Avenue

\$ 20,951.15

SW 165ST FROM 93RD AVE-92ND

Legend

SW 164th St

SW 165th St

SW 166th St

SW 92nd Ave

SW 93rd Ave

Google Earth

© 2011 Google



300 ft

BID FORM 10 OF 10

LOCATION: SW 94th Avenue (From SW 170th Street to SW 168th Street) and SW 170TH Street From US-1 to SW 93RD Court - APPROX 4,900 SQ YDS

| BID ITEM NO. | DESCRIPTION   | UNIT        | QUANTITY | UNIT PRICE           | TOTAL COST           |
|--------------|---|-------------|----------|----------------------|----------------------|
| MSR-1        | 5' WIDE CONCRETE SIDEWALKS  | LF          |          |                      |                      |
| MSR-2        | ASPHALT CONCRETE (TYPE 1" THICK)  | TON         | 88       | 118. <sup>00</sup>   | 10,384               |
| MSR-3        | MILLING EXISTING PAVEMENT (1") PAYMENT WITH GREATER CUTS WILL BE PAID PROPORTIONALLY  | SQ YDS      | 1600     | 2.20                 | 3,520                |
| MSR-4        | ADJUST MANHOLE (THIS ITEM IS CONTINGENT UPON FIELD CONDITIONS AND MAY BE INCREASED, DECREASED OR ELIMINATED BY ENGINEER)                  | EACH        | —        | —                    |                      |
| MSR-5        | ADJUST EXISTING VALVE BOXES (THIS ITEM IS CONTINGENT UPON FIELD CONDITIONS AND MAY BE INCREASED, DECREASED OR ELIMINATED BY THE ENGINEER) | EACH        | 3        | 522.50               | 1,567.50             |
| MSR-6        | REFLECTIVE PAVEMENT MARKERS (CLASS B: MONO OR BI-DIRECTIONAL, ALL COLORS)   | EACH        | 18       | 4.00                 | 72. <sup>00</sup>    |
| MSR-9        | TEMPORARY PAVEMENT MARKING (WHITE/YELLOW:SOLID; 6")   | LINEAR FOOT | 400      | .40                  | 160. <sup>00</sup>   |
| MSR-10       | YELLOW, SOLID; 6"   | LINEAR FOOT | 400      | .95                  | 380. <sup>00</sup>   |
| MSR-13       | TEMPORARY PAVEMENT MARKING (WHITE:SOLID;12")  | LINEAR FOOT | 108      | .75                  | 81. <sup>00</sup>    |
| MSR-14       | THERMOPLASTIC (WHITE:SOLID; 12")  | LINEAR FOOT | 108      | 1.85                 | 199.80               |
| MSR-17       | TEMPORARY PAVEMENT MARKING (WHITE:SOLID; 24")   | LINEAR FOOT | 40       | 1.30                 | 52. <sup>00</sup>    |
| MSR-18       | THERMOPLASTIC (WHITE:SOLID; 24")  | LINEAR FOOT | 40       | 3.55                 | 142. <sup>00</sup>   |
| MOT          | MAINTENANCE OF TRAFFIC  | LUMP SUM    | 1        | 2,000. <sup>00</sup> | 2,000. <sup>00</sup> |

TOTAL BID FOR: SW 94th Ave From SW 170th Street to SW 168TH St and SW 170TH Street From US-1 to SW 93rd Court

\$ 18,558.<sup>30</sup>



SW 94 AVE FROM 170-168 ST/US1 TO 93 CT

Legend



Google Earth

© 2020 Google

300 ft

BID FORM 01 OF 10

LOCATION: HOPE AVENUE FROM SW 183RD Street to WAYNE AVENUE - APPROX 1,467 SQ Yds

| BID ITEM NO. | DESCRIPTION   | UNIT        | QUANTITY | UNIT PRICE | TOTAL COST  |
|--------------|---|-------------|----------|------------|-------------|
| MSR-1        | 4'WIDE CONCRETE SIDEWALKS   | LF          | 195      | \$24.00    | \$4,680.00  |
| MSR-2        | ASPHALT CONCRETE (TYPE 1" THICK)  | TON         | 70       | \$165.00   | \$11,550.00 |
| MSR-3        | MILLING EXISTING PAVEMENT (1") PAYMENT WITH GREATER CUTS WILL BE PAID PROPORTIONALLY  | SQ YDS      | 1,277    | \$3.50     | \$4,469.50  |
| MSR-4        | ADJUST MANHOLE (THIS ITEM IS CONTINGENT UPON FIELD CONDITIONS AND MAY BE INCREASED, DECREASED OR ELIMINATED BY ENGINEER)                  | EACH        | 0        | \$0.00     | \$0.00      |
| MSR-5        | ADJUST EXISTING VALVE BOXES (THIS ITEM IS CONTINGENT UPON FIELD CONDITIONS AND MAY BE INCREASED, DECREASED OR ELIMINATED BY THE ENGINEER) | EACH        | 0        | \$0.00     | \$0.00      |
| MSR-6        | REFLECTIVE PAVEMENT MARKERS (CLASS B: MONO OR BI-DIRECTIONAL, ALL COLORS)   | EACH        | 0        | \$0.00     | \$0.00      |
| MSR-9        | TEMPORARY PAVEMENT MARKING (WHITE/YELLOW:SOLID; 6")   | LINEAR FOOT | 5        | \$70.00    | \$350.00    |
| MSR-10       | YELLOW, SOLID; 6"   | LINEAR FOOT | 100      | \$15.00    | \$1,500.00  |
| MSR-13       | TEMPORARY PAVEMENT MARKING (WHITE:SOLID;12")  | LINEAR FOOT | 10       | \$35.00    | \$350.00    |
| MSR-14       | THERMOPLASTIC (WHITE:SOLID; 12")  | LINEAR FOOT | 0        | \$0.00     | \$0.00      |
| MSR-17       | TEMPORARY PAVEMENT MARKING (WHITE:SOLID; 24")   | LINEAR FOOT | 10       | \$35.00    | \$350.00    |
| MSR-18       | THERMOPLASTIC (WHITE:SOLID; 24")  | LINEAR FOOT | 0        | \$0.00     | \$0.00      |
| MOT          | MAINTENANCE OF TRAFFIC  | LUMP SUM    | 1        | \$1,500.00 | \$1,500.00  |

TOTAL BID FOR: HOPE AVENUE FROM SW 183RD ST TO WAYNE AVENUE

\$ 24,749.50



HOPE AVE. 183 st to WAYNE

Legend

20000 Hwy

SW 62nd Avenue Rd

SW 19th St

SW 19th St

SW 19th St

500 ft





BID FORM 02 OF 10

LOCATION: EAST HIBISCUS FROM S DIXIE HIGHWAY TO FRANJO ROAD - APPROX 2,000 SQ YDS

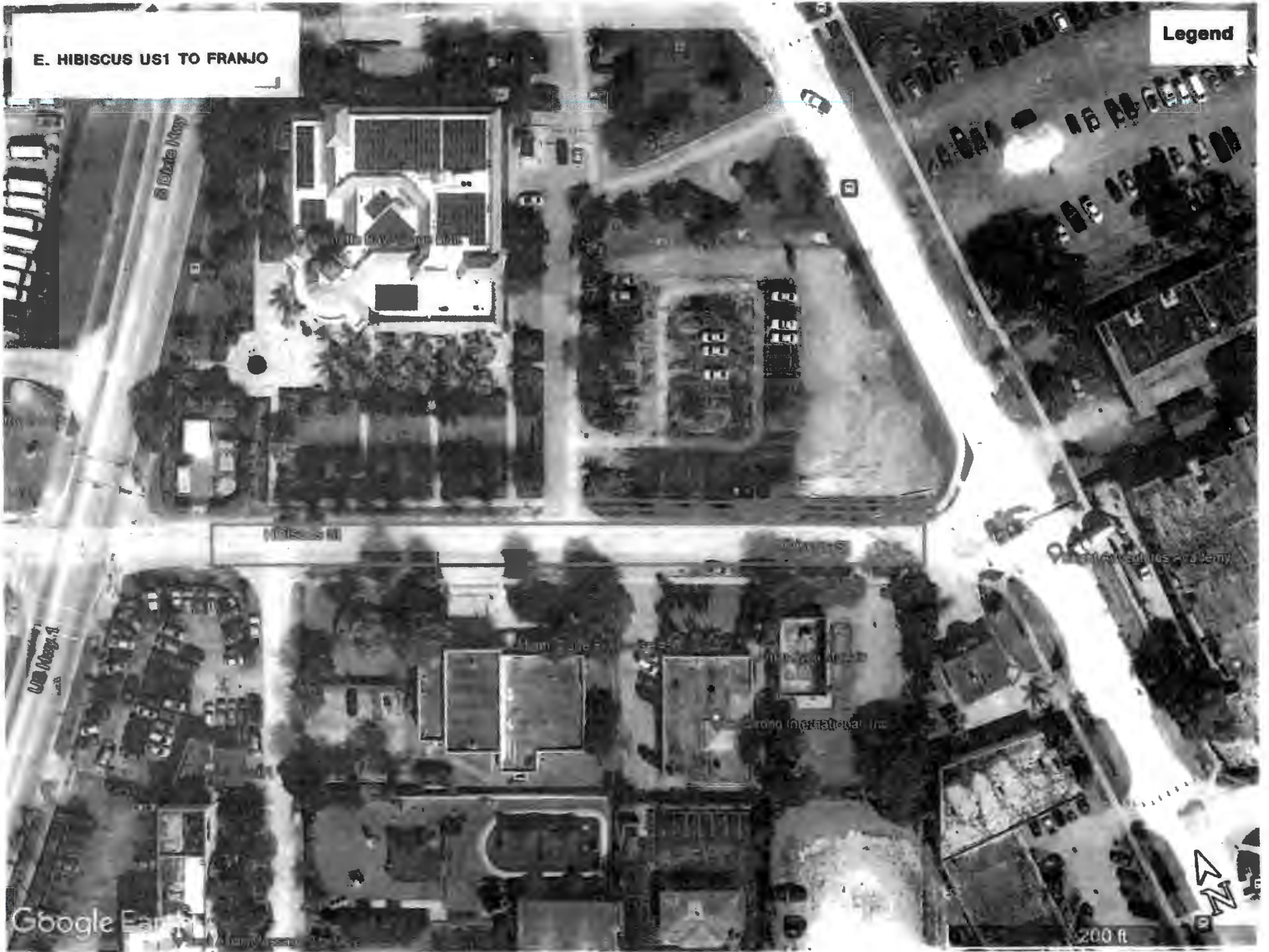
| BID ITEM NO. | DESCRIPTION   | UNIT        | QUANTITY | UNIT PRICE        | TOTAL COST        |
|--------------|---|-------------|----------|-------------------|-------------------|
| MSR-1        | 5' WIDE CONCRETE SIDEWALKS  | LF          | 410      | \$27.50           | \$11,275.00       |
| MSR-2        | ASPHALT CONCRETE (TYPE 1" THICK)  | TON         | 75       | \$165.00          | \$12,375.00       |
| MSR-3        | MILLING EXISTING PAVEMENT (1") PAYMENT WITH GREATER CUTS WILL BE PAID PROPORTIONALLY  | SQ YDS      | 1,410    | \$3.00            | \$4,230.00        |
| MSR-4        | ADJUST MANHOLE (THIS ITEM IS CONTINGENT UPON FIELD CONDITIONS AND MAY BE INCREASED, DECREASED OR ELIMINATED BY ENGINEER)                  | EACH        | 0        | \$0.00            | \$0.00            |
| MSR-5        | ADJUST EXISTING VALVE BOXES (THIS ITEM IS CONTINGENT UPON FIELD CONDITIONS AND MAY BE INCREASED, DECREASED OR ELIMINATED BY THE ENGINEER) | EACH        | 0        | \$0.00            | \$0.00            |
| MSR-6        | REFLECTIVE PAVEMENT MARKERS (CLASS B: MONO OR BI-DIRECTIONAL, ALL COLORS)   | EACH        | 6        | \$15.00           | \$90.00           |
| MSR-9        | TEMPORARY PAVEMENT MARKING (WHITE/YELLOW:SOLID; 6")   | LINEAR FOOT | 0        | <del>\$0.00</del> | <del>\$0.00</del> |
| MSR-10       | YELLOW, SOLID; 6"   | LINEAR FOOT | 100      | \$5.00            | \$500.00          |
| MSR-13       | TEMPORARY PAVEMENT MARKING (WHITE:SOLID;12")  | LINEAR FOOT | 0        | \$0.00            | \$0.00            |
| MSR-14       | THERMOPLASTIC (WHITE:SOLID; 12")  | LINEAR FOOT | 0        | \$0.00            | \$0.00            |
| MSR-17       | TEMPORARY PAVEMENT MARKING (WHITE:SOLID; 24")   | LINEAR FOOT | 0        | \$0.00            | \$0.00            |
| MSR-18       | THERMOPLASTIC (WHITE:SOLID; 24")  | LINEAR FOOT | 0        | \$0.00            | \$0.00            |
| MOT          | MAINTENANCE OF TRAFFIC  | LUMP SUM    | 1        | \$1,500.00        | \$1,500.00        |

TOTAL BID FOR: EAST HIBISCUS FROM S DIXIE HIGHWAY TO FRANJO ROAD

\$ 29,970.00

E. HIBISCUS US1 TO FRANJO

Legend



Google Earth

200 ft

BID FORM 03 OF 10

LOCATION: SW 163RD Street From SW 77TH Avenue to SW 74TH Avenue) - APPROX 3,875 SQ YDS

| BID ITEM NO. | DESCRIPTION   | UNIT        | QUANTITY | UNIT PRICE | TOTAL COST  |
|--------------|---|-------------|----------|------------|-------------|
| MSR-1        | 5' WIDE CONCRETE SIDEWALKS  | LF          | 0        | \$0.00     | \$0.00      |
| MSR-2        | ASPHALT CONCRETE (TYPE 1" THICK)  | TON         | 160      | \$165.00   | \$26,400.00 |
| MSR-3        | MILLING EXISTING PAVEMENT (1") PAYMENT WITH GREATER CUTS WILL BE PAID PROPORTIONALLY  | SQ YDS      | 2,888    | \$2.50     | \$7,220.00  |
| MSR-4        | ADJUST MANHOLE (THIS ITEM IS CONTINGENT UPON FIELD CONDITIONS AND MAY BE INCREASED, DECREASED OR ELIMINATED BY ENGINEER)                  | EACH        | 0        | \$0.00     | \$0.00      |
| MSR-5        | ADJUST EXISTING VALVE BOXES (THIS ITEM IS CONTINGENT UPON FIELD CONDITIONS AND MAY BE INCREASED, DECREASED OR ELIMINATED BY THE ENGINEER) | EACH        | 0        | \$0.00     | \$0.00      |
| MSR-6        | REFLECTIVE PAVEMENT MARKERS (CLASS B: MONO OR BI-DIRECTIONAL, ALL COLORS)   | EACH        | 8        | \$15.00    | \$120.00    |
| MSR-9        | TEMPORARY PAVEMENT MARKING (WHITE/YELLOW:SOLID; 6")   | LINEAR FOOT | 0        | \$0.00     | \$0.00      |
| MSR-10       | YELLOW, SOLID; 6"   | LINEAR FOOT | 0        | \$0.00     | \$0.00      |
| MSR-13       | TEMPORARY PAVEMENT MARKING (WHITE:SOLID;12")  | LINEAR FOOT | 100      | \$3.50     | \$350.00    |
| MSR-14       | THERMOPLASTIC (WHITE:SOLID; 12")  | LINEAR FOOT | 100      | \$8.50     | \$850.00    |
| MSR-17       | TEMPORARY PAVEMENT MARKING (WHITE:SOLID; 24")   | LINEAR FOOT | 10       | \$35.00    | \$350.00    |
| MSR-18       | THERMOPLASTIC (WHITE:SOLID; 24")  | LINEAR FOOT | 20       | \$22.50    | \$450.00    |
| MOT          | MAINTENANCE OF TRAFFIC  | LUMP SUM    | 1        | \$1,500.00 | \$1,500.00  |

TOTAL BID FOR: SW 163RD Street From SW 77TH Avenue to SW 74TH Avenue

\$ 37,240.00



SW 163 ST. 77TH TO 74 AVE.

Legend

Google Earth



400 ft

BID FORM 04 OF 10

LOCATION: SW 74th Avenue From SW 162nd Street to North Cul de Sac) - APPROX 1,300 SQ YDS

| BID ITEM NO. | DESCRIPTION   | UNIT        | QUANTITY | UNIT PRICE | TOTAL COST  |
|--------------|---|-------------|----------|------------|-------------|
| MSR-1        | 5' WIDE CONCRETE SIDEWALKS  | LF          | 0        | \$0.00     | \$0.00      |
| MSR-2        | ASPHALT CONCRETE (TYPE 1" THICK)  | TON         | 65       | \$165.00   | \$10,725.00 |
| MSR-3        | MILLING EXISTING PAVEMENT (1") PAYMENT WITH GREATER CUTS WILL BE PAID PROPORTIONALLY  | SQ YDS      | 1,162    | \$3.50     | \$4,067.00  |
| MSR-4        | ADJUST MANHOLE (THIS ITEM IS CONTINGENT UPON FIELD CONDITIONS AND MAY BE INCREASED, DECREASED OR ELIMINATED BY ENGINEER)                  | EACH        | 0        | \$0.00     | \$0.00      |
| MSR-5        | ADJUST EXISTING VALVE BOXES (THIS ITEM IS CONTINGENT UPON FIELD CONDITIONS AND MAY BE INCREASED, DECREASED OR ELIMINATED BY THE ENGINEER) | EACH        | 0        | \$0.00     | \$0.00      |
| MSR-6        | REFLECTIVE PAVEMENT MARKERS (CLASS B: MONO OR BI-DIRECTIONAL, ALL COLORS)   | EACH        | 4        | \$15.00    | \$60.00     |
| MSR-9        | TEMPORARY PAVEMENT MARKING (WHITE/YELLOW:SOLID; 6")   | LINEAR FOOT | 50       | \$7.00     | \$350.00    |
| MSR-10       | YELLOW, SOLID; 6"   | LINEAR FOOT | 50       | \$13.00    | \$650.00    |
| MSR-13       | TEMPORARY PAVEMENT MARKING (WHITE:SOLID;12")  | LINEAR FOOT | 0        | \$0.00     | \$0.00      |
| MSR-14       | THERMOPLASTIC (WHITE:SOLID; 12")  | LINEAR FOOT | 0        | \$0.00     | \$0.00      |
| MSR-17       | TEMPORARY PAVEMENT MARKING (WHITE:SOLID; 24")   | LINEAR FOOT | 10       | \$35.00    | \$350.00    |
| MSR-18       | THERMOPLASTIC (WHITE:SOLID; 24")  | LINEAR FOOT | 10       | \$35.00    | \$350.00    |
| MOT          | MAINTENANCE OF TRAFFIC  | LUMP SUM    | 1        | \$1,500.00 | \$1,500.00  |

TOTAL BID FOR: SW 74th Avenue From SW 162nd Street to North Cul-de-Sac

§ 18,052.00



SW 74TH AVE. 162 ST TO CUL DE SAC

Legend

Google Earth

300 ft





BID FORM 05 OF 10

LOCATION: SW 137th Street From SW 73rd Avenue to SW 72ND Avenue) - APPROX 1,700 SQ YDS

| BID ITEM NO. | DESCRIPTION   | UNIT        | QUANTITY | UNIT PRICE | TOTAL COST  |
|--------------|---|-------------|----------|------------|-------------|
| MSR-1        | 5' WIDE CONCRETE SIDEWALKS  | LF          | 25       | \$40.00    | \$1,000.00  |
| MSR-2        | ASPHALT CONCRETE (TYPE 1" THICK)  | TON         | 80       | \$165.00   | \$13,200.00 |
| MSR-3        | MILLING EXISTING PAVEMENT (1") PAYMENT WITH GREATER CUTS WILL BE PAID PROPORTIONALLY  | SQ YDS      | 1,444    | \$3.00     | \$4,332.00  |
| MSR-4        | ADJUST MANHOLE (THIS ITEM IS CONTINGENT UPON FIELD CONDITIONS AND MAY BE INCREASED, DECREASED OR ELIMINATED BY ENGINEER)                  | EACH        | 0        | \$0.00     | \$0.00      |
| MSR-5        | ADJUST EXISTING VALVE BOXES (THIS ITEM IS CONTINGENT UPON FIELD CONDITIONS AND MAY BE INCREASED, DECREASED OR ELIMINATED BY THE ENGINEER) | EACH        | 0        | \$0.00     | \$0.00      |
| MSR-6        | REFLECTIVE PAVEMENT MARKERS (CLASS B: MONO OR BI-DIRECTIONAL, ALL COLORS)   | EACH        | 0        | \$0.00     | \$0.00      |
| MSR-9        | TEMPORARY PAVEMENT MARKING (WHITE/YELLOW:SOLID; 6")   | LINEAR FOOT | 0        | \$0.00     | \$0.00      |
| MSR-10       | YELLOW, SOLID; 6"   | LINEAR FOOT | 200      | \$2.25     | \$450.00    |
| MSR-13       | TEMPORARY PAVEMENT MARKING (WHITE:SOLID;12")  | LINEAR FOOT | 80       | \$6.00     | \$480.00    |
| MSR-14       | THERMOPLASTIC (WHITE:SOLID; 12")  | LINEAR FOOT | 0        | \$0.00     | \$0.00      |
| MSR-17       | TEMPORARY PAVEMENT MARKING (WHITE:SOLID; 24")   | LINEAR FOOT | 0        | \$0.00     | \$0.00      |
| MSR-18       | THERMOPLASTIC (WHITE:SOLID; 24")  | LINEAR FOOT | 0        | \$0.00     | \$0.00      |
| MOT          | MAINTENANCE OF TRAFFIC  | LUMP SUM    | 1        | \$1,500.00 | \$1,500.00  |

TOTAL BID FOR: SW 137th Street From SW 73rd Avenue to SW 72ND Avenue

§ 20,962.00

SW 137ST FROM 73-72ND AVE.

Legend



Google Earth

Map data © OpenStreetMap contributors, Imagery © Google

200 ft



SW 72nd Ave

BID FORM 06 OF 10

LOCATION: SW 169th Street (From S Dixie Hwy to SW 92ND Court) - APPROX 4,400 SQ YDS

| BID ITEM NO. | DESCRIPTION   | UNIT        | QUANTITY | UNIT PRICE | TOTAL COST  |
|--------------|---|-------------|----------|------------|-------------|
| MSR-1        | 5' WIDE CONCRETE SIDEWALKS  | LF          | 150      | \$40.00    | \$6,000.00  |
| MSR-2        | ASPHALT CONCRETE (TYPE 1" THICK)  | TON         | 180      | \$165.00   | \$29,700.00 |
| MSR-3        | MILLING EXISTING PAVEMENT (1") PAYMENT WITH GREATER CUTS WILL BE PAID PROPORTIONALLY  | SQ YDS      | 3,353    | \$2.00     | \$6,706.00  |
| MSR-4        | ADJUST MANHOLE (THIS ITEM IS CONTINGENT UPON FIELD CONDITIONS AND MAY BE INCREASED, DECREASED OR ELIMINATED BY ENGINEER)                  | EACH        | 0        | \$0.00     | \$0.00      |
| MSR-5        | ADJUST EXISTING VALVE BOXES (THIS ITEM IS CONTINGENT UPON FIELD CONDITIONS AND MAY BE INCREASED, DECREASED OR ELIMINATED BY THE ENGINEER) | EACH        | 0        | \$0.00     | \$0.00      |
| MSR-6        | REFLECTIVE PAVEMENT MARKERS (CLASS B: MONO OR BI-DIRECTIONAL, ALL COLORS)   | EACH        | 0        | \$0.00     | \$0.00      |
| MSR-9        | TEMPORARY PAVEMENT MARKING (WHITE/YELLOW:SOLID; 6")   | LINEAR FOOT | 0        | \$0.00     | \$0.00      |
| MSR-10       | YELLOW, SOLID; 6"   | LINEAR FOOT | 0        | \$0.00     | \$0.00      |
| MSR-13       | TEMPORARY PAVEMENT MARKING (WHITE:SOLID;12")  | LINEAR FOOT | 0        | \$0.00     | \$0.00      |
| MSR-14       | THERMOPLASTIC (WHITE:SOLID; 12")  | LINEAR FOOT | 0        | \$0.00     | \$0.00      |
| MSR-17       | TEMPORARY PAVEMENT MARKING (WHITE:SOLID; 24")   | LINEAR FOOT | 0        | \$0.00     | \$0.00      |
| MSR-18       | THERMOPLASTIC (WHITE:SOLID; 24")  | LINEAR FOOT | 0        | \$0.00     | \$0.00      |
| NOT          | MAINTENANCE OF TRAFFIC  | LUMP SUM    | 1        | \$1,500.00 | \$1,500.00  |

TOTAL BID FOR: SW 169th Street From S Dixie Hwy to SW 92ND Court

§ 45,706.00

\*\*\*Additional (Included in TOTAL BID FOR SW 137th St FROM SW 73rd AVE to SW 72nd AVE): Meter Boxes to be Replaced EACH 3 \$600 \$1,800.00



SW 169 ST. FROM US1-92ND. CT.

Legend



Google Earth  
© 2020 Google

500 ft



BID FORM 07 OF 10

LOCATION: SW 94th Court (From SW 170TH Street to SW 168TH Street) - APPROX 1,890 SQ YDS

| BID ITEM NO. | DESCRIPTION   | UNIT        | QUANTITY | UNIT PRICE | TOTAL COST  |
|--------------|---|-------------|----------|------------|-------------|
| MSR-1        | 5' WIDE CONCRETE SIDEWALKS  | LF          | 250      | \$30.00    | \$7,500.00  |
| MSR-2        | ASPHALT CONCRETE (TYPE 1" THICK)  | TON         | 150      | \$165.00   | \$24,750.00 |
| MSR-3        | MILLING EXISTING PAVEMENT (1") PAYMENT WITH GREATER CUTS WILL BE PAID PROPORTIONALLY  | SQ YDS      | 2,783    | \$2.50     | \$6,957.50  |
| MSR-4        | ADJUST MANHOLE (THIS ITEM IS CONTINGENT UPON FIELD CONDITIONS AND MAY BE INCREASED, DECREASED OR ELIMINATED BY ENGINEER)                  | EACH        | 0        |            |             |
| MSR-5        | ADJUST EXISTING VALVE BOXES (THIS ITEM IS CONTINGENT UPON FIELD CONDITIONS AND MAY BE INCREASED, DECREASED OR ELIMINATED BY THE ENGINEER) | EACH        | 4        | \$550.00   | \$2,200.00  |
| MSR-6        | REFLECTIVE PAVEMENT MARKERS (CLASS B: MONO OR BI-DIRECTIONAL, ALL COLORS)   | EACH        | 8        | \$15.00    | \$120.00    |
| MSR-9        | TEMPORARY PAVEMENT MARKING (WHITE/YELLOW:SOLID; 6")   | LINEAR FOOT | 100      | \$3.50     | \$350.00    |
| MSR-10       | YELLOW, SOLID; 6"   | LINEAR FOOT | 0        | \$0.00     | \$0.00      |
| MSR-13       | TEMPORARY PAVEMENT MARKING (WHITE:SOLID;12")  | LINEAR FOOT | 25       | \$14.00    | \$350.00    |
| MSR-14       | THERMOPLASTIC (WHITE:SOLID; 12")  | LINEAR FOOT | 0        | \$0.00     | \$0.00      |
| MSR-17       | TEMPORARY PAVEMENT MARKING (WHITE:SOLID; 24")   | LINEAR FOOT | 0        | \$0.00     | \$0.00      |
| MSR-18       | THERMOPLASTIC (WHITE:SOLID; 24")  | LINEAR FOOT | 25       | \$38.00    | \$950.00    |
| MOT          | MAINTENANCE OF TRAFFIC  | LUMP SUM    | 1        | \$1,500.00 | \$1,500.00  |

TOTAL BID FOR: SW 94th Court From SW 170TH Street to SW 168TH Street

\$ 44,677.50



Legend

SW 94 CT. FROM 170ST.-168ST.





BID FORM 08 OF 10

LOCATION: SW 170th Lane (From SW 94th Avenue to Cul-de-Sac) - APPROX 1,603 SQ YDS

| BID ITEM NO. | DESCRIPTION  | UNIT        | QUANTITY | UNIT PRICE | TOTAL COST  |
|--------------|--|-------------|----------|------------|-------------|
| MSR-1        | 5' WIDE CONCRETE SIDEWALKS   | LF          | 115      | \$30.00    | \$3,450.00  |
| MSR-2        | ASPHALT CONCRETE (TYPE 1" THICK)   | TON         | 65       | \$165.00   | \$10,725.00 |
| MSR-3        | MILLING EXISTING PAVEMENT (1") PAYMENT WITH GREATER CUTS WILL BE PAID PROPORTIONALLY   | SQ YDS      | 1,144    | \$3.00     | \$3,432.00  |
| MSR-4        | ADJUST MANHOLE (THIS ITEM IS CONTINGENT UPON FIELD CONDITIONS AND MAY BE INCREASED,<br>DECREASED OR ELIMINATED BY ENGINEER)                  | EACH        | 0        | \$0.00     | \$0.00      |
| MSR-5        | ADJUST EXISTING VALVE BOXES (THIS ITEM IS CONTINGENT UPON FIELD CONDITIONS AND MAY BE<br>INCREASED, DECREASED OR ELIMINATED BY THE ENGINEER) | EACH        | 0        | \$0.00     | \$0.00      |
| MSR-6        | REFLECTIVE PAVEMENT MARKERS (CLASS B: MONO OR BI-DIRECTIONAL, ALL COLORS)  | EACH        | 0        | \$0.00     | \$0.00      |
| MSR-9        | TEMPORARY PAVEMENT MARKING (WHITE/YELLOW:SOLID; 6")  | LINEAR FOOT | 0        | \$0.00     | \$0.00      |
| MSR-10       | YELLOW, SOLID; 6"  | LINEAR FOOT | 0        | \$0.00     | \$0.00      |
| MSR-13       | TEMPORARY PAVEMENT MARKING (WHITE:SOLID;12")   | LINEAR FOOT | 0        | \$0.00     | \$0.00      |
| MSR-14       | THERMOPLASTIC (WHITE:SOLID; 12")   | LINEAR FOOT | 0        | \$0.00     | \$0.00      |
| MSR-17       | TEMPORARY PAVEMENT MARKING (WHITE:SOLID; 24")  | LINEAR FOOT | 0        | \$0.00     | \$0.00      |
| MSR-18       | THERMOPLASTIC (WHITE:SOLID; 24")   | LINEAR FOOT | 0        | \$0.00     | \$0.00      |
| MOT          | MAINTENANCE OF TRAFFIC   | LUMP SUM    | 1        | \$1,500.00 | \$1,500.00  |

TOTAL BID FOR: SW 170th Lane From SW 94TH Avenue to Cul de Sac

\$ 19,107.00

SW 170 LANE FROM 94 AVE TO CUL DE SAC

Legend



Google Earth

200 ft



BID FORM 09 OF 10

LOCATION: SW 165th Street (From SW 93rd Avenue to SW 92nd Avenue) - APPROX 1,922 SQ YDS

| BID ITEM NO. | DESCRIPTION   | UNIT        | QUANTITY | UNIT PRICE | TOTAL COST  |
|--------------|---|-------------|----------|------------|-------------|
| MSR-1        | 5' WIDE CONCRETE SIDEWALKS  | LF          | 25       | \$30.00    | \$750.00    |
| MSR-2        | ASPHALT CONCRETE (TYPE 1" THICK)  | TON         | 80       | \$165.00   | \$13,200.00 |
| MSR-3        | MILLING EXISTING PAVEMENT (1") PAYMENT WITH GREATER CUTS WILL BE PAID PROPORTIONALLY  | SQ YDS      | 1,417    | \$2.50     | \$3,542.50  |
| MSR-4        | ADJUST MANHOLE (THIS ITEM IS CONTINGENT UPON FIELD CONDITIONS AND MAY BE INCREASED, DECREASED OR ELIMINATED BY ENGINEER)                  | EACH        | 0        | \$0.00     | \$0.00      |
| MSR-5        | ADJUST EXISTING VALVE BOXES (THIS ITEM IS CONTINGENT UPON FIELD CONDITIONS AND MAY BE INCREASED, DECREASED OR ELIMINATED BY THE ENGINEER) | EACH        | 0        | \$0.00     | \$0.00      |
| MSR-6        | REFLECTIVE PAVEMENT MARKERS (CLASS B: MONO OR BI-DIRECTIONAL, ALL COLORS)   | EACH        | 0        | \$0.00     | \$0.00      |
| MSR-9        | TEMPORARY PAVEMENT MARKING (WHITE/YELLOW:SOLID; 6")   | LINEAR FOOT | 50       | \$7.00     | \$350.00    |
| MSR-10       | YELLOW, SOLID; 6"   | LINEAR FOOT | 0        | \$0.00     | \$0.00      |
| MSR-13       | TEMPORARY PAVEMENT MARKING (WHITE:SOLID;12")  | LINEAR FOOT | 50       | \$7.00     | \$350.00    |
| MSR-14       | THERMOPLASTIC (WHITE:SOLID; 12")  | LINEAR FOOT | 0        | \$0.00     | \$0.00      |
| MSR-17       | TEMPORARY PAVEMENT MARKING (WHITE:SOLID; 24")   | LINEAR FOOT | 0        | \$0.00     | \$0.00      |
| MSR-18       | THERMOPLASTIC (WHITE:SOLID; 24")  | LINEAR FOOT | 25       | \$38.00    | \$950.00    |
| MOT          | MAINTENANCE OF TRAFFIC  | LUMP SUM    | 1        | \$1,500.00 | \$1,500.00  |

TOTAL BID FOR: SW 165th Street From SW 93rd Avenue to SW 92nd Avenue

§ 20,642.50



Legend

300 ft



SW 92nd Ave

93rd Ave

SW 165th St

SW 165th ST FROM 93RD AVE-92ND

Google Earth

© 2008 Google



BID FORM 10 OF 10

LOCATION: SW 94th Avenue (From SW 170th Street to SW 168th Street) and SW 170TH Street From US-1 to SW 93RD Court - APPROX 4,900 SQ YDS

| BID ITEM NO. | DESCRIPTION   | UNIT        | QUANTITY | UNIT PRICE | TOTAL COST  |
|--------------|---|-------------|----------|------------|-------------|
| MSR-1        | 5' WIDE CONCRETE SIDEWALKS  | LF          | 50       | \$30.00    | \$1,500.00  |
| MSR-2        | ASPHALT CONCRETE (TYPE 1" THICK)  | TON         | 75       | \$165.00   | \$12,375.00 |
| MSR-3        | MILLING EXISTING PAVEMENT (1") PAYMENT WITH GREATER CUTS WILL BE PAID PROPORTIONALLY  | SQ YDS      | 1,333    | \$3.00     | \$3,999.00  |
| MSR-4        | ADJUST MANHOLE (THIS ITEM IS CONTINGENT UPON FIELD CONDITIONS AND MAY BE INCREASED, DECREASED OR ELIMINATED BY ENGINEER)                  | EACH        | 0        | \$0.00     | \$0.00      |
| MSR-5        | ADJUST EXISTING VALVE BOXES (THIS ITEM IS CONTINGENT UPON FIELD CONDITIONS AND MAY BE INCREASED, DECREASED OR ELIMINATED BY THE ENGINEER) | EACH        | 3        | \$550.00   | \$1,650.00  |
| MSR-6        | REFLECTIVE PAVEMENT MARKERS (CLASS B: MONO OR BI-DIRECTIONAL, ALL COLORS)   | EACH        | 0        | \$0.00     | \$0.00      |
| MSR-9        | TEMPORARY PAVEMENT MARKING (WHITE/YELLOW:SOLID; 6")   | LINEAR FOOT | 50       | \$9.00     | \$450.00    |
| MSR-10       | YELLOW, SOLID; 6"   | LINEAR FOOT | 0        | \$0.00     | \$0.00      |
| MSR-13       | TEMPORARY PAVEMENT MARKING (WHITE:SOLID;12")  | LINEAR FOOT | 50       | \$9.00     | \$450.00    |
| MSR-14       | THERMOPLASTIC (WHITE:SOLID; 12")  | LINEAR FOOT | 0        | \$0.00     | \$0.00      |
| MSR-17       | TEMPORARY PAVEMENT MARKING (WHITE:SOLID; 24")   | LINEAR FOOT | 0        | \$0.00     | \$0.00      |
| MSR-18       | THERMOPLASTIC (WHITE:SOLID; 24")  | LINEAR FOOT | 75       | \$16.00    | \$1,200.00  |
| MOT          | MAINTENANCE OF TRAFFIC  | LUMP SUM    | 1        | \$1,500.00 | \$1,500.00  |

TOTAL BID FOR: SW 94th Ave From SW 170th Street to SW 168TH St and SW 170TH Street From US-1 to SW 93rd Court

\$ 23,124.00



SW 94 AVE FROM 170-168 ST/US1 TO 93 CT

Legend



SW 64th Ave

Google Earth

300 ft