

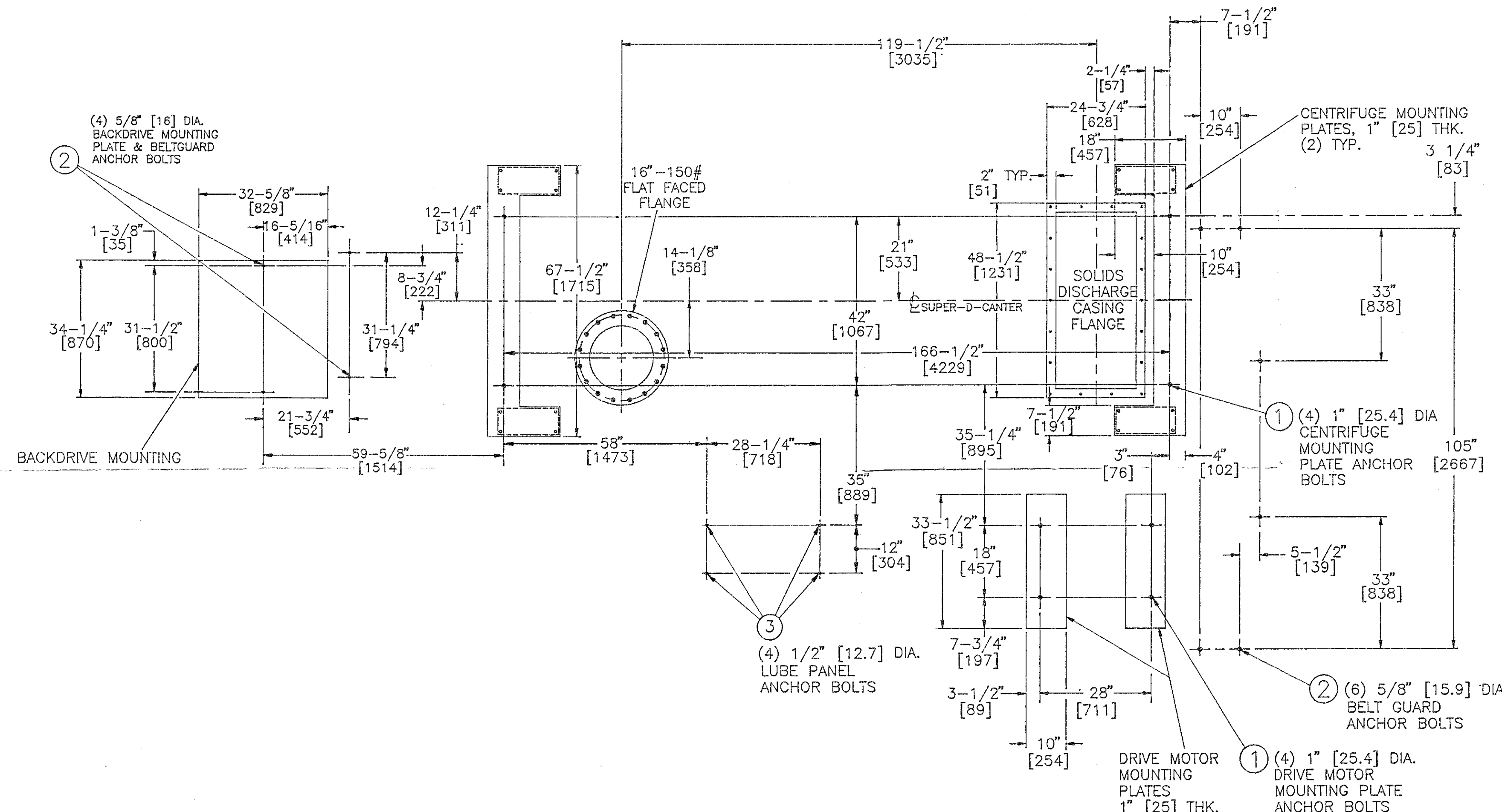
FILE #: E2533.5S
DISK #: DDP-DWG-0

P-E2533.5S

CENT
NOTES
MML

LPLO

BDIL



- NOTES :
- SEE CENTRIFUGE DIMENSION SHEET P-F1015.5S.
 - THE CENTRIFUGE, DRIVE MOTOR & BACKDRIVE ISOLATOR MOUNTING PLATES MUST BE LEVEL AND AT THE SAME ELEVATION. SHIM THESE POINTS TO WITHIN 1/32" [0.8] OF EACH OTHER. SHIMS MUST BE AT LEAST AS LARGE AS THE BASE AREA OF THE ISOLATORS AND MOUNTING FEET TO MAINTAIN A FLAT SURFACE.

THIS PRINT CERTIFIED FOR: _____
 ULTIMATE CUSTOMER BATTLE CREEK, MI
 ADDRESS BATTLE CREEK WWTP
 PROJECT CENTRIFUGE EQUIPMENT-CENTR #038/34/B
 SOLD TO BATTLE CREEK
 PURCHASE ORDER NO. 0028934
 SHARPLES ORDER NO. 488869-6872
 CONSULTING ENGINEER McNAMEE, PORTER, & SEELY, INC.
 CERTIFIED BY *[Signature]* DATE 6-17-99

THIS COPY IS PART OF SUBMITTAL NO. 1

THIS DRAWING WAS DRAWN ON A CAD SYSTEM.
DO NOT REVISE MANUALLY.

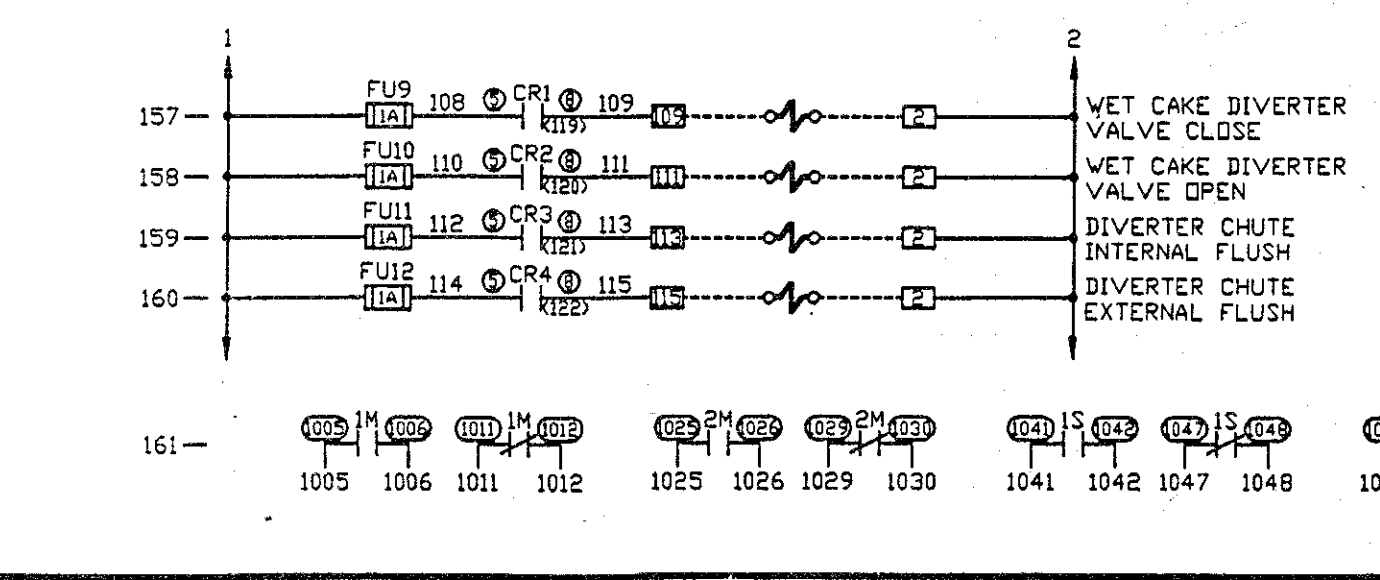
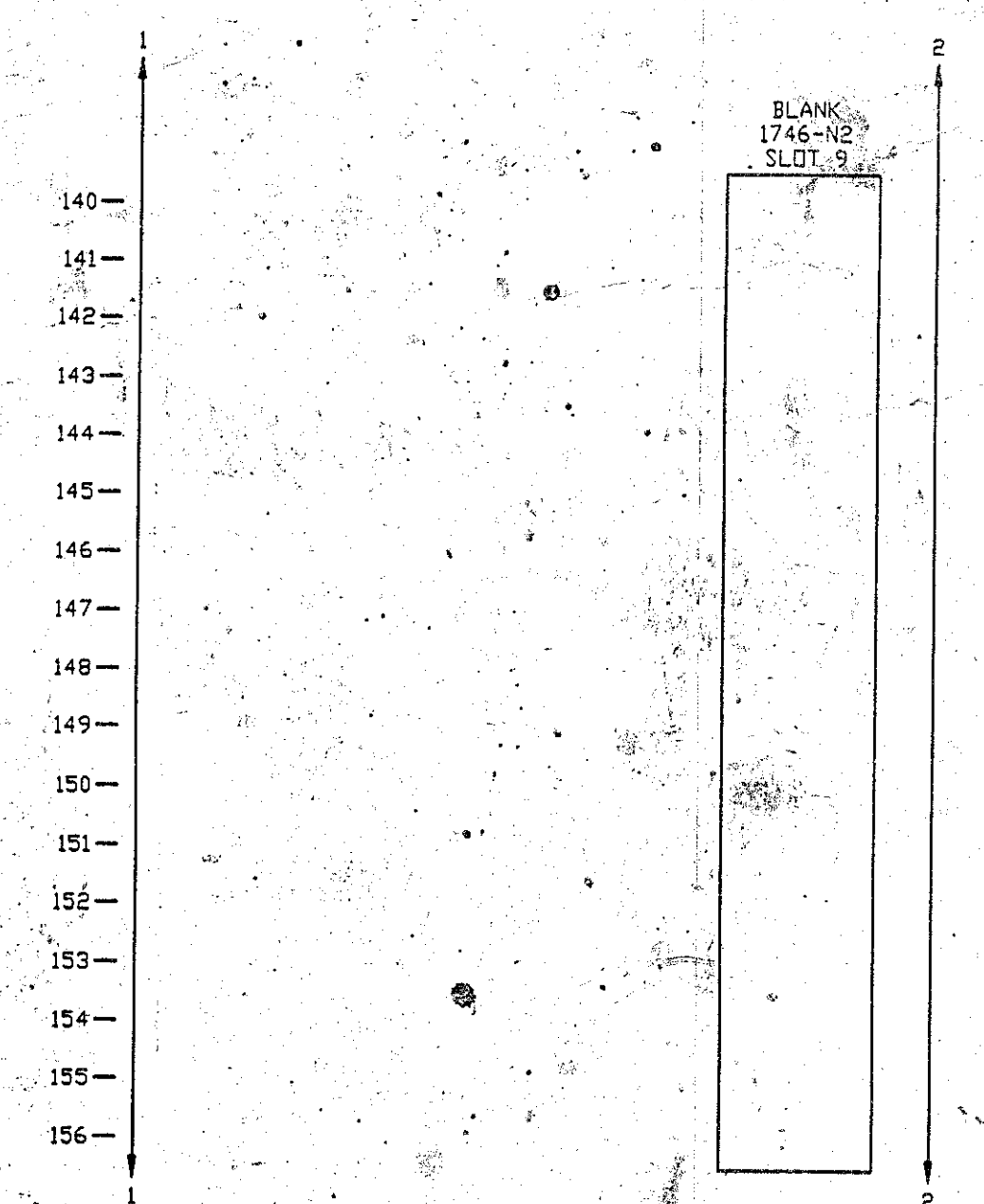
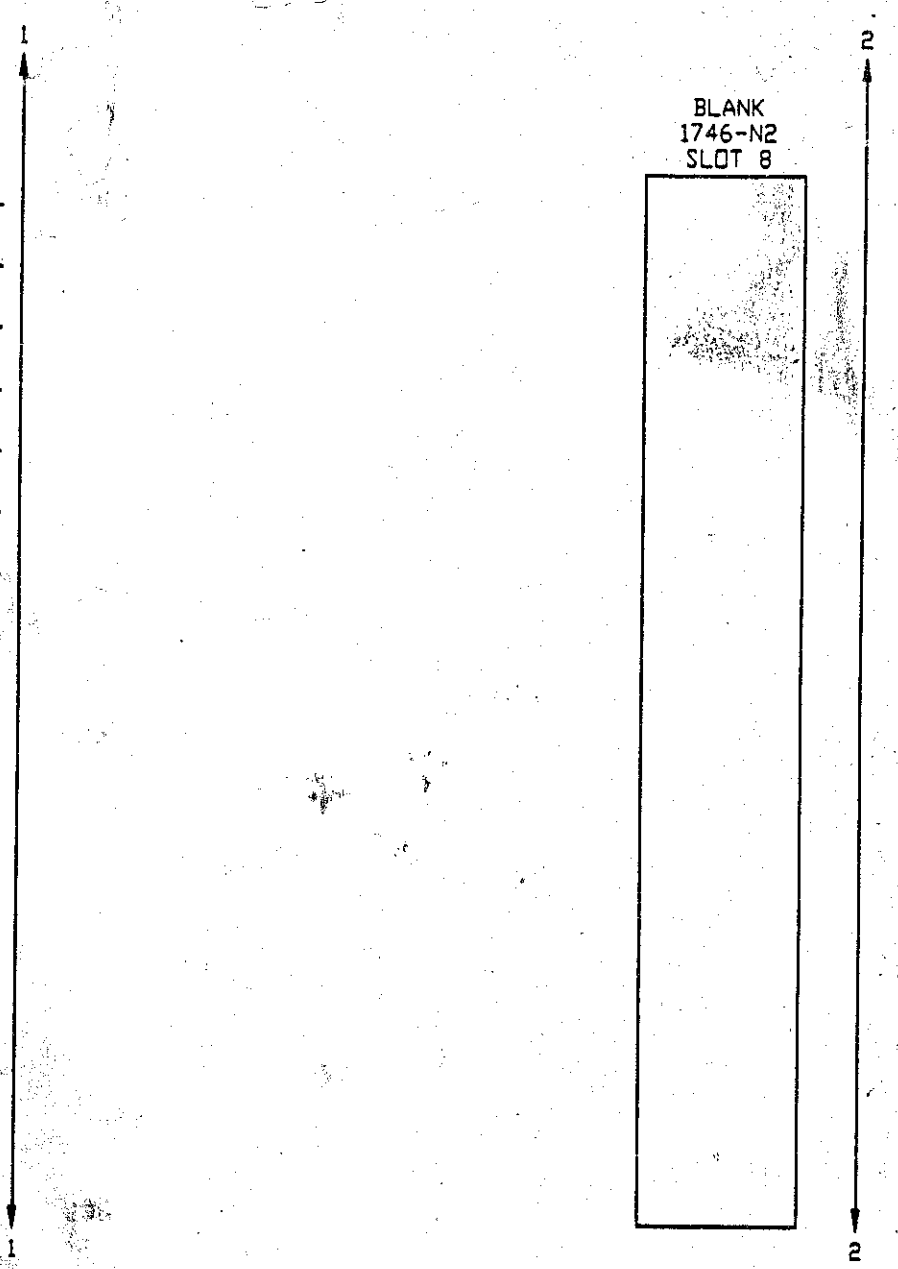
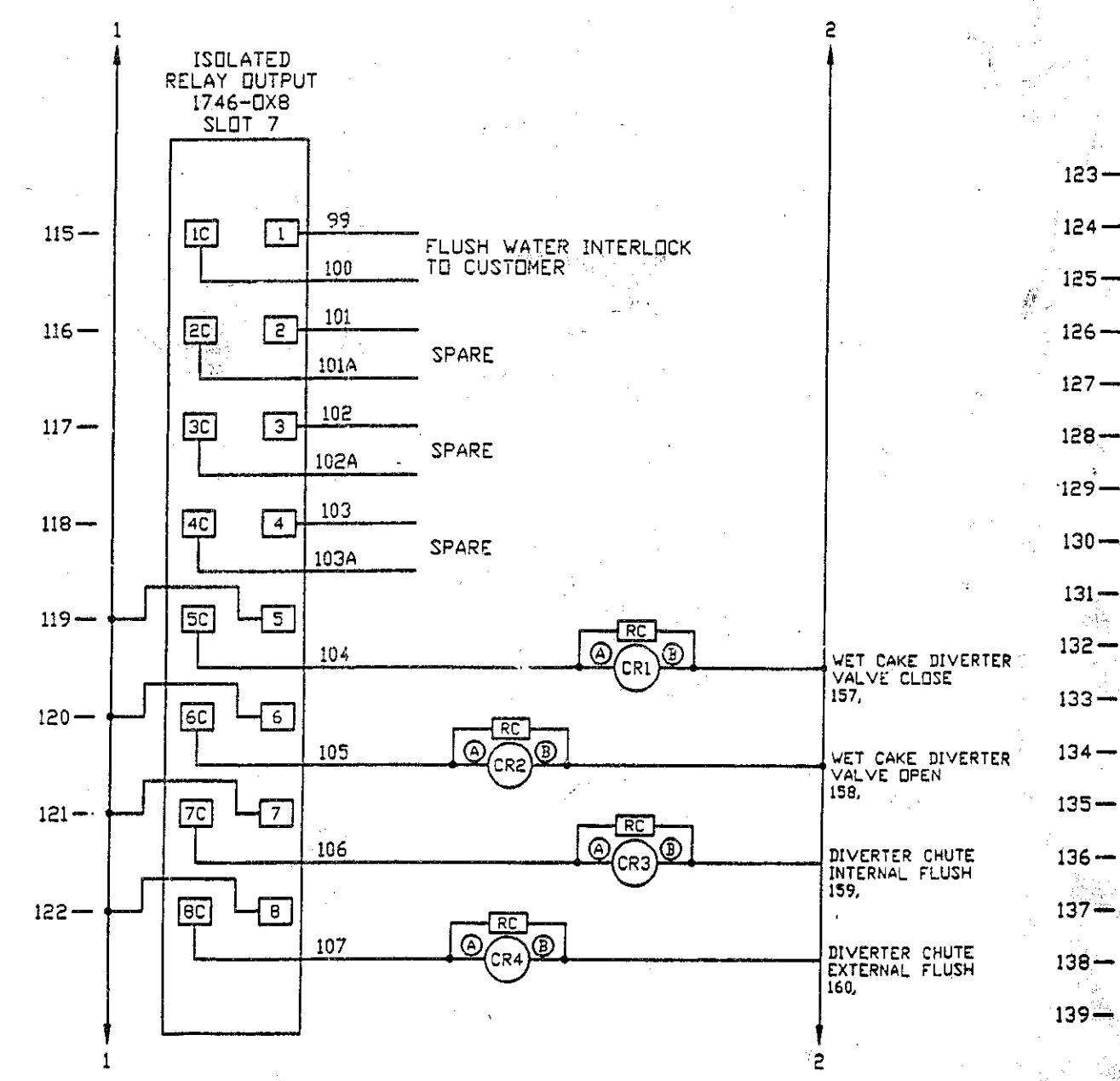
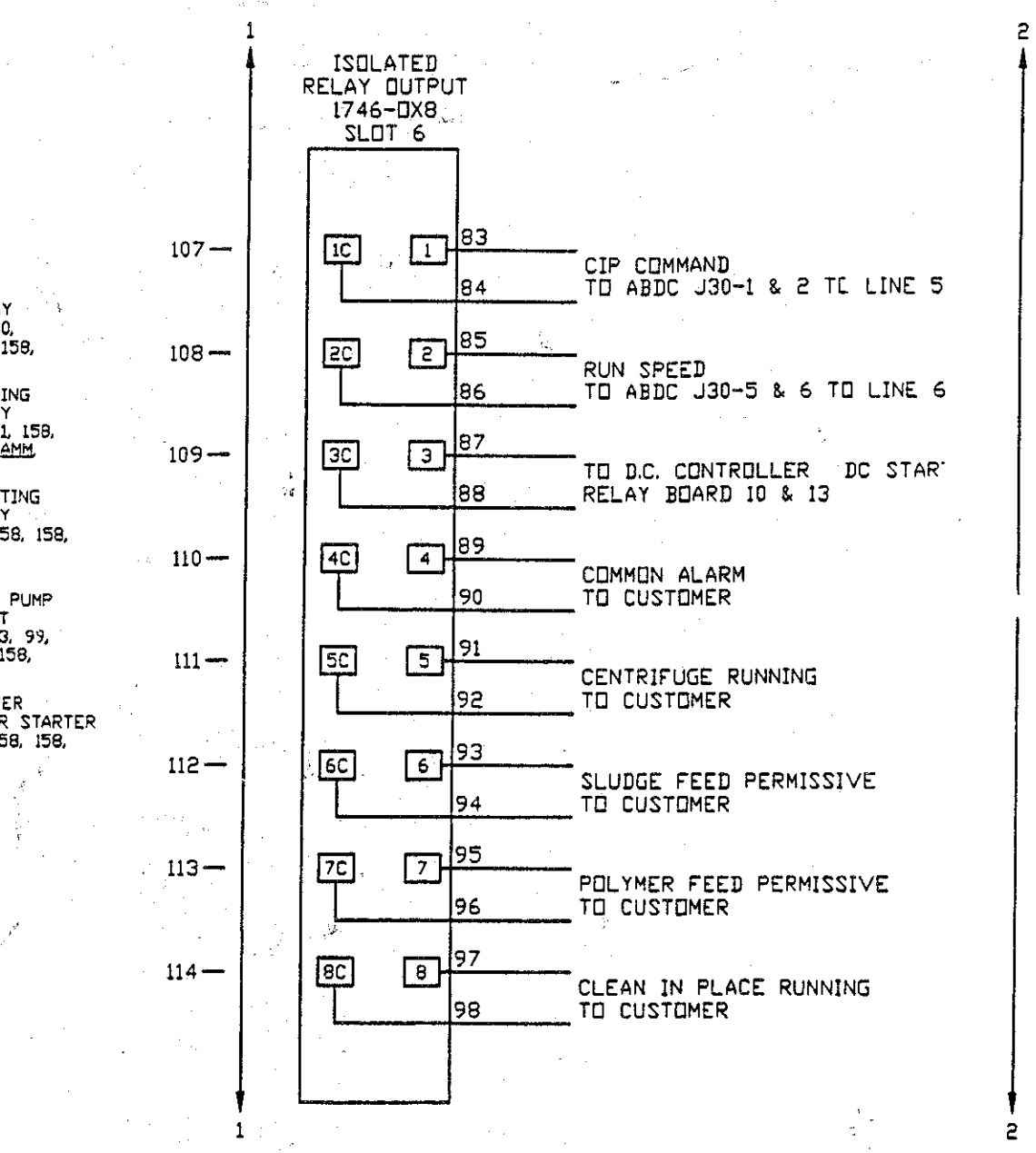
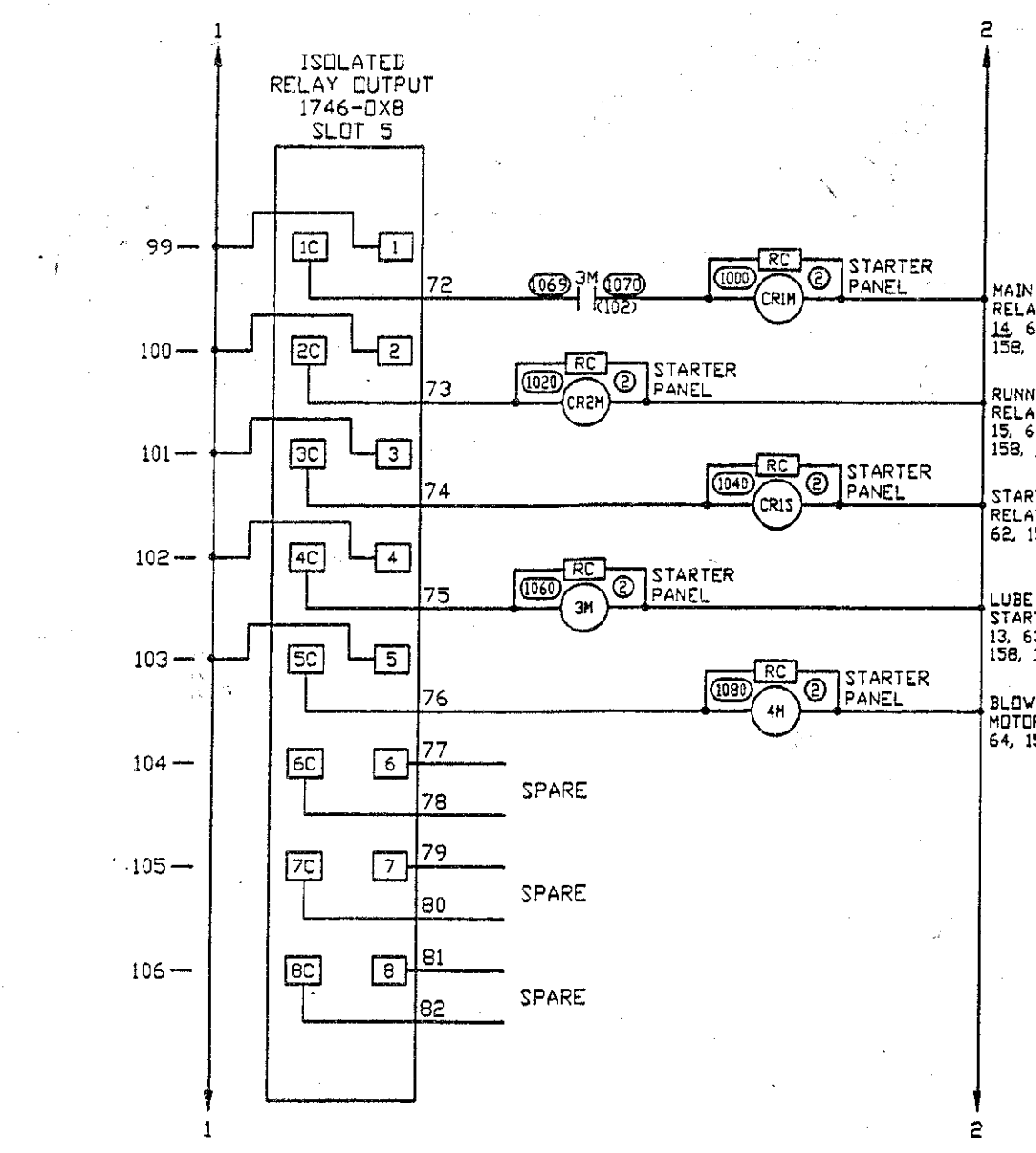
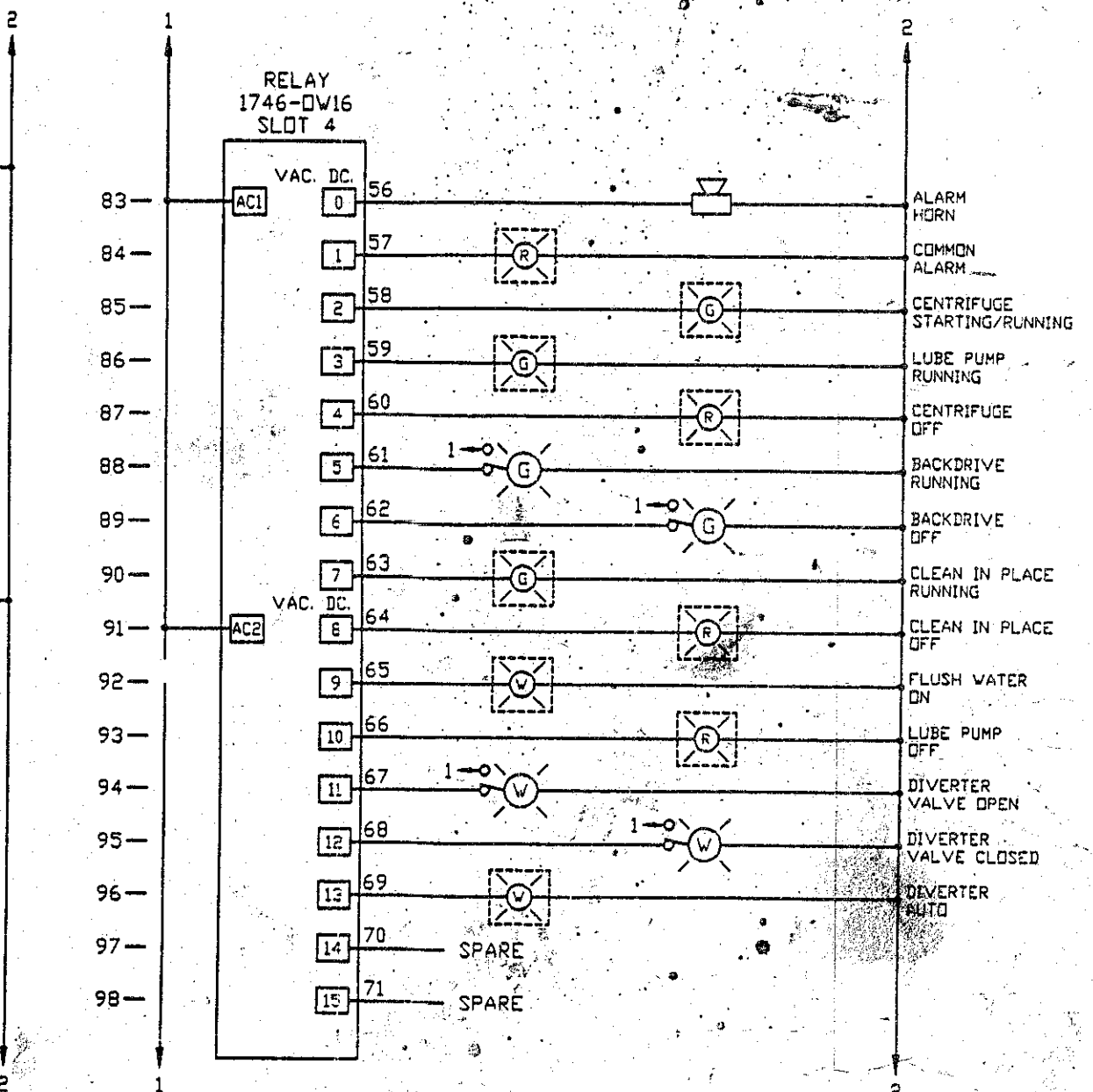
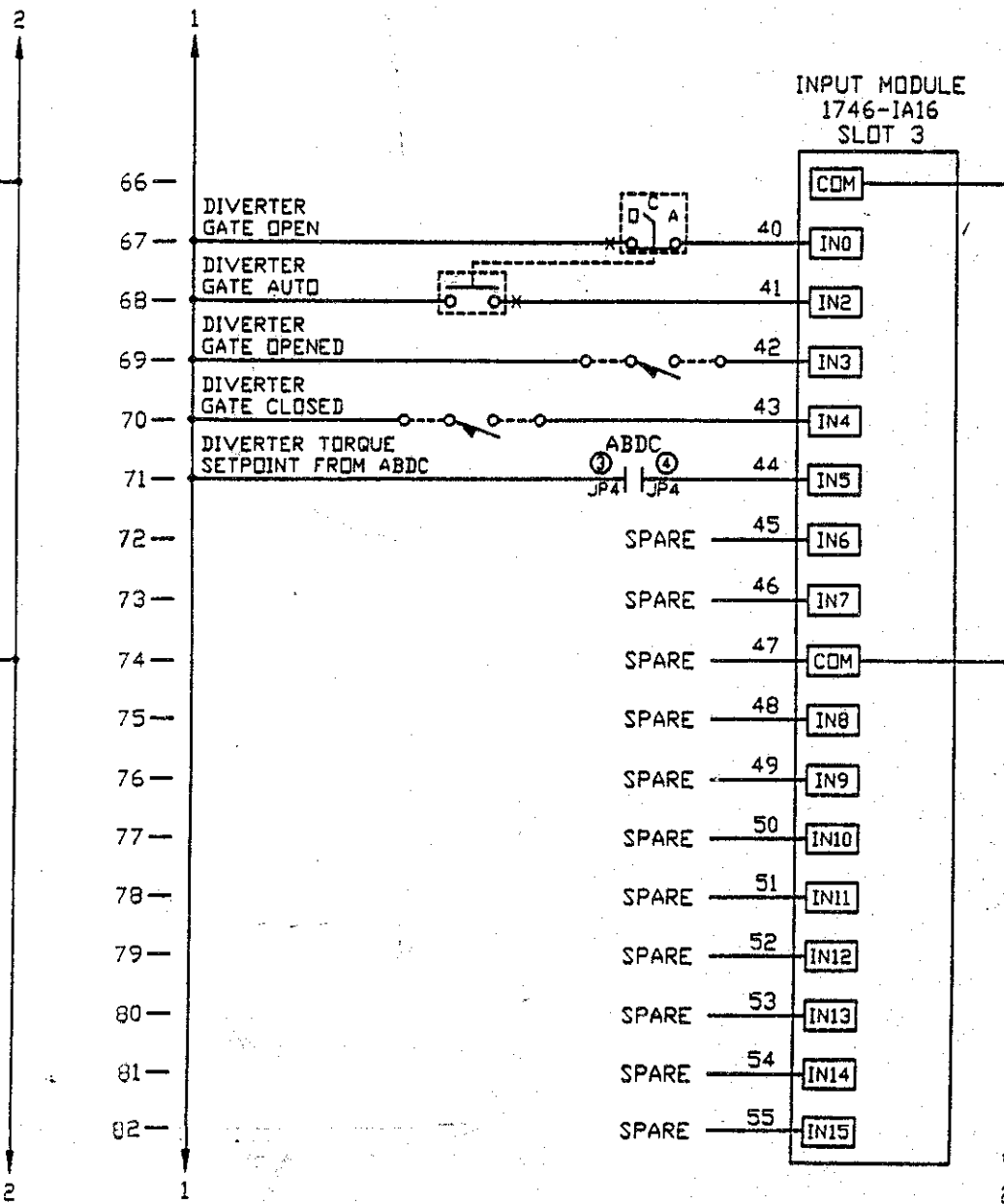
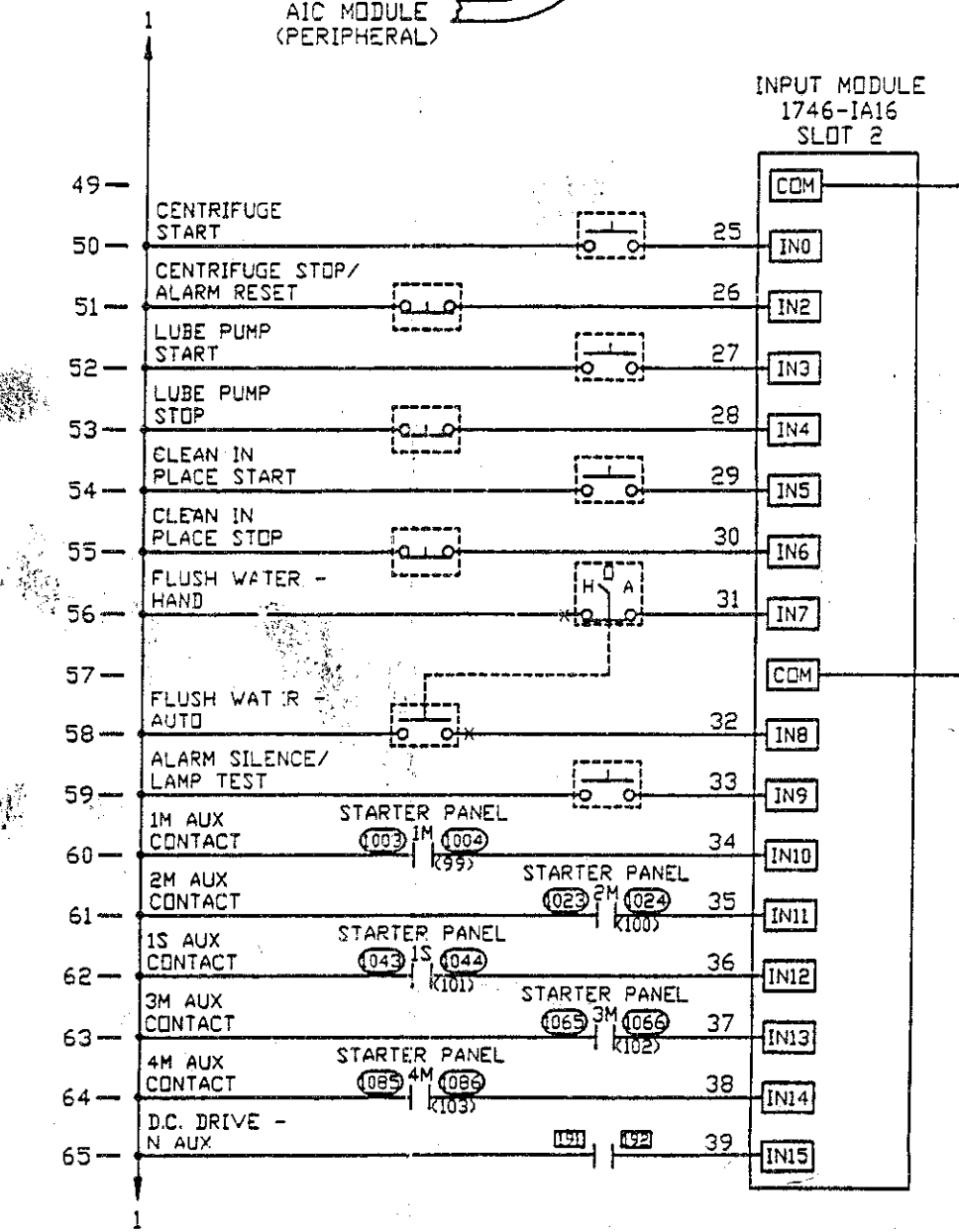
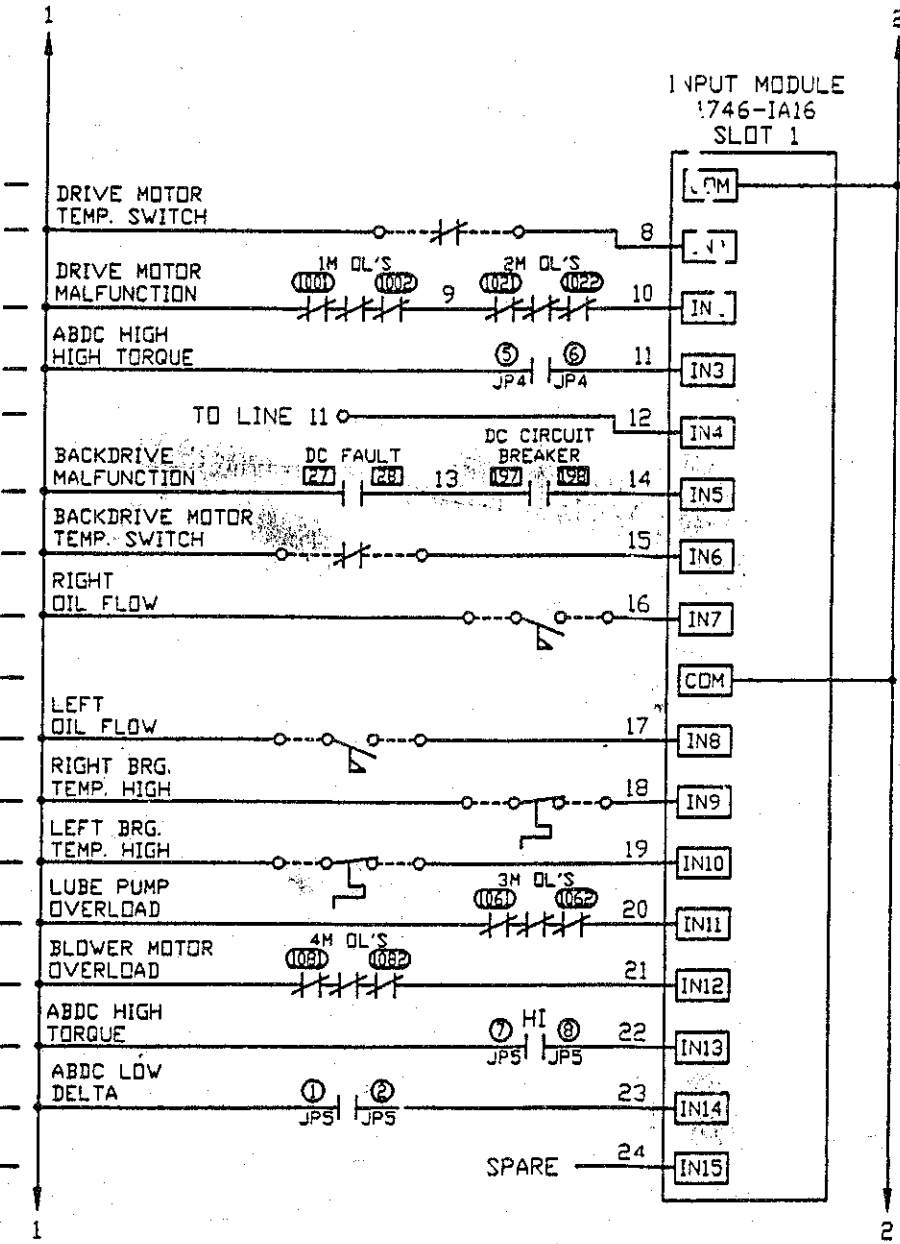
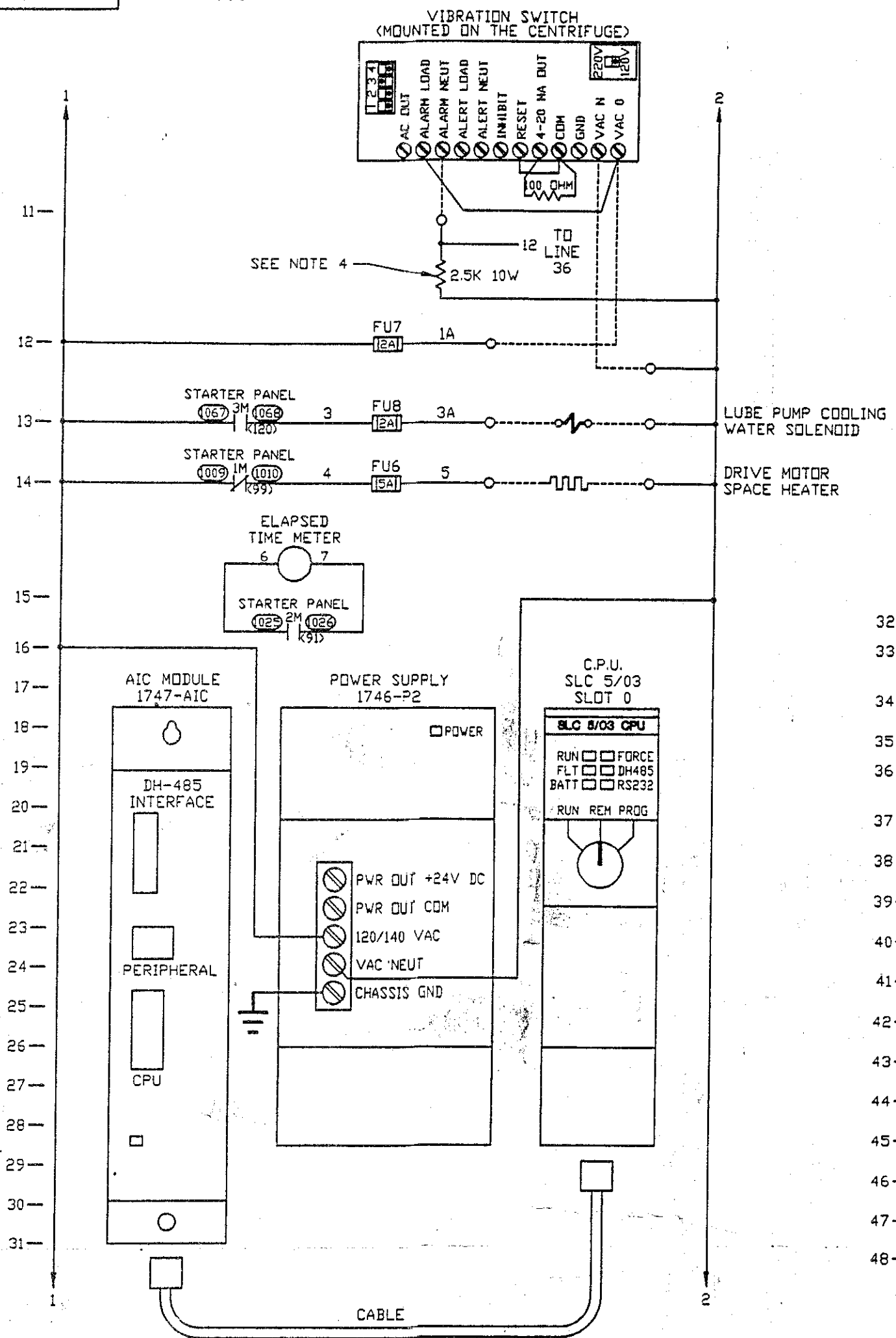
THIS PRINT REPRESENTS DESIGN AND ENGINEERING EFFORTS OF SHARPLES. IT IS LOANED IN CONFIDENCE AND MUST BE RETURNED ON DEMAND. ANY USE DETRIMENTAL TO THE INTERESTS OF SHARPLES IS PROHIBITED. IT MUST NOT BE LOANED, COPIED, OR REPRODUCED WITHOUT PERMISSION.

Sharples®
 A BUSINESS UNIT OF
 ALFA LAVAL SEPARATION INC.
 955 MEARN'S ROAD
 WARMINSTER, PA 18974
 U.S.A.

TITLE: **DS-706 SUPER-D-CANTER
 DETAILED INSTALLATION GUIDE
 L.H. DRIVE, L.H. LUBE PANEL
 IN-LINE BACKDRIVE**

DIMENSIONS IN INCHES (MILLIMETER DIMENSIONS IN BRACKETS)	
SCALE: NONE	DATE: 6-12-99
APPROVALS	
DRAWN: DAK	CHECKED: <i>[Signature]</i>
CHECKED: <i>[Signature]</i>	PRODUCT CODE: DS-706
S.O. 488869-72	DWG. NO. P-E2533.5S

INTRO:	32133			
REV.	DATE	DWN. NO.	BY	DESCRIPTION



NOTE:
 83 TO 88 - BLUE WIRES
 89 TO 103A - YELLOW WIRES
 108 TO 115 - YELLOW WIRES

- NOTES:
- 1) DOTTED WIRING BY OTHERS.
 - 2) ALL CIRCLED NUMBERS I.E. (1) ARE EQUIVALENT TERMINALS NUMBERS ON VENDORS PREWIRED EQUIPMENT.
 - 3) (Symbol) ILLUMINATED PUSHBUTTON/PILOT LIGHT
 - 4) THIS RESISTOR GETS HOT. MUST BE PLACED IN AN OPEN AREA.

- OPERATING SEQUENCE:
- 1) DEPRESS THE LUBE PUMP 'START' PUSHBUTTON TO START THE LUBE PUMP AND SATISFY THE OIL FLOW SWITCHES.
 - 2) DEPRESS THE 'STOP/RESET' PUSHBUTTON TO RESET THE FLOW SWITCHES AND RESET ANY FAULTS.
 - 3) DEPRESS 'START' PUSHBUTTON TO ENERGIZE THE CENTRIFUGE MOTOR. THE CENTRIFUGE 'OFF' LIGHT WILL GO OUT AND THE CENTRIFUGE 'STARTING/RUNNING' LIGHT WILL FLASH UNTIL THE DRIVE MOTOR IS UP TO SPEED AT WHICH POINT IT WILL ILLUMINATE SOLID.
 - 4) DEPRESS 'STOP/RESET' PUSHBUTTON TO DE-ENERGIZE THE CENTRIFUGE MOTOR. THE CENTRIFUGE 'STARTING/RUNNING' LIGHT WILL GO OUT AND THE 'STOP/RESET' LIGHT WILL FLASH UNTIL THE CENTRIFUGE HAS COME TO REST AT WHICH POINT IT WILL ILLUMINATE SOLID.
 - 5) TO TEST THE LIGHTS ON THE CONTROL PANEL, DEPRESS AND HOLD FOR FIVE SECONDS, THE 'ALARM SILENCE/LAMP TEST' BUTTON.

THIS PRINT CERTIFIED FOR:
 CUSTOMER: _____

THIS DRAWING IS MADE ON A CAD SYSTEM. DO NOT REVISE IT MANUALLY.

Sharples
 A BUSINESS UNIT OF ALFA LAVAL SEPARATION INC.
 855 MEARNS ROAD
 WARMINSTER, PA 18974 U.S.A.

LEGEND

- (Symbol) = TERMINAL BLOCK ON COMPONENTS.
- (Symbol) = TERMINAL BLOCK ON PRE-WIRED STARTER PANEL.
- (Symbol) = TERMINAL BLOCK ON PRE-WIRED D.C. CONTROL PANEL.
- (Symbol) = WIRING BY OTHERS.

WIRING DIAGRAM

TITLE: WIRING DIAGRAM

APPROVALS:

DATE: _____

CHECKED BY: _____

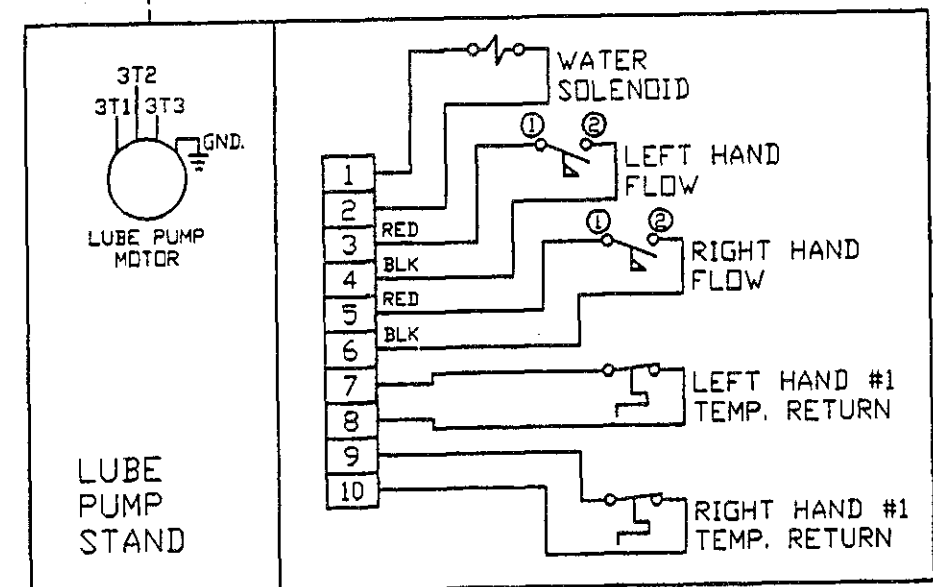
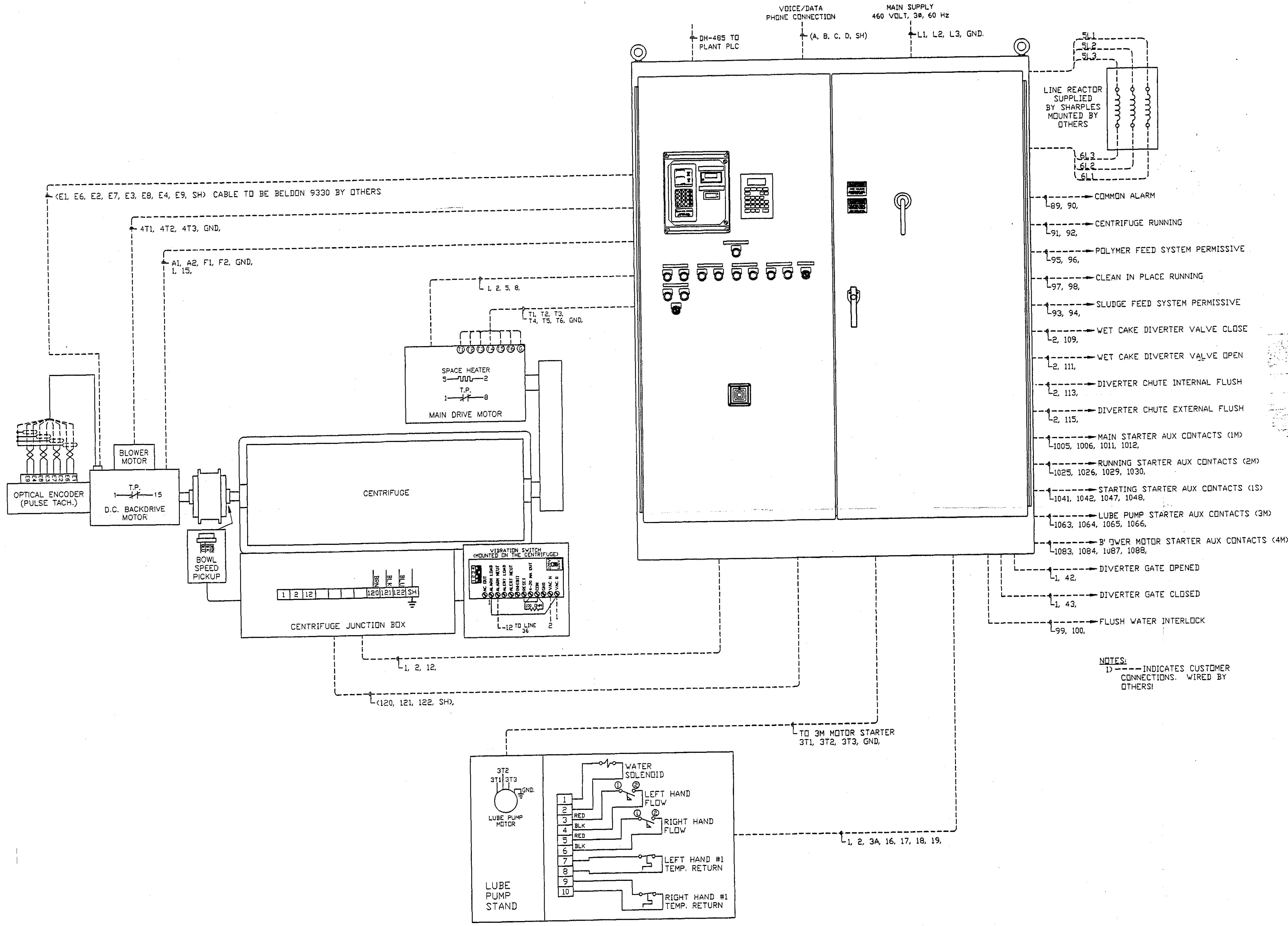
DESIGNED BY: _____

PRODUCT CODE: 02704 S.D. 486597

DWG. NO.: SHEET 2 OF 4

BILL OF MATERIAL: 6139.9110-19

P-E50005.44 S



CUSTOMER INTERLOCKS

INTRO.	
REV.	EWA NO.

THIS PRINT CERTIFIED FOR:
 CUSTOMER: _____
 ADDRESS: _____
 CUSTOMER ORDER NO.: _____
 SHARPLES ORDER NO.: _____
 CERTIFIED BY: _____ DATE: _____
 THIS COPY IS PART OF SUBMITTAL NO. _____

THIS DRAWING IS MADE ON A CAD SYSTEM. DO NOT REVISE IT MANUALLY.

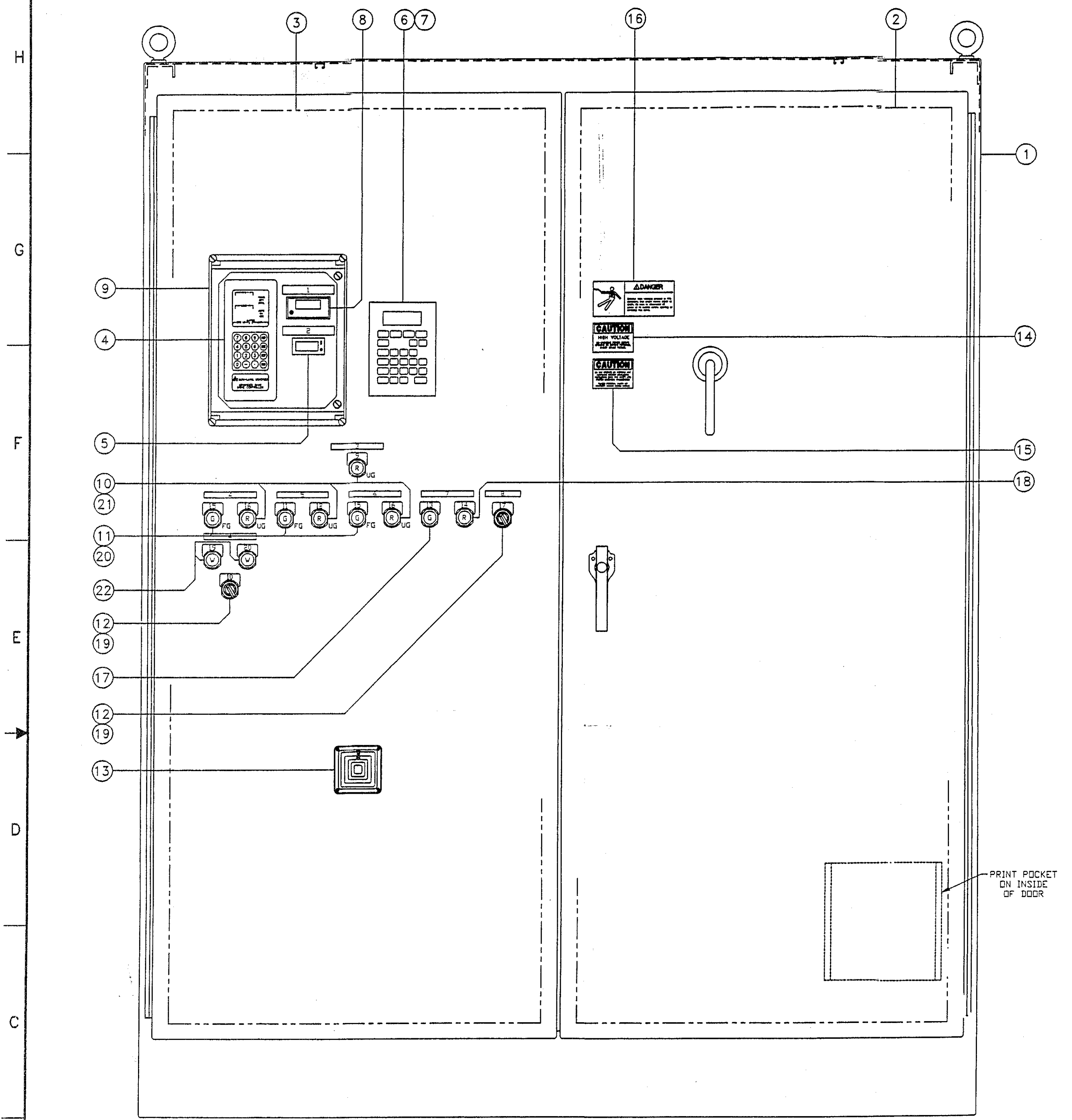
Sharples®
 A BUSINESS UNIT OF
 ALFA LAVAL SEPARATION INC.
 955 MEARNS ROAD
 WARMINSTER, PA 18974
 U.S.A.

ALL EQUIPMENT TO BE INSTALLED AND GROUNDED IN ACCORDANCE WITH THE REQUIREMENTS OF THE NATIONAL ELECTRICAL CODE AND LOCAL ELECTRICAL CODES.

LEGEND
 ⊗ = TERMINAL BLOCK ON COMPONENTS.
 ⊗⊗ = TERMINAL BLOCK ON PRE-WIRED STARTER PANEL.
 ⊗⊗⊗ = TERMINAL BLOCK ON PRE-WIRED D.C. CONTROL PANEL.
 --- = WIRING BY OTHERS.

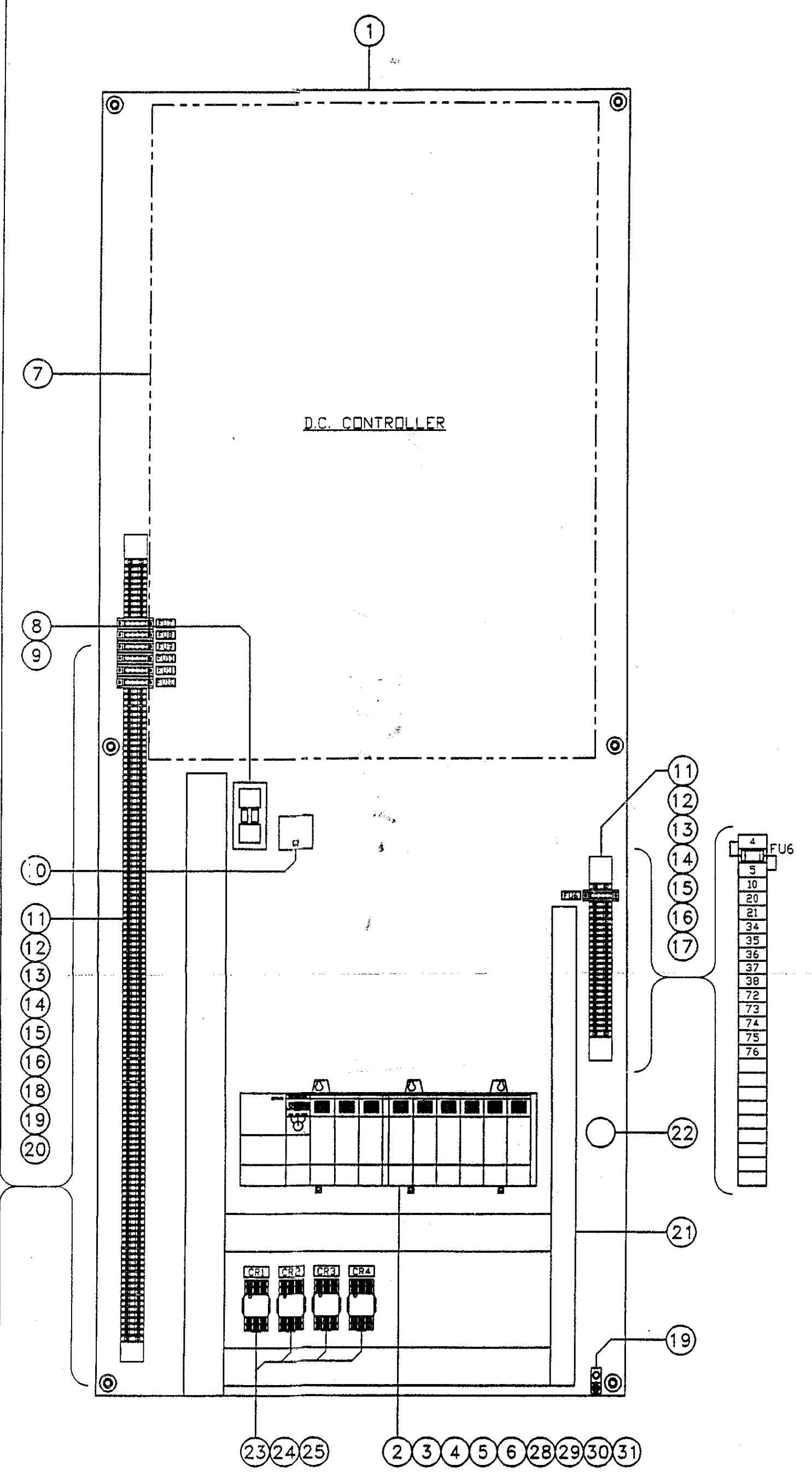
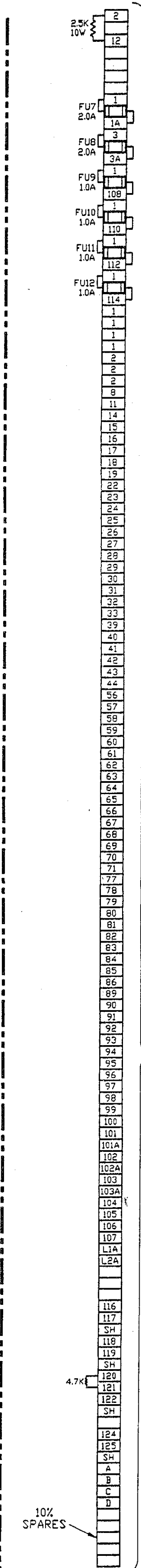
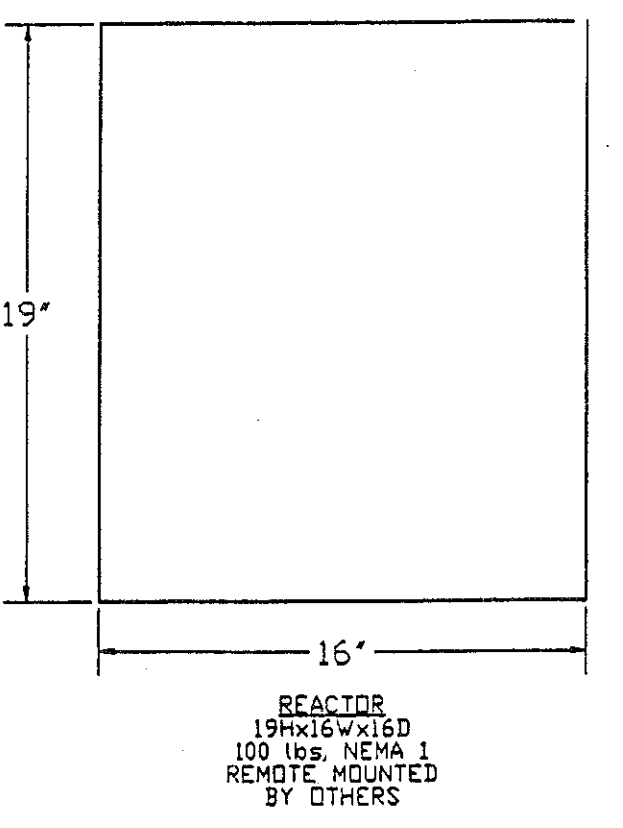
THIS PRINT REPRESENTS DESIGN AND ENGINEERING EFFORTS OF ALFA-LAVAL. IT IS LOANED IN CONFIDENCE AND MUST BE RETURNED ON DEMAND. ANY USE DETRIMENTAL TO THE INTERESTS OF SHARPLES, INC. IS PROHIBITED. IT MUST NOT BE LOANED, COPIED, OR REPRODUCED WITHOUT PERMISSION.

INTERCONNECT DIAGRAM
 DIMENSIONS IN INCHES (MILLIMETER DIMENSIONS IN BRACKETS)
 SCALE: _____ DATE: _____ APPROVALS: _____
 SIMILAR TO: P-E50018.135
 FIRST USED: BATTLE CREEK
 BILL OF MATERIAL: 6139.9110-19
 DWG. NO.: SHEET 3 OF 4
 P-E50005.44 S

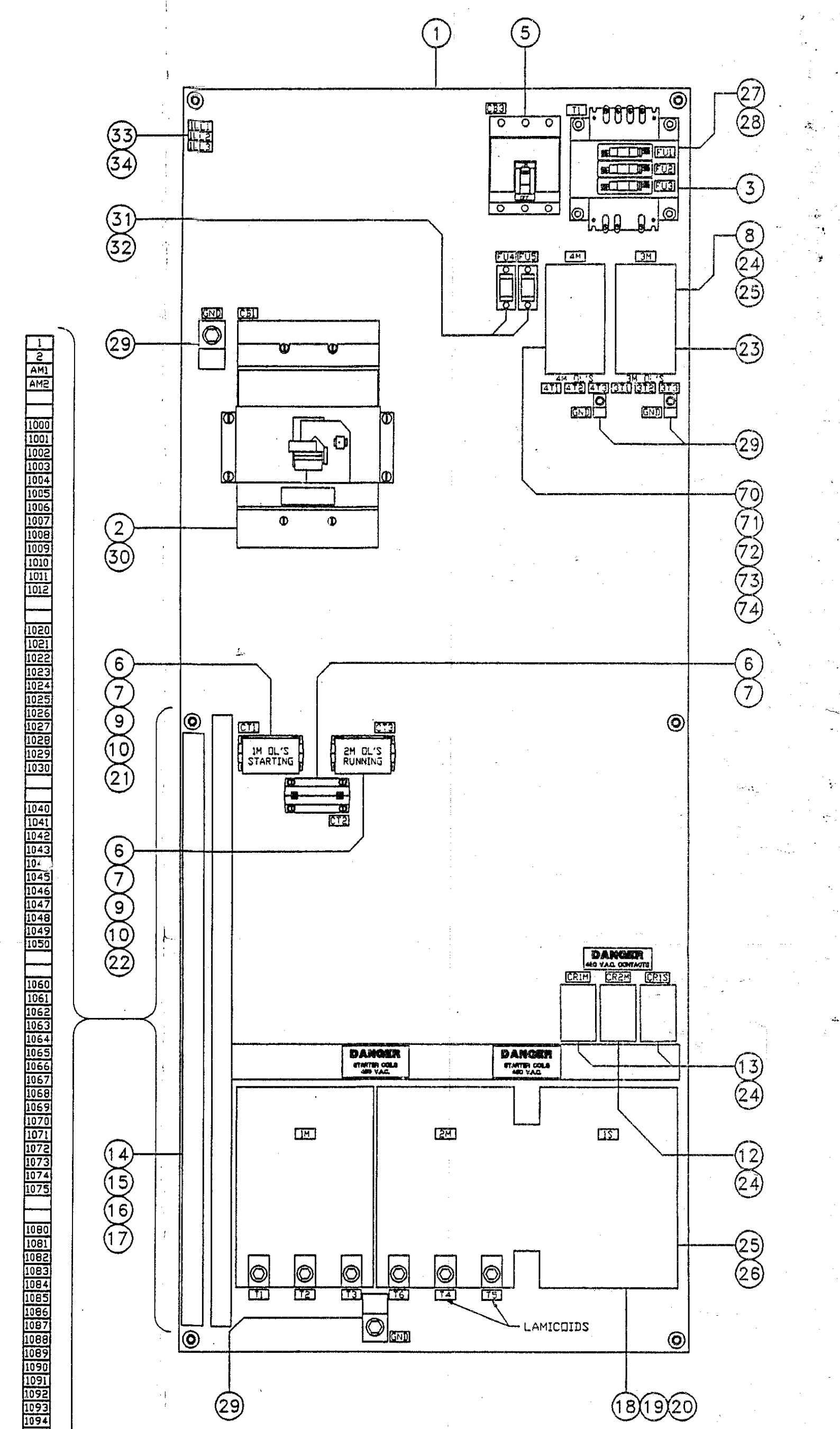


CONTROL PANEL DOOR LAYOUT
 90H x 72W x 24D
 SEE BILL OF MATERIAL 6139.9110-19
 FOR PART DESCRIPTION

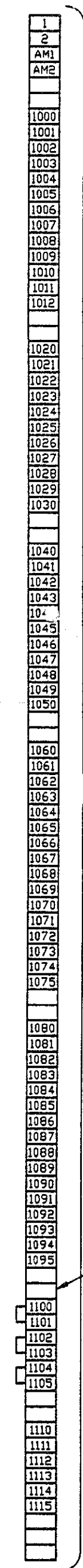
- LAMICCOIDS:**
 1 - DRIVE MOTOR AMPS.
 2 - ELAPSED TIME METER
 3 - CONTROL SYSTEM ALARMS
 4 - LUBE PUMP
 5 - CENTRIFUGE
 6 - CLEAN IN PLACE
 7 - BACKDRIVE
 8 - FLUSH WATER
 9 - ALARM SILENCE/
 LAMP TEST -
 COMMON ALARM
 10 - DIVERTER GATE
- LEGENDS:**
 11 - START - STARTING/RUNNING
 12 - STOP/ALARM RESET - OFF
 13 - RUNNING
 14 - OFF
 15 - START - RUNNING
 16 - STOP - OFF
 17 - HAND/OFF/AUTO - ON
 18 - OPEN/CLOSE/AUTO - AUTO
 19 - OPEN
 20 - CLOSED
- FG - FULL GUARD
 UG - UNGUARDED



D.C. CONTROL SUB PANEL LAYOUT
 SEE BILL OF MATERIAL 6148.0291-15
 FOR PART DESCRIPTION



STARTER SUB PANEL LAYOUT
 SEE BILL OF MATERIAL 6148.0434-10
 FOR PART DESCRIPTION



<p>THIS PRINT CERTIFIED FOR: CUSTOMER: _____</p> <p>ADDRESS: _____</p> <p>CUSTOMER ORDER NO.: _____</p> <p>SHARPLES ORDER NO.: _____</p> <p>CERTIFIED BY: _____ DATE: _____</p> <p>THIS COPY IS PART OF SUBMITTAL NO. _____</p>	<p>THIS DRAWING IS MADE ON A CAD SYSTEM. DO NOT REVISE IT MANUALLY.</p> <p>Sharples® A BUSINESS UNIT OF ALFA LAVAL SEPARATION INC. 955 MEARNS ROAD WARMINSTER, PA 18974 U.S.A.</p>	<p>ALL EQUIPMENT TO BE INSTALLED AND GROUNDED IN ACCORDANCE WITH THE REQUIREMENTS OF THE NATIONAL ELECTRICAL CODE AND LOCAL ELECTRICAL CODES.</p> <p>LEGEND (X) = TERMINAL BLOCK ON COMPONENTS. (XXX) = TERMINAL BLOCK ON PRE-WIRED STARTER PANEL. (XXX) = TERMINAL BLOCK ON PRE-WIRED D.C. CONTROL PANEL. --- = WIRING BY OTHERS.</p>	<p>ENCLOSURE LAYOUT</p> <p>TITLE: _____</p> <p>SIMILAR TO: P-E50018.135</p> <p>FIRST USED: BATTLE CREEK</p> <p>BILL OF MATERIAL: 6139.9110-19</p>	<p>THIS PRINT REPRESENTS DESIGN AND ENGINEERING EFFORTS OF ALFA-LAVAL. IT IS LOANED IN CONFIDENCE AND MUST BE RETURNED ON DEMAND. ANY USE DETRIMENTAL TO THE INTERESTS OF SHARPLES, INC. IS PROHIBITED. IT MUST NOT BE LOANED, COPIED, OR REPRODUCED WITHOUT PERMISSION.</p> <p>DIMENSIONS IN INCHES (MILLIMETER DIMENSIONS IN BRACKETS)</p> <p>SCALE: _____ DATE: _____ APPROVALS: _____</p> <p>PRODUCT CODE: 05706 E.O. 486869-72</p> <p>DWG. NO.: SHEET 4 OF 4 P-E50005.44 S</p>