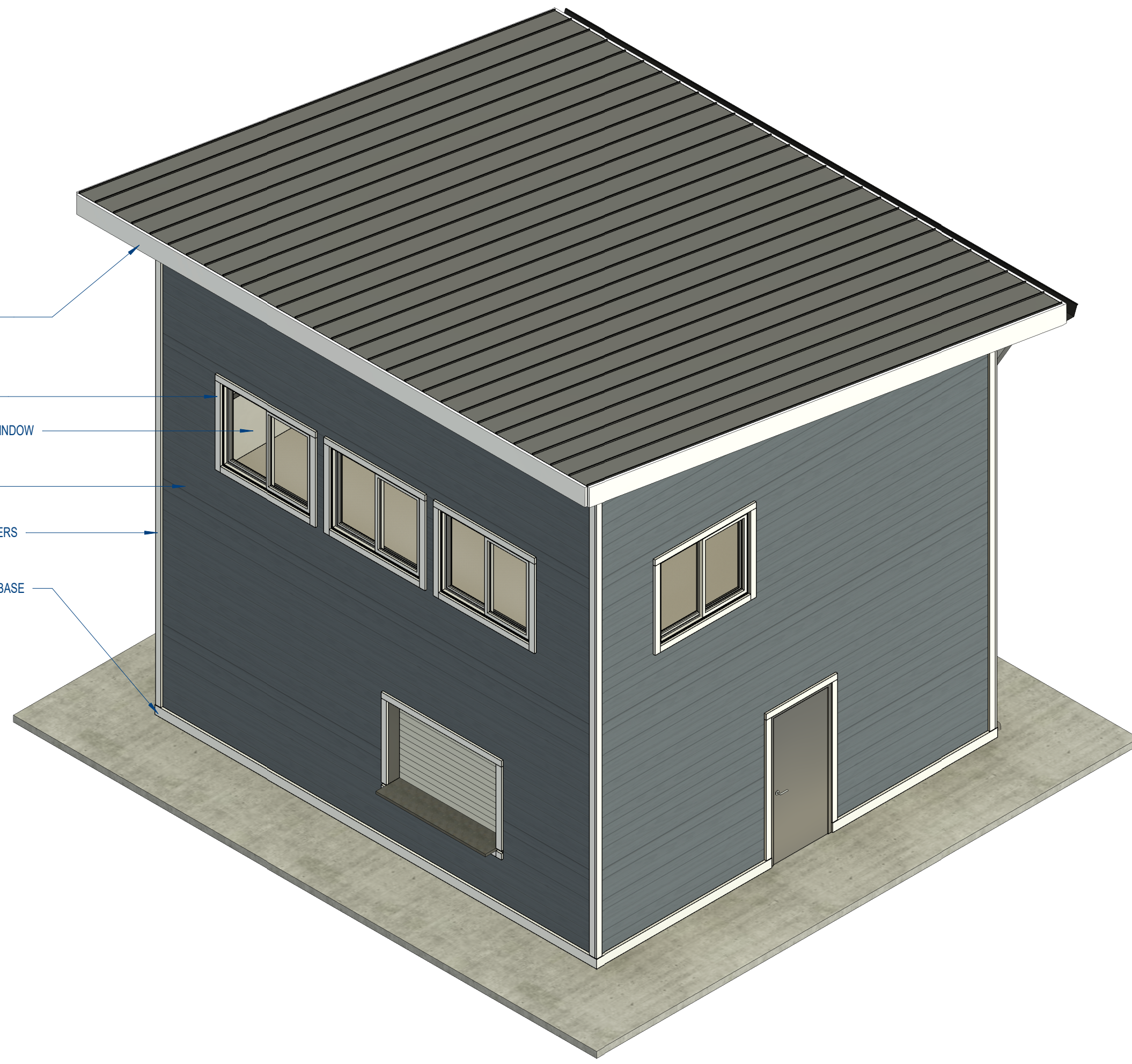


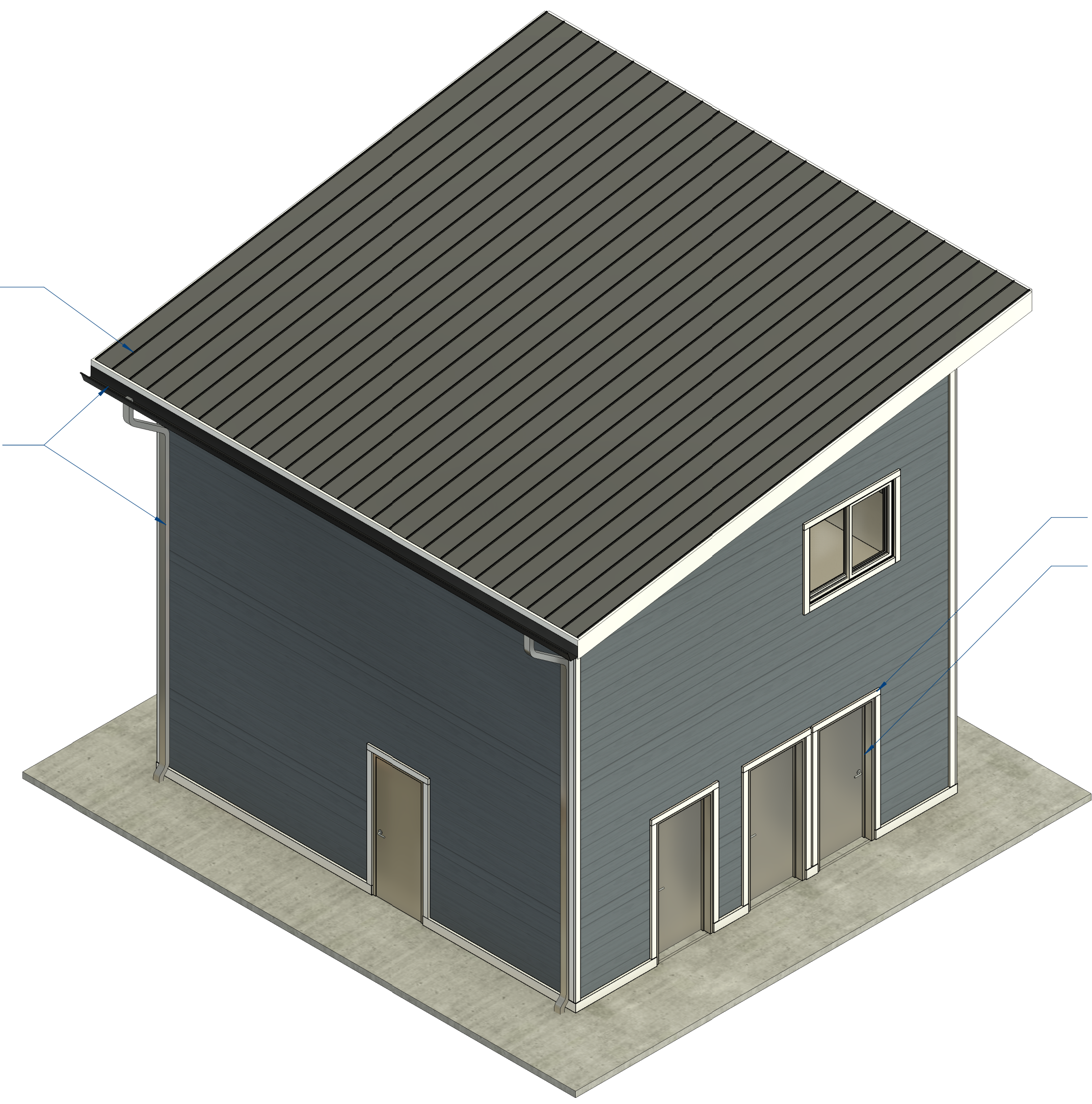
- HARDIE FASCIA TRIM BOARD: 5/4 SMOOTH - PRIMED FOR PAINT
- HARDIE TRIM BOARDS: 5/4 SMOOTH - PRIMED FOR PAINT - TYP. AT WINDOW SURROUNDS
- PELLA 250 SERIES VINYL SLIDING WINDOW
- HARDIE LAP SIDING: SMOOTH - PRIMED FOR PAINT
- HARDIE TRIM BOARD: 5/4 SMOOTH - PRIMED FOR PAINT - TYP. AT CORNERS
- HARDIE TRIM BOARD: 5/4 SMOOTH - PRIMED FOR PAINT - TYP. AT WALL BASE



**A21** 3D AXON VIEW 01  
NOT TO SCALE

METAL ROOF

ALUMINUM GUTTER AND DOWNSPOUT



- HARDIE TRIM BOARD: 5/4 SMOOTH - PRIMED FOR PAINT - TYP. AT DOOR SURROUNDS
- HOLLOW METAL DOOR - SEE DOOR SCHEDULE FOR FINISHES

**A11** 3D AXON VIEW 02  
NOT TO SCALE

NOTE: FINAL COLOR AND FINISH SELECTIONS TO BE SELECTED BY OWNER AND ARCHITECT FROM MANUFACTURER'S FULL RANGE OF STANDARD COLORS.



CONSTRUCTION DOCUMENTS FOR  
**CLINTON HS SOFTBALL CONCESSION BLDG**  
CLINTON HIGH SCHOOL, ANDERSON COUNTY, TN



NO.	ISSUED BY	DATE
2	CLARIFICATIONS	2024-07-22

THIS DRAWING IS THE PROPERTY OF DESIGN INNOVATION ARCHITECTS, INC. AND IS NOT TO BE REPRODUCED OR COPIED IN WHOLE OR IN PART WITHOUT AUTHORIZATION FROM DESIGN INNOVATION ARCHITECTS, INC. IT IS TO BE USED FOR THE PROJECT AND SITE SPECIFICALLY IDENTIFIED HEREIN, AND IS NOT TO BE USED ON ANY OTHER PROJECT. IT IS TO BE RETURNED UPON REQUEST. DO NOT SCALE. DRAWINGS, WRITTEN DIMENSIONS TAKE PRECEDENCE. ALL DRAWINGS AND SESSIONS SHOWN ON THESE DRAWINGS ARE COPYRIGHT © OF DESIGN INNOVATION ARCHITECTS, INC.

SHEET DESCRIPTION  
3D VIEWS

**AG001**

PROJECT DATE	PROJECT NUMBER
2024-07-22	22021