

**METAL ROOF BASIS OF DESIGN**

NOT TO SCALE

**STANDING-SEAM METAL ROOF PANELS:**

- A. GENERAL:** PROVIDE FACTORY-FORMED METAL ROOF PANELS DESIGNED TO BE INSTALLED BY LAPPING EDGES OF ADJACENT PANELS AND MECHANICALLY ATTACHING PANELS TO SUPPORTS USING UNEXPOSED FASTENERS. INCLUDE ACCESSORIES REQUIRED FOR WEATHERTIGHT INSTALLATION.
- B. UNEXPOSED-FASTENER FLAT STANDING SEAM METAL ROOF PANELS:** BASIS-OF-DESIGN SNAP-CLAD BY PAC-CLAD, PETERSEN ALUMINUM CORPORATION, ACWORTH, GA. 800-272-4482; WWW.PAC-CLAD.COM.
  - 1. METALLIC-COATED STEEL SHEET: Z275 GALVANIZED (ZINC COATED) SHEET STEEL CONFORMING TO ASTM A653M STRUCTURAL QUALITY GRADE 230. PRE-PAINTED BY THE COIL-COATING PROCESS TO COMPLY WITH ASTM A 755/A 755M.
    - a. THICKNESS: 24 GAUGE.
    - b. EXTERIOR FINISH: KYNAR 500 OR HYLAR 5000 FLUOROCARBON COATING WITH A TOP-SIDE FILM THICKNESS OF 0.70 TO 0.90 MIL. OVER A 0.25 TO 0.3 MIL. PRIME COAT TO PROVIDE A TOTAL DRY FILM THICKNESS OF 0.95 TO 1.25 MIL. TO MEET AAMA R21. BOTTOM SIDE SHALL BE COATED WITH A PRIMER WITH A DRY FILM THICKNESS OF 0.25 MIL. FINISH SHALL CONFORM TO ALL TESTS FOR ADHESIONS, FLEXIBILITY AND LONGEVITY AS SPECIFIED BY KYNAR 500 OR HYLAR 5000 FINISH SUPPLIER.
    - c. COLOR: AS SELECTED BY ARCHITECT FROM MANUFACTURER'S FULL RANGE.
  - 2. PANEL COVERAGE: AS INDICATED ON THE DRAWINGS.
  - 3. PANEL HEIGHT: AS INDICATED ON THE DRAWINGS.
- C. SUBJECT TO COMPLIANCE WITH REQUIREMENTS, MANUFACTURERS OFFERING STANDING-SEAM METAL ROOF PANELS AND RELATED PRODUCTS THAT MAY BE INCORPORATED INTO THE WORK INCLUDE, BUT ARE NOT LIMITED TO, THE FOLLOWING:**
  - 1. METAL ROOFING SYSTEMS, INC., MODEL MRS SYSTEM 2000; WWW.METALROOFINGSYSTEMS.BIZ

**UNDERLAYMENT MATERIALS:**

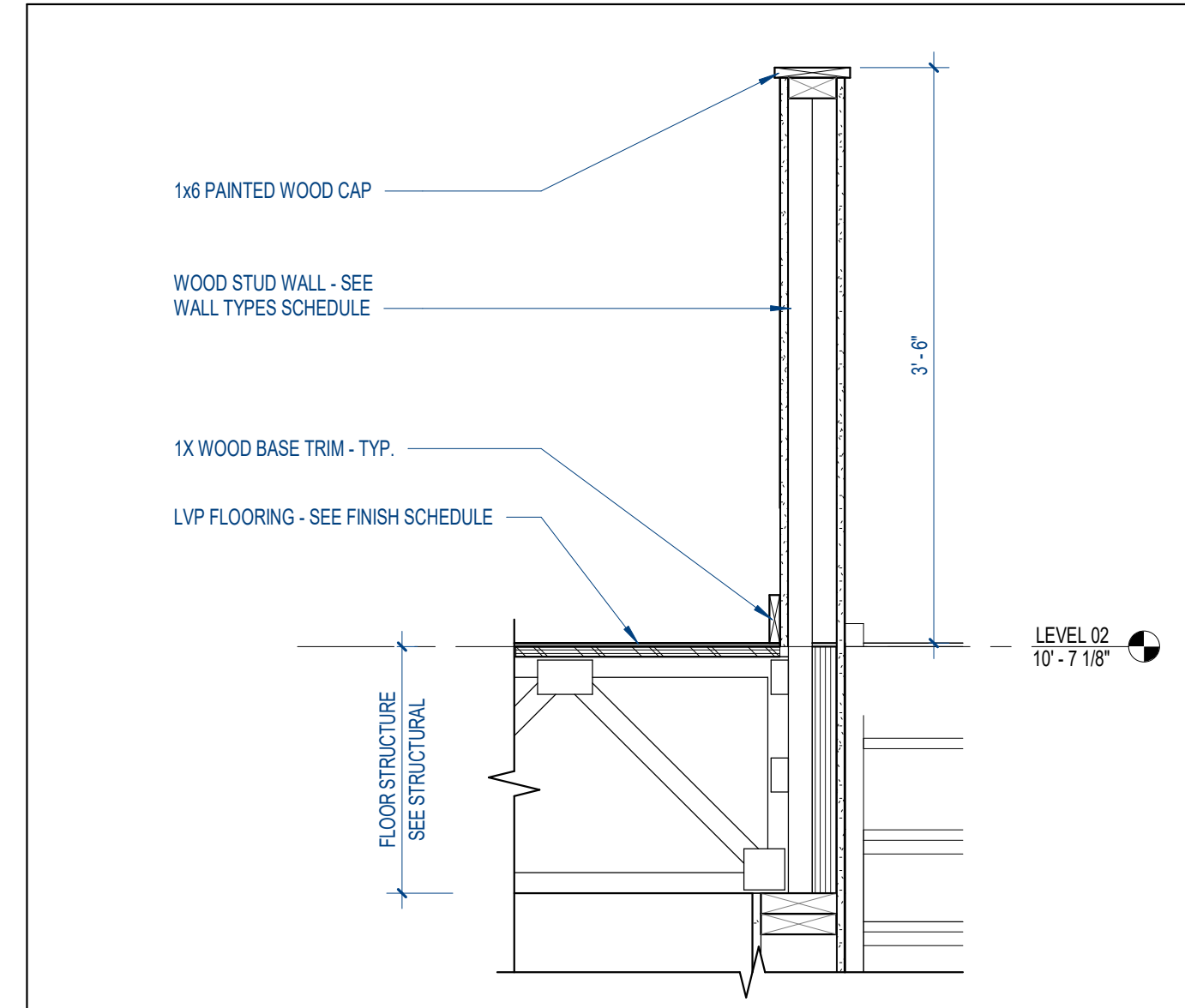
- A. SUBSTRATE** SHALL BE PLYWOOD.
- B. SELF-ADHERING, HIGH-TEMPERATURE UNDERLAYMENT:** ON ALL SURFACES TO BE COVERED WITH ROOFING MATERIAL, FURNISH AND INSTALL A 40 MIL PEEL AND STICK MEMBRANE, REQUIRED AS OUTLINED BY METAL PANEL MANUFACTURER. MEMBRANE TO BE A MINIMUM OF 40 MIL THICKNESS, SMOOTH, NON-GRANULAR, HIGH TEMPERATURE. BASIS OF DESIGN: CARLISLE WIP 300 HT HIGH TEMPERATURE PROTECTION SELF ADHERING ROOFING UNDERLAYMENT. OTHER ACCEPTABLE MANUFACTURERS INCLUDE:
  - 1. W. R. GRACE "ICE & WATER SHIELD"
  - 2. INTERWRAP TITANIUM PSU-30
  - 3. TAMKO TIV TILE AND METAL UNDERLAYMENT
- C. UNDERLAYMENT SHALL BE LAID IN HORIZONTAL LAYERS WITH JOINTS LAPPED TOWARD THE EAVES A MINIMUM OF 6. AND WELL SECURED ALONG LAPS AND AT ENDS AS NECESSARY TO PROPERLY HOLD THE FELT IN PLACE. ALL UNDERLAYMENT SHALL BE PRESERVED UNBROKEN AND WHOLE.**
- D. PEEL AND STICK UNDERLAYMENT SHALL LAP ALL HIPS AND RIDGES AT LEAST 12 TO FORM DOUBLE THICKNESS AND SHALL BE LAPPED 6 OVER THE METAL OF ANY VALLEY OR BUILT-IN GUTTERS AND SHALL BE INSTALLED AS REQUIRED BY THE STANDING SEAM PANEL MANUFACTURER TO ATTAIN THE DESIRED 20 YEAR WEATHERTIGHTNESS WARRANTY.**

**MISCELLANEOUS MATERIALS:**

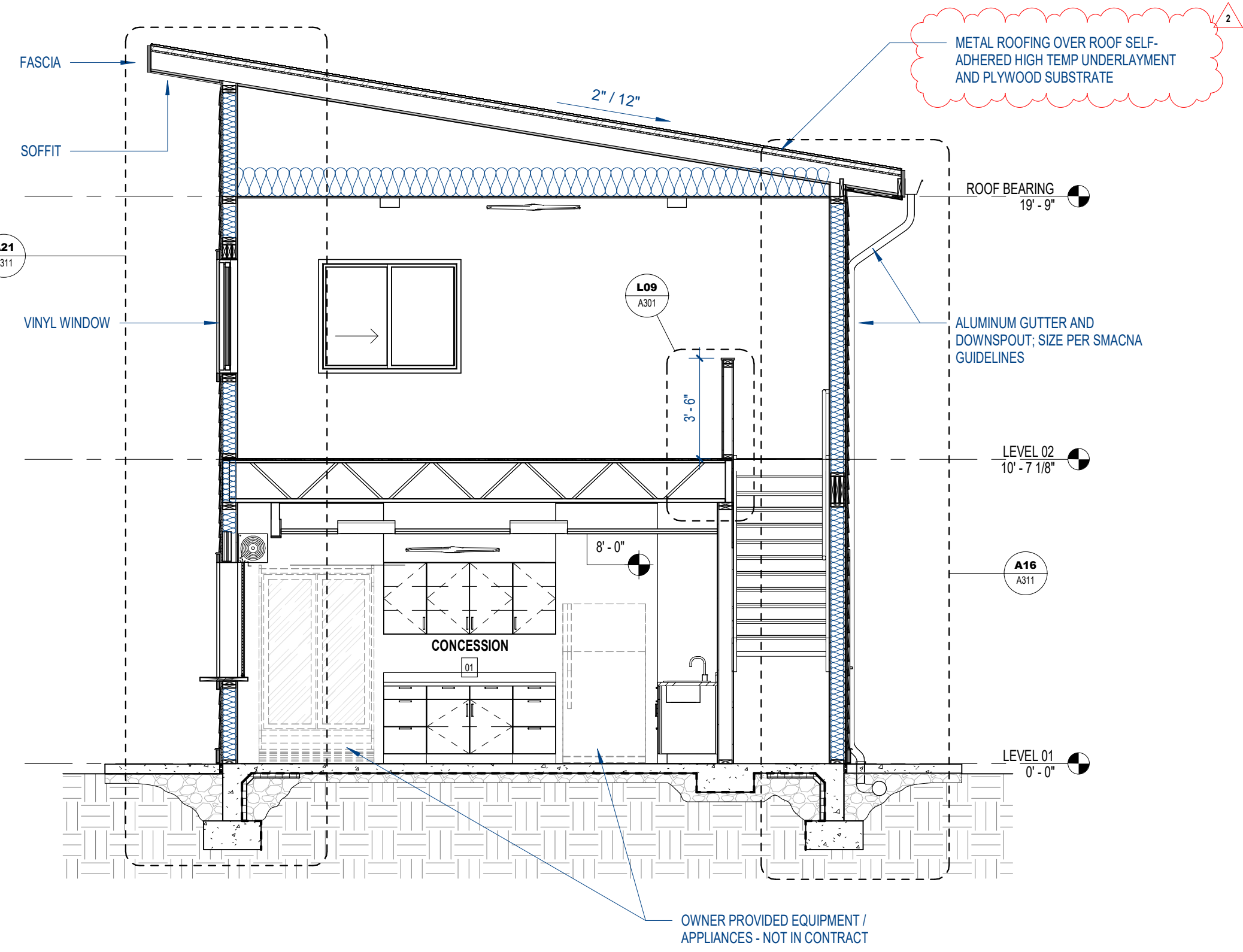
- A. PANEL ACCESSORIES:** PROVIDE COMPONENTS REQUIRED FOR COMPLETE, WEATHERTIGHT PANEL SYSTEM INCLUDING TRIM, COPINGS, FASCIAE, MILLIONS, SILLS, CORNER UNITS, CLIPS, FLASHINGS, SEALANTS, GASKETS, FILLERS, CLOSURE STRIPS, AND SIMILAR ITEMS. MATCH MATERIAL AND FINISH OF METAL PANELS UNLESS OTHERWISE INDICATED.
  - 1. CLOSURES: PROVIDE CLOSURES AT EAVES AND RIDGES, FABRICATED OF THE SAME METAL PANELS.
  - 2. BACKING PLATES: PROVIDE METAL BACKING PLATES AT METAL PANEL END SPLICES, FABRICATED FROM MATERIAL RECOMMENDED BY MANUFACTURER.
  - 3. CLOSURE STRIPS: CLOSE-CELL, EXPANDED, CELLULAR, RUBBER OR CROSS-LINKED, POLYOLEFIN-FOAM OR CLOSED-CELL LAMINATED POLYETHYLENE; MINIMUM 1-INCH-THICK, FLEXIBLE CLOSURE STRIPS; CUT OR PREMOLDED TO MATCH METAL PANEL PROFILE. PROVIDE CLOSURE STRIPS WHERE INDICATED OR NECESSARY TO ENSURE WEATHERTIGHT CONSTRUCTION.
- B. FLASHING AND TRIM:** PROVIDE FLASHING AND TRIM FORMED FROM THE SAME MATERIAL AS METAL PANELS AS REQUIRED TO SEAL AGAINST WEATHER AND TO PROVIDE FINISHED APPEARANCE. LOCATIONS INCLUDE, BUT ARE NOT LIMITED TO: EAVES, RAKES, CORNERS, BASES, FRAMED OPENINGS, RIDGES, FASCIAE, AND FILLERS. FINISH FLASHING AND TRIM WITH SAME FINISH SYSTEM AS ADJACENT METAL PANELS.
- C. PANEL SEALANTS:** PROVIDE SEALANT TYPES RECOMMENDED BY MANUFACTURER THAT ARE COMPATIBLE WITH PANEL MATERIALS, ARE NON-STAINING, AND DO NOT DAMAGE PANEL FINISH.
  - 1. SEALANT TAPE: PRESSURE-SENSITIVE, 100 PERCENT SOLIDS, GRAY POLYISOBUTYLENE COMPOUND SEALANT TAPE WITH RELEASE-PAPER BACKING. PROVIDE PERMANENTLY ELASTIC, NON-SAG, NONTXIC, NON-STAINING TAPE 1/2 INCH (13 MM) WIDE AND 1/8 INCH (3 MM) THICK.
  - 2. JOINT SEALANT: ASTM C 820; ELASTOMERIC POLYURETHANE OR SILICONE SEALANT, OF TYPE, GRADE, CLASS, AND USE CLASSIFICATIONS REQUIRED TO SEAL JOINTS IN METAL PANELS AND REMAIN WEATHERTIGHT, AND AS RECOMMENDED IN WRITING BY METAL PANEL MANUFACTURER.
  - 3. BUTYL-RUBBER-BASED, SOLVENT-RELEASE SEALANT: ASTM C 1311.

**KEYED NOTES**

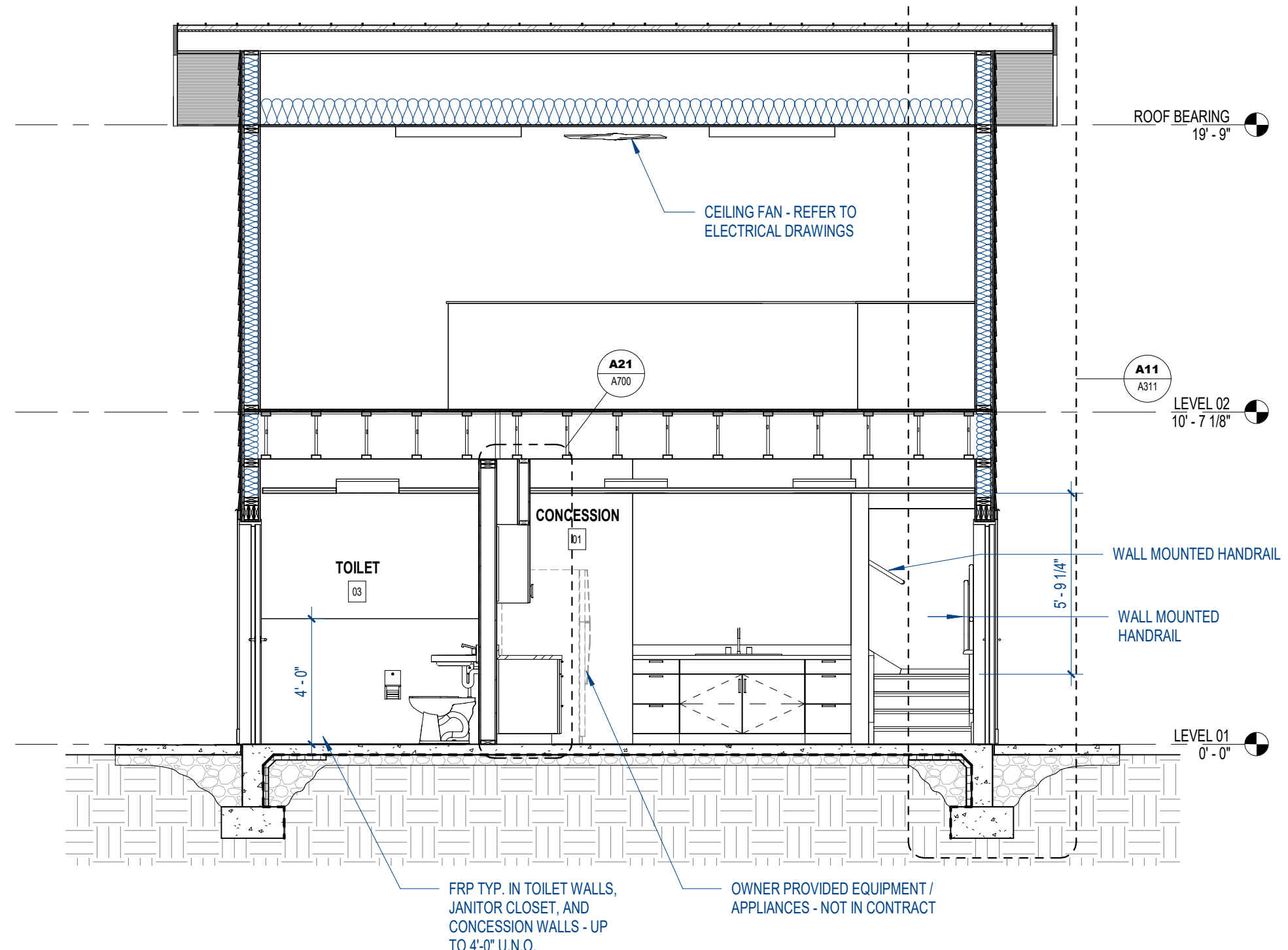
- 01 HARDIE LAP SIDING: SMOOTH - PRIMED FOR PAINT
- 02 HARDIE TRIM BOARDS: 5/4 SMOOTH - PRIMED FOR PAINT - TYP. AT WINDOW SURROUNDS
- 03 PELLA 250 SERIES VINYL SLIDING WINDOW
- 04 HARDIE SOFFIT PANELS - VENTED, SMOOTH, PRIMED FOR PAINT
- 05 HARDIE FASCIA TRIM BOARD: 5/4 SMOOTH - PRIMED FOR PAINT
- 06 WALL PENETRATION: SEE A6003 FOR SIDING TREATMENT AND FLASHING. REFER TO MECHANICAL DRAWINGS.
- 07 DRIP EDGE FLASHING: MATCH METAL ROOFING IN COLOR AND FINISH
- 08 METAL ROOF: COLOR TO BE SELECTED BY OWNER AND ARCHITECT FROM MANUFACTURER'S STANDARD RANGE



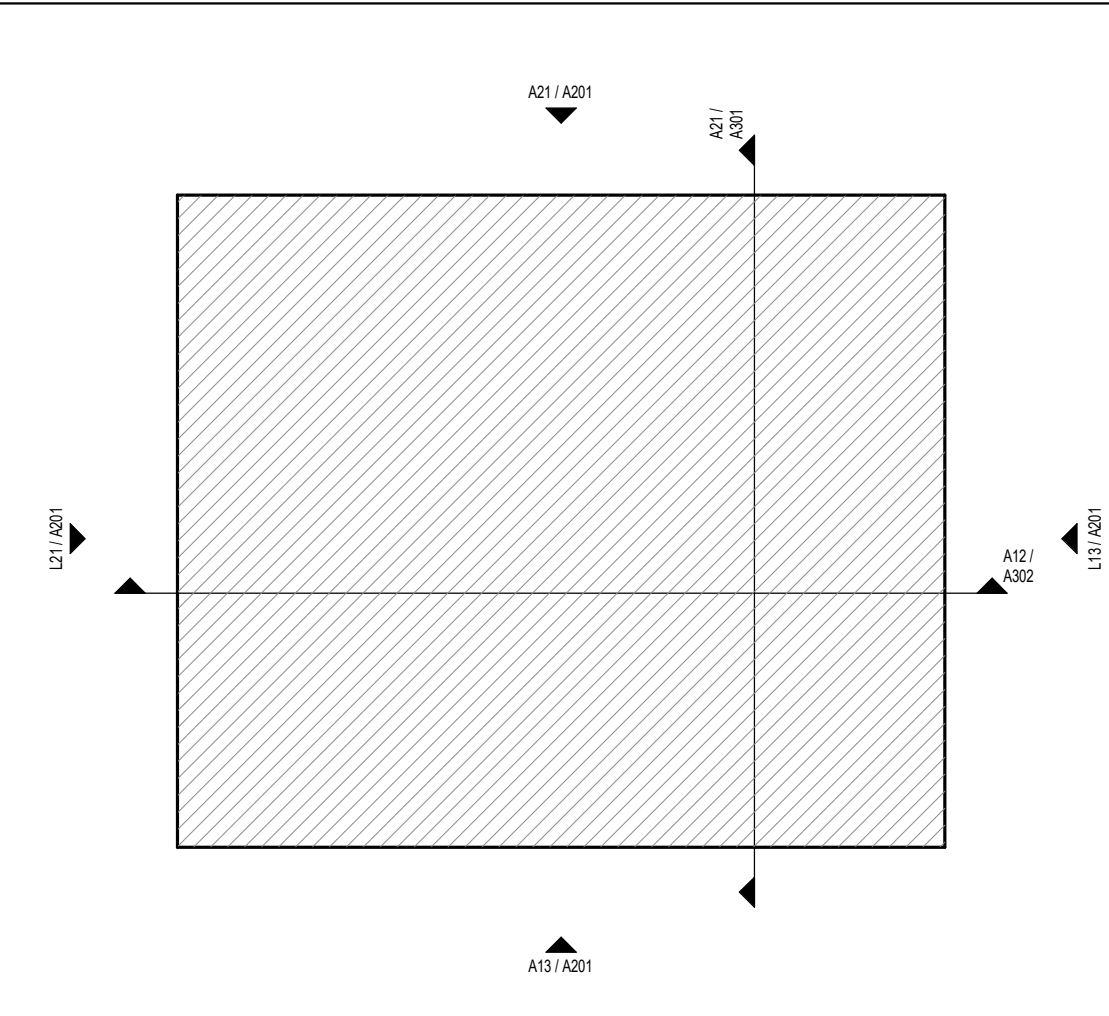
**L09 KNEE WALL DETAIL**  
1" = 1'-0"



**A21 BUILDING SECTION**  
1/4" = 1'-0"



**A12 BUILDING SECTION**  
1/4" = 1'-0"



**A04 KEY PLAN**  
NOT TO SCALE

**DIA**  
Design Innovation  
ARCHITECTS + INTERIORS + PLANNING  
402 S. Gay Street, Suite 201, Knoxville, TN 37902  
ph 865.637.8540 | fx 865.544.3940  
www.dia-arch.com



CONSTRUCTION DOCUMENTS FOR  
**CLINTON HS SOFTBALL CONCESSION BLDG**  
CLINTON HIGH SCHOOL, ANDERSON COUNTY, TN



NO.	ISSUED BY	DATE
2	CLARIFICATIONS	2024-07-22

THIS DRAWING IS THE PROPERTY OF DESIGN INNOVATION ARCHITECTS, INC. AND IS NOT TO BE REPRODUCED OR COPIED IN WHOLE OR IN PART WITHOUT AUTHORIZATION FROM DESIGN INNOVATION ARCHITECTS, INC. IT IS TO BE USED FOR THE PROJECT AND SITE SPECIFICALLY IDENTIFIED HEREIN, AND IS NOT TO BE USED ON ANY OTHER PROJECT. IT IS TO BE RETURNED UPON REQUEST. DO NOT SCALE. DRAWINGS, WRITTEN DIMENSIONS TAKE PRECEDENCE. ALL DRAWINGS AND DESIGN SHOWN ON THESE DRAWINGS ARE COPYRIGHT © OF DESIGN INNOVATION ARCHITECTS, INC.

SHEET DESCRIPTION  
**BUILDING SECTIONS**

**A301**

PROJECT DATE	PROJECT NUMBER
2024-07-22	22021