

This drawing is the property of Matrix Engineering, Inc., and is not to be reproduced or copied in whole or in part. It is only to be used for the project and site specifically identified herein and is not to be used on any other project.

GENERAL NOTES

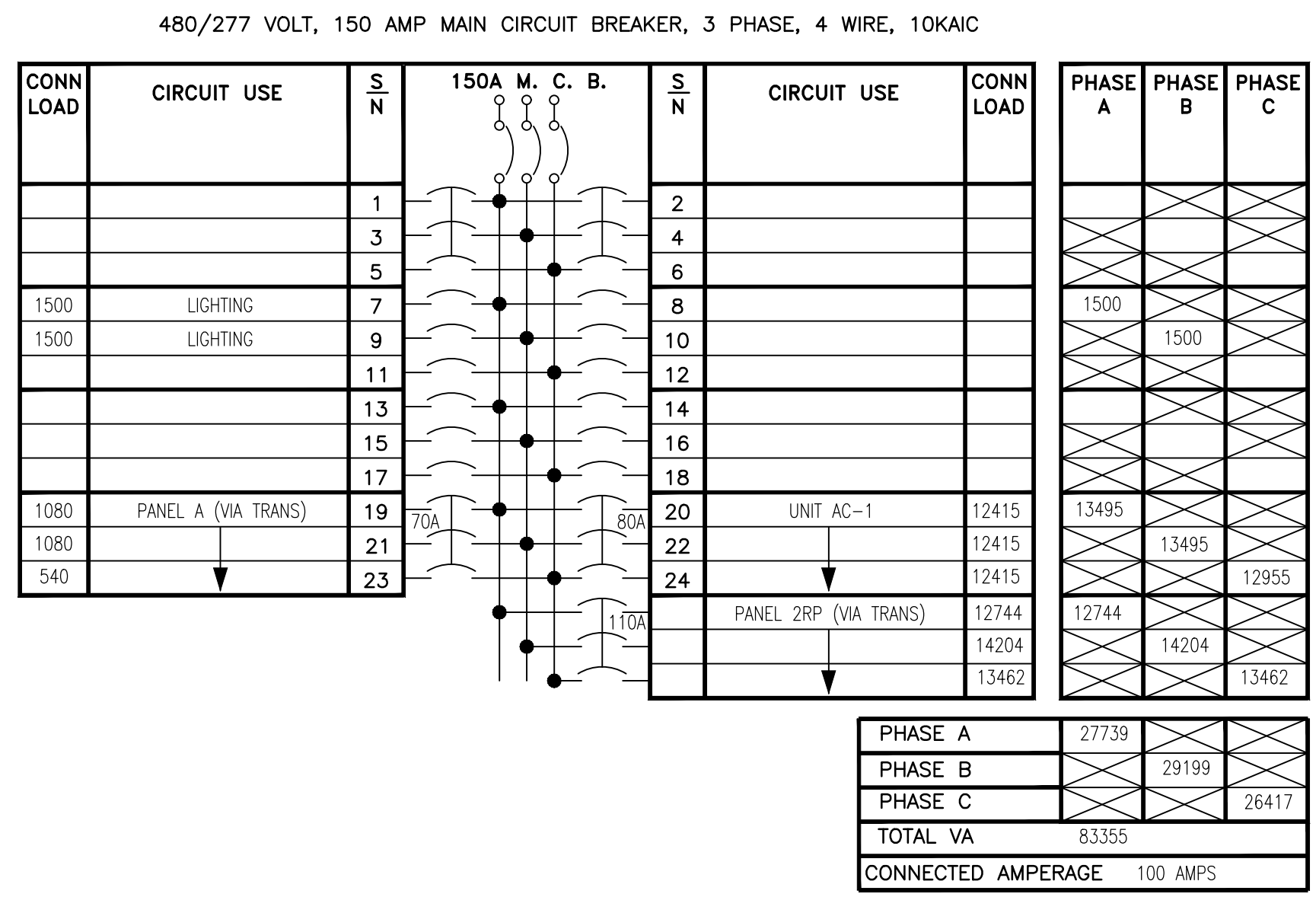
- ALL ELECTRICAL WORK SHALL BE EXECUTED IN ACCORDANCE WITH THE 2011 VERSION OF THE NATIONAL ELECTRICAL CODE AND ALL OTHER LOCAL CODES, LAWS, AND ORDINANCES. WHERE ONE CODE DIFFERS FROM ANOTHER, THE STRICTER OF THE TWO SHALL APPLY.
- IT IS THE DUTY OF THE ELECTRICAL CONTRACTOR TO BE FAMILIAR WITH THE CONSTRUCTION DETAILS OF THE BUILDING. THE CONTRACTOR SHALL COORDINATE THE INSTALLATION OF THE ELECTRICAL SYSTEM WITH ALL OTHER TRADES AND SHALL COMPLETE THE ELECTRICAL INSTALLATION AS SOON AS CONDITIONS WILL ALLOW.
- ALL WORK SHALL BE DONE IN A NEAT, QUALITY MANNER WITH ALL WIRING AND RACEWAYS CONCEALED.
- ALL ELECTRICAL DRAWINGS ARE GENERALLY DIAGRAMMATIC IN NATURE. THE ELECTRICAL CONTRACTOR SHALL CLOSELY COORDINATE ALL ELECTRICAL WORK WITH ALL OTHER TRADES WORKING ON THE PREMISES.
- WHERE CONDUIT AND WIRING HAS NOT BEEN SHOWN ON THE DRAWINGS THE ARRANGEMENT AND ROUTING OF LIGHTING AND RECEPTACLE BRANCH CIRCUITS WILL BE AT THE CONTRACTOR'S DISCRETION IN ACCORDANCE WITH GENERALLY ACCEPTED GOOD PRACTICE, N.E.C. REQUIREMENTS AND THE FOLLOWING LIMITATIONS:
 - SIZE BRANCH CIRCUIT CONDUCTORS WITHIN THE FOLLOWING MAXIMUM LENGTH LIMITS: (MEASURE TO THE CENTER OF THE LOAD FOR LIGHTING CIRCUITS AND THE MOST REMOTE OUTLET FOR RECEPTACLE CIRCUITS)

	#12	#10	#8	#6
120V., 20A.	85'	110'	165'	270'
277V., 20A.	160'	250'	390'	600'
- THIS PROJECT TO MEET NFPA 72 AND ADA REQUIREMENTS REGARDING MOUNTING HEIGHTS OF ELECTRICAL DEVICES.
- RECESSED LIGHTING FIXTURES MUST HAVE 1/2" CLEARANCE FROM COMBUSTIBLE MATERIALS AND 3" CLEARANCE FROM INSTALLATION OR BE IC RATED PER ARTICLE 410.116 (A) 1 AND 2 AND 410.116 (B) OF THE 2011 NEC.
- MINIMUM SIZE CONDUIT FOR 20A CIRCUITS IS 1/2" CONDUIT FOR METALLIC AND PVC CONDUIT. MC CABLE IS NOT ALLOWED IN OPEN CEILING AREAS.
- ALL PRE-WIRED EQUIPMENT MUST BE LISTED AND LABELED BY AN APPROVED TESTING AGENCY PER ARTICLE 110.3 (A AND B) OF THE 2011 NEC.
- THE TERMINATION PROVISIONS OF EQUIPMENT MUST BE USED IN DETERMINING THE AMPACITIES OF CONDUCTORS BASED ON TABLE 310.16 REGARDLESS OF THE INSTALLATION RATING OF THE CONDUCTORS PER ARTICLE 110.14 (C) 1 AND 2 OF THE 2011 NEC.
- FLASH PROTECTION WARNING LABELS REQUIRED ON SWITCHBOARDS, PANEL BOARDS, AND MOTOR CONTROL CENTERS PER ARTICLE 110.16 OF THE 2011 NEC.
- SPACES ABOUT ELECTRICAL EQUIPMENT MUST MEET 110.26 (A THROUGH F) ARTICLE 2011 NEC.
- RACEWAYS AND CABLES INSTALLED ABOVE SUSPENDED CEILING REQUIRED TO HAVE INDEPENDENT SUPPORT WIRES. CEILING GRID WIRES CANNOT BE USED TO SUPPORT RACEWAY AND CABLES UNLESS CEILING GRID IS RATED FOR SUPPORT PER ARTICLE 300.11 OF THE 2011 NEC.
- TYPE NM, NMC AND NMS CABLES CANNOT BE USED ABOVE SUSPENDED CEILING PER ARTICLE 334.12 OF THE 2011 NEC.
- FLEXIBLE CORDS CANNOT BE USED AS A SUBSTITUTE FOR FIXED WIRE OR CONCEALED ABOVE SUSPENDED CEILING PER ARTICLE 400.8 (1) AND (5) PER THE 2011 NEC.
- INDIVIDUAL UNIT EQUIPMENT USED FOR EXIT SIGNS AND EMERGENCY LIGHTS THAT USES A RECHARGEABLE BATTERY MUST BE SUPPLIED BY THE CIRCUIT THAT SUPPLIES THE NORMAL LIGHTING FOR THAT AREA PER ARTICLE 700.12 (F) AND 700.17 OF THE 2011 NEC.
- LAY IN FIXTURES INSTALLED IN SUSPENDED CEILING SHALL BE FASTENED TO GRID BY SCREWS OR LISTED CLIPS PER ARTICLE 410.36 OF THE 2011 NEC.

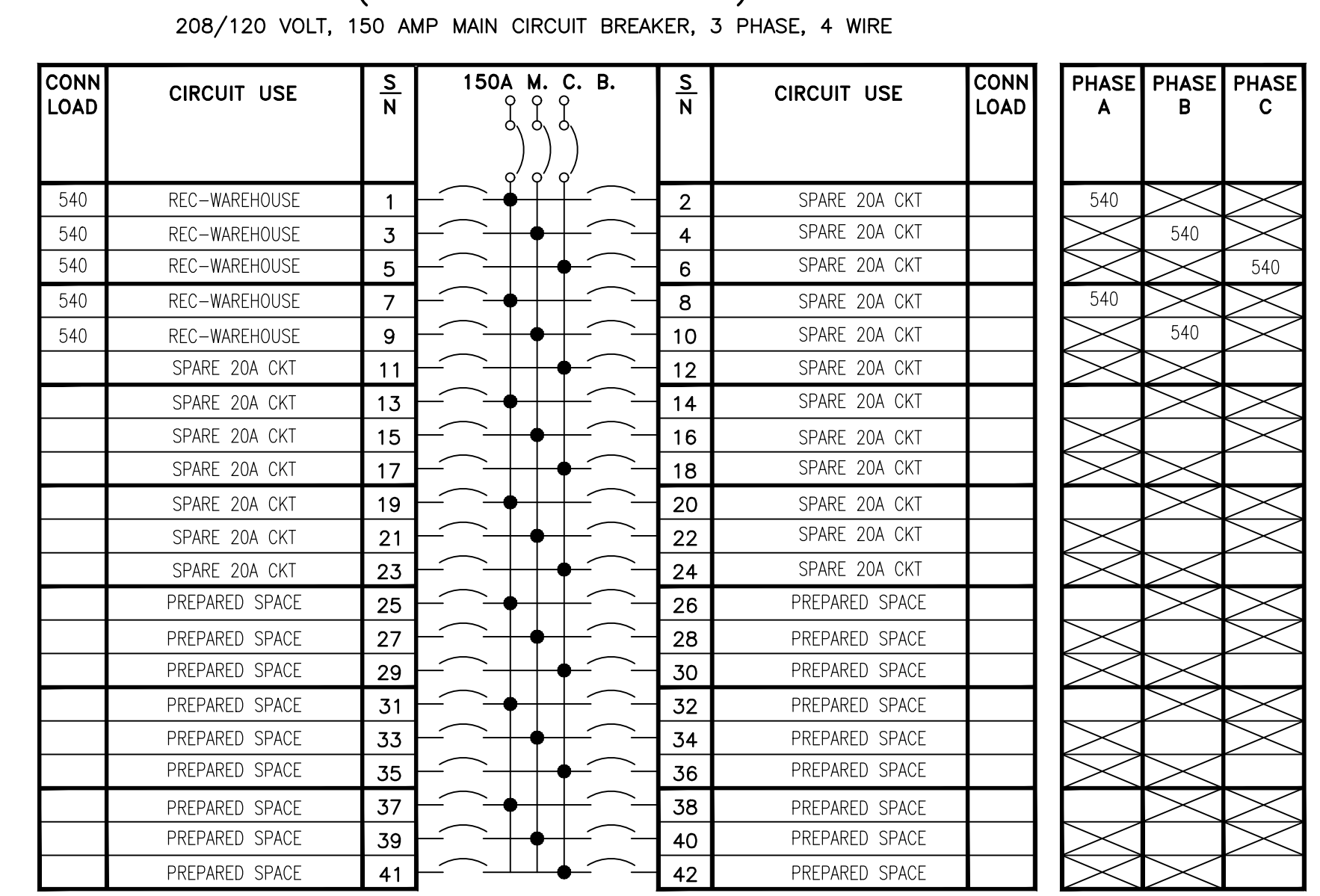
POWER LEGEND

- 20A, 125V, 2P, NEMA 5-20R DUPLEX RECEPTACLE
- POWER OUTLET, 208V, SIZED AS NOTED.
- QUADRAPLEX OUTLET (2 DUPLEX OUTLETS IN 2 GANG BOX WITH 2 GANG COVER PLATE)
- 20A, 125V, 3P, 3W, NEMA 5-20R DUPLEX RECEPTACLE MOUNT 6" ABOVE COUNTER TO BOTTOM OF OUTLET BOX.
- ADJACENT TO RECEPTACLE DENOTES GROUND FAULT INTERRUPTER OUTLET, (FEED THRU TYPE).
- ADJACENT TO RECEPTACLE INDICATES WEATHERPROOF IN USE TYPE COVER.
- ADJACENT TO RECEPTACLE INDICATES WEATHER RESISTANT RECEPTACLE.
- TYPICAL DATA OUTLET DOUBLE GANG OUTLET BOX WITH SINGLE GANG MUD RING. STUB 3/4" CONDUIT TO ACCESSIBLE LOCATION ABOVE CEILING. PROVIDE PULL STRING IN CONDUIT. COMMUNICATIONS CONTRACTOR TO PROVIDE FACE PLATE, WIRING, AND FINAL CONNECTIONS.
- JUNCTION BOX
- LIGHTING OR RECEPTACLE PANEL BOARD.
- DISCONNECT SWITCH.
- FUSED DISCONNECT SWITCH.
- DISCONNECT FURNISHED WITH EQUIPMENT
- EXHAUST FAN.
- SEE MECHANICAL DWGS. FOR FAN SPECIFICATIONS. MOTOR, HORSEPOWER AS SHOWN.
- "HOME-RUN" TO PANEL BOARD.
- CONDUIT TURNING UP THRU CEILING OR ROOF.
- CONDUIT TURNING UP THRU FLOOR OR TERMINATING AT EQUIPMENT.

EXISTING PANEL "DP"

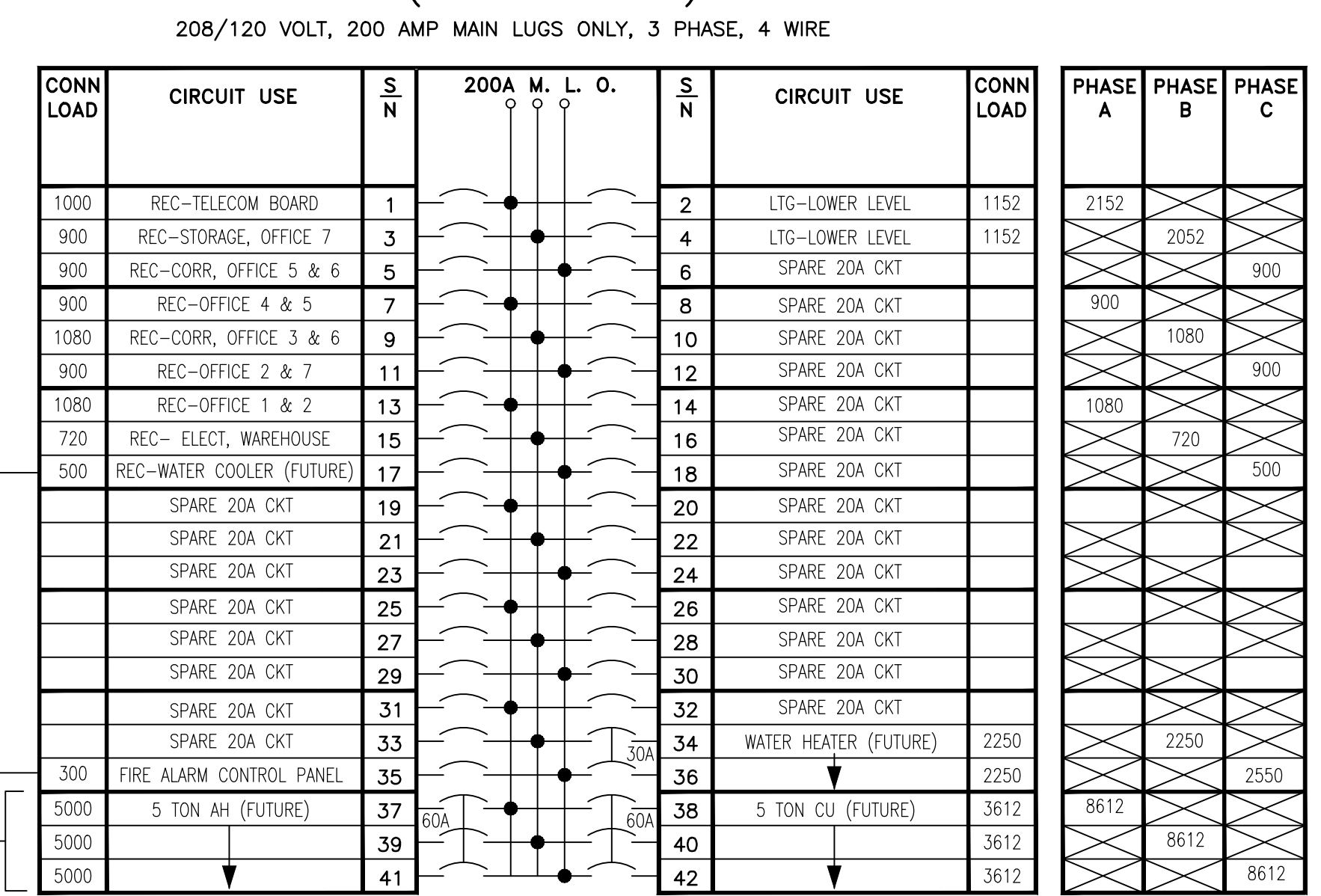


PANEL RP1 (WAREHOUSE AREA)

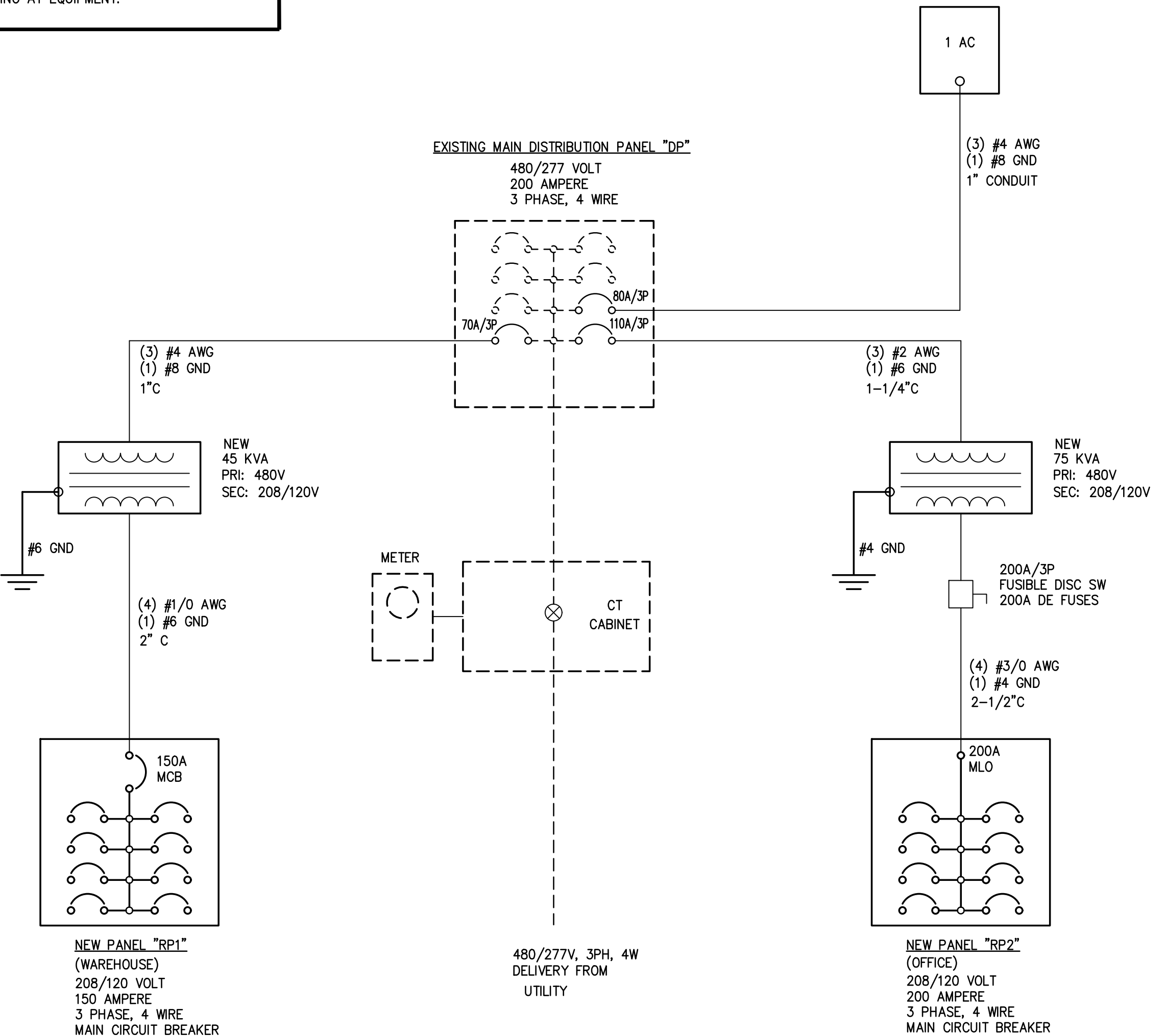


NOTES:
 1. ALL CIRCUIT BREAKERS 20 AMPERE, SINGLE POLE, UNLESS NOTED OTHERWISE.

PANEL RP2 (OFFICE AREA)



NOTES:
 1. ALL CIRCUIT BREAKERS 20 AMPERE, SINGLE POLE, UNLESS NOTED OTHERWISE.
 2. GFCI TYPE CIRCUIT BREAKER REQUIRED FOR THIS CIRCUIT
 3. AIR HANDLER ELECTRICAL LOAD IS ESTIMATED. VERIFY UNIT NAMEPLATE DATA BEFORE PURCHASING CIRCUIT BREAKER.
 4. PROVIDE LOCKING DEVICE RED IN COLOR FOR FACP CIRCUIT.



SINGLE LINE WIRING DIAGRAM
 (DASHED LINES DENOTE EXISTING EQUIPMENT)

TRANSFER STATION RENOVATION SPARTANBURG, S.C. FOR CITY OF SPARTANBURG	ISSUED FOR PERMITTING AND CONSTRUCTION 02/22/16 DATE 0 REV
MATRIX ENGINEERING, INC. 912 SOUTH PINE STREET SPARTANBURG, SOUTH CAROLINA (864)583-8274 www.matrixinc.com	29302 FAX (864)583-2795 No. 9901 No. 01034 02-22-2016
SCALE: NONE DATE: 08-10-2015 FILE NAME: E-1.0	DWG NO: E-1.0 PROJECT NO: 2015-088 REV: 0