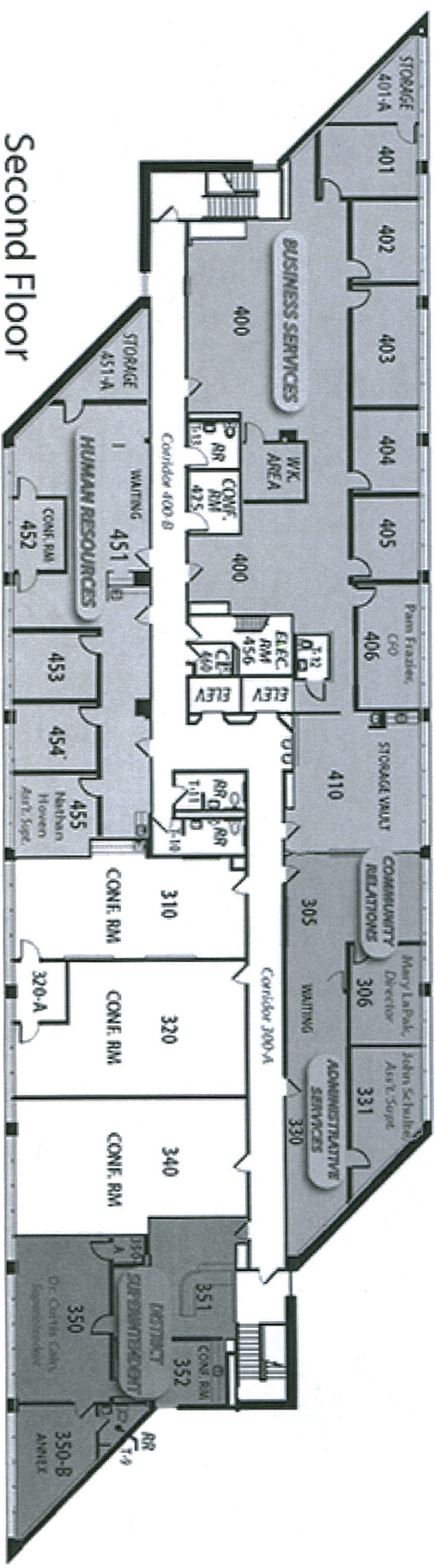
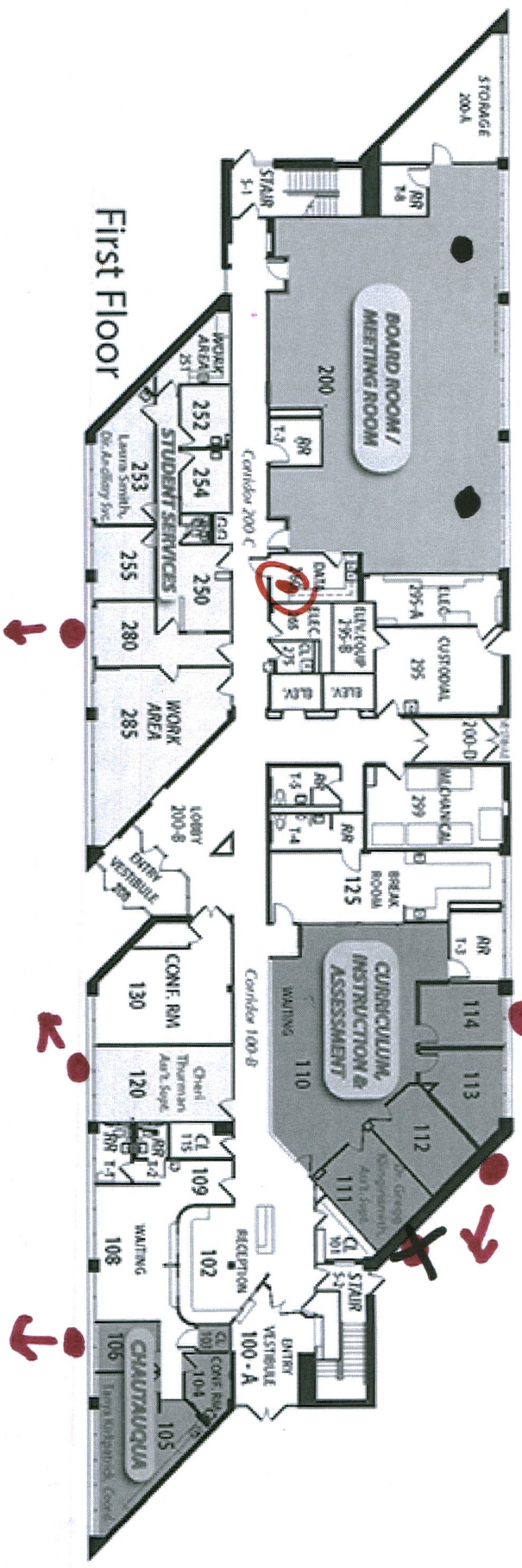


**WSD ADMINISTRATIVE CENTER**  
280 Interstate Drive, Wentzville, MO

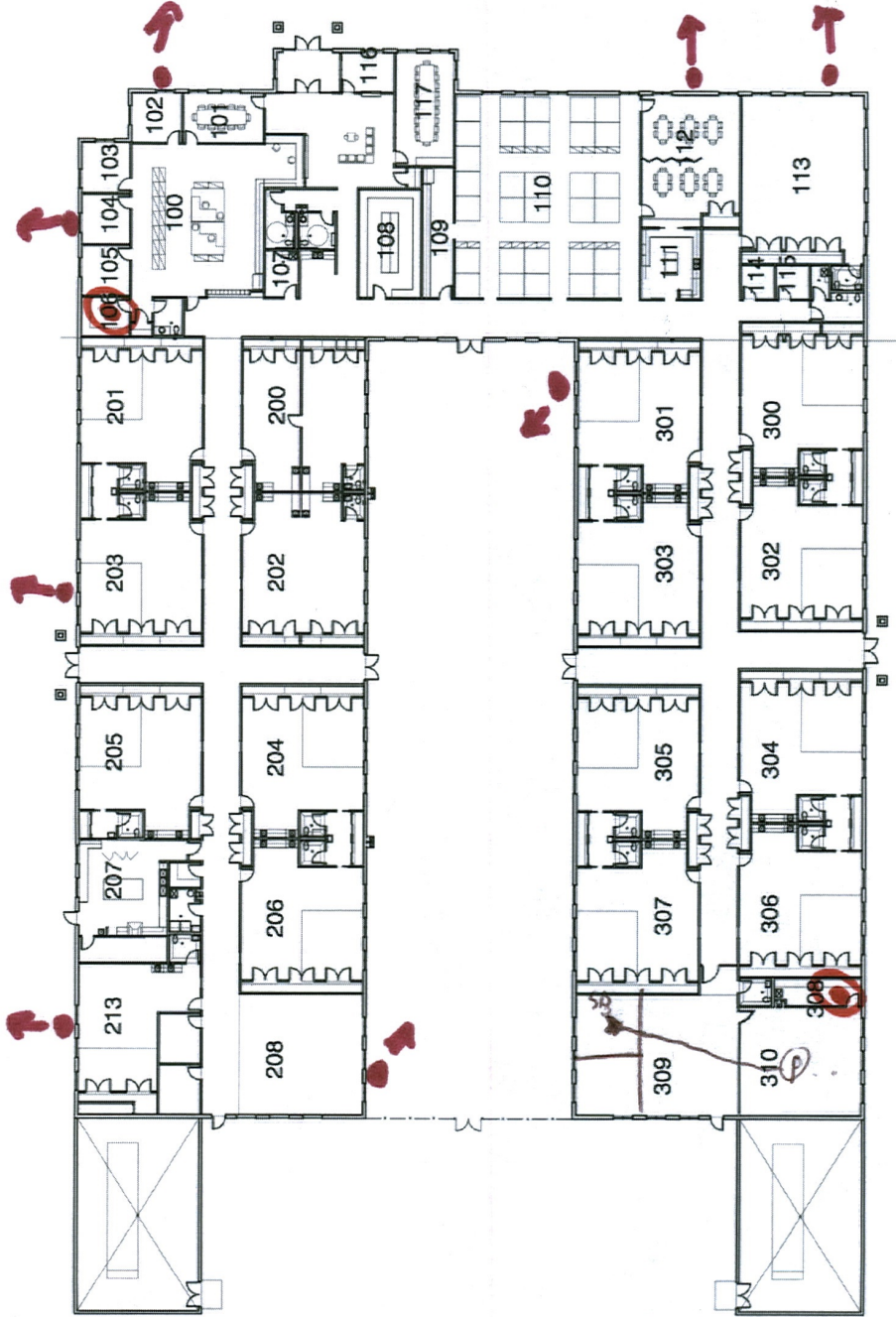


ARC

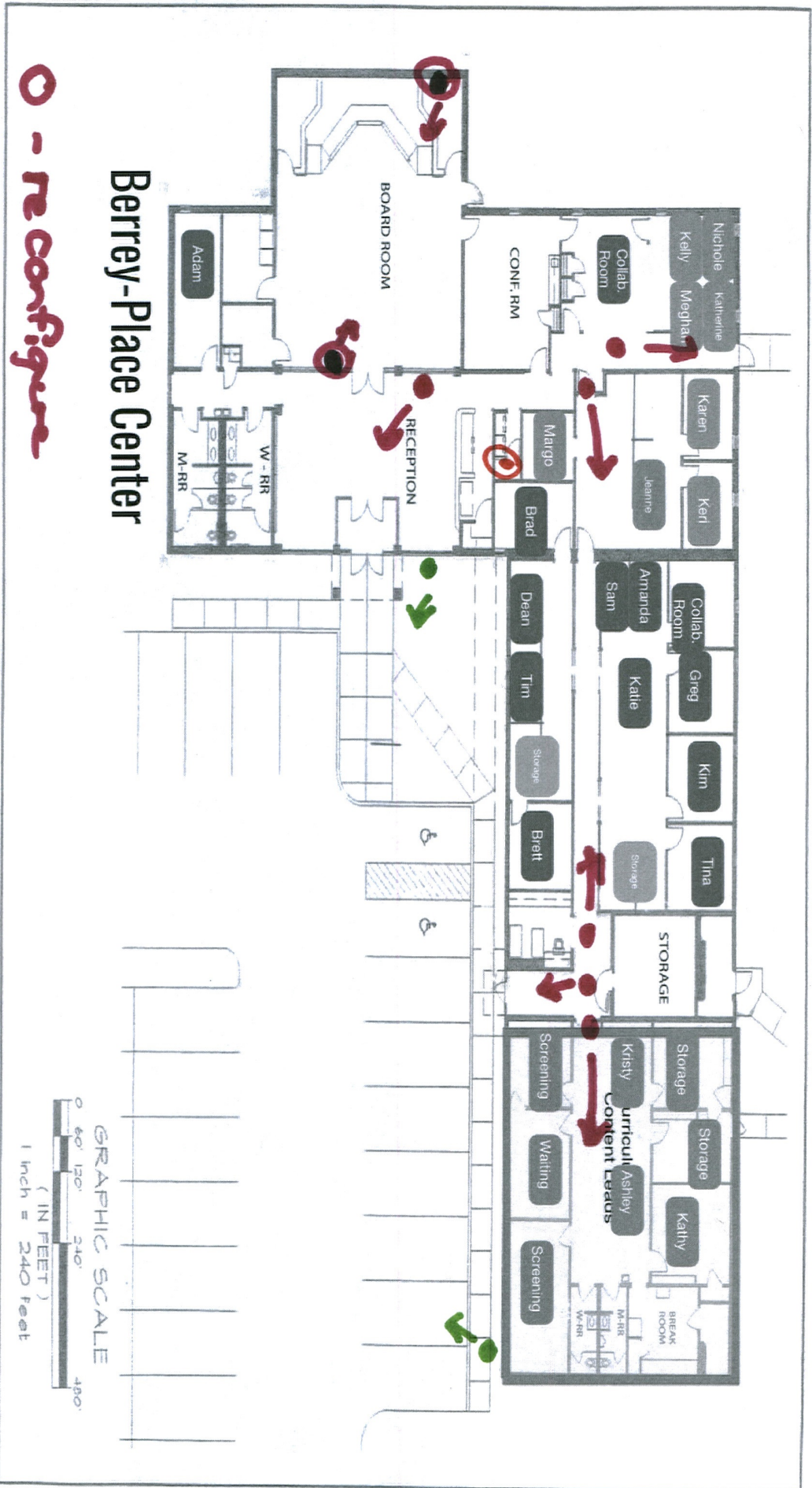


Second Floor

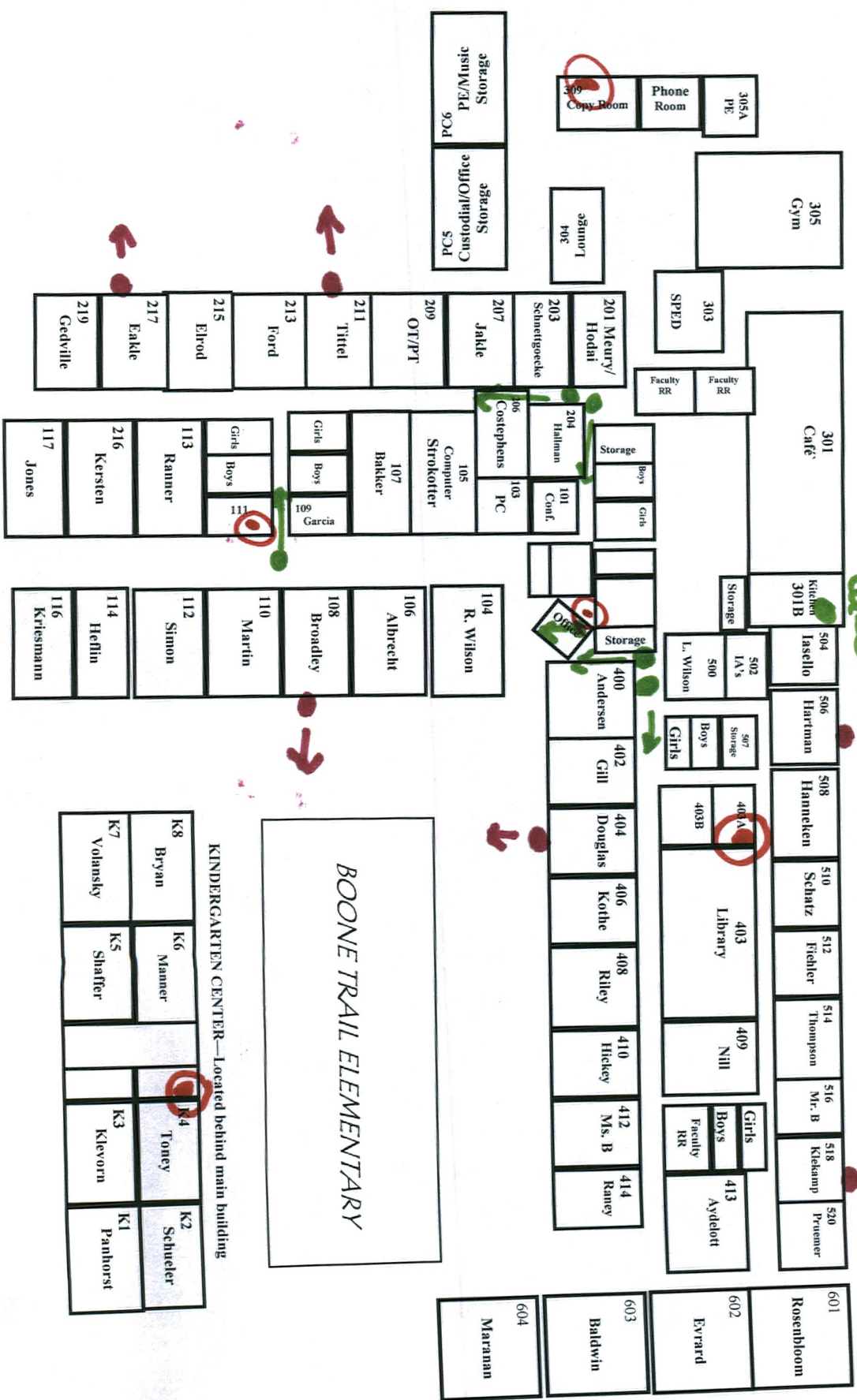
BECC



Move  
Projector  
Room  
310  
to  
308B!



BTE



KINDERGARTEN CENTER—Located behind main building

K8	Bryan	K6	Manner	K4	Toney	K2	Schueler
K7	Volansky	K5	Shaffer	K3	Klievern	K1	Panhorst

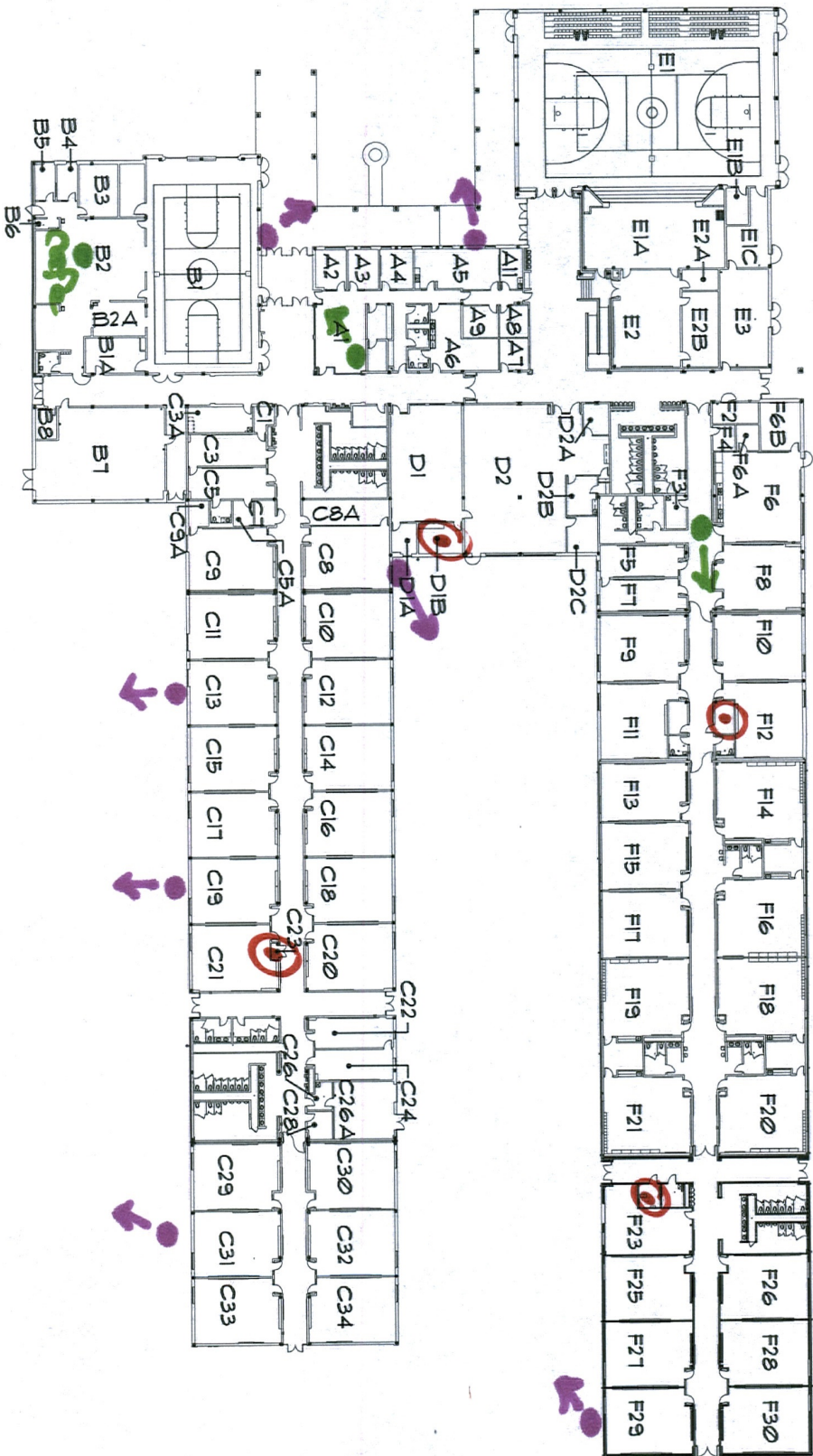
BOONE TRAIL ELEMENTARY



Crossroads Elementary

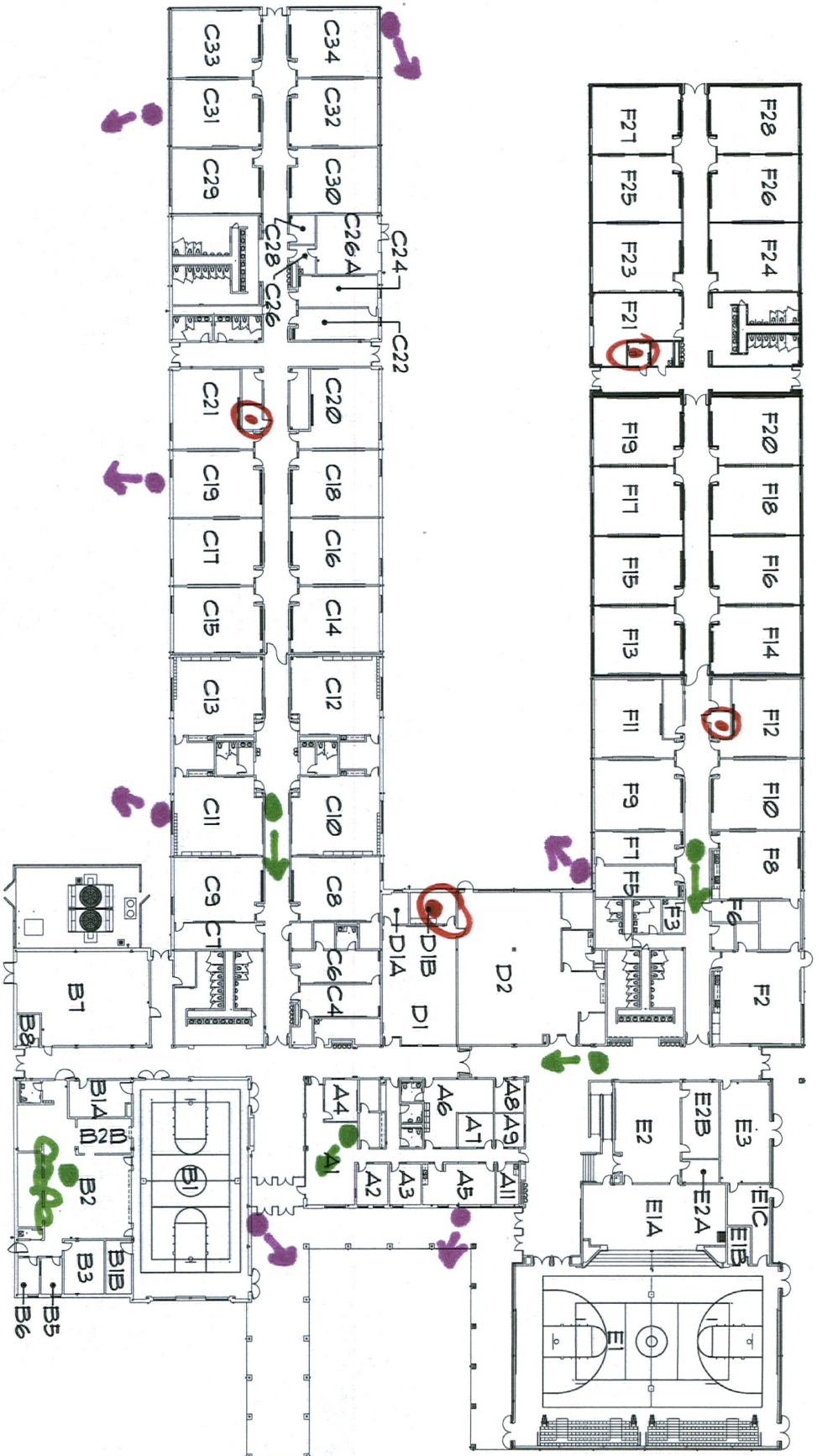
CRE

DUE



DUELLO ELEMENTARY SCHOOL

DRE



DISCOVERY RIDGE ELEMENTARY SCHOOL

Frontier Middle School

FMS



UPPER FLOOR

MAIN FLOOR

UPPER FLOOR



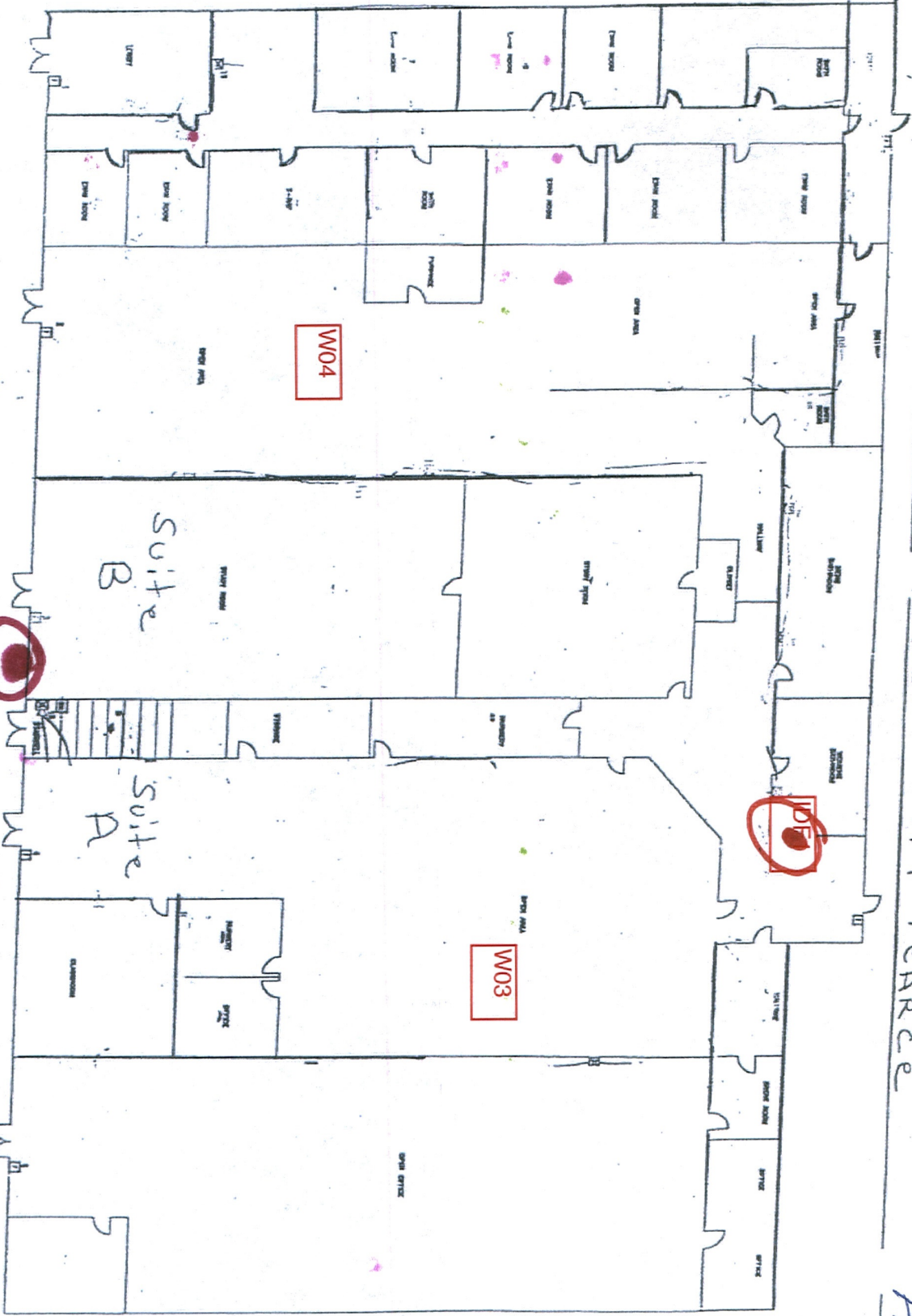


GREEN TREE ELEMENTARY SCHOOL

Street Level 719 Pearce

Harris Building - main level

Harris



CURRICULUM

Purchasing

Alternative Program

360

DIAGNOSTIC

DIAGNOSTIC CENTER

# HERITAGE PRIMARY & INTERMEDIATE

HE

3	○	K80	○
3	○	K7	○
3	○	Kind Office	○
2	○	Kind Office	○
1	○	Kind Office	○

Kindergarten Bldg.

UPSTAIRS:

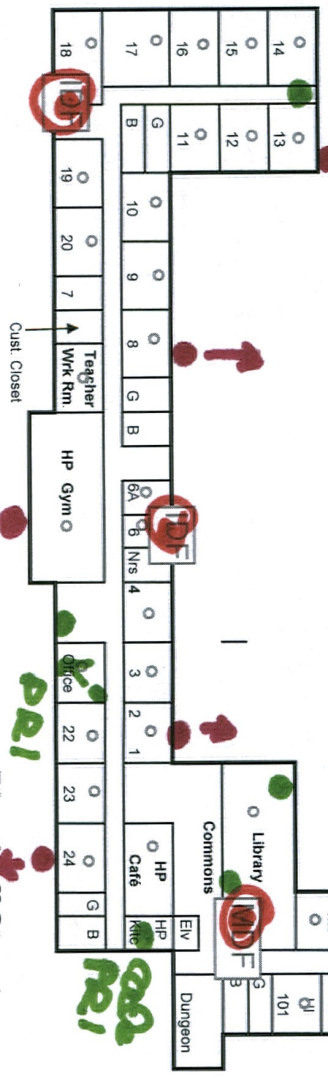
○	508	○	506	○	504	○	502	500
○	509	○	507	○	505	○	503	501
								B
								G

○	408	○	406	○	404	○	402	400
○	409	○	407	○	405	○	403	401
								B
								G

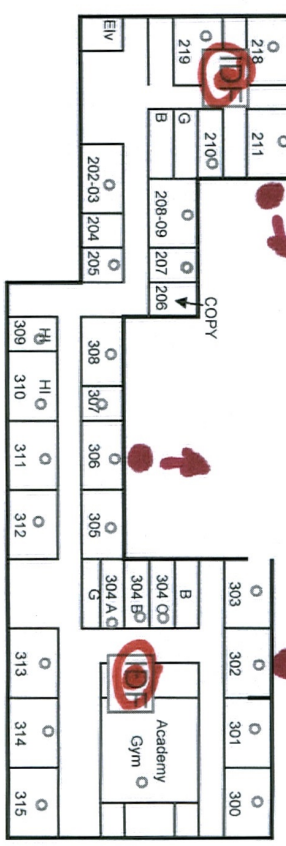
○	410	○	411	○	412
○	413	○	414	○	415

South Playground

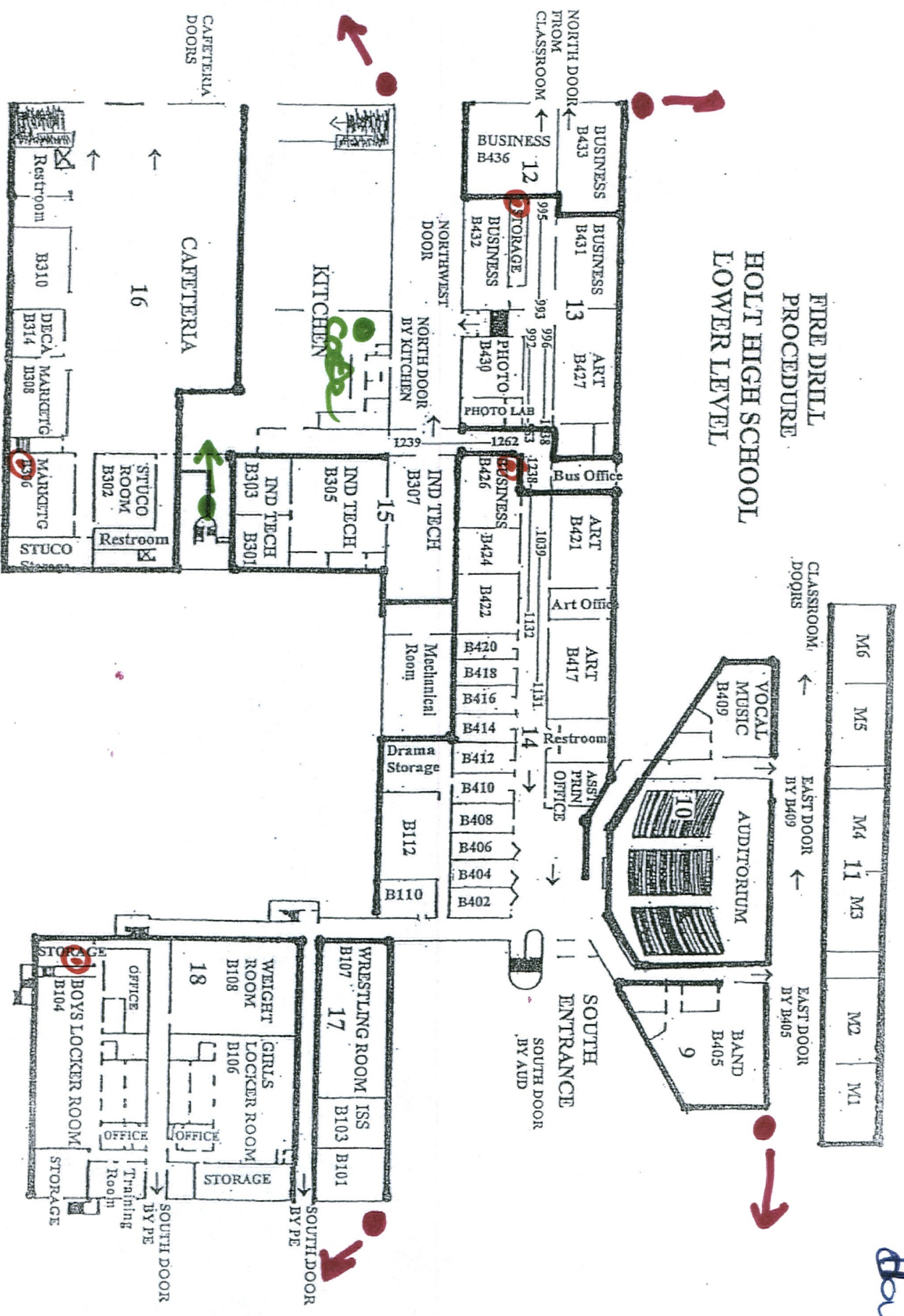
North Playground



Blumhoff Street

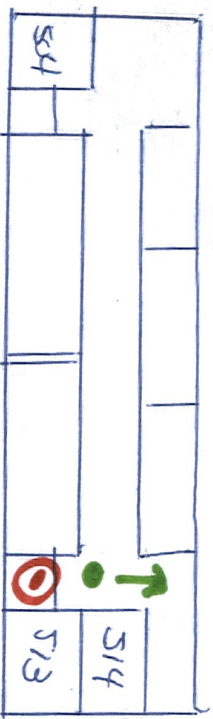
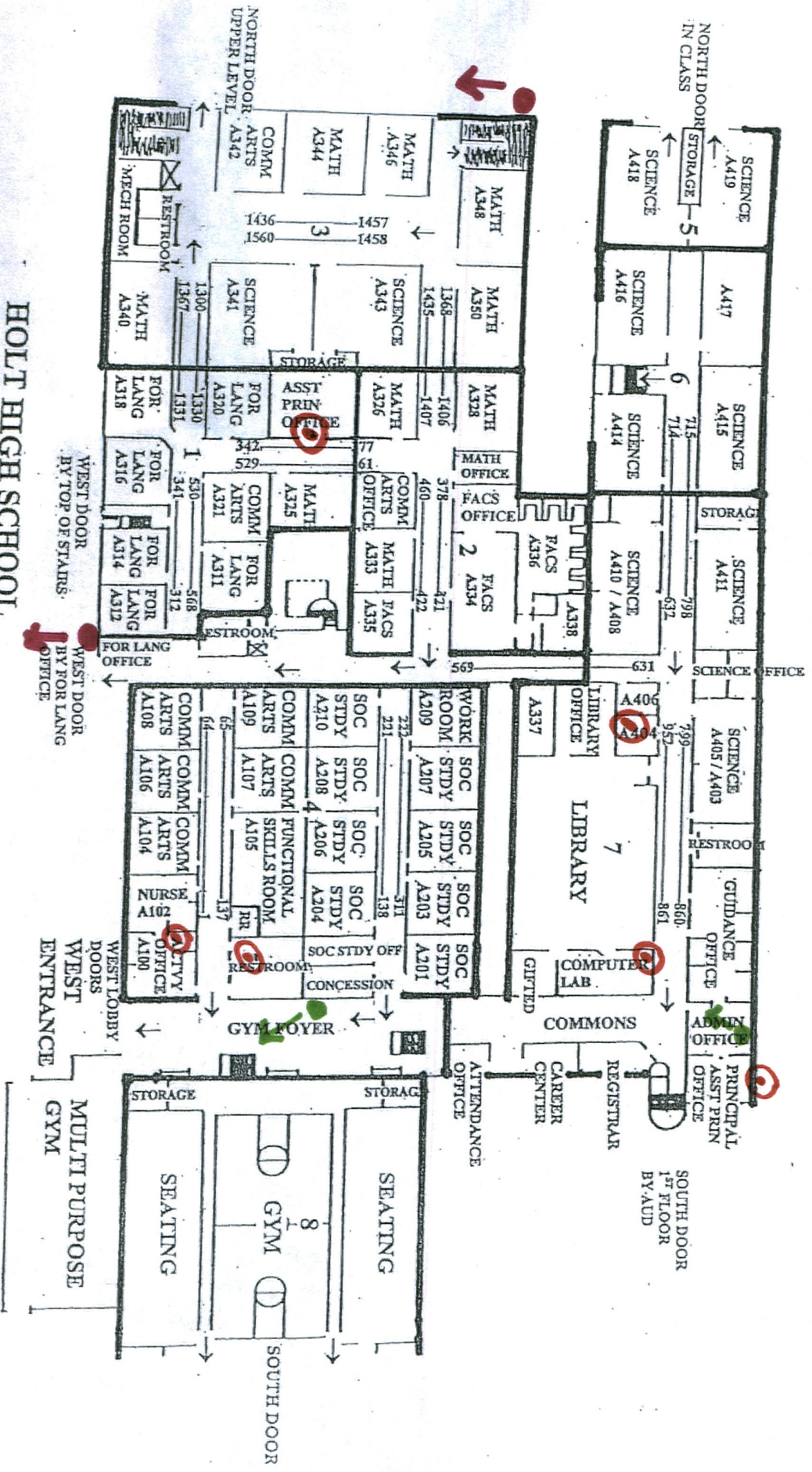


# FIRE DRILL PROCEDURE HOLT HIGH SCHOOL LOWER LEVEL



HHS  
Down

**HOLT HIGH SCHOOL  
UPPER LEVEL  
FIRE DRILL  
PROCEDURE**



3rd Floor

AHS  
UP

Soby Field

PLAN LEGEND

- A ADMINISTRATION SUITE
  - A1 RECEPTION AREA
  - A2 STORAGE
  - A3 PRINCIPAL OFFICE
  - A4 ASSISTANT PRINCIPAL
  - A5 9th GRADE ACADEMY ADMIN AREA
  - A6 ADMIN ASSISTANT
- B ADMIN SUITE SUPPORT AREAS
  - B1 GUIDANCE RECEPTION
  - B2 GUIDANCE COUNSELOR OFFICE
  - B3 GUIDANCE OFFICES
  - B4 CONFERENCE ROOM
  - B5 WORK ROOM AND STORAGE
  - B6 NURSE AREA
  - B7 WORK ROOM
  - B8 RESTROOM ADA
  - B9 SECURE STORAGE ROOM
  - B10 RESOURCE/TECHNOLOGY OFFICE
  - B11 STAFF/STUDENT/ADA RESTROOMS
- C FACULTY WORK / SUPPORT AREAS
  - C1 CENTRAL COPY
  - C2 WORKROOM
  - C3 STORAGE
- D 9th GRADE ACADEMY
  - D1 GENERAL CLASSROOM
  - D2 SCIENCE PREP
- E 10th, 11th, and 12th GRADE CORE CLASSROOMS
  - E1 GENERAL CLASSROOM
  - E2A SCIENCE PREP
  - E2B SCIENCE STORAGE
- F NON-CORE CURRICULUM ROOMS
  - F1 ART
    - F1a ART CLASSROOM
    - F1b ART STORAGE
    - F1c CLAY STORAGE
  - F2 BUSINESS CLASSROOM
  - F2a STORAGE
  - F3 RAIN LAB
  - F3a STORAGE
  - F4 FACS and CHILD DEVELOPMENT
  - F4a FACS PROJECT ROOM
  - F4b CLOTHING STORAGE
  - F4c PAINTING
  - F4d LAUNDRY AREA
  - F5 CHILD DEVELOPMENT
  - F5a CHILD DEV. CLASSROOM
  - F5b CHILD DEV. FLAN AREA
  - F5c STORAGE
  - F5d RESTROOM
  - F6 FOREIGN LANGUAGE
  - F6a STORAGE
  - F6b INDUSTRIAL TECH
  - F7 WOOD SHOP
  - F7a STORAGE
  - F7b OFFICE
  - F7c PAINT/FINISH ROOM
  - F7d CAD/CAM CLASSROOM
  - F8 MESSAGING CENTER
  - F8a MUSIC LIBRARY
  - F8b MUSIC LIBRARY
  - F8c CHORUS MUSIC STORAGE
  - F8d CHORUS MUSIC STORAGE
  - F8e CHORUS MUSIC STORAGE
  - F8f CHORUS MUSIC STORAGE
  - F8g BAND CLASSROOM
  - F8h BAND CLASSROOM
  - F8i ENSEMBLE ROOM
  - F8j ENSEMBLE STORAGE
  - F8k BAND MUSIC STORAGE
  - F8l INSTRUMENT STORAGE
  - F8m BAND OFFICE
- G FACULTY WORK / SUPPORT AREAS
  - G1 MAN LIBRARY
  - G2 COMPUTER LAB
  - G3 LIBRARY OFFICE
  - G4 STORAGE
  - G5 STUDY ROOM
- H PHYSICAL EDUCATION / ATHLETICS
  - H1 ATHLETICS DIRECTOR SECRETARY
  - H2 ATHLETICS DIRECTOR OFFICE
  - H3 MAIN FIELD HOUSE GYMNASIUM
  - H4 MAIN GYM FLE STORAGE
  - H5 WESTING HOUSE
  - H6 TEAM STORAGE
  - H7 WEIGHT ROOM
  - H8 FITNESS CLASSROOM
  - H9 PE / TEAM LOCKER ROOMS
  - H10 COACHES COXEN AREA
  - H11 PE LOCKER AREA
  - H12 PE LOCKER OFFICES
  - H13 TRAINING ROOM
  - H14 AUXILIARY GYM STORAGE
  - H15 DRAMA/AUDITORIUM
  - H16 GREEN ROOM
  - H17 CLASSROOM STORAGE
  - H18 ALDITORIUM
  - H19 STRIKE COURT
  - H20 SCORE SHOP
  - H21 SCORE SHOP
  - H22 SCORE STORAGE
- I STORAGE STORAGE
  - I1 MAKE UP ROOM
  - I2 COORITIME STORAGE
- J CAFETERIA / COMMONS
  - J1 COMMONS / CAFETERIA
  - J2 STION ROOM
  - J3 CONGRESSION STRAND
  - J4 CONGRESSION STRAND
  - J5 CONGRESSION STRAND
  - J6 STUDIO
- K FOOD SERVICE
- L GENERAL STORAGE
- M BUILDING SERVICES
  - M1 MAIN LOBBY
  - M2 LOBBY (RECONSTR)
  - M3 RESTROOM
  - M4 RESTROOM
  - M5 OFFICE
- N MECHANICAL and ELECTRICAL EQUIPMENT
- O IT ROOM

MAIN LEVEL FLOOR PLAN - PHASE 1 and FUTURE



WATER PLAN	MAIN LEVEL, FOOTPRINT	UPPER LEVEL	TOTAL SF.
PLAN - PHASE 1	20,065 SF	84,340 SF	294,955 SF
MAIN LEVEL, FOOTPRINT	190,635 SF	68,110 SF	228,945 SF
UPPER LEVEL, FOOTPRINT		228,945 SF	

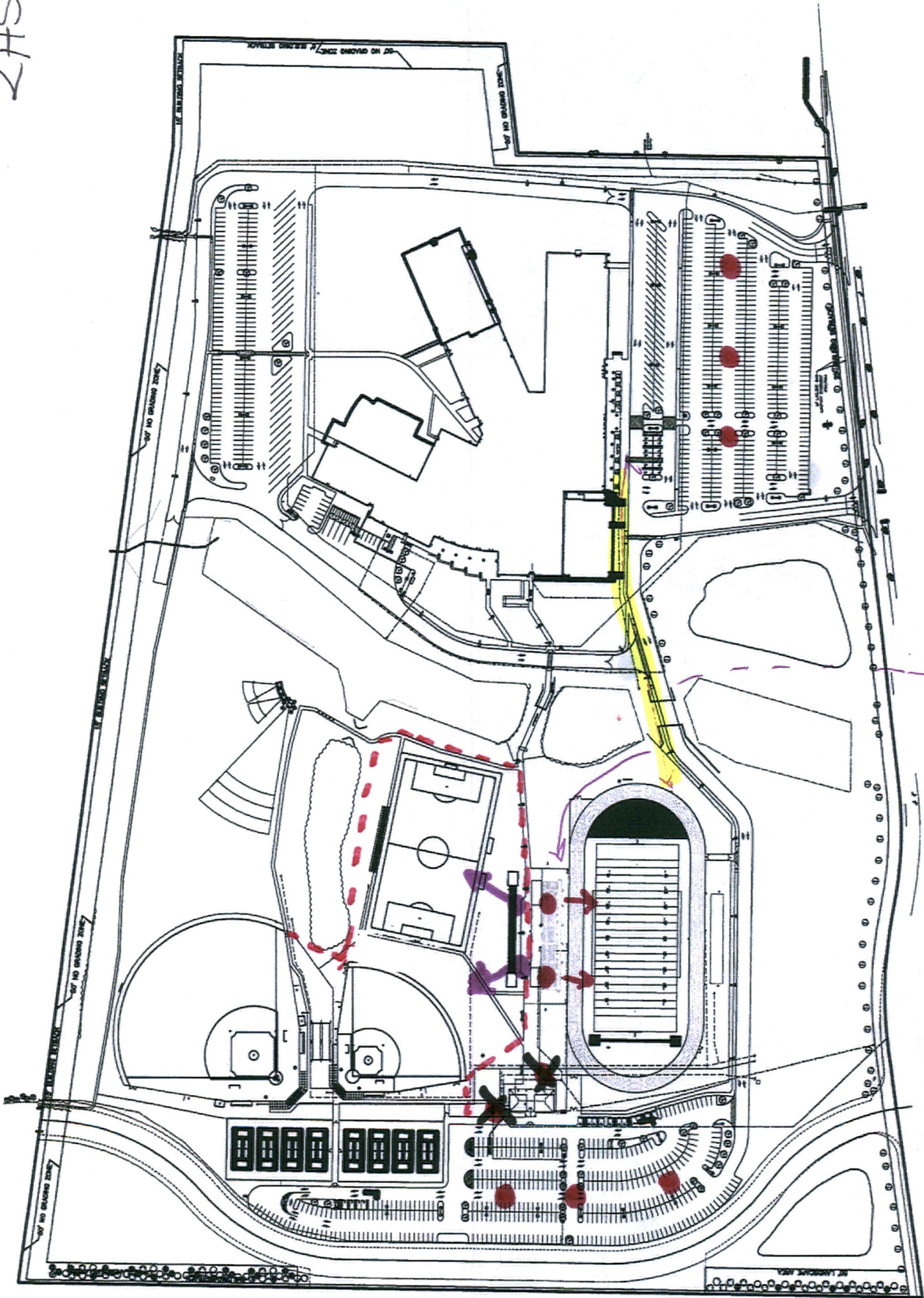
HOENER ASSOCIATES, INC.  
 ARCHITECTS  
 ST. LOUIS, MISSOURI  
 DATE: 10/25/11  
 PROJ. NO.:  
 T-09M

NEW WENTZVILLE HIGH SCHOOL  
 WENTZVILLE R-V SCHOOL DISTRICT  
 WENTZVILLE, MISSOURI

SECTION	DATE	BY	CHKD
PLAN			
ELEVATION			
SECTION			

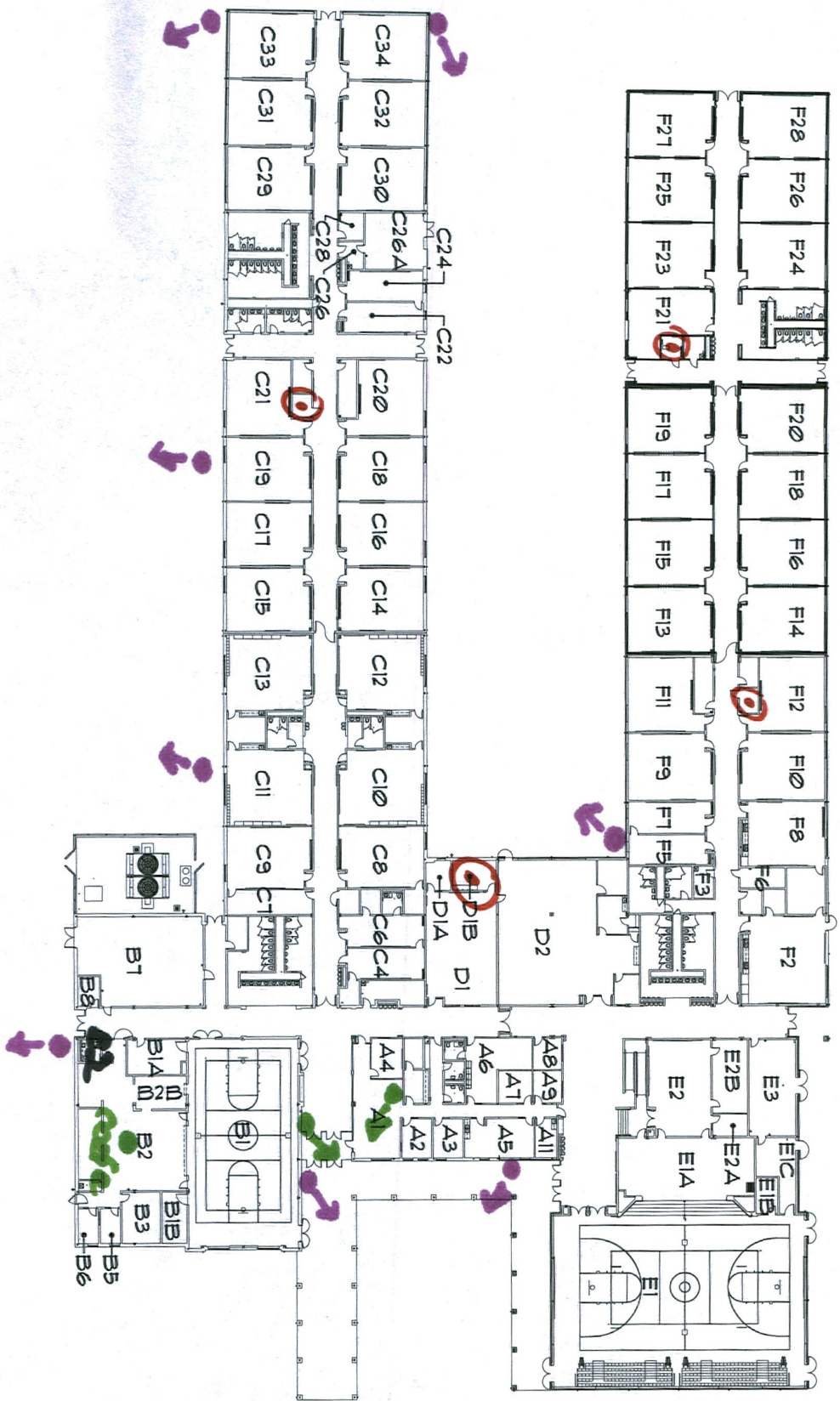
LHS  
 L1

--- remc  
o Camera  
LHS



Fiber needed

LVE

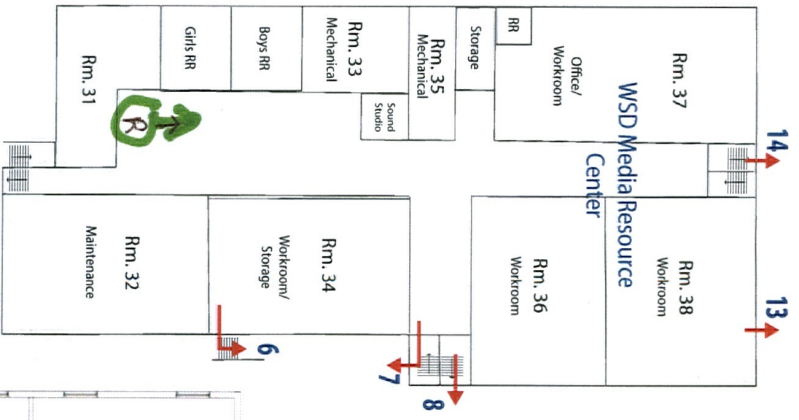


LAKEVIEW ELEMENTARY SCHOOL

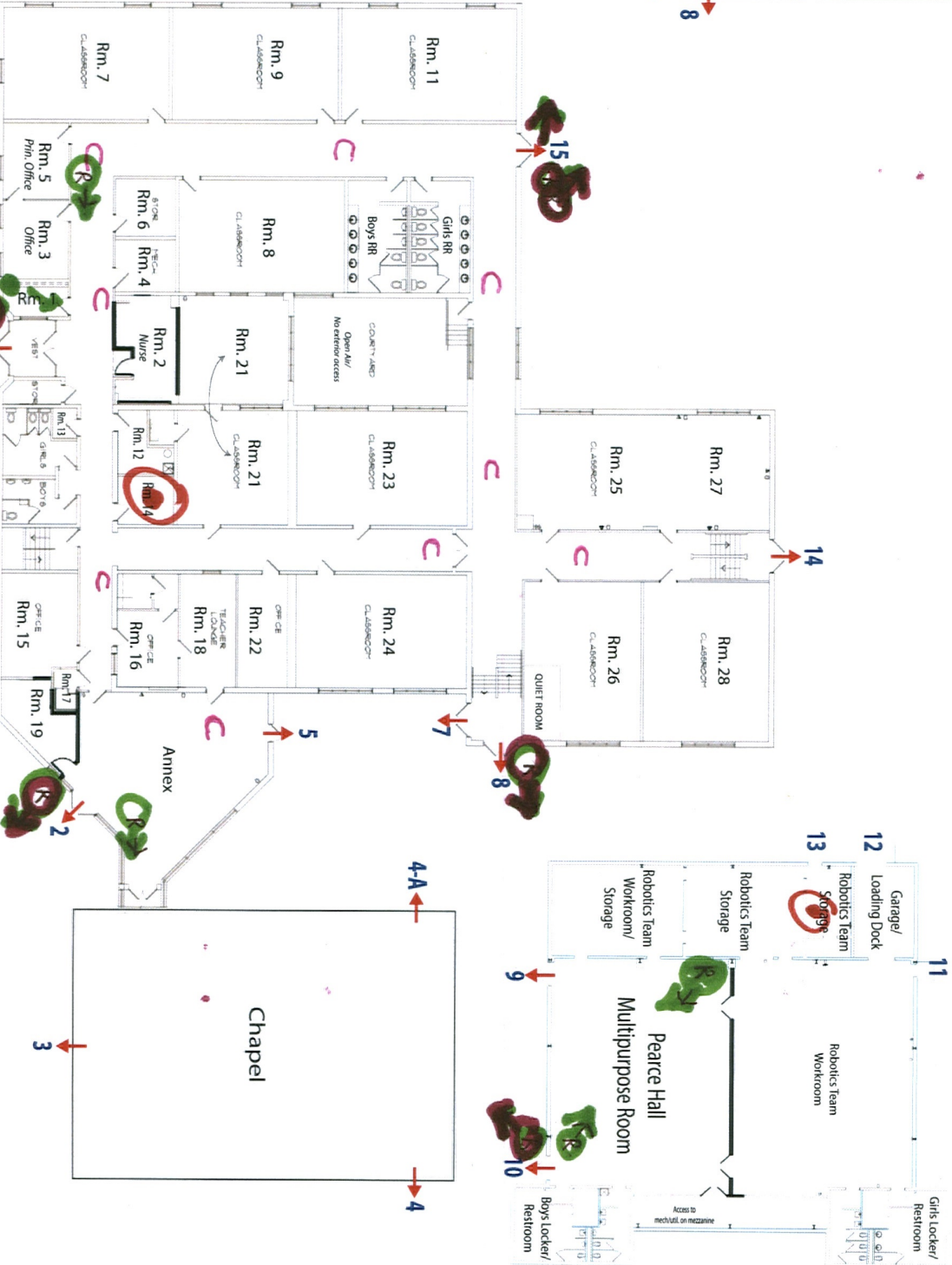


# PEARCE HALL

317 West Pearce Blvd. - Wentzville, MO 63385



## BASEMENT



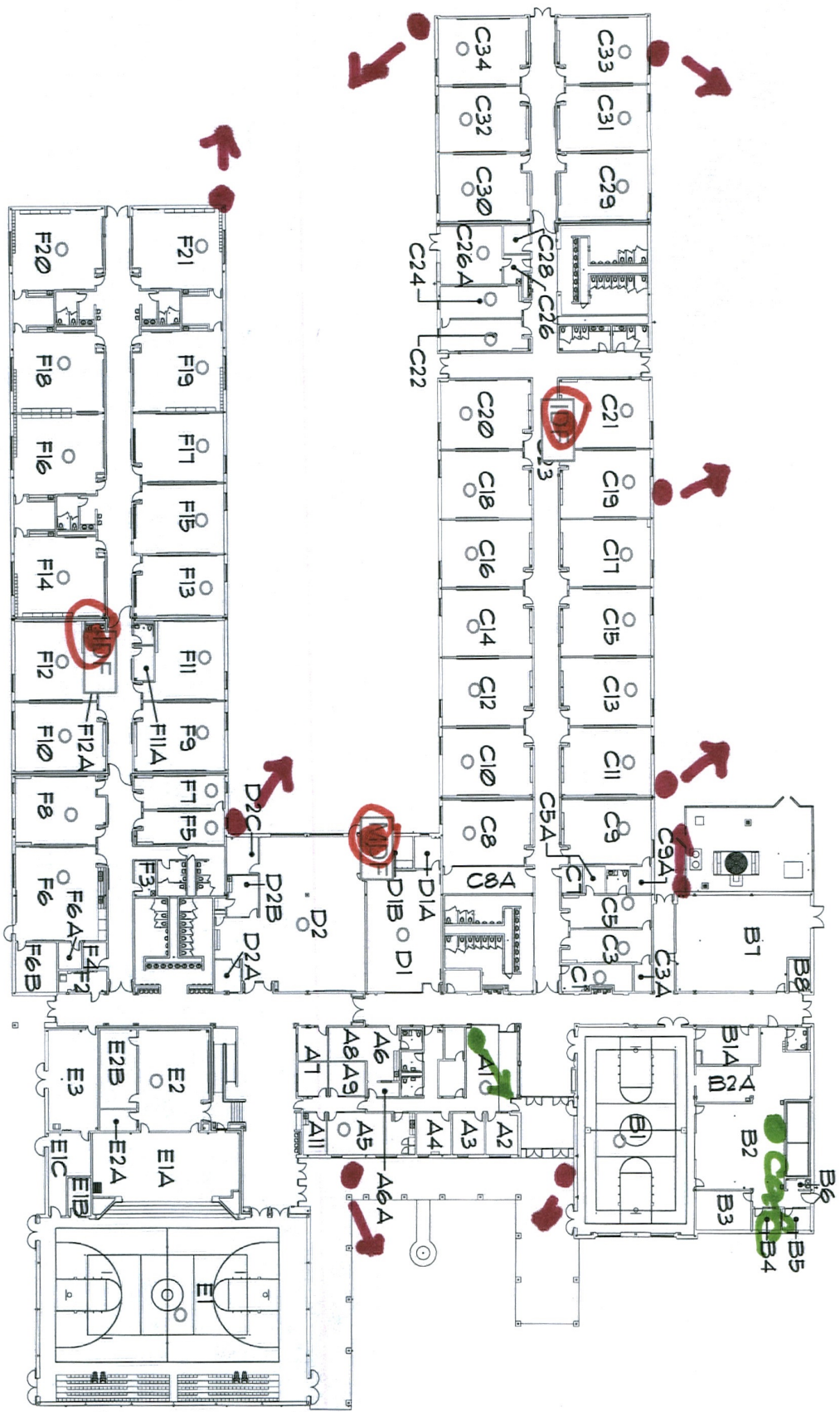
## FIRST FLOOR

BLUE NUMERALS INDICATE EXIT DOOR NUMBERING  
 REVIEWED: 4/2013; 12/2013; 8/2017

R = REQUESTED CAMERAS  
 C = CURRENT CAMERAS



PRE

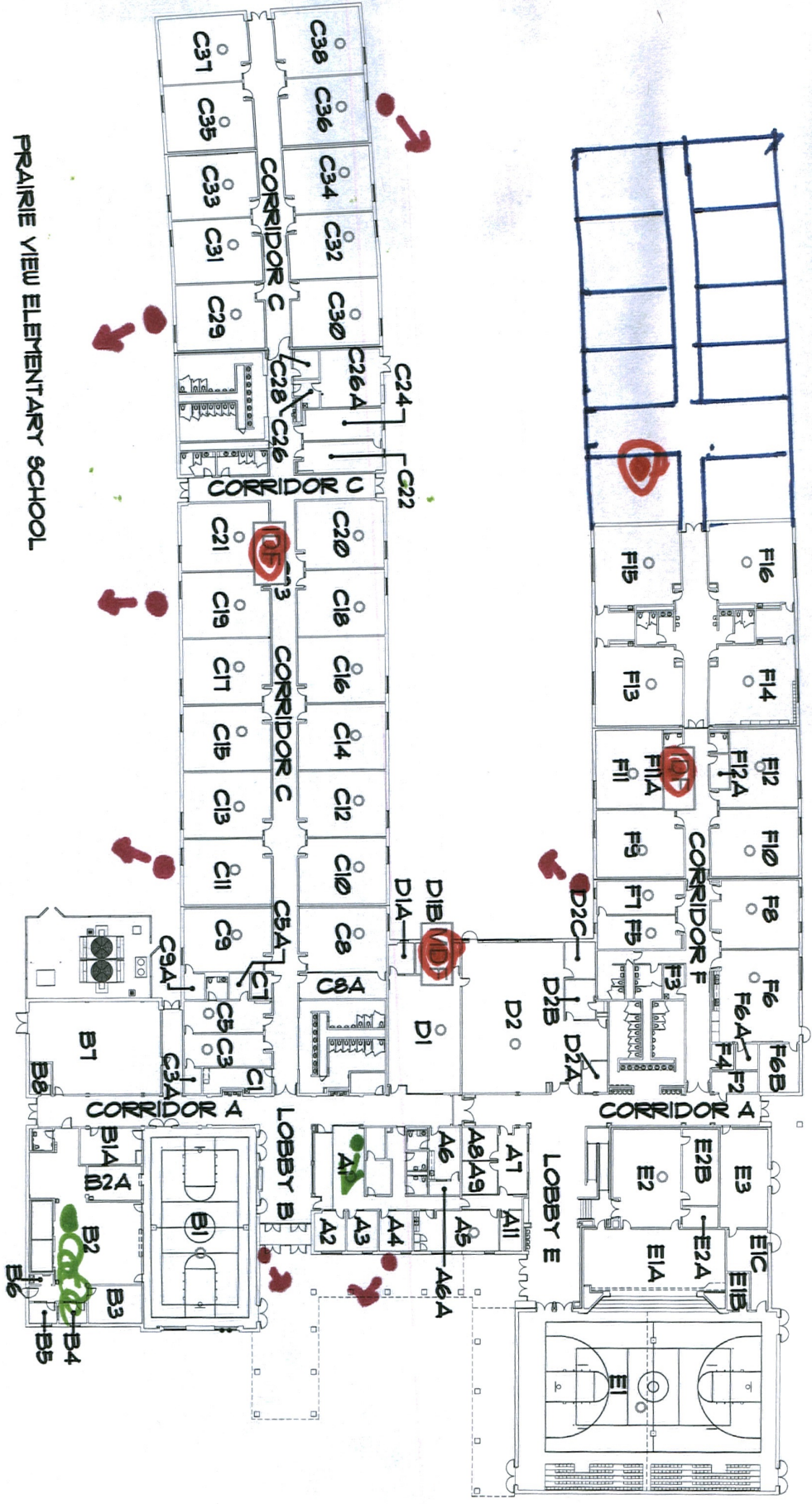


PEINE RIDGE ELEMENTARY SCHOOL

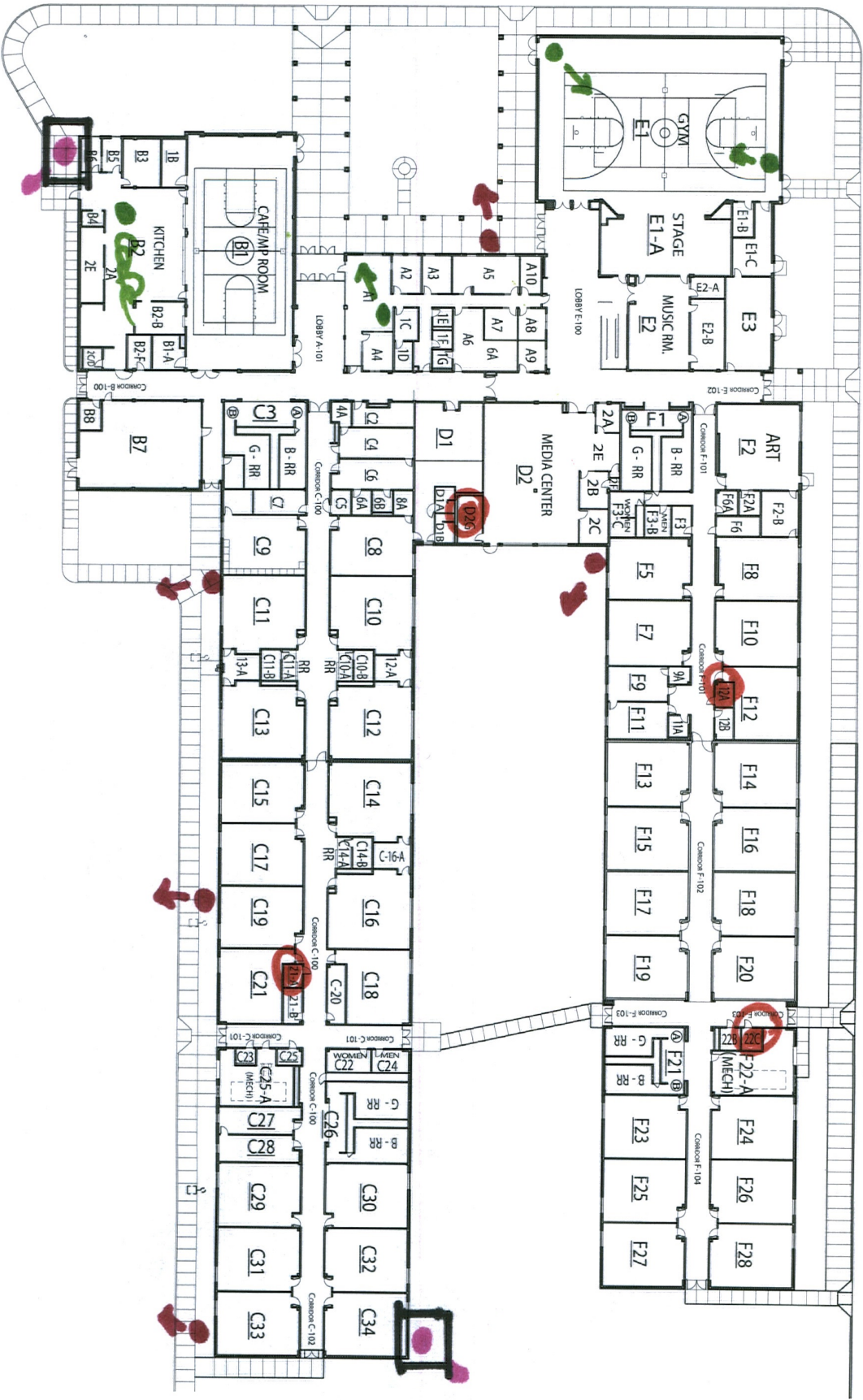


MDF/IDN

PVE



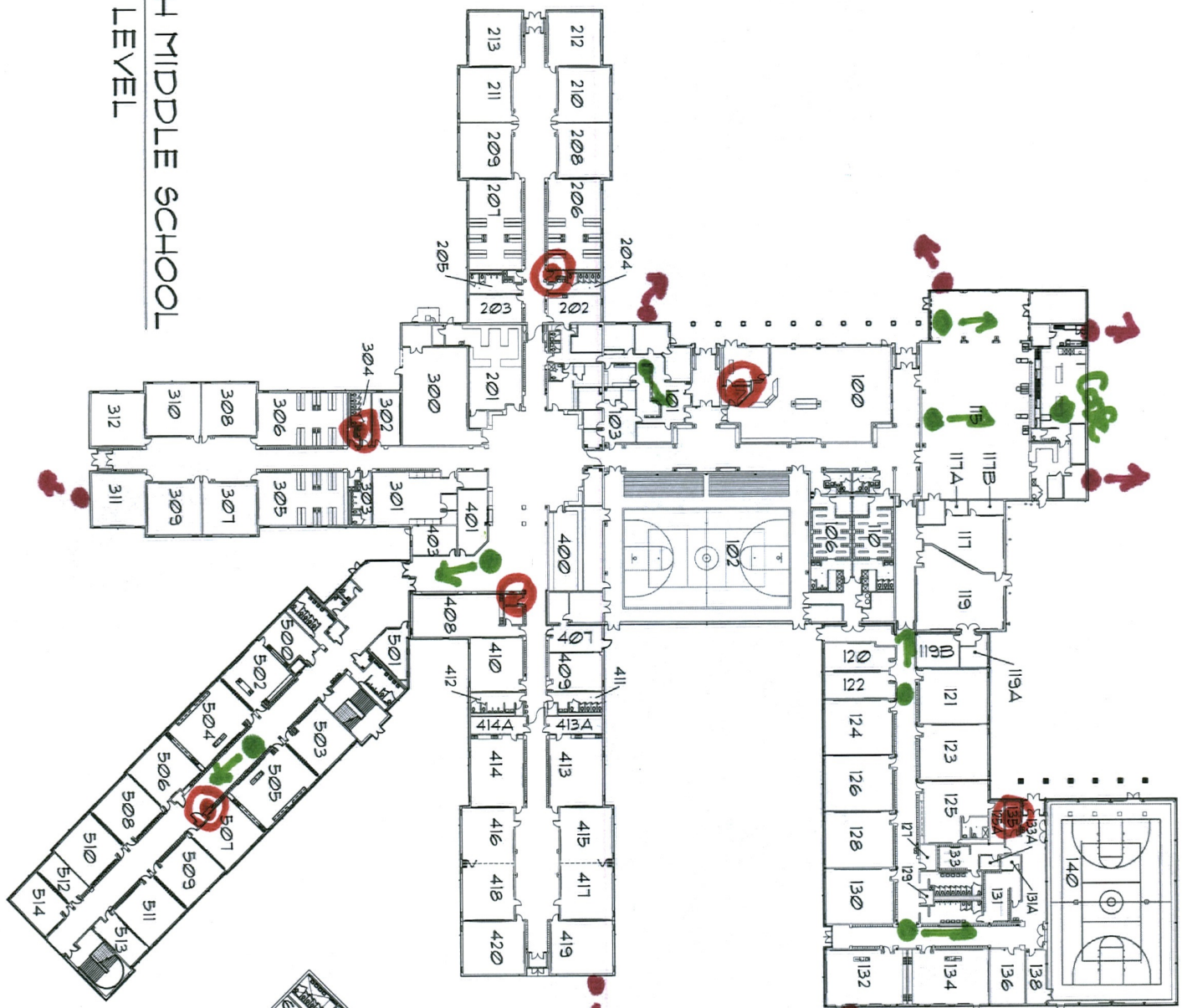
PRAIRIE VIEW ELEMENTARY SCHOOL



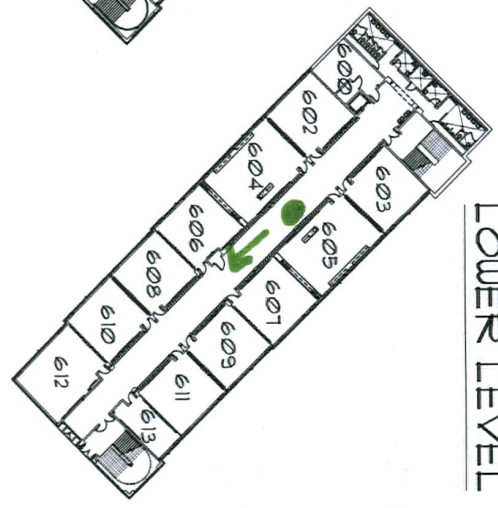
SCE

SMS

SOUTH MIDDLE SCHOOL  
MAIN LEVEL



LOWER LEVEL



SS

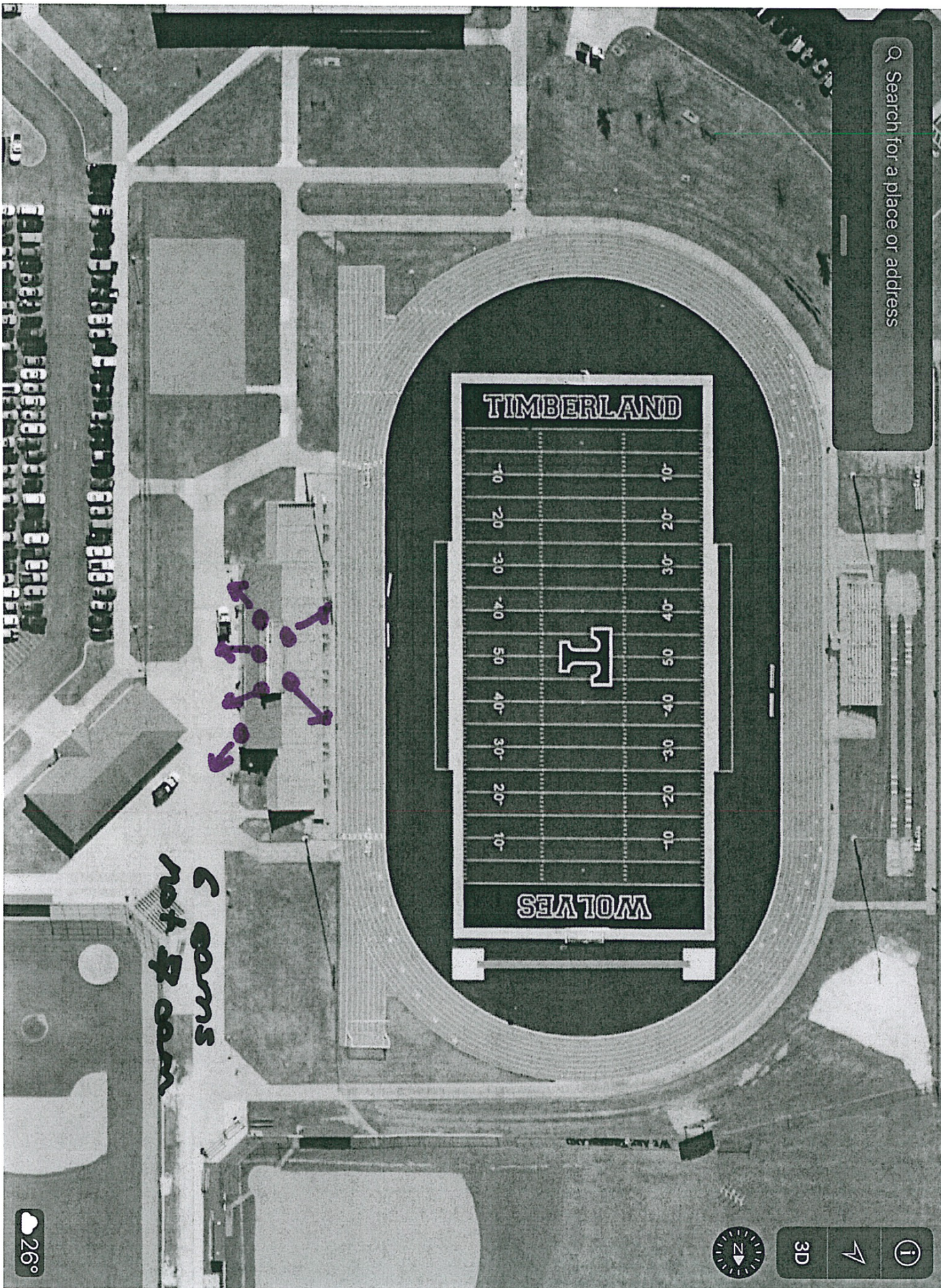
# SUPPORT SERVICE BUILDING

101 SUPPORT SERVICE DRIVE - WENTZVILLE, MO 63385



NOT DRAWN TO SCALE

Search for a place or address



6 corners not 7



3D



775



17  
SHL

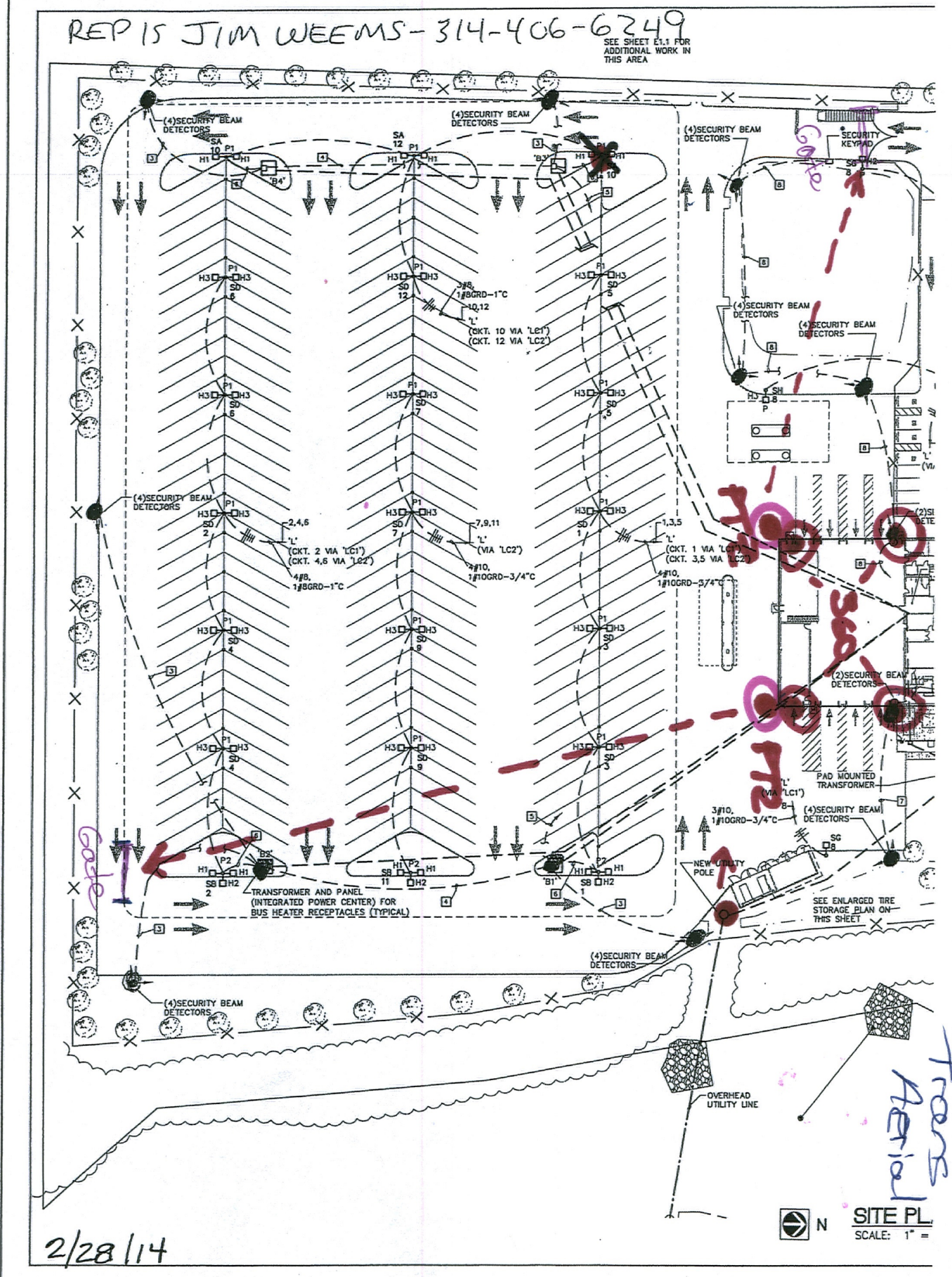




DUESTER ELECTRIC IS TO ADD BOTTOM STRIP TO PHOTO BEAM.  
INTERFACE IS TO CLEAN BEAMS, REALIGN BEAMS AND TE

REP IS JIM WEEEMS - 314-406-6249

SEE SHEET E1.1 FOR  
ADDITIONAL WORK IN  
THIS AREA



S:\112721.000\Elec\E1.0-112721.000.dwg 05/04/10 11:34 tfisher

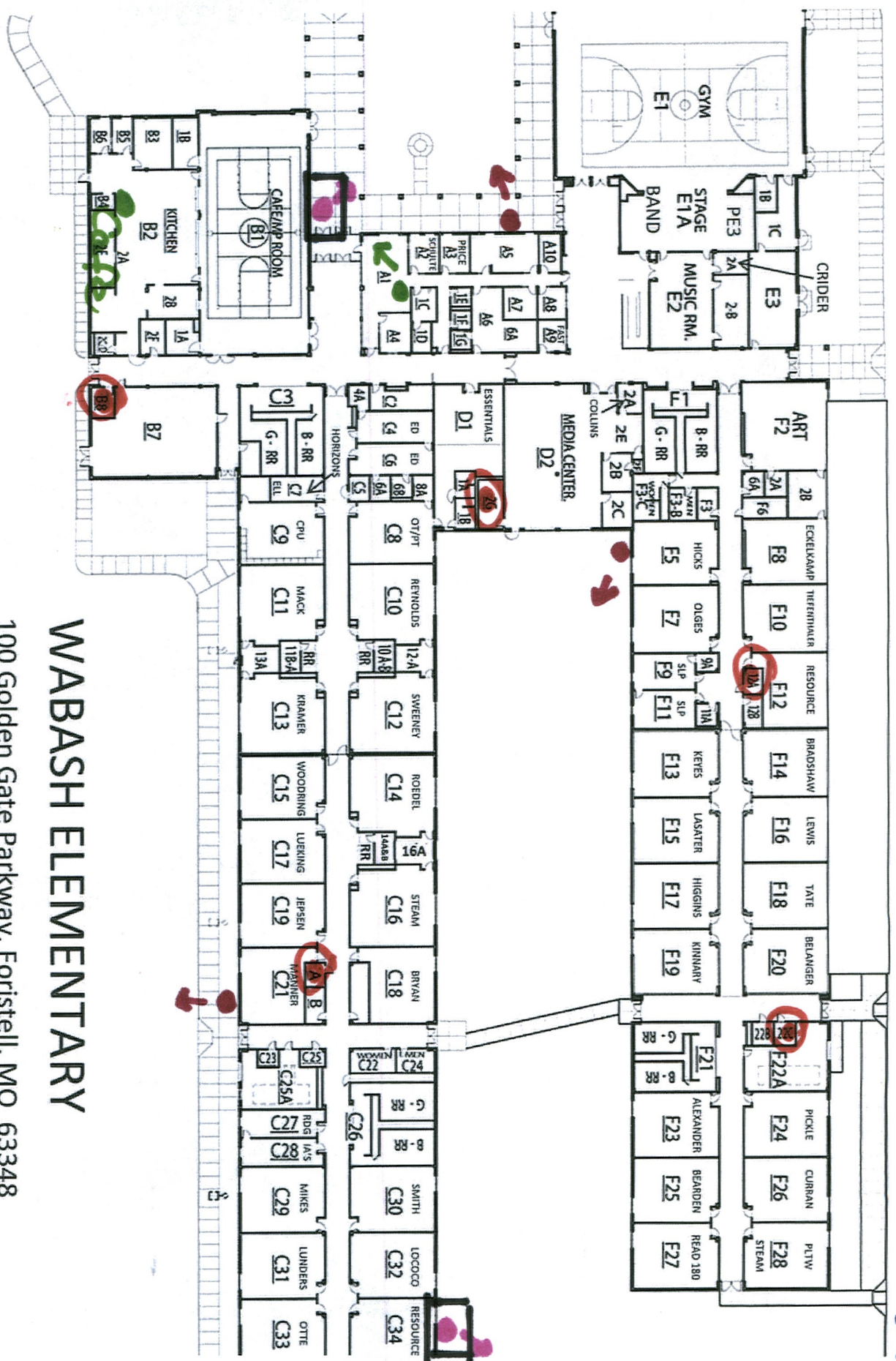
2/28/14

N  
SITE PL  
SCALE: 1" =

Trans Aerial



WDBZ

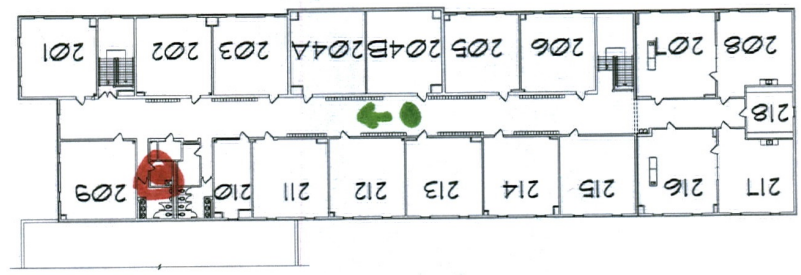


# WABASH ELEMENTARY

100 Golden Gate Parkway, Foristell, MO 63348

swm

UPPER LEVEL



MAIN LEVEL

WENTZVILLE MIDDLE SCHOOL

