



# PERALTA COMMUNITY COLLEGE DISTRICT

## MERRITT COLLEGE NEW LANDSCAPE HORTICULTURE INTERIM HOUSING

### ADDENDA

BID NO. 21-22/11

### Peralta Community College District

333 East 8th Street Oakland, CA 94606

April 6, 2022

### ADDENDUM No. 1

This addendum supersedes items of the original bid documents wherein it is inconsistent with it. All other conditions remain unchanged. The following changes, modifications, corrections, additions, or clarifications shall apply to the contract documents and shall be made a part of and subject to all of the requirements thereof as if originally specified or shown. It is the responsibility of the bidder to review the list of attachments to ensure that the addendum is full and complete. This Addendum modifies the original bid documents for the above project.

**Acknowledge receipt of this addendum in the space provided on Acknowledgement and Signature Form. Failure to do so may subject bidder to disqualification.**

### Revisions/Questions to bid documents:

#### QUESTIONS:

1. What is engineers estimate for the purpose of obtaining bid bonds?

***Response: The Engineers cost estimate is \$550,000.***

2. The SLBE/SELBE form is not in the project manual.

***Response: The SLBE/SELBE is on Page 52 of 340 of the project manual.***

3. Do subconsultants need to be pre-qualified by Quality Bidders?

***Response: The District only requires the General Contractors to be prequalified through Quality Bidders in order to bid on this project. Mechanical, Electrical and Plumbing Subcontractors and other subcontractors are not required to be pre-qualified through Quality Bidders.***

## **BID DAY VIDEO CONFERENCE:**

To join the Bid opening conference meeting, please register via the link below:

When: April 12, 2022, 03:00 PM Pacific Time (US and Canada)

**Register in advance for this meeting:**

[https://cccconfer.zoom.us/meeting/register/tJwlf-mrrDlrGNceZoKRvU5vxM1G\\_rKLhHrP](https://cccconfer.zoom.us/meeting/register/tJwlf-mrrDlrGNceZoKRvU5vxM1G_rKLhHrP)

After registering, you will receive a confirmation email containing information about joining the meeting.

## **DISTRICT CLARIFICATIONS:**

1. Please note revised Front Ends uploaded to Vendor Registry – File Name: MLHIH\_Front Ends\_Bid Set\_20220318\_DSA Submittal. This set will be submitted to DSA to receive DSA stamped approval.
2. The two storage containers shown on drawing A2.01 labeled 32-03 are no longer available and will no longer be included in the site plan.
3. Note the modified section 1.2 A. in Specification 01 11 00 Summary of Work:

### **1.2 SUMMARY OF WORK COVERED BY CONTRACT DOCUMENTS**

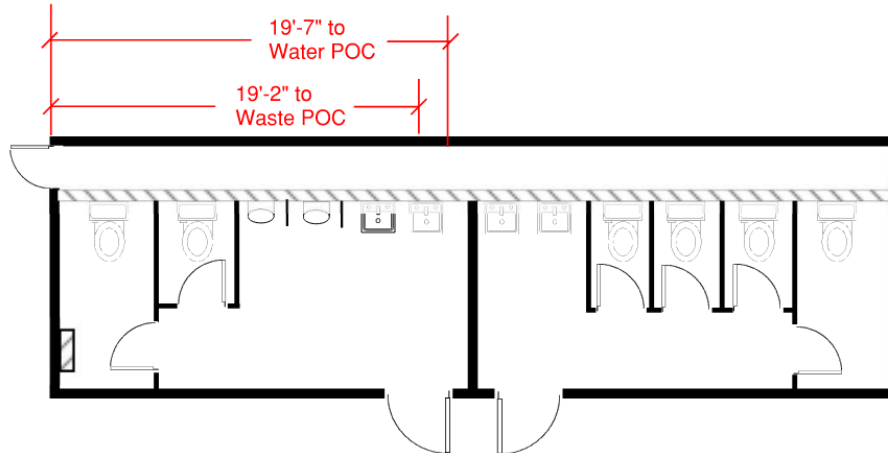
A. The Work of this Contract consists of, but not limited to, the following:  
This project consists of placing DSA approved PC (stockpile) modular units at an interim housing complex comprised of (3) classrooms, (1) office, and (1) multi-stall restroom unit for the Merritt College Landscape Horticulture Program, with all associated site improvements. All buildings are single story. Occupancy classifications include B. Construction type is V-B. Seismic zone E.

The work to be performed under this contract includes the furnishing of all labor, materials, equipment, transportation, services, permits, temporary controls and construction facilities, and all general conditions, seismic requirements, general requirements and incidentals required to complete the work on the project in its entirety as described in the contract documents.

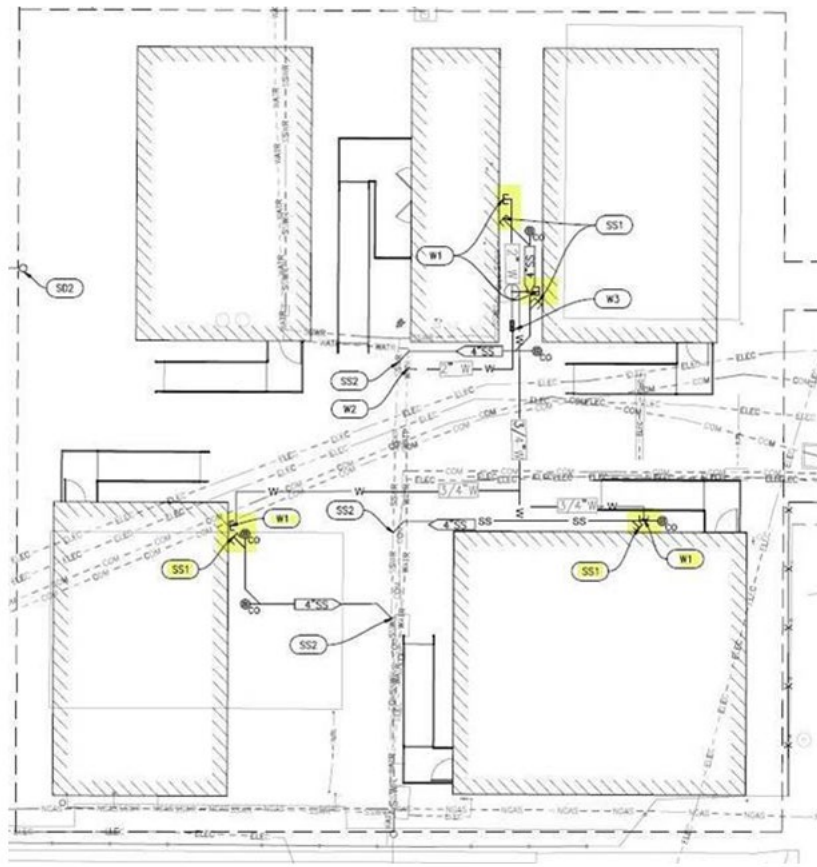
\*\*\*Occupancy Classification “and E” and “fully sprinklered” have been removed.

3. In Specification 00 72 13 General Conditions Section 6.5 Field Office is void in its entirety. The General Contractor is not responsible for providing a temporary office on the site for the District’s exclusive use.

4. Please see the portable restroom 12' x 40' elevation immediately below. The water and sewer point of connection will be above finished floor.



Per the next image below, the points of connect for water and sewer for the classrooms, the points of connection will be done on the side walls of each classroom. The water and sewer connections will be above finished floor as well. Because these points of connection will be on the side wall Mobile Modular cannot provide the stub outs to the General Contractor to connect. The reason being is because the stub outs will make the modular sections over width when being transported to the site. Therefore, Mobile Modular will ship the stub outs "loose" so the General Contractor can install, then connect to water and sewer.



5. Three ceiling mounted short throw projectors and wall mounted screens at existing Horticulture facility (3 classrooms) on campus to be disconnected and removed from classrooms for use in new portables. Coordinate delivery of equipment with District IT.
6. Workstation partitions pick up to be coordinated with campus maintenance crew and delivered to the job site and installed in office portable when the new portables are on site.

