



**SOLICITATION 20-008
ADDENDUM #1**

PROJECT / SOLICITATION NUMBER: 20-008

DUE DATE: 12/20/19

PROJECT NAME: Tennis Court Resurfacing

ADDENDUM NO: 1

ISSUE DATE OF ADDENDUM: 12/12/19

TO ALL SUPPLIERS: This addendum is being issued for the purposes of modifying the original Solicitation, through addition, deletion, clarification or correction as outlined herein. The information provided in this addendum supersedes any information previously provided in the referenced document(s). This addendum and the information contained herein shall be used in the preparation of any response submitted by the Supplier and shall become an integral part of the contract documents for any contract awarded for the project specified. Please inform all concerned that the Solicitation is modified by this Addendum.

QUESTIONS:

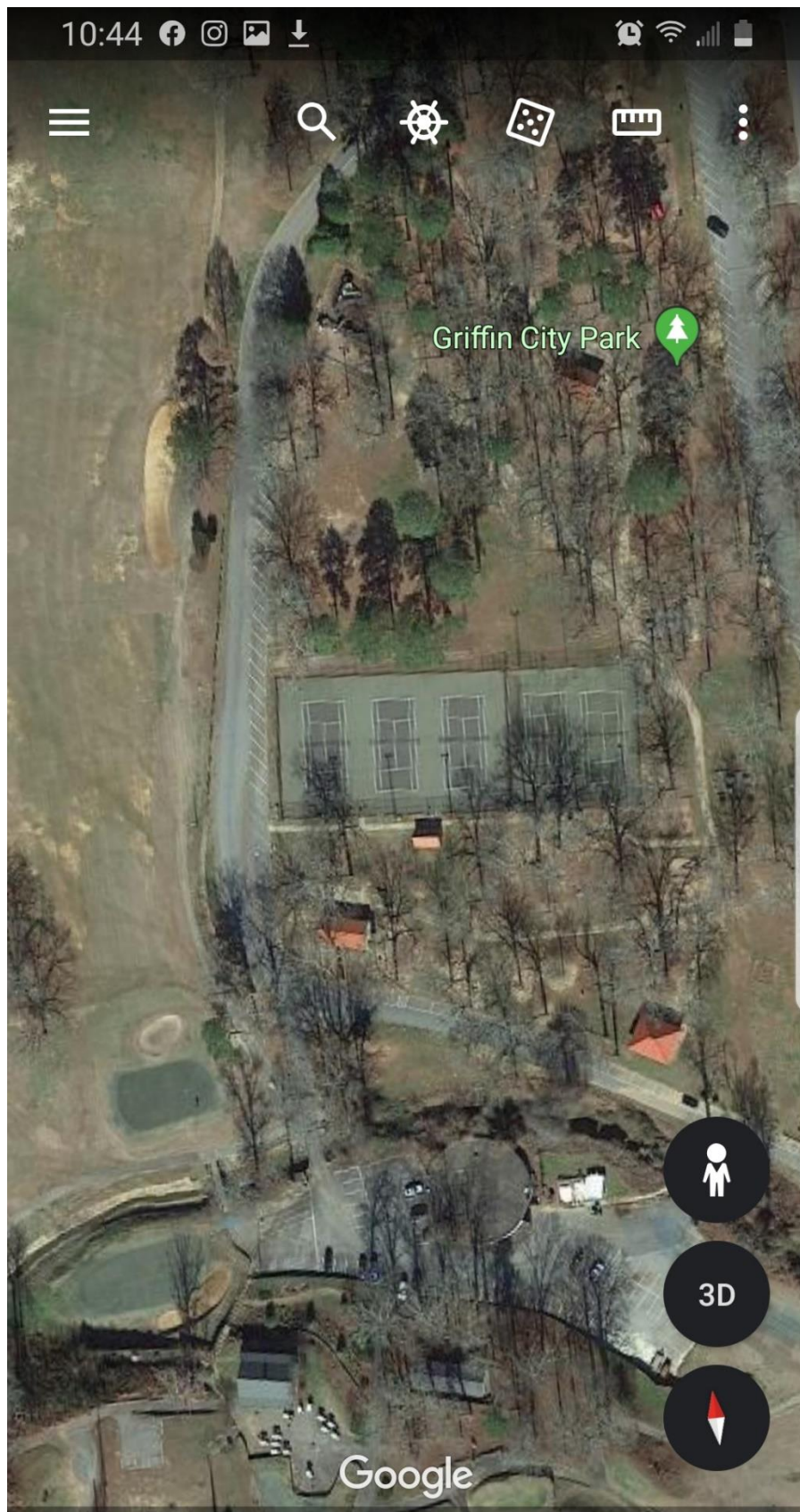
Q1: Can you confirm the number of courts? The solicitation states five (5) courts, but I see six (6).

A1: There are only **FIVE** (5) courts, which are located in City Park on Camp Northern Road in Griffin, Georgia. An aerial map of the area is attached.

Q2: Can you approve a product as an acceptable substitute on the Resurfacing project?

A2: The project manager is not available to test all products that everyone would like to be considered. If you feel the products you recommend are compatible and are of equal or better quality, definitely submit them. Simply include a MSDS and documentation to show the quality of the product (as equal or better). If this product has been successfully used on other projects, please note the project in which it was used, along with a contact. Having that reference that can confirm proven quality and will endorse the product.

NOTE: Please check our website prior to your submittal to ensure there is no additional addenda. The direct link to that webpage is <https://vrapp.vendorregistry.com/Bids/View/Bid/1a436be7-e450-4db1-a11f-82ede5a5e926>. Should an addendum need to be issued within 72 hours of the deadline, the deadline will be extended.



END