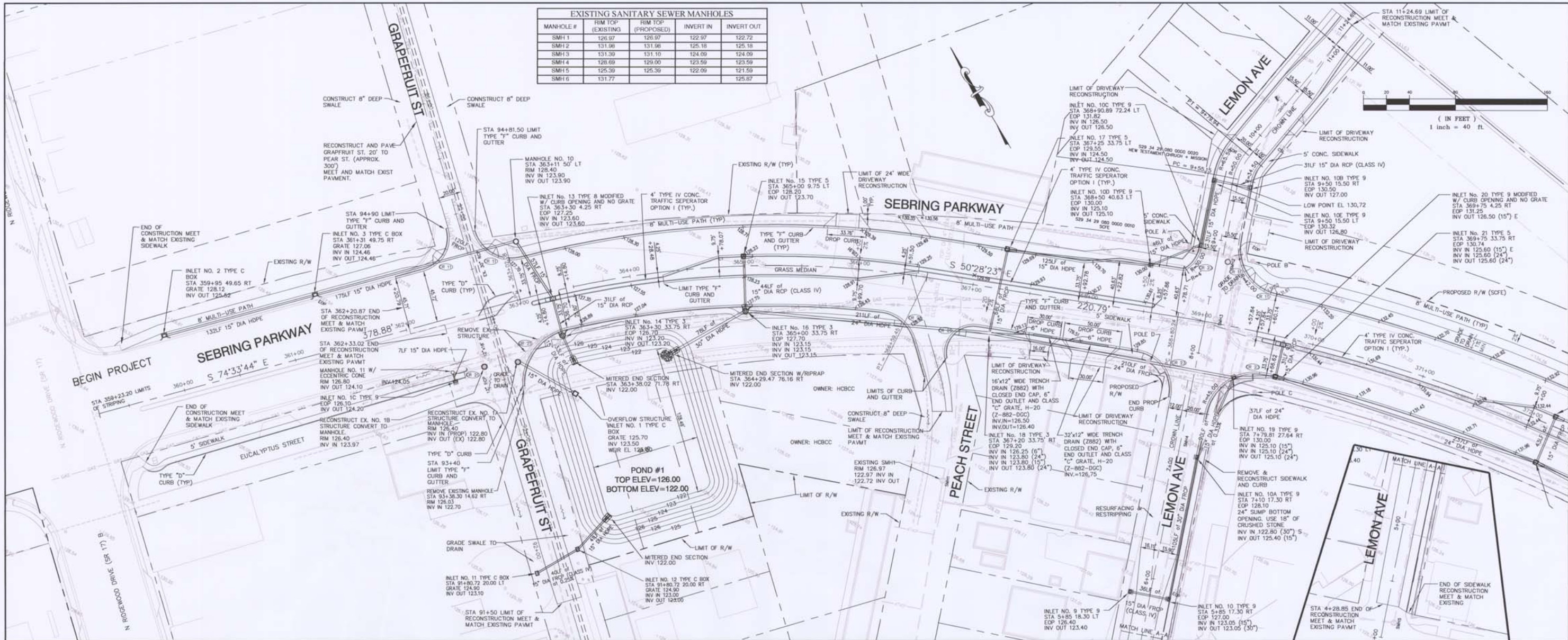
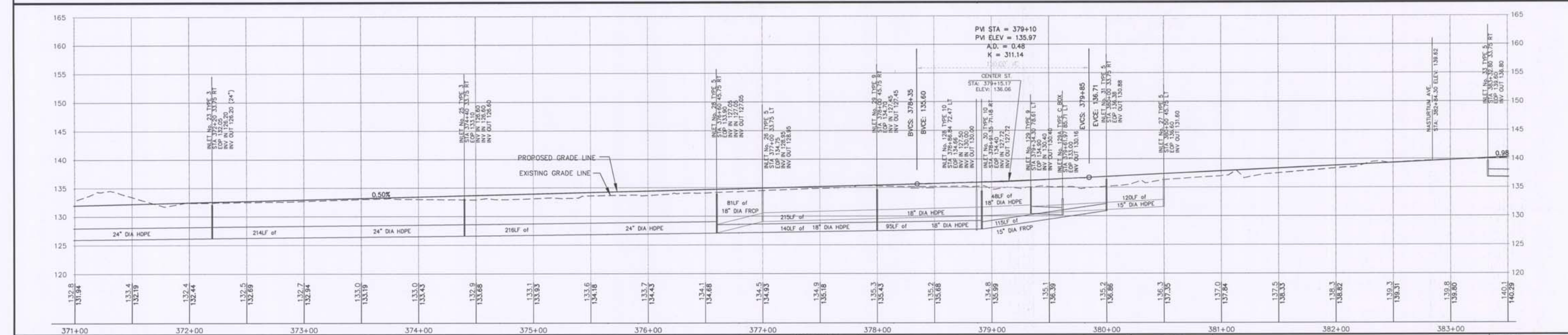
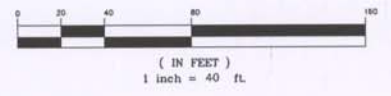
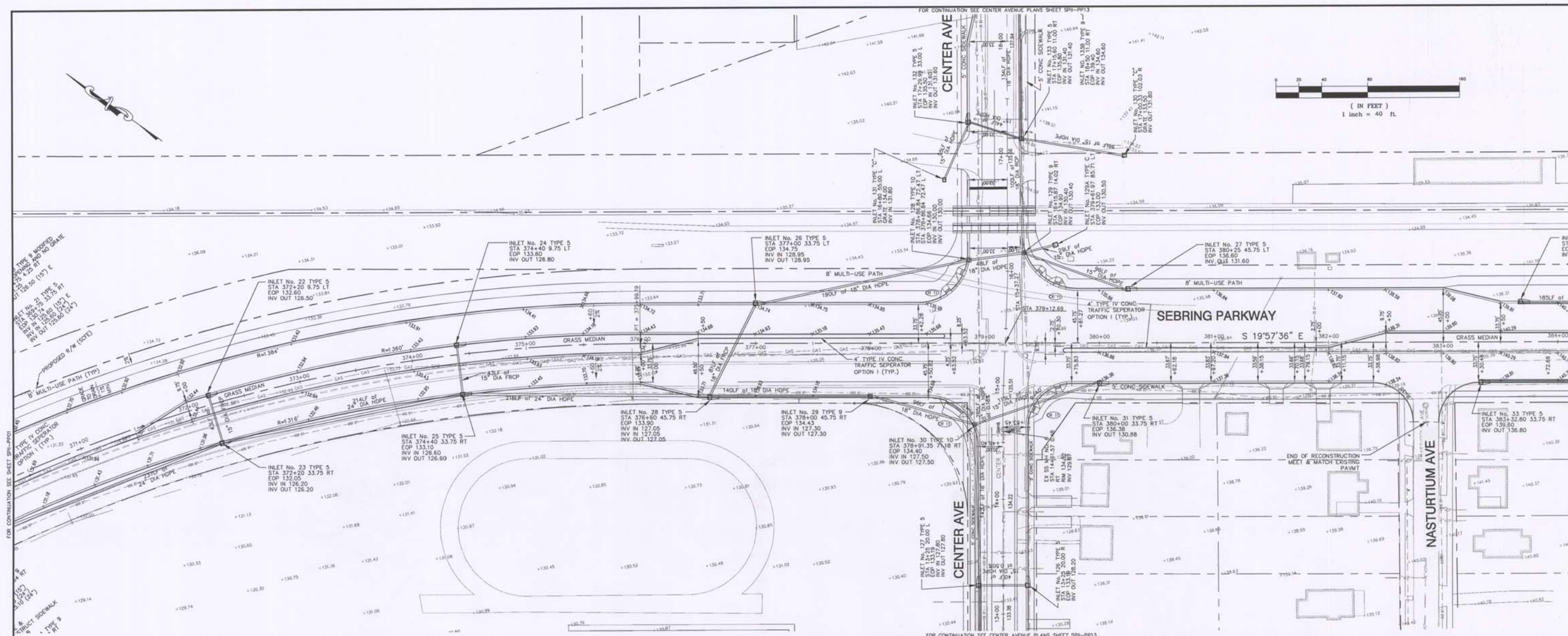



EXISTING SANITARY SEWER MANHOLES				
MANHOLE #	RIM TOP (EXISTING)	RIM TOP (PROPOSED)	INVERT IN	INVERT OUT
SMH1	126.97	126.97	122.97	122.72
SMH2	131.98	131.98	125.18	125.18
SMH3	131.39	131.10	124.09	124.09
SMH4	126.69	129.00	123.59	123.59
SMH5	125.39	125.39	122.09	121.59
SMH6	131.77			125.67

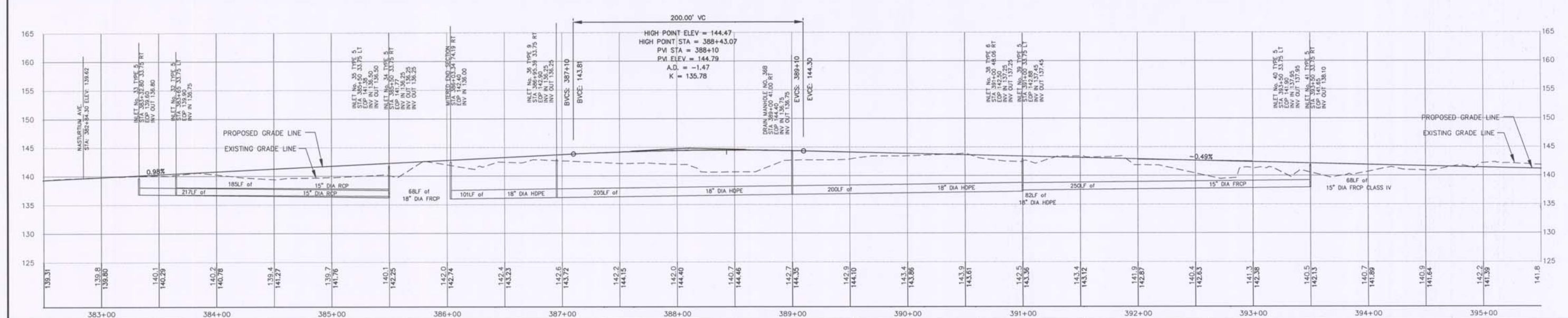
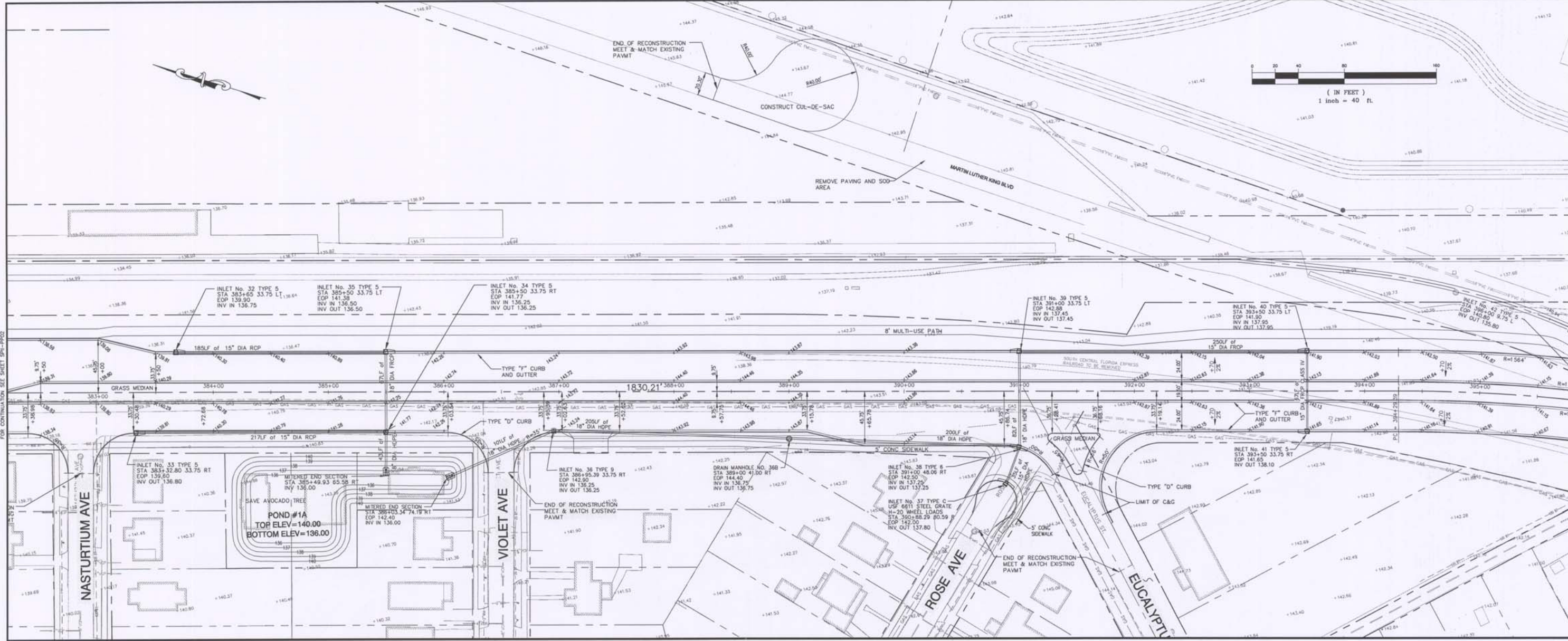




DATE	BY	DESCRIPTION	DATE	BY	DESCRIPTION
12-18-2007	TH	CHANGE INVERT ELEVATIONS ON INLETS 29 AND 30			
01-16-2008	TH	MOVE EAST SIDEWALK			

DESIGNED BY: TH/RO/DN	<b>HIGHLANDS COUNTY ENGINEERING DEPARTMENT</b> 505 S. COMMERCE AVENUE SEBRING, FLORIDA 33870	SCALE: HORIZ. 1"=40' VERT. 1"=8'	
CHECKED BY: E. NORTIUS, P.E.		DRAWING NO. SPII-PP02	
IN CHARGE: R. GAVARRETE, P.E.		REV. 0	
DATE: 03-11-2008		APPROVED BY: RAMON GAVARRETE, P.E. FLORIDA REGISTRATION NO.: 51372	DATE: 4-2-08
			 SEBRING PARKWAY - PHASE II SEBRING PARKWAY PLAN AND PROFILE STA 372+00 TO STA 383+00 APR 10 2008 SHEET 18 OF 74



DATE	BY	DESCRIPTION	DATE	BY	DESCRIPTION
01-16-2008	TH	MOVE EAST SIDEWALK, ADD MEDIAN AT VIOLET, FIX ELEVATIONS			
03-11-2008	TH	ADD MH NO. 368 CHANGE PIPE ON INLET NO. 40			

DESIGNED BY: RD/TH  
 DRAWN BY: TH/RD/DN  
 CHECKED BY: E. NORTELLUS, P.E.  
 IN CHARGE: R. GAVARRETE, P.E.  
 DATE: 03-11-2008

**HIGHLANDS COUNTY**  
**ENGINEERING DEPARTMENT**  
 505 S. COMMERCE AVENUE  
 SEBRING, FLORIDA 33870

APPROVED BY: RAMON GAVARRETE, P.E.  
 FLORIDA REGISTRATION NO.: 51372

DATE: 4-4-2008



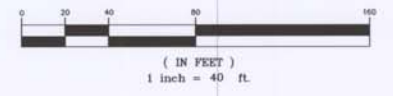
**SEBRING PARKWAY - PHASE II**  
 SEBRING PARKWAY  
 PLAN AND PROFILE  
 STA 383+00 TO STA 395+00

SCALE:  
 HORIZ. 1"=40'  
 VERT. 1"=8'

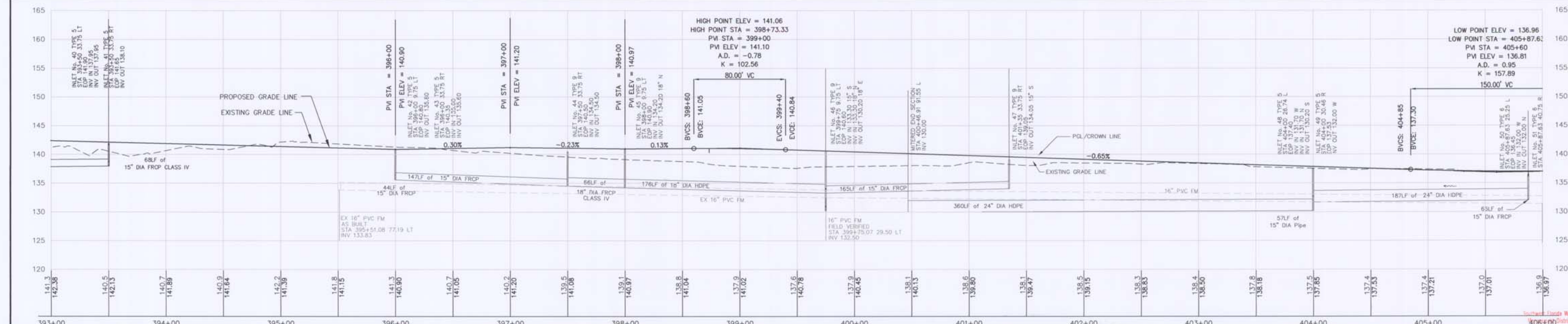
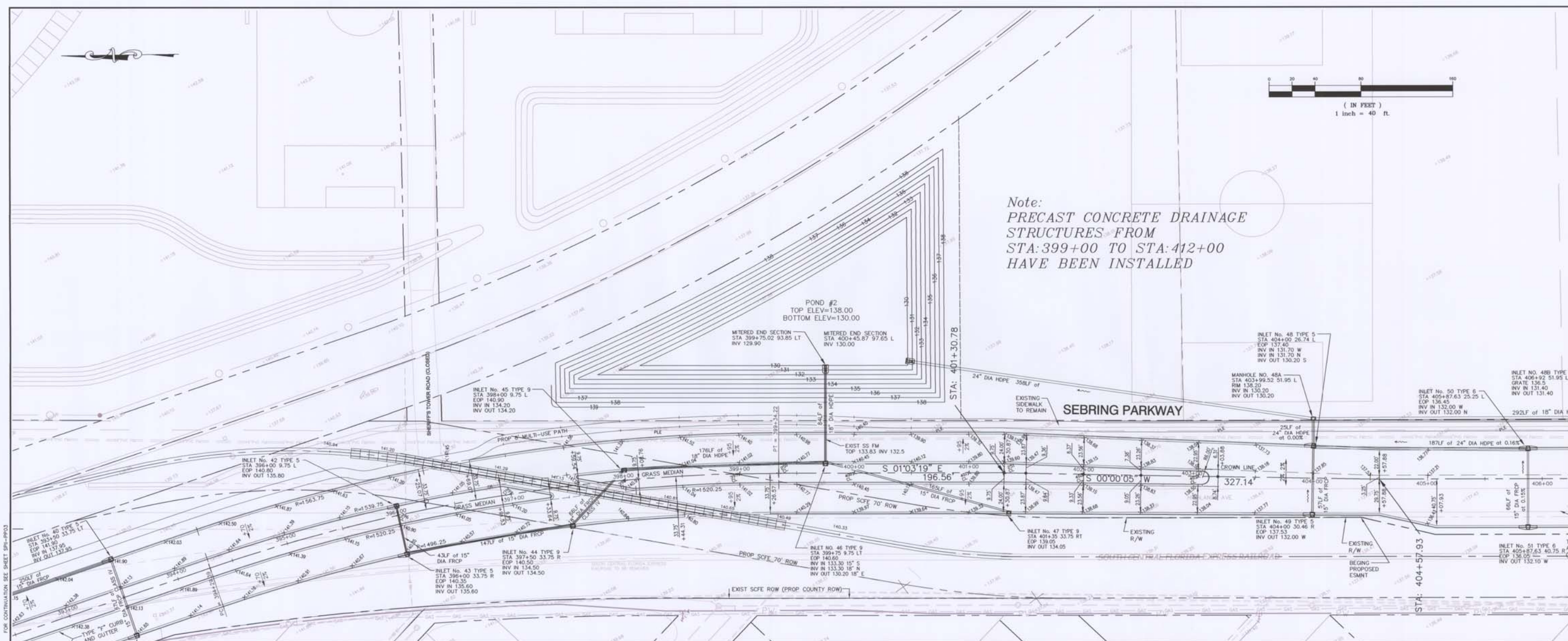
DRAWING NO. SPII-PP03  
 REV. 0

APR 10 2008

SHEET 19 OF 74



Note:  
 PRECAST CONCRETE DRAINAGE  
 STRUCTURES FROM  
 STA:399+00 TO STA:412+00  
 HAVE BEEN INSTALLED



DATE	BY	DESCRIPTION	DATE	BY	DESCRIPTION
7-18-2007	TH	CHANGE POND SIZE AND MITERED END LOCATION			
7-26-2007	TH	ADD MANHOLE NO. 48A AND MOVE INLET NO. 48 AND NO. 49 TO STATION 404+00			
8-15-2007	TH	ADD DRAINAGE FROM STA: 396+00 TO STA: 401+50			
03-11-2008	TH	CHANGE PIPE FROM INLET NO. 44			
06-05-2008	TH	SWFWD COMMENTS			

DESIGNED BY: RD/TH  
 DRAWN BY: TH/RD/DN  
 CHECKED BY: E. NORTELLUS, P.E.  
 IN CHARGE: R. GAVARRITE, P.E.  
 DATE: 03-11-2008

**HIGHLANDS COUNTY**  
**ENGINEERING DEPARTMENT**  
 505 S. COMMERCE AVENUE  
 SEBRING, FLORIDA 33870

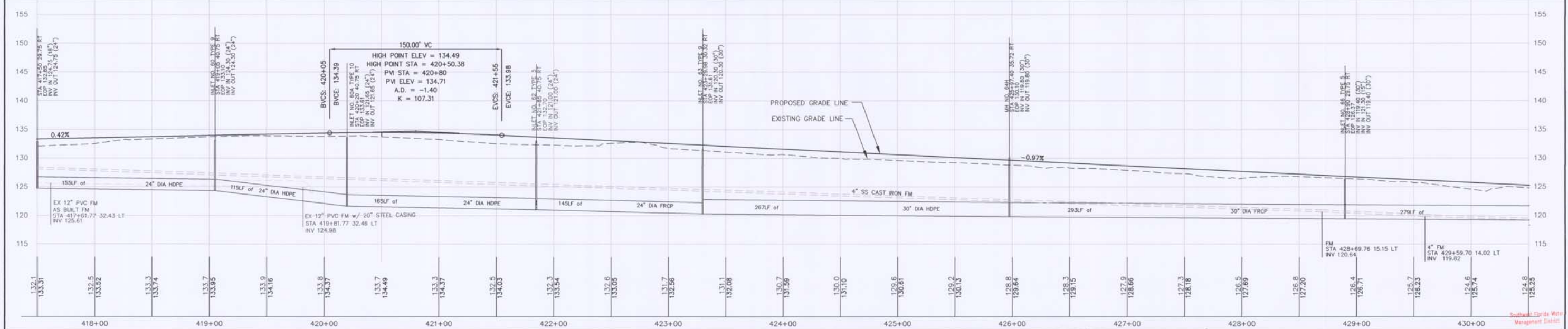
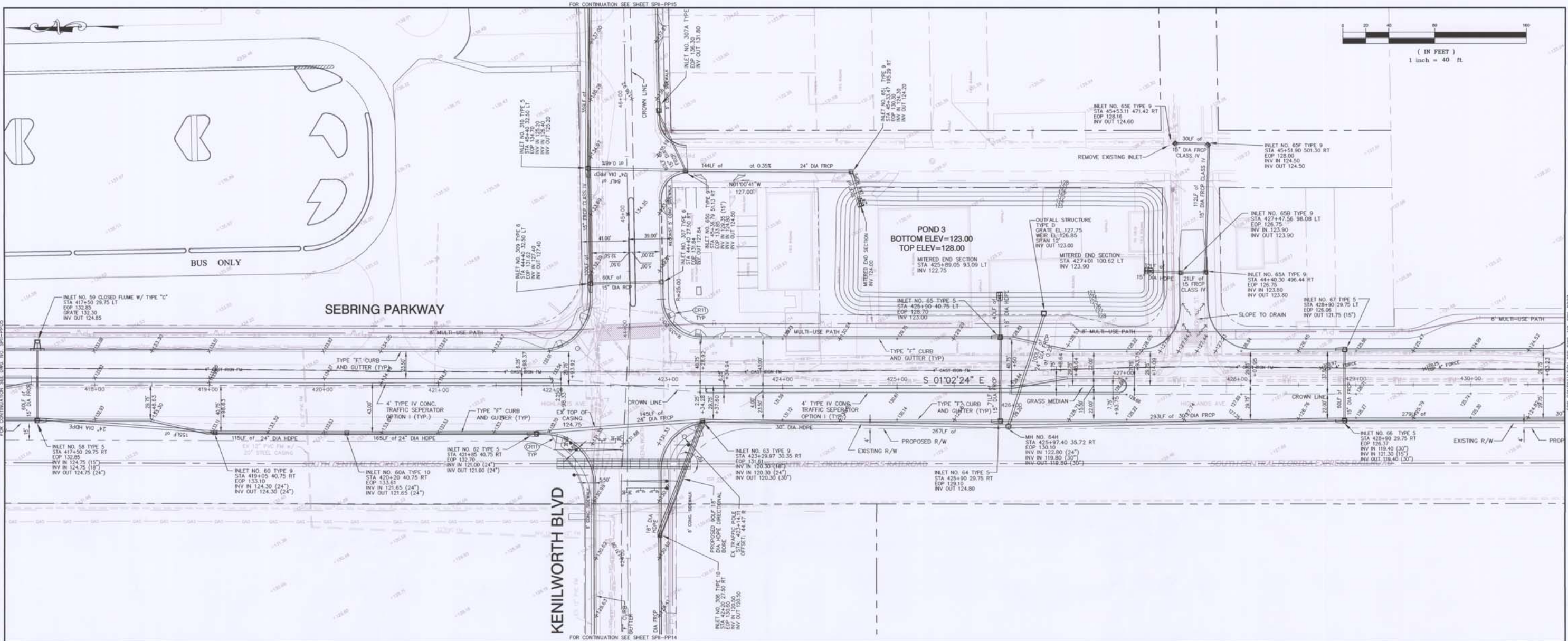
APPROVED BY: RAMON GAVARRITE, P.E.  
 FLORIDA REGISTRATION NO.: 51372

DATE: 6-5-2008

**SEBRING PARKWAY - PHASE II**  
 SEBRING PARKWAY  
 PLAN AND PROFILE  
 STA 393+00 TO STA 406+00

SCALE: JUN 09 2008  
 HORIZ. 1"=40'  
 VERT. 1"=10'  
 DRAWING NO. SPII-PP04  
 REV. 0  
 SHEET 20 OF 74





REVISIONS		REVISIONS	
DATE	BY	DATE	BY
03-11-2008	TH	05-02-2008	TH
04-8-2008	TH	06-04-2008	TH
04-24-2008	TH	06-05-2008	TH
04-24-2008	TH		
05-02-2008	TH		

DESIGNED BY: RD/TH  
 DRAWN BY: TH/RD/DN  
 CHECKED BY: E. NORTELUS, P.E.  
 IN CHARGE: R. GAVARRETE, P.E.  
 DATE: 03-11-2008

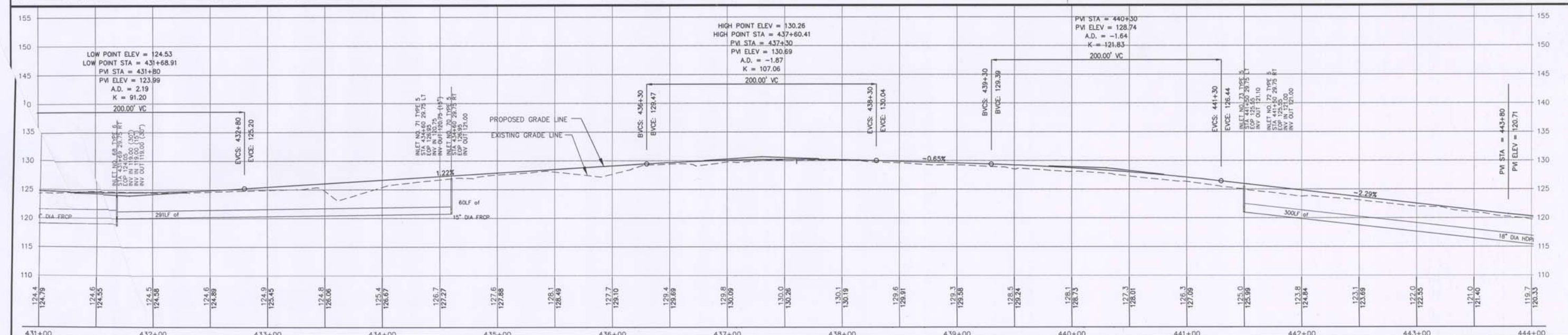
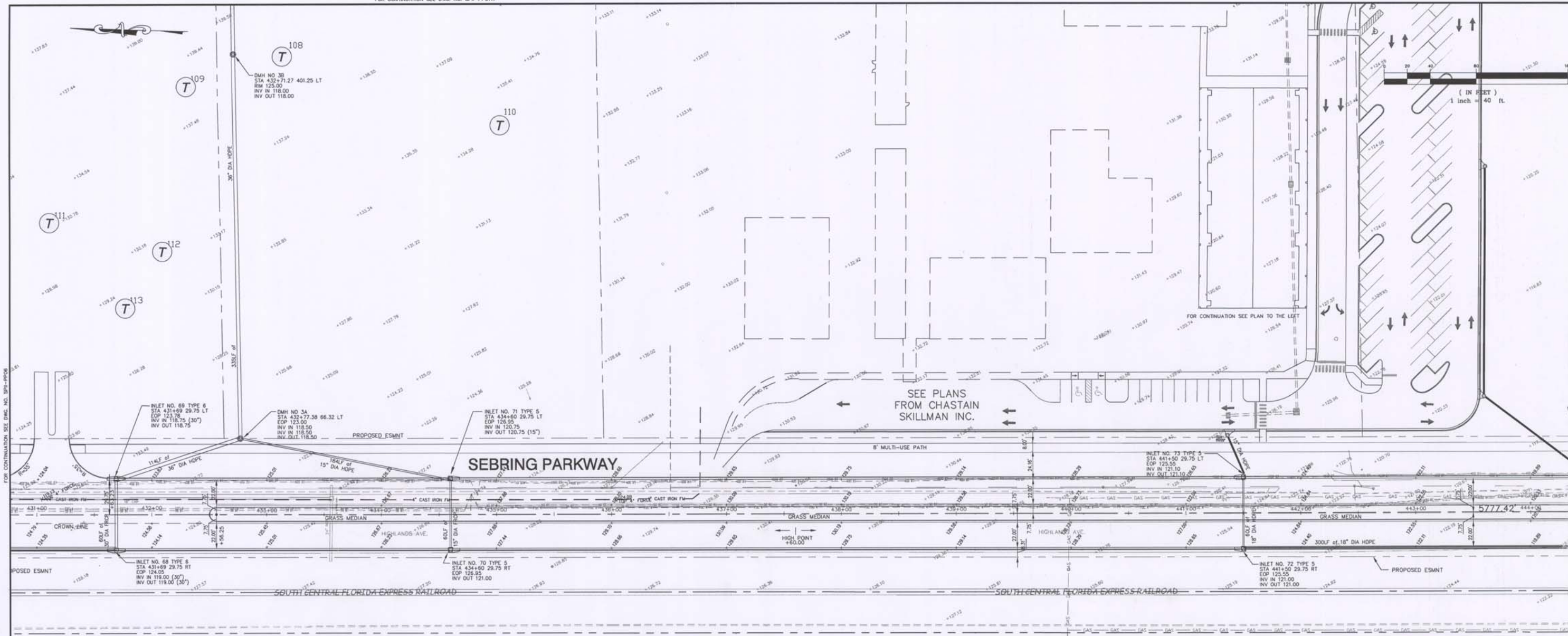
**HIGHLANDS COUNTY  
 ENGINEERING DEPARTMENT**  
 505 S. COMMERCE AVENUE  
 SEBRING, FLORIDA 33870

APPROVED BY: RAMON GAVARRETE, P.E.  
 FLORIDA REGISTRATION NO.: 51372

DATE: 6-5-08

**SEBRING PARKWAY - PHASE II**  
 SEBRING PARKWAY  
 PLAN AND PROFILE  
 STA 417+50 TO STA 430+00

SCALE: JUN 09 2008  
 HORIZ. 1"=40'  
 VERT. 1"=4'  
 DRAWING NO. SPII-PP06  
 REV. 0  
 SHEET 22 OF 74



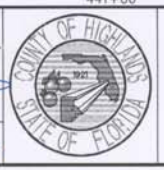
REVISIONS		REVISIONS	
DATE	BY	DATE	BY
03-11-2008	TH		
03-12-2008	TH		

DESIGNED BY: RD/TH  
 DRAWN BY: TH/RD/DN  
 CHECKED BY: E. NORTELU, P.E.  
 IN CHARGE: R. GAVARRETE, P.E.  
 DATE: 03-11-2008

**HIGHLANDS COUNTY ENGINEERING DEPARTMENT**  
 505 S. COMMERCE AVENUE  
 SEBRING, FLORIDA 33870

APPROVED BY: RAMON GAVARRETE, P.E.  
 FLORIDA REGISTRATION NO.: 51372

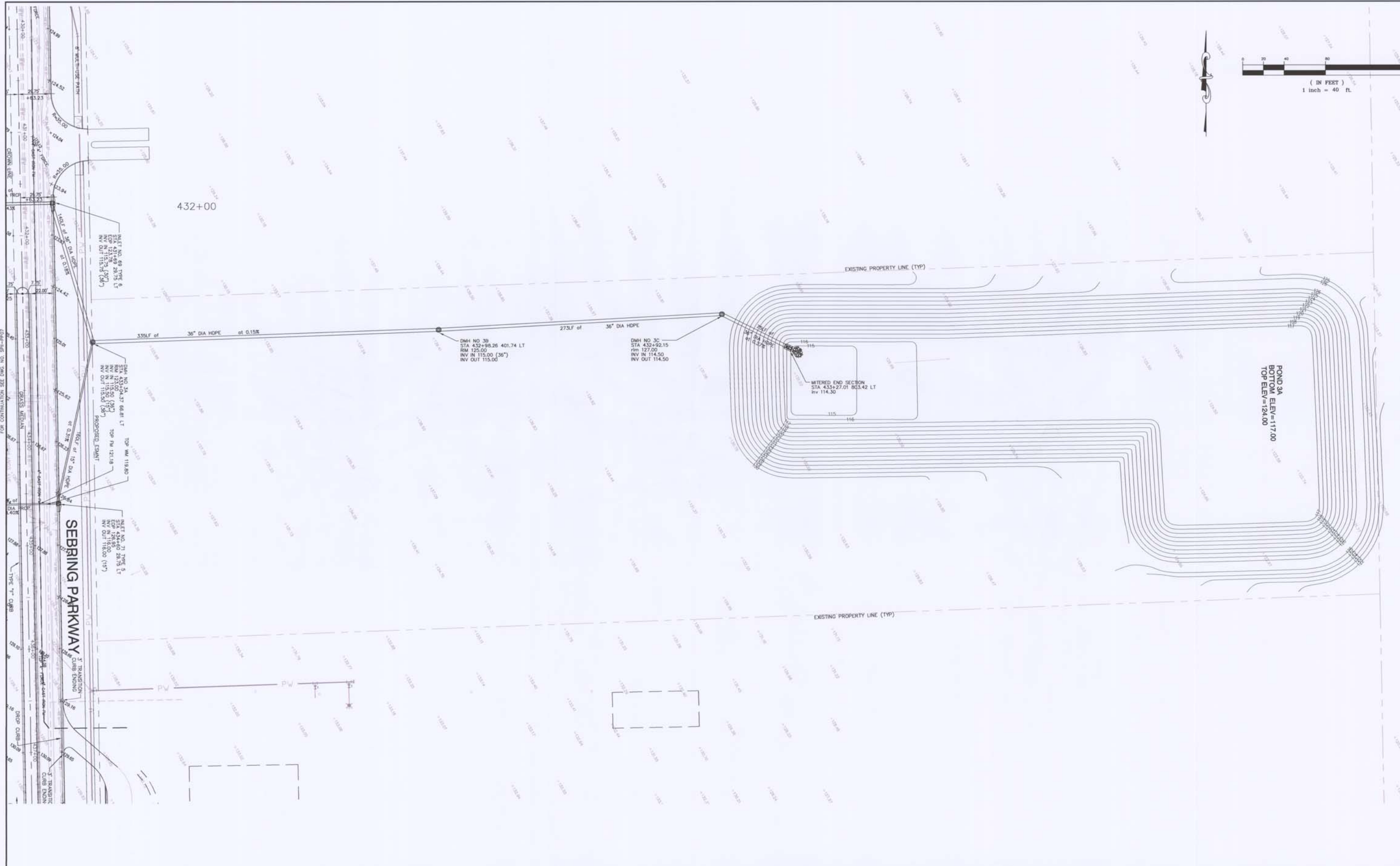
DATE: 4-2-2007



**SEBRING PARKWAY - PHASE II**  
 SEBRING PARKWAY  
 PLAN AND PROFILE  
 STA 431+00 TO STA 444+00

SCALE: HORIZ. 1"=40'  
 VERT. 1"=8'

DRAWING NO. SPII-PP07  
 APR 10 2007  
 SHEET 23 OF 74



FOR CONTINUATION SEE DWG. NO. SPI-PP07

SEBRING PARKWAY 3" TRANSITION CURB ENDING

REVISIONS					
DATE	BY	DESCRIPTION	DATE	BY	DESCRIPTION
03-11-2008	TH	NEW SHEET			
03-28-2008	TH	TURN OFF POINTS			
05-15-2008	TH	LOWER MANHOLES 3A, 3B AND 3C			
06-4-2008	TH	CHANGE POND SIZE AND MOVE MH 3C			
06-05-2008	TH	SFWMD COMMENTS			

DESIGNED BY: RD/TH  
 DRAWN BY: TH/RD/DN  
 CHECKED BY: E. NORTELUS, P.E.  
 IN CHARGE: R. GAVARRETE, P.E.  
 DATE: 03-11-2008

**HIGHLANDS COUNTY ENGINEERING DEPARTMENT**  
 505 S. COMMERCE AVENUE  
 SEBRING, FLORIDA 33870

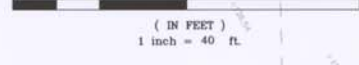
APPROVED BY: RAMON GAVARRETE, P.E.  
 FLORIDA REGISTRATION NO.: 51372

DATE: 6-5-2008

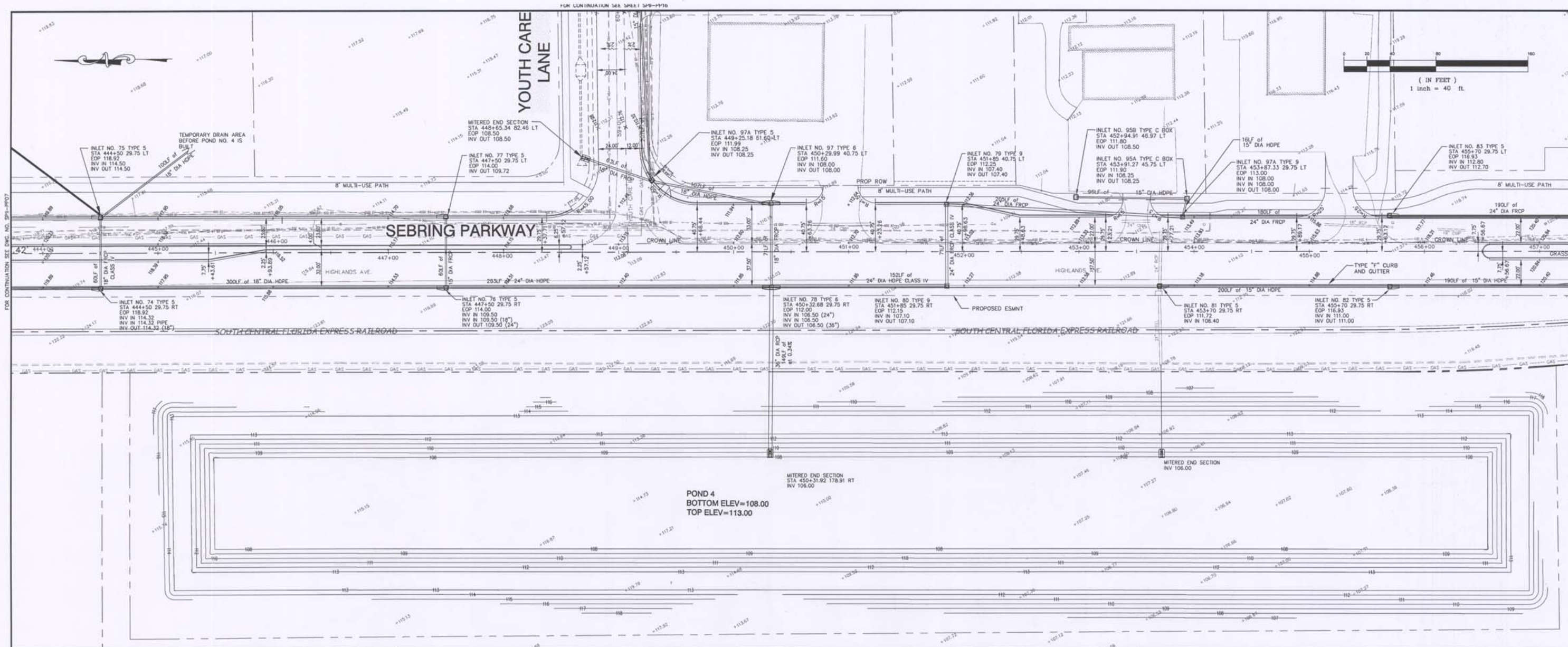


**SEBRING PARKWAY - PHASE II**  
 SEBRING PARKWAY  
 PLAN  
 POND 3A

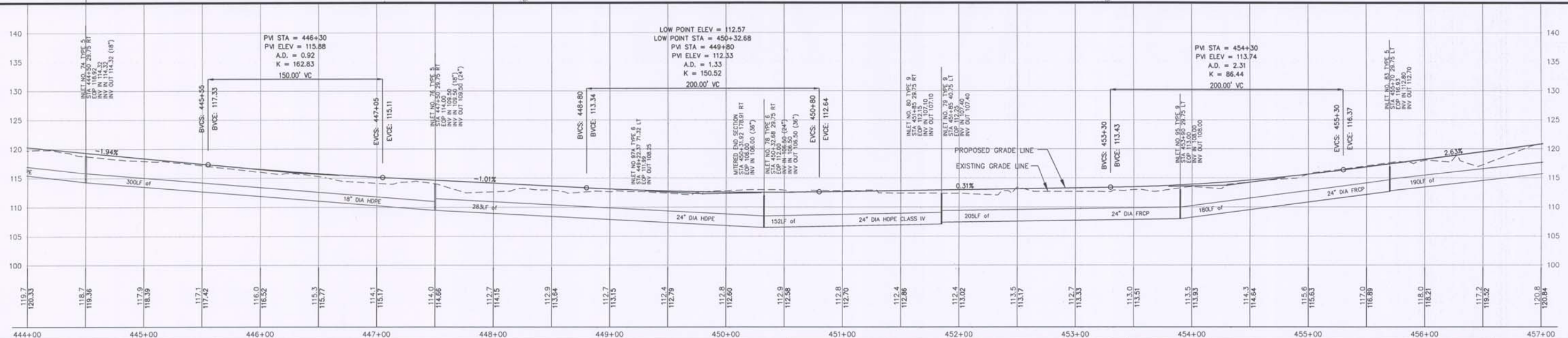
SCALE: HORIZ. 1"=40'	REV. 0
VERT. 1"=8'	
DRAWING NO. SPI-PP07A	SHEET 24 OF 74







POND 4  
 BOTTOM ELEV=108.00  
 TOP ELEV=113.00



DATE	BY	DESCRIPTION	DATE	BY	DESCRIPTION
03-11-2008	TH	CHANGE INLETS 75, 76, 79, 80, 95, 95A, 95B, 97 AND 97A. REMOVE MES AT STA 452+00 AND INLET 96			

DESIGNED BY: RD/TH  
 DRAWN BY: TH/RD/DN  
 CHECKED BY: E. NORTELUS, P.E.  
 IN CHARGE: R. GAVARRETE, P.E.  
 DATE: 03-11-2008

**HIGHLANDS COUNTY ENGINEERING DEPARTMENT**  
 505 S. COMMERCE AVENUE  
 SEBRING, FLORIDA 33870

APPROVED BY: RAMON GAVARRETE, P.E.  
 FLORIDA REGISTRATION NO.: 51372

DATE: 4/2/08

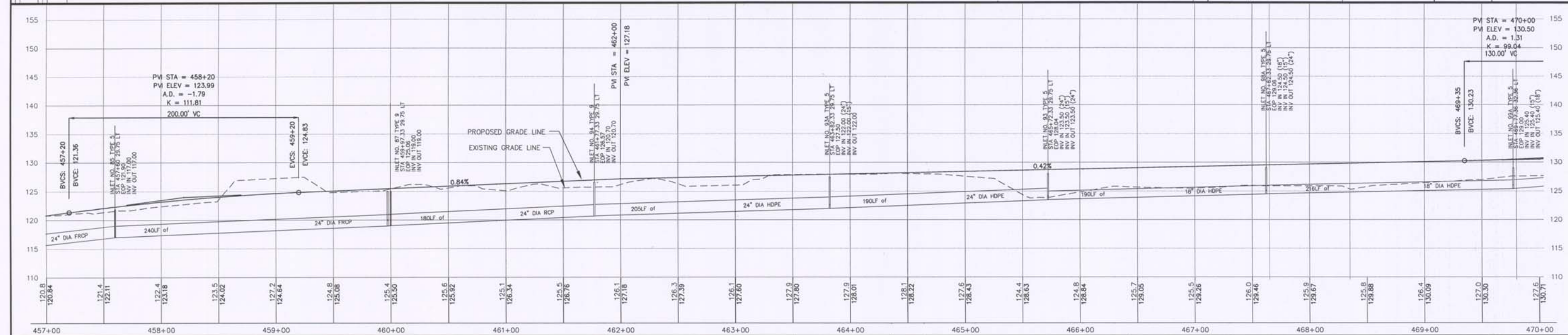
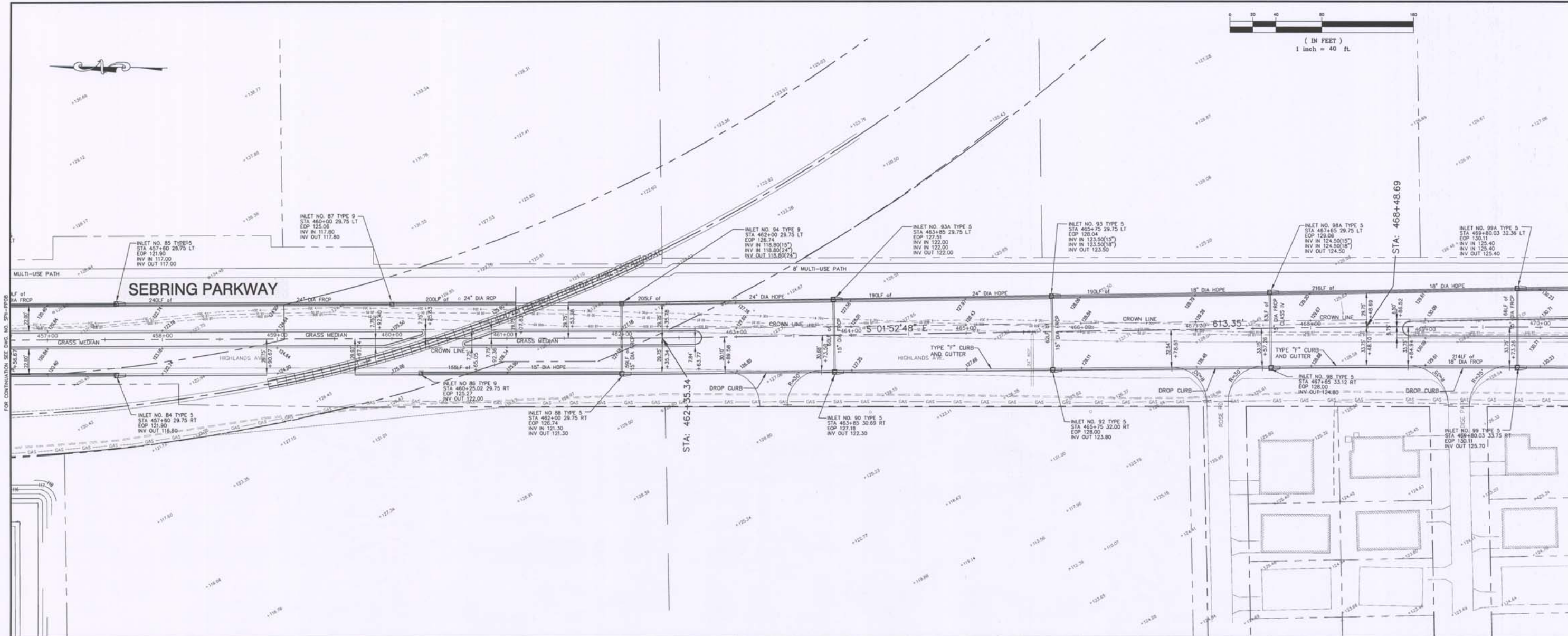
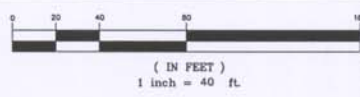


**SEBRING PARKWAY - PHASE II**  
 SEBRING PARKWAY  
 PLAN AND PROFILE  
 STA 444+00 TO STA 457+00

SCALE: HORIZ. 1"=40'  
 VERT. 1"=8'

DRAWING NO. SPII-PP08  
 SHEET 25 OF 74

APR 10 2008  
 RECEIVED



DATE	BY	DESCRIPTION	DATE	BY	DESCRIPTION
03-11-2008	TH	CHANGED PROFILE AND SPOT ELEVATIONS FROM STA 462+00 TO 470+00. CHANGE INLETS 85, 87, 88, 90, 92, 93, 93A, 94, 95, 98A, 99 AND 99A.			

DESIGNED BY: RD/TH  
 DRAWN BY: TH/RD/DN  
 CHECKED BY: E. NORTELLUS, P.E.  
 IN CHARGE: R. GAVARRETE, P.E.  
 DATE: 03-11-2008

**HIGHLANDS COUNTY  
 ENGINEERING DEPARTMENT**  
 505 S. COMMERCE AVENUE  
 SEBRING, FLORIDA 33870

APPROVED BY: RAMON GAVARRETE, P.E.  
 FLORIDA REGISTRATION NO.: 51372

DATE: 4-4-2009

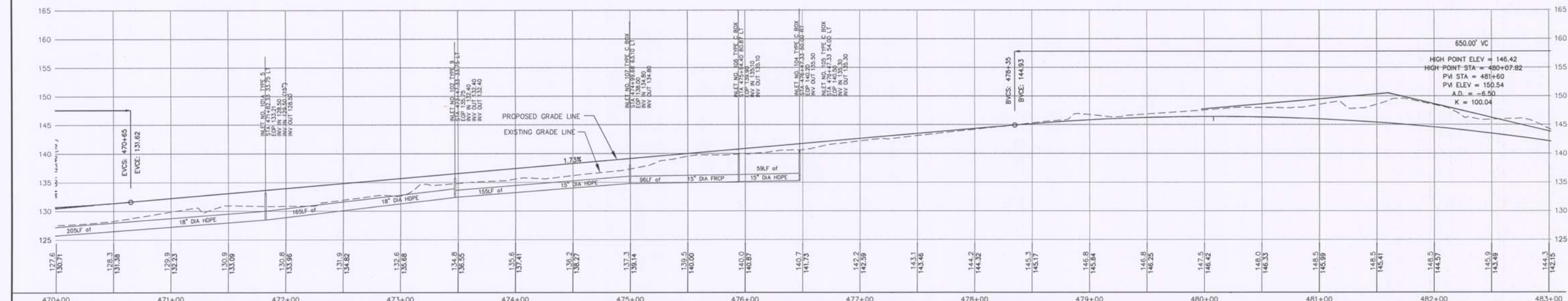
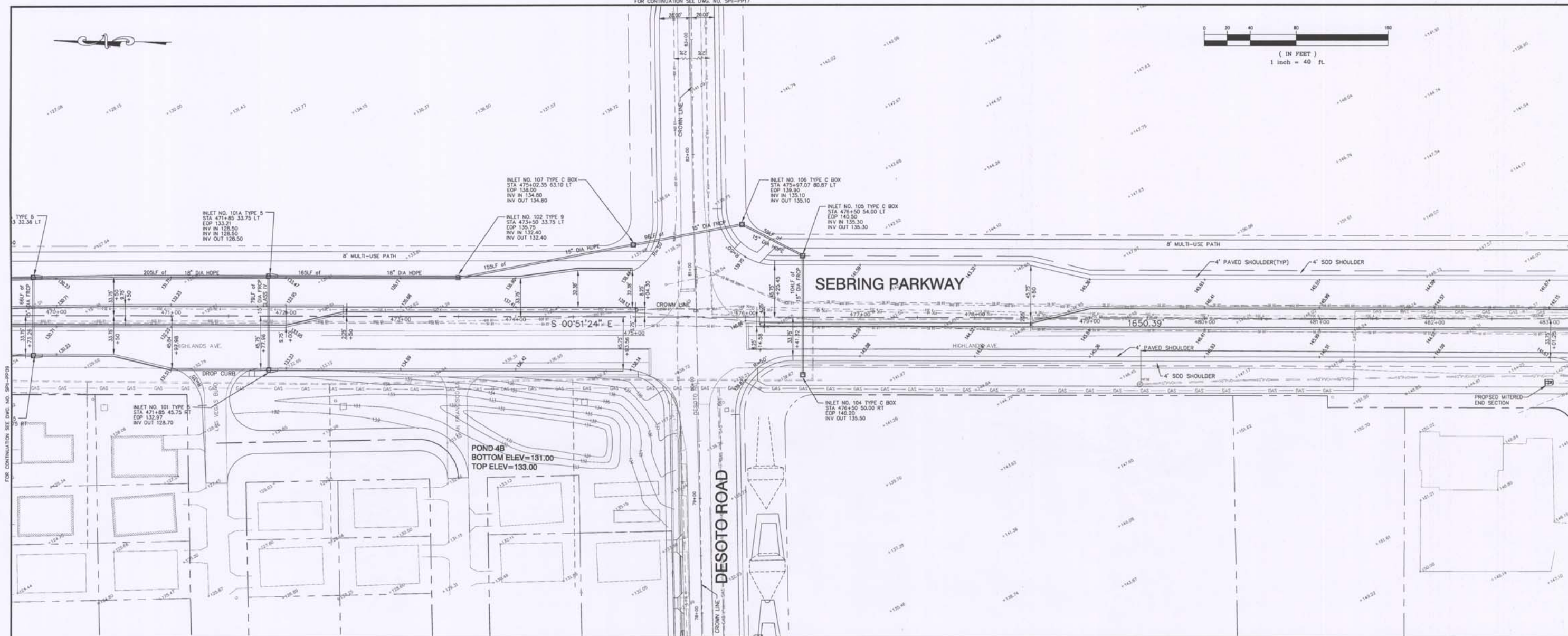
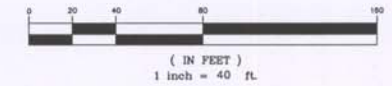


**SEBRING PARKWAY - PHASE II**  
 SEBRING PARKWAY  
 PLAN AND PROFILE  
 STA 457+00 TO STA 470+00

SCALE:  
 HORIZ. 1"=40'  
 VERT. 1"=8'

DRAWING NO. SPII-PP09  
 REV. 0

APR 10 2009  
 RECEIVED  
 SHEET 26 OF 74



REVISIONS		
DATE	BY	DESCRIPTION
03-11-2008	TH	MODIFY POND 4B. REMOVE MES AT STA 471+85 AND INLET 103. CHANGE INLETS 101, 101A, 102, 104, 105, 106 AND 107

REVISIONS		
DATE	BY	DESCRIPTION

DESIGNED BY:  
RD/TH

DRAWN BY:  
TH/RD/DN

CHECKED BY:  
E. NORTELLUS, P.E.

IN CHARGE:  
R. CAVARRETE, P.E.

DATE:  
03-11-2008

**HIGHLANDS COUNTY  
ENGINEERING DEPARTMENT**  
505 S. COMMERCE AVENUE  
SEBRING, FLORIDA 33870

APPROVED BY: RAMON CAVARRETE, P.E.  
FLORIDA REGISTRATION NO.: 51372

DATE:  
4-4-2008



**SEBRING PARKWAY - PHASE II**  
SEBRING PARKWAY  
PLAN AND PROFILE  
STA 470+00 TO STA 483+00

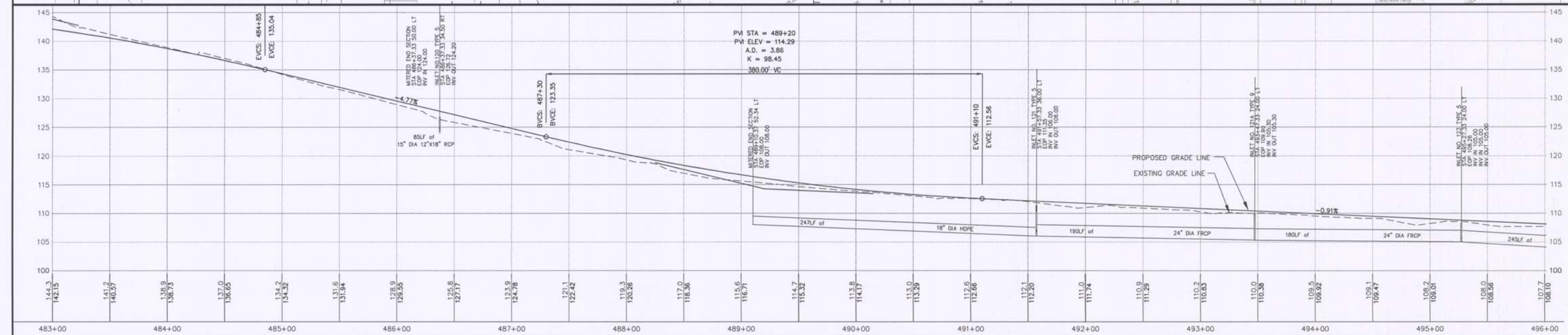
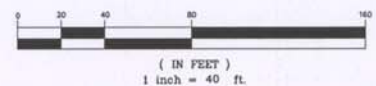
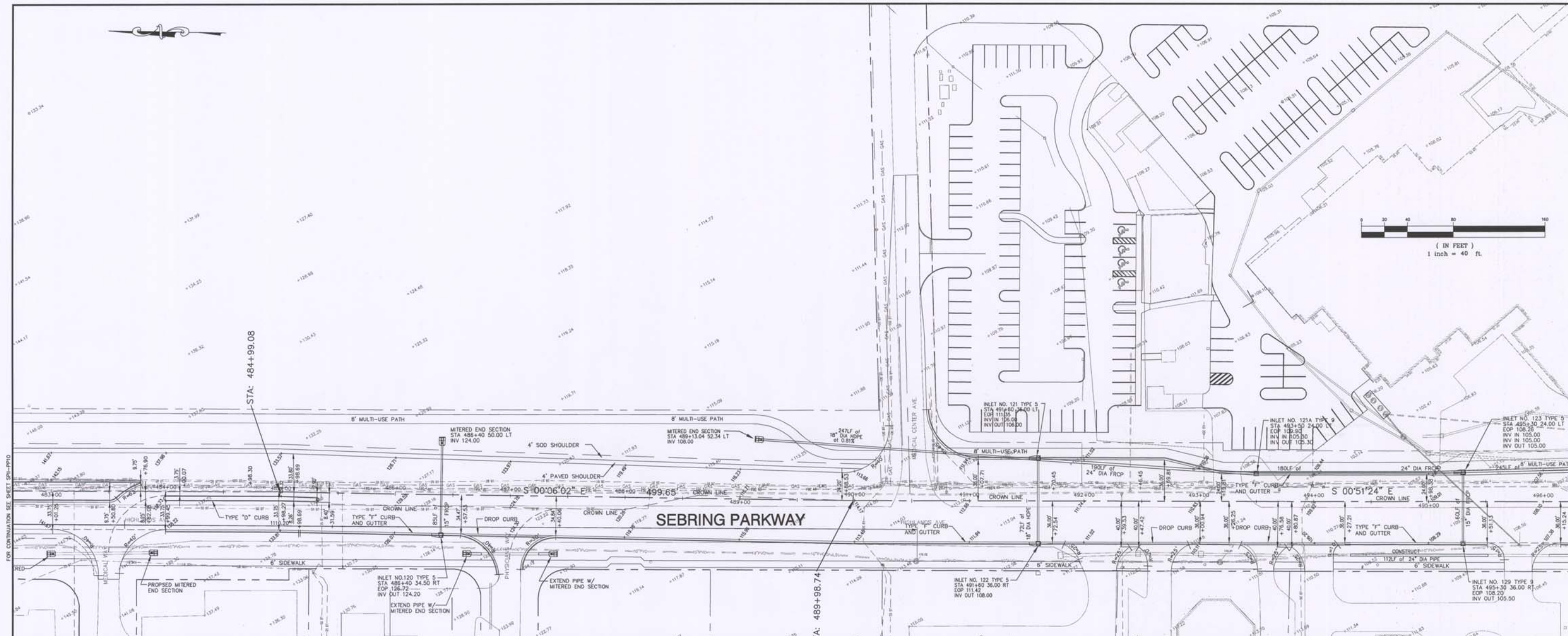
SCALE:  
HORIZ. 1"=40'  
VERT. 1"=8'

DRAWING NO.  
SPII-PP10

REV.  
0

APR 10 2008

SHEET 27 OF 74



DATE		BY		DESCRIPTION	
03-11-2008	TH			REMOVE PARKING LOT ENTRANCE	

DATE		BY		DESCRIPTION	

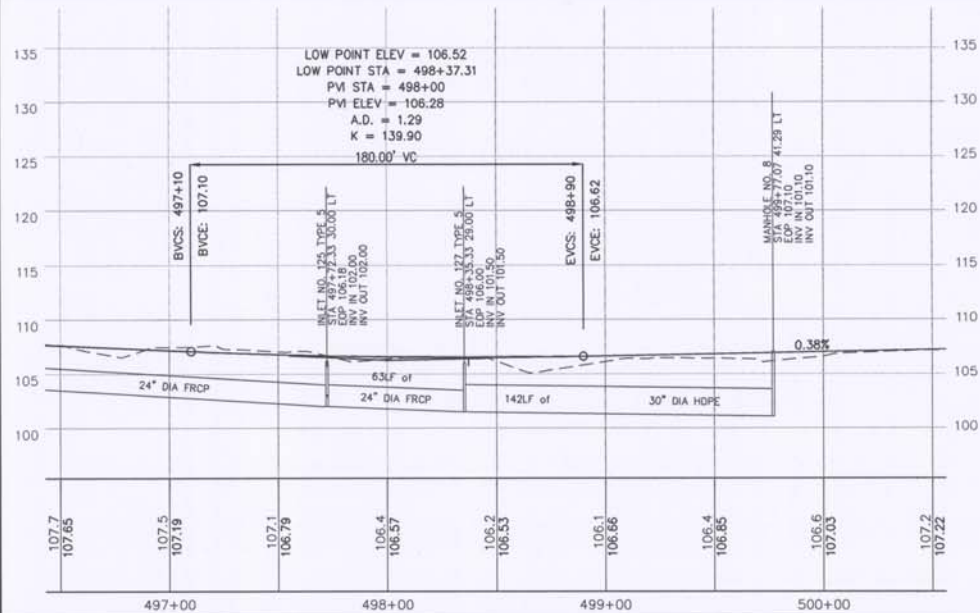
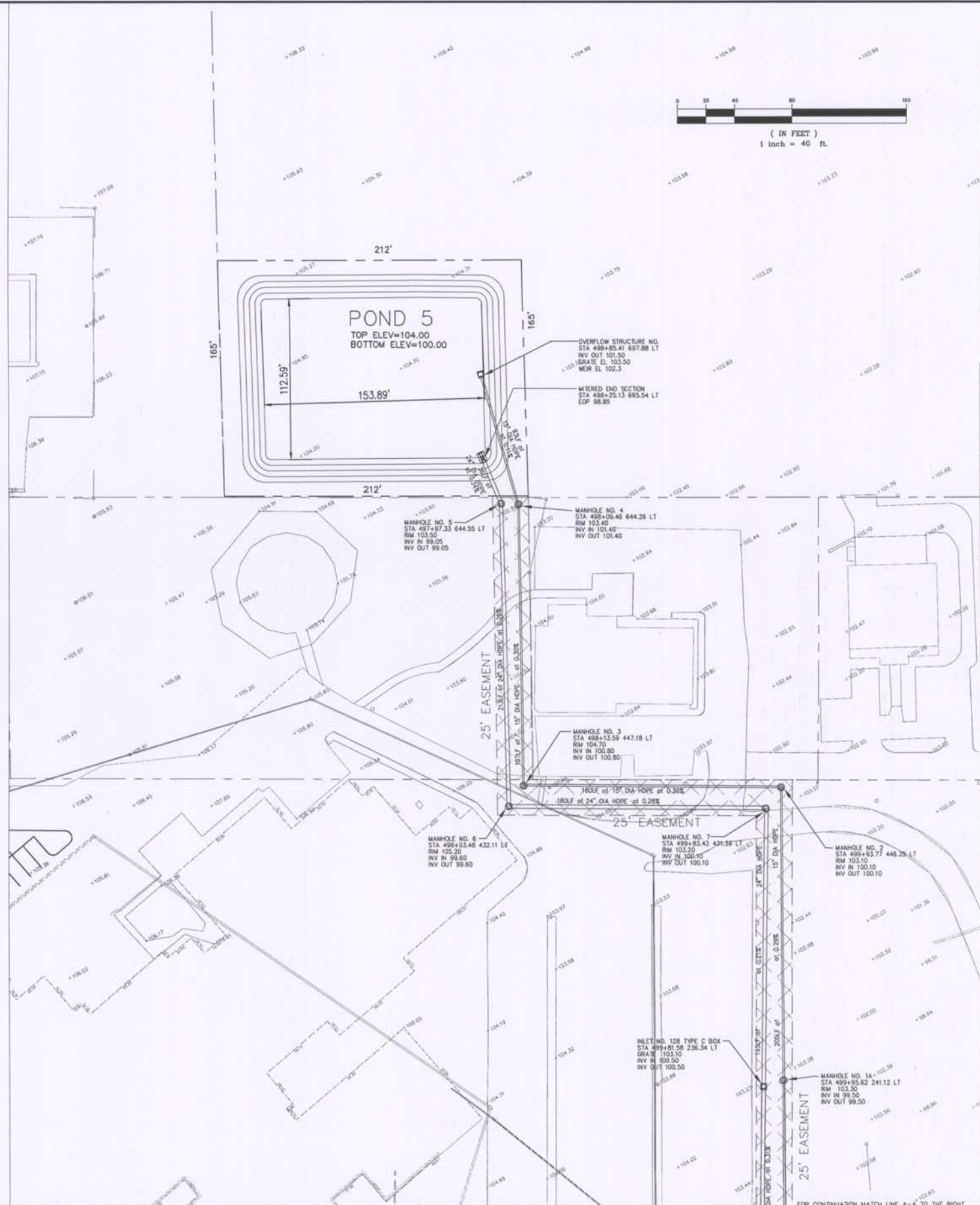
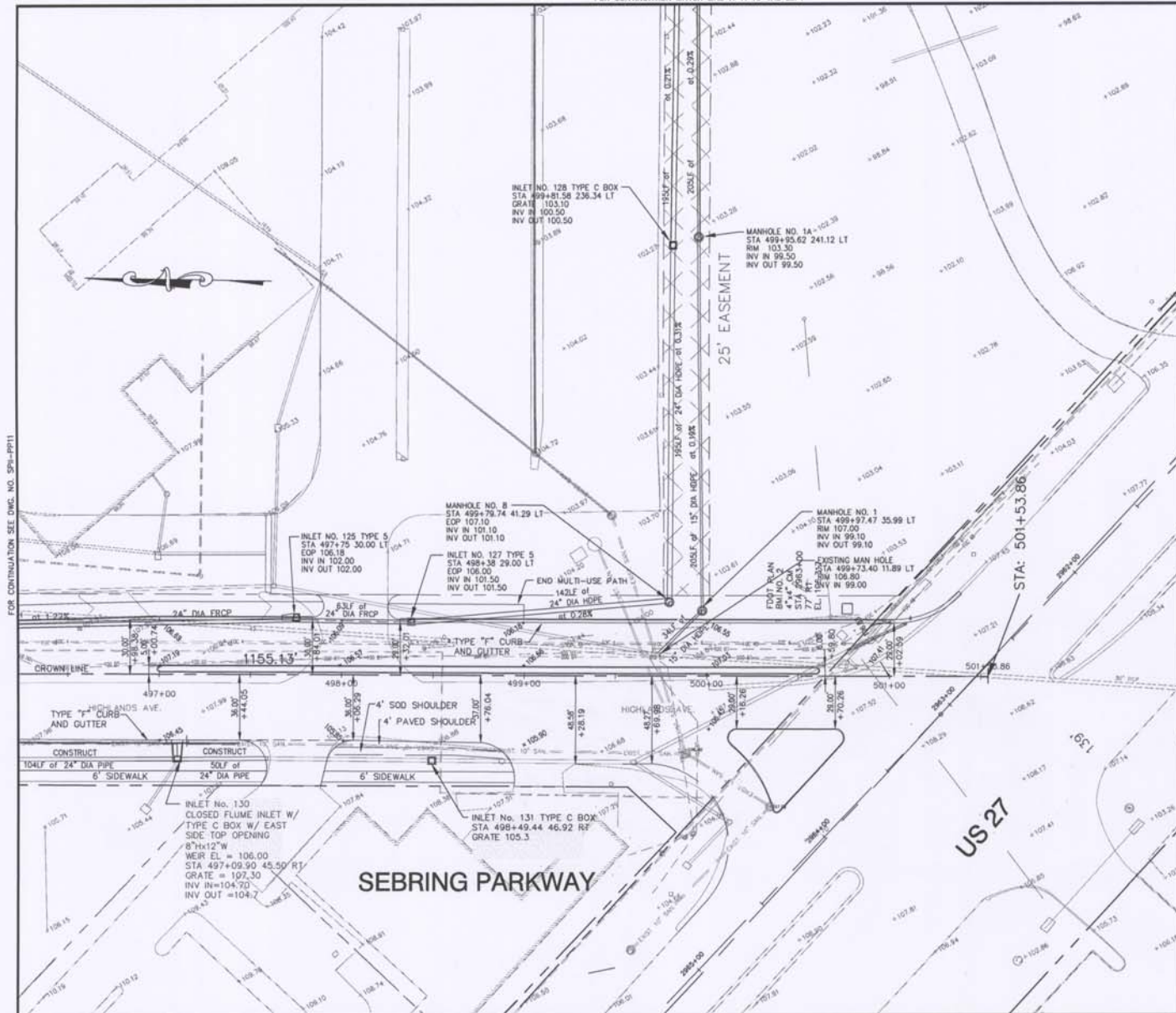
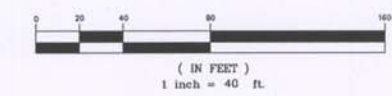
DESIGNED BY: RD/TH	<b>HIGHLANDS COUNTY</b> <b>ENGINEERING DEPARTMENT</b> 505 S. COMMERCE AVENUE SEBRING, FLORIDA 33870	
DRAWN BY: TH/RD/DN		
CHECKED BY: E. NORTELLUS, P.E.		
IN CHARGE: R. GAVARRETE, P.E.		
DATE: 03-11-2008		
APPROVED BY: RAMON GAVARRETE, P.E. FLORIDA REGISTRATION NO.: 51372	DATE: 4-4-2008	

<b>SEBRING PARKWAY - PHASE II</b> SEBRING PARKWAY PLAN AND PROFILE STA 483+00 TO STA 496+50		SCALE: HORIZ. 1"=40' VERT. 1"=8' DRAWING NO. SPM-PP11 REV. 0 APR 10 2008 SHEET 28 OF 74
--	--	--

3/10/2008 10:00 AM - Project: SPM-PP11 - 483+00 to 496+50 - 1/11/2008 10:00 AM

FOR CONTINUATION MATCH LINE A-A TO THE LEFT



DATE	BY	DESCRIPTION	DATE	BY	DESCRIPTION
03-11-2008	TH	CHANGE INLETS 130 AND 131. CHANGE PIPE SIZE FROM INLET 127 TO MANHOLE 5.			

DESIGNED BY: RD/TH  
 DRAWN BY: TH/RD/DN  
 CHECKED BY: E. NORTELUS, P.E.  
 IN CHARGE: R. GAVARRETE, P.E.  
 DATE: 03-11-2008

**HIGHLANDS COUNTY ENGINEERING DEPARTMENT**  
 505 S. COMMERCE AVENUE  
 SEBRING, FLORIDA 33870

APPROVED BY: RAMON GAVARRETE, P.E.  
 FLORIDA REGISTRATION NO.: 51372

DATE: 4-4-2008



**SEBRING PARKWAY - PHASE II**  
 SEBRING PARKWAY  
 PLAN AND PROFILE  
 STA 496+50 TO STA 500+00

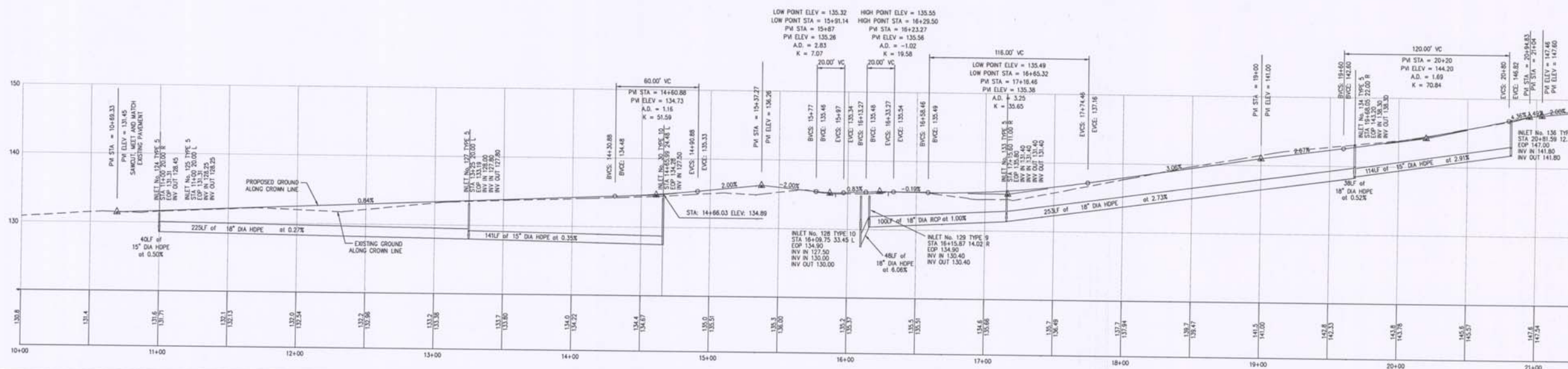
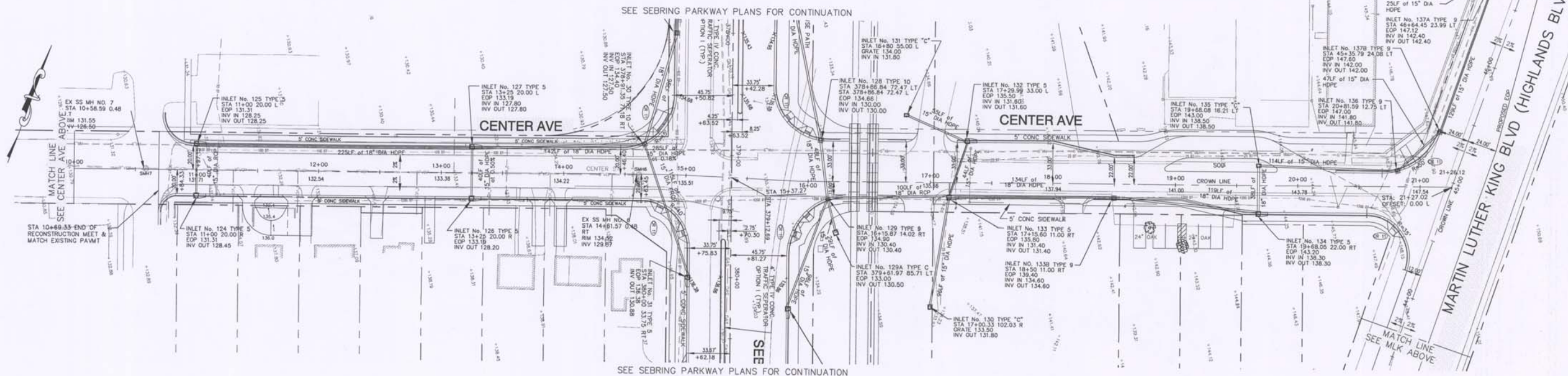
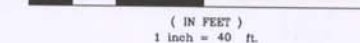
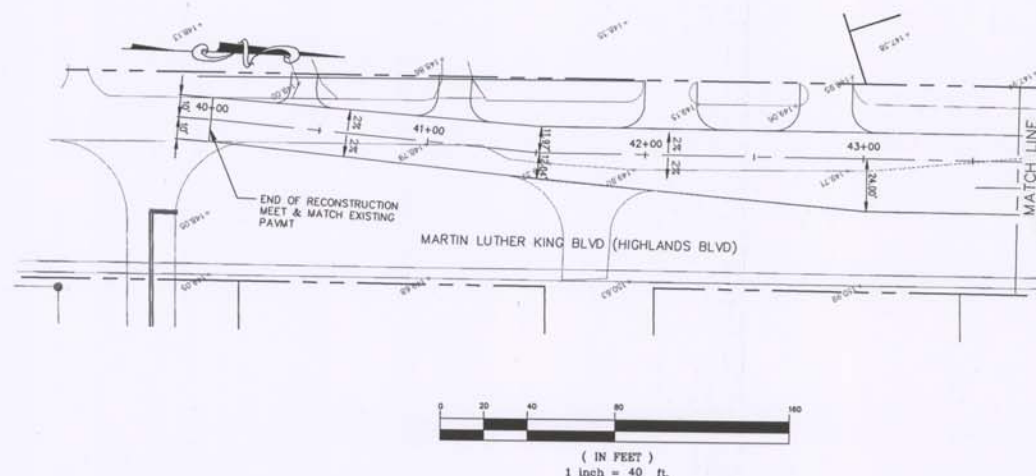
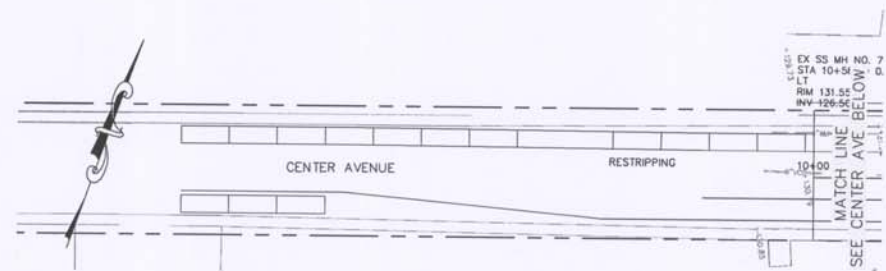
SCALE:  
 HORIZ. 1"=40'  
 VERT. 1"=8'

DRAWING NO. SP11-PP12  
 REV. 0

APR 10 2008  
 RECEIVED: [Signature]

SHEET 29 OF 74

EXISTING SANITARY SEWER MANHOLES				
MANHOLE #	RIM TOP (EXISTING)	RIM TOP (PROPOSED)	INVERT IN	INVERT OUT
SMH6	134.52		129.87	129.87
SMH7	131.55	131.55	126.50	126.18



DATE	BY	DESCRIPTION	DATE	BY	DESCRIPTION
11-14-2007	TH	ADD INLETS 137A AND 137B ON MLK BLVD.			
12-18-2007	TH	CHANGE INVERT ELEVATIONS ON INLETS 124, 125, 127, AND 30			

DESIGNED BY: RD/TH  
 DRAWN BY: TH/RD/DN  
 CHECKED BY: E. NORTELLUS, P.E.  
 IN CHARGE: R. GAVARRETE, P.E.  
 DATE: 03-11-2008

**HIGHLANDS COUNTY ENGINEERING DEPARTMENT**  
 505 S. COMMERCE AVENUE  
 SEBRING, FLORIDA 33870

APPROVED BY: RAMON GAVARRETE, P.E.  
 FLORIDA REGISTRATION NO.: 51372

DATE: 4-4-2008

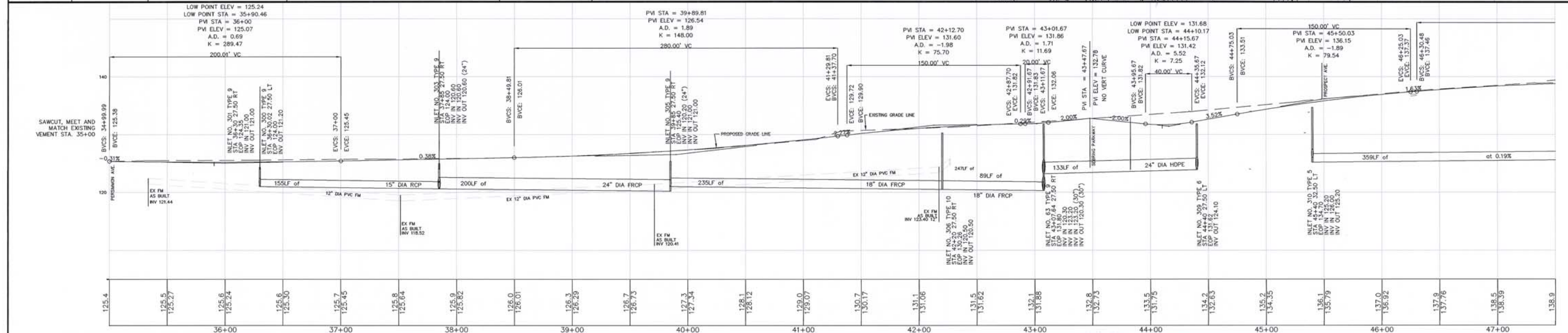
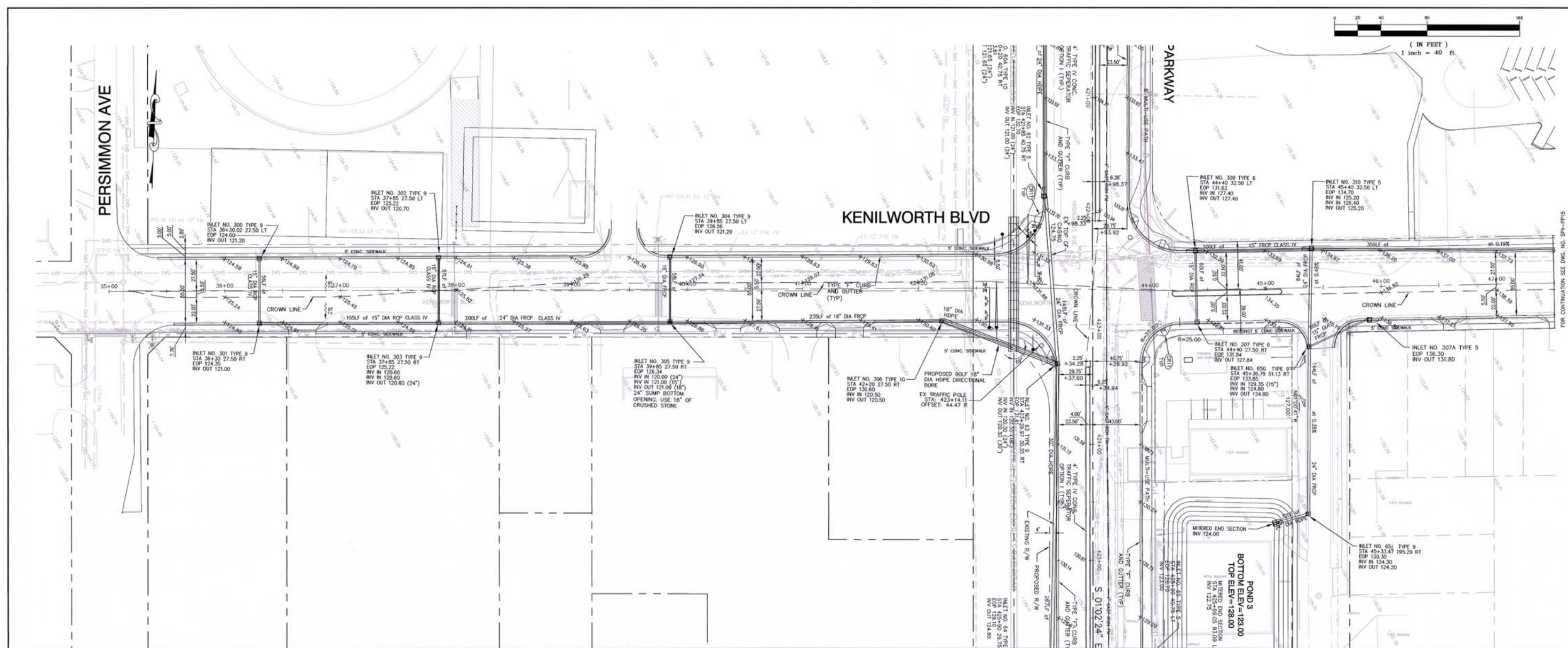
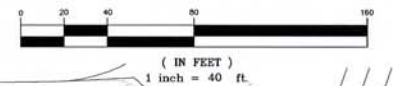


**SEBRING PARKWAY - PHASE II**  
 CENTER AVENUE  
 PLAN AND PROFILE  
 STA 10+00 TO STA 21+33

SCALE:  
 HORIZ. 1"=40'  
 VERT. 1"=8'

DRAWING NO. SPII-PP13  
 REV. 0

APR 10 2008  
 RECEIVED  
 SHEET 30 OF 74



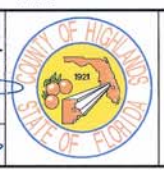
DATE	BY	DESCRIPTION	DATE	BY	DESCRIPTION
03-11-2008	TH	CHANGE INLETS 301, 302, 303, 304, 305 AND 306			
03-27-2008	TH	CHANGE BASELINE FROM CROWN LINE TO CENTER LINE.			
06-04-2008	TH	CHANGE CHANGE INLETS 63, 307, 64H, 309, 310, 65G, AND 65J. ADD OUTFALL STRUCTURE.			
06-05-2008	TH	SHFIMD COMMENTS			

DESIGNED BY: RD/TH  
 DRAWN BY: TH/RB/DN  
 CHECKED BY: E. NORTELUS, P.E.  
 IN CHARGE: R. GAVARRETE, P.E.  
 DATE: 03-11-2008

**HIGHLANDS COUNTY ENGINEERING DEPARTMENT**  
 505 S. COMMERCE AVENUE  
 SEBRING, FLORIDA 33870

APPROVED BY: RAMON GAVARRETE, P.E.  
 FLORIDA REGISTRATION NO.: 51372

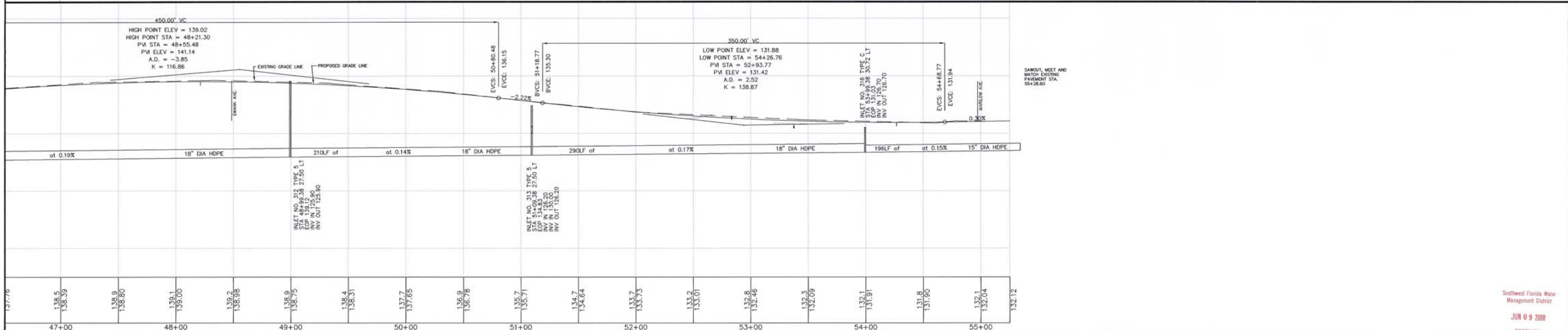
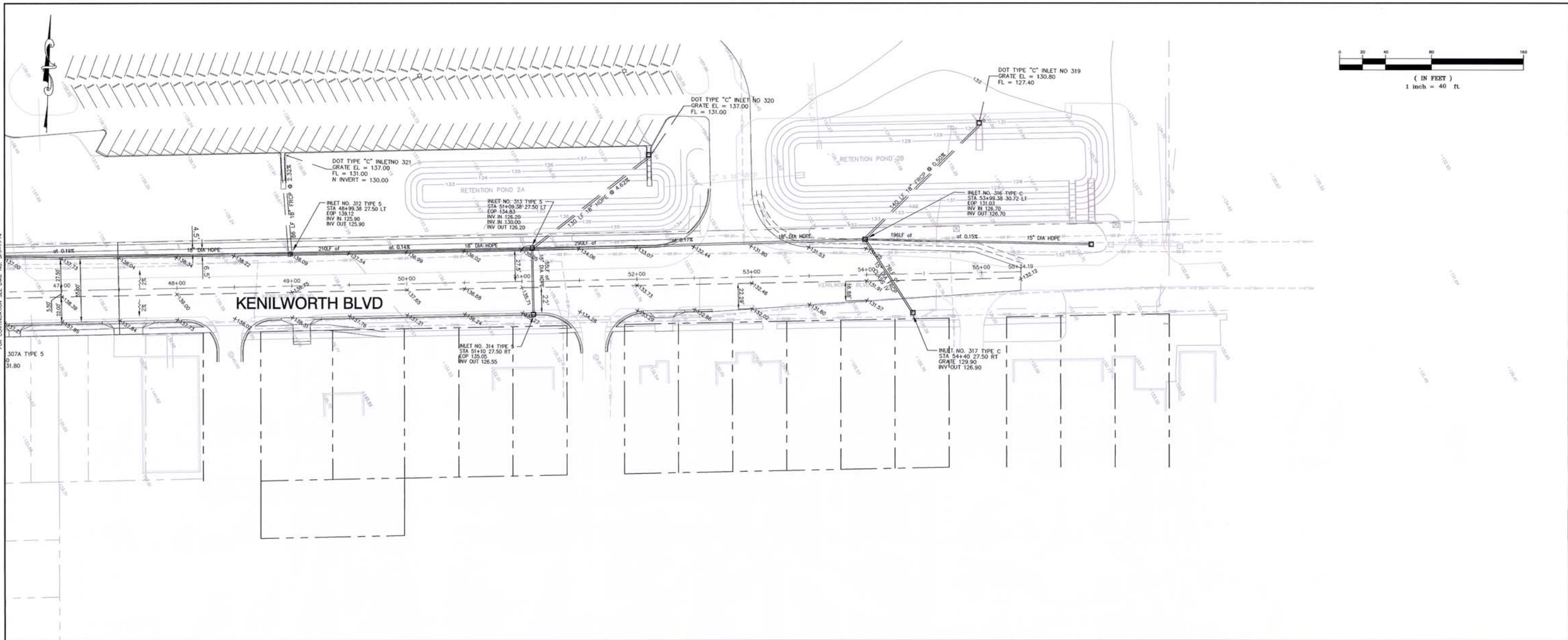
DATE: 6-5-2008



**SEBRING PARKWAY - PHASE II**  
 KENILWORTH BLVD  
 PLAN AND PROFILE  
 STA 35+00 TO STA 47+00

SCALE: HORIZ. 1"=40'  
 VERT. 1"=8'

DRAWING NO. SP14  
 SHEET 31 OF 74



DATE	BY	DESCRIPTION
03-11-2008	TH	CHANGE INLETS 312, 313, 316 AND 317. ADD INLETS 319, 320 AND 321.
03-27-2008	TH	CHANGE BASELINE FROM CROWN LINE TO CENTER LINE.
06-05-2008	TH	SMWMD COMMENTS

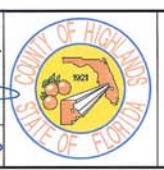
DATE	BY	DESCRIPTION

DESIGNED BY: RD/TH  
 DRAWN BY: TH/RD/DN  
 CHECKED BY: E. NORTELUS, P.E.  
 IN CHARGE: R. GAVARRETE, P.E.  
 DATE: 03-11-2008

**HIGHLANDS COUNTY  
 ENGINEERING DEPARTMENT**  
 505 S. COMMERCE AVENUE  
 SEBRING, FLORIDA 33870

APPROVED BY: RAMON GAVARRETE, P.E.  
 FLORIDA REGISTRATION NO.: 51372

DATE: 6-5-2008



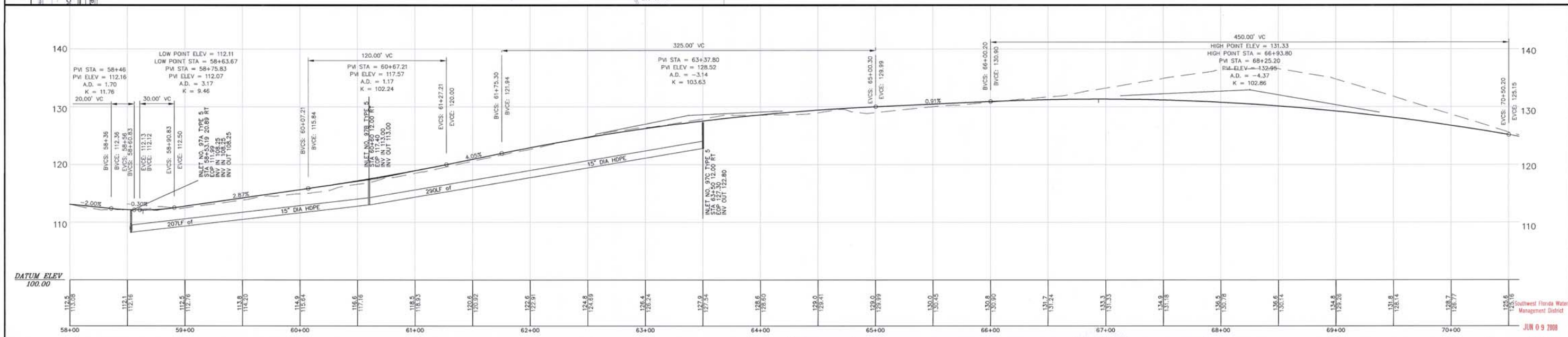
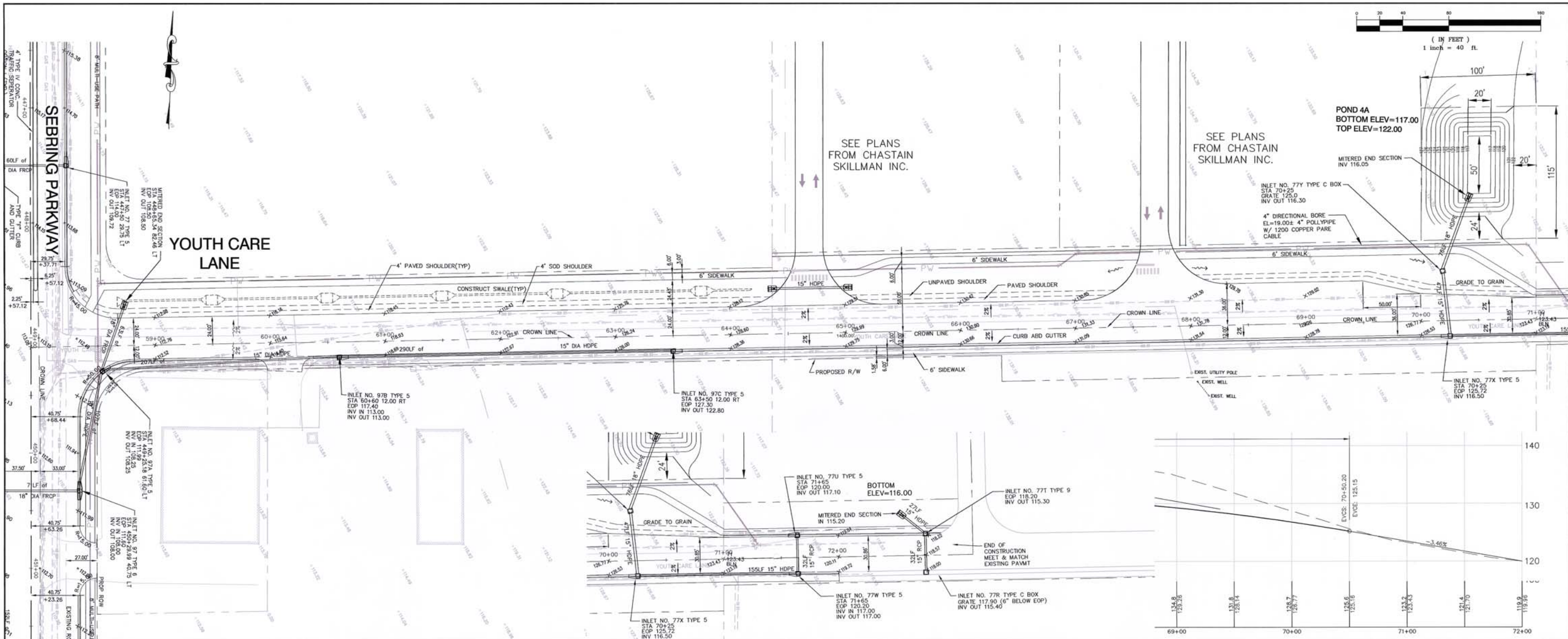
Southwest Florida Water Management District  
 JUN 09 2008

RECEIVED

**SEBRING PARKWAY - PHASE II**  
 KENILWORTH BLVD  
 PLAN AND PROFILE  
 STA 47+00 TO STA 55+28.60

SCALE: HORIZ. 1"=40'	REV. 0
VERT. 1"=8'	
DRAWING NO. SPII-PP15	SHEET 32 OF 74





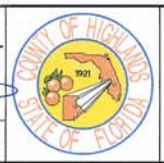
DATE	BY	DESCRIPTION	DATE	BY	DESCRIPTION
03-11-2008	TH	ADD INLETS 97B AND 97C			
06-05-2008	TH	5WFMD COMMENTS			

DESIGNED BY:	RD/TH
DRAWN BY:	TH/RD/DN
CHECKED BY:	E. NORTHEUS, P.E.
IN CHARGE:	R. GAVARRETE, P.E.
DATE:	03-11-2008

**HIGHLANDS COUNTY**  
**ENGINEERING DEPARTMENT**  
 505 S. COMMERCE AVENUE  
 SEBRING, FLORIDA 33870

APPROVED BY: RAMON GAVARRETE, P.E.  
 FLORIDA REGISTRATION NO.: 51372

DATE: 6-5-2008



**SEBRING PARKWAY - PHASE II**  
**YOUTH CARE LANE**  
**PLAN AND PROFILE**  
 STA 58+00 TO STA 72+00

SCALE:	HORIZ. 1"=40'	VERT. 1"=8'
DRAWING NO.	SP11-PP16	REV. 0
SHEET 33 OF 74		

DATUM ELEV 100.00

JUN 09 2008  
 Southwest Florida Water Management District

