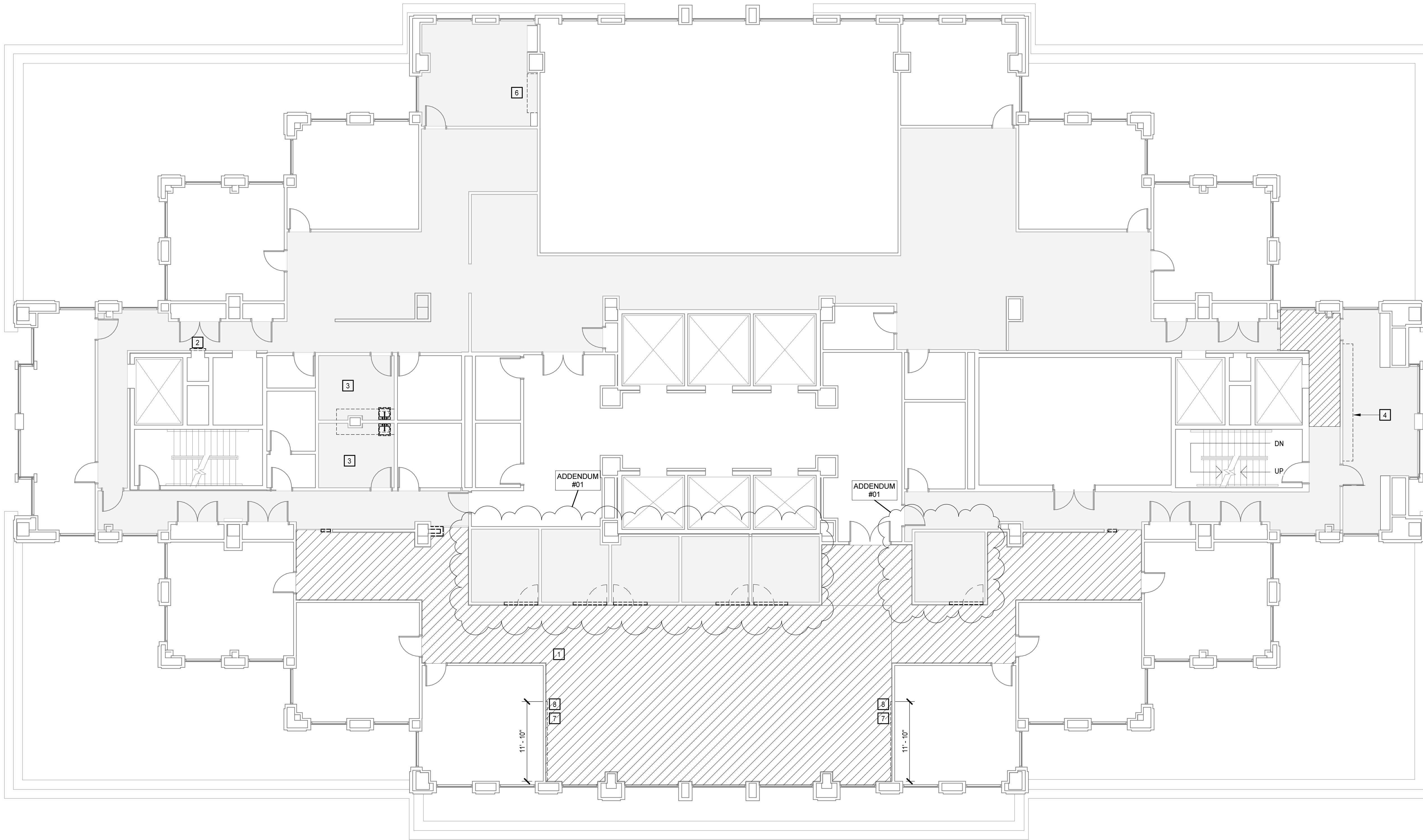


■ LEVEL 1 ALTERATIONS
 ■ LEVEL 2 ALTERATIONS

N
 LEVEL OF ALTERATIONS
 1/16" = 1'-0"



N
 TWELFTH FLOOR DEMOLITION PLAN
 1/8" = 1'-0"

DEMOLITION PLAN KEYNOTES

REPRESENTED BY []
 APPLIES TO DRAWING A1.2.1

- 1 REMOVE WALLCOVERING
- 2 REMOVE DUMBWAITER ACCESS PANEL AND HARDWARE
- 3 REMOVE CASEWORK
- 4 SALVAGE BOOKCASE, RETURN TO COUNTY
- 6 SALVAGE CASEWORK, RETURN TO COUNTY
- 7 REMOVE CHAIR RAIL AND WALL COVERING BELOW CHAIR RAIL
- 8 REMOVE PICTURE RAIL

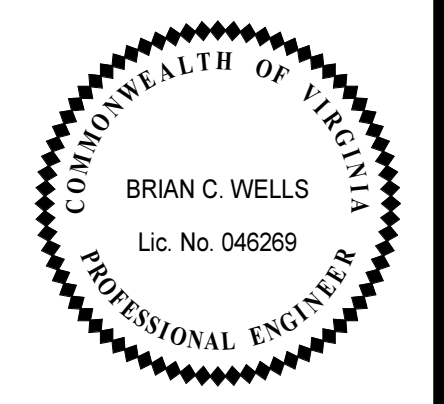
DEMOLITION PLAN LEGEND

APPLIES TO DRAWINGS A1.2.1 - A1.2.n

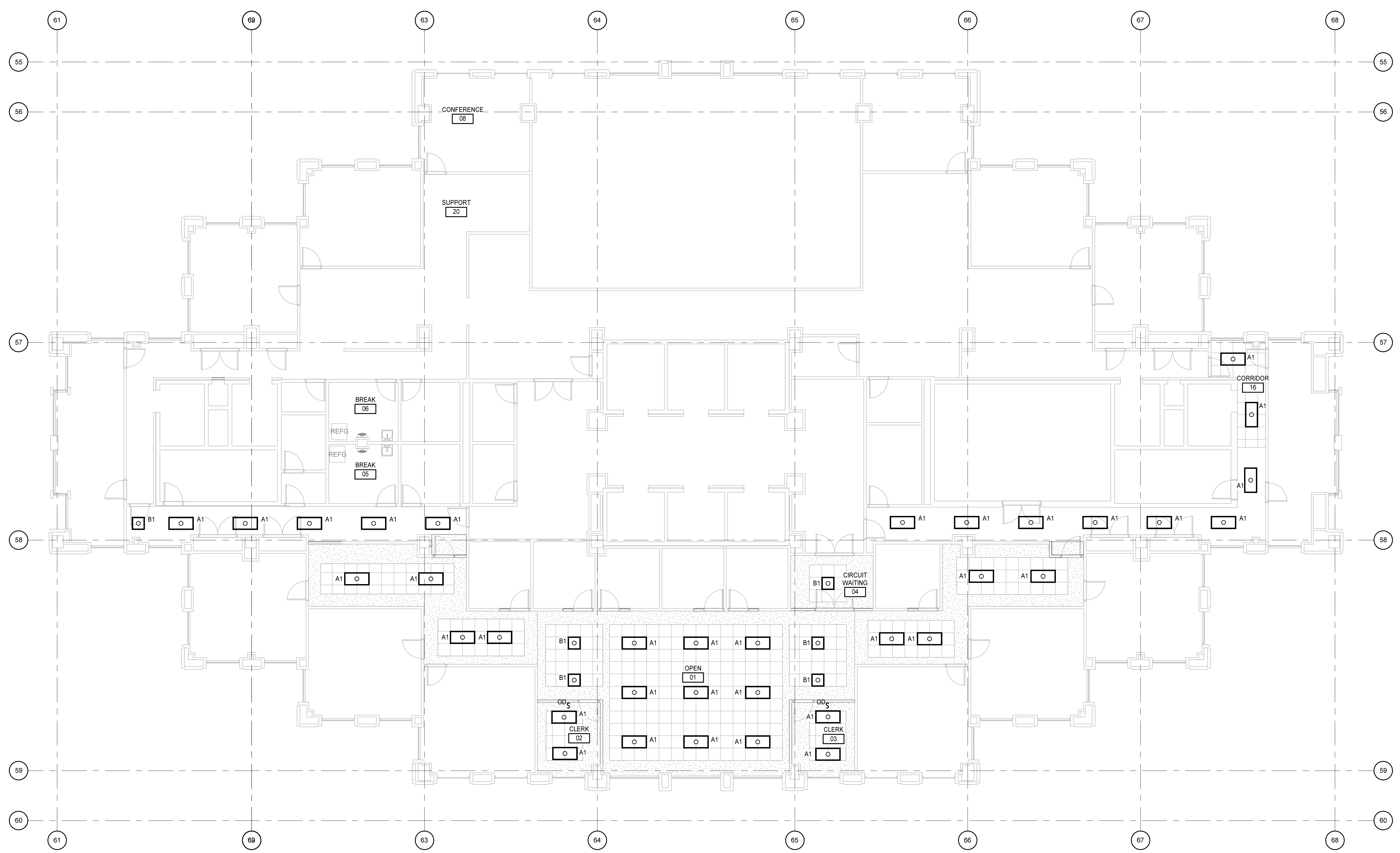
- EXISTING PARTITION/ WALL/ ITEM TO REMAIN
- REMOVE EXISTING PARTITION/WALL/ITEM
- REMOVE EXISTING DOOR AND FRAME ASSEMBLY INCLUDING DOOR HARDWARE, ANCHORS, AND THRESHOLD (WHERE OCCURS).
- REMOVE EXISTING PLUMBING FIXTURE. REFER TO PLUMBING DEMOLITION PLAN FOR ADDITIONAL INFORMATION.
- REMOVE ALL EXISTING FINISH FLOORING AND BASE IN AREA
- REMOVE ALL EXISTING FINISH FLOORING, BASE, AND SUSPENDED CEILINGS IN AREA



PROJECT NO:	563007
DATE:	October 28, 2022
REVISIONS	
DATE	DESCRIPTION
1/05/23	ADDENDUM #01



GENERAL NOTES
 APPLIES TO DRAWING E1.1
 REPRESENTED BY []
 1. CONNECT LIGHTING FIXTURE TO EXISTING CIRCUITRY AND SWITCHING SYSTEM THAT WAS MAINTAINED DURING DEMOLITION. APPLY THIS TO ALL THE LIGHTING FIXTURES.



INTERIOR LIGHT FIXTURE SCHEDULE											
TYPE	DESCRIPTION	FIXTURE MANUFACTURER	SERIES NO.	WATTAGE	LUMENS	LAMP COLOR TEMP.	MOUNTING	OPTIONS		REFERENCE NOTE	COMMENTS
								DIMMING	BATTERY PACK **		
A1	2x4 TROFFER	METALUX	24C22-55HE-UNV-L835	41	5571 lm	3500 K	RECESSED	X			
B1	2x2 TROFFER	METALUX	22C22-50HE-UNV-L835	37	5095 lm	3500 K	RECESSED	X			

ADDENDUM #01

12TH FLOOR PLAN - ELECTRICAL - LIGHTING
 1/8" = 1'-0"

ARLINGTON COUNTY COURTHOUSE 12TH FLOOR RENOVATION

563007
 ARLINGTON COUNTY, VIRGINIA
 1425 COURTHOUSE RD., ARLINGTON, VA 22201

PROJECT NO:	563007
DATE:	October 28, 2022
REVISIONS	
DATE	DESCRIPTION
07/05/23	ADDENDUM #01

12TH FLOOR PLAN - ELECTRICAL - LIGHTING

J
I
H
G
F
E
D
C
B
A

1 2 3 4 5 6 7 8 9 10

ABBREVIATIONS	
@	AT ABOVE
ABV	ABOVE FINISHED FLOOR
AFB	AIR HANDLING UNIT
AFG	AIR HANDLING UNIT
AHU	AIR HANDLING UNIT
BLDG	BUILDING
CL	CENTERLINE
CLG	CEILING
COL	COLUMN
CONC	CONCRETE
CONT	CONTINUATION
CORR	CORRIDOR
CR	CLASSROOM
CU	CUBIC
CU FT	CUBIC FEET
DCW	DOMESTIC COLD WATER
DEG	DEGREE(S)
DEMO	DEMOLISH OR DEMOLITION
DIA	DIAMETER
DIP	DUCTILE IRON PIPE
DN	DOWN
DP	DRY PIPE
DS	DOWNSPOUT
DTL	DETAIL
DWG	DRAWING
E	EAST
EGH	ELECTRIC CEILING HEATER
EF	EXHAUST FAN
EH-1	EXTRA HAZARD GROUP 1
EH-2	EXTRA HAZARD GROUP 2
ELEC	ELECTRICAL
EQ	EQUAL
EQUIP	EQUIPMENT
ET	EXPANSION TANK
ETR	EXISTING TO REMAIN
EWI	ELECTRIC WATER HEATER
EX	EXISTING
EXP	EXPANSION
F	FARENHEIT
FD	FIRE DAMPER
FDC	FIRE DEPARTMENT CONNECTION
FG	FINISHED GRADE
FH	FIRE HYDRANT
FHC	FIRE HOSE CABINET
FHS	FIRE HOSE STATION
FHVC	FIRE HOSE VALVE CABINET
FLR	FLOOR
FP	FIRE PROTECTION
FT	FOOT OR FEET
FVC	FIRE VALVE CABINET
GAL	GALLONS
GPM	GALLONS PER MINUTE
GUH	GAS-FIRED UNIT HEATER
HB	HOSE BIB
HD	HEAD
HORIZ	HORIZONTAL
HP	HORSEPOWER
HW	HOT WATER
ID	INSIDE DIAMETER
IN	INCH
INSUL	INSULATE OR INSULATION
JAN	JANITOR
KIT	KITCHEN
KW	KILOWATT(S)
LAB	LABORATORY
LAV	LAVATORY
LBS	POUNDS
LF	LINEAR FOOT (FEET)
LH	LIGHT HAZARD
MATL	MATERIAL
MAX	MAXIMUM
MECH	MECHANICAL
MFR	MANUFACTURER
MH	MANHOLE
MIN	MINIMUM
MISC	MISCELLANEOUS
MTD	MOUNTED
N	NORTH
NA	NOT APPLICABLE/AVAILABLE
NC	NORMALLY CLOSED
NIC	NOT IN CONTRACT
NO	NORMALLY OPEN
NO. OR #	NUMBER
OC	ON CENTER
OD	OUTSIDE DIAMETER
OFCI	OWNER FURNISHED CONTRACTOR INSTALLED
OFF	OFFICE
OH-1	ORDINARY HAZARD GROUP 1
OH-2	ORDINARY HAZARD GROUP 2
P	PUMP
PC	PRECAST
PV	POST INDICATOR VALVE
POLY	POLYETHYLENE
PREFAB	PREFABRICATE(D)
PROJ	PROJECT
PSF	POUNDS PER SQUARE FOOT
PSI	POUNDS PER SQUARE INCH
PSIG	POUNDS PER SQUARE INCH GAUGE
PVC	POLYVINYL CHLORIDE
R	RISER
REF	REFERENCE
REQ	REQUIRED
RM	ROOM
RPM	REVOLUTIONS PER MINUTE
RTU	ROOF TOP UNIT
S	SOUTH
SAN	SANITARY
SCH	SCHEDULE
SD	SMOKE DAMPER
SHT	SHEET
SM	SIMILAR
SP	STATIC PRESSURE
SPEC	SPECIFICATION
SPR	SPRINKLER
SQ	SQUARE
STD	STANDARD
STL	STEEL
STOR	STORAGE
SW	SWITCH
T	TEMPERATURE
THK	THICKNESS
TLT	TILE
TOSL	TOP OF SLAB
TYP	TYPICAL
UG	UNDERGROUND
UH	UNIT HEATER
UI	UNLESS UNDCATED
UNO	UNLESS NOTED (INDICATED) OTHERWISE
V	VOLTS
VERT	VERTICAL
W	WEST
W	WITH
W/O	WITHOUT
WH	WATER HEATER

GRAPHICS SYMBOLS LEGEND	
	VALVE
	GATE VALVE
	VALVE IN RISER
	CHECK VALVE
	SOLENOID VALVE
	FLOW SWITCH
	PRESSURE REDUCING VALVE
	DOUBLE CHECK BACKFLOW PREVENTER
	FIRE PROTECTION WET SPRINKLER PIPING
	FIRE PROTECTION DRY SPRINKLER PIPING
	FIRE EXTINGUISHING GAS PIPING
	FIRE PROTECTION DRY SPRINKLER PIPING
	UNION
	PRESSURE GAUGE WITH GAUGE COCK
	PIPE TURNED DOWN
	PIPE TURNED UP
	PIPE TEE UP
	PIPE TEE DOWN
	PIPE CAP
	PITCH PIPE DOWN IN DIRECTION OF ARROW AT INDICATED SLOPE
	FLOW IN DIRECTION OF ARROW
	CONCENTRIC PIPE REDUCTION
	ECCENTRIC PIPE REDUCTION
	PUMP
	FIRE DEPARTMENT CONNECTION
	PENDANT SPRINKLER HEAD
	CONCEALED PENDANT SPRINKLER HEAD
	EXTENDED COVERAGE PENDANT SPRINKLER HEAD
	CONCEALED EXTENDED COVERAGE PENDANT SPRINKLER HEAD
	PENDANT SPRINKLER HEAD WITH GUARD
	UPRIGHT SPRINKLER HEAD
	EXTENDED COVERAGE UPRIGHT SPRINKLER HEAD
	UPRIGHT SPRINKLER HEAD WITH GUARD
	SIDEWALL SPRINKLER HEAD
	EXTENDED COVERAGE SPRINKLER HEAD
	CONCEALED EXTENDED COVERAGE SIDEWALL SPRINKLER HEAD
	EXTINGUISHING AGENT DISCHARGE NOZZLE
	COMBINATION AUDIBLE AND STROBE ALARM
	MANUAL PULL STATION
	ABORT SWITCH
	IONIZATION SMOKE DETECTOR
	PHOTOELECTRIC SMOKE DETECTOR
	POINT OF CONNECTION TO EXISTING
	LIMIT OF DEMOLITION
	KEYNOTE
	SPACE IDENTIFICATION TAG
	SPACE NUMBER
	BUILDING AREA (WHEN USED)
	EQUIPMENT IDENTIFICATION TAG
	EQUIPMENT NUMBER
	UNIT DESIGNATION
	STRUCTURAL GRID LINE WITH DESIGNATION
	SECTION WHERE CUT
	SECTION LETTER
	DRAWING WHERE SECTION IS INDICATED
	ENLARGED PLAN WHERE CUT
	ENLARGED PLAN NUMBER
	DRAWING WHERE ENLARGED PLAN IS INDICATED
	DETAIL TAG
	DETAIL NUMBER
	DRAWING WHERE DETAIL IS INDICATED
	DETAIL TITLE
	DETAIL NUMBER
	DRAWING WHERE DETAIL IS INDICATED
	DRAWING WHERE DETAIL IS CUT
	ADDITIONAL DRAWING REFERENCES
	SECTION TITLE
	SECTION LETTER
	DRAWING WHERE SECTION IS INDICATED
	DRAWING WHERE SECTION IS CUT
	ADDITIONAL DRAWING REFERENCES

GENERAL NOTES	
1	THE CONTRACT DOCUMENTS ARE COMPLEMENTARY AND WHAT IS REQUIRED BY ONE SHALL BE AS BINDING AS IF REQUIRED BY ALL. IN THE CASE OF A CONFLICT, DISAGREEMENT, OR AMBIGUITY, PROVIDE THE BETTER QUALITY. IN THE CASE OF A CONFLICT, DISAGREEMENT, OR AMBIGUITY, PROVIDE THE GREATER QUANTITY OF WORK.
2	COORDINATE THE LOCATION OF ALL SPRINKLER PIPING WITH THE WORK OF OTHER TRADES. SPRINKLER PIPING SHALL NOT BE INSTALLED WHERE ITS LOCATION INHIBITS ACCESS TO EQUIPMENT ABOVE THE CEILING, FILTER ACCESS OR INFRINGES UPON CLEARANCES DICTATED BY THE NATIONAL ELECTRIC CODE.
3	VERIFY DIMENSIONS AND ROUTING IN FIELD BEFORE FABRICATION OF PIPING AND FIXTURES.
4	REFER TO THE LIFE SAFETY PLAN FOR LOCATIONS OF FIRE AND SMOKE SEPARATION ASSEMBLIES.
5	REFER TO STRUCTURAL DRAWINGS FOR DETAILS AND MAXIMUM SPACING REQUIREMENTS REGARDING HANGER ATTACHMENTS TO STEEL BAR JOISTS.

SPRINKLER HEADS	
1	IN SUSPENDED ACOUSTICAL OR GYPSUM CEILINGS: PROVIDE CONCEALED, QUICK RESPONSE TYPE SPRINKLERS WITH MATCHING TO EXISTING COVER PLATE.

MOSELEY ARCHITECTS

5200 NORFOLK STREET, RICHMOND, VA 23230
PHONE (804) 784-7557 FAX (804) 355-5690
MOSELEYARCHITECTS.COM

ARLINGTON COUNTY COURTHOUSE 12TH FLOOR RENOVATION

563007
ARLINGTON COUNTY, VIRGINIA
1425 N COURTHOUSE RD, ARLINGTON, VA 22201

REVISIONS	
DATE	DESCRIPTION

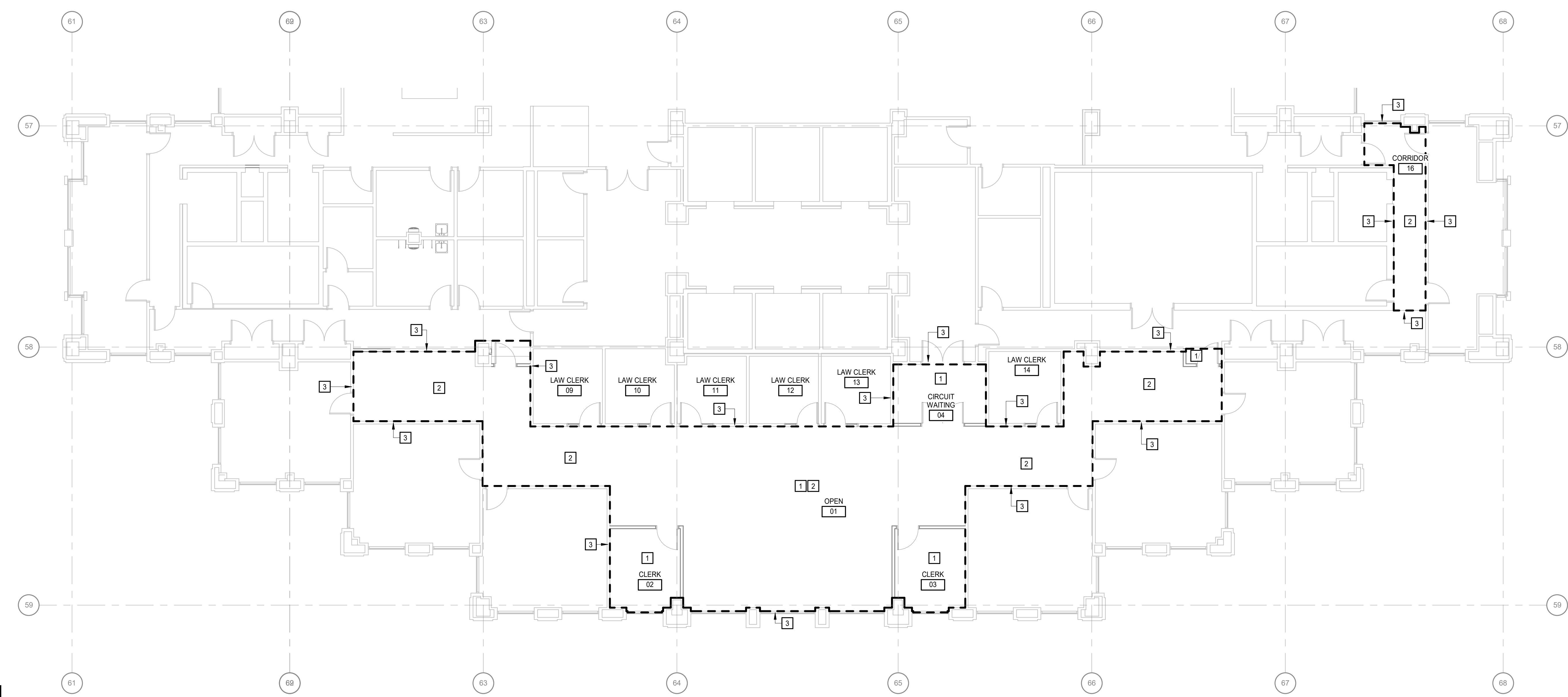
LEGENDS, ABBREVIATIONS AND GENERAL NOTES

FP0.1



FIRE PROTECTION KEYNOTES
 APPLIES TO DRAWINGS FP2.1
 REPRESENTED BY []

1. ADD/RELOCATE NEW FIRE SPRINKLERS PER NFPA 13 AND LOCAL AUTHORITY HAVING JURISDICTION STANDARDS TO ACCOMMODATE THE RENOVATION OF THIS SPACE.
2. PROVIDE NEW FIRE SPRINKLERS IN SAME LOCATION TO ACCOMMODATE REMOVAL AND REPLACEMENT OF CEILINGS WITHIN THIS SPACE.
3. OUTLINED AREA OF RENOVATION.



NEW 12TH FLOOR PLAN - FIRE PROTECTION
 1/8" = 1'-0"

ARLINGTON COUNTY COURTHOUSE 12TH FLOOR RENOVATION

563007
 ARLINGTON COUNTY, VIRGINIA
 1425 N COURTHOUSE RD, ARLINGTON, VA 22201

PROJECT NO: 563007	
DATE: October 28, 2022	
REVISIONS	
DATE	DESCRIPTION

NEW 12TH FLOOR PLAN
 - FIRE PROTECTION