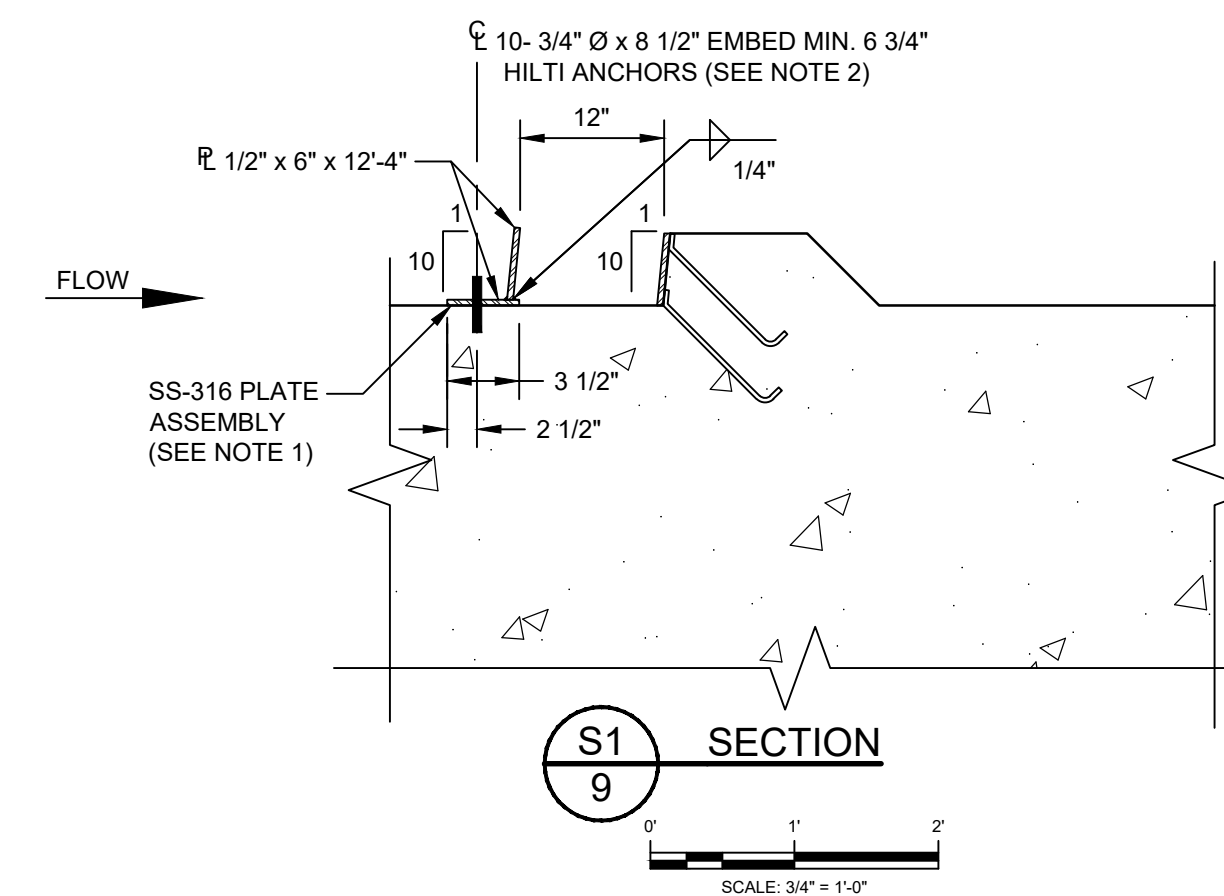
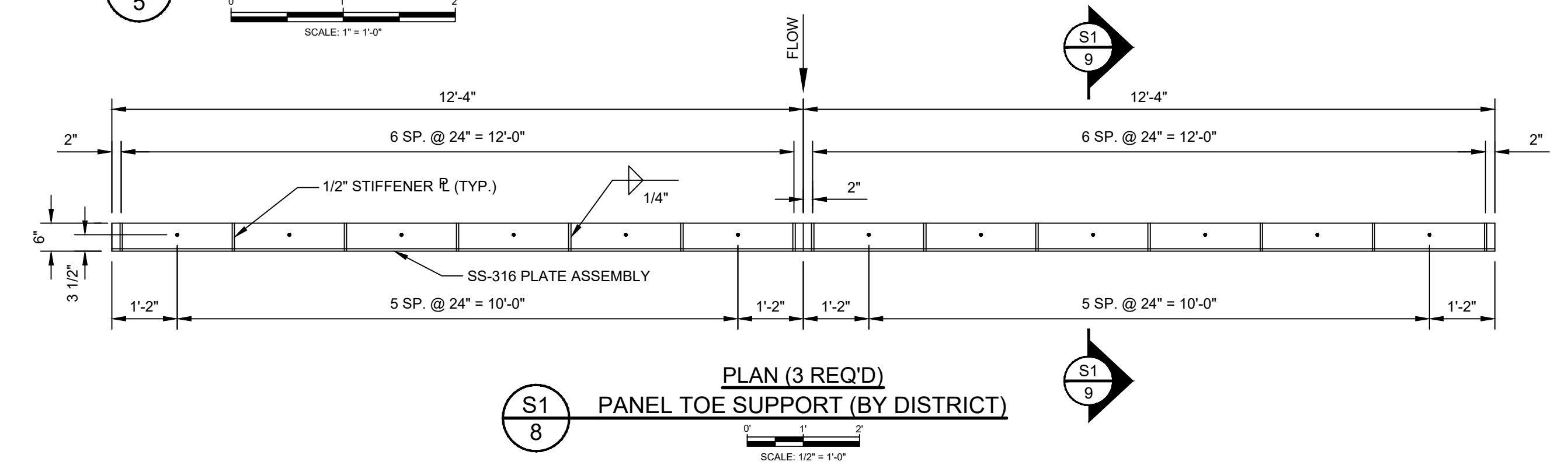
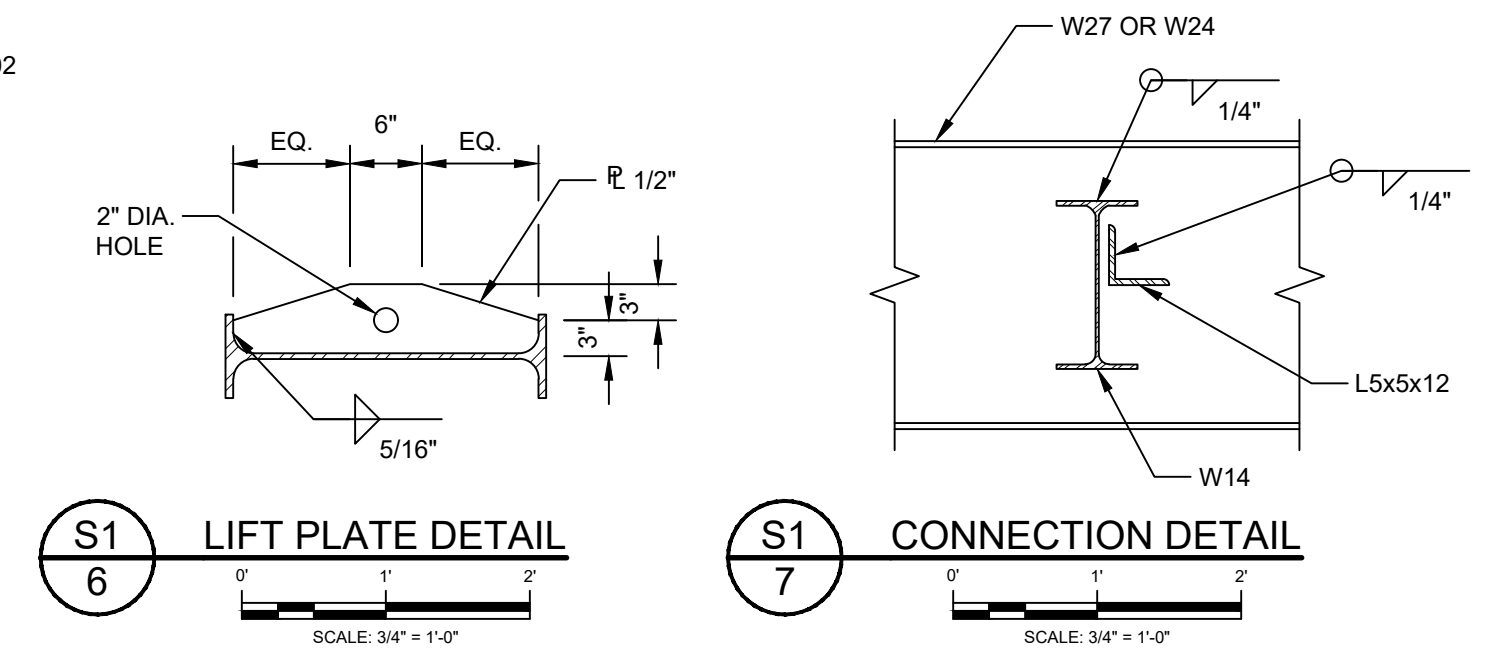


- NOTES:
1. THE PANEL TOE SUPPORT PLATE ASSEMBLY SHALL BE STAINLESS STEEL TYPE 316 CONFORMING TO ASTM A479.
  2. ANCHORS SHALL UTILIZE THE HILTI HIT-RE 500-V3 EPOXY ADHESIVE ANCHORING SYSTEM, OR EQUAL. THREADED ANCHOR RODS, SHALL BE 3/4" DIA. X 8-1/2" LONG HAS-R 316 STAINLESS STEEL WITH A MINIMUM EMBEDMENT DEPTH OF 6-3/4". NUTS AND WASHERS SHALL ALSO BE SS-316.
  3. PROTECTIVE COATING FOR STRUCTURAL STEEL SHALL BE AS MANUFACTURED BY SHERWIN-WILLIAMS, OR EQUAL, AS FOLLOWS:  
 FIRST COAT (PRIMER): DURA-PLATE 235, 4-8 MILS DFT  
 SECOND COAT: DURA-PLATE 235, 4-8 MILS DFT  
 THIRD (FINAL) COAT: DURA-PLATE 235, 4-8 MILS DFT  
 COLOR: LIGHT GRAY  
 SURFACE PREPARATION AND APPLICATION SHALL BE IN ACCORDANCE WITH THE PAINT MANUFACTURER SPECIFICATIONS.



**ISSUED FOR CONSTRUCTION**

NO.	REVISION	BY	DATE	APPROVED	DATE
1	ISSUED FOR CONSTRUCTION	N.J.G.	12/17/20	W.R.C.	12/17/20

UPPER ST. JOHNS RIVER BASIN  
 STRUCTURE 157  
 INDIAN RIVER COUNTY, FLORIDA

ST. JOHNS RIVER  
 WATER MANAGEMENT DISTRICT  
 P.O. BOX 1429 PALATKA, FLORIDA

DRAWN: N.J.G. DATE: DECEMBER 17, 2020 REVIEWER: W.R.C.  
 SCALE: AS NOTED DESIGNER: W.R.C. SECTION CHIEF: W.R.C.

NEEDLE BEAM FRAME

CERTIFICATION:  
 WILLIAM R. COTE  
 P.E. NUMBER: 53746  
 DATE: DECEMBER 17, 2020

FILE NAME:  
 S-157 NEEDLE BEAM REHAB.dwg  
 PROJECT NO.:  
 SHEET:  
 S1