



CITY OF CONROE

Est. 1904

City of Conroe
PO Box 3066
Conroe, Texas 77305

ADDENDUM NO. 1

DATE ISSUED: May 20, 2019

PROJECT NAME: Bid #052319 Mowing and Landscape Services – Deison Tech Park

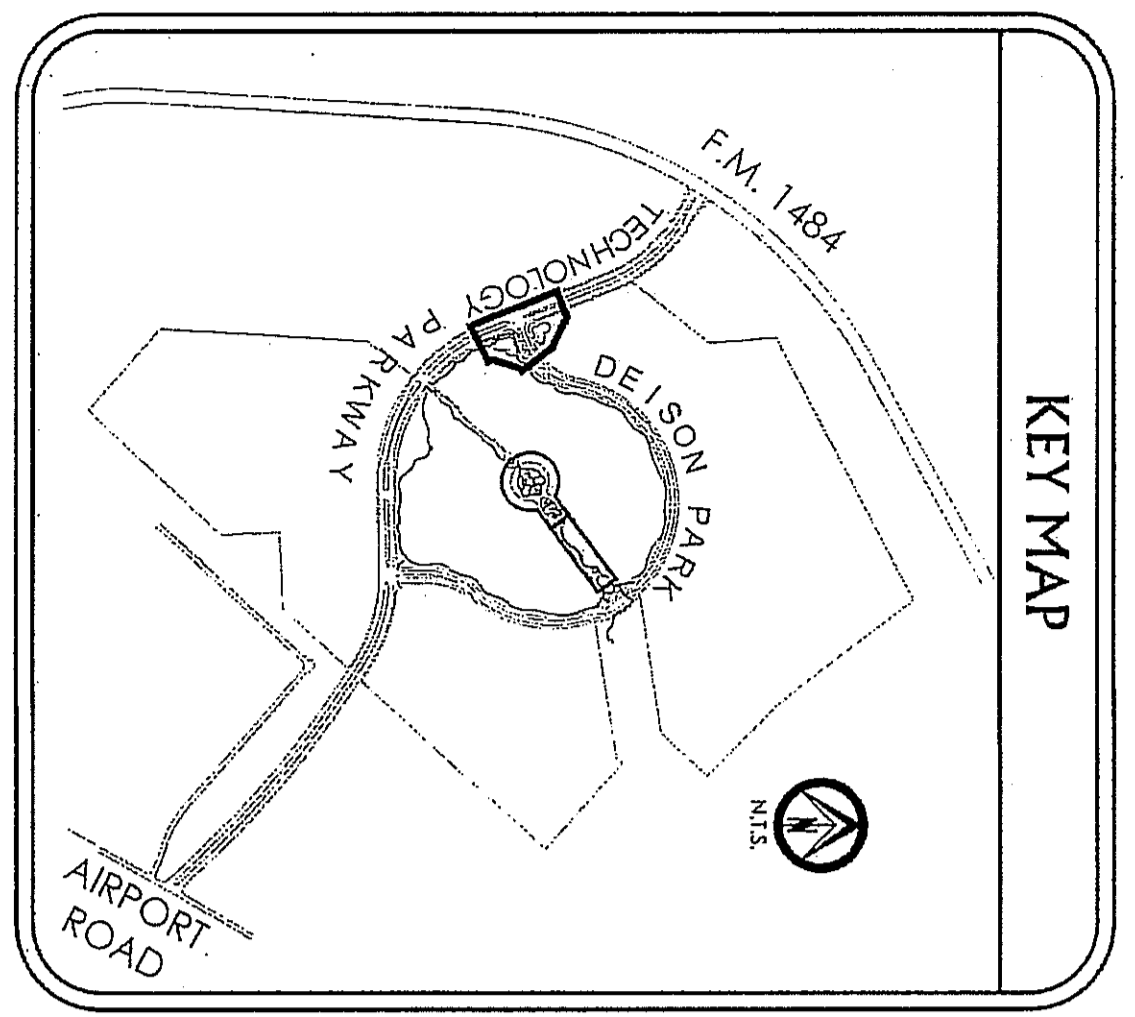
This revision shall be considered part of the contract documents for the above named project and shall be incorporated integrally with the previously issued documents. Wherein provisions of the revisions differ from the provisions of the original documents and/or the provisions of previously issued addendum, the provisions of this revision shall govern and take precedence.

Q & A

- 1.) How many controllers are there?
 - a. There are two controllers, one at the gateway sign towers and one in the promenade by the ponds.
- 2.) Is it a two wire system?
 - a. Yes.
- 3.) How many zones?
 - a. 34 zones and 23 zones respectively.
- 4.) Attached is the Irrigation As-Builts

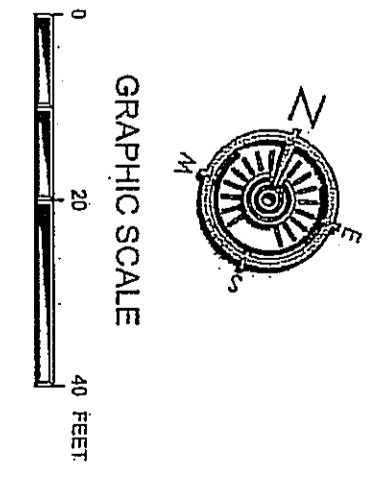
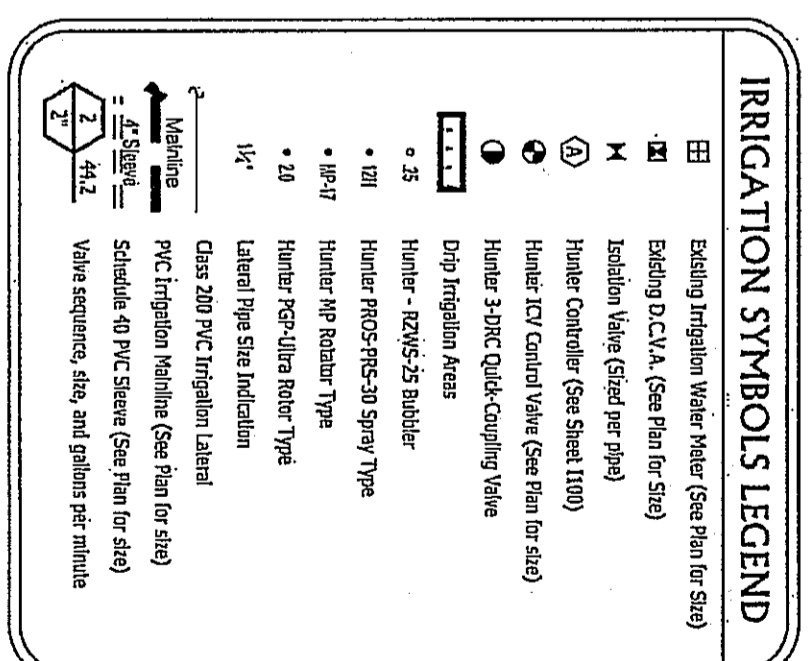
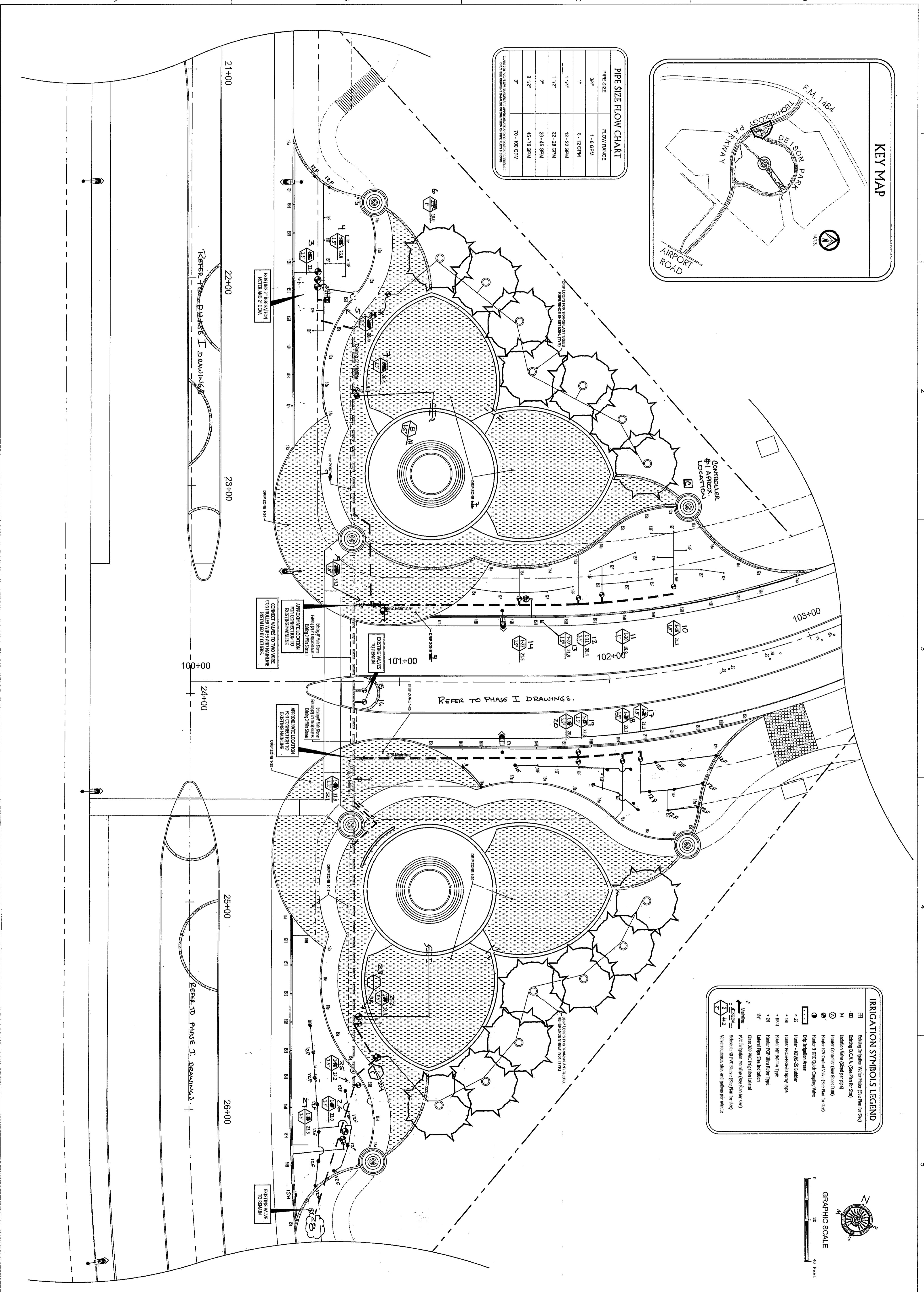
End of Addendum No. 1

Kristina Colville, CPPO CPPB
Purchasing Manager



PIPE SIZE	FLOW RANGE
3/4"	1 - 8 GPM
1"	8 - 12 GPM
1 1/4"	12 - 22 GPM
2"	28 - 45 GPM
2 1/2"	45 - 70 GPM
3"	70 - 100 GPM

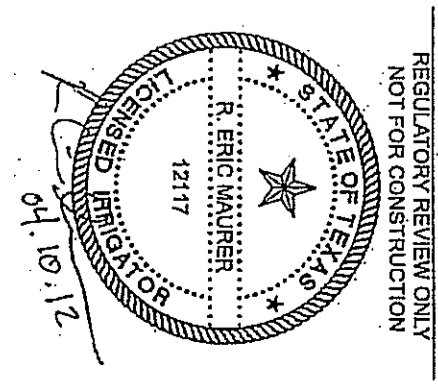
CONNECTIONS TO EXISTING SYSTEMS SHALL BE MADE AT THE POINT OF INTERFERENCE TO THE EXISTING SYSTEM. THE EXISTING SYSTEM SHALL BE MAINTAINED AT ALL TIMES.



DEISON TECHNOLOGY PARK
MONTGOMERY COUNTY, TEXAS

ISSUE DATE:

IRRIGATION PLAN
GATEWAY



REGULATORY REVIEW ONLY
NOT FOR CONSTRUCTION

THIS PROJECT AND THE DESIGN OF PROFESSIONAL SERVICE ARE THE PROPERTY OF BIRDAIR CONSULTANTS, LLC. ANY REUSE OR REPRODUCTION OF THIS DESIGN OR SERVICE WITHOUT THE WRITTEN AUTHORIZATION OF BIRDAIR CONSULTANTS, LLC. IS PROHIBITED.

COPYRIGHT © 2012

ISSUE DATES:

PROJECT NUMBER: 0990.004

DRAWN BY: DPL, RBK

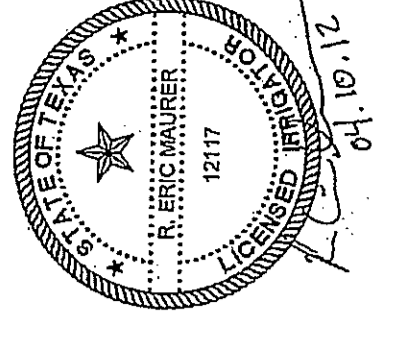
CHECKED BY: MCL

SHEET NO.: 1201

AS BUILTS

DEISON TECHNOLOGY PARK
MONTGOMERY COUNTY, TEXAS
IRRIGATION PLAN
CONSTELLATION PLAZA AND CONFLUENCE PARK

ISSUE DATE:



BURDITT CONSULTANTS, L.L.C.
COPYRIGHT © 2012

THIS PROJECT & THE IDEAS HEREIN, AS AN INSTRUMENT OF SERVICE, ARE THE PROPERTY OF BURDITT CONSULTANTS, L.L.C. ANY REUSE OF THIS ARCHITECT & ENGINEER'S WORK WITHOUT THE WRITTEN CONSENT OF BURDITT CONSULTANTS, L.L.C. IS STRICTLY PROHIBITED.

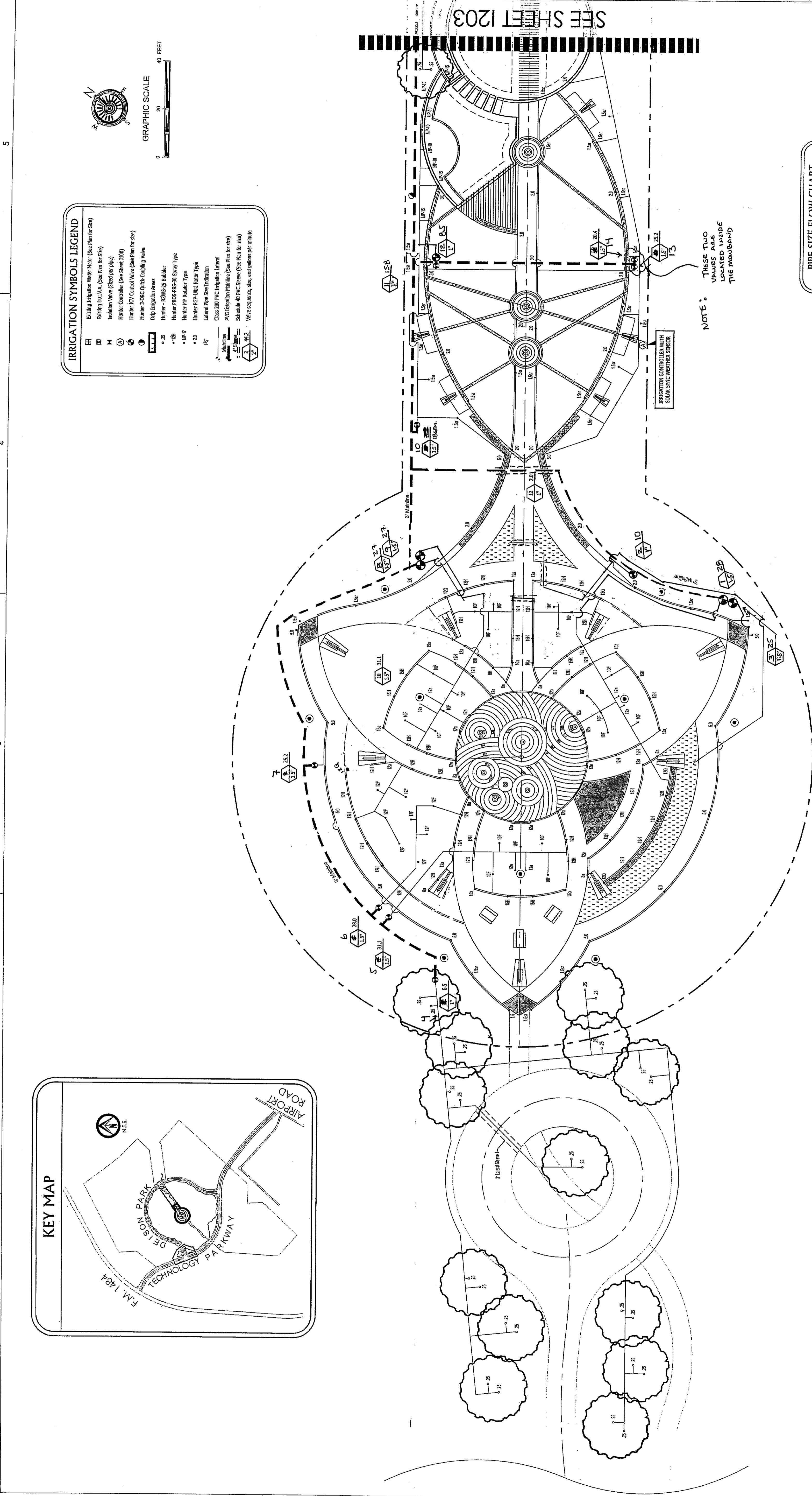
BURDITT CONSULTANTS, L.L.C.
5101 DOWLING
GEORGETOWN, TEXAS 75726
TEL: 817-839-7530
FAX: 817-839-3266

PIPE SIZE FLOW CHART

PIPE SIZE	FLOW RANGE
3/4"	1 - 8 GPM
1"	8 - 12 GPM
1 1/4"	12 - 22 GPM
1 1/2"	22 - 28 GPM
2"	28 - 42 GPM
2 1/2"	42 - 70 GPM
3"	70 - 100 GPM

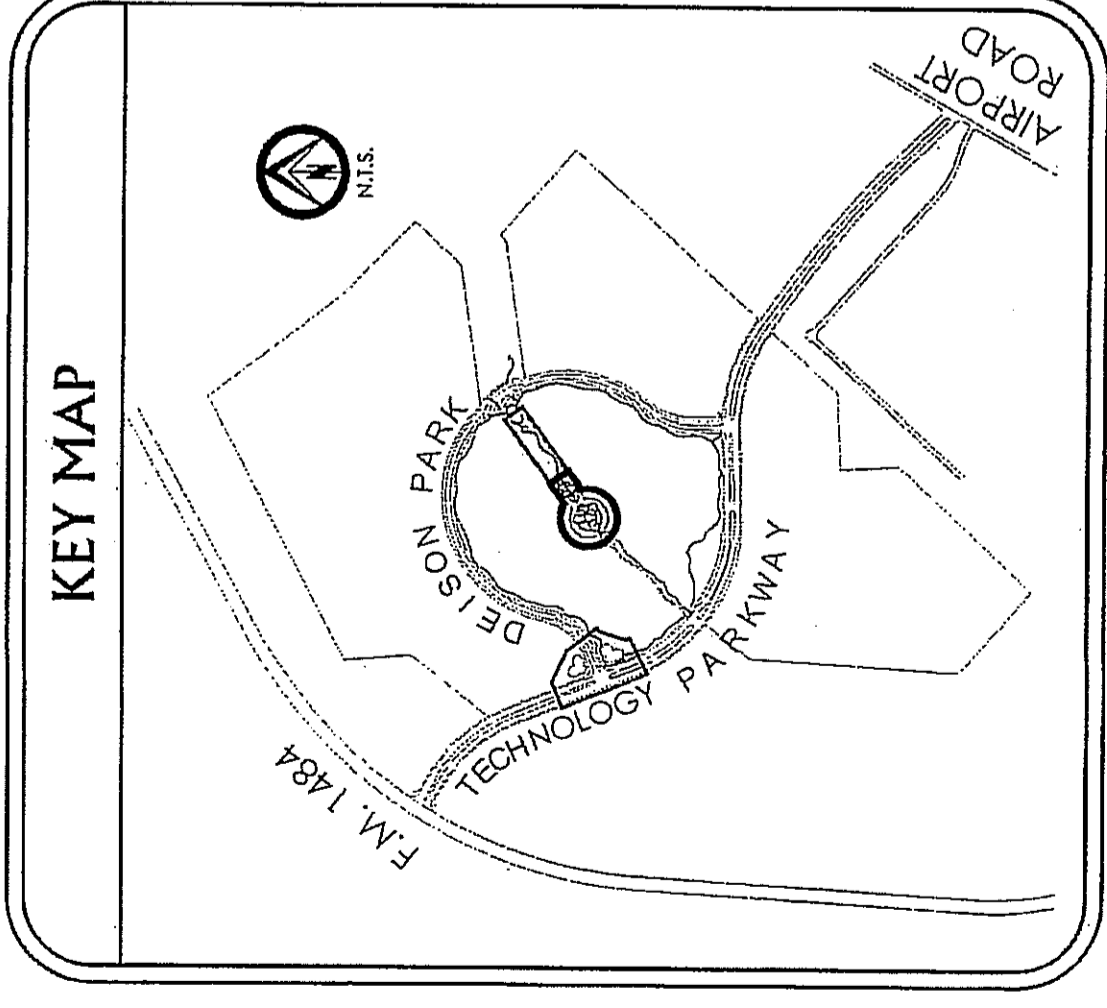
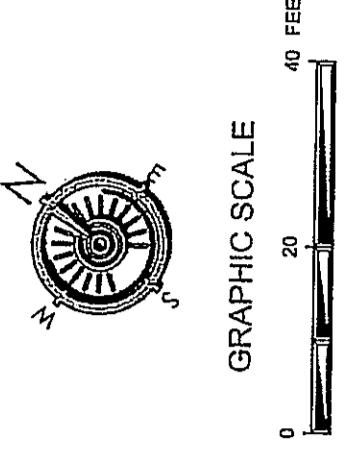
PLEASE SEE PROJECT MANUAL FOR APPROVED AND FOR OTHER REFERENCES. THIS CHART IS FOR INFORMATION ONLY AND IS NOT TO BE USED FOR DESIGN PURPOSES.

NOTE: THESE TWO VALVES ARE LOCATED AT THE ROADBAND



IRRIGATION SYMBOLS LEGEND

- Existing Irrigation Water Meter (See Plan for Size)
- Existing D.C.V.A. (See Plan for Size)
- Isolation Valve (Shaded per pipe)
- Header Controller (See Sheet 1100)
- Header ICV Control Valve (See Plan for size)
- Header 2-3/8" Quick-Coupling Valve
- Drop Irrigation Area
- Header - 12005-25 Bubbler
- Header PIPES-PVC-30 Spray Type
- Header RP Rubber Type
- Header RP-Ultra Rubber Type
- Header RP-Ultra Rubber Type
- Lateral Pipe Size Indication
- Check 200 PVC Irrigation Lateral
- PVC Irrigation Material (See Plan for size)
- Schedule 40 FPC Street (See Plan for size)
- Valve sequence, size, and galling per criteria



Contractor Copy

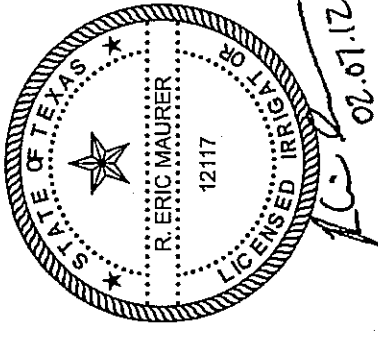
IF THIS LINE DOES NOT MEASURE ONE INCH, THE DRAWING IS NOT TO SCALE. DIMENSIONS SHALL BE TO FACE UNLESS OTHERWISE INDICATED.

JAN 22 2013

These plans have been reviewed for general conformity to the City of Fort Worth building codes, International Building Code and International Fire Code. Any discrepancies between the codes and the plans are the responsibility of the contractor. The Building Official is not responsible for errors in the construction documents. The contractor shall be responsible for obtaining all necessary permits and for the installation of the equipment. Refer to the City of Fort Worth Building Code, Chapter 25, for details on the installation of the equipment.

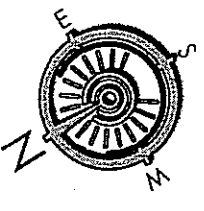
DEISON TECHNOLOGY PARK
MONTGOMERY COUNTY, TEXAS
IRRIGATION PLAN
TECHNOLOGY PARKWAY

ISSUE DATE:



COPYRIGHT © 2012

BURDITT CONSULTANTS, L.L.C.
1101 BURDITT BLVD.
SUITE 100
FORT WORTH, TEXAS 76104
TEL: 817.339.7530
FAX: 817.339.5224



GRAPHIC SCALE

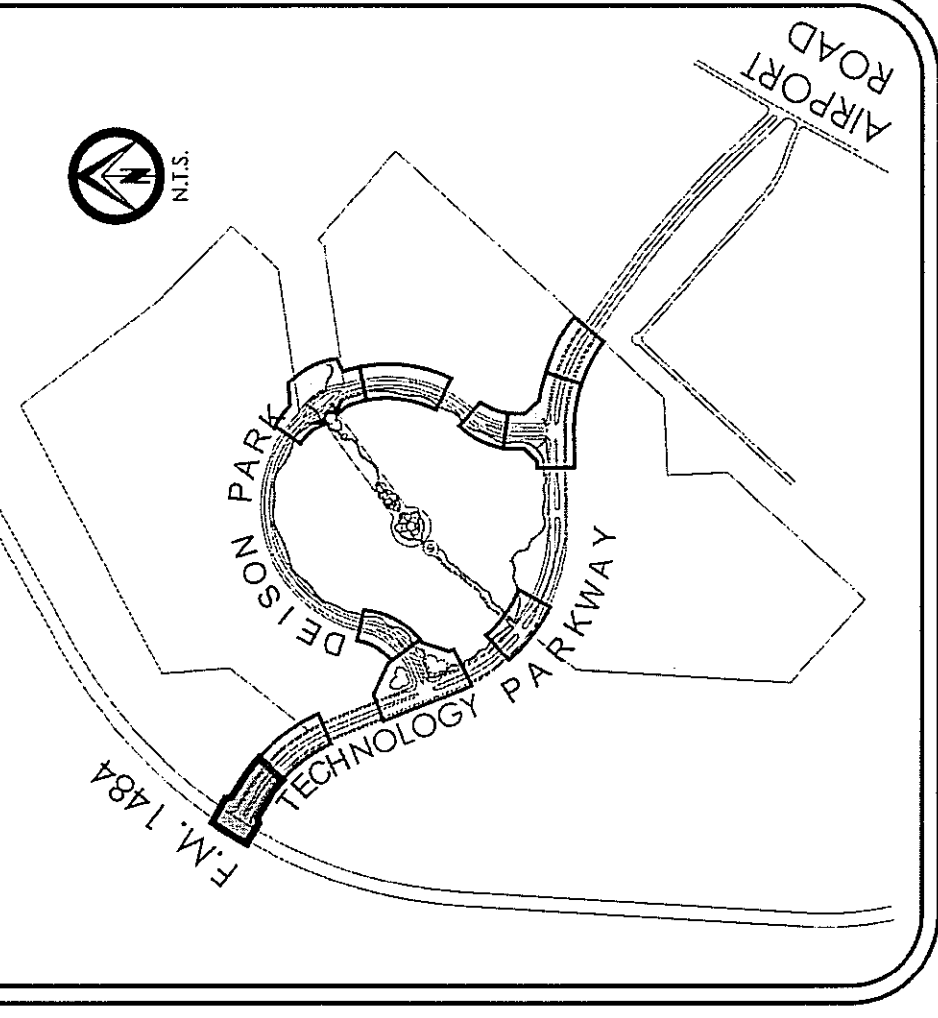
STATEMENT OF COVERAGE

The irrigation system, as shown on this sheet, is anticipated to provide complete coverage through low volume drip irrigation to landscape bed areas. The system is not intended to provide coverage to any roadway in the right-of-way, or to those areas left as existing.

IRRIGATION SYMBOLS LEGEND

- Irrigation Water Meter (See Plan for Size)
- Downstream Check Assembly (See Plan for Size)
- Isolation Valve (Stand per pipe)
- Hunter TD Control Valve (See Sheet LI00)
- Hunter 3-BRC Quick-Coupling Valve
- Drip Irrigation Area
- 3/8" Hunter PMS-PES-35 Spray Type
- 1/4" Hunter PMS-PES-35 Spray Type
- 1/4" Lateral Pipe Size Indication
- 200' PVC Irrigation Lateral
- PVC Irrigation Mainline (See Plan for Size)
- Schedule 40 PVC Sleeve (See Plan for Size)
- Valve sequence, size, and gallons per minute

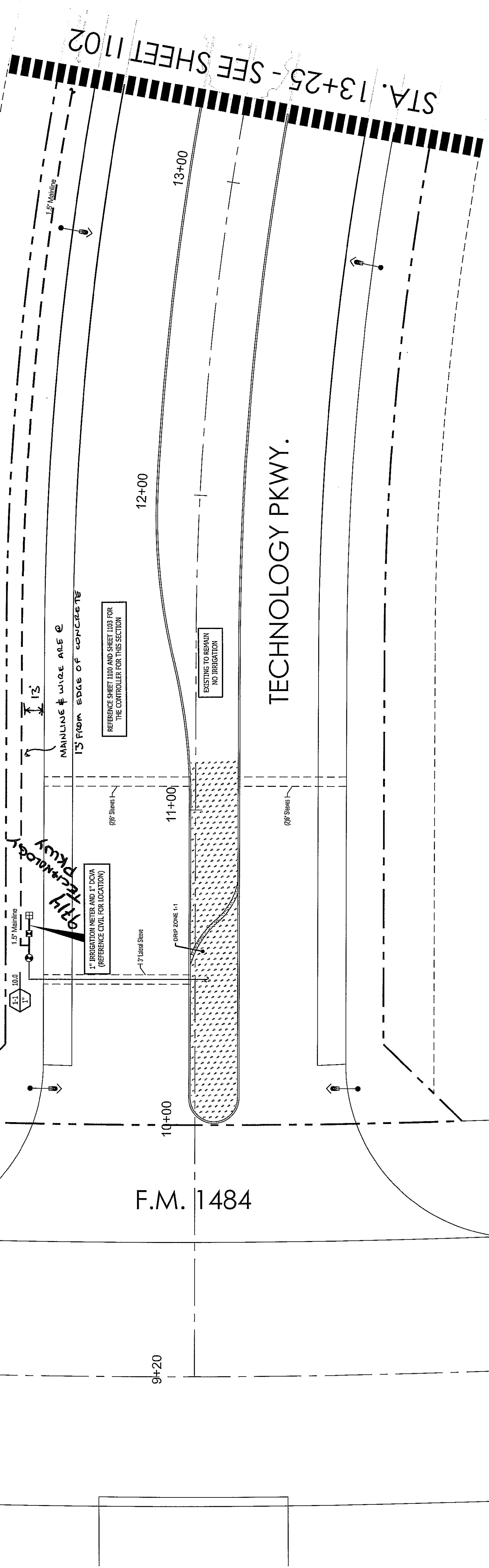
KEY MAP



PIPE SIZE FLOW CHART

PIPE SIZE	FLOW RANGE
3/4"	1 - 8 GPM
1"	8 - 12 GPM
1 1/4"	12 - 22 GPM
1 1/2"	22 - 28 GPM
2"	28 - 45 GPM
2 1/2"	45 - 70 GPM
3"	70 - 100 GPM

CLASSIFIED INFORMATION: THIS DRAWING IS THE PROPERTY OF BURDITT CONSULTANTS, L.L.C. AND IS NOT TO BE REPRODUCED OR COPIED IN ANY MANNER WITHOUT THE WRITTEN PERMISSION OF BURDITT CONSULTANTS, L.L.C.



STA. 13+25 - SEE SHEET 1102

TECHNOLOGY PKWY.

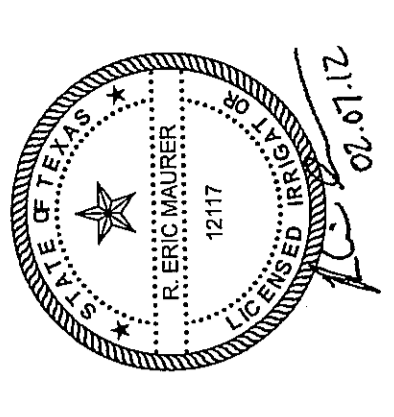
F.M. 1484

1 2 3 4 5

1 2 3 4 5

BURDUM
CONSULTANTS, LLC
310 Bluffview
Cotulla, TX 77901
Tel: (361) 765-3240
Fax: (361) 765-3240

THIS PROJECT & THE IDEAS
HEREIN ARE THE PROPERTY OF
BURDUM CONSULTANTS, LLC
AND WILL BE USED IN WHOLE OR IN
PART FOR THE DESIGN OF
ANY PROJECT WITHOUT THE
WRITTEN CONSENT OF
BURDUM CONSULTANTS, LLC.
COPYRIGHT © 2012



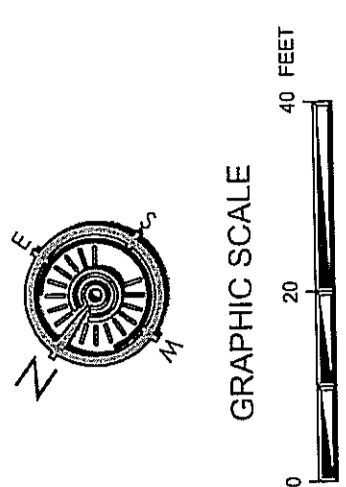
DEISON TECHNOLOGY PARK
MONTGOMERY COUNTY, TEXAS
IRRIGATION PLAN
TECHNOLOGY PARKWAY

Contractor Copy

IF THE LINE DOES NOT MEASURE ONE
INCH THIS DRAWING IS NOT TO SCALE
AND SHOULD BE USED FOR
CONSTRUCTION PURPOSES ONLY.
PROFESSIONAL ENGINEER
PROJECT NUMBER:
0990.004

ISSUE DATES:
DRAWN BY: DPZ, RBW
CHECKED BY: MCL

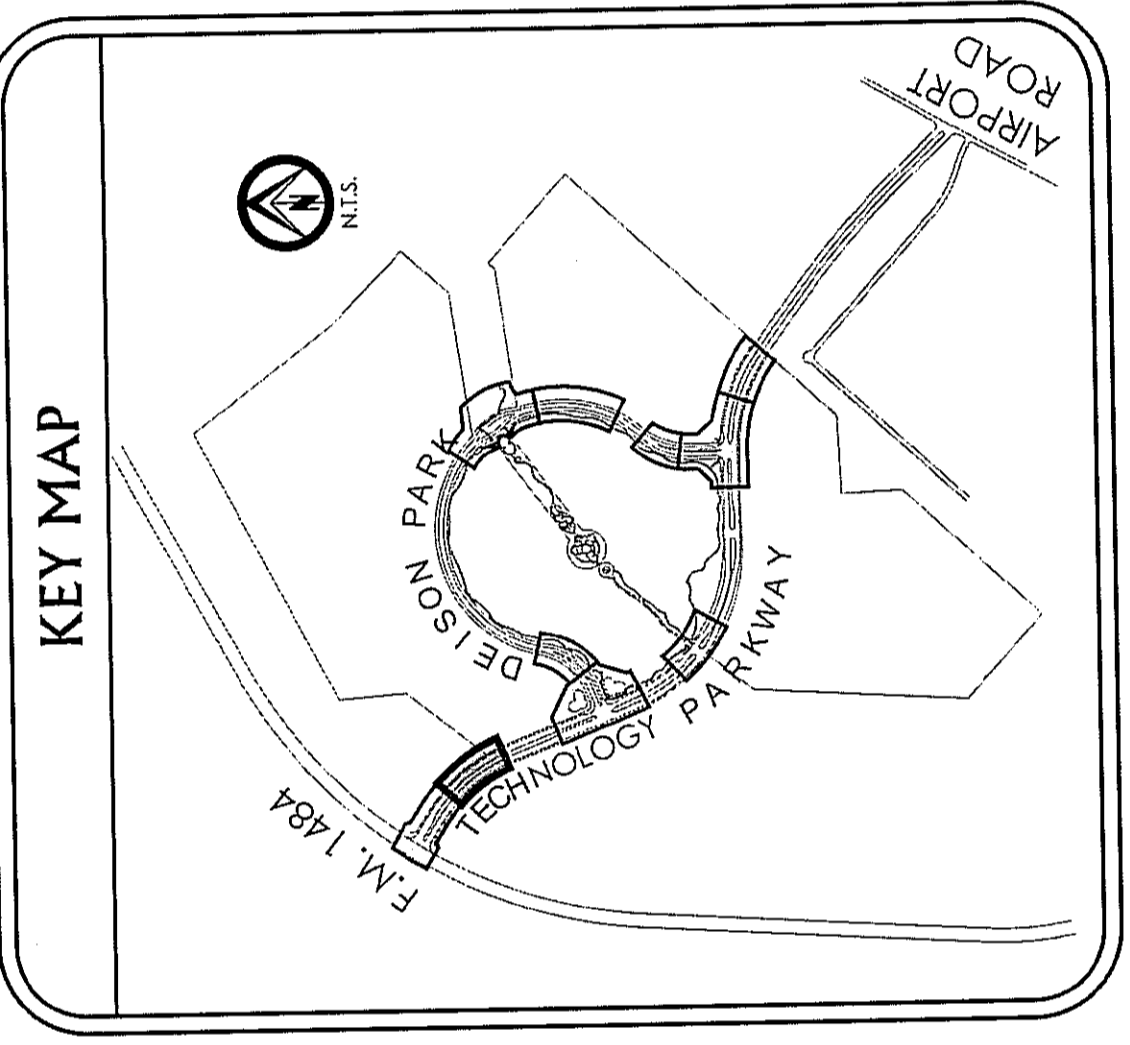
SHEET NO.: **1102**



STATEMENT OF COVERAGE
The irrigation system, as shown on this plan, is intended to provide
adequate water to the landscape in the areas shown. Coverage is not provided along
roadways in the rights-of-way, or to those areas left as existing.

IRRIGATION SYMBOLS LEGEND

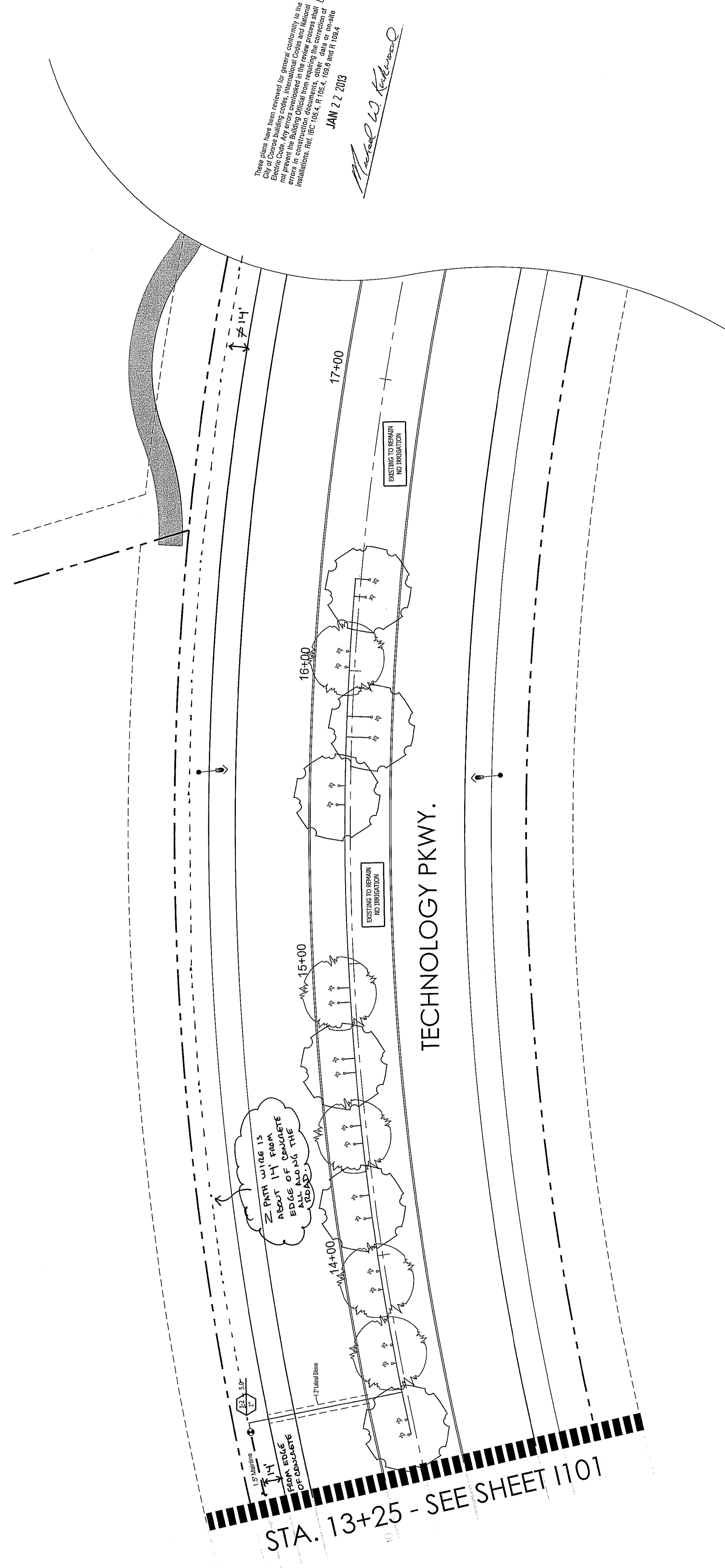
- Irrigation Water Meter (See Plan for site)
- Double Check Assembly (See Plan for site)
- Isolation Valve (Shaded per pipe)
- Hunter Controller (See Sheet L100)
- Hunter DC Control Valve (See Plan for site)
- Hunter 3/8" Quick-Coupling Valve
- Dip Irrigation Area
- Hunter - RZNV-25 Builder
- Hunter PROS-PRS-25 Spray Type
- Lateral Pipe Size Indication
- Class 200 PVC Irrigation Lateral
- PVC Irrigation Mainline (See Plan for site)
- Schedule 40 PVC Elbow (See Plan for site)
- Valve sequence, size, and gallons per minute



PIPE SIZE FLOW CHART

PIPE SIZE	FLOW RANGE
3/4"	1 - 8 GPM
1"	8 - 12 GPM
1 1/4"	12 - 22 GPM
1 1/2"	22 - 28 GPM
2"	28 - 45 GPM
2 1/2"	45 - 70 GPM
3"	70 - 100 GPM

CONSTRAINTS: THIS CHART IS FOR GENERAL INFORMATION ONLY. ALWAYS REFER TO THE SPECIFICATIONS FOR THE EXACT PIPE SIZE, WALL THICKNESS, AND PRESSURE RATING.



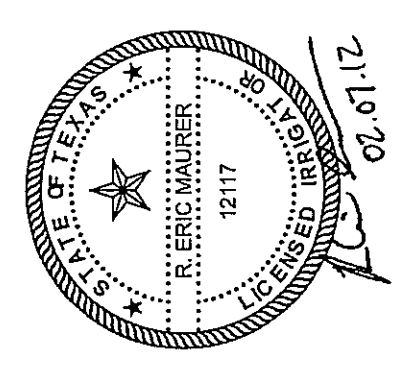
This plan has been reviewed in general conformity to the
City of Cotulla Building Code, Internal Codes and
not prevent the Building Official from proceeding with
inspections. Ref. IRC, IS-C, R 102.4, R 102.4, R 102.4 and R 102.4
JAN 27 2013
Michael W. Kent

These plans have been reviewed for general conformity to the Electrical Code building, International Electrical Code and National Electrical Code. The reviewer does not warrant the accuracy of the information provided in the drawings. The contractor shall be responsible for obtaining the correct data on-site and for all installations. Ref: IRC 100.4, 100.6 and 100.8

JAN 22 2013

DEISON TECHNOLOGY PARK
MONTGOMERY COUNTY, TEXAS
IRRIGATION PLAN
TECHNOLOGY PARKWAY

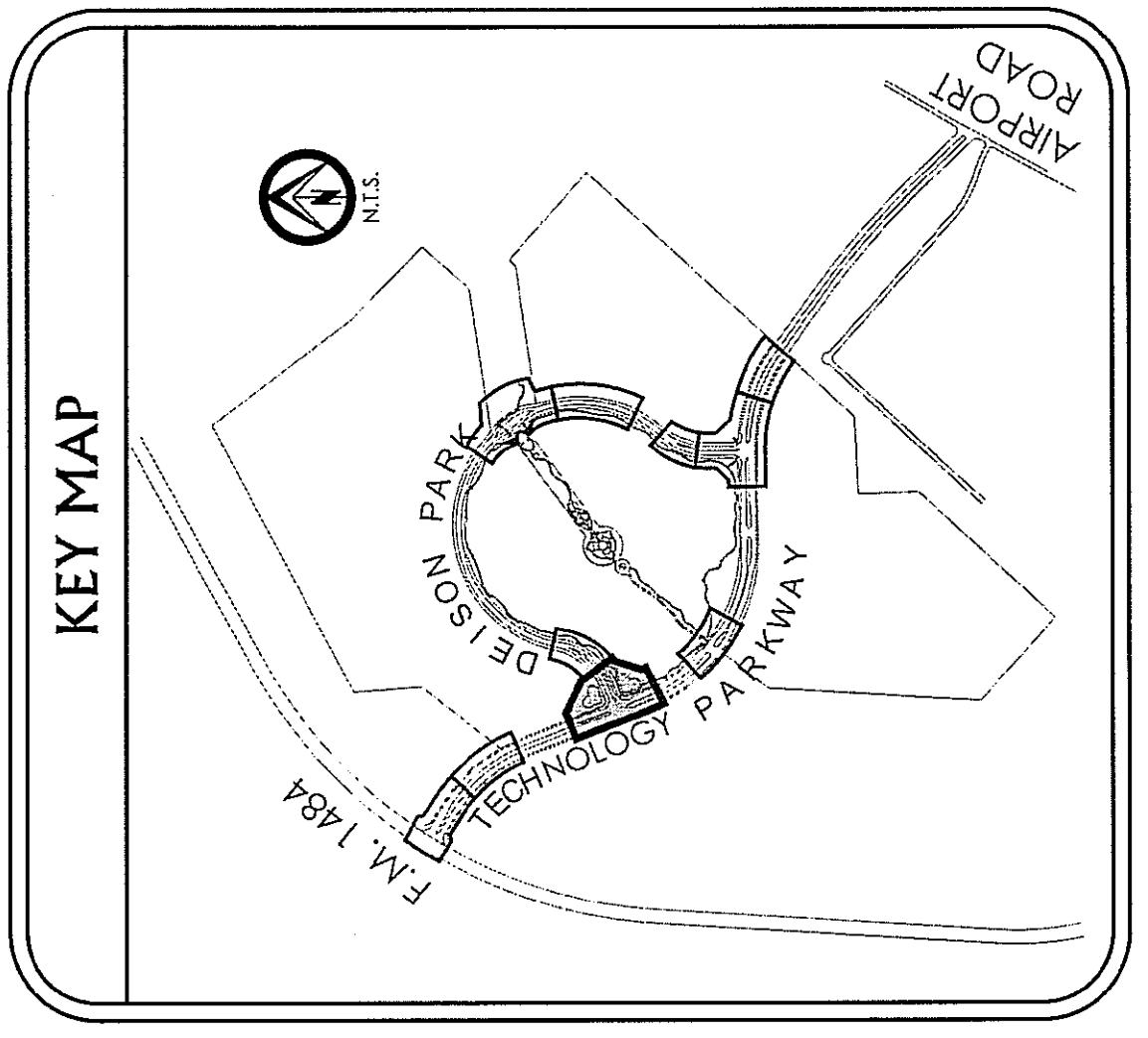
ISSUE DATE:



BURDITT CONSULTANTS, L.L.C.
COPYRIGHT © 2012

ERIC MAURER
REGISTERED PROFESSIONAL ENGINEER
STATE OF TEXAS
LICENSE NO. 12117
EXPIRES 01/17/12

BURDITT CONSULTANTS, L.L.C.
11015 BRIDGE
COURT, SUITE 100
MONTGOMERY, TEXAS 77124
TEL: (281) 256-3841
FAX: (281) 256-3840



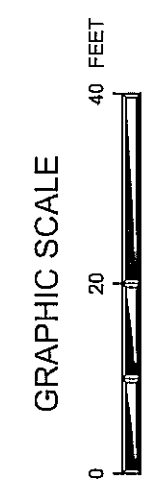
PIPE SIZE FLOW CHART

PIPE SIZE	FLOW RANGE
3/4"	1 - 8 GPM
1"	8 - 12 GPM
1 1/4"	12 - 22 GPM
1 1/2"	22 - 28 GPM
2"	28 - 45 GPM
2 1/2"	45 - 70 GPM
3"	70 - 100 GPM

NOTE: THIS CHART IS FOR GENERAL INFORMATION ONLY. THE EXACT FLOW CAPACITY OF ANY PIPE SIZE SHOULD BE DETERMINED BY THE MANUFACTURER'S DATA.

IRRIGATION SYMBOLS LEGEND

- Injection Water Meter (See Plan for size)
- Double Check Assembly (See Plan for size)
- Isolation Valve (See Plan for size)
- Hunter ECV Control Valve (See Sheet L100)
- Hunter 3-TBC Quick-Coupling Valve
- Drip Irrigation Area
- Hunter - R20V25 Baller
- Hunter R20V25 Spray Type
- Class 200 PVC Irrigation Lateral
- Schedule 40 PVC Sleeve (See Plan for size)
- Value sequence, size, and gallons per minute



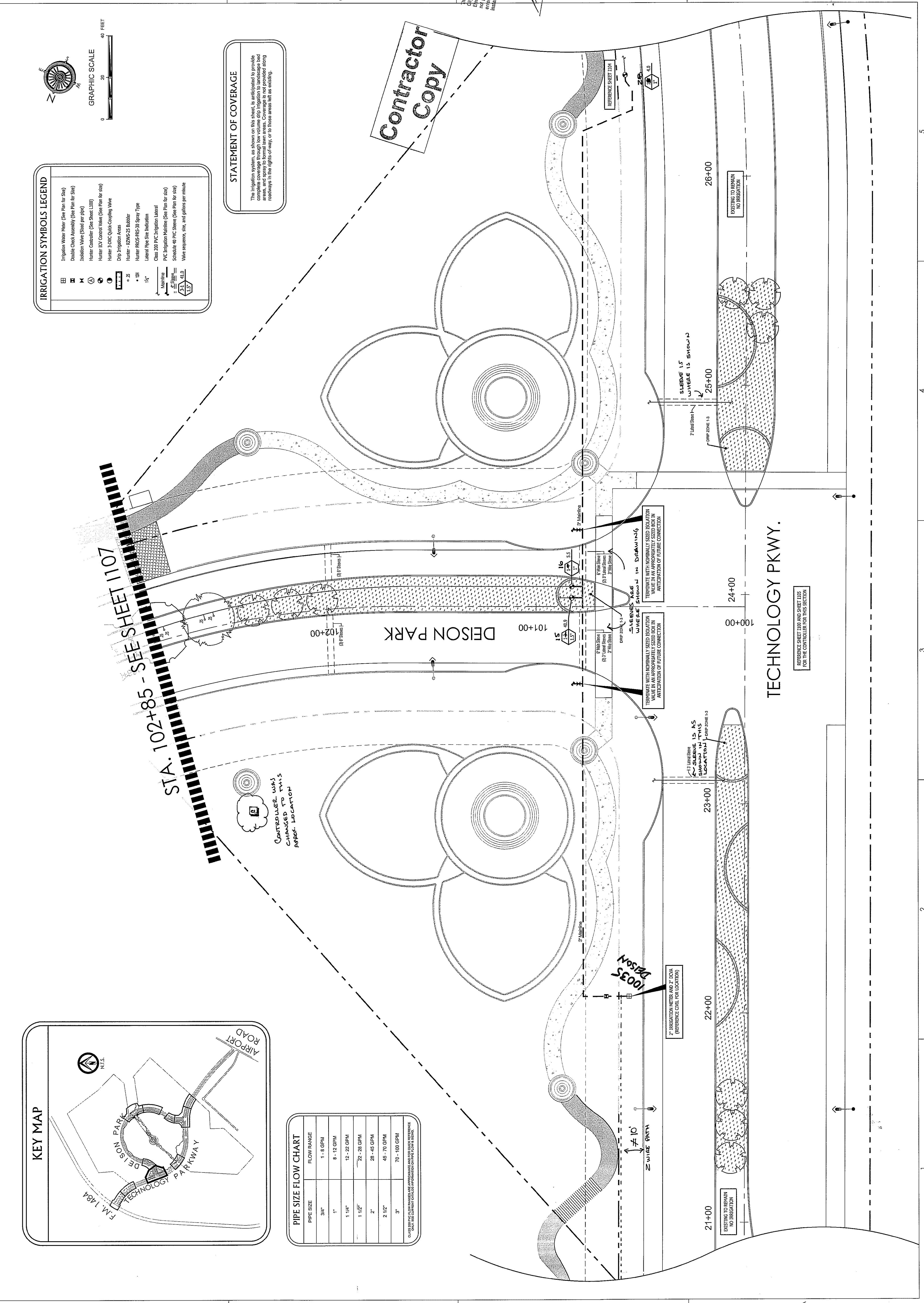
STATEMENT OF COVERAGE

The irrigation system, as shown on this sheet, is anticipated to provide complete coverage through low volume drip irrigation to adjacent road and roadways in the rights-of-way, or to those areas left as existing.

Contractor Copy

STA. 102+85 - SEE SHEET 1107

CONTROL WAS CHANGED TO THIS APPROX. LOCATION



TECHNOLOGY PKWY.

REFERENCE SHEET L100 AND SHEET L105 FOR THE CONTROLLER FOR THIS SECTION

TERMINATE WITH NOMINALLY SIZED ISOLATION VALVE AND 2" DIA. SLEEVE AS SHOWN IN DRAWINGS. ANTICIPATION OF FUTURE CONNECTION

TERMINATE WITH NOMINALLY SIZED ISOLATION VALVE AND 2" DIA. SLEEVE AS SHOWN IN DRAWINGS. ANTICIPATION OF FUTURE CONNECTION

TERMINATE WITH NOMINALLY SIZED ISOLATION VALVE AND 2" DIA. SLEEVE AS SHOWN IN DRAWINGS. ANTICIPATION OF FUTURE CONNECTION

TERMINATE WITH NOMINALLY SIZED ISOLATION VALVE AND 2" DIA. SLEEVE AS SHOWN IN DRAWINGS. ANTICIPATION OF FUTURE CONNECTION

TERMINATE WITH NOMINALLY SIZED ISOLATION VALVE AND 2" DIA. SLEEVE AS SHOWN IN DRAWINGS. ANTICIPATION OF FUTURE CONNECTION

TERMINATE WITH NOMINALLY SIZED ISOLATION VALVE AND 2" DIA. SLEEVE AS SHOWN IN DRAWINGS. ANTICIPATION OF FUTURE CONNECTION

TERMINATE WITH NOMINALLY SIZED ISOLATION VALVE AND 2" DIA. SLEEVE AS SHOWN IN DRAWINGS. ANTICIPATION OF FUTURE CONNECTION

TERMINATE WITH NOMINALLY SIZED ISOLATION VALVE AND 2" DIA. SLEEVE AS SHOWN IN DRAWINGS. ANTICIPATION OF FUTURE CONNECTION

TERMINATE WITH NOMINALLY SIZED ISOLATION VALVE AND 2" DIA. SLEEVE AS SHOWN IN DRAWINGS. ANTICIPATION OF FUTURE CONNECTION

TERMINATE WITH NOMINALLY SIZED ISOLATION VALVE AND 2" DIA. SLEEVE AS SHOWN IN DRAWINGS. ANTICIPATION OF FUTURE CONNECTION

TERMINATE WITH NOMINALLY SIZED ISOLATION VALVE AND 2" DIA. SLEEVE AS SHOWN IN DRAWINGS. ANTICIPATION OF FUTURE CONNECTION

TERMINATE WITH NOMINALLY SIZED ISOLATION VALVE AND 2" DIA. SLEEVE AS SHOWN IN DRAWINGS. ANTICIPATION OF FUTURE CONNECTION

TERMINATE WITH NOMINALLY SIZED ISOLATION VALVE AND 2" DIA. SLEEVE AS SHOWN IN DRAWINGS. ANTICIPATION OF FUTURE CONNECTION

TERMINATE WITH NOMINALLY SIZED ISOLATION VALVE AND 2" DIA. SLEEVE AS SHOWN IN DRAWINGS. ANTICIPATION OF FUTURE CONNECTION

TERMINATE WITH NOMINALLY SIZED ISOLATION VALVE AND 2" DIA. SLEEVE AS SHOWN IN DRAWINGS. ANTICIPATION OF FUTURE CONNECTION

TERMINATE WITH NOMINALLY SIZED ISOLATION VALVE AND 2" DIA. SLEEVE AS SHOWN IN DRAWINGS. ANTICIPATION OF FUTURE CONNECTION

TERMINATE WITH NOMINALLY SIZED ISOLATION VALVE AND 2" DIA. SLEEVE AS SHOWN IN DRAWINGS. ANTICIPATION OF FUTURE CONNECTION

TERMINATE WITH NOMINALLY SIZED ISOLATION VALVE AND 2" DIA. SLEEVE AS SHOWN IN DRAWINGS. ANTICIPATION OF FUTURE CONNECTION

TERMINATE WITH NOMINALLY SIZED ISOLATION VALVE AND 2" DIA. SLEEVE AS SHOWN IN DRAWINGS. ANTICIPATION OF FUTURE CONNECTION

TERMINATE WITH NOMINALLY SIZED ISOLATION VALVE AND 2" DIA. SLEEVE AS SHOWN IN DRAWINGS. ANTICIPATION OF FUTURE CONNECTION

TERMINATE WITH NOMINALLY SIZED ISOLATION VALVE AND 2" DIA. SLEEVE AS SHOWN IN DRAWINGS. ANTICIPATION OF FUTURE CONNECTION

TERMINATE WITH NOMINALLY SIZED ISOLATION VALVE AND 2" DIA. SLEEVE AS SHOWN IN DRAWINGS. ANTICIPATION OF FUTURE CONNECTION

TERMINATE WITH NOMINALLY SIZED ISOLATION VALVE AND 2" DIA. SLEEVE AS SHOWN IN DRAWINGS. ANTICIPATION OF FUTURE CONNECTION

TERMINATE WITH NOMINALLY SIZED ISOLATION VALVE AND 2" DIA. SLEEVE AS SHOWN IN DRAWINGS. ANTICIPATION OF FUTURE CONNECTION

TERMINATE WITH NOMINALLY SIZED ISOLATION VALVE AND 2" DIA. SLEEVE AS SHOWN IN DRAWINGS. ANTICIPATION OF FUTURE CONNECTION

SHEET NO.: **1107**

DRAWN BY: DPZ, REM
CHECKED BY: MCL

PROJECT NUMBER:
0990.004

ISSUE DATES:

1 INCH

THIS LINE DOES NOT REPRESENT THE EXACT LOCATION OF THE CENTERLINE OF THE PIPE AND SHOULD NOT BE SCALED FOR DIMENSIONAL INFORMATION.

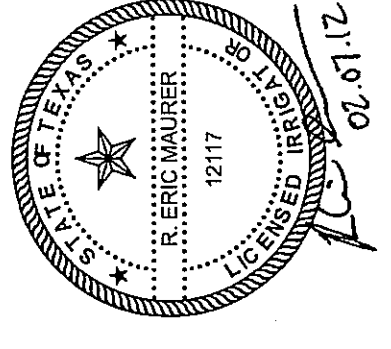
JAN 22 2013

These plans have been reviewed for general conformity to the City of Montgomery Building Code, International Code and National Fire Protection Association Code. The engineer is not responsible for the design of the irrigation system. The engineer is not responsible for the design of the irrigation system. The engineer is not responsible for the design of the irrigation system.

Barbara W. Keck

DEISON TECHNOLOGY PARK
MONTGOMERY COUNTY, TEXAS
IRRIGATION PLAN
DEISON PARK

ISSUE DATE:



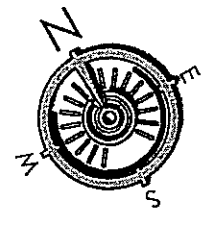
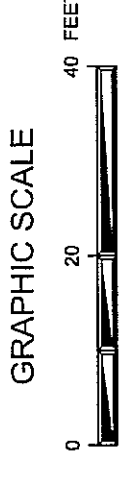
BURDITT CONSULTANTS, L.L.C.
COPYRIGHT © 2012

BURDITT CONSULTANTS, L.L.C.
310 Longmead
Cotter, TX 77304
Tel: (936) 755-9341
Fax: (936) 597-9270

THIS PROJECT & THE IDEAS HEREIN, AS AN INSTRUMENT OF SERVICE, ARE THE PROPERTY OF BURDITT CONSULTANTS, L.L.C. ARCHITECT & ENGINEER. THIS PROJECT & THE IDEAS HEREIN, AS AN INSTRUMENT OF SERVICE, ARE THE PROPERTY OF BURDITT CONSULTANTS, L.L.C. ARCHITECT & ENGINEER.

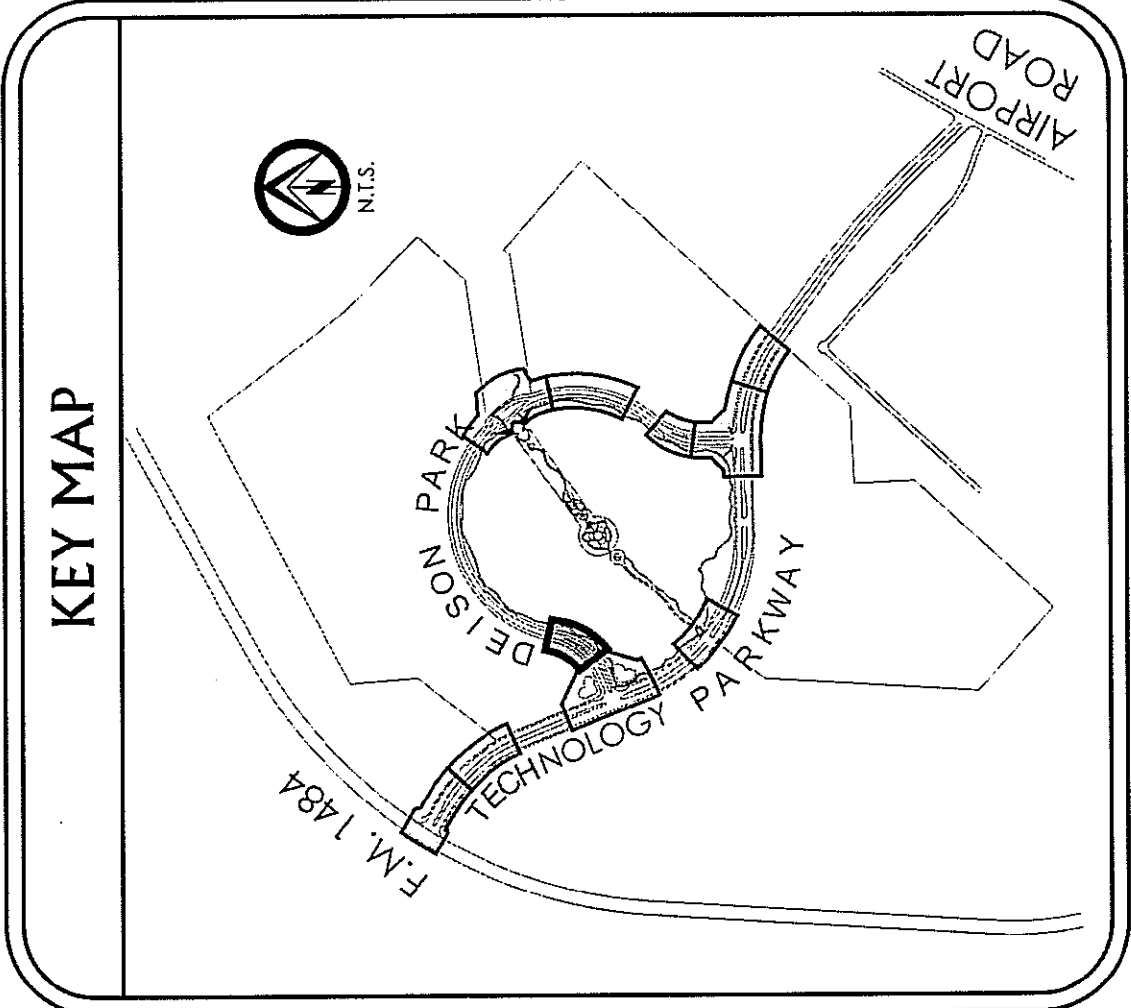
Contractor Copy

STATEMENT OF COVERAGE
The irrigation system, as shown on this sheet, is anticipated to provide coverage to the area shown. Coverage is not provided along roads, and spray to formal lawns areas. Coverage is not provided along roadways in the rights-of-way, or to those areas left as existing.



IRRIGATION SYMBOLS LEGEND

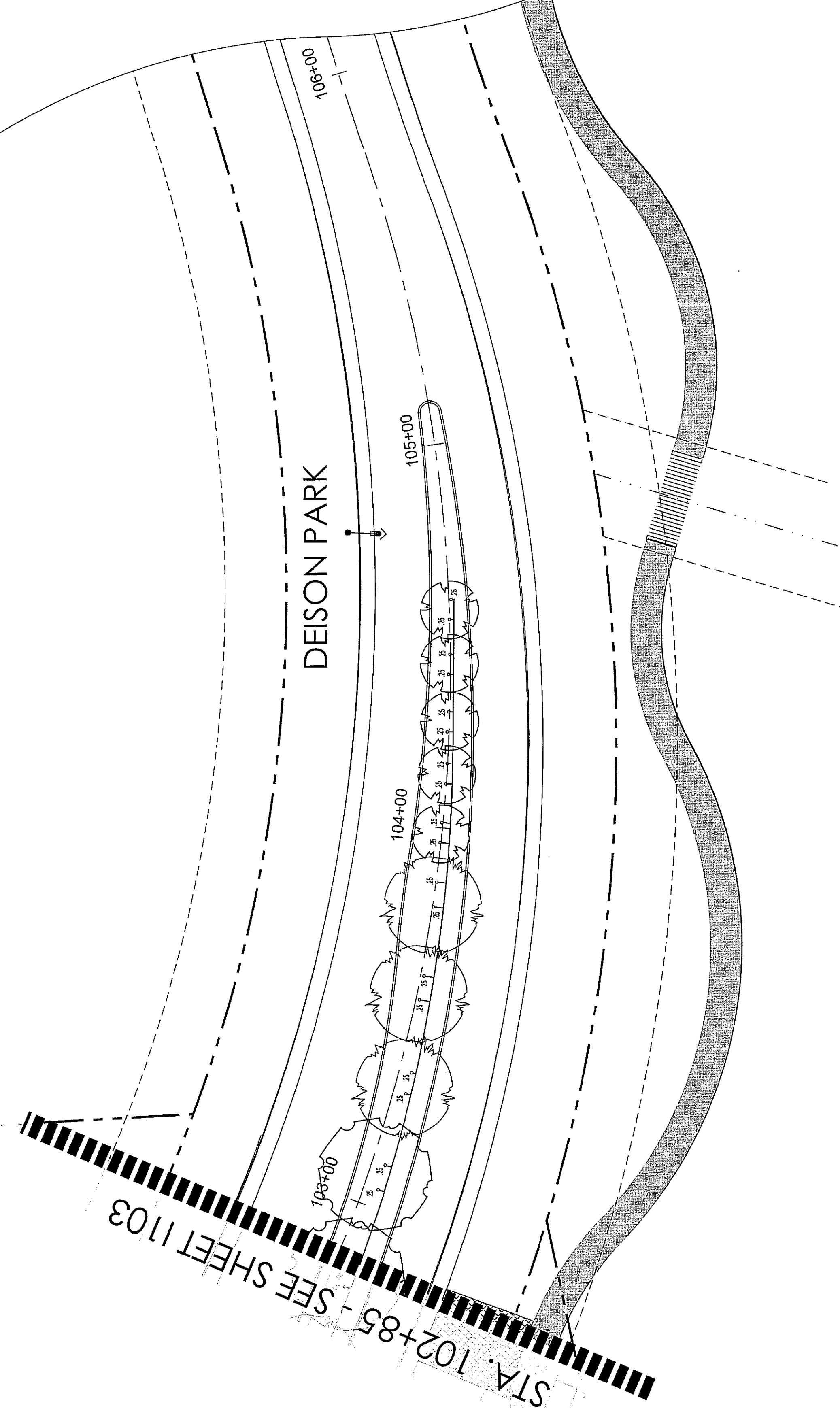
- EB Irrigation Water Meter (See Plan for size)
- Double Check Assembly (See Plan for size)
- Isolation Valve (Check per pipe)
- Hunter ZVC Control Valve (See Plan for size)
- Hunter ZVC Quick-Coupling Valve
- Drip Irrigation Area
- Hunter R20WS-SF Rubber
- Hunter R20WS-SF Spray Type
- Lateral Pipe Size Indication
- Class 200 PVC Irrigation Lateral
- PVC Irrigation Mainline (See Plan for size)
- Schedule 40 PVC Sleeve (See Plan for size)
- Valve sequence, size, and gallons per minute



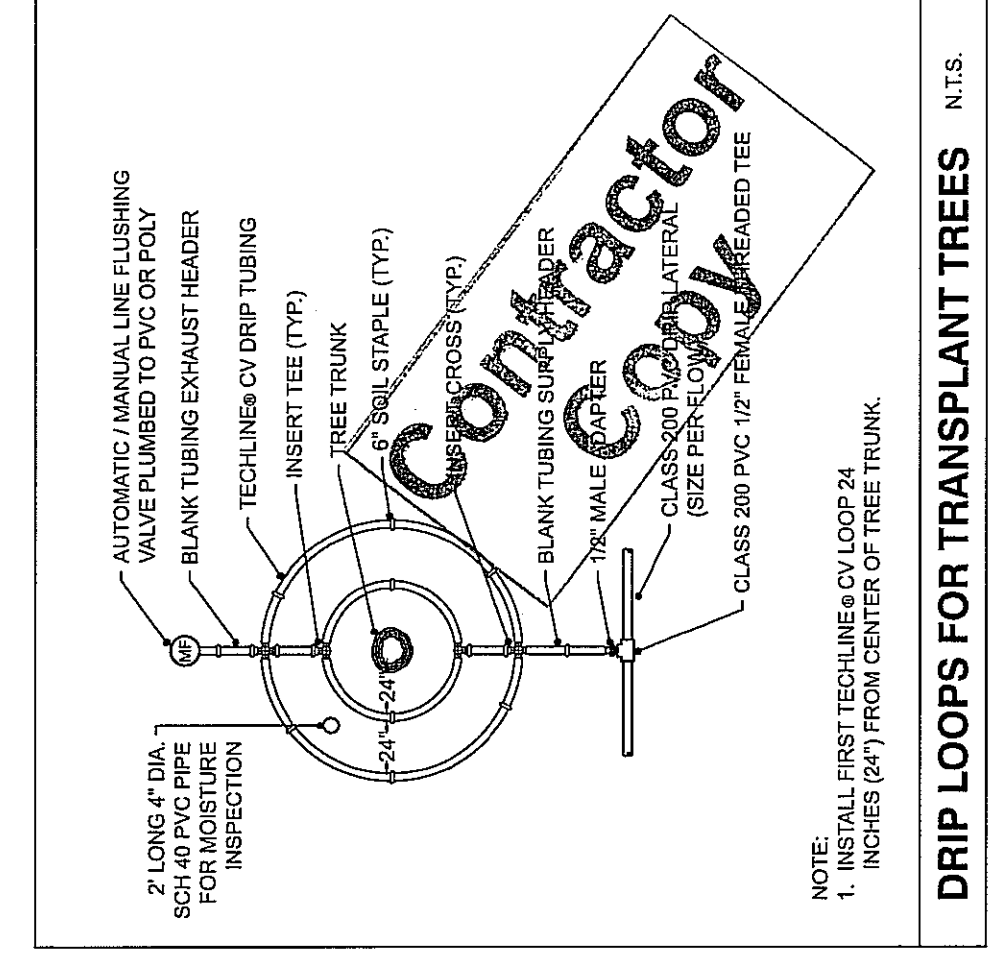
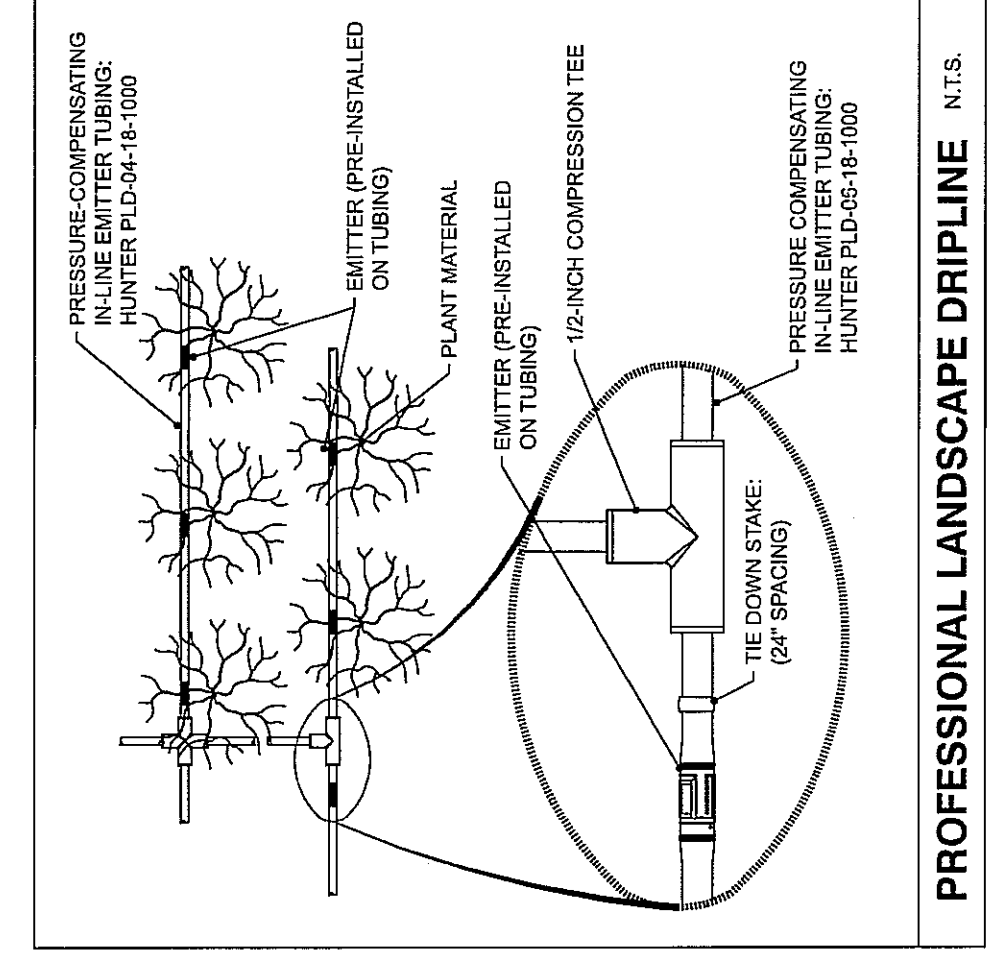
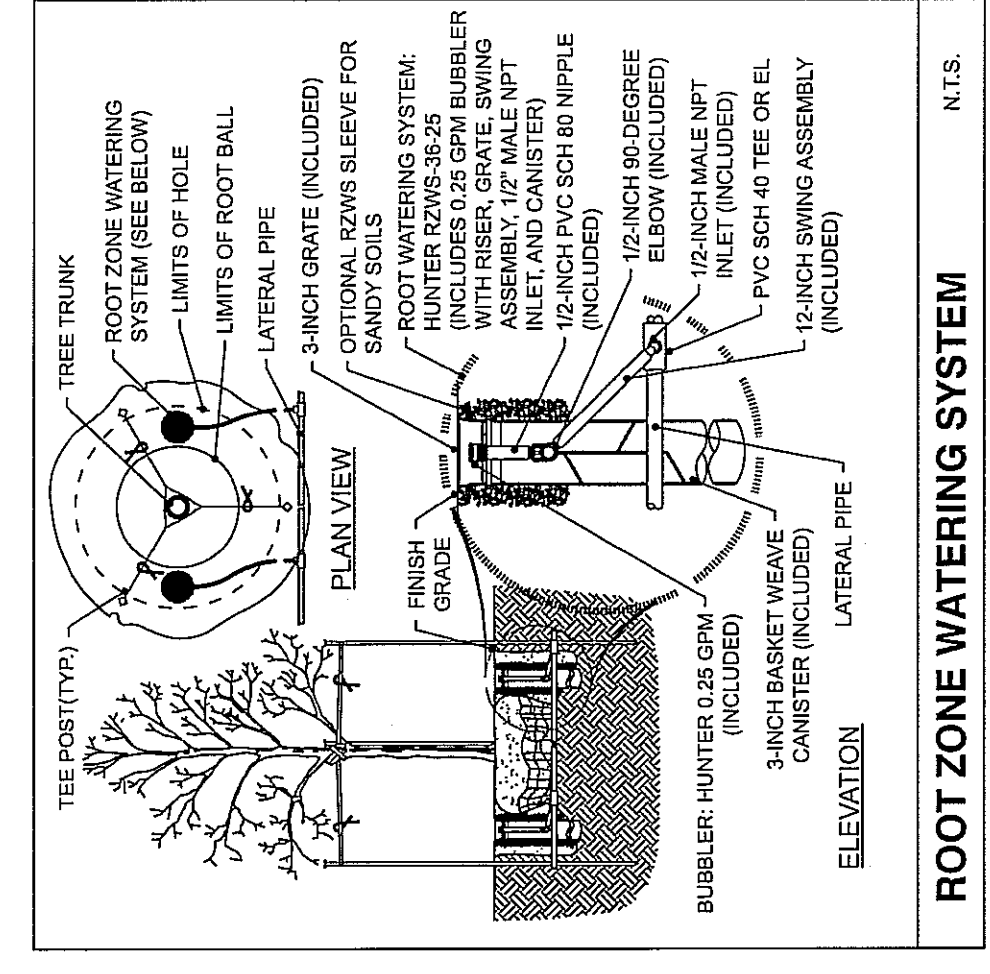
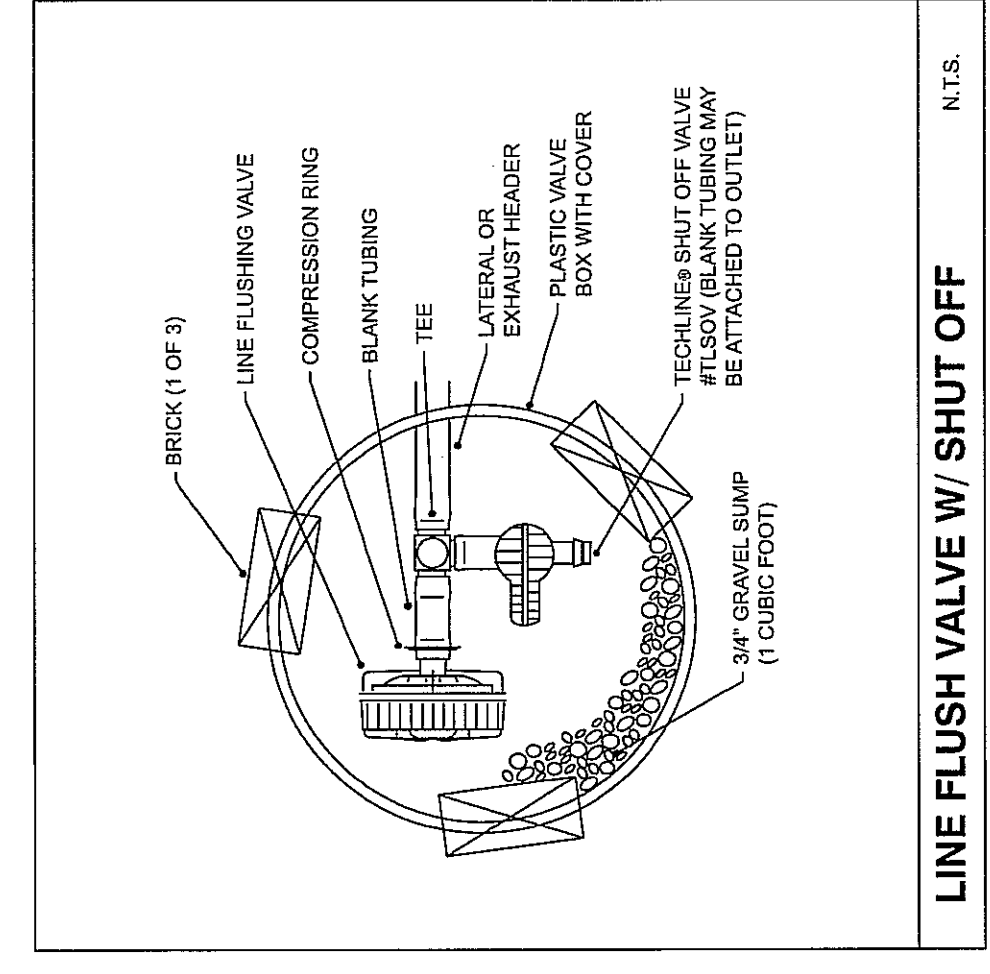
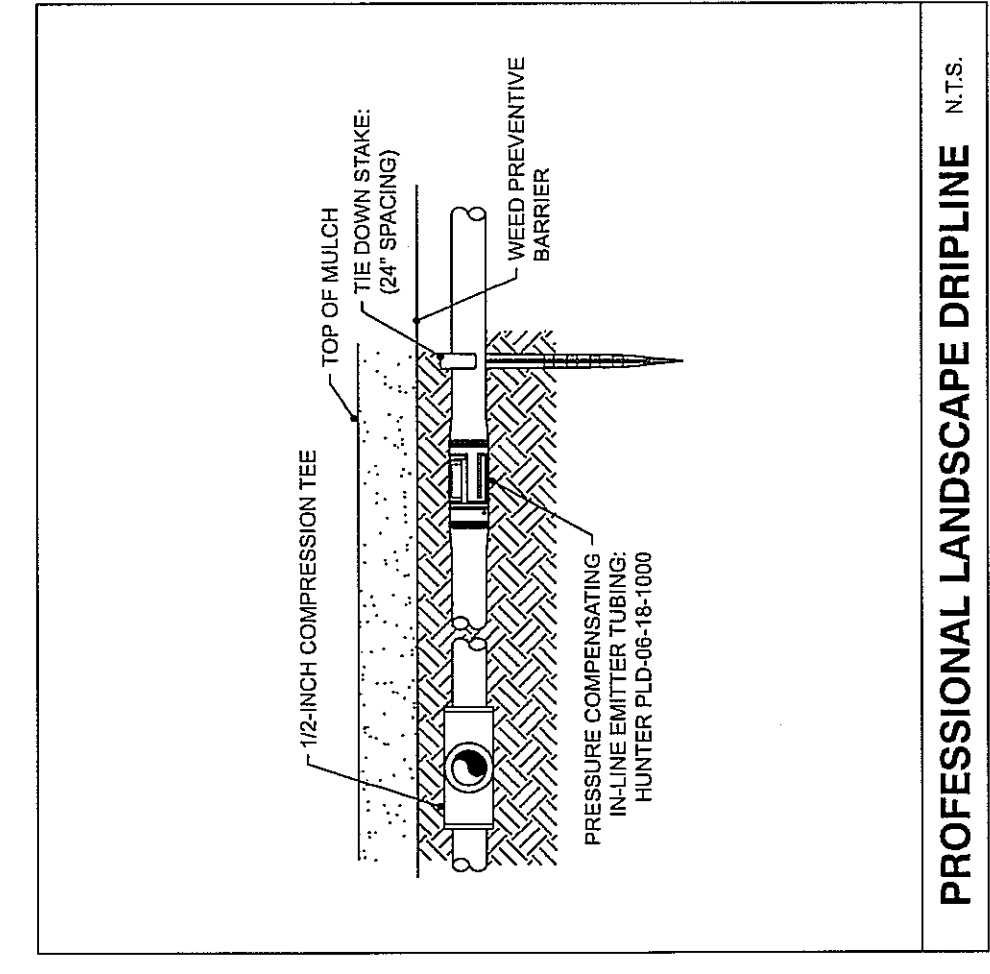
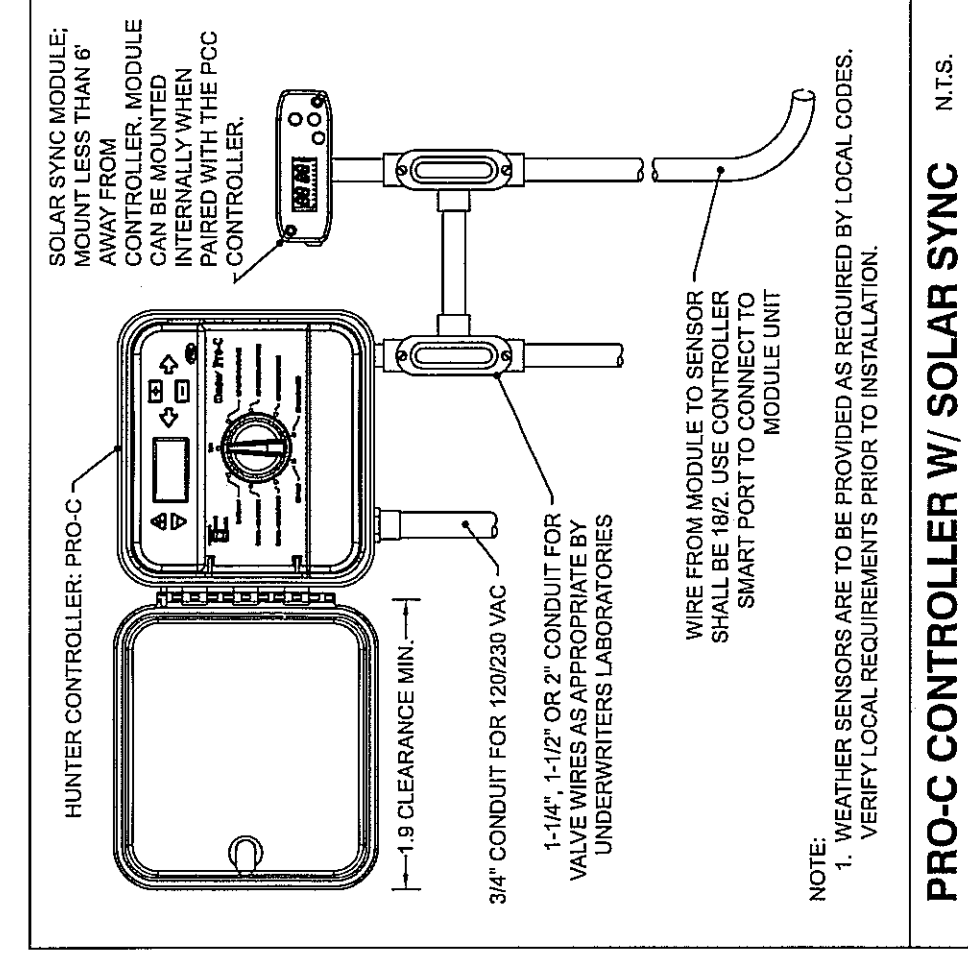
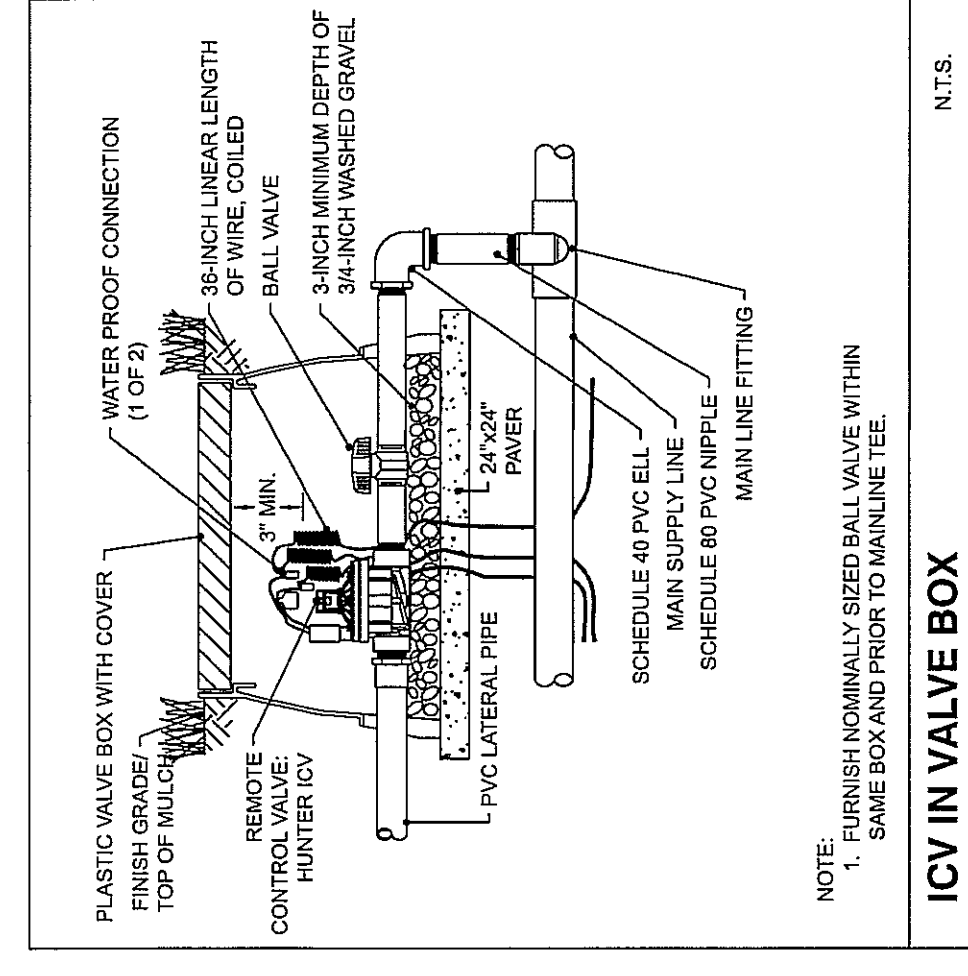
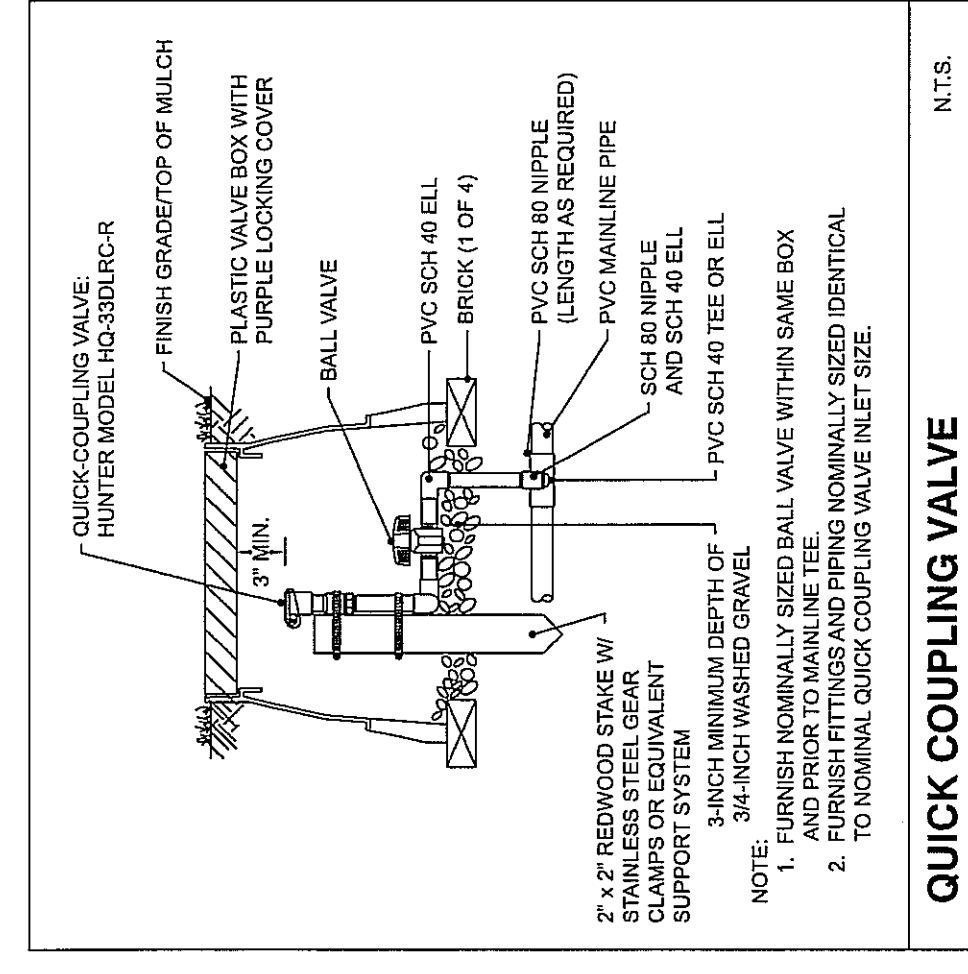
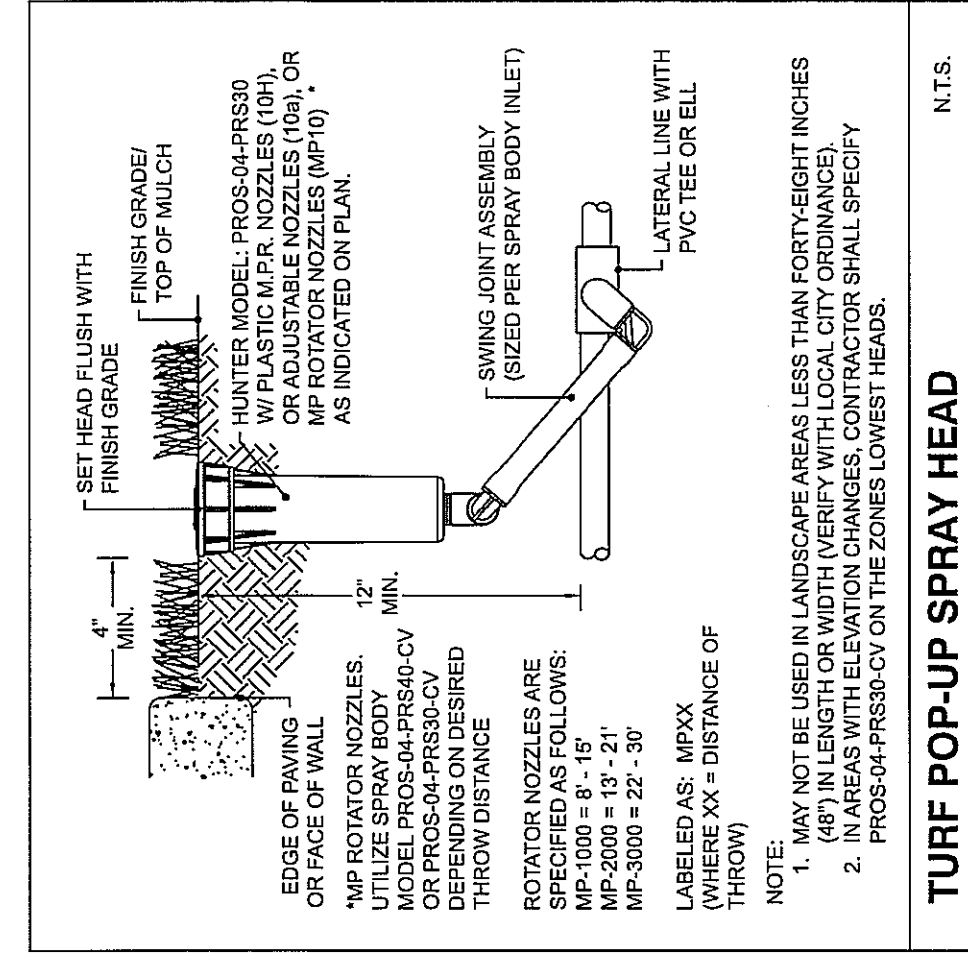
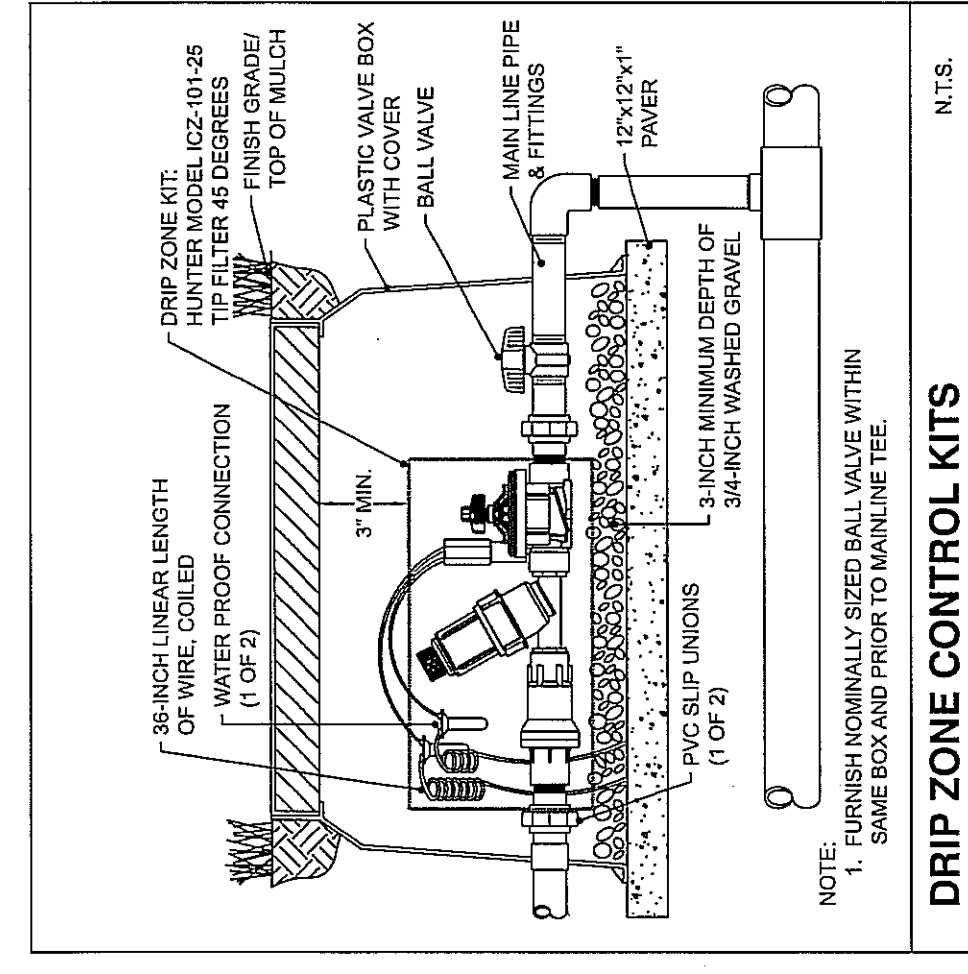
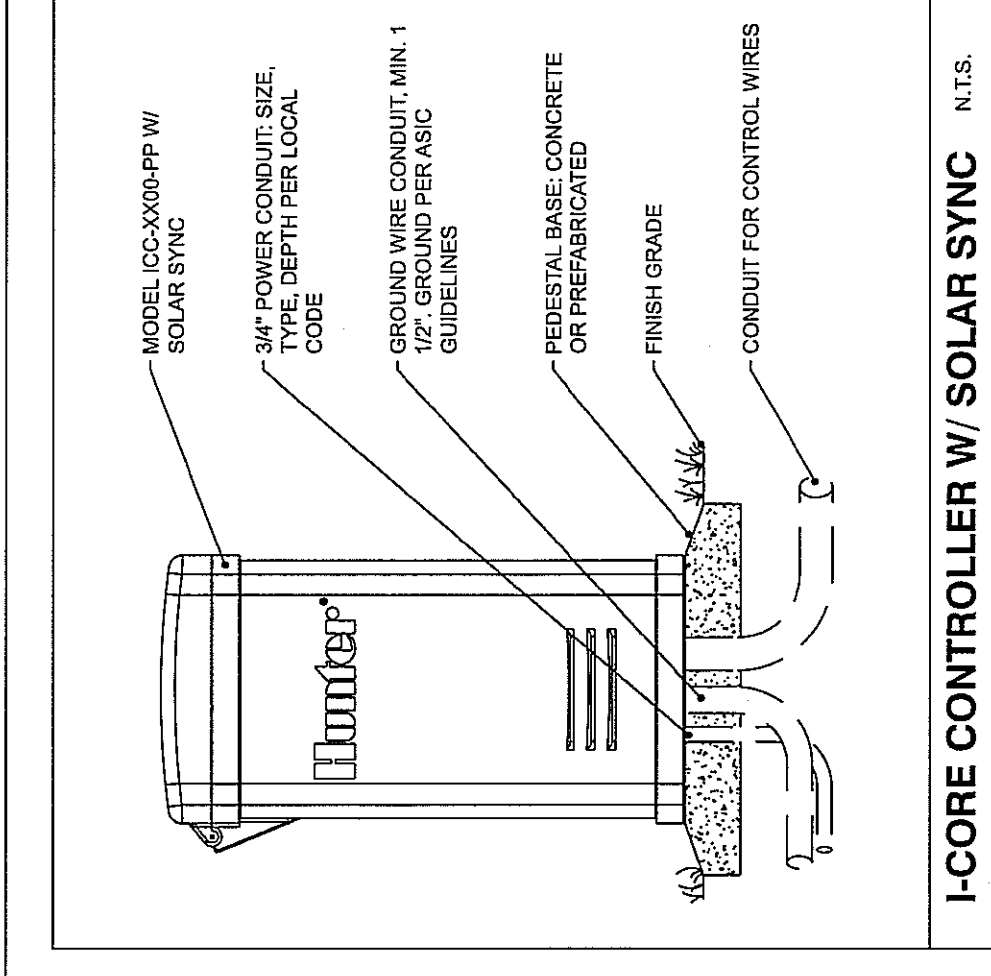
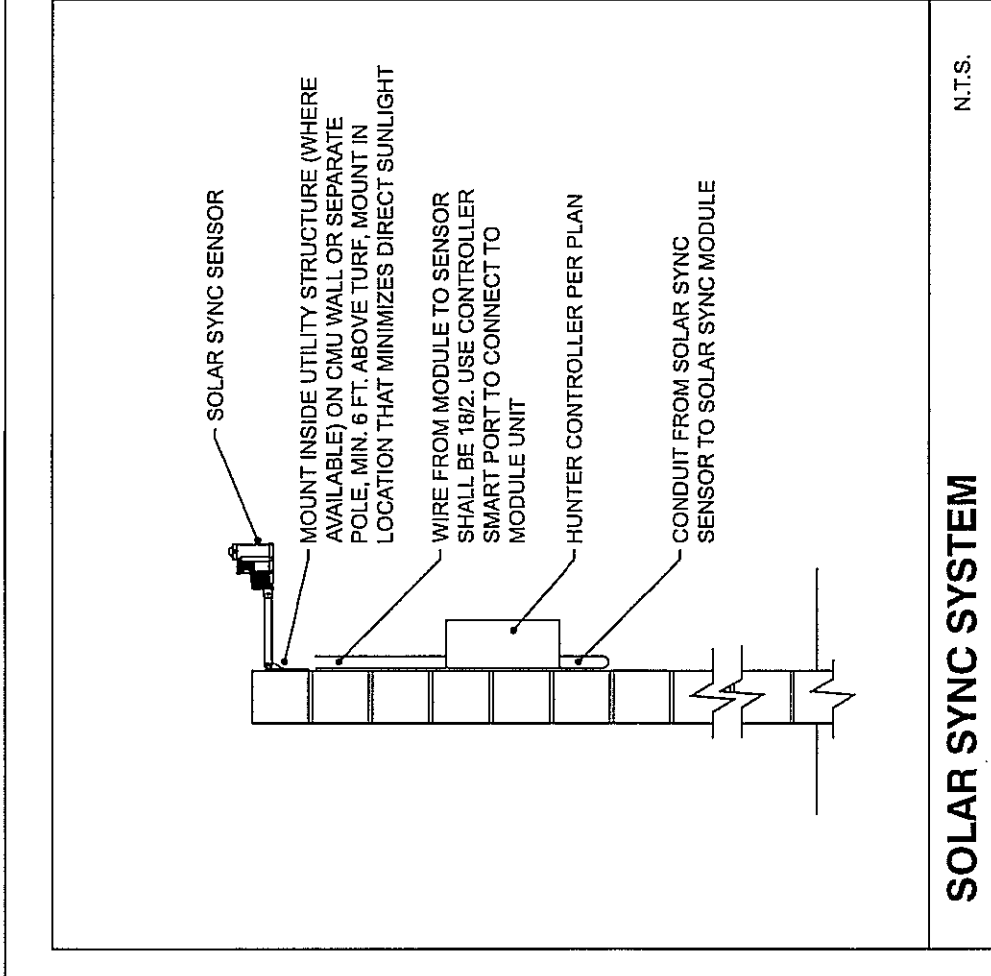
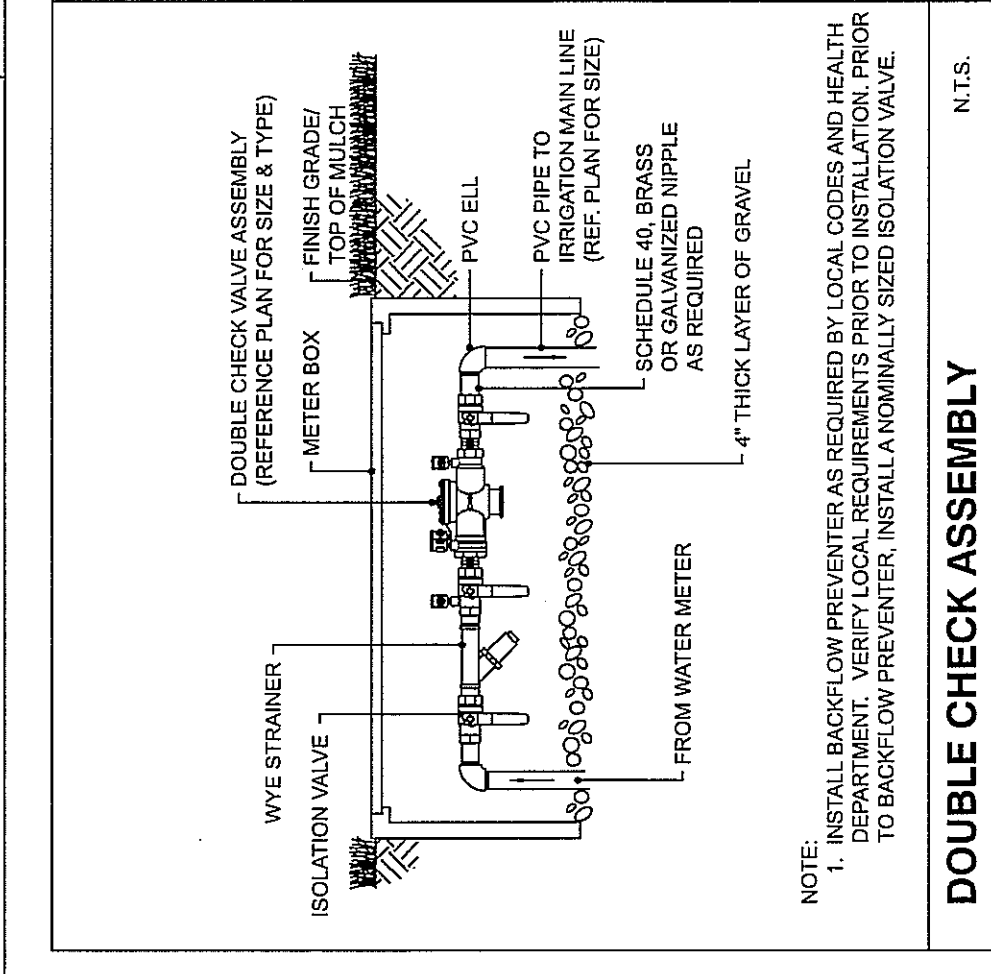
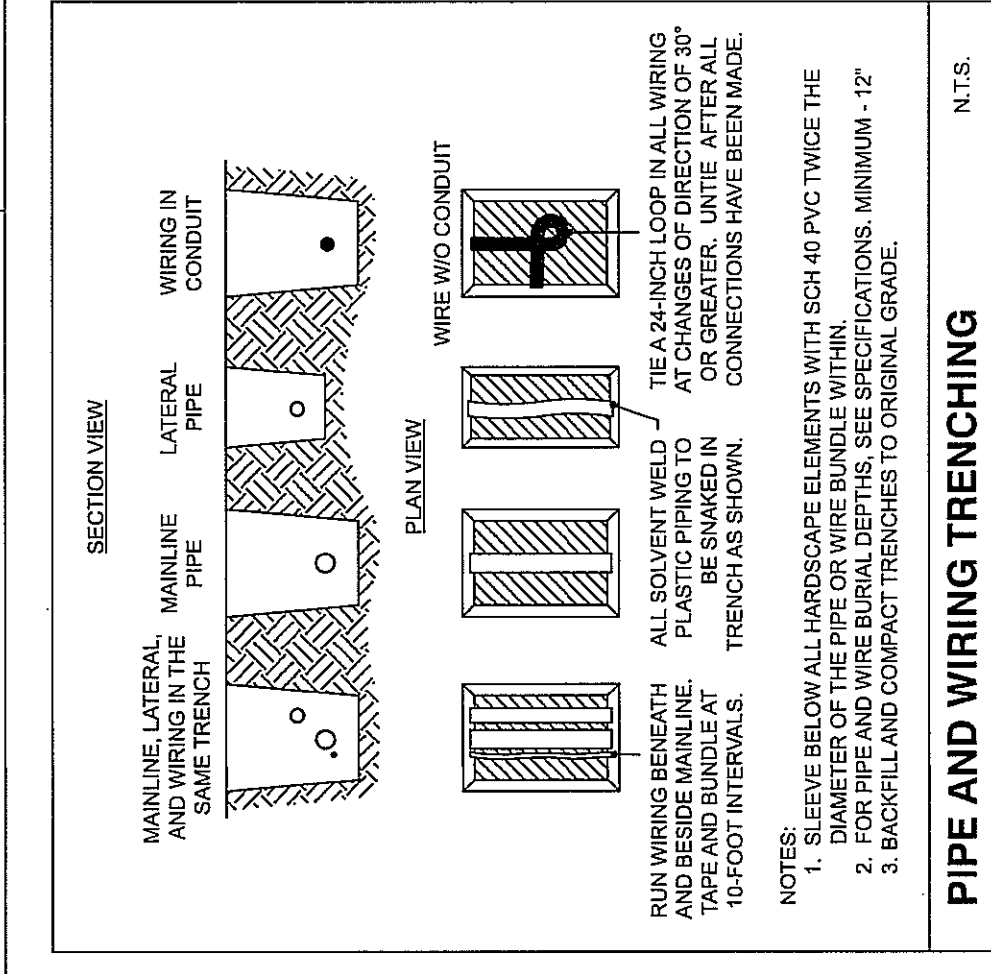
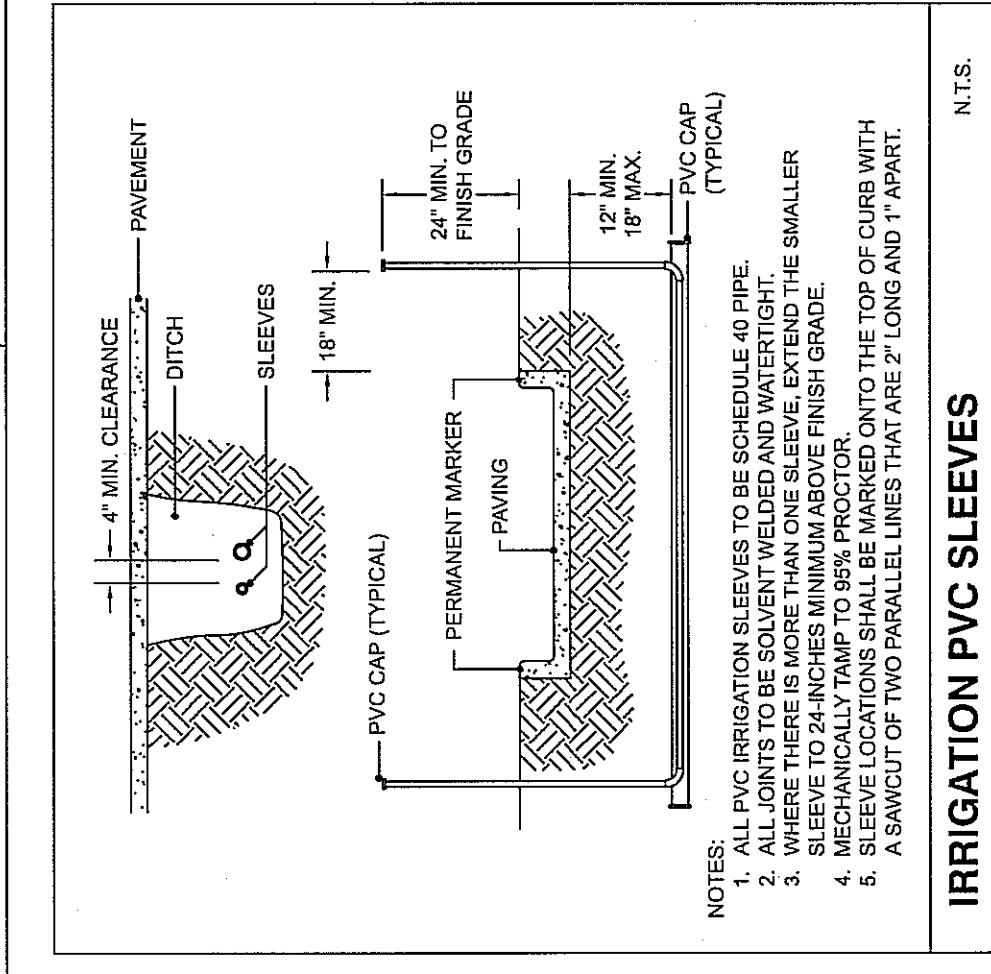
PIPE SIZE FLOW CHART

PIPE SIZE	FLOW RANGE
3/4"	1 - 4 GPM
1"	6 - 12 GPM
1 1/4"	12 - 22 GPM
1 1/2"	22 - 28 GPM
2"	28 - 46 GPM
2 1/2"	46 - 70 GPM
3"	70 - 100 GPM

VALUES ARE FOR UNIFORM FLOW. ALWAYS USE APPROXIMATE AND USE LOCAL EXPERIENCE. ALWAYS USE CURRENT CODES AND REGULATIONS ON PIPE SIZES AND FLOWS.



STA. 102+85 - SEE SHEET 1103



JIBURDI CONSULTANTS, LLC
 310 Longwing
 Conroe, TX 77384
 Tel: (281) 756-3011
 Fax: (281) 539-2240

THIS PROJECT & THE IDEAS
 HEREIN, AS AN INSTRUMENT
 OF SERVICE, ARE THE PROPERTY OF THE
 ARCHITECT & ARE NOT TO BE
 REPRODUCED OR TRANSMITTED IN ANY
 FORM OR BY ANY MEANS, WITHOUT THE
 AUTHORIZATION OF
 BURCH CONSULTANTS, LLC.
 COPYRIGHT © 2012

DEISON TECHNOLOGY PARK
 MONTGOMERY COUNTY, TEXAS
 IRRIGATION DETAILS
 DEISON PARK

ISSUE DATE:
 C

These plans have been reviewed for general
 compliance with the International Building Code
 and the International Mechanical Code. Any
 specific code requirements shall be verified
 with the local authority having jurisdiction.
 The reviewer does not assume any liability
 for any errors or omissions. The reviewer
 shall not be held responsible for any
 consequences arising from the use of these
 plans. The reviewer shall not be held
 responsible for any consequences arising
 from the use of these plans.
 JAN 2 2 2013
 Michael W. Johnson

1 INCH
 IF THIS LINE DOES NOT MEASURE ONE
 AND SHOULD NOT BE CALLED FOR
 DIMENSIONAL INFORMATION.

PROJECT NUMBER:
 09901004

ISSUE DATES:

DRAWN BY: DFZ, REM.
 CHECKED BY: MCL

SHEET NO.: 110

PROJECT FILE: P:\VME CABINET\A-FILE CABINETS & ASSOC\TECHNOLOGY PARK\DESIGN\DWG\DWG\FINAL\PRO.DWG
 DATE PLOTTED: Feb 07, 2012