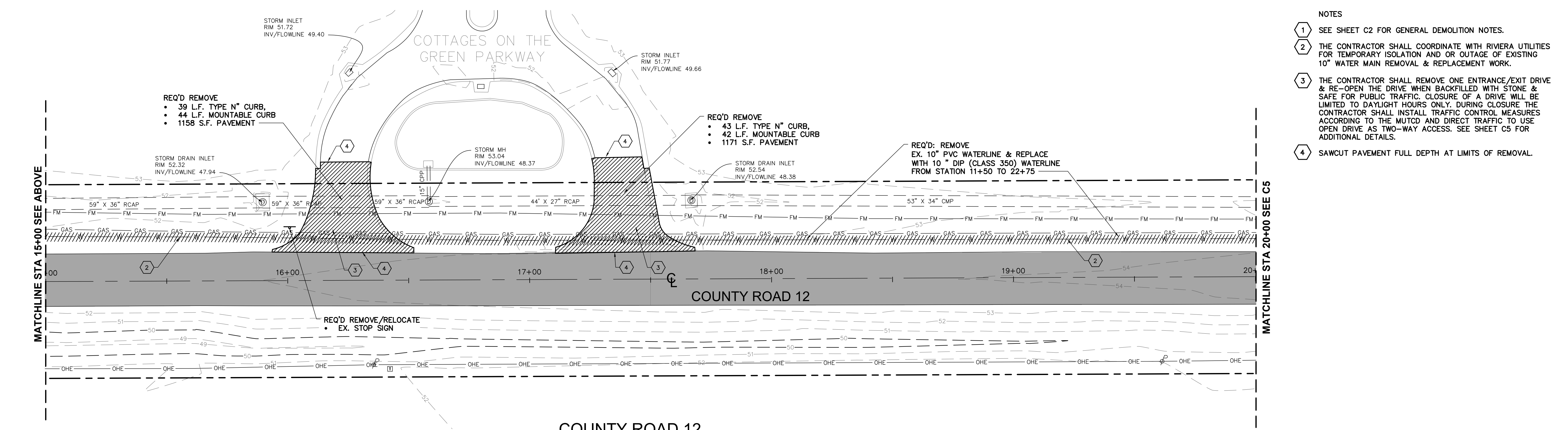
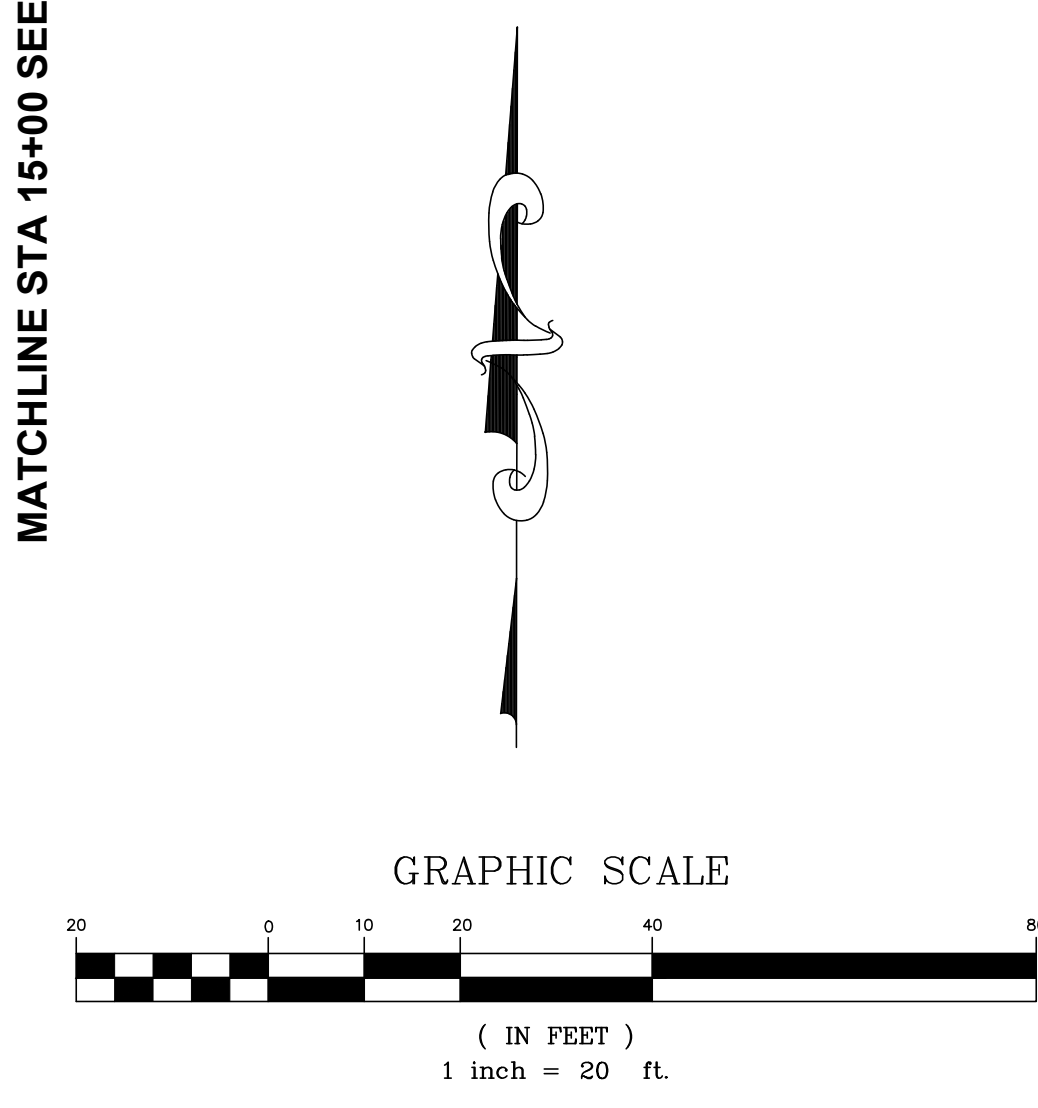


COUNTY ROAD 12
PLAN VIEW
STA. 10+00 TO STA. 15+00.00
SCALE: 1"=20'



COUNTY ROAD 12
PLAN VIEW
STA. 15+00.00 TO STA. 20+00.00
SCALE: 1"=20'

- NOTES
- 1 SEE SHEET C2 FOR GENERAL DEMOLITION NOTES.
 - 2 THE CONTRACTOR SHALL COORDINATE WITH RIVIERA UTILITIES FOR TEMPORARY ISOLATION AND OR OUTAGE OF EXISTING 10" WATER MAIN REMOVAL & REPLACEMENT WORK.
 - 3 THE CONTRACTOR SHALL REMOVE ONE ENTRANCE/EXIT DRIVE & RE-OPEN THE DRIVE WHEN BACKFILLED WITH STONE & SAFE FOR PUBLIC TRAFFIC. CLOSURE OF A DRIVE WILL BE LIMITED TO DAYLIGHT HOURS ONLY. DURING CLOSURE THE CONTRACTOR SHALL INSTALL TRAFFIC CONTROL MEASURES ACCORDING TO THE MUTCD AND DIRECT TRAFFIC TO USE OPEN DRIVE AS TWO-WAY ACCESS. SEE SHEET C5 FOR ADDITIONAL DETAILS.
 - 4 SAWCUT PAVEMENT FULL DEPTH AT LIMITS OF REMOVAL.

ISSUED FOR BID
REVISIONS: ADDENDUM # 2/24/2022-ADDED VALVES & FIRE HYDRANT TO PROP. WATERLINE

DATE: February 24, 2022

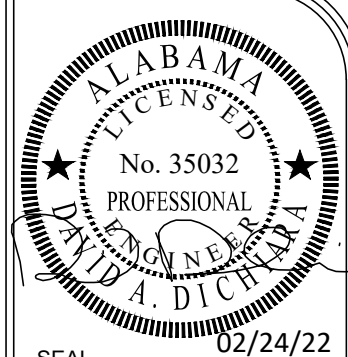
PROJECT LOCATION: CITY OF FOLEY COUNTY ROAD FOLEY, ALABAMA

SHEET TITLE: EXISTING CONDITION & DEMO PLAN

PROJECT: CITY OF FOLEY COUNTY ROAD 12 WIDENING

ENGINEERING DESIGN GROUP, LLC
PRELIMINARY
(205) 403-9158
www.edg-alabama.com

SHEET NO. **C4**



ISSUED FOR BID
 REVISIONS: Δ APPENDIX #1 2/24/2022-ADDED VALVES & FIRE HYDRANT TO PROP. WATERLINE

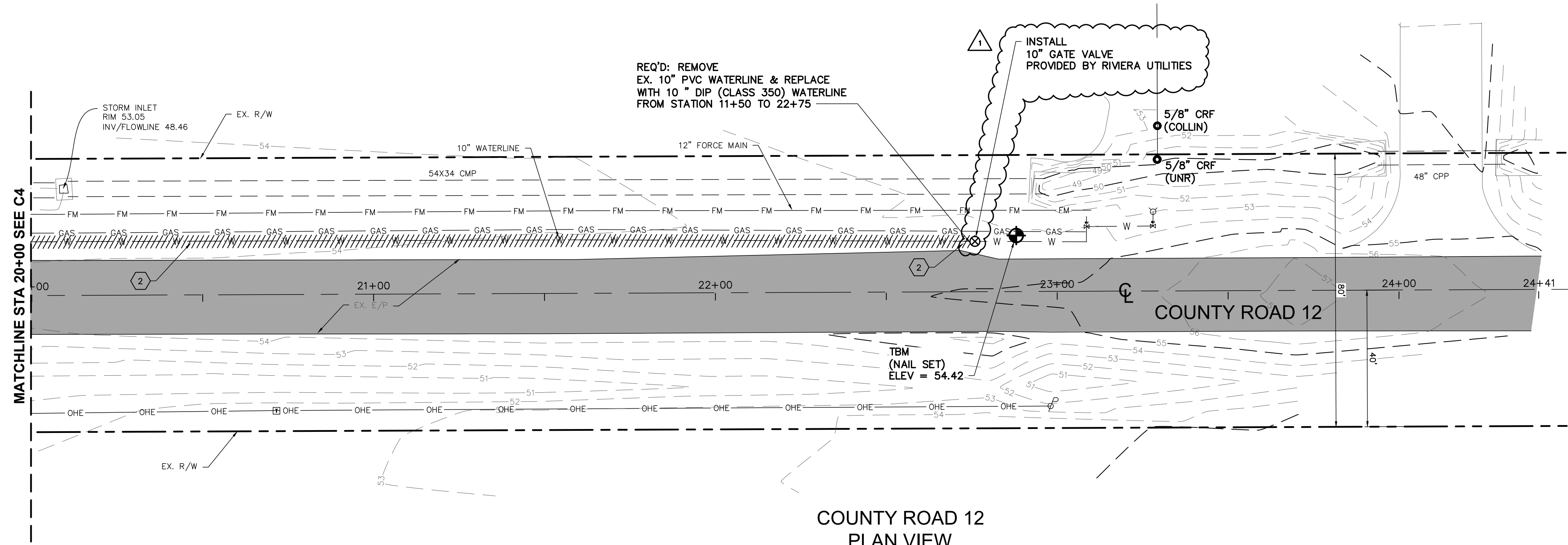
DRAWN BY: CAW
 CHECKED BY: DAD
 PROJECT NO.: F-FOLE0001
 CAD FILE: EX_COND.DWG
 DATE: February 24, 2022

PROJECT LOCATION:
 CITY OF FOLEY
 FOLEY, ALABAMA
 SHEET TITLE:
 EXISTING CONDITION & DEMO PLAN

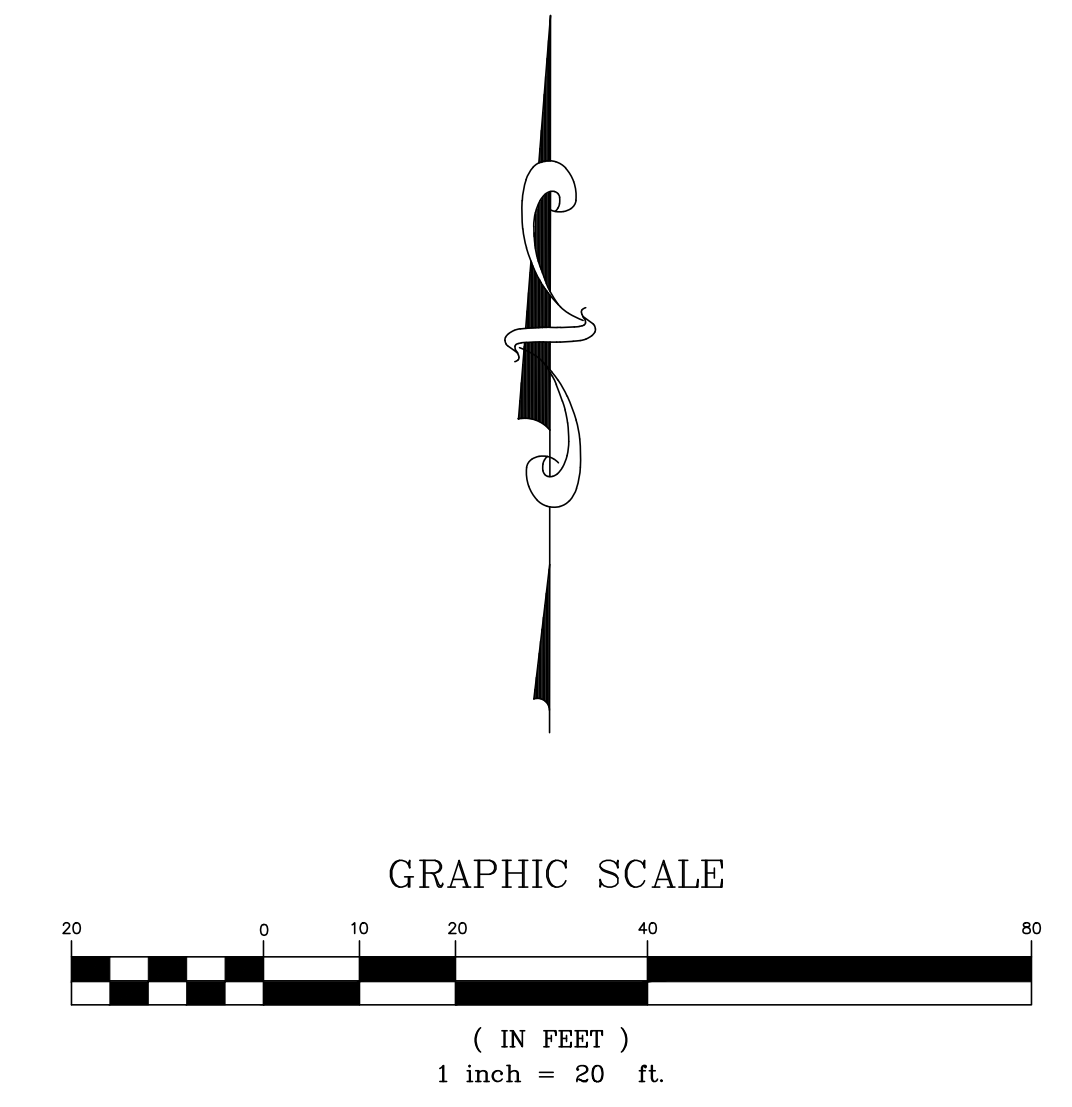
PROJECT:
 CITY OF FOLEY COUNTY ROAD
 12 WIDENING

LAND SURVEYING
EDG
 CIVIL ENGINEERING
 ENGINEERING DESIGN GROUP, LLC
 PELHAM FOLEY ALABAMA
 (205) 403-9158
 www.edgallabama.com

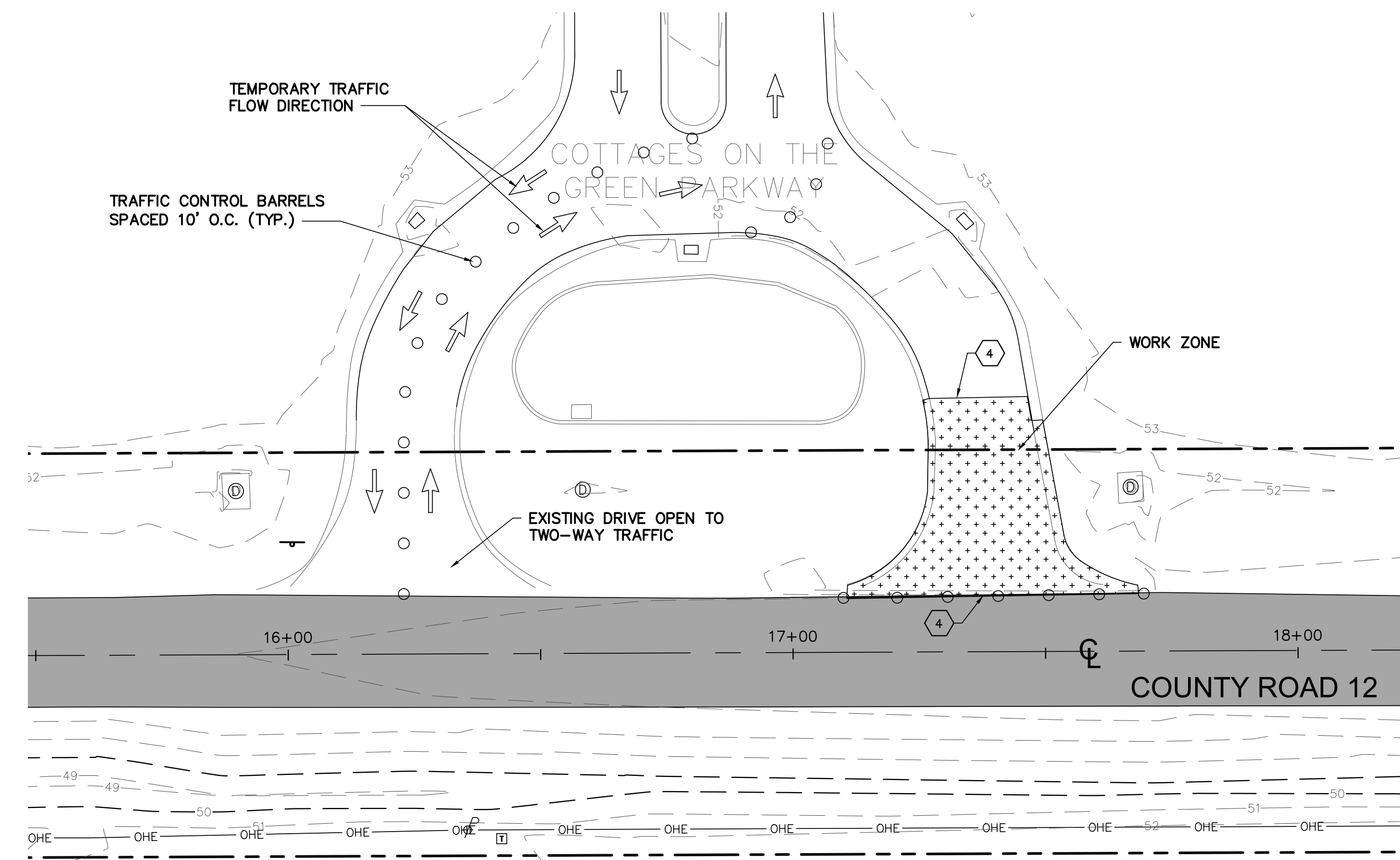
SHEET NO.
C5



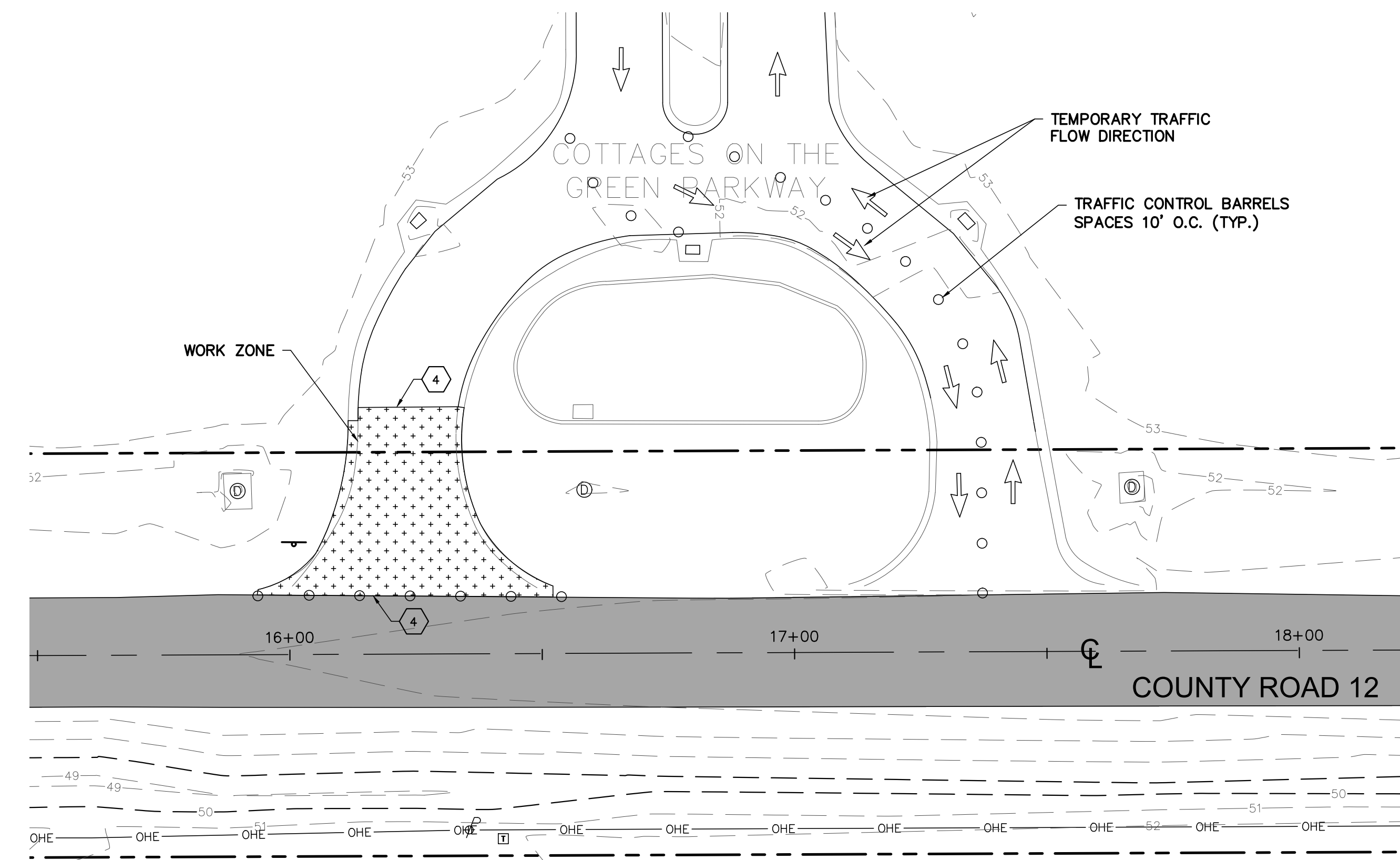
COUNTY ROAD 12
 PLAN VIEW
 STA. 20+00 TO STA. 22+71.30
 SCALE: 1"=20'



- NOTES
- 1 SEE SHEET C2 FOR GENERAL DEMOLITION NOTES.
 - 2 THE CONTRACTOR SHALL COORDINATE WITH RIVERA UTILITIES FOR TEMPORARY ISOLATION AND OR OUTAGE OF EXISTING 10" WATER MAIN REMOVAL & REPLACEMENT WORK.
 - 3 THE CONTRACTOR SHALL REMOVE ONE ENTRANCE/EXIT DRIVE & RE-OPEN THE DRIVE WHEN BACKFILLED WITH STONE & SAFE FOR PUBLIC TRAFFIC. CLOSURE OF A DRIVE WILL BE LIMITED TO DAYLIGHT HOURS ONLY. DURING CLOSURE THE CONTRACTOR SHALL INSTALL TRAFFIC CONTROL MEASURES ACCORDING TO THE MUTCD AND DIRECT TRAFFIC TO USE OPEN DRIVE AS TWO-WAY ACCESS.
 - 4 SAWCUT PAVEMENT FULL DEPTH AT LIMITS OF REMOVAL.



COTTAGES ON THE GREEN ENTRANCE / EXIT
 STAGE 1 DEMOLITION PLAN
 SCALE: 1"=20'



COTTAGES ON THE GREEN ENTRANCE / EXIT
 STAGE 2 DEMOLITION PLAN
 SCALE: 1"=20'