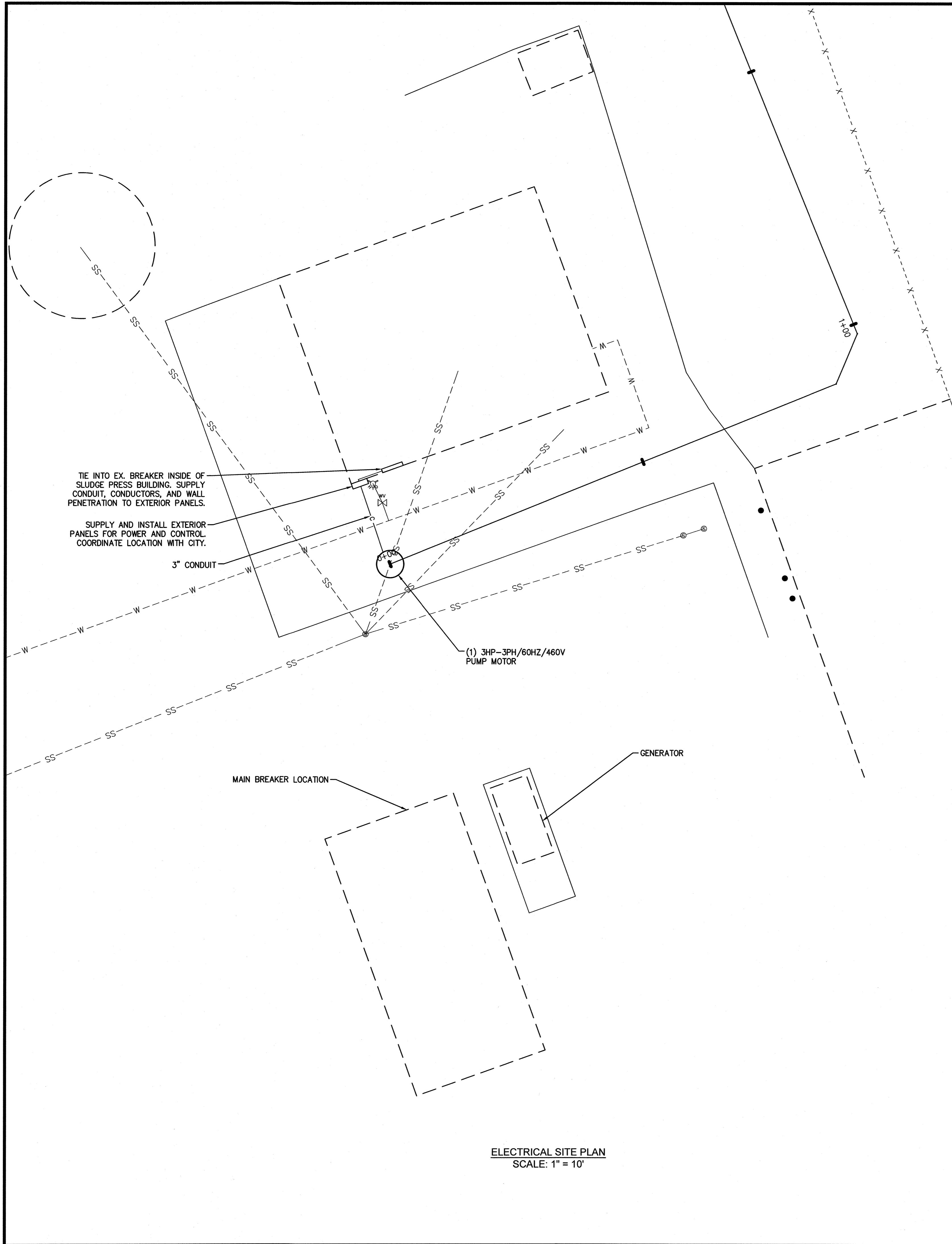
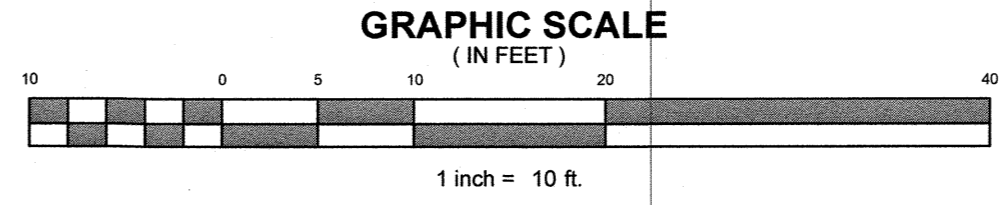
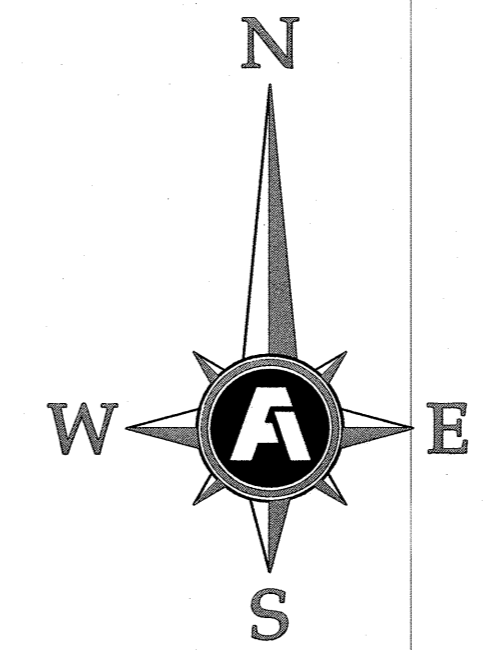


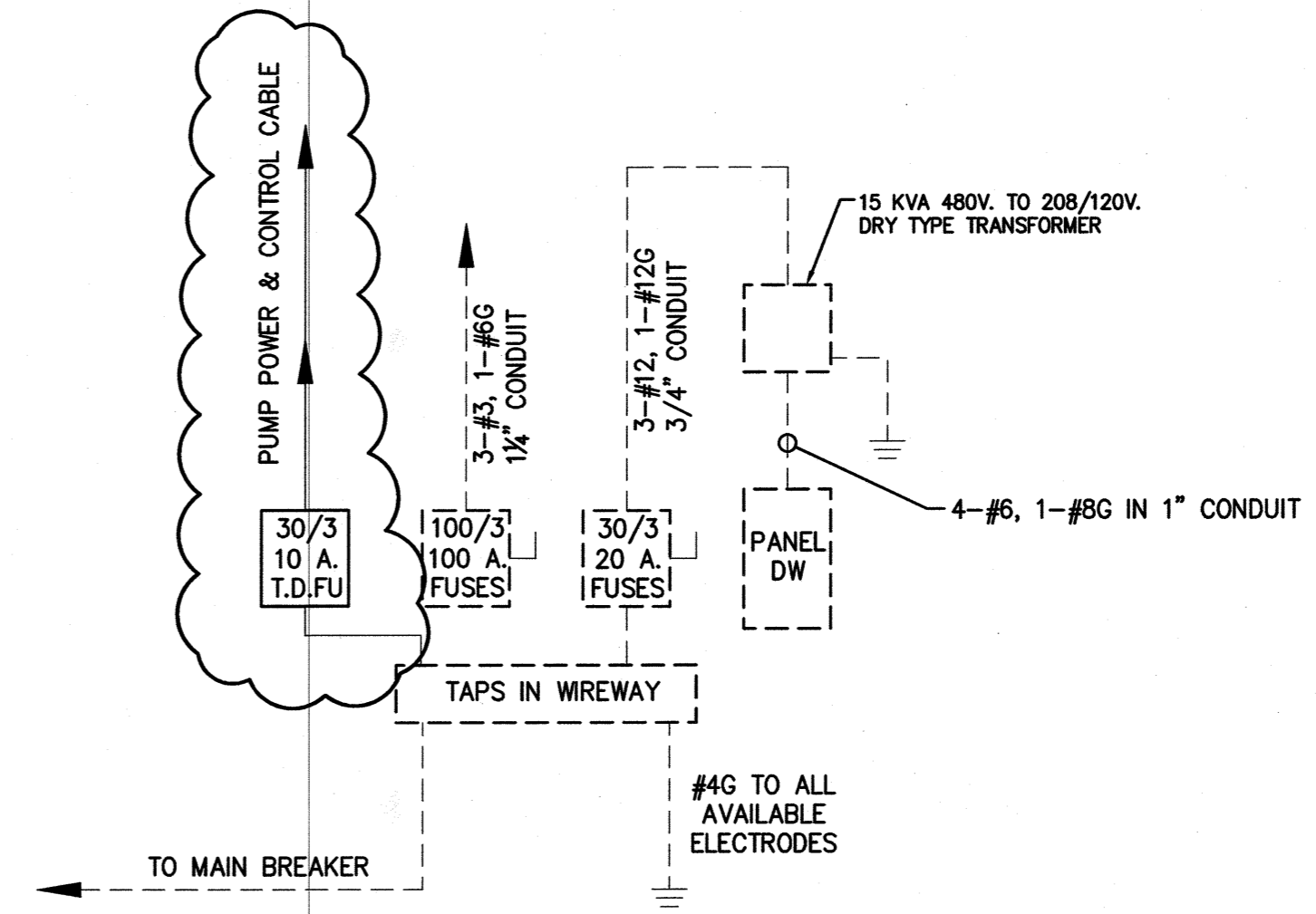
Copyright 2018 Fisher & Arnold, Inc., all rights reserved  
 Filename: W:\10272\CAD\Plans\Electrical Site Plan.dwg  
 Layout Name: ELECTRICAL SITE PLAN  
 Plot Date: Thursday, July 13, 2018 - 8:28 am  
 By: jtd



**ELECTRICAL SITE PLAN**  
 SCALE: 1" = 10'



- GENERAL CONSTRUCTION NOTES**
- CONTRACTOR SHALL COORDINATE THE EXACT LOCATION OF ALL UNDERGROUND CONDUITS AND DUCTBANKS TO AVOID INTERFERENCES WITH UNDERGROUND PIPING.
  - EQUIPMENT LOCATIONS AND PHYSICAL SIZES ARE SHOWN APPROXIMATELY. COORDINATE ACTUAL LOCATIONS WITH OTHER TRADES TO PROVIDE ACCESS AND WORKING SPACE/CLEARANCE PER NEC REQUIREMENTS.
  - RACEWAY ROUTING IS SHOWN IN SCHEMATIC FORM AND DOES NOT NECESSARILY REPRESENT PHYSICAL ROUTING. ACTUAL ROUTING SHALL BE DETERMINED BY CONTRACTOR TO AVOID BUILDING OBSTRUCTIONS AND INTERFERENCE WITH WORK OF OTHER TRADES.
  - ALL ELECTRICAL EQUIPMENT AND CABLES, CONDUIT, AND ACCESSORIES REQUIRED FOR THEIR INSTALLATION SHALL BE PROVIDED BY THE CONTRACTOR.
  - CONTRACTOR SHALL PROVIDE ALL SERVICES AND ACCESSORIES, INCLUDING FINAL CONNECTIONS TO ALL EQUIPMENT.
  - THE ELECTRICAL CONTRACTOR SHALL BE RESPONSIBLE FOR PROVIDING ALL CONTROL WIRING IN RACEWAY, TERMINATIONS, LABELING, AND TESTING OF CONTROL CABLING FOR COMPLETE OPERATIONAL CONTROL SYSTEM.
  - THE ELECTRICAL CONTRACTOR SHALL BE RESPONSIBLE FOR FURNISHING AND INSTALLING ELECTRICAL EQUIPMENT AND CONTROL PANELS AS REQUIRED FOR THE PROJECT UNLESS OTHERWISE NOTED.
  - ALL WORK SHALL BE INSTALLED PER SPECIFICATIONS AND LATEST EDITION OF THE NATIONAL ELECTRICAL CODE. THE CONTRACTOR SHALL COORDINATE WORK INSPECTIONS REQUIRED BY SPECIFICATIONS WITH THE UTILITY AND THE AUTHORITY HAVING JURISDICTION PRIOR TO COVERING INSTALLED WORK.
  - ALL CONDUIT SHALL BE 2" SCHEDULE 40 PVC UNLESS OTHERWISE NOTED.
  - ALL ENCLOSURES SHALL BE HINGED NEMA 3R OR BETTER. COLOR TO BE ANSI 61 GRAY.
  - ALL EQUIPMENT TO BE RATED FOR 600 VAC.



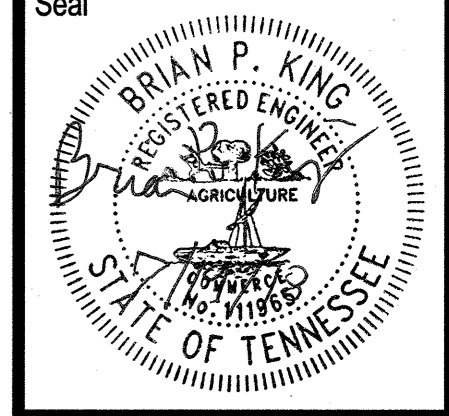
**ONE LINE DIAGRAM**  
 N.T.S

Load	Voltage 120/208			PANEL DW			Job Name: SCOTT'S CREEK WWTP				
	A	B	C	NO	BKR	A	B	C	Load		
LIGHTS	1000			20/1	1	A	2	20/1	360	RECEPTACLES	
LIGHTS		1060		20/1	3	B	4	20/1	360	RECEPTACLES	
UNIT HEATER			2500	30	5	C	6	20/1	800	EXH. FAN	
UNIT HEATER	2500			2	7	A	8	20/1	1000	SPARE	
PROVISION			2500	30	9	B	10	20/1		SPARE	
PROVISION				2	11	C	12	20/1	1000	SPARE	
PROVISION				13	A	14				PROVISION	
PROVISION				15	B	16				PROVISION	
PROVISION				17	A	18				PROVISION	
PROVISION				19	A	20				PROVISION	
PROVISION				21	B	22				PROVISION	
PROVISION				23	C	24				PROVISION	
PROVISION				25	A	26				PROVISION	
PROVISION				27	B	28				PROVISION	
PROVISION				29	C	30				PROVISION	
PROVISION				31	A	32				PROVISION	
PROVISION				33	B	34				PROVISION	
PROVISION				35	C	36				PROVISION	
PROVISION				37	A	38				PROVISION	
PROVISION				39	B	40				PROVISION	
PROVISION				41	C	42				PROVISION	
Totals	3500	3560	5000				1360	1360	1800	Totals	
Total Load		57 A									

**FISHER ARNOLD**  
 ENGINEERING INTEGRATION  
 9180 Crestawn Hills Drive | Memphis, Tennessee 38125-6538  
 901.748.1811 | Fax: 901.748.3115 | www.fisherarnold.com  
 © 2018 Fisher & Arnold, Inc. All rights reserved.

CITY OF LAKELAND  
**SCOTT'S CREEK WWTP**  
**DEWATERING EFFLUENT PUMP STA.**  
 LAKELAND, TENNESSEE

Rev.	Date	Revision Description



Issue Date: June 2, 2017  
 Project No: A10272  
 Drawn By: CCC  
 Checked By: JTV  
 Sheet Title: ELECTRICAL SITE PLAN  
 Sheet Number: E1.1