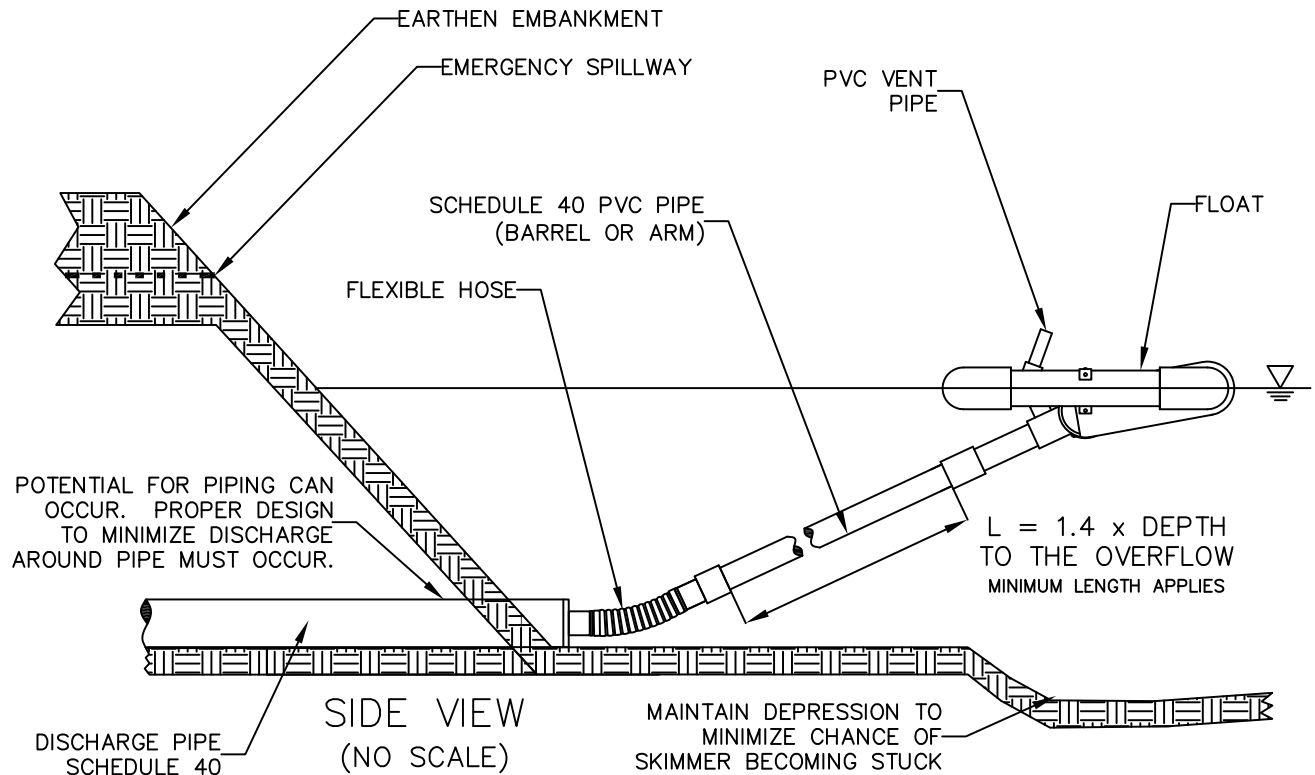


GENERAL NOTES:

1. FAIRCLOTH SKIMMER® FLOW RATES WERE USED AS THE BASIS OF DESIGN WHEN DETERMINING DRAINAGE CALCULATIONS. UTILIZING A PRODUCT FROM AN ALTERNATIVE MANUFACTURER WILL CREATE A SIGNIFICANT DEVIATION TO THE DESIGN AND MUST BE APPROVED AND RECALCULATED BY THE DESIGN ENGINEER.
2. PROPER DESIGN MUST BE COMPLETED TO MINIMIZE PIPING AROUND DISCHARGE PIPE.
3. PROPER ORIFICE OPENING MUST BE SELECTED TO ENSURE POND DRAINS IN CORRECT AMOUNT OF TIME. MODIFICATIONS MAY BE REQUIRED IF FIELD CONDITIONS WARRANT A CHANGE.
4. EMBANKMENT MUST BE COMPACTED TO DESIGN SPECIFICATIONS.
5. EMERGENCY SPILLWAY MUST BE CORRECTLY SIZED AND EROSION PROTECTION INSTALLED.
6. EROSION PROTECTION MUST BE INSTALLED ALONG THE EMBANKMENT AND AT THE DISCHARGE END OF THE PIPE.
7. INSPECT SYSTEM REGULARLY TO ENSURE IT IS FUNCTIONING IN A CORRECT MANNER.
8. EIGHT SIZES OF SKIMMERS ARE AVAILABLE, REFER TO THE FLOW SHEET, CUT SHEET, AND INSTRUCTIONS ON WEB SITE FOR EACH SIZE.
9. BARREL PIPE SHOULD BE 1.4 X DEPTH OF THE BASIN TO ENSURE PROPER FUNCTION.

| Basin | Skimmer Size | Orifice RAD | Orifice Dia. |
|--------|--------------|-------------|--------------|
| Pond 1 | 5" | 2 0" | 4 1/8" |



DRAWN BY T. R. EVANS 06/23

FAIRCLOTH SKIMMER® DISCHARGE SYSTEM WITH EMBANKMENT

FAIRCLOTH SKIMMER
 WWW.FAIRCLOTHSKIMMER.COM
 TELEPHONE: (919) 732-1244
 FAX: (919) 732-1266
 EMAIL: SALES@FAIRCLOTHSKIMMER.COM