

ADDENDUM 2

ADDENDUM DATE: July 11, 2023

PROJECT: Northwest Human Services Center
215 Balfour Drive
Archdale, NC 27263

OWNER: Randolph County
725 McDowell Road
Asheboro, NC 27205

ARCHITECT: Smith Sinnett Architecture, P.A.
4600 Lake Boone Trail, Suite 205
Raleigh, North Carolina 27607

BIDS DUE: **July 18, 2023 at 2:00pm**
Meeting Room A
725 McDowell Road
Asheboro, NC 27205

Please note, Project Documents, Addenda, and Contractors list are available at www.smithsinnett.com under the 'Documents' icon on the navigation bar.

Among other items, this Addendum addresses issues raised in the Pre-Bid Meeting held on June 28, 2023 at 10:00 a.m. Pre-Bid Agenda notes and Sign In sheet of those that attended are attached.

This Addendum shall be included in the contract for the above referenced project. All General, Supplementary and Special Conditions, etc., as originally specified or as modified below shall apply to these items.

ARCHITECTURAL – DRAWINGS

1. **REVISION:** A4-01: Accessory Schedule item TB4 description to read “4'-0” TACKBOARD” and manufacturer to read “FORBO”
2. **REISSUE:** 6/A4-10 revise casework in lactation room.
3. **REISSUE:** A6-01
4. **REISSUE:** A9-01 revise dimension. All new doors to follow typical placement per 8/A5-01.
5. **REISSUE:** A9-10 revise exterior signage elevation.

MECHANICAL

1. **REVISION:** M1-05 change ABANDON CONDENSING UNIT IN PLACE (ALTERNATE 1) to read ABANDON CONDENSING UNIT IN PLACE (ALTERNATE 2)

ELECTRICAL

1. **CLARIFICATION:** E1-01 note 15 – MC cable is not approved to be used.
2. See Substitution Request package attached.

End of Addendum 2

Attached:

Sheets A4-10, A6-01, A9-01, A9-10
Substitution request package

LCAT24

2' x 4' LED CONTEMPORARY ARCHITECTURAL TROFFER

FEATURES

- High efficiency acrylic center lens features linear prisms for high performance without pixelation
- Appropriate for offices, schools, medical, and public spaces
- High performance reflector with matte white paint standard
- LED modules and electrical accessible from below
- Optional architecturally styled integration of daylight and occupancy sensor(s)
- QR code traceability
- Compatible with Dual-Lite inverters



CONTROLS TECHNOLOGY



SPECIFICATIONS

CONSTRUCTION

- Luminaire housing, reflectors and end caps are die-formed code-gauge cold-rolled steel
- High transmission extruded acrylic enclosed lens features linear prisms with custom frost for high efficacy without pixelation
- All reflective surfaces are finished after fabrication with unique formula high-reflectivity matte white paint for soft, uniform indirect illumination

OPTICS

- Removable lens for easy access to LED module and electrical components

INSTALLATION

- An access plate is furnished with each luminaire for fast wiring access without the necessity to open the fixture or wireway
- Luminaire fits recessed exposed Grid ceilings (G); four integral NEC compliant T-bar clips are standard
- Can be placed in Slot Grid (SG) style ceiling with regress 3/8" above ceiling plane
- A Flange Kit (FK) accessory is available for recessed hard ceiling applications
- Surface Mount (SM) option allows placement below ceiling plane
- Cable Mount (CM) option allows suspension below ceiling plane

ELECTRICAL

- 60,000 hour LEDs at L80 for reduced maintenance

ELECTRICAL (CONTINUED)

- 83 CRI standard or optional 90 CRI for color sensitive applications

CONTROLS

- Optional SpectraSync™ offers two modes of Tunable White solutions and integrates seamlessly into a variety of control systems
- NX Distributed Intelligence™ provides options for standalone and networked integrated sensor with wired or wireless connectivity for NX system deployments

TECHNOLOGY

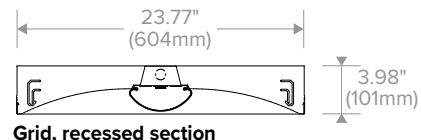
- SpectraSAFE™ is a scalable, cloud-enabled and lighting-based wireless video security solution for interior commercial and industrial applications

CERTIFICATIONS

- IC label is standard for recessed products. Note that IC label is void if product is installed on site with a combination of both battery pack plus through wiring or for air return fixtures
- All luminaires are built to UL1598 and 2108 standards, and bear appropriate cCSAus labels
- CSA certified to UL 924 standards with battery pack or DTS (Dimming Bypass Module) options
- Damp Location label standard
- Adheres to LM79, LM80, and TM21 industry standards

RELATED PRODUCTS

- [LCAT12](#)
 [LCAT14](#)
 [LCAT22](#)



DATE: _____ LOCATION: _____
 TYPE: _____ PROJECT: _____
 CATALOG #: _____

No exceptions taken to these substitute fixtures.
 Match original design details as closely as possible.
 Dan Campbell 7/7/23



CERTIFICATIONS (CONTINUED)

- DLC® (DesignLights Consortium) Qualified, with some Premium Qualified configurations. Please refer to the DLC website for specific product qualifications at www.designlights.org
- NX is available in U.S., Canada and Mexico. For other locations consult factory
- The DTS, Dimming Bypass Module, is for emergency circuit control loads including sensors and wireless systems CSA certified to UL 924. See page 8 for wiring diagram. [Link to Dimming Bypass Module Specification sheet](#)
- This product qualifies as a "designated country construction material" per FAR 52.225-11 Buy American-Construction Materials under Trade Agreements effective 04/03/2020. [See Buy American Solutions](#)

WARRANTY

- 5 year warranty
- See [HLI Standard Warranty](#) for additional information

KEY DATA	
Lumen Range	2350–8367
Wattage Range	18–63
Efficacy Range (LPW)	119–146
Reported Life (Hours)	L80/60,000

LCAT24

2' x 4' LED CONTEMPORARY ARCHITECTURAL TROFFER

DATE: _____ LOCATION: _____

TYPE: _____ PROJECT: _____

CATALOG #: _____

ORDERING GUIDE

Example: LCAT24-35MLG-ESDU

CATALOG #

LCAT24												
Model	CRI	Color Temp		Delivered Lumens		Ceiling Type		Shielding	Air Function	Driver		
LCAT24 2' x 4' LED Contemporary Architectural Troffer	Blank	>80	30	3000K	XW	2350-2560	G	Grid Lay-in ²	Blank	Static	E	Fixed Output
	9	>90	35	3500K	VW	2953-3339	SM	Surface Mount ^{3,11}	Curve	Air Return Side Slots	ED	0-10V Dimming ⁵
			40	4000K	MW	3205-3626			R	Rectangular	ED1	0-10V 1% Dimming
			50	5000K	LW	4041-4617	CM	Cable Suspended Mount ^{3,4}			EDD	0-10V Dim-to-Dark
			2750T	2700K-5000K	ML	4448-5026					ESD	Step Dimming ^{6,7,13}
			2765T	2700K-6500K	HL	5065-5786					LUTH	Hi-lume 1% EcoSystem LED driver with Soft-on, Fade-to-Black dimming technology ^{6,7,13}
				VL	6542-7440					DALIP	DALI Power Bus ^{7,13,16}	
				XL	7517-8367							

Voltage	Options	Control Options
U 120-277V 347 347V ¹⁴	ELL14 Emergency Battery Pack Installed, 1400 Lumens ^{7,8} ELL14ST Emergency Battery Pack, 1400 Lumens, Self Test ^{7,8} ELL14H2 Emergency Battery Pack, 2-Hour Run Time ^{7,8,9} DTS Dimming Bypass Module ^{7,10} C388 3-wire Flex ¹⁵ C488 4-wire Flex ¹⁵ C588 5-wire Flex ¹⁵ GLR Fast Blow Fuse EOR End of Row (SM and CM only. Provides end wiring access for continuous row mounting.) ³ INT Intermediate (SM and CM only. Provides ends with wiring access for continuous row mounting.) ³ CP Chicago Plenum SAF SpectraSAFE™ Integrated Surveillance Lighting System ¹¹	<u>NX Standalone</u> NXS NX, PIR BT Occupancy/Daylight Sensor, Slide Mount ^{13,14} <u>NX Networked – Wired</u> NXE NX, Dual SmartPORTs ^{14,15} NXES NX, PIR BT Occupancy/Daylight Sensor, Slide Mount, Dual SmartPORTs ^{13,14} <u>NX Networked – Wireless</u> NXSW NX Wireless, PIR BT Occupancy/Daylight Sensor ^{12,13,14} NXWE NX Wireless Enabled ^{12,13,14} <u>NX Networked – Wired/Wireless Hybrid</u> NXSWD NX Wireless, PIR BT Occupancy/Daylight Sensor, Dual SmartPORTs ^{13,14} NXWD NX Wireless, Dual SmartPORTs ^{13,14} <u>Third-Party Control Options</u> ODPG Occupancy and Daylight Sensors w/ Grouping, Philips SNS200 ^{7,16,18} LVR Lutron Vive Integral Fixture Control DFCSJ-OEM-RF (RF only) ^{7,16,17,18} LVS Lutron Vive Integral Fixture Control DFCSJ-OEM-OCC (RF with daylight and occupancy sensing) ^{7,16,17,18}

Accessories

- FK24** 2' x 4' Single Flange Kit (Shipped separately)
- CM48Y2SC3F-KIT** 48" Cable Mount Kit for 2' wide Cable Mount fixtures, 3-wire

Notes:

- 1 Available with ED driver and 80 CRI only. Not available with VL or XL lumen outputs
- 2 For drywall, order G with Flange Kit Accessory
- 3 Not available with Air Return (A) air function
- 4 Order hanger accessories separately
- 5 1V minimum low-end trim recommended when paired with a 0-10V dimmer
- 6 Limitations apply based on lumen packages (see [Product Exceptions & Details](#))
- 7 Not available in 347V
- 8 For compatibility with Dual-Lite LiteGear® inverters, contact Hubbell Lighting Representative
- 9 Not available for use in Canada
- 10 For emergency circuit control loads including sensors and wireless systems CSA certified to UL 924. Only available with 0-10V drivers. Universal voltage only. See page 8 for wiring diagram

- 11 SpectraSync+NX+SAF can not be configured. Only available with NXE, NXWE or NXWD. Not available in 347V

NX In-Fixture Control Options:

- 12 NXSW, NXWE, NXSWD and NXWD cannot be used with surface mount versions
- 13 NX is not available with ESD, LUTH, or DALIP driver options
- 14 NX combined with Spectrasync is not available in 347V
- 15 For NX control and Flex Wire together, consult factory

Third-Party Control Options:

- 16 LVS, LVR and ODPG only available with DALIP driver option
- 17 VIVE is a trademark of Lutron Electronics Co., Inc
- 18 Not available with SpectraSync (2750T or 2765T)

For questions about configuration options, contact Hubbell Representative

DATE: _____ LOCATION: _____
 TYPE: _____ PROJECT: _____
 CATALOG #: _____

PRODUCT EXCEPTIONS & DETAILS

Driver options listed below are available for the outputs as shown.

DRIVER AVAILABILITY TABLE								
	XW	VW	MW	LW	ML	HL	VL	XL
E	X	X	X	X	X	X	X	X
ED	X	X	X	X	X	X	X	X
ED1	X	X	X	X	X	X	X	X
EDD		X	X	X	X	X		
ESD				X	X	X	X	X
LUTH	X	X	X	X	X	X		
DALIP		X	X	X	X	X	X	X
347	X	X	X	X	X	X		X

CONTROLS

NX Distributed Intelligence™ Lighting Controls:

Supports both indoor and outdoor applications in a variety of deployment options- wired, wireless, hybrid. Integrates with and enables a wide array of luminaires including those with SpectraSync™ Color Tuning Technology.



NX INTEGRATED CONTROLS REFERENCE								
NX Option	Sensor	Networkable	Scheduling	Occupancy	Daylight Harvesting	0-10V Dimming	On/off Control	Bluetooth® App Programming
NX Standalone								
NXS	NXSMP-SMI	No	Yes	Yes	Yes	Yes	Yes	Yes
NX Networked – Wired								
NXE	N/A	Yes	Yes	No	No	Yes	Yes	Requires NXBTC/R ¹
NXES	NXSMP-SMI	Yes	Yes	Yes	Yes	Yes	Yes	Yes
NX Networked – Wireless								
NXSW	NXSMP-SMI	Yes	Yes	Yes	Yes	Yes	Yes	Yes
NXWE	N/A	Yes	Yes	No	No	Yes	Yes	No ²
NX Networked – Wired/Wireless								
NXSWD	NXSMP-SMI	Yes	Yes	Yes	Yes	Yes	Yes	Yes
NXWD	N/A	Yes	Yes	No	No	Yes	Yes	Requires NXBTC/R ^{1,2}

1 NXBTC/R needs to be plugged into an available NX SmartPORT™ on the fixture network
 2 To program NXWE option, need to consult factory. If connected to an area controller, programming can be done from that

Philips EasySense Controls ODPG Sensor:



- Occupancy sensing, daylight harvesting, task tuning and grouping in one device
- Standalone control or grouping to wireless switches¹
- Uses Philips field apps for on site commissioning^{2,3}
- Ability to create scenes for various room configurations
- Cost-effective solution for energy-savings and code-compliance strategies
- DLC® Qualified: Listed on the QPL for Networked Lighting Controls. Please refer to the DLC website for specific product qualifications at www.designlights.org

1 Wireless switches only compatible with ODPG Philips EasySense
 2 [See link to Philips commissioning](#)
 3 Requires android device or IR dongle. See links for [phone compatibility](#) and [IR dongle](#)

Wireless Switch Accessories¹

- [PESR-WH](#) EasySense compatible wireless single rocker switch, white
- [PEDR-WH](#) EasySense compatible wireless dual rocker switch, white



CONTROLS (CONTINUED)

SpectraSAFE™ Integrated Surveillance Lighting System

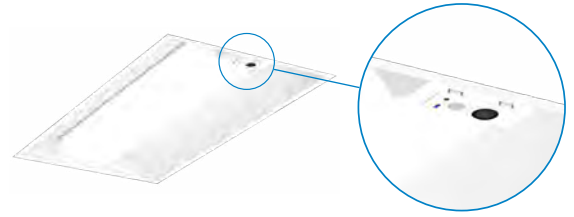


Technical Features

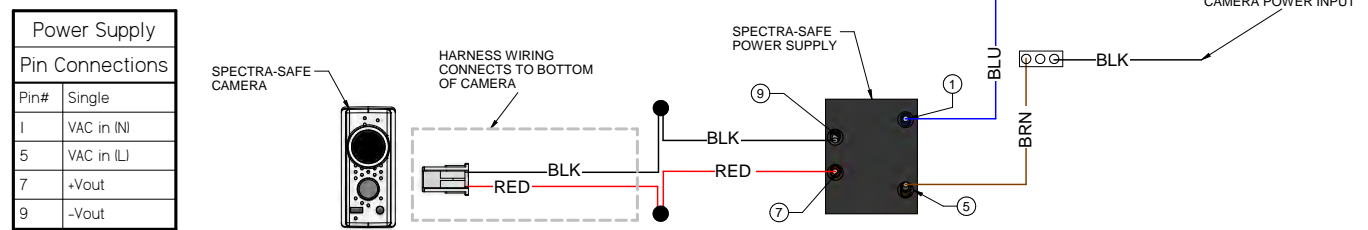
- High resolution 1080p full HD camera
- 2.8mm lens / 140° field of view
- IR emitter for low / no-light conditions
- [Multiple wiring configurations available](#)
- Supports 2-way audio communication
- Supports 2.4GHz WPA-PSK/WPA2-PSK Wi-Fi
- Data encrypted using AES 256 standard
- Low power consumption (2-5W)
- Transmissions secured using Open TLS / SSL

Software & Support

- Free Android, iOS and web-based app
- Versatile and supports multiple applications
- Multi-tenant web-based camera application
- Phone and in-app chat technical support
- Scalable cloud services and video storage
- Supported by a 5-year warranty



SPECTRASAFE WIRING DIAGRAM



SpectraSync™ Color Tuning Technology:

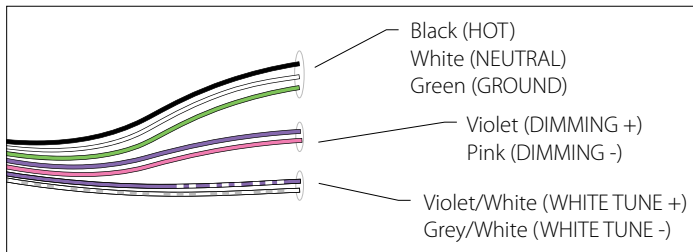
Control your space based on the needs of the application, specific activities throughout the day and preferences of the occupants with distinct SpectraSync™ Color Tuning Technologies.



SPECTRASync COLOR TUNING TECHNOLOGY		
Mode	Kelvin Range	Description
Tunable White	2700K–5000K 2700K–6500K	Offers users the ability to tailor CCT to their personal preference, enhancing task visibility, material and colors or the aesthetics of the space

SpectraSync Tunable White

Available in two options: 2750T (2700K–5000K) or 2765T (2700K–6500K). Requires two 0–10V controllers, one for intensity and one for CCT. Minimum 5% dimming.

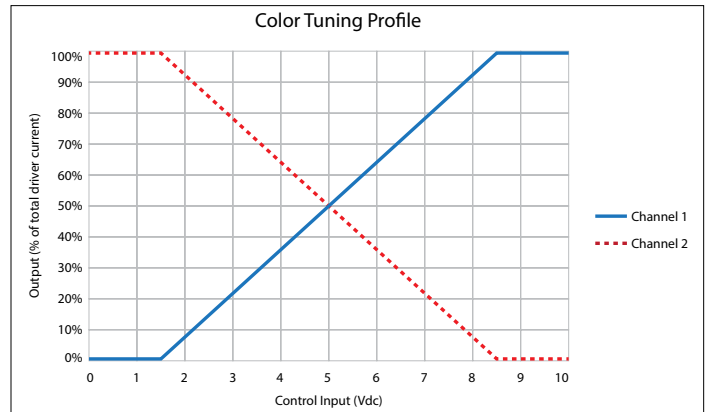


SpectraSync Tunable White luminaires are provided with two 0–10V circuits. The violet and pink circuit is for wiring to any qualified 0–10V controller for dimming. The violet/white and grey/white circuit is for wiring to any qualified 0–10V controller for Tunable White CCT control.

Controller Manufacturer Data

SpectraSync Tunable White was designed to be used with sinking style dimmers (provided by others) and is compatible with:

- Hubbell Control Solutions (HCS): NX Distributed Intelligence™ Room Controllers (NXRC) and In-fixture Controllers (NXFM)
- Lutron: DDTV, DVSTV, and NFTV dimmers
- Wattstopper: ADF120277 and CD4BL (Titan) dimmers



To enable scheduling and for use with NX wall control preset stations please refer to Hubbell Control Solutions NX SpectraSync technical sheet.

LCAT24

2' x 4' LED CONTEMPORARY ARCHITECTURAL TROFFER

DELIVERED LUMENS, SPECTRASync™



Shielding	Lumen Output	Watts	2700		3000		3500		4000		5000		6500	
			Lumens	LPW	Lumens	LPW	Lumens	LPW	Lumens	LPW	Lumens	LPW	Lumens	LPW
Curve	XW	19	2240	117	2341	123	2383	125	2414	126	2493	131	2456	129
	VW	28	2990	108	3124	113	3180	115	3221	117	3327	121	3277	119
	MW	30	3218	107	3363	111	3424	113	3467	115	3582	119	3528	117
	LW	36	4084	113	4268	118	4345	120	4400	122	4545	126	4477	124
	ML	39	4566	118	4771	123	4857	125	4919	127	5081	131	5005	129
	HL	44	5209	118	5443	124	5541	126	5612	128	5797	132	5710	130
Rectangle	XW	20	2489	123	2601	128	2648	130	2682	132	2770	136	2728	134
	VW	28	3085	109	3224	114	3282	116	3324	118	3434	122	3382	120
	MW	30	3323	110	3472	115	3534	117	3580	119	3698	122	3642	121
	LW	36	4230	117	4420	122	4500	125	4557	126	4707	130	4637	128
	ML	39	4711	121	4923	127	5012	129	5076	131	5243	135	5164	133
	HL	43	5295	123	5533	128	5633	131	5705	132	5893	137	5804	135

DELIVERED LUMENS [\(View 90 CRI data on supplemental document\)](#)

Product Availability 80 CRI					
Lumen Package	Shielding	Color	Lumens	Input Watts	LPW
XW		3000K	2448	18.7	131
		3500K	2532	18.7	135
		4000K	2560	18.7	137
		5000K	2560	18.7	137
	R	3000K	2350	18.6	126
		3500K	2532	18.7	135
		4000K	2560	18.7	137
		5000K	2560	18.7	137
VW		3000K	3112	24.3	128
		3500K	3303	24.3	136
		4000K	3339	24.3	138
		5000K	3339	24.3	138
	R	3000K	2953	24.3	122
		3500K	3135	24.3	129
		4000K	3169	24.3	130
		5000K	3169	24.3	130
MW		3000K	3379	26.4	128
		3500K	3587	26.4	136
		4000K	3626	26.4	137
		5000K	3626	26.4	137
	R	3000K	3205	26.5	121
		3500K	3402	26.5	128
		4000K	3439	26.5	130
		5000K	3439	26.5	130
LW		3000K	4302	32.1	134
		3500K	4567	32.1	142
		4000K	4617	32.1	144
		5000K	4617	32.1	144
	R	3000K	4041	32.2	125
		3500K	4290	32.2	133
		4000K	4337	32.2	135
		5000K	4337	32.2	135

Product Availability 80 CRI (continued)					
Lumen Package	Shielding	Color	Lumens	Input Watts	LPW
ML		3000K	4683	36.0	130
		3500K	4971	36.0	138
		4000K	5026	36.0	140
		5000K	5026	36.0	140
	R	3000K	4448	36.1	123
		3500K	4722	36.1	131
		4000K	4774	36.1	132
		5000K	4774	36.1	132
HL		3000K	5391	39.7	136
		3500K	5723	39.7	144
		4000K	5786	39.7	146
		5000K	5786	39.7	146
	R	3000K	5065	39.8	127
		3500K	5377	39.8	135
		4000K	5436	39.8	137
		5000K	5436	39.8	137
VL		3000K	6933	52.9	131
		3500K	7358	52.9	139
		4000K	7440	52.9	141
		5000K	7440	52.9	141
	R	3000K	6542	53.1	123
		3500K	6942	53.1	131
		4000K	7019	53.1	132
		5000K	7019	53.1	132
XL		3000K	7798	63.0	124
		3500K	8273	63.0	131
		4000K	8367	63.0	133
		5000K	8367	63.0	133
	R	3000K	7517	63.0	119
		3500K	7894	62.9	126
		4000K	7894	62.9	126
		5000K	7517	62.9	120

LCAT24

2' x 4' LED CONTEMPORARY ARCHITECTURAL TROFFER

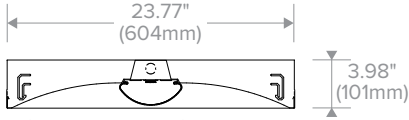
DATE: _____ LOCATION: _____

TYPE: _____ PROJECT: _____

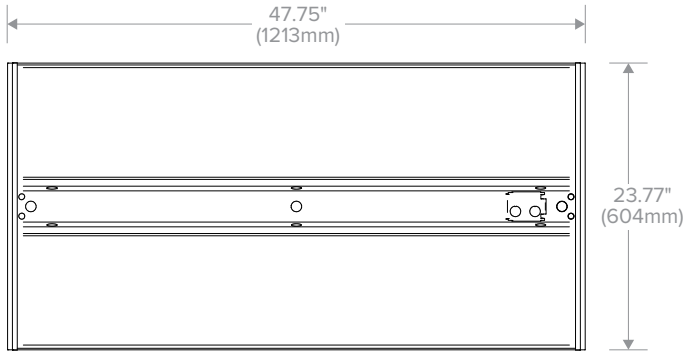
CATALOG #: _____

DIMENSIONS

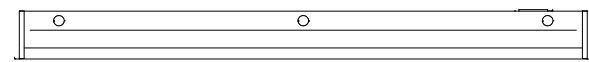
GRID



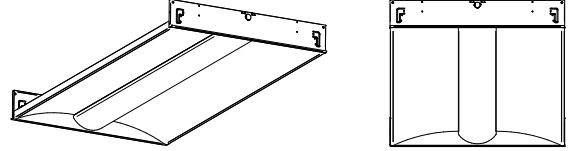
Grid, recessed section



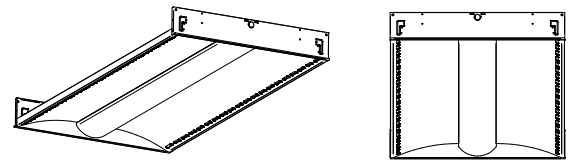
Grid, back of housing



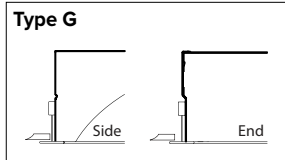
GRID, STATIC



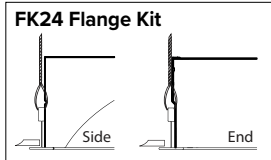
GRID, AIR RETURN



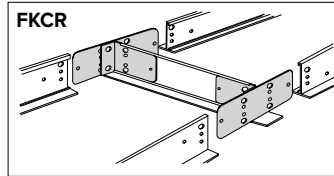
CEILING COMPATIBILITY



For lay-in installation in exposed grid ceilings. Maximum tee widths of 1" and maximum tee heights of 2" allowed.



For hard ceiling applications, order FK24 flange kit. Flange kit wires directly into concealed ceiling opening for a clean, finished appearance.

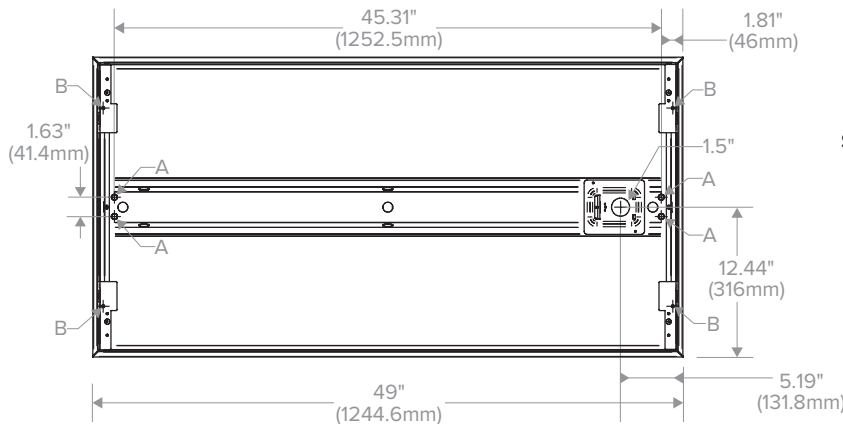


For flanged fixtures in row configurations, the FKCR adapter bracket kit is required in addition to the FK24 kit. Order one less FKCR than the total number of fixtures in row. (Example: Row of two, order (2) FK24 & (1) FKCR)

Row cut out dimensions using FK24s & FKCR adapters:
Width 24³/₈", Length [48" x (# in row)] + ³/₈".
Example: (48" x 2) + ³/₈" = 96³/₈"

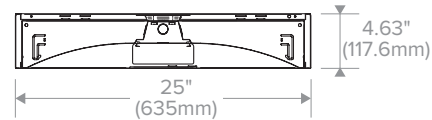
Flange kit cut out dimension for single unit only: 24³/₈" x 48³/₈"

SURFACE MOUNT OR CABLE MOUNT, STATIC ONLY



Surface Mount (SM) and Cable Mount (CM), back of housing

* For Cable Mount a 2" x 3" access plate with (4) ⁷/₈" KOs provided in place of Mounting Collar shown.



Surface section (SM)

Surface Mount:
Order SM ceiling type. Mounting collar required for surface mounting. (4) Mounting knock-outs, 3/8", provided in center channel as indicated at left, marked A.

Cable Mount:
Order CM ceiling type. Use CM48Y2SC3F-KIT 48" Cable Mount Kit for 2" wide CM trim fixtures. Mounting holes are provided in diagonal straps shown at left, marked B.

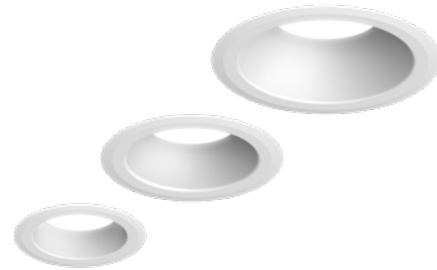
NOTE: All dimensions are in inches; dimensions and specifications are subject to change without notice. Please consult factory or check sample for verification.

LBRST-RD

STANDARD CANLESS DIRECT INSTALL DOWNLIGHT

DATE: _____ LOCATION: _____
 TYPE: _____ PROJECT: _____
 CATALOG #: _____

LITEBOX® standard



FEATURES

- 4", 6" and 8" apertures, delivering 650 to 3000 lumens
- Switchable Lumen and CCT
- Switchable CCT in Warm White (27/30/35K) or Cool White (35/40/50K)
- Optional support pans for Joist or T-Grid ceilings
- Universal 120-277V with 0-10V 10% dimming
- Long Life L90 at >60,000 hrs (TM-21)
- Five year warranty



*(Select models)



SERVICE PROGRAMS



SPECIFICATIONS

CONSTRUCTION

- Canless direct install New Construction or Remodel, Non-IC. Select IC models available.
- Non-conductive "Dead Front" snap-in trims available
- Single piece luminaire allowing for quick, simple and tool-less install

OPTICS

- Decorative snap-in trims, available in white, black and silver
- Polycarbonate lensed optic, suitable for wet location, covered ceiling applications

ELECTRICAL

- LED array with 3 SDCM color consistency
- Long LED life: Maintain 90% of lumen output at >60,000 hours of operation (L90 at 60,000hr TM-21)
- Switchable CCT available in Warm White (2700K, 3000K, 3500K) and Cool White (3500K, 4000K, 5000K)
- 90 CRI+ with R9 >50
- Switchable Lumen: 4" (650/1000lm); 6" (850/1200/1800lm); 8" (3000lm)
- High efficiency integral driver with universal 120-277V, 50/60Hz

ELECTRICAL (CONTINUED)

- Flicker-Free 0-10V dimming to 10%
- See Additional Information section for a list of recommended dimmers
- Meets Class A (<24dba) noise rating
- FCC CFR 47 Part 15 Class B
- ≥ 0.9 Power Factor, <20% THD

INSTALLATION

- Robust trim mounting springs hold fixture firmly against ceiling surface
- Accommodates ceiling thicknesses up to 1" (for 6" and 8"); ¾" (for 4")
- Fixture installs below the ceiling without a housing
- Optional support pan accessories with or without bar hangers available
- Switchable CCT: Field select CCT at installation with an integral switch on fixture module
- Switchable Lumen: Field select lumen output at installation with an integral switch of fixture module

CERTIFICATIONS

- cULus listed to UL1598
- Can be used in direct contact with insulation (IC Rated, SL Only)
- Certified Air Tight per ASTM E283
- Suitable for wet locations, covered ceilings
- ENERGY STAR® Certified
- SL modules meet CA Title 24 High Efficacy (JA8-2019) requirements

WARRANTY

- 5 year warranty

KEY DATA	
Lumen Range	677–3287
Wattage Range	8.1–36.6
Efficacy Range (LPW)	74–106
Reported Life (Hours)	L90 @ 60,000
Input Current (mA)	71–308 (120V)

LBRST-RD

STANDARD CANLESS DIRECT INSTALL DOWNLIGHT

DATE: _____ LOCATION: _____

TYPE: _____ PROJECT: _____

CATALOG #: _____



ORDERING GUIDE

Example: LBRST-4RD-M-LSSLCWC9S9-WH

CATALOG #

FIXTURE MODULE / TRIM

LBRST	Aperture/Shape/Function	Model/Type	LS	Nominal Lumen Range
Family			Switchable Technology	
LBRST LiteBox® Standard	4RD 4" Round 6RD 6" Round 8RD 8" Round ^{1,2}	M Fixture Module/ Trim, Round Direct Install, 120-277V with 0-10V to 10%	LS Switchable Lumen (4" & 6" only) <hr/> Fixed Lumen (Standard)	SL 650/1000 lumens (4" only) 850/1200/1800 lumens (6" only) <hr/> 30L 3000 lumens ^{1,2}

CCT/CRI	Reflector Finish/Color
WWCS9 Warm White Switchable CCT (2700/3000/3500K), 90 CRI CWCS9 Cool White Switchable CCT (3500/4000/5000K), 90 CRI	WH White

Accessories (Order separately)

COLOR TRIM ACCESSORIES

- LBRST-4RD-T-BL** Trim Accessory, 4" Round, Black
- LBRST-4RD-T-SVR** Trim Accessory, 4" Round, Silver
- LBRST-4RD-T-WH** Trim Accessory, 4" Round, White
- LBRST-6RD-T-BL** Trim Accessory, 6" Round, Black
- LBRST-6RD-T-SVR** Trim Accessory, 6" Round, Silver
- LBRST-6RD-T-WH** Trim Accessory, 6" Round, White
- LBRST-8RD-T-BL** Trim Accessory, 8" Round, Black
- LBRST-8RD-T-SVR** Trim Accessory, 8" Round, Silver
- LBRST-8RD-T-WH** Trim Accessory, 8" Round, White

PAN ACCESSORIES

- LB-4R-F-TG** Accessory, Pan w/Bar Hangers for T-Grid/Joist, 4" Round
- LB-4R-F-J** Accessory, Pan Support for Joist, 4" Round
- LB-6R-F-TG** Accessory, w/Bar Hangers for T-Grid/Joist, 6" Round
- LB-6R-F-J** Accessory, Pan Support for Joist, 6" Round
- LB-8R-F-TG** Accessory, w/Bar Hangers for T-Grid/Joist, 8" Round
- LB-8R-F-J** Accessory, Pan Support for Joist, 8" Round

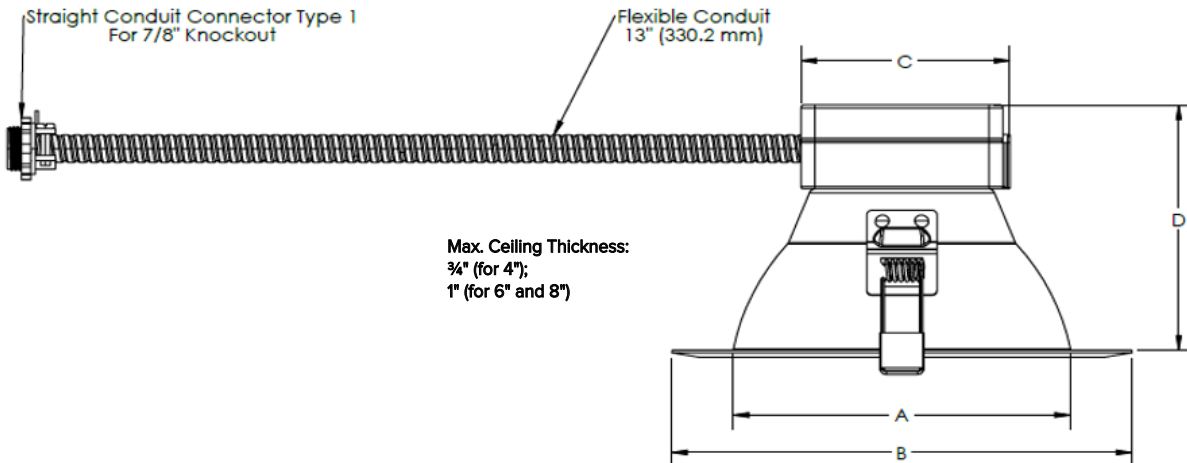
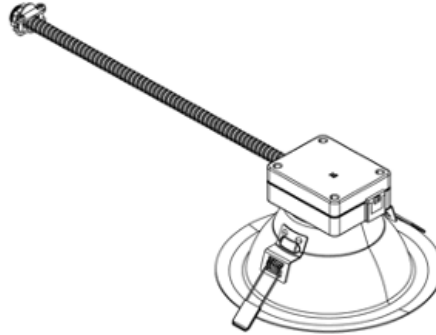
Notes:

- 1 8RD available only with 30L fixed lumen.
- 2 8RD 30L is not IC rated.

LBRST-RD

STANDARD CANLESS DIRECT INSTALL DOWNLIGHT

DIMENSIONS



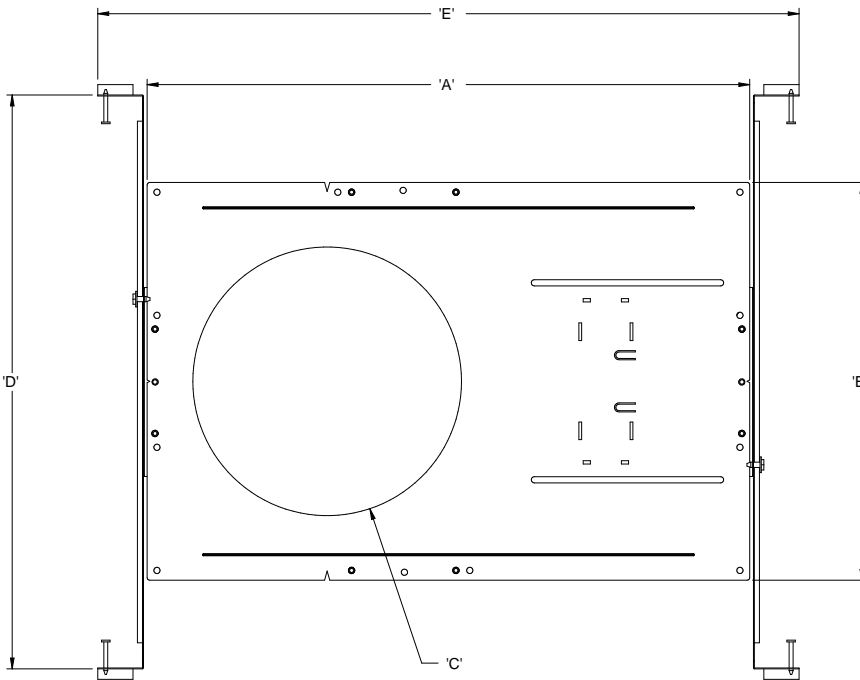
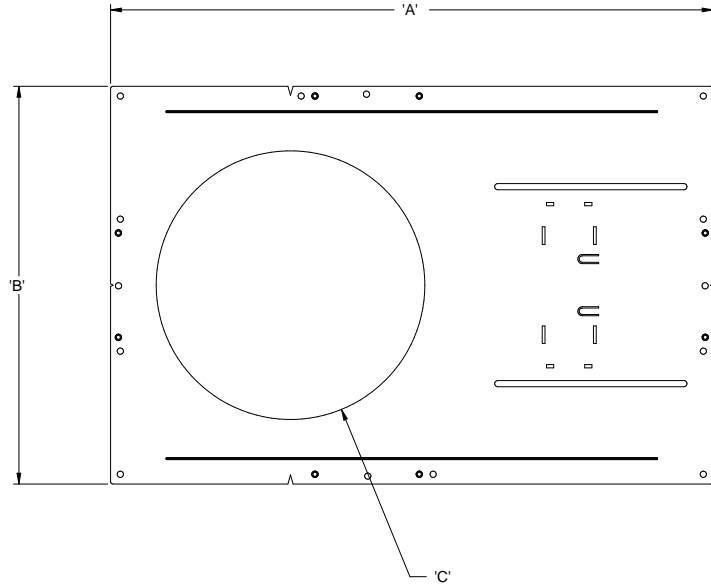
Max. Ceiling Thickness:
 3/4" (for 4");
 1" (for 6" and 8")

Aperture	Ceiling Cutout Min.-Max.
4"	Ø4.5" - 5.0" (Ø114.3 - 127mm)
6"	Ø6.0" - 6.7" (Ø152.4 - 170.2mm)
8"	Ø8.0" - 9.0" (Ø203.2 - 228.6mm)

Nominal Aperture	A Aperture Diameter	B Overall Trim Diameter	C Overall Module Heat Sink	D Overall Height (Assembled)
4"	4.08" (103.74 mm)	5.6" (142.3 mm)	3.51" (89.4 mm)	3.63" (92.21 mm)
6"	5.67" (144.17 mm)	7.74" (196.8 mm)	3.51" (89.4 mm)	4.36" (110.92 mm)
8"	7.46" (189.73 mm)	9.74" (247.6 mm)	3.51" (89.4 mm)	4.93" (125.42 mm)

DIMENSIONS (CONTINUED)

Pan Support for Joist
LB-4R-F-J / LB-6R-F-J / LB-8R-F-J



Pan with Bar Hangers for T-Grid / Joist
LB-4R-F-TG / LB-6R-F-TG / LB-8R-F-TG

Accessory	DESCRIPTION	'A'	'B'	'C'	'D' Min.	'D' Max.	'E'
LB-4R-F-J	4" Round	16.54" (420.1 mm)	6.50" (165.1 mm)	4.92" (125.0 mm)	—	—	—
LB-6R-F-J	6" Round	18.19" (462.0 mm)	9.02" (229.1 mm)	6.26" (159.0 mm)	—	—	—
LB-8R-F-J	8" Round	18.19" (462.0 mm)	12.01" (305.1 mm)	8.11" (206.0 mm)	—	—	—
LB-4R-F-TG	4" Round	16.54" (420.1 mm)	6.50" (165.1 mm)	4.92" (125.0 mm)	14.17" (359.9 mm)	25.00" (635.0 mm)	19.52" (495.8 mm)
LB-6R-F-TG	6" Round	18.19" (462.0 mm)	9.02" (229.1 mm)	6.26" (159.0 mm)	14.17" (359.9 mm)	25.00" (635.0 mm)	21.17" (537.7 mm)
LB-8R-F-TG	8" Round	18.19" (462.0 mm)	12.01" (305.1 mm)	8.11" (206.0 mm)	14.17" (359.9 mm)	25.00" (635.0 mm)	21.17" (537.7 mm)

LBRST-RD

STANDARD CANLESS DIRECT INSTALL DOWNLIGHT

PERFORMANCE DATA TABLE

Nominal Aperture	Switchable Lumen Setting	Nominal Lumens	Cat #	CCT	CRI	Delivered Lumens	Watts	LPW
4"	Low	650	LBRST-4RD-M-LSSLWWCS9-WH	27K	90	677	8.5W	80
			LBRST-4RD-M-LSSLWWCS9-WH	30K		711	8.1W	88
			LBRST-4RD-M-LSSLWWCS9-WH	35K		706	8.5W	83
			LBRST-4RD-M-LSSLCWCS9-WH	40K		779	8.3W	94
			LBRST-4RD-M-LSSLCWCS9-WH	50K		772	8.7W	89
	High	1000	LBRST-4RD-M-LSSLWWCS9-WH	27K		971	13.8W	70
			LBRST-4RD-M-LSSLWWCS9-WH	30K		1063	13.1W	81
			LBRST-4RD-M-LSSLWWCS9-WH	35K		1033	13.8W	75
			LBRST-4RD-M-LSSLCWCS9-WH	40K		1174	13.4W	88
			LBRST-4RD-M-LSSLCWCS9-WH	50K		1135	14.1W	80
6"	Low	850	LBRST-6RD-M-LSSLWWCS9-WH	27K	795	8.8W	90	
			LBRST-6RD-M-LSSLWWCS9-WH	30K	841	8.4W	100	
			LBRST-6RD-M-LSSLWWCS9-WH	35K	842	8.7W	97	
			LBRST-6RD-M-LSSLCWCS9-WH	40K	903	8.5W	106	
			LBRST-6RD-M-LSSLCWCS9-WH	50K	908	8.8W	103	
	Middle	1200	LBRST-6RD-M-LSSLWWCS9-WH	27K	1136	13.4W	85	
			LBRST-6RD-M-LSSLWWCS9-WH	30K	1225	12.8W	96	
			LBRST-6RD-M-LSSLWWCS9-WH	35K	1211	13.4W	90	
			LBRST-6RD-M-LSSLCWCS9-WH	40K	1326	12.9W	103	
			LBRST-6RD-M-LSSLCWCS9-WH	50K	1310	13.5W	97	
	High	1800	LBRST-6RD-M-LSSLWWCS9-WH	27K	1587	21.3W	74	
			LBRST-6RD-M-LSSLWWCS9-WH	30K	1786	20.3W	88	
			LBRST-6RD-M-LSSLWWCS9-WH	35K	1728	21.3W	81	
			LBRST-6RD-M-LSSLCWCS9-WH	40K	1945	20.5W	95	
			LBRST-6RD-M-LSSLCWCS9-WH	50K	1864	21.6W	86	
8"	High	3000	LBRST-8RD-M-30LWWCS9-WH	27K	2760	36.6W	75	
			LBRST-8RD-M-30LWWCS9-WH	30K	3038	34.8W	87	
			LBRST-8RD-M-30LWWCS9-WH	35K	2910	36.8W	79	
			LBRST-8RD-M-30LCWCS9-WH	40K	3287	34.8W	94	
			LBRST-8RD-M-30LCWCS9-WH	50K	3125	36.6W	85	

LBRST-RD

STANDARD CANLESS DIRECT INSTALL DOWNLIGHT

PHOTOMETRY

LBRST-4RD-M-LSSLWWCS9-WH

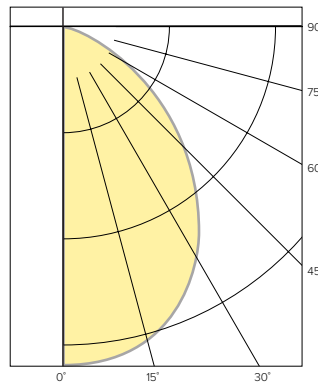
LUMINAIRE DATA

Test No	R17582-1-01
Description	4" LBRST, High Lumen @ 3000K
Delivered Lumens	1135
Watts	13.8
Efficacy	82
Mounting	Recessed
Spacing Criterion	1.2
Beam Angle (FWHM)	89

ZONAL LUMEN SUMMARY

Zone	Lumens	% Luminaire
0-40	203	18%
0-60	1019	90%
0-90	1134	100%
0-180	1134	100%

POLAR GRAPH



CANDELA DISTRIBUTION

Degree	Candela
0	563
5	561
15	534
25	479
35	389
45	280
55	169
65	74
75	30
85	8
90	0

LUMINANCE DATA*

Vertical Angle	Average
45°	50018
55°	37592
65°	22696
75°	14696
85°	11500

*Candela/Square Meter

LBRST-6RD-M-LSSLWWCS9-WH

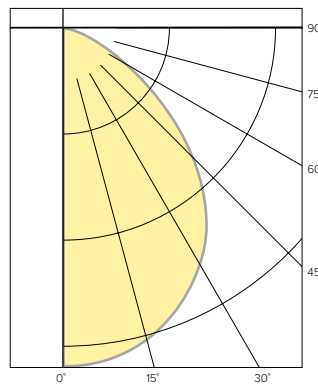
LUMINAIRE DATA

Test No	R17586-1-01
Description	6" LBRST, High Lumen @ 3000K
Delivered Lumens	1841
Watts	21.3
Efficacy	86.5
Mounting	Recessed
Spacing Criterion	1.2
Beam Angle (FWHM)	91

ZONAL LUMEN SUMMARY

Zone	Lumens	% Luminaire
0-40	324	18%
0-60	1669	91%
0-90	1836	100%
0-180	1840	100%

POLAR GRAPH



CANDELA DISTRIBUTION

Degree	Candela
0	899
5	892
15	847
25	763
35	636
45	450
55	253
65	97
75	45
85	14
90	0

LUMINANCE DATA*

Vertical Angle	Average
45°	40545
55°	28464
65°	15065
75°	11164
85°	10492

*Candela/Square Meter

LBRST-8RD-M-30LWWCS9-WH

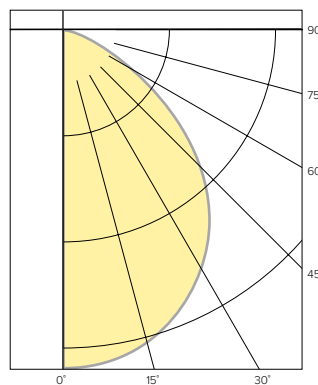
LUMINAIRE DATA

Test No	R17594-1-01
Description	8" LBRST, High Lumen @ 3000K
Delivered Lumens	3194
Watts	36.4
Efficacy	87.8
Mounting	Recessed
Spacing Criterion	1.2
Beam Angle (FWHM)	94

ZONAL LUMEN SUMMARY

Zone	Lumens	% Luminaire
0-40	1863	58%
0-60	2933	92%
0-90	3187	100%
0-180	3194	100%

POLAR GRAPH



CANDELA DISTRIBUTION

Degree	Candela
0	1533
5	1524
15	1453
25	1317
35	1127
45	844
55	474
65	157
75	65
85	18
90	0

LUMINANCE DATA*

Vertical Angle	Average
45°	42395
55°	29886
65°	13520
75°	8962
85°	7702

*Candela/Square Meter

LUMEN MULTIPLIER

Option	27K, 90 CRI	30K, 90 CRI	35K, 90 CRI	40K, 90 CRI	50K, 90 CRI
Multiplier	0.89	1.00	0.96	1.08	1.00

Photometrics above are published at nominal 3000K, 90 CRI. This table may be used to approximate the lumen values at different Kelvin temperature settings. Power consumption remains the same.

LBRST-RD

STANDARD CANLESS DIRECT INSTALL DOWNLIGHT

DATE: _____ | LOCATION: _____

TYPE: _____ | PROJECT: _____

CATALOG #: _____

ADDITIONAL INFORMATION

Dimming Compatibility

For more details and recommended dimmer list, see Dimming Compatibility Information on currentlighting.com/prescolite.

PROJECT: _____
 CATALOG #: _____
 FIXTURE TYPE: _____
 NOTES: _____

TR Surface Wraparound Gen 2



The **TR G2 Series Surface Wraparound** delivers industry-leading performance with substantial energy savings compared to traditional fluorescent lighting. The curved diffuser provides even light distribution with minimum number of fixtures needed. This luminaire comes in lumen packages 3,900 to 5,280 lumens and color temperatures 3500K, 4000K and 5000K. Optional emergency battery backup is available.

APPLICATIONS

Commercial and Retail spaces including Offices, Conference rooms, etc.

REPLACEMENT

2 Lamp T8 32W and 3 Lamp T8 32W

PERFORMANCE INFORMATION

SERIES NUMBER	WATT	LUMENS	CCT
TR 4 39 G2 35K	30W	3,900	3500K
TR 4 39 G2 4K	30W	4,050	4000K
TR 4 39 G2 5K	30W	4,050	5000K
TR 4 52 G2 35K	40W	5,200	3500K
TR 4 52 G2 4K	40W	5,200	4000K
TR 4 52 G2 5K	40W	5,280	5000K

OPTIONS



HBP-112-L7-OEM



BRI819P-B-D



EL UNV-10W

ORDERING GUIDE							EXAMPLE: TR 4 39 G2 5K
Luminaire Type	Size	Lumen Output	Generation	Voltage	CCT	Finish	Options
TR Surface Wraparound	4= 4 ft	39 4,050 Lumens 52 5,200 Lumens	G2	BLANK= 120-277V	35K 3500K 4K 4000K 5K 5000K	BLANK= White	BLANK= No Option HBP-112-L7-OEM= High/Low-Bay PIR On/Off Sensor BRI819P-B-D= PIR Motion/Photo Sensor, 120/277V AC, 1-10V Dimming (Choose one) L1= 360° Lens (Max. 25ft mounting height) L2= 360° Lens (Max. 40ft mounting height) EL UNV-10W= Emergency Backup Controller

Due to continuous product improvements, specification and/or equipment updates may change without notice.

SPECIFICATIONS

HOUSING

Body consists of fabricated 22ga steel

AMBIENT TEMPERATURE

Suitable for use in -20°C to 45°C (-4°F to 113°F)

MOUNTING

Surface mount

EFFICACY

Up to 120 lumens per watt (see individual wattage data)

CCT AND CRI

3500K, 4000K, and 5000K CCT available; 82 CRI

OPTICS

Volumetric illumination specular reflector with frosted acrylic lens.

WARRANTY

5-year limited warranty. Comprehensive warranty terms can be located on www.slgus.com.

LIFETIME

L70 TM-21 @ 70°C >100,000 HRS

ELECTRICAL

High quality constant-current drivers rated for 50/60Hz operation, 120-277V input. Standard 0-10V dimmer.

ENERGY DATA

Power factor above 90%.

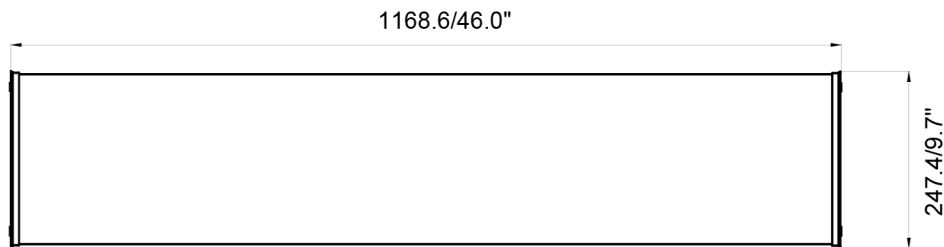
FINISH

White Polyester Powder finish.

CERTIFICATIONS

UL Listed for damp and dry locations. FCC compliant. RoHs compliant. Design Lights Consortium® (DLC) Standard 5.1 qualified product. Not all versions of this product may be DLC qualified. Please visit www.slgus.com to confirm which versions are qualified.

DIMENSIONS



Depth: 3.41 in

Weight: 9.48 lb

Due to continuous product improvements, specification and/or equipment updates may change without notice.

OPTIONS



HBP-112-L7-OEM

High/Low-Bay PIR On/Off Sensor

The **HBP-112-L7-OEM** on/off PIR motion sensor is ideal for warehouses, distribution centers, gymnasiums, and other indoor applications.

Operation Voltage	Mounting Height	Coverage	Shape	Adjustable Time Delay	Operating Temperature	Applications
120V/ 277V/ 347V	15-40 ft	2.5x Height*	Cone	5/10/15/20/30 min. Default 15 min.	0°C to 70°C 32°F to 158°F	Indoor Only

*Covers a 100 ft diameter when the mounting height is 40 ft.



BRI819-P-B-D

Motion Sensor, 1-10V Dimming

The **BRI819-P-B-D** provides multi-level occupancy control with 1-10V adjustable dimming. This motion sensor can be attached externally to the fixture. Requires L1 or L2 lens depending on the mounting height.

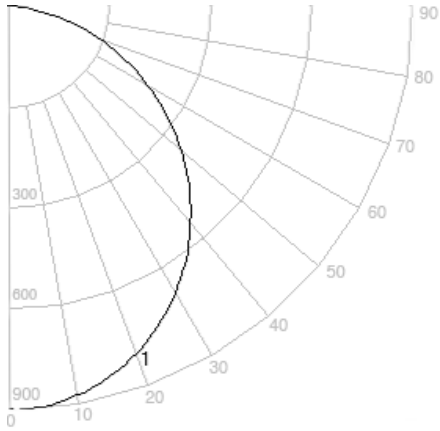
Operation Voltage	Shape	Adjustable Time Delay	Operation Temperature	Mounting Height for L1	Mounting Height for L2
120/277V	Cone	10 sec - 60 min (adjustable)	-40°F to 167°F (-40°C to 75°C)	Max 25ft*	Max 40ft**

*Covers a 30 ft diameter when the mounting height is 25 ft.

**Covers a 60 ft diameter when the mounting height is 40 ft.

Due to continuous product improvements, specification and/or equipment updates may change without notice.

PHOTOMETRIC

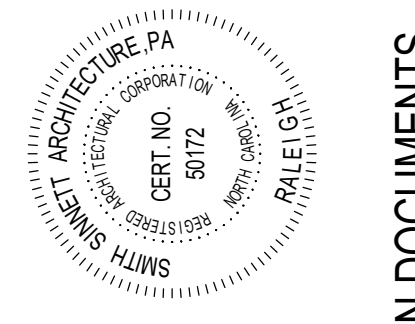


TR 4 52 G2 4K

ELECTRICAL LOAD

		Current (A)			
Series Number	Wattage	120V	208V	240V	277V
TR 4 39 G2 35K/4K/5K	30W	0.25	0.14	0.13	0.11
TR 4 52 G2 35K/4K/5K	40W	0.33	0.19	0.17	0.14

Due to continuous product improvements, specification and/or equipment updates may change without notice.

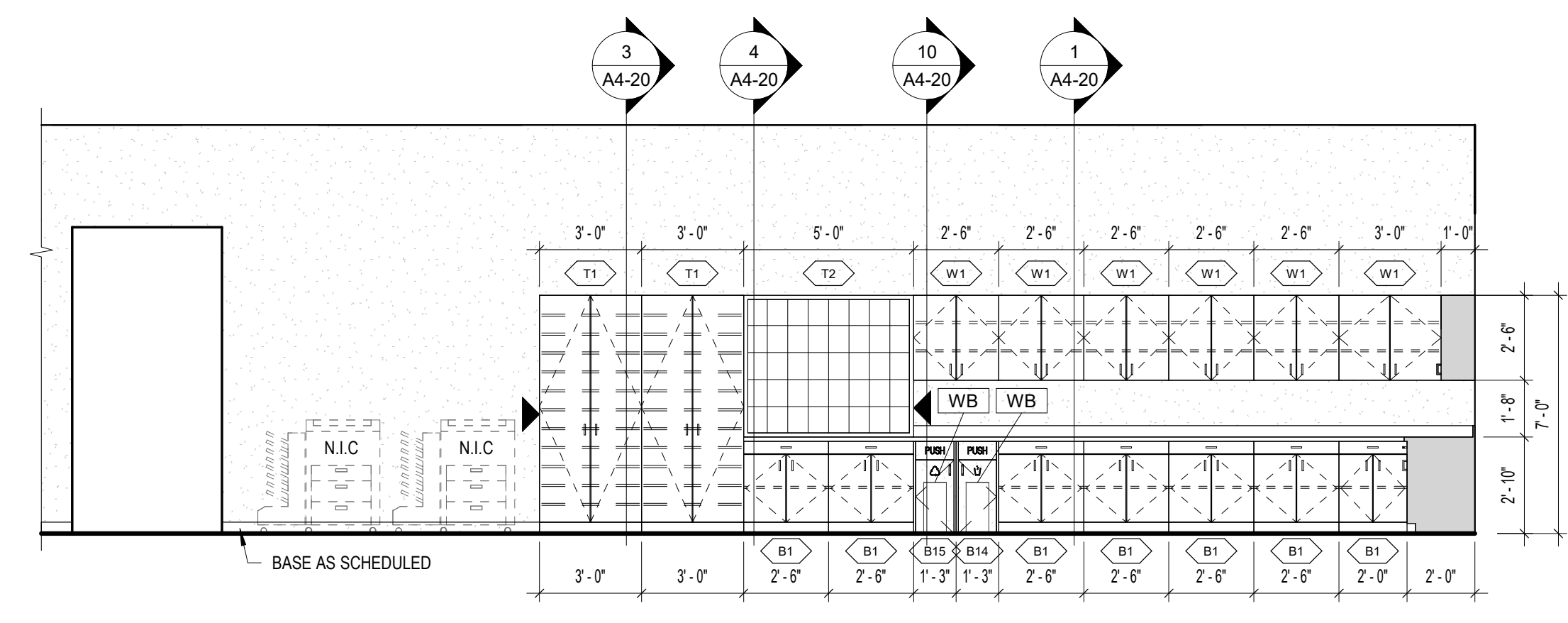


CASEWORK NOTES AND LEGEND:

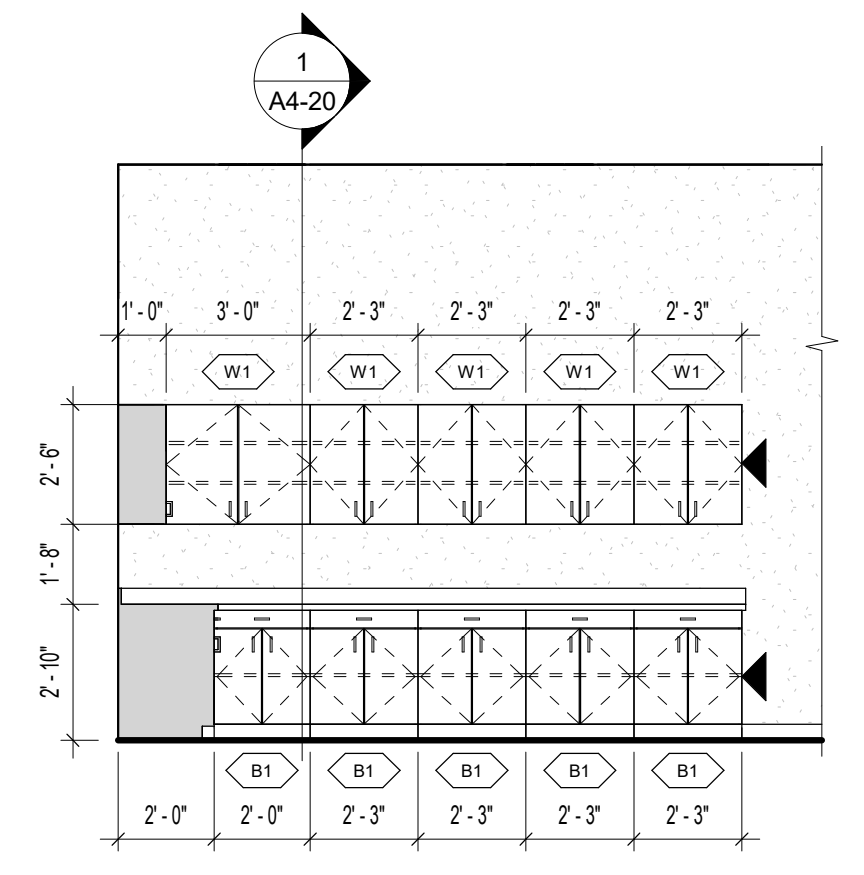
MARK	DESCRIPTION
B1	2'-0" DEEP BASE CABINET; TWO HINGED DOORS AND ONE 6" HIGH DRAWER AND ONE ADJUSTABLE SHELF. PROVIDE FIXED VERTICAL DIVIDER IN UNITS MORE THAN 3'-0" WIDE. HEIGHT/WIDTH VARIES.
B2	2'-0" DEEP BASE CABINET; TWO HINGED DOORS AND TWO 6" HIGH DRAWERS AND ONE ADJUSTABLE SHELF. PROVIDE FIXED VERTICAL DIVIDER IN UNITS MORE THAN 3'-0" WIDE. HEIGHT/WIDTH VARIES.
B6	2'-0" DEEP ADA SINK BASE CABINET; PROVIDE END PANELS, SUPPORTS, AND REMOVABLE ACCESS COVER PANEL. WIDTH VARIES. REFER TO SECTION DETAIL.
B8	2'-0" DEEP BASE CABINET; FOUR DRAWERS. HEIGHT/WIDTH VARIES.
B9	2'-0" DEEP BASE CABINET; TWO DRAWERS AND ONE LEGAL SIZE FILE DRAWER. HEIGHT/WIDTH VARIES.
B10	2'-0" DEEP BASE FILLER PANEL. HEIGHT/WIDTH VARIES.
B14	2'-0" DEEP BASE CABINET; ONE HINGED DOOR AND ONE 6" HIGH PUSH PANEL WITH TRASH SYMBOL. PROVIDE HORIZONTAL DIVIDER WITH HOLE FOR DISPOSAL. HEIGHT/WIDTH VARIES.
B15	2'-0" DEEP BASE CABINET; ONE HINGED DOOR AND ONE 6" HIGH PUSH PANEL WITH RECYCLING SYMBOL. PROVIDE HORIZONTAL DIVIDER WITH HOLE FOR DISPOSAL. HEIGHT/WIDTH VARIES.
W1	1'-0" DEEP WALL CABINET; TWO HINGED DOORS AND TWO ADJUSTABLE SHELVES. PROVIDE FIXED VERTICAL DIVIDER IN UNITS MORE THAN 3'-0" WIDE. HEIGHT/WIDTH VARIES. FOR HEIGHTS OVER 4'-0" INCREASE TO THREE ADJUSTABLE SHELVES.
W2	1'-0" DEEP WALL CABINET; TWO HINGED DOORS AND ONE ADJUSTABLE SHELF. PROVIDE FIXED VERTICAL DIVIDER IN UNITS MORE THAN 3'-0" WIDE. HEIGHT/WIDTH VARIES.
W10	1'-0" DEEP CORNER WALL CABINET; ONE HINGED DOOR & TWO ADJUSTABLE SHELVES. HEIGHT VARIES. FOR HEIGHTS OVER 4'-0" INCREASE TO THREE ADJUSTABLE SHELVES. FOR HEIGHTS LESS THAN 2'-0" REDUCE TO ONE ADJUSTABLE SHELF.
T1	2'-0" DEEP, 7'-0" TALL STORAGE CABINET; TWO HINGED DOORS WITH 12 ADJUSTABLE SHELVES. PROVIDE FIXED VERTICAL DIVIDER IN UNITS MORE THAN 3'-0" WIDE. WIDTH VARIES.
T2	(14) COLUMNS OF EQUALLY SPACED MAIL SLOTS, (4) ROWS. WIDTH VARIES, SEE ELEVATIONS.
S24	(2) 24" DEEP SHELVES AND (4) 16" DEEP SHELVES; SOLID WOOD ADJUSTABLE SHELVES ON METAL BRACKETS. 7'-6" TRACK HEIGHT. WIDTH VARIES, SEE ELEVATIONS.

1. ALL CASEWORK SHOWN IS MANUFACTURED PLASTIC LAMINATE CASEWORK, TYPICAL UNLESS NOTED OTHERWISE.
2. ALL COUNTERTOPS ARE TO BE SOLID SURFACE, TYPICAL UNLESS NOTED OTHERWISE.

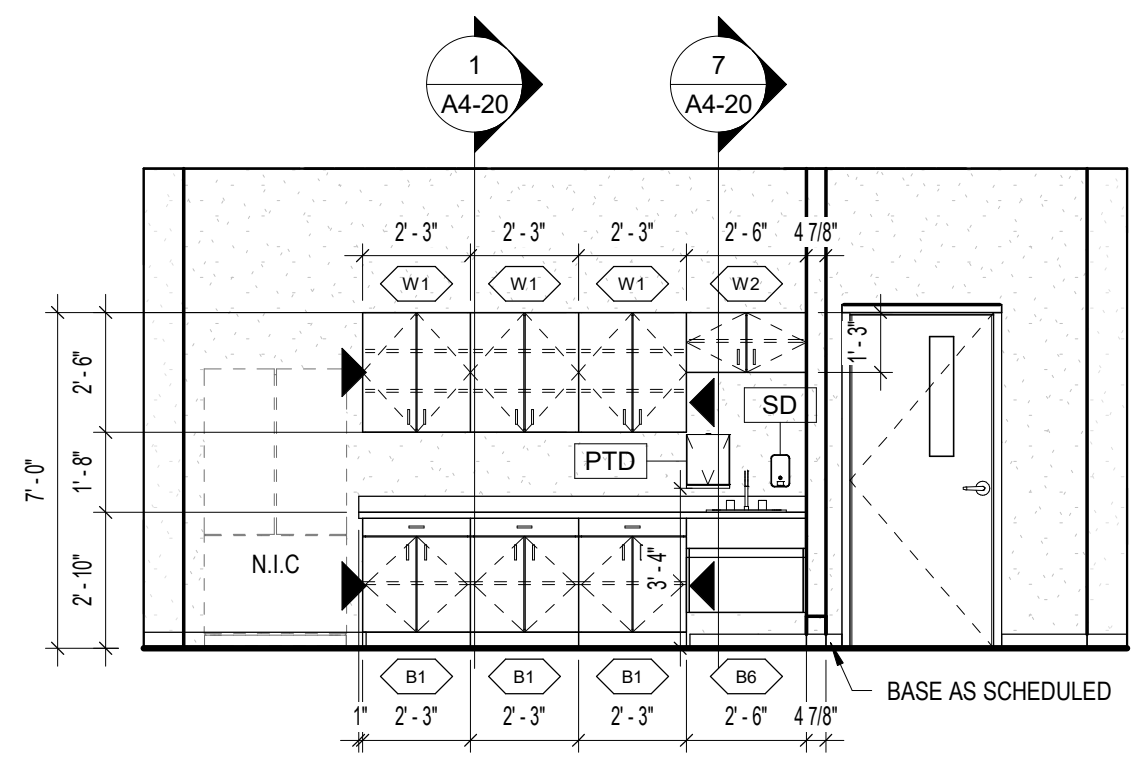
INDICATES FINISHED END PANEL



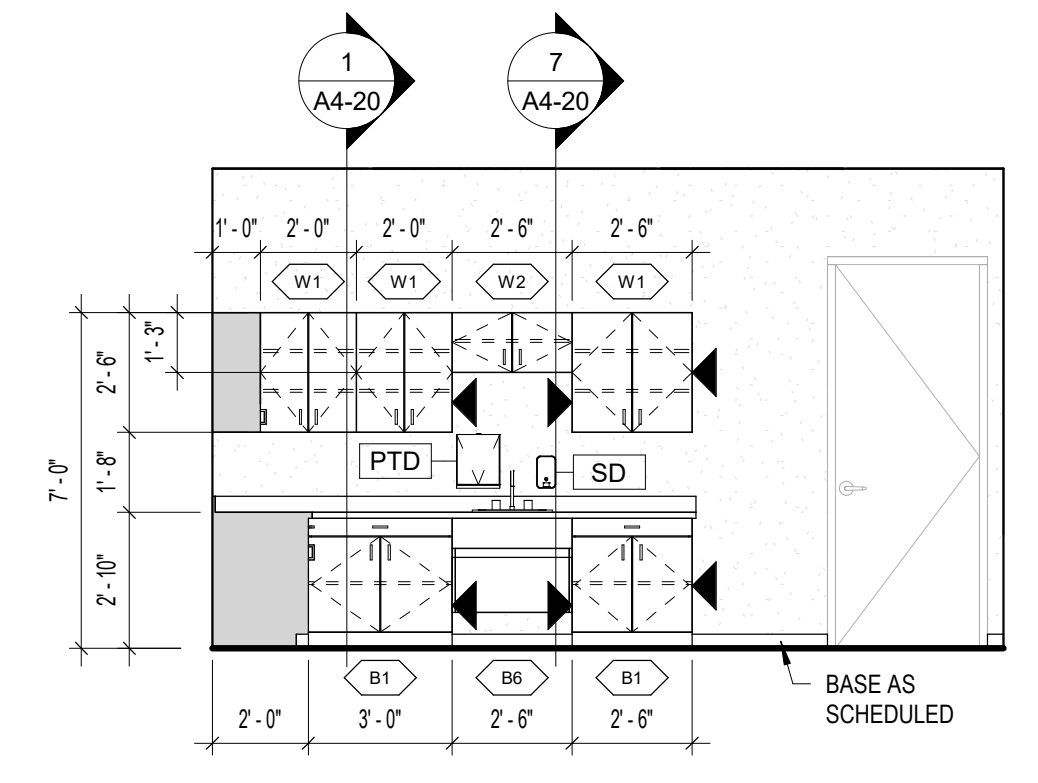
14 WORK AREA 227 - N
A4-10 1/4" = 1'-0"



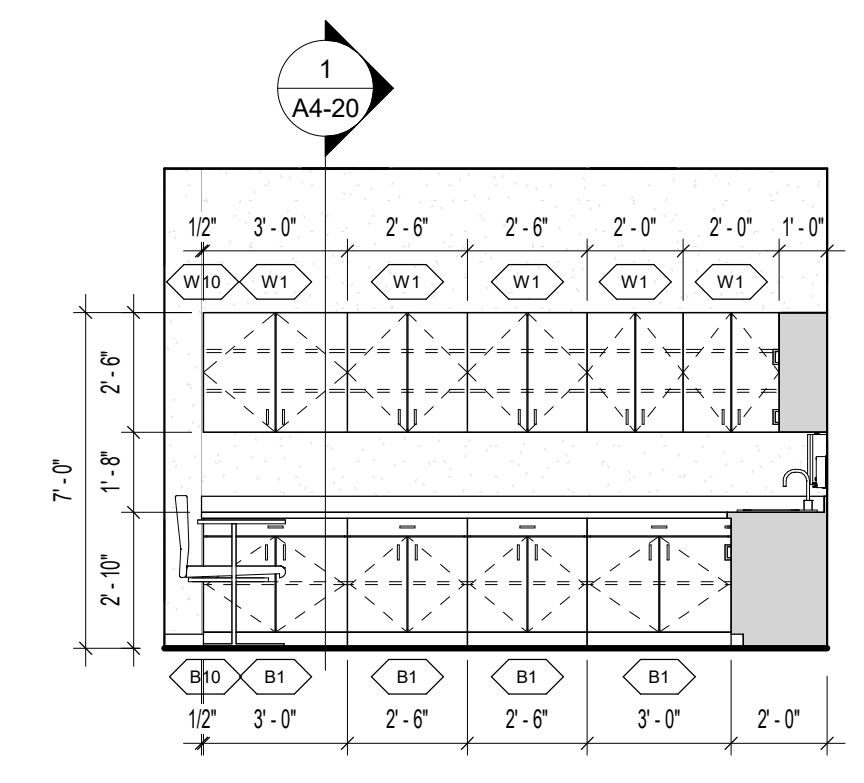
13 WORK AREA 227 - E
A4-10 1/4" = 1'-0"



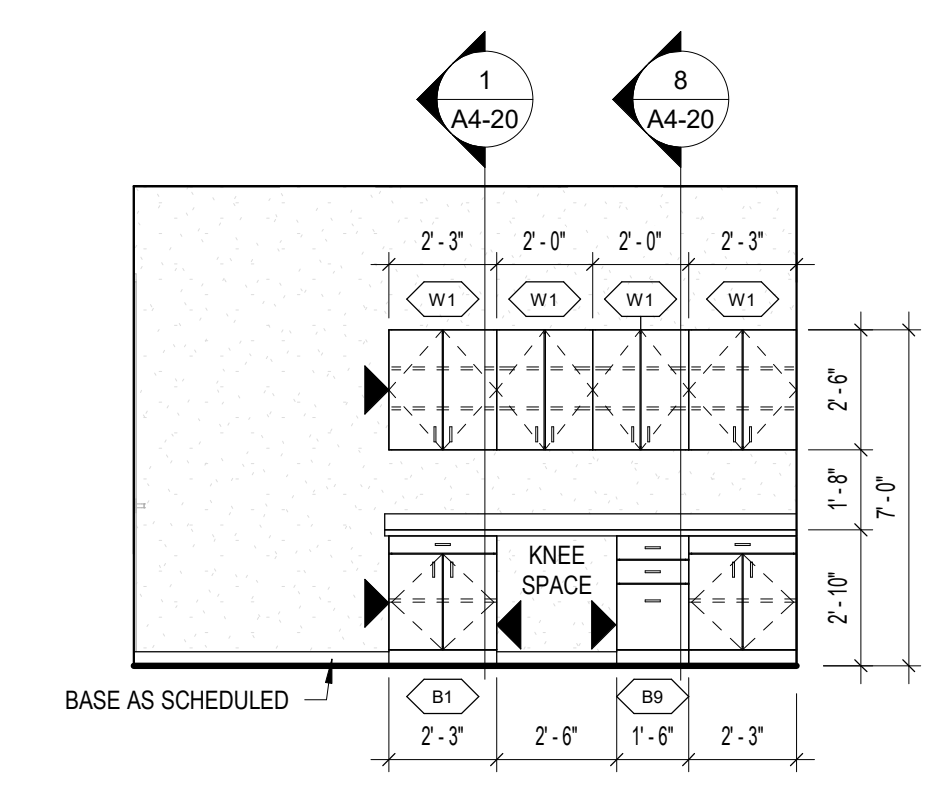
12 BREAK ROOM 220
A4-10 1/4" = 1'-0"



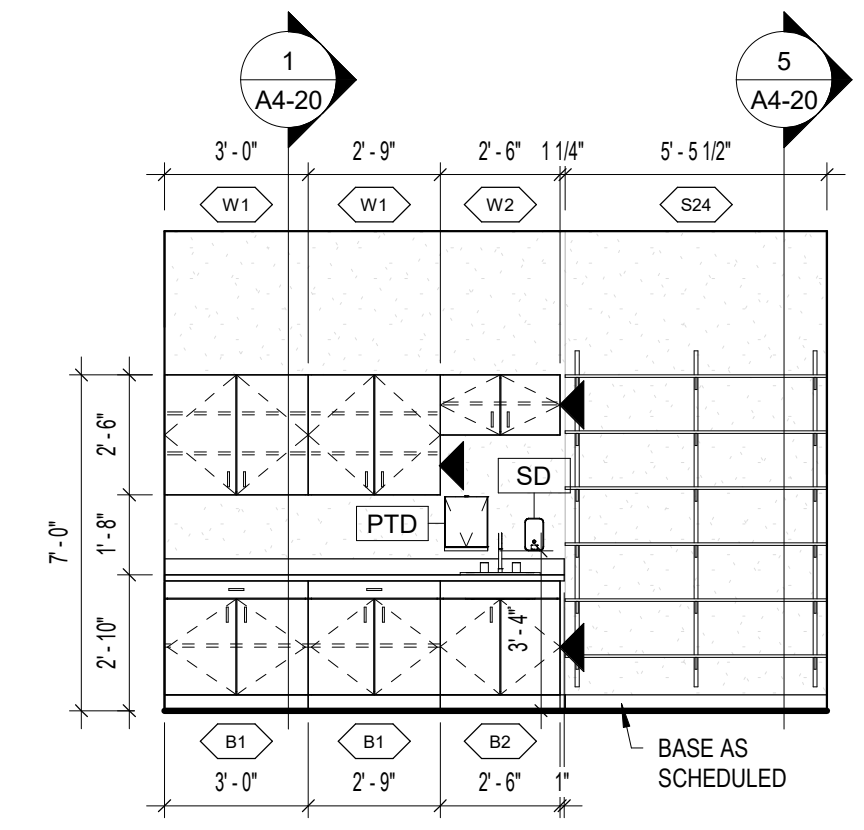
11 LAB 215 - S
A4-10 1/4" = 1'-0"



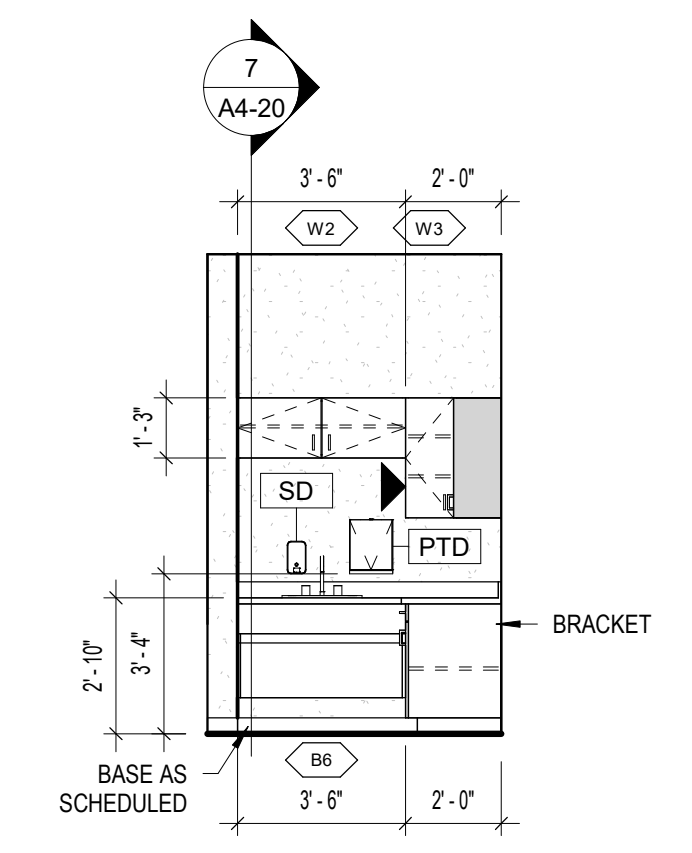
10 LAB 215 - E
A4-10 1/4" = 1'-0"



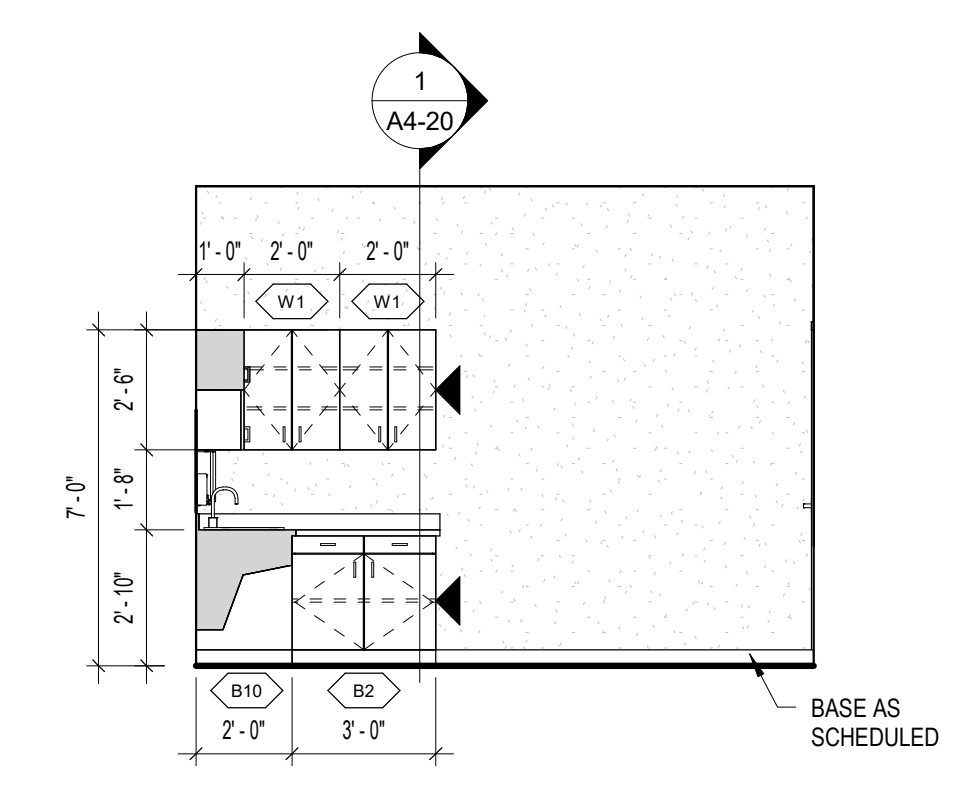
9 LAB 215 - W
A4-10 1/4" = 1'-0"



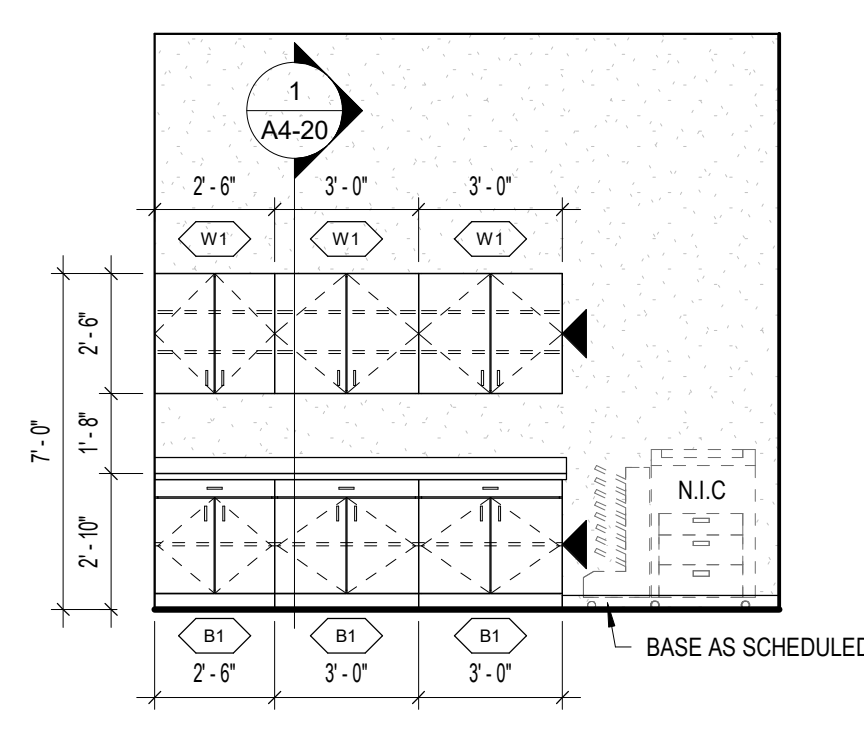
8 PUMP STORAGE 214
A4-10 1/4" = 1'-0"



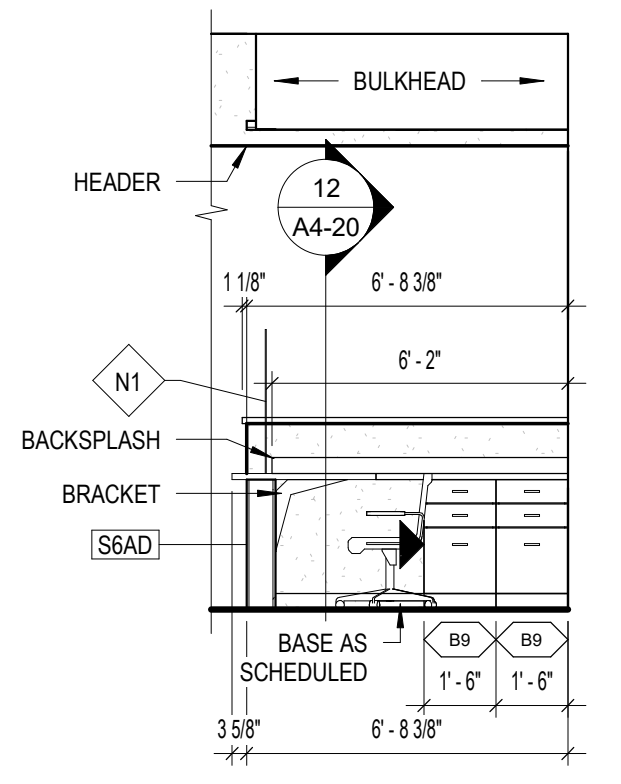
7 LACTATION 210 - S
A4-10 1/4" = 1'-0"



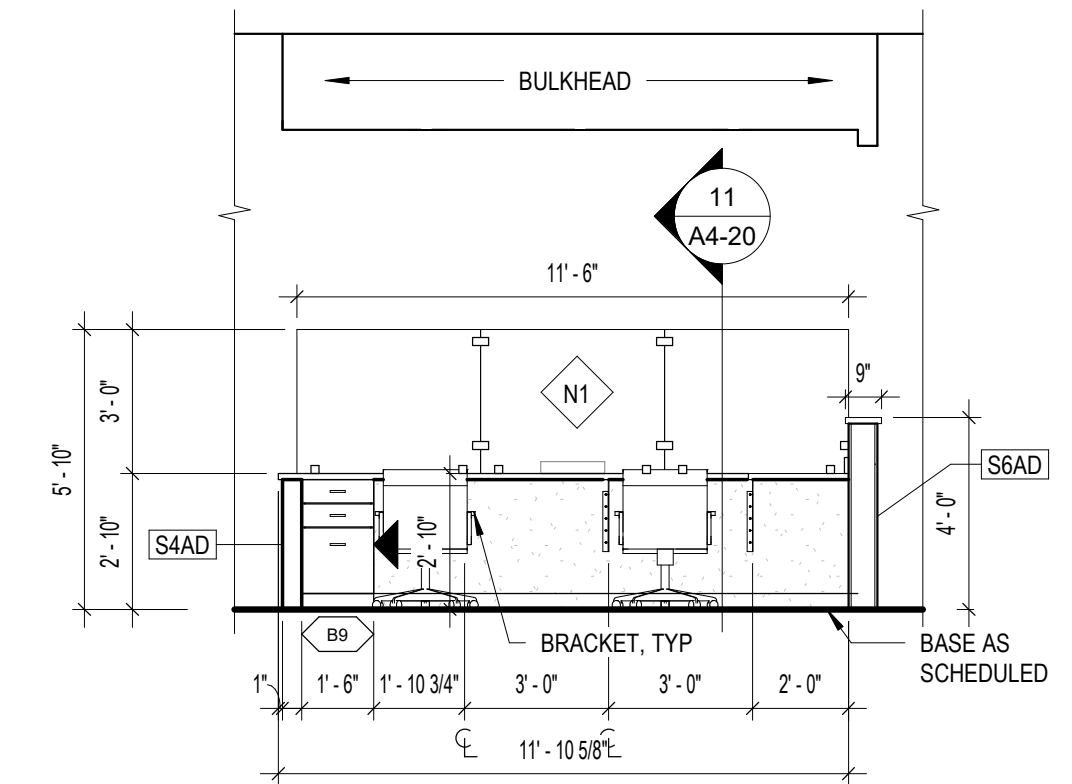
6 LACTATION 210 - W
A4-10 1/4" = 1'-0"



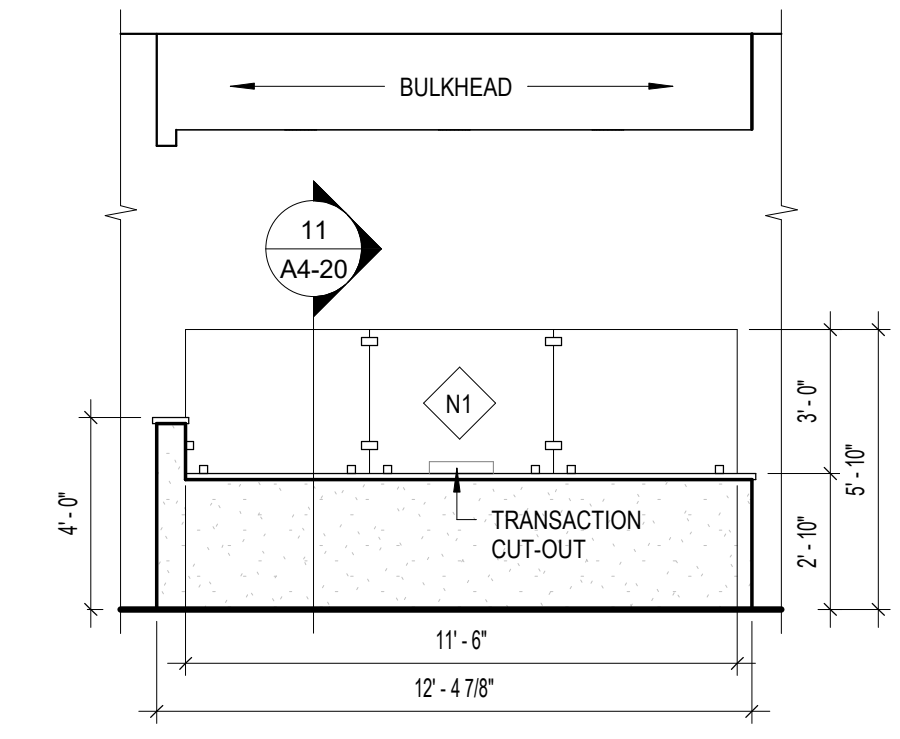
5 OPEN OFFICES 208
A4-10 1/4" = 1'-0"



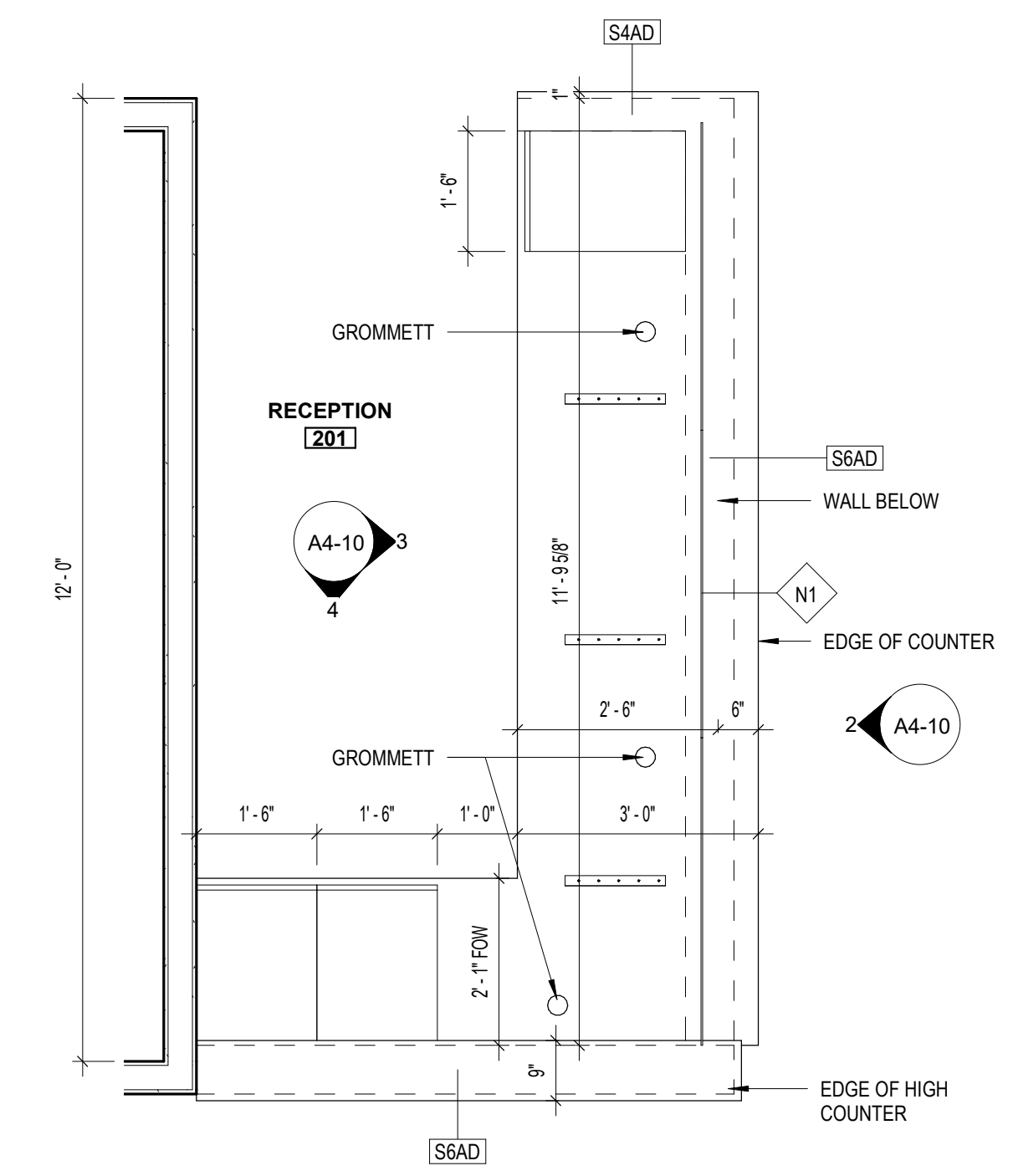
4 RECEPTION 201 - S
A4-10 1/4" = 1'-0"



3 RECEPTION 201 - E
A4-10 1/4" = 1'-0"



2 RECEPTION 201 - FRONT
A4-10 1/4" = 1'-0"



1 ENLARGED RECEPTION
A4-10 1/2" = 1'-0"

B	07/10/2023	ADDENDUM 2
ID	DATE	DESCRIPTION

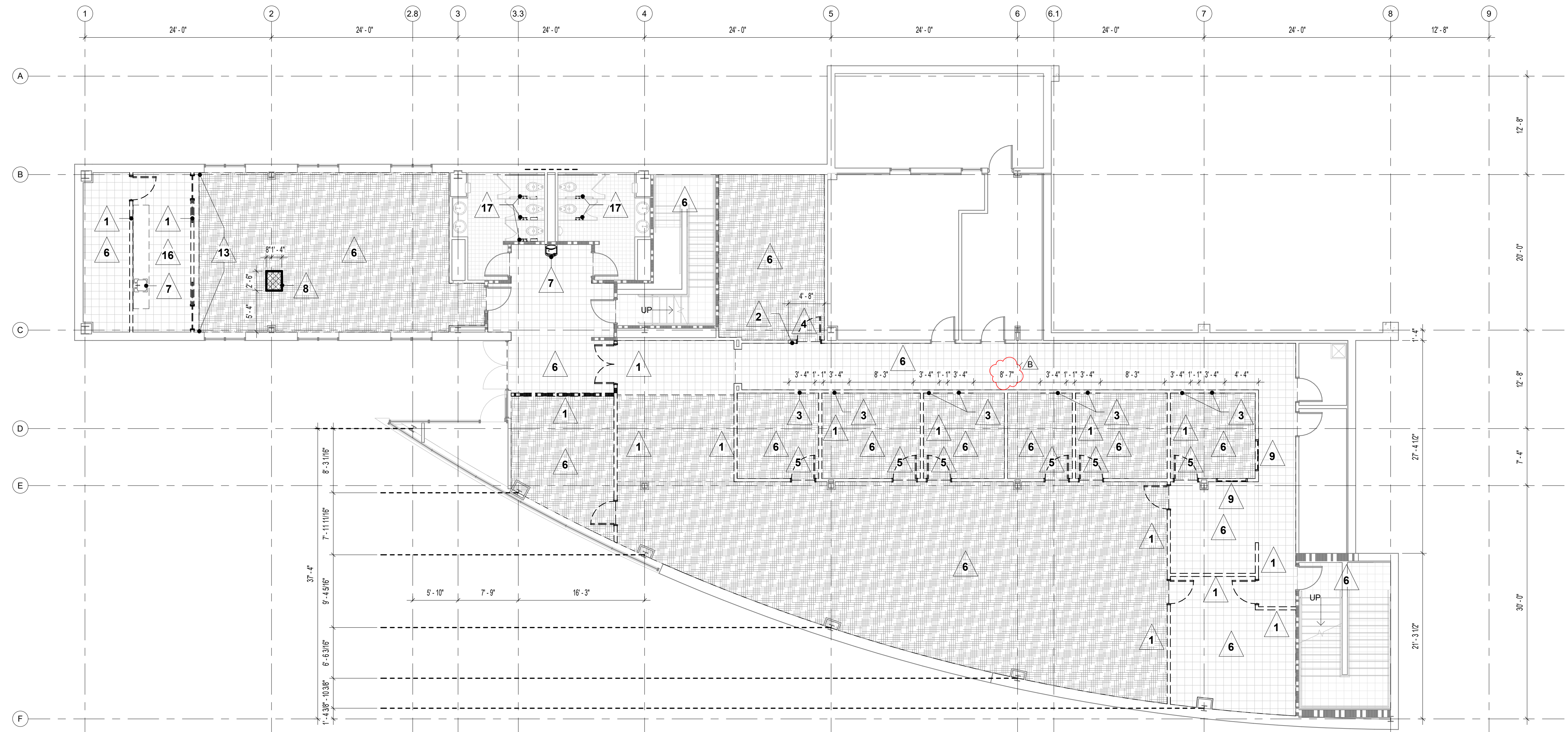
DRAWN BY: LB
CHECKED BY: RC

INTERIOR
ELEVATIONS AND
ENLARGED PLANS

DEMOLITION LEGEND:	
SYMBOL	DESCRIPTION
	EXISTING CONCRETE SLAB TO BE REMOVED. SEE KEYED NOTE 8.
	EXISTING TO BE REMOVED DURING DEMOLITION
	EXISTING TO REMAIN
	DEMOLITION KEYED NOTE

- GENERAL DEMOLITION NOTES:**
- ALL CONDITIONS SHALL BE FIELD VERIFIED BY THE CONTRACTOR WHERE DEMOLITION IS TO OCCUR. THE CONTRACTOR SHALL NOTIFY ARCHITECT OF ANY INCONSISTENCIES IN WRITING PRIOR TO STARTING ANY WORK.
 - THE CONTRACTOR SHALL BE RESPONSIBLE FOR WEEKLY AND/OR DAILY REMOVAL AND PROPER DISPOSAL OF ALL DEBRIS ACCUMULATED DURING DEMOLITION AND CONSTRUCTION.
 - ANY FLOOR, CEILING, WALL OR OTHER MATERIALS INCLUDING FINISHES IN AREAS TO REMAIN ARE THE RESPONSIBILITY OF THE CONTRACTOR TO PROTECT. ANY MATERIALS DAMAGED DURING CONSTRUCTION OR DEMOLITION SHALL BE RETURNED TO THEIR ORIGINAL STATE, OR IMPROVED AS INDICATED BY THE OWNER OR ARCHITECT, OR REPLACED WITH A NEW MATERIAL TO MATCH ADJACENT MATERIALS, TYPICAL.
 - CONTRACTOR SHALL PATCH AND REPAIR ALL EXISTING SURFACES TO REMAIN AND MATERIALS EXPOSED TO VIEW WHERE OTHER ITEMS OR MATERIALS HAVE BEEN REMOVED.
 - REFER TO PLUMBING, MECHANICAL AND ELECTRICAL DRAWINGS FOR ADDITIONAL AND COMPLETE SCOPE OF DEMOLITION THAT MAY OR MAY NOT BE NOTED ON THE ARCHITECTURAL DEMOLITION PLAN AND NOTES.
 - CONTRACTOR SHALL PATCH AND FILL IN ANY VOIDS LEFT FROM THE DEMOLITION OF ANY PLUMBING, MECHANICAL, OR ELECTRICAL ITEMS. REFER TO PLUMBING, MECHANICAL, AND ELECTRICAL DRAWINGS FOR COMPLETE SCOPE OF DEMOLITION.
 - CONTRACTOR SHALL REMOVE ALL WALL MOUNTED FIXTURES OR ITEMS UNLESS OTHERWISE NOTED. ALL WALLS SHALL BE REPAIRED, AND VOIDS FILLED AFTER FIXTURE REMOVAL. ALL FINISHES SHALL MATCH ADJACENT SURFACES. REMOVE ALL FOREIGN MATTER, SHELVING, LOOSE DEBRIS INCLUDING TAPE, ADHESIVE, NAILS, SCREWS, ETC. FROM WALLS. SCRAPE, WIRE BRUSH, AND SAND SMOOTH. WASH ALL PAINTED SURFACES TO REMOVE ANY "FILM OR RESIDUE". PREPARE SURFACES TO PROVIDE A MAXIMUM DEGREE OF NEW PAINT ADHESION. PATCH AND REPAIR ALL VOIDS IN PREPARATION FOR NEW FINISHES.
 - ALL FIXTURES, WALLS AND PORTIONS OF WALLS SHOWN AS DASHED LINES OR LABELED SHALL BE DEMOLISHED UNLESS ELEMENTS REMOVED OR REPLACED. CONTRACTOR SHALL PROVIDE ADEQUATE SHORING AND BRACING AND IS RESPONSIBLE FOR ANY FAILURE DUE TO LACK OF PROPER BRACING.
 - DURING THE BIDDING PROCESS, CONTRACTORS SHALL TAKE NOTE OF EXISTING PLUMBING, MECHANICAL, AND ELECTRICAL ITEMS IN AREAS TO BE RENOVATED. ITEMS INCLUDE BUT ARE NOT LIMITED TO WIRES, CONDUITS, PIPES, THERMOSTATS, FIRE ALARM DEVICES, PANEL CANS, ETC. THESE HAVE BEEN IDENTIFIED IN THE DEMOLITION DRAWINGS FOR ARCHITECTURE, PLUMBING, MECHANICAL, AND/OR ELECTRICAL. FOR ITEMS NOT SHOWN, CONTRACTOR SHALL WORK WITH THE ARCHITECT AND OWNER TO DETERMINE IF THE ITEM IS STILL IN USE. ITEMS WHICH ARE NOTED TO BE REMOVED AND STORED FOR LATER REINSTALLATION SHALL BE TAGGED AND LISTED ON AN ITEMIZED LIST GIVEN TO THE OWNER AND ARCHITECT.
 - CONTRACTOR SHALL ENSURE WATER-TIGHT INTEGRITY OF THE TEMPORARY ENCLOSURE SYSTEMS AND MAINTAIN THEM THROUGH THE ENTIRETY OF CONSTRUCTION TO PREVENT THE INTRUSION OF WATER AND THE ELEMENTS INTO THE BUILDING.
 - ALL EXISTING FIRE EXTINGUISHER AND BRACKETS SHALL BE PROTECTED AND STORED TO REMAIN AND BE INSTALLED IN THEIR CURRENT LOCATION UNLESS SHOWN ON THE PLANS TO RELOCATE. IF THE ORIGINAL LOCATION IS DEMOLISHED THE OWNER AND ARCHITECT SHALL ADVISE A NEW LOCATION.

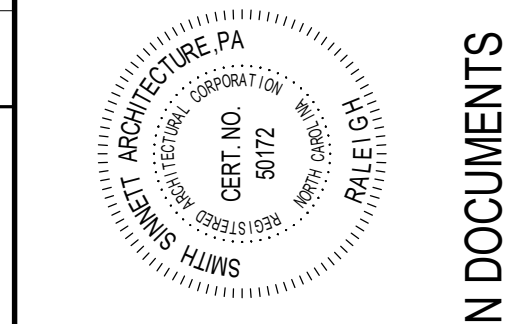
- DEMOLITION KEYNOTES:**
- REMOVE EXISTING WALL, FRAMING, AND ASSOCIATED PARTS IN ITS ENTIRETY. ASSOCIATED PARTS MAY INCLUDE BUT ARE NOT LIMITED TO DOOR, DOOR FRAME, HARDWARE, TRACK AND SUPPORTS. PREPARE SURROUNDING AREA TO RECEIVE NEW FINISH SPECIFIED OR IF NO FINISH IS SPECIFIED MATCH EXISTING. PATCH EXISTING ADJACENT SURFACES TO MATCH EXISTING FINISH AS NECESSARY.
 - REMOVE EXISTING WALL, FRAMING, AND ASSOCIATED PARTS TO EXTENTS SHOWN. PATCH AND REPAIR SURROUNDING WALL WITH NEW FINISH SPECIFIED OR IF NO FINISH IS SPECIFIED MATCH EXISTING.
 - REMOVE EXISTING WALL, TO THE EXTENTS OF NEW OPENING. COORDINATE WITH NEW DOOR SCHEDULE. PATCH AND REPAIR SURROUNDING WALL WITH NEW FINISH SPECIFIED OR IF NO FINISH IS SPECIFIED MATCH EXISTING.
 - REMOVE EXISTING DOOR, FRAME, TRANSOM (IF APPLICABLE) & HARDWARE IN ITS ENTIRETY. PREPARE SURROUNDING AREA TO RECEIVE NEW DOOR OR FINISH SPECIFIED. IF NONE IS SPECIFIED MATCH EXISTING FINISH.
 - REMOVE EXISTING DOOR, FRAME, TRANSOM (IF APPLICABLE) & HARDWARE IN ITS ENTIRETY. PREPARE SURROUNDING AREA TO RECEIVE INFILL TO MATCH EXISTING WITH NEW FINISHES AS SPECIFIED OR TO MATCH EXISTING.
 - REMOVE EXISTING WALL, BASE, CERAMIC TILE, CARPET, VCT AND/OR ANY OTHER FLOOR FINISH IN ITS ENTIRETY. PREPARE FLOORING TO RECEIVE NEW FINISHES PER SPECIFICATION AND THESE CONSTRUCTION DRAWINGS.
 - REMOVE EXISTING PLUMBING FIXTURES INCLUDING BUT NOT LIMITED TO WATER FOUNTAIN, TOILET PARTITIONS, SHOWERS, SINKS, TOILETS, AND URINALS AND ASSOCIATED PARTS IN THEIR ENTIRETY. REFER TO PLUMBING FOR COMPLETE SCOPE OF PLUMBING DEMOLITION. CAP ALL UTILITIES BELOW SLAB. PATCH AND REPAIR SLAB AS NECESSARY. FILL ANY PENETRATIONS FROM PLUMBING PIPES IN THE SLAB.
 - REMOVE EXISTING CONCRETE FLOOR SLAB. PREP AREA TO RECEIVE NEW CONCRETE SLAB. COORDINATE FINAL LOCATION OF CUT WITH STRUCTURAL, PLUMBING, AND ELECTRICAL AND OTHER TRADES AS REQUIRED. CUT SHOWN IS DIAGRAMMATIC. CONTRACTOR SHALL CUT AS REQUIRED FOR NEW WORK SHOWN. COORDINATE WITH ALL TRADES FOR COMPLETE SIZE, LOCATION, AND EXTENTS OF SLAB CUTS.
 - REMOVE EXISTING WINDOW, GLAZING, BLINDS, FRAME, TRANSACTION COUNTERS AND ASSOCIATED PARTS IN THEIR ENTIRETY. VERIFY SIZE IN FIELD. PREP SURROUNDING AREA TO RECEIVE INFILL TO MATCH EXISTING WITH NEW FINISHES AS SPECIFIED OR TO MATCH EXISTING.
 - REMOVE EXISTING LAY-IN CEILING TILE, GRID, HANGERS AND ASSOCIATED PARTS IN ITS ENTIRETY. PREP AREA TO RECEIVE NEW CEILING.
 - REMOVE EXISTING GYP CEILING, FRAMING, HANGERS AND ASSOCIATED PARTS IN ITS ENTIRETY. PREP AREA TO RECEIVE NEW CEILING.
 - REMOVE EXISTING LIGHT FIXTURES AND MECHANICAL DIFFUSERS. REPLACE WITH NEW LIGHT FIXTURES AND MECHANICAL DIFFUSERS PER DRAWINGS. REFER TO ELECTRICAL AND MECHANICAL FOR COMPLETE SCOPE OF DEMOLITION. REFER TO GENERAL DEMO NOTES FOR REQUIREMENTS ON BULB AND BALLAST DISPOSAL.
 - REMOVE EXISTING WOODEN PLATFORM AND ALL ASSOCIATED PARTS. PREPARE SLAB TO RECEIVE NEW FINISH SPECIFIED.
 - REMOVE EXISTING MECHANICAL EQUIPMENT AND ASSOCIATED PARTS IN THEIR ENTIRETY. COMPONENTS TO BE REMOVED INCLUDE BUT ARE NOT LIMITED TO ROOFTOP UNITS, DUCTWORK, PIPING, AND ASSOCIATED PARTS.
 - REMOVE FIRE EXTINGUISHER AND BRACKET OR CABINET AND ALL ASSOCIATED PARTS. PROTECT AND STORE UNLESS OWNER DIRECTED TO DISCARD. PATCH WALL AS NECESSARY.
 - REMOVE EXISTING CASEWORK, COUNTER, CABINETS, SHELF, OR WALL HUNG COUNTER. PATCH AND REPAIR ADJACENT SURFACES AS REQUIRED.
 - REMOVE EXISTING TOILET ACCESSORIES AS INDICATED. PATCH AND REPAIR ADJACENT SURFACES AS REQUIRED.



1 LOWER LEVEL DEMOLITION PLAN
A9-01
 1/8" = 1'-0"

smith sinnett
 ARCHITECTURE

T 919 781 8582
 F 919 781 3979
 4600 Lake Boone Trail
 Suite 205
 Raleigh, NC 27607
 info@smithsinnett.com



This drawing and the design shown is the property of Smith Sinnett Architecture, P.A. The reproduction or use of this drawing without the written consent of the architect is prohibited. This drawing is a legal action. All copies of this drawing must be returned to the Architect at the completion of the contract.
 Smith Sinnett Architecture, P.A. 2023
 THIS DRAWING IS FORMATTED TO BE PRINTED ON A 24" X 36" SHEET

RANDOLPH COUNTY
NORTHWEST HUMAN SERVICES CENTER
215 BALFOUR DRIVE, ARCHDALE, NC 27263

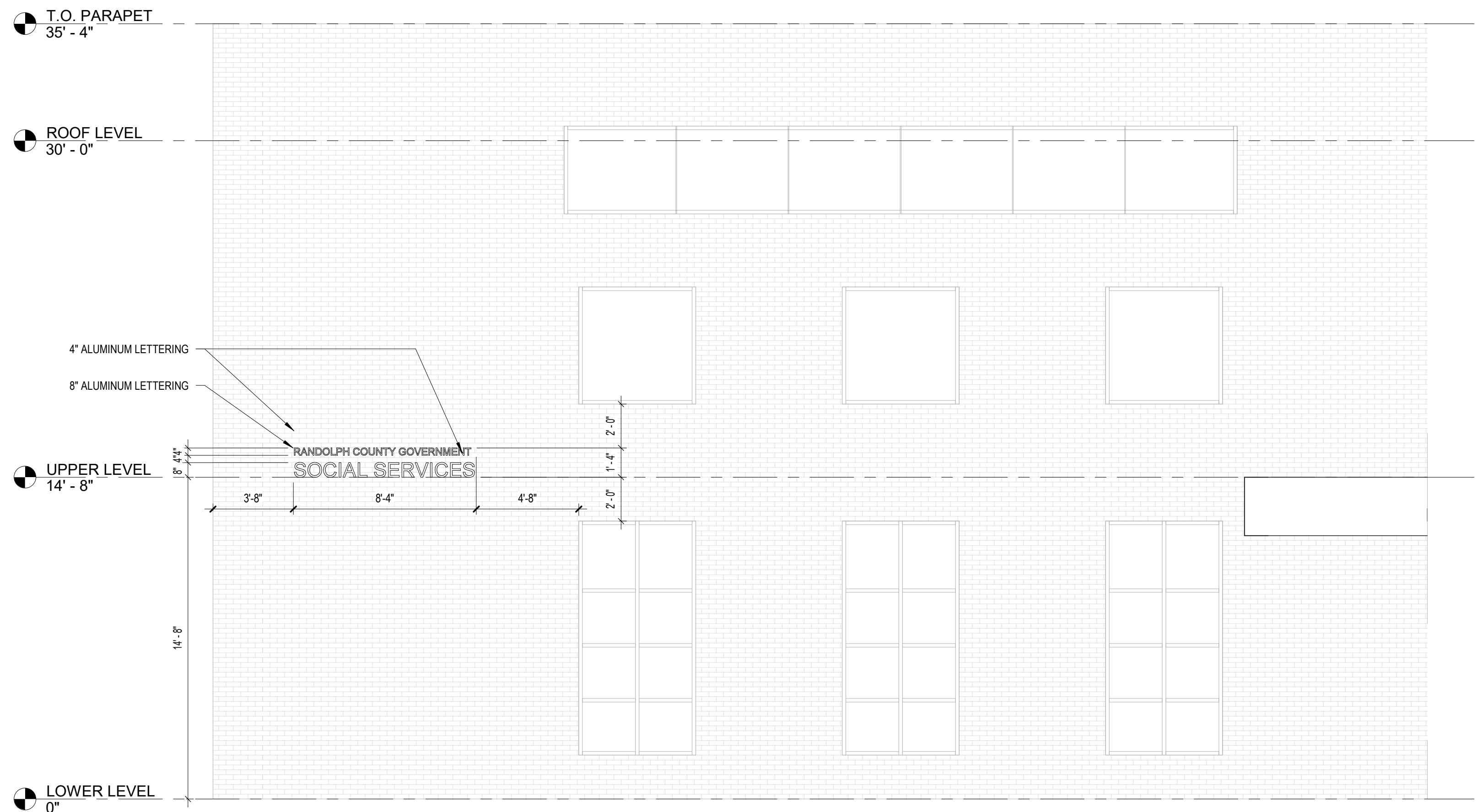
B	DATE	DESCRIPTION
07/10/2023	ADDENDUM 2	

DRAWN BY: _____ LB
 CHECKED BY: _____ RC

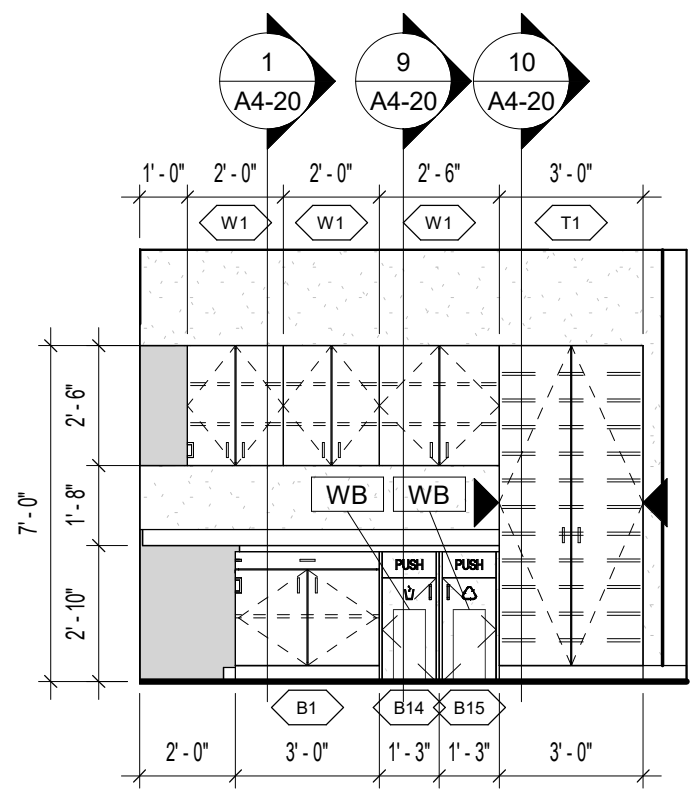
ALT 2 - LOWER LEVEL DEMOLITION PLAN

C:\Users\janne\Documents\2022036_Randolph County Northwest HSC_R22_byds\smithsinnett.rvt
 7/6/2023 1:53:10 PM

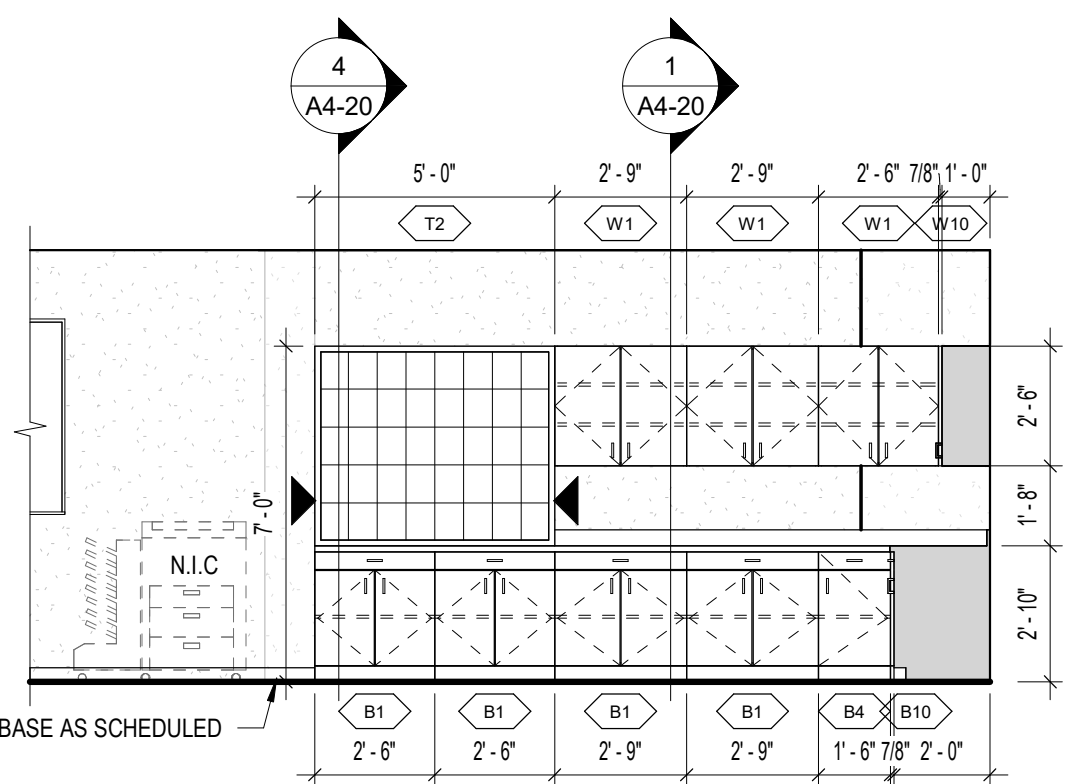
CONSTRUCTION DOCUMENTS



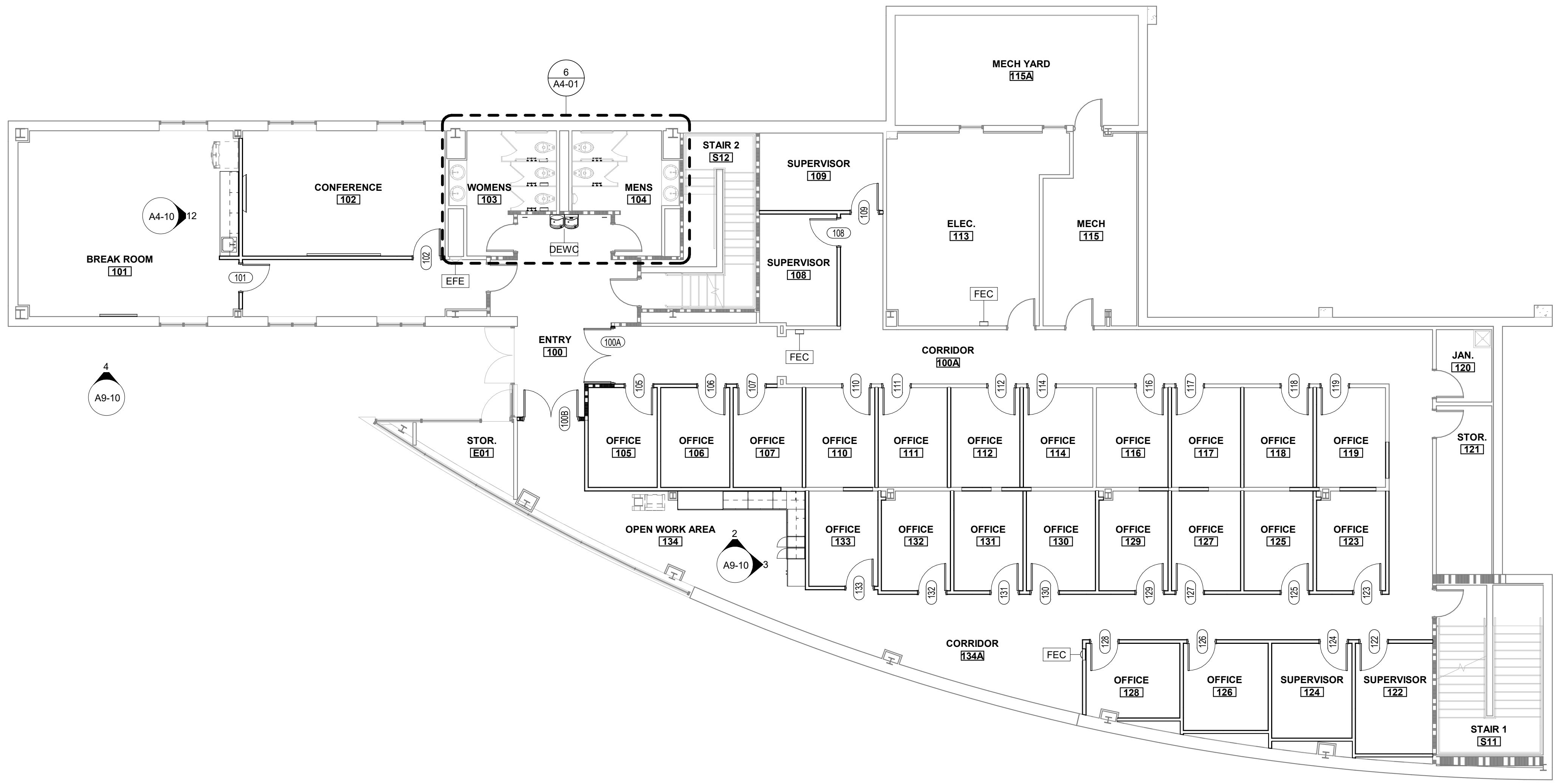
4 ALT 2 - EXTERIOR SIGNAGE ELEVATION
 A9-10 1/4" = 1'-0"



3 WORK AREA 134 - E
 A9-10 1/4" = 1'-0"



2 WORK AREA 134 - N
 A9-10 1/4" = 1'-0"



1 LOWER LEVEL ANNOTATION PLAN
 A9-10 1/8" = 1'-0"

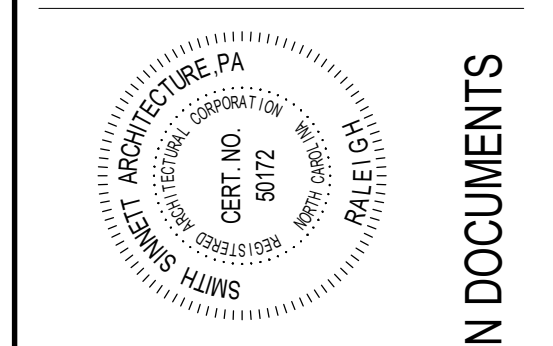
NEW WORK LEGEND:	
SYMBOL	DESCRIPTION
	EXISTING TO REMAIN
	EXISTING TO BE REMOVED DURING DEMOLITION

NOTES:

- ALL INTERIOR WALL TYPES TO BE 'SAPA' UNLESS OTHERWISE NOTED.
- WALL DIMENSIONS ARE TO FACE OF EXISTING, FACE OF METAL STUD, FACE OF CONCRETE MASONRY UNIT (CMU), OR CENTERLINE OF COLUMN.
- ALL RATED WALL CONSTRUCTION TO COMPLY WITH UL REQUIREMENTS.
- ALL METAL STUD WALLS TERMINATING AT BOTTOM OF DECK ARE TO PROVIDE A DEFLECTION TRACK SECURED TO THE UNDERSIDE OF THE DECKING, NEST TOP TRACK BUT DO NOT ATTACH TO DEFLECTION TRACK. FILL FLUTE IN METAL DECK WHERE REQUIRED.
- ALL WALLS EXTEND TO DECK AND ARE BRACED TO DECK AT HEAD ON ALTERNATE STUDS OR 32" OC FOR CMU WALLS, UNLESS OTHERWISE NOTED.
- CONTROL JOINTS SHALL BE AS SHOWN ON PLANS AND ELEVATIONS OR SPACED AT A MINIMUM OF 20'-0" OC AND A MAXIMUM OF 32'-0" OC WITH ONE CONTROL JOINT LOCATED WITHIN 3'-4" OF ANY CORNER. FOR INTERIOR GYPSUM WALL CONTROL JOINTS SEE DETAIL.
- SEE FINISH SCHEDULE FOR WALL, FLOOR, BASE, AND CEILING TYPES AND FINISHES.
- ALL COLUMN CHASES TO HAVE GYP BOARD ON ROOM SIDE OF WALL, TYPICAL UNLESS OTHERWISE NOTED.
- FURNITURE AND EQUIPMENT SHOWN DASHED ON PLANS IS NOT IN CONTRACT (NIC). GC TO PROVIDE WOOD BLOCKING FOR ALL WALL/CEILING MOUNTED ACCESSORIES.
- FIELD VERIFY FINAL ROOM DIMENSIONS PRIOR TO CASEWORK FABRICATION.
- WARP SLAB DOWN 1" IN A 2'-0"x2'-0" SQUARE AROUND ALL FLOOR DRAINS.
- ALL CERAMIC TILE TO HAVE CONTROL JOINTS THAT ALIGN WITH CONTROL JOINTS IN CONCRETE SLAB.
- THERE SHALL BE NO PENETRATIONS IN THROUGH WALL FLASHING.
- DOOR JAMB FROM INTERSECTING STUD WALLS = 4" UNLESS OTHERWISE NOTED.



T 919 781 8592
 F 919 781 3979
 4600 Lake Boone Trail
 Suite 205
 Raleigh, NC 27607
 info@smithsinnett.com



This drawing and the design shown is the property of Smith Sinnett Architecture, P.A. The reproduction or use of this drawing without the written consent of the architect is prohibited. All copies of this drawing must be returned to the Architect at the completion of the contract.
 Smith Sinnett Architecture, P.A. 2023
 THIS DRAWING IS FORMATTED TO BE PRINTED ON A 24" X 36" SHEET

RANDOLPH COUNTY
NORTHWEST HUMAN SERVICES CENTER
215 BALFOUR DRIVE, ARCHDALE, NC 27263

B	DATE	DESCRIPTION
07/10/2023	ADDENDUM 2	

DRAWN BY: LB
 CHECKED BY: RC
ALT 2 - LOWER LVL ANNOTATION PLAN AND ELEVATIONS

2022036 10 JULY 2023

A9-10

C:\Users\janne\Documents\2022036_Randolph County Northwest HSC_R22_byds\smithsinnett.rvt 7/6/2023 1:53:11 PM