



Terry McKee, IT & Procurement Director

901 N. Broadway • Knoxville, TN 37917-6699
 865.403.1133 • Fax 865.594.8858
 purchasinginfo@kcdc.org
 www.kcdc.org

Addendum

Solicitation Name	Alterations at Isabella Towers C20014	Addendum Number	2	Date	11/27/19
--------------------------	---------------------------------------	------------------------	---	-------------	----------

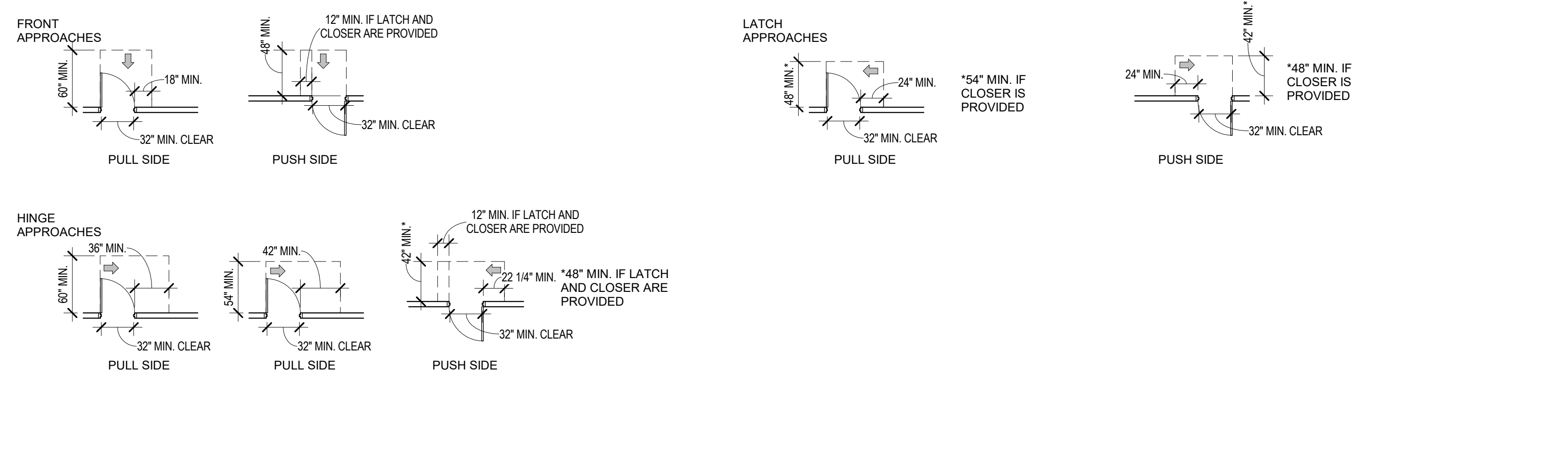
This addendum answers questions raised about this solicitation. To aid in readability, the questions are in black, the answers are in **bolded blue**, and the answers follow immediately below.

Q1	Being the new entrance doors & frames for Love and Isabella Towers are [20 mi fire-rated], you may want to check and see if they need any of the following to achieve the 20 mi fire-rating: smoke seal, threshold and door sweep
	Please refer to the revised Door Hardware Specifications and revised Drawing A6.1 included in this addendum.
Q2	The passage set and deadbolt as they are going on a fire-rated door, I would think they need to be fire-rated.
	Please refer to the revised Door Hardware Specifications and revised Drawing A6.1 included in this addendum.
Q3	Being they are going on ADA units, so they stay closed, you may want to consider putting either [2] spring hinges or a closer on each door.
	The supplier will use spring hinges.
Q4	Can the bid date be extended to Tuesday 12/10/19 due to material pricing delays with the holidays?
	Unfortunately KCDC cannot extend the deadline.
Q5	Please confirm if all testing and remediation of hazardous materials will be by the owner.
	Any necessary abatement will be supplier's responsibility.
Q6	Provide the color and specifications for the pre-finished metal backsplash located behind the range.
	Please refer to the note on Sheet A8.2.
Q7	Please clarify if all furniture will be removed and relocated by the owner or contractor.
	All apartments will be vacant and empty. Any furniture in the social hall can be moved to one side of the room then relocated to the other side. This will be the supplier's responsibility
Q8	Will using wire pulls on all doors in lieu of 'beveled/recessed finger pull' top edge be acceptable? Beveled top edge on stained veneer slab doors is not readily available in economy grade factory cabinets.
	No. Wire pulls are only acceptable in the ADA units. Beveled/recessed finger pull top edge shall be provided elsewhere throughout the project.
Q9	Would using plastic laminate faced doors/casework (similar to existing w/ beveled top edge) in lieu of stained wood veneer doors/casework be acceptable?
	No.

Q10	Please confirm that the kitchen countertop edge is to be PVC edge banded as noted in the cabinet sections. Existing tops are post-formed units with integral back splashes.
-----	---

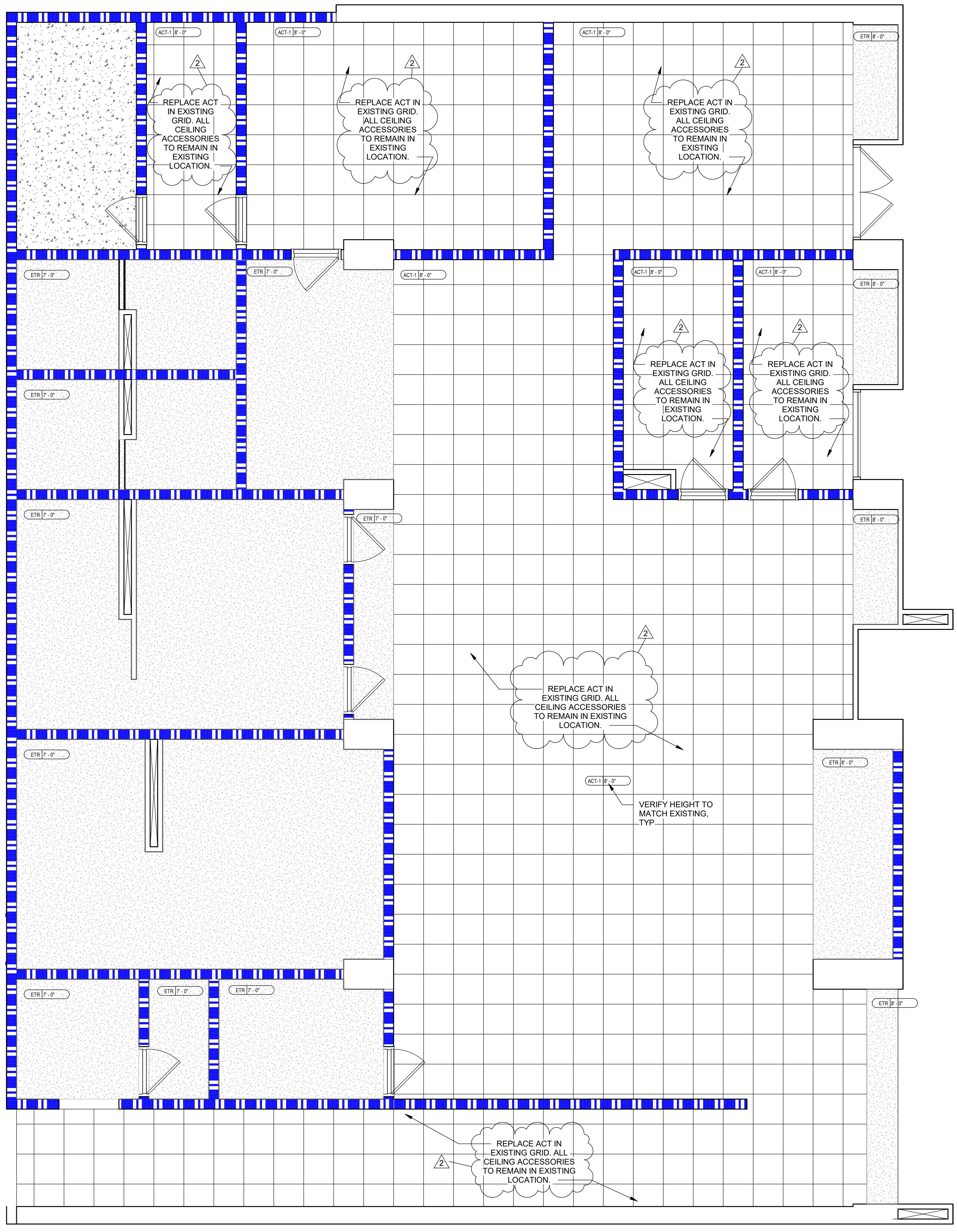


	The kitchen countertop is to be PVC edge banded with integral end and back splashes as specified.
Q11	The LVP is not a stateside stocked product, are they wanting a stateside product due to lead times?
	According to supplier that installed the previous flooring, it is readily available
Q12	Maybe you don't want Peep-Sites but usually doors for ADA units have 2 Peep-Sites, one at 60" above FF and one lower.
	KCDC wants 2 peep holes per door in ADA units



Door Number	Door		Frames			Details			Room Number	Fire Rating				
	Width	Thickness	Door Material	Door Type	Leaves	Rough Opening Size	Frame Material	Frame Type			Head	Jamb	Sill	Hardware Set #
118A	3'-0"	0'-1 3/4"	Wood	1	1	3'-4"	H.M.	1	5/A6.1	4/A6.1	1/A6.1	3	118	20 MIN.
118B	3'-0"	0'-1 3/4"	Wood	2	1	3'-4"	H.M.	2	7/A6.1	7/A6.1	1/A6.1	2	118	
119A	3'-0"	0'-1 3/4"	Wood	1	1	3'-4"	H.M.	1	5/A6.1	4/A6.1	1/A6.1	3	119	20 MIN.
119B	3'-0"	0'-1 3/4"	Wood	2	1	3'-4"	H.M.	2	7/A6.1	7/A6.1	1/A6.1	2	119	
139	3'-0"	0'-1 3/4"	Wood	2	1	3'-4"	H.M.	2	7/A6.1	7/A6.1	1/A6.1	2	139	
140	3'-0"	0'-1 3/4"	Wood	2	1	3'-4"	H.M.	2	7/A6.1	7/A6.1	1/A6.1	2	140	
141	3'-0"	0'-1 3/4"	Wood	2	1	3'-4"	H.M.	2	5/A6.1	4/A6.1	1/A6.1	2	141	
142	3'-0"	0'-1 3/4"	Wood	2	1	3'-4"	H.M.	2	5/A6.1	4/A6.1	1/A6.1	2	142	
218A	3'-0"	0'-1 3/4"	Wood	1	1	3'-4"	H.M.	1	5/A6.1	4/A6.1	1/A6.1	3	218	20 MIN.
218B	3'-0"	0'-1 3/4"	Wood	2	1	3'-4"	H.M.	2	7/A6.1	7/A6.1	1/A6.1	2	218	
219A	3'-0"	0'-1 3/4"	Wood	1	1	3'-4"	H.M.	1	5/A6.1	4/A6.1	1/A6.1	3	219	20 MIN.
219B	3'-0"	0'-1 3/4"	Wood	2	1	3'-4"	H.M.	2	7/A6.1	7/A6.1	1/A6.1	2	219	
318A	3'-0"	0'-1 3/4"	Wood	1	1	3'-4"	H.M.	1	5/A6.1	4/A6.1	1/A6.1	3	318	20 MIN.
318B	3'-0"	0'-1 3/4"	Wood	2	1	3'-4"	H.M.	2	7/A6.1	7/A6.1	1/A6.1	2	318	
319A	3'-0"	0'-1 3/4"	Wood	1	1	3'-4"	H.M.	1	5/A6.1	4/A6.1	1/A6.1	3	319	20 MIN.
319B	3'-0"	0'-1 3/4"	Wood	2	1	3'-4"	H.M.	2	7/A6.1	7/A6.1	1/A6.1	2	319	
418A	3'-0"	0'-1 3/4"	Wood	1	1	3'-4"	H.M.	1	5/A6.1	4/A6.1	1/A6.1	3	418	20 MIN.
418B	3'-0"	0'-1 3/4"	Wood	2	1	3'-4"	H.M.	2	7/A6.1	7/A6.1	1/A6.1	2	418	
419A	3'-0"	0'-1 3/4"	Wood	1	1	3'-4"	H.M.	1	5/A6.1	4/A6.1	1/A6.1	3	419	20 MIN.
419B	3'-0"	0'-1 3/4"	Wood	2	1	3'-4"	H.M.	2	7/A6.1	7/A6.1	1/A6.1	2	419	
518A	3'-0"	0'-1 3/4"	Wood	1	1	3'-4"	H.M.	1	5/A6.1	4/A6.1	1/A6.1	3	518	20 MIN.
518B	3'-0"	0'-1 3/4"	Wood	2	1	3'-4"	H.M.	2	7/A6.1	7/A6.1	1/A6.1	2	518	
519A	3'-0"	0'-1 3/4"	Wood	1	1	3'-4"	H.M.	1	5/A6.1	4/A6.1	1/A6.1	3	519	20 MIN.
519B	3'-0"	0'-1 3/4"	Wood	2	1	3'-4"	H.M.	2	7/A6.1	7/A6.1	1/A6.1	2	519	
618A	3'-0"	0'-1 3/4"	Wood	1	1	3'-4"	H.M.	1	5/A6.1	4/A6.1	1/A6.1	3	618	20 MIN.
618B	3'-0"	0'-1 3/4"	Wood	2	1	3'-4"	H.M.	2	7/A6.1	7/A6.1	1/A6.1	2	618	
619A	3'-0"	0'-1 3/4"	Wood	1	1	3'-4"	H.M.	1	5/A6.1	4/A6.1	1/A6.1	3	619	20 MIN.
619B	3'-0"	0'-1 3/4"	Wood	2	1	3'-4"	H.M.	2	7/A6.1	7/A6.1	1/A6.1	2	619	
718A	3'-0"	0'-1 3/4"	Wood	1	1	3'-4"	H.M.	1	5/A6.1	4/A6.1	1/A6.1	3	718	20 MIN.
718B	3'-0"	0'-1 3/4"	Wood	2	1	3'-4"	H.M.	2	7/A6.1	7/A6.1	1/A6.1	2	718	
719A	3'-0"	0'-1 3/4"	Wood	1	1	3'-4"	H.M.	1	5/A6.1	4/A6.1	1/A6.1	3	719	20 MIN.
719B	3'-0"	0'-1 3/4"	Wood	2	1	3'-4"	H.M.	2	7/A6.1	7/A6.1	1/A6.1	2	719	

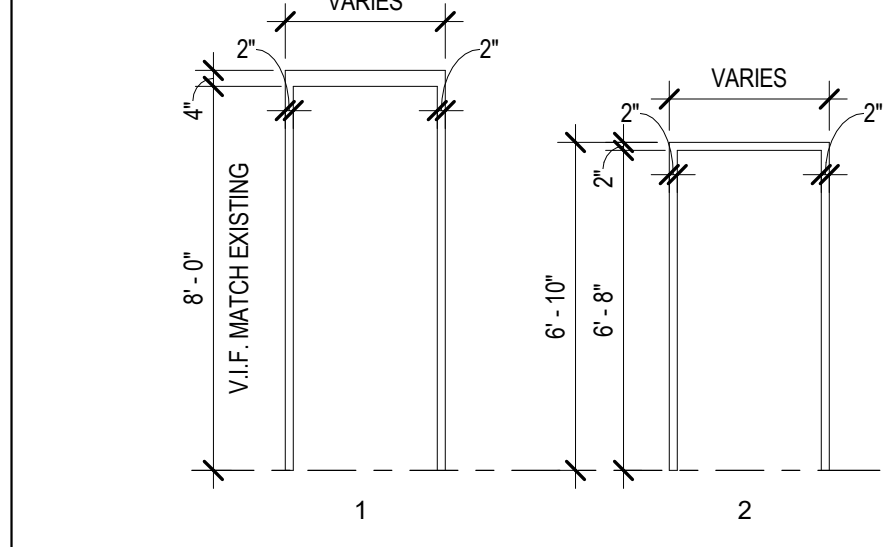
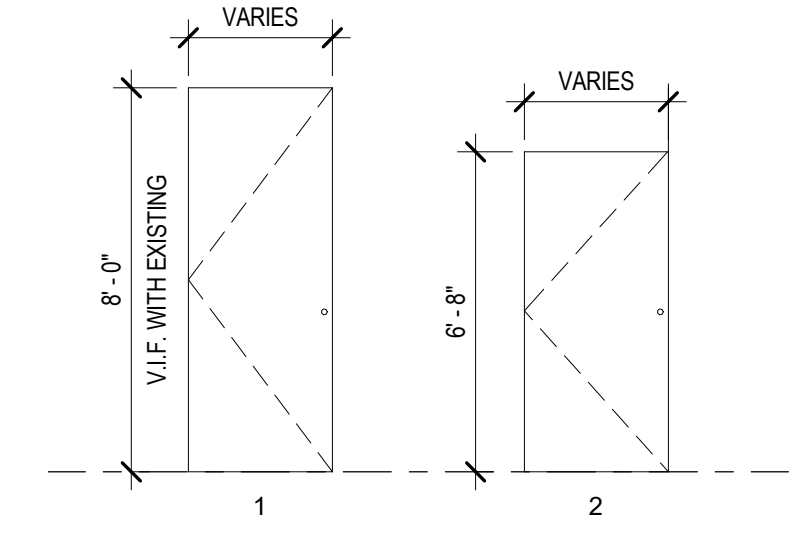
12 Access - Doorway Clearances
1/8" = 1'-0"



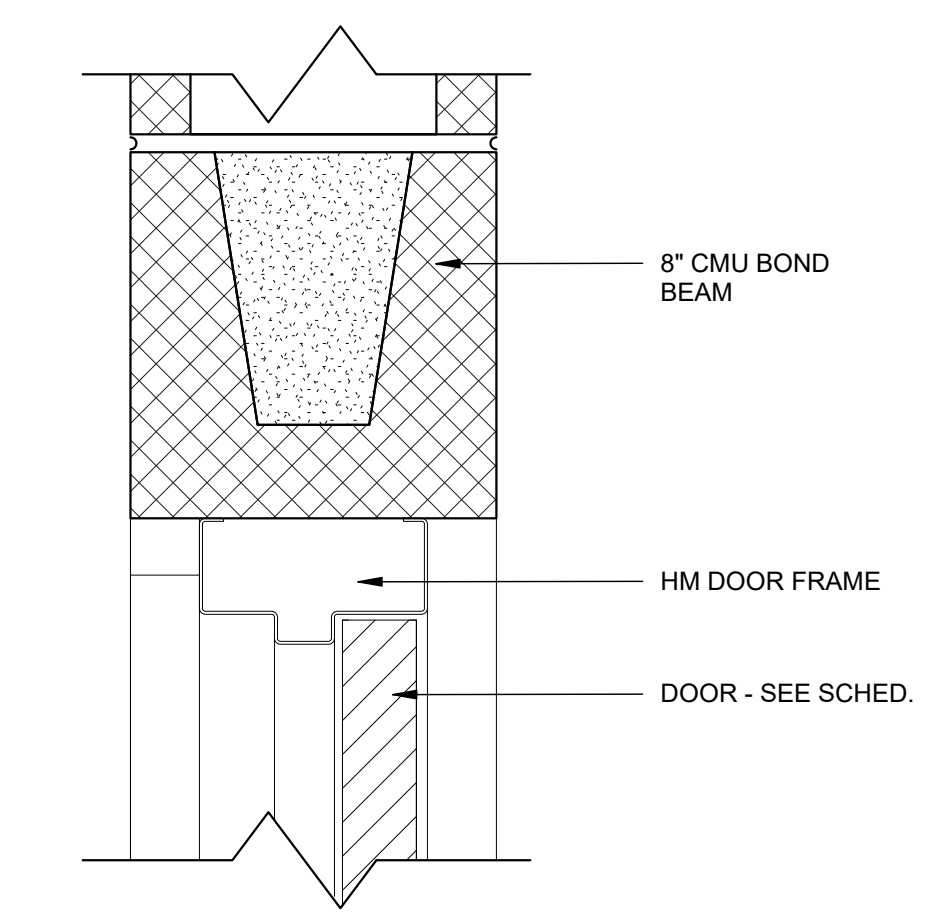
10 Door Schedule
NTS

- 1. DOOR HARDWARE SET #1 TO BE INSTALLED AT ALL EXISTING UNIT ENTRY DOORS. SEE DOOR HARDWARE SECTION 08 71 00 IN THE SPECIFICATIONS.
- 2. DOORS TO BE UNDERCUT AS REQUIRED.

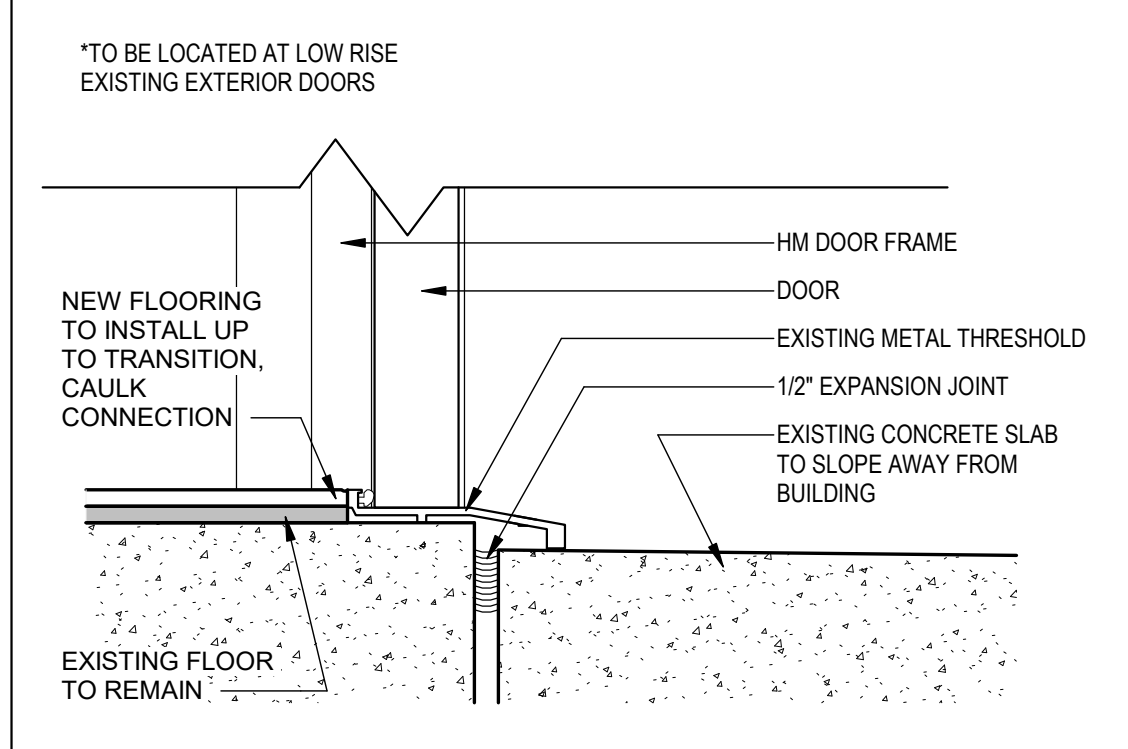
9 Door Hardware Note
NTS



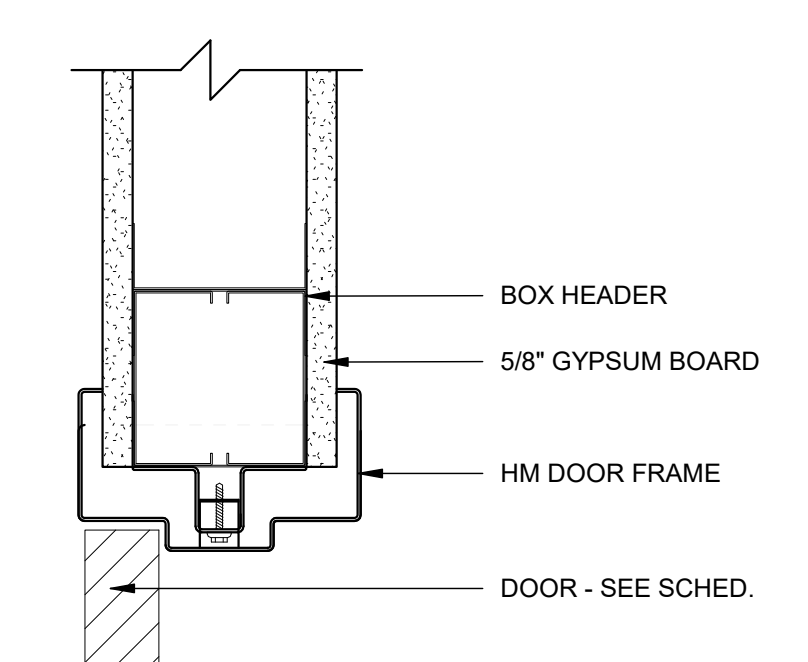
6 Door Type
1/4" = 1'-0"



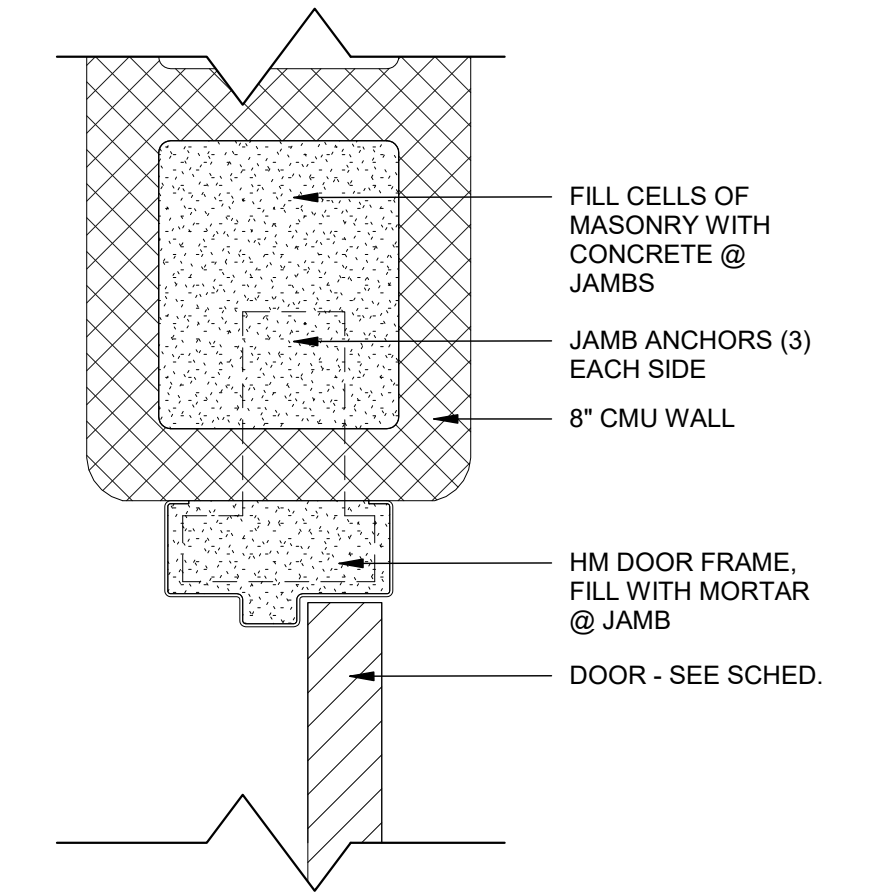
3 Door Frame
1/4" = 1'-0"



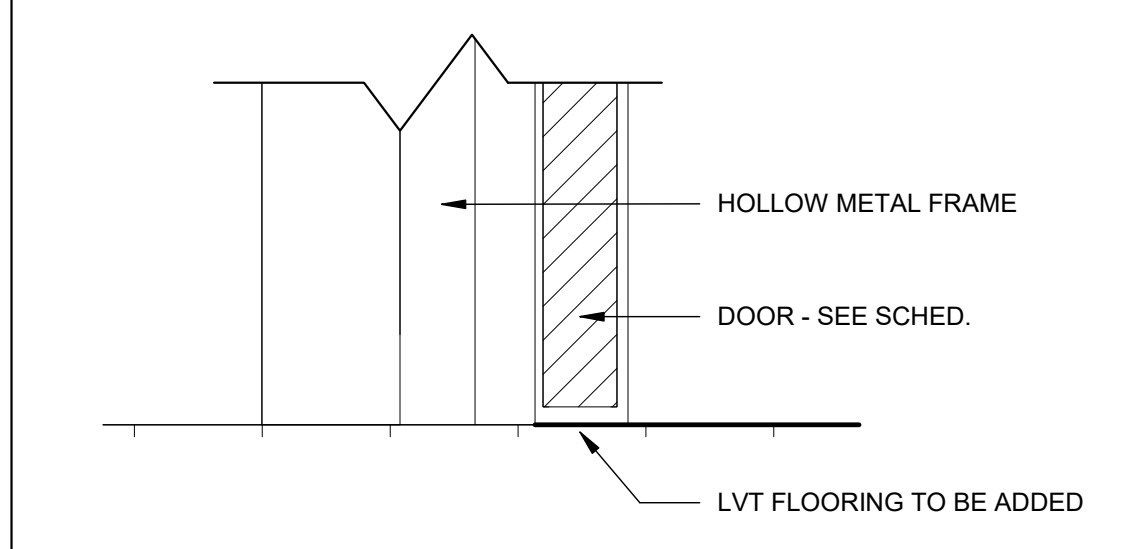
8 Not Used
NTS



5 Interior Door Head Detail @ CMU
3" = 1'-0"



2 HM Door Exterior/Interior Sill Detail - Typ.
3" = 1'-0"

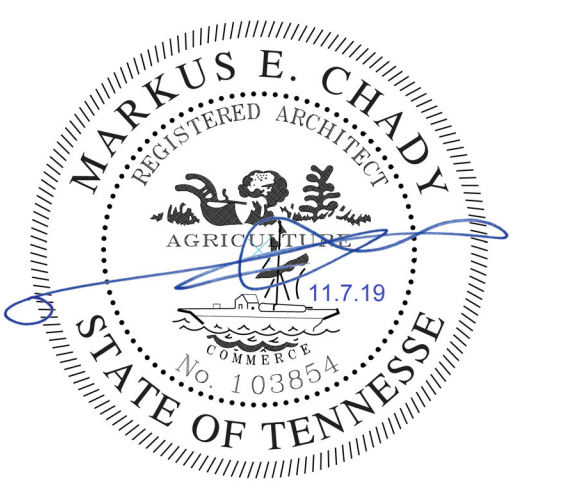


11 First Floor Common area
1/4" = 1'-0"

7 Interior WD Door Head / Jamb Detail @ GYP
3" = 1'-0"

4 Interior Door Jamb Detail @ CMU
3" = 1'-0"

1 Interior Door Sill Detail
3" = 1'-0"



Project Phase: Construction Documents

Revisions	
No.	Description
2	Addendum 03

Issue Date: 11.07.2019
Date: 12.02.2019

© 2019 STUDIO FOUR DESIGN, INC. This drawing is the property of Studio Four Design, Inc. and shall not be reproduced or used for any other project without the express written consent of Studio Four Design, Inc. This drawing is an instrument of service only and shall be returned to the Architect upon request.

REVISED SECTION 12 36 00 COUNTERTOPS

PART 1 GENERAL

1.01 SECTION INCLUDES

- A. Countertops for architectural cabinet work.
- B. Sinks molded into countertops.

1.02 RELATED REQUIREMENTS

- A. Section 06 41 00 - Architectural Wood Casework.
- B. Section 22 40 00 - Plumbing Fixtures: Sinks.

1.03 REFERENCE STANDARDS

- A. ANSI A208.1 - American National Standard for Particleboard; 2009.
- B. ANSI A208.2 - American National Standard for Medium Density Fiberboard for Interior Use; 2009.
- C. ASTM D635 - Standard Test Method for Rate of Burning and/or Extent and Time of Burning of Plastics in a Horizontal Position; 2018.
- D. ASTM E84 - Standard Test Method for Surface Burning Characteristics of Building Materials; 2018b.
- E. AWI/AWMAC/WI (AWS) - Architectural Woodwork Standards; 2014, with Errata (2018).
- F. AWMAC/WI (NAAWS) - North American Architectural Woodwork Standards, U.S. Version 3.1; 2016, with Errata (2018).
- G. IAPMO Z124 - Plastic Plumbing Fixtures; 2017.
- H. ISFA 2-01 - Classification and Standards for Solid Surfacing Material; 2013.
- I. NEMA LD 3 - High-Pressure Decorative Laminates; 2005.
- J. PS 1 - Structural Plywood; 2009.

1.04 SUBMITTALS

- A. See Section 01 30 00 - Administrative Requirements, for submittal procedures.
- B. Product Data: Manufacturer's data sheets on each product to be used, including:
 - 1. Preparation instructions and recommendations.
 - 2. Storage and handling requirements and recommendations.
 - 3. Specimen warranty.
- C. Shop Drawings: Complete details of materials and installation; combine with shop drawings of cabinets and casework specified in other sections.
- D. Selection Samples: For each finish product specified, color chips representing manufacturer's full range of available colors and patterns.
- E. Verification Samples: For each finish product specified, minimum size 6 inches (150 mm) square, representing actual product, color, and patterns.
- F. Test Reports: Chemical resistance testing, showing compliance with specified requirements.
- G. Installation Instructions: Manufacturer's installation instructions and recommendations.

- H. Maintenance Data: Manufacturer's instructions and recommendations for maintenance and repair of countertop surfaces.

1.05 QUALITY ASSURANCE

- A. Installer Qualifications: Company specializing in performing work of the type specified in this section, with not less than three years of documented experience.

1.06 DELIVERY, STORAGE, AND HANDLING

- A. Store products in manufacturer's unopened packaging until ready for installation.
- B. Store and dispose of solvent-based materials, and materials used with solvent-based materials, in accordance with requirements of local authorities having jurisdiction.

1.07 FIELD CONDITIONS

- A. Maintain environmental conditions (temperature, humidity, and ventilation) within limits recommended by manufacturer for optimum results. Do not install products under environmental conditions outside manufacturer's absolute limits.

PART 2 PRODUCTS

2.01 COUNTERTOPS

- A. Quality Standard: Economy Grade, in accordance with AWI/AWMAC/WI (AWS) or AWMAC/WI (NAAWS), unless noted otherwise.
- B. Plastic Laminate Countertops: High-pressure decorative laminate (HPDL) sheet bonded to substrate.
 - 1. Laminate Sheet, Type: NEMA LD 3, Grade HGS, 0.048 inch (1.2 mm) nominal thickness.
 - a. Surface Burning Characteristics: Flame spread index of 25, maximum; smoke developed index of 450, maximum; when tested in accordance with ASTM E84.
 - b. Wear Resistance: In addition to specified grade, comply with NEMA LD 3 High Wear Grade requirements for wear resistance.
 - c. Laminate Core Color: Same as decorative surface.
 - d. Finish: Matte or suede, gloss rating of 5 to 20.
 - e. Surface Color and Pattern: As selected by Architect from the manufacturer's full line.
 - 2. Exposed Edge Treatment: Molded rubber edge with T-spline, sized to completely cover edge of panel.
 - a. Color: As selected by Architect from the manufacturer's full line.
 - 3. Back and End Splashes: Same material, same construction, integral with top.
 - 4. Fabricate in accordance with manufacturer's standard requirements.
- C. Solid Surfacing Countertops: Solid surfacing sheet or plastic resin casting over continuous substrate.
 - 1. Flat Sheet Thickness: 1/2 inch (12 mm), minimum.
 - 2. Solid Surfacing Sheet and Plastic Resin Castings: Complying with ISFA 2-01 and NEMA LD 3; acrylic or polyester resin, mineral filler, and pigments; homogenous, non-porous and capable of being worked and repaired using standard woodworking tools; no surface coating; color and pattern consistent throughout thickness.
 - a. Manufacturers:
 - 1) Formica Corporation; www.formica.com/#sle.

- b. Surface Burning Characteristics: Flame spread index of 25, maximum; smoke developed index of 450, maximum; when tested in accordance with ASTM E84.
- c. Sinks and Bowls: Integral castings; minimum 3/4 inch (19 mm) wall thickness; comply with IAPMO Z124.
- d. Finish on Exposed Surfaces: Matte, gloss rating of 5 to 20.
- e. Color and Pattern: As selected by Architect from manufacturer's full line.
- 3. Other Components Thickness: 1/2 inch (12 mm), minimum.
- 4. Exposed Edge Treatment: Built up to minimum 1-1/4 inch (32 mm) thick; square edge; use marine edge at sinks.
- 5. Back and End Splashes: Same sheet material, square top; minimum 4 inches (102 mm) high.
- 6. Fabricate in accordance with manufacturer's standard requirements.

2.02 MATERIALS

- A. Plywood for Supporting Substrate: PS 1 Exterior Grade, A-C veneer grade, minimum 5-ply; minimum 3/4 inch (19 mm) thick; join lengths using metal splines.
- B. Adhesives: Chemical resistant waterproof adhesive as recommended by manufacturer of materials being joined.
- C. Joint Sealant: Mildew-resistant silicone sealant, white.

2.03 FABRICATION

- A. Fabricate tops and splashes in the largest sections practicable, with top surface of joints flush.
 - 1. Join lengths of tops using best method recommended by manufacturer.
 - 2. Fabricate to overhang fronts and ends of cabinets 1 inch (25 mm) except where top butts against cabinet or wall.
 - 3. Prepare all cutouts accurately to size; replace tops having improperly dimensioned or unnecessary cutouts or fixture holes.
- B. Provide back/end splash wherever counter edge abuts vertical surface unless otherwise indicated.
 - 1. Secure to countertop with concealed fasteners and with contact surfaces set in waterproof glue.
 - 2. Height: 4 inches (102 mm), unless otherwise indicated.
- C. Solid Surfacing: Fabricate tops and wall panels up to 144 inches (3657 mm) long in one piece; join pieces with adhesive sealant in accordance with manufacturer's recommendations and instructions.
 - 1. Integral sinks: Shop-mount securely to countertop with adhesives, using flush configuration, as per manufacturer's instructions, and as detailed on drawings.

PART 3 EXECUTION

3.01 EXAMINATION

- A. Do not begin installation until substrates have been properly prepared.
- B. If substrate preparation is the responsibility of another installer, notify Architect of unsatisfactory preparation before proceeding.

- C. Verify that wall surfaces have been finished and mechanical and electrical services and outlets are installed in proper locations.

3.02 PREPARATION

- A. Clean surfaces thoroughly prior to installation.
- B. Prepare surfaces using the methods recommended by the manufacturer for achieving the best result for the substrate under the project conditions.

3.03 INSTALLATION

- A. Securely attach countertops to cabinets using concealed fasteners. Make flat surfaces level; shim where required.
- B. Attach plastic laminate countertops using screws with minimum penetration into substrate board of 5/8 inch (16 mm).
- C. Seal joint between back/end splashes and vertical surfaces.

3.04 TOLERANCES

- A. Variation From Horizontal: 1/8 inch in 10 feet (3 mm in 3 m), maximum.
- B. Offset From Wall, Countertops: 1/8 inch (3 mm) maximum; 1/16 inch (1.5 mm) minimum.
- C. Field Joints: 1/8 inch (3 mm) wide, maximum.

3.05 CLEANING

- A. Clean countertops surfaces thoroughly.

3.06 PROTECTION

- A. Protect installed products until completion of project.
- B. Touch-up, repair or replace damaged products before Date of Substantial Completion.

END OF SECTION

Revised SECTION 08 71 00: DOOR HARDWARE

PART 1 GENERAL

1.01 SECTION INCLUDES

- A. Hardware for wood and hollow metal doors.
- B. Lock cylinders for doors that hardware is specified in other sections.

1.02 REFERENCE STANDARDS

- A. ADA Standards - Americans with Disabilities Act (ADA) Standards for Accessible Design; 2010.
- B. BHMA A156.2 - American National Standard for Bored and Preamsembled Locks & Latches; 2017.
- C. BHMA A156.5 - American National Standard for Cylinders and Input Devices for Locks; 2014.
- D. BHMA A156.18 - American National Standard for Materials and Finishes; 2016.
- E. DHI (KSN) - Keying Systems and Nomenclature; 1989.
- F. ICC A117.1 - Accessible and Usable Buildings and Facilities; 2017.

1.03 SUBMITTALS

- A. See Section 01 30 00 - Administrative Requirements, for submittal procedures.
- B. Product Data: Manufacturer's catalog literature for each type of hardware, marked to clearly show products to be furnished for this project, and includes construction details, material descriptions, finishes, and dimensions and profiles of individual components.
- C. Manufacturer's Installation Instructions: Indicate special procedures and perimeter conditions requiring special attention.
- D. Warranty: Submit manufacturer's warranty and ensure that forms have been completed in Owner's name and registered with manufacturer.
- E. Maintenance Materials and Tools: Furnish the following for Owner's use in maintenance of project.
 - 1. See Section 01 60 00 - Product Requirements, for additional provisions.

1.04 QUALITY ASSURANCE

- A. Installer Qualifications: Company specializing in performing work of the type specified for commercial door hardware with at least three years of documented experience.

1.05 DELIVERY, STORAGE, AND HANDLING

- A. Package hardware items individually; label and identify each package with door opening code to match door hardware schedule.

1.06 WARRANTY

- A. Warranty against defects in material and workmanship for period indicated, from Date of Substantial Completion.
 - 1. Locksets and Cylinders: Three years, minimum.

PART 2 PRODUCTS

2.01 HINGES

- 1). Hinges: BHMA A156.1.
 1. Manufacturers: Subject to compliance with requirements, provide products by one of the following:
 - a. Stanley Commercial Hardware; a division of Stanley Security Solutions.
 - b. H. B. Ives: an Allegion company.
 - c. Hager Companies.

2.02 DOOR LOCKS AND LEVERS

- 1). Manufacturers listed in the hardware specification are as follows:
 1. Locks and Deadbolts:
 - a. Manufacturer: Stanley or Pamex NO SUBSTITUTION
 - b. Substitutions: Model numbers and performance criteria for door hardware manufactured by Stanley and Pamex are listed to establish a standard of quality for design, function, materials, workmanship, and appearance. Specific materials and product manufacturer(s) are specified to maintain standard building finishes and materials across multiple facilities for ease of maintenance. Therefore KCDC will not entertain requests for substitute products for this item.
 - A. Cylindrical Locks: Meet or exceeds ANSI/BHMA A156.2 Series 4000, Grade 2. Locksets shall be capable of receiving 6 or 7 pin, Small Format Interchangeable Cores, (SFIC). Provide lock sets and latch sets with 2-3/4 inch backset unless otherwise determined from existing door preparations. Provide cylindrical lock sets and latch sets model "AL" series "Jupiter" (JUP) design levers manufactured by Stanley or Pamex.
 - B. Deadbolts: Meet or exceeds ANSI/BHMA A156.5. Deadbolts shall be capable of receiving 6 or 7 pin SFIC cores. Provide deadbolt locks with 2-3/4 inch backset unless otherwise indicated or determined from existing door preparations. Provide deadbolt locks, manufactured by Stanley or Pamex.
- 2). Locks shall be master keyed into new SFIC master key system. Supply 4 keys per lock, 4 master keys and 4 Control keys total. Unless otherwise indicated.
- 3). Finish: Lock sets, latch sets and deadbolt locks hardware shall be satin nickel finish (619).
- 4). Provide hardware and finishes used in any individual system from the same manufacturer; no exceptions.
- 5). Provide hardware sets as follows:

Hardware Set #1: each to have:

Existing hardware to remain except the following:

1	Lever Passage	Stanley QCL230E or Pamex Cambridge FL363
1	Deadlock	Stanley QDB281 or Pamex FD7PA

Hardware Set #2: each to have:

3	Butt Hinges	Stanley FBB179 4.5" x 4.5"
---	-------------	----------------------------

1	Lever Privacy	Stanley QCL240E or Pamex FL361C
2	Hinge pin stops	Don-Jo 1512 (top and middle hinges)
3	Silencers	Ives SR64

Hardware Set #3: each to have:

4	Butt Hinges	Stanley FBB179 4.5" x 4.5"
1	Lever Passage	Stanley QCL230E or Pamex Cambridge FL363
1	Door Closer	Falcon SC60A
1	Kick Plate	Hager 190S 8" x 2" LDW
1	Door Stop	Hager 236W
1	Set Smoke Seal	NGP 5050 x head and jambs

2.03 SURFACE CLOSERS

- A. Surface Closers: BHMA A 156.4; rack-and-pinion hydraulic type with adjustable sweep and latch speeds controlled by key-operated valves and forged-steel main arm. Comply with manufacturer's written recommendations for size of door closers depending on size of door, exposure to weather, and anticipated frequency of use. Provide factory-sized closers, adjustable to meet field conditions and requirements for opening force.
1. Manufacturers: Subject to compliance with requirements, provide products by one of the following:
 - a. Falcon; an Allegion company.
 - b. Stanley Commercial Hardware; a division of Stanley Security Solutions.
 - c. Hager Companies.

2.04 MECHANICAL STOPS AND HOLDERS

- A. Wall- and Floor-Mounted Stops: BHMA A156.16; polished cast brass, bronze, or aluminum base metal.
1. Manufacturers: Subject to compliance with requirements, provide products by one of the following:
 - a. Hager Companies.
 - b. H. B. Ives; an Allegion company.
 - c. Trimco.
- B. Hinge Pin Stops: Provide hinge pin stops, where floor or wall mounted stops are not feasible. Provide as scheduled.

2.05 DOOR GASKETING

- A. Door Gasketing: BHMA A156.22; air leakage not to exceed 0.50 cfm per foot of crack length for gasketing other than for smoke control, as tested according to ASTM E 283; with resilient or flexible seal strips that are easily replaceable and readily available from stocks maintained by manufacturer.
 - 1. Manufacturers: Subject to compliance with requirements, provide products by one of the following:
 - a. National Guard Products, Inc.
 - b. Pemko Manufacturing Co.
 - c. Reese Enterprises, Inc.
 - d. Zero International, Inc.

2.06 FINISHES

- A. Finishes: Provide door hardware of same finish, unless otherwise indicated.
 - 1. Primary Finish: Satin nickel (619).

2.07 KEYING MACHINE

- A. Provide a Key Punch Pro-Lok by the lock and deadbolt manufacturer.

PART 3 EXECUTION

3.01 EXAMINATION

- A. Verify that doors and frames are ready to receive this work; labeled, fire-rated doors and frames are properly installed, and dimensions are as indicated on shop drawings.

3.02 INSTALLATION

- A. Install hardware in accordance with manufacturer's instructions and applicable codes.

3.03 ADJUSTING

- A. Adjust hardware for smooth operation.

3.04 CLEANING

- A. Clean finished hardware in accordance with manufacturer's written instructions after final adjustments have been made.
- B. Clean adjacent surfaces soiled by hardware installation.

3.05 PROTECTION

- A. Do not permit adjacent work to damage hardware or finish.

END OF SECTION

REVISED SECTION 06 41 00
ARCHITECTURAL WOOD CASEWORK

PART 1 GENERAL

1.01 SECTION INCLUDES

- A. Specially fabricated cabinet units.
- B. Hardware.

1.02 RELATED REQUIREMENTS

- A. Section 09 91 23 - Interior Painting: Field finishing of cabinet exterior.
- B. Section 12 36 00 - Countertops.

1.03 REFERENCE STANDARDS

- A. AWI/AWMAC/WI (AWS) - Architectural Woodwork Standards; 2014, with Errata (2018).
- B. AWMAC/WI (NAAWS) - North American Architectural Woodwork Standards, U.S. Version 3.1; 2016, with Errata (2018).
- C. BHMA A156.9 - American National Standard for Cabinet Hardware; 2015.
- D. HPVA HP-1 - American National Standard for Hardwood and Decorative Plywood; 2016.
- E. NEMA LD 3 - High-Pressure Decorative Laminates; 2005.

1.04 SUBMITTALS

- A. See Section 01 30 00 - Administrative Requirements, for submittal procedures.
- B. Shop Drawings: Indicate materials, component profiles, fastening methods, jointing details, and accessories.
 - 1. Scale of Drawings: 1-1/2 inch to 1 foot (125 mm to 1 m), minimum.
 - 2. Provide the information required by AWI/AWMAC/WI (AWS) or AWMAC/WI (NAAWS).
- C. Product Data: Provide data for hardware accessories.
- D. Samples: Submit actual samples of architectural cabinet construction, minimum 12 inches (300 mm) square, illustrating proposed cabinet, countertop, and shelf unit substrate and finish.
- E. Samples: Submit actual sample items of proposed pulls, hinges, shelf standards, and locksets, demonstrating hardware design, quality, and finish.

1.05 QUALITY ASSURANCE

- A. Fabricator Qualifications: Company specializing in fabricating the products specified in this section with minimum five years of documented experience.
 - 1. Company with at least one project in the past 5 years with value of woodwork within 20 percent of cost of woodwork for this Project.
 - 2. Single Source Responsibility: Provide and install this work from single fabricator.

1.06 DELIVERY, STORAGE, AND HANDLING

- A. Protect units from moisture damage.

1.07 FIELD CONDITIONS

- A. During and after installation of custom cabinets, maintain temperature and humidity conditions in building spaces at same levels planned for occupancy.

PART 2 PRODUCTS

2.01 CABINETS

- A. Quality Standard: Economy Grade, in accordance with AWI/AWMAC/WI (AWS) or AWMAC/WI (NAAWS), unless noted otherwise.
- B. Wood Cabinet – All Plywood Construction:
 - 1. Exposed Surfaces: HPVA HP-1 Grade A, Birch, plain sliced, random-matched.
 - 2. Semi-Exposed Surfaces: HPVA HP-1 Grade B, Birch, plain sliced, random-matched.
 - 3. Concealed Surfaces: Manufacturer's option.
- C. Cabinets:
 - 1. Finish - Exposed Exterior Surfaces: Wood.
 - 2. Finish - Exposed Interior Surfaces: Wood.
 - 3. Finish - Semi-Exposed Surfaces: Wood
 - 4. Finish - Concealed Surfaces: Manufacturer's option.
 - 5. Door and Drawer Front Edge Profiles: Square edge with thin applied band.
 - 6. Door and Drawer Front Retention Profiles: Fixed panel.
 - 7. Casework Construction Type: Type A - Frameless.
 - 8. Interface Style for Cabinet and Door: Style 2 - Finish Inset; reveal overlay.
 - 9. Grained Face Layout for Cabinet and Door Fronts: Style and Rail, all Grades.
 - a. Drawer fronts run grain either vertically or horizontally at the manufacturer's option.
 - b. Doors: Vertical grain.
 - 10. Grained Face Layout for Cabinet and Door Fronts: Flush panel.
 - a. Economy Grade: Drawer fronts run grain either vertically or horizontally at the manufacturer's option. Doors shall be vertical. Mismatch allowed.
 - 11. Adjustable Shelf Loading: 50 lbs. per sq. ft.
 - a. Deflection: L/144.
 - 12. Cabinet Style: Flush overlay.
 - 13. Cabinet Doors and Drawer Fronts: Flush style.
 - 14. Drawer Side Construction: Multiple-dovetailed.
 - 15. Drawer Construction Technique: Dovetail joints.

2.02 WOOD-BASED COMPONENTS

- A. Wood fabricated from old growth timber is not permitted.

2.03 COUNTERTOPS

- A. Countertops are specified in Section 12 36 00.

2.04 ACCESSORIES

- A. Adhesive: Type recommended by fabricator to suit application.
 - 1. Manufacturers:
 - a. Franklin International, Inc; Titebond Original Wood Glue: www.titebond.com/#sle.
 - b. Substitutions: See Section 01 60 00 - Product Requirements.
- B. Fasteners: Size and type to suit application.
- C. Bolts, Nuts, Washers, Lags, Pins, and Screws: Of size and type to suit application; galvanized or chrome-plated finish in concealed locations and stainless steel or chrome-plated finish in exposed locations.

- D. Concealed Joint Fasteners: Threaded steel.
- E. Grommets: Standard plastic, painted metal, or rubber grommets for cut-outs, in color to match adjacent surface.

2.05 HARDWARE

- A. Hardware: BHMA A156.9, types as recommended by fabricator for quality grade specified.
- B. Drawer and Door Pulls: "U" shaped wire pull, steel with chrome finish, 4 inch centers ("U" shaped wire pull, steel with chrome finish, 100 mm centers).
- C. Drawer Slides:
 - 1. Type: Extension types as indicated.
 - 2. Static Load Capacity: Residential/Light Commercial grade.
 - 3. Mounting: Side mounted.
 - 4. Stops: Integral type.
 - 5. Features: Provide self closing/stay closed type.
- D. Drawer Systems: Integrated drawer slide and side.
 - 1. Side Type: Single Wall.
 - 2. Drawer Side Height: 3-1/2 inches (90 mm).
 - 3. Drawer Length: 16 inch (400 mm).
 - 4. Extension Type: Extension types as indicated.
 - 5. Static Load Capacity: Residential/Light Commercial grade.
 - 6. Mounting: Side mounted.
 - 7. Stops: Integral type.
 - 8. Features: Provide self closing/stay closed and white epoxy finish type.
- E. Hinges: European style concealed self-closing type, steel with polished finish.

2.06 SITE FINISHING MATERIALS

- A. Stain, Shellac, Varnish, and Finishing Materials: In compliance with AWI/AWMAC/WI (AWS) or AWMAC/WI (NAAWS), unless noted otherwise.

2.07 FABRICATION

- A. Assembly: Shop assemble cabinets for delivery to site in units easily handled and to permit passage through building openings.
- B. Edging: Fit shelves, doors, and exposed edges with specified edging. Do not use more than one piece for any single length.
- C. Fitting: When necessary to cut and fit on site, provide materials with ample allowance for cutting. Provide matching trim for scribing and site cutting.

2.08 SHOP FINISHING

- A. Sand work smooth and set exposed nails and screws.
- B. For opaque finishes, apply wood filler in exposed nail and screw indentations and sand smooth.
- C. On items to receive transparent finishes, use wood filler matching or blending with surrounding surfaces and of types recommended for applied finishes.
- D. Finish work in accordance with AWI/AWMAC/WI (AWS) or AWMAC/WI (NAAWS), Section 5 - Finishing for grade specified and as follows:

1. Transparent:
 - a. System - 1, Lacquer, Nitrocellulose.
 - b. Stain: As selected by Architect.
 - c. Sheen: Flat.

PART 3 EXECUTION

3.01 EXAMINATION

- A. Verify adequacy of backing and support framing.
- B. Verify location and sizes of utility rough-in associated with work of this section.

3.02 INSTALLATION

- A. Install work in accordance with AWI/AWMAC/WI (AWS) or AWMAC/WI (NAAWS) requirements for grade indicated.
- B. Set and secure custom cabinets in place, assuring that they are rigid, plumb, and level.
- C. Use fixture attachments in concealed locations for wall mounted components.
- D. Use concealed joint fasteners to align and secure adjoining cabinet units.
- E. Carefully scribe casework abutting other components, with maximum gaps of 1/32 inch (0.79 mm). Do not use additional overlay trim for this purpose.
- F. Secure cabinets to floor using appropriate angles and anchorages.
- G. Countersink anchorage devices at exposed locations. Conceal with solid wood plugs of species to match surrounding wood; finish flush with surrounding surfaces.

3.03 ADJUSTING

- A. Adjust installed work.
- B. Adjust moving or operating parts to function smoothly and correctly.

3.04 CLEANING

- A. Clean casework, counters, shelves, hardware, fittings, and fixtures.

END OF SECTION