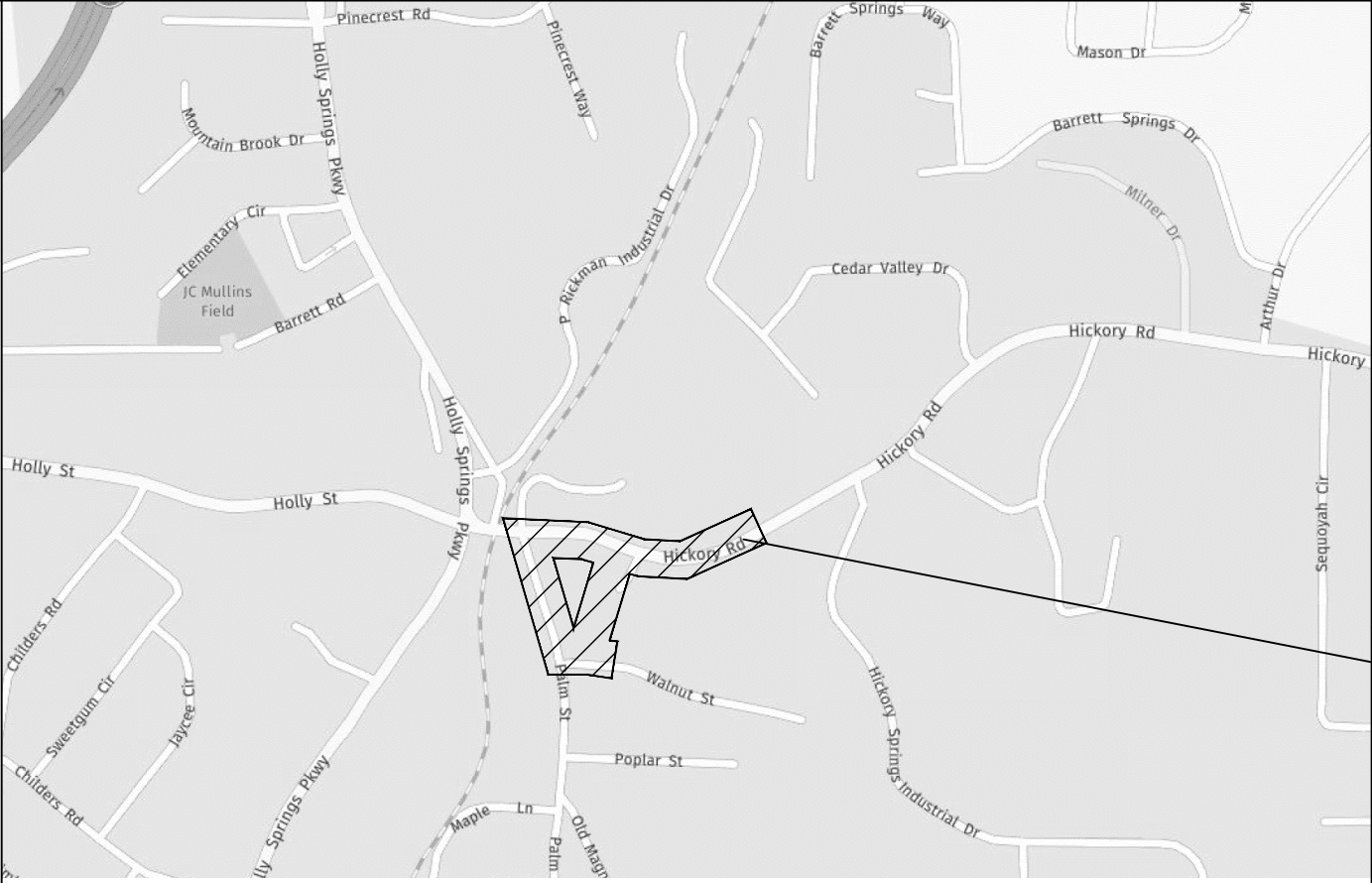


CITY OF HOLLY SPRINGS  
DEPARTMENT OF PUBLIC WORKS  
HICKORY ROAD & PALM STREET  
INTERSECTION IMPROVEMENT PROJECT

LAND LOT 306 & 343, 15th DISTRICT, 2nd SECTION  
CITY OF HOLLY SPRINGS, CHEROKEE COUNTY, GEORGIA.



LOCATION SKETCH

DESIGN DATA: HICKORY ROAD  
TRAFFIC A.D.T.: 11225 (2022)  
TRAFFIC A.D.T.: 17650 (2042)  
TRAFFIC D.H.V.: 1615  
DIRECTIONAL DIST.: 57% / 43%  
% TRUCKS: 6.5%  
24 HR TRUCK %: 6.0%

NOTE :  
THE LIGHTING PLAN AND LANDSCAPE  
PLAN FOR THIS PROJECT ARE TO BE  
UNDER A SEPARATE SUBMITTAL.

FUNCTIONAL CLASS:  
URBAN LOCAL ROAD

THIS PROJECT IS 100% IN  
CHEROKEE COUNTY AND IS  
100% IN CONGRESSIONAL DISTRICT NO. 11.

SPEED LIMIT: HICKORY ROAD 35 MPH  
PALM STREET EXTENSION 25 MPH  
PALM STREET 35 MPH  
WALNUT STREET 25 MPH  
SPEED DESIGN: 25-35 MPH

DESIGNED IN ENGLISH UNITS.

GEOGRAPHICAL AND VERTICAL INFORMATION WERE OBTAINED USING @GPS SOLUTIONS (AN INTERNET BASED RTK NETWORK) THAT REPORTS WGS-84 DATUM. THE ANTENNA LOCATIONS ARE SURVEYED IN FROM HARN MONUMENTS THROUGHOUT NORTH GEORGIA AND THE VALUES OF THESE ARE PRESENTLY BEING BLUEBOOKED THROUGH NGS.

LENGTH OF PROJECT

COUNTY: CHEROKEE

NET LENGTH OF ROADWAY  
NET LENGTH OF BRIDGES  
NET LENGTH OF PROJECT  
NET LENGTH OF EXCEPTIONS  
GROSS LENGTH OF PROJECT

PROJECT No.  
1076-17-210  
COUNTY No: 057

MILES

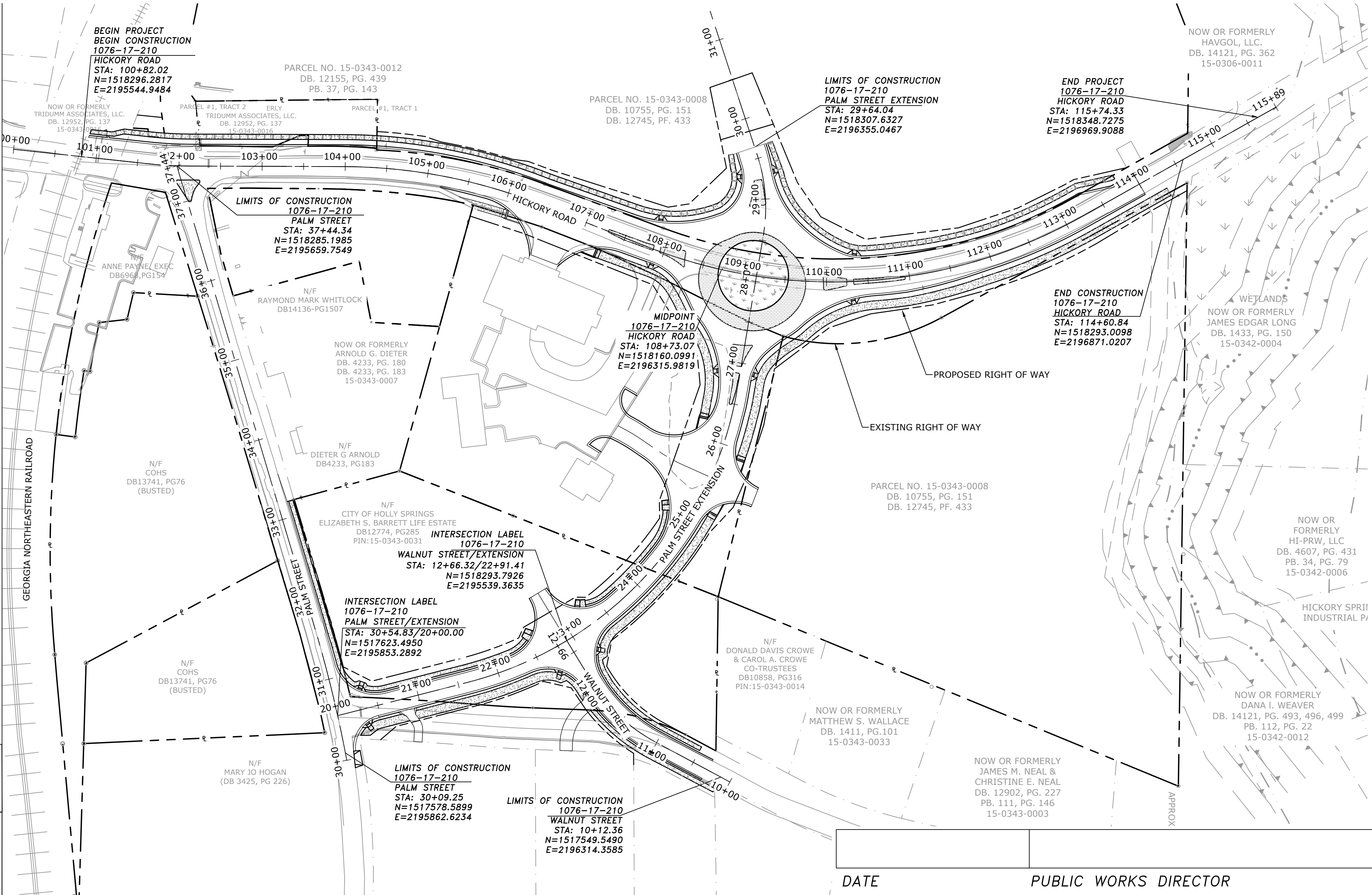
0.65  
--  
0.65  
--  
0.65



NOTE :  
ALL WORK TO BE DONE IN ACCORDANCE WITH STANDARD SPECIFICATIONS OF THE DEPARTMENT OF TRANSPORTATION OF GEORGIA STATE LATEST AS APPROVED BY THE FEDERAL HIGHWAY ADMINISTRATION.

NOTE :  
ALL REFERENCES IN THIS DOCUMENT, WHICH INCLUDES ALL PAPERS, WRITINGS, DOCUMENTS, DRAWINGS, OR PHOTOGRAPHS USED, OR TO BE USED IN CONNECTION WITH THIS DOCUMENT, TO " STATE HIGHWAY DEPARTMENT OF GEORGIA ", "STATE HIGHWAY DEPARTMENT ", GEORGIA STATE HIGHWAY DEPARTMENT ", " HIGHWAY DEPARTMENT ", OR " DEPARTMENT " WHEN THE CONTEXT THEREOF MEANS THE STATE HIGHWAY DEPARTMENT OF GEORGIA, AND SHALL BE DEEMED TO MEAN THE CITY OF HOLLY SPRINGS PUBLIC WORKS.

THE DATA, TOGETHER WITH ALL OTHER INFORMATION SHOWN ON THESE PLANS OR IN ANYWAY INDICATED THEREBY, WHETHER BY DRAWINGS OR NOTES, OR IN ANY OTHER MANNER, ARE BASED UPON FIELD INVESTIGATIONS AND ARE BELIEVED TO BE INDICATIVE OF ACTUAL CONDITIONS. HOWEVER, THE SAME ARE SHOWN AS INFORMATION ONLY, ARE NOT GUARANTEED, AND DO NOT BIND THE DEPARTMENT OF TRANSPORTATION IN ANY WAY. THE ATTENTION OF BIDDER IS SPECIFICALLY DIRECTED TO SUBSECTIONS 102.04, 102.05, AND 104.03 OF THE SPECIFICATIONS.



PLANS PREPARED BY  
SEI UNDER THE  
SUPERVISION OF:

KEVIN W. CLARK, PE



**SEI**  
SOUTHEASTERN ENGINEERING, INC.  
2470 Sandy Plains Road Marietta, Georgia 30066  
tel: 770-321-3936 fax: 770-321-3935  
www.seengineering.com

DATE PUBLIC WORKS DIRECTOR

PLANS COMPLETED  
REVISIONS

MARCH 4, 2019  
MARCH 20, 2019



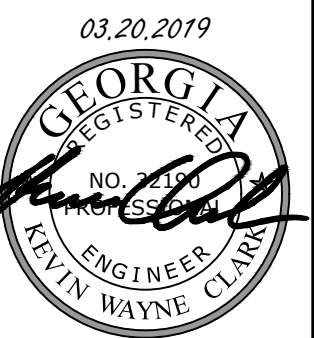
JURISDICTION	PROJECT NUMBER	SHEET NO.	TOTAL SHEETS
CITY OF HOLLY SPRINGS	1076-17-210	3	168

[illegible][illegible]

PROPERTY LINE		STORM LINE	
REQUIRED R/W LINE		COMMUNICATION LINE	
EX. R/W LINE		OH POWER LINE	
EX. EASEMENTS		UG POWER LINE	
PERMANENT EASEMENT FOR MAINTENANCE		WATER LINE	
TEMPORARY EASEMENT FOR CONSTRUCTION		FIBER OPTIC LINE	
EASEMENT FOR CONSTRUCTION OF DRIVEWAYS		GAS LINE	
PERMANENT DRAINAGE EASEMENT		SANITARY SEWER LINE	
		LIGHTING CONDUIT	
		CONSTRUCTION LIMITS	
		LIMIT OF DISTURBANCE	



REVISION DATES			CITY OF HOLLY SPRINGS	
03-20-19			OFFICE:	DATE: 03-04-19
			<div> <div>REVISION SUMMARY</div> <div> <div>SHEET NO.</div> <div>3-01</div> </div> </div>	
			HOLLY SPRINGS ROADWAY PLANS	



DRAWING NAME: I:\CUSTOMERS, PROJECTS\1076 City of Holly Springs\1076-17-210 Holly Springs Town Center\Eng\Construction\1076-17-210 C-ANNO.dwg  
PLOT DATE: TIME: Mar. 22, 2019 - 1:59 PM  
PRINTED BY: BRENNAN GIFFORD