

ADDENDUM NO. 1  
TO THE CONTRACT DOCUMENTS  
for the construction of

Date: 6/1/18  
Project No.: 691778

**SHAMROCK, BLALOCK & HOOPER RESERVOIRS – WATER QUALITY IMPROVEMENTS**

CLAYTON COUNTY WATER AUTHORITY  
CLAYTON COUNTY, GEORGIA

**To All Planholders and/or Prospective Bidders:**

The following changes, additions, and/or deletions are hereby made a part of the Contract Documents for the construction of the Shamrock, Blalock & Hooper Reservoirs – Water Quality Improvements dated June 1, 2018 as fully and completely as if the same were fully set forth therein:

A. **CLARIFICATION**

N/A

B. **PART 1, PROCUREMENT REQUIREMENTS**

N/A

C. **PART 3, SPECIFICATIONS**

1. 00 00 00 Specification Cover Page DELETE and REPLACE with the attached.

2. **Section 40 27 02, PROCESS VALVES AND OPERATORS**

Page 9, 2.05 VALVES, Paragraph E ADD the following:

- 1) Type V731, Gaseous Oxygen Safety Relief Valve 1/2 Inch to 2 Inches:
  - a) Suitable for pure oxygen service, automatically exhaust oxygen vapor up exceedance of pressure setting.
  - b) Rated 600 psi working pressure. Operating pressure is 150psi.
  - c) Stainless steel body and spring. PTFE seat.
  - d) Manufacturers and Products: REGO; Series 9434.

Supplement 1, Self-Regulated Valve Schedule DELETE and REPLACE with the attached.

3. **Section 43 40 01, POLYETHYLENE STORAGE TANK**

Supplement 1, 155T Ferric Chloride Day Tank Data Sheet DELETE and REPLACE with the attached.

4. **Section 43 40 20, POWDERED ACTIVATED CARBON STORAGE AND FEED SYSTEM**

Page 8, 2.09 AIR COMPRESSOR, Paragraph C, DELETE and REPLACE with "Compressed air system must include a dual air-drying system with automatic switchover between drying units. The drying system must have an automatic drain and condition indicator downstream of compressor to remove excess moisture from the system. Compressed air system must deliver a minimum of 38 degrees F pressure dew point to the carbon system."

D. **DRAWINGS**

1. STANDARD DETAILS

ADD 1014-002 CAUTION SIGN

ADD 1014-006 HAZARDOUS MATERIAL SIGNAL

ADD 3213-230 DRIVEWAY APPROACH – CURBSIDE SIDEWALK

ADD 4091-220 MAGMETER GROUNDING

ADD 4091-248 FLOAT TYPE LEVEL SWITCH INSTALLATION

ADD 4091-252 ULTRASONIC LEVEL ELEMENT INSTALLATION – TANK

ADD 4091-383A STANCHION SUPPORT FOR CASE MOUNTED INSTRUMENTS

ADD 4091-384 RAIN HOOD/ SOLAR SHIELD INSTALLATION

ADD 4091-402B PANEL MOUNTING RACK

ADD 4091-402C PANEL MOUNTING RACK WITH CONCRETE PAD

2. DELETE the following Drawings and REPLACE with the attached.

- 01-G-000
- 008-N-601
- 008-N-602
- 10-D-201

**Questions will be accepted until 2:00 PM EST on June 12<sup>th</sup>, 2018**

All Bidders shall acknowledge receipt and acceptance of this Addendum No. 1 in the Bid Form or by submitting the Addendum with the bid package. Bid Forms submitted without acknowledgment or without this Addendum will be considered in nonconformance.

CH2M HILL



---

Project Engineer

Appended hereto and part of Addendum No. 1:  
Section 00 00 00 Specification Cover Page  
Section 40 27 02 Process Valves and Operators, Supplement 1  
Section 43 40 01 Polyethylene Storage Tanks, Supplement 1  
Standard Details:

1014-002  
1014-006  
3213-230  
4091-220  
4091-248  
4091-252  
4091-383A  
4091-384  
4091-402B  
4091-402C  
Drawing:  
01-G-000  
008-N-601  
008-N-602  
10-D-201

**END OF ADDENDUM**

# SHAMROCK, BLALOCK, & HOOPER RESERVOIRS - WATER QUALITY IMPROVEMENTS



Prepared for  
Clayton County Water Authority  
Clayton County, Georgia

Volume 1 of 2  
Specifications

ADDENDUM NO. 1

For information regarding  
this project, contact:

Leigh Jester  
Embassy Row 400, Suite 600  
6600 Peachtree Dunwoody Road NE  
Atlanta, GA 30328  
(678) 530-4365

**ch2m.**

1

CH2M Project No. 691778

APRIL 2018

BID DOCUMENTS HOOPER RESERVOIR DESIGN DOCUMENT  
BID DOCUMENTS SHAMROCK & BLALOCK RESERVOIRS DESIGN DOCUMENTS

<b>Self-Regulated Valve Schedule</b>							
<b>Tag No.</b>	<b>Valve Type No.</b>	<b>Size (inches)</b>	<b>Inlet* Pressure</b>	<b>Outlet* Pressure</b>	<b>Maximum psig</b>	<b>Flow (scfm)</b>	<b>Fluid</b>
103PSV1,2	V731	2"	150		600	48	GOX
151PCV	V711	2"	125	55	125	150	Air
*Inlet Pressure = Set pressure for pressure relief valve or downstream set pressure for pressure reducing valve.							



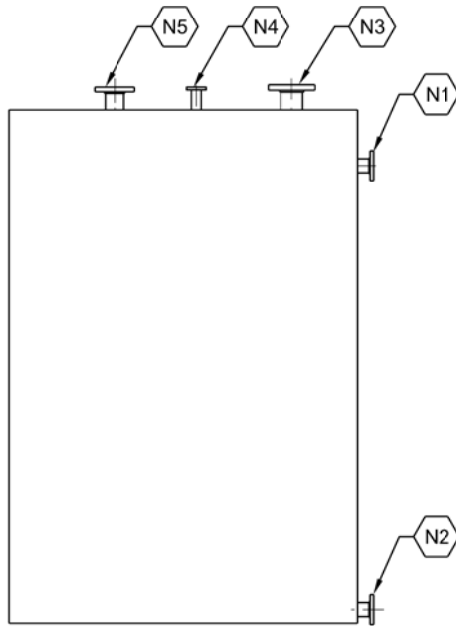
# TANK DATA SHEET

SHAMROCK, BLALOCK,  
& HOOPER RESERVOIRS  
-WATER QUALITY IMPROVEMENTS

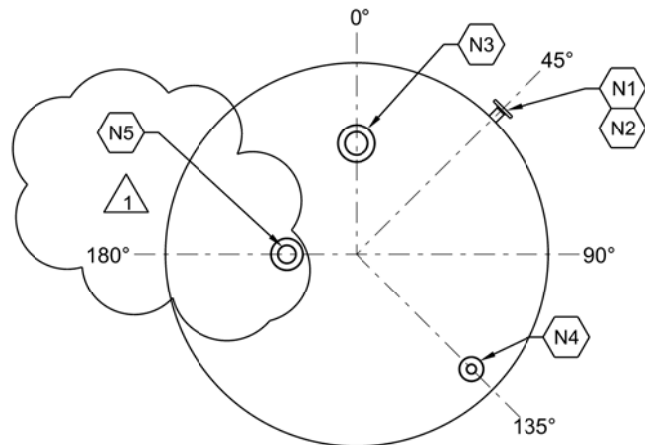
TANK NAME:	FERRIC CHLORIDE DAY TANK		
TAG NUMBER(S):	155T		
QUANTITY:	1		
SERVICE:	FERRIC CHLORIDE (40%)	SPECIFIC GRAVITY:	1.42
pH RANGE:	< 2	TEMP. RANGE (°F):	AMBIENT
DIAMETER:	3 FEET - 10 INCHES	STRAIGHT SHELL HEIGHT:	4 FEET - 5 INCHES
CAPACITY:	295 GALLONS		

**NOTES:**

1. HORIZONTAL NOZZLE ELEVATIONS TO CENTERLINE OF FITTING.
2. SEE SPECIFICATIONS FOR ADDITIONAL INFORMATION.
3. EXTEND FILL LINE (N1) 12" FROM TANK BOTTOM.
4. NOZZLES SHALL EXTEND 6" FROM TANK UNLESS OTHERWISE NOTED
5. VENDOR TO PROVIDE INTERIOR FILLING LINE AS PART OF TANK.
6. ALL NOZZLES SHALL BE CONICAL.

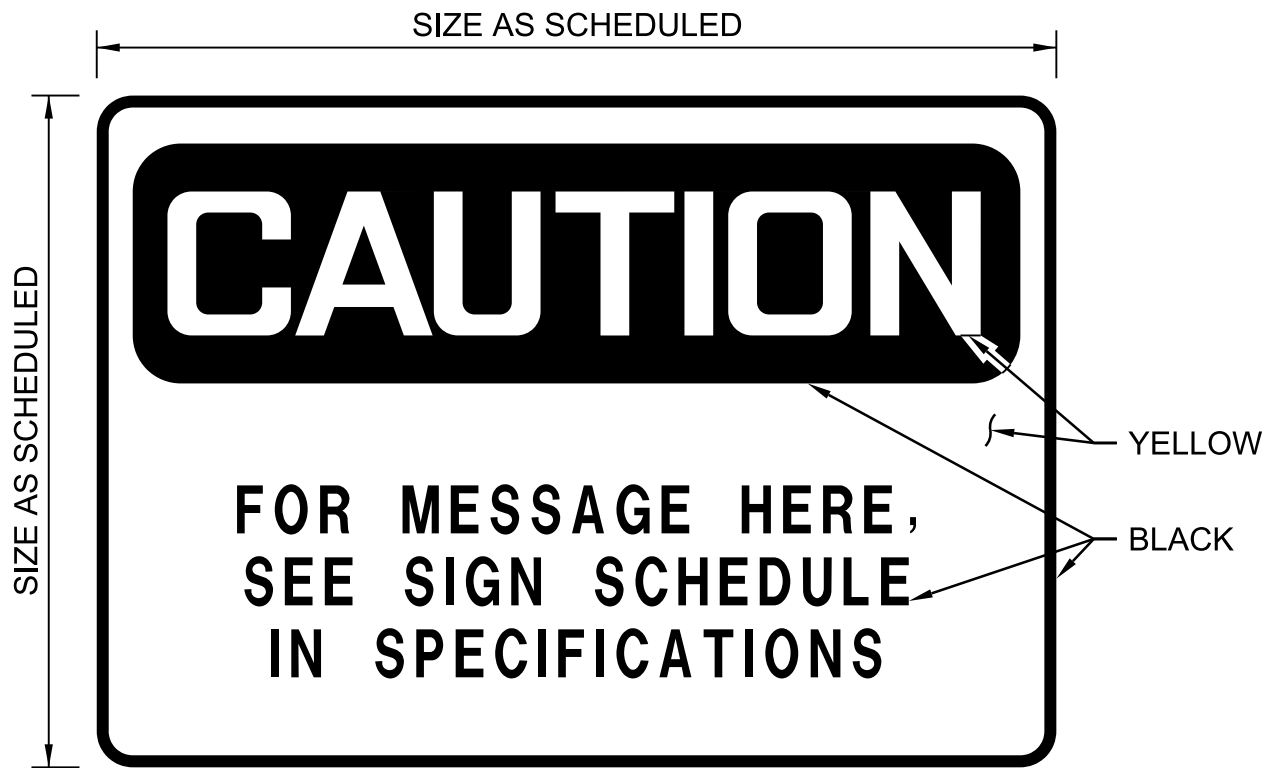


**COMPOSITE SECTION**  
NTS



**PLAN**  
NTS

NOZZLES	MARK	QTY	SIZE	CL ELEV	CL RADIUS	NOTES	DESIGN DATA
FILL	N1	1	1 1/4"	40"	NA	(NOTE 3 & 5)	TANK LOCATION: OUTDOORS
OUTLET	N2	1	1 1/4"	3"	NA		WIND LOADS: YES
LEVEL INSTRUMENT	N3	1	8"	TOP	12"		SNOW LOADS: YES
VENT	N4	1	1"	TOP	18"		TYPE OF TOP HEAD: DISH
LEVEL SWITCH	N5	1	6"	TOP	12"	△ 1	TYPE OF BOTTOM HEAD: FLAT
							LADDER REQUIRED: YES
							PIPE SUPPORTS FOR INTERIOR PIPING: YES
							PIPE SUPPORTS FOR EXTERIOR PIPING: YES
							GRADUATED STANDPIPE: NO
							HEAT TRACING: NO
							INSULATION: NO
							HANDRAILS: NO
							TIE DOWN SYSTEM: YES
							LATERAL RESTRAINT: YES
							N/A = NOT APPLICABLE



**CAUTION SIGN**

NTS

CLAYTON COUNTY WATER AUTHORITY  
SHAMROCK, BLALOCK, & HOOPER RESERVOIRS  
- WATER QUALITY IMPROVEMENTS  
CLAYTON COUNTY, GA

1

ISSUED UNDER  
ADDENDUM NO. 1

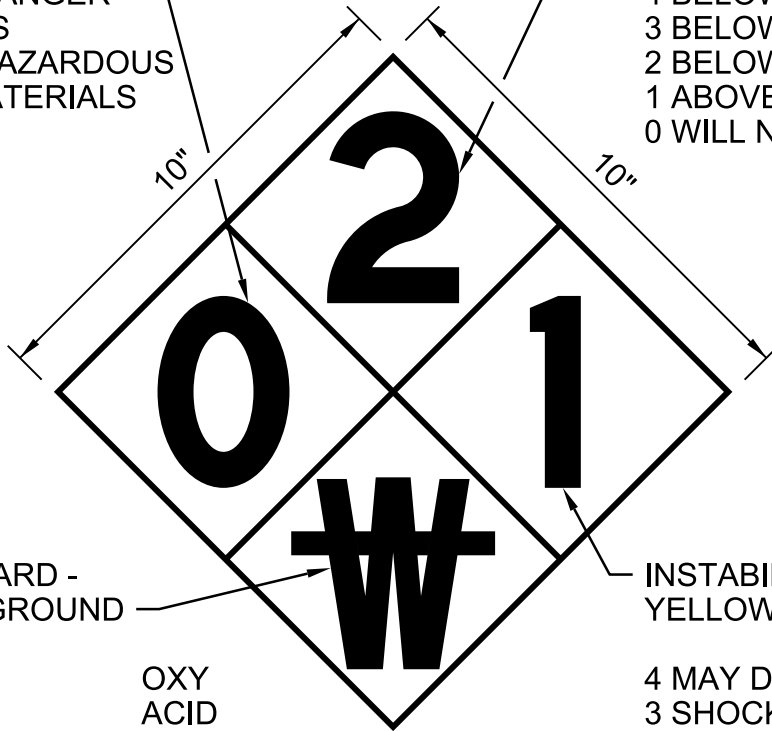
1014-002

HEALTH HAZARD -  
BLUE BACKGROUND

- 4 DEADLY
- 3 EXTREME DANGER
- 2 HAZARDOUS
- 1 SLIGHTLY HAZARDOUS
- 0 NORMAL MATERIALS

FLAMMABILITY HAZARD -  
RED BACKGROUND

- FLASH POINTS
- 4 BELOW 73 F
  - 3 BELOW 100 F
  - 2 BELOW 200 F
  - 1 ABOVE 200 F
  - 0 WILL NOT BURN



SPECIAL HAZARD -  
WHITE BACKGROUND

- OXIDIZER
- ACID
- ALKALI
- CORROSIVE
- USE NO WATER
- RADIATION HAZARD

- OXY
- ACID
- ALK
- COR
- W
- 

INSTABILITY HAZARD -  
YELLOW BACKGROUND

- 4 MAY DETONATE
- 3 SHOCK & HEAT MAY DETONATE
- 2 VIOLENT CHEMICAL CHANGE
- 1 UNSTABLE IF HEATED
- 0 STABLE

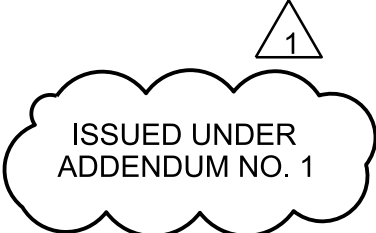
**NOTES:**

1. LETTER HEIGHT: 4"  
LETTER COLOR: BLACK
2. NUMBERS AND LETTERS ON ABOVE SIGNAL DETAIL  
ARE EXAMPLES ONLY. SEE SPECIFICATION 10 14 00  
FOR REQUIREMENTS ON THIS PROJECT.

**HAZARDOUS MATERIAL SIGNAL**

NTS

CLAYTON COUNTY WATER AUTHORITY  
SHAMROCK, BLALOCK, & HOOPER RESERVOIRS  
- WATER QUALITY IMPROVEMENTS  
CLAYTON COUNTY, GA

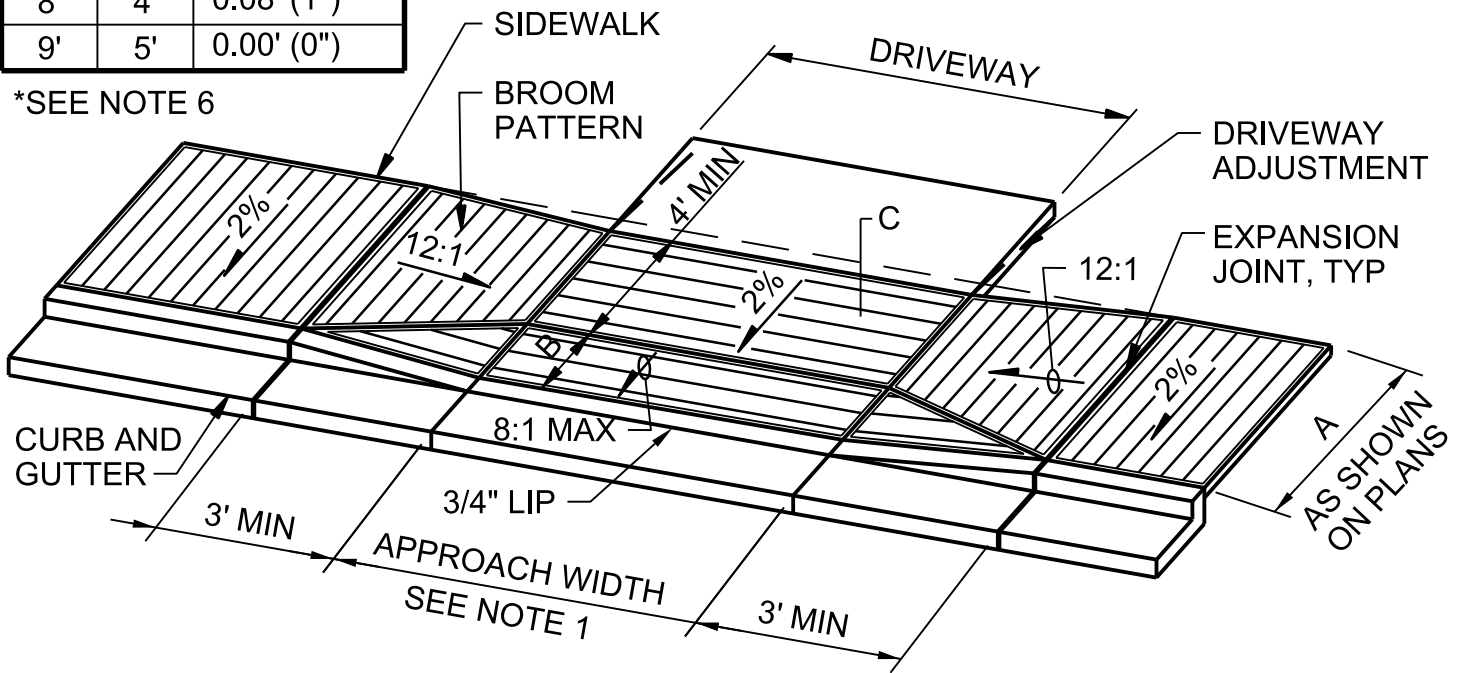


1014-006



A	B	C
5'	2''*	0.29' (3 1/2")
6'	2'	0.29' (3 1/2")
7'	3'	0.19' (2 1/4")
8'	4'	0.08' (1")
9'	5'	0.00' (0")

\*SEE NOTE 6



**NOTES:**

1. APPROACH WIDTH SHALL BE AS SHOWN ON THE PLANS. WHERE IT IS NOT SPECIFIED, THE WIDTH SHALL BE 12 FEET MINIMUM OR AS DIRECTED BY THE ENGINEER.
2. ALL CONCRETE SHALL BE PLACED ON 4" THICK BASE COURSE, UNLESS SHOWN OTHERWISE.
3. ADD CONTRACTION OR COLD JOINT IN CENTER OF APPROACH AND CURB AND GUTTER WHEN APPROACH WIDTH EXCEEDS 20 FEET.
4. APPROACH AND SIDEWALK THICKNESS BETWEEN GUTTER AND DRIVEWAY SHALL BE 6" MINIMUM, UNLESS SHOWN OTHERWISE.
5. THE 2% CROSS-SLOPE OF SIDEWALK IS MEASURED FROM HORIZONTAL. THE 12:1 SLOPE OF SIDEWALK TRANSITION TO DRIVEWAY IS RELATIVE TO THE RUNNING SLOPE OF THE SIDEWALK. THE SLOPE OF THE APPROACH IS MEASURED RELATIVE TO HORIZONTAL.
6. TRANSITION BACK OF WALKWAY 1' INTO DRIVEWAY TO MAINTAIN 4' MINIMUM WIDTH.



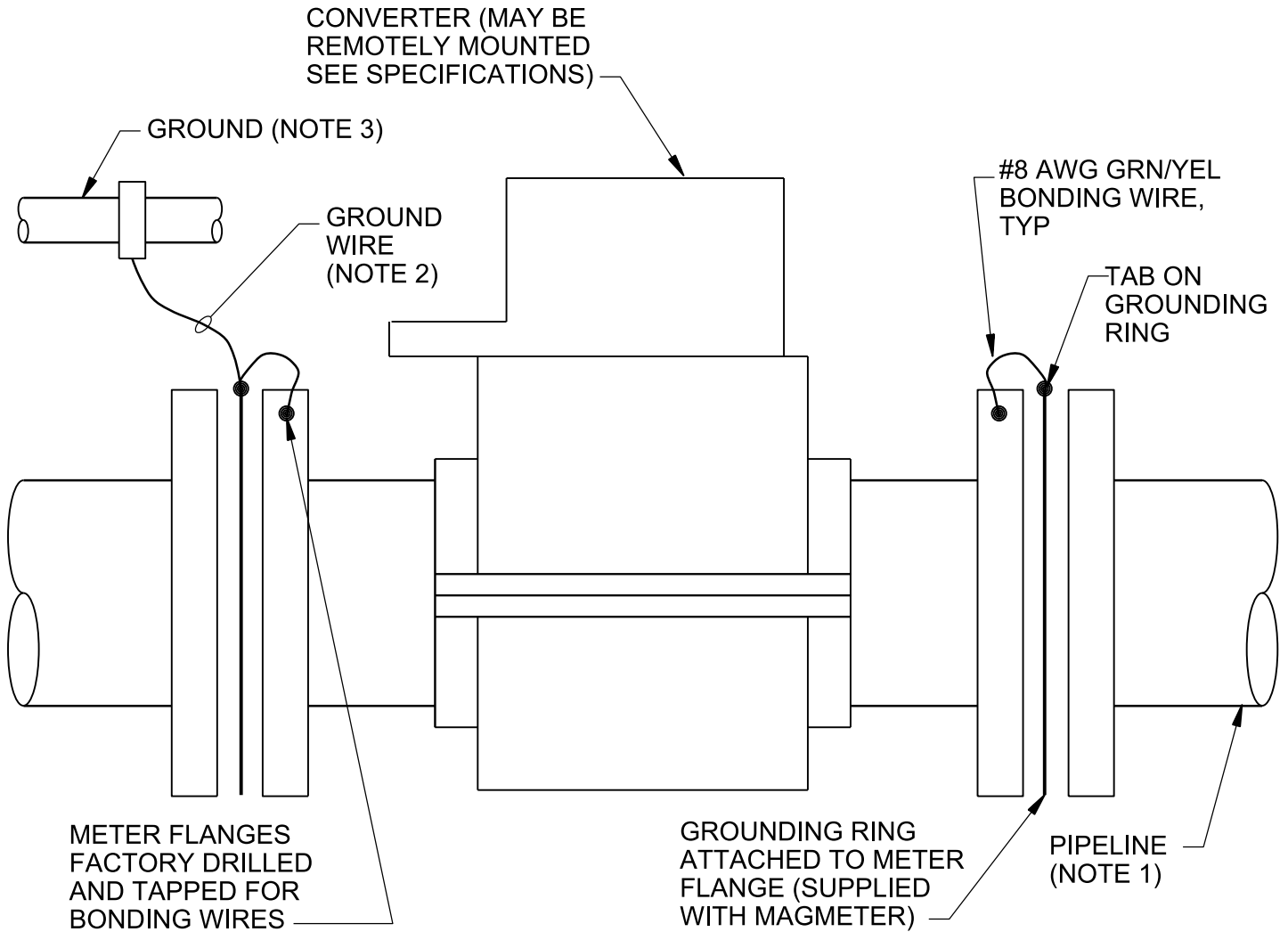
**DRIVEWAY APPROACH-CURBSIDE SIDEWALK**

NTS

ISSUED UNDER  
ADDENDUM NO. 1

**3213-230**

CLAYTON COUNTY WATER AUTHORITY  
SHAMROCK, BLALOCK, & HOOPER RESERVOIRS  
- WATER QUALITY IMPROVEMENTS  
CLAYTON COUNTY, GA



**NOTES:**

1. USE THIS DETAIL WHEN PIPELINE IS ELECTRICALLY NON-CONDUCTIVE (NON-METALLIC OR METALLIC WITH INSIDE COATING OR LINING).
2. NO. 12 AWG INSULATED IF LENGTH IS LESS THAN 6'. IF MORE THAN 6', INSTALL CONDUCTOR IN 3/4" CONDUIT.
3. BOND MAGMETER TO ONE OF THE FOLLOWING ACCEPTABLE GROUNDS:
  - A) METALLIC WATER PIPE IF BURIED PORTION IS MORE THAN 10'.
  - B) STRUCTURAL STEEL
  - C) IF BOTH OF THE ABOVE NOT AVAILABLE, INSTALL 3/4" DIA x 10'-0" LONG COPPER CLAD STEEL GROUND ROD IN GROUND OUTSIDE OF STRUCTURE

**MAGMETER GROUNDING**

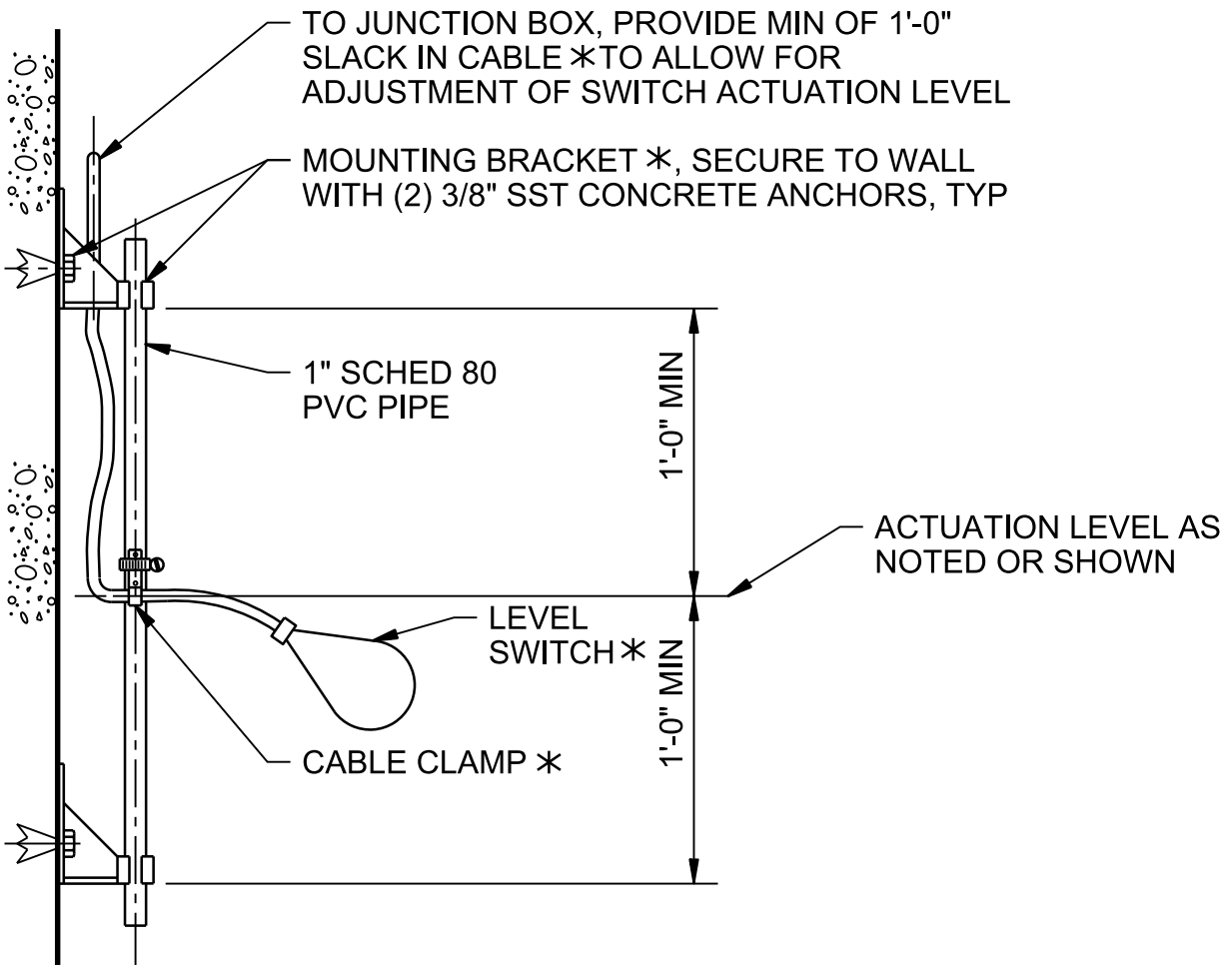
NTS

CLAYTON COUNTY WATER AUTHORITY  
 SHAMROCK, BLALOCK, & HOOPER RESERVOIRS  
 - WATER QUALITY IMPROVEMENTS  
 CLAYTON COUNTY, GA

1

ISSUED UNDER  
 ADDENDUM NO. 1

4091-220



**NOTES:**

1. COMPONENTS DESIGNATED BY \* ARE SUPPLIED BY INSTRUMENT MANUFACTURER.

1

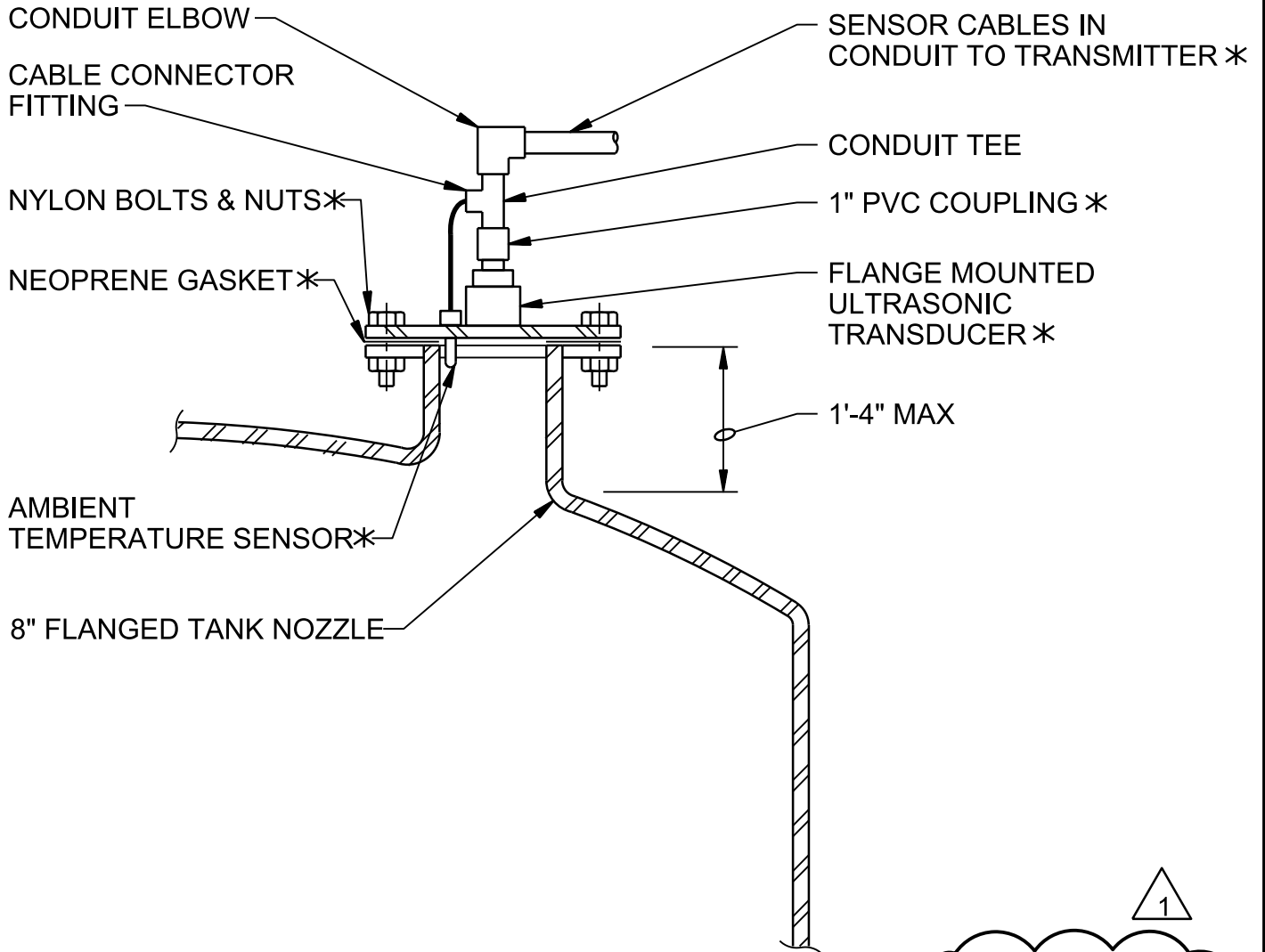
ISSUED UNDER  
ADDENDUM NO. 1

**TYPICAL FLOAT TYPE LEVEL SWITCH INSTALLATION**

NTS

CLAYTON COUNTY WATER AUTHORITY  
SHAMROCK, BLALOCK, & HOOPER RESERVOIRS  
- WATER QUALITY IMPROVEMENTS  
CLAYTON COUNTY, GA

4091-248



1

ISSUED UNDER  
ADDENDUM NO. 1

NOTES:

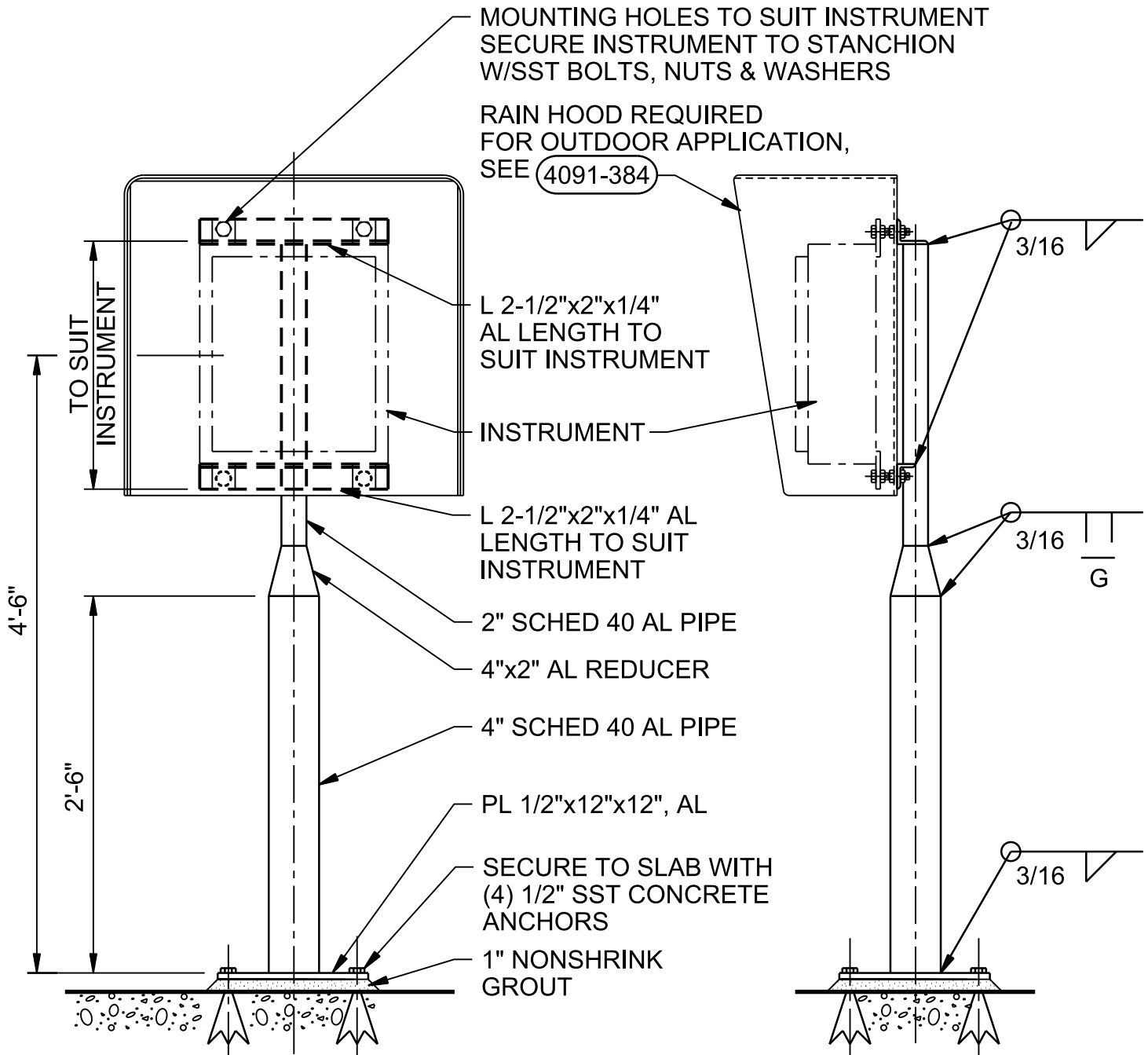
1. COMPONENTS DESIGNATED BY\* ARE SUPPLIED BY INSTRUMENT MANUFACTURER.

ULTRASONIC LEVEL ELEMENT INSTALLATION - TANK

NTS

CLAYTON COUNTY WATER AUTHORITY  
SHAMROCK, BLALOCK, & HOOPER RESERVOIRS  
- WATER QUALITY IMPROVEMENTS  
CLAYTON COUNTY, GA

4091-252



**NOTES:**

1. ROUND OFF ALL EXPOSED EDGES AND CORNERS.
2. PAINT ALUMINUM IN CONTACT WITH CONCRETE ACCORDING TO SPECIFICATIONS FOR PAINTING.

ISSUED UNDER  
ADDENDUM NO. 1

**STANCHION SUPPORT FOR CASE MOUNTED INSTRUMENTS**

NTS

CLAYTON COUNTY WATER AUTHORITY  
SHAMROCK, BLALOCK, & HOOPER RESERVOIRS  
- WATER QUALITY IMPROVEMENTS  
CLAYTON COUNTY, GA

4091-383A

BACK FORMED OF SINGLE SHEET 10 GA ALUMINUM, TACK WELD TO TOP & SIDES AS REQUIRED

TOP & SIDES FORMED OF SINGLE SHEET 10 GA ALUMINUM

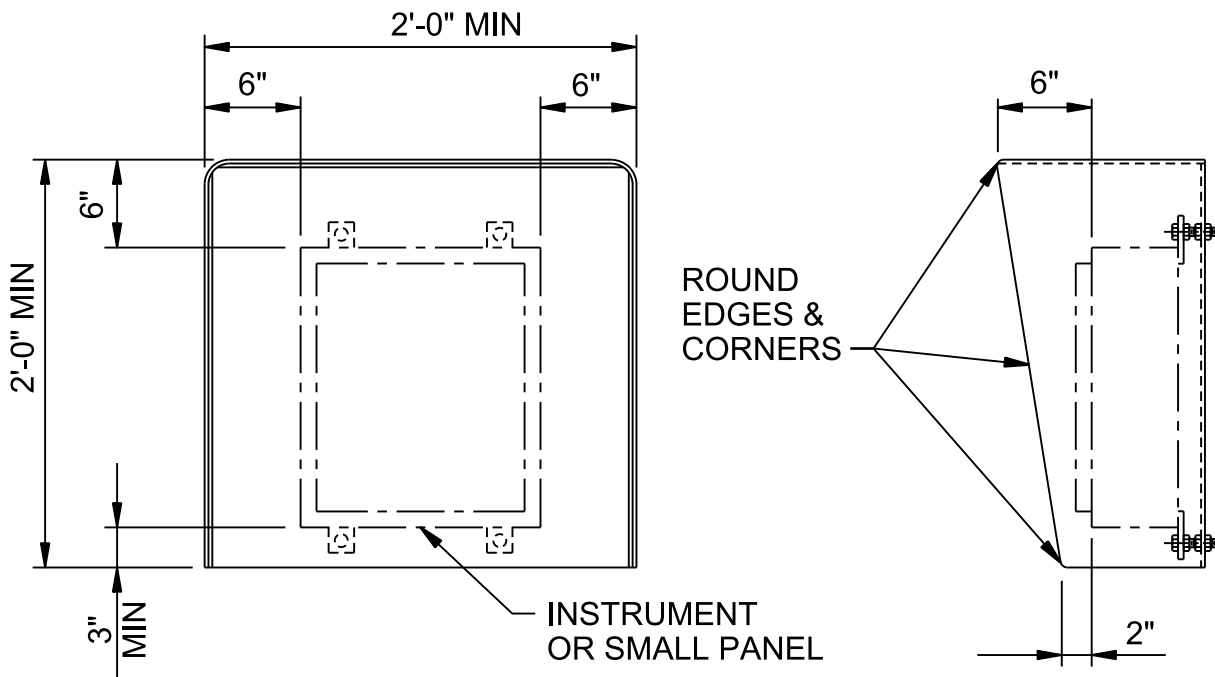
3/8" SST STUD BOLT WITH SST NUTS AND WASHERS, TYP OF 4

INSTRUMENT/HOOD SUPPORT ANGLE OR UNISTRUT (SHOWN) AS APPLICABLE

RAINHOOD

INSTRUMENT MOUNTING FOOT

INSTRUMENT ENCLOSURE



**NOTES:**

1. ALL EXPOSED EDGES TO BE GROUND SMOOTH AND BURR FREE.
2. MOUNT RAIN HOOD BETWEEN INSTRUMENT AND MOUNTING BRACKET. DRILL HOLES IN RAIN HOOD AS PER MOUNTING HOLES FOR INSTRUMENT.

**RAIN HOOD / SOLAR SHIELD INSTALLATION**

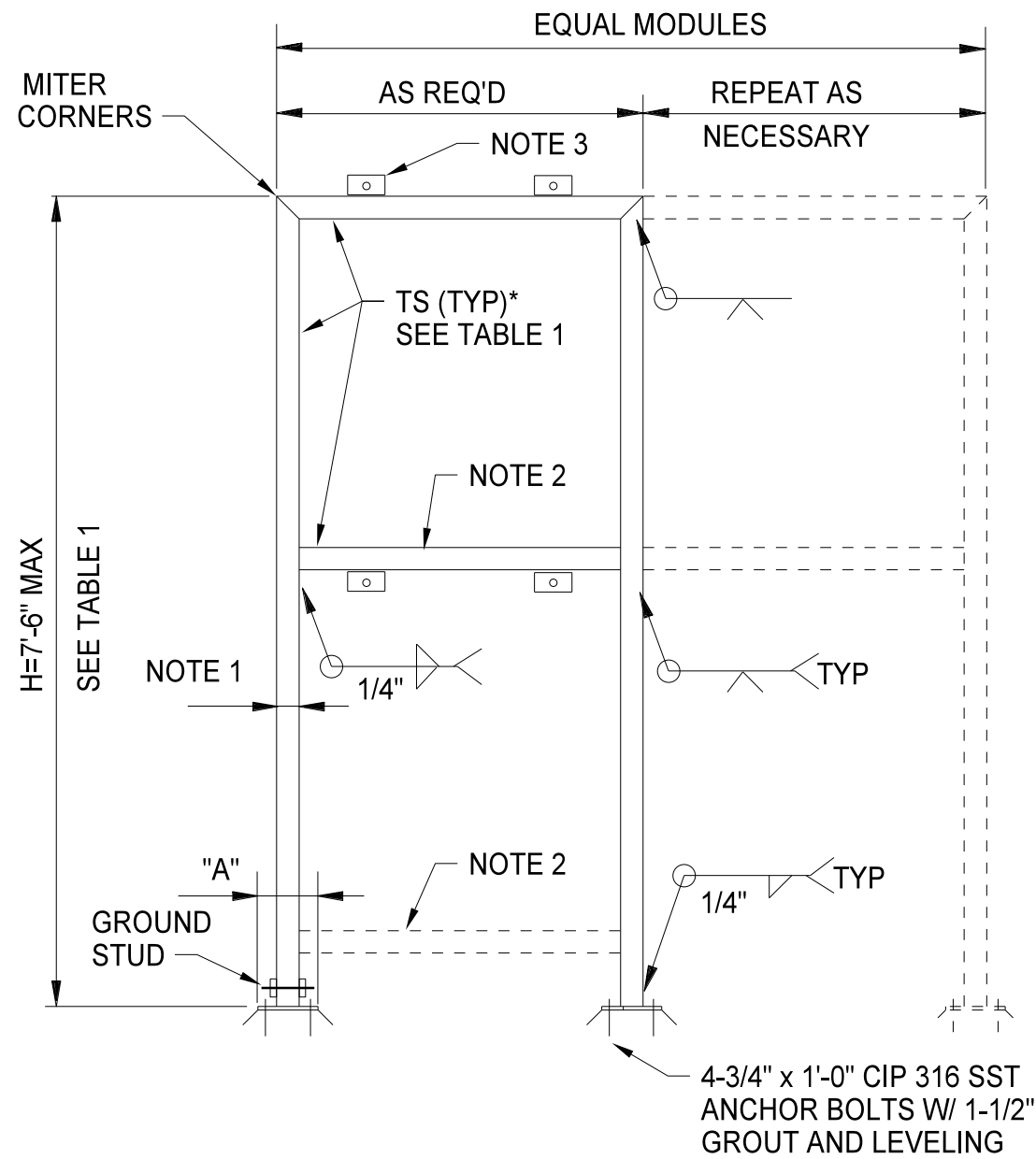
NTS

CLAYTON COUNTY WATER AUTHORITY  
 SHAMROCK, BLALOCK, & HOOPER RESERVOIRS  
 - WATER QUALITY IMPROVEMENTS  
 CLAYTON COUNTY, GA

1

ISSUED UNDER  
 ADDENDUM NO. 1

4091-384



**ELEVATION**



**PLAN**

**NOTES:**

1. TOTAL WEIGHT OF PANEL(S) SHALL NOT EXCEED 750 LB IN EACH MODULE.
2. FOR PANELS WITH "H" GREATER THAN 4'-0". ONE HORIZONTAL MEMBER MUST BE LOCATED WITHIN THE MIDDLE THIRD OF THE FRAME HEIGHT. PROVIDE ADD'L MEMBERS AS NECESSARY FOR PANEL MOUNTING.
3. PROVIDE L 2 1/2"x 2 1/2"x 1/4"x 0'-3" WELD ALL AROUND TO TS: TYP AT EACH PANEL MOUNT.
4. GRIND ALL WELDS AND SHARP CORNERS SMOOTH.
5. THIS DETAIL APPLIES TO NON-FREE STANDING ELECTRICAL EQUIPMENT OVER 25 LB WHICH IS NOT MOUNTED ON A FREE STANDING FRAME OR IS NOT WALL MOUNTED.
6. PANEL OR INSTRUMENT FRONT FACES NORTH, UNLESS OTHERWISE NOTED.

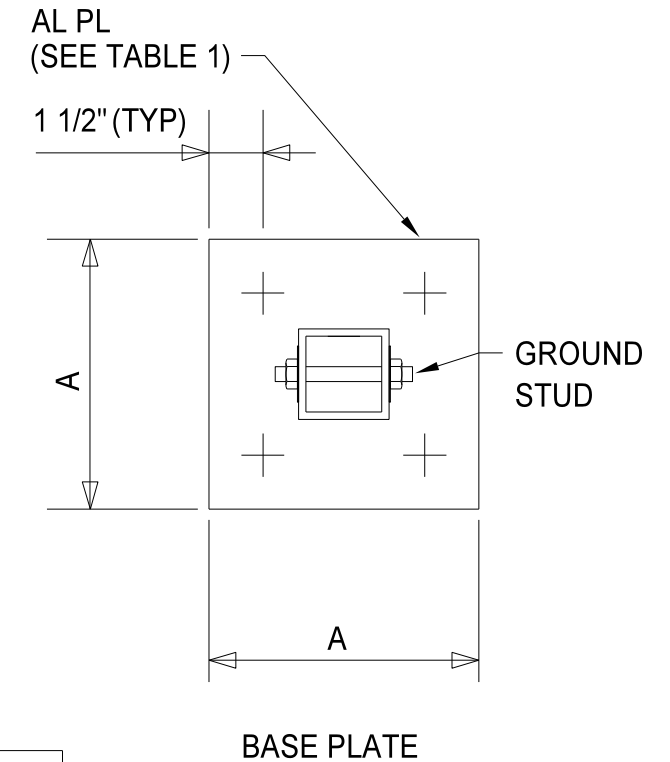
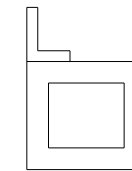


TABLE 1			
HEIGHT "H"	ALUMINUM FRAME		
	TS (MIN SIZE)	BASE PLATE (IN)	
		A	t
5'-0" MAX.	TS 3 x 3 x .188	8	1/2
7'-6" MAX.	TS 4 x 4 x .188	9	5/8

7. FOR OUTDOOR APPLICATIONS, PROVIDE RAINHOOD/ SOLAR SHIELD AS PER DETAIL 4091-384.
8. PROVIDE #6 BARE COPPER GROUND WIRE FROM EACH PANEL AND INSTRUMENT MOUNTED ON RACK TO GROUND STUD. CONNECTION TO GROUND GRID SPECIFIED UNDER DIVISION 26.

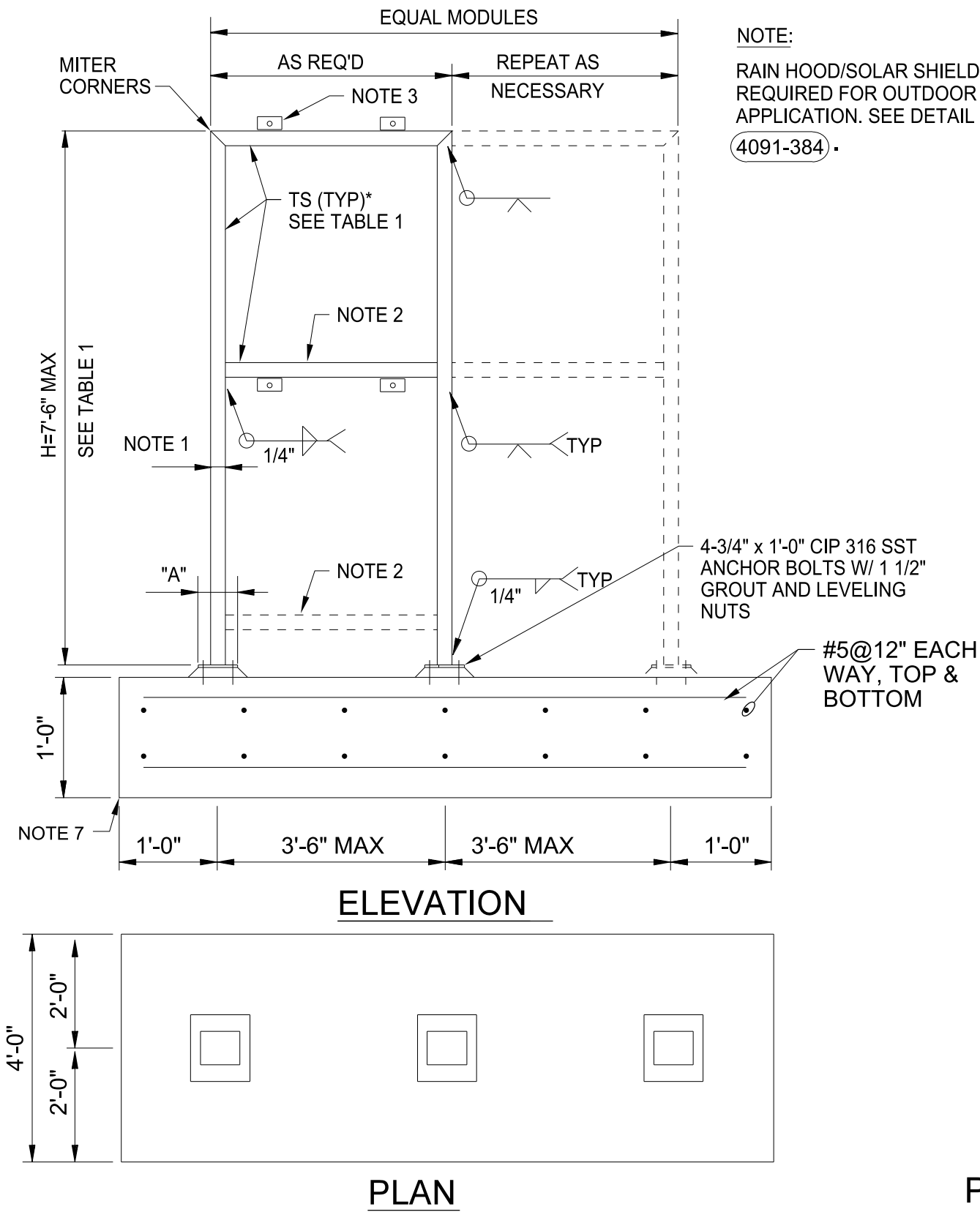
**PANEL MOUNTING RACK**

NTS

CLAYTON COUNTY WATER AUTHORITY  
 SHAMROCK, BLALOCK, & HOOPER RESERVOIRS  
 - WATER QUALITY IMPROVEMENTS  
 CLAYTON COUNTY, GA

ISSUED UNDER  
 ADDENDUM NO. 1

4091-402B



**NOTE:**  
 RAIN HOOD/SOLAR SHIELD  
 REQUIRED FOR OUTDOOR  
 APPLICATION. SEE DETAIL  
 4091-384.

**NOTES:**

1. TOTAL WEIGHT OF PANEL(S) SHALL NOT EXCEED 750 LB IN EACH MODULE.
2. FOR PANELS WITH "H" GREATER THAN 4'-0". ONE HORIZONTAL MEMBER MUST BE LOCATED WITHIN THE MIDDLE THIRD OF THE FRAME HEIGHT. PROVIDE ADD'L MEMBERS AS NECESSARY FOR PANEL MOUNTING.
3. PROVIDE L 2 1/2"x 2 1/2"x 1/4"x 0'-3" WELD ALL AROUND TO TS: TYP AT EACH PANEL MOUNT.
4. GRIND ALL WELDS AND SHARP CORNERS SMOOTH.
5. THIS DETAIL APPLIES TO NON-FREE STANDING ELECTRICAL EQUIPMENT OVER 25 LB WHICH IS NOT MOUNTED ON A FREE STANDING FRAME OR IS NOT WALL MOUNTED.
6. PANEL OR INSTRUMENT FRONT FACES NORTH, UNLESS OTHERWISE NOTED.
7. PROVIDE REINFORCED PAD SHOWN EXCEPT WHERE THE RACK CAN BE MOUNTED ON SUITABLE EXISTING PAD.
8. PROVIDE #6 BARE COPPER GROUND WIRE FROM EACH PANEL AND INSTRUMENT MOUNTED ON RACK TO GROUND STUD. CONNECTION TO GROUND GRID SPECIFIED UNDER DIVISION 26.

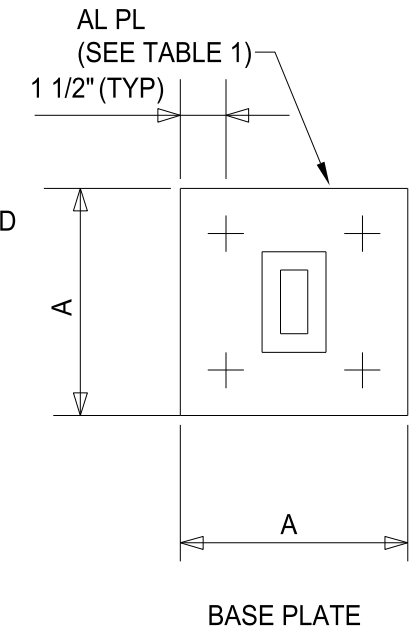


TABLE 1			
HEIGHT "H"	ALUMINUM FRAME		
	TS (MIN SIZE)	BASE PLATE (IN)	
		A	t
5'-0" MAX.	TS 3 x 3 x.188	8	1/2
7'-6" MAX.	TS 4 x 4 x.188	9	5/8

**PANEL MOUNTING RACK WITH CONCRETE PAD**

NTS

CLAYTON COUNTY WATER AUTHORITY  
 SHAMROCK, BLALOCK, & HOOPER RESERVOIRS  
 - WATER QUALITY IMPROVEMENTS  
 CLAYTON COUNTY, GA

1

ISSUED UNDER  
 ADDENDUM NO. 1

4091-402C



# SHAMROCK, BLALOCK, & HOOPER RESERVOIRS - WATER QUALITY IMPROVEMENTS



Prepared for  
Clayton County Water Authority  
Clayton County, Georgia

Volume 2 of 2  
Drawings

ADDENDUM NO. 1

For information regarding  
this project, contact:

Leigh Jester  
Embassy Row 400, Suite 600  
6600 Peachtree Dunwoody Road NE  
Atlanta, GA 30328  
(678) 530-4365

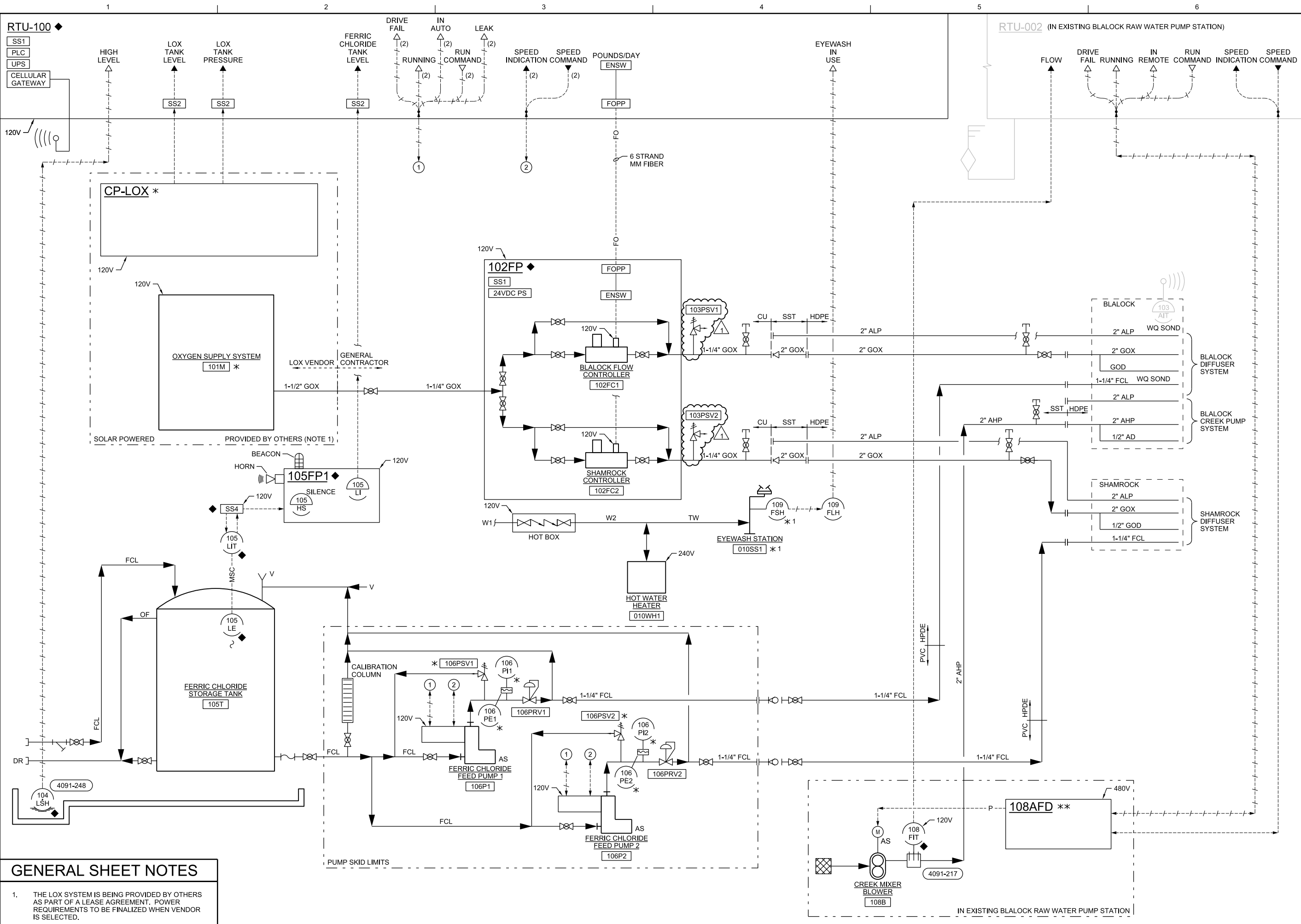
1



CH2M Project No. 691778

APRIL 2018

BID DOCUMENTS HOOPER RESERVOIR DESIGN DOCUMENTS  
BID DOCUMENTS SHAMROCK & BLALOCK RESERVOIRS DESIGN DOCUMENTS

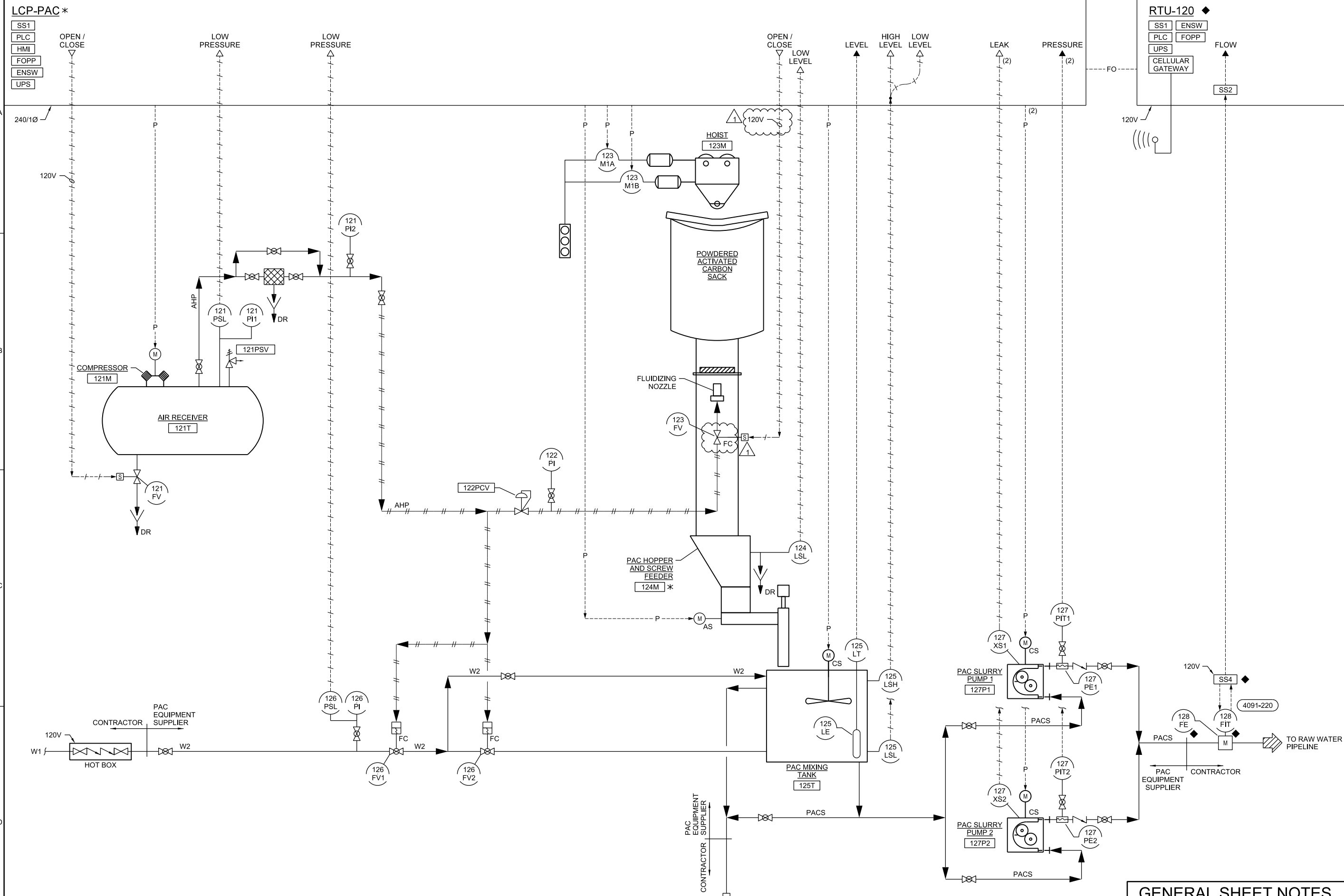


**GENERAL SHEET NOTES**

1. THE LOX SYSTEM IS BEING PROVIDED BY OTHERS AS PART OF A LEASE AGREEMENT. POWER REQUIREMENTS TO BE FINALIZED WHEN VENDOR IS SELECTED.

SHAMROCK, BLALOCK, & HOOPER RESERVOIRS - WATER QUALITY IMPROVEMENTS CLAYTON COUNTY WATER AUTHORITY CLAYTON COUNTY, GA		NO.	DATE	DR	CHK	APVD
1	05/2018	ADDENDUM 1				
INSTRUMENTATION AND CONTROL P&ID LOX AND CHEMICAL STORAGE AND FEED SYSTEM		NO.	DATE	DR	CHK	APVD
NTS		NO.	DATE	DR	CHK	APVD
VERIFY SCALE		NO.	DATE	DR	CHK	APVD
BAR IS ONE INCH ON ORIGINAL DRAWING.		NO.	DATE	DR	CHK	APVD
DATE	APRIL 2018	NO.	DATE	DR	CHK	APVD
PROJ	691778	NO.	DATE	DR	CHK	APVD
DWG	08-N-601	NO.	DATE	DR	CHK	APVD
SHEET	36 of 71	NO.	DATE	DR	CHK	APVD

CH2M HILL  
 REUSE OF DOCUMENTS: THIS DOCUMENT, AND THE IDEAS AND DESIGNS INCORPORATED HEREIN, AS AN INSTRUMENT OF PROFESSIONAL SERVICE, IS THE PROPERTY OF CH2M HILL AND IS NOT TO BE USED, IN WHOLE OR IN PART, FOR ANY OTHER PROJECT WITHOUT THE WRITTEN AUTHORIZATION OF CH2M HILL.  
 © CH2M 2018. ALL RIGHTS RESERVED.

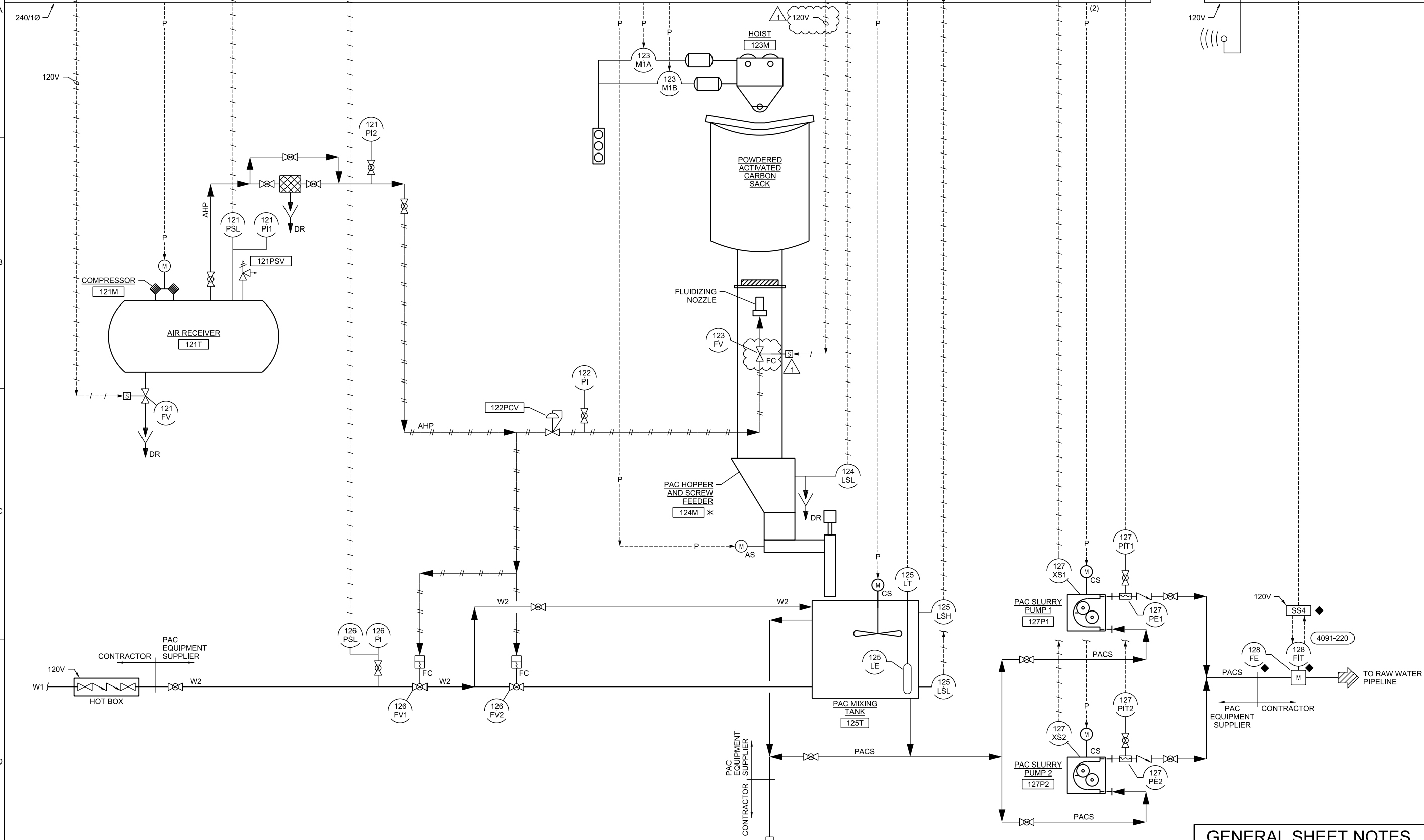


**LCP-PAC\***

SS1  
PLC  
HMI  
FOPP  
ENSW  
UPS

**RTU-120**

SS1 ENSW  
PLC FOPP  
UPS  
CELLULAR GATEWAY



NO.	1	DATE	05/20/18	ADDENDUM	1	REVISION	CHK	APVD	C. WILSON
DSGN									C. WILSON
DR									C. WILSON
BY									C. WILSON
CB									C. WILSON
CW									C. WILSON

SHAMROCK, BLALOCK, & HOOPER RESERVOIRS  
- WATER QUALITY IMPROVEMENTS  
CLAYTON COUNTY WATER AUTHORITY  
CLAYTON COUNTY, GA

**ch2m**  
INSTRUMENTATION AND CONTROL  
P&ID  
**PAC STORAGE AND FEED SYSTEM**

DATE	APRIL 2018
PROJ	691778
DWG	08-N-602
SHEET	37 of 71

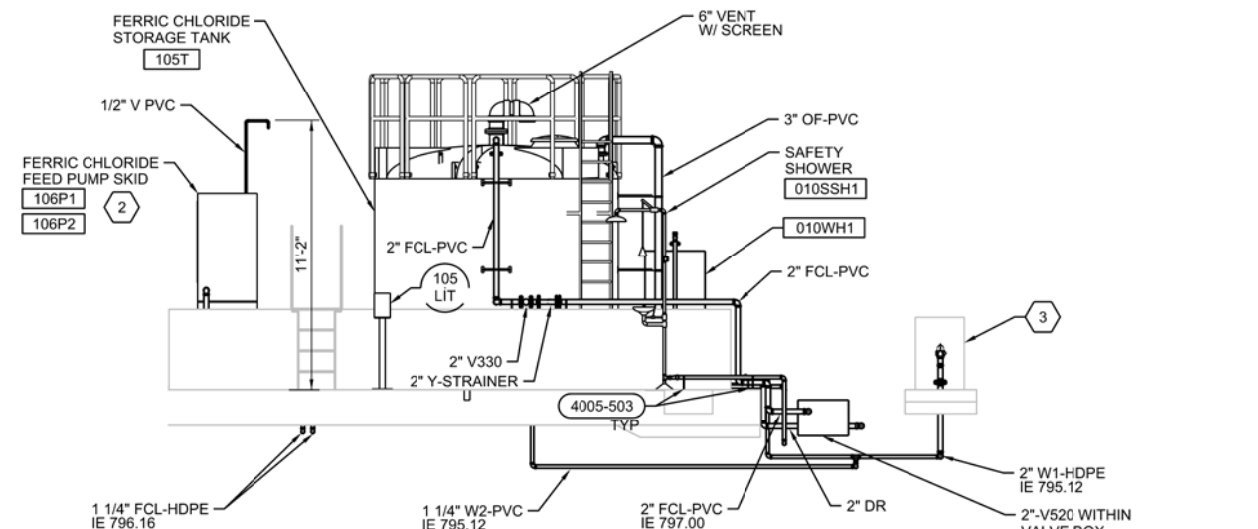
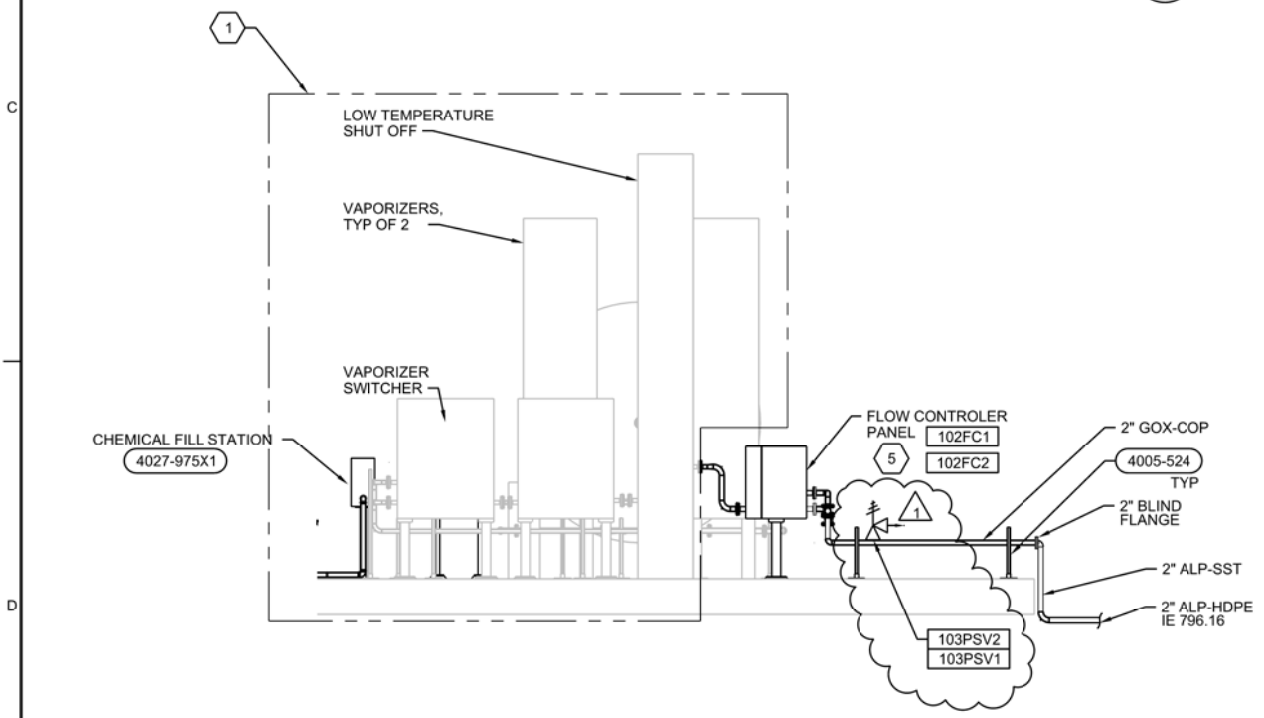
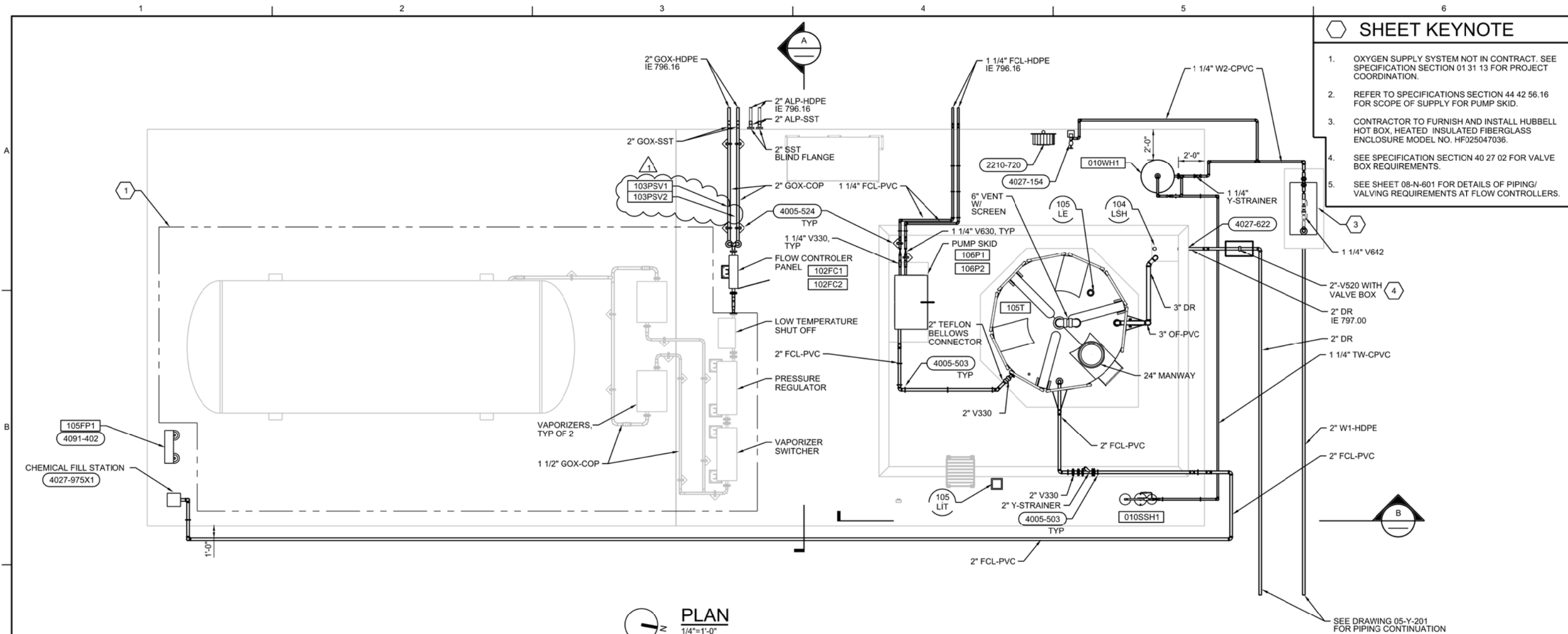
**GENERAL SHEET NOTES**

- ALL EQUIPMENT PROVIDED BY PAC VENDOR UNLESS OTHERWISE INDICATED.

BID DOCUMENTS

**SHEET KEYNOTE**

- OXYGEN SUPPLY SYSTEM NOT IN CONTRACT. SEE SPECIFICATION SECTION 01 31 13 FOR PROJECT COORDINATION.
- REFER TO SPECIFICATIONS SECTION 44 42 56.16 FOR SCOPE OF SUPPLY FOR PUMP SKID.
- CONTRACTOR TO FURNISH AND INSTALL HUBBELL HOT BOX, HEATED INSULATED FIBERGLASS ENCLOSURE MODEL NO. HF025047036.
- SEE SPECIFICATION SECTION 40 27 02 FOR VALVE BOX REQUIREMENTS.
- SEE SHEET 08-N-601 FOR DETAILS OF PIPING/ VALVING REQUIREMENTS AT FLOW CONTROLLERS.



NO.	DATE	ADDENDUM	REVISION	CHK	APVD
1	05/2018			Z BRYAN	E MINICHEW
				L JESTER	J GODFREY

SHAMROCK, BLALOCK, & HOOPER RESERVOIRS  
- WATER QUALITY IMPROVEMENTS  
CLAYTON COUNTY WATER AUTHORITY  
CLAYTON COUNTY, GA

**ch2m**  
PROCESS MECHANICAL  
**LOX & CHEMICAL STORAGE & FEED  
PLAN & SECTION**

VERIFY SCALE	BAR IS ONE INCH ON ORIGINAL DRAWING.
DATE	APRIL 2018
PROJ	691778
DWG	10-D-201
SHEET	40 of 71

REUSE OF DOCUMENTS: THIS DOCUMENT AND THE IDEAS AND DESIGNS INCORPORATED HEREIN AS AN INSTRUMENT OF PROFESSIONAL SERVICE, IS THE PROPERTY OF CH2M AND IS NOT TO BE USED, IN WHOLE OR IN PART, FOR ANY OTHER PROJECT WITHOUT THE WRITTEN AUTHORIZATION OF CH2M. © CH2M 2018. ALL RIGHTS RESERVED.