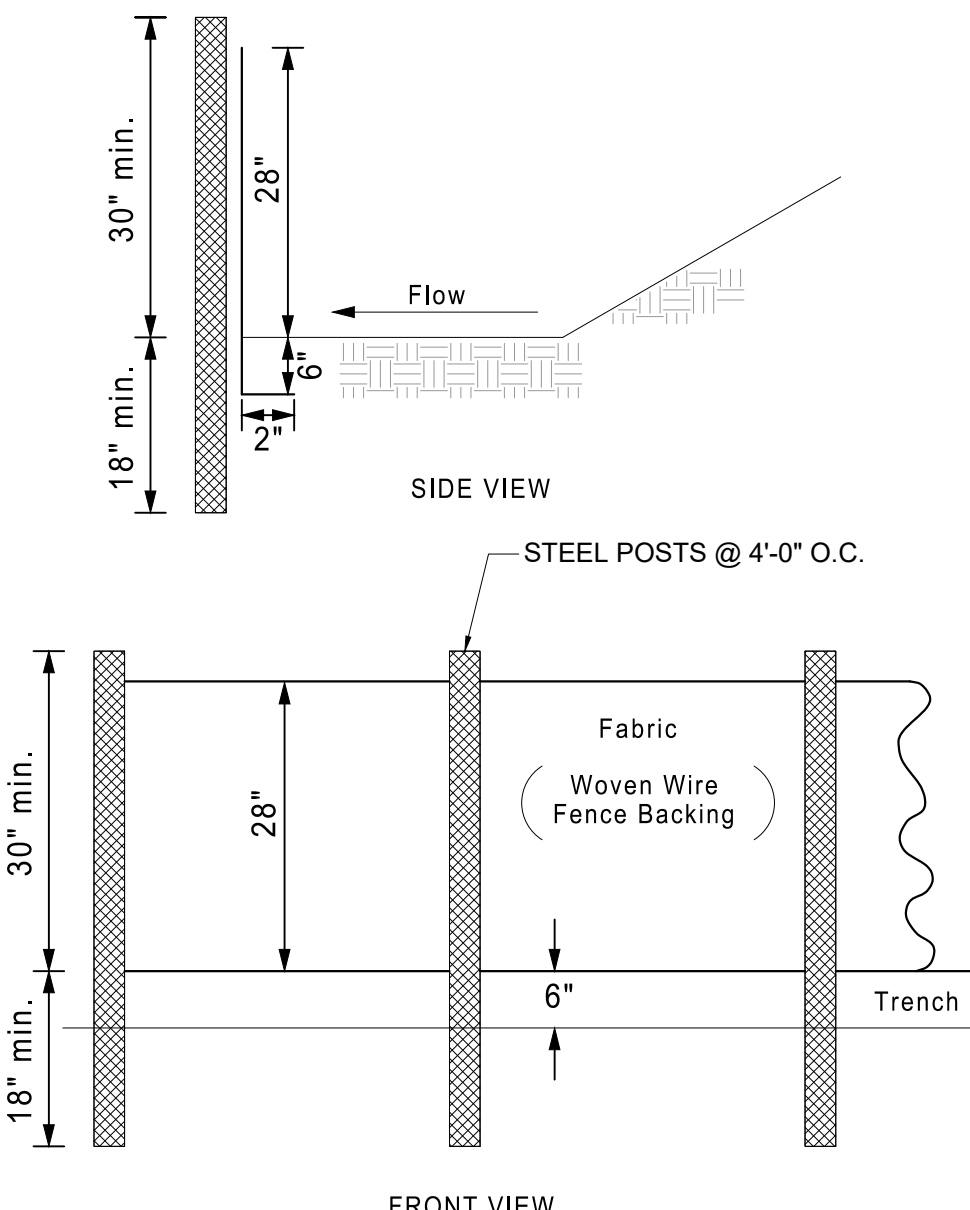
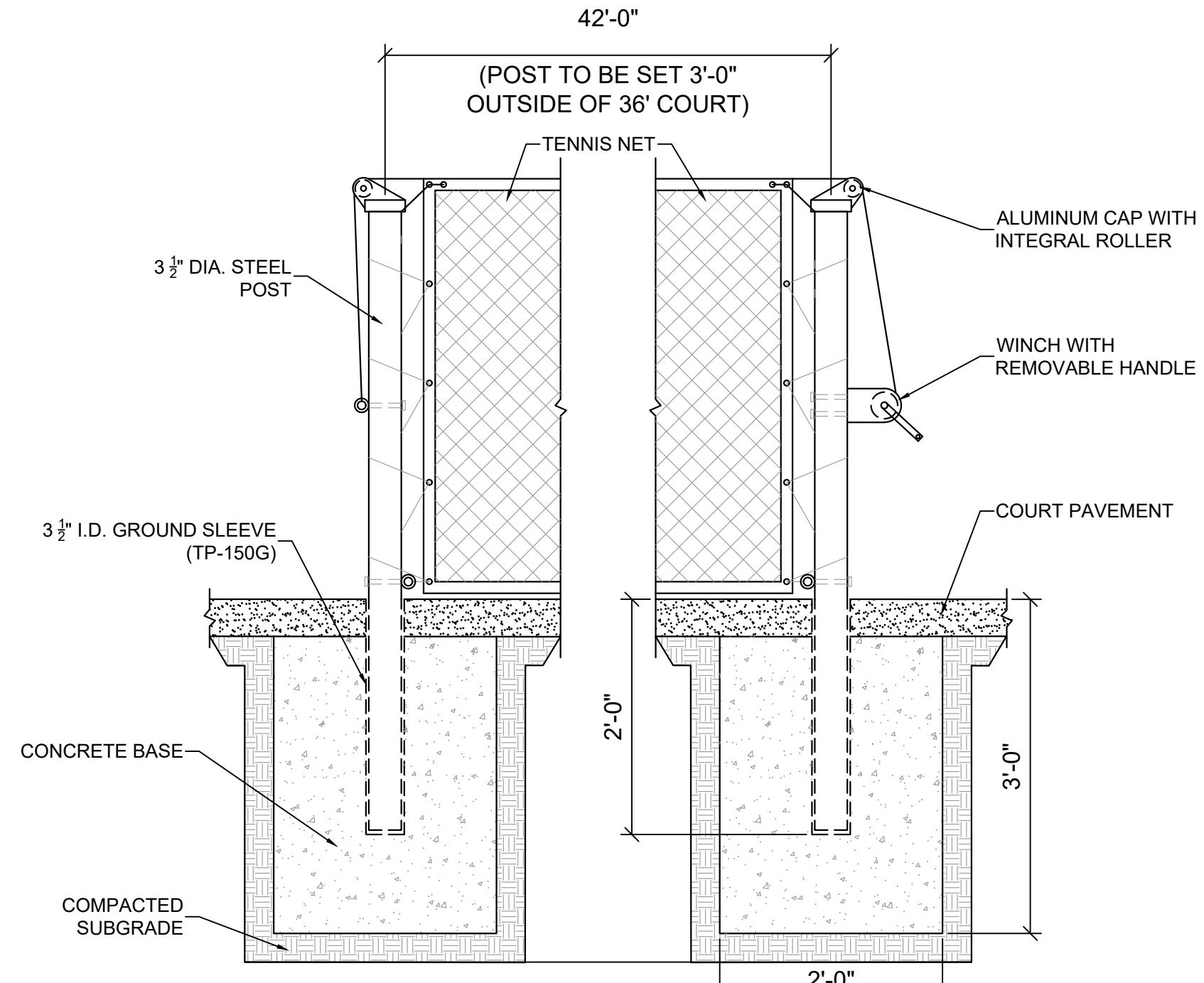


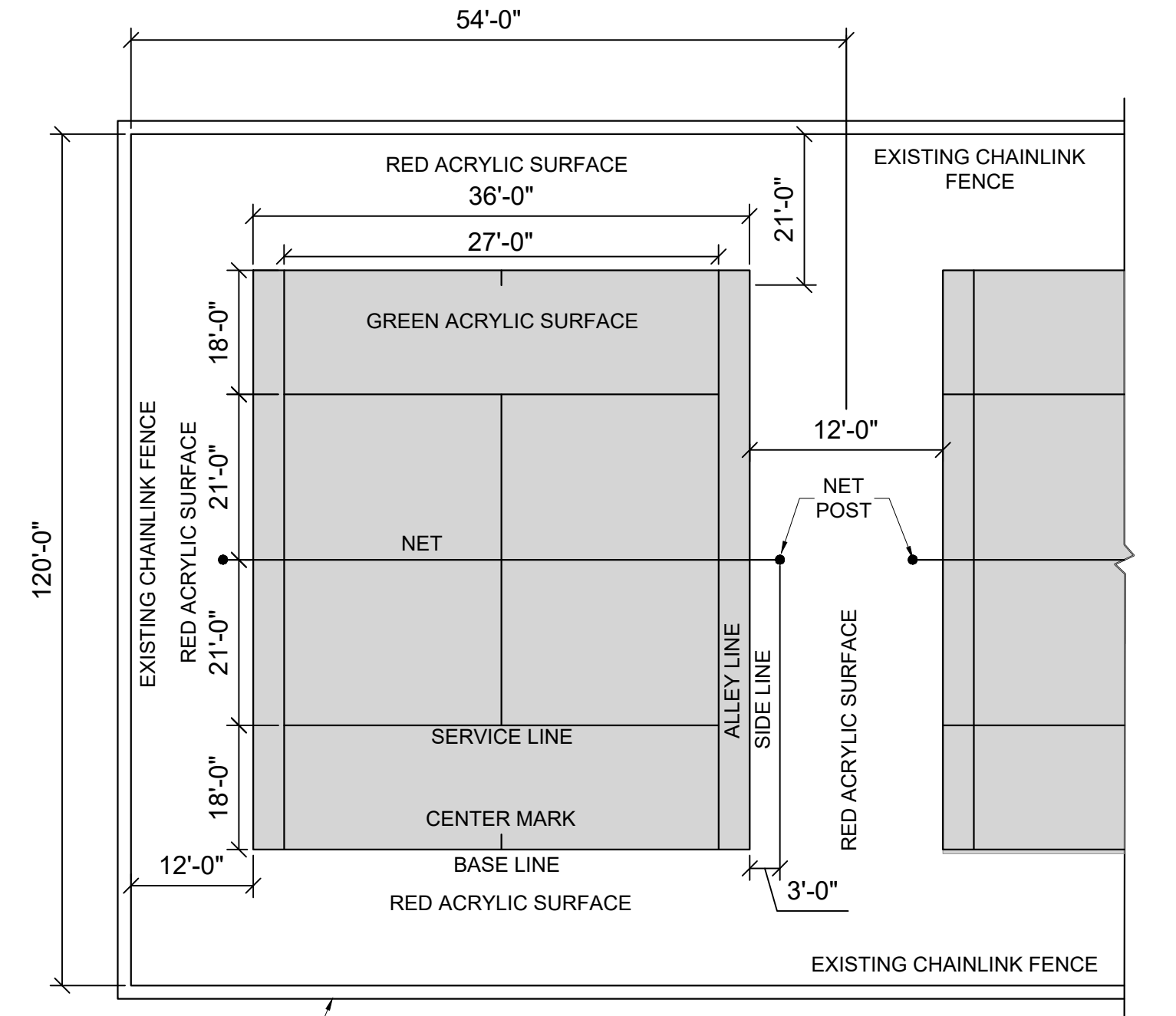
- 1. GENERAL NOTES:**
- REFER TO SPECIFICATIONS SECTION 02930, LAWN AND GRASSES.
 - ALL SODDING SHALL BE CERTIFIED TURFGRASS SOD COMPLYING WITH ASPA SPECIFICATIONS FOR MACHINE-CUT THICKNESS, SIZE, STRENGTH, MOISTURE CONTENT, AND MOWED HEIGHT, AND FREE OF WEEDS AND UNDESIRABLE NATIVE GRASSES.
 - CONTRACTOR SHALL PROVIDE VIABLE SOD OF UNIFORM DENSITY, COLOR, AND TEXTURE OF THE FOLLOWING TURFGRASS SPECIES, STRONGLY, STRONGLY ROOTED, AND CAPABLE OF VIGOROUS GROWTH AND DEVELOPMENT WHEN PLANTED.
 - TURFGRASS SOD SPECIES SHALL BE TIFWAY BERMUDA (419).
 - HARVEST, DELIVER, STORE, AND HANDLE SOD ACCORDING TO THE REQUIREMENTS OF THE AMERICAN SOD PROCEDURES ASSOCIATION'S (ASPA) SPECIFICATION FOR TURFGRASS SOD MATERIALS AND TRANSPLANTING/INSTALLING.
- 2. INSTALLATION NOTES:**
- LAY SOD WITHIN 24 HOURS OF STRIPPING.
 - DO NOT LAY SOD IF DORMANT IF GROUND IS FROZEN OR OVERLY WET.
 - LAY SOD TO FORM A SOLID MASS WITH TIGHTLY FITTED JOINTS.
 - BUTT ENDS AND SIDES OF SOD, DO NOT STRETCH OR OVERLAP.
 - STAGGER SOD STRIPES OR PADS TO OFFSET JOINTS IN ADJACENT COURSES.
 - AVOID DAMAGE TO SUBGRADE OR SOD DURING INSTALLATION.
 - TAMP AND ROLL LIGHTLY TO ENSURE CONTACT WITH SUBGRADE, ELIMINATE AIR POCKETS, AND FORM SMOOTH SURFACE.
 - WORK SIFTED SOIL OR FINE SAND INTO MINOR CRACKS BETWEEN PIECES OF SOD, REMOVE EXCESS TO AVOID SMOTHERING SOD AND ADJACENT GRASS.
 - LAY SOD ACROSS ANGLE OF SLOPES EXCEEDING 3:1
 - ANCHOR SOD ON SLOPES EXCEEDING 6:1 WITH WOOD PEGS SPACED AS RECOMMENDED BY SOD MANUFACTURER BUT NOT LESS THAN 2 ANCHORS PER SOD STRIP TO PREVENT SLIPPAGE.
- 3. MAINTENANCE NOTES:**
- BEGIN MAINTENANCE OF SODDED LAWNS IMMEDIATELY AFTER EACH AREA IS PLANTED.
 - MAINTENANCE AND ESTABLISH LAWNS IMMEDIATELY BY WATERING, FERTILIZING, WEEDING, MOWING, TRIMMING, REPLANTING, AND OTHER OPERATIONS.
- 4. WATERING NOTES:**
- SATURATED SOD WITH FINE WATER SPRAY WITHIN 2 HOURS OF PLANTING.
 - DURING FIRST WEEK, WATER DAILY OR MORE FREQUENTLY AS NECESSARY TO MAINTAIN SOIL TO A MINIMUM DEPTH OF 1-1/2 INCHES BELOW THE SOD.
 - CONTRACTOR TO PROVIDE AND MAINTAIN TEMPORARY PIPING, HOSES, AND LAWN-WATERING EQUIPMENT TO CONVEY WATER FROM SOURCES AND TO KEEP LAWNS UNIFORMLY MOIST TO A DEPT OF 4 INCHES.
 - WATER LAWN AT THE MINIMUM RATE OF 1 INCHES PER WEEK.
- 5. MOWING NOTES:**
- MOW LAWNS AS THERE IS ENOUGH TOP GROWTH TO CUT WITH MOWER SET AT SPECIFIC HEIGHT FOR PRINCIPAL SPECIES PLANTED.
 - REPEAT MOWING AS REQUIRED TO MAINTAIN SPECIFIED HEIGHT WITHOUT CUTTING MORE THAN 40% OF THE GRASS HEIGHT.
 - REMOVE NO MORE THAN 40% OF THE GRASS-LEAF GROWTH IN INITIAL OR SUBSEQUENT MOWINGS.
 - DO NOT DELAY MOWING UNTIL GRASS BLADES BEND OVER AND BECOME MATTED.
 - DO NOT MOW WHEN GRASS IS WET.
 - SCHEDULE INITIAL OR SUBSEQUENCE MOWING TO MAINTAIN GRASS HEIGHT OF 2 TO 3 INCHES.
- 6. POST-FERTILIZATION NOTES:**
- APPLY FERTILIZER TO LAWN AFTER FIRST MOWING AND WHEN GRASS IS DRY.
 - USE FERTILIZER WITH 10-10-10 CONTENT OF NITROGEN, PHOSPHOROUS, AND POTASSIUM.



SILT FENCE-TYPE SENSITIVE
NOT TO SCALE

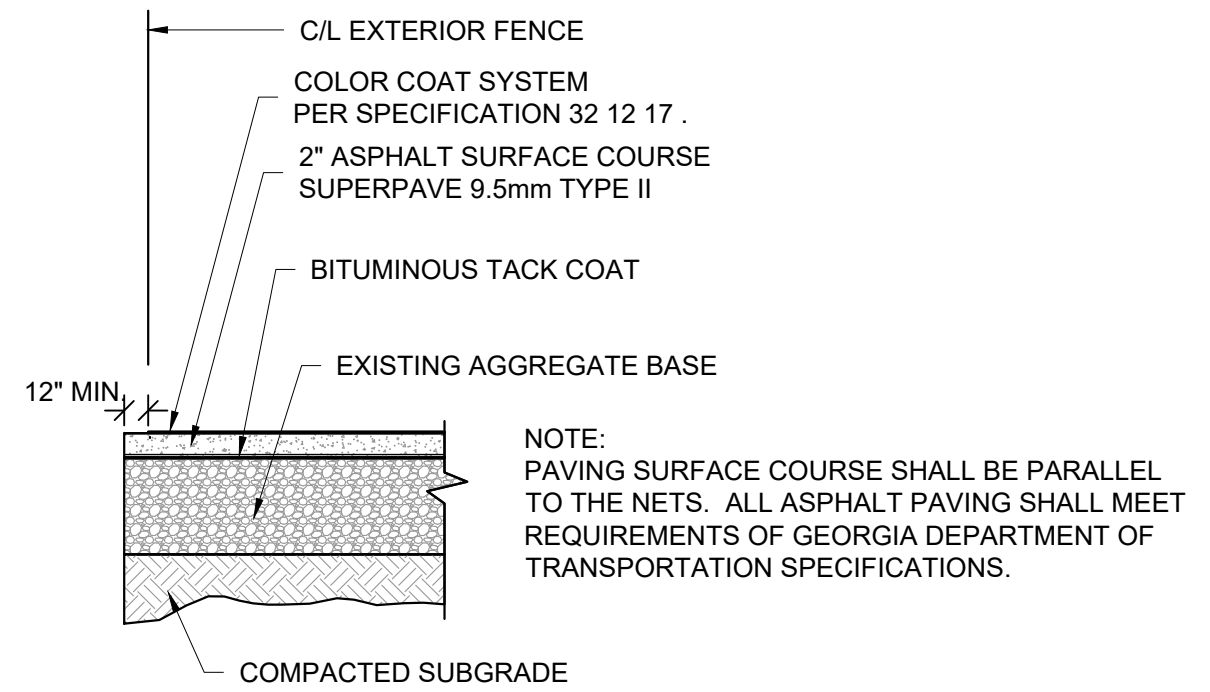


TENNIS POST & NET DETAIL
NOT TO SCALE

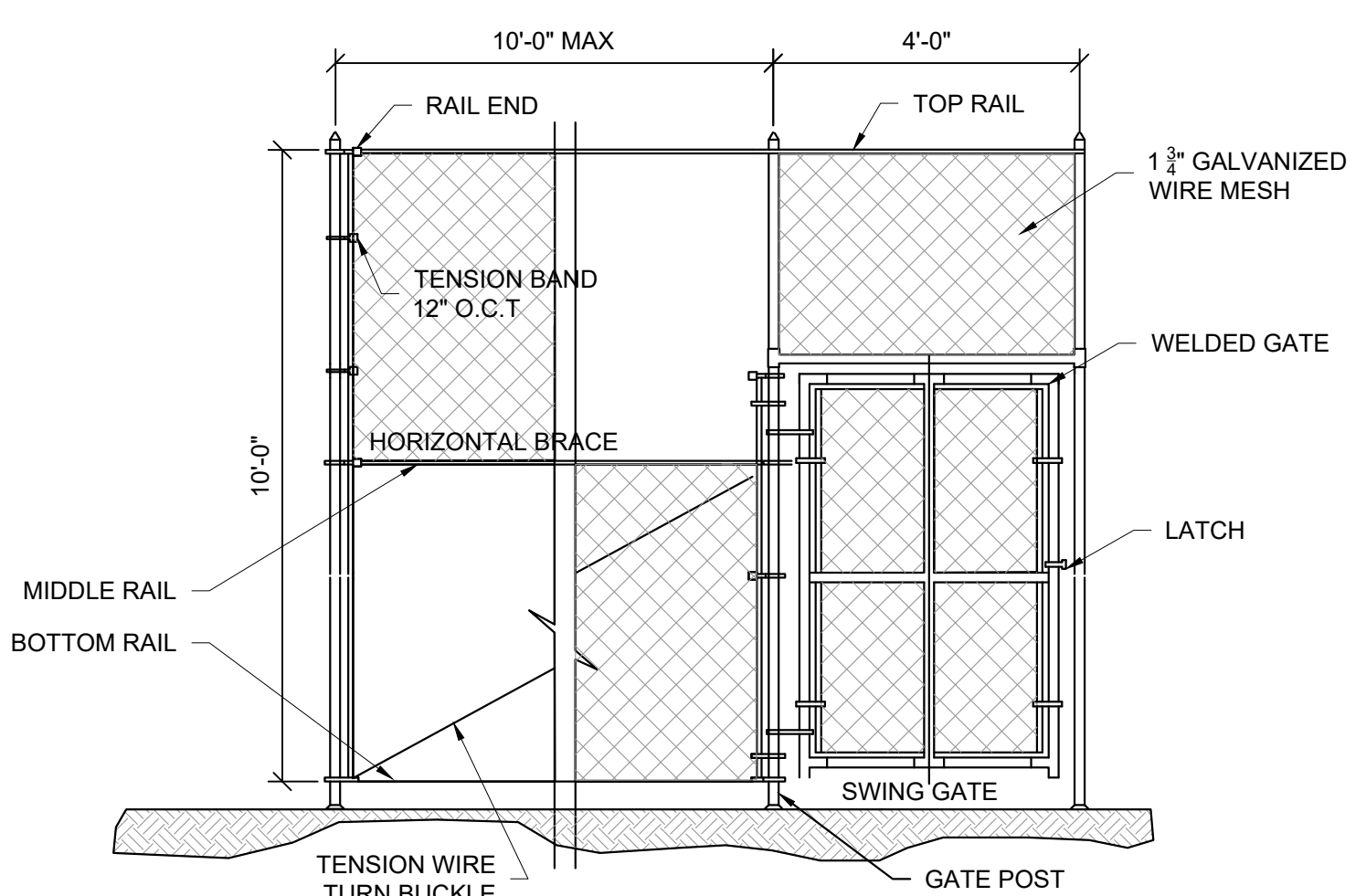


TENNIS COURT LAYOUT DETAIL
NOT TO SCALE

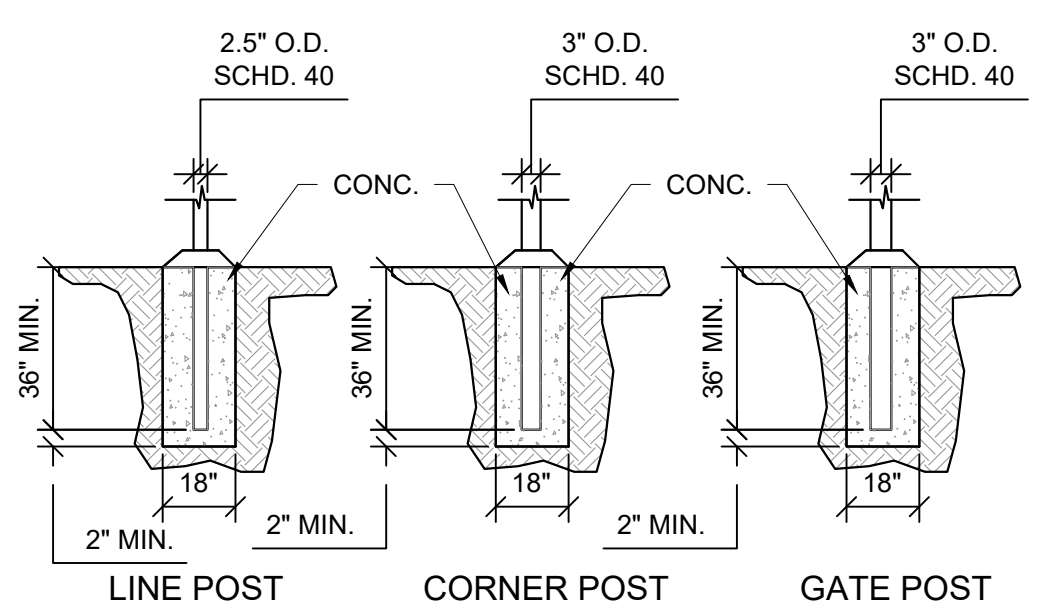
Ds4 SODDING DETAIL
NOT TO SCALE



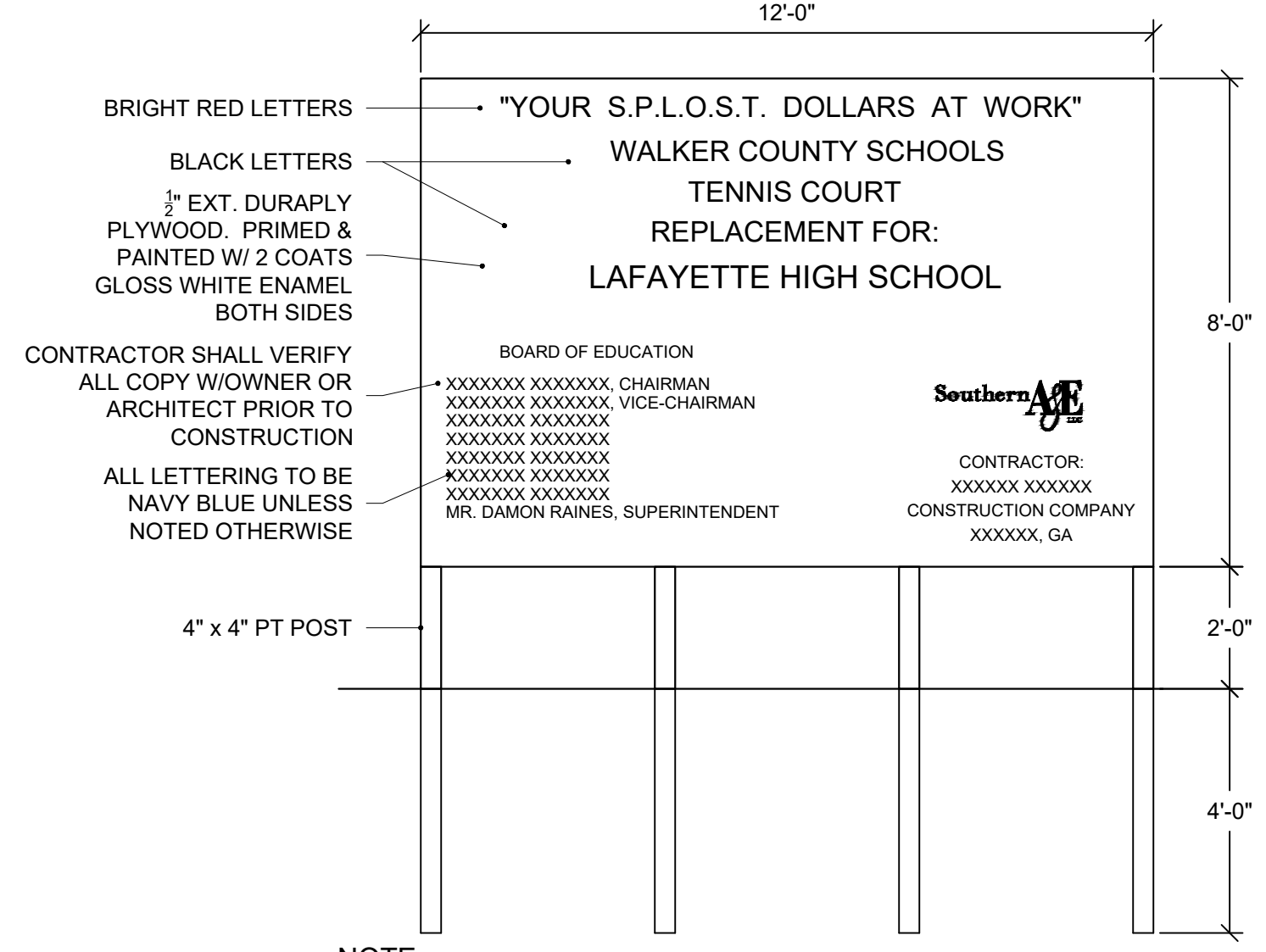
TYPICAL COURT PAVING SECTION
NOT TO SCALE



10' TENNIS COURT CHAIN LINK FENCE DETAIL
NOT TO SCALE



TENNIS COURT POST FOOTING DETAILS
NOT TO SCALE



JOB SIGN DETAIL
NOT TO SCALE

SA&E PROJECT NUMBER	01-920-024
BID PACKAGE	BP-1
ISSUED FOR CONSTRUCTION	05-02-2022
Southern A&E	
7951 Troon Circle Austell, Ga 30168 (770) 819-7777	REVISIONS R # Doc # Date 1 AD2 05-11-2022
architects & engineers	

FACILITY CODE NUMBER: 746-0198
**TENNIS COURT REPLACEMENT FOR:
 LAFAYETTE HIGH SCHOOL**
 5178 ROUND POND ROAD, LAFAYETTE, GA 30728
WALKER COUNTY SCHOOLS
 201 SOUTH DUKE STREET, LAFAYETTE, GA 30728

CONSTRUCTION/ ES & PC DETAILS

	DRAWING NUMBER
	C201