



St. Johns River Water Management District

Michael A. Register, P.E., Executive Director

4049 Reid Street • P.O. Box 1429 • Palatka, FL 32178-1429 • 386-329-4500 • www.sjrwmd.com

DATE: May 3, 2024
TO: Interested Firms
FROM: Breanna Pierce, Procurement Specialist
SUBJECT: Addendum 3 to Invitation for Bid 39449 – Installation of Transfer Switches at District Water Control Structures

As a result of questions received from potential respondents, please be advised of the following changes to the subject Invitation for Bid:

1. The time and date for the submittal of responses remains the same: **2:00 p.m., Thursday, May 9, 2024.**
2. **Question:** Do you have an estimated budget for this project?
Please refer to Section 7. BUDGET, “The estimated budget for the Work is \$45,000.”
3. **Question:** Is there a final and substantial completion time frame/days?
Please refer to the Draft Agreement, Section 1. TERM, (c) Completion Date, “The Completion Date of this Agreement is July 27, 2024.”
4. **Question:** I see that contractual liability is included under General Liability. Can this be negotiated out if awarded?
As stated in Attachment B – INSURANCE REQUIREMENTS, these are the District’s minimum insurance requirements and cannot be negotiated out of the Agreement.
5. **Question:** Do we need to supply power from another source during shutdown?
No, temporary power is not required during the shutdown.
6. **Question:** How long can these sites be without power?
It is expected that each site would be without power no longer than one-week (Monday-Friday). It is expected that this work would occur outside of any major storm event.
7. **Question:** Can we splice wires in ATS if they do not reach new terminals?
The District takes no exception to splicing the wires to reach the new terminals (if required).

GOVERNING BOARD

Rob Bradley, CHAIR
FLEMING ISLAND

Maryam H. Ghyabi-White, VICE CHAIR
ORMOND BEACH

J. Chris Peterson, SECRETARY
WINTER PARK

Cole Oliver, TREASURER
MERRITT ISLAND

Ryan Atwood
MOUNT DORA

Doug Bourmique
VERO BEACH

Douglas Burnett
ST. AUGUSTINE

Ron Howse
COCOA

Janet Price
FERNANDINA BEACH

8. **Question:** Can we get a cut sheet on the new ATS showing termination locations and size?

See Attachment A – ATS Spec Package.

9. **Question:** Will this require any permitting?

Permitting is not required.

NOTE: Please acknowledge receipt of this Addendum in your submittal.

If you have any questions regarding this addendum, contact Breanna Pierce at (386) 643-1168 or via email at bpierce@sjrwmd.com.

Attachments:

Attachment A – ATS Spec Package

ATTACHMENT A – ATS SPEC PACKAGE

(Starts on following page.)

TX Series Transfer Switch

TXC-100

Automatic Transfer Switch Controller

- Automatic Transfer Switch Controller
- Up to 480 VAC, 50/60 Hz
- Single and Three Phase
- cETLus Recognized Component
- Tested to UL 1008



Image used for illustration purposes only

Codes and Standards

Not all codes and standards apply to all configurations. Contact factory for details.



cETLus Recognized per UL 1008



NFPA 37, 70, 99, 110



NEC 700, 701, 702, 708

Description

Generac's TXC-100 microprocessor based controller provides customers with the flexibility to program a comprehensive group of set points to match the application needs. The controller has 2 programmable inputs and 1 programmable output as standard and is available with an optional expansion board for up to 4 programmable inputs and outputs. The LCD displays real time and historical information with time-stamped events. The integrated plant exerciser can be configured in off, daily, day of week, biweekly, and monthly intervals with user selectable run time. Standard features of the controller include three phase sensing on both sources, phase unbalance, phase reversal, emergency inhibit, and communications.

TX Series Transfer Switch

TXC-100

Automatic Transfer Switch Controller

STANDARD FEATURES

GENERAL

- Graphical LCD-Based Display for Programming, System Diagnostics and Help Menu Display Mimic Diagram with Source Available and Connected LED Indicator
- Time-Stamped Event History Log
- Programmable Exerciser - Daily, Weekly, Bi-Weekly, Monthly
- Methods of Transfer Include: Open with Inphase Transition Only, Time Delay in Neutral Transition, or Inphase with a Default to Time Delay in Neutral Transfer
- Modbus® RTU Communications
- Operating Temperature -4 ° to 158 °F (-20 ° to 70 °C)
- Voltage Agnostic*
- Integrated Anti-condensation Heater Control
- Auxiliary Output Includes: 2WS, SB4T, Fault, and a Programmable Relay Output
- Auxiliary Input Includes: Permissive and Loadshed Inputs (24 VDC)
- Expandable Input/Output Board Module Includes: 4 Relay Outputs and 4 Optically Isolated Inputs
- Front Programmable Control Reduces PPE Needs and Arc Flash Hazard

- Built in Battery Backup - Increases Switch Reliability and Reduces Switch Transition Time to Alternate Source
- Rechargeable Lithium-ion Battery Backup Able to Power the Controller for up to 60 Minutes in the Event of No Source Availability
- Accessible USB Port for Easy Data Downloads, Firmware Updates without Requiring PPE, Reducing the Risk of Arc Flash
- All Amp Nodes Offered with Delayed Transition
- General Alarm Indication
- Heater Programmable through Control for Desired Temperature and Humidity Settings
- Front Accessible Customer Connections and Battery without Arc Flash Exposure
- Auxiliary Generator Battery Backup for Controller

VOLTAGE AND FREQUENCY SENSING

- Three Phase Under and Over Voltage Sensing on Normal and Emergency Sources
- Under and Over Frequency Sensing on Normal and Emergency
- Selectable Settings: Single or Three Phase Voltage
- Sensing on Normal, Emergency and Load 50 or 60 Hz
- Phase Sequence Sensing for Phase Sensitive Loads

PROGRAMMABLE I/O PARAMETERS

Outputs:

- Source 1 – Two Wire Start
- Source 2 – Two Wire Start
- Engine Exercising
- Engine Warmup
- Signal Before Transfer (Elevator Contact)
- General Alarm
- Source 1 Good
- Source 2 Good

Inputs:

- Permissive (Emergency Inhibit)
- Remote Engine Fast Test
- Remote Engine Normal Test
- ATS Timer
- Initiate Demand Response

* 480 V Delta Must be Specified at Time of Ordering for Transformer Kit to be Included

AVAILABLE OPTIONS

- Chicago Code Kit
- 3R Padlockable Cover for Controller (Standard on 3R Enclosure)
- Emergency Inhibit
- Selectable Retransfer
- Manual Generator Retransfer
- Type 1 to 3R Conversion Kit
- Heater Option for Temperature and Humidity Control (Standard on 3R Enclosure)
- Input/Output (I/O) Module
- Current Measurements**
- Power in kW**
- Power Factor**

** When Equipped with Current Transformers

TX301 Series Transfer Switch

100 – 400 Amps

Contactors Type · Open and Delayed Transition · Service Entrance Rated

- Automatic Transfer Switch
- 100 – 400 A, up to 480 VAC, 60 Hz, 100% Current Rated
- Single or Three Phase
- 2, 3, or 4 Poles
- UL Type 1 or Type 3R
- Open and Inphase or Open with Delayed Transition
- ETL Listed to UL 1008
- High Withstand and Closing Ratings



Image used for illustration purposes only

Codes and Standards



ETL Listed



NFPA 70, 99, 110



NEC 700, 701, 702, 708



osHPD

OSHPD and Seismic Certified CBC
2019, CBC 2016, IBC 2018, IBC 2015,
IBC 2012, IBC 2009, ASCE 7-10,
ASCE 7-16, ICC-ES AC-156

Description

Generac's patented* contactor is featured in the TX contactor type transfer switch, which is a double-throw robust switch construction with inherent interlocks for safe positive transfer between power sources. Featuring a transition time of less than 20 milliseconds, this high speed transfer is ideal for all applications, including motor load applications. The contacts are silver composite for long life, resisting pitting or burning. The switches are rated for full load transfers in mission critical, emergency, legally required, and optional power systems.

The microprocessor based controller provides the customers with the flexibility to program a comprehensive group of set points to match the application needs. The controller has two programmable inputs and one programmable output as standard and is available with optional expansion boards for up to four programmable inputs and outputs. The LCD displays real time and historical information with time-stamped events. The integrated plant exerciser can be configured in off, daily, day of week, biweekly, and monthly intervals with user selectable run time. Standard features of the controller include three phase sensing on both sources, phase unbalance, phase reversal, load shed, emergency inhibit, and communications.

*Patent Number: US 11,227,728 B2

TX301 Series Transfer Switch

100 – 400 Amps

Contactors Type · Open and Delayed Transition · Service Entrance Rated

STANDARD FEATURES

GENERAL

- Small Footprint, Results in Easy Mounting and Installation for Reduced Time and Costs
- Cable Entry is Top or Bottom (400A Units are Bottom Only)
- Double-Throw, Stored Energy Transfer Mechanism
- Can be Electrically Isolated while Energized
- Graphical LCD-Based Display for Programming, System Diagnostics and Help Menu Display Mimic
- Diagram with Source Available and Connected LED Indicator
- Method of Transfer: Open with Inphase Transition
- Mechanically Interlocked to Prevent Connection of Both Sources
- Modbus® RTU Communications
- TXC 100 Controller
- Operating Temperature -4 ° to 158 °F (-20 ° to 70 °C)
- Removable Top and Bottom Plates for Ease of Entry
- Voltage Agnostic*
- High Withstand and Closing Ratings
- Heater Kit Standard on All 3R Enclosures
- Auxiliary Output Includes: Two Wire Start, Signal Before Transfer, Fault, and a Programmable Relay Output
- Auxiliary Input Includes: Permissive Inputs (24 VDC)
- General Alarm Indication
- 2 Year Standard Warranty
- IBC 2018, 2015, 2012, 2009

VOLTAGE AND FREQUENCY SENSING

- Three Phase Under and Over Voltage Sensing on Normal and Emergency Sources
- Under and Over Frequency Sensing on Normal and Emergency
- Selectable Settings: Single or Three Phase Voltage
- Sensing on Normal, Emergency and Load 60 Hz
- Phase Sequence Sensing for Phase Sensitive Loads

Start Circuit

- 2-Wire Start
- 3-Wire Start From C Contact for Circuit Monitoring

Digital Outputs

- Signal Before Transfer (Elevator)
- General Alarm

Digital Inputs

- Emergency Inhibit (Permissive & Load Shed)
- Go to Emergency (Demand Response)
- Manual Generator Retransfer

CONTROLS

- Front Programmable Control Reduces PPE Needs and Arc Flash Hazard
- Built in Battery Backup - Increases Switch Reliability and Reduces Switch Transition Time to Alternate Source
- Battery Backup Able to Power the Controller for up to 60 Minutes in the Event of No Source Availability
- Accessible USB Port for Easy Data Downloads, Firmware Updates without Requiring PPE, Reducing the Risk of Arc Flash
- All Amp Nodes Offered with Delayed Transition
- Heater Programmable through Control for Desired Temperature and Humidity Settings
- Front Accessible Customer Connections
- Time-Stamped Event History Log
- Programmable Exerciser - Daily, Weekly, Bi-Weekly, Monthly

* 480 V 3-Wire Systems Must be Specified at Time of Ordering for Transformer Kit to be Included

CONFIGURABLE OPTIONS

- Chicago Code Kit
- 3R Padlockable Cover for Controller (Standard on 3R Enclosure)
- 3R Padlockable Cover for Service Entrance Breaker (Standard on 3R Enclosures)
- CTs for Integrated Metering
- Generator Battery Backup for Controller
- Heater Option for Temperature and Humidity Control (Standard on 3R Enclosure)
- Time Delay in Neutral Transition (TDN), or Inphase with a Default to Time Delay in Neutral Transfer
- Expandable Input/Output Board Module Includes: 4 Relay Outputs and 4 Optically Isolated Inputs
- IBC Seismic Certified/Seismic Rated
- 2 Year Extended Limited Warranty
- 5 Year Basic Limited Warranty
- 5 Year Extended Limited Warranty
- 7 Year Extended Limited Warranty
- 10 Year Extended Limited Warranty

Engineered Options

- Transient Voltage Surge Suppressor (TVSS)
- Manual Generator Retransfer Switch
- Go to Emergency Switch

Conversion Kits

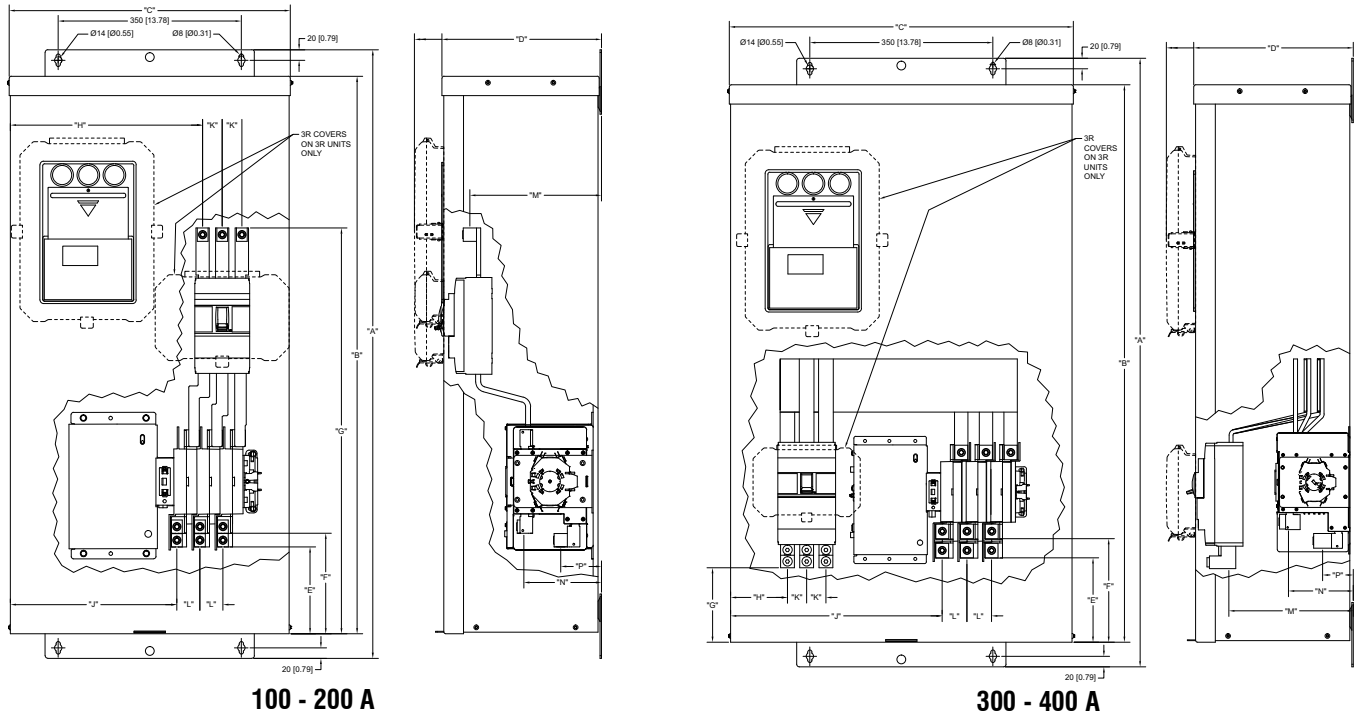
- 480 V Transformer Kit for 3-Wire Systems
- UL Type 1 to Type 3R Kit

TX301 Series Transfer Switch

100 – 400 Amps

Contactor Type · Open and Delayed Transition · Service Entrance Rated

UNIT DIMENSIONS*



100 - 200 A

300 - 400 A

Service Entrance Rated, Contactor Type, Open and Delayed Transition, 100 – 400 A

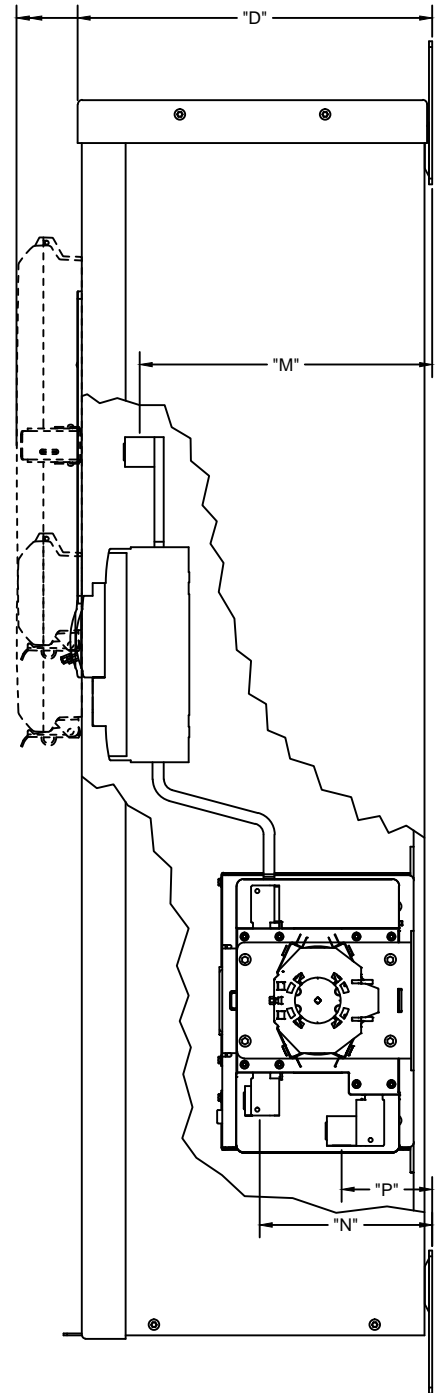
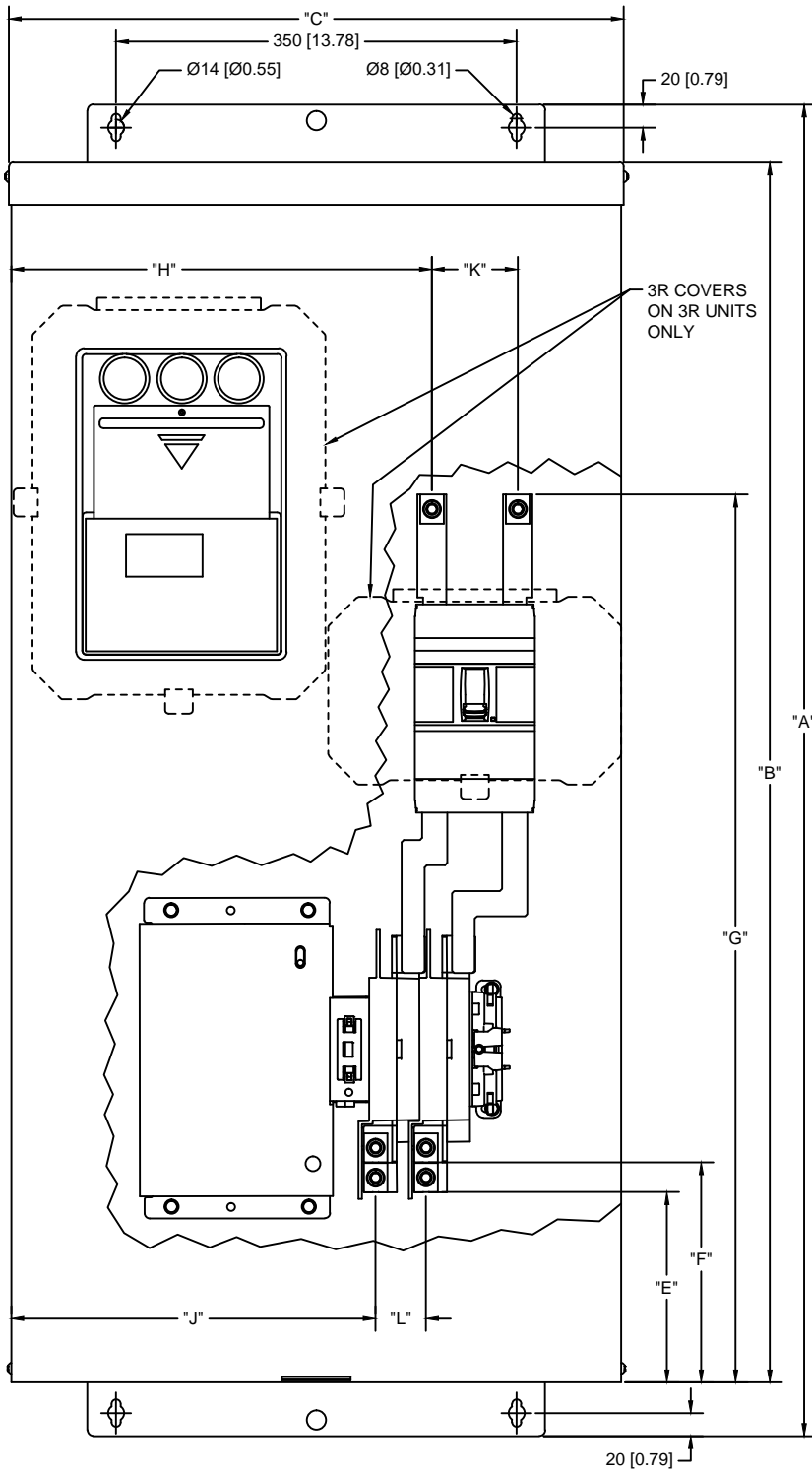
Description	in (mm)														Cu/Al					Weight
	A (Height)	B (Height)	C (Width)	D (Depth)	E (Dim)	F (Dim)	G (Dim)	H (Dim)	J (Dim)	K† (Dim)	L (Dim)	M (Dim)	N (Dim)	P (Dim)	Normal 75 °C Wire	Standby Source 75 °C Wire	Load 75 °C Wire	Neutral Connection	Ground Connection	
100A SER TYPE 1	51.3 (1,303)	47.5 (1,206)	21.2 (538)	12.0 (305)	9.5 (242)	10.6 (268)	38.3 (973)	14.5 (369)	12.6 (320)	1.5 (38)	1.7 (44)	10.1 (257)	5.8 (148)	3.1 (79)	(1) 3/0 - 6	(1) 2/0 - 14	(1) 2/0 - 14	(5) 2/0 - 14	(6) 2/0 - 14	154.3 (70)
100A SER TYPE 3R	51.3 (1,303)	47.5 (1,206)	21.2 (538)	13.9 (355)	9.5 (242)	10.6 (268)	38.3 (973)	14.5 (369)	12.6 (320)	1.5 (38)	1.7 (44)	10.1 (257)	5.8 (148)	3.1 (79)	(1) 3/0 - 6	(1) 2/0 - 14	(1) 2/0 - 14	(5) 2/0 - 14	(6) 2/0 - 14	158.7 (72)
150A SER TYPE 1	51.3 (1,303)	47.5 (1,206)	21.2 (538)	12.0 (305)	9.9 (253)	10.9 (279)	38.3 (973)	14.5 (369)	12.6 (320)	1.5 (38)	1.7 (44)	10.1 (257)	5.8 (148)	3.3 (84)	(1) 250 - 6	(1) 250 - 6	(1) 250 - 6	(5) 350 - 6	(5) 350 - 6	165.3 (75)
150A SER TYPE 3R	51.3 (1,303)	47.5 (1,206)	21.2 (538)	13.9 (355)	9.9 (253)	10.9 (279)	38.3 (973)	14.5 (369)	12.6 (320)	1.5 (38)	1.7 (44)	10.1 (257)	5.8 (148)	3.3 (84)	(1) 250 - 6	(1) 250 - 6	(1) 250 - 6	(5) 350 - 6	(5) 350 - 6	169.8 (77)
200A SER TYPE 1	51.3 (1,303)	47.5 (1,206)	21.2 (538)	12.0 (305)	9.9 (253)	10.9 (279)	38.3 (973)	14.5 (369)	12.6 (320)	1.5 (38)	1.7 (44)	10.1 (257)	5.8 (148)	3.3 (84)	(1) 250 - 6	(1) 250 - 6	(1) 250 - 6	(5) 350 - 6	(5) 350 - 6	165.3 (75)
200A SER TYPE 3R	51.3 (1,303)	47.5 (1,206)	21.2 (538)	13.9 (355)	9.9 (253)	10.9 (279)	38.3 (973)	14.5 (369)	12.6 (320)	1.5 (38)	1.7 (44)	10.1 (257)	5.8 (148)	3.3 (84)	(1) 250 - 6	(1) 250 - 6	(1) 250 - 6	(5) 350 - 6	(5) 350 - 6	169.8 (77)
300A SER TYPE 1	51.4 (1,305)	47.5 (1,206)	33.9 (860)	12.0 (305)	9.9 (253)	11.7 (297)	9.0 (228)	7.6 (192)	22.1 (562)	1.8 (46)	2.3 (59)	8.7 (222)	6.5 (166)	3.3 (84)	(2) 600 - 2/0	(1) 600 - 4 or (2) 250 - 1/0	(1) 600 - 4 or (2) 250 - 1/0	(5) 600 MCM - 4 or (10) 250 MCM - 1/0	(5) 350 - 6	260.1 (118)
300A SER TYPE 3R	51.4 (1,305)	47.5 (1,206)	33.9 (860)	13.9 (355)	9.9 (253)	11.7 (297)	9.0 (228)	7.6 (192)	22.1 (562)	1.8 (46)	2.3 (59)	8.7 (222)	6.5 (166)	3.3 (84)	(2) 600 - 2/0	(1) 600 - 4 or (2) 250 - 1/0	(1) 600 - 4 or (2) 250 - 1/0	(5) 600 MCM - 4 or (10) 250 MCM - 1/0	(5) 350 - 6	264.6 (120)
400A SER TYPE 1	51.4 (1,305)	47.5 (1,206)	33.9 (860)	12.0 (305)	9.9 (253)	11.7 (297)	9.0 (228)	7.6 (192)	22.1 (562)	1.8 (46)	2.3 (59)	8.7 (222)	6.5 (166)	3.3 (84)	(2) 600 - 2/0	(1) 600 - 4 or (2) 250 - 1/0	(1) 600 - 4 or (2) 250 - 1/0	(5) 600 MCM - 4 or (10) 250 MCM - 1/0	(5) 350 - 6	260.1 (118)
400A SER TYPE 3R	51.4 (1,305)	47.5 (1,206)	33.9 (860)	13.9 (355)	9.9 (253)	11.7 (297)	9.0 (228)	7.6 (192)	22.1 (562)	1.8 (46)	2.3 (59)	8.7 (222)	6.5 (166)	3.3 (84)	(2) 600 - 2/0	(1) 600 - 4 or (2) 250 - 1/0	(1) 600 - 4 or (2) 250 - 1/0	(5) 600 MCM - 4 or (10) 250 MCM - 1/0	(5) 350 - 6	264.6 (120)

† K Dimension for 100-200A 2-Pole Configuration is 3 (75). K Dimension for 300-400A 2-Pole Configuration is 3.6 (92)

UL 1008 Withstand and Closing Ratings

Ampere Rating	Specific Breaker (kA)**	Service Entrance (kA)	Fuse Rating (Class J)	Fuse Size
100	35	35	35 kA	200 A
150	42	42	100 kA	200 A
200	42	42	100 kA	200 A
300	65	65	100 kA	400 A
400	65	65	100 kA	400 A

* All measurements are approximate and for estimation purposes only. Specification characteristics may change without notice. Please contact a Generac Power Systems Industrial Dealer for detailed installation drawings.
** See Specific Breaker List available on GENconnect.

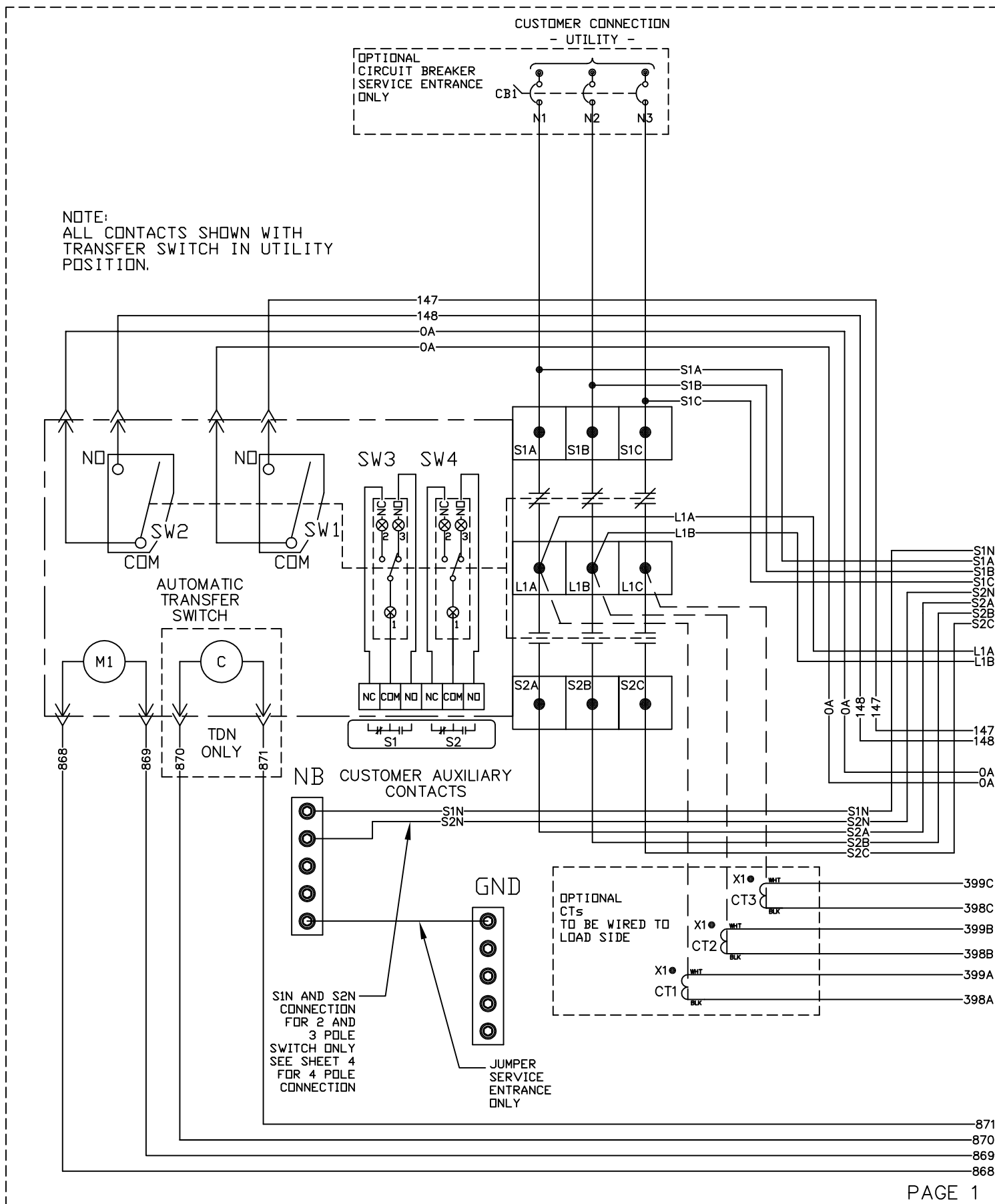


ALL DIMENSION ARE: mm [inches]

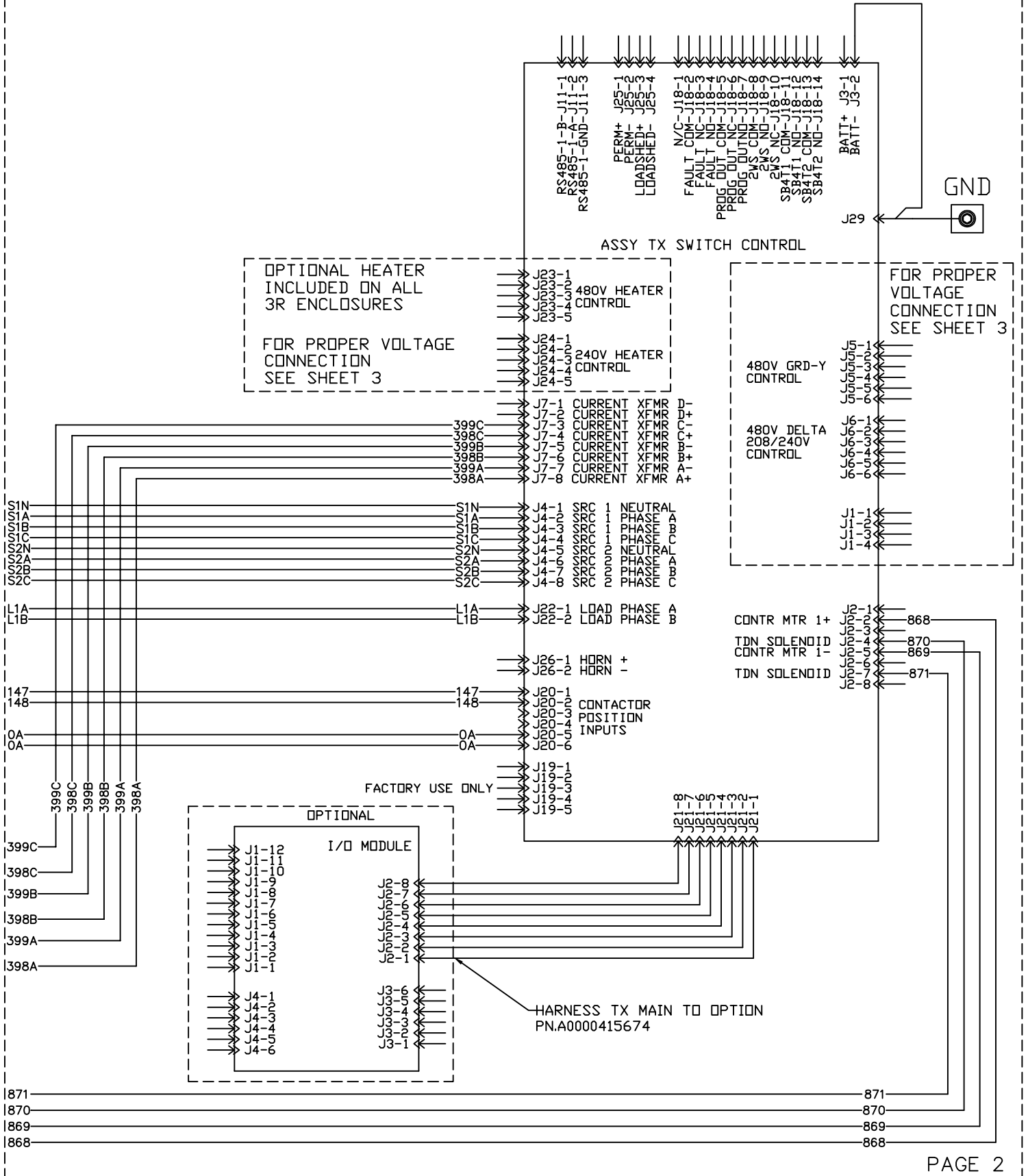
DESCRIPTION	HEIGHT "A"	HEIGHT "B"	WIDTH "C"	DEPTH "D"	DIM "E"	DIM "F"	DIM "G"	DIM "H"	DIM "J"	DIM "K"	DIM "L"	DIM "M"	DIM "N"	DIM "P"	WEIGHT
100A SER NEMA 1	1303	1206	538	305	242	268	973	369	320	75	44	257	148	79	70kg
	[51.31]	[47.47]	[21.16]	[12.00]	[9.54]	[10.56]	[38.29]	[14.54]	[12.61]	[2.95]	[1.73]	[10.10]	[5.84]	[3.11]	154.0lbs
100A SER NEMA 3R	1303	1206	538	355	242	268	973	369	320	75	44	257	148	79	72kg
	[51.31]	[47.47]	[21.16]	[13.99]	[9.54]	[10.56]	[38.29]	[14.54]	[12.61]	[2.95]	[1.73]	[10.10]	[5.84]	[3.11]	158.4lbs
150A SER NEMA 1	1303	1206	538	305	253	279	973	369	320	75	44	257	153	83	75kg
	[51.31]	[47.47]	[21.16]	[12.00]	[9.96]	[10.98]	[38.29]	[14.54]	[12.61]	[2.95]	[1.73]	[10.10]	[6.04]	[3.26]	165.0lbs
150A SER NEMA 3R	1303	1206	538	355	253	279	973	369	320	75	44	257	153	83	77kg
	[51.31]	[47.47]	[21.16]	[13.99]	[9.96]	[10.98]	[38.29]	[14.54]	[12.61]	[2.95]	[1.73]	[10.10]	[6.04]	[3.26]	169.4lbs
200A SER NEMA 1	1303	1206	538	305	253	279	973	369	320	75	44	257	153	83	75kg
	[51.31]	[47.47]	[21.16]	[12.00]	[9.96]	[10.98]	[38.29]	[14.54]	[12.61]	[2.95]	[1.73]	[10.10]	[6.04]	[3.26]	165.0lbs
200A SER NEMA 3R	1303	1206	538	355	253	279	973	369	320	75	44	257	153	83	77kg
	[51.31]	[47.47]	[21.16]	[13.99]	[9.96]	[10.98]	[38.29]	[14.54]	[12.61]	[2.95]	[1.73]	[10.10]	[6.04]	[3.26]	169.4lbs

REVISION: D
REVISION DATE: 10/06/2020

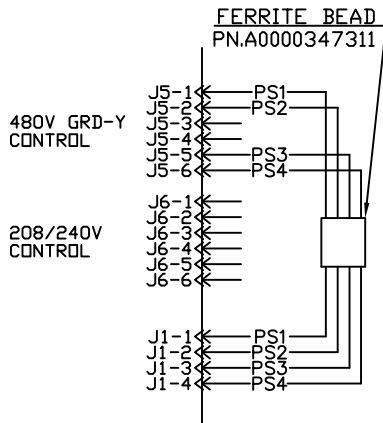
ID TX SWITCH SERVICE ENTRANCE 2-POLE 100A-200A
A0000430681 (DRAWING: A0000561085)
NOT TO SCALE



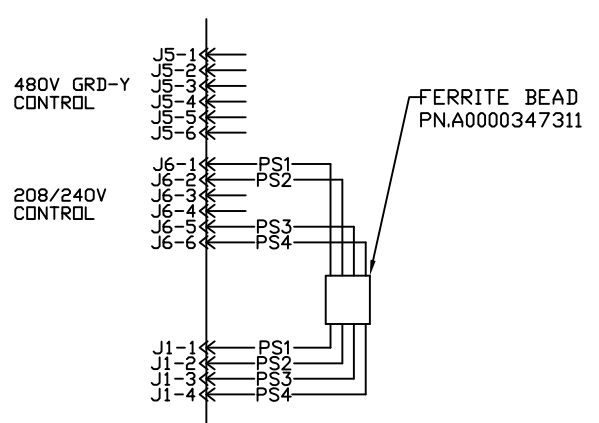
IF AN EXTERNAL 12/24V POWER SUPPLY IS PROVIDED, THE JUMPER BETWEEN J29 AND J3-2 IS TO BE REMOVED AND DISCARDED. THIS EXTERNAL POWER SUPPLY MUST BE CHASSIS GROUNDED. THE LOCAL CHASSIS GROUND WIRE MUST BE RE-ATTACHED TO J29.



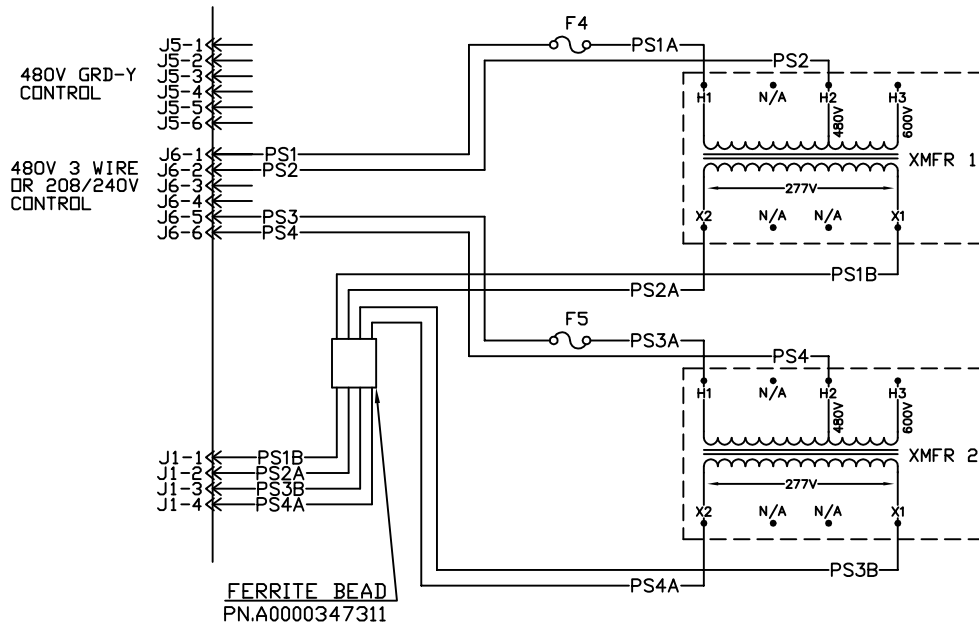
480V GRD-Y CONTROL



208/240V CONTROL

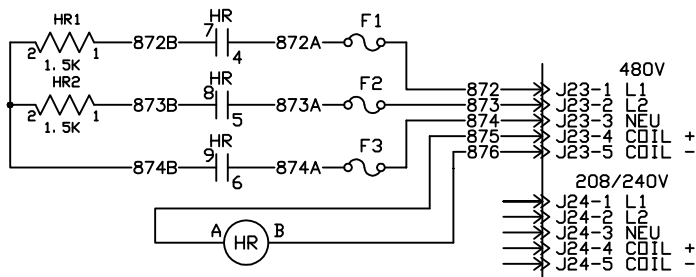


480V 3 WIRE CONNECTION WITH TRANSFORMERS



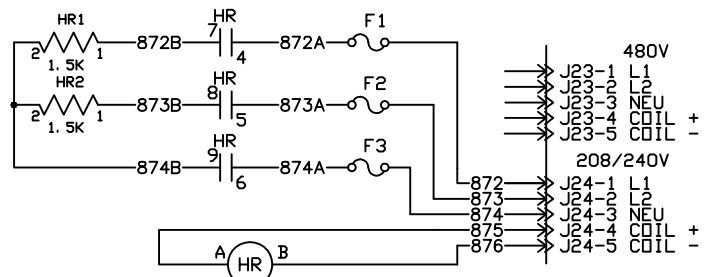
480V HEATER CONTROL

OPTIONAL HEATER INCLUDED ON ALL 3R ENCLOSURES

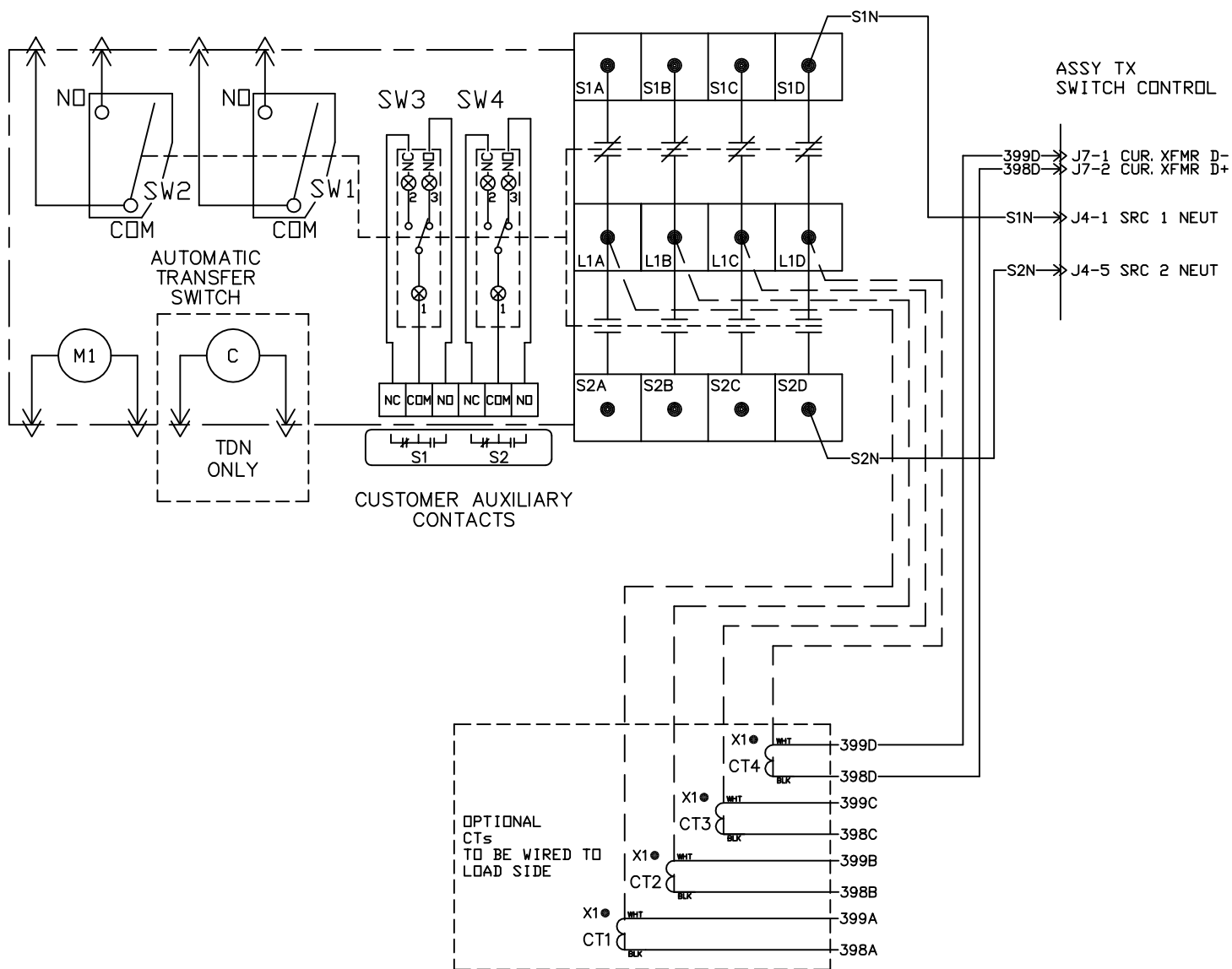


208/240V HEATER CONTROL

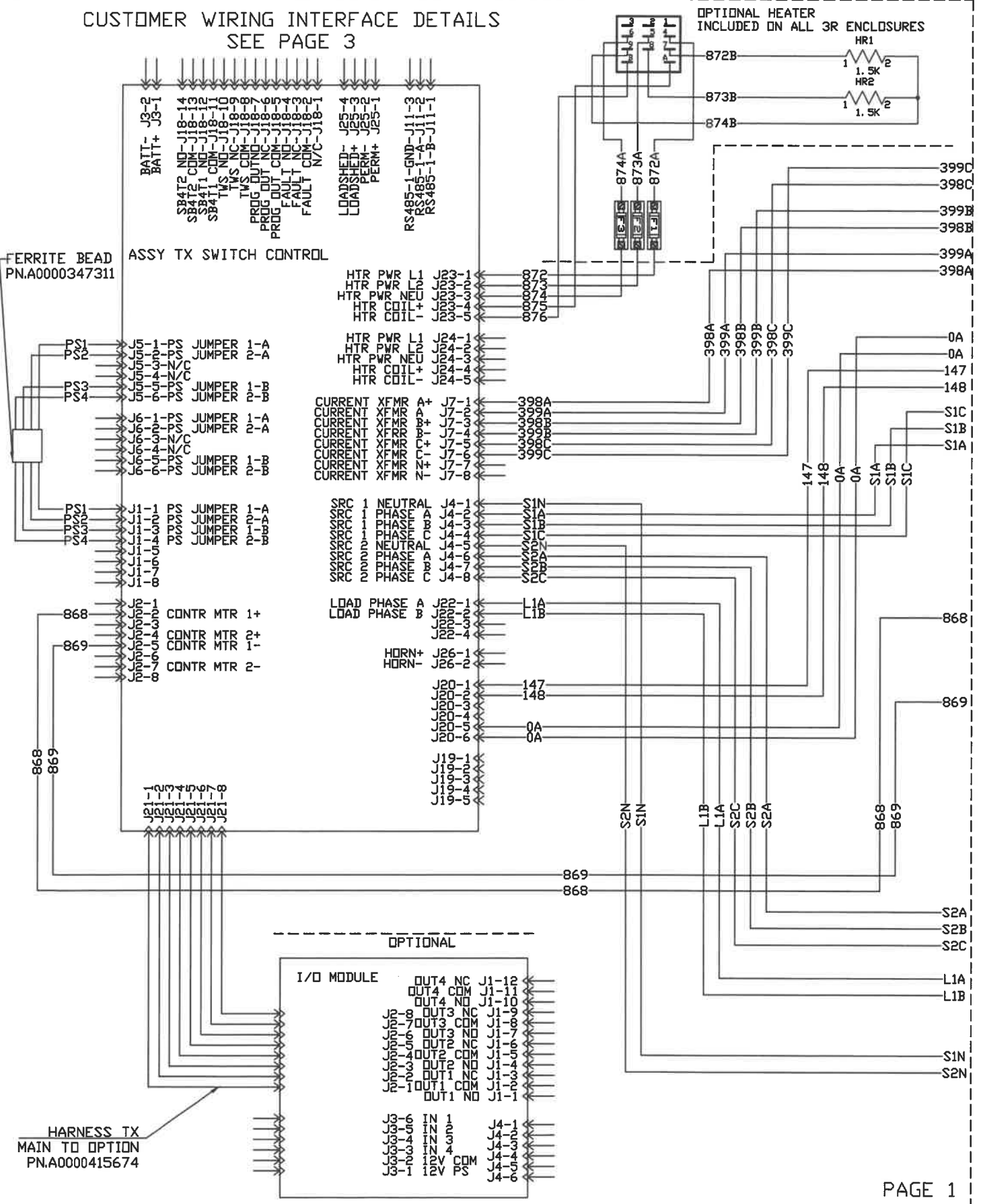
OPTIONAL HEATER INCLUDED ON ALL 3R ENCLOSURES



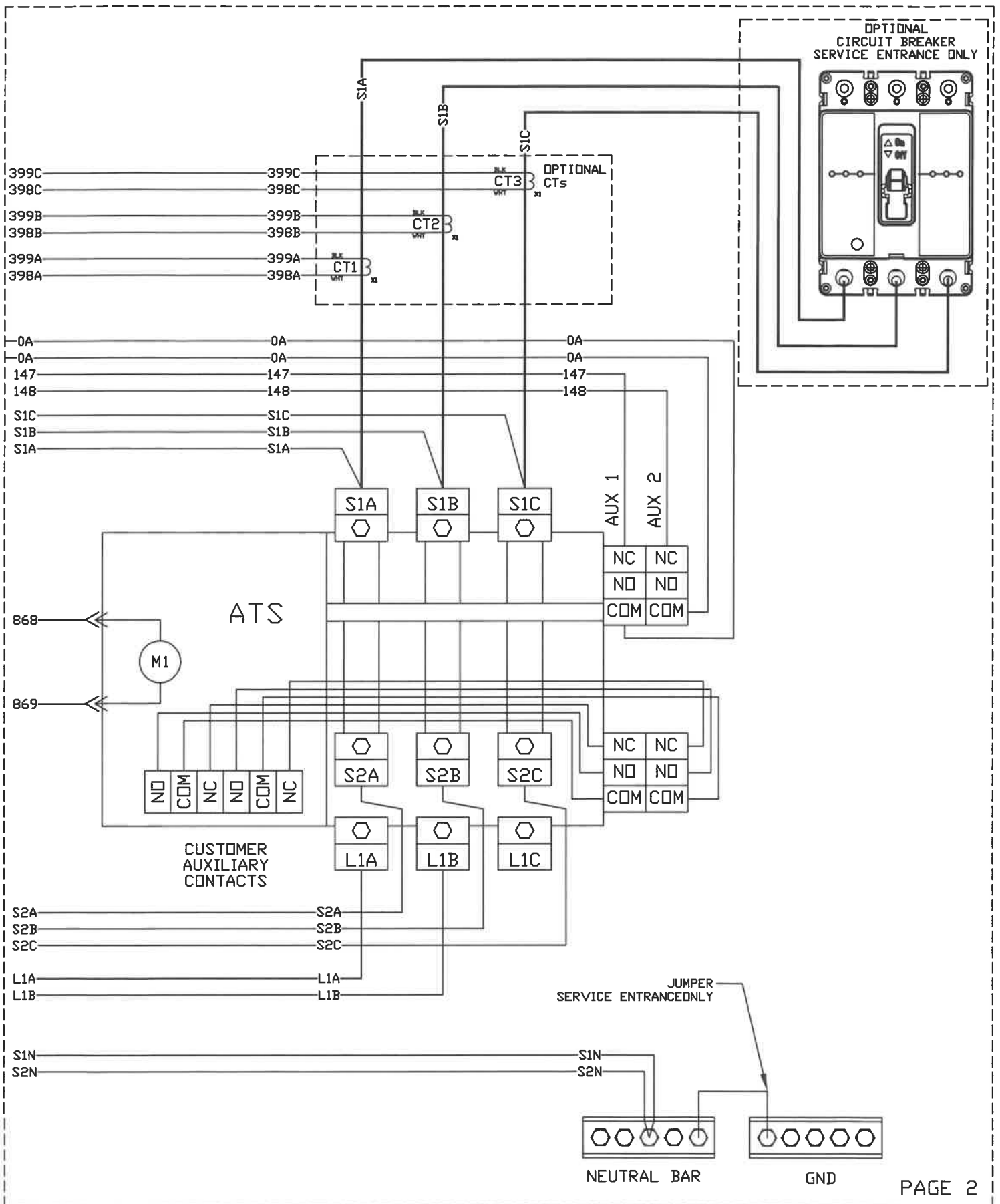
4 POLE SWITCHED NEUTRAL CONNECTIONS



CUSTOMER WIRING INTERFACE DETAILS SEE PAGE 3



GROUP G

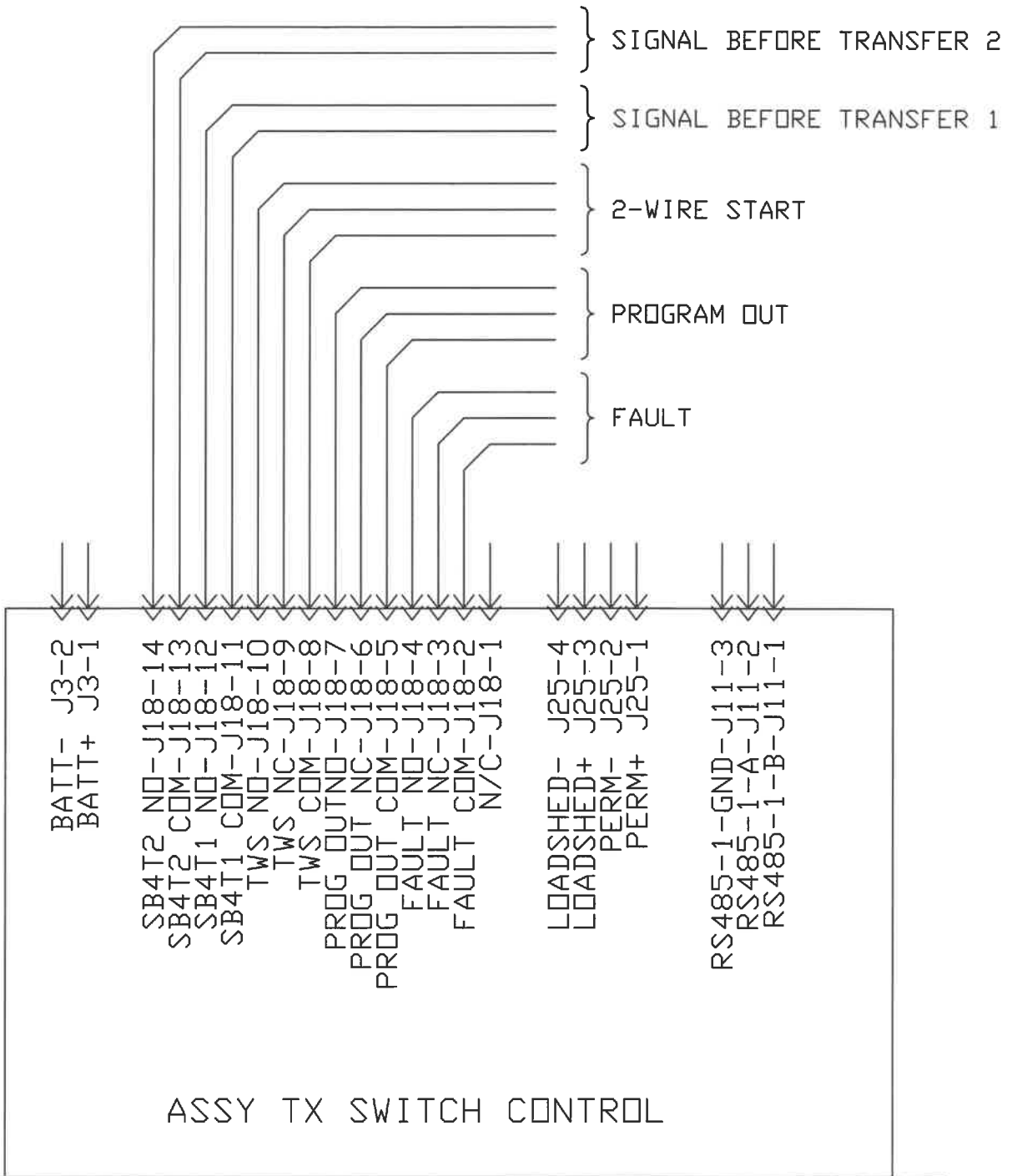


PAGE 2

REVISION: A
DATE: 1/29/20

PAGE 2 OF 2

WIRING - DIAGRAM
TX CONTROL TRANSFER SW
DRAWING #: A0000347534



THIS PAGE INTENTIONALLY LEFT BLANK.

Generac Power Systems 2 Year (2B) Limited Warranty for Industrial Transfer Switch Systems

For the period of warranty noted below, which begins upon the successful start-up and/or on-line activation/registration of the unit, Generac Power Systems, Inc. "Generac" warrants that its transfer switch will be free from defects in material and workmanship for the items and period set forth below. Generac will, at its discretion, repair or replace any part(s) which, upon evaluation, inspection and testing by Generac or an Independent Authorized Service Dealer, is found to be defective. Any equipment that the purchaser/owner claims to be defective must be evaluated by the nearest Independent Authorized Service Dealer.

Warranty Coverage in Year(s): 1	Warranty Coverage in Year(s): 2
Parts, Labor and Limited Travel	Limited Parts Only

Guidelines:

- | | |
|--|--|
| <ol style="list-style-type: none"> 1. Unit must be registered and proof of purchase available. 2. Any and all warranty repairs and/or concerns must be performed and/or addressed by an Independent Authorized Service Dealer, or branch thereof. Repairs or diagnostics performed by individuals other than Independent Authorized Service Dealers not authorized in writing by Generac will not be covered. 3. Warranty is transferable between ownership of original installation site. 4. Generac may choose to repair, replace or refund a piece of equipment in its sole discretion. 5. Warranty only applies to permanently wired and mounted units. | <ol style="list-style-type: none"> 6. Enclosures are warranted for the first year of ownership only. Damage caused after receipt of generator is the responsibility of the owner and is not covered by this warranty. Nicks, scrapes, dents or scratches to the painted enclosure should be repaired promptly by the owner. 7. Proof of performance of all required maintenance must be available. 8. Travel allowance is limited to 300 miles maximum or seven and a half (7.5) hours maximum (per occurrence, whichever is less) round trip from the nearest Independent Authorized Service Dealer. Any additional travel required will not be covered. |
|--|--|

The following will NOT be covered by this warranty:

- | | |
|---|---|
| <ol style="list-style-type: none"> 1. Costs of normal maintenance (i.e. associated part(s), adjustments, installation or start-up). 2. Damage to the transfer switch system caused by accidents, shipping, handling or improper storage. 3. Damage/failures caused by operation with loads or installations other than what's recommended or specified by Generac. Unauthorized modification/misapplication will not be warranted unless authorized by Generac in writing. 4. Rental equipment used while warranty repairs are being performed and/or any extraordinary equipment used for removal and/or reinstallation of transfer switch (i.e. cranes, hoists, lifts, et. al.). 5. Planes, ferries, railroad, buses, helicopters, snowmobiles, snow-cats, off-road vehicles or any other mode of transport deemed not standard by Generac. 6. Failures due to normal wear and tear, accident, misuse, abuse, neglect, improper installation, or improper sizing. 7. Damage to any covered components or consequential damages caused by the use of a non-OEM part will not be covered by this warranty. 8. Damage related to rodent, reptile, and/or insect infestation. 9. Repairs or diagnostics performed by individuals other than Independent Authorized Service Dealers not authorized in writing by Generac. | <ol style="list-style-type: none"> 10. Steel enclosures that rust as a result of improper installation, location in a harsh or salt water environment, or are scratched where the integrity of applied paint is compromised. 11. Fuses, light bulbs and any related labor. 12. Units sold, rated or used for "Prime Power," "Trailer Mounted" or "Rental Unit" applications as defined by Generac. Contact an Independent Authorized Service Dealer for definitions. 13. Failures caused by any act of God or external cause including without limitation, fire, theft, freezing, war, lightning, earthquake, windstorm, hail, water, tornado, hurricane, or any other matters which are reasonably beyond the manufacturer's control. 14. Shipping costs associated with expedited shipping. 15. Any incidental, consequential or indirect damages caused by defects in materials or workmanship, or any delay in repair or replacement of the defective part(s). 16. Any unit built/manufactured prior to 2014 models. 17. Overtime, holiday or emergency labor. 18. Living or travel expenses of person(s) performing service, except as specifically included within the terms of a specific unit warranty period. |
|---|---|

THIS WARRANTY SUPERSEDES ALL OTHER WARRANTIES, EXPRESSED OR IMPLIED. SPECIFICALLY, GENERAC MAKES NO OTHER WARRANTIES AS TO MERCHANTABILITY OR FITNESS FOR A PARTICULAR PURPOSE. ANY IMPLIED WARRANTIES WHICH ARE ALLOWED BY LAW, SHALL BE LIMITED IN DURATION TO THE TERMS OF THE EXPRESS LIMITED WARRANTY PROVIDED HEREIN. SOME JURISDICTIONS DO NOT ALLOW LIMITATIONS ON HOW LONG AN IMPLIED WARRANTY LASTS, SO THE ABOVE LIMITATION MAY NOT APPLY TO YOU. GENERAC'S ONLY LIABILITY SHALL BE THE REPAIR OR REPLACEMENT OF PART(S) AS STATED ABOVE. IN NO EVENT SHALL GENERAC BE LIABLE FOR ANY INCIDENTAL OR CONSEQUENTIAL DAMAGES, EVEN IF SUCH DAMAGES ARE A DIRECT RESULT OF GENERAC'S NEGLIGENCE. SOME JURISDICTIONS DO NOT ALLOW THE EXCLUSION OR LIMITATION OF INCIDENTAL OR CONSEQUENTIAL DAMAGES, SO THE ABOVE LIMITATION MAY NOT APPLY TO YOU. THIS WARRANTY GIVES YOU SPECIFIC LEGAL RIGHTS. YOU COULD ALSO HAVE OTHER RIGHTS UNDER APPLICABLE LAW.

FOR AUSTRALIA ONLY: Our goods come with guarantees that cannot be excluded under the Australian Consumer Law. You are entitled to a replacement or refund for a major failure and for compensation for any other reasonably foreseeable loss or damage. You are also entitled to have the goods repaired or replaced if the goods fail to be of acceptable quality and the failure does not amount to a major failure.

FOR NEW ZEALAND ONLY: Nothing in this warranty statement excludes, restricts or modifies any condition, warranty right or remedy which pursuant to the New Zealand Legislation (Commonwealth or State) including the Fair Trading Practices Act of 1986 or the Consumer Guarantees Act 1993 ("CGA") applies to this limited warranty and may not be so excluded, restricted or modified. Nothing in this statement is intended to have the effect of contracting out of the provisions of the CGA, except to the extent permitted by that Act, and these terms are to be modified to the extent necessary to give effect to that intention. If you acquire goods from Generac Power Systems or any of its authorized resellers and distributors for the purposes of a business, then pursuant to section 43(2) of the CGA, it is agreed that the provisions of the CGA do not apply.

**GENERAC POWER SYSTEMS, INC. • P.O. BOX 8 • Waukesha, WI, USA 53187
Ph: (888) GENERAC (436-3722) • Fax: (262) 544-4851**

To locate the nearest Independent Authorized Service Dealer and to download schematics, exploded views and parts lists visit our website: www.generac.com