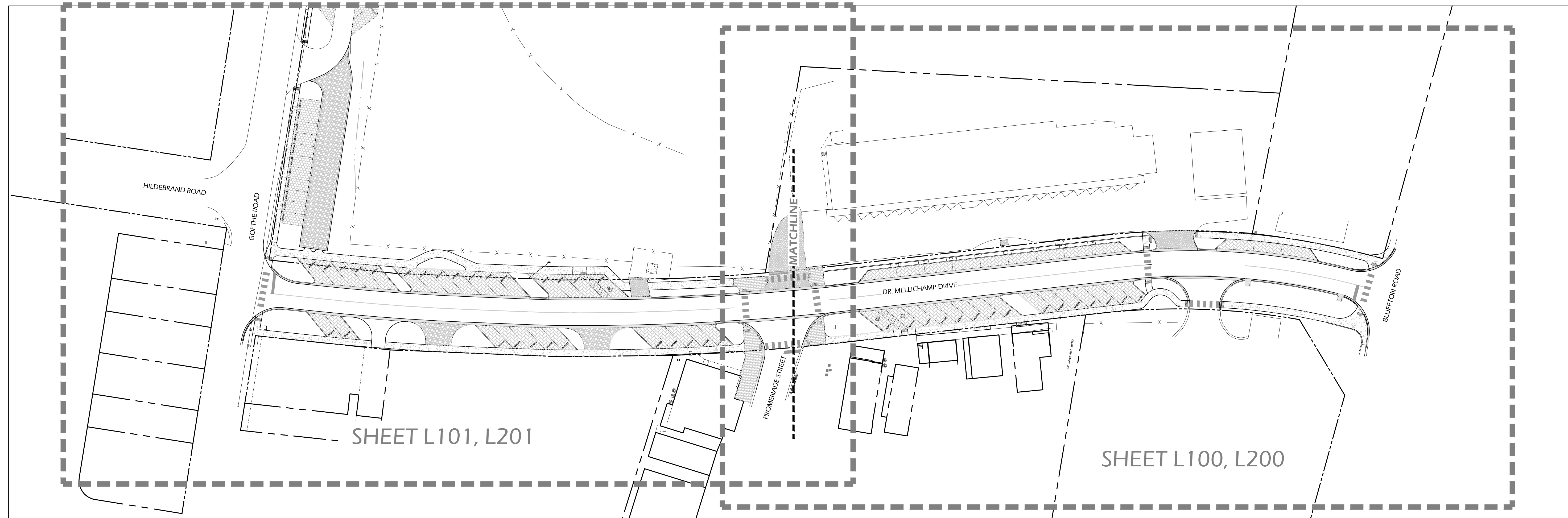


DR. MELLICHAMP DRIVE

STREETSCAPE IMPROVEMENTS



CONSULTANT INFO

TOPO AND BOUNDARY SURVEYS, EXISTING TREES AND SURVEY DATA WERE TAKEN FROM DIGITAL DATA PROVIDED BY:

SEA ISLAND LAND SURVEY, LLC
HILTON HEAD ISLAND, SOUTH CAROLINA
(843) 681.3248

ALL CIVIL ENGINEERING INFORMATION WAS TAKEN FROM DIGITAL DATA PROVIDED BY:

THOMAS AND HUTTON
SANAHHAH, GEORGIA
(912) 234.5300

16 JUNE 2017

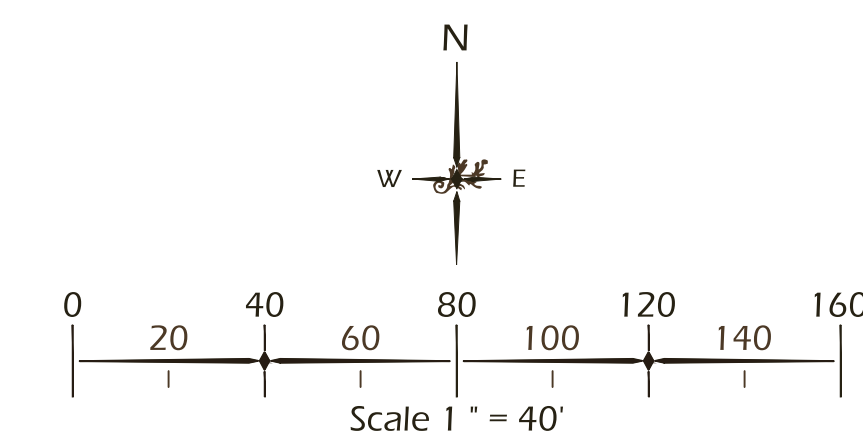
REVISION 19 JULY 2017

CONTACT

WITMER JONES KEEFER
23 PROMENADE ST., SUITE 201
BLUFFTON, SC. 29910
(843) 757.7411
WWW.WJKLTD.COM

SHEET INDEX

- CS - COVER SHEET, SHEET INDEX
- L20 - NOTES
- L100 - SIGNAGE, FURNISHINGS, AND LIGHTING PLAN 1
- L101 - SIGNAGE, FURNISHINGS, AND LIGHTING PLAN 2
- L200 - PLANTING PLAN 1
- L201 - PLANTING PLAN 2
- L210 - PLANTING SCHEDULE AND DETAILS
- L300 - DETAILS 1
- L301 - DETAILS 2
- I1 - IRRIGATION 1
- I2 - IRRIGATION 2
- I3 - IRRIGATION 3
- I4 - IRRIGATION 4



© 2017 WJK LTD.
DESIGN CONCEPTS, DRAWING SHEETS, LOGOS, SPECIFICATIONS, DETAILS, WRITTEN MATERIAL SHALL NOT BE USED OR REPRODUCED IN WHOLE OR IN PART IN ANY FORM WITHOUT PRIOR WRITTEN CONSENT OF WJK LTD.
THIS SHEET TO SCALE AT: 24"x36"

SITE DEVELOPMENT PLANS
FOR

DR. MELLICHAMP DRIVE

BLUFFTON, SOUTH CAROLINA

DATE: 16 JUNE 2017
PROJECT NO.: 1624.03
DRAWN BY: KJ
CHECKED BY: DK

**BID SET,
NOT FOR
CONSTRUCTION**

REVISIONS:
01 19 JULY 2017 SOD PARKING

DRAWING TITLE
COVER SHEET

DRAWING NUMBER

CS

SITE DEVELOPMENT PLANS
 FOR
DR. MELLICHAMP DRIVE
 BLUFFTON, SOUTH CAROLINA

DATE: 16 JUNE 2017
 PROJECT NO.: 1624.03
 DRAWN BY: KJ
 CHECKED BY: DK

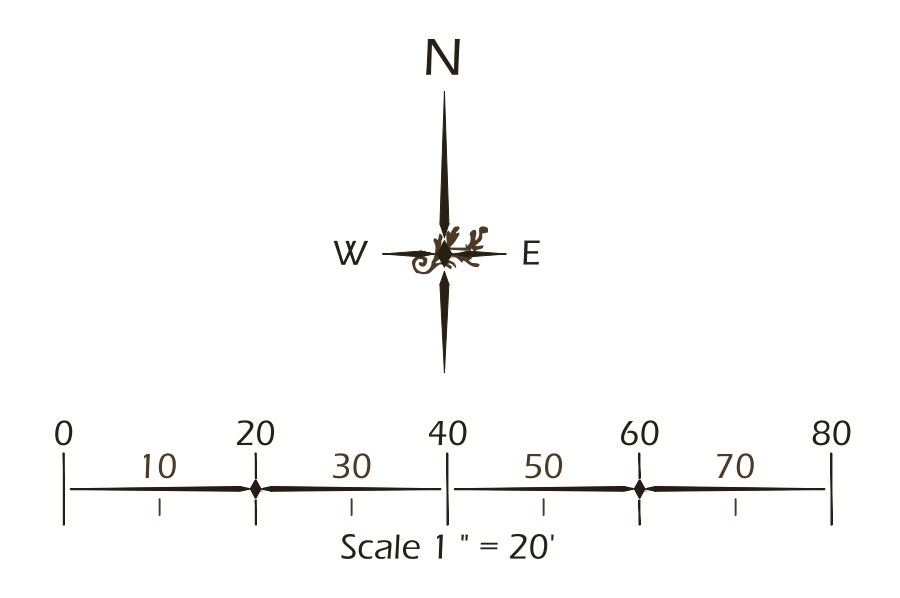
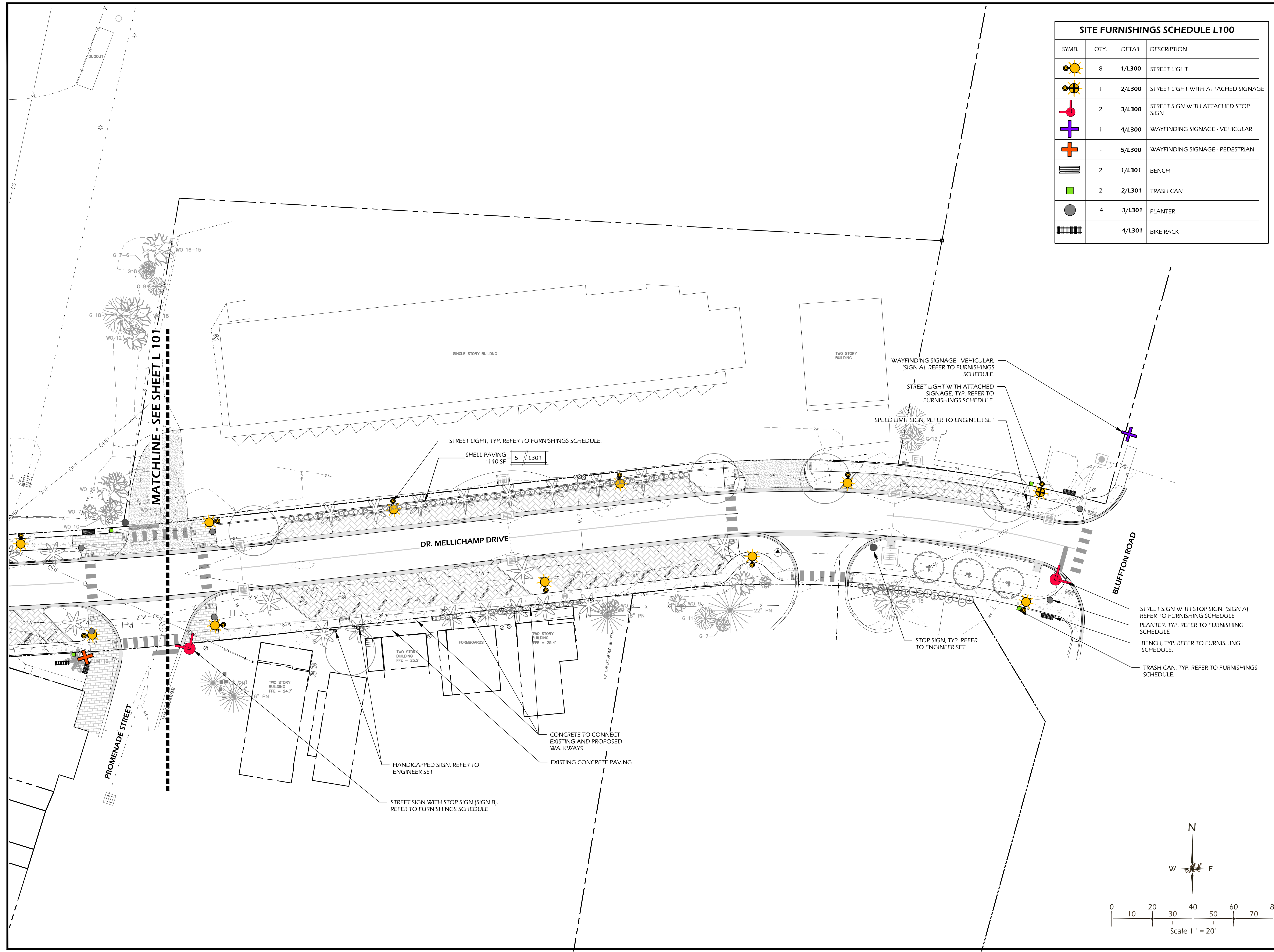
**BID SET,
 NOT FOR
 CONSTRUCTION**

REVISIONS:

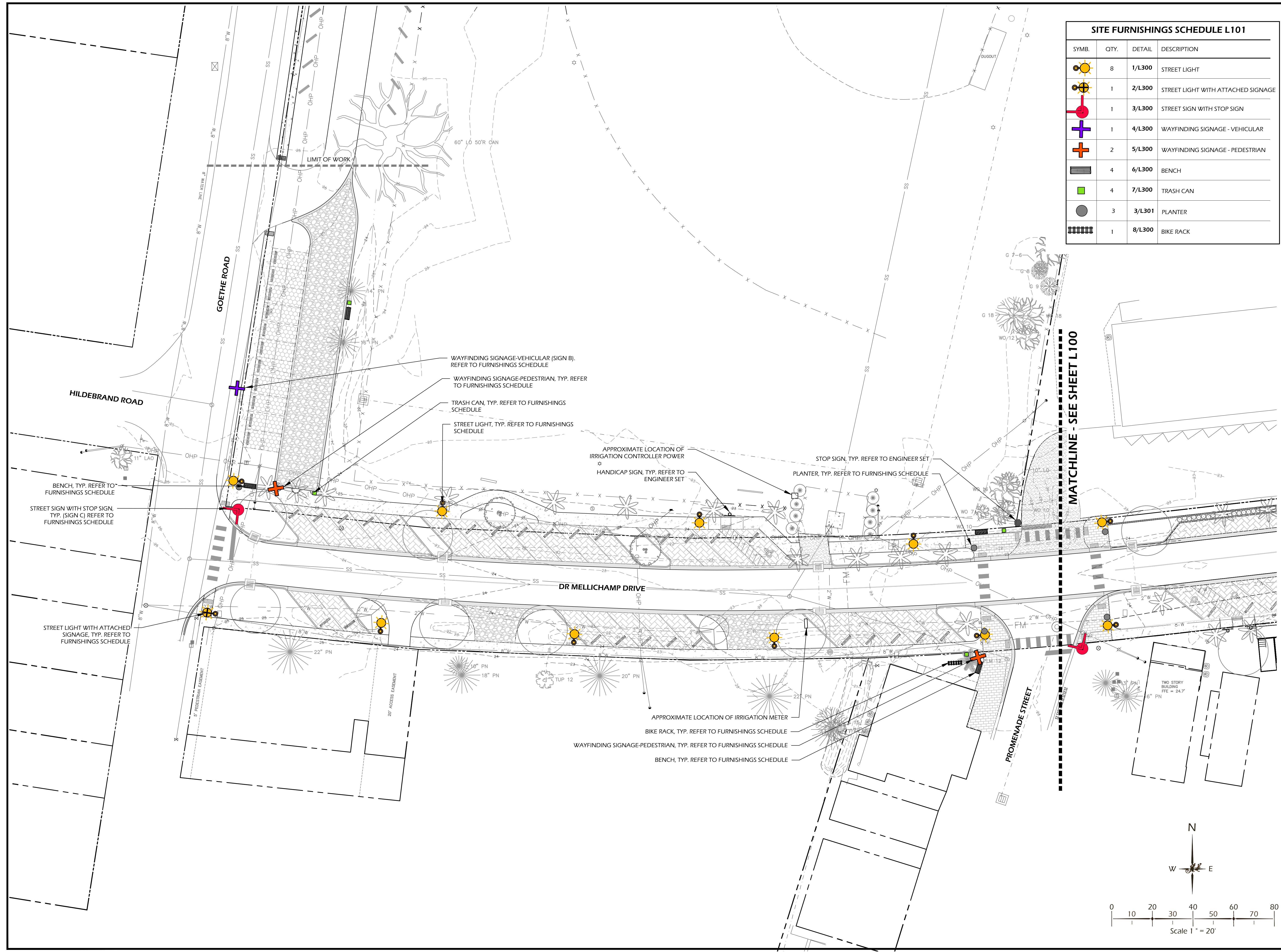
DRAWING TITLE
**SIGNAGE, FURNISHINGS, &
 LIGHTING PLAN 1**

DRAWING NUMBER
L100

SITE FURNISHINGS SCHEDULE L100			
SYMB.	QTY.	DETAIL	DESCRIPTION
	8	1/L300	STREET LIGHT
	1	2/L300	STREET LIGHT WITH ATTACHED SIGNAGE
	2	3/L300	STREET SIGN WITH ATTACHED STOP SIGN
	1	4/L300	WAYFINDING SIGNAGE - VEHICULAR
	-	5/L300	WAYFINDING SIGNAGE - PEDESTRIAN
	2	1/L301	BENCH
	2	2/L301	TRASH CAN
	4	3/L301	PLANTER
	-	4/L301	BIKE RACK



SITE FURNISHINGS SCHEDULE L101			
SYMB.	QTY.	DETAIL	DESCRIPTION
	8	1/L300	STREET LIGHT
	1	2/L300	STREET LIGHT WITH ATTACHED SIGNAGE
	1	3/L300	STREET SIGN WITH STOP SIGN
	1	4/L300	WAYFINDING SIGNAGE - VEHICULAR
	2	5/L300	WAYFINDING SIGNAGE - PEDESTRIAN
	4	6/L300	BENCH
	4	7/L300	TRASH CAN
	3	3/L301	PLANTER
	1	8/L300	BIKE RACK



SITE DEVELOPMENT PLANS
 FOR
DR. MELLICHAMP DRIVE
 BLUFFTON, SOUTH CAROLINA

DATE: 16 JUNE 2017
 PROJECT NO.: 1624.03
 DRAWN BY: KJ
 CHECKED BY: DK

**BID SET,
 NOT FOR
 CONSTRUCTION**

REVISIONS:

DRAWING TITLE
**SIGNAGE, FURNISHINGS, &
 LIGHTING PLAN 2**

DRAWING NUMBER
L101

© 2017 WJK LTD.
 DESIGN CONCEPTS, DRAWING, SHEETS,
 LOGOS, SPECIFICATIONS, DETAILS, WRITTEN
 MATERIAL SHALL NOT BE USED OR
 REPRODUCED IN WHOLE OR IN PART IN
 ANY FORM WITHOUT PRIOR WRITTEN
 CONSENT OF WJK LTD.
 THIS SHEET TO SCALE AT: 24"X36"

SITE DEVELOPMENT PLANS
 FOR
DR. MELLICHAMP DRIVE
 BLUFFTON, SOUTH CAROLINA

DATE: 16 JUNE 2017
 PROJECT NO.: 1624.03
 DRAWN BY: KJ
 CHECKED BY: DK

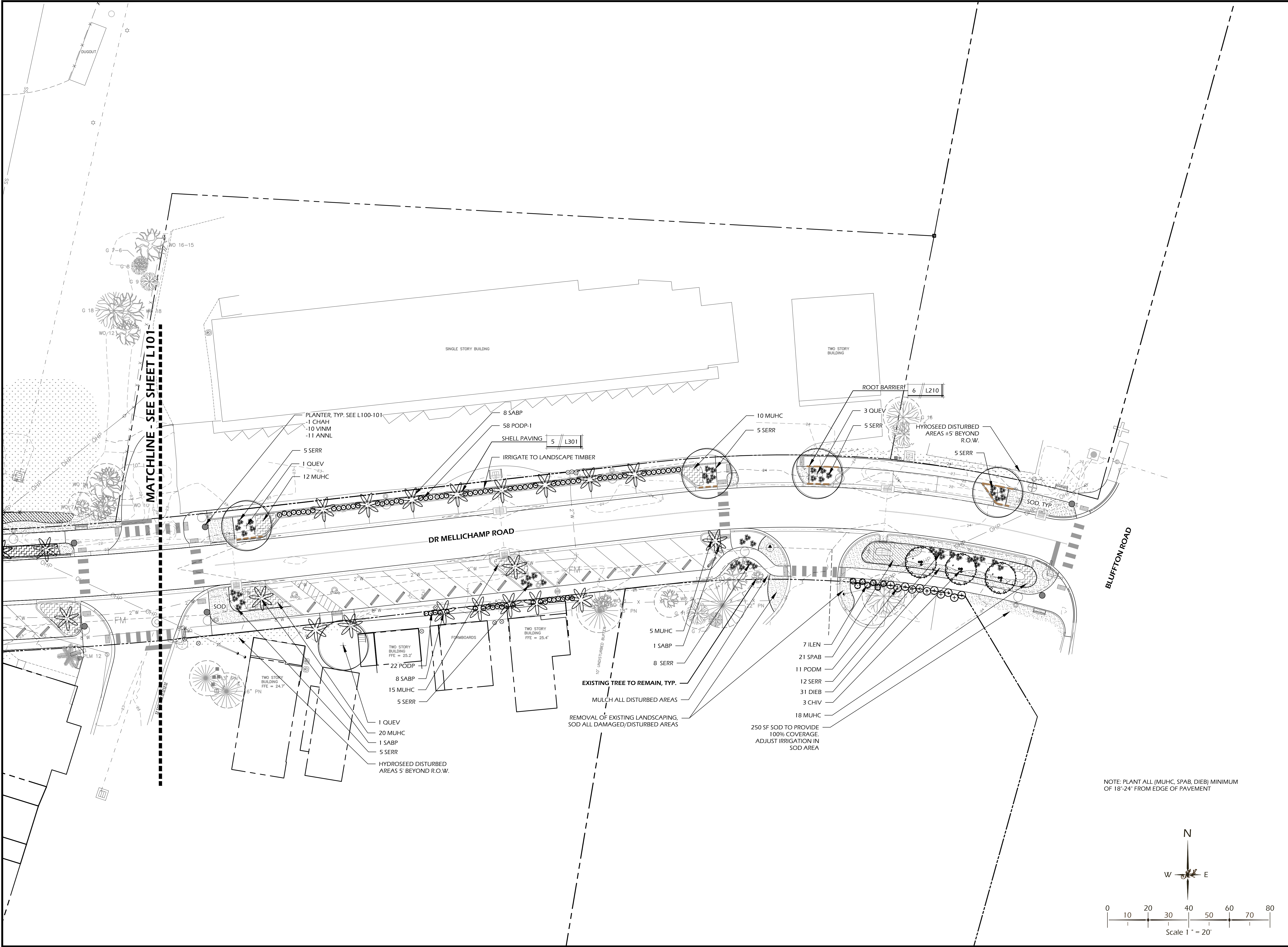
**BID SET,
 NOT FOR
 CONSTRUCTION**

REVISIONS:

DRAWING TITLE
PLANTING PLAN 1

DRAWING NUMBER

L200



MATCHLINE - SEE SHEET L101

PLANTER, TYP. SEE L100-101
 -1 CHAH
 -10 VINM
 -11 ANNIL

8 SABP
 58 PODP-1
 SHELL PAVING 5 L301
 IRRIGATE TO LANDSCAPE TIMBER

5 SERR
 1 QUEV
 12 MUHC

10 MUHC
 5 SERR

ROOT BARRIER 6 L210

3 QUEV
 5 SERR

HYROSEED DISTURBED
 AREAS ±5' BEYOND
 R.O.W.

5 SERR

DR MELLICHAMP ROAD

BLUFFTON ROAD

TWO STORY BUILDING
 FFE = 23.2'
 22 PODP
 8 SABP
 15 MUHC
 5 SERR

TWO STORY BUILDING
 FFE = 24.7'
 6" PN

1 QUEV
 20 MUHC
 1 SABP
 5 SERR

HYROSEED DISTURBED
 AREAS 5' BEYOND R.O.W.

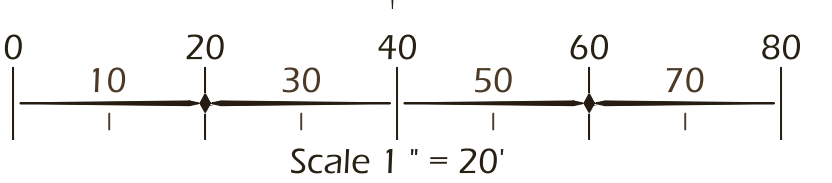
EXISTING TREE TO REMAIN, TYP.
 MULCH ALL DISTURBED AREAS
 REMOVAL OF EXISTING LANDSCAPING,
 SOD ALL DAMAGED/DISTURBED AREAS

5 MUHC
 1 SABP
 8 SERR

250 SF SOD TO PROVIDE
 100% COVERAGE
 ADJUST IRRIGATION IN
 SOD AREA

7 ILEN
 21 SPAB
 11 PODM
 12 SERR
 31 DIEB
 3 CHIV
 18 MUHC

NOTE: PLANT ALL (MUHC, SPAB, DIEB) MINIMUM
 OF 18"-24" FROM EDGE OF PAVEMENT



© 2017 WJK LTD.
 DESIGN CONCEPTS, DRAWING, SHEETS,
 LOGOS, SPECIFICATIONS, DETAILS, WRITTEN
 MATERIAL SHALL NOT BE USED OR
 REPRODUCED IN WHOLE OR IN PART IN
 ANY FORM WITHOUT PRIOR WRITTEN
 CONSENT OF WJK LTD.
 THIS SHEET TO SCALE AT: 2 1/4" X 36"

SITE DEVELOPMENT PLANS
 FOR
DR. MELLICHAMP DRIVE
 BLUFFTON, SOUTH CAROLINA

DATE: 16 JUNE 2017
 PROJECT NO.: 1624.03
 DRAWN BY: KJ
 CHECKED BY: DK

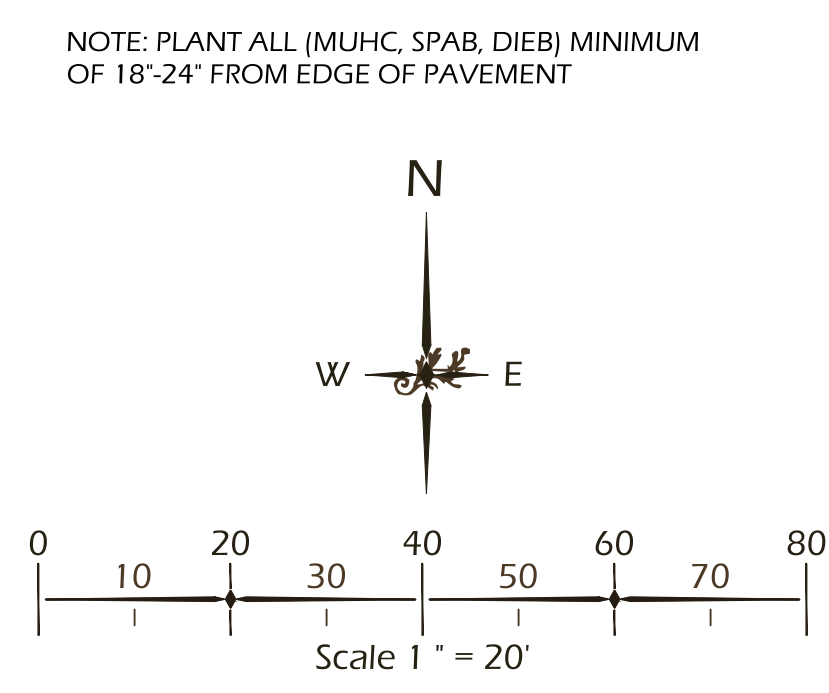
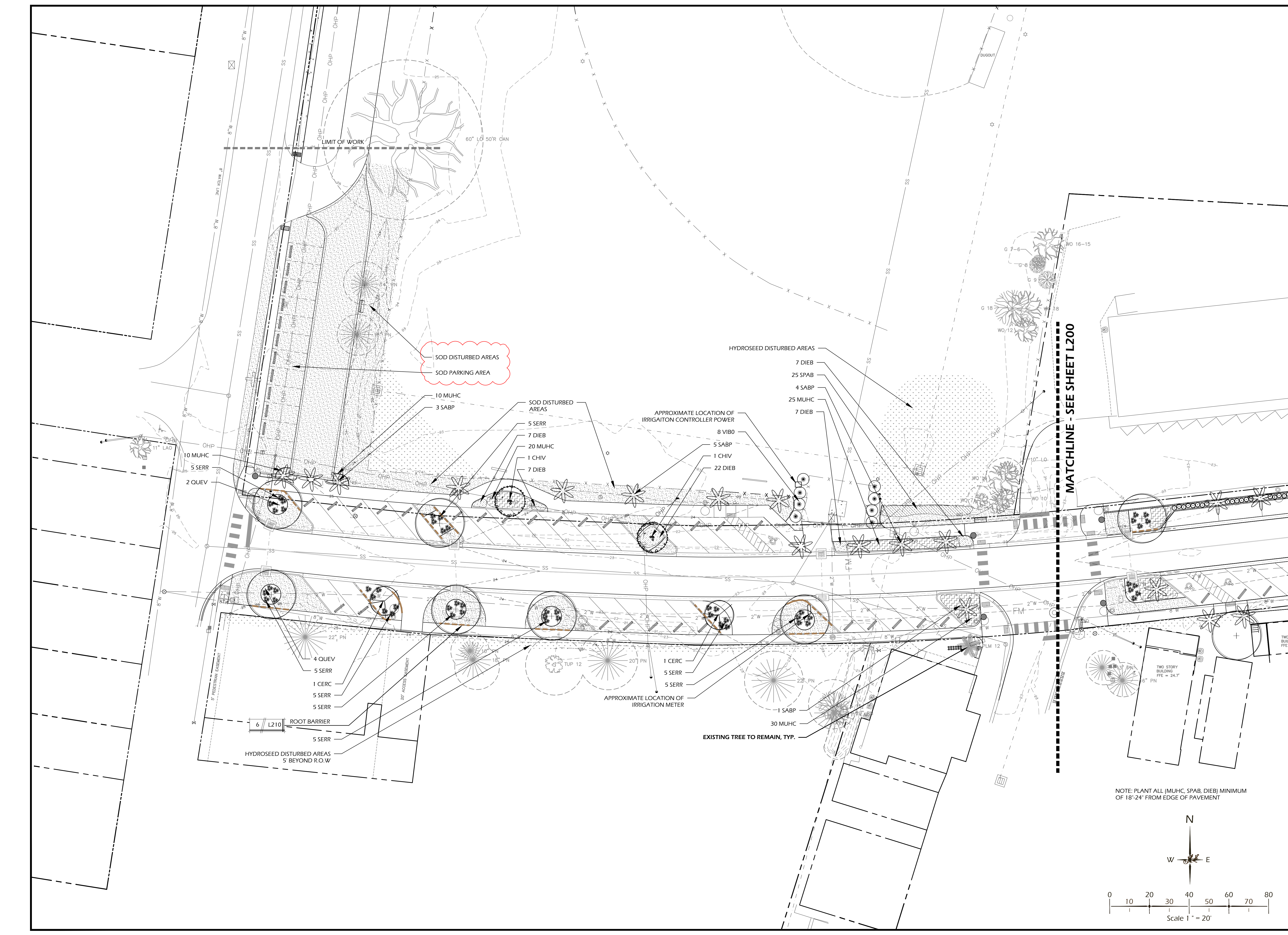
BID SET,
 NOT FOR
 CONSTRUCTION

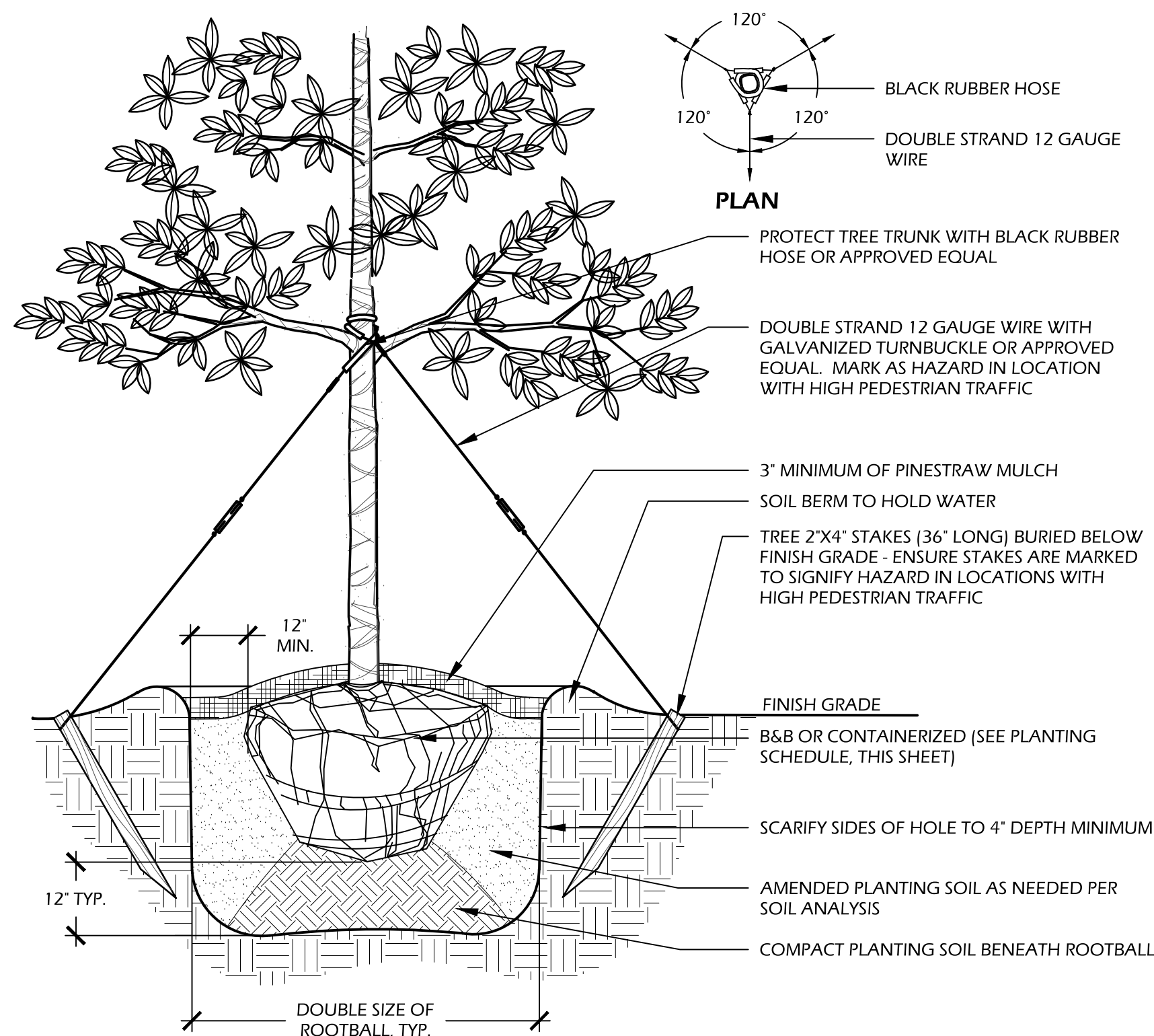
REVISIONS:
 01 19 JULY 2017 SOD PARKING

DRAWING TITLE
PLANTING PLAN 2

DRAWING NUMBER

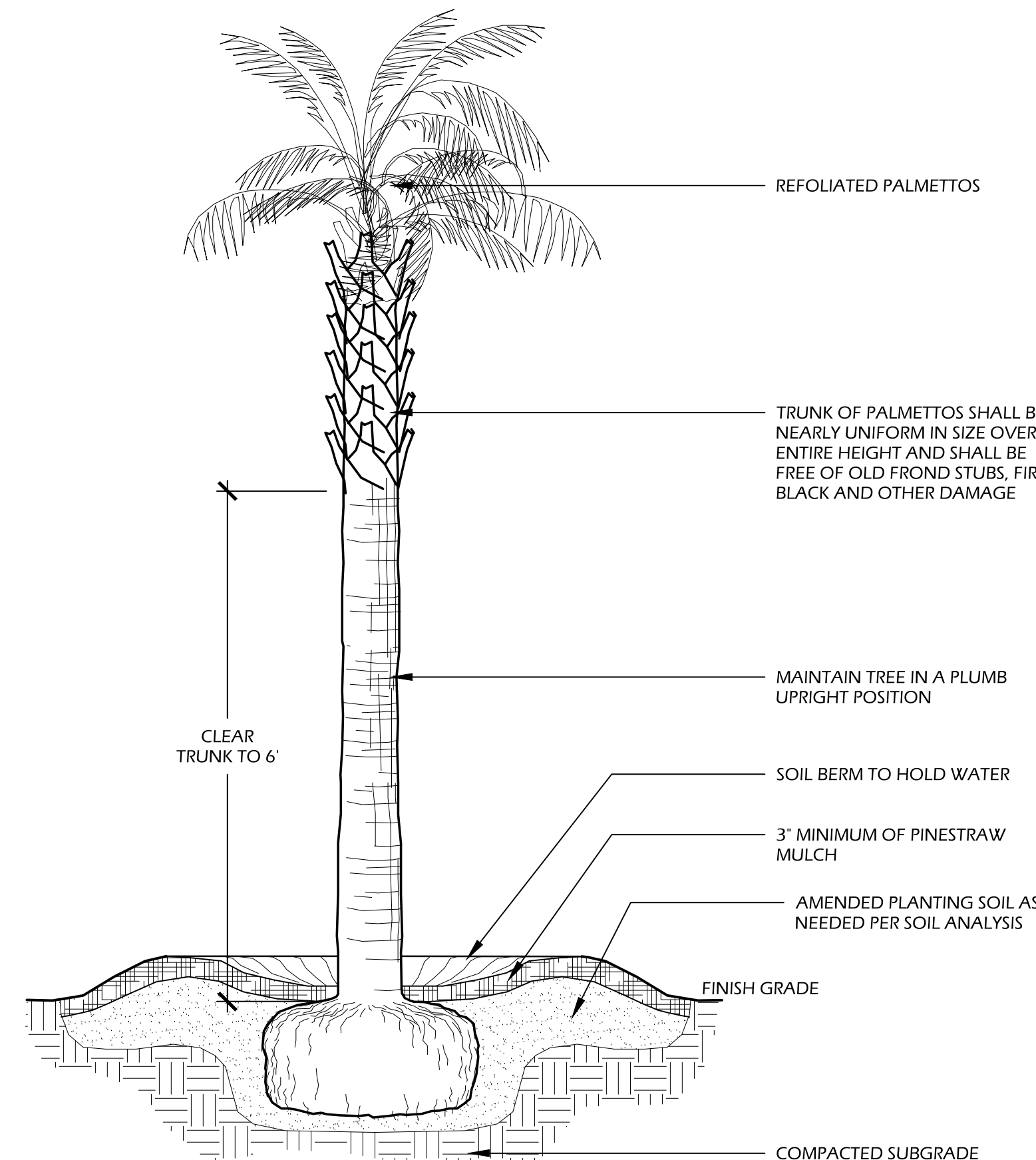
L201





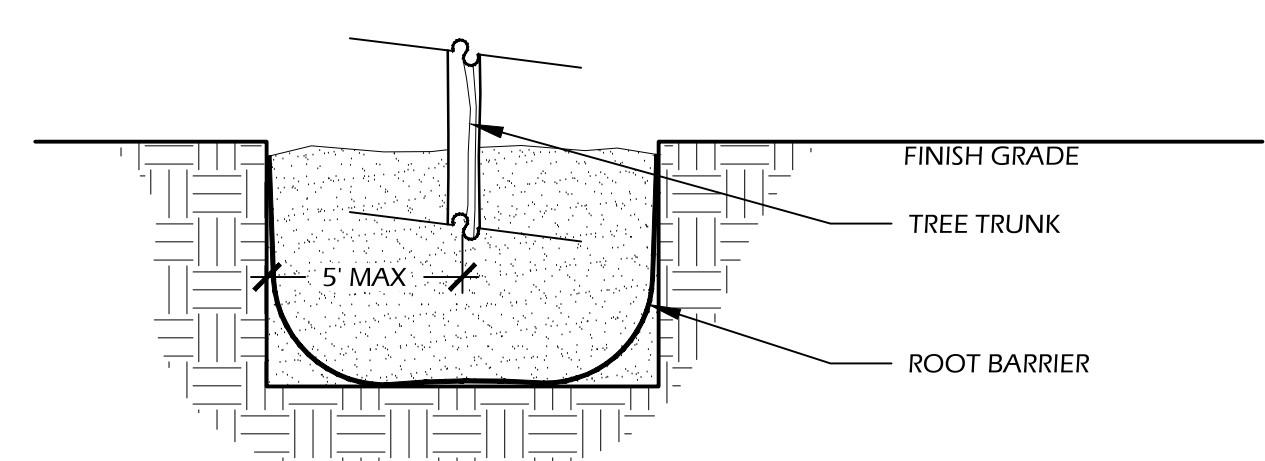
- NOTES:**
- TREE STAKING OPTIONAL, HOWEVER, LANDSCAPE CONTRACTOR RESPONSIBLE FOR MAINTAINING TREES IN AN UPRIGHT (90 DEGREE/ PERPENDICULAR) POSITION FOR 1 YEAR AFTER PLANTING IS COMPLETE OR UNTIL TREE ROOT SYSTEM IS FULLY ESTABLISHED AND STURDY. FINAL TREE STAKING DETAILS AND PLACEMENT TO BE APPROVED BY OWNER'S REPRESENTATIVE.
 - CONTRACTOR SHALL ASSURE PERCOLATION OF ALL PLANTING PITS PRIOR TO INSTALLATION.
 - IN SEMI-IMPERVIOUS SOIL CONDITIONS, ROOTBALL ELEVATION SHALL BE 2" ABOVE FINISH GRADE. COORDINATE WITH OWNER'S REPRESENTATIVE PRIOR TO SETTING ROOTBALL ELEVATIONS.

1 // L210 TREE PLANTING
SCALE: N.T.S.



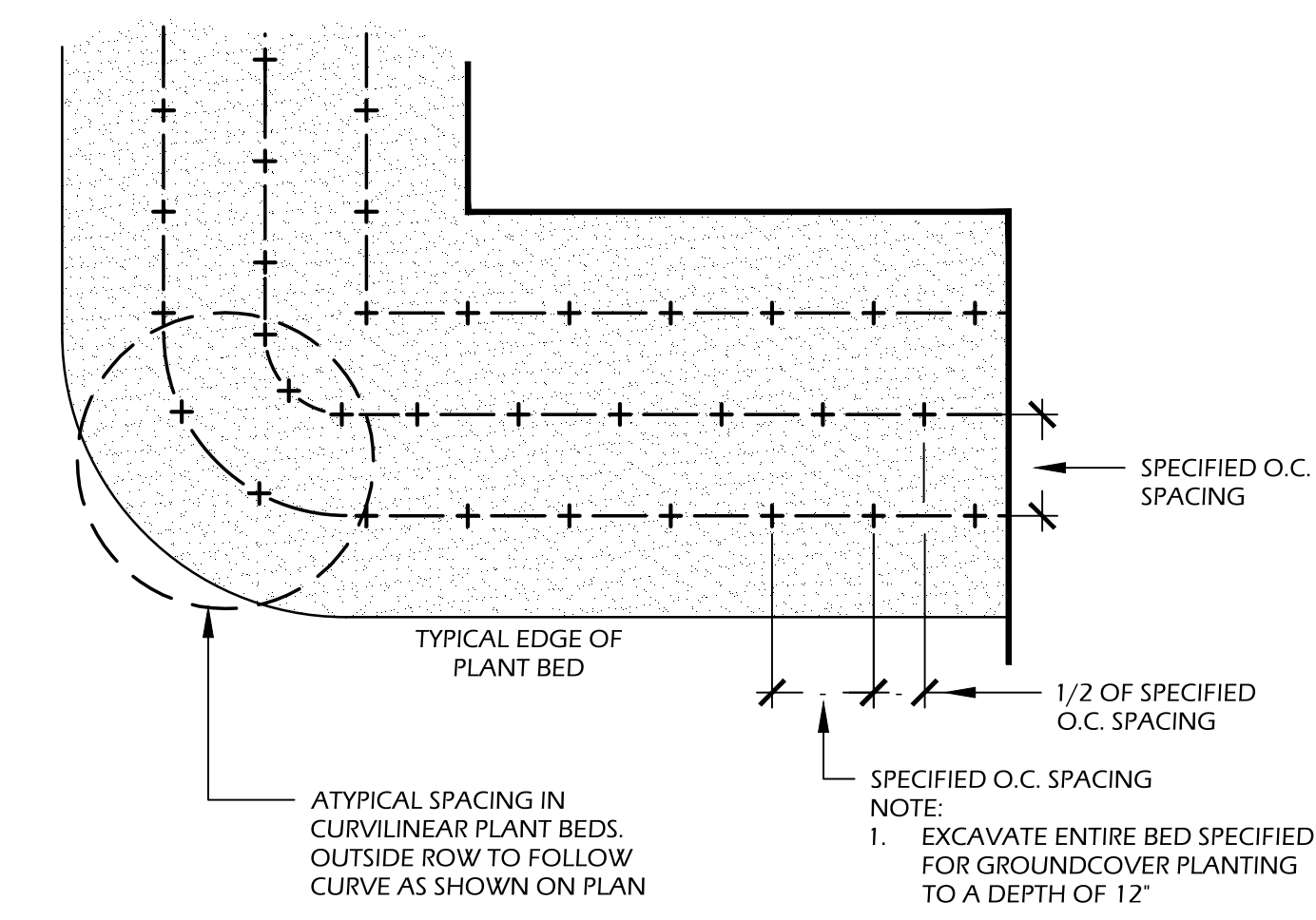
- NOTES:**
- FINAL TREE STAKING DETAILS AND PLACEMENT TO BE APPROVED BY OWNER OR OWNER'S REPRESENTATIVE.
 - CONTRACTOR SHALL ASSURE PERCOLATION OF ALL PLANTING PITS PRIOR TO INSTALLATION.
 - SABAL PALMETTOS SHALL BE REFOLIATED.

2 // L210 REFOLIATED PALM TREE PLANTING
SCALE: N.T.S.

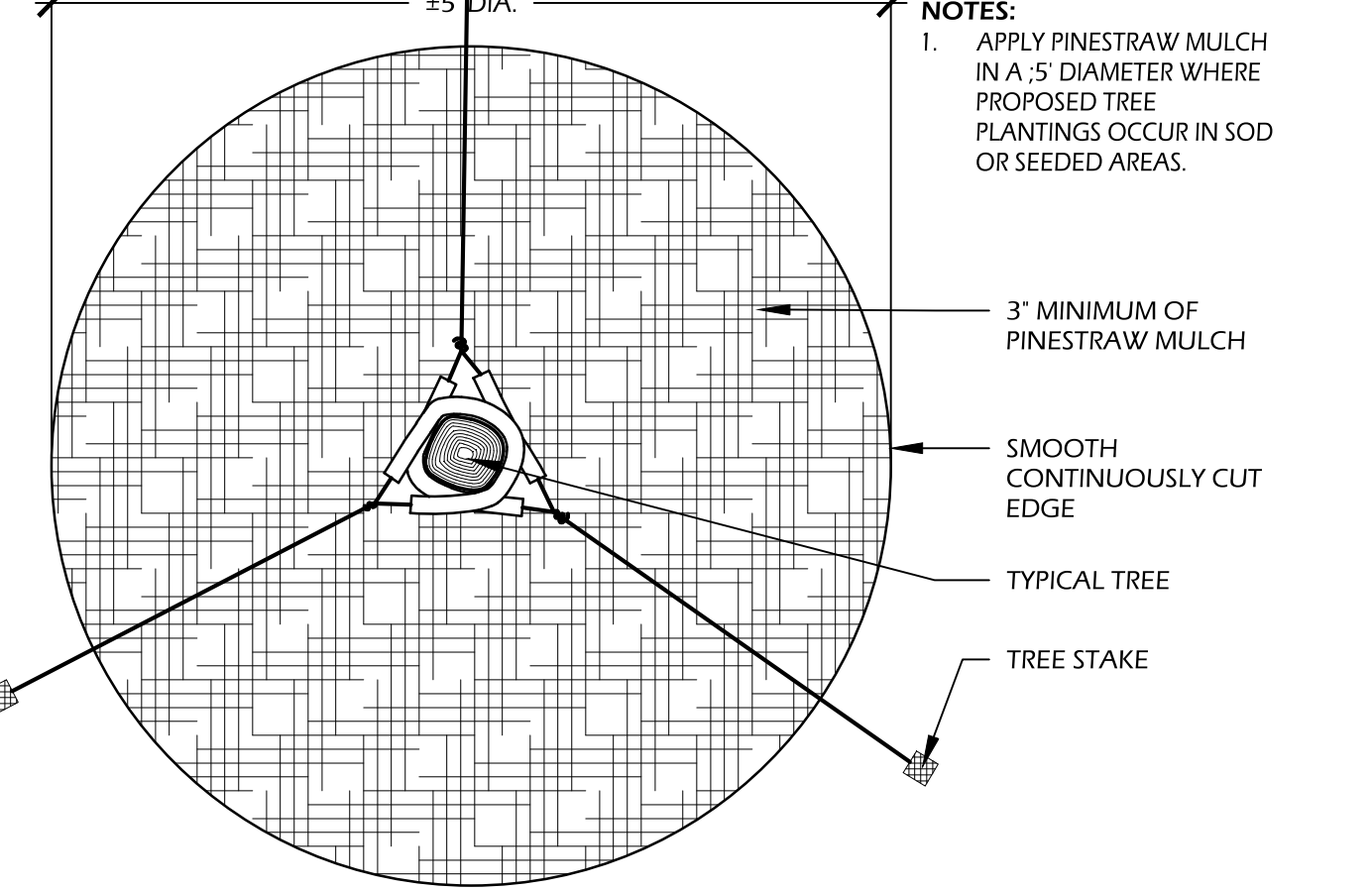


- NOTES:**
- ROOT BARRIERS SHALL BE INSTALLED ADJACENT TO HARDSCAPE WHERE CANOPY TREES ARE PLANTED WITH 5'

3 // L210 SHRUB PLANTING
SCALE: N.T.S.



- NOTES:**
- APPLY PINESTRAW MULCH IN A 5' DIAMETER WHERE PROPOSED TREE PLANTINGS OCCUR IN SOD OR SEEDED AREAS.



5 // L210 TREE STAKING
SCALE: N.T.S.

PLANT SCHEDULE:

Quantity	Abbrev	Botanical Name	Common Name	Height	Spread	Container	Cal/Spacing	Notes
LANDSCAPE								
TREES								
11	QUEV	Quercus virginiana 'Highrise'	Highrise Live Oak	16'	10'-12'	container	4" cal.	Full, container grown
31	SABP	Sabal Palmetto	Sabal Palm	12-13'	-	-	-	Clear Trunk to 8', Refoliated
UNDERSTORY TREES								
2	CERC	Cercis canadensis 'Oklahoma'	Oklahoma Eastern Redbud	8'-10'	6'-8'	-	2.5" cal.	Full
5	CHIV	Chionanthus virginicus	Fringetree	7'-8'	4'-5'	container	-	Multi-stem
SHRUBS								
7	ILEN	Ilex vomitoria 'Nana'	Dwarf Yaupon Holly	12"-18"	12"-18"	7 gal.	-	Full
11	PODM	Podocarpus macrophyllus	Podocarpus	36"-48"	18"-24"	7 gal.	-	Full
22	PODP	Podocarpus macrophylla 'Pringle'	Dwarf Podocarpus	18-24"	18"	7 gal.	-	
58	PODP-1	Podocarpus macrophylla 'Pringle'	Dwarf Podocarpus	24"-30"	18"	15 gal.	-	
90	SERR	Serenoa repens	Saw Palmetto	30"	18-24"	7 gal.	-	Full
8	VIBO	Viburnum odoratissimum	Sweet Viburnum	4-5'	2-3'	15 gal.	-	Full
ORNAMENTAL GRASSES & FERNS								
170	MUHC	Muhlenbergia capillaris	Pink Muhly Grass	12"-18"	8"-12"	1 gal.	24" O.C.	Full; Plant 18"-24" from edge of pavement
46	SPAB	Spartina bakeri	Cord Grass	12"-18"	12"-18"	1 gal.	36" O.C.	Full; Plant 18"-24" from edge of pavement
GROUNDCOVERS, VINES & PERENNIALS								
81	DIEB	Diets bicolor	White African Iris	12-18"	8-12"	container	24" O.C.	-
SOD & MULCH								
15,250	LAWN-SF		Empire Zoysia Sod					
7,700	LAWN-SF		Seed					
5,900	MULCH-SF	Mulch	Hardwood Mulch (brown shredded)					
URN PLANTINGS								
7	CHAH	Chamaerops humilis	European Fan Palm	-	-	3 gal.	-	
70	VINM	Vinca major 'variegata'	Variiegated Vinca	-	-	1 gal.	-	
77	ANNL		Seasonal Color/Annuals	-	-	2.25pp	-	

UB 24-2 Specifications
24" DeepRoot® Tree Root Barrier

SPECIFIED TREE ROOT BARRIER IS A MECHANICAL BARRIER AND ROOT DEFLECTOR USED TO PREVENT TREE ROOTS FROM DAMAGING HARDSCAPES AND LANDSCAPES ASSEMBLED IN 24" (609 MM) LONG MODULES TO CREATE VARYING LENGTHS FOR LINEAR APPLICATIONS OR PERIMETER SURROUND APPLICATIONS IN VARYING SIZES.

A. MATERIALS
1. THE CONTRACTOR SHALL FURNISH AND INSTALL TREE ROOT BARRIER AS SPECIFIED. THE TREE ROOT BARRIER SHALL BE EITHER PRODUCT #UB 24-2 AS MANUFACTURED BY DEEPROOT® GREEN INFRASTRUCTURE, LLC, 530 WASHINGTON STREET, SAN FRANCISCO, CA. WWW.DEEPROOT.COM (800.458.7668).

2. ROOT BARRIER SHALL BE RECYCLABLE, BLACK, INJECTION MOLDED PANELS WITH 0.087" (2.23 MM) WALL THICKNESS IN MODULES 24" (609 MM) LONG AND 24" (609 MM) DEEP.

3. ROOT BARRIER SHALL BE MANUFACTURED WITH 75% REPROCESSED POLYPROPYLENE WITH ADDED ULTRAVIOLET INHIBITORS.

4. ROOT BARRIER SHALL BE COMPRISED OF 24" (609 MM) PANELS. EACH PANEL SHALL HAVE NO LESS THAN FOUR (4) MOLDED INTEGRAL VERTICAL ROOT DIRECTING RIBS OF A MINIMUM 0.075" (1.90 MM) THICKNESS, PROTRUDING 1/2" (12.7 MM) AT 90° FROM INTERIOR OF THE BARRIER PANEL, SPACED 6" (152.4 MM) APART. (SEE DETAILS A & D).

5. ROOT BARRIER SHALL HAVE A DOUBLE TOP EDGE CONSISTING OF TWO PARALLEL, INTEGRAL, HORIZONTAL RIBS AT THE TOP OF THE PANEL AT 0.060" (1.52 MM) THICKNESS, 3/8" (9.53 MM) WIDE AND 1/4" (6.35 MM) APART WITH THE LOWER RIB ATTACHED TO THE VERTICAL ROOT DIRECTING RIBS (SEE DETAIL A).

6. ROOT BARRIER SHALL HAVE A MINIMUM OF TWELVE (12) ANTI-LIFT GROUND LOCK TABS CONSISTING OF INTEGRAL HORIZONTAL RIDGES OF MINIMUM 0.075" (1.90 MM) THICKNESS IN THE SHAPE OF A SEGMENT OF AN OBLONG, THE 2" (50.8 MM) CHORD OF THE SEGMENT JOINING THE PANEL WALL AND THE SEGMENT, PROTRUDING 3/8" (9.53 MM) FROM THE PANEL. THE TWELVE GROUND LOCKS ON EACH PANEL SHALL BE ABOUT EQUALLY SPACED BETWEEN EACH OF THE VERTICAL ROOT DIRECTING RIBS (FOUR (4) BETWEEN EACH SET OF RIBS, SEE DETAILS B & D).

7. ROOT BARRIER SHALL HAVE AN INTEGRATED ZIPPER JOINING SYSTEM FOR ASSEMBLY BY SLIDING ONE PANEL INTO ANOTHER (SEE DETAIL C).

U.S. PATENTS: 5,305,549 AND 5,528,857. OTHER PATENTS PENDING.

DETAIL A - DOUBLE TOP EDGE AND VERTICAL ROOT DIRECTING RIB

DETAIL B - ANTI-LIFT GROUND LOCK TAB

DETAIL C - ZIPPER JOINING SYSTEM

DETAIL D - TREE ROOT BARRIER PANEL

Surround Style Planting with DeepRoot Universal Barriers

When selecting the Surround style planting application you will have the greatest success by following these simple steps as illustrated below.

A. Prepare the initial planting hole as illustrated below. This is based upon the combination of desired barrier diameter and depth. Consider if drainage devices or amendments are needed to correct any adverse soil or planting conditions in the backfill area.

B. Assemble the appropriate number of DeepRoot Universal Barrier panels. The vertical root deflecting ribs on the panel must face inward, toward the root ball. (This is very important, otherwise the roots will become girdled by traveling around the smooth walled surface)

C. Next place the barrier in the center of the planting hole, keeping in mind that the double top edge of the barrier should be positioned approximately 1/2" (13mm) above grade. This helps retard potential root overgrowth. Failing to position the top edge above grade can allow root overgrowth which can lead to uprooted hardwoods.

D. Backfill and compact with soil inside the barrier to the level where the bottom of the root ball will be when positioned correctly with the crown of the root ball approximately 1" (25mm) above grade.

E. Remove the tree from its container, or cut away the top portion of burlap and position in the center of the barrier. Complete the backfill of the soil. Distribute evenly to maintain the slope of the barrier and compact the backfill every 4"-6" (10cm-15cm). Roots will die quickly if left exposed to the elements so keep exposure of the roots to a minimum.

F. If staking or guying is required we recommend using the soft, safe and economical alternative to traditional wire and hose, ArborTie (see www.deeproot.com for details)

G. If the tree(s) will be subject to maintenance work such as lawn mowing or weed trimming we strongly recommend the installation of ArborGuard® Tree Trunk Protectors which are placed around the base of young trees to protect them from damage by weed trimmers, lawn mowers and small rodents. (see www.deeproot.com)

H. Water and follow proper tree maintenance practices.

Trees do require care and nurturing after planting. Consult with your local supplier for proper care procedures for the species you are planting. The planting instructions given here are by no means a comprehensive guide. Rather they are general guidelines to planting with DeepRoot Barriers and a survey of current planting methods. Conditions will vary however and it is recommended that an Arborist be consulted before planting.

For additional information please visit our website at www.deeproot.com

For information regarding distributors please call: 1 800 458 7668. For help with drainage or other difficult installation questions please call DeepRoot Technical Support at: 1 800 ROOT TEK (766.8835).

A Typical Surround Planting Installation Using DeepRoot Universal Barrier

Properties

Properties	Typical Value	ASTM Test Method
Tensile strength @ yield - Wall	2,354 PSI	D638
Tensile strength @ yield - Hinge	2,846 PSI	D638
Yield Elongation - Wall	7.44%	D638
Yield Elongation - Hinge	7.01%	D638
Flexural Modulus	119,625 PSI	D790B
Notched Izod Impact - Wall	3.84 (ft-lb)	D256A
Rockwell Hardness r. scale - Wall	84.4	D785A

39" Minimum (99cm) Minimum 3 Times Root Ball Diameter (Where Possible)

6 // L210 ROOT BARRIER
SCALE: N.T.S.



© 2017 WJK LTD.
DESIGN CONCEPTS, DRAWING SHEETS, LOGOS, SPECIFICATIONS, DETAILS, WRITTEN MATERIAL SHALL NOT BE USED OR REPRODUCED IN WHOLE OR IN PART IN ANY FORM WITHOUT PRIOR WRITTEN CONSENT OF WJK LTD.
THIS SHEET TO SCALE AT: 24"X36"

SITE DEVELOPMENT PLANS FOR
DR. MELLICHAMP DRIVE
BLUFFTON, SOUTH CAROLINA

DATE: 16 JUNE 2017
PROJECT NO.: 1624.03
DRAWN BY: KJ
CHECKED BY: DK

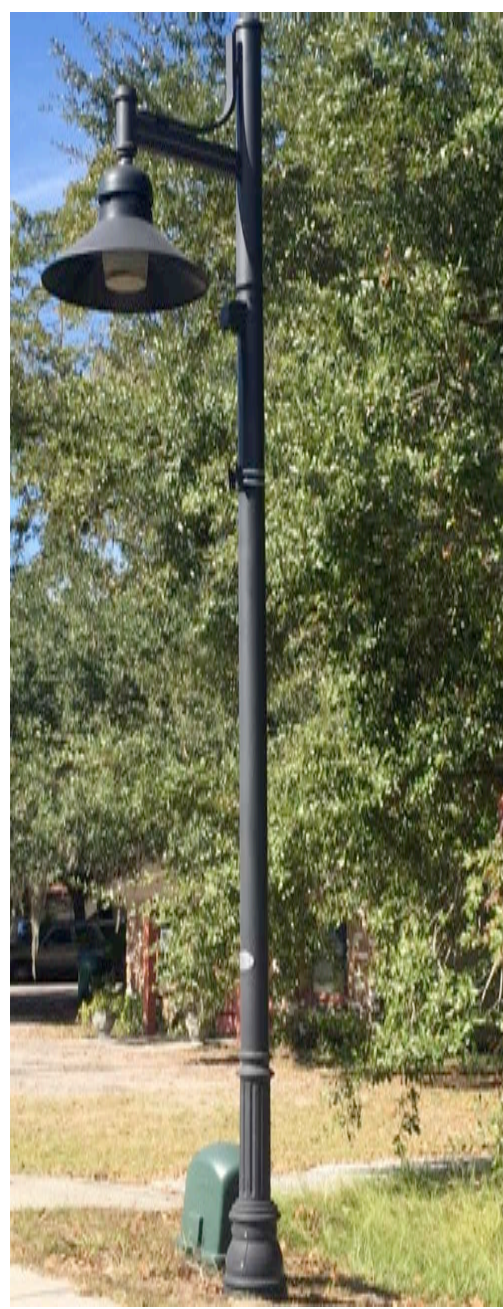
BID SET, NOT FOR CONSTRUCTION

REVISIONS:
01 19 JULY 2017 SOD PARKING

DRAWING TITLE
PLANTING SCHEDULE AND DETAILS

DRAWING NUMBER

L210



NOTE:
 - STREET LIGHT POST TO BE 18" FROM SIDEWALK
 - STREET LIGHT TO MATCH BLUFFTON 'SHEPARD'S HOOK' EXISTING LIGHT POSTS

STREET LIGHT - N.I.C.
 (PRODUCED BY SCEG)

1 // L300 STREET LIGHT
 NOTE TO SCALE



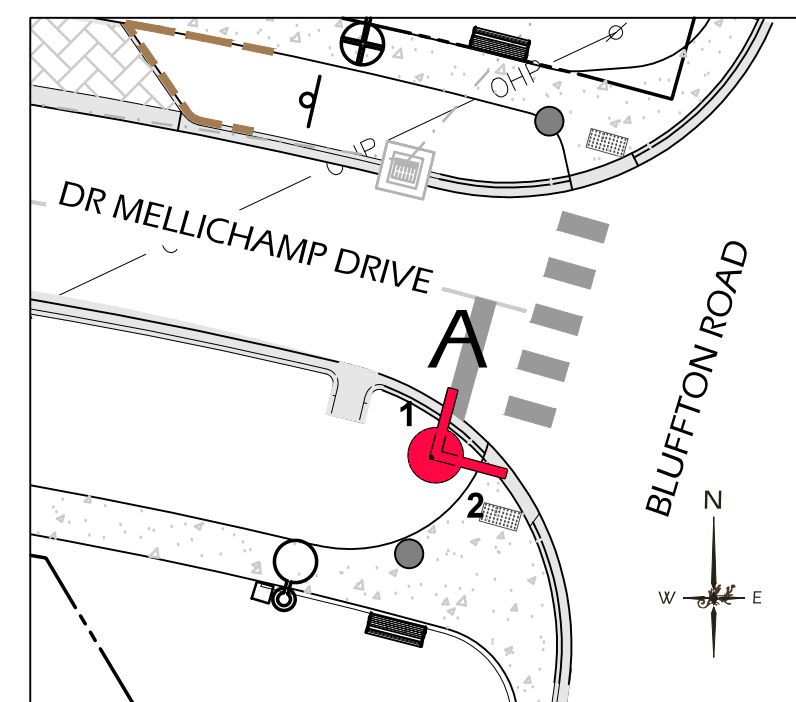
NOTE:
 - TO MATCH BLUFFTON EXISTING BLUFFTON STREET LIGHT AND PARKING SIGNS
 - STREET SIGNS AND TEXT TO BE APPROVED BY OWNER OR OWNERS REPRESENTATIVE PRIOR TO ORDERING AND INSTALLATION.

****ONLY ATTACHED PARKING SIGN FOR BID**

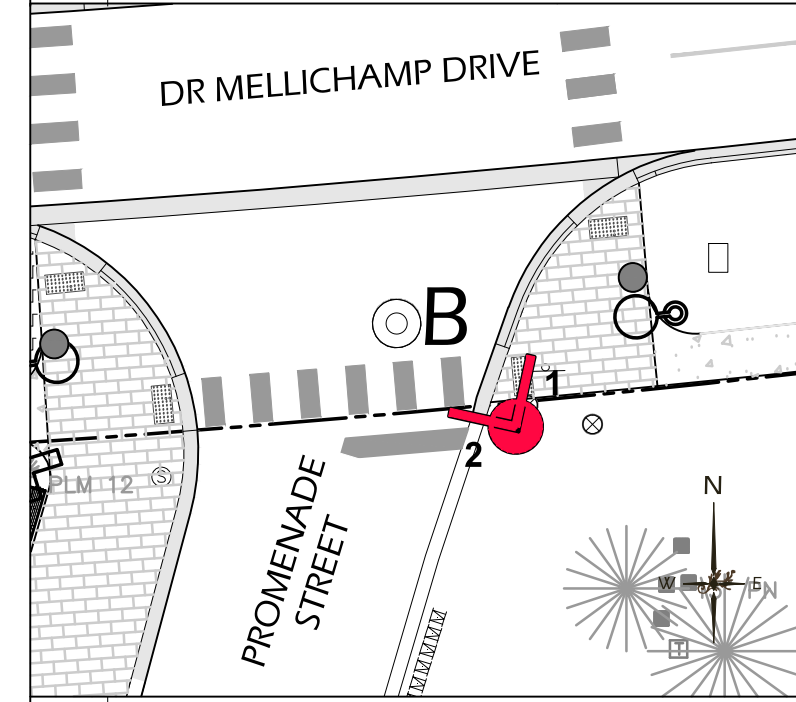
STREET LIGHT = N.I.C.
 (PRODUCED BY SCEG)

2 // L300 STREET LIGHT WITH ATTACHED SIGNAGE
 SCALE: NOT TO SCALE

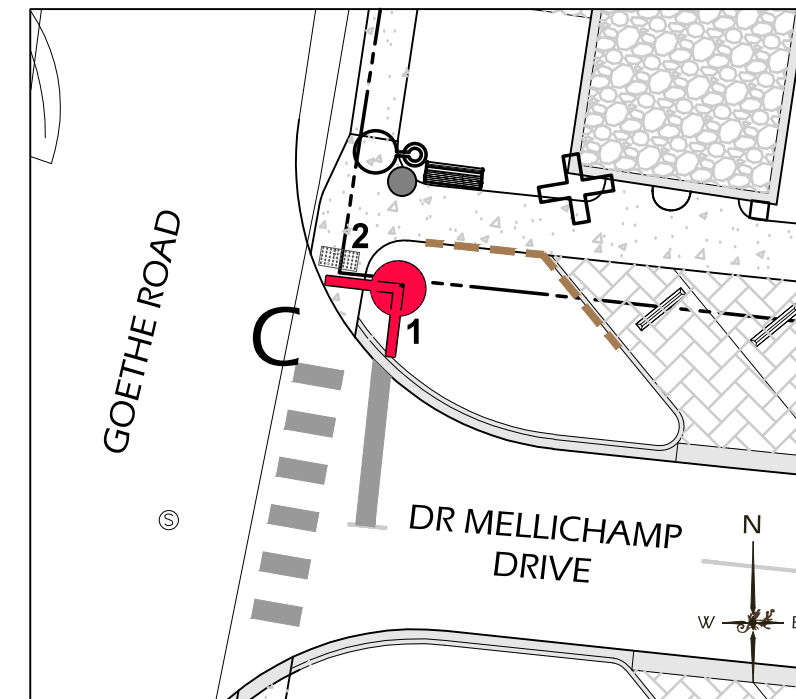
STREET SIGNAGE SCHEDULE			
LETTER	SYMBOL	DESCRIPTION	LOCATION
A		1 BLUFFTON ROAD	BLUFFTON ROAD & DR MELLICHAMP ROAD
		2 DR MELLICHAMP ROAD	
B		1 PROMENADE STREET	PROMENADE STREET & DR MELLICHAMP ROAD
		2 DR MELLICHAMP ROAD	
C		1 GOETHE ROAD	GOETHE ROAD & DR MELLICHAMP ROAD
		2 DR MELLICHAMP ROAD	



A DR MELLICHAMP DRIVE & PROMENADE STREET
 SCALE: 1"=20'-0"



B DR MELLICHAMP DRIVE & PROMENADE STREET
 SCALE: 1"=20'-0"



C DR MELLICHAMP DRIVE & PROMENADE STREET
 SCALE: 1"=20'-0"



NOTE:
 - TO MATCH BLUFFTON EXISTING STREET SIGN WITH ATTACHED STOP SIGN
 - STREET SIGNS AND TEXT TO BE APPROVED BY OWNER OR OWNERS REPRESENTATIVE PRIOR TO ORDERING AND INSTALLATION.

WITH ATTACHED STOP SIGN TO POST

3 // L300 STREET SIGN
 SCALE: NOT TO SCALE



NOTE:
 - TO MATCH BLUFFTON EXISTING WAYFINDING SIGNAGE
 - STREET SIGNS AND TEXT TO BE APPROVED BY OWNER OR OWNERS REPRESENTATIVE PRIOR TO ORDERING AND INSTALLATION.

SIGN A: NORTH FACING
 → M.C. RILEY PARK
 → PARKING DR MELLICHAMP DRIVE

SIGN B: NORTH FACING
 ← PARKING DR MELLICHAMP DRIVE

SOUTH FACING
 → M.C. RILEY PARK

4 // L300 WAYFINDING SIGNAGE - VEHICULAR
 SCALE: NOT TO SCALE



NOTE:
 - TO MATCH BLUFFTON EXISTING 'OLD TOWN BLUFFTON' MAP SIGNAGE

5 // L300 WAYFINDING SIGNAGE - PEDESTRIAN
 SCALE: NOT TO SCALE

© 2017 WJK LTD.
 DESIGN CONCEPTS, DRAWING, SHEETS, LOGOS, SPECIFICATIONS, DETAILS, WRITTEN MATERIAL SHALL NOT BE USED OR REPRODUCED IN WHOLE OR IN PART IN ANY FORM WITHOUT PRIOR WRITTEN CONSENT OF WJK LTD.
 THIS SHEET TO SCALE AT: 24"X36"

SITE DEVELOPMENT PLANS
 FOR
DR. MELLICHAMP DRIVE
 BLUFFTON, SOUTH CAROLINA

DATE: 16 JUNE 2017
 PROJECT NO.: 1624.03
 DRAWN BY: KJ
 CHECKED BY: DK

**BID SET,
 NOT FOR
 CONSTRUCTION**

REVISIONS:

DRAWING TITLE
DETAILS 1

DRAWING NUMBER

L300



MANUFACTURER: VICTOR STANLEY
 PRODUCT: RBW-28 (6)
 MATERIAL: IPE WOOD WITH BLACK POWDERCOAT METAL FINISH

NOTE: TO BE APPROVED BY OWNER OR OWNER'S REPRESENTATIVE PRIOR TO ORDERING AND INSTALLATION.



MANUFACTURER: VICTOR STANLEY
 PRODUCT: SDC-24
 CAPACITY: 24 GAL
 MATERIAL: BLACK POWDERCOAT METAL FINISH

NOTE: TO BE APPROVED BY OWNER OR OWNER'S REPRESENTATIVE PRIOR TO ORDERING AND INSTALLATION.



TABBY PLANTER TO MATCH EXISTING MAY RIVER ROAD STREETSCAPE

NOTE:
 - TIE IRRIGATION TO PLANTERS
 - TO BE APPROVED BY OWNER OR OWNER'S REPRESENTATIVE PRIOR TO ORDERING AND INSTALLATION.

1 // L301 BENCH
 NOTE TO SCALE

2 // L301 TRASH CAN
 SCALE: NOT TO SCALE

3 // L301 PLANTER
 SCALE: NOT TO SCALE

CONCRETE SPECIFICATION:

- PROVIDE CONSTRUCTION JOINTS EVENLY SPACED ;5' O.C.
- INSTALL FIBER EXPANSION JOINT ONE FOOT FROM EDGE. TOOL EDGES OF EXPANSION MATERIALS. INSTALL JOINT PRIOR TO WASHING AGGREGATE.
- REMOVE TWO SIDE FORMS AFTER WASHING & WASH SIDES TO SOFTEN SHARP EDGES.

MANUFACTURER / ORDER INFORMATION:

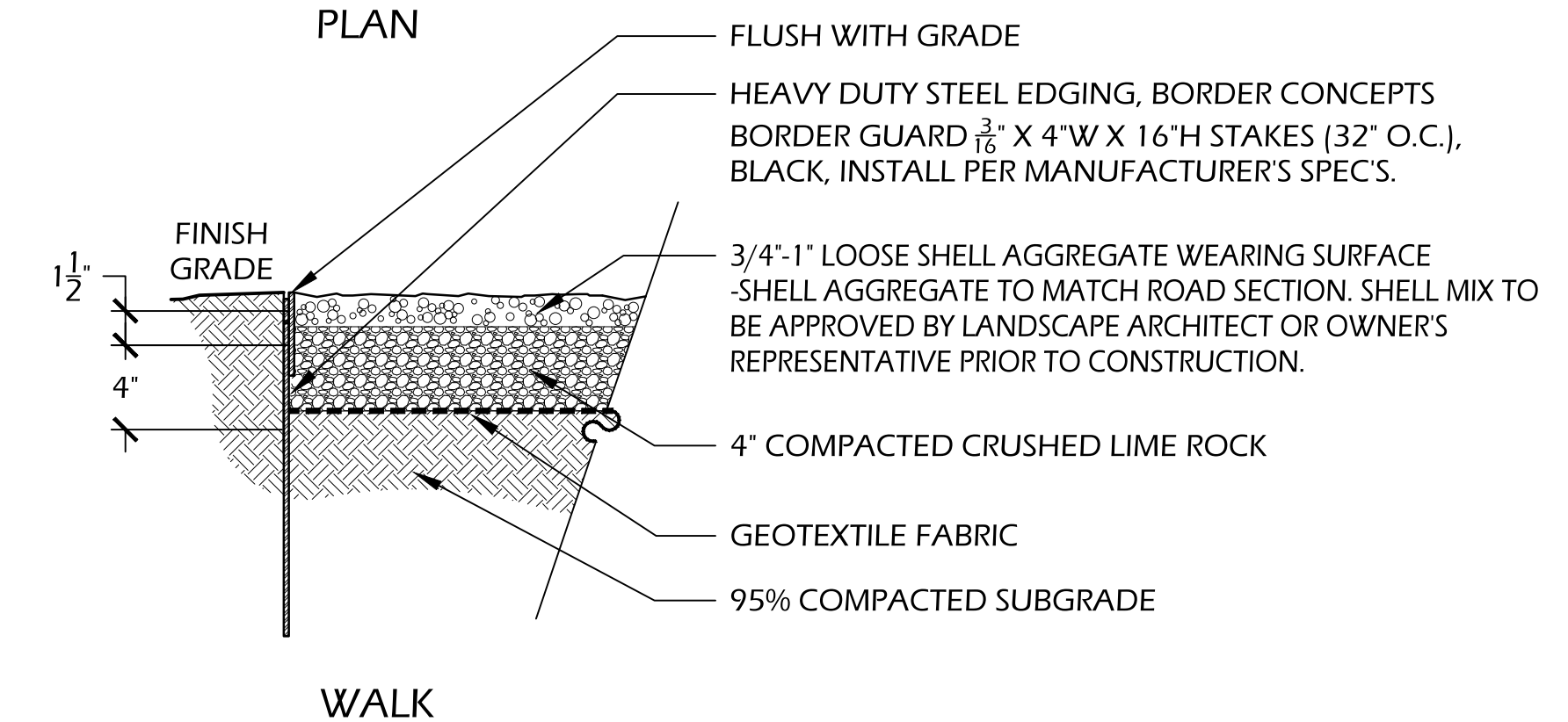
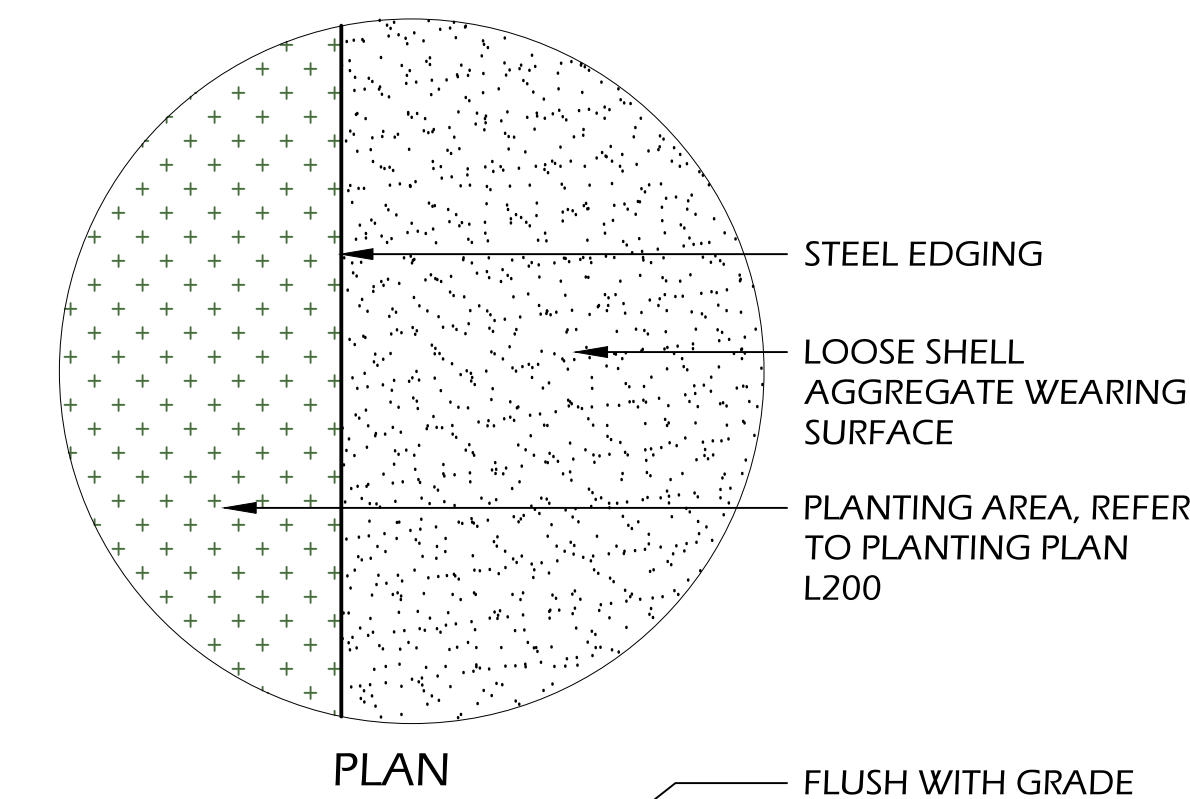
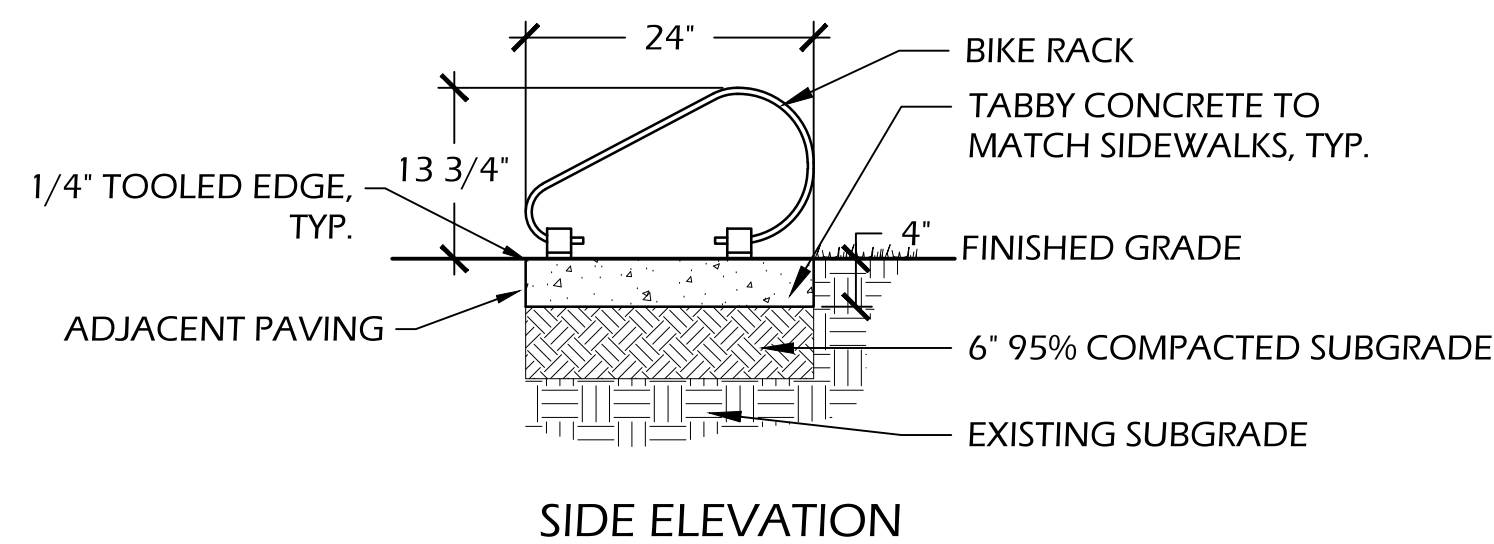
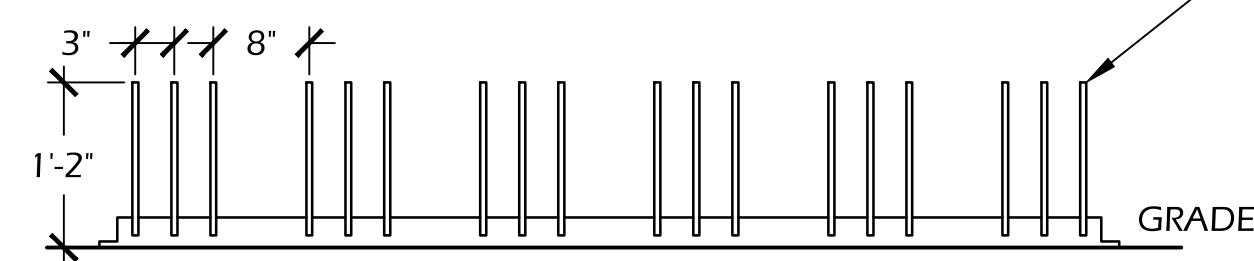
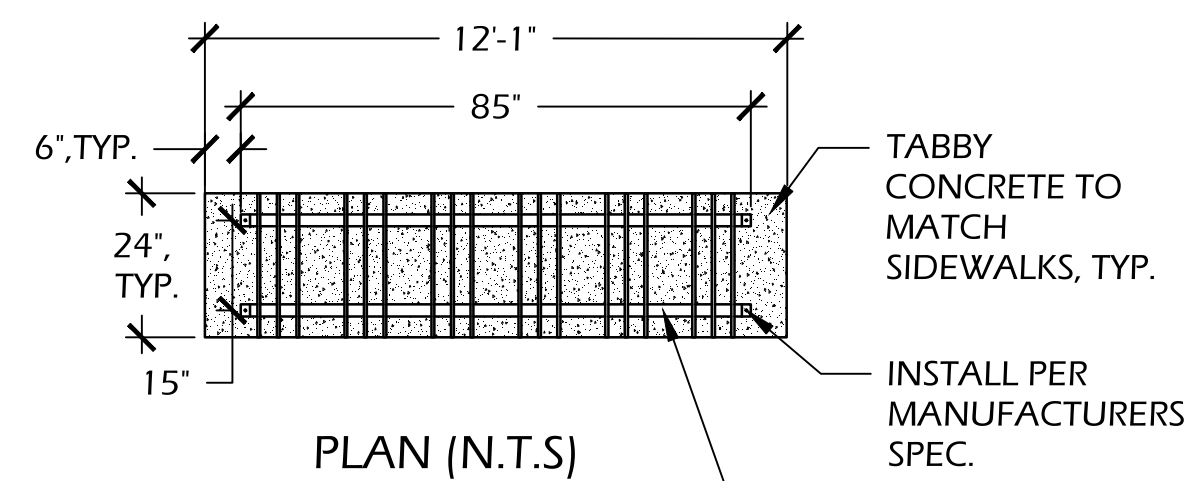
THE PARK AND FACILITIES CATALOG
 PHONE: (800) 695-3503
 WEB: WWW.THEPARKCATALOG.COM

BIKE RACK: LOW PROFILE BIKE STAND
 MATERIAL: METAL
 MODEL: #342-1075, 12 BIKE GROUP LOOP BIKE RACK 85 LONG
 FINISH: POWDER COATED BLACK - SMOOTH FINISH

NOTE: TO BE APPROVED BY OWNER OR OWNER'S REPRESENTATIVE PRIOR TO ORDERING AND INSTALLATION.



EXAMPLE PICTURE



4 // L301 BIKE RACK
 SCALE: NOT TO SCALE

5 // L301 SHELL PAVING
 SCALE: 1 1/2"=1'-0"

© 2017 WJK LTD.
 DESIGN CONCEPTS, DRAWING, SHEETS, LOGOS, SPECIFICATIONS, DETAILS, WRITTEN MATERIAL SHALL NOT BE USED OR REPRODUCED IN WHOLE OR IN PART IN ANY FORM WITHOUT PRIOR WRITTEN CONSENT OF WJK LTD.
 THIS SHEET TO SCALE AT: 24"X36"

SITE DEVELOPMENT PLANS
 FOR
DR. MELLICHAMP DRIVE
 BLUFFTON, SOUTH CAROLINA

DATE: 16 JUNE 2017
 PROJECT NO.: 1624.03
 DRAWN BY: KJ
 CHECKED BY: DK

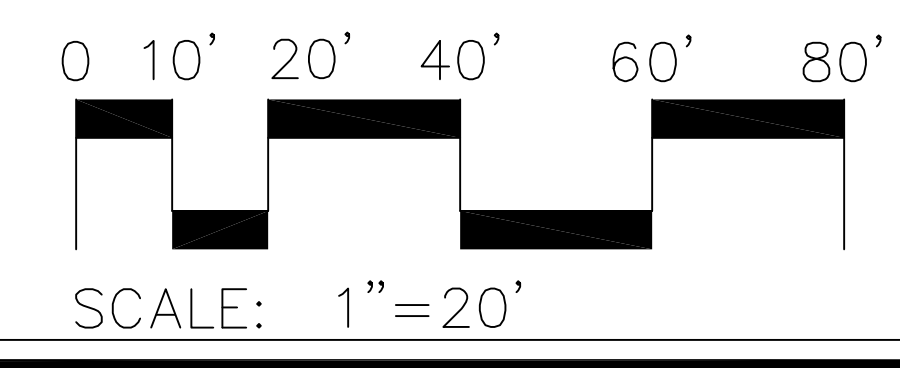
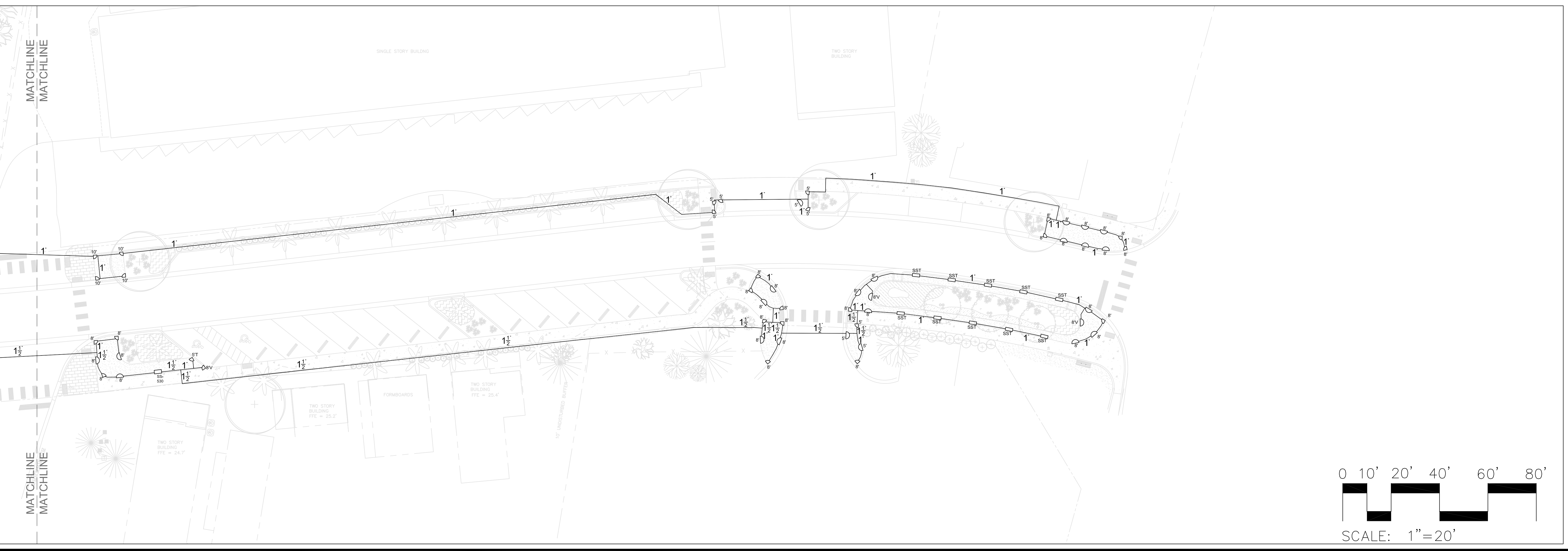
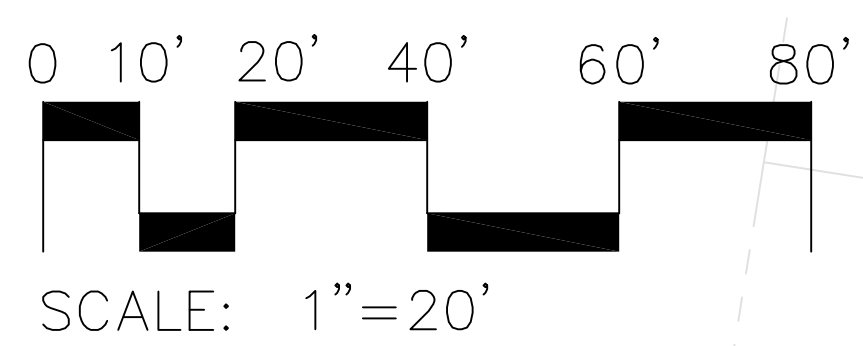
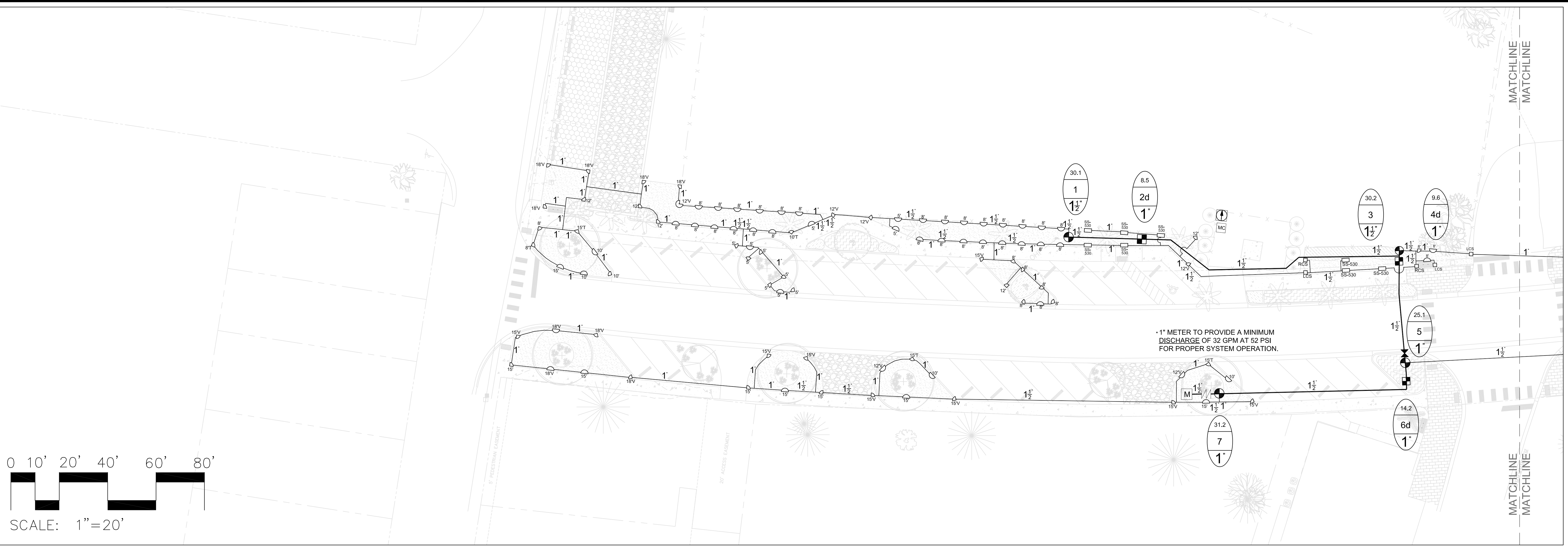
**BID SET,
 NOT FOR
 CONSTRUCTION**

REVISIONS:

DRAWING TITLE
DETAILS 2

DRAWING NUMBER

L301



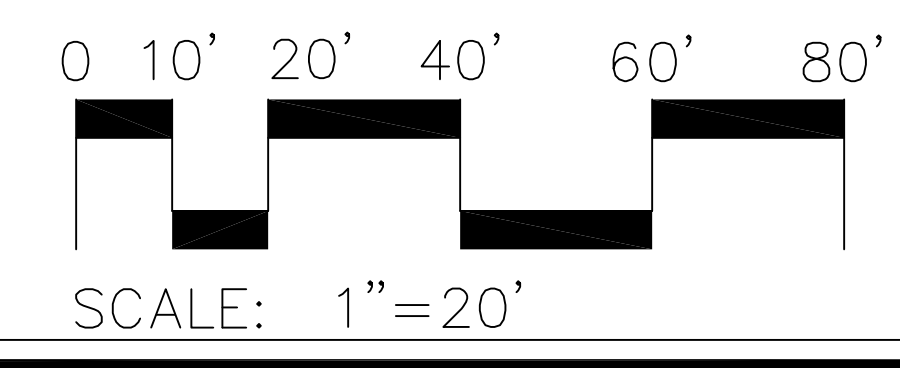
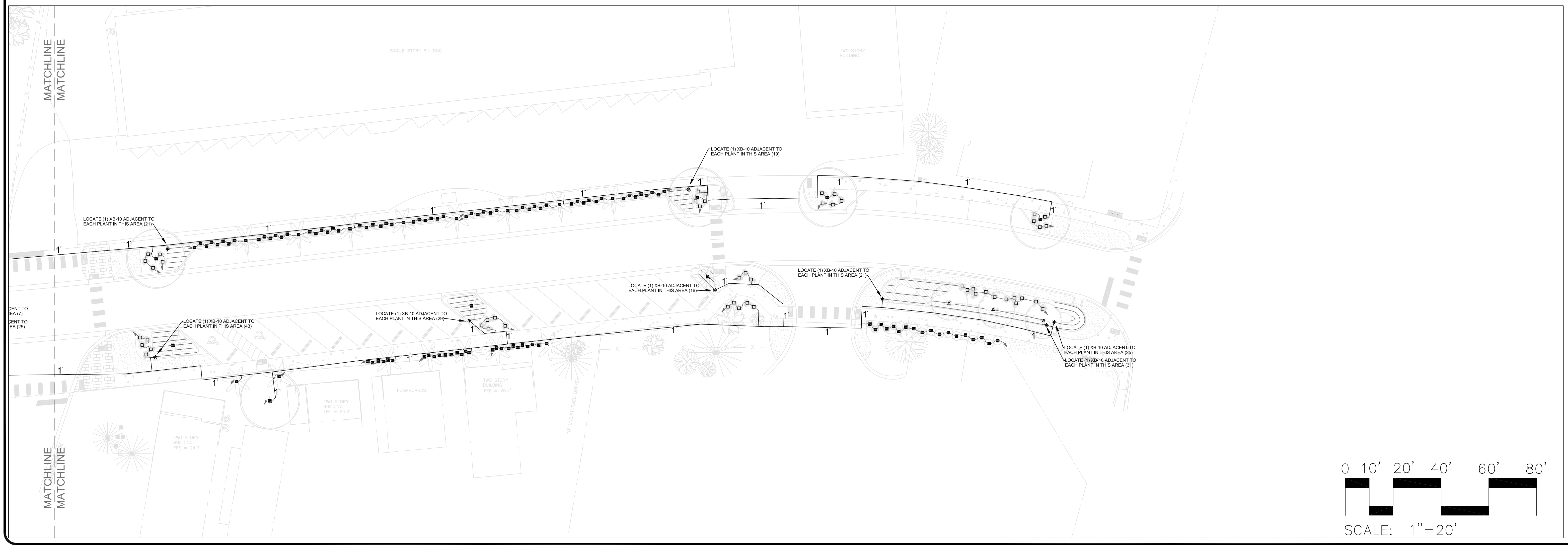
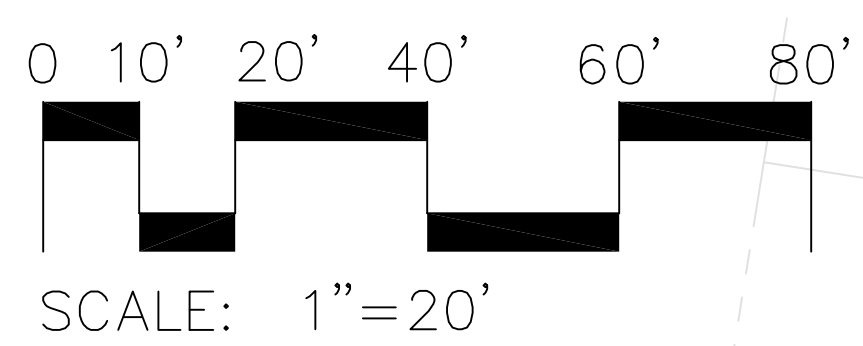
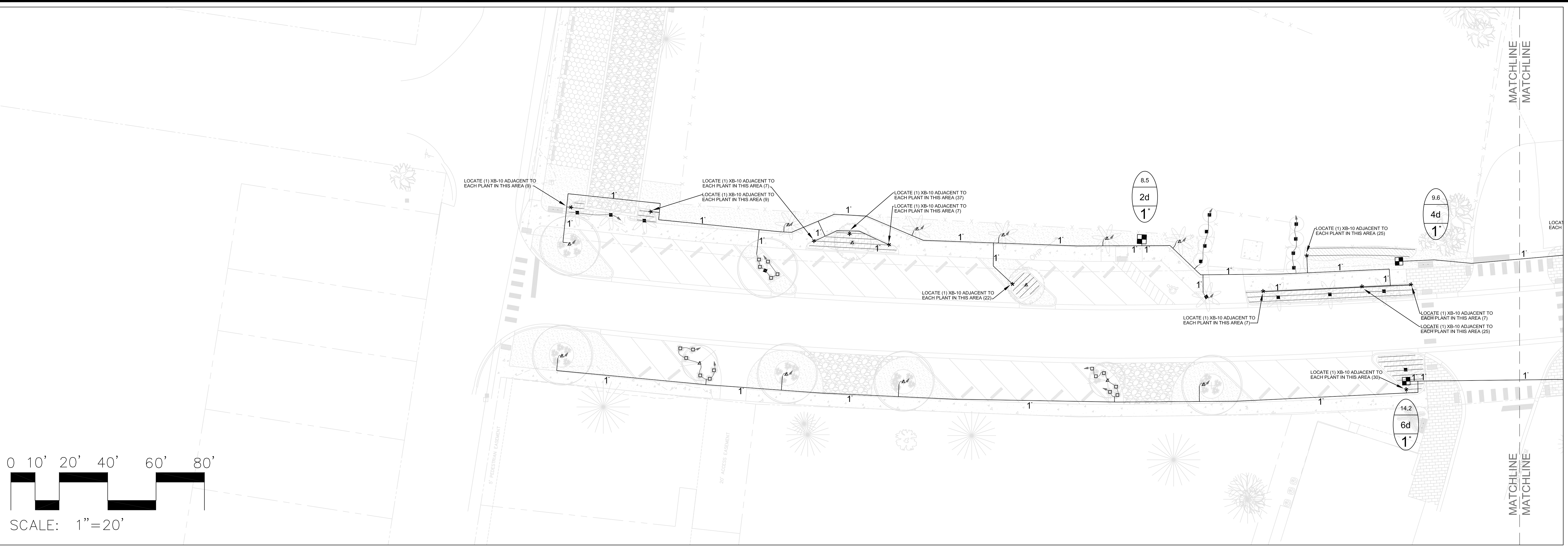
Simmons Irrigation Supply
 P.O. BOX 10
 526 SIDNEYS ROAD
 WALTERBORO, SC 29488
 PH: (843)538-5566
 FAX: (843)538-2068
ssstznc@loucountry.com

THE DESIGN AND SPECIFICATIONS FOR THIS PROJECT PREPARED BY SIMMONS IRRIGATION SUPPLY PERSON OR PERSONS OTHER THAN SAID CLIENT OR HIS AGENTS. THIS DESIGN AND SPECIFICATIONS SHALL BE USED ONLY FOR THE PROJECT AND SHALL NOT BE USED IN CONNECTION WITH ANY OTHER PROJECT WITHOUT THE EXPRESS WRITTEN CONSENT OF SIMMONS IRRIGATION SUPPLY.

DR. MELLICHAMP DRIVE
BLUFFTON, S.C.
 SPRAY IRRIGATION LAYOUT



REVISED 06-16-17
Acad #: 3849-1
Date: 05-12-2017
Scale: 1" = 20'
Drawn: TMM/CMN/ANR
Sheet: 1 OF 4



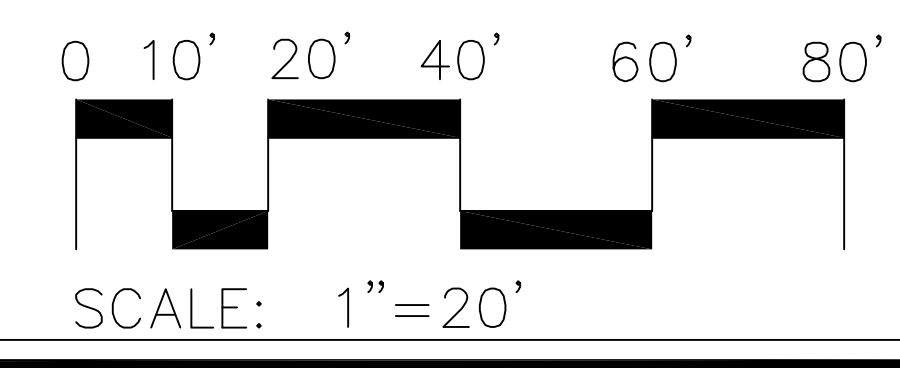
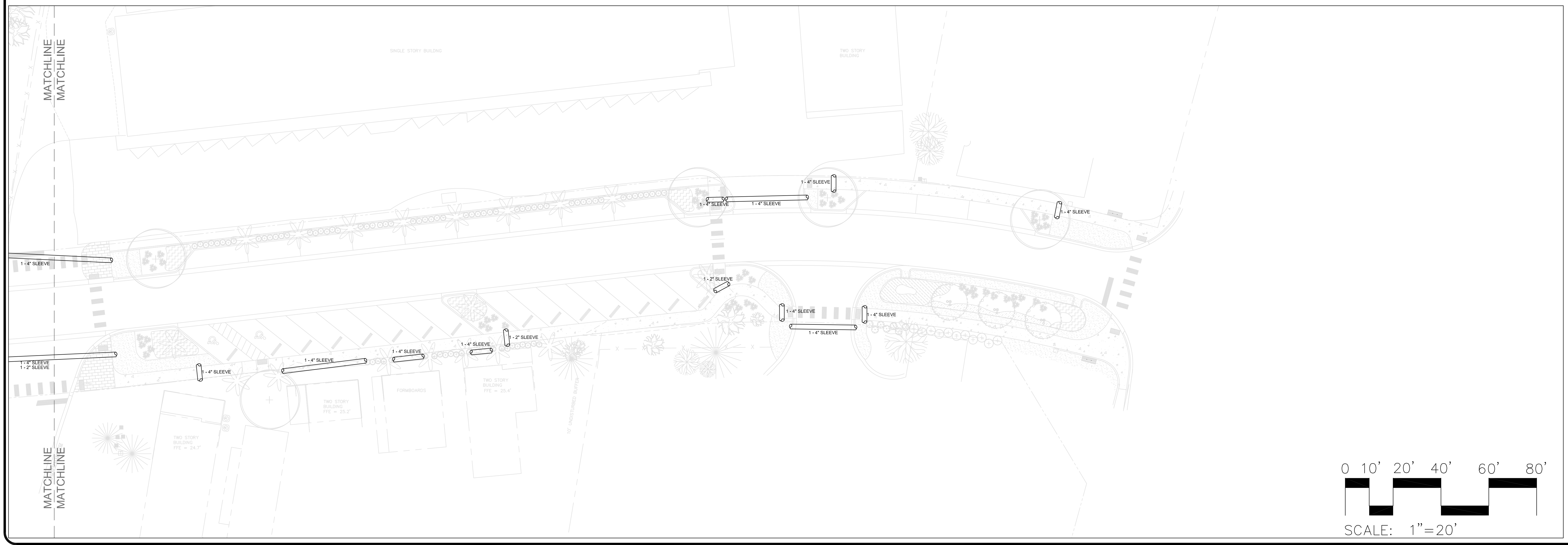
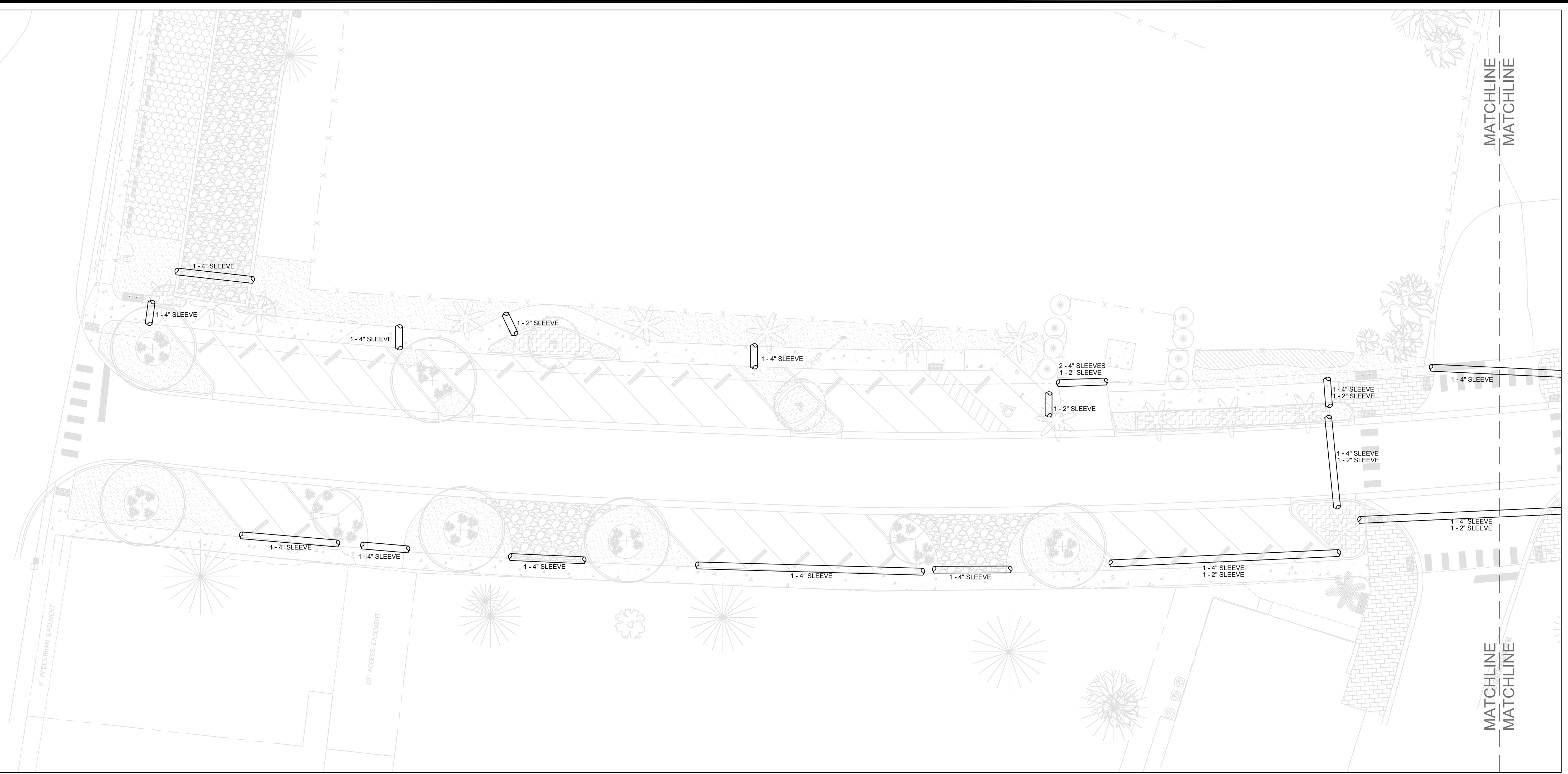
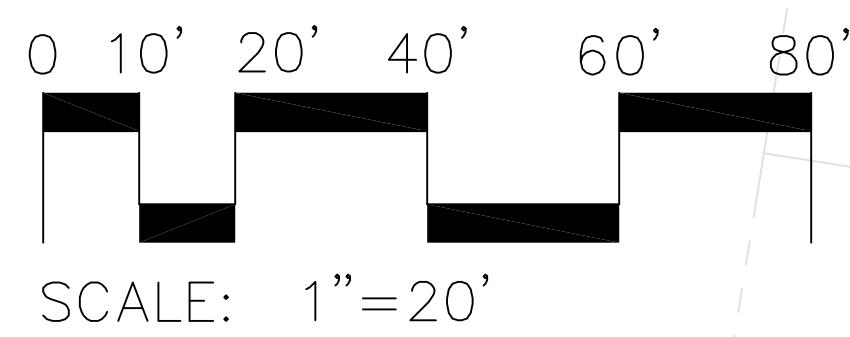
Simmons Irrigation Supply
 P.O. BOX 10
 526 SIDNEYS ROAD
 WALTERBORO, SC 29488
 PH: (843)538-5566
 FAX: (843)538-2068
ssstz@loucountry.com

THE DESIGN AND SPECIFICATIONS FOR THIS PROJECT PREPARED BY SIMMONS IRRIGATION SUPPLY ARE BASED ON THE INFORMATION PROVIDED BY THE CLIENT. SIMMONS IRRIGATION SUPPLY, PERSON OR PERSONS OTHER THAN SAID CLIENT OR HIS AGENTS, THIS DESIGN AND SPECIFICATIONS ARE NOT TO BE USED FOR ANY OTHER PROJECTS WITHOUT THE EXPRESS WRITTEN CONSENT OF SIMMONS IRRIGATION SUPPLY.

**DR. MELLICHAMP DRIVE
 BLUFFTON, S.C.**
 DRIP IRRIGATION LAYOUT



REVISED	06-16-17
Acad #:	3849-1
Date:	05-12-2017
Scale:	1" = 20'
Drawn:	TMM/CMN/ANR
Sheet:	2 OF 4



Simmons Irrigation Supply
 P.O. BOX 10
 526 SIDNEYS ROAD
 WALTERBORO, SC 29488
 PH: (843)538-5566
 FAX: (843)538-2068
ssstz@loucountry.com

THE DESIGN AND SPECIFICATIONS FOR THIS PROJECT PREPARED BY SIMMONS IRRIGATION SUPPLY PERSON OR PERSONS OTHER THAN SAID CLIENT OR HIS AGENTS. THIS DESIGN AND SPECIFICATIONS SHALL BE USED ONLY FOR THE PROJECT AND SHALL NOT BE USED IN CONNECTION WITH ANY OTHER PROJECT WITHOUT THE EXPRESS WRITTEN CONSENT OF SIMMONS IRRIGATION SUPPLY.

**DR. MELLICHAMP DRIVE
 BLUFFTON, S.C.**
 IRRIGATION SLEEVE LAYOUT



REVISED 06-16-17
Acad #: 3849-1
Date: 05-12-2017
Scale: 1" = 20'
Drawn: TMM/CMN/ANR
Sheet: 3 OF 4

