



THE CITY OF DAYTONA BEACH
OFFICE OF THE PURCHASING AGENT

Post Office Box 2451
Daytona Beach, Florida 32115-2451

Phone (386) 671-8080
Fax (386) 671-8085

ADDENDUM NO. 5

DATE: **August 15, 2018**
PROJECT: **ITB 0318-2360**
FIRST STEP SHELTER BUILDING

OPENING DATE: **AUGUST 24, 2018**

This addendum is hereby incorporated into the Request for Proposal for the project referenced above. The following items are clarifications, corrections, additions, deletions and/or revisions to and shall take precedence over the original documents. Additions are indicated by underlining, deletions are indicated by ~~strikethrough~~.

1. Answers to Bidders' questions:

Question 1: Can temporary power be utilized from the new pump station that will be installed for this project?

Response: Power is not to be pulled from the pump station.

Question 2: How long until permanent power be available from FPL?

Response: Unknown at this time.

Question 3: Who will responsible for paying and connecting for temporary power to continue work on this project?

Response: Temporary power will be the responsibility of the contractor awarded vertical construction of the building.

Question 4: Will the city entertain an add Alternate to include the foundation of the building in Phase Two and remove it from the Phase One contract?

Response: No, the foundation package is currently under contract with P&S Paving, Inc.

2. The Plans are hereby MODIFIED as follows:

FOUNDATION PACKAGE:

ADD.5.01 Sheet A2.0 - A2.1 - Floor Plan and Dimension Plans:

At the area between the Health Ward and the Administration Areas, revise rooms 112, 113 and 113A as shown on attached sketch SK-1.

Revise door 13 from being an exterior door to be an interior door similar to door 11. Room finishes at 113A to match Toilet Rooms.

ADD.5.02 Sheets S2.0, S2.1 and S2.2 - Foundation Plan, Slab Plan and Low Roof Framing Plan:

At grid line 5, relocate steel column as shown on attached sketches. Delete exterior door opening between grid lines 4.1 and 5.

Note: Steel beams at ridge line stay same size, the lengths revise.

ADD.5.03 Sheets M-101 and M-601- Mech. Floor Plan and Mech. Schedules:

At rooms 112, 113 and 113A revise the supply and exhaust air as shown on attached sketches. Revise exhaust fan as shown on sketches.

ADD.5.04 Sheets P-101, P-111. P-901 and P-902 - Gravity and Pressure Piping Plans and Isometrics:

At rooms 112, 113 and 113A revise plumbing layouts and piping as shown on attached sketches.

ADD.5.05 Sheets E-101 and E-102 - Power and Lighting Plans:

At rooms 112, 113 and 113A revise the power and lighting as shown on attached sketches.

ADD.5.06 Sheets T-201 and T-202 - Data/ Voice and Security Plans:

At rooms 112, 113 and 113A revise the power and lighting as shown on attached sketches.

ADD.5.07 Sheets E-101 and E-102 - Power and Lighting Plans:

At rooms 112, 113 and 113A revise the voice, data and security as shown on attached sketches.

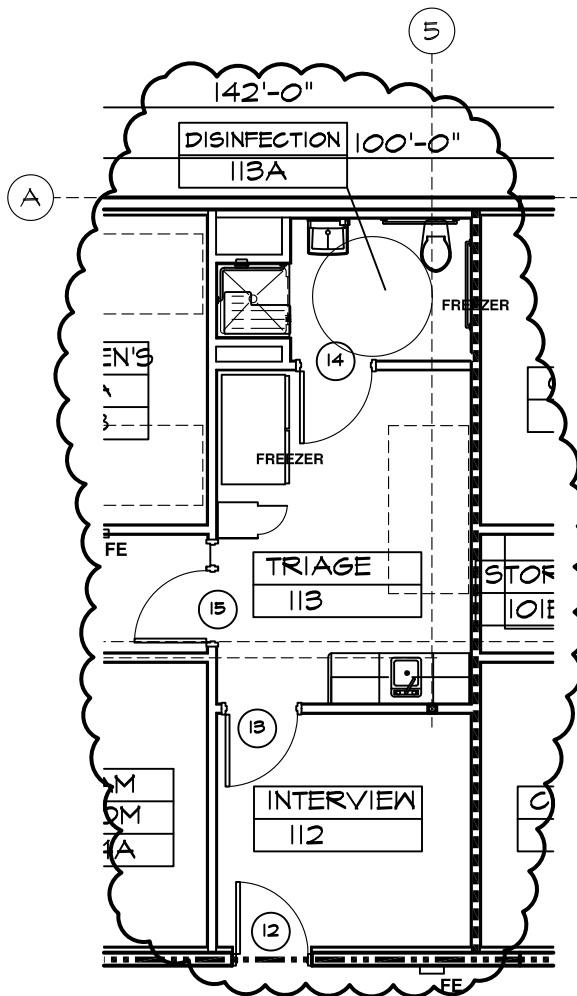
3. All other terms and conditions remain the same.

Proposers shall acknowledge receipt of this addendum on page BID PROPOSAL LETTER-3.

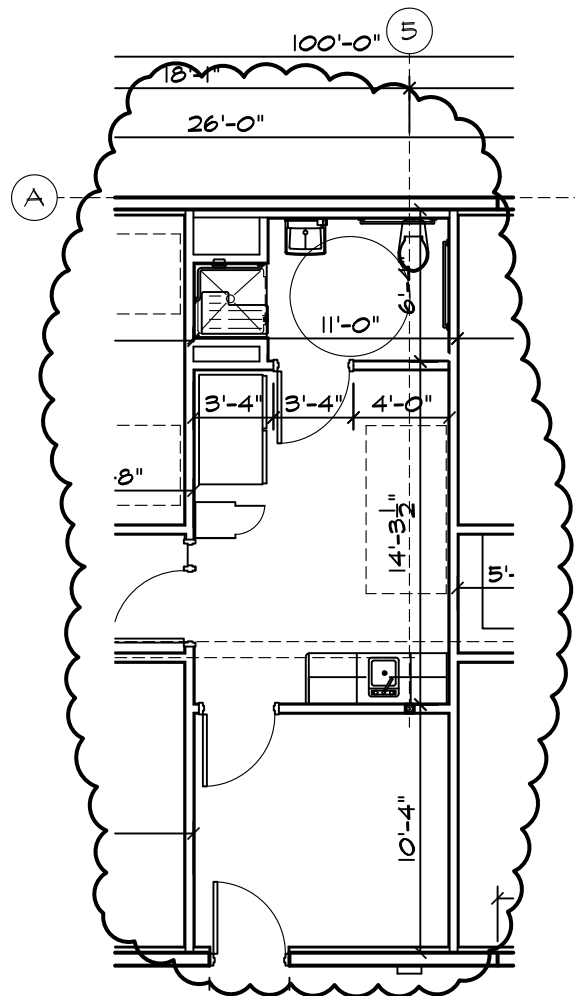
The City of Daytona Beach

Joanne Flick, CPPO, CPPB
Purchasing Agent

Remember to register with the City of Daytona Beach at www.vendorregistry.com to be notified of future bid opportunities with the City. As of 9-30-18 we will no longer be using our current system.



PARTIAL FLOOR PLAN SCALE : 1/8" = 1'-0"
TRIAGE / DISINFECTION / INTERVIEW



PARTIAL DIMENSION PLAN SCALE : 1/8" = 1'-0"
TRIAGE / DISINFECTION / INTERVIEW

DAVID D. OGLE AR93986
 JOHN E. HALL AR. 0010727

REFERENCE SHEETS A2.0 - A2.1

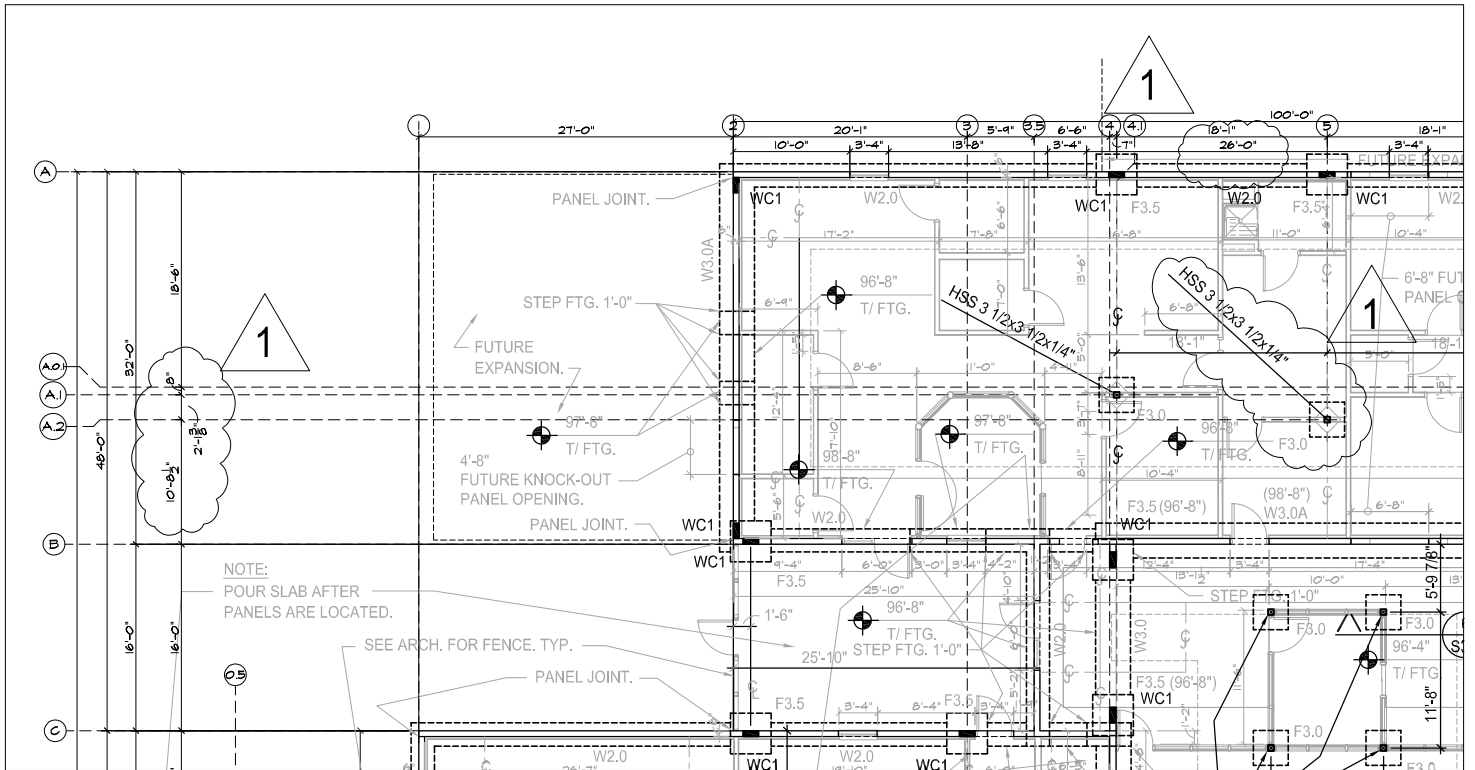
REVISION/ SUBMISSIONS	DATE
ADD. #5 TRIAGE REVISION	19-AUG-2018



FIRST STEP SHELTER
 3889 WEST INTERNATIONAL SPEEDWAY BLVD.
 DAYTONA BEACH, FLORIDA
 ADDENDUM 5 IRB 0318-2360 AUGUST 15, 2018
 PAGE 3 OF 12

HALL & OGLE ARCHITECTS, INC.
 AA-C000925
 208 MAGNOLIA AVENUE DAYTONA BEACH, FLORIDA 32114
 PH (386) 255-6163 FAX (386)257-5650

COMMISSION NO. 1431	PROJECT ARCH: JEH	DATE: 6-AUG-2018
	DRAWN: JB/JEH	



PARTIAL FOUNDATION PLAN
TRIAGE / DISINFECTION / INTERVIEW

SCALE : 1/16" = 1'-0"

fci STRUCTURAL ENGINEERS, INC.
 35 years of service
 680 East SR 434 Florida EB #3746
 Winter Springs, Florida 32708 Eddie L. Cox, P.E.
 Phone (407) 327-5363 Florida P.E. #27499
 Fax (407) 327-5366 email:fci@fciengineering.com

TO THE BEST OF MY KNOWLEDGE THE DRAWINGS AND SPECIFICATIONS COMPLY WITH THE APPLICABLE MINIMUM BUILDING CODES.

1758

REFERENCE SHEETS S2.0

NO.	REVISION/ SUBMISSIONS	DATE
1	ADDENDUM #5	13-AUG-2018



FIRST STEP SHELTER

3889 WEST INTERNATIONAL SPEEDWAY BLVD.
 DAYTONA BEACH, FLORIDA

ADDENDUM 5 - IRB 0318 2360 - AUGUST 15, 2018

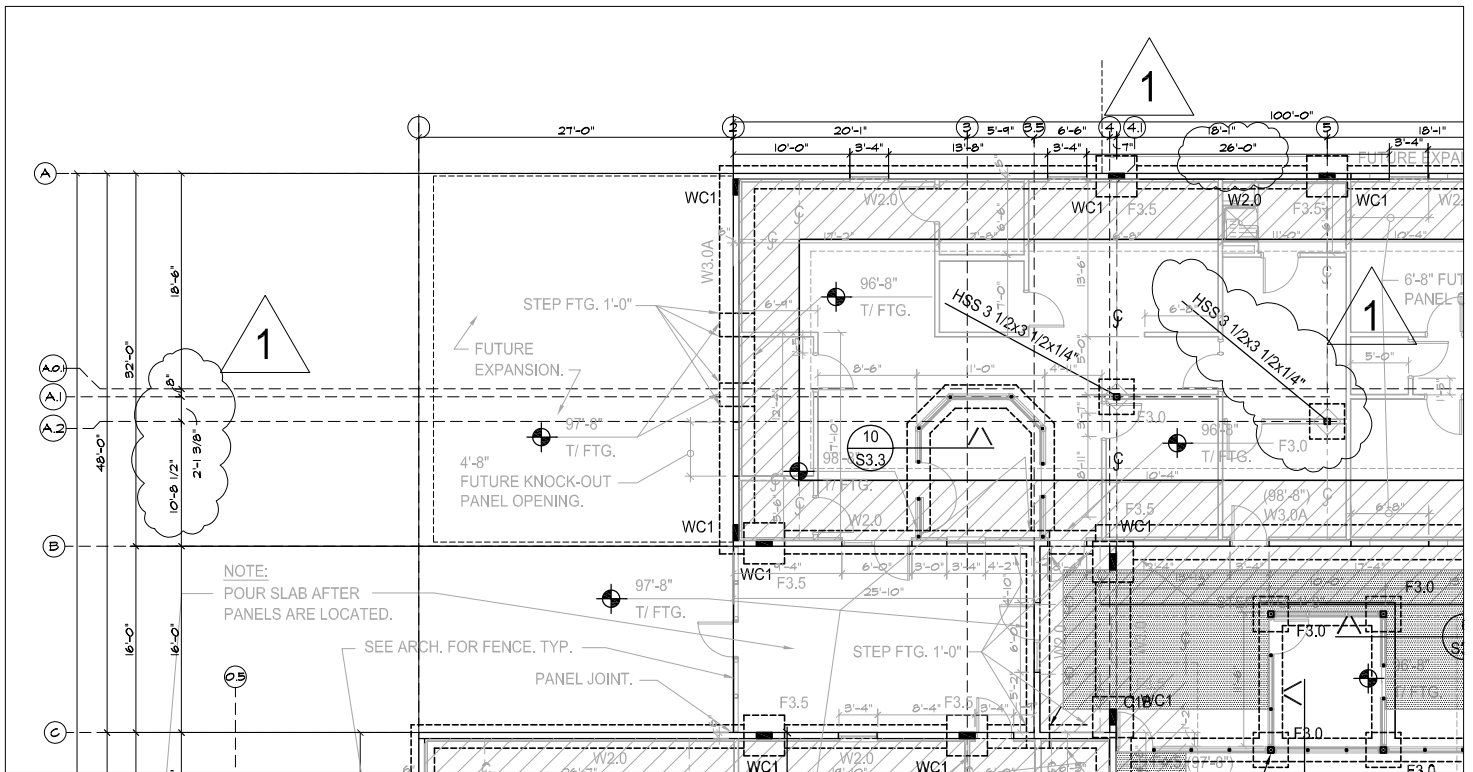


HALL & OGLE ARCHITECTS, INC.
 AA-C000925

208 MAGNOLIA AVENUE
 DAYTONA BEACH, FLORIDA 32114

PH (386) 255-6163
 FAX (386) 257-5650

COMMISSION NO. 1431	PROJECT ARCH: JEH DRAWN: RLP	DATE: 6-AUG-2018
------------------------	---------------------------------	------------------



PARTIAL SLAB PLAN
TRIAGE / DISINFECTION / INTERVIEW

SCALE : 1/16" = 1'-0"

fci STRUCTURAL ENGINEERS, INC.
 35 years of service
 680 East SR 434 Florida EB #3746
 Winter Springs, Florida 32708 Eddie L. Cox, P.E.
 Phone (407) 327-5363 Florida P.E. #27499
 Fax (407) 327-5366 email:fci@fciengineering.com

TO THE BEST OF MY KNOWLEDGE THE DRAWINGS AND SPECIFICATIONS COMPLY WITH THE APPLICABLE MINIMUM BUILDING CODES.

1758

REFERENCE SHEETS S2.1

NO.	REVISION/ SUBMISSIONS	DATE
1	ADDENDUM #5	13-AUG-2018

SK-S2
SHEET

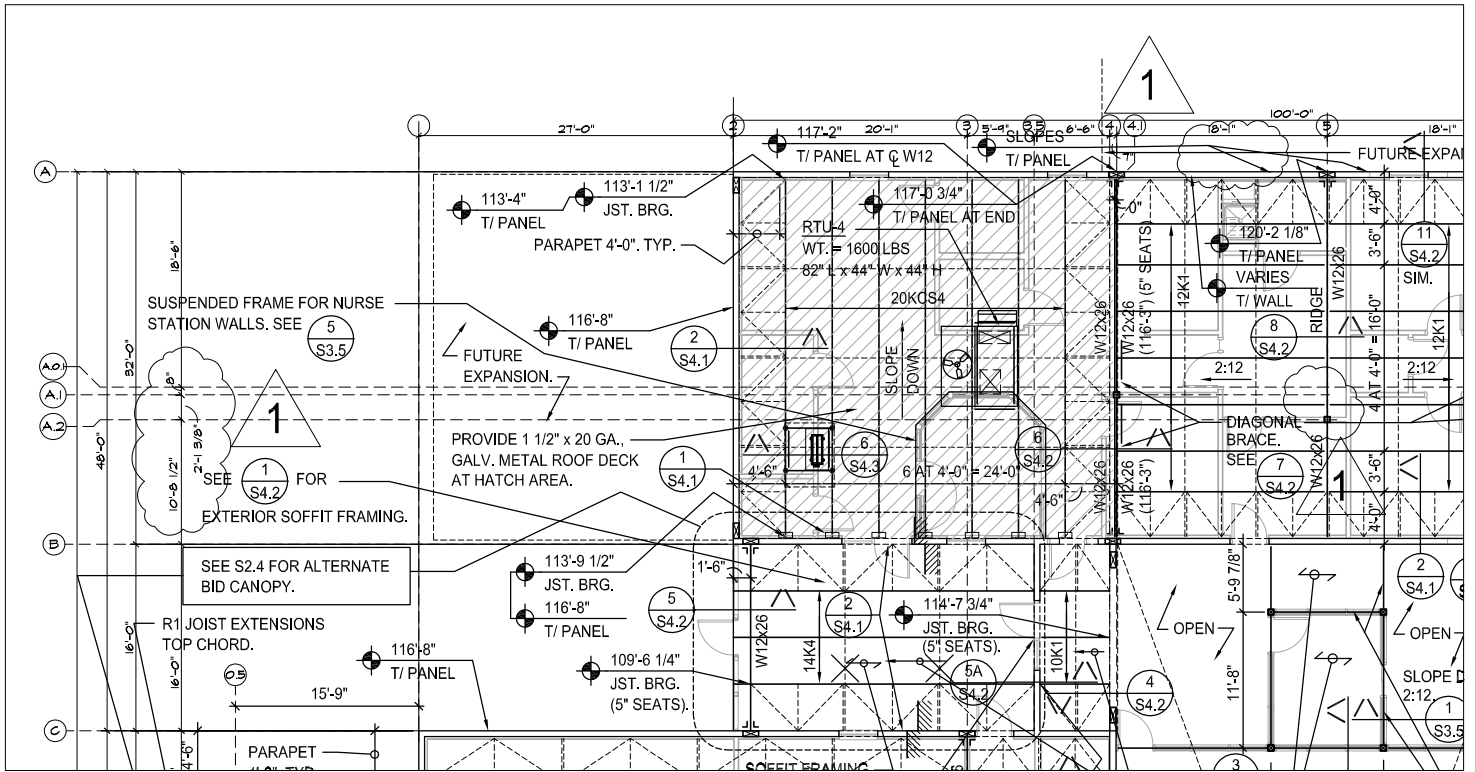
FIRST STEP SHELTER

3889 WEST INTERNATIONAL SPEEDWAY BLVD.
 DAYTONA BEACH, FLORIDA

ADDENDUM 5 IRR 0318 2360 AUGUST 15, 2018

HALL & OGLE ARCHITECTS, INC.
 AA-C000925
 208 MAGNOLIA AVENUE DAYTONA BEACH, FLORIDA 32114
 PH (386) 255-6163 FAX (386)257-5650

COMMISSION NO. 1431	PROJECT ARCH: JEH DRAWN: RLP	DATE: 6-AUG-2018
-------------------------------	---------------------------------	------------------



PARTIAL LOW ROOF FRAMING PLAN
TRIAGE / DISINFECTION / INTERVIEW

SCALE : 1/16" = 1'-0"

fci STRUCTURAL ENGINEERS, INC.
 35 years of service
 680 East SR 434 Florida EB #3746
 Winter Springs, Florida 32708 Eddie L. Cox, P.E.
 Phone (407) 327-5363 Florida P.E. #27499
 Fax (407) 327-5366 email:fci@fciengineering.com

TO THE BEST OF MY KNOWLEDGE THE DRAWINGS AND SPECIFICATIONS COMPLY WITH THE APPLICABLE MINIMUM BUILDING CODES.

1758

REFERENCE SHEETS S2.2

NO.	REVISION/ SUBMISSIONS	DATE
1	ADDENDUM #5	13-AUG-2018

SK-53 SHEET

FIRST STEP SHELTER

3889 WEST INTERNATIONAL SPEEDWAY BLVD.
 DAYTONA BEACH, FLORIDA

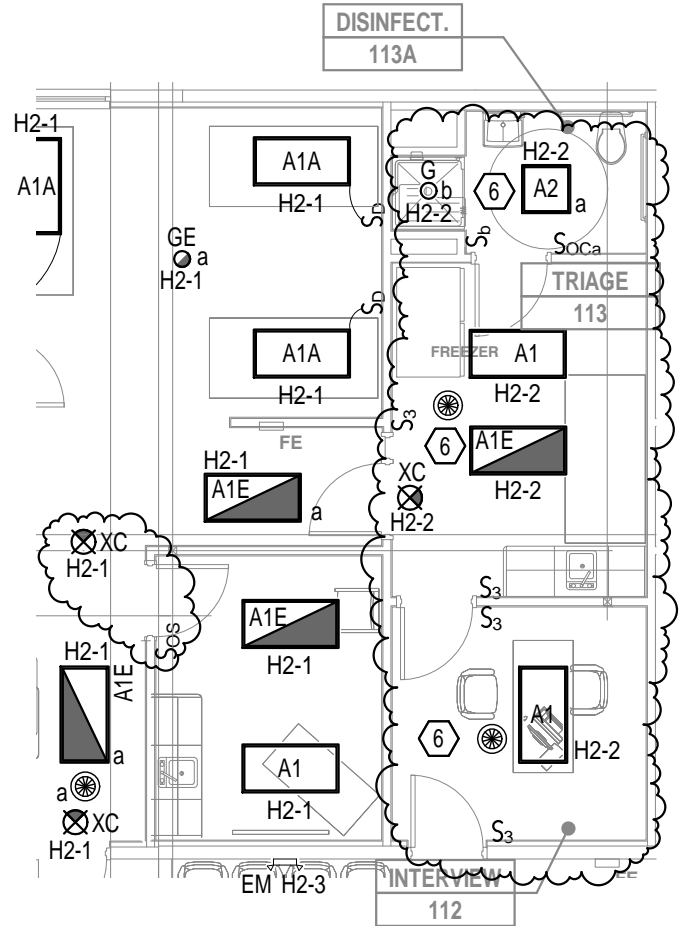
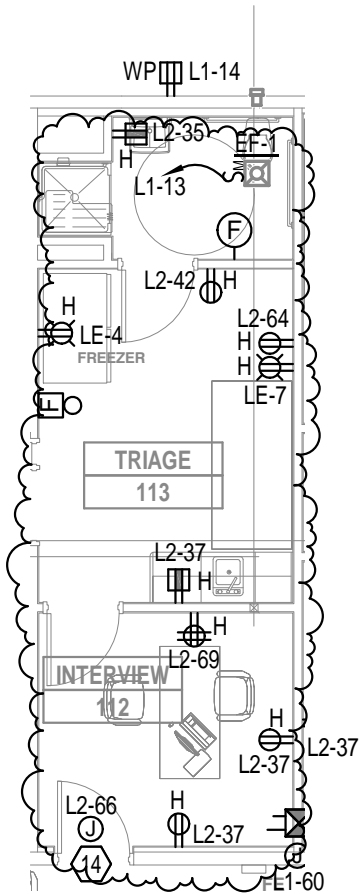
ADDENDUM 5 - IRB 0318 2360 - AUGUST 15, 2018

HALL & OGLE ARCHITECTS, INC.
 AA-C000925
 208 MAGNOLIA AVENUE DAYTONA BEACH, FLORIDA 32114
 PH (386) 255-6163 FAX (386)257-5650

COMMISSION NO. 1431	PROJECT ARCH: JEH DRAWN: RLP	DATE: 6-AUG-2018
------------------------	---------------------------------	------------------

CODED NOTES

6. LIGHTING CONTROLS IN THIS ROOM SHALL BE CONFIGURED FOR MANUAL ON, MANUAL/VACANCY OFF OPERATION.



1 TRIAGE POWER SKETCH
1/8" = 1'-0"

2 TRIAGE LIGHTING SKETCH
1/8" = 1'-0"

REFERENCE SHEETS E-101 & E-102

Above Group
ENGINEERING | DESIGN | CONSULTING

Above Group, Inc.
305 East Dr., Suite H
Melbourne, Florida
32904

PH: 321.345.9026
www.abovegroupinc.com
COA/CA Lic. No. 31120
AGE NO.: 0118001

NO.	REVISION/ SUBMISSIONS	DATE
ADD. #5	TRIASGE REVISION	13 AUG 2018

SKE001
SHEET

FIRST STEP SHELTER

3889 WEST INTERNATIONAL SPEEDWAY BLVD.
DAYTONA BEACH, FLORIDA

ADDENDUM 5 IRB 0318-2360 AUGUST 15, 2018
PAGE 7 OF 12

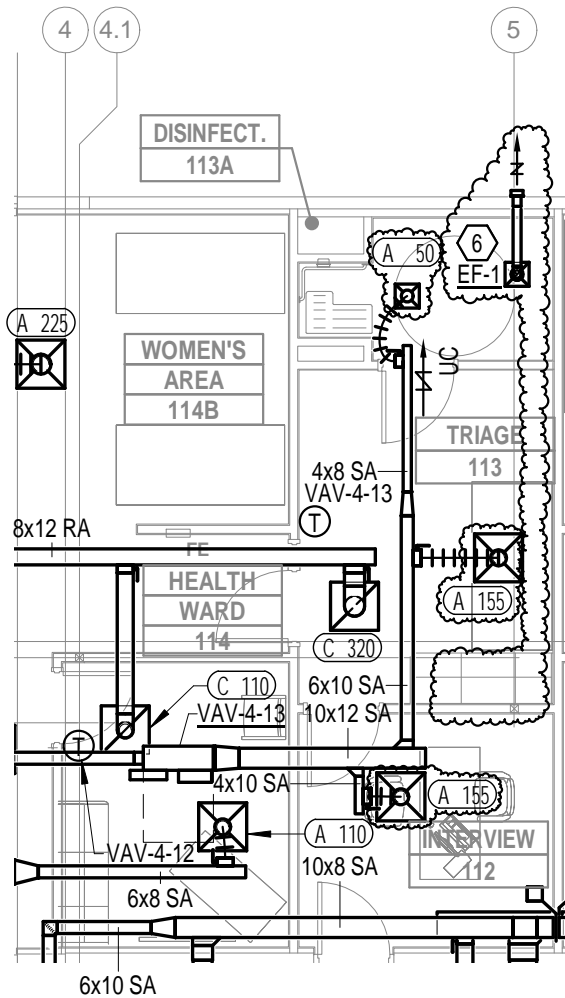


HALL & OGLE ARCHITECTS, INC.
AA-C000925

208 MAGNOLIA AVENUE
DAYTONA BEACH, FLORIDA 32114

PH (386) 255-6163
FAX (386) 257-5650

COMMISSION NO. 1431	PROJECT ARCH: JEH DRAWN: cvm	DATE: 08/06/18
-------------------------------	---------------------------------	----------------



1 MECHANICAL PARTIAL PLAN
 1/8" = 1'-0"

Above Group, Inc.
 305 East Dr., Suite H
 Melbourne, Florida 32904
 PH: 321.345.9026
 www.abovegroupinc.com
 COA/CA Lic. No. 31120
 AGE NO.: 0118001

NO.	REVISION/ SUBMISSIONS	DATE
ADD. #5	TRIAGE REVISION	13 AUG 2018

REFERENCE SHEET M-101

SKM-001
SHEET

FIRST STEP SHELTER
 3889 WEST INTERNATIONAL SPEEDWAY BLVD.
 DAYTONA BEACH, FLORIDA
 ADDENDUM 5 IRB 0318-2360 AUGUST 15, 2018
 PAGE 8 OF 12

HALL & OGLE
ARCHITECTS, INC.
 208 MAGNOLIA AVENUE
 DAYTONA BEACH, FLORIDA 32114
 PH (386) 255-6163
 FAX (386) 257-5650

COMMISSION NO. 1431	PROJECT ARCH: JEH DRAWN: MRK	DATE: 08/06/18
-------------------------------	---------------------------------	----------------

NOTE:

1. EF-7 & EF-8 WERE REMOVED FROM SCHEDULE.

EXHAUST FAN SCHEDULE

MARK	MANUFACTURER	MODEL NO.	TYPE	CFM	STATIC PRESS.	FAN RPM	ELECTRICAL		DRIVE TYPE	MAX SONES	NOTES
							WATTS/HP	V/PH/HZ			
EF-1	BROAN	XB80	CEILING CABINET	70	0.25	-	7.6 W	120/1/60	DIRECT	0.3	1, 2, 3, 5
EF-2	BROAN	XB80	CEILING CABINET	80	0.25	-	7.6 W	120/1/60	DIRECT	0.3	2, 3, 5
EF-3	LOREN COOK	120C13D	DOWNBLAST CENTRIFUGAL ROOF	825	0.5	1148	1/4 HP	115/1/60	DIRECT	6.6	1, 2, 3, 4, 6
EF-4	LOREN COOK	101C15D	DOWNBLAST CENTRIFUGAL ROOF	575	0.5	1468	1/8 HP	115/1/60	DIRECT	8.2	1, 2, 3, 4, 6
EF-5	LOREN COOK	90SQN10D	SQUARE INLINE	175	0.25	1042	1/6 HP	115/1/60	DIRECT	3.0	1, 2, 3, 4
EF-6	LOREN COOK	90SQN10D	SQUARE INLINE	150	0.25	980	1/6 HP	115/1/60	DIRECT	2.2	1, 2, 3, 4

NOTES:

1. PROVIDE WITH SPEED CONTROLLER.
2. PROVIDE DISCONNECT SWITCH.
3. PROVIDE BACKDRAFT DAMPER.
4. FAN SHALL OPERATE CONTINUOUSLY.
5. INTERLOCK FAN OPERATION WITH LIGHTING CONTROLS.
6. FAN SHALL BE MIAMI-DADE NOA RATED.



NO.	REVISION/ SUBMISSIONS	DATE
ADD. #5	TRIAGE REVISION	13 AUG 2018

REFERENCE SHEET M-601

SKM-002
SHEET

FIRST STEP SHELTER

3889 WEST INTERNATIONAL SPEEDWAY BLVD.
DAYTONA BEACH, FLORIDA

ADDENDUM 5 IRB 0318-2360 AUGUST 15, 2018
PAGE 9 OF 12



HALL & OGLE
ARCHITECTS, INC.

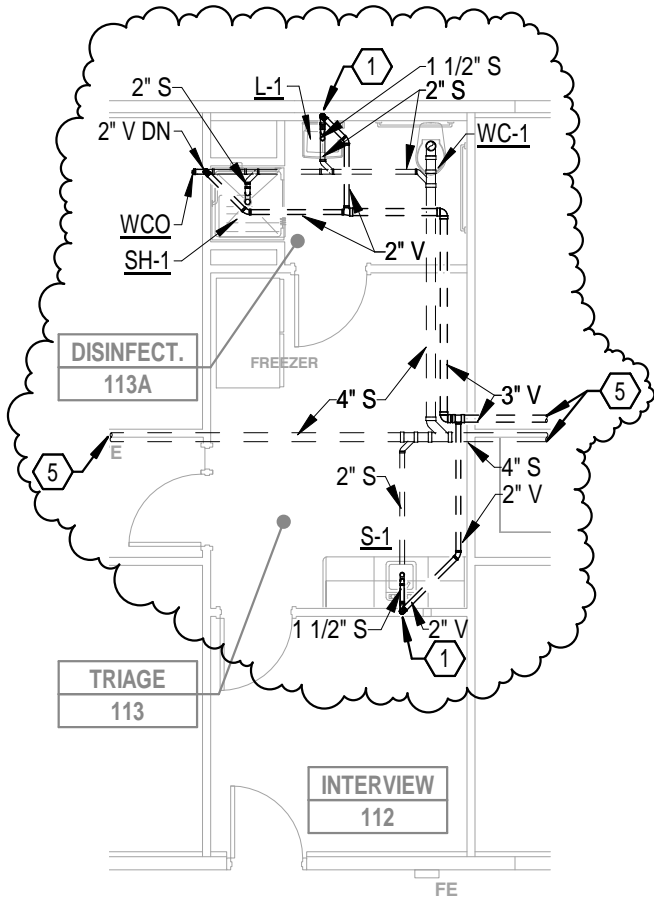
208 MAGNOLIA AVENUE
DAYTONA BEACH, FLORIDA 32114

PH (386) 255-6163
FAX (386) 257-5650

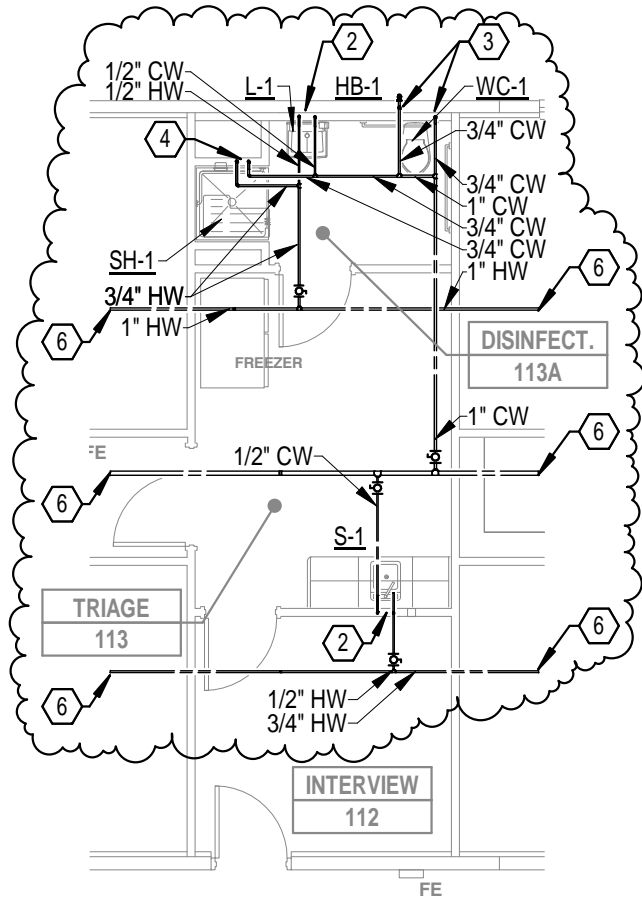
COMMISSION NO. 1431	PROJECT ARCH: JEH DRAWN: MRK	DATE: 08/06/18
-------------------------------	---------------------------------	----------------

XX CODED NOTES:

1. 2" VENT ROUTED DOWN TO SERVICE FIXTURE.
2. 1/2" COLD AND HOT WATER PIPE ROUTED DOWN TO SERVE FIXTURE.
3. 3/4" COLD WATER PIPING ROUTED DOWN TO SERVICE FIXTURE.
4. 3/4" COLD WASTER AND HOT WATER PIPE ROUTED DOWN TO SERVICE FIXTURE.
5. REFER RO SHEET P-101, VIEW 1 FOR CONTINUATION.
6. REFER TO SHEET P-111, VIEW 1 FOR CONTINUATION.



1 PARTIAL GRAVITY PLAN
1/8" = 1'-0"



2 PARTIAL PRESSURE PLAN
1/8" = 1'-0"

REFERENCE SHEETS P-101 & P-111

bove Group
ENGINEERING | DESIGN | CONSULTING

Above Group, Inc.
305 East Dr., Suite H
Melbourne, Florida
32904

PH: 321.345.9026
www.abovegroupinc.com
COA/CA Lic. No. 31120
AGE NO.: 0118001

NO.	REVISION/ SUBMISSIONS	DATE
ADD. #5	TRIAGE REVISION	13 AUG 2018

SKP-001
SHEET

FIRST STEP SHELTER

3889 WEST INTERNATIONAL SPEEDWAY BLVD.
DAYTONA BEACH, FLORIDA

ADDENDUM 5 IRB 0318-2360 AUGUST 15, 2018
PAGE 10 OF 12



HALL & OGLE ARCHITECTS, INC.

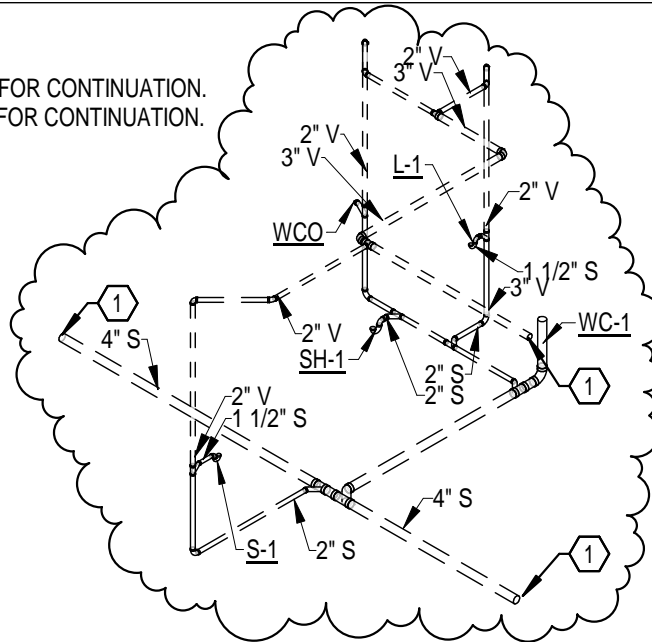
208 MAGNOLIA AVENUE
DAYTONA BEACH, FLORIDA 32114

PH (386) 255-6163
FAX (386) 257-5650

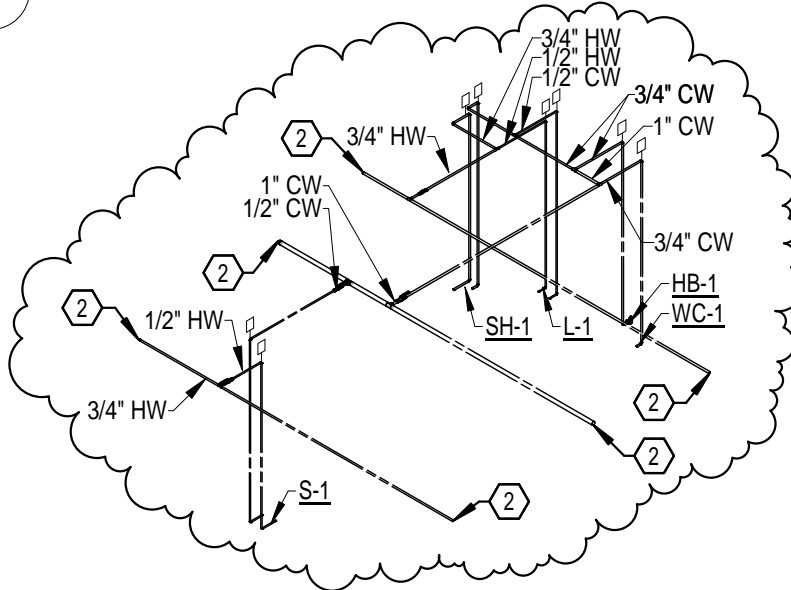
COMMISSION NO. 1431	PROJECT ARCH: JEH DRAWN: GMC	DATE: 08/06/18
-------------------------------	---------------------------------	----------------

XX CODED NOTES:

1. REFER TO SHEET P-901, VIEW 1 FOR CONTINUATION.
2. REFER TO SHEET P-902, VIEW 1 FOR CONTINUATION.



1 PARTIAL GRAVITY PIPING ISOMETRICS



2 PARTIAL PRESSURE PIPING ISOMETRICS

bove Group
ENGINEERING | DESIGN | CONSULTING

Above Group, Inc. PH: 321.345.9026
 305 East Dr., Suite H www.abovegroupinc.com
 Melbourne, Florida COA/CA Lic. No. 31120
 32904 AGE NO.: 0118001

NO.	REVISION/ SUBMISSIONS	DATE
ADD. #5	TRIAGE REVISION	13 AUG 2018

REFERENCE SHEETS P-901 & P-902

SKP-002
SHEET

FIRST STEP SHELTER
 3889 WEST INTERNATIONAL SPEEDWAY BLVD.
 DAYTONA BEACH, FLORIDA

ADDENDUM 5 IRB 0318-2360 AUGUST 15, 2018
 PAGE 11 OF 12

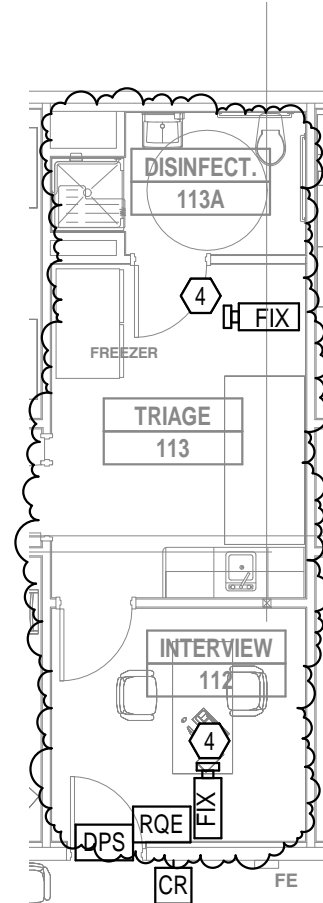
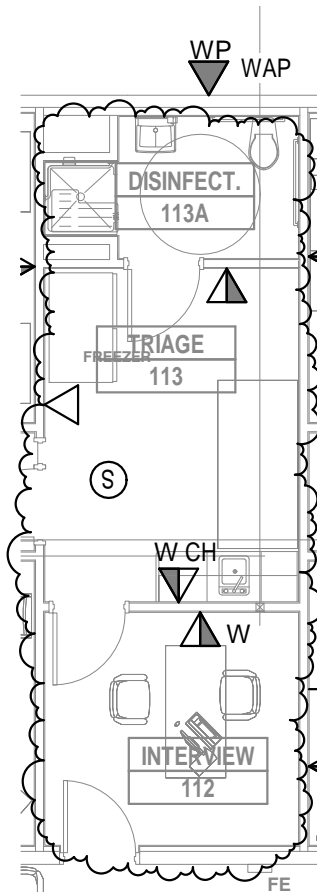


HALL & OGLE
ARCHITECTS, INC.
AA-C000925

208 MAGNOLIA AVENUE
 DAYTONA BEACH, FLORIDA 32114

PH (386) 255-6163
 FAX (386) 257-5650

COMMISSION NO. 1431	PROJECT ARCH: JEH DRAWN: GMC	DATE: 08/06/18
-------------------------------	---------------------------------	----------------



1 TRIAGE DATA/VOICE SKETCH
1/8" = 1'-0"

2 TRIAGE SECURITY SKETCH
1/8" = 1'-0"

REFERENCE SHEETS T-201 & T-202

bove Group
ENGINEERING | DESIGN | CONSULTING

Above Group, Inc.
305 East Dr., Suite H
Melbourne, Florida
32904

PH: 321.345.9026
www.abovegroupinc.com
COA/CA Lic. No. 31120
AGE NO.: 0118001

NO.	REVISION/ SUBMISSIONS	DATE
ADD. #5	TRIAGE REVISION	13 AUG 2018

SKT001
SHEET

FIRST STEP SHELTER
3889 WEST INTERNATIONAL SPEEDWAY BLVD.
DAYTONA BEACH, FLORIDA

ADDENDUM 5 IRB 0318-2360 AUGUST 15, 2018
PAGE 12 OF 12

HALL & OGLE ARCHITECTS, INC.
AA-C000925

208 MAGNOLIA AVENUE
DAYTONA BEACH, FLORIDA 32114

PH (386) 255-6163
FAX (386)257-5650

COMMISSION NO. 1431	PROJECT ARCH: JEH DRAWN: cvm	DATE: 08/06/18
-------------------------------	---------------------------------	----------------