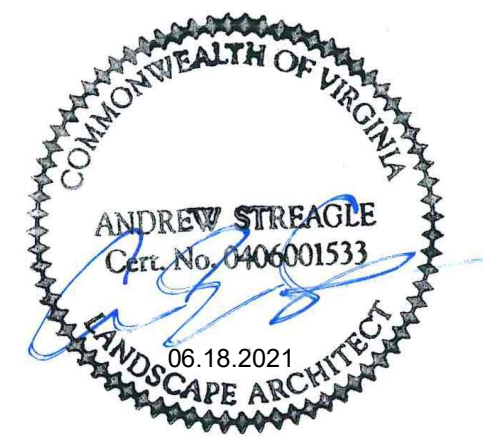
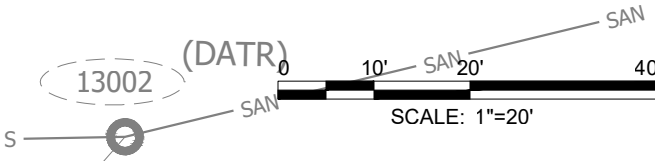
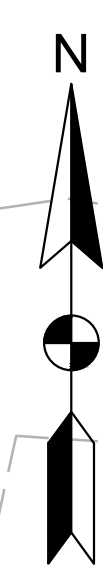
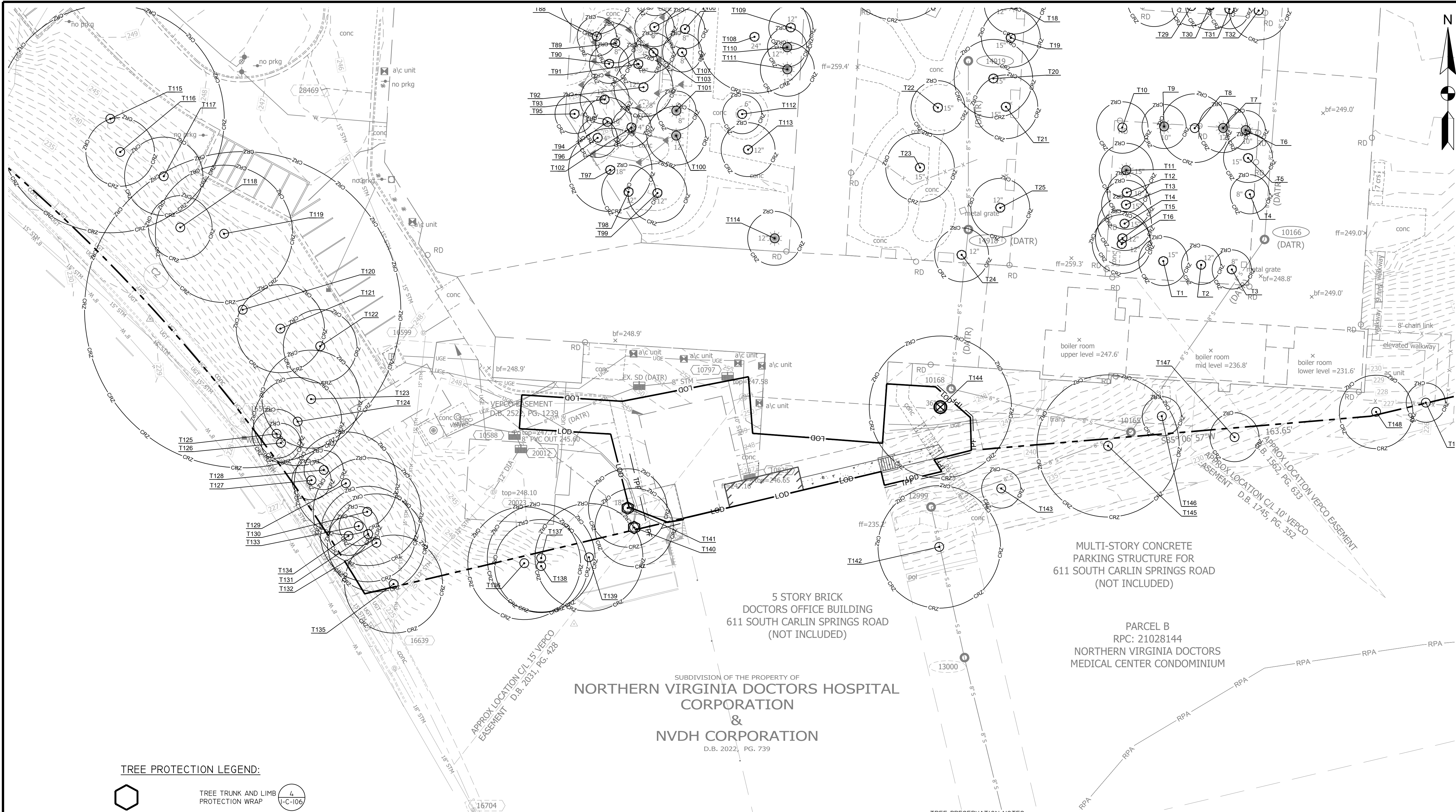


CONSULTANTS



DECONSTRUCTION OF VIRGINIA HOSPITAL CENTER COMPLEX - PHASE 1

601 SOUTH CARLIN SPRINGS ROAD
 ARLINGTON, VA 22204



TREE PROTECTION LEGEND:

- TREE TRUNK AND LIMB PROTECTION WRAP (1-C-106)
- TREE TO BE REMOVED, CONTRACTOR TO GRIND STUMPS
- TPF 6' CHAIN LINK TREE PROTECTION
- RP ROOT PRUNING (1-C-106)
- CRZ CRITICAL ROOT ZONE
- LOD LIMITS OF DISTURBANCE

- TREE PRESERVATION NOTES:**
- PRESERVE ALL EXISTING TREES.
 - IF THE TREE PRESERVATION MEASURES PROVIDED ON THE PLANS AND SPECIFICATIONS ARE NOT FOLLOWED DURING ANY PART OF THE CONSTRUCTION PROCESS, THE URBAN FORESTER MAY ASK FOR THE REMOVAL AND REPLACEMENT OF ANY DAMAGED TREES AT THE CONTRACTOR'S EXPENSE. THIS WILL BE COORDINATED WITH THE PROJECT OFFICER AND LANDSCAPE ARCHITECT.
 - CONTRACTOR SHALL COORDINATE TREATMENT (I.E., RADIAL TRENCHING, SUPERSONIC AIR TOOL DECOMPACTION, SOIL COMPOST AMENDMENT, ROOT PRUNING) OF EXISTING TREES WITH COUNTY AS DEEMED NECESSARY.
 - SEE TREE SCHEDULE AND PRESERVATION SUMMARY ON I-C-107 FOR TREE-BY-TREE LIST OF PROPOSED TREE PRESERVATION MEASURES.
 - SEE TREE PROTECTION DETAILS ON I-C-106.
 - SEE DEMOLITION PLAN FOR ADDITIONAL INFORMATION.
 - ARLINGTON COUNTY URBAN FORESTER RESERVES THE RIGHT TO MAKE ADJUSTMENTS TO TREE PROTECTION MEASURES BASED ON CONDITIONS ENCOUNTERED IN THE FIELD.
 - ALL ADJUSTMENTS TO THIS PLAN SHALL BE APPROVED BY URBAN FORESTER PRIOR TO SITE WORK.
 - AN INDEPENDENT ARBORIST, HIRED BY THE GENERAL CONTRACTOR, SHALL BE ON-SITE DURING DEMOLITION OF EXISTING PLAYGROUND TO MONITOR TREE PRESERVATION MEASURES. INDEPENDENT ARBORIST SHALL OVERSEE DEMOLITION WITHIN CRITICAL ROOT ZONES AND REPORT TO DPR FORESTRY STAFF WITH REGULAR COMMUNICATION AND WEEKLY WRITTEN REPORT, INCLUDING PHOTOGRAPHS, NOTES, PRESERVATION UPDATES AND CONSTRUCTION PROGRESS.
 - CONTRACTOR TO NOTIFY URBAN FORESTER 72 HOURS PRIOR TO INSTALLATION OF ANY TREE PRESERVATION MEASURES SHOWN ON PLANS AND URBAN FORESTER SHALL APPROVE THE LAYOUT OF TREE PRESERVATION MEASURES.

- ADDITIONAL TREE PRESERVATION NOTES:**
- GENERALLY, TREE PROTECTION FENCE IS LOCATED AT THE LIMIT OF DISTURBANCE. THEREFORE, THE LAYOUT OF LINES DEPICTING TREE PROTECTION FENCE IS DIAGRAMMATIC, AND FOR REFERENCE ONLY. PLEASE REFER TO THE TREE PRESERVATION DETAILS FOR MORE INFORMATION.
 - BEFORE ANY GRADING, DEMOLITION, SITE IMPROVEMENTS, OR OTHER DISTURBANCE (ASIDE FROM THE INSTALLATION OF TREE PROTECTION AND EROSION/SEDIMENT CONTROL DEVICES) IS PERFORMED, TREE PROTECTION MEASURES SHALL BE INSTALLED PER THE PLAN BY THE CONTRACTOR AND INSPECTED/APPROVED BY AN ARLINGTON COUNTY ARBORIST.
 - THIS PLAN IS FOR TREE PROTECTION/FOREST CONSERVATION PURPOSES ONLY.
 - IF TREE PROTECTION MEASURES PROVIDED ON THE PLANS AND SPECIFICATIONS ARE NOT FOLLOWED DURING ANY PART OF THE CONSTRUCTION PROCESS, THE URBAN FORESTER MAY ASK FOR THE REMOVAL AND REPLACEMENT OF TREES AT THE CONTRACTOR'S EXPENSE. THIS WILL BE COORDINATED WITH THE PROJECT OFFICER.
 - SEE THE FOLLOWING FOR ADDITIONAL TREE PRESERVATION NOTES, INFORMATION AND REQUIREMENTS:
 - E.A. TREE PRESERVATION SPECIFICATION
 - E.B. DEMOLITION PLAN

SUBDIVISION OF THE PROPERTY OF
NORTHERN VIRGINIA DOCTORS HOSPITAL CORPORATION & NVDH CORPORATION
 D.B. 2022, PG. 739

MARK	DATE	DESCRIPTION
	06.18.2021	ISSUED FOR BID

PROJECT NO:	19-0679.001
SCALE:	1"=20'
DESIGNED BY:	CMB
DRAWN BY:	JES
CHECKED BY:	JKS
SHEET TITLE	

TREE PRESERVATION PLAN

1-C-104