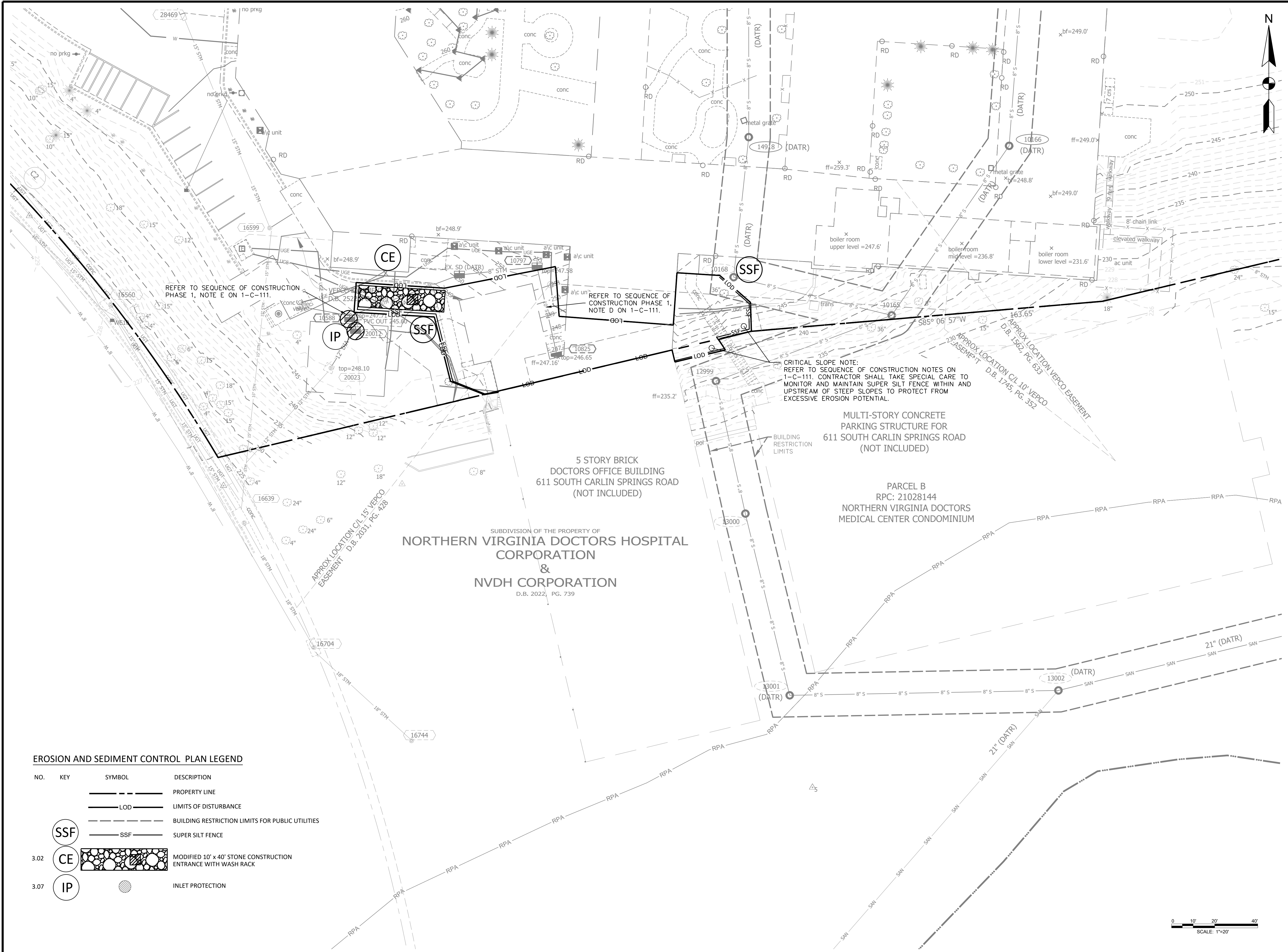


CONSULTANTS



**DECONSTRUCTION OF VIRGINIA HOSPITAL CENTER COMPLEX - PHASE 1**  
 601 SOUTH CARLIN SPRINGS ROAD  
 ARLINGTON, VA 22204



**EROSION AND SEDIMENT CONTROL PLAN LEGEND**

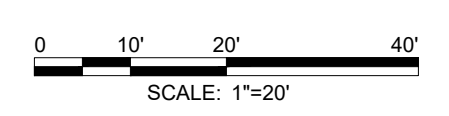
NO.	KEY	SYMBOL	DESCRIPTION
		---	PROPERTY LINE
		---	LIMITS OF DISTURBANCE
		---	BUILDING RESTRICTION LIMITS FOR PUBLIC UTILITIES
		---	SSF
		---	SUPER SILT FENCE
3.02	CE	[Patterned Box]	MODIFIED 10' x 40' STONE CONSTRUCTION ENTRANCE WITH WASH RACK
3.07	IP	[Circle]	INLET PROTECTION

**CRITICAL SLOPE NOTE:**  
 REFER TO SEQUENCE OF CONSTRUCTION NOTES ON 1-C-111. CONTRACTOR SHALL TAKE SPECIAL CARE TO MONITOR AND MAINTAIN SUPER SILT FENCE WITHIN AND UPSTREAM OF STEEP SLOPES TO PROTECT FROM EXCESSIVE EROSION POTENTIAL.

MULTI-STORY CONCRETE PARKING STRUCTURE FOR 611 SOUTH CARLIN SPRINGS ROAD (NOT INCLUDED)

5 STORY BRICK DOCTORS OFFICE BUILDING 611 SOUTH CARLIN SPRINGS ROAD (NOT INCLUDED)

SUBDIVISION OF THE PROPERTY OF  
**NORTHERN VIRGINIA DOCTORS HOSPITAL CORPORATION & NVDH CORPORATION**  
 D.B. 2022, PG. 739



MARK	DATE	DESCRIPTION
	06.18.2021	ISSUED FOR BID

PROJECT NO:	19-0679.001
SCALE:	1"=20'
DESIGNED BY:	CMB
DRAWN BY:	JES
CHECKED BY:	JKS
SHEET TITLE	

**EROSION & SEDIMENT CONTROL PLAN - PHASE I**

**1-C-109**