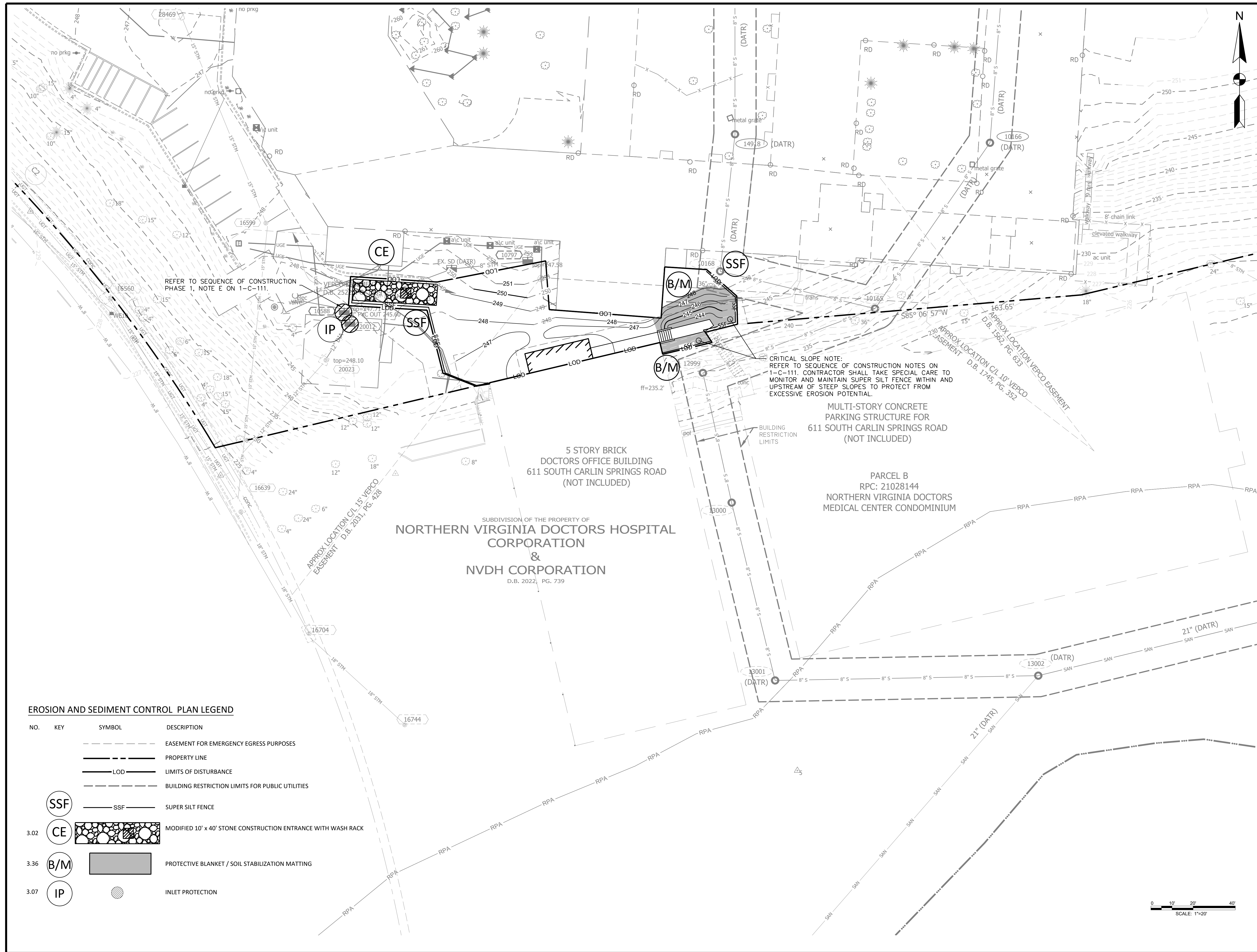


CONSULTANTS



DECONSTRUCTION OF VIRGINIA HOSPITAL CENTER COMPLEX - PHASE 1
 601 SOUTH CARLIN SPRINGS ROAD
 ARLINGTON, VA 22204



REFER TO SEQUENCE OF CONSTRUCTION PHASE 1, NOTE E ON 1-C-111.

CRITICAL SLOPE NOTE:
 REFER TO SEQUENCE OF CONSTRUCTION NOTES ON 1-C-111. CONTRACTOR SHALL TAKE SPECIAL CARE TO MONITOR AND MAINTAIN SUPER SILT FENCE WITHIN AND UPSTREAM OF STEEP SLOPES TO PROTECT FROM EXCESSIVE EROSION POTENTIAL.

MULTI-STORY CONCRETE PARKING STRUCTURE FOR 611 SOUTH CARLIN SPRINGS ROAD (NOT INCLUDED)

5 STORY BRICK DOCTORS OFFICE BUILDING 611 SOUTH CARLIN SPRINGS ROAD (NOT INCLUDED)

PARCEL B
 RPC: 21028144
 NORTHERN VIRGINIA DOCTORS MEDICAL CENTER CONDOMINIUM

SUBDIVISION OF THE PROPERTY OF
NORTHERN VIRGINIA DOCTORS HOSPITAL CORPORATION & NVDH CORPORATION
 D.B. 2022, PG. 739

EROSION AND SEDIMENT CONTROL PLAN LEGEND

NO.	KEY	SYMBOL	DESCRIPTION
		- - - - -	EASEMENT FOR EMERGENCY EGRESS PURPOSES
		— — — — —	PROPERTY LINE
		— LOD —	LIMITS OF DISTURBANCE
		- - - - -	BUILDING RESTRICTION LIMITS FOR PUBLIC UTILITIES
		— SSF —	SUPER SILT FENCE
3.02	CE		MODIFIED 10' x 40' STONE CONSTRUCTION ENTRANCE WITH WASH RACK
3.36	B/M		PROTECTIVE BLANKET / SOIL STABILIZATION MATTING
3.07	IP		INLET PROTECTION

MARK	DATE	DESCRIPTION
	06.18.2021	ISSUED FOR BID

PROJECT NO:	19-0679.001
SCALE:	1"=20'
DESIGNED BY:	CMB
DRAWN BY:	JES
CHECKED BY:	JKS
SHEET TITLE	

EROSION & SEDIMENT CONTROL PLAN - PHASE II

1-C-110

