



Georgetown County, South Carolina

129 Screven Street, Suite 239
Post Office Drawer 421270
Georgetown, SC 29442-4200
(843) 545-3083 • Fax (843) 545-3500
E-Mail • purch@gtcounty.org
Website • <http://www.gtcounty.org>

ADDENDUM #2 to IFB 20-074

BID NUMBER: 20-074

ISSUE DATE: Wednesday., October 21, 2020

OPENING DATE: Wed., Oct. 28, 2020

OPENING TIME: 2:00 PM (Eastern NIST) Bid

Opening Location: Georgetown County Historic Courthouse, Suite 239 - Purchasing Conference Room

Pre-Bid Site Inspection: INDEPENDENT –on own

PROCUREMENT FOR: CTC Road Repair and Resurfacing, FY21 [Phase 1]

This addendum will amend IFB No. 20-074, **CTC Road Repair and Resurfacing, FY21 [Phase 1]** originally issued on Wednesday, October 14, 2020. This clarification is being provided to all known and registered correspondents in response to questions received. All addenda and original solicitation documents are also available online at: www.gtcounty.org, select “Bid Opportunities” from the Quick Links section and “View Current Bid Solicitations.”

As a follow-up to Question #2 on Addendum No. 01, IE:

Question #2: Grate Avenue – Are plans available showing the location of the widening? Will the existing Centerline be maintained or shifted?

Response: There are no “Official” plans – This was bid as a non-engineered resurfacing project. The centerline will be adjusted to accommodate the 24’ width while staying within current ROW limits. There are drawings to show the limits of ROW.

Additional Response: A drawing labeled “Carolina Grate Avenue Resurfacing and Drainage Improvements” is attached to this addendum and also available on-line in PDF format. To maintain scale, this should be reproduced on ARCH D media.



ADDENDUM ACKNOWLEDGEMENT

IFB No. 20-074

CTC Road Repair and Resurfacing, FY21 [Phase 1]

To be returned with the final proposal submission to Georgetown County.

COMPANY NAME: _____

Addendum #1 Received Date: _____ Initialed By: _____

Addendum #2 Received Date: _____ Initialed By: _____

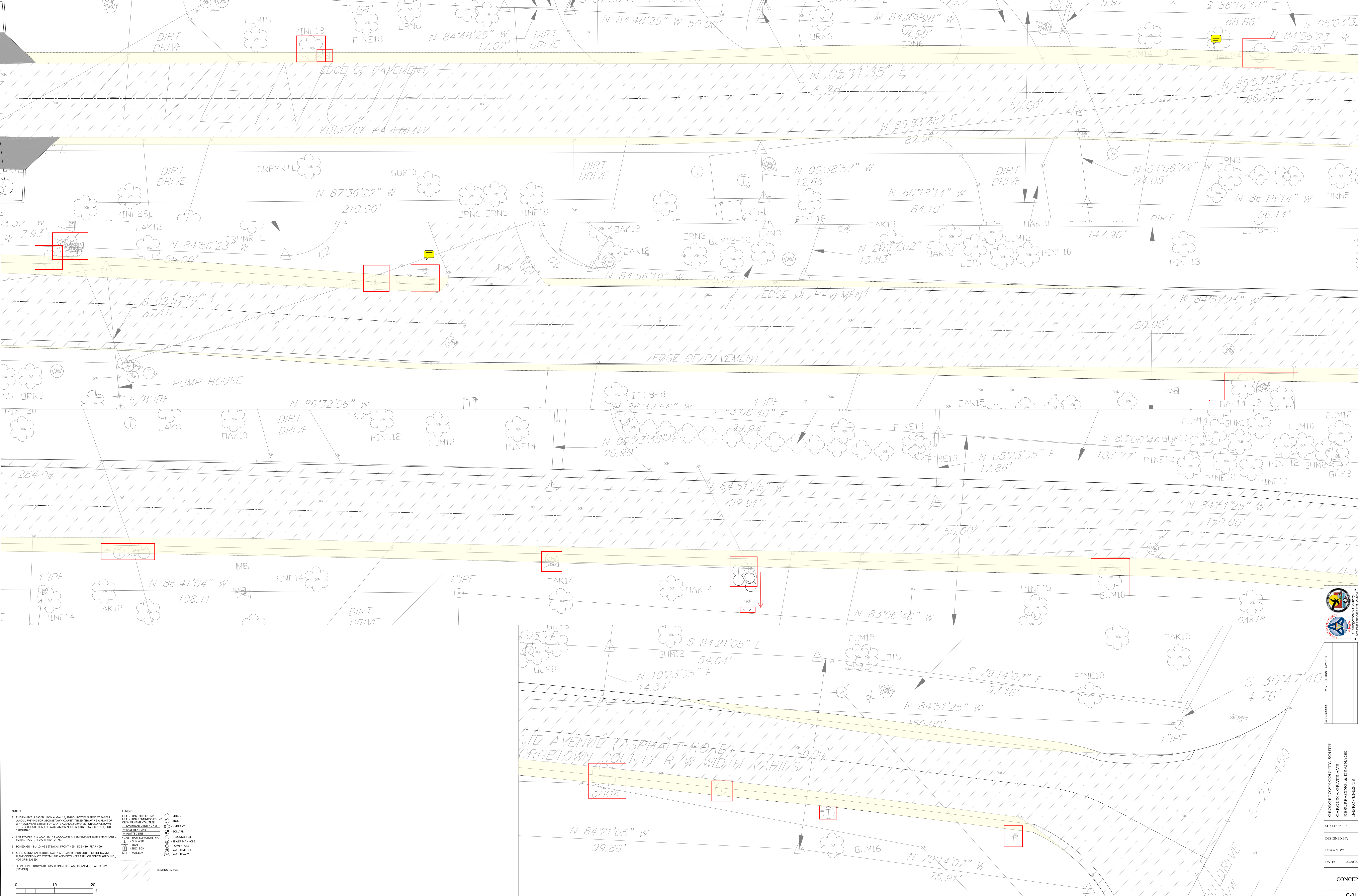
Addendum #3 Received Date: _____ Initialed By: _____

Addendum #4 Received Date: _____ Initialed By: _____

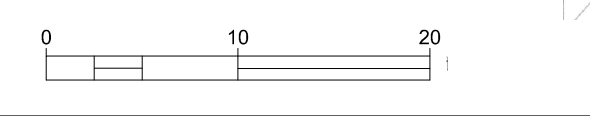
Addendum #5 Received Date: _____ Initialed By: _____

Addendum #6 Received Date: _____ Initialed By: _____

If your IFB submission has already been submitted, acknowledgment may be provided by e-mail to purch@gtcounty.org or fax to (843)545-3500.



- NOTES:**
- THIS EXHIBIT IS BASED UPON A MAY 15, 2015 SURVEY PREPARED BY PARKER LAND SURVEYING FOR GEORGETOWN COUNTY, SOUTH CAROLINA.
 - THIS PROPERTY IS LOCATED IN FLOOD ZONE X, PER FEMA EFFECTIVE FIRM PANEL 8808271E, REVISED RECORDING.
 - ZONED: GR - BUILDING SETBACKS: FRONT - 20' SIDE - 10' REAR - 20'
 - ALL BEARINGS AND COORDINATES ARE BASED UPON SOUTH CAROLINA STATE PLANE COORDINATE SYSTEM 1983 AND DISTANCES ARE HORIZONTAL (SLANT) NOT GRID BASED.
 - ELEVATIONS SHOWN ARE BASED ON NORTH AMERICAN VERTICAL DATUM (NAVD83).
- LEGEND:**
- 1" IPF - IRON PIPE FORCE MAIN
 - 5/8" IRF - IRON RESILIENT FORCE MAIN
 - CONCRETE UTILITY LINES
 - EXISTING UTILITY LINES
 - PROPERTY LINE
 - X 1.00' - SPOT ELEVATION
 - 1.5' - SPOT ELEVATION
 - 2.0' - SPOT ELEVATION
 - 3.0' - SPOT ELEVATION
 - 4.0' - SPOT ELEVATION
 - 5.0' - SPOT ELEVATION
 - 6.0' - SPOT ELEVATION
 - 7.0' - SPOT ELEVATION
 - 8.0' - SPOT ELEVATION
 - 9.0' - SPOT ELEVATION
 - 10.0' - SPOT ELEVATION
 - 11.0' - SPOT ELEVATION
 - 12.0' - SPOT ELEVATION
 - 13.0' - SPOT ELEVATION
 - 14.0' - SPOT ELEVATION
 - 15.0' - SPOT ELEVATION
 - 16.0' - SPOT ELEVATION
 - 17.0' - SPOT ELEVATION
 - 18.0' - SPOT ELEVATION
 - 19.0' - SPOT ELEVATION
 - 20.0' - SPOT ELEVATION
 - 21.0' - SPOT ELEVATION
 - 22.0' - SPOT ELEVATION
 - 23.0' - SPOT ELEVATION
 - 24.0' - SPOT ELEVATION
 - 25.0' - SPOT ELEVATION
 - 26.0' - SPOT ELEVATION
 - 27.0' - SPOT ELEVATION
 - 28.0' - SPOT ELEVATION
 - 29.0' - SPOT ELEVATION
 - 30.0' - SPOT ELEVATION
 - 31.0' - SPOT ELEVATION
 - 32.0' - SPOT ELEVATION
 - 33.0' - SPOT ELEVATION
 - 34.0' - SPOT ELEVATION
 - 35.0' - SPOT ELEVATION
 - 36.0' - SPOT ELEVATION
 - 37.0' - SPOT ELEVATION
 - 38.0' - SPOT ELEVATION
 - 39.0' - SPOT ELEVATION
 - 40.0' - SPOT ELEVATION
 - 41.0' - SPOT ELEVATION
 - 42.0' - SPOT ELEVATION
 - 43.0' - SPOT ELEVATION
 - 44.0' - SPOT ELEVATION
 - 45.0' - SPOT ELEVATION
 - 46.0' - SPOT ELEVATION
 - 47.0' - SPOT ELEVATION
 - 48.0' - SPOT ELEVATION
 - 49.0' - SPOT ELEVATION
 - 50.0' - SPOT ELEVATION
 - 51.0' - SPOT ELEVATION
 - 52.0' - SPOT ELEVATION
 - 53.0' - SPOT ELEVATION
 - 54.0' - SPOT ELEVATION
 - 55.0' - SPOT ELEVATION
 - 56.0' - SPOT ELEVATION
 - 57.0' - SPOT ELEVATION
 - 58.0' - SPOT ELEVATION
 - 59.0' - SPOT ELEVATION
 - 60.0' - SPOT ELEVATION
 - 61.0' - SPOT ELEVATION
 - 62.0' - SPOT ELEVATION
 - 63.0' - SPOT ELEVATION
 - 64.0' - SPOT ELEVATION
 - 65.0' - SPOT ELEVATION
 - 66.0' - SPOT ELEVATION
 - 67.0' - SPOT ELEVATION
 - 68.0' - SPOT ELEVATION
 - 69.0' - SPOT ELEVATION
 - 70.0' - SPOT ELEVATION
 - 71.0' - SPOT ELEVATION
 - 72.0' - SPOT ELEVATION
 - 73.0' - SPOT ELEVATION
 - 74.0' - SPOT ELEVATION
 - 75.0' - SPOT ELEVATION
 - 76.0' - SPOT ELEVATION
 - 77.0' - SPOT ELEVATION
 - 78.0' - SPOT ELEVATION
 - 79.0' - SPOT ELEVATION
 - 80.0' - SPOT ELEVATION
 - 81.0' - SPOT ELEVATION
 - 82.0' - SPOT ELEVATION
 - 83.0' - SPOT ELEVATION
 - 84.0' - SPOT ELEVATION
 - 85.0' - SPOT ELEVATION
 - 86.0' - SPOT ELEVATION
 - 87.0' - SPOT ELEVATION
 - 88.0' - SPOT ELEVATION
 - 89.0' - SPOT ELEVATION
 - 90.0' - SPOT ELEVATION
 - 91.0' - SPOT ELEVATION
 - 92.0' - SPOT ELEVATION
 - 93.0' - SPOT ELEVATION
 - 94.0' - SPOT ELEVATION
 - 95.0' - SPOT ELEVATION
 - 96.0' - SPOT ELEVATION
 - 97.0' - SPOT ELEVATION
 - 98.0' - SPOT ELEVATION
 - 99.0' - SPOT ELEVATION
 - 100.0' - SPOT ELEVATION
 - 101.0' - SPOT ELEVATION
 - 102.0' - SPOT ELEVATION
 - 103.0' - SPOT ELEVATION
 - 104.0' - SPOT ELEVATION
 - 105.0' - SPOT ELEVATION
 - 106.0' - SPOT ELEVATION
 - 107.0' - SPOT ELEVATION
 - 108.0' - SPOT ELEVATION
 - 109.0' - SPOT ELEVATION
 - 110.0' - SPOT ELEVATION
 - 111.0' - SPOT ELEVATION
 - 112.0' - SPOT ELEVATION
 - 113.0' - SPOT ELEVATION
 - 114.0' - SPOT ELEVATION
 - 115.0' - SPOT ELEVATION
 - 116.0' - SPOT ELEVATION
 - 117.0' - SPOT ELEVATION
 - 118.0' - SPOT ELEVATION
 - 119.0' - SPOT ELEVATION
 - 120.0' - SPOT ELEVATION
 - 121.0' - SPOT ELEVATION
 - 122.0' - SPOT ELEVATION
 - 123.0' - SPOT ELEVATION
 - 124.0' - SPOT ELEVATION
 - 125.0' - SPOT ELEVATION
 - 126.0' - SPOT ELEVATION
 - 127.0' - SPOT ELEVATION
 - 128.0' - SPOT ELEVATION
 - 129.0' - SPOT ELEVATION
 - 130.0' - SPOT ELEVATION
 - 131.0' - SPOT ELEVATION
 - 132.0' - SPOT ELEVATION
 - 133.0' - SPOT ELEVATION
 - 134.0' - SPOT ELEVATION
 - 135.0' - SPOT ELEVATION
 - 136.0' - SPOT ELEVATION
 - 137.0' - SPOT ELEVATION
 - 138.0' - SPOT ELEVATION
 - 139.0' - SPOT ELEVATION
 - 140.0' - SPOT ELEVATION
 - 141.0' - SPOT ELEVATION
 - 142.0' - SPOT ELEVATION
 - 143.0' - SPOT ELEVATION
 - 144.0' - SPOT ELEVATION
 - 145.0' - SPOT ELEVATION
 - 146.0' - SPOT ELEVATION
 - 147.0' - SPOT ELEVATION
 - 148.0' - SPOT ELEVATION
 - 149.0' - SPOT ELEVATION
 - 150.0' - SPOT ELEVATION
 - 151.0' - SPOT ELEVATION
 - 152.0' - SPOT ELEVATION
 - 153.0' - SPOT ELEVATION
 - 154.0' - SPOT ELEVATION
 - 155.0' - SPOT ELEVATION
 - 156.0' - SPOT ELEVATION
 - 157.0' - SPOT ELEVATION
 - 158.0' - SPOT ELEVATION
 - 159.0' - SPOT ELEVATION
 - 160.0' - SPOT ELEVATION
 - 161.0' - SPOT ELEVATION
 - 162.0' - SPOT ELEVATION
 - 163.0' - SPOT ELEVATION
 - 164.0' - SPOT ELEVATION
 - 165.0' - SPOT ELEVATION
 - 166.0' - SPOT ELEVATION
 - 167.0' - SPOT ELEVATION
 - 168.0' - SPOT ELEVATION
 - 169.0' - SPOT ELEVATION
 - 170.0' - SPOT ELEVATION
 - 171.0' - SPOT ELEVATION
 - 172.0' - SPOT ELEVATION
 - 173.0' - SPOT ELEVATION
 - 174.0' - SPOT ELEVATION
 - 175.0' - SPOT ELEVATION
 - 176.0' - SPOT ELEVATION
 - 177.0' - SPOT ELEVATION
 - 178.0' - SPOT ELEVATION
 - 179.0' - SPOT ELEVATION
 - 180.0' - SPOT ELEVATION
 - 181.0' - SPOT ELEVATION
 - 182.0' - SPOT ELEVATION
 - 183.0' - SPOT ELEVATION
 - 184.0' - SPOT ELEVATION
 - 185.0' - SPOT ELEVATION
 - 186.0' - SPOT ELEVATION
 - 187.0' - SPOT ELEVATION
 - 188.0' - SPOT ELEVATION
 - 189.0' - SPOT ELEVATION
 - 190.0' - SPOT ELEVATION
 - 191.0' - SPOT ELEVATION
 - 192.0' - SPOT ELEVATION
 - 193.0' - SPOT ELEVATION
 - 194.0' - SPOT ELEVATION
 - 195.0' - SPOT ELEVATION
 - 196.0' - SPOT ELEVATION
 - 197.0' - SPOT ELEVATION
 - 198.0' - SPOT ELEVATION
 - 199.0' - SPOT ELEVATION
 - 200.0' - SPOT ELEVATION



GEORGETOWN COUNTY, SOUTH CAROLINA
 CAROLINA GRATE AVENUE
 RESURFACING & DRAINAGE
 IMPROVEMENTS
 PROJECT:

SCALE: 1"=40'
 DESIGNED BY:
 DRAWN BY:
 DATE: 02/20/2020
 CONCEPT
 SHEET NO: C-01